

Preseismic ULF electromagnetic effect from observation at Kamchatka

O. Molchanov¹, A. Schekotov¹, E. Fedorov¹, G. Belyaev¹, and E. Gordeev²

¹Institute of the Physics of the Earth, Moscow, Russia

²Institute of Geophysical Survey, Petropavlovsk-Kamchatski, Russia

Received: 28 May 2002 – Revised: 30 September 2002 – Accepted: 7 October 2002

Abstract. Some results of ULF magnetic field observation at Karimshino site (Kamchatka, Russia) since June 2000 to September 2001 are presented here. Using case study we have found an effect of suppression of ULF intensity about 2–6 days before rather strong and nearby seismic shocks (magnitude $M = 4.0 - 6.2$). It is revealed for nighttime and horizontal component of ULF field (G) in the frequency range $0.01 - 0.1$ Hz. Then we prove the reliability of the effect by computed correlation between G (or $1/G$) and specially calculated seismic indexes K_s for the whole period of observation. Basing on the simple criteria we conclude that reliability of seismo-associated ULF suppression effect is comparable with well-known effect of connection between ULF variation and K_p index of global magnetic activity. It seems the reason of suppression is located at the atmosphere or ionosphere but not in the ground medium.

1 Introduction

It is recognized now that analysis of seismic data itself, even sophisticated, is not sufficient in order to resolve two essential problems of geodynamics: what are mechanisms of earthquakes (EQs) origin and how to do forecasting of large EQs. In such a situation an importance of nonseismic methods is evident. One of them is variation of magnetic field in the ultra-low frequency (ULF) range $0.01 - 10$ Hz.

This effect was firstly reported by Fraser-Smith et al. (1990) in relation to Loma-Prieta (1989) (USA) large EQ (magnitude $M_s = 7.1$) and by Molchanov et al. (1992), Kopytenko et al. (1993) in association with Spitak, 1987 (former Soviet Union) EQ ($M_s = 6.9$). Fraser-Smith et al. (1990) were lucky to observe ULF geomagnetic variations at distance 7 km from EQ epicenter and found that ULF magnetic intensity increased about 14 days before EQ, then it depressed several days ahead and once again it increased strongly at 4 h before the main shock and continued at high

level after EQ. They found the most clear effect in the frequency band $F = 0.01 - 0.1$ Hz. Molchanov et al. (1992), Kopytenko et al. (1993) observed ULF variation at distance 130 km from the EQ epicenter and noted only last stage of the process: increase of ULF intensity in time period from 3 h before to several days after EQ.

Next researches on this subject were mainly produced in Japan. Hayakawa et al. (1996a) reported results of observation the ULF magnetic field variations before great EQ at Guam, 1993 ($M_s = 8.0$) at epicenter distance 65 km. They suggested to analyze the polarization ratio $R = Z/H$ in frequency band $0.01 - 0.05$ Hz and found that this parameter increased about 1 month before EQ but returned to the regular level after it. Later Hayakawa et al. (1999) considered the data once again and showed that slope of ULF spectrum (fractal number) also changed before the EQ. Hattori et al. (2002) reported observation of ULF magnetic variation around date of two Kagoshima, 1997 large EQs ($M = 6.5$ and $M = 6.3$) at distance about 60 km from the both epicenters. They also analyzed polarization ratio and found its increase about 1 month before EQ date. They could not find this signature at the far-distance stations with the same equipment. Kopytenko et al. (2002) observed ULF magnetic variations using network of stations situated in the Izu and Chiba area of Japan. They discussed results related to EQ swarm during June–July 2000 with strongest shock $M_s = 6.4$ in the middle of the swarm. Epicenter distances to the stations varied from 70 to 150 km and the authors paid main attention to polarization ratio near frequencies $F_1 = 0.1 \pm 0.005$, $F_2 = 0.01 \pm 0.005$ and $F_3 = 0.005 \pm 0.003$ Hz. It was shown that ratio $R(F_3)/R(F_1)$ sharply increases just before a start of strong seismic activity, while amplitudes of Z and G component variations and Z/G ratio defined in a frequency range F_2 during night time intervals (00:00–06:00 LT) begin to increase 1.5 months before the period of the seismic activity.

In this paper we consider ULF perturbations only in temporal scale from several hours to a few days and pay main attention to time correlation of our data with seismicity.

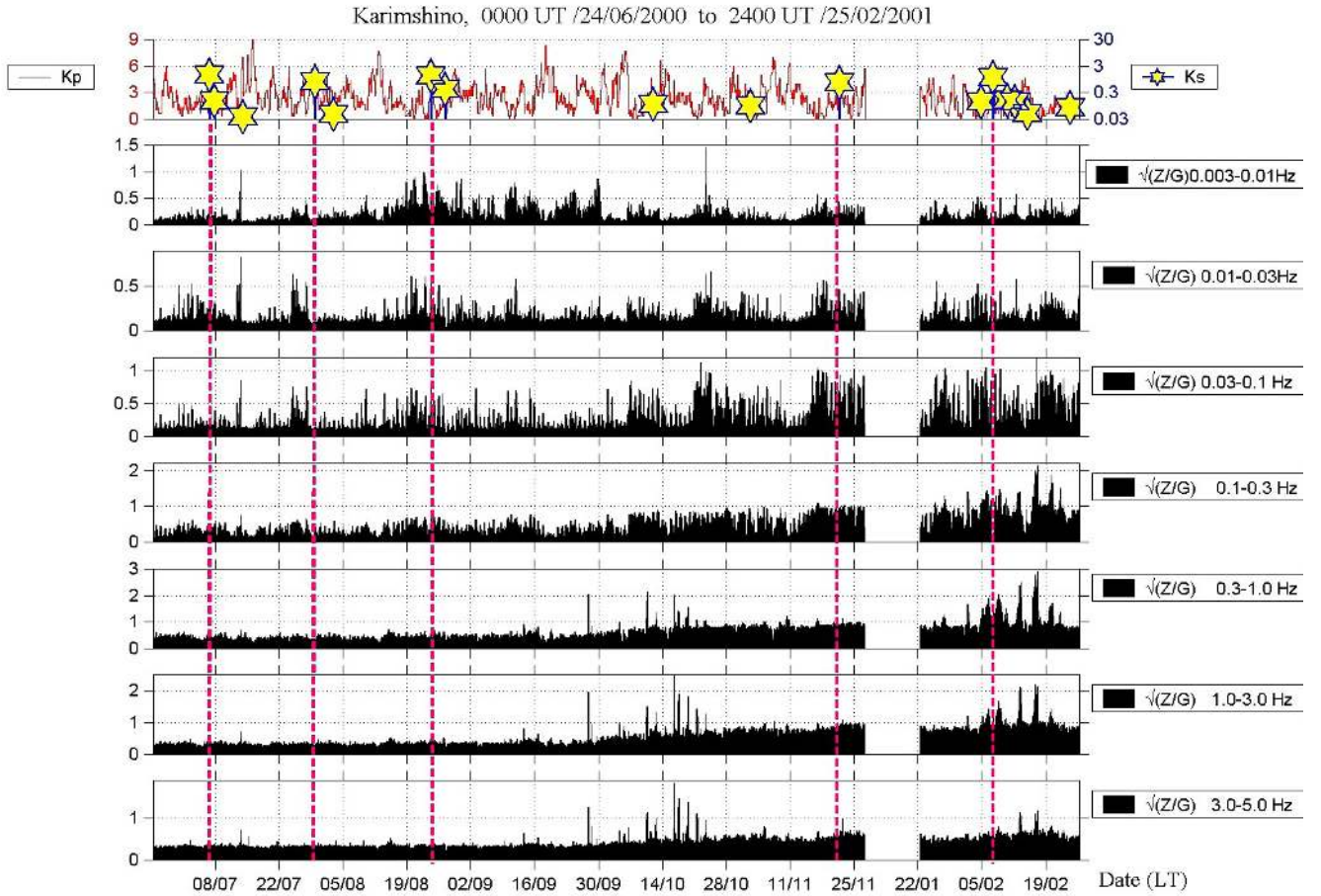


Fig. 1. K_s , K_p (upper panel) and amplitude polarization ratio $(Z/G)^{1/2}$ in the different frequency bands (2 h averaging) for the first interval of observation from 24 June 2000 to 25 February 2001.

2 Index of seismic activity

In order to estimate a correlation between seismicity and nonseismic parameter like ULF magnetic intensity at a given station it is necessary to introduce a parameter characterizing seismic influence in the observational point for earthquakes with different magnitudes M , epicenter distance D and depth H . We assume that index of seismic activity is proportional to seismic energy input

$$\Delta E_s = \int P_s dt \sim \langle P_s \rangle \tau$$

where P_s is seismic energy flux and τ is duration of seismic pulse. P_s is decreasing on distance due to divergence of flux in space ($\propto R^{-2}$), then due to inelastic attenuation (coefficient F_a) and due to scattering or elastic attenuation (Aki and Richards, 1980). Scattering can be described in terms of multi-ray propagation and in the first approximation the scattering factor in P_s is in inverse proportion to τ . Hence:

$$\Delta E_s \simeq (E_s/R^2)F_a \sim (10^{1.5M}/R^2)F_a(R, M) \quad (1)$$

where Kanamori and Anderson (1975) scaling is used. So, we can introduce seismic index K_s as following:

$$K_s = \sqrt{\Delta E_s / \Delta E_s^*} = K_0 10^{0.75M} \Phi_a / R \quad (2)$$

where $\Delta E_s^* = \Delta E_s$ near the boundary of seismic influence $R = R^*$, K_0 is a constant and attenuation coefficient can be presented by approximated formula (Molchanov et al., 2002):

$$\Phi_a = \sqrt{F_a} \simeq (1 + R/L_a)^{-2.5} \quad (3)$$

Here L_a is attenuation distance and it is easy to find that $L_a \simeq QL_s/2 \simeq 10^{M/2}$, where $Q \simeq 100$ is elastic quality and L_s is average size of seismic source (Aki and Richards, 1980). It is evident that $K_s = 1$ near boundary of seismic influence, where $\Delta E_s = \Delta E_s^*$ and $R = R^*$. It allows to determine $K_0 \simeq 0.1$ directly from observational data as it was done in (Gorbatikov et al., 2002). In result $K_0 \simeq 0.1$ we will use this seismic index K_s in above-described formulation.

3 Description of observation and case study results

During 1999–2000, in addition to the existing seismic and geophysical observations, Russian and Japanese scientists established a special observatory at Karimshino site (52.94° N, 158.25° E) in Kamchatka (Far-Eastern Russia). Its main purpose was to study a correlation of seismic activity with electromagnetic and other nonseismic phenomena. The

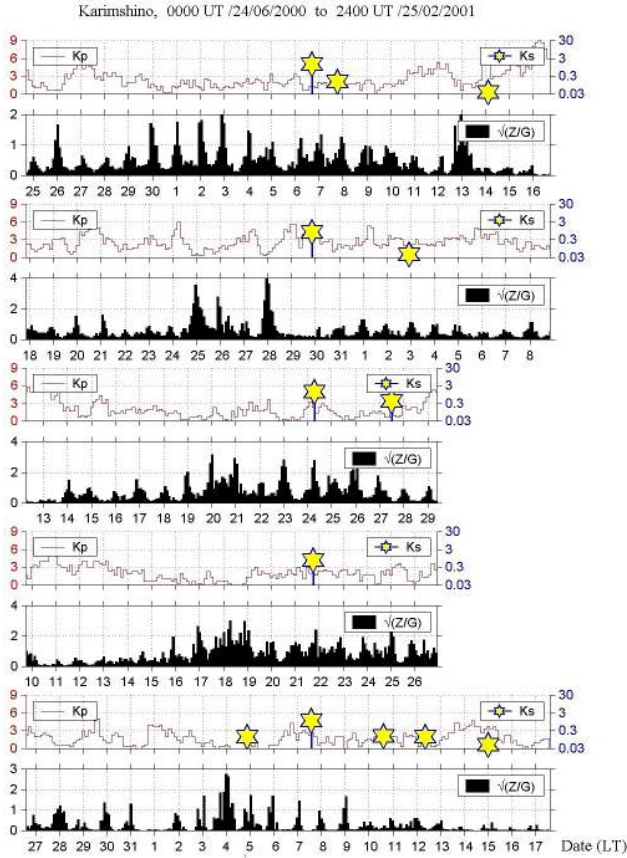


Fig. 2. Variations of amplitude polarization ratio around date of selected EQs (indicated in Fig. 1) in the channel 2, $F = 0.01 - 0.03$ Hz (two hours averaging). Vertical dotted lines show midnight times.

main advantage of this station is quiet electromagnetic environment that allows us to use rather sensitive equipment and to check some theoretical ideas. The regular recordings have been started since June 2000 and some information about Karimshino station is already published (Uyeda et al., 2002; Gladyshev et al., 2002).

Our three-component induction magnetometer measures the geomagnetic field variations in the frequency range $0.003 - 40$ Hz. The sensitivity threshold is better than $20 \text{ pT/Hz}^{1/2}$ at frequency 0.01 Hz. It corresponds to $0.02 \text{ pT/Hz}^{1/2}$ at frequencies above 10 Hz. Here we analyze results in the interval from 24 June 2000 to 25 February 2001 (the first interval duration of 7 months) and second interval from 26 February 2001 to 16 September 2001 (during of about 6 months). So, whole period of the observation has duration about 13 months. As mentioned before in this paper we are presenting results on variation with scale more than several hours that is why we use two hour averaging of the data.

First of all we have produced the variation of the spectrum of ULF intensity for each magnetic field component (H , D , Z) in the 7 frequency bands: $F = 0.003 - 0.01$ Hz (channel 1), $F = 0.01 - 0.03$ Hz (channel 2), $F = 0.03 -$

0.1 Hz (channel 3), $F = 0.1 - 0.3$ Hz (channel 4), $F = 0.3 - 1.0$ Hz (channel 5), $F = 1.0 - 3.0$ Hz (channel 6) and $F = 3.0 - 5.0$ Hz (channel 7). We have found conventional correlation with K_p index of magnetic activity and evident daily variation, especially in channels 1, 2, 3. But a clear signature of correlation with K_s (i.e. seismicity) has not been discovered in such a type of analysis.

Then we apply the method of polarization ratio, which was discussed in many papers since (Hayakawa et al., 1996a) and which is reduced to analysis of $Z^{1/2}/G^{1/2}$ ratio in our research. The results for the first time interval are shown in Fig. 1. In contrast with amplitude analysis some correlation with K_s can be supposed at least for the frequency channels 2 and 3 and near the date of large K_s values (these cases are indicated by vertical dash lines).

In order to check it we demonstrate all the cases in Fig. 2, each case during time interval ± 14 days around the EQ date and presentation is centered to the corresponding date. Relying upon results in Fig. 1 and for simplicity we present only channel 2 ($F = 0.01 - 0.03$ Hz). It is obvious that nighttime values of $\sqrt{Z/G}$ show increase at about 2–7 days time period before EQ date.

An important question arises immediately: what it means, increase of Z component or decrease of G component or both? The first of all we examined a behavior of Z component and found it reveals mainly seasonal changes and sometimes it is exposed to small man-made perturbations but does not show correlation with seismicity. To clarify it we present Z/G values and $1/G$ values after 1 day averaging in Fig. 3 for the same cases as in Fig. 2.

After scrutinized consideration we have found the effect discussed not for all the cases. The possible reason is that characteristics of EQs are different. To check it we present EQs characteristics for the cases with rather big K_s value in Fig. 4 together with estimation of possibly correlated cases. It seems the correlated cases are mainly concentrated near sea shore. We failed to discover the direction to ULF emission from H/D ratio. It indicates probably on large scale of the emission source. We hope to conduct some direction finding in future multi-station observations, which are supposed since end of 2002 year.

4 Prove of the effect by correlation analysis

Here we are going to check the effect, i.e. association of G intensity with K_s index, by conventional correlation method. Furthermore we try to find the anticipated correlation with K_p . At the beginning we construct the set of normalized deviations as the following:

$$\delta G_i(t) = (G_i - \langle G_i \rangle) / \langle G_i \rangle$$

$$\delta(1/G_i) = (1/G_i - \langle 1/G_i \rangle) / \langle 1/G_i \rangle$$

where i is number of the frequency channel, $i = 1, 2, 3$ and $\langle G_i \rangle$, $\langle 1/G_i \rangle$ denotes running mean with 1 month window. Taking into consideration that the temporal scale of expected effect is about several days we pro-

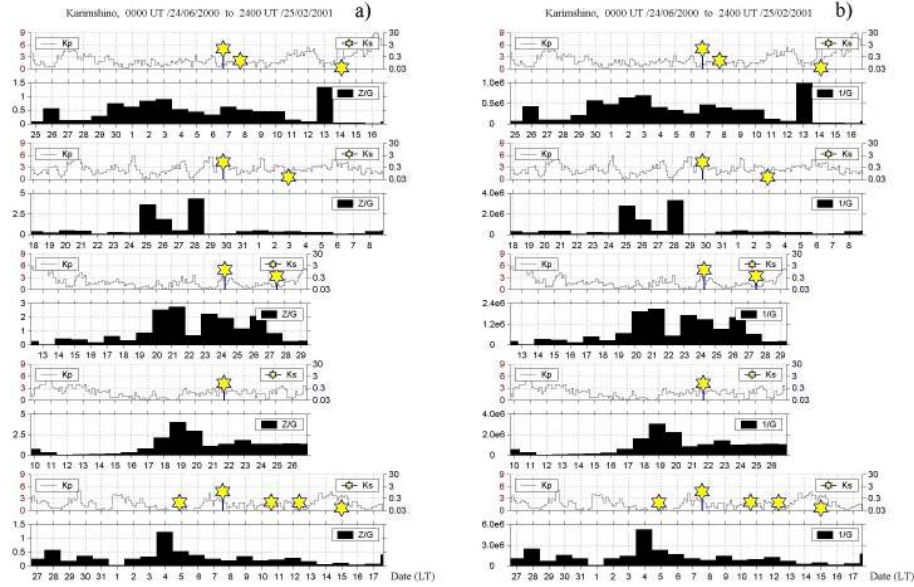


Fig. 3. (a) Z/G ratio for selected EQs after 1-day averaging. (b) The same as in (a) but for $1/G$ values and in corresponding scaling.

duce 2 day averaging of δG_i and $\delta(1/G_i)$ which leads to values $\delta_2 G_i$, $\delta_2(1/G_i)$, and find $K_{sd} = \sum K_s$ per 2 days, $K_{pd} = \sum K_p$ per 2 days. Due to clear daily variation of ULF spectral power in the selected channels, $\delta_2 G_i$ is mainly related to daytime ULF intensity, but $\delta_2(1/G_i)$ is mainly related to nighttime ULF intensity. As a next step we have computed correlation functions $F_{1i}(\tau) = \delta_2 G_i * K_{sd}$, $F_{2i}(\tau) = \delta_2(1/G_i) * K_{sd}$, $F_{3i}(\tau) = \delta_2 G_i * K_{pd}$ and $F_{4i}(\tau) = \delta_2(1/G_i) * K_{pd}$ using conventional programs, where τ is determined in the interval ± 15 days. The negative value of τ corresponds to preseismic period and positive τ -value is for postseismic period in our formulation. Because of K_{sd} and K_{pd} are positive values, it is evident that positive value of $F_{1i}(\tau)$ corresponds to increase of daytime ULF intensity with K_s and negative value is for its decrease. In contrast positive value of $F_{2i}(\tau)$ means suppression of nighttime ULF intensity and negative value $F_{2i}(\tau)$ means increase of the intensity with seismicity. The signs of correlation functions $F_{3i}(\tau)$ and $F_{4i}(\tau)$ characterizing relation of ULF magnetic field with processes in the ionosphere-magnetosphere have the same meaning.

First of all we present a correlation of ULF intensity with global ionosphere-magnetosphere activity, functions $F_{3i}(\tau)$ in the Fig. 5a and $F_{4i}(\tau)$ in the Fig. 5b. Obvious correlation is observed both for daytime ULF intensity (Fig. 5a) and for the night-time values (Fig. 5b). It is stable, i.e. it reveals for the first interval of observation, then for the second 6-month interval and for the whole 13 month's interval. Remembering above-mentioned definition, positive values of $\delta_2 G_i * K_{pd}$ correlation and negative values of $\delta_2(1/G_i) * K_{pd}$ correlation at $\tau \simeq 0$ mean that both day-time and night-time ULF intensity is proportional and concurrent to K_p index. This correlation is rather understandable.

We call a correlation as reliable one if it reveals for all the

intervals and at least twice out of a reliability margin at the whole interval, which is about ± 0.1 . Basing on this point a correlation in Figs. 5a and 5b is reliable. Then we show correlation of ULF intensity with seismic index K_s , functions $F_{1i}(\tau)$ (Fig. 5c) and $F_{2i}(\tau)$ (Fig. 5d). Due to our criteria there is no correlation between daytime intensity and K_s , but night-time suppression of ULF intensity near value $\tau \sim -4$ days looks as reliable effect. This conclusion coincides with result of case study. Some increase of correlation at +14 days is probably connected with aftershock activity and it is not considered here.

5 Discussion and conclusions

We have found effect of suppression of ULF magnetic field variations about 2 – 6 days before rather strong seismic shocks in a case study. It is revealed for night-time and for horizontal component intensity (G) in the frequency range 0.01 – 0.1 Hz. We prove a reliability of the effect by computed correlation between G (or $1/G$) and specially calculated seismic indexes K_s . Basing on the simple criteria we conclude that reliability of seismo-associated ULF suppression effect is comparable with well-known effect of relation between ULF variation and K_p index of global magnetic activity. Using K_s in our formulation for analysis of preseismic effect means indeed assumption that seismic shock is a result of some dynamic process (like instability) and intensity of preseismic perturbations is proportional to energy of seismic shock itself. Some justification of this approach contains in well-known correlation between magnitudes of foreshocks and main shock (see e.g. Scholz, 1990).

This effect can be also supposed in the previous observations at least in those where preseismic increase of polarization ratio had been found (see Introduction). As it is shown

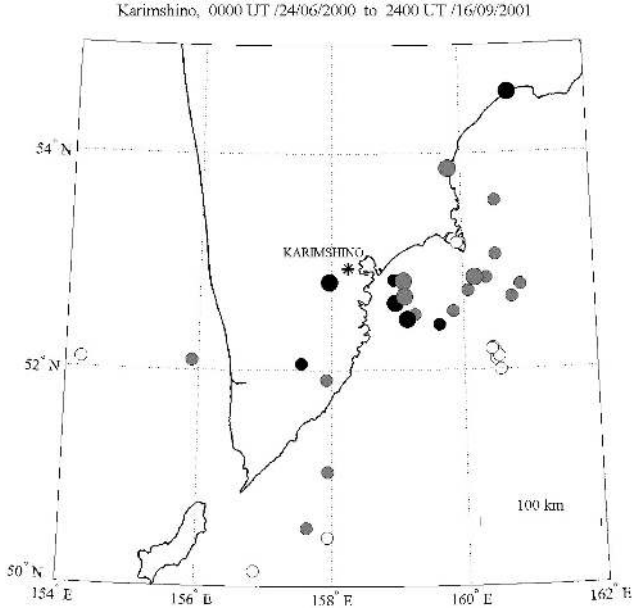


Fig. 4. Map of observation area at Kamchatka peninsula around Karimshino station (star). Positions of EQs with $K_S > 0.3$ are shown by big circles, positions of EQs with $0.03 < K_S < 0.3$ are shown by medium circles. Coloring is estimation of the suppression effect from case study: black is for clear effect, gray is for weak effect and blank is for questionable cases.

here a decrease of G could lead to observed increase of ratio Z/G . As mentioned above we need to take into consideration that ULF signal at Z component is more exposed to man-made interferences than response in horizontal components. Note furthermore that depression of variation of horizontal components of the magnetic field several days before main shock was noted in one of the first paper by Fraser-Smith et al. (1990). It was usually supposed that seismo-associated ULF variations could be either due to direct radiation from EQ origin zone (Fenoglio et al., 1995; Molchanov and Hayakawa, 1995) or due to a change of geoelectric conductivity inside and nearby EQ zone, which leads to the change of ULF waves generated by ionospheric sources (e.g. Merzer and Klemperer, 1997). The first mechanism is not compatible with our observational results because it predicts preseismic increase of ULF intensity. Indeed we have observed such an increase about 0.5 – 2 h before several EQ shocks but it can not be revealed in our statistics. Probably the interval of ULF increase could be extended essentially for the very large EQs up to a few days as reported earlier (see Introduction). However an explanation by preceding change of the ground conductivity is also not very attractive for us because long-time magnetotelluric observation in USA and Japan did not show any correlation with seismicity (see e.g. Park, 1997). It seems that suppression of ULF magnetic variation is happened not inside of the ground but in the lower ionosphere. A hint might be in results of monitoring of upper atmosphere and ionosphere around EQ date by VLF transmitter signals, which reported by Hayakawa et al. (1996b)

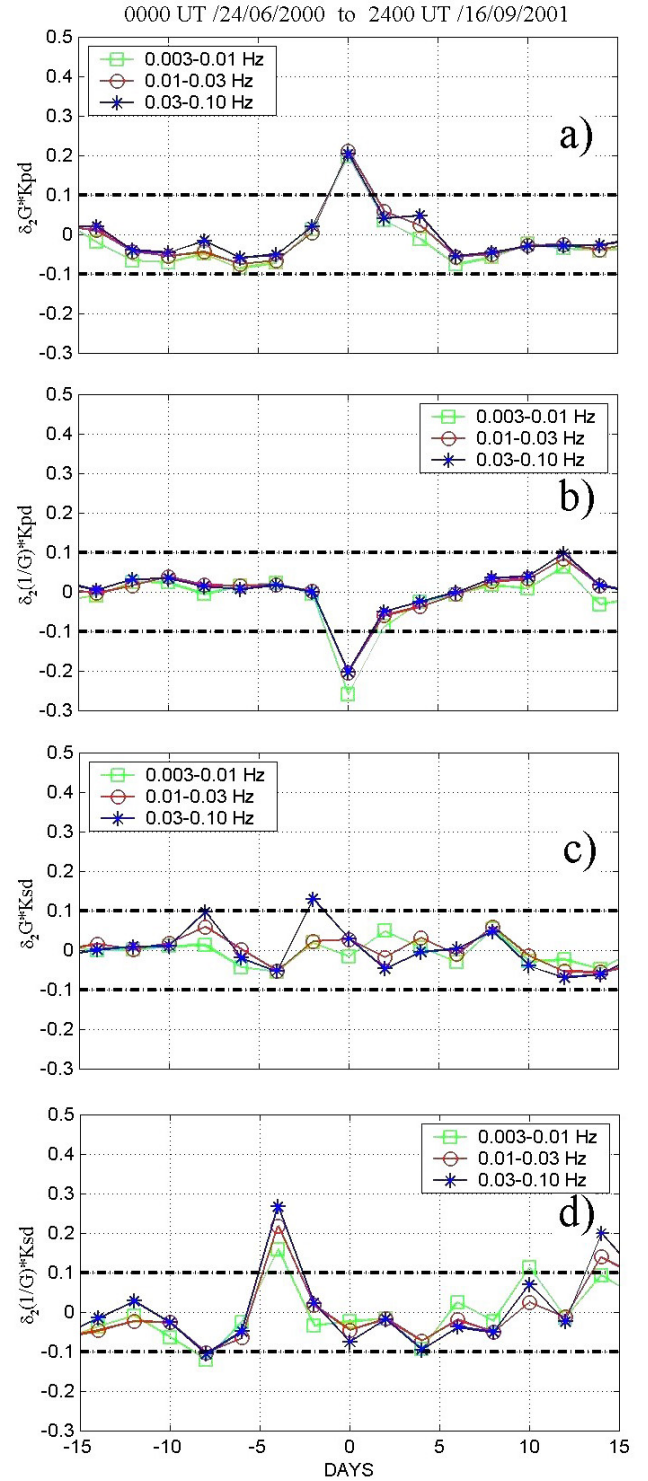


Fig. 5. Cross correlation of $\delta_2 G * K_p$ (a), $\delta_2(1/G) * K_p$ (b), $\delta_2 G * K_s$ (c) and $\delta_2(1/G) * K_s$ (d) in a range of ± 15 days for whole 13 months period of observation and different frequency bands.

and Molchanov et al. (2001). They found clear perturbations of atmosphere-ionosphere boundary several days before large EQs at nighttime or during night-to day transition (so-called terminator time).

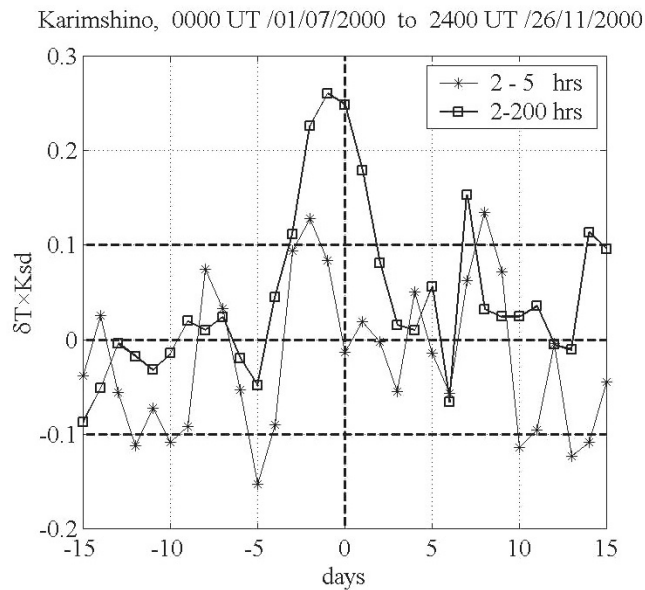


Fig. 6. Cross correlation of atmosphere temperature variations at Karimshino and K_s index during summer-autumn time of 2000 year (5 month) for periods 2–5 h (stars) and whole range of spectrum analysis 2–200 hours (squares).

Molchanov et al. (2001) provide arguments that water and gas eruptions before EQs could origin “mosaic” and “twinkle” spots of atmospheric temperature and density variations leading to generation of acoustic-gravity waves (AGW) turbulence with horizontal scales about 1–100 km. As considered by Mareev et al. (2002) and Alperovich et al. (2002), propagation of AGW perturbations into the ionosphere can modify plasma conductivity, which results in the loss of penetration ability for the ULF waves generated in the magnetosphere (magnetic pulsations). In order to justify such an approach we have produced the correlation analysis of atmospheric temperature variations observed by portable meteorostation at Karimshino. We exclude tidal variations by rejection of spectrum components with periods 24 ± 2 h, 12 ± 1 h, 8 ± 1 h and 6 ± 0.5 h and produce the analysis both for fast variations (periods $T = 2 - 5$ h) and slow variations ($T = 2 - 200$ h with rejection of tides). The results for the summer-autumn period of 2000 are presented in Fig. 6. They do not contradict to our point of view. Note that we cannot find this correlation for the interval winter 2000–spring 2001, when rather hard snowing happened at Kamchatka.

So, suggested here mechanism could be responsible for our effect though these perturbations can not be found in the conventional impedance analysis of the magneto-telluric fields.

Like some other non-seismic precursors our effect looks as sporadic one in a case study and can be recognized only by statistics. We believe that ULF-seismicity relation becomes more clear and regular after integration on space, i.e. using of network of stations, what we suppose to do in future.

Acknowledgements. This research was supported by ISTC grant

No. 1121, the work of OM was partially supported by the International Space Science Institute (ISSI) at Bern, Switzerland within the project “Earthquake influence of the ionosphere as evident from satellite plasma density-electric field data”.

References

- Aki, K. and Richards, P. G.: Quantitative seismology, W. H. Freeman and Company, San Francisco, 1, 545, 1980.
- Alperovich, L., Chaikovskiy, I., Gurvich, Yu., and Melnikov, A.: Laboratory modelling of the disturbed D- and E-layers: DC and AC fields, in: Seismo-Electromagnetics (Lithosphere-Atmosphere-Ionosphere Coupling), (Eds) Hayakawa, M. and Molchanov, O., TERRUPUB, 343–348, 2002.
- Fenoglio, M. A., Johnston, M. J. S., and Byerlee, J. D.: Magnetic and electric fields associated with changes in high pore pressure in fault zone-application to the Loma Prieta ULF emissions, *J. Geophys. Res. Solid Earth*, 100, 12 951–12 958, 1995.
- Fraser-Smith, A. C., Bernardy, A., McGill, P. R., Ladd, M. E., Helliwell, R. A., and Villard, Jr., O. G.: Low frequency magnetic field measurements near the epicenter of the Loma-Prieta earthquake, *Geophys. Res. Lett.*, 17, 1465–1468, 1990.
- Gladyshev, V., Baransky, L., and Schekotov, A., et al.: Some preliminary results of seismo-electromagnetic research at Complex Geophysical Observatory, Kamchatka, in: Seismo-Electromagnetics (Lithosphere-Atmosphere-Ionosphere Coupling), (Eds) Hayakawa, M. and Molchanov, O., TERRUPUB, 421–432, 2002.
- Gorbatikov, A. V., Molchanov, O. A., Hayakawa, M., Uyeda, S., Hattori, K., Nagao, T., Nikolaev, A. V., and Maltsev, P.: Acoustic emission possibly related to earthquakes, observed at Matsushiro, Japan and its implications, in: Seismo-Electromagnetics (Lithosphere-Atmosphere-Ionosphere Coupling), (Eds) Hayakawa, M. and Molchanov, O., TERRUPUB, 1–10, 2002.
- Hattori, K., Akinaga, Y., Hayakawa, M., Yumoto, K., Nagao, T., and Uyeda, S.: ULF Magnetic Anomaly Preceding the 1997 Kagoshima Earthquakes, in: Seismo-Electromagnetics (Lithosphere-Atmosphere-Ionosphere Coupling), (Eds) Hayakawa, M. and Molchanov, O., TERRUPUB, 19–28, 2002.
- Hayakawa, M., Kawate, R., Molchanov, O. A., and Yumoto, K.: Results of ultra-low-frequency magnetic field measurements during the Guam earthquake of 8 August, 1993, *Geophys. Res. Lett.*, 23, 241–244, 1996a.
- Hayakawa, M., Molchanov, O. A., Ondoh, T., and Kawai, E.: Anomalies in the sub-ionospheric VLF signals for the 1995 Hyogo-ken Nanbu earthquake, *J. Phys. Earth*, 44, 413–418, 1996b.
- Hayakawa, M., Ito, T., and Smirnova, N.: Fractal analysis of ULF geomagnetic data associated with the Guam earthquake on 8 August 1993, *Geophys. Res. Lett.*, 26, 2797–2800, 1999.
- Kanamori, H. and Anderson, D.: Theoretical basis of some empirical relations in seismology, *Bull. Seismol. Soc. Am.*, 65, 1073–1095, 1975.
- Kopytenko, Yu. A., Matiashvily, T. G., Voronov, P. M., Kopytenko, E. A., and Molchanov, O. A.: Detection of ULF emission connected with the Spitak earthquake and its aftershock activity based on geomagnetic pulsations data at Dusheti and Vardziya observatories, *Phys. Earth and Plan. Interiors*, 77, 85–95, 1993.

- Kopytenko, Yu. A., Ismaguilov, V. S., and Hattori, K., et al.: Monitoring of the ULF Electromagnetic Disturbances at the Station Network before EQ in Seismic zones of Izu and Chibo Peninsulas (Japan), in: *Seismo-Electromagnetics (Lithosphere-Atmosphere-Ionosphere Coupling)*, (Eds) Hayakawa, M. and Molchanov, O., TERRUPUB, 11–18, 2002.
- Mareev, E. A., Iudin, D. I., and Molchanov, O. A.: Mosaic source of internal gravity waves associated with seismic activity, in: *Seismo-Electromagnetics (Lithosphere-Atmosphere-Ionosphere Coupling)*, (Eds) Hayakawa, M. and Molchanov, O., TERRUPUB, 335–342, 2002.
- Merzer, M. and Klemperer, S. L.: Modeling low-frequency magnetic field precursors to the Loma Prieta earthquake with a precursory increase in fault-zone conductivity, *Pure and Appl. Geophys.*, 150, 217–248, 1997.
- Molchanov, O. A., Kopytenko, Yu. A., Voronov, P. M., Kopytenko, E. A., Matiashvili, T. G., Fraser-Smith, A. C., and Bernardy, A.: Results of ULF magnetic field measurements near the epicenters of the Spitak ($M_s = 6.9$) and Loma Prieta ($M_s = 7.1$) earthquakes: comparative analysis, *Geophys. Res. Lett.*, 19, 1495–1498, 1992.
- Molchanov, O. A. and Hayakawa, M.: Generation of ULF electromagnetic emissions by microfracturing, *Geophys. Res. Lett.*, 22, 3091–3094, 1995.
- Molchanov, O. A., Hayakawa, M., and Miyaki, K.: VLF/LF sounding of the lower ionosphere to study the role of atmospheric oscillations in the lithosphere-ionosphere coupling, *Adv Polar Upper Atmos. Res.*, N15, 146–158, 2001.
- Molchanov, O., Kulchitsky, A., and Hayakawa, M.: ULF emission due to inductive seismo-electromagnetic effect, in: *Seismo-Electromagnetics (Lithosphere-Atmosphere-Ionosphere Coupling)*, (Eds) Hayakawa, M. and Molchanov, O., TERRUPUB, 153–162, 2002.
- Park, S. K.: Monitoring resistivity change in Parkfield, California: 1988–1995, *J. Geophys. Res.*, 102, 24, 545–559, 1997.
- Scholz, C. H.: *The Mechanics of Earthquakes and Faulting*, Cambridge University Press, 1990.
- Uyeda, S., Nagao, T., and Hattori, K., et al.: Japanese-Russian Complex Geophysical Observatory in Kamchatka region for monitoring of phenomena connected with seismic activity, in: *Seismo-Electromagnetics (Lithosphere-Atmosphere-Ionosphere Coupling)*, (Eds) Hayakawa, M. and Molchanov, O., TERRUPUB, 413–419, 2002.