

RESEARCH

Open Access

Prevalence of low central venous oxygen saturation in the first hours of intensive care unit admission and associated mortality in septic shock patients: a prospective multicentre study

Thierry Boulain^{1*}, Denis Garot², Philippe Vignon^{3,4}, Jean-Baptiste Lascarrou⁵, Arnaud Desachy⁶, Vlad Botoc⁷, Arnaud Follin⁸, Jean-Pierre Frat⁹, Frédéric Bellec¹⁰, Jean-Pierre Quenot^{11,12}, Armelle Mathonnet¹, Pierre-François Dequin² and for the Clinical Research in Intensive Care and Sepsis (CRICS) Group¹³

Abstract

Introduction: In septic shock patients, the prevalence of low (<70%) central venous oxygen saturation (ScvO₂) on admission to the intensive care unit (ICU) and its relationship to outcome are unknown. The objectives of the present study were to estimate the prevalence of low ScvO₂ in the first hours of ICU admission and to assess its potential association with mortality in patients with severe sepsis or septic shock.

Methods: This was a prospective, multicentre, observational study conducted over a one-year period in ten French ICUs. Clinicians were asked to include patients with severe sepsis or septic shock preferably within 6 hours of ICU admission and as soon as possible without changing routine practice. ScvO₂ was measured at inclusion and 6 hours later (H6), by blood sampling.

Results: We included 363 patients. Initial ScvO₂ below 70% was present in 111 patients and the pooled estimate for its prevalence was 27% (95% Confidence interval (95%CI): 18% to 37%). At time of inclusion, among 166 patients with normal lactate concentration (≤ 2 mmol/L), 55 (33%) had a low initial ScvO₂ (<70%), and among 136 patients who had already reached the classic clinical endpoints for mean arterial pressure (≥ 65 mmHg), central venous pressure (≥ 8 mmHg), and urine output (≥ 0.5 mL/Kg of body weight), 43 (32%) had a low initial ScvO₂ (<70%). Among them, 49% had lactate below 2 mmol/L. The day-28 mortality was higher in case of low initial ScvO₂ (37.8% versus 27.4%; $P = 0.049$). When adjusted for confounders including the Simplified Acute Physiology Score and initial lactate concentration, a low initial ScvO₂ (Odds ratio (OR) = 3.60, 95%CI: 1.76 to 7.36; $P = 0.0004$) and a low ScvO₂ at H6 (OR = 2.18, 95%CI: 1.12 to 4.26; $P = 0.022$) were associated with day-28 mortality by logistic regression.

Conclusions: Low ScvO₂ was common in the first hours of admission to the ICU for severe sepsis or septic shock even when clinical resuscitation endpoints were achieved and even when arterial lactate was normal. A ScvO₂ below 70% in the first hours of ICU admission and six hours later was associated with day-28 mortality.

* Correspondence: thierry.boulain@chr-orleans.fr

¹Medical-Surgical Intensive Care Unit, Regional Hospital Center, Orléans, France

Full list of author information is available at the end of the article

Introduction

Central venous oxygen saturation ($S_{cv}O_2$) has long been studied as a prognostic marker and resuscitation end-point in patients with shock [1]. It is an imperfect surrogate of mixed venous oxygen saturation (S_vO_2) because it reflects the oxygen supply-to-consumption ratio of the upper part of the body only. However, $S_{cv}O_2$ is simple to measure either continuously or intermittently, and spontaneous or therapy-induced changes in $S_{cv}O_2$ and S_vO_2 are closely correlated [2].

Based on these principles, Rivers *et al.* [3] showed that an early therapeutic strategy that includes aiming for the rapid normalization of $S_{cv}O_2$ ($\geq 70\%$) in patients suffering from severe sepsis or septic shock at presentation to the emergency department could improve survival. Since then, international guidelines have recommended targeting $S_{cv}O_2$ at $\geq 70\%$ during the first 6 hours of care in patients presenting with severe sepsis or septic shock [4]. However, this recommendation remains controversial. Indeed, resuscitation protocols including an $S_{cv}O_2$ target have been mostly tested in the emergency department [5-7], not after ICU admission. Importantly, after ICU admission, targeting normal $S_{cv}O_2$ is deemed to have little place, as $S_{cv}O_2$ is frequently considered to be already normalized on ICU admission [8]. However, the prevalence of low $S_{cv}O_2$ ($< 70\%$) in ICU septic patients is poorly known. It has been assessed only in two prospective studies of limited size [9,10], while other studies have only reported the mean initial value of $S_{cv}O_2$ [8,11]. In addition, the relationship between low $S_{cv}O_2$ and outcome is still unknown.

Since the Rivers study [3], the idea that the relationship between low $S_{cv}O_2$ and fatal outcome in septic patients has been widely demonstrated has remained. Up to now, however, such a relationship has not been demonstrated in multicentre prospective studies performed either in the emergency department [12] or in the ICU [10]. Accordingly, the aim of the present multicentre observational prospective study was to estimate the prevalence of low $S_{cv}O_2$ in patients presenting with severe sepsis or septic shock after ICU admission, and to assess its potential association with outcome.

Materials and methods

The study took place in 10 French medical-surgical adult ICUs (4 university hospitals, 1 regional and teaching hospital, and 5 general hospitals) with a combined total of 154 ICU beds. Participating ICUs were asked to screen consecutive patients presenting with sepsis and circulatory failure for potential inclusion in the study, over a period left at their discretion, from July 2011 to June 2012.

Clinicians were asked to include patients with severe sepsis or septic shock, preferably within 6 hours of ICU admission, and as soon as possible without changing

routine practice. Patients were included if they had circulatory failure of septic origin (that is, severe sepsis or septic shock [13]) within 12 hours after ICU admission, and had an intra-arterial and superior vena cava (internal jugular or subclavian) catheter in situ. Circulatory failure was defined by either the use of vasopressor (septic shock) or, in case of severe sepsis, by a mean arterial pressure < 65 mmHg or a systolic arterial pressure < 90 mmHg at least twice over a 15-minute period, associated with at least one condition reflecting tissue hypoperfusion or low flow state (see Table 1, Criteria for circulatory failure at inclusion). Patients were not included in the case of brain death, admission following cardiac arrest, or if imminent death was expected.

Measurements and data collection

The measurement of $S_{cv}O_2$ was performed as soon as possible (at the time defined as zero hours (H0)) by sampling blood from the superior vena cava through the central venous catheter, and at 6 hours after inclusion (H6). $S_{cv}O_2$ was either calculated from blood gas analysis by a standard blood gas analyser in four centres, or measured by a co-oximeter in six centres. Concomitantly, arterial blood was drawn at each time point for blood gas analysis and lactate measurement. Other demographic, clinical and laboratory data prospectively recorded are provided in Additional file 1. Independent data monitoring was conducted in each site to ascertain the accuracy of recorded information.

The Ethics Committee of the teaching hospital of Limoges, France, approved the protocol for all hospitals involved (agreement number 65-2011-11) and waived the need for prior informed consent because the study procedures fulfilled the criteria of a non-interventional study as defined by the French Law [17]. Patients' next-of-kin and then patients themselves if they regained capacity were informed of their participation and their right to refuse the use of the obtained data was clearly established.

Haemodynamic monitoring and treatment of shock followed international [18] and national guidelines [19] that corresponded to standard of care of the participating centres. However, none of the participating ICUs had implemented systematic treatment algorithms based on $S_{cv}O_2$ monitoring.

Study objective

The study primary objective was to estimate the prevalence of low $S_{cv}O_2$ ($< 70\%$, but other thresholds were also tested) and to assess the possible association between low $S_{cv}O_2$ and day-28 mortality.

Data reporting and statistical analysis

Categorical data are expressed as percentages, and continuous variables are expressed as means \pm SD or

Table 1 Demographics, clinical characteristics, treatment and outcome in 363 patients

Variable	Value
Male sex	231 (63.6)
Age, years	65.8 ± 14.1
Severe sepsis at inclusion	25 (6.9)
Septic shock at inclusion	338 (93.1)
Nosocomial infection	98 (27.0)
Source of infection	
Lung-pleura	165 (45.7)
Abdomen	83 (23.0)
Urine	45 (12.5)
Skin, bones, joints	30 (8.3)
Catheter	7 (1.9)
Central nervous system	6 (1.7)
Endocarditis	6 (1.7)
Other	8 (2.2)
Source not identified	11 (3.0)
Underlying disease	
Chronic obstructive pulmonary disease	63 (17.4)
Arterial hypertension	198 (54.5)
Chronic heart failure	36 (9.9)
Liver cirrhosis	27 (7.4)
Chronic haemodialysis	8 (2.2)
Type 1 diabetes	15 (4.1)
Type 2 diabetes	85 (23.4)
Immunocompromized state	110 (30.3)
Active solid cancer	45 (12.4)
Active lymphoma or leukaemia	22 (6.1)
Myeloproliferative syndrome	12 (3.3)
Recent (<6 months) chemotherapy or radiotherapy	42 (11.6)
Neutropenia (absolute neutrophil count <1,000/mm ³)	27 (7.4)
HIV seropositivity	4 (1.1)
Solid organ or bone marrow transplantation	6 (1.7)
Steroids therapy	41 (11.3)
Other immunosuppressive therapy	14 (3.9)
Criteria for circulatory failure at inclusion (in addition to recent or ongoing hypotension)	
Tachycardia (heart rate >110 beats/minute)	195 (53.7)
Urine output <0.5 mL/hour per Kg of body weight	147 (40.5)
Capillary refill time >2 seconds	48 (13.2)
Cyanosis in the absence of severe hypoxemia	56 (15.4)
Skin mottling	167 (46.0)
Altered consciousness	77 (21.2)
Arterial lactate >2 mmol/L on admission	190 (52.3)
Epinephrine or norepinephrine administration	338 (93.1)

Table 1 Demographics, clinical characteristics, treatment and outcome in 363 patients (Continued)

Therapy	
Invasive mechanical ventilation on admission	128 (35.2)
Invasive mechanical ventilation during ICU stay	305 (84.0)
Norepinephrine on admission	136 (37.5)
Epinephrine on admission	10 (2.8)
Norepinephrine or epinephrine during ICU stay	356 (98.1)
Dobutamine on admission	12 (3.3)
Transfusion of blood products between zero hours and 24 hours	58 (16.6)
Renal replacement therapy during ICU stay	84 (23.1)
Initial arterial blood lactate concentration, mmol/L^a	3.2 ± 3.0 median 2.2 (IQR 0.95 to 4.45)
McCabe classification [14]	
0	223 (61.4)
1	96 (26.4)
2	44 (12.1)
Simplified acute physiology score II [15]	56.8 ± 20.0
SOFA score [16] (highest value from H0 to H24)	10.3 ± 3.4
ICU death	102 (28.1)
Day-28 death	111 (30.6)

Categorical variables are expressed as absolute counts (%) and continuous variables as mean ± SD unless otherwise specified. ^aInitial arterial blood lactate concentration was available in 358/363 patients (not measured in 5 patients because of technical problem). SOFA, Sequential organ failure assessment.

medians and IQR, as appropriate. The prevalence and 95% CI of $S_{cv}O_2 < 70\%$ was estimated taking into account participating centres as a random effect [20]. The $S_{cv}O_2 < 70\%$ and other thresholds of initial $S_{cv}O_2$ values determined by locally weighted scatterplot smoothing (LOWESS) [21] were examined for their potential association with day-28 mortality.

Each given threshold of the initial $S_{cv}O_2$ value was entered in a mixed-effect logistic regression model, with participating centres entered as a random effect, and adjusted for all covariables available at H0 and linked to day-28 mortality with a P -value <0.15, by univariate analysis. The covariables were eliminated using the backward method until the final logistic model with the best fit (as assessed by the Akaike information criterion [15]) was reached. Based on the results of a retrospective study performed in one participating ICU [22], we calculated that 1-year study duration would allow the inclusion of at least 350 patients with 100 fatalities, which would allow multivariate evaluation of ten covariables, including $S_{cv}O_2$.

We re-ran the logistic analyses in predefined subgroups of patients (for example, mechanical ventilation or not at H0, patients below or above median values of continuous

variables such as initial lactate level or amount of volume expansion before inclusion, et cetera).

Percentages were compared using the Fisher exact test, chi-square test, or chi-square test for trend (Cochran-Armitage test), and continuous variables were compared using the unpaired Student *t*-test or by analysis of variance when appropriate. Unadjusted comparisons of survival curves were performed using the log-rank test. Adjusted odds ratios (OR) are given with the 95% CI. A two-tailed *P*-value <0.05 was considered statistically significant. Mixed-effect logistic regression was performed using the lme4 package of R 2.15.2 [23].

Results

We screened 670 patients with severe sepsis or septic shock. Among them, 363 patients were enrolled (Figure 1). The Simplified acute physiology score (SAPSII) [24] and ICU death rates were similar in enrolled and non enrolled patients (see Additional file 2).

Demographic and clinical characteristics are shown in Table 1. The median time between ICU admission and inclusion (H0), and between the time at which criteria for inclusion were satisfied and inclusion, was 211 minutes (IQR 83 to 339) and 189 minutes (IQR 84 to 292), respectively. The median time between severe sepsis identification and inclusion (H0) was 7.6 hours (IQR 2 to 13.2). Details of resuscitation administered before inclusion and time of inclusion in patients classified according to their origin (transferred from another hospital, from the ward, or from the emergency department) are shown in Table 2.

The mean initial $S_{cv}O_2$ value was $74.1 \pm 11.0\%$ and was not different between survivors and non survivors at day 28 ($74.6 \pm 10.0\%$ versus $73.0 \pm 12.9\%$, respectively; *P* = 0.21).

Prevalence of low initial $S_{cv}O_2$

Initial $S_{cv}O_2 < 70\%$ was present in 111 patients and the pooled estimate for its prevalence, taking into account participating centres as a random effect, was 27% (95% CI 18%, 37%). At H0, 136 patients (37%) had reached the classic clinical endpoints for mean arterial pressure (≥ 65 mmHg), central venous pressure (≥ 8 mmHg), and urine output (≥ 0.5 mL/Kg of body weight). Among them, 32% (43/136) had an initial $S_{cv}O_2 < 70\%$, with normal lactate concentration (≤ 2 mmol/L) in 21 (49%) patients. At H0, 166 patients (46%) had normal lactate concentration (≤ 2 mmol/L). Among them, 55 (33%) had an initial $S_{cv}O_2 < 70\%$. The delay between severe sepsis identification and inclusion and the amount of fluids administered for resuscitation before inclusion had no influence on the mean initial $S_{cv}O_2$ values or on the proportions of patients with initial $S_{cv}O_2 < 70\%$ (see Additional file 3).

Crude day-28 death rate and initial $S_{cv}O_2$ level

As determined by visual inspection of the LOWESS plot (see Additional file 4), we assessed the association between day-28 mortality and initial $S_{cv}O_2 < 70\%$, $< 75\%$, and $> 85\%$. The day-28 death rate was significantly higher in patients with initial $S_{cv}O_2 < 70\%$ than in patients with initial $S_{cv}O_2 \geq 70\%$ (42/111 (37.8%) versus 69/252 (27.4%), respectively; *P* = 0.049), whereas it was similar in patients with initial $S_{cv}O_2$ below or above the other thresholds examined (all *P*-values > 0.35) (see Additional file 5: Table E8).

Association between $S_{cv}O_2$ and mortality when adjusted for potential confounders

The initial $S_{cv}O_2$ entered in the logistic model as a continuous variable was negatively linked to day-28 mortality: OR = 0.96 (95% CI 0.93, 0.99) for each 1% increase in initial $S_{cv}O_2$; *P* = 0.004 (see Additional file 5: Table E9). An initial $S_{cv}O_2 < 70\%$ was significantly and independently associated with day-28 mortality (OR = 3.60, 95%CI 1.76, 7.36; *P* = 0.0004) (Table 3), a trend consistently observed across the different subgroups examined (Figure 2).

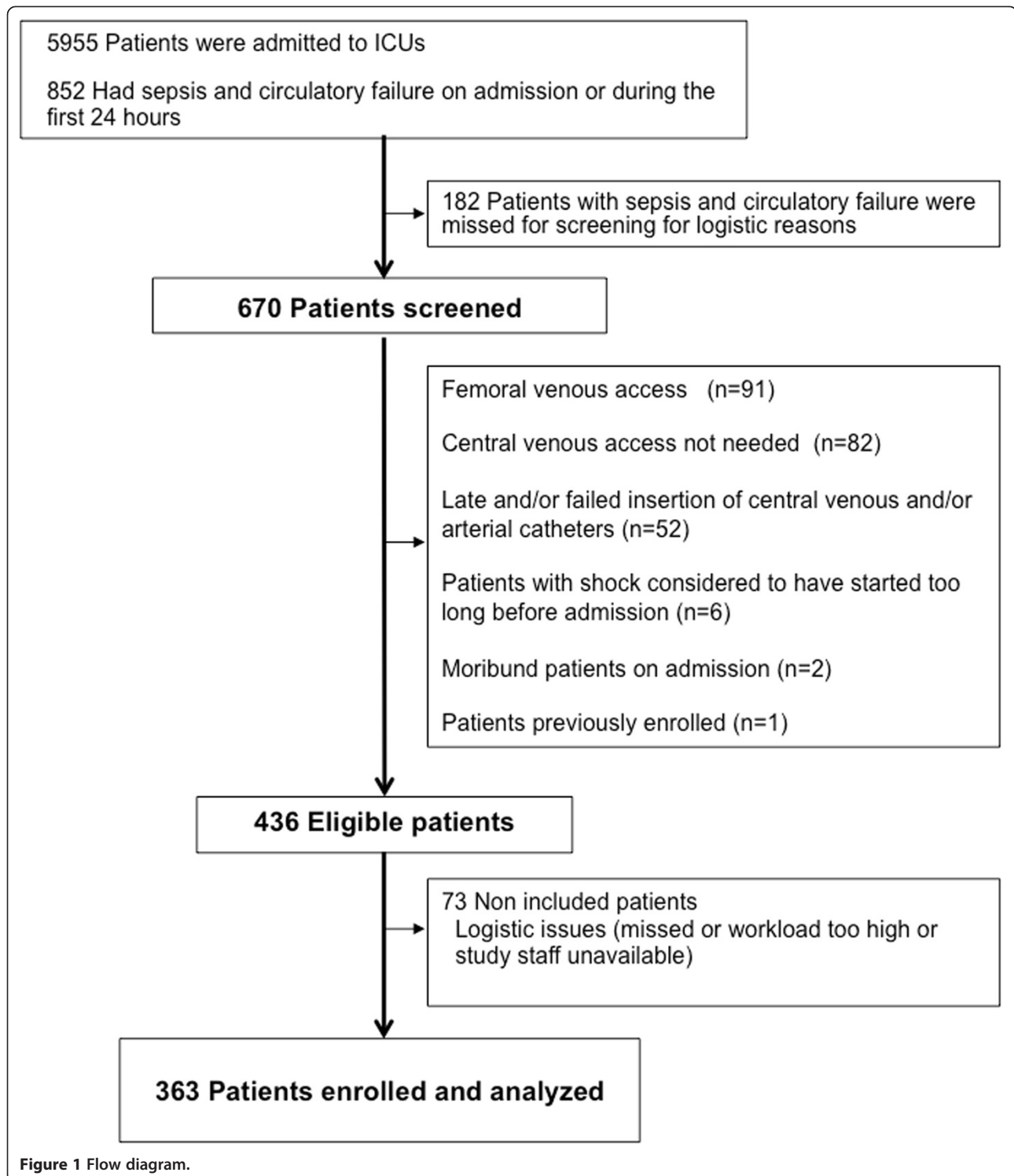
An initial $S_{cv}O_2 < 75\%$ was also significantly associated with day-28 mortality (OR = 2.15, 95% CI 1.16 to 3.98; *P* = 0.015) (see Additional file 5: Table E10).

Evolution of $S_{cv}O_2$ and relationship to lactate concentration

The evolution of $S_{cv}O_2$ between H0 and H6 was similar between survivors and non survivors on day 28 (see Additional file 6: Figure E3). However, by logistic regression analysis, a $S_{cv}O_2 < 70\%$ at H6 still appeared as a risk factor for day-28 death (OR = 2.18, 95% CI 1.12, 4.26; *P* = 0.022) (see Additional file 5: Table E11).

The proportion of patients with initial $S_{cv}O_2 < 70\%$ was similar in the case of lactate above or below the median initial lactate value of 2.2 mmol/L (29% versus 33%; *P* = 0.3). Figure 3 shows the survival curves and the crude death rates at day 28 in four patients' subgroups according to their lactate concentration and $S_{cv}O_2$ at H0 (for subgroups according to lactate and $S_{cv}O_2$ at H6 see Additional file 6: Figure E4). In subgroup analysis, the logistic regression showed that $S_{cv}O_2 < 70\%$ was independently associated with day-28 death in patients with initial lactate level < 2.2 mmol/L (OR = 3.31) (Figure 2).

Among the 335 patients with lactate and $S_{cv}O_2$ measured at H0 and H6, 148 (44%) had a satisfactory lactate clearance (defined as at least a 10% decrease between H0 and H6 [25]) and 187 (56%) had not. The proportion of patients with $S_{cv}O_2 < 70\%$ at H6 was similar in the case of satisfactory or not satisfactory lactate clearance (22% versus 23%, respectively). Additional file 6: Figure E5 shows the survival curves



and the crude death rates at day-28 in four patients' subgroups according to their lactate clearance and $S_{cv}O_2$ at H0 and H6. On logistic regression, $S_{cv}O_2 < 70\%$ at H6 was independently associated with day-28 mortality in the subgroup of patients with non satisfactory lactate clearance (OR = 2.32 (1.03, 5.23)) but

not in patients with satisfactory lactate clearance (OR = 0.98 (0.21, 4.54)). Additional results for the roles played by initial respiratory conditions, haemoglobin concentration and body temperature in the prevalence of low $S_{cv}O_2$ and mortality are given in Additional file 7.

Table 2 Time of inclusion and resuscitation administered before inclusion

	Patients transferred from another hospital (n = 93)	Patients transferred from the ward (n = 95)	Patients transferred from the emergency department (n = 175)
Patients intubated before inclusion	73 (78%)	72 (77%)	118 (67%)
Amount of fluid administered before inclusion, mL/Kg of body weight	31 (12 to 50)	35 (19 to 51)	36 (20 to 52)
Patients treated with vasopressors before inclusion (epinephrine or norepinephrine)	84 (88%)	82 (90%)	155 (89%)
Dosage of vasopressors (epinephrine + norepinephrine), µg/Kg/min	0.3 (0.09 to 0.51)	0.26 (0.12 to 0.38)	0.40 (0.13 to 0.66)
Patients treated with dobutamine before inclusion	3 (3%)	3 (3%)	10 (6%)
Time between severe sepsis identification and inclusion, minutes	482 (220 to 510)	396 (40 to 847)	468 (188 to 696)
Time between ICU admission and inclusion, minutes	185 (53 to 317)	246 (92 to 400)	206 (97 to 315)
Time between satisfaction of inclusion criteria and inclusion, minutes	231 (110 to 352)	161 (60 to 262)	185 (93 to 277)

Continuous variables are expressed as median and IQR, and categorical variables as number (%).

Discussion

The main finding of our study is that more than one quarter of septic patients had ScvO₂ < 70% in the first hours after ICU admission. Furthermore, low ScvO₂ in the first hours of ICU admission (and/or 6 hours later) was independently associated with 28-day mortality. These data suggest that one quarter of septic patients admitted to the ICU could be candidates for ICU protocol-based therapy targeting ScvO₂.

Prevalence of low ScvO₂

In the present multicentre study, using ScvO₂ measurements planned as early as possible in routine care, we report a 27% prevalence of low ScvO₂ (<70%). This value is below the 40% to 50% prevalence reported in the few, small sized, available prospective studies performed to date in the ICU [9,10]. These studies analysed selected patients: one study analysed only half of the patients with lactate above 3 mmol/L enrolled in a comparative therapeutic trial [9], and the other study excluded patients with malignancy [10]. However, the 27% prevalence of low ScvO₂ we observed in our study with few exclusion criteria represents a non negligible proportion of septic patients and does not support the

view that low ScvO₂ is uncommon after admission to the ICU [5-8].

Importantly, even when classic clinical endpoints of initial resuscitation were achieved (mean blood pressure (BP) >65 mmHg, central venous pressure (CVP) > 8 mmHg and urine output >0.5/ml/Kg) low ScvO₂ could not be ruled out as it was observed in one third of our apparently resuscitated patients. Furthermore, arterial lactate also misclassified patients in their low/high contemporaneous ScvO₂: the prevalence of ScvO₂ < 70% was similar in the case of lactate above or below the median value of 2.2 mmol/L (29% versus 33%; *P* = 0.3). This underlines that ScvO₂ measurement is not interchangeable with these routine clinical and biological data.

Association between low ScvO₂ and outcome

As expected, the SAPSII score and the arterial lactate consistently appeared as powerful predictors of day-28 death. Independently of these two well-known predictors [24,26], low initial ScvO₂ was also consistently linked to day-28 mortality. To the best of our knowledge, this has never been previously shown in either emergency department or ICU studies. Of note, our study was not designed to assess whether the link between low ScvO₂ and mortality is a causal relationship.

Table 3 Logistic regression analysis of 28-day mortality in 363 septic patients, with initial $S_{cv}O_2$ value below 70% adjusted for the other confounders

Covariables ^a	Adjusted odds ratio ^b	95% CI	P-value
SAPSI (for each 1 point increase)	1.05	1.03, 1.07	<0.00001
Initial $S_{cv}O_2 < 70\%$	3.60	1.76, 7.36	0.0004
Arterial lactate (for each 1 mmol/L increase)	1.18	1.06, 1.32	0.002
Initial arterial partial pressure in CO ₂ (for each 1 mmHg increase)	1.04	1.01, 1.06	0.003
McCabe class 1 (versus class 0)	2.58	1.31, 5.10	0.006
Abdominal sepsis	2.56	1.25, 5.23	0.010
McCabe class 2 (versus class 0)	3.09	1.24, 7.72	0.016
Male gender	2.14	1.11, 4.13	0.022
Initial body temperature (for each 1°C increase)	0.78	0.62, 0.98	0.031
Exposure to ACE inhibitors or ARB in the past 48 hours	0.50	0.26, 0.98	0.044

^aAll covariables entered in the model were variables linked to day-28 mortality with $P < 0.05$ on univariate analysis, and selected using the backward method.

^bFor each continuous covariable odds ratios are given per each unit of the given covariable. ACE, angiotensin-converting enzyme; ARB, angiotensin II receptor blockers; SAPSI, Simplified acute physiology score; $S_{cv}O_2$, central venous oxygen saturation.

Clinical perspectives

One quarter of our septic patients had low $S_{cv}O_2$ in the first hours of ICU admission and this was associated with poor outcome. This was also the case for persisting low $S_{cv}O_2$ (at 6 hours after the first measurement). These patients could be candidates for ICU protocol-based therapy targeting the $S_{cv}O_2$ in addition to routine initial care. The choice between lactate-guided, $S_{cv}O_2$ -guided therapy, or between both, is still under debate [27]. In emergency department septic patients, there is no significant difference in patients' outcomes when managed either with lactate-guided or $S_{cv}O_2$ -guided therapy [28]. Interestingly, our results suggest that, rather than choosing one of these measurements, $S_{cv}O_2$ should be tested in combination with lactate monitoring because low $S_{cv}O_2$ may be present or persist even in the case of low lactate, or in the case of satisfactory lactate clearance (see Figure 3 and Additional file 6). This later finding was also observed in studies performed in emergency department patients in the very early phase of resuscitation: Arnold *et al.* [29] have shown that 15% of patients with good lactate clearance and 21% of patients with poor lactate clearance had $S_{cv}O_2 < 70\%$; in the study by Jones *et al.* [28], an interventional, randomized trial comparing lactate clearance or $S_{cv}O_2 > 70\%$ as therapeutic targets, the proportion of patients who did not have normalized $S_{cv}O_2$ was 19% in both groups. This proportion is lower than the one we observed but may not reflect what happens in real conditions, as resuscitation was performed per protocol for the purpose of the randomized trial. For their part, Jansen *et al.* [9] compared usual care and protocol-based therapy with lactate clearance as a target in an ICU population of septic patients, and showed that at 6 hours, 33% of patients in the intervention group still had $S_{cv}O_2 < 70\%$ while more than 40% had lactate clearance $> 20\%$.

Although these findings are consistent with ours, once again they may not reflect the real-life conditions as the patients were treated according to a rigorous and complex protocol. Therefore, to our knowledge, our study is the first to show that $S_{cv}O_2$ and lactate may show non parallel evolutions in septic patients cared for in the ICU in real-life conditions.

The usefulness of protocol-based resuscitation including the normalization of $S_{cv}O_2$ has been recently challenged by the ProCESS trial [30], a randomized trial conducted in emergency departments in the very early phase of resuscitation of septic patients. This study showed no advantage in terms of survival with the protocol-based therapy including the normalization of $S_{cv}O_2$ as compared to usual care [30]. Of note, the ProCESS trial population was quite different from that we studied in our work, in which we estimated the prevalence of $S_{cv}O_2$ and of persisting $S_{cv}O_2$ in ICU patients, after the initial phase of resuscitation. On the other hand, in 1995 Gattinoni *et al.* [31] also showed that therapy aimed at normalizing the SvO_2 value did not lead to better outcome than standard care in a general population of critically ill patients. Their results cannot be transposed to our study population as they included fewer than 25% of septic patients, and included them more than 48 hours after ICU admission [31], a time frame quite different from that used for inclusion in our work. For these reasons we believe it is premature to abandon the concept of normalization of $S_{cv}O_2$ in severely septic patients admitted to the ICU for whom low $S_{cv}O_2$ cannot be neglected, given its association with increased day-28 mortality. Further studies are required to precisely identify which ICU patients would benefit from therapeutic strategies aimed at $S_{cv}O_2$ normalization.

The LOWESS plot (see Additional file 4) used to identify cutoff values of initial $S_{cv}O_2$ illustrates that below $S_{cv}O_2$ of 75%, the lower the $S_{cv}O_2$ the lower was the

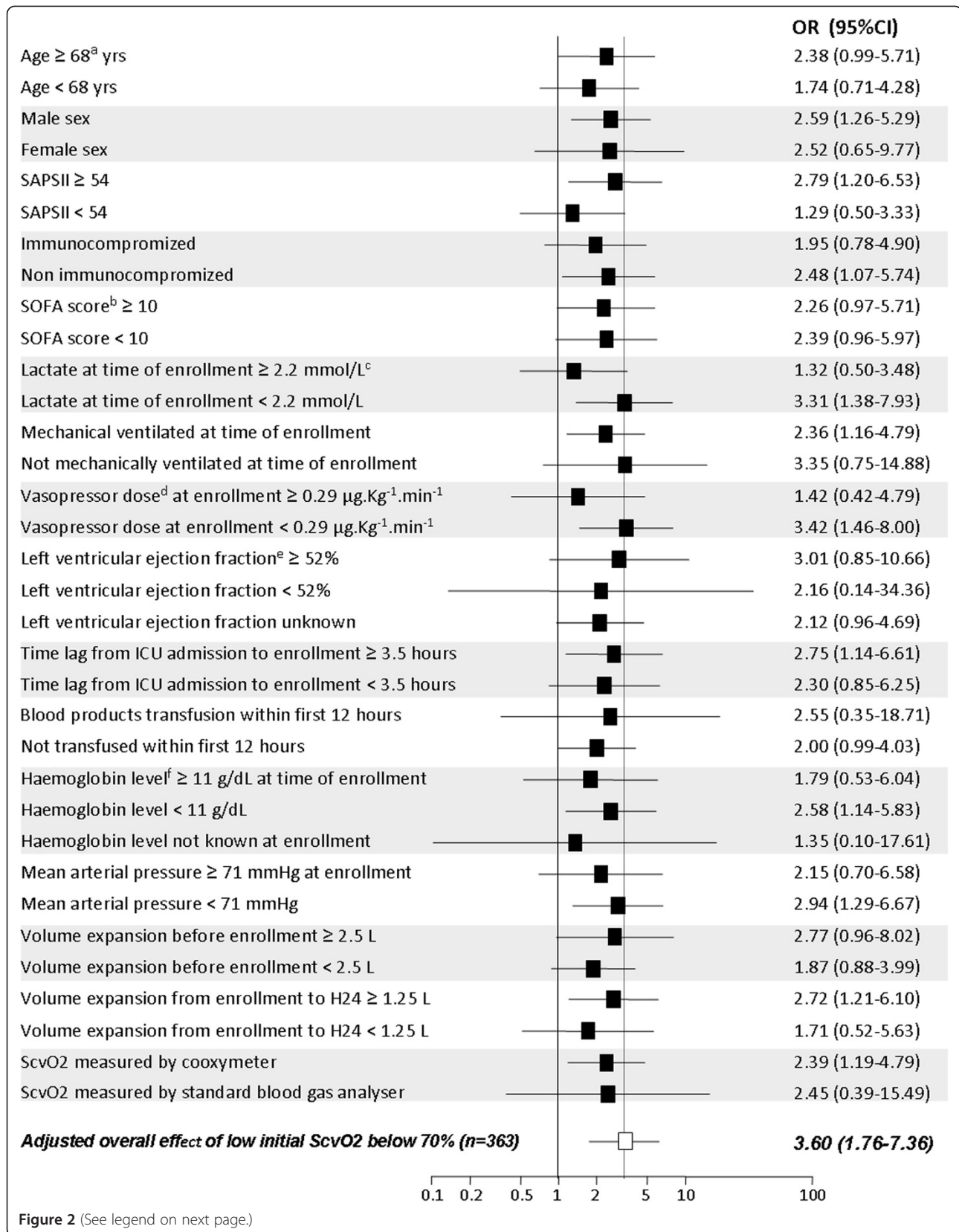


Figure 2 (See legend on next page.)

(See figure on previous page.)

Figure 2 Forest plot for subgroup analysis. ^aAll cutoff values provided in the figure for demographic, clinical or laboratory variables are median values calculated on the whole study population. ^bSequential organ failure assessment (SOFA) score is the highest value during the first 24 hours after enrollment. ^cWith the use of a cutoff of 2 mmol/L for lactate, the odds ratio for day-28 death (OR) was 1.29 (0.54, 3.05) in the case of lactate >2 mmol/L, and 4.59 (1.79, 11.84) in the case of lactate ≤2 mmol/L. ^dVasopressor dose = continuous intravenous (iv) norepinephrine dose plus continuous iv epinephrine dose. ^eLeft ventricular ejection fraction assessed by transthoracic echocardiography before 24 hours after enrollment. ^fHaemoglobin concentration was taken into account only if measured between 6 hours before and 6 hours after enrollment. SAPSII, Simplified acute physiology score; ScvO₂, central venous oxygen saturation.

survival. Hence, $S_{cv}O_2 < 75\%$ was also associated with day-28 mortality in our multivariate analysis. This cutoff of 75% for worse outcome in our septic patients is higher than that found in cardiac failure patients [32,33]. This is consistent with the physiopathology of septic shock in which microcirculatory shunts lead to intra-organ oxygen extraction impairment that necessitates maintaining a high level of oxygen delivery to ensure adequate organ oxygen uptake [34]. Beyond the confirmation that $S_{cv}O_2$ of 70% is an important threshold for patient outcome, our study also suggests that, in septic patients, $S_{cv}O_2$ of 75% could be an even more relevant target that best ensures that overall tissue oxygenation is adequate in the context of septic oxygen extraction impairment. However, the thresholds of $S_{cv}O_2$ that could be proposed after the visual inspection of the LOWESS plot were statistically estimated cutoff values in the entire study population that may not apply at the individual level. Therefore, $S_{cv}O_2$ value of 67% for instance does not

necessarily place a given patient in a dangerous condition, and conversely an $S_{cv}O_2$ of 73% should not be seen as necessarily reassuring. In fact each individual patient probably has his/her own threshold from which it could be dangerous to deviate, depending on how his/her tissues are trained to extract oxygen in situations of high oxygen demand [35] or insufficient oxygen transport, and depending on the intensity of the microcirculatory shunts [36] linked to the severity of the sepsis process. In relation with this later issue, high values of ScvO₂ may reflect the intensity of the microcirculatory derangements caused by sepsis. Some studies have suggested that either ScvO₂ higher than 80% within the first 3 days in the ICU [37] or ScvO₂ higher than 90% in the emergency department [38], were markers of poor prognosis. Indeed, although our study was underpowered to specifically examine the role of high values of $S_{cv}O_2$, we also observed that, beyond the threshold of 75%, the higher the $S_{cv}O_2$, the lower was the survival (see Additional file 4).

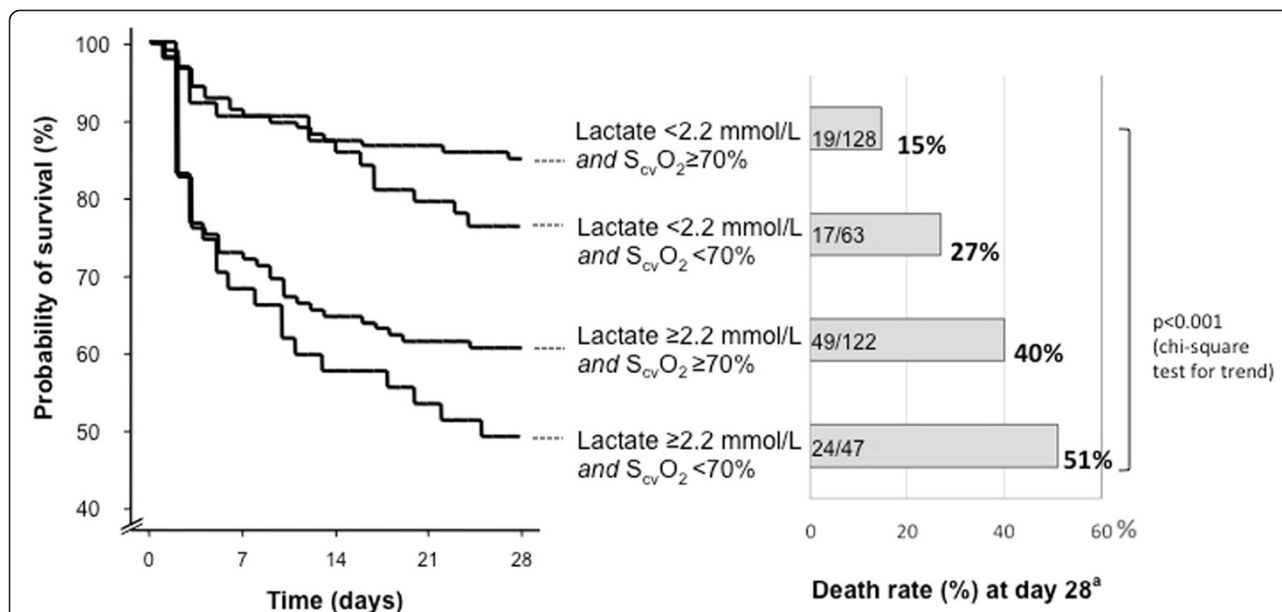


Figure 3 Survival curve and death rate (%) at day 28 according to initial lactate level and central venous oxygen saturation ($S_{cv}O_2$). The left part of the figure shows survival curves in four patients' subgroups according to their initial zero hours (H0) lactate concentration and $S_{cv}O_2$. The right part of the figure shows the day-28 death rate in each subgroup. Numbers inside the bars are number of non survivors/total number of patients in each subgroup. ^aUnadjusted pair comparison of survival curves between the different subgroups were not statistically significant on log-rank test. ^bThere was no significant difference in crude death rate at day-28 among the four groups (chi-squared test). However, there was a significant global trend towards higher death rate from the condition with normal lactate and $S_{cv}O_2$ to the condition with high lactate and low $S_{cv}O_2$ ($P < 0.001$, Cochran-Armitage test).

Limitations of the study

First, this study was not designed to seek for the reasons of low $S_{cv}O_2$. Since we have not systematically measured cardiac output, we cannot distinguish between the roles played by too-low oxygen delivery on the one hand and too-high oxygen demand on the other hand. Second, our study was clearly underpowered to draw conclusions about the significance of high $S_{cv}O_2$ values. Third, in view of our inclusion rate, selection bias cannot be definitely ruled out. However, patients were not selected on the basis of the variable of interest ($S_{cv}O_2$), which was not known during the screening/enrolment process. Additionally, enrolled and non enrolled patients' characteristics were similar (see Additional file 2). Moreover, as shown in Additional file 2, the proportion of patients with low $S_{cv}O_2$ consistently ranged from around 24% to 36% in subgroups of patients classified according to their cardiac or respiratory status, or to the timing and intensity of therapeutic interventions performed before inclusion. Fourth, $S_{cv}O_2$ was not measured by the same method in all participating centres, as four used standard blood gas analysers and six used co-oximeters. This might have distorted the accurate determination of cutoff values of $S_{cv}O_2$, because the limits of agreement between both methods are wide [39]. However, this does not impair the general interpretation of our results as a majority (265/363) of the included patients had $S_{cv}O_2$ measured by co-oximetry and the link between low $S_{cv}O_2$ and day-28 mortality remained statistically significant in this patient subgroup.

Conclusion

Our study demonstrated that, in septic patients, low levels of $S_{cv}O_2$ in the first hours of ICU admission were frequent (<70% for more than one quarter), even when clinical resuscitation endpoints are achieved and even when arterial lactate was normal. Importantly, $S_{cv}O_2$ in the first hours of ICU admission and/or six hours later was linked to day-28 mortality.

Key messages

- In septic shock patients, low $S_{cv}O_2$ (<70%) is common in the first hours of admission to the ICU
- In septic shock patients, low $S_{cv}O_2$ (<70%) in the first hours of admission to the ICU is associated with increased day-28 mortality
- In addition to usual care, ICU protocol-based therapy targeting $S_{cv}O_2$ may be tested in controlled trials in septic patients with low or persisting low $S_{cv}O_2$ in the first hours of ICU admission

Additional files

Additional file 1: Clinical and laboratory data recorded.

Additional file 2: Comparison of enrolled and non enrolled patients and proportions of patients with low central venous oxygen saturation ($S_{cv}O_2$) in patients' subgroups.

Additional file 3: Inclusion delays and resuscitation before inclusion: influence on central venous oxygen saturation ($S_{cv}O_2$).

Additional file 4: Association between central venous oxygen saturation ($S_{cv}O_2$) and day-28 survival as assessed by locally weighted scatterplot smoothing (LOWESS) plot.

Additional file 5: Thresholds of central venous oxygen saturation ($S_{cv}O_2$) and mortality: bivariate and multivariate analyses.

Additional file 6: Evolution of central venous oxygen saturation from hour-zero (H0) to H6.

Additional file 7: Roles of respiratory condition, haemoglobin, and body temperature.

Abbreviations

LOWESS: locally weighted scatterplot smoothing; OR: adjusted odds ratios; SAPSII: Simplified acute physiology score; $S_{cv}O_2$: central venous oxygen saturation; S_vO_2 : mixed venous oxygen saturation.

Competing interests

The authors declare that they have no competing interests.

Authors' contributions

TB conceived and coordinated the study, obtained funding, participated in the acquisition, analysis and interpretation of data, performed the statistical analysis and drafted the manuscript. DG participated to the study design, participated to the acquisition, analysis and interpretation of data, and helped to draft the manuscript. PV participated in the study design and acquisition, analysis and interpretation of data, and helped to draft the manuscript. AM, JBL, AD, VB, AF, JPF, FB and JPQ all participated in the study design and the acquisition, analysis and interpretation of data. PFD participated in the study design and the acquisition, analysis and interpretation of data, and helped to draft the manuscript. All authors read and approved the final manuscript.

Authors' information

Clinical Research in Intensive Care and Sepsis (CRICS) Group (<http://www.crics.fr>).

Acknowledgments

We are indebted to all participating investigators who collected data and cared for study patients: Olivier Baudin, Sylvie Calvat, Christophe Cracco, Arnaud Desachy, Charles Lafon (Angoulême, CRICS group); Emmanuelle Boitrou, Hervé Mentec, Olivier Pajot, Gaëtan Plantefève, Marina Thirion (Argenteuil, CRICS group); Rémi Bruyère, Jean-Pierre Quenot (Dijon, CRICS group); Konstantinos Bachoumas, Maud Fiancette, Jean Claude Lacherade, Jean Baptiste Lascarrou, Christine Lebert, Laurent Martin-Lefèvre, Jean Reignier, Isabelle Vinatier, Aihem Yehia (La Roche sur Yon, CRICS group); Emmanuelle Begot, Remy Bellier, Marc Clavel, Bruno François, Antoine Galy, Nicolas Pichon, Philippe Vignon (Limoges, CRICS group); Patrick Bardou, Michel Bonnivard, Anne Marco, Jérôme Roustan, Sylvie Vimeux (Montauban, CRICS group); Anne Bretagnol, Armelle Mathonnet, Dalila Benzekri, Nicolas Bercault, Thierry Boulain, Toufik Kamel, Grégoire Muller, François Réminiac, Isabelle Runge, Marie Skarzynski (Orléans, CRICS group); Delphine Chatellier, Rémi Coudroy, Jean-Pierre Frat, Véronique Goudet, René Robert, Anne Veinstein (Poitiers, CRICS group); Vlad Botoc, Stéphanie Chevalier, François Collet, Jean-Paul Gouello (Saint-Malo); Julie Badin, Pierre-François Dequin, Denis Garot, Antoine Guillon, Annick Legras, Elodie Masseret, Emmanuelle Mercier, Patrice Talec, (Tours, CRICS group).

Author details

¹Medical-Surgical Intensive Care Unit, Regional Hospital Center, Orléans, France. ²Medical Intensive Care Unit, University Hospital, Tours, France. ³Medical-Surgical Intensive Care Unit, University Hospital, Limoges, France. ⁴CIC-P 1435, Inserm U1092, Limoges, France. ⁵Medical-Surgical Intensive Care Unit, District Hospital Center, La Roche-sur-Yon, France. ⁶Medical-Surgical Intensive Care Unit, District Hospital Center, Angoulême, France. ⁷Medical-Surgical Intensive Care Unit, District Hospital Center, Saint-Malo, France. ⁸Medical-Surgical Intensive Care Unit, District Hospital Center,

Argenteuil, France. ⁹Medical Intensive Care Unit, University Hospital, Poitiers, France. ¹⁰Medical-Surgical Intensive Care Unit, District Hospital Center, Montauban, France. ¹¹Medical Intensive Care Unit, University Hospital, Dijon, France. ¹²INSERM, U866, Dijon, France. ¹³Clinical Research in Intensive Care and Sepsis (CRICS) Group, Tours, France.

Received: 31 May 2014 Accepted: 21 October 2014

Published online: 06 November 2014

References

1. Rady MY, Rivers EP, Nowak RM: Resuscitation of the critically ill in the ED: responses of blood pressure, heart rate, shock index, central venous oxygen saturation, and lactate. *Am J Emerg Med* 1996, **14**:218–225.
2. Dueck MH, Klimek M, Appenrodt S, Weigand C, Boerner U: Trends but not individual values of central venous oxygen saturation agree with mixed venous oxygen saturation during varying hemodynamic conditions. *Anesthesiology* 2005, **103**:249–257.
3. Rivers E, Nguyen B, Havstad S, Ressler J, Muzzin A, Knoblich B, Peterson E, Tomlanovich M, Early Goal-Directed Therapy Collaborative Group: Early Goal-Directed Therapy Collaborative Group: early goal directed therapy in the treatment of severe sepsis and septic shock. *N Engl J Med* 2001, **345**:1368–1377.
4. Dellinger RP, Levy MM, Rhodes A, Annane D, Gerlach H, Opal SM, Sevransky JE, Sprung CL, Douglas IS, Jaeschke R, Osborn TM, Nunnally ME, Townsend SR, Reinhart K, Kleinpell RM, Angus DC, Deutschman CS, Machado FR, Rubenfeld GD, Webb SA, Beale RJ, Vincent JL, Moreno R, Surviving Sepsis Campaign Guidelines Committee including the Pediatric Subgroup: Surviving Sepsis Campaign Guidelines Committee including the Pediatric Subgroup. Surviving sepsis campaign: international guidelines for management of severe sepsis and septic shock: 2012. *Crit Care Med* 2013, **41**:580–637.
5. Bellomo R, Reade MC, Warrillow SJ: The pursuit of a high central venous oxygen saturation in sepsis: growing concerns. *Crit Care* 2008, **12**:130.
6. Perel A: Bench-to-bedside review: the initial hemodynamic resuscitation of the septic patient according to Surviving Sepsis Campaign guidelines—does one size fit all? *Crit Care* 2008, **12**:223.
7. Peake S, Webb S, Delaney A: Early goal-directed therapy of septic shock: we honestly remain skeptical. *Crit Care Med* 2007, **35**:994–995.
8. van Beest PA, Hofstra JJ, Schultz MJ, Boerma EC, Spronk PE, Kuiper MA: The incidence of low venous oxygen saturation on admission to the intensive care unit: a multi-center observational study in The Netherlands. *Crit Care* 2008, **12**:R33.
9. Jansen TC, van Bommel J, Schoonderbeek FJ, Sleswijk Visser SJ, van der Klooster JM, Lima AP, Willemsen SP, Bakker J, LACTATE study group: Early lactate-guided therapy in intensive care unit patients: a multicenter, open-label, randomized controlled trial. *Am J Respir Crit Care Med* 2010, **182**:752–761.
10. Chung KP, Chang HT, Huang YT, Liao CH, Ho CC, Jerng JS, Yu CJ: Central venous oxygen saturation under non-protocolized resuscitation is not related to survival in severe sepsis or septic shock. *Shock* 2012, **38**:584–591.
11. Bracht H, Hänggi M, Jeker B, Wegmüller N, Porta F, Tüller D, Takala J, Jakob SM: Incidence of low central venous oxygen saturation during unplanned admissions in a multidisciplinary intensive care unit: an observational study. *Crit Care* 2007, **11**:R2.
12. Pope JV, Jones AE, Gaieski DF, Arnold RC, Trzeciak S, Shapiro NI, Emergency Medicine Shock Research Network (EMShockNet) Investigators: Multicenter study of central venous oxygen saturation (ScvO₂) as a predictor of mortality in patients with sepsis. *Ann Emerg Med* 2010, **55**:40–46.
13. Levy MM, Fink MP, Marshall JC, Abraham E, Angus D, Cook D, Cohen J, Opal SM, Vincent JL, Ramsay G, SCCM/ESICM/ACCP/ATS/SIS: 2001 SCCM/ESICM/ACCP/ATS/SIS International Sepsis Definitions Conference. *Crit Care Med* 2003, **31**:1250–1256.
14. McCabe WR, Jackson GG: Gram-negative bacteremia I. Etiology and ecology. *Arch Intern Med* 1962, **110**:847–891.
15. Akaike H: A new look at statistical model identification. *IEEE Trans Automat Contr* 1974, **19**:716–722.
16. Vincent JL, de Mendonça A, Cantraine F, Moreno R, Takala J, Suter PM, Sprung CL, Colardyn F, Blecher S: Use of the SOFA score to assess the incidence of organ dysfunction/failure in intensive care units: results of a multicenter, prospective study. Working group on “sepsis-related problems” of the European Society of Intensive Care Med. *Crit Care Med* 1998, **26**:1793–1800.
17. French government: Loi 2004-806 (August 9, 2004) relative à la politique de santé publique. *J French Repub* 2004, **185**:14277.
18. Antonelli M, Levy M, Andrews PJ, Chastre J, Hudson LD, Manthous C, Meduri GU, Moreno RP, Putensen C, Stewart T, Torres A: Hemodynamic monitoring in shock and implications for management. International Consensus Conference, Paris, France, 27-28 April 2006. *Intensive Care Med* 2007, **33**:575–590.
19. Pottecher T, Calvat S, Dupont H, Durand-Gasselin J, Gerbeaux P, SFAR/ SRLF workgroup: Hemodynamic management of severe sepsis: recommendations of the French Intensive Care Societies (SFAR/SRLF) Consensus Conference, 13 October 2005, Paris. *France Crit Care* 2006, **10**:311.
20. DerSimonian R, Laird N: Meta-analysis in clinical trials. *Control Clin Trials* 1986, **7**:177–188.
21. Cleveland WS, Devlin SJ: Locally-weighted regression: an approach to regression analysis by local fitting. *J Am Stat Assoc* 1988, **83**:596–610.
22. Boulain T, Runge I, Benzekri-Lefèvre D, Mathonnet A, Bretagnol A, Fleury C: Saturation veineuse cave supérieure (ScvO₂) à la prise en charge du sepsis sévère en réanimation : fréquence des valeurs basses [Abstract]. *Reanimation* 2011, **20**:S226.
23. R Core Team: *R: A Language and Environment for Statistical Computing*. Vienna, Austria: R Foundation for Statistical Computing; 2013. ISBN 3-900051-07-0 [http://www.R-project.org/]
24. Le Gall JR, Lemeshow S, Saulnier F: A new simplified acute physiology score (SAPS II) based on a European/north American multicenter study. *JAMA* 1993, **270**:2957–2963.
25. Nguyen HB, Rivers EP, Knoblich BP, Jacobsen G, Muzzin A, Ressler JA, Tomlanovich MC: Early lactate clearance is associated with improved outcome in severe sepsis and septic shock. *Crit Care Med* 2004, **32**:1637–1642.
26. Mikkelsen ME, Miltiades AN, Gaieski DF, Goyal M, Fuchs BD, Shah CV, Bellamy SL, Christie JD: Serum lactate is associated with mortality in severe sepsis independent of organ failure and shock. *Crit Care Med* 2009, **37**:1670–1677.
27. Marik PE, Bellomo R: Lactate clearance as a target of therapy in sepsis: a flawed paradigm. *OA Critical Care* 2013, **1**:3.
28. Jones AE, Shapiro NI, Trzeciak S, Arnold RC, Claremont HA, Kline JA, Emergency Medicine Shock Research Network (EMShockNet) Investigators: Lactate clearance vs central venous oxygen saturation as goals of early sepsis therapy: a randomized clinical trial. *JAMA* 2010, **303**:739–746.
29. Arnold RC, Shapiro NI, Jones AE, Schorr C, Pope J, Casner E, Parrillo JE, Dellinger RP, Trzeciak S, Emergency Medicine Shock Research Network (EMShockNet) Investigators: Multicenter study of early lactate clearance as a determinant of survival in patients with presumed sepsis. *Shock* 2009, **32**:35–39.
30. Investigators PCESS, Yealy DM, Kellum JA, Huang DT, Barnato AE, Weissfeld LA, Pike F, Terndrup T, Wang HE, Hou PC, LoVecchio F, Filbin MR, Shapiro NI, Angus DC: A randomized trial of protocol-based care for early septic shock. *N Engl J Med* 2014, **370**:1683–1693.
31. Gattinoni L, Brazzi L, Pelosi P, Latini R, Tognoni G, Pesenti A, Fumagalli R: A trial of goal-oriented hemodynamic therapy in critically ill patients. SvO₂ Collaborative Group. *N Engl J Med* 1995, **333**:1025–1032.
32. van Beest P, Wietasch G, Scheeren T, Spronk P, Kuiper M: Clinical review: use of venous oxygen saturations as a goal - a yet unfinished puzzle. *Crit Care* 2011, **15**:232.
33. Gallet R, Lellouche N, Mitchell-Heggs L, Bouhemad B, Bensaid A, Dubois-Randé JL, Gueret P, Lim P: Prognosis value of central venous oxygen saturation in acute decompensated heart failure. *Arch Cardiovasc Dis* 2012, **105**:5–12.
34. Astiz ME, Rackow EC, Falk JL, Kaufman BS, Weil MH: Oxygen delivery and consumption in patients with hyperdynamic septic shock. *Crit Care Med* 1987, **15**:26–28.
35. Kalliokoski KK, Oikonen V, Takala TO, Sipilä H, Knuuti J, Nuutila P: Enhanced oxygen extraction and reduced flow heterogeneity in exercising muscle in endurance-trained men. *Am J Physiol Endocrinol Metab* 2001, **280**:E1015–E1021.
36. Ellis CG, Bateman RM, Sharpe MD, Sibbald WJ, Gill R: Effect of a maldistribution of microvascular blood flow on capillary O₂ extraction in sepsis. *Am J Physiol Heart Circ Physiol* 2002, **282**:H156–H164.
37. Textoris J, Fouché L, Wiramus S, Antonini F, Tho S, Martin C, Leone M: High central venous oxygen saturation in the latter stages of septic shock is associated with increased mortality. *Crit Care* 2011, **15**:R176.

38. Ho BC, Bellomo R, McGain F, Ones D, Naka T, Wan L, Braitberg G: **The incidence and outcome of septic shock patients in the absence of early-goal directed therapy.** *Crit Care* 2006, **10**:R80.
39. Subramanian G, Anitha VP, Ranjit S: **Comparison of central venous saturation by standard ABG machine versus co-oximeter: Is 18 carat as good as the 24 carat gold standard?** *Indian J Crit Care Med* 2013, **17**:82–86.

doi:10.1186/s13054-014-0609-7

Cite this article as: Boulain *et al.*: Prevalence of low central venous oxygen saturation in the first hours of intensive care unit admission and associated mortality in septic shock patients: a prospective multicentre study. *Critical Care* 2014 **18**:609.

Submit your next manuscript to BioMed Central and take full advantage of:

- Convenient online submission
- Thorough peer review
- No space constraints or color figure charges
- Immediate publication on acceptance
- Inclusion in PubMed, CAS, Scopus and Google Scholar
- Research which is freely available for redistribution

Submit your manuscript at
www.biomedcentral.com/submit

