

RESEARCH ARTICLE

Open Access

# Prevalence of *PALB2* mutations in Australasian multiple-case breast cancer families

Zhi L Teo<sup>1</sup>, Daniel J Park<sup>1</sup>, Elena Provenzano<sup>2</sup>, Catherine A Chatfield<sup>1</sup>, Fabrice A Odefrey<sup>1</sup>, Tu Nguyen-Dumont<sup>1</sup>, kConFab<sup>3</sup>, James G Dowty<sup>4</sup>, John L Hopper<sup>4</sup>, Ingrid Winship<sup>5</sup>, David E Goldgar<sup>6</sup> and Melissa C Southey<sup>1\*</sup>

## Abstract

**Introduction:** Population-based studies of breast cancer have estimated that some *PALB2* mutations confer a breast cancer risk (penetrance) comparable to the average pathogenic mutation in *BRCA2*. As this risk is of clinical relevance, we sought to identify mono-allelic *PALB2* mutations and determine their frequencies in multiple-case breast cancer families attending Familial Cancer Clinics in Australia and New Zealand.

**Methods:** The youngest affected woman, not known to carry a mutation in *BRCA1* or *BRCA2*, from 747 multiple-case breast cancer families participating in kConFab were selected for *PALB2* mutation screening. The coding and flanking intronic regions of *PALB2* in DNA extracted from blood were screened using high-resolution melt curve analysis with Sanger sequencing confirmation. Where possible, relatives of women found to carry *PALB2* mutations were genotyped for the family-specific mutation, mutant transcripts were characterised and breast tumours arising in mutation carriers were recalled and reviewed. Missense mutations were assessed for potential to disrupt protein function via SIFT, Align GVGD and Polyphen-2.

**Results:** The mutation screen identified two nonsense mutations (*PALB2* c.3113G>A in eight women and *PALB2* c.196C>T in one woman), two frameshift mutations (*PALB2* c.1947\_1948insA and *PALB2* c.2982\_2983insT each in one woman), 10 missense variants, eight synonymous variants and four variants in intronic regions. Of the four *PALB2* mutations identified that were predicted to produce truncated protein products, only *PALB2* c.1947\_1948insA had not previously been reported. *PALB2* c.3113G>A and *PALB2* c.196C>T were previously identified in the Australian population whereas *PALB2* c.2982\_2983insT was previously reported in the UK population. Transcripts derived from three of these mutant *PALB2* alleles were vulnerable to nonsense-mediated decay. One missense mutation (*PALB2* c.2993G>A) was predicted to disrupt protein function via the three *in silico* assessment methods applied. The majority of breast cancers arising in carriers that were available for review were high-grade invasive ductal carcinomas. **Conclusions:** About 1.5% (95% CI 0.6 to 2.4) of Australasian multiple-case breast cancer families attending clinics are segregating protein-truncating mutations in *PALB2*, most being *PALB2* c.3113G>A, p.Trp1038\*. Given the prevalence, breast cancer risk, and tumour grade associated with this mutation, consideration of clinical *PALB2* testing is warranted.

## Introduction

Genetic testing for mutations in breast cancer susceptibility genes offers some women and their families the opportunity for risk-reducing intervention, medical risk reduction and gene-targeted therapeutics [1,2]. Testing in Australia and New Zealand is usually limited to *BRCA1* (MIM#113705), *BRCA2* (MIM#600185) mutations

and possibly those of *STK11* (MIM#602216), *PTEN* (MIM#601728) and *TP53* (MIM#191170) if relevant clinical syndromic indications are observed. However, due to the rarity of these mutations in known breast cancer susceptibility genes and the fact that they account for less than 30% of the familial breast cancer risk [3], the majority of individuals at high risk of breast cancer do not carry these mutations and the families are clinically managed solely on the assessment of their cancer family history [4].

The search for additional breast cancer susceptibility genes has been of great interest and has successfully led

\* Correspondence: msouthey@unimelb.edu.au

<sup>1</sup>Genetic Epidemiology Laboratory, The University of Melbourne, Grattan Street, Melbourne, Victoria 3010, Australia  
Full list of author information is available at the end of the article

to the identification and characterisation of *ATM* (MIM#607585) [5], *BRIP1* (MIM#605882) [6], *CHEK2* (MIM#604373) [7], and *PALB2* (MIM#610355) [8]. Mutations in these genes are rare and early reports suggested that, on average, they are associated with moderate risks of breast cancer (lower than the high breast cancer risks associated with *BRCA1* and *BRCA2* mutations) [5,6,8,9]. However, large population-based studies of breast cancer have demonstrated that at least some mutations in these genes are associated with breast cancer risks that are comparable to the average risk associated with *BRCA2* mutations [5,9-13].

*PALB2*, partner and localiser of *BRCA2*, is a *BRCA1*- and *BRCA2*-interacting protein critical for the homologous recombination-based repair of DNA double-strand breaks and checkpoint control functions [14-16]. Bi-allelic mutations in *PALB2* explain an unrecognised Fanconi anemia complementation group, designated subtype N (FANCN), and have been found to convey high risk of childhood cancer [17,18]. Heterozygous germline loss-of-function mutations in *PALB2* are associated with increased risk of breast cancer. The first *PALB2* association study, which involved familial breast cancer cases and unaffected controls from the UK population, reported that the average estimated risk conferred by five *PALB2* mutations is 2.3 (95% CI 1.4 to 3.9) [8] but subsequent population-based studies have estimated the risk associated with at least some *PALB2* mutations to be much higher [12,13]. For example, *PALB2* c.1592delT was identified in 18/1,918 (0.9%) Finnish breast cancer cases, unselected for family history, compared to 6/2,501 (0.2%) in controls (OR 3.94; 95% CI 1.5 to 12.1). Based on families of the 10 affected carriers, *PALB2* c.1592delT was estimated to be associated with a 40% (95%CI 17 to 77) risk to age 70 [12]. Similarly, *PALB2* c.3113G>A was identified in 5/1,403 (0.4%) unselected breast cancer cases and 0/764 (0%) unaffected controls in the Australian population. The cumulative risk estimated for *PALB2* c.3113G>A, using the families of the five carrier cases, was 91% (95% CI 44 to 100) to age 70 [13]. These risks are comparable to the average breast cancer risk associated with carrying a *BRCA2* mutation with penetrance to age 70 of 45% (95%CI 31 to 56) [9].

In this study, we screened for germline *PALB2* mutations in a sample of 747 women affected with breast cancer (known not to carry a mutation in *BRCA1* or *BRCA2*) from multiple-case breast cancer families participating in the Kathleen Cuninghame Foundation Consortium for Research in Familial Breast Cancer (kConFab). This sample represents women and their families who attend Familial Cancer Clinics throughout Australia and New Zealand. We sought to ascertain the prevalence of *PALB2* mutations in these women due to the high estimated breast cancer risk associated with at

least some *PALB2* mutations and to further consider if clinical testing for these mutations is warranted.

## Materials and methods

### Participants

Women and their families participating in the kConFab resource [19] were selected for this study. The youngest affected female members (designated the proband) of a multiple-case breast cancer family who had provided blood samples (for DNA preparation) and who were known not to carry a mutation in *BRCA1* or *BRCA2* were included. These participants would have undergone a variety of mutation testing strategies in research and diagnostic settings including Sanger sequencing through Myriad Genetics (Salt Lake City, UT, USA) [19,20]. The eligibility criteria for recruitment of families into kConFab was intended to maximise the number of living potentially high-risk individuals, including carriers of high-penetrance alleles, regardless of breast cancer status. The reports of cancer in the families were verified through medical records or by state-based cancer registries. Where possible, a copy of the final pathology report was obtained with the locations of archival and diagnostic tumour specimens for future requests of paraffin blocks and slides. A pathologist (EP) conducted pathology reviews of the available tumour material, which provided the information on tumour pathology presented in this paper. Histological grade was scored based on the Bloom-Richardson grading system modified by Elston and Ellis [21].

Data on estrogen receptor (ER), progesterone receptor (PR) and human epidermal growth factor-2 (HER2) status of the *PALB2* mutation-associated tumours were collected, if available, from diagnostic laboratories and pathology reports. HER2 status was classified in accordance with clinical guidelines [22] and was considered to be positive if immunohistochemical test results were ranked 3+ (higher than normal amount of HER2 protein was present) or if HER2 gene amplification was demonstrated using fluorescence *in situ* hybridisation. An immunohistochemical test result of 1+ (normal amount of HER2 protein was present) was classified as negative for HER2 expression while an immunohistochemical test result of 2+ (moderate amount of HER2 protein was present) without a confirmatory fluorescence *in situ* hybridisation test was classified as equivocal.

All participants provided written informed consent for participation in the study. This study was approved by The University of Melbourne Human Research Ethics Committee.

### High-resolution melt curve analysis and Sanger sequencing analysis of *PALB2* coding variants

High-resolution melt (HRM) and Sanger sequencing were performed as previously described in Southey *et al.*

(2010) [13]. The coding sequences and the flanking intronic sequences of *PALB2* [Q86YC2.1] were screened for genetic variants by HRM curve analysis and the variants were confirmed via Sanger sequencing. Genotyping of relatives of the probands found to carry *PALB2* mutations was carried out via Sanger sequencing.

#### ***In silico analysis***

The *in silico* analyses of *PALB2* variants were performed using Sorting Intolerant From Tolerant (SIFT) (J. Craig Venter Institute, Maryland, CA, USA) [23-25], Align Grantham Variation Grantham Deviation (Align GVGD) (International Agency for Research on Cancer, Lyon, France) [26-29] and Polymorphism Phenotyping version 2 (Polyphen-2) [30,31], which are freely available web-based programs. Protein multiple sequence alignment (PMSA) of *PALB2* was made available through a recent publication [32] and was used in SIFT and Align GVGD.

SIFT calculates the probability that an amino acid at a position is tolerated conditional on the most frequent amino acid being tolerated by interrogating the amino acids appearing at each position in the alignment. If the normalised probability is less than the cutoff score of 0.05, the substitution is predicted to be deleterious [25].

The outputs of Align GVGD are combined to provide a seven-tiered genetic risk classifier: C0, C15, C25, C35, C45, C55, and C65 where C0 describes the category of variants least likely to be deleterious and C65 describes the category of variants most likely to be deleterious [28,29].

The HumDiv-trained data set of Polyphen-2 [31] was used for this research. The investigated mutation is categorised as probably damaging (probability score more than 0.85), possibly damaging (probability score between 0.16 and 0.85) or benign (probability score less than or equal to 0.15).

#### ***Reverse transcription PCR***

Epstein-Barr virus (EBV)-transformed lymphoblastoid cell lines (LCL) were cultured and prepared for RNA extraction as described by Southey *et al.* (2003) [33]. LCLs were divided into two equal portions for treatment with 100 mg/ml of cycloheximide to stabilise the transcripts for analysis [34] or no treatment. Both portions were then incubated for four hours at 37°C. Total RNA was isolated from the LCLs using the RNAqueous-4PCR kit (Ambion/Life Technologies, Carlsbad, CA, USA). Deoxyribonuclease 1 (Ambion/Life Technologies) was added to all extracted total RNA prior to their use in reverse transcription (RT) to remove any genomic DNA that could have been eluted with the RNA during the extraction process.

Primers for RT-PCR were designed using the default conditions on the Primer3 software (Whitehead Institute

and Howard Hughes Medical Institute). The primers were also designed to ensure the 3' end of both the forward and reverse primers ended with a 'GC clamp' (one G or C base). To further guard against the amplification of genomic DNA, all primers except one (due to restrictions in length) were designed to span exon-exon boundaries. A *PALB2* gene-specific primer (GSP) was used for cDNA synthesis via RT for all cell lines (Additional file 1). Primers were ordered from Geneworks (Hindmarsh, South Australia, Australia).

cDNA was synthesised via RT according to the specifications of the Thermoscript RT-PCR system kit (Life Technologies) using 800 ng of total RNA and the *PALB2* GSP. RT was performed at 55°C for 50 mins followed by addition of RNase H and incubation for 20 mins at 37°C. Two µl of synthesised cDNA product was subsequently amplified using two units of Amplitaq Gold DNA Polymerase (Life Technologies) in the presence of 1x PCR Buffer II (Life Technologies), 1.5 mM MgCl<sub>2</sub> (Life Technologies), 0.2 mM dNTP (Ambion/Life Technologies), 0.2 µM each of forward and reverse primers in a 50 µl reaction volume. PCR was performed using the PCR conditions suggested by the Thermoscript RT-PCR system kit (Life Technologies). PCR annealing temperature was chosen to be 51°C. No RT controls (extracted total RNA added in place of cDNA during RT-PCR) were added to control for contamination from genomic DNA. Platinum Supermix High Fidelity (Life Technologies) was used to limit the extent to which longer PCR products, resulting from the inclusion of intronic sequences, were not under-represented. RT-PCR was carried out in triplicate for each condition for each LCL. Multiple LCLs (derived from different study participants) carrying each of the mutations was included in the assays whenever possible and one 'non-carrier' LCL was included as an additional control.

RT-PCR products were separated using agarose gel electrophoresis on 2%, 3% or 4% agarose gels. Bands were excised from the gel and purified using the QIAquick Gel Extraction Kit (Qiagen, Hilden, Germany) according to the manufacturer's instructions prior to Sanger sequencing analysis.

The relative amounts of DNA product amplified in each RT-PCR reaction were measured by comparing the chromatogram peak heights (fluorescence signal intensities; FSI) of the variant nucleotides of the mutant alleles to the corresponding wild-type nucleotides of the wild-type alleles. After Sanger sequencing, Sequencing Analysis Software (Life Technologies) provides FSIs of each nucleotide of the target amplicon. FSIs of the variant and wild-type nucleotides at the heterozygous *PALB2* c.196C>T position were recorded. FSIs of three wild-type nucleotides and their corresponding variant nucleotides in regions of frameshift resulting from *PALB2* c.1947\_1948insA or

*PALB2* c.2982\_2983insT were recorded for each condition (cycloheximide treated or non-cycloheximide treated). FSI of six wild-type nucleotides and their corresponding six variant nucleotides in regions of frameshift resulting from *PALB2* c.3113G>A were recorded for each treatment condition. The same three or six nucleotides in the regions of frameshift were interrogated for each mutant transcript in the same sequencing direction. A proportion of the FSI of the variant nucleotide to that of the corresponding wild-type nucleotide was obtained. In the situations where three or six nucleotides were interrogated per treatment condition, the FSI proportions of the three or six nucleotides were averaged within a treatment condition. The FSI proportions of the technical replicates of each treatment condition were averaged. The difference in the mean FSI proportions in the cycloheximide-treated and non-cycloheximide-treated conditions indicated the semi-quantitative change in relative gene expression levels of the mutant transcripts in each treatment condition.

## Results

### *PALB2* mutation screening

HRM screening of the *PALB2* coding and flanking intronic regions in the selected sample of 747 DNAs identified 26 different *PALB2* genetic variants. Of the 22 exonic variants, two were nonsense mutations resulting in predicted stop codons (*PALB2* c.196C>T, p.Gln66\*; *PALB2* c.3113G>A, p.Trp1038\*), two were frameshift mutations resulting in premature termination codons (PTC; *PALB2* c.1947\_1948insA, p.Glu650fs\*13; *PALB2* c.2982\_2983insT, p.Ala995fs\*16), 10 were missense variants, and the remaining eight were synonymous variants. Four variants were identified in the intronic region of *PALB2*, three of these were single-base changes and one was an insertion of three bases towards the 5' end of intron 4. 10 of the 26 variants had not been previously reported (Table 1).

The four nonsense and frameshift *PALB2* mutations were observed in 11 (1.5%) of the 747 probands. Eight probands (0.9%) were found to carry *PALB2* c.3113G>A while *PALB2* c.196C>T, *PALB2* c.1947\_1948insA and *PALB2* c.2982\_2983insT were each carried by a single proband. *PALB2* c.1947\_1948insA has not been previously reported in published literature or in the National Centre for Biotechnology Information (NCBI [35]) or the e!Ensembl [36] genome databases. *PALB2* c.2982\_2983insT had not been previously reported in the Australian or New Zealand population.

### *In silico* analysis

The 10 exonic missense variants were analysed for their predicted effect on protein function using SIFT [23-25], Align GVGD [26,37], and Polyphen-2 [30,31] programs. *PALB2* c.2993G>A, p.Gly998Glu was the only *PALB2*

variant predicted to be deleterious to protein function by all three programs (Table 2).

### Transcript analysis

Figure 1 shows the outcome of the RT-PCR assays and the semi-qualitative analysis of nonsense-mediated decay (NMD) observed for the four *PALB2* nonsense and insertion mutations identified in this study. The results of each mutation are discussed in the following sections.

### *PALB2* c.3113G>A

*PALB2* c.3113G>A is a nonsense mutation located at the last nucleotide of exon 10. Two alternate transcripts were observed in the RT-PCR assays. One alternate transcript involved the deletion of exon 10 (117bp; *PALB2* r.2997\_3113del, p.Gly1000\_Gly1038del), and the other included a 31bp deletion in exon 10 (*PALB2* r.3083\_3113del, p.Gly1028fs\*3) that resulted in a shift of reading frame and a premature termination codon (PTC) (at codon 1030). These two transcripts were also observed to travel in the agarose gel as heteroduplexes with the wild-type allele (Figure 1a, agarose gel bands A and B). Cycloheximide treatment of LCLs carrying this mutation demonstrated that *PALB2* r.2997\_3113del does not undergo extensive NMD whereas *PALB2* r.3083\_3113del appears to be susceptible to NMD (Figure 1a).

### *PALB2* c.196C>T

*PALB2* c.196C>T is a nonsense mutation predicted to produce a truncated protein (p.Gln66\*). Figure 1b shows that no alternate transcripts resulted from this mutation and that the cycloheximide treatment of all LCLs (both wild-type and those carrying *PALB2* c.196C>T) had considerable impact on transcript stabilization compared to the untreated LCLs as visualised on the agarose gel. Comparison of the FSI of the mutant and wild-type alleles derived from Sanger sequencing of the RT-PCR products (semi-quantitative analysis) suggests that the wild-type transcript might be more sensitive to cycloheximide treatment than the mutant allele. Taken together, the data suggest that *PALB2* c.196C>T is not vulnerable to NMD.

### *PALB2* c.1947\_1948insA and *PALB2* c.2982\_2983insT

Both *PALB2* c.1947\_1948insA and *PALB2* c.2982\_2983insT are frameshift mutations predicted to produce a PTC each (p.Glu650fs\*13 and p.Ala995fs\*16, respectively) and are not located in splice-site consensus sites. The relative levels of expression of the *PALB2* c.1947\_1948insA and *PALB2* c.2982\_2983insT mutant alleles in the non-cycloheximide-treated LCLs were 56% less and 63% less,

**Table 1 PALB2 variants identified in female participants of the kConFab resource.**

|                   | Nucleotide change  | Protein change | rs number   | Frequency (n = 747) | %   | References                                                                                                                                                                       |
|-------------------|--------------------|----------------|-------------|---------------------|-----|----------------------------------------------------------------------------------------------------------------------------------------------------------------------------------|
| Exonic variants   |                    |                |             |                     |     |                                                                                                                                                                                  |
| Nonsense          | c.196C>T           | p. Gln66*      | rs180177083 | 1                   | 0.1 | Casadei <i>et al.</i> [38]; Wong <i>et al.</i> [39]                                                                                                                              |
|                   | c.3113G>A          | p.Trp1038*     | rs180177132 | 7                   | 0.9 | Rahman <i>et al.</i> [8]; Casadei <i>et al.</i> [38]; Wong <i>et al.</i> [39]                                                                                                    |
| Frameshift        | c.1947_1948insA    | p. Glu650fs*13 | -           | 1                   | 0.1 | -                                                                                                                                                                                |
|                   | c.2982_2983insT    | p. Ala995fs*16 | rs180177127 | 1                   | 0.1 | Rahman <i>et al.</i> [8]; Bogdanova <i>et al.</i> [70]                                                                                                                           |
| Missense          | c.90G>T            | p.Lys30Asn     | -           | 1                   | 0.1 | -                                                                                                                                                                                |
|                   | c.94C>G            | p.Leu32Val     | rs151316635 | 1                   | 0.1 | -                                                                                                                                                                                |
|                   | c.596A>G           | p.Asp219Gly    | rs45594034  | 1                   | 0.1 | Rahman <i>et al.</i> [8]; Hellebrand <i>et al.</i> [40]; Dansonka-Mieskowska <i>et al.</i> [61]                                                                                  |
|                   | c.956C>A           | p.Ser319Tyr    | -           | 1                   | 0.1 | -                                                                                                                                                                                |
|                   | c.1010T>C          | p.Leu337Ser    | rs45494092  | 25                  | 3.3 | Rahman <i>et al.</i> [8]; Hellebrand <i>et al.</i> [40];                                                                                                                         |
|                   | c.1475G>T          | p.Gly492Val    | -           | 1                   | 0.1 | -                                                                                                                                                                                |
|                   | c.1676A>G          | p.Gln559Arg    | rs152451    | 72                  | 9.6 | Rahman <i>et al.</i> [8]; Hellebrand <i>et al.</i> [40]; Garcia <i>et al.</i> [63]; Bogdanova <i>et al.</i> [70]                                                                 |
|                   | c.2014G>C          | p.Glu672Gln    | rs45532440  | 51                  | 6.8 | Rahman <i>et al.</i> [8]; Hellebrand <i>et al.</i> [40]; Garcia <i>et al.</i> [63]; Bogdanova <i>et al.</i> [70]; Dansonka-Mieskowska <i>et al.</i> [61]                         |
|                   | c.2590C>T          | p.Pro864Ser    | rs45568339  | 1                   | 0.1 | Rahman <i>et al.</i> [8]; Hellebrand <i>et al.</i> [40]; Garcia <i>et al.</i> [63];                                                                                              |
|                   | c.2993G>A          | p.Gly998glu    | rs45551636  | 17                  | 2.3 | Rahman <i>et al.</i> [8]; Hellebrand <i>et al.</i> [40]; Garcia <i>et al.</i> [63]; Bogdanova <i>et al.</i> [70]                                                                 |
| Synonymous        | c.1431C>T          | p.Thr477Thr    | -           | 1                   | 0.1 | -                                                                                                                                                                                |
|                   | c.1470C>T          | p.Pro490Pro    | rs45612837  | 1                   | 0.1 | Rahman <i>et al.</i> [8]; Bogdanova <i>et al.</i> [70]                                                                                                                           |
|                   | c.1572A>G          | p.Ser524Ser    | rs45472400  | 4                   | 0.5 | Rahman <i>et al.</i> [8]; Hellebrand <i>et al.</i> [40]; Garcia <i>et al.</i> [63]; Bogdanova <i>et al.</i> [70]                                                                 |
|                   | c.1935G>A          | p.Glu645Glu    | rs141707455 | 1                   | 0.1 | Hellebrand <i>et al.</i> [40];                                                                                                                                                   |
|                   | c.2469C>A          | p.Leu823Leu    | -           | 1                   | 0.1 | -                                                                                                                                                                                |
|                   | c.2823C>A          | p.Ile941Ile    | -           | 1                   | 0.1 | -                                                                                                                                                                                |
|                   | c.3300T>G          | p.Thr1100Thr   | rs45516100  | 45                  | 6   | Rahman <i>et al.</i> [8]; Hellebrand <i>et al.</i> [40]; Erko <i>et al.</i> [71]; Garcia <i>et al.</i> [63]; Bogdanova <i>et al.</i> [70] Dansonka-Mieskowska <i>et al.</i> [61] |
|                   | c.3321G>A          | p.Leu1107Leu   | -           | 1                   | 0.1 | -                                                                                                                                                                                |
| Intronic variants |                    |                |             |                     |     |                                                                                                                                                                                  |
|                   | c.-47G>A           | -              | rs8053188   | 17                  | 2.3 | Hellebrand <i>et al.</i> [40]; Garcia <i>et al.</i> [63];                                                                                                                        |
|                   | c.212-58A>C        | -              | rs80291632  | 37                  | 5   | Garcia <i>et al.</i> [63]; Dansonka-Mieskowska <i>et al.</i> [61]                                                                                                                |
|                   | c.1684+41_42insTGA | -              | -           | 2                   | 0.3 | -                                                                                                                                                                                |
|                   | c.2834+12C>T       | -              | -           | 1                   | 0.1 | -                                                                                                                                                                                |

**Table 2 Predicting the effects of *PALB2* missense variants on protein function using three *in silico* methods.**

| Nucleotide change               | Protein change     | Carrier frequency (%) | SIFT <sup>a</sup>                               | Align GVGD <sup>b</sup> | Polyphen <sup>c</sup>          |
|---------------------------------|--------------------|-----------------------|-------------------------------------------------|-------------------------|--------------------------------|
| c.90G>T                         | p.Lys30Asn         | 1 (0.1)               | Affect protein function; <i>P</i> = 0.04        | Class C0                | Probably damaging 0.999        |
| c.94C>G                         | p.Leu32Val         | 1 (0.1)               | Tolerated; <i>P</i> = 0.37                      | Class C0                | Probably damaging 1.000        |
| c.596A>G                        | p.Asp219Gly        | 1 (0.1)               | Tolerated; <i>P</i> = 0.65                      | Class C0                | Benign 0.000                   |
| c.956C>A                        | p.Ser319Tyr        | 1 (0.1)               | Tolerated; <i>P</i> = 0.91                      | Class C0                | Possibly damaging 0.589        |
| c.1010T>C                       | p.Leu337Ser        | 25 (3.3)              | Tolerated; <i>P</i> = 0.59                      | Class C0                | Benign 0.291                   |
| c.1475G>T                       | p.Gly492Val        | 1 (0.1)               | Tolerated; <i>P</i> = 0.17                      | Class C0                | Benign 0.161                   |
| c.1676A>G                       | p.Gln559Arg        | 72 (9.6)              | Tolerated; <i>P</i> = 0.57                      | Class C0                | Benign 0.000                   |
| c.2014G>C                       | p.Glu672Gln        | 51 (6.8)              | Tolerated; <i>P</i> = 0.48                      | Class C0                | Benign 0.225                   |
| c.2590C>T                       | p.Pro864Ser        | 1 (0.1)               | Tolerated; <i>P</i> = 0.68                      | Class C0                | Possibly damaging 0.578        |
| <b>c.2993G&gt;A<sup>*</sup></b> | <b>p.Gly998Glu</b> | <b>17 (0.9)</b>       | <b>Affect protein function; <i>p</i> = 0.00</b> | <b>Class C65</b>        | <b>Probably damaging 1.000</b> |

<sup>a</sup>Predicted to affect protein function by all three programs. <sup>a</sup>Kumar *et al.*(2009) [24]; Ng *et al.* (2003) [25]. <sup>b</sup>Tavtigian *et al.* (2006) [27]; Mathe *et al.* (2006) [28]; Tavtigian *et al.* (2008) [29]. <sup>c</sup>Adzhubei *et al.* (2010) [31].

respectively, than the corresponding mutant allele in the cycloheximide-treated LCLs. This suggests that transcripts arising from both these mutant alleles are subjected to NMD (Figure 1c and 1d). RT-PCR comparison of the mutant and wild-type transcripts (data not shown) indicated that neither of these *PALB2* mutations resulted in alternate transcripts.

#### Family histories and tumour characteristics

The relatives of women who were identified as carriers of *PALB2* c.3113G>A, *PALB2* c.196C>T, *PALB2* c.1947\_1948insA, and *PALB2* c.2982\_2983insT, were genotyped for the respective family mutations. Several more carriers were identified (Table 3).

*PALB2* c.3113G>A was identified in eight probands. The median age at diagnosis (not including second primary diagnosis of breast cancer) of these probands was 48.5 years (range: 32 to 79 years). Tumour material was not available for the proband of pedigree A (Table 3a). The other seven probands were of histological grade two or three. Five of seven probands were found to have invasive ductal carcinoma as the primary histological type. One of seven probands had tubular carcinoma and the remaining proband had lobular carcinoma. The ER, PR and HER2 status of the tumours of two of these probands were available, one was ER+/PR+/HER2+ and one was ER+/PR+/HER2- (Table 3a). The families of the eight probands had at least one additional breast cancer diagnoses. Four families had six diagnoses of breast cancer. Three families were affected with several other types of cancers (Table 3a).

The proband who was found to carry *PALB2* c.196C>T had a histological grade three, invasive ductal carcinoma diagnosed at the age of 43 years. The tumour was found to be positive for ER and PR expression but the HER2 expression status was unknown. The family had nine diagnoses of breast cancer and was also affected with six other types of cancers (Table 3b).

The proband that was identified as a carrier of *PALB2* c.1947\_1948insA had a histological grade two, pleomorphic lobular carcinoma (ER+/PR+/HER2+) diagnosed at age 42 years. There were nine additional diagnoses of breast cancers in the family and seven other types of cancers were also reported (Table 3c).

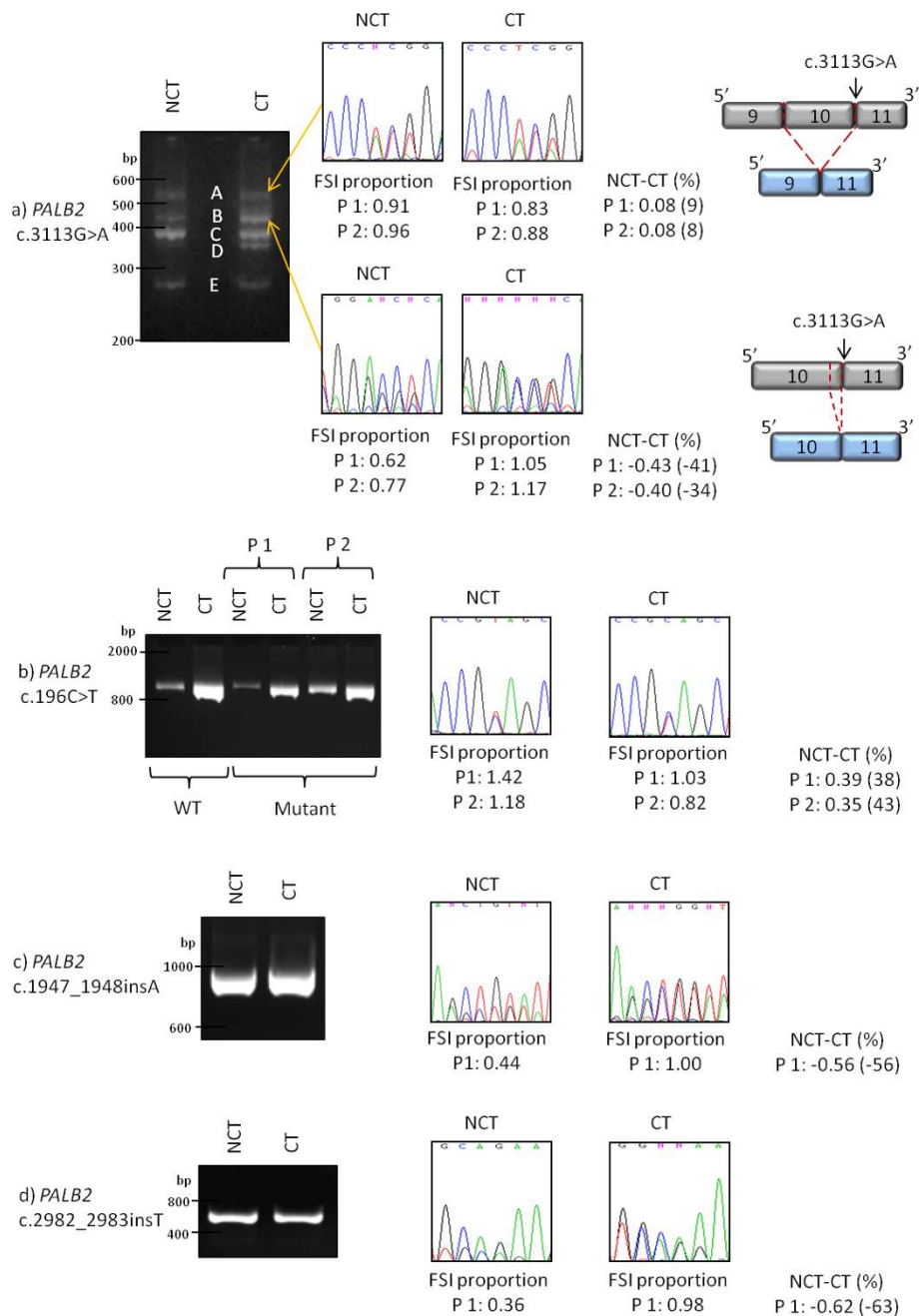
The proband that carried *PALB2* c.2982\_2983insT had a histological grade three, invasive ductal carcinoma diagnosed at age 45 years (Table 3d). Information on ER, PR and HER2 expression was not available for this individual. The family reported five breast cancers in three individuals. Other cancers in the family included sarcoma, pancreatic cancer and lymphoma.

Where possible, tumour material was also collected for some family members affected with breast cancer. In summary, *PALB2*-associated tumours are mostly high histological grade invasive ductal carcinoma (11/15; 73%). A total of 2/15 (13%) were pleomorphic lobular carcinomas, 1/15 (7%) was a lobular (classical) carcinoma and 1/15 (7%) was a tubular carcinoma.

#### Discussion

High throughput screening of the *PALB2* coding and flanking intronic regions in 747 affected women from multiple-case breast cancer families identified 26 different *PALB2* genetic variants.

The four mutations that were predicted to produce truncated protein product were identified in a total of 11 (1.5%) of the 747 women screened. Eight of these women were found to carry *PALB2* c.3113G>A that has previously been identified in British, Australian and American women affected with breast cancer [8,13,38,39] and is associated with an estimated 91% (95% CI 44 to 100) cumulative risk of breast cancer to age 70. We report this and the carrier frequency of *PALB2* c.3113G>A in the kConFab resource in Southey *et al.*, (2010) [13]. *PALB2* c.2982\_2983insT has previously been identified in one of



**Figure 1 Characterisation of PALB2 mutation transcripts via RT-PCR. (a)** Image of transcripts from *PALB2* c.3113G>A visualised on 3% agarose gel. **(A)** Heteroduplex of the RT-PCR products of the wild-type and the *PALB2* r.2997\_3113del transcripts. **(B)** Heteroduplex of the RT-PCR products of the wild-type and *PALB2* r.3083\_3113del transcripts. **(C)** RT-PCR product of the wild-type transcript. **(D)** RT-PCR product of the *PALB2* r.3083\_3113del transcript. **(E)** RT-PCR product of the *PALB2* r.2997\_3113del transcript. FSIs of six wild-type and their corresponding six variant nucleotides at heterozygous positions were recorded for each condition (CT and NCT). Averaged proportions of FSI of the six variant nucleotides to the FSI of the six corresponding wild-type nucleotides for each condition are shown. **(b)** Image of wild-type transcripts and transcripts from *PALB2* c.196C>T visualised on 4% agarose gel. FSIs were recorded for the variant and corresponding wild-type nucleotide at the heterozygous position. **(c)** Image of transcripts resulting from *PALB2* c.1947\_1948insA visualised on 2% agarose gel. FSIs were recorded for three variant nucleotides and their corresponding wild-type nucleotides at the heterozygous positions. **(d)** Image of transcripts from *PALB2* c.2982\_2983insT visualised on 2% agarose gel. FSIs were recorded for three variant nucleotides and their corresponding wild-type nucleotides at the heterozygous positions. NCT-CT: the difference in FSI proportions in the CT and NCT conditions indicates the semi-quantitative change in relative gene expression levels of the mutant transcripts in each condition. CT, cycloheximide treated; FSI, fluorescence signal intensity; NCT, non-cycloheximide treated; NT, nucleotide; WT, wild-type.

**Table 3 Family cancer histories of probands, carriers of *PALB2* mutations, and the histopathology features of *PALB2*-associated tumours.**

| Mutation                        | Pedigree   | Breast cancer diagnoses | Grade | Histological type (1°) | ER          | PR  | HER2 |     |
|---------------------------------|------------|-------------------------|-------|------------------------|-------------|-----|------|-----|
| a) <i>PALB2</i> c.3113G>A       | A          | Proband +               |       |                        |             |     |      |     |
|                                 |            | P.FCOR +                |       |                        |             |     |      |     |
|                                 |            | P.cousin -              |       |                        |             |     |      |     |
|                                 |            | P.aunt                  |       |                        |             |     |      |     |
|                                 | B          | Proband +               |       | 3                      | IDC         | pos | neg  | Eqv |
|                                 |            | P.aunt                  |       |                        |             |     |      |     |
|                                 |            | P.cousin -              |       |                        |             |     |      |     |
|                                 |            | P.cousin                |       |                        |             |     |      |     |
|                                 |            | P.g.mother              |       |                        |             |     |      |     |
|                                 | C          | Proband +               |       | 1                      | Tubular     | pos | pos  | neg |
|                                 |            | Sister +                |       | 3                      | IDC         | pos | neg  |     |
|                                 |            | P.aunt                  |       |                        |             |     |      |     |
|                                 |            | M.aunt                  |       |                        |             |     |      |     |
|                                 |            | M.cousin                |       |                        |             |     |      |     |
|                                 | D          | Proband +               |       | 2                      | IDC*        |     |      |     |
|                                 |            | Sister +                |       | 1                      | IDC         |     |      |     |
|                                 |            | P.cousin +              |       |                        |             |     |      |     |
|                                 |            | P.cousin                |       |                        |             |     |      |     |
|                                 |            | P.aunt                  |       |                        |             |     |      |     |
|                                 |            | P.aunt                  |       |                        |             |     |      |     |
| E                               | Proband +  |                         | 3     | IDC                    | neg         | neg | Eqv  |     |
|                                 | Sister     |                         |       |                        |             |     |      |     |
|                                 | M.cousin + |                         |       |                        |             |     |      |     |
|                                 | M.cousin   |                         |       |                        |             |     |      |     |
|                                 | M.cousin + |                         | 2     | Pl. lobular            | pos         | pos |      |     |
| F                               | Proband +  |                         | 3     | IDC                    | pos         | pos | pos  |     |
|                                 | G          | Proband +               |       | 2                      | Lobular     |     |      |     |
| H                               | Sister     |                         |       |                        |             |     |      |     |
|                                 | Proband +  |                         | 2     | IDC                    | pos         | neg | Eqv  |     |
|                                 | Sister +   |                         | 2     | IDC                    | pos         | pos |      |     |
|                                 | Mother -   |                         |       |                        |             |     |      |     |
|                                 | M.g.mother |                         |       |                        |             |     |      |     |
| b) <i>PALB2</i> c.196C>T        | I          | Proband +               |       | 3                      | IDC         | pos | pos  |     |
|                                 |            | Mother -                |       |                        |             |     |      |     |
|                                 |            | P.cousin                |       |                        |             |     |      |     |
|                                 |            | P.cousin                |       |                        |             |     |      |     |
|                                 |            | P.g.-g.mother           |       |                        |             |     |      |     |
|                                 |            | P.g.aunt                |       |                        |             |     |      |     |
|                                 |            | P.g.aunt                |       |                        |             |     |      |     |
|                                 |            | P.g.aunt                |       |                        |             |     |      |     |
| c) <i>PALB2</i> c.1947_1948insA | J          | Proband +               |       | 2                      | Pl. lobular | pos | pos  | pos |
|                                 |            | Sister                  |       |                        |             |     |      |     |
|                                 |            | M.cousin                |       |                        |             |     |      |     |
|                                 |            | M.cousin                |       |                        |             |     |      |     |



**Table 3 Family cancer histories of probands, carriers of *PALB2* mutations, and the histopathology features of *PALB2*-associated tumours. (Continued)**

|                                 |   | M.FCOR        |     |     |     |         |
|---------------------------------|---|---------------|-----|-----|-----|---------|
|                                 |   | M.g.Aunt      |     |     |     |         |
|                                 |   | P.cousin      |     |     |     |         |
|                                 |   | Sister in law |     |     |     |         |
| d) <i>PALB2</i> c.2982_2983insT | K | Proband +     | 3   | IDC |     |         |
|                                 |   | Sister +      | 2-3 | IDC | pos | neg pos |
|                                 |   | M.aunt        |     |     |     |         |

Histopathology and carrier status information were presented where available. \*Secondary histological type is lobular carcinoma. Dx, diagnosis; 1°, primary; ER, estrogen receptor; PR, progesterone receptor; HER2, human epidermal growth factor-2; P, paternal; M, maternal; G, grand; G-G, great-grand; FCOR, first cousin once removed; IDC, invasive ductal carcinoma; Pos, positive; Neg, negative; +, genotyped and identified to be a carrier of the respective *PALB2* mutation; -, genotyped and found to not be a carrier of a *PALB2* mutation; Pl, pleomorphic; Uk, unknown; Eqv, equivocal, tested to be 2+ by immunohistochemistry but not confirmed by fluorescence *in situ* hybridisation

923 women from multiple-case breast cancer families screened for *PALB2* mutations in a UK study (and not in 1,084 unaffected women) [8]. *PALB2* c.196C>T has previously been reported to be carried by 2/972 (0.2%) and 1/70 (1.4%) familial breast cancer cases (and none in controls) in Australian and USA studies, respectively [38,39]. The *PALB2* c.1947\_1948insA mutation has not been previously reported.

Only one of 10 missense variants identified in this study was predicted to be deleterious by SIFT, Align GVGD and Polyphen-2. This variant, *PALB2* c.2993G>A, has previously been identified in studies examining the role of *PALB2* in multiple-case breast cancer families that are not known to carry *BRCA1* or *BRCA2* mutations. A study involving individuals in the UK population found the minor allele frequency of *PALB2* c.2993G>A to be 33/1846 (1.8%) for familial breast cancer cases and 44/2168 (2.0%) for unaffected controls [8]. Similar carrier frequencies of this *PALB2* variant in breast cancer cases and unaffected controls were also observed in the Finnish population [40]. The results of these studies provide no evidence to suggest that *PALB2* c.2993G>A is associated with breast cancer risk. These findings are consistent with the report of Tischkowitz *et al.* (2012) in that we find no evidence that rare *PALB2* missense mutations strongly influence breast cancer risk [32].

The four mutations that were predicted to produce truncated protein products were assessed for their effects on splicing and gene expression. *PALB2* c.3113G>A was observed to lead to altered splicing of transcripts. In this study, we identified two mutant transcripts that disrupt the tenth coding exon of *PALB2*. Casadei *et al.* (2011) conducted a similar analysis and detected a third transcript (designated p.Trp1038\*) in extremely low abundance (4%) [38]. The reason for the apparent discrepancy between the two studies could lie in the methodological approaches utilized as EBV transformation of LCLs, RT-PCR, gel electrophoresis and Sanger sequencing all have small inherent margins to miss transcripts that are

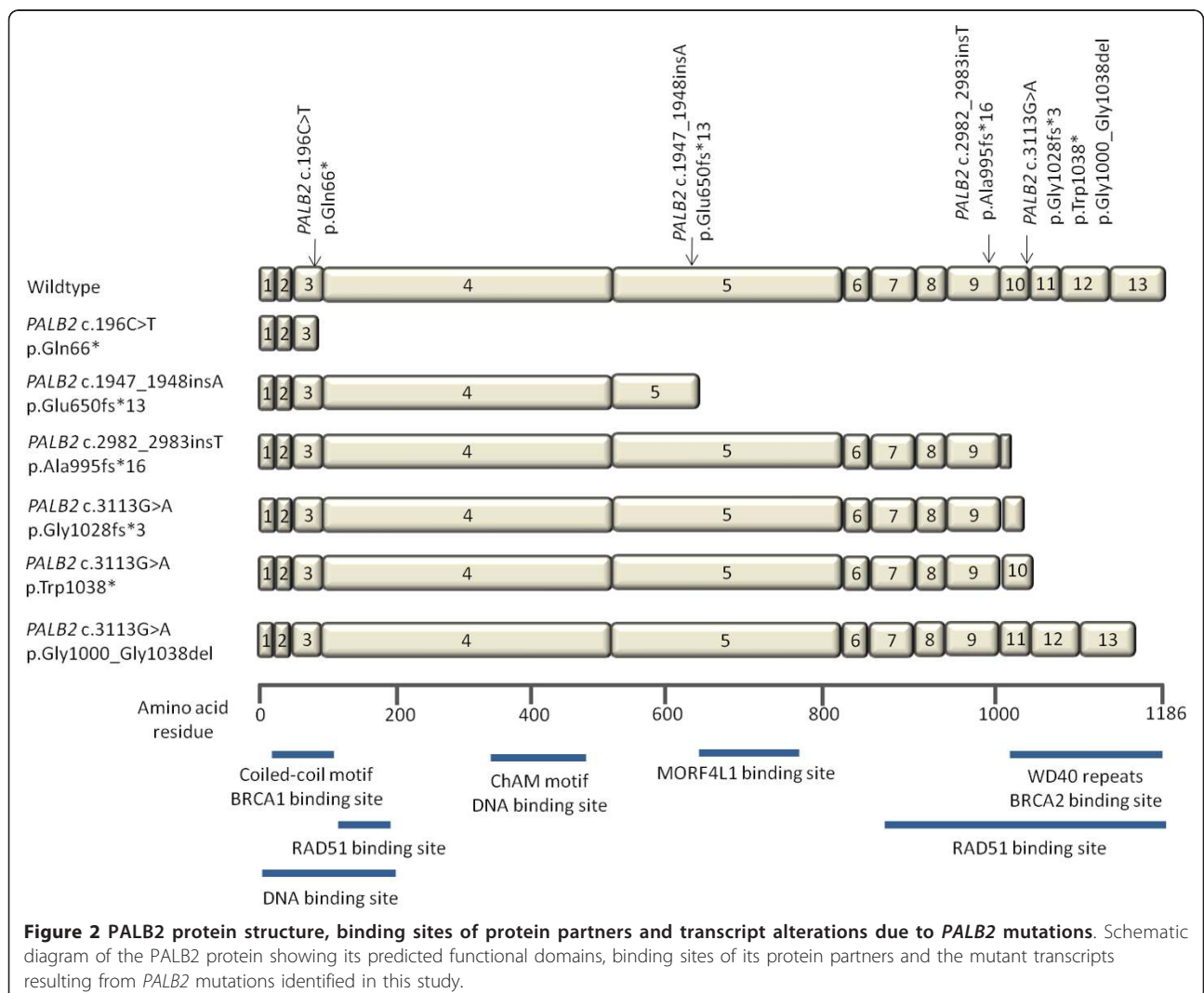
present in low quantities. It is also possible that distinct genetic background inherent to the different LCLs (derived from different people) could contribute to the different sensitivities of transcript detection between the two studies. *PALB2* c.196C>T, *PALB2* c.1947\_1948insA, and *PALB2* c.2982\_2983insT were not found to alter splicing.

The transcripts that contained PTCs occurring more than 55 nucleotides from the 3' exon-exon junction resulted in decreased gene expression via NMD with the exception of *PALB2* c.196C>T. The current model for mammalian NMD postulates that NMD targets are recognised through exon junction complex (EJC) of proteins that are deposited approximately 20 to 24 nucleotides upstream of exon-exon junctions and are not removed by the ribosome after the first round of translation [41-44]. NMD-resistant PTC-containing mRNAs based on the recognition of EJCs have previously been reported for several genes [45-47]. It has since been postulated that mammalian EJCs evolved to function as NMD enhancers and that the basic EJC-independent mechanism proposed for NMD in *Saccharomyces cerevisiae*, in which the close proximity of poly(A)-binding proteins inhibit NMD [48,49], is still conserved in higher eukaryotes [50,51]. The basic EJC-independent mechanism has been observed in humans [52]. The proximity of the PTC and the poly(A) tail depends on the number of nucleotides and/or the physical distance between them. The latter depends on the three-dimensional structure of the 3' untranslated region and/or the mRNA molecule that could be affected by intramolecular base pairing, the interaction of the mRNA with RNA-binding proteins and/or the interactions between the proteins involved in translation events. In the context of this study, the three-dimensional structure of mutant *PALB2* transcripts could result in the close proximity of the poly(A) tail and the PTC resulting from *PALB2* c.196C>T, therefore, attenuating NMD. The presence of truncated proteins in cells from mutation carriers requires further experimental validation.

Previous studies localised amino acids 21 to 39 of BRCA2 as the region which interacted with PALB2 amino acids 1022 to 1186 [14,53,54]. The evolutionarily conserved coiled-coil domain at the N-terminus of PALB2 (amino acids 6 to 90; Figure 2) interacts with a region of BRCA1 (amino acid 1393 to 1476), which also contains a conserved coiled-coil domain [15,16]. RAD51 and MORF4L1 are also binding partners of PALB2 [55-57]. Amino acid residues in the regions of 101 to 184 and 850 to 1186 of PALB2 bind to RAD51 and, in the presence of BRCA2, guide it to chromosomal lesions and enhance its performance in initiating DNA repair [56]. MORF4L1 binds to a region included in amino acid residues 611 to 764 of PALB2 [55,57] and has been suggested to mediate DNA damage response functions of the BRCA complex in chromatin [57]. *PALB2* c.196C>T, *PALB2* c.1947\_1948insA, *PALB2* c.2982\_2983insT and *PALB2* c.3113G>A would affect the binding between PALB2 and at least one of its binding partners (if they encode stable

prematurely truncated proteins). Subsequent potential consequences include impaired homologous recombination repair of DNA double-strand breaks [14-16,56,57]. Functional assays are required to elucidate the full extent of the disruption caused by *PALB2* mutations to the function(s) of PALB2 and on their impact on homologous recombination repair.

The families of several probands identified in this study as carriers of frameshift or nonsense mutations of *PALB2* were observed to include numerous diagnoses of other cancers. Leukaemia, lymphoma, melanoma, and cancers of the bowel, colon, endometrium, lung, ovary, pancreas, and prostate were repeatedly observed (three diagnoses or more) in and across families (data not shown). *PALB2* mutations have been associated with predisposition to pancreatic [58-60] and ovarian cancers [61,62], which were both observed in families identified in our study. The possible implication of *PALB2* as a predisposition gene in other cancers would need to be



further investigated. Given the rarity of *PALB2* mutations, studies that involve large numbers of *PALB2* mutation carriers would be required and could be facilitated through international efforts to combine data sets.

The tumour pathology of breast cancers arising in women who carry germline nonsense or frameshift mutations in *PALB2* was examined. Our study found that the majority of tumours that were available for analysis were high histological grade invasive ductal carcinomas (11/15; 73%), two (13%) were pleomorphic lobular carcinomas, one (7%) was a lobular (classical) carcinoma and one (7%) was a tubular-type carcinoma. Although previous studies had noted that breast cancers arising in *PALB2* mutation carriers were more likely to be ER-/PR-/HER2- (triple negative) [61,63-65], the triple-negative receptor status was not observed in our study. Further work is warranted to examine the pathology of breast cancers arising in *PALB2* mutation carriers.

*PALB2* mutation detection was conducted with the application of HRM analysis involving all coding and flanking intronic regions of the gene. Methods specific for the detection of large genomic rearrangements were not applied. Prior reports demonstrate that such mutations in *PALB2* are extremely rare and thus omission of such an analysis is unlikely to significantly impact on this study [60].

## Conclusion

We report the identification of two nonsense and two frameshift mutations of *PALB2* in 1.5% of familial breast cancer cases recruited from Familial Cancer Clinics in Australia and New Zealand. Although rare, *PALB2* mutations have been shown to confer high risks for the development of breast cancer [12,13,66]. Our data, together with that of many others [8,32,38,67-69] have shown that the prevalence of *PALB2* mutations in the context of multiple-case breast cancer families is potentially relevant to their clinical management. Data support the inclusion of *PALB2* in multi-gene panels, screened by targeted massively parallel sequencing, which are gradually being introduced as part of genetic testing. This will enable *PALB2* mutation carriers to be provided with the best available prevention and clinical management, including screening recommendations.

## Additional material

**Additional file 1: Primer sequences used for reverse transcription PCR.** Tabular data, Excel spreadsheet, .xls.

## Abbreviations

Align GVGD, Align Grantham Variation Grantham Deviation; EBV, Epstein-Barr virus; EJC, exon junction complex; ER, estrogen receptor; FANCN, Fanconi

anemia complementation group, designated subtype N; FSI, fluorescence signal intensities; GSP, gene-specific primer; HER2, human epidermal growth factor-2; HRM, high-resolution melt; kConFab, Kathleen Cuninghame Foundation Consortium for Research in Familial Breast Cancer; LCL, lymphoblastoid cell lines; NCBI, National Centre for Biotechnology Information; NMD, nonsense-mediated decay; PMSA, protein multiple sequence alignment; Polyphen-2, polymorphism phenotyping version 2; PR, progesterone receptor; PTC, premature termination codon; RT, reverse transcription; SIFT, Sorting Intolerant From Tolerant.

## Authors' contributions

ZLT conducted the laboratory-based work, analysed the data, contributed to obtaining grant funding, co-wrote the manuscript and approved the final version. DJP supervised aspects of the bench work, contributed to obtaining grant funding, co-wrote the manuscript and approved the final version. EP conducted pathology review of the histopathology slides, independently graded and typed the *PALB2*-associated tumours, analysed the data, co-wrote the manuscript and approved the final version. TN-D contributed to data analysis and in obtaining grant funding, co-wrote the manuscript and approved the final version. CAC conducted the tissue culture aspects of this bench work and approved the final version of the manuscript. JGD contributed to obtaining all necessary approvals and clearances to conduct the research, contributed to obtaining grant funding, supervised aspects of the research, contributed to the analysis of the data, co-wrote the manuscript and approved the final version. kConFab provided the research resource utilised in this report. FAO supervised aspects of the bench work, contributed to obtaining grant funding, co-wrote the manuscript and approved the final version. JLH contributed to obtaining all necessary approvals and clearances to conduct the research, contributed to obtaining grant funding, supervised aspects of the research, contributed to the analysis of the data, co-wrote the manuscript and approved the final version. IW contributed to obtaining all necessary approvals and clearances to conduct the research, contributed to obtaining grant funding, supervised aspects of the research, contributed to the analysis of the data, co-wrote the manuscript and approved the final version. DEG contributed to obtaining all necessary approvals and clearances to conduct the research, contributed to obtaining grant funding, supervised aspects of the research, contributed to the analysis of the data, co-wrote the manuscript and approved the final version. MCS has worked to establish and maintain the research resources of kConFab, conceived and designed the study, obtained all necessary approvals and clearances to conduct the research, obtained grant funding, supervised the research, analysed the data, co-wrote the manuscript and approved the final version.

## Competing interests

The authors declare that they have no competing interests.

## Acknowledgements

We wish to thank Heather Thorne (OAM), Eveline Niedermayr, all the kConFab research nurses and staff, the heads and staff of the Family Cancer Clinics, and the Clinical Follow Up Study (funded 2001-2009 by the National Health and Medical Research Council of Australia (NHMRC) and currently by the National Breast Cancer Foundation and Cancer Australia #628333) for their contributions to this resource, and the many families who contribute to kConFab. kConFab is supported by grants from the National Breast Cancer Foundation, the NHMRC and by the Queensland Cancer Fund, the Cancer Councils of New South Wales, Victoria, Tasmania and South Australia, and the Cancer Foundation of Western Australia. This work was also supported by the NHMRC (Project Grant APP1029974) and the Victorian Breast Cancer Research Consortium (VBCRC). ZLT was supported by Postgraduate Scholarships provided by the Faculty of Medicine, Dentistry and Health Sciences, The University of Melbourne and the NHMRC (Dora Lush Postgraduate Fellowship). TN-D is the recipient of a postdoctoral fellowship from the Susan G. Komen for the Cure Foundation. MCS is a NHMRC Senior Research Fellow and a Group Leader of the VBCRC. JLH is a NHMRC Australia Fellow and a VBCRC Group Leader.

## Author details

<sup>1</sup>Genetic Epidemiology Laboratory, The University of Melbourne, Grattan Street, Melbourne, Victoria 3010, Australia. <sup>2</sup>Department of Pathology, The University of Melbourne, Grattan Street, Melbourne, Victoria 3010, Australia.

<sup>3</sup>Cancer Research Division, The Peter MacCallum Cancer Centre, St Andrews Place, East Melbourne, Victoria 3002, Australia. <sup>4</sup>Centre for Molecular, Environmental, Genetic and Analytic Epidemiology, The University of Melbourne, Level 3, 207 Bouverie Street, Carlton, VIC 3053, Australia. <sup>5</sup>Department of Medicine, The University of Melbourne, Grattan Street, Melbourne, Victoria 3010, and Royal Melbourne Hospital, Grattan Street, Parkville, Victoria 3050, Australia. <sup>6</sup>Department of Dermatology and Huntsman Cancer Institute, University of Utah School of Medicine, 30 North 1900 East, Salt Lake City, UT 84112, USA.

Received: 19 October 2012 Revised: 24 January 2013  
Accepted: 28 February 2013 Published: 28 February 2013

## References

- Tutt A, Robson M, Garber JE, Domchek SM, Audeh MW, Weitzel JN, Friedlander M, Arun B, Loman N, Schmutzler RK, Wardley A, Mitchell G, Earl H, Wickens M, Carmichael J: **Oral poly(ADP-ribose) polymerase inhibitor olaparib in patients with BRCA1 or BRCA2 mutations and advanced breast cancer: a proof-of-concept trial.** *Lancet* 2010, **376**:235-244.
- Ashworth A: **A synthetic lethal therapeutic approach: poly(ADP) ribose polymerase inhibitors for the treatment of cancers deficient in DNA double-strand break repair.** *J Clin Oncol* 2008, **26**:3785-3790.
- Mavaddat N, Antoniou AC, Easton DF, Garcia-Closas M: **Genetic susceptibility to breast cancer.** *Mol Oncol* 2010, **4**:174-191.
- National Breast and Ovarian Cancer Centre: **Advice about familial aspects of breast cancer and epithelial ovarian cancer: a guide for health professionals.** *Book Advice about familial aspects of breast cancer and epithelial ovarian cancer: A guide for health professionals* National Breast and Ovarian Cancer Centre; 2010.
- Bernstein JL, Teraoka S, Southey MC, Jenkins MA, Andrulis IL, Knight JA, John EM, Lapinski R, Wolitzer AL, Whittemore AS, West D, Seminara D, Olson ER, Spurdle AB, Chenevix-Trench G, Giles GG, Hopper JL, Concannon P: **Population-based estimates of breast cancer risks associated with ATM gene variants c.7271T > G and c.1066-6T > G (IVS10-6T > G) from the breast cancer family registry.** *Hum Mutat* 2006, **27**:1122-1128.
- Seal S, Thompson D, Renwick A, Elliott A, Kelly P, Barfoot R, Chagtai T, Jayatilake H, Ahmed M, Spanova K, North B, McGuffog L, Evans DG, Eccles D; Breast Cancer Susceptibility Collaboration (UK), Easton DF, Stratton MR, Rahman N: **Truncating mutations in the Fanconi anemia J gene BRIP1 are low-penetrance breast cancer susceptibility alleles.** *Nat Genet* 2006, **38**:1239-1241.
- Meijers-Heijboer H, van den Ouweland A, Klijn J, Wasielewski M, de Snoo A, Oldenburg R, Hollestelle A, Houben B, Crepin E, van Veghel-Plandsoen M, Elstrod T, van Duijn C, Bartels C, Meijers C, Schutte M, McGuffog L, Thompson D, Easton D, Sodha N, Seal S, Barfoot R, Mangion J, Chang-Claude J, Eccles D, Eeles R, Evans DG, Houlston R, Murday V, Narod S, Peretz T, et al: **Low-penetrance susceptibility to breast cancer due to CHEK2\*1100delC in noncarriers of BRCA1 or BRCA2 mutations.** *Nat Genet* 2002, **31**:55-59.
- Rahman N, Seal S, Thompson D, Kelly P, Renwick A, Elliott A, Reid S, Spanova K, Barfoot R, Chagtai T, Jayatilake H, McGuffog L, Hanks S, Evans DG, Eccles D; Breast Cancer Susceptibility Collaboration (UK), Easton DF, Stratton MR: **PALB2, which encodes a BRCA2-interacting protein, is a breast cancer susceptibility gene.** *Nat Genet* 2007, **39**:165-167.
- Antoniou A, Pharoah PDP, Narod S, Risch HA, Eyfjord JE, Hopper JL, Loman N, Olsson H, Johannsson O, Borg A, Pasini B, Radice P, Manoukian S, Eccles DM, Tang N, Olah E, Anton-Culver H, Warner E, Lubinski J, Gronwald J, Gorski B, Tulinius H, Thorlacius S, Eerola H, Nevanlinna H, Syrjäkoski K, Kallioniemi OP, Thompson D, Evans C, Peto J, et al: **Average risks of breast and ovarian cancer associated with BRCA1 or BRCA2 mutations detected in case series unselected for family history: A combined analysis of 22 studies.** *Am J Hum Genet* 2003, **72**:1117-1130.
- Goldgar DE, Healey S, Dowty JG, Da Silva L, Chen X, Spurdle AB, Terry MB, Daly MJ, Buys SM, Southey MC, Andrulis I, John EM, BCFR, kConFab, Khanna KK, Hopper JL, Oefner PJ, Lakhani S, Chenevix-Trench G: **Rare variants in the ATM gene and risk of breast cancer.** *Breast Cancer Res* 2011, **13**:R73.
- Byrnes GB, Southey MC, Hopper JL: **Are the so-called low penetrance breast cancer genes, ATM, BRIP1, PALB2 and CHEK2, high risk for women with strong family histories?** *Breast Cancer Res* 2008, **10**:208.
- Erkko H, Dowty JG, Nikkilä J, Syrjäkoski K, Mannermaa A, Pylkäs K, Southey MC, Holli K, Kallioniemi A, Jukkola-Vuorinen A, Kataja V, Kosma VM, Xia B, Livingston DM, Winqvist R, Hopper JL: **Penetrance analysis of the PALB2 c.1592delT founder mutation.** *Clin Cancer Res* 2008, **14**:4667-4671.
- Southey MC, Teo ZL, Dowty JG, Odeh FA, Park DJ, Tischkowitz M, Sabbaghian N, Apicella C, Byrnes GB, Winship I, Baglietto L, Giles GG, Goldgar DE, Foulkes WD, Hopper JL; kConFab for the Breast Cancer Family Registry: **A PALB2 mutation associated with high risk of breast cancer.** *Breast Cancer Res* 2010, **12**:R109.
- Xia B, Sheng Q, Nakanishi K, Ohashi A, Wu JM, Christ N, Liu XG, Jasin M, Couch FJ, Livingston DM: **Control of BRCA2 cellular and clinical functions by a nuclear partner, PALB2.** *Molecular Cell* 2006, **22**:719-729.
- Sy SMH, Huen MSY, Chen JJ: **PALB2 is an integral component of the BRCA complex required for homologous recombination repair.** *Proc Natl Acad Sci USA* 2009, **106**:7155-7160.
- Zhang F, Ma JL, Wu JX, Ye L, Cai H, Xia B, Yu XC: **PALB2 links BRCA1 and BRCA2 in the DNA-damage response.** *Current Biology* 2009, **19**:524-529.
- Reid S, Schindler D, Hanenberg H, Barker K, Hanks S, Kalb R, Neveling K, Kelly P, Seal S, Freund M, Wurm M, Batish SD, Lach FP, Yetgin S, Neitzel H, Ariffin H, Tischkowitz M, Mathew CG, Auerbach AD, Rahman N: **Biallelic mutations in PALB2 cause Fanconi anemia subtype FA-N and predispose to childhood cancer.** *Nat Genet* 2007, **39**:162-164.
- Xia B, Dorsman JC, Ameziane N, de Vries Y, Rooimans MA, Sheng Q, Pals G, Errami A, Gluckman E, Llera J, Wang W, Livingston DM, Joenje H, de Winter JP: **Fanconi anemia is associated with a defect in the BRCA2 partner PALB2.** *Nat Genet* 2007, **39**:159-161.
- Mann GJ, Thorne H, Balleine RL, Butow PN, Clarke CL, Edkins E, Evans GM, Fereday S, Haan E, Gattas M, Giles GG, Goldblatt J, Hopper JL, Kirk J, Leary JA, Lindeman G, Niedermayr E, Phillips KA, Picken S, Pupo GM, Saunders C, Scott CL, Spurdle AB, Suthers G, Tucker K, Chenevix-Trench G; Kathleen Cuningham Consortium for Research in Familial Breast Cancer: **Analysis of cancer risk and BRCA1 and BRCA2 mutation prevalence in the kConFab familial breast cancer resource.** *Breast Cancer Res* 2006, **8**:R12.
- John EM, Hopper JL, Beck JC, Knight JA, Neuhausen SL, Senie RT, Ziegas A, Andrulis IL, Anton-Culver H, Boyd N, Buys SS, Daly MB, O'Malley FP, Santella RM, Southey MC, Venne VL, Venter DJ, West DW, Whittemore AS, Seminara D; Breast Cancer Family Registry: **The Breast Cancer Family Registry: an infrastructure for cooperative multinational, interdisciplinary and translational studies of the genetic epidemiology of breast cancer.** *Breast Cancer Res* 2004, **6**:R375-R389.
- Elston CW, Ellis IO, Pinder SE: **Pathological prognostic factors in breast cancer.** *Crit Rev in Oncol Hematol* 1999, **31**:209-223.
- Wolff AC, Hammond ME, Schwartz JN, Hagerty KL, Allred DC, Cote RJ, Dowsett M, Fitzgibbons PL, Hanna WM, Langer A, McShane LM, Paik S, Pegram MD, Perez EA, Press MF, Rhodes A, Sturgeon C, Taube SE, Tubbs R, Vance GH, van de Vijver M, Wheeler TM, Hayes DF; American Society of Clinical Oncology, College of American Pathologists: **American Society of Clinical Oncology/College of American Pathologists guideline recommendations for human epidermal growth factor receptor 2 testing in breast cancer.** *J Clin Oncol* 2007, **25**:118-145.
- SIFT. [<http://sift.jcvi.org/>].
- Kumar P, Henikoff S, Ng PC: **Predicting the effects of coding non-synonymous variants on protein function using the SIFT algorithm.** *Nat Protoc* 2009, **4**:1073-1082.
- Ng PC, Henikoff S: **SIFT: predicting amino acid changes that affect protein function.** *Nucleic Acids Res* 2003, **31**:3812-3814.
- Align GVGD. [<http://agvgd.iarc.fr/>].
- Tavtigian SV, Deffenbaugh AM, Yin L, Judkins T, Scholl T, Samollow PB, de Silva D, Zharkikh A, Thomas A: **Comprehensive statistical study of 452 BRCA1 missense substitutions with classification of eight recurrent substitutions as neutral.** *J Med Genet* 2006, **43**:295-305.
- Mathe E, Olivier M, Kato S, Ishioka C, Hainaut P, Tavtigian SV: **Computational approaches for predicting the biological effect of p53 missense mutations: a comparison of three sequence analysis based methods.** *Nucleic Acids Res* 2006, **34**:1317-1325.
- Tavtigian SV, Byrnes GB, Goldgar DE, Thomas A: **Classification of rare missense substitutions, using risk surfaces, with genetic- and molecular-epidemiology applications.** *Hum Mutat* 2008, **29**:1342-1354.
- PolyPhen-2: prediction of functional effects of human nsSNPs. [<http://genetics.bwh.harvard.edu/pph2/>].

31. Adzhubei IA, Schmidt S, Peshkin L, Ramensky VE, Gerasimova A, Bork P, Kondrashov AS, Sunyaev SR: **A method and server for predicting damaging missense mutations.** *Nat Methods* 2010, **7**:248-249.
32. Tischkowitz M, Capanu M, Sabbaghian N, Li L, Liang X, Vallée MP, Tavtigian SV, Concannon P, Foulkes WD, Bernstein L; WECARE Study Collaborative Group, Bernstein JL, Begg CB: **Rare germline mutations in PALB2 and breast cancer risk: a population-based study.** *Hum Mutat* 2012, **33**:674-680.
33. Southey MC, Tesoriero A, Young MA, Holloway AJ, Jenkins MA, Whitty J, Misfud S, McLachlan SA, Venter DJ, Armes JE: **A specific GFP expression assay, penetrance estimate, and histological assessment for a putative splice site mutation in BRCA1.** *Hum Mutat* 2003, **22**:86-91.
34. Bateman JF, Freddi S, Lamande SR, Byers P, Nasioulas S, Douglas J, Otway R, Kohonen-Corish M, Edkins E, Forrest S: **Reliable and sensitive detection of premature termination mutations using a protein truncation test designed to overcome problems of nonsense-mediated mRNA instability (vol 13, pg 311, 1998).** *Hum Mutat* 1999, **14**:86-86.
35. NCBI. [http://www.ncbi.nlm.nih.gov/].
36. e!Ensembl. [http://asia.ensembl.org/index.html].
37. Tavtigian SV, Greenblatt MS, Lesueur F, Byrnes GB: **In silico analysis of missense substitutions using sequence-alignment based methods.** *Hum Mutat* 2008, **29**:1327-1336.
38. Casadei S, Norquist BM, Walsh T, Stray S, Mandell JB, Lee MK, Stamatoyannopoulos JA, King MC: **Contribution of inherited mutations in the BRCA2-interacting protein PALB2 to familial breast cancer.** *Cancer Res* 2011, **71**:2222-2229.
39. Wong MW, Nordfors C, Mossman D, Pecenetelovska G, Avery-Kiejda KA, Talseth-Palmer B, Bowden NA, Scott RJ: **BRIP1, PALB2, and RAD51C mutation analysis reveals their relative importance as genetic susceptibility factors for breast cancer.** *Breast Cancer Res Treat* 2011, **127**:853-859.
40. Hellebrand H, Sutter C, Honisch E, Gross E, Wappenschmidt B, Schem C, Deissler H, Ditsch N, Gress V, Kiechle M, Bartram CR, Schmutzler RK, Niederacher D, Arnold N, Meindl A: **Germline mutations in the PALB2 gene are population specific and occur with low frequencies in familial breast cancer.** *Hum Mutat* 2011, **32**:E2176-E2188.
41. Medghalchi SM, Frischmeyer PA, Mendell JT, Kelly AG, Lawler AM, Dietz HC: **Rent1, a trans-effector of nonsense-mediated mRNA decay, is essential for mammalian embryonic viability.** *Hum Mol Genet* 2001, **10**:99-105.
42. Mendell JT, Medghalchi SM, Lake RG, Noensie EN, Dietz HC: **Novel Upf2p orthologues suggest a functional link between translation initiation and nonsense surveillance complexes.** *Mol Cell Biol* 2000, **20**:8944-8957.
43. Le Hir H, Gatfield D, Izaurralde E, Moore MJ: **The exon-exon junction complex provides a binding platform for factors involved in mRNA export and nonsense-mediated mRNA decay.** *Embo J* 2001, **20**:4987-4997.
44. Le Hir H, Izaurralde E, Maquat LE, Moore MJ: **The spliceosome deposits multiple proteins 20-24 nucleotides upstream of mRNA exon-exon junctions.** *Embo J* 2000, **19**:6860-6869.
45. Durand C, Roeth R, Dweep H, Vlatkovic I, Decker E, Schneider KU, Rappold G: **Alternative splicing and nonsense-mediated RNA decay contribute to the regulation of SHOX expression.** *PLoS One* 2011, **6**: e18115.
46. Grandemange S, Soler S, Touitou I: **Expression of the familial Mediterranean fever gene is regulated by nonsense-mediated decay dagger.** *Hum Mol Genet* 2009, **18**:4746-4755.
47. Danckwardt S, Neu-Yilik G, Thermann R, Frede U, Hentze MW, Kulozik AE: **Abnormally spliced beta-globin mRNAs: a single point mutation generates transcripts sensitive and insensitive to nonsense-mediated mRNA decay.** *Blood* 2002, **99**:1811-1816.
48. Amrani N, Sachs MS, Jacobson A: **Early nonsense: mRNA decay solves a translational problem.** *Nat Rev Mol Cell Biol* 2006, **7**:415-425.
49. Amrani N, Ganesan R, Kerestevan S, Mangus DA, Ghosh S, Jacobson A: **A faux 3' UTR promotes aberrant termination and triggers nonsense-mediated mRNA decay.** *Nature* 2004, **432**:112-118.
50. Hogg JR, Goff SP: **Upf1 senses 3' UTR length to potentiate mRNA decay.** *Cell* 2010, **143**:379-389.
51. Eberle AB, Stalder L, Mathys H, Orozco RZ, Muhlemann O: **Posttranscriptional gene regulation by spatial rearrangement of the 3' untranslated region.** *PLoS Biol* 2008, **6**:849-859.
52. Ivanov PV, Gehring NH, Kunz JB, Hentze MW, Kulozik AE: **Interactions between UPF1, eRFs, PABP and the exon junction complex suggest an integrated model for mammalian NMD pathways.** *Embo J* 2008, **27**:736-747.
53. Oliver AW, Swift S, Lord CJ, Ashworth A, Pearl LH: **Structural basis for recruitment of BRCA2 by PALB2.** *Embo Rep* 2009, **10**:990-996.
54. Sy SMH, Huen MSY, Zhu YY, Chen JJ: **PALB2 regulates recombinational repair through chromatin association and oligomerization.** *J Biol Chem* 2009, **284**:18302-18310.
55. Sy SMH, Huen MSY, Chen JJ: **MRG15 is a novel PALB2-interacting factor involved in homologous recombination.** *J Biol Chem* 2009, **284**:21127-21131.
56. Dray E, Etchin J, Wiese C, Saro D, Williams GJ, Hammel M, Yu X, Galkin VE, Liu D, Tsai MS, Sy SM, Schild D, Egelman E, Chen J, Sung P: **Enhancement of RAD51 recombinase activity by the tumor suppressor PALB2.** *Nat Struct Mol Biol* 2010, **17**:1255-1259.
57. Hayakawa T, Zhang F, Hayakawa N, Ohtani Y, Shinmyozu K, Nakayama J, Andreassen PR: **MRG15 binds directly to PALB2 and stimulates homology-directed repair of chromosomal breaks.** *J Cell Sci* 2010, **123**:1124-1130.
58. Jones S, Hruban RH, Kamiyama M, Borges M, Zhang X, Parsons DW, Lin JC, Palmisano E, Brune K, Jaffee EM, Iacobuzio-Donahue CA, Maitra A, Parmigiani G, Kern SE, Velculescu VE, Kinzler KW, Vogelstein B, Eshleman JR, Goggins M, Klein AP: **Exomic sequencing identifies PALB2 as a pancreatic cancer susceptibility gene.** *Science* 2009, **324**:217.
59. Slater EP, Langer P, Niemczyk E, Strauch K, Butler J, Habbe N, Neoptolemos JP, Greenhalf W, Bartsch DK: **PALB2 mutations in European familial pancreatic cancer families.** *Clin Genet* 2010, **78**:490-494.
60. Tischkowitz MD, Sabbaghian N, Hamel N, Borgida A, Rosner C, Taherian N, Srivastava A, Holter S, Rothenmund H, Ghadirian P, Foulkes WD, Gallinger S: **Analysis of the gene coding for the BRCA2-interacting protein PALB2 in familial and sporadic pancreatic cancer.** *Gastroenterology* 2009, **137**:1183-1186.
61. Dansonka-Mieszkowska A, Kluska A, Moes J, Dabrowska M, Nowakowska D, Niwinska A, Derlatka P, Cendrowski K, Kuprynczyk J: **A novel germline PALB2 deletion in Polish breast and ovarian cancer patients.** *BMC Med Genet* 2010, **11**:20.
62. Prokofyeva D, Bogdanova N, Bermisheva M, Zinnatullina G, Hillemanns P, Khusnutdinova E, Dork T: **Rare occurrence of PALB2 mutations in ovarian cancer patients from the Volga-Ural region.** *Clin Genet* 2012, **82**:100-101.
63. García MJ, Fernández V, Osorio A, Barroso A, Llorca G, Lázaro C, Blanco I, Caldes T, de la Hoya M, Ramón Y Cajal T, Alonso C, Tejada MI, San Román C, Robles-Díaz L, Urioste M, Benitez J: **Analysis of FANCB and FANCF/PALB2 Fanconi anemia genes in BRCA1/2-negative Spanish breast cancer families.** *Breast Cancer Res Treat* 2009, **113**:545-551.
64. Tischkowitz M, Xia B: **PALB2/FANCF: recombining cancer and Fanconi anemia.** *Cancer Res* 2010, **70**:7353-7359.
65. Heikkinen T, Karkkainen H, Aaltonen K, Milne RL, Heikkila P, Aittomaki K, Blomqvist C, Nevanlinna H: **The breast cancer susceptibility mutation PALB2 1592delT is associated with an aggressive tumor phenotype.** *Clin Cancer Res* 2009, **15**:3214-3222.
66. Ghadirian P, Robidoux A, Zhang P, Royer R, Akbari M, Zhang S, Fafard E, Costa M, Martin G, Potvin C, Patocskai E, Larouche N, Younan R, Nassif E, Giroux S, Narod SA, Rousseau F, Foulkes WD: **The contribution of founder mutations to early-onset breast cancer in French-Canadian women.** *Clin Genet* 2009, **76**:421-426.
67. Hofstatter EW, Domchek SM, Miron A, Garber J, Wang M, Composites K, Boghossian L, Miron PL, Nathanson KL, Tung N: **PALB2 mutations in familial breast and pancreatic cancer.** *Fam Cancer* 2011, **10**:225-231.
68. Papi L, Putignano AL, Congregati C, Piaceri I, Zanna I, Sera F, Morrone D, Genuardi M, Palli D: **A PALB2 germline mutation associated with hereditary breast cancer in Italy.** *Fam Cancer* 2010, **9**:181-185.
69. Cao AY, Huang J, Hu Z, Li WF, Ma ZL, Tang LL, Zhang B, Su FX, Zhou J, Di GH, Shen KW, Wu J, Lu JS, Luo JM, Yuan WT, Shen ZZ, Huang W, Shao ZM: **The prevalence of PALB2 germline mutations in BRCA1/BRCA2 negative Chinese women with early onset breast cancer or affected relatives.** *Breast Cancer Res Treat* 2009, **114**:457-462.
70. Bogdanova N, Sokolenko AP, Iyevleva AG, Alysheva SN, Blaut M, Bremer M, Christiansen H, Rave-Frank M, Dork T, Imyanitov EN: **PALB2 mutations in German and Russian patients with bilateral breast cancer.** *Breast Cancer Res Treat* 2011, **126**:545-550.
71. Erko H, Xia B, Nikkilä J, Schleutker J, Syrjäkoski K, Mannermaa A, Kallioniemi A, Pylkäs K, Karppinen SM, Rapakko K, Miron A, Sheng Q, Li G,

Mattila H, Bell DW, Haber DA, Grip M, Reiman M, Jukkola-Vuorinen A, Mustonen A, Kere J, Aaltonen LA, Kosma VM, Kataja V, Soini Y, Drapkin RI, Livingston DM, Winqvist R: **A recurrent mutation in PALB2 in Finnish cancer families.** *Nature* 2007, **446**:316-319.

doi:10.1186/bcr3392

**Cite this article as:** Teo *et al.*: Prevalence of *PALB2* mutations in Australasian multiple-case breast cancer families. *Breast Cancer Research* 2013 **15**:R17.

**Submit your next manuscript to BioMed Central  
and take full advantage of:**

- Convenient online submission
- Thorough peer review
- No space constraints or color figure charges
- Immediate publication on acceptance
- Inclusion in PubMed, CAS, Scopus and Google Scholar
- Research which is freely available for redistribution

Submit your manuscript at  
[www.biomedcentral.com/submit](http://www.biomedcentral.com/submit)

