

 Open access • Journal Article • DOI:10.1021/JP501032D

Probing the Mechanism of Sodium Ion Insertion into Copper Antimony Cu₂Sb Anodes — [Source link](#)

[Loïc Baggetto](#), [Kyler J. Carroll](#), [Hien-Yoong Hah](#), [Charles E. Johnson](#) ...+5 more authors

Institutions: [Oak Ridge National Laboratory](#), [University of California, San Diego](#), [University of Tennessee Space Institute](#)

Published on: 04 Apr 2014 - [Journal of Physical Chemistry C](#) (American Chemical Society)

Topics: [Amorphous solid](#), [Absorption spectroscopy](#), [Phase \(matter\)](#), [Intermetallic](#) and [Mössbauer spectroscopy](#)

Related papers:

- [Better cycling performances of bulk Sb in Na-ion batteries compared to Li-ion systems: an unexpected electrochemical mechanism.](#)
- [Electrospun Sb/C Fibers for a Stable and Fast Sodium-Ion Battery Anode](#)
- [High capacity Na-storage and superior cyclability of nanocomposite Sb/C anode for Na-ion batteries.](#)
- [Sodium-Ion Batteries](#)
- [Intrinsic thermodynamic and kinetic properties of Sb electrodes for Li-ion and Na-ion batteries: experiment and theory](#)

Share this paper:    

View more about this paper here: <https://typeset.io/papers/probing-the-mechanism-of-sodium-ion-insertion-into-copper-2muph2lpjo>

Probing the Mechanism of Sodium Ion Insertion into Copper Antimony Cu_2Sb Anodes

Loïc Baggetto,^{*,†} Kyler J. Carroll,[‡] Hien-Yoong Hah,^{§,||} Charles E. Johnson,[§] David R. Mullins,[⊥] Raymond R. Unocic,[†] Jacqueline A. Johnson,^{§,||} Ying Shirley Meng,[‡] and Gabriel M. Veith^{*,†}

[†]Materials Science and Technology Division, Oak Ridge National Laboratory, Oak Ridge, Tennessee 37831, United States

[‡]Department of NanoEngineering, University of California, San Diego, La Jolla, California 92037, United States

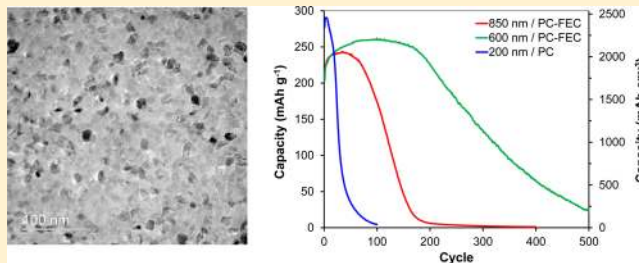
[§]Center for Laser Applications, University of Tennessee Space Institute, Tullahoma, Tennessee 37388, United States

^{||}Department of Mechanical, Aeronautical and Biomedical Engineering, University of Tennessee Space Institute, Tullahoma, Tennessee 37388, United States

[⊥]Chemical Sciences Division, Oak Ridge National Laboratory, Oak Ridge, Tennessee 37831, United States

Supporting Information

ABSTRACT: We report experimental studies to understand the reaction mechanism of the intermetallic anode Cu_2Sb with Na and demonstrate that it is capable of retaining about 250 mAh g^{-1} over 200 cycles when using fluoroethylene carbonate additive. X-ray diffraction data indicate during the first discharge the reaction leads to the formation of crystalline Na_3Sb via an intermediate amorphous phase. Upon desodiation the Na_3Sb reverts to an amorphous phase, which then recrystallizes into Cu_2Sb at full charge, indicating a high degree of structural reversibility. The structure after charging to 1 V is different from that of Cu_2Sb , as indicated by X-ray absorption spectroscopy and ^{121}Sb Mössbauer spectroscopy, and is due to the formation of an amorphous Na–Cu–Sb phase. At full discharge, an isomer shift of -8.10 mm s^{-1} is measured, which is close to that of a Na_3Sb reference powder (-7.95 mm s^{-1}) and in agreement with the formation of Na_3Sb domains. During charge, the isomer shift at 1 V (-9.29 mm s^{-1}) is closer to that of the pristine material (-9.67 mm s^{-1}), but the lower value is consistent with the lack of full desodiation, as expected from the potential profile and the XAS data.



1. INTRODUCTION

Recently, there has been a surge of activity to identify stable materials for sodium-ion batteries.^{1–4} This surge is fueled by the desire to find alternative energy storage technologies to the ubiquitous lithium-ion chemistries with an emphasis on sustainable systems using low cost and naturally abundant chemical elements. Compared to Na-ion cathodes, the investigation of Na-ion anode materials is in its infancy.^{1–4} Recently, there have been several significant advances in the study of sodium-ion anode materials.^{5–19} The discovery of new applicable chemistry in intercalation compounds, such as $\text{Na}_2\text{Ti}_3\text{O}_7$,⁵ or hard carbons^{6,7} are obvious examples. These chemistries, however, suffer from relatively low storage capacity, especially on a volumetric basis.

In order to increase the anode storage capacity and rate performance, metallic systems have been studied. The most promising elements to deliver high storage capacity are Sn^{8,9} and Sb,^{10,11} which have large theoretical storage capacities up to 847 and 660 mAh g^{-1} , respectively. A natural progression of this research is the investigation of intermetallic anodes which have a number of advantages over their pure counterparts such as enhanced capacity retention and faster kinetics as demonstrated for Li-ion batteries.¹² This triggered the

exploration of several Sb- and Sn-based intermetallic compounds, such as SnSb ,¹³ Cu_6Sn_5 ,¹⁴ Cu_2Sb ,^{15,16} AlSb ,¹⁷ and Mo_3Sb_7 ,¹⁸ as well as neighboring elements like Ge¹⁹ and In.²⁰

One potential intermetallic anode of great interest is Cu_2Sb , which demonstrates high Na storage capacity (250–290 mAh g^{-1} or 2100–2400 mAh cm^{-3}) and very high rate performance (10 C).¹⁵ In a previous study of the reaction end products using X-ray diffraction (XRD), we identified nanocrystalline Na_3Sb ($P63/mmc$) as the end-member of the Na-ion electrochemical reaction,¹⁵ which was recently confirmed.¹⁶ The present contribution dwells much further into the Na-ion reaction mechanism of Cu_2Sb by extending the XRD investigation using Mo $K\alpha$ radiation at several electrode potentials during the first and second cycles. In addition, we report the local atomic structure of the electrode material with the aid of synchrotron-based X-ray absorption near-edge spectroscopy (XANES) and extended X-ray absorption fine structure (EXAFS) techniques at both the Cu K-edge and Sb K-edge, and the local chemical

Received: January 29, 2014

Revised: March 21, 2014

Published: March 25, 2014

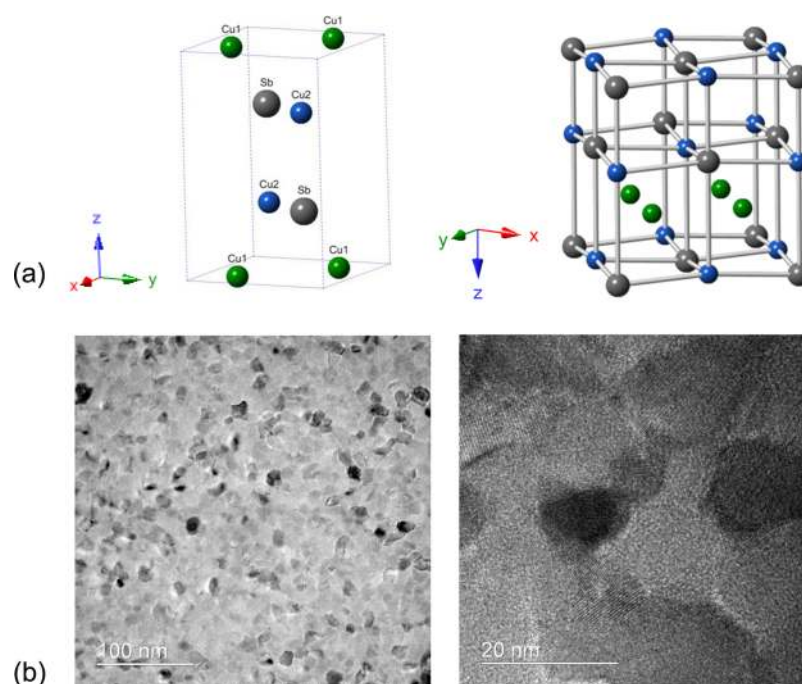


Figure 1. (a) Schematic representation of $P4/nmm$ tetragonal Cu_2Sb crystal structure. The left-hand-side figure shows a tetragonal subcell of the full unit cell (Figure S1). The right-hand-side figure represents the distorted fcc Sb cell which encompasses four Cu_2Sb formula units. (b) TEM characterization of the pristine thin films. The left-hand-side figure shows a BFTEM photograph of the film deposited onto an electron transparent SiN_x window, and the right-hand-side figure displays a high-resolution TEM photograph of the same film.

environment of Sb using ^{121}Sb Mössbauer spectroscopy, with the aid of Cu_2Sb , Sb, and Na_3Sb reference compounds.

2. EXPERIMENTAL SECTION

2.1. Sample Preparation. Thin films were deposited onto roughened Cu foil, or an Al foil, using dc magnetron sputtering in Ar, as reported earlier.¹⁵ In brief, sputter deposition conditions for Cu_2Sb are 30 W (power), 15 mTorr (pressure), and 5 cm target–substrate distance. With Al substrates a Cr adhesion layer was deposited at 30 W, 20 mTorr, and with a 5 cm target–substrate distance. After preparation, all the samples were stored inside an Ar-filled glovebox. For XRD and Mössbauer spectroscopy measurements, relatively thick films ($\sim 2\text{--}4\ \mu\text{m}$) were deposited onto roughened Cu foil to obtain sufficient signal. For materials used in Mössbauer spectroscopy measurements, the charge was limited to 1 V due to delamination of the comparatively thick films ($\sim 3\text{--}4\ \mu\text{m}$). For Cu K-edge XAS, the use of Al is essential to prevent absorption by the Cu collector foil. However, using Al limits the study of the charge to 1 V due to the poor adhesion of Cu_2Sb onto this material.

A reference powder of Na_3Sb was prepared inside an Ar-filled glovebox by adding stoichiometric amounts of Na (Sigma-Aldrich) and ball-milled Sb (99+%, Alfa Aesar) inside a homemade Al foil crucible placed inside a Pyrex tube. Using a Swagelok fitting connected to a vacuum valve, a primary vacuum was created inside the tube. Subsequently, the tube was placed in an oven at $175\ ^\circ\text{C}$ for several hours. As soon as the Na melted, it reacted with Sb to form a solid compound. The recovered powder was ground thoroughly, pressed into a pellet, and further annealed at $175\ ^\circ\text{C}$. This procedure was repeated to ensure homogeneity of the compound. The recovered powder was conditioned under Ar for further XRD, XAS, and Mössbauer spectroscopy analyses.

2.2. Characterization. Electrochemical characterization was conducted at $25\ ^\circ\text{C}$ with two-electrode 2032 coin cells prepared inside an Ar-filled glovebox using pure Na as the counter electrode and two disks of glass fiber separators impregnated with 1 M NaClO_4 (Sigma-Aldrich) dissolved in anhydrous propylene carbonate (PC, Sigma-Aldrich) electrolyte. When specified, 5 wt % anhydrous fluoroethylene carbonate (FEC, Sigma-Aldrich) was used as an electrolyte additive. Cycling with a constant current (CC) and with a constant current combined with a constant voltage hold (CCCV) were performed with a Maccor 4000 battery cycler. For XRD, XAS, and Mössbauer spectroscopy characterization, specimens were extracted from coin cells inside an Ar-filled glovebox, pressed onto a fiber paper to remove the excess electrolyte, sealed with Kapton tape, and packaged under Ar inside heat-sealed pouch bags. The electrodes were not washed prior to analysis since the studies focused on the bulk structures not the surface chemistries.

A Bruker D8 Advance diffractometer with Mo $K\alpha$ source and Zr filter was used for XRD collection. Cycled electrodes were sealed onto a glass slide using Kapton tape.^{8,10,14–19} For Na_3Sb powder data acquisition, the ground powder was loaded inside a 0.5 mm glass capillary which was heat-sealed with a methane–oxygen torch.

Transmission electron microscopy (TEM) was performed using a Hitachi HF3300 S/TEM instrument operating at 300 kV. A 30 nm thick film deposited onto an electron transparent SiN_x membrane of a TEM chip was used for characterizing the structure of the pristine material.

XAS data were recorded at the Cu K-edge (8979 eV) and Sb K-edge (30491 eV) at beamlines X19a and X18b, respectively, of the National Synchrotron Light Source, at Brookhaven National Laboratory. A Si(111) double crystal monochromator was used, and in the case of Cu K-edge measurements, the

monochromator was detuned 30% to reject higher harmonics. XAS was measured simultaneously in transmission and fluorescence. For the Cu K-edge, ion chambers for measuring I_0 and I_t were filled with a 50:50 mixture of N_2 :Ar. For the Sb K-edge, ion chambers for measuring I_0 and I_t were filled with 100% Ar and a 50:50 mixture of Kr: N_2 , respectively. Fluorescence was measured using a large area passivated implanted planar silicon (PIPS) detector perpendicular to the incident beam. All data were recorded at room temperature on samples sealed in Al pouch bags. Sb, Cu_2Sb , and Na_3Sb powders, Cu_2Sb pristine films, and Cu foil were measured as references. The programs ATHENA (version 0.8.061) and ARTEMIS (version 0.8.014) were used to reduce and fit the EXAFS data, respectively.²⁰ Data reduction consisted of pre-edge subtraction, background determination, normalization, and spectral averaging. The k^3 - and k^1 -weighted EXAFS functions, $\chi(k)$, were Fourier transformed and fitted in R space.

¹²¹Sb Mössbauer spectroscopy was recorded in the constant acceleration mode using a system manufactured by SEE Co., Edina, MN. The source was 100 μ Ci of ^{121m}Sn in $BaSnO_3$ at room temperature, and a Xe- CH_4 proportional counter was used to detect the sum of the 37.2 keV γ -rays and 8 keV escape peak. Several thick electrodes, providing around 20 mg of starting Cu_2Sb material, were measured simultaneously to provide enough absorption. The samples were cooled to 6–7 K under vacuum in a closed-cycle cryogen-free refrigerator (Janis, Wilmington, MA, and SEE Co.), partly to increase the Mössbauer fraction and partly to suppress the materials oxidation. The velocity scale was calibrated with an ⁵⁷Fe absorber and a $Rh^{57}Co$ source and is quoted relative to the $BaSnO_3$ source. The spectra were fitted with a custom Mössbauer program using a Lorentzian line profile. Powders of Sb, Cu_2Sb , and Na_3Sb were used as references.

3. RESULTS AND DISCUSSION

3.1. Electrochemical Properties of Cu_2Sb Anode versus Na. The structure of Cu_2Sb ($P4/nmm$) is a tetragonal unit cell (Figure S1), of which a subcell comprising a single Cu_2Sb formula unit is depicted in Figure 1a. The tetragonal structure can also be described as a distorted face-centered cubic (fcc) Sb structure with dimensions of $\sim 5.6 \times 5.6 \times 6.1$ Å (Figure 1a). Within this pseudo-fcc structure, half of the Cu atoms (Cu1, green atoms) occupy half of the tetrahedral sites whereas the other half (Cu2, blue atoms) are located in the distorted octahedra. The structure of the starting films has been characterized by TEM. The material deposited onto a SiN_x window is composed of small grains with diameters from 5 to 20 nm. The presence of a crystalline material is clearly evidenced by the presence of lattice fringes and variations in contrast due to differences in crystal orientation (Figure 1b).

The electrochemical properties of Cu_2Sb as an anode material for Na-ion batteries are presented in Figure 2. The cycling performance of the films cycled in $NaClO_4$ dissolved in PC was formerly found to be satisfactory for tens of cycles only (blue curve, Figure 2a).¹⁵ The use of appropriate electrolyte additives, such as FEC, promotes the cycle life of metallic anodes significantly^{11,13,16–20} thanks to the formation of a more stable inorganic solid electrolyte interphase (SEI) layer.^{10,18} Two electrodes cycled with FEC additive show significantly improved capacity retention (Figure 2a, green and red curves). For these thicker electrodes, the slow increase of capacity during the first few cycles is related to the use of FEC, which induces the presence of larger overpotentials (0.15–0.2 V)

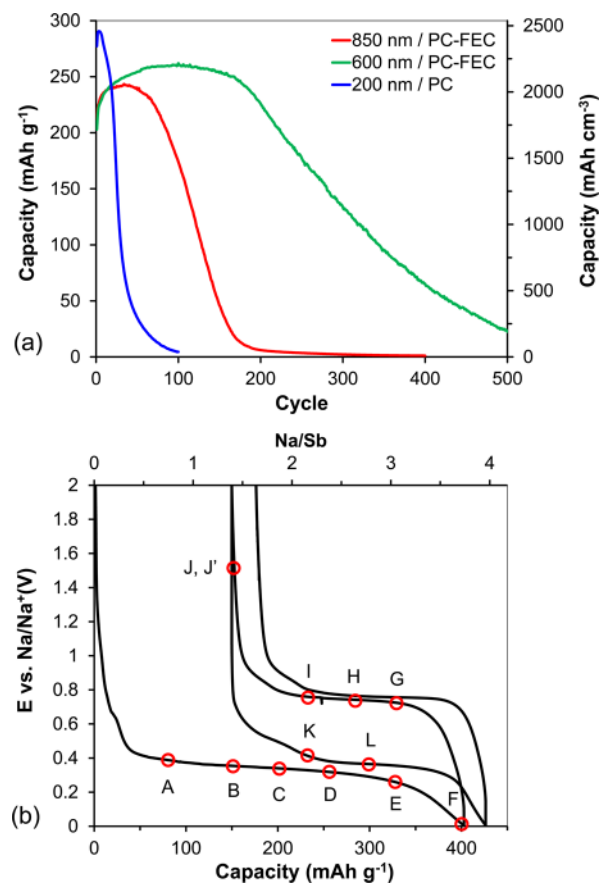


Figure 2. Electrochemical characterizations of Cu_2Sb thin films during the Na-ion reaction. (a) Cycle life of Cu_2Sb electrodes cycled at $80 \mu A cm^{-2}$ from 0 to 1 V in a PC/FEC electrolyte compared the electrode cycled in pure PC.¹⁵ (b) Typical electrochemical potential profiles during the first two cycles for an electrode measured at $20 \mu A cm^{-2}$ in PC-based electrolyte. The letters and closed markers indicate the electrodes selected for XRD characterization (Figure 3).

during discharge that eventually decrease upon further cycling (Figure S2). The presence of larger overpotentials was previously observed in the case of Ge^{19} and was measured systematically for Mo_3Sb_7 , $AlSb$, and $SnSb$ thin film electrodes of similar thicknesses (not presented). The stable capacities around 250 mAh g^{-1} , measured for these thicker films (600–850 nm), are somewhat lower compared to the thin electrode (290 mAh g^{-1}). This difference is due to the better diffusion kinetics of thinner films, which allows access to almost all the electrode material volume under the present experimental conditions ($80 \mu A cm^{-2}$). Nonetheless, it is clear that the application of 5 wt % FEC to the electrolyte greatly improves the capacity retention of thicker electrodes over hundreds of cycles with a stable capacity of about 250 mAh g^{-1} (Figure 2a). This important improvement is likely related to the formation of a much more stable inorganic SEI layer rich in NaF, as we discussed earlier,^{10,18} and demonstrates the potential of Cu_2Sb anode materials for Na-ion batteries. When a thicker film is used (850 nm), the capacity declines faster than for a thinner film (600 nm) due to the larger volume changes of the thicker layer.

The electrochemical reaction of Cu_2Sb electrodes during the first two cycles is now discussed. During the initial sodiation, the potential profile is dominated by a pronounced plateau centered around 0.35 V. The associated capacity is significantly

larger than during the following discharges, which also show a slope around 0.5 V. The longer discharge plateau is mostly related to Coulombic losses due to electrolyte decomposition since the reaction during the initial discharge consists not only of the electrode bulk reaction but also shows the passivation of the electrode, current collector, and coin cell hardware surfaces in contact with the electrolyte. The discharge (sodiation) capacity amounts to about 400 mAh g⁻¹ or 3.7 Na/Sb, which corresponds to the bulk reaction (Na-ion insertion into Cu₂Sb as much as 3 Na/Sb expected) and the surface reactions discussed above. The charge voltage profiles are virtually identical with a large plateau around 0.75 V and a small slope near 0.9 V. The charge (desodiation) capacity measured on a thick electrode (3 μm) is equal to about 250 mAh g⁻¹ or 2.3 Na/Sb. This indicates that either full sodiation did not occur during discharge or that some Na is trapped inside in the material. Since the structural characterization data (XRD, XAS, Mössbauer spectroscopy, see next) support the occurrence of full sodiation, we suppose that the lower reversible storage capacity results from the absence of full desodiation due to diffusion limitations, in particular for thicker films. XPS data collected on Cu₂Sb¹⁵ samples show lower than expected binding energies of the Sb core levels upon desodiation consistent with the hypothesis of trapped Na.

3.2. Characterization of the Electrode Material Structure by XRD. The mechanism during the reaction with Li is first discussed to serve as a reference for the reaction with Na. During the reaction with Li, all Cu₂ atoms from the distorted octahedral sites are substituted by Li atoms, which leads to a slight displacement of the Sb atoms to form an ideal fcc cell in the form of Li_{2-2x}Cu_{1+x}Sb (0 < x < 1).^{22,23} Further insertion of Li ions takes place in the tetrahedral sites with cooperative displacement of the Cu₁ atoms to the neighboring tetrahedral site. Overall, these two steps lead to the extrusion of one Cu atom and the insertion of two Li atoms per formula unit of Cu₂Sb. The reaction thereby results in the formation of cubic Li₂CuSb (*F* $\bar{4}$ 3*m*) with significantly elongated Sb–Sb bonds and a lattice parameter of 6.27 Å.^{22,23} Li₂CuSb structure is an Sb fcc array with one Li and all Cu alternately occupying the eight tetrahedral sites and the second Li occupying the four octahedral sites. Further reaction takes place by substituting the Cu atoms remaining in the tetrahedral sites to form cubic Li₃Sb (*Fm* $\bar{3}$ *m*) with a lattice parameter of 6.56 Å. This structure is normally only obtained at high pressures but known to form electrochemically at room temperature and adopts an Sb fcc array with full occupation of the tetrahedral and octahedral sites by Li.^{22–24}

The investigation of the electrode structure at various degrees of sodiation during the first and second cycles, as marked by the red closed circles labeled A to L in Figure 2b, has been studied by XRD using Mo K α radiation. The corresponding XRD patterns are presented in Figure 3, which also includes the pattern for a pristine film. For the cycled electrodes, the broad hump at low angle originates from the Kapton material. The pristine film material is composed of nanocrystallites with broad peaks centered on the positions expected for *P4/nmm* Cu₂Sb (blue bars). The results show some preferred crystallite orientation within the thin film, as evidenced by (111) and (112) peaks at 15.9° and 19.7° that are stronger than for the reference pattern (blue bars). This analysis does not take into account that the film was measured with a fixed divergence slit, which for thin films does not respect the constant volume approximation. In fact, the amount

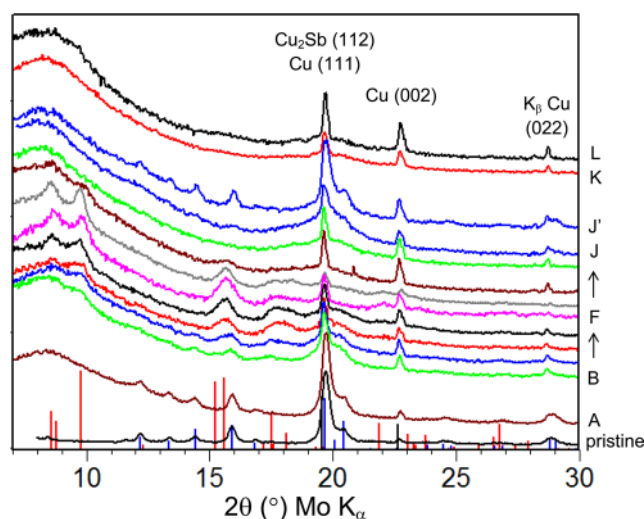


Figure 3. XRD patterns of Cu₂Sb electrodes marked in Figure 2b. Red, blue, and black bars indicate Na₃Sb, Cu₂Sb, and Cu expected diffraction lines. The overlap of Cu₂Sb (112) strongest line with the Cu (002) weak line is highlighted. Note that the Cu foil is strongly (022) preferentially oriented, which results in the presence of a K β line. For further clarity, see the magnification presented in Figure S3.

of material present in the beam at low diffraction angles can be significantly larger than at larger angles, thereby minimizing the intensity of the (111) and (121) compared to the lower angle peaks.

During discharge (Na-ion insertion), the reaction starts by the conversion of Cu₂Sb into a material with no characteristic diffraction lines (position A), such as possibly an amorphous phase (Figure 3). The reaction further progresses by the formation of nanocrystalline Na₃Sb (see lines at 8.5–10°, 15–16°, and 17.5°, positions B–D; see Figure S3 for clarity) and the absence of diffraction lines from other phases except Cu₂Sb. It is clear that the diffraction peaks of Cu₂Sb, especially those from 12° to 16°, the strong (112) peak at 19.7°, and the (020) peak at 20.4° all decrease in intensity. At point D, the diffraction lines from Cu₂Sb have almost vanished. These results suggest that Cu₂Sb has converted completely into an amorphous phase and Na₃Sb around position D. Moreover, the gradual consumption of Cu₂Sb and the concomitant formation of Na₃Sb suggest a reaction front from the surface to the bulk of the film. By comparison with the electrochemical reaction of pure Sb with Na, the formation of crystalline NaSb intermediate is not expected, and instead an amorphous phase formed¹¹ as also measured here. Further sodiation from E to F leads to the growth of the peaks associated with Na₃Sb, whereas the peaks related to Cu₂Sb are not present anymore (Figure S2). The growth of the peaks related to Na₃Sb can therefore be attributed to the sodiation of the amorphous phase.

During charge (Na-ion removal, positions G to J/J'), XRD data indicate the Na₃Sb converts into an amorphous phase as no lines due to crystalline phases are observed until point J. At position J (CCCV to 1.5 V with cutoff of C/30) the presence of very broad humps related to Cu₂Sb are observed from 13° to 16° and around 20.5°. At position J', which is an electrode prepared with a more thorough desodiation by employing a current cutoff of C/50, diffraction lines of nanocrystalline Cu₂Sb are now clearly visible. The presence of these lines demonstrates that the reaction can proceed reversibly if a deep

extraction of Na is conducted at 1.5 V and strengthens the view that full structural reversibility requires higher electrode potentials and/or longer hold times. During the second discharge, the addition of Na on the new slope centered around 0.5 V (positions K and L) results in the presence of an amorphous phase. Since the second charge is very similar to the first charge (Figure 2b), we suspect that further addition of Na from point L to 0 V results in the formation of crystalline Na_3Sb .

During the reaction of Cu_2Sb with Na, the formation of a solid solution or of a new intermediate crystalline phase is not evidenced. This is suggested by the reaction of Sb, which proceeds by the formation of an amorphous phase until hexagonal $P63/mmc$ Na_3Sb crystallizes.¹¹ Although the formation of the high-pressure cubic $Fm\bar{3}m$ Na_3Sb phase has been evidenced to a very small extent during the electrochemical reaction, it was found that the small amount of this phase transforms into the room temperature hexagonal $P63/mmc$ polymorph at full discharge.¹¹ This reaction is very different from that of Sb with Li during which hexagonal Li_2Sb forms, followed by the formation of the high-pressure cubic $Fm\bar{3}m$ Li_3Sb phase.²⁴ The analysis of these differences in reaction scheme suggests that the reaction of Cu_2Sb with Na is not likely to proceed using the same pathway as with Li. The reaction of Cu_2Sb with Li discussed earlier is essentially governed by the transformations of a compact fcc Sb array, which may explain why the reaction with Na proceeds by the formation of an amorphous phase. In summary, our results support that the reaction can be written as $\text{Cu}_2\text{Sb} + 3\text{Na} \leftrightarrow \text{Na}_3\text{Sb} + 2\text{Cu}$ via the formation of an intermediate amorphous Na–Cu–Sb phase of varying Na content possibly coexisting with extruded Cu. The local atomic structure of the electrode material is discussed next.

3.3. Local Atomic Environment of the (Dis)charged Electrode Materials. The discussion of the local environment of Sb atoms in Cu_2Sb , Sb, and Na_3Sb phases is important, as it will serve as a basis for the forthcoming discussion of the local atomic structure of the electrodes measured by XAS and Mössbauer spectroscopy. Figure 4 presents the first and second neighbors of Sb atoms for (a) Sb ($R\bar{3}m$), (b) Cu_2Sb ($P4/nmm$), and (c) Na_3Sb ($P63/mmc$) with additional projections given in Figure S4. The corresponding interatomic distances are listed in Table S1. The first coordination shell in pure Sb is composed of a distorted octahedron with 3 Sb atoms ~ 2.90 Å and 3 Sb atoms ~ 3.36 Å. The second coordination shell is composed of 12 Sb atoms with 6 atoms ~ 4.31 Å and the other 6 atoms ~ 4.51 Å. In the case of Cu_2Sb , the Sb atoms are 9-fold coordinated by Cu atoms positioned from 2.63 to 2.84 Å. The second coordination shell is composed of 1 Cu atom ~ 3.48 Å, 4 Sb atoms ~ 3.74 Å, and 4 Sb atoms ~ 4.00 Å. Hence, the Sb atoms are fairly isolated from each other in the structure, as also evident from the distorted fcc representation discussed earlier (Figure 1a). In Na_3Sb , Sb is 11-fold coordinated by Na atoms located from 3.10 to 3.48 Å with 5 atoms from 3.10 to 3.17 Å and the other 6 atoms at 3.48 Å. The second coordination shell is relatively further away with 6 Sb atoms ~ 5.37 Å and 6 Na and 6 Sb atoms at ~ 5.68 Å. In this structure, Sb atoms are significantly isolated.

The atomic environment of Cu was probed using XAS at the Cu K-edge and Sb K-edge. XANES at the Cu K-edge of Cu_2Sb thin film electrodes (Figure 5a), along with the Cu_2Sb powder and Cu foil standards, are discussed next. The inset shows a magnified region around the step edge. Qualitatively, it appears

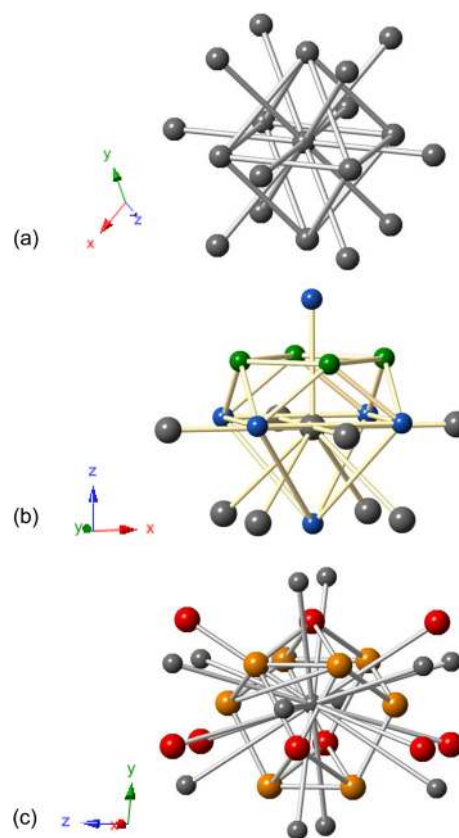


Figure 4. Schematic representations of the atomic surrounding of Sb in (a) $R\bar{3}m$ Sb, (b) $P4/nmm$ Cu_2Sb , and (c) $P63/mmc$ Na_3Sb structures. The Sb-centered first neighbors' polyhedra are depicted with second neighbors. Atoms are represented by green (Cu1), blue (Cu2), gray (Sb), red (Na1), and orange (Na2) spheres. See Figure S1 for a different view.

that the spectra of the pristine film and electrode charged at 1 V are nearly identical to the Cu_2Sb powder. Comparing the spectra in greater detail over the entire range indicates that the pristine film is essentially identical to the powder while the film charged at 1 V shows quantitative deviations at 8990, 9000, and 9022 eV as well as a small shift in the edge position toward lower photon energy. The changes above the edge are likely changes in the EXAFS oscillations resulting from small structural changes. The shift of the edge toward lower photon energy indicates a small reduction in oxidation state of the Cu compared to pure Cu_2Sb . For the electrode discharged at 0 V, a feature at low photon energy similar to the Cu foil is measured. At higher energies, the spectrum lies in between that of Cu_2Sb and Cu, suggesting that the electrode material might contain regions of $\text{Na}_x\text{Cu}_{2-y}\text{Sb}$ and metallic Cu.

The Fourier transform of the k^3 -weighted EXAFS at the Cu K-edge for the same samples is shown in Figure 5b. As in XANES, EXAFS of the pristine film is virtually identical to the Cu_2Sb powder. The results of the fit confirm that the pristine film has essentially the same structural parameters as the Cu_2Sb powder over the first three nearest neighbors (Table S2). The electrode discharged at 0 V closely resembles the Cu foil although the number of Cu nearest neighbors is significantly smaller in this film (6.7 ± 0.5) compared to bulk Cu (12). The smaller coordination number indicates that the average Cu particle/domain size is very small (few nanometers), which could be expected from a displacement/extrusion reaction of

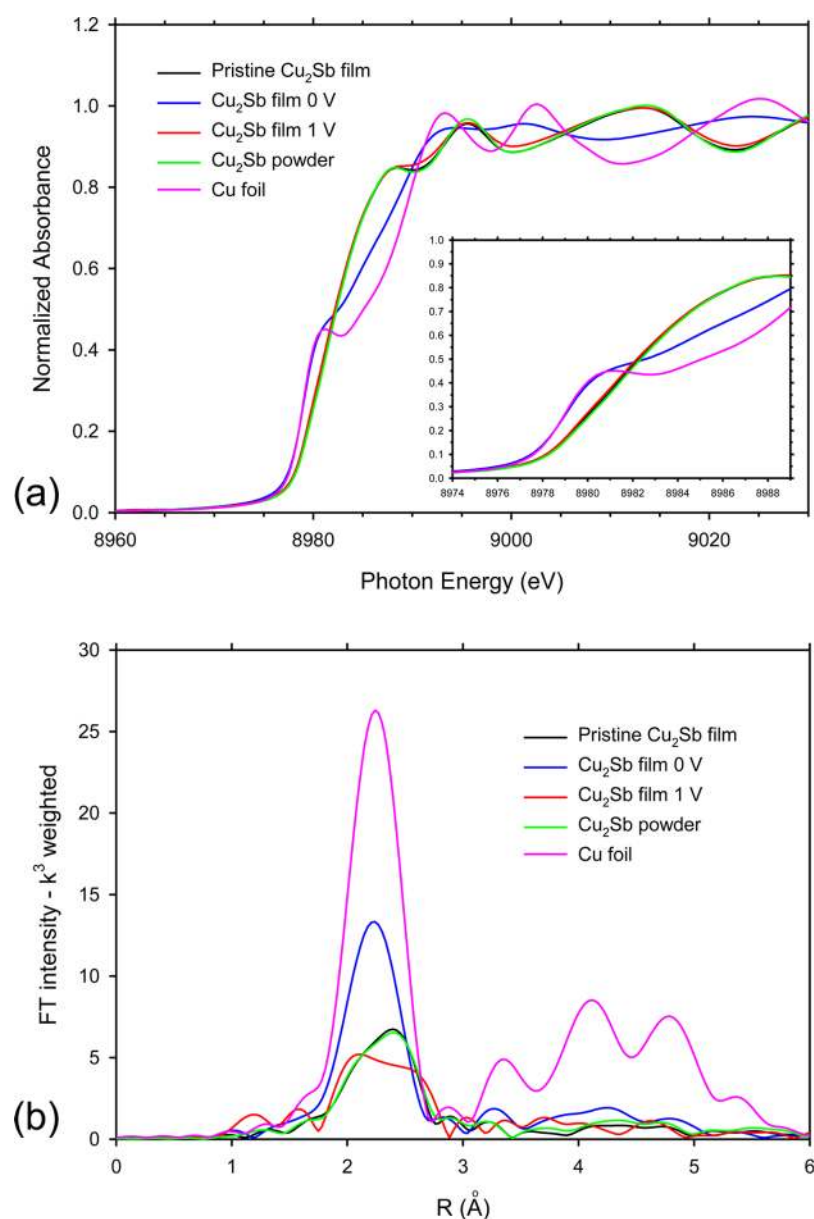


Figure 5. Cu K-edge (a) XANES and (b) EXAFS data for the pristine Cu_2Sb thin film and powder, electrode thin films discharged at 0 V and charged at 1 V, and for Cu foil. The radial distance reported in (b) is not corrected for the phase shift.

Cu by Na at the atomic level. Inclusion of scattering paths contained in Cu_2Sb did not improve the fit and/or were physically unrealistic (e.g., negative amplitudes or unrealistic nearest-neighbor distances). The EXAFS data collected for the electrode charged at 1 V look significantly different from either Cu_2Sb or metallic Cu. The Fourier transform of the EXAFS data is skewed toward low R compared to larger R in the Cu_2Sb powder. The results of the fit indicate generally smaller coordination numbers, but the ratio is essentially the same as in the Cu_2Sb powder. Note that the R -factor is significantly worse than in any of the other samples analyzed, which suggests that the structure might not be adequately captured by modeling using environments of either Cu_2Sb or metallic Cu and highlight the role of the remaining Na at 1 V creating a disordered structure.

The Sb K-edge for the Cu_2Sb thin film electrodes along with the Cu_2Sb , Sb, and Na_3Sb powder standards are discussed next (Figure 6 and Figure S5). The XANES (Figure S5) provides

little information as the changes in valence electronic density on the K-shell electron density can be expected to be very small. For this reason, the Sb environment was also studied with ^{121}Sb Mössbauer spectroscopy (Figure 7), which is sensitive to electron density variation in the tens of neV .²⁵ The FT of the EXAFS data for the pristine Cu_2Sb film and powder are fairly close to that measured for the electrode discharged at 2 V (Figure 6). At 0 V there is an important change, compared to the other materials, where the structure has little backscattering at small interatomic distances. The weak backscattering is likely due to the absence of Sb backscatterers at distances below 5 \AA (Table S3), as also found for the Na_3Sb reference powder. The low atomic number of Na compared to the energy of more than 30 keV may explain why it does not significantly contribute to the signal at low interatomic distances. The Cu K-edge XAS results support the formation of pure Cu, and overall the XAS results at both K edges converge to explain the formation of Na_3Sb domains.

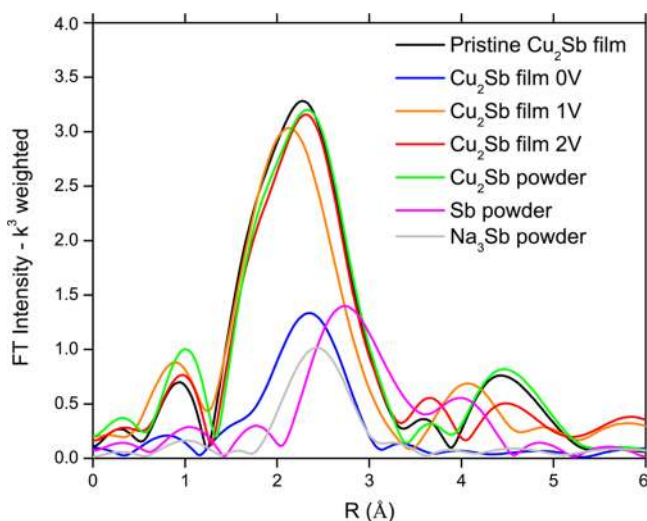


Figure 6. Sb K-edge EXAFS data for the pristine Cu_2Sb thin film and powder, electrode thin films discharged at 0 V and charged at 2 V, and for Sb and Na_3Sb powders. The radial distance is not corrected for the phase shift.

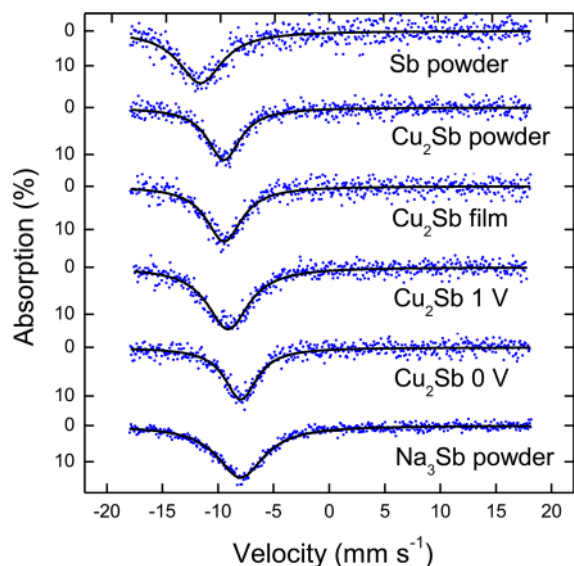


Figure 7. ^{121}Sb Mössbauer spectroscopy data for Sb powder, Cu_2Sb powder, Cu_2Sb thin film, electrode thin film charged at 1 V and discharged at 0 V, and Na_3Sb reference powder.

The local atomic ordering for the electrode at 1 V is significantly different than that at 2 V, as also found with Cu K-edge data. This is evident from the significantly larger R and Debye–Waller factors and interatomic distances compared to the pristine or charged electrode (Table S3). These results further highlight that the presence of remaining Na in the structure has a profound impact on the local ordering, which leads to the presence of a disordered structure measured as an amorphous phase by XRD (Figure 3b).

The chemical environment of Sb atoms has been further investigated using ^{121}Sb Mössbauer spectroscopy, which is the recoil-free resonant absorption of γ -rays. This technique measures the relative changes in electronic density at the nucleus as a result of variations in valence electron densities and thereby allows the identification of the chemical environment of the probed atom.²⁵ This technique has proved to be very

powerful at elucidating the reaction mechanism of various Sb-based anodes for Li-ion batteries.²⁶ The spectra for the cycled electrodes as well as for a variety of reference materials including phase pure Na_3Sb (Figure S6) are presented in Figure 7 with corresponding isomer shift values provided in Table 1.

Table 1. ^{121}Sb Mössbauer Isomer Shift (δ) Measured for the Various Cu_2Sb Electrodes and Reference Materials

sample	δ (mm s^{-1})	sample	δ (mm s^{-1})
Sb powder	-11.85 ± 0.06	Cu_2Sb 1 V	-9.29 ± 0.04
Cu_2Sb powder	-9.67 ± 0.04	Cu_2Sb 0 V	-8.10 ± 0.04
Cu_2Sb film	-9.65 ± 0.05	Na_3Sb powder	-7.95 ± 0.03

The isomer shift of the starting Cu_2Sb powder (-9.67 mm s^{-1}) is in fairly good agreement with the value of -9.2 mm s^{-1} predicted by Sharma et al. using density functional theory calculations.²⁷ They also reported a predicted value of -8.2 mm s^{-1} for InSb, which is rather close to the experimental value of -8.6 mm s^{-1} ,²⁸ and in both cases the predictions slightly overestimate the experimental isomer shift values by about 0.4 mm s^{-1} . The isomer shift of Cu_2Sb is much more positive than that of our Sb powder (-11.85 mm s^{-1}) or of SnSb (-10.5 mm s^{-1})²⁸ but is more negative than the values reported for other Sb intermetallics such as AlSb, GaSb, InSb, and CdSb characterized by isomer shifts from -7.8 to -8.6 mm s^{-1} .²⁸ For ^{121}Sb Mössbauer spectroscopy, the increasing (decreasing) isomer shift reflects a decrease (increase) in the Sb electron density at the nucleus. The electron density is dependent on the numbers of 5s and 5p electrons and generally increases with the increase of 5s electrons and with the decrease of 5p electrons.²⁸ For Cu_2Sb , it is clear that the isomer shift is less positive than those for the M–Sb intermetallics of In, Cd, Ga, and Al, especially Al, which can be related to the larger electronegativity of Cu (1.90), using Pauling's scale for example, compared to In (1.78), Ga (1.81), Cd (1.69), and Al (1.61). Conversely, the more positive isomer shift of Cu_2Sb compared to SnSb or Sb can be associated with the larger electronegativity of Sn (1.96) and Sb (2.05) compared to Cu. As Sb is the most electronegative element in this series, alloying with an atom of lower electronegativity will result in a higher number of effective valence electrons overall. As such, the electronic configuration of Sb ($5s = 1.91/5p = 3.09$, formally $5s = 2/5p = 3$), effectively changes with an increase of the 5p electrons but a decrease of the 5s electrons²⁸ and leads to the variety of isomer shifts discussed above.

The thin film material created by sputtering the powder target is characterized by a spectrum with an isomer shift (-9.65 mm s^{-1}) quasi-identical to that of the powder, which confirms that the local atomic ordering of the film is similar to that of the powder. This result further supports the findings from the other characterizations. After a discharge to 0 V and a charge at 1 V, a spectrum characterized by an isomer shift of -9.29 mm s^{-1} is measured, which is fairly close to that of the pristine material (-9.65 mm s^{-1}). The difference of about 0.35 mm s^{-1} can be related to the absence of full desodiation due to the use of the charge cutoff of 1 V. This result is in good agreement with the XAS and XRD results that indicated a significant structural disordering of the electrode material at 1 V concomitant with the presence of an amorphous phase. At full sodiation (0 V), the spectrum is composed of a singlet with an isomer shift of -8.10 mm s^{-1} , which is very close to what is measured for the Na_3Sb reference powder (-7.95 mm s^{-1}).

The isomer shift value obtained for the Na₃Sb powder is in good agreement with the reported value of -0.67 mm s^{-1} with respect to the isomer shift of InSb,²⁹ which is equal to -7.93 mm s^{-1} assuming -8.6 mm s^{-1} for the isomer shift of InSb with respect to a BaSnO₃ source.²⁸ The slightly more negative isomer shift measured for the discharged electrodes (-8.10 mm s^{-1}) compared to Na₃Sb (-7.95 mm s^{-1}) can be related to the absence of full sodiation of the very thick films employed for the Mössbauer measurements; nonetheless, the result suggests that the final discharge product is Na₃Sb, as evidenced by XRD and XAS results.

4. CONCLUSIONS

The electrochemical performance of Cu₂Sb thin film electrodes during the reaction with Na has been revisited using FEC as an electrolyte additive. The addition of FEC is found to drastically improve the electrode capacity retention with about 250 mAh g⁻¹ retained for 200 cycles. On the other hand, the use of FEC increases the overpotentials during the first discharges, as systematically found on several other (inter)metallic anode systems. The reaction mechanism of Cu₂Sb anode has been unraveled using XRD and Cu K-edge and Sb K-edge XAS. In addition, the present paper discloses for the first time the Mössbauer isomer shift of Cu₂Sb (-9.67 mm s^{-1} vs BaSnO₃) as well as the changes in hyperfine parameters for the (dis)charged electrodes. The XRD results indicate that Cu₂Sb can undergo a fully reversible transformation into Na₃Sb via an amorphous phase. The formation of Na₃Sb domains at full discharge (0 V) is further confirmed by XAS and Mössbauer spectroscopy results with the aid of a Na₃Sb reference compound. The formation of Cu₂Sb, indicating full structural reversibility, is evidenced by XRD and XAS results when the charge is conducted up to 1.5 or 2 V with lower cutoff currents. Finally, the results demonstrate that restricting the charge voltage to 1 V results in the formation of a disordered structure (amorphous phase).

■ ASSOCIATED CONTENT

Supporting Information

Crystal structure representations, XRD, XAS, and tables with fits to the data. This material is available free of charge via the Internet at <http://pubs.acs.org>.

■ AUTHOR INFORMATION

Corresponding Authors

*E-mail loic_baggetto@yahoo.fr (L.B.).

*E-mail veithgm@ornl.gov (G.M.V.).

Notes

The authors declare no competing financial interest.

■ ACKNOWLEDGMENTS

A portion of this work (L.B., G.M.V. (synthesis, electrochemistry, XRD), R.R.U. (TEM)) was supported by the U.S. Department of Energy, Office of Basic Energy Sciences, Division of Materials Sciences and Engineering, under contract with UT-Battelle, LLC. H.Y.H., C.E.J., and J.A.J. (Mossbauer) acknowledge support from the Center for Laser Applications and the University of Tennessee Space Institute. K.J.C. and Y.S.M. (XAS) acknowledge support from the National Science Foundation under Award DMR105717. D.R.M. (XAS) was financially supported by the Division of Chemical Sciences, Geosciences, and Biosciences, Office of Basic Energy Sciences,

U.S. Department of Energy, under Contract DE-AC05-00OR22725 with Oak Ridge National Laboratory, managed and operated by UT-Battelle, LLC. XAS experiments were conducted at the National Synchrotron Light Source, Brookhaven National Laboratory, supported by the US Department of Energy, Office of Science, Office of Basic Energy Sciences, under Contract DE-AC02-98CH10886 with additional support through the Synchrotron Catalysis Consortium under Grant DE-FG02-05ER15688.

■ REFERENCES

- (1) Palomares, V.; Serras, P.; Villaluenga, I.; Hueso, K. B.; Carretero-González, J.; Rojo, T. Na-Ion Batteries, Recent Advances and Present Challenges to Become Low Cost Energy Storage Systems. *Energy Environ. Sci.* **2012**, *5*, 5884–5901.
- (2) Ellis, B. L.; Nazar, L. F. Sodium and Sodium-Ion Energy Storage Batteries. *Curr. Opin. Solid State Mater. Sci.* **2012**, *16*, 168–177.
- (3) Kim, S.-W.; Seo, D.-H.; Ma, M.; Ma, G.; Kang, K. Electrode Materials for Rechargeable Sodium-Ion Batteries: Potential Alternatives to Current Lithium-Ion Batteries. *Adv. Energy Mater.* **2012**, *2*, 710–721.
- (4) Yabuuchi, N.; Kajiyama, M.; Iwatate, J.; Nishikawa, H.; Hitomi, S.; Okuyama, R.; Yasuhiro, R.; Komaba, S. P2-type Na_x[Fe_{1/2}Mn_{1/2}]O₂ Made from Earth-Abundant Elements for Rechargeable Na Batteries. *Nat. Mater.* **2012**, *11*, 512–517.
- (5) Senguttuvan, P.; Rousse, G.; Seznec, V.; Tarascon, J.-M.; Palacin, M. R. Na₂Ti₃O₇: Lowest Voltage Ever Reported Oxide Insertion Electrode for Sodium Ion Batteries. *Chem. Mater.* **2011**, *23*, 4109–4111.
- (6) Ponrouch, A.; Marchante, E.; Courty, M.; Tarascon, J.-M.; Palacin, M. R. In Search of An Optimized Electrolyte for Na-Ion Batteries. *Energy Environ. Sci.* **2012**, *5*, 8572–8583.
- (7) Komaba, S.; Murata, W.; Ishikawa, T.; Yabuuchi, N.; Ozeki, T.; Nakayama, T.; Ogata, A.; Gotoh, K.; Fujimara, K. Electrochemical Na Insertion and Solid Electrolyte Interphase for Hard-Carbon Electrodes and Application to Na-Ion Batteries. *Adv. Funct. Mater.* **2011**, *21*, 3859–3867.
- (8) Baggetto, L.; Meisner, R. P.; Ganesh, P.; Unocic, R. R.; Jumas, J.-C.; Bridges, C. A.; Veith, G. M. Characterization of Sodium Ion Electrochemical Reaction with Tin Anodes: Experiment and Theory. *J. Power Sources* **2013**, *234*, 48–59.
- (9) Ellis, L. D.; Hatchard, T. D.; Obrovac, M. N. Reversible Insertion of Sodium in Tin. *J. Electrochem. Soc.* **2012**, *159*, A1801–A1805.
- (10) Baggetto, L.; Ganesh, P.; Sun, C.-N.; Meisner, R. A.; Zawodzinski, T. A.; Veith, G. M. Intrinsic Thermodynamic and Kinetic Properties of Sb Electrodes for Li-Ion and Na-Ion Batteries: Experiment and Theory. *J. Mater. Chem. A* **2013**, *1*, 7985–7994.
- (11) Darwiche, A.; Marino, C.; Sougrati, M. T.; Fraise, B.; Stievano, L.; Monconduit, L. Better Cycling Performances of Bulk Sb in Na-Ion Batteries Compared to Li-Ion Systems: An Unexpected Electrochemical Mechanism. *J. Am. Chem. Soc.* **2012**, *134*, 20805–20811.
- (12) Park, C.-M.; Kim, J.-H.; Kim, H.; Sohn, H.-J. Li-Alloy Based Anode Materials for Li Secondary Batteries. *Chem. Soc. Rev.* **2010**, *39*, 3115–3141.
- (13) Darwiche, A.; Sougrati, M. T.; Fraise, B.; Stievano, L.; Monconduit, L. Facile Synthesis and Long Cycle Life of SnSb as Negative Electrode Material for Na-Ion Batteries. *Electrochem. Commun.* **2013**, *32*, 18–21.
- (14) Baggetto, L.; Jumas, J.-C.; Górká, J.; Bridges, C. A.; Veith, G. M. Predictions of Particle Size and Lattice Diffusion Pathway Requirements for Sodium-Ion Anodes Using η -Cu₆Sn₅ Thin Films as a Model System. *Phys. Chem. Chem. Phys.* **2013**, *15*, 10885–10894.
- (15) Baggetto, L.; Allcorn, E.; Manthiram, A.; Veith, G. M. Cu₂Sb Thin Films as Anode for Na-Ion Batteries. *Electrochem. Commun.* **2013**, *27*, 168–171.
- (16) Nam, D.-H.; Hong, K.-S.; Lim, S.-J.; Kwon, H.-S. Electrochemical Synthesis of a Three-Dimensional Porous Sb/Cu₂Sb Anode for Na-Ion Batteries. *J. Power Sources* **2014**, *247*, 423–427.

(17) Baggetto, L.; Marszewski, M.; Górka, J.; Jaroniec, M.; Veith, G. M. AlSb Thin Films as Negative Electrodes for Li-Ion and Na-Ion Batteries. *J. Power Sources* **2013**, *243*, 699–705.

(18) Baggetto, L.; Allcorn, E.; Unocic, R. R.; Manthiram, A.; Veith, G. M. Mo_3Sb_7 as a Very Fast Anode Material for Lithium-Ion and Sodium-Ion Batteries. *J. Mater. Chem. A* **2013**, *1*, 11163–11169.

(19) Baggetto, L.; Keum, J. L.; Browning, J. F.; Veith, G. M. Germanium as Negative Electrode Material for Sodium-Ion Batteries. *Electrochem. Commun.* **2013**, *34*, 41–44.

(20) Webb, S. A.; Baggetto, L.; Bridges, C. A.; Veith, G. M. The Electrochemical Reactions of Pure Indium with Li and Na: Anomalous Electrolyte Decomposition, Benefits of FEC Additive, Phase Transitions and Electrode Performance. *J. Power Sources* **2014**, *248*, 1105–1117.

(21) Ravel, B.; Newville, M. ATHENA, ARTEMIS, HEPHAESTUS: Data Analysis for X-ray Absorption Spectroscopy Using IFEFFIT. *J. Synchrotron Radiat.* **2005**, *12*, 537–541.

(22) Fransson, L. M. L.; Vaughey, J. T.; Benedek, R.; Edström, K.; Thomas, J. O.; Thackeray, M. M. Phase Transitions in Lithiated Cu_2Sb Anodes for Lithium Batteries: an In Situ X-ray Diffraction Study. *Electrochem. Commun.* **2001**, *3*, 317–323.

(23) Morcrette, M.; Larcher, D.; Tarascon, J.-M.; Edström, K.; Vaughey, J. T.; Thackeray, M. M. Influence of Electrode Microstructure on the Reactivity of Cu_2Sb with Lithium. *Electrochim. Acta* **2007**, *52*, 5339–5345.

(24) Hewitt, K. C.; Beaulieu, L. Y.; Dahn, J. R. Electrochemistry of InSb as a Li Insertion Host: Problems and Prospects. *J. Electrochem. Soc.* **2001**, *148*, A402–A410.

(25) Dunlap, B. D.; Kalvius, G. M. In *Mössbauer Isomer Shifts*; Shenoy, G. K., Wagner, F. E., Eds.; North-Holland Publishing Company: Amsterdam, 1978; pp 18–23.

(26) Aldon, L.; Garcia, A.; Olivier-Fourcade, J.; Jumas, J.-C.; Fernández-Madrigal, F. J.; Lavela, P.; Pérez Vicente, C.; Tirado, J.-L. Lithium Insertion Mechanism in Sb-Based Electrode Materials from ^{121}Sb Mössbauer Spectrometry. *J. Power Sources* **2003**, *119–121*, 585–590.

(27) Sharma, S.; Dewhurst, J. K.; Ambrosch-Draxl, C. Lithiation of InSb and Cu_2Sb : A Theoretical Investigation. *Phys. Rev. B* **2004**, *70*, 104110.

(28) Lippens, P. E. Mössbauer Isomer Shifts of Crystalline Antimony Compounds. *Solid State Commun.* **2000**, *113*, 399–403.

(29) Kitadai, K.; Takahashi, M.; Takeda, M. ^{121}Sb Mössbauer Spectra of Alkali Metal Antimonides M_3Sb ($\text{M}_3 = \text{Na}_3, \text{K}_3, \text{Na}_2\text{K}, \text{Rb}_3$). *J. Radioanal. Nucl. Chem.* **2003**, *255*, 311–314.