

ARTICLE

Received 6 Nov 2015 | Accepted 11 Dec 2015 | Published 22 Jan 2016

DOI: 10.1038/ncomms10450

OPEN

Producing air-stable monolayers of phosphorene and their defect engineering

Jiajie Pei^{1,2,*}, Xin Gai^{3,*}, Jiong Yang¹, Xibin Wang², Zongfu Yu⁴, Duk-Yong Choi³, Barry Luther-Davies³ & Yuerui Lu¹

It has been a long-standing challenge to produce air-stable few- or monolayer samples of phosphorene because thin phosphorene films degrade rapidly in ambient conditions. Here we demonstrate a new highly controllable method for fabricating high quality, air-stable phosphorene films with a designated number of layers ranging from a few down to monolayer. Our approach involves the use of oxygen plasma dry etching to thin down thick-exfoliated phosphorene flakes, layer by layer with atomic precision. Moreover, in a stabilized phosphorene monolayer, we were able to precisely engineer defects for the first time, which led to efficient emission of photons at new frequencies in the near infrared at room temperature. In addition, we demonstrate the use of an electrostatic gate to tune the photon emission from the defects in a monolayer phosphorene. This could lead to new electronic and optoelectronic devices, such as electrically tunable, broadband near infrared lighting devices operating at room temperature.

¹Research School of Engineering, College of Engineering and Computer Science, the Australian National University, Canberra, Australian Capital Territory 2601, Australia. ²School of Mechanical Engineering, Beijing Institute of Technology, Beijing 100081, China. ³CUDOS, Laser Physics Centre, Research School of Physics and Engineering, the Australian National University, Canberra, Australian Capital Territory 2601, Australia. ⁴Department of Electrical and Computer Engineering, University of Wisconsin, Madison, Wisconsin 53706, USA. * These authors contributed equally to this work. Correspondence and requests for materials should be addressed to X.G. (email: xin.gai@anu.edu.au) or to Y.L. (email: yuerui.lu@anu.edu.au).

Phosphorene, a recently developed two-dimensional (2D) material, has attracted tremendous interest because of its unique properties, including its anisotropic nature^{1–7}; its layer-dependent direct bandgap energy^{8,9}; and its quasi-one-dimensional excitonic nature^{10,11}. These properties contrast markedly with those of other 2D materials, such as graphene¹² and monolayer transition-metal dichalcogenide semiconductors^{13–17}. In particular, a monolayer of phosphorene provides a unique 2D platform for investigating the dynamics of excitons in reduced dimensions and fundamental many-body interactions^{10,18,19}, and this could lead to many novel electronic and optoelectronic devices^{1–6,8–11}. However, these unique 2D materials are unstable and degrade very rapidly in ambient conditions^{9,19–21}. Some recent passivation techniques have been successfully used to stabilize phosphorene flakes, such as coating with Al₂O₃ by atomic layer deposition (ALD)^{22–25} and sandwich encapsulation of phosphorene between hexagonal boron nitride layers^{26–28}. However, ALD cannot be used for the passivation of a monolayer or even few-layer (< 5 layers) phosphorene samples, because such thin phosphorene layers are too unstable^{19,20,29} and are rapidly oxidized by the ALD process itself. Furthermore, the boron nitride encapsulation method requires very complicated environmental conditions and has extremely low throughput and yield^{26–28}.

Here we demonstrate a new method for controllably fabricating air-stable and high-quality phosphorene samples with a designated number of layers, through layer-by-layer thinning of thick exfoliated phosphorene flakes using oxygen plasma etching, followed by further passivation with an Al₂O₃ coating. Moreover, this fabrication technique has allowed us to precisely engineer the defects in a phosphorene monolayer, and this not only triggers new photon emissions, but also modulates the doping level in the material. In addition, the defect-induced photon emission can itself be modulated using an electric field. Our fabrication

technique is a straightforward and efficient process that opens up new avenues for the production of air-stable and high-quality few- or monolayer phosphorene samples. It makes the black phosphorus a practical material for optoelectronic device and fundamental research, while the capability of atomic scale defect engineering in phosphorene achievable by using this approach can also lead to new electronic and optoelectronic devices.

Results

Producing air-stable phosphorene. Figure 1 is the schematic showing layer-by-layer thinning of a phosphorene flake by O₂ plasma etching and the further passivation procedure used to controllably produce air-stable few- or monolayers of phosphorene. A thick phosphorene flake is firstly mechanically exfoliated onto a SiO₂/Si substrate and the sample is then treated with O₂ plasma etching (Fig. 1a). During the O₂ plasma pre-treatment process, the top layers of the phosphorene flake are oxidized to become P_xO_y, which then serves as a protective layer for the remaining phosphorene sample underneath. With further O₂ plasma etching, oxygen plasma can penetrate the P_xO_y layer and oxidize the underlying phosphorene, and this thins down the phosphorene layer and also increases the thickness of the P_xO_y. Meanwhile, the O₂ plasma physically sputters away the P_xO_y layer from the top because of the collisions by oxygen plasma. After the plasma pre-treatment, a dynamic equilibrium is reached between oxidation of the phosphorene and physical removal of the P_xO_y layer, such that the P_xO_y layer approaches a constant thickness and the etching rate also becomes constant (Fig. 1b). Because of the constant etching rate, any designated number of layers of phosphorene down to a monolayer can then be precisely fabricated (Fig. 1c) and the degradation of the remaining layers is inhibited because of the protective nature of the P_xO_y. However, to further improve the durability of the phosphorene

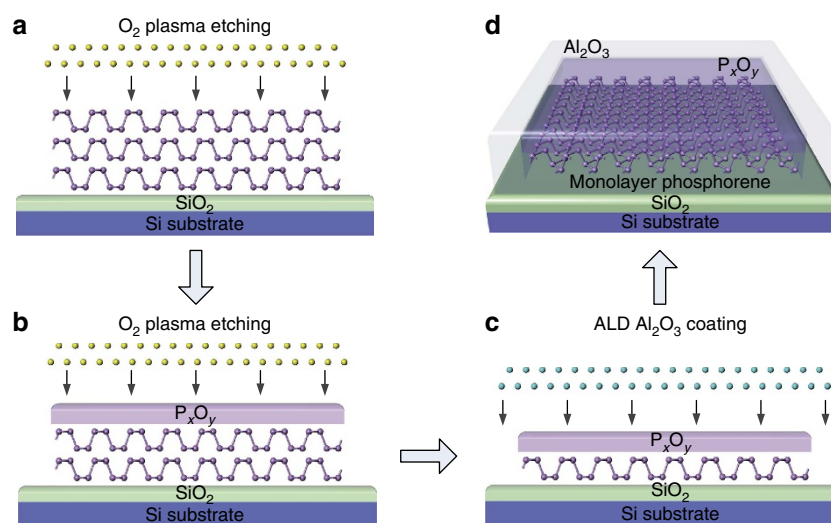


Figure 1 | Schematically showing the fabrication of air-stable mono- and few-layer phosphorene samples. (a) A thick phosphorene flake is firstly exfoliated onto a SiO₂/Si substrate and the sample is then treated with O₂ plasma etching (yellow balls). **(b)** During the O₂ plasma pre-treatment process, the top layers of the phosphorene flake are oxidized to become P_xO_y, which then serves as a protective layer for the remaining phosphorene sample underneath. With further O₂ plasma etching, oxygen plasma can penetrate the P_xO_y layer by diffusion and oxidize the underlying phosphorene, and this thins down the phosphorene layer and also increases the thickness of the P_xO_y. Meanwhile, the O₂ plasma physically sputters away the P_xO_y layer from the top because of the collisions by oxygen plasma. After the plasma pre-treatment, a dynamic equilibrium is reached between oxidation of the phosphorene and physical removal of the P_xO_y layer, such that the P_xO_y layer approaches a constant thickness and the etching rate also becomes constant. **(c)** Because of the constant etching rate, any designated number of layers of phosphorene down to a monolayer can then be precisely fabricated and the degradation of the remaining layers is inhibited because of the protective nature of the P_xO_y. **(d)** To further improve the lifetime of the phosphorene so-produced, the sample was also coated with an Al₂O₃ protective layer by ALD. In this case the P_xO_y layer prevents the underlying phosphorene from reacting with the precursor gases used in the ALD process, which is especially important for samples less than a few layers thick.

so-produced, the sample was also coated with an Al_2O_3 protective layer by ALD. In this case the P_xO_y layer prevents the underlying phosphorene from reacting with the precursor gases used in the ALD process, which is especially important for samples less than a few layers thick (Fig. 1d).

Figure 2 shows our experimental demonstration for the controllable production of few- and monolayer phosphorene samples by O_2 plasma thinning. In the experiments, after a pre-treatment of ~ 40 s by O_2 plasma, the phosphorene etching rate reached a constant value of ~ 10 s per layer. The capping

thickness of the P_xO_y layer also reached a constant value of ~ 11 nm, which was confirmed by experimental measurements (discussed later). The optical microscope images (Fig. 2a) clearly indicates the reduction of the flake contrast, as it was thinned layer-by-layer down to a monolayer. The number of the remaining layers of phosphorene was precisely measured by phase-shifting interferometry (PSI; Fig. 2b) and photoluminescence (PL) spectroscopy (Fig. 2c), which have been demonstrated to be very robust ways of determining the number of layers of exfoliated phosphorene flakes¹⁹. From Fig. 2c, the measured

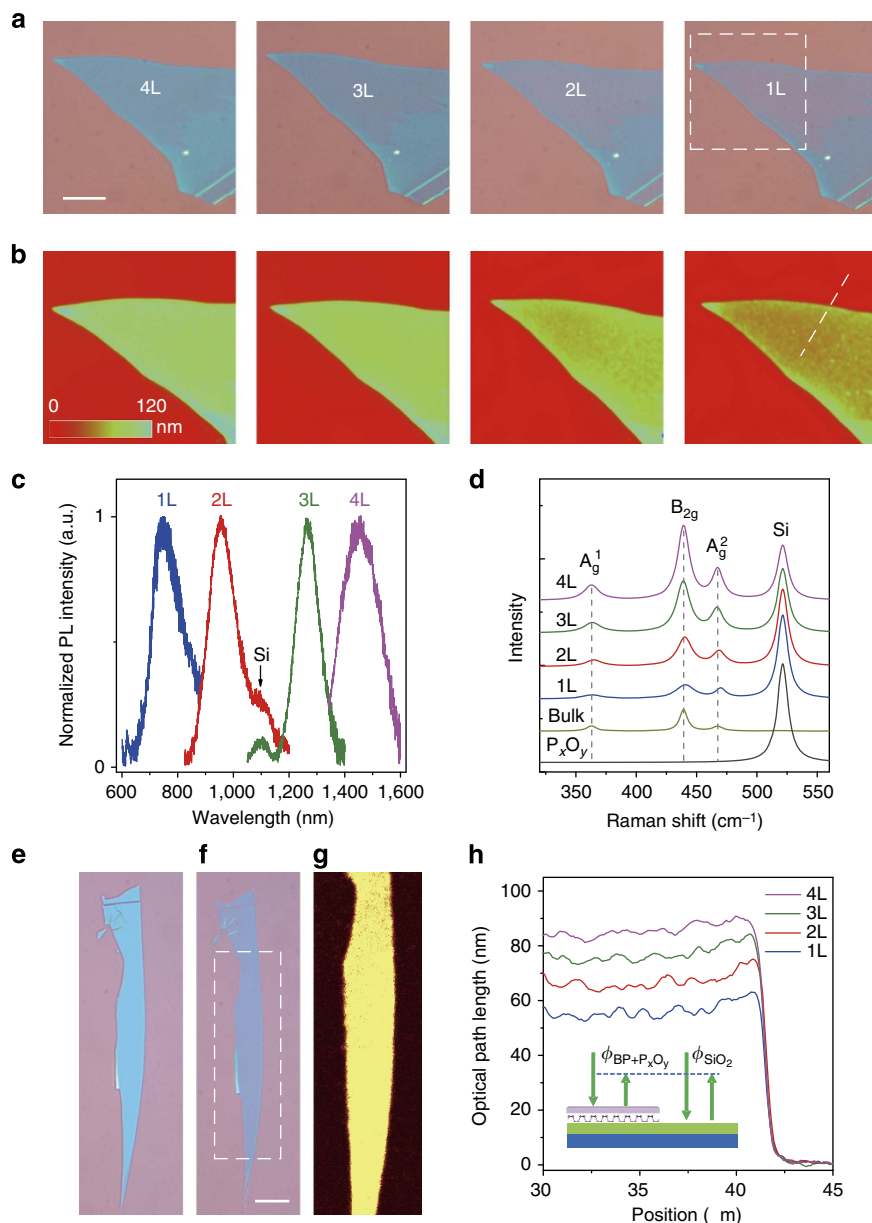


Figure 2 | Experimental demonstration of the controllable production of few- and monolayer phosphorene samples by O_2 plasma thinning.

(a,b) Optical microscope (a) and phase-shifting interferometry (PSI) (b) images of the phosphorene flake, as it was thinned layer-by-layer down to monolayer (1L). PSI images show the area marked by a dashed square in a. Scale bar, 10 μm . (c,d) Measured photoluminescence (PL) (c) and Raman (d) spectra from the thin phosphorene samples (quad- to monolayer, 4–1L), fabricated by O_2 plasma etching. Raman spectra of bulk phosphorene and pure P_xO_y are also measured and plotted for comparison. The vertical dashed lines are added as eye guidance. The excitation polarization angle was randomly selected for this Raman spectra measurement. (e–g), Uniformity characterization of the samples produced by O_2 etching; (e,f) optical microscopes of a thick phosphorene flake when it was exfoliated (e) and thinned down to 2L (f) by O_2 plasma etching. Scale bar, 10 μm . (g) Integrated PL mapping image of the area marked by a dashed rectangle in f. (h) PSI measured OPL values versus position for the plasma-produced 1L, 2L, 3L and 4L phosphorene along the dashed line in b. Inset is the schematic plot showing the PSI measured phase shifts of the reflected light from the phosphorene/ P_xO_y stack ($\phi_{\text{BP}+\text{P}_x\text{O}_y}$) and the SiO_2 substrate (ϕ_{SiO_2}).

PL spectra from the phosphorene samples between 1 and 4 layers (1–4L) thick produced by O₂ plasma etching peaked at 750, 970, 1,290 and 1,440 nm, respectively, corresponding to energies of 1.65, 1.28, 0.96 and 0.86 eV, which matches very well with our previously reported values for exfoliated phosphorene samples^{9,19}. Also, the measured Raman spectra (Fig. 2d) from 1 to 4L of phosphorene produced by O₂ plasma etching also match very well with those for mechanically exfoliated samples^{29,30}. The strongly angle-dependent responses of the A_g¹, B_{2g} and A_g² modes (Supplementary Fig. 1 and Supplementary Note 1) confirms the anisotropic puckered crystalline structure of the monolayer phosphorene samples produced by our etching method^{4,9,20,31}. Although there is no defect peak in the Raman spectra of phosphorene, the integrated intensity ratio A_g¹/A_g² reflects the oxidation-induced defect density²⁹. Pristine monolayer phosphorene²⁹ prepared in a glovebox (no oxidation) has a ratio A_g¹/A_g² of ~0.4, while partially oxidized samples have a ratio smaller than 0.2. This ratio typically becomes smaller when the sample has more oxidation-induced defects²⁹. Our monolayer phosphorene samples produced by O₂ plasma have integrated intensity ratio A_g¹/A_g² values in the range of 0.37–0.42, which is comparable to the value of the pristine monolayer phosphorene prepared in a glovebox²⁹. It further confirms the high quality of our monolayer phosphorene samples produced by O₂ plasma etching. Also, this A_g¹/A_g² ratio is not that sensitive to the polarization angle²⁹, which can also be seen from our measurements (Supplementary Fig. 1b). In addition, the integrated PL mapping image shows that the samples produced by O₂ plasma etching are extremely uniform (Fig. 2e–g). From these PL and Raman characteristics, we clearly see that the O₂ plasma etching process can produce large, high quality, single-crystalline phosphorene layers. Compared with the previously reported Ar plasma thinning technique^{30,32}, our O₂ plasma thinning process provides a huge advantage by simultaneously producing the P_xO_y capping layer, which is very critical for the following reasons: (1) the P_xO_y capping layer serves as a protective coating, on which we can add extra passivation layers such as ALD Al₂O₃ or other coatings, leading to the production of air-stable few-layer and monolayer phosphorene films (discussed later); (2) the P_xO_y capping layer also helps to reduce the etching rate to a very controllable range, which leads to a precise phosphorene/P_xO_y interface, thus preserving the high quality of the samples; (3) the P_xO_y capping layer also allows us to precisely engineer the defects in monolayer phosphorene at the atomic scale, triggering new applications in optoelectronic devices (discussed later).

We used the rapid, non-invasive and highly accurate PSI method to quantify the evolution of this important P_xO_y capping layer during the thinning process (Fig. 2b,h). Specifically, we measured the optical path length (OPL) of the light reflected from the phosphorene/P_xO_y stack. The OPL is determined as $OPL_{BP+P_xO_y} = -\frac{\lambda}{2\pi}(\phi_{BP+P_xO_y} - \phi_{SiO_2})$, where $\lambda = 535$ nm is the wavelength of the light source, and $\phi_{BP+P_xO_y}$ and ϕ_{SiO_2} are the phase shifts of the light reflected from the phosphorene/P_xO_y stack and the SiO₂/Si substrate (Fig. 2h inset), respectively. The measured average and s.d. error of the OPL values from 0, 1, 2, 3 and 4L phosphorene/P_xO_y stack samples were (42 ± 2.0), (54 ± 1.5), (64 ± 1.3), (74 ± 1.2) and (84 ± 1.2) nm, respectively (Supplementary Fig. 2), and are independent of the thickness of the initial phosphorene flake before etching. This confirms our previous model that the P_xO_y layer has constant thickness once the etching reaches the dynamic equilibrium state after the pre-treatment process. Through the theoretical fitting, the thickness of this P_xO_y capping layer was extracted to be ~11 nm, which matches well with our atomic force microscopy measurement (Supplementary Figs 2 and 3 and

Supplementary Note 2). The thickness of P_xO_y does vary slightly as a function of the plasma parameters, such as the oxygen flow rate and generator power (Supplementary Fig. 4 and Supplementary Note 3). This is because the number of the neutral species, that dominate the oxidization process, and the number of oxygen ions, that are critical for sputtering, vary at different rates as a function of generator power and flow rate. On the basis of our X-ray photoelectron spectroscopy analysis (Supplementary Fig. 5), the composition of the oxidized phosphorus capping layer is dominated by saturated-oxidized P₂O₅ rather than partially oxidized phosphorus^{33,34}. The saturated-oxidized P₂O₅ is the most stable among the phosphorus oxides (P_xO_y) indicating it should provide the best protection as a capping layer. We found that the O₂ plasma results in ‘step-wise’ etching (Supplementary Fig. 6 and Supplementary Note 4), which is related to the diffusion kinetics of oxygen in this P_xO_y capping layer³⁵. This ‘digitized’ fabrication process implies great stability and tolerance of the thinning process. In addition, the P_xO_y capping layer would not affect applications as field effect transistor devices, since the edge contact technique has been demonstrated to be an efficient way for encapsulated 2D materials³⁶.

The rapid degradation of phosphorene samples in ambient conditions, caused by the photoactivated oxidation by aqueous oxygen²⁹, has been a significant hurdle for the investigation of material properties and the exploration of device applications. Our oxygen plasma thinning technique provides an elegant way to solve this problem. The simultaneous production of the P_xO_y capping layer by O₂ plasma treatment serves as a protective layer, on which we can add extra passivation layers, such as ALD Al₂O₃ and/or other coatings, and as we show next, this leads to the production of air-stable few- and monolayers of phosphorene. In our experiments, the few- and monolayers of phosphorene capped with P_xO_y exhibited much longer lifetime than exfoliated samples in ambient conditions. We measured the time evolution of the PL intensity from phosphorene monolayer samples fabricated by different methods, as shown in Fig. 3a. In this PL tracking experiment, all the samples were exposed to air at room temperature, with the same laser excitation. The exfoliated monolayers of phosphorene only survived for ~30 min (Fig. 3a inset), which is consistent with our previous observations¹⁹. In contrast, the monolayers fabricated by O₂ plasma etching had much longer lifetime than the exfoliated samples, because the P_xO_y capping layer protects them from oxygen and moisture (Fig. 3a). However, the P_xO_y layer itself is not sufficiently robust for complete passivation, since the O₂ and moisture in the air can erode it slowly, as shown in Fig. 3b,c. Three days after it was produced, the sample with the P_xO_y capping layer started to degrade and a number of holes were found on the surface (Fig. 3c), and this was accompanied by a drop in the PL intensity (Fig. 3a). After 3 days, the degradation process accelerated and the luminescence completely disappeared after another 3 days. Therefore, an even more robust protective coating is necessary. ALD Al₂O₃ is one of the most popular passivation materials that is widely used for photonic devices³⁷ and thick phosphorene flakes^{22–24}. The Al₂O₃ ALD process cannot be directly applied to thin freshly exfoliated phosphorene layers, especially for mono- and bi-layers, because the samples are oxidized by the ALD process itself. However, we found that mono- and bi-layer phosphorene samples fabricated by O₂ plasma etching can be coated with ALD Al₂O₃ without any damage to the underlying phosphorene because of presence of the P_xO_y capping layer. For the mono- and bi-layer phosphorene samples with an extra passivation layer of 5 nm ALD Al₂O₃ on top of the P_xO_y layer, we did not observe any decay of the PL decay over 6 days (Fig. 3a) and we could still observe strong PL from those samples even

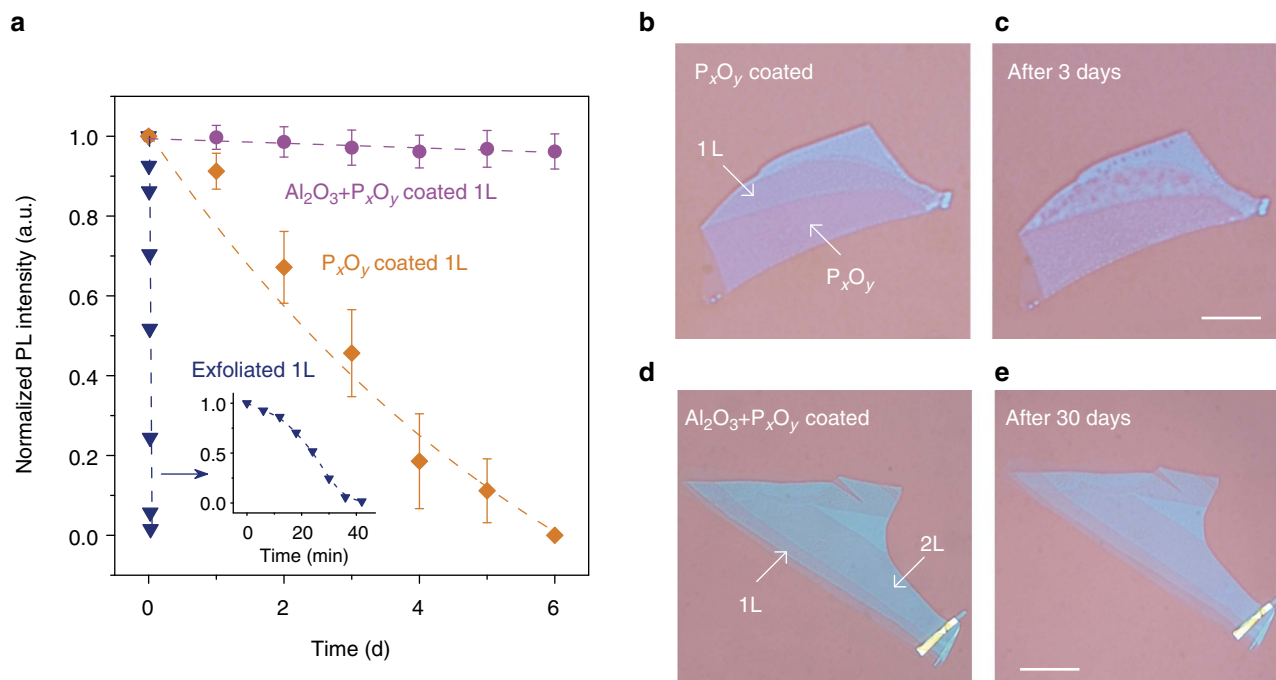


Figure 3 | Stability comparison of the phosphorene samples by different fabrication methods. (a) Time dependence of the PL intensity of the monolayer phosphorene samples by different methods: exfoliated 1L phosphorene (blue), 1L phosphorene with P_xO_y (~11 nm) capping layer produced by O₂ plasma etching (orange) and 1L phosphorene with dual passivation layers of P_xO_y and 5 nm of ALD Al₂O₃ (pink). All PL was measured in ambient condition under the same laser excitation. The maximum PL intensity is normalized to 1. The error bars represent the measurement variation from at least three different locations on the sample flake. Inset is the zoom in plot for the exfoliated 1L phosphorene sample. (b,c) Optical microscope images of a 1L phosphorene sample with P_xO_y capping layer only, when it was produced by O₂ plasma etching (b) and after 3 days (c). Scale bar, 10 μm. (d,e) Optical microscope images a phosphorene sample with two capping layers of P_xO_y and 5 nm of ALD Al₂O₃, when it was just produced by O₂ plasma etching and ALD further passivation (d) and after 30 days (e). Scale bar, 10 μm.

after 2 months (Supplementary Fig. 7). Compared with the samples capped by P_xO_y alone, those capped with dual layers of P_xO_y and Al₂O₃ have much longer lifetime and still show very clean surfaces even after 2 months in air (Supplementary Fig. 7). Of course, we could improve our current passivation technique (P_xO_y plus 5 nm of ALD Al₂O₃) to obtain even longer sample lifetime. For instance, we could use double capping layers of thick Al₂O₃ and hydrophobic fluoropolymer on top of the P_xO_y, which was demonstrated to be a very efficient way to passivate thick phosphorene flakes²⁴. Also, instead of using a SiO₂/Si substrate, we can transfer the initial thick phosphorene flake onto a hydrophobic substrate, such as hexagonal boron nitride²⁶ or a fluoropolymer²⁴, which should improve the passivation quality from the bottom side. These strategies will be pursued in future studies, but were not the focus of this work.

Defect engineering in monolayer phosphorene. Defects in semiconductors, such as vacancies and interstitials, can strongly influence transport and optical properties of the host material and such interactions become stronger in low dimensional material due to the tighter localization of the electron wave function³⁸. Understanding the functionalities of defects, and the ability to control and manipulate them with atomic precision, can improve the performance of 2D materials and lead to new applications³⁹. As predicted by previous simulation work⁴⁰, the defects in monolayer phosphorene can significantly modulate its optical and electrical properties, enabling important and new applications. However, it has been a long-standing challenge to precisely engineer the defects in monolayer phosphorene, due to its fast

degradation in ambient condition discussed earlier. Here we found that our O₂ plasma etching technique offers the opportunity to precisely engineer defects in a stabilized phosphorene monolayer for the first time. A high-quality phosphorene monolayer fabricated by O₂ plasma etching shows one PL emission peak at 750 nm, which is the same with that from a fresh exfoliated phosphorene monolayer (Fig. 4a). This peak (750 nm) is denoted as the trion (charged exciton) peak of a pristine phosphorene monolayer, in accordance with our previous research¹⁹. The phosphorene monolayer fabricated by O₂ plasma etching has a significantly higher PL intensity than the exfoliated sample in the same measurement conditions, which could be due to its high quality and its well-protected surface. Both monolayer phosphorene samples produced by exfoliation and by O₂ plasma etching (sample 1 and sample 2 in Fig. 4a) show a slightly asymmetric PL spectra profile with a low-energy tail, which is consistent with the charge-recoil effect in trion emissions⁴¹. The recombination of a trion will emit a photon and leave a free charge behind, which leads to the low-energy tail in the PL spectrum⁴¹. Please note that sample 1 was put into a Linkam THMS 600 chamber with a slow flow of N₂ gas for sample protection and the temperature was set as -10 °C also for sample protection, during the PL measurements, similar to that in our previous report¹⁹; while the PL spectra of sample 2 was measured in air at room temperature. The PL peak from sample 2 has slightly larger full width at half maximum than that from sample 1. This could be because that the full width at half maximum normally becomes larger as temperature increases due to the thermal broadening effect⁴¹.

We then introduced oxygen defects into the phosphorene monolayer, through controllable over etching with O₂ plasma.

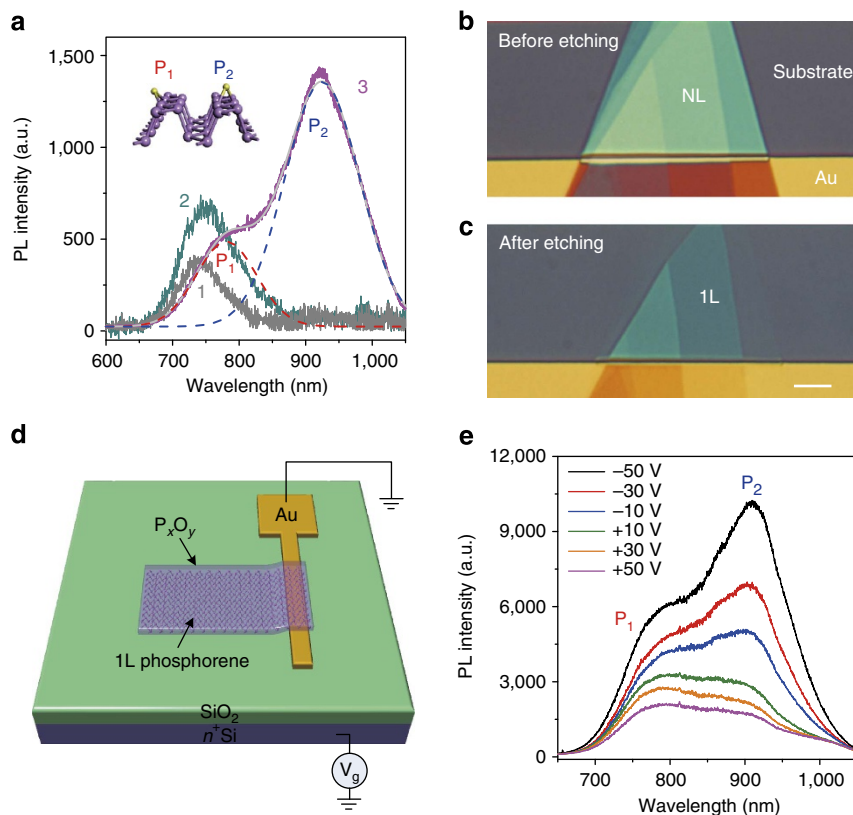


Figure 4 | Oxygen defect engineering in stabilized monolayer phosphorene. (a) Measured PL spectra of monolayer phosphorene samples produced by different methods: sample 1—exfoliated monolayer phosphorene; sample 2—monolayer phosphorene with P_xO_y capping layer fabricated by oxygen plasma etching; sample 3—monolayer phosphorene with P_xO_y capping layer fabricated by oxygen plasma etching, but with ~ 2 s' over etching by oxygen plasma compared with sample 2. The spectrum of sample 3 is fit to two Gaussian peaks labeled by P_1 and P_2 (dashed red and blue lines show the peaks at 780 and 915 nm, respectively; solid grey line is the cumulative result for the fitting). Inset is schematic plot of two different oxygen defects in monolayer phosphorene (P_1 —horizontal bridge and P_2 —diagonal bridge), which were discussed in ref. 27. (b,c) Optical microscope images showing the fabrication of a monolayer phosphorene metal—oxide—semiconductor (MOS) device, using O_2 plasma etching. An exfoliated phosphorene flake was dry transferred onto a SiO_2/Si substrate (275 nm thermal oxide on n^+ -doped silicon), in contact with a gold electrode that was pre-patterned on the substrate. Half of the phosphorene flake was on the gold electrode and the other half on the SiO_2 substrate (b). O_2 plasma etching was then used to thin down the flake to a monolayer (c). The over etching process was used to trigger the defect peaks in the so-produced monolayer phosphorene. Scale bar, 10 μm . (d) Schematic plot of the monolayer phosphorene MOS structure and the electrical measurement set up. (e) Measured PL spectra from the monolayer phosphorene in (c), under different back gate voltages from -50 to $+50$ V.

Interestingly, the over etched phosphorene monolayer shows two strong PL peaks at 780 and 915 nm, respectively: the 750 nm peak being significantly diminished. The peak at 915 nm has the highest PL intensity. To understand the origin of these two new peaks, we ran power-dependent PL measurements. The integrated PL of these two peaks grow sub-linearly with the excitation power ($\Delta = 0.54$ for 780 nm peak and $\Delta = 0.58$ for 915 nm peak, Supplementary Fig. 8), respectively, indicating that they are from localized excitons^{42,43}.

These two peaks can be attributed to the localization of excitons induced by oxygen defects, which has been predicted by numerical simulations⁴⁰. On the basis of those simulations⁴⁰, for a phosphorene monolayer, there are two bridge-type surface oxygen defects (diagonal bridge and horizontal bridge) with positive binding energies, and these may be formed if the oxygen source is more reactive than the O_2 ground state (for example, under light pumping or O_2 plasma). For a diagonal bridge defect, the oxygen atom connects phosphorus atoms on different edges of the zigzag ridge; for a horizontal bridge defect, the oxygen atom connects the phosphorus atoms from the same edge (Fig. 4a inset). Both types of surface bridge defects create levels in the bandgap. Such gap states are expected to give rise to recombination lines in luminescence experiments. On the basis

of the simulated energy diagrams for these two types of bridge defects⁴⁰, we attribute the emission peaks of 780 and 915 nm to the horizontal bridge oxygen defects and the diagonal bridge oxygen defects, respectively. Of course, those two PL peaks are broad and there might contain the contributions from other types of oxygen defects, such as dangling oxygen atoms, which has been discussed in previous simulation work⁴⁰. The measured temperature-dependent peak positions of the two PL peaks P_1 and P_2 do not follow the standard semiconductor temperature-dependence bandgap equation (Supplementary Fig. 9 and Supplementary Note 5), which could be due to potential fluctuation and band tail states that lead to exciton localization^{44–46}.

Localized exciton emissions for monolayer transition-metal dichalcogenide semiconductors can only be seen at cryogenic temperatures³⁹. In contrast, the emission from oxygen defects in a phosphorene monolayer can be clearly observed at room temperature, which could be due to their large trapping energy⁴⁰. Here we further demonstrate that the PL intensity and spectra from these defects can be tuned by an electrical gate, which could lead to new applications as electrically tunable and broadband lighting devices in the near infrared range at room temperature. In these experiments, a mechanically exfoliated

phosphorene flake was dry transferred⁴⁷ onto a SiO₂/Si substrate (275 nm thermal oxide on *n*⁺-doped silicon), in contact with a gold electrode that was pre-patterned on the substrate. Half of the phosphorene flake was on the gold electrode and the other half on the SiO₂ substrate (Fig. 4b). O₂ plasma etching was then used to thin down the flake to a monolayer (Fig. 4c), and PSI and PL spectral measurements were used to confirm the layer number (Supplementary Fig. 10). We then intentionally over etched the sample by ~2 s to induce the oxygen defects and the defect-induced PL peaks emerged. In the measurement, the gold electrode was grounded, and the *n*⁺-doped Si substrate was used as a back gate providing a uniform electrostatic doping for the phosphorene monolayer in this metal–oxide–semiconductor (MOS) structure (Fig. 4d). The measured PL spectrum was very sensitive to the electrostatic doping and can be significantly modulated by the gate voltage. Under each gate bias, the PL emission showed a broad spectrum ranging from ~750 to 950 nm which could be fitted by the two oxygen defect-induced peaks at 780 and 915 nm. As we gradually swept the back gate voltage from 50 to –50 V, the intensities of those two defect peaks at 780 and 915 nm were enhanced by a factor of 2.5 and 5.0, respectively, whilst the positions of the peaks were not sensitive to the gate voltage (Supplementary Fig. 11). The different enhancement factors for the two peaks allows us to modulate the shape of the spectrum in the near infrared. This difference in the enhancement factors could be due to the initial Fermi level in the doped phosphorene monolayer being close to the lower energy defect states⁴⁰. The PL intensity is enhanced when we inject positive charge into the sample, suggesting that the phosphorene monolayer with oxygen defects has an initial *n*-type doping. As we know, pristine phosphorene flakes have *p*-type doping owing to the initial pristine defect dopants in a bulk black phosphorus crystal^{1,11}. This means that the oxygen defect engineering process converted the phosphorene monolayer from initial *p*- to *n*-type, since oxygen dopants are *n*-type for phosphorene crystals. This oxygen defect engineering technique can lead to new electronic and optoelectronic devices, since it not only significantly influences the optical properties of a phosphorene monolayer, but can also engineer its doping.

Discussion

We were able to control the defect concentration in the phosphorene samples by controlling the over-etching time, and this allowed us to tune both the PL and Raman spectra for a phosphorene monolayer (Supplementary Fig. 12 and Supplementary Note 6). A small amount of oxidation triggered the defect PL emissions; and with further oxidation, the intensity of the defect PL peak dropped, because the monolayer phosphorene was eventually etched away (Supplementary Fig. 12a). The integrated intensity ratio A_g^1/A_g^2 dropped significantly as we increased the over etching time (Supplementary Figs 12b and c), which further confirms the relationship between the intensity ratio A_g^1/A_g^2 and the oxidation-induced defect concentration in a phosphorene monolayer²⁹.

Please note that the peak PL intensity of 1L phosphorene is normally lower than that of 2L phosphorene, for both our exfoliated samples and the samples produced by O₂ plasma etching. This might be due to that the PL spectra of 1L phosphorene was recorded by charge-coupled device (CCD) detector, while the PL spectra of 2–4L phosphorene were recorded by InGaAs detector. The optics and efficiency for those two detectors are different, which makes it hard to compare the PL intensity from 1L phosphorene with others (Supplementary Fig. 13).

In conclusion, we demonstrate a new method to controllably fabricate air-stable and high-quality phosphorene samples with a designated number of layers, from a few down to a monolayer. This technique opens new opportunities for the synthesis of high-quality phosphorene samples, enabling a wide range of fundamental research and device applications. Moreover, the stabilized phosphorene monolayer provides us with a perfect platform to precisely engineer the defects, which results in new photon emissions with high efficiency in the near infrared range at room temperature. Furthermore, we successfully used an electrostatic gate to significantly tune the defect-triggered photon emission for a phosphorene monolayer. This capability to manipulate the defects can lead to new electronic and optoelectronic devices, such as electrically tunable and broadband lighting devices in the near infrared at room temperature.

Methods

Phosphorene sample fabrication by oxygen plasma etching. A thick phosphorene flake was mechanically exfoliated to a 275-nm SiO₂/Si substrate and then the sample was treated under O₂ plasma etching by Oxford Plasmalab 100 ICP-RIE system. The O₂ plasma etching used 400 W ICP generator power, 30 W RF bias power, with 30 s.c.c.m. O₂ flow at 10 mTorr pressure. The O₂ plasma pre-treatment process took 40 s then the P_xO_y layer reached a constant thickness of ~11 nm and phosphorene etching rate also became constant at ~10 s per layer.

MOS device fabrication and characterizations. For the MOS structure, we used mechanical exfoliation to dry transfer⁴⁷ a phosphorene flake onto a SiO₂/Si substrate (275 nm thermal oxide on *n*⁺-doped silicon), with half on a pre-patterned gold electrode half on substrate. The gold electrodes were patterned by conventional photolithography, metal deposition and lift-off processes. All the OPL characterizations were obtained using a phase-shifting interferometer (Veeco NT9100). All Raman and PL spectrum measurements were conducted using a T64000 micro-Raman system equipped with a CCD and InGaAs detectors, along with a 532 nm Nd:YAG laser as the excitation source. PL spectra of 1L phosphorene was recorded by a Si CCD detector, while the PL spectra of 2–4L phosphorene were recorded by an InGaAs detector. During the PL measurements, the exfoliated phosphorene monolayer samples were put into a Linkam THMS 600 chamber with a slow flow of N₂ gas for sample protection and the temperature was set as –10 °C, similar to that in our previous report¹⁹. The PL spectra of the 1–4L phosphorene samples produced by O₂ plasma etching was measured in air at room temperature. Integrated PL mapping image (over the spectral range of 715–1095 nm) was generated using a commercial WiTec alpha300S system equipped with an avalanche photodiode in scanning confocal microscope configuration. The electrical bias was applied using a Keithley 4200 semiconductor analyzer.

Numerical simulation. The Stanford Stratified Structure Solver (S4) was used to calculate the phase delay. The method numerically solves Maxwell's equations in multiple layers of structured materials by expanding the field in the Fourier space.

References

- Liu, H. *et al.* Phosphorene: an unexplored 2D semiconductor with a high hole mobility. *ACS Nano* **8**, 4033–4041 (2014).
- Buscema, M. *et al.* Fast and broadband photoresponse of few-layer black phosphorus field-effect transistors. *Nano Lett.* **14**, 3347–3352 (2014).
- Fei, R. & Yang, L. Strain-engineering the anisotropic electrical conductance of few-layer black phosphorus. *Nano Lett.* **14**, 2884–2889 (2014).
- Xia, F., Wang, H. & Jia, Y. Rediscovering black phosphorus as an anisotropic layered material for optoelectronics and electronics. *Nat. Commun.* **5**, 4458 (2014).
- Li, L. *et al.* Black phosphorus field-effect transistors. *Nat. Nanotechnol.* **9**, 372–377 (2014).
- Hong, T. *et al.* Polarized photocurrent response in black phosphorus field-effect transistors. *Nanoscale* **6**, 8978–8983 (2014).
- Xu, R. *et al.* Layer-dependent surface potential of phosphorene and anisotropic/layer-dependent charge transfer in phosphorene-gold hybrid systems. *Nanoscale* **8**, 129–135 (2015).
- Qiao, J., Kong, X., Hu, Z.-X., Yang, F. & Ji, W. High-mobility transport anisotropy and linear dichroism in few-layer black phosphorus. *Nat. Commun.* **5**, 4475 (2014).
- Zhang, S. *et al.* Extraordinary photoluminescence and strong temperature/angle-dependent raman responses in few-layer phosphorene. *ACS Nano* **8**, 9590–9596 (2014).

10. Tran, V., Soklaski, R., Liang, Y. & Yang, L. Layer-controlled band gap and anisotropic excitons in few-layer black phosphorus. *Phys. Rev. B* **89**, 235319 (2014).
11. Zhang, S. *et al.* Extraordinarily bound quasi-one-dimensional trions in two-dimensional phosphorene atomic semiconductors, Preprint at arXiv:1411.6124v1 (2014).
12. Geim, A. K. & Novoselov, K. S. The rise of graphene. *Nat. Mater.* **6**, 183–191 (2007).
13. Radisavljevic, B., Radenovic, A., Brivio, J., Giacometti, V. & Kis, A. Single-layer MoS₂ transistors. *Nat. Nanotechnol.* **6**, 147–150 (2011).
14. Mak, K. F. *et al.* Tightly bound trions in monolayer MoS₂. *Nat. Mater.* **12**, 207–211 (2013).
15. Yang, J. *et al.* Robust Excitons and Trions in Monolayer MoTe₂. *ACS Nano* **9**, 6603–6609 (2015).
16. Pei, J. *et al.* Exciton and trion dynamics in bilayer MoS₂. *Small* **11**, 6384–6390 doi:10.1002/smll.201501949 (2015).
17. Yang, J. *et al.* Atomically thin optical lenses and gratings. Preprint at arXiv:1411.6124v1 (2014).
18. Rodin, A. S., Carvalho, A. & Castro Neto, A. H. Excitons in anisotropic two-dimensional semiconducting crystals. *Phys. Rev. B* **90**, 075429 (2014).
19. Yang, J. *et al.* Optical tuning of exciton and trion emissions in monolayer phosphorene. *Light Sci. Appl.* **4**, e312 (2015).
20. Castellanos-Gomez, A. *et al.* Isolation and characterization of few-layer black phosphorus. *2D Mater.* **1**, 025001 (2014).
21. Island, J. O., Steele, G. A., van der Zant, H. S. & Castellanos-Gomez, A. Environmental instability of few-layer black phosphorus. *2D Mater.* **2**, 011002 (2015).
22. Na, J. *et al.* Few-layer black phosphorus field-effect transistors with reduced current fluctuation. *ACS Nano* **8**, 11753–11762 (2014).
23. Wood, J. D. *et al.* Effective passivation of exfoliated black phosphorus transistors against ambient degradation. *Nano Lett.* **14**, 6964–6970 (2014).
24. Kim, J.-S. *et al.* Toward air-stable multilayer phosphorene thin-films and transistors. *Sci. Rep.* **5**, 8989 (2015).
25. Das, S., Demarteau, M. & Roelofs, A. Ambipolar phosphorene field effect transistor. *ACS Nano* **8**, 11730–11738 (2014).
26. Chen, X. *et al.* High-quality sandwiched black phosphorus heterostructure and its quantum oscillations. *Nat. Commun.* **6**, 7315 (2015).
27. Cao, Y. *et al.* Quality heterostructures from two-dimensional crystals unstable in air by their assembly in inert atmosphere. *Nano Lett.* **15**, 4914–4921 (2015).
28. Avsar, A. *et al.* Air-stable transport in graphene-contacted, fully encapsulated ultrathin black phosphorus-based field-effect transistors. *ACS Nano* **9**, 4138–4145 (2015).
29. Favron, A. *et al.* Photooxidation and quantum confinement effects in exfoliated black phosphorus. *Nat. Mater.* **14**, 826–832 (2015).
30. Lu, W. *et al.* Plasma-assisted fabrication of monolayer phosphorene and its Raman characterization. *Nano Res.* **7**, 853–859 (2014).
31. Ribeiro, H. B. *et al.* Unusual angular dependence of the Raman response in black phosphorus. *ACS Nano* **9**, 4270–4276 (2015).
32. Jia, J. *et al.* Plasma-Treated Thickness-Controlled Two-Dimensional Black Phosphorus and Its Electronic Transport Properties. *ACS Nano* **9**, 8729–8736 (2015).
33. Edmonds, M. T. *et al.* Creating a stable oxide at the surface of black phosphorus. *ACS Appl. Mater. Inter.* **7**, 14557–14562 (2015).
34. Ryan, J. Wu. *et al.* Atomic and electronic structure of exfoliated black phosphorus. *J. Vac. Sci. Technol. A* **33**, 060604 (2015).
35. Martinet, C., Devine, R. A. B. & Brunel, M. Oxidation of crystalline Si in an O₂ plasma: Growth kinetics and oxide characterization. *J. Appl. Phys.* **81**, 6996–7005 (1997).
36. Wang, L. *et al.* One-dimensional electrical contact to a two-dimensional material. *Science* **342**, 614–617 (2013).
37. Gai, X., Luther-Davies, B. & White, T. P. Photonic crystal nanocavities fabricated from chalcogenide glass fully embedded in an index-matched cladding with a high Q-factor (> 750,000). *Opt. Express* **20**, 15503–15515 (2012).
38. Yang, X. L., Guo, S. H., Chan, F. T., Wong, K. W. & Ching, W. Y. Analytic solution of a two-dimensional hydrogen atom. I. Nonrelativistic theory. *Phys. Rev. A* **43**, 1186–1196 (1991).
39. Tongay, S. *et al.* Defects activated photoluminescence in two-dimensional semiconductors: interplay between bound, charged, and free excitons. *Sci. Rep.* **3**, 2657 (2013).
40. Ziletti, A., Carvalho, A., Campbell, D. K., Coker, D. F. & Castro Neto, A. H. Oxygen Defects in Phosphorene. *Phys. Rev. Lett.* **114**, 046801 (2015).
41. Esser, A., Runge, E., Zimmermann, R. & Langbein, W. Photoluminescence and radiative lifetime of trions in GaAs quantum wells. *Phys. Rev. B* **62**, 8232–8239 (2000).
42. Shang, J. *et al.* Observation of excitonic fine structure in a 2D transition metal dichalcogenide semiconductor. *ACS nano* **9**, 647–655 (2015).
43. You, Y. *et al.* Observation of biexcitons in monolayer WSe₂. *Nat. Phys.* **11**, 477–481 (2015).
44. Fan, S. *et al.* Optical investigation of strong exciton localization in high Al composition Al_xGa_{1-x}N alloys. *Opt. Express* **21**, 24497–24503 (2013).
45. Cho, Y.-H. *et al.* “S-shaped” temperature-dependent emission shift and carrier dynamics in InGaN/GaN multiple quantum wells. *Appl. Phys. Lett.* **73**, 1370–1372 (1998).
46. Hong, C.-C., Ahn, H., Wu, C.-Y. & Gwo, S. Strong green photoluminescence from In_xGa_{1-x}N/GaN nanorod arrays. *Opt. Express* **17**, 17227–17233 (2009).
47. Castellanos-Gomez, A. *et al.* Deterministic transfer of two-dimensional materials by all-dry viscoelastic stamping. *2D Mater.* **1**, 011002 (2014).

Acknowledgements

We acknowledge the support from the Australian Research Council (ARC) Centre of Excellence for Ultrahigh Bandwidth Devices for Optical Systems (project number CE110001018), ARC Discovery project DP130100086, ARC Future Fellowship FT110100853 and ARC Discovery early career researcher award (DECRA) DE140100805. We also acknowledge financial support from the China Scholarship Council and ANU PhD Scholarship. We would like to thank Professors Hoe Tan and Dragomir Neshev from the Australian National University for the facility support.

Author contributions

X.G. proposed and designed the O₂ plasma etching method; J.P. and X.G. carried out the O₂ plasma etching experiment, ALD passivation, related PL characterizations, PSI measurements, Raman characterizations and MOS device experiment; J.P. conducted the phosphorene mechanical exfoliation; J.Y. and J.P. did the SNOM mapping, atomic force microscopy imaging and the characterizations for exfoliated monolayer phosphorene; X.G. and D.-Y.C. analyzed the O₂ plasma etching process and conducted X-ray photoelectron spectroscopy experiment; Z.Y. simulated the phase delay in PSI. Y.L. fabricated the electrode chips and designed the MOS device; J.P. processed the raw data and plotted the figure images for the manuscript; Y.L., J.P. and X.G. contributed to the data analysis and paper organization; X.G., B. L.-D., X.W. and Y.L. supervised the project; Y.L. led the work; all authors contributed to the manuscript.

Additional information

Supplementary Information accompanies this paper at <http://www.nature.com/naturecommunications>

Competing financial interests: The authors declare no competing financial interests.

Reprints and permission information is available online at <http://npg.nature.com/reprintsandpermissions/>

How to cite this article: Pei, J. *et al.* Producing air-stable monolayers of phosphorene and their defect engineering. *Nat. Commun.* **7**:10450 doi: 10.1038/ncomms10450 (2016).



This work is licensed under a Creative Commons Attribution 4.0 International License. The images or other third party material in this article are included in the article's Creative Commons license, unless indicated otherwise in the credit line; if the material is not included under the Creative Commons license, users will need to obtain permission from the license holder to reproduce the material. To view a copy of this license, visit <http://creativecommons.org/licenses/by/4.0/>