

# Prognostic significance of tumor budding and single cell invasion in gastric adenocarcinoma

Keying Che<sup>1,\*</sup>  
 Yang Zhao<sup>2,3,\*</sup>  
 Xiao Qu<sup>1</sup>  
 Zhaofei Pang<sup>1</sup>  
 Yang Ni<sup>4</sup>  
 Tiehong Zhang<sup>4</sup>  
 Jiajun Du<sup>1,5</sup>  
 Hongchang Shen<sup>4</sup>

<sup>1</sup>Institute of Oncology, Shandong Provincial Hospital Affiliated to Shandong University, Jinan,

<sup>2</sup>Department of Breast Surgery, Key Laboratory of Breast Cancer in Shanghai, Collaborative Innovation Center of Cancer Medicine, Fudan University Shanghai Cancer Center,

<sup>3</sup>Department of Oncology, Shanghai Medical College, Fudan University, Shanghai, <sup>4</sup>Department of Oncology, Shandong Provincial Hospital Affiliated to Shandong University, <sup>5</sup>Department of Thoracic Surgery, Shandong Provincial Hospital Affiliated to Shandong University, Jinan, People's Republic of China

\*These authors contributed equally to this work

**Purpose:** Gastric carcinoma (GC) is a highly aggressive cancer and one of the leading causes of cancer-related deaths worldwide. Histopathological evaluation pertaining to invasiveness is likely to provide additional information in relation to patient outcome. In this study, we aimed to evaluate the prognostic significance of tumor budding and single cell invasion in gastric adenocarcinoma.

**Materials and methods:** Hematoxylin and eosin-stained slides generated from 296 gastric adenocarcinoma patients with full clinical and pathological and follow-up information were systematically reviewed. The patients were grouped on the basis of tumor budding, single cell invasion, large cell invasion, mitotic count, and fibrosis. The association between histopathological parameters, different classification systems, and overall survival (OS) was statistically analyzed.

**Results:** Among the 296 cases that were analyzed, high-grade tumor budding was observed in 49.0% (145) of them. Single cell invasion and large cell invasion were observed in 62.8% (186) and 16.9% (50) of the cases, respectively. Following univariate analysis, patients with high-grade tumor budding had shorter OS than those with low-grade tumor budding (hazard ratio [HR]: 2.260,  $P < 0.001$ ). Similarly, the OS of patients with single cell invasion and large cell invasion was reduced (single cell invasion, HR: 3.553,  $P < 0.001$ ; large cell invasion, HR: 2.466,  $P < 0.001$ ). Following multivariate analysis, tumor budding and single cell invasion were observed to be independent risk factors for gastric adenocarcinoma ( $P < 0.05$ ). According to the Lauren classification, patients with intestinal-type adenocarcinoma had better outcomes than those with diffuse-type adenocarcinoma (HR: 2.563,  $P < 0.001$ ).

**Conclusion:** Tumor budding and single cell invasion in gastric adenocarcinoma are associated with an unfavorable prognosis.

**Keywords:** invasion type, pathology, gastric carcinoma, prognosis, metastasis

## Introduction

Gastric carcinoma (GC) is one of the five most frequently occurring cancers in both sexes worldwide. Even though the overall 5-year relative survival rate for GC has increased to 28% over the past 10 years, the mortality rate remains  $>50\%$  worldwide.<sup>1</sup> Furthermore, although early-stage patients may experience favorable results after complete resection, some patients may still suffer from metastasis and recurrence.<sup>2,3</sup> Stage II–III gastric adenocarcinoma patients are treated with multimodality therapy after surgical resection.<sup>4–6</sup> In order to facilitate optimal clinical management with more favorable outcomes, it is imperative that additional clinicopathological features are used to assess the risk of unfavorable prognosis and to identify individuals who could benefit from personalized therapy after resection. Better and more accurate

Correspondence: Jiajun Du;  
 Hongchang Shen  
 Shandong Provincial Hospital Affiliated to Shandong University, 324 Jingwu Road, Jinan 250021, People's Republic of China  
 Tel/fax +86 531 6877 7100  
 Email dujiajun568@163.com;  
 shc11312@163.com

indicators for prognosis are essential in enabling personalized medicine treatment strategies.

Histomorphological features of gastric cancer have been widely used in the evaluation of patient prognosis. Tumor budding and single cell invasion are two characteristics that have received increasing attention in relation to the invasive front of gastric cancer. Tumor budding is defined as the presence of a cluster of tumor cells, with as many as five cells per cluster at the tumor front.<sup>7</sup> Single cell invasion refers to the detachment of a single tumor cell from the primary tumor mass at the invasive margin of the tumor. Large cell invasion is defined as invasion by tumor cells whose nuclear diameters are quadruple the size of nearby small lymphocytes.<sup>8</sup> To date, tumor budding has been recognized to correlate with unfavorable outcomes in patients with many different kinds of carcinomas, including colorectal carcinoma, adenocarcinoma of the lung, laryngeal carcinoma, esophageal carcinoma, and ampullary carcinomas.<sup>9–13</sup> According to these studies, tumor budding may represent an optimal additional factor, which is helpful for risk stratification in gastric adenocarcinoma. As for the biological significance of tumor budding, investigators have noted that this process may be associated with epithelial–mesenchymal transition (EMT), thereby increasing cancer cell migration and invasion.<sup>14,15</sup> Tumor budding is considered an indicator of EMT in the tumor microenvironment. It has been suggested that cells associated with tumor budding share similar properties with malignant stem cells.<sup>16</sup> The Union for International Cancer Control (UICC) has officially recognized tumor budding as an additional independent prognostic factor in colon and rectum carcinomas.<sup>17</sup> Further studies must be performed to develop a consensus regarding the methods required to evaluate tumor budding and the relationship between these evaluation tools and prognosis in GC.

The aim of the study was to investigate the influence of different invasion types on prognosis and to identify optimal indicators for the outcome of patients with gastric adenocarcinoma.

## Materials and methods

### Selection of patients

In this study, 296 sequential gastric cancer samples were collected from Shandong Provincial Hospital (affiliated with Shandong University) between 2007 and 2010. The cases were selected sequentially. The following inclusion criteria were used: 1) patients who were pathologically diagnosed with gastric adenocarcinoma, 2) patients whose tumor slides were available for histological evaluation, and 3) patients

who had complete follow-up data. The following exclusion criteria were used: 1) patients with previous or attendant other cancers, 2) patients who underwent previous chemotherapy and/or radiation therapy before surgery, and 3) patients whose data were incomplete. All of the 296 cases were followed up for at least 5 years; the total number of cases included 69 female patients and 227 male patients (Table 1). All of the histological slides pertaining to these patients were available for histological evaluation. The tumor subtypes were defined according to the World Health Organization (WHO), Lauren and Goseki classifications.<sup>18–20</sup> The cases were staged according to the Seventh Edition of the American Joint Committee on Cancer manual.<sup>21</sup> The clinicopathological characteristics that were assessed included age, sex, tumor–node–metastasis (TNM) classification, pathological stages, degree of tumor differentiation, and smoking or drinking history.

### Ethics statement

The Ethics Committee of Shandong Provincial Hospital approved the study. All of the participants provided written informed consent. All clinical investigations were conducted according to the principles in the Declaration of Helsinki.

### Histopathological evaluation

Histological subtypes of GC were evaluated according to the following three different but commonly used criteria: the WHO classification, the Lauren classification, and the Goseki classification.<sup>18–20</sup> Each case was evaluated for tumor budding, single cell invasion, large cell invasion, fibrosis, and mitosis. All of the slides were first evaluated at 100× magnification (10× objective lens) to determine the most invasive area. Next, samples were examined at 400× magnification (40× objective lens). Tumor budding was defined as the presence of small discrete clusters of tumor cells (up to five cells) at the invasive edge or inside the tumor (Figure 1A, 100×, and Figure 1B, 400×). An average of five served as the cut-point of budding in 10 high power fields (HPFs).<sup>22</sup> High-grade tumor budding was assigned to those cases with  $\geq 5$  buds on average. Low-grade tumor budding pertained to those cases that contained, on average,  $< 5$  buds. Single cell invasion was defined as a single tumor cell within the stromal tissue at the invasive margin of the tumor (Figure 1C). Large cell invasion was defined as invasion by tumor cells whose nuclear diameter was quadruple that of small nearby lymphocytes (Figure 1D). Mitosis was assessed using the cut-point of 10 HPF at 400× magnification. The average rate of mitosis in 10 HPF is shown in Figure 1E. Fibrosis was evaluated in the 100× magnification area, and

**Table 1** Associations between invasion types and clinicopathological characteristics of 296 patients with gastric adenocarcinoma

Variables	Tumor budding			Single cell invasion			Large cell invasion		
	(-)	(+)	P-value	(-)	(+)	P-value	(-)	(+)	P-value
Age (years)			0.362			0.690			0.164
≤60	67 (22.6%)	72 (24.3%)		50 (16.9%)	89 (30.1%)		120 (40.5%)	19 (6.4%)	
>60	84 (28.4%)	73 (24.7%)		60 (20.3%)	97 (32.8%)		126 (42.6%)	31 (10.5%)	
Sex			0.441			0.640			0.180
Male	113 (38.2%)	114 (38.5%)		86 (29.1%)	141 (47.6%)		185 (62.5%)	42 (14.2%)	
Female	38 (12.8%)	31 (10.5%)		24 (8.1%)	45 (15.2%)		61 (20.6%)	8 (2.7%)	
T classification			<0.001			<0.001			0.005
T1 + T2	63 (21.3%)	21 (7.1%)		55 (18.6%)	29 (9.8%)		78 (26.4%)	6 (2.0%)	
T3 + T4	88 (29.7%)	124 (41.9%)		55 (18.6%)	157 (53.0%)		168 (56.8%)	44 (14.9%)	
N classification			<0.001			<0.001			0.002
N0	66 (22.3%)	31 (10.5%)		60 (20.3%)	37 (12.5%)		90 (30.4%)	7 (2.4%)	
N1 + N2 + N3	85 (28.7%)	114 (38.5%)		50 (16.9%)	149 (50.3%)		156 (52.7%)	43 (14.5%)	
M classification			0.005			0.001			<0.001
M0	127 (42.9%)	102 (34.5%)		97 (32.8%)	132 (44.6%)		201 (67.9%)	28 (9.5%)	
M1	24 (8.1%)	43 (14.5%)		13 (4.4%)	54 (18.2%)		45 (15.2%)	22 (7.4%)	
Pathological stage			<0.001			<0.001			0.003
Stage I + II	77 (26.0%)	30 (10.1%)		68 (23.0%)	39 (13.2%)		98 (33.1%)	9 (3.0%)	
Stage III + IV	74 (25.0%)	115 (38.9%)		42 (14.2%)	147 (49.7%)		148 (50.0%)	41 (13.9%)	
Tumor differentiation degree			<0.001			<0.001			0.075
Grade I + I-II	76 (25.7%)	123 (41.6%)		52 (17.6%)	147 (49.7%)		160 (54.1%)	39 (13.2%)	
Grade II + III	75 (25.3%)	22 (7.4%)		58 (19.6%)	39 (13.2%)		86 (29.1%)	11 (3.7%)	
Tumor budding						<0.001			<0.001
(-)	-	-		96 (32.4%)	55 (18.6%)		137 (46.3%)	14 (4.7%)	
(+)	-	-		14 (4.7%)	131 (44.3%)		109 (36.8%)	36 (12.2%)	
Large cell invasion			<0.001			0.001			
(-)	137 (46.3%)	109 (36.8%)		102 (34.5%)	144 (48.6%)		-	-	
(+)	14 (4.7%)	36 (12.2%)		8 (2.7%)	42 (14.2%)		-	-	
Single cell invasion			<0.001						0.001
(-)	96 (32.4%)	14 (4.7%)		-	-		102 (34.5%)	8 (2.7%)	
(+)	55 (18.6%)	131 (44.3%)		-	-		144 (48.6%)	42 (14.2%)	
Fibrosis			0.098			0.321			0.022
(+)	63 (21.3%)	69 (23.3%)		47 (15.9%)	85 (28.7%)		103 (34.8%)	29 (9.8%)	
(++)	53 (17.9%)	55 (18.6%)		38 (12.8%)	70 (23.6%)		92 (31.1%)	16 (5.4%)	
(+++)	35 (11.8%)	21 (7.1%)		25 (8.4%)	31 (10.5%)		51 (17.2%)	5 (1.7%)	
Mitosis			<0.001			<0.001			<0.001
(-)	100 (33.8%)	42 (14.2%)		83 (28.0%)	59 (19.9%)		133 (44.9%)	9 (3.0%)	
(+)	51 (17.2%)	103 (34.8%)		27 (9.1%)	127 (42.9%)		113 (38.2%)	41 (13.9%)	
Smoking or drinking history			0.993			0.300			0.688
Yes	52 (17.6%)	50 (16.9%)		42 (14.2%)	60 (20.3%)		86 (29.1%)	16 (5.4%)	
No	99 (33.4%)	95 (32.1%)		68 (23.0%)	126 (42.6%)		160 (54.1%)	34 (11.5%)	

**Notes:** Degree of tumor differentiation: grade I, poorly differentiated; grade II, moderately and poorly differentiated; grade III, moderately differentiated; IV, well differentiated.  $P < 0.05$  was considered significant.

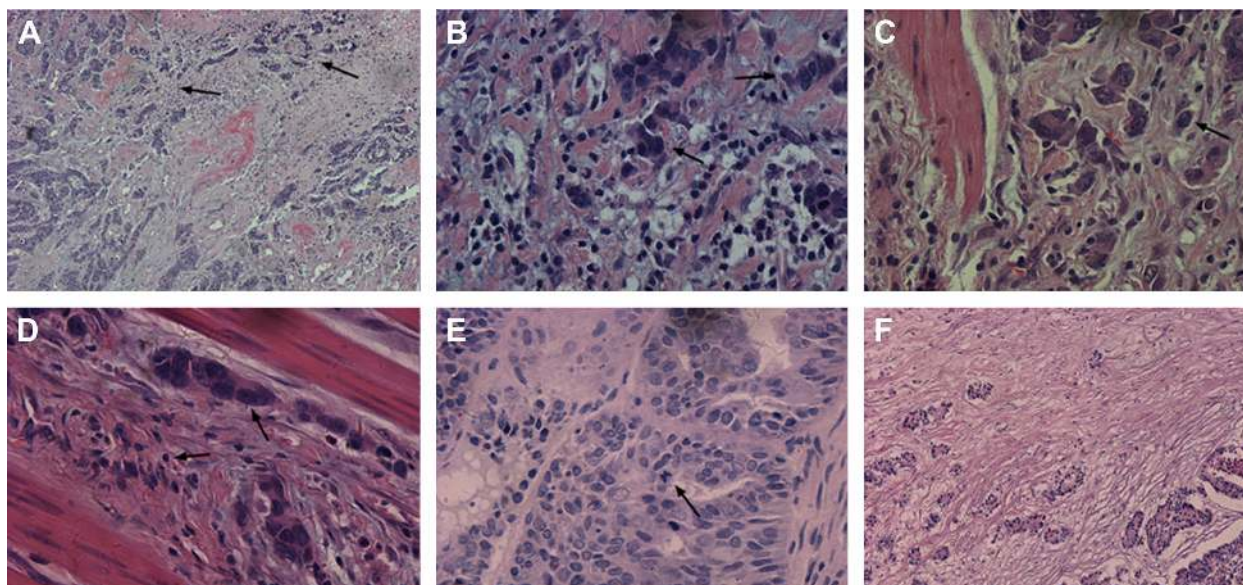
**Abbreviations:** T, tumor; N, node; M, metastasis.

a fibrosis rate of <30% was considered “+”, 30%–60% as “++”, and >60% as “+++” (Figure 1F). All of the slides were initially scanned at 100× magnification and then assessed at 400× magnification for accuracy.

## Statistical analysis

Overall survival (OS) was measured from the date of the first definite diagnosis or the date of surgery until the date of death from any cause or the date at which the patient was last

known to be alive. Patients with an unknown date of death and patients who died from causes not related to cancer were excluded from this study. Two category comparisons were performed using the chi-square test and Fisher’s exact test. Survival curves were plotted according to the Kaplan–Meier method and compared using the log-rank test in a univariate analysis. All of the tests were two sided, and  $P$ -values <0.05 were considered statistically significant. Multivariate analyses using Cox proportional hazards regression model were



**Figure 1** Microscopic observations for gastric adenocarcinoma (HE stain).

**Notes:** (A) Tumor budding (arrows) was defined as a cluster of tumor cells composed of fewer than five tumor cells and was evaluated at 100× magnification. (B) Tumor budding (arrows) evaluated at 400× magnification. (C) Single cell invasion indicated by arrows at 400× magnification. (D) Large cell invasion was defined as a tumor cell whose nucleus diameter was quadruple the size of a small nearby lymphocyte. Indicated by arrows at 400× magnification. (E) Mitosis indicated by arrows at 400× magnification. (F) Fibrosis was confirmed if the area of fibrosis was >60% of the microscopic field. Evaluated at 100× magnification.

**Abbreviation:** HE, hematoxylin and eosin.

performed to determine factors that were independently associated with OS. Statistical analysis was performed using SPSS statistics software version 20.0.

## Results

### Associations between invasion types and clinicopathological characteristics

In this study, 296 patients with gastric adenocarcinoma were assessed. The majority of these patients were male (76.9%). The association between invasion type and clinicopathological characteristics for the 296 patients with gastric adenocarcinoma is summarized in Table 1. The age of the patients ranged from 23 to 83 years, and the average age was 60 years. Among the analyzed patients, high-grade tumor budding was observed in 49.0% (145) of the cases. Single cell and large cell invasion incidences were observed in 62.8% (186) and 16.9% (50) of the cases, respectively. In this study, 36.1% (107) of the patients had stage I or II disease, and 63.9% (189) of the patients had stage III and IV diseases. Among them, 67.2% (199) of the cases were poorly differentiated or moderately and poorly differentiated, and 32.8% (97) cases were moderately or well differentiated. Tumor budding, single cell invasion, and large cell invasion were independent of age, sex, and smoking or drinking history ( $P>0.05$ ). However, the types of invasion were found to significantly correlate with TNM classification, pathological stage, and

mitosis ( $P<0.05$ ). Tumor budding and single cell invasion were significantly associated with the degree of tumor differentiation ( $P<0.05$ ). A weak association was found between large cell invasion and fibrosis ( $P=0.022$ ).

### Survival analysis

The univariate analysis of clinical and pathological characteristics is summarized in Table 2. Age, TNM classification, pathological stage, tumor budding, large cell invasion, single cell invasion, mitosis, WHO classification, Lauren classification, Goseki classification, and pathological classification showed statistical significance ( $P<0.05$ ). Apparently, patients with high-grade tumor budding had shorter OS than those with low-grade tumor budding (hazard ratio [HR]: 2.260, 95% confidence interval [CI]: 1.617–3.159,  $P<0.001$ ; Figure 2A). Similarly, the OS of patients exhibiting single cell invasion and large cell invasion was reduced (single cell invasion, HR: 3.553, 95% CI: 2.349–5.374,  $P<0.001$ , Figure 2B; large cell invasion, HR: 2.466, 95% CI: 1.700–3.578,  $P<0.001$ ; Figure 2C). Patients whose mitotic counts were >10 HPF at 400× magnification had poor prognosis (HR: 1.419, 95% CI: 1.022–1.971,  $P=0.037$ ; Figure 2D). According to the WHO classification, papillary GC served as the reference, and only the HR of tubular adenocarcinoma showed statistical significance (HR: 0.440, 95% CI: 0.267–0.726,  $P=0.001$ ; Figure 3A). According to

**Table 2** Univariate Cox regression analysis of clinical and pathological characteristics

Variables	HR	95% CI	P-value
Age (years)			
≤60	1.000	Reference	–
>60	1.556	1.116–2.168	0.009
Sex			
Male	1.000	Reference	–
Female	0.746	0.497–1.121	0.159
T classification			
T1	1.000	Reference	<0.001
T2	5.162	1.471–18.117	0.010
T3	10.607	3.320–33.886	<0.001
T4	15.324	4.823–48.683	<0.001
N classification			
N0	1.000	Reference	<0.001
N1	2.700	1.417–5.147	0.003
N2	4.234	2.426–7.390	<0.001
N3	6.233	3.750–10.360	<0.001
M classification			
M0	1.000	Reference	–
M1	2.844	2.027–3.989	<0.001
Pathological stage			
Stage I	1.000	Reference	<0.001
Stage II	2.767	0.961–7.964	0.059
Stage III	10.972	4.432–27.163	<0.001
Stage IV	16.701	6.666–41.845	<0.001
Tumor differentiation degree			
Grade I	1.000	Reference	0.110
Grades I–II	0.729	0.484–1.095	0.128
Grade II	0.690	0.470–1.014	0.059
Grade III	0.228	0.032–1.640	0.142
Tumor budding			
(–)	1.000	Reference	–
(+)	2.260	1.617–3.159	<0.001
Large cell invasion			
(–)	1.000	Reference	–
(+)	2.466	1.700–3.578	<0.001
Single cell invasion			
(–)	1.000	Reference	–
(+)	3.553	2.349–5.374	<0.001
Fibrosis			
(+)	1.000	Reference	–
(++)	0.767	0.538–1.092	0.141
(+++)	0.517	0.315–0.848	0.009
Mitosis			
(–)	1.000	Reference	–
(+)	1.419	1.022–1.971	0.037
Smoking or drinking history			
No	1.000	Reference	–
Yes	1.350	0.969–1.881	0.076
WHO classification			
Papillary gastric carcinoma	1.000	Reference	0.013
Tubular adenocarcinoma	0.440	0.267–0.726	0.001
Mucinous gastric carcinoma	0.863	0.475–1.567	0.628
Signet ring cell carcinoma	0.748	0.404–1.382	0.353
Low-differentiated adenocarcinoma	0.844	0.485–1.470	0.550
Undifferentiated adenocarcinoma	1.158	1.158–0.739	0.523

(Continued)

**Table 2** (Continued)

Variables	HR	95% CI	P-value
Lauren classification			
Intestinal type	1.000	Reference	–
Diffuse type	2.563	1.789–3.673	<0.001
Goseki classification			
I	1.000	Reference	<0.001
II	1.890	1.093–3.267	0.023
III	2.634	1.684–4.119	<0.001
IV	2.202	1.350–3.594	0.002
Pathological classification			
I	1.000	Reference	–
II	2.820	1.568–5.071	0.001
III	3.907	2.375–6.425	<0.001
IV	6.028	3.345–10.865	<0.001

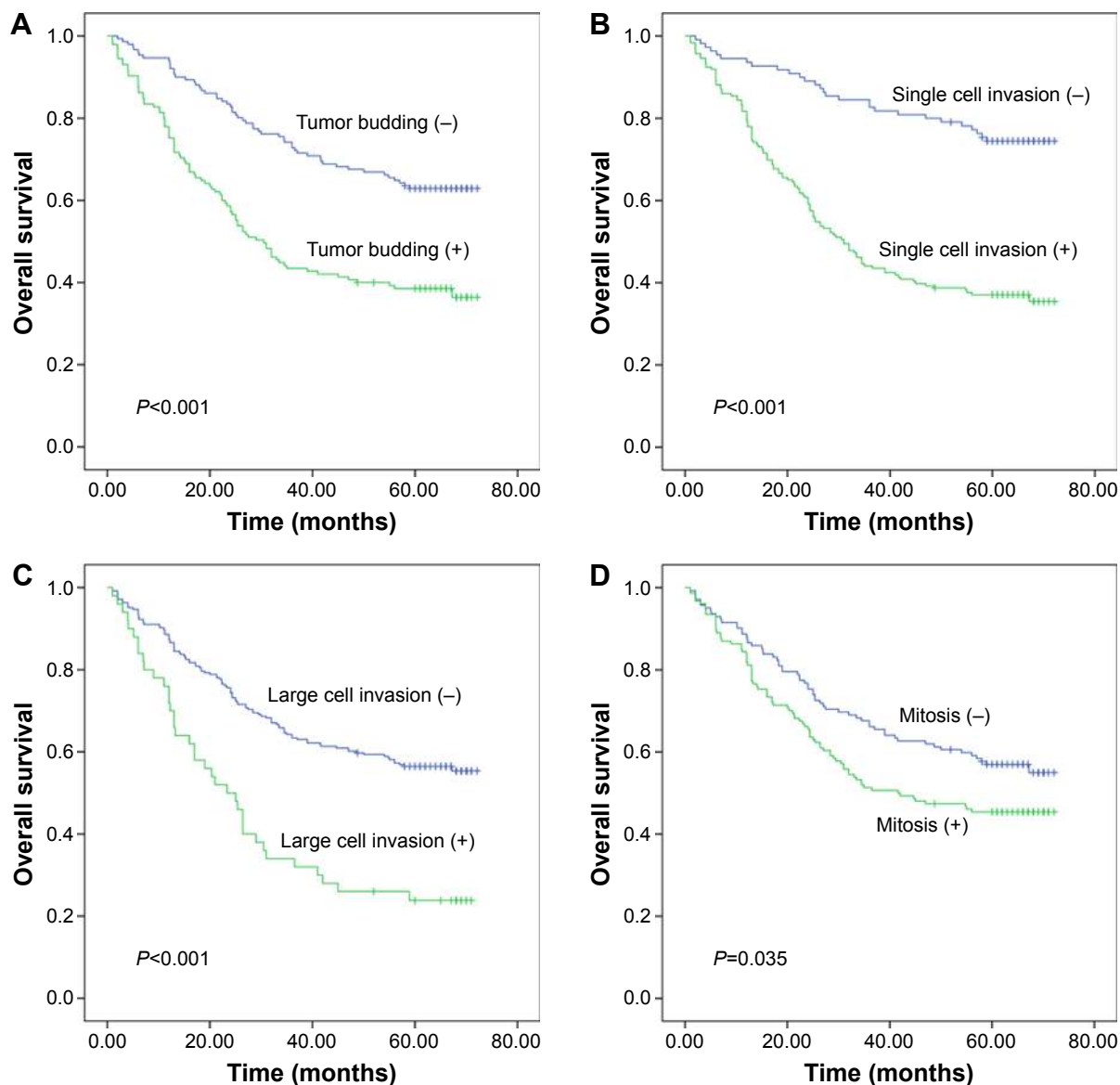
**Abbreviations:** CI, confidence interval; HR, hazard ratio; WHO, World Health Organization; T, tumor; N, node; M, metastasis.

Goseki classification, grades II, III, and IV had HR values of 1.890 (95% CI: 1.093–3.267,  $P=0.023$ ), 2.634 (95% CI: 1.684–4.119,  $P<0.001$ ), and 2.202 (95% CI: 1.350–3.594,  $P=0.002$ ), respectively. Patients with well-differentiated grades I and II had higher survival rates than those with poorly differentiated grades III and IV (Figure 3C). As in a previous study, diffuse-type patients had unfavorable prognosis (HR: 2.563, 95% CI: 1.789–3.673,  $P<0.001$ ; Figure 3B).<sup>23</sup> We observed that patients with the following classification profile (referred to as the “pathological classification” subsequently) were the most suitable for this study: I: patients without tumor budding, single cell invasion, or large cell invasion. II: patients with single cell invasion. III: patients with tumor budding and single cell invasion. IV: patients with tumor budding, single cell invasion, and large cell invasion. The HR values of II, III, and IV were 2.820, 3.907, and 6.028, respectively, and grade I has significant statistical significance with grades II, III, and IV ( $P=0.001$ ,  $P<0.001$ , and  $P<0.001$ ; Figure 3D).

The multivariate analysis of clinical and pathological characteristics is summarized in Table 3. Using the Cox proportional hazards model, the features that showed statistical significance following univariate analysis were further analyzed. The presence of tumor budding, single cell invasion, and large cell invasion was once more observed to unfavorably impact prognosis ( $P<0.05$ ). Of the variables that were analyzed, tumor budding, single cell invasion, and large cell invasion appeared to have independent effects on OS.

## Discussion

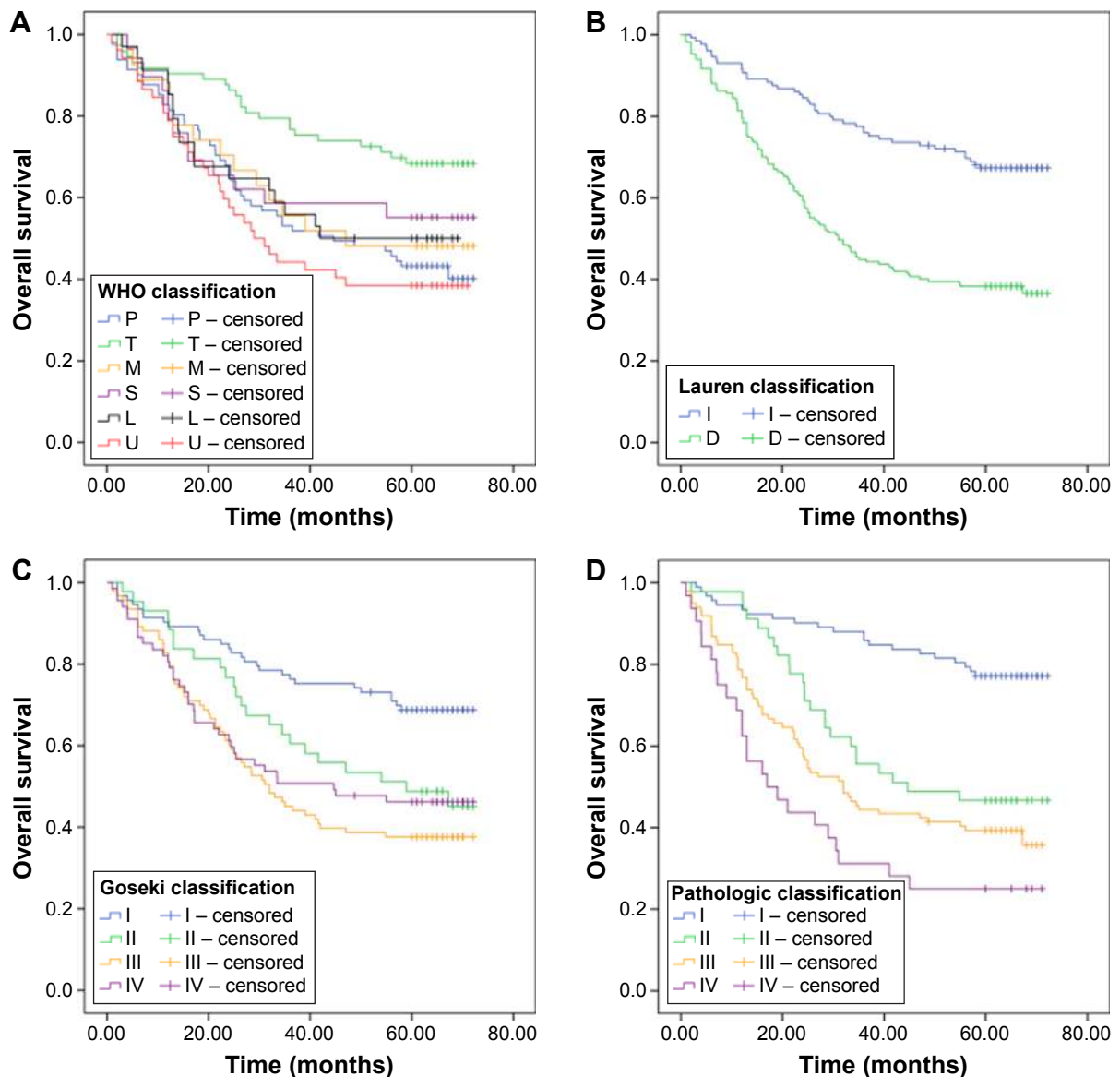
Tumor budding, single cell invasion, and large cell invasion are all important types of tumor invasion.<sup>8</sup> To date, tumor



**Figure 2** Overall survival (OS) figures pertaining to tumor budding (A), single cell invasion (B), large cell invasion (C), and mitotic count (D) in gastric adenocarcinoma. **Notes:** (A) Kaplan–Meier survival curve for tumor budding in patients with gastric adenocarcinoma. The OS of cases with high-grade tumor budding was shorter than for cases exhibiting low-grade budding ( $P < 0.001$ ). (B) Patients with single cell invasion had shorter OS compared to those without single cell invasion ( $P < 0.001$ ). (C) Patients with large cell invasion had shorter OS compared to those without large cell invasion ( $P < 0.001$ ). (D) Patients with high mitotic count had shorter OS compared to those without high mitotic count ( $P = 0.035$ ).

budding has been shown to correlate with unfavorable prognosis in many malignant carcinomas, such as colorectal cancer, pancreatic ductal adenocarcinoma, tongue squamous cell carcinoma, and gingival buccal complex squamous cell carcinoma.<sup>10,24–26</sup> However, research is urgently required to analyze tumor budding in GC. It is speculated that tumor budding may be an important indicator of outcomes, providing a diagnostic guide to facilitate individual treatment in the future. In addition, the mechanisms by which tumor budding exerts effects on the metastasis and invasiveness of tumors merit further study.

EMT is a process by which cells switch from an epithelial to a mesenchymal phenotype.<sup>27</sup> The epithelial cells develop enhanced motility and show a fibroblast-like morphology. During review of the cases pertaining to the current work, tumor budding was not only observed in the area of the invasive front, where it has been previously described, but also in the tumor itself. This discovery suggests that tumor budding is involved in the EMT that takes place when buds cross the tumor body with the help of rich tumor stroma. The finding that single cell infiltration was associated with poor prognosis is also likely to be reflective of the mechanisms



**Figure 3** Survival curves according to different classification systems in gastric adenocarcinoma.

**Notes:** (A) Kaplan–Meier survival curve of WHO classification in patients with gastric adenocarcinoma. Papillary carcinoma showed statistically significant differences with tubular carcinoma subtype ( $P=0.001$ ) but not with other subtypes (mucinous carcinoma,  $P=0.628$ ; signet ring cell carcinoma,  $P=0.353$ ; low-differentiated carcinoma,  $P=0.550$ ; and undifferentiated carcinoma,  $P=0.528$ ). P, T, M, S, L, and U represent papillary carcinoma, tubular carcinoma, mucinous carcinoma, signet ring cell carcinoma, minimally differentiated carcinoma, and undifferentiated carcinoma, respectively. (B) According to the Lauren classification, diffuse-type patients have unfavorable prognosis ( $P<0.001$ ). I and D represent intestinal-type and diffuse-type gastric adenocarcinoma, respectively. (C) According to the Goseki classification, the well-differentiated grades I and II had higher survival rates than the poorly differentiated grades III and IV. Grade I showed statistically significant differences compared with grades II, III, and IV ( $P=0.023$ ,  $P<0.001$ , and  $P=0.002$ ). I: well-differentiated and mucin-poor areas of tumor. II: well-differentiated and mucin-rich parts of the tumor. III: poorly differentiated and mucin-poor parts of the tumor. IV: poorly differentiated and mucin-rich parts of the tumor. (D) According to the new pathological classification, grade I showed statistically significant difference from grades II, III, and IV ( $P=0.001$ ,  $P<0.001$ , and  $P<0.001$ ). I: patients without tumor budding, single cell invasion, and large cell invasion. II: patients with single cell invasion. III: patients with tumor budding and single cell invasion. IV: patients with tumor budding, single cell invasion, and large cell invasion.

**Abbreviation:** WHO, World Health Organization.

that underpin metastasis. Tumor dissociation and single tumor cells may metastasize to distant organs through the lymph vessels or blood vessels. As a consequence, metastasis of malignant carcinoma can occur following mesenchymal–epithelial transition. This phenomenon may also suggest that tumor cells in buds exhibit characteristics that are synonymous with stem cells.<sup>16</sup> This is highly relevant considering

that, in the near future, developing technology may allow for an increasing number of gastric cancers to be diagnosed following preoperative biopsy of tissue that does not contain the invasive front.

In this study, we speculate that the isolated single tumor cells that were observed to be detached from the primary tumor can be regarded as anoikis-resistant cells. The single

**Table 3** Multivariate Cox regression analysis of clinical and pathological characteristics

Factors	Category	HR	95% CI	P-value
<b>Model for tumor budding</b>				
Age (years)	≤60	1.000	Reference	–
	>60	1.578	1.121–2.221	0.009
Large cell invasion	(–)	1.000	Reference	–
	(+)	1.566	1.051–2.333	0.028
Tumor budding	(–)	1.000	Reference	–
	(+)	1.568	1.044–2.354	0.030
Mitosis	(–)	1.000	Reference	–
	(+)	0.878	0.611–1.263	0.484
Pathological stage	I	1.000	Reference	–
	II	2.280	0.786–6.616	0.129
	III	8.855	3.514–22.317	<0.001
	IV	12.699	4.959–32.520	<0.001
Tumor differentiation degree	Grade I	1.000	Reference	–
	Grades I–II	0.827	0.541–1.264	0.380
	Grade II	1.146	0.726–1.810	0.557
	Grade III	0.639	0.085–4.794	0.663
<b>Model of single cell invasion</b>				
Age (years)	≤60	1.000	Reference	–
	>60	1.677	1.192–2.358	0.003
Large cell invasion	(–)	1.000	Reference	–
	(+)	1.699	1.145–2.522	0.008
Single cell invasion	(–)	1.000	Reference	–
	(+)	2.385	1.562–3.787	<0.001
Mitosis	(–)	1.000	Reference	–
	(+)	0.789	0.547–1.136	0.203
Pathological stage	I	1.000	Reference	–
	II	2.068	0.708–6.038	0.184
	III	7.237	2.846–18.401	<0.001
	IV	10.259	3.962–26.564	<0.001
Tumor differentiation degree	Grade I	1.000	Reference	–
	Grades I–II	0.802	0.530–1.215	0.298
	Grade II	1.144	0.752–1.740	0.529
	Grade III	0.712	0.095–5.354	0.741

**Abbreviations:** CI, confidence interval; HR, hazard ratio.

tumor cells exhibit similar characteristics of invasiveness and metastasis as malignant carcinoma. In normal epithelial cells, loss of cell–cell or cell–matrix interactions triggers a form of apoptosis known as anoikis, which inhibits the survival of cancer cells in circulation.<sup>28</sup> However, anoikis-resistant cells can resist anoikis and survive in the blood or lymph, finally establishing secondary tumors. These anoikis-resistant tumor cells play an important role in the complex process of tumor metastasis. One study explored the role of EMT in anoikis-resistant human lung cancer cells.<sup>29</sup> As a part of the tumor metastasis mechanism, the complex relationship between EMT and anoikis-resistance merits further exploration.

According to the results generated in the current study, histological subtypes of GC are associated with prognosis. The Lauren classification is a means of classifying biological behaviors and was proposed several decades ago. Upon

analysis using this system, we observed that patients with intestinal-type gastric cancer have more favorable outcomes than patients with diffuse-type gastric cancer (Table 2). In addition, the Goseki classification system, which is based on the differentiation and quantity of tumor cell mucus of the carcinoma, has statistical significance when it comes to predicting prognosis. The well-differentiated I and II subtypes exhibit longer OS than the III and IV subtypes with poor differentiation.<sup>20,30</sup> However, poor-mucus grade III cases have poorer prognosis compared with rich-mucus grade III cases. In this study, not all of the histological subtypes pertaining to the WHO classification displayed statistically significant differences, and tubular carcinoma resulted in better prognosis than papillary carcinoma; these findings are not consistent with the findings of a previous study.<sup>18</sup> Based on the results of this study, we observed that the WHO classification is not suitable for Asian or Chinese individuals with gastric adenocarcinoma; this is why additional classification systems were deployed during this study. Furthermore, we propose that a new set of criteria for histomorphological evaluation and classification in relation to gastric adenocarcinoma should be established to facilitate more accurate estimates. However, classification systems including Lauren classification can still be useful in estimating prognosis and guiding the choice of therapeutic regimens that are utilized. Results showed that tumor invasion types can influence the prognosis of gastric adenocarcinoma. Thus, a new histological classification system pertaining to tumor invasion types should be established to help evaluate prognosis and aid in risk stratification.

The impact of tumor invasion types in the early-stage subgroup has yet to be studied in preoperative biopsy specimens. The current study may be limited by the relatively small number of gastric adenocarcinoma patients and the fact that all cases come from a single center. However, the study benefits from complete clinical–pathological data with information regarding adjuvant therapy and follow-up. Multicenter research covering a larger number of patients should be analyzed and may provide more evidence for the significance of tumor invasion types.

## Conclusion

According to the current work, tumor budding and single cell invasion should be recognized as useful microscopic indicators that are reflective of biological activity of the tumor. These indicators will hopefully help to better stratify GC patients into subgroups, thereby leading to better clinical decision making in terms of intraoperative or postoperative treatment choices.



## Acknowledgments

The work was supported by Provincial science and technology development plan of Shandong (2015GSF118129) and National Natural Science Foundation of China (project 81301728). We are extremely grateful to all the patients and to everyone who helped complete this research successfully.

## Author contributions

All authors contributed toward data analysis, drafting and critically revising the paper and agree to be accountable for all aspects of the work.

## Disclosure

All authors report no conflicts of interest in this work.

## References

1. Siegel R, Naishadham D, Jemal A. Cancer statistics, 2013. *CA Cancer J Clin*. 2013;63(1):11–30.
2. Macdonald JS, Smalley SR, Benedetti J, et al. Chemoradiotherapy after surgery compared with surgery alone for adenocarcinoma of the stomach or gastroesophageal junction. *N Engl J Med*. 2001;345(10):725–730.
3. Ito H, Inoue H, Ikeda H, et al. Clinicopathological characteristics and treatment strategies in early gastric cancer: a retrospective cohort study. *J Exp Clin Cancer Res*. 2011;30:117.
4. Glynne-Jones R, Nilsson PJ, Aschele C, et al. Anal cancer: ESMO-ESSO-ESTRO clinical practice guidelines for diagnosis, treatment and follow-up. *Radiother Oncol*. 2014;111(3):330–339.
5. Ajani JA, Eisenberg B, Emanuel P, et al. NCCN practice guidelines for upper gastrointestinal carcinomas. *Oncology*. 1998;12(11 A):179–223.
6. Strong VE, D'Amico TA, Kleinberg L, Ajani J. Impact of the 7th edition AJCC staging classification on the NCCN clinical practice guidelines in oncology for gastric and esophageal cancers. *J Natl Compr Canc Netw*. 2013;11(1):60–66.
7. Koelzer VH, Langer R, Zlobec I, Lugli A. Tumor budding in upper gastrointestinal carcinomas. *Front Oncol*. 2014;4:216.
8. Zhao Y, Shen H, Qiu C, et al. Invasion types are associated with poor prognosis in lung squamous carcinoma patients. *Medicine*. 2015;94(43):e1634.
9. Yamaguchi Y, Ishii G, Kojima M, et al. Histopathologic features of the tumor budding in adenocarcinoma of the lung: tumor budding as an index to predict the potential aggressiveness. *J Thorac Oncol*. 2010;5(9):1361–1368.
10. Mitrovic B, Schaeffer DF, Riddell RH, Kirsch R. Tumor budding in colorectal carcinoma: time to take notice. *Mod Pathol*. 2012;25(10):1315–1325.
11. Sarioglu S, Acara C, Akman FC, et al; for Dokuz Eylül Head and Neck Tumour Group (DEHNTG). Tumor budding as a prognostic marker in laryngeal carcinoma. *Pathol Res Pract*. 2010;206(2):88–92.
12. Ohike N, Coban I, Kim GE, et al. Tumor budding as a strong prognostic indicator in invasive ampullary adenocarcinomas. *Am J Surg Pathol*. 2010;34(10):1417–1424.
13. Brown M, Sillah K, Griffiths EA, et al. Tumour budding and a low host inflammatory response are associated with a poor prognosis in oesophageal and gastro-oesophageal junction cancers. *Histopathology*. 2010;56(7):893–899.
14. De Craene B, Bex G. Regulatory networks defining EMT during cancer initiation and progression. *Nat Rev Cancer*. 2013;13(2):97–110.
15. Zlobec I, Lugli A. Epithelial mesenchymal transition and tumor budding in aggressive colorectal cancer: tumor budding as oncotarget. *Oncotarget*. 2010;1(7):651–661.
16. Brabletz T, Jung A, Spaderna S, Hlubek F, Kirchner T. Opinion: migrating cancer stem cells – an integrated concept of malignant tumour progression. *Nat Rev Cancer*. 2005;5(9):744–749.
17. Vieth M, Quirke P, Lambert R, von Karsa L, Risio M. European guidelines for quality assurance in colorectal cancer screening and diagnosis. First Edition – annotations of colorectal lesions. *Endoscopy*. 2012;44(suppl 3):Se131–Se139.
18. Flejou JF. Classification OMS 2010 des tumeurs digestives: la quatrième édition [WHO classification of digestive tumors: the fourth edition]. *Ann Pathol*. 2011;31(5 suppl):S27–S31. French.
19. Lauren P. The two histological main types of gastric carcinoma: diffuse and so-called intestinal-type carcinoma. An attempt at a histo-clinical classification. *Acta Pathol Microbiol Scand*. 1965;64:31–49.
20. Goseki N, Takizawa T, Koike M. Differences in the mode of the extension of gastric cancer classified by histological type: new histological classification of gastric carcinoma. *Gut*. 1992;33(5):606–612.
21. Edge SB, Compton CC. The American Joint Committee on Cancer: the 7th edition of the AJCC cancer staging manual and the future of TNM. *Ann Surg Oncol*. 2010;17(6):1471–1474.
22. Ueno H, Mochizuki H, Hashiguchi Y, et al. Risk factors for an adverse outcome in early invasive colorectal carcinoma. *Gastroenterology*. 2004;127(2):385–394.
23. Werner M, Becker KF, Keller G, Hofler H. Gastric adenocarcinoma: pathomorphology and molecular pathology. *J Cancer Res Clin Oncol*. 2001;127(4):207–216.
24. Wang C, Huang H, Huang Z, et al. Tumor budding correlates with poor prognosis and epithelial-mesenchymal transition in tongue squamous cell carcinoma. *J Oral Pathol Med*. 2011;40(7):545–551.
25. O'Connor K, Li-Chang HH, Kalloger SE, et al. Tumor budding is an independent adverse prognostic factor in pancreatic ductal adenocarcinoma. *Am J Surg Pathol*. 2015;39(4):472–478.
26. Manjula BV, Augustine S, Selvam S, Mohan AM. Prognostic and predictive factors in gingivo buccal complex squamous cell carcinoma: role of tumor budding and pattern of invasion. *Indian J Otolaryngol Head Neck Surg*. 2015;67(suppl 1):98–104.
27. Tanabe S, Aoyagi K, Yokozaki H, Sasaki H. Regulated genes in mesenchymal stem cells and gastric cancer. *World J Stem Cells*. 2015;7(1):208–222.
28. Liotta LA, Kohn E. Anoikis: cancer and the homeless cell. *Nature*. 2004;430(7003):973–974.
29. Winitthana T, Lawanprasert S, Chanvorachote P. Triclosan potentiates epithelial-to-mesenchymal transition in anoikis-resistant human lung cancer cells. *PLoS One*. 2014;9(10):e110851.
30. Calik M, Calik I, Demirci E, et al. Goseki grade and tumour location influence survival of patients with gastric cancer. *Asian Pac J Cancer Prev*. 2014;15(3):1429–1434.

### OncoTargets and Therapy

### Publish your work in this journal

OncoTargets and Therapy is an international, peer-reviewed, open access journal focusing on the pathological basis of all cancers, potential targets for therapy and treatment protocols employed to improve the management of cancer patients. The journal also focuses on the impact of management programs and new therapeutic agents and protocols on

Submit your manuscript here: <http://www.dovepress.com/oncotargets-and-therapy-journal>

Dovepress

patient perspectives such as quality of life, adherence and satisfaction. The manuscript management system is completely online and includes a very quick and fair peer-review system, which is all easy to use. Visit <http://www.dovepress.com/testimonials.php> to read real quotes from published authors.