

# Prognostic value of isolated nocturnal hypertension on ambulatory measurement in 8711 individuals from 10 populations

Hong-Qi Fan<sup>a</sup>, Yan Li<sup>a</sup>, Lutgarde Thijs<sup>b</sup>, Tine W. Hansen<sup>c</sup>, José Boggia<sup>d</sup>, Masahiro Kikuya<sup>e</sup>, Kristina Björklund-Bodegård<sup>f</sup>, Tom Richart<sup>b,g</sup>, Takayoshi Ohkubo<sup>e</sup>, Jørgen Jeppesen<sup>h</sup>, Christian Torp-Pedersen<sup>h</sup>, Eamon Dolan<sup>i</sup>, Tatiana Kuznetsova<sup>b,l</sup>, Katarzyna Stolarz-Skrzypek<sup>j</sup>, Valérie Tikhonoff<sup>k</sup>, Sofia Malyutina<sup>l</sup>, Edoardo Casiglia<sup>k</sup>, Yuri Nikitin<sup>l</sup>, Lars Lind<sup>f</sup>, Edgardo Sandoya<sup>m</sup>, Kalina Kawecka-Jaszcz<sup>j</sup>, Yutaka Imai<sup>e</sup>, Hans Ibsen<sup>n</sup>, Eoin O'Brien<sup>o</sup>, Jiguang Wang<sup>a</sup> and Jan A. Staessen<sup>b,g</sup>, on behalf of the International Database on Ambulatory blood pressure in relation to Cardiovascular Outcomes (IDACO) Investigators\*

**Background** We and other investigators previously reported that isolated nocturnal hypertension on ambulatory measurement (INH) clustered with cardiovascular risk factors and was associated with intermediate target organ damage. We investigated whether INH might also predict hard cardiovascular endpoints.

**Methods and results** We monitored blood pressure (BP) throughout the day and followed health outcomes in 8711 individuals randomly recruited from 10 populations (mean age 54.8 years, 47.0% women). Of these, 577 untreated individuals had INH (daytime BP <135/85 mmHg and night-time BP ≥120/70 mmHg) and 994 untreated individuals had isolated daytime hypertension on ambulatory measurement (IDH; daytime BP ≥135/85 mmHg and night-time BP <120/70 mmHg). During follow-up (median 10.7 years), 1284 deaths (501 cardiovascular) occurred and 1109 participants experienced a fatal or nonfatal cardiovascular event. In multivariable-adjusted analyses, compared with normotension ( $n = 3837$ ), INH was associated with a higher risk of total mortality (hazard ratio 1.29,  $P = 0.045$ ) and all cardiovascular events (hazard ratio 1.38,  $P = 0.037$ ). IDH was associated with increases in all cardiovascular events (hazard ratio 1.46,  $P = 0.0019$ ) and cardiac endpoints (hazard ratio 1.53,  $P = 0.0061$ ). Of 577 patients with INH, 457 were normotensive (<140/90 mmHg) on office BP measurement. Hazard ratios associated with INH with additional adjustment for office BP were 1.31 ( $P = 0.039$ ) and 1.38 ( $P = 0.044$ ) for total mortality and all cardiovascular events, respectively. After exclusion of patients with office hypertension, these hazard ratios were 1.17 ( $P = 0.31$ ) and 1.48 ( $P = 0.034$ ).

**Conclusion** INH predicts cardiovascular outcome in patients who are normotensive on office or on ambulatory daytime BP measurement. *J Hypertens* 28:2036–2045 © 2010 Wolters Kluwer Health | Lippincott Williams & Wilkins.

*Journal of Hypertension* 2010, 28:2036–2045

**Keywords:** ambulatory blood pressure, epidemiology, population science, risk factors

**Abbreviations:** BP, blood pressure; CI, confidence interval; IDACO, the International Database on Ambulatory blood pressure in relation to Cardiovascular Outcomes; IDH, isolated daytime hypertension on ambulatory measurement; INH, isolated nocturnal hypertension on ambulatory measurement

<sup>a</sup>Center for Epidemiological Studies and Clinical Trials, and Center for Vascular Evaluations, Shanghai Institute of Hypertension, Ruijin Hospital, Shanghai Jiaotong University School of Medicine, Shanghai, China, <sup>b</sup>Studies Coordinating Centre, Division of Hypertension and Cardiovascular Rehabilitation, Department of Cardiovascular Diseases, University of Leuven, Leuven, Belgium, <sup>c</sup>Research Center for Prevention and Health and Department of Clinical Physiology, Nuclear Medicine, and PET, Copenhagen University Hospital, Faculty of Health Sciences, Rigshospitalet, Copenhagen, Denmark, <sup>d</sup>Centro de Nefrologia and Departamento de Fisiopatología, Hospital de Clínicas, Universidad de la República, Montevideo, Uruguay, <sup>e</sup>Tohoku University Graduate School of Pharmaceutical Science and Medicine, Sendai, Japan, <sup>f</sup>Section of Geriatrics, Department of Public Health and Caring Sciences, Uppsala University, Uppsala, Sweden, <sup>g</sup>Department of Epidemiology, Maastricht University, Maastricht, The Netherlands, <sup>h</sup>Copenhagen University Hospital, Copenhagen, Denmark, <sup>i</sup>Cambridge University Hospitals, Addenbrookes Hospital, Cambridge, UK, <sup>j</sup>First Department of Cardiology and Hypertension, Jagiellonian University Medical College, Kraków, Poland, <sup>k</sup>Department of Clinical and Experimental Medicine, University of Padova, Padova, Italy, <sup>l</sup>Institute of Internal Medicine, Novosibirsk, Russian Federation, <sup>m</sup>Asociación Española Primera de Socorros Mutuos, Montevideo, Uruguay, <sup>n</sup>Aarhus University and Division of Cardiology, Holbak Hospital, Holbak, Denmark and <sup>o</sup>Conway Institute of Biomolecular and Biomedical Research, University College Dublin, Dublin, Ireland.

Correspondence to Jan A. Staessen, MD, PhD, FESC, FAHA, Studies Coordinating Centre, Laboratory of Hypertension, University of Leuven, Campus Sint Rafaël, Kapucijnenvoer 35, Block d, Level 00, BE-3000 Leuven, Belgium Tel: 32 16 34 7104; fax: 32 16 34 7106; e-mail: jan.staessen@med.kuleuven.be, jan.staessen@epid.unimaas.nl

Received 27 January 2010 Revised 21 April 2010  
Accepted 22 April 2010

See editorial comment on page 2000

\* The IDACO investigators are listed in Ref. [5].

## Introduction

In 2007, we described isolated nocturnal hypertension on ambulatory measurement (INH) as a potentially novel clinical entity [1]. Among 677 Chinese randomly recruited from a rural area, 74 (10.9%) had, on ambulatory monitoring, an elevated night-time blood pressure (BP) ( $\geq 120/70$  mmHg) in the presence of a normal daytime BP ( $< 135/85$  mmHg) [1]. Of the 74 patients, only four (5.4%) had hypertension on office BP measurement ( $\geq 140/90$  mmHg), which highlighted that automated BP measurement during sleep was required to diagnose INH. Along similar lines, Hoshida *et al.* [2] reported an elevated night-time BP ( $\geq 120/75$  mmHg) in the presence of a normal self-measured home BP ( $< 135/85$  mmHg) in 17 (10.3%) of 165 community-dwelling individuals. Wijkman *et al.* [3] also observed nocturnal hypertension ( $\geq 120/70$  mmHg) but a normal clinic BP ( $< 130/80$  mmHg) among 30 (7.2%) of 414 type-2 diabetic patients. In analyses of the International Database of the Ambulatory Blood Pressure [4], we noticed that the prevalence of INH was higher among South Africans of black ancestry (10.2%) and Japanese (10.9%) than in Western (6.0%) and Eastern (7.9%) Europeans [1].

In previous studies, INH was associated with clustering of cardiovascular risk factors [1], thickening of the carotid intima-media [2], left ventricular remodeling [2], and increased arterial stiffness, as reflected by aortic pulse wave velocity [1,3], the central and peripheral augmentation indexes [1], and the ambulatory arterial stiffness index [1]. However, the major question whether INH might also predict a worse cardiovascular outcome in terms of hard endpoints remains unanswered. To address this issue, we analyzed the International Database of Ambulatory blood pressure in relation to Cardiovascular Outcome (IDACO) [5–8].

## Methods

### Study population

As described in detail elsewhere [5–8], we constructed the IDACO database. Studies were eligible for inclusion, if they involved a random population sample, if baseline information on ambulatory BP and cardiovascular risk factors was available, and if the subsequent follow-up included fatal and nonfatal outcomes. Of 13 studies [9–19], we excluded two [18,19] because at the time of writing of this manuscript follow-up had not yet been organized [19] or because follow-up did not include nonfatal events [18]. All studies received ethical approval and have been reported in peer-reviewed publications.

At the time of writing of this report, the IDACO database included 11 785 individuals enrolled in prospective population studies at 11 centers [9–17]. For the present analysis, we selected studies in which all the necessary data, including ambulatory BPs, biochemical measurements, and outcome data, were available, leaving 10 cohorts [10–17] and 10 805 individuals for possible

analysis. In line with previous reports [7–8], we excluded 250 participants because they were below 18 years, and 1844 participants because they had fewer than 10 daytime or five night-time BP readings. The 8711 analyzed participants included: 1127 from Noorderkempem, Belgium [10]; 351 from the JingNing county, China [15]; 165 from Pilsen, the Czech Republic [14]; 2142 from Copenhagen, Denmark [16]; 310 from Padova, Italy [14]; 1526 from Ohasama, Japan [13]; 308 from Kraków, Poland [14]; 244 from Novosibirsk, the Russian Federation [12,14]; 1100 older men from Uppsala, Sweden [17]; and 1438 individuals from Montevideo, Uruguay [11]. All participants gave informed written consent.

### Blood pressure measurements

Conventional BP was measured by trained observers with a mercury sphygmomanometer [10,12,14–17], with validated auscultatory [13] (USM-700F; UEDA Electronic Works, Tokyo, Japan) or oscillometric [11] (OMRON HEM-705CP; Omron Corporation, Tokyo, Japan) devices, using the appropriate cuff size, with the participants in the sitting [10–16] or supine [17] position. Conventional BP was the average of two consecutive readings obtained either at the participants' homes [10–12,14,15] or at an examination center [13,16,17]. Hypertension was a conventional SBP of at least 140 mmHg or DBP of 90 mmHg at a single visit or use of antihypertensive drugs [20].

We programmed portable monitors to obtain ambulatory BP readings at 30-min intervals throughout the whole day [13] or at intervals ranging from 15 [16] to 30 [17] minutes during daytime and from 30 [16] to 60 [17] minutes at night. The devices implemented an auscultatory algorithm (Accutracker II; Suntech Medical Instruments, North Carolina, USA) in Uppsala [17] or an oscillometric technique (SpaceLabs 90202 and 90207, SpaceLabs Medical Inc., Redmond, Washington, USA; Takeda TM-2421, A&D Instruments, Tokyo, Japan; and ABPM 630, Nippon Colin, Komaki, Japan) in the other cohorts [10–16].

The same Statistical Analysis System (SAS; SAS Institute, Cary, North Carolina, USA) macro processed all ambulatory recordings, which generally stayed unedited. The Ohasama recordings were edited sparsely according to previously published criteria [21]. While accounting for the daily pattern of activities of the participants, we defined daytime as the interval from 1000 to 2000 h in Europeans [10,12,14,16,17] and South Americans [11], and from 0800 to 1800 h in Asians [13,15]. The corresponding night-time intervals ranged from midnight to 0600 h [10–12,14,16,17] and from 2200 to 0400 h [13,15], respectively. These fixed time intervals eliminate the transition periods in the morning and evening when BP changes rapidly, resulting in daytime and night-time BP levels that are within 1–2 mmHg of the awake and asleep levels [15,22]. Within individual participants, we

weighted the means of the ambulatory BP by the interval between readings.

In line with published diagnostic thresholds of ambulatory normotension [23], we defined nocturnal hypertension as a night-time BP of at least 120 mmHg SBP or 70 mmHg DBP. Daytime hypertension was a diurnal BP of at least 135 mmHg SBP or 85 mmHg DBP. On the basis of these cutoff limits of the ambulatory BP and treatment status, we classified patients into four groups: untreated individuals, who were normotensive during daytime and night-time; untreated individuals with isolated daytime hypertension on ambulatory measurement (IDH); untreated individuals with INH; and patients with hypertension sustained during daytime and night-time or on treatment for hypertension irrespective of their BP level during daytime or night-time.

### Other measurements

We used the questionnaires originally administered in each cohort to obtain information on each participant's medical history, and smoking and drinking habits. BMI was body weight in kilograms divided by height in meters squared. We measured serum cholesterol and blood glucose by automated enzymatic methods. Diabetes mellitus was the use of antidiabetic drugs, a fasting blood glucose concentration of at least 7.0 mmol/l [10–17], a random blood glucose concentration of at least 11.1 mmol/l [10,13,15], a self-reported diagnosis [10,11,13], or diabetes documented in practice or hospital records [11].

### Ascertainment of events

We ascertained vital status and the incidence of fatal and nonfatal diseases from the appropriate sources in each country, as described in previous publications [5–8]. Fatal and nonfatal stroke did not include transient ischemic attack. Coronary events encompassed death from ischemic heart disease, sudden death, nonfatal myocardial infarction (MI), and coronary revascularization. Cardiac events comprised coronary endpoints and fatal and nonfatal heart failure. The composite cardiovascular endpoint included all aforementioned endpoints and cardiovascular mortality. In all outcome analyses, we only considered the first event within each category.

### Statistical methods

For database management and statistical analysis, we used SAS software, version 9.1.3 (SAS Institute). For comparison of means and proportions, we applied the large-sample  $z$ -test and the  $\chi^2$ -statistic, respectively. After stratification for cohort and sex, we interpolated missing values of BMI ( $n=17$ ) and total serum cholesterol ( $n=121$ ) from the regression slope on age. In individuals with unknown drinking ( $n=786$ ) or smoking habits ( $n=39$ ), or with unknown status of diabetes ( $n=3$ ), we set the design variable to the cohort and

sex-specific mean of the codes (0,1). Statistical significance was an  $\alpha$ -level of less than 0.05 on two-sided tests.

We first tabulated the incidence of endpoints by BP status on ambulatory measurement. We reported crude rates and rates standardized by the direct method for cohort, sex, and age ( $\leq 40$ , 40–60, and  $\geq 60$  years). We used Kaplan–Meier survival function estimates, plotted according to current recommendations [24], and the log-rank test to compare incidence rates by BP group. We used Cox regressions to compute hazard ratios associated with each ambulatory hypertensive group relative to the normotensive group for mortality and for fatal and nonfatal outcomes combined. The hazard ratios were stratified for cohort and adjusted for sex, age (treated as a continuous variable), BMI (continuous), smoking (0, 1) and drinking (0, 1), serum cholesterol (continuous), history of cardiovascular disease (0, 1), and diabetes mellitus (0, 1). While stratifying for cohort, we pooled the cohorts recruited in the framework of the European Project on Genes in Hypertension [14]. We tested heterogeneity in the hazard ratios across subgroups by introducing the appropriate interaction term in the Cox models. To test the prognostic significance of nocturnal BP in individuals with normal daytime BP on office or on ambulatory BP measurement, we modeled the probability of the 10-year incidence of total mortality and fatal and nonfatal cardiovascular events using the Weibull distribution for time-failure data.

## Results

### Baseline characteristics

The study population consisted of 5396 Europeans (61.9%), 1877 Asians (21.6%), and 1438 South Americans (16.5%). The 8711 participants included 4096 women (47.0%) and 3532 patients with office hypertension (40.6%), of whom 1899 (53.8%) were taking BP-lowering drugs. Mean ( $\pm$ SD) age was  $54.8 \pm 15.1$  years. At enrollment, 2491 participants (28.6%) were current smokers and 4126 (47.4%) reported intake of alcohol.

Of 8711 participants, 3837 (44.1%) were normotensive during daytime and night-time, 994 (11.4%) had IDH, 577 (6.6%) had INH, and 3303 (37.9%) had sustained hypertension. Table 1 shows the baseline characteristics of the participants according to their BP status. The prevalence of INH was significantly higher ( $P < 0.05$ ) in South Americans (9.4%) than in Asians (7.2%) and Europeans (5.7%). Compared with individuals with ambulatory normotension, patients with INH were older, more likely to be men, and more frequently reported alcohol intake. They also had a higher BMI, a faster pulse rate at night, and higher serum cholesterol and blood glucose. The 577 patients with INH included 150 (26.0%) with isolated systolic hypertension, 233 (40.4%) with isolated diastolic hypertension, and 194 (33.6%) with systolic and diastolic hypertension. Of the

**Table 1** Baseline characteristics of participants

Characteristics	Normotension	Isolated nocturnal hypertension	Isolated daytime hypertension	Sustained hypertension
Number of participants	3837	577	994	3303
European	2303 (60.0)	307 (53.2) <sup>†</sup>	747 (75.2) <sup>†</sup>	2039 (61.7)
Asian	814 (21.2)	135 (23.4)	129 (12.9) <sup>†</sup>	799 (24.2) <sup>†</sup>
South American	720 (18.8)	135 (23.4) <sup>†</sup>	118 (11.9) <sup>†</sup>	465 (14.1) <sup>†</sup>
Women	2167 (56.5)	224 (38.8) <sup>‡</sup>	353 (35.5) <sup>‡</sup>	1352 (40.9) <sup>‡</sup>
Smokers	1131 (29.5)	179 (31.0)	331 (33.3) <sup>*</sup>	850 (25.7) <sup>†</sup>
Drinking alcohol	1602 (41.8)	274 (47.5) <sup>†</sup>	581 (58.5) <sup>‡</sup>	1669 (50.5) <sup>‡</sup>
Office hypertension	311 (8.1)	120 (20.8) <sup>‡</sup>	361 (36.3) <sup>‡</sup>	2740 (83.0) <sup>‡</sup>
On antihypertensive treatment	0	0	0	1899 (57.5)
Diabetes mellitus	157 (4.1)	31 (5.4)	61 (6.1) <sup>†</sup>	373 (11.3) <sup>‡</sup>
Cardiovascular disorders	168 (4.4)	37 (6.4) <sup>*</sup>	59 (5.9) <sup>*</sup>	496 (15.0) <sup>‡</sup>
Age (years)	48.5 ± 15.1	54.9 ± 15.2 <sup>‡</sup>	55.9 ± 14.0 <sup>‡</sup>	61.7 ± 11.9 <sup>‡</sup>
BMI (kg/m <sup>2</sup> )	24.4 ± 3.7	25.4 ± 4.2 <sup>‡</sup>	26.2 ± 4.0 <sup>‡</sup>	26.6 ± 4.5 <sup>‡</sup>
Conventional BP (mmHg)				
Systolic	119.4 ± 14.4	129.1 ± 15.8 <sup>‡</sup>	134.9 ± 15.7 <sup>‡</sup>	145.0 ± 19.9 <sup>‡</sup>
Diastolic	74.1 ± 9.0	78.9 ± 9.2 <sup>‡</sup>	82.4 ± 9.3 <sup>‡</sup>	86.1 ± 11.9 <sup>‡</sup>
Ambulatory measurements				
24-h SBP (mmHg)	113.8 ± 7.4	124.2 ± 6.8 <sup>‡</sup>	128.2 ± 6.3 <sup>‡</sup>	135.2 ± 14.2 <sup>‡</sup>
24-h DBP (mmHg)	68.4 ± 5.0	75.1 ± 5.1 <sup>‡</sup>	75.9 ± 5.0 <sup>‡</sup>	79.2 ± 9.1 <sup>‡</sup>
Daytime SBP (mmHg)	120.1 ± 8.4	125.1 ± 6.9 <sup>‡</sup>	139.8 ± 7.8 <sup>‡</sup>	141.1 ± 15.2 <sup>‡</sup>
Daytime DBP (mmHg)	73.5 ± 5.8	76.6 ± 5.8 <sup>‡</sup>	83.9 ± 6.3 <sup>‡</sup>	83.9 ± 10.0 <sup>‡</sup>
Daytime pulse rate (bpm)	78.6 ± 10.0	78.3 ± 10.3	79.2 ± 10.4	76.4 ± 11.2 <sup>‡</sup>
Night-time SBP (mmHg)	102.7 ± 7.8	121.1 ± 9.2 <sup>‡</sup>	109.3 ± 6.8 <sup>‡</sup>	123.9 ± 16.1 <sup>‡</sup>
Night-time DBP (mmHg)	59.3 ± 5.4	71.8 ± 6.1 <sup>‡</sup>	62.5 ± 4.6 <sup>‡</sup>	70.6 ± 9.9 <sup>‡</sup>
Night-time pulse rate (bpm)	63.3 ± 9.0	65.6 ± 10.7 <sup>‡</sup>	63.7 ± 9.3	63.6 ± 9.7
Serum cholesterol (mmol/l)	5.45 ± 1.14	5.54 ± 1.19 <sup>‡</sup>	5.87 ± 1.16 <sup>‡</sup>	5.76 ± 1.14 <sup>‡</sup>
Blood glucose (mmol/l)	4.95 ± 0.98	5.30 ± 1.69 <sup>‡</sup>	5.21 ± 1.23 <sup>‡</sup>	5.54 ± 1.68 <sup>‡</sup>

Data are means (±SD) or number (%). Office hypertension was a conventional SBP of at least 140 mmHg or DBP of 90 mmHg, or use of antihypertensive drugs. Blood glucose was available in 2905 normotensive individuals, 449 with isolated nocturnal hypertension, 855 with isolated daytime hypertension, and 2671 with sustained hypertension. Differences among the four groups were significant ( $P < 0.001$ ) for all the characteristics. Significance of the difference with the normotensive reference group: <sup>\*</sup> $P < 0.05$ , <sup>†</sup> $P < 0.01$ , and <sup>‡</sup> $P < 0.001$ . BP, blood pressure.

577 patients with INH, only 120 (20.8%) were diagnosed as being hypertensive on conventional BP measurement.

### Incidence of events

In the overall study population, median follow-up was 10.7 years (5th to 95th percentile interval 2.5–15.4 years). Across cohorts, median follow-up ranged from 2.5 years (5th to 95th percentile interval 2.3–2.6 years) in JingNing to 13.3 years (5th–95th percentile interval 4.7–16.3 years) in Noorderkempen. During 87 203 person-years of follow-up, 1284 participants died (14.7 per 1000 person-years) and 1109 experienced a fatal or nonfatal cardiovascular complication (13.2 per 1000 person-years). Mortality included 501 cardiovascular and 742 noncardiovascular deaths and 41 deaths from unknown cause (Table 2). Considering cause-specific first cardiovascular events, the incidence of fatal and nonfatal stroke amounted to 145 and 391, respectively. Cardiac events consisted of 176 fatal and 442 nonfatal events, including 76 fatal and 214 nonfatal cases of acute MI, 32 deaths from ischemic heart disease, 28 sudden deaths, 40 fatal and 171 nonfatal cases of heart failure, and 57 cases of surgical or percutaneous coronary revascularization.

### Risk associated with subtypes of ambulatory hypertension

Table 2 shows the crude and cohort, sex, and age-standardized rates of mortality and combined fatal and

nonfatal events by subtypes of ambulatory hypertension. The Kaplan–Meier survival function estimates for total mortality and for all fatal combined with nonfatal cardiovascular events according to BP classification appear in Fig. 1. Compared with normotensive individuals, patients with IDH, INH, or sustained hypertension had a significantly higher ( $P < 0.05$ ) incidence of mortality and morbidity (Table 2).

Table 3 provides unadjusted and adjusted hazard ratios associated with the three categories of ambulatory hypertension relative to the normotensive control group. With cumulative adjustments applied for cohort, sex, age, BMI, smoking and drinking, serum cholesterol, diabetes, and history of cardiovascular disease, INH was associated with an increased risk for total mortality (hazard ratio 1.29,  $P = 0.045$ ) and all cardiovascular events (hazard ratio 1.38,  $P = 0.037$ ). The hazard ratios for cardiovascular mortality (1.30,  $P = 0.29$ ), cardiac events (1.41,  $P = 0.096$ ), and stroke (1.21,  $P = 0.46$ ) were of similar magnitude but did not reach statistical significance because of the relatively low number of events for these endpoints. With similar adjustments applied, IDH was associated with significant increases in all cardiovascular events (hazard ratio 1.46,  $P = 0.0019$ ) and cardiac endpoints (hazard ratio 1.53,  $P = 0.0061$ ), but not total mortality (hazard ratio 1.07,  $P = 0.56$ ), cardiovascular mortality (hazard ratio 1.38,  $P = 0.091$ ), and

**Table 2 Incidence of events by ambulatory blood pressure status**

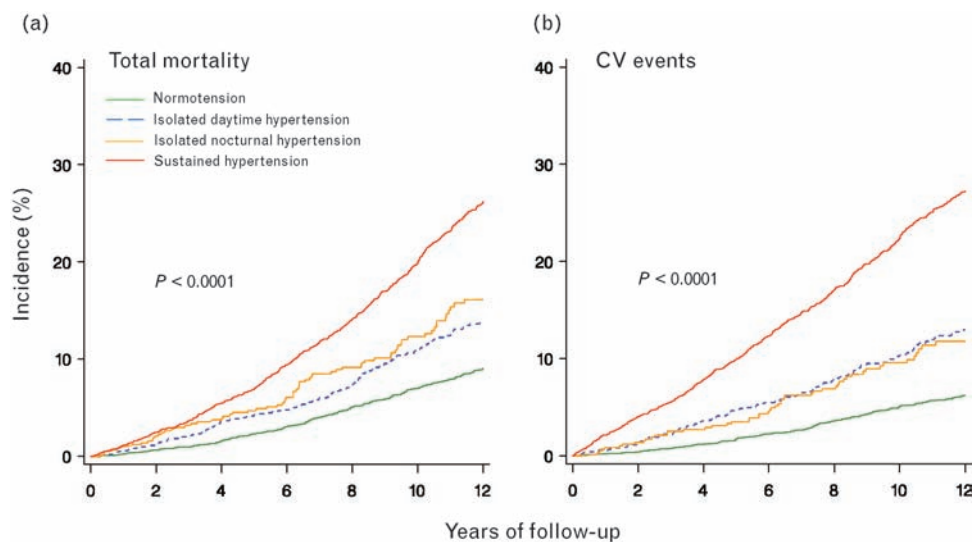
	Normotension	Isolated nocturnal hypertension	Isolated daytime hypertension	Sustained hypertension
Number of participants	3837	577	994	3303
All-causes mortality				
Number of deaths	295	81	128	780
Crude rate	7.6 (6.7–8.4)	14.7 (11.5–17.9) <sup>‡</sup>	12.4 (10.3–14.6) <sup>‡</sup>	24.1 (22.4–25.8) <sup>‡</sup>
Standardized rate	10.6 (5.9–15.3)	13.9 (2.2–25.6)	11.2 (3.3–19.1)	18.5 (11.6–25.4)
Cardiovascular mortality				
Number of deaths	76	22	46	357
Crude rate	1.9 (1.5–2.4)	4.0 (2.6–5.7) <sup>†</sup>	4.5 (3.2–5.8) <sup>‡</sup>	11.0 (9.9–12.2) <sup>‡</sup>
Standardized rate	2.8 (0.7–4.9)	3.9 (0–8.7)	4.3 (0–9.0)	8.5 (4.1–12.8)
Noncardiovascular mortality				
Number of deaths	210	55	76	401
Crude rate	5.4 (4.6–6.1)	10.0 (7.3–12.6) <sup>‡</sup>	7.4 (5.7–9.1) <sup>*</sup>	12.4 (11.2–13.6) <sup>‡</sup>
Standardized rate	7.5 (3.7–11.3)	9.3 (0.7–17.8)	6.5 (1.4–11.7)	9.2 (5.3–13.1)
All cardiovascular events				
Number of events	188	54	112	755
Crude rate	4.9 (4.2–5.6)	10.1 (7.4–12.8) <sup>‡</sup>	11.2 (9.2–13.3) <sup>‡</sup>	25.1 (23.3–26.9) <sup>‡</sup>
Standardized rate	7.0 (3.3–10.7)	9.7 (0.3–19.2)	11.1 (0.9–21.3)	20.1 (12.4–27.8)
Cardiac events				
Number of events	108	31	73	406
Crude rate	2.8 (2.3–3.3)	5.7 (3.7–7.7) <sup>†</sup>	7.2 (5.6–8.9) <sup>‡</sup>	13.0 (11.8–14.3) <sup>‡</sup>
Standardized rate	4.0 (1.3–6.8)	5.6 (0–12.0)	6.5 (0.2–12.9)	10.7 (5.6–15.9)
Stroke				
Number of strokes	78	20	39	344
Crude rate	2.0 (1.6–2.5)	3.7 (2.1–5.3) <sup>*</sup>	3.8 (2.6–5.0) <sup>†</sup>	11.0 (9.9–12.2) <sup>‡</sup>
Standardized rate	2.7 (0.7–4.7)	3.4 (0–8.3)	4.4 (0–9.4)	8.5 (4.0–13.0)

Values are rates (95% confidence interval), expressed as number of events per 1000 person-years. Rates are crude or standardized for cohort, sex, and age (<40, 40–60, and ≥60 years) by the direct method. Significance of the difference with the normotensive reference group: \**P* < 0.05, <sup>†</sup>*P* < 0.01, and <sup>‡</sup>*P* < 0.001.

stroke (hazard ratio 1.35, *P* = 0.13). The multivariable-adjusted hazard ratios associated with sustained hypertension (Table 3) were significant for total mortality (1.51, *P* < 0.0001), cardiovascular mortality (2.19, *P* < 0.0001), all cardiovascular events (2.48, *P* < 0.0001), cardiac events (2.30, *P* < 0.0001), and stroke (2.64, *P* < 0.0001). After exclusion of 1899 treated

patients from the sustained hypertensive group, the hazard ratios for 1404 patients with elevated BP values during day and night were 1.47 [95% confidence interval (CI) 1.23–1.76, *P* < 0.0001] for total mortality, 2.16 (95% CI 1.58–2.95, *P* < 0.0001) for cardiovascular mortality, 2.33 (95% CI 1.91–2.84, *P* < 0.0001) for all cardiovascular events, 1.94 (95% CI 1.49–2.53, *P* < 0.0001) for cardiac

**Fig. 1**



Cumulative incidence of total mortality (a) and all cardiovascular events (b) by ambulatory blood pressure status. *P* values are for the differences among the four categories by log-rank test.

**Table 3 Hazard ratios by categories of ambulatory hypertension**

Outcomes	Isolated nocturnal hypertension	Isolated daytime hypertension	Sustained hypertension
All-causes mortality (1284)	81	128	780
Unadjusted	1.99 (1.56–2.55) <sup>‡</sup>	1.67 (1.35–2.05) <sup>‡</sup>	3.26 (2.85–3.73) <sup>‡</sup>
Adjusted	1.29 (1.01–1.65)*	1.07 (0.86–1.32)	1.51 (1.31–1.74) <sup>‡</sup>
Cardiovascular mortality (501)	22	46	357
Unadjusted	2.10 (1.31–3.38) <sup>†</sup>	2.32 (1.61–3.35) <sup>‡</sup>	5.78 (4.51–7.40) <sup>‡</sup>
Adjusted	1.30 (0.80–2.09)	1.38 (0.95–2.00)	2.19 (1.69–2.85) <sup>‡</sup>
Noncardiovascular mortality (742)	55	76	401
Unadjusted	1.89 (1.41–2.55) <sup>‡</sup>	1.38 (1.07–1.80)*	2.35 (1.98–2.77) <sup>‡</sup>
Adjusted	1.23 (0.91–1.66)	0.90 (0.69–1.18)	1.19 (0.99–1.43)
All cardiovascular events (1109)	54	112	755
Unadjusted	2.08 (1.53–2.81) <sup>‡</sup>	2.28 (1.81–2.89) <sup>‡</sup>	5.16 (4.40–6.06) <sup>‡</sup>
Adjusted	1.38 (1.02–1.87)*	1.46 (1.15–1.85) <sup>†</sup>	2.48 (2.10–2.94) <sup>‡</sup>
Cardiac events (618)	31	73	406
Unadjusted	2.05 (1.38–3.06) <sup>‡</sup>	2.56 (1.91–3.45) <sup>‡</sup>	4.66 (3.77–5.76) <sup>‡</sup>
Adjusted	1.41 (0.94–2.10)	1.53 (1.13–2.07) <sup>†</sup>	2.30 (1.84–2.88) <sup>‡</sup>
Stroke (481)	20	39	344
Unadjusted	1.85 (1.13–3.02) <sup>†</sup>	1.90 (1.29–2.78) <sup>†</sup>	5.52 (4.32–7.06) <sup>‡</sup>
Adjusted	1.21 (0.74–1.98)	1.35 (0.91–2.00)	2.64 (2.04–3.43) <sup>‡</sup>

Hazard ratios (95% confidence intervals) express the risk relative to the normotensive group. Numbers of cases are given for each endpoint. The cause of death was unknown in 41 cases. Cox models were adjusted for cohort, sex, age, body mass index, smoking and drinking, serum cholesterol, history of cardiovascular disease and diabetes mellitus. Significance of the hazard ratios: \* $P < 0.05$ , <sup>†</sup> $P < 0.01$ , and <sup>‡</sup> $P < 0.001$ .

events, and 2.73 (95% CI 2.00–3.73,  $P < 0.0001$ ) for stroke.

### Sensitivity analyses

Sensitivity analyses (Table 4) involving total mortality and all cardiovascular events in relation to INH did not show significant heterogeneity in the hazard ratios ( $0.08 \leq P \leq 0.89$ ) according to baseline characteristics, including ethnicity, sex, median age ( $<60$  or  $\geq 60$  years), BMI ( $<25$  or  $\geq 25$  kg/m<sup>2</sup>), current smoking (0, 1), drinking alcohol (0, 1), or history of cardiovascular disease (0, 1). The only exception was the risk of all cardiovascular events associated with INH in smokers versus nonsmokers [hazard ratios (95% CI) 0.80 (0.43–1.47) versus 1.78 (95% 1.25–2.55),  $P = 0.016$ ]. After further adjustment for daytime SBP and DBP in addition to the

covariables we had considered in the multivariable Cox models, INH still carried a higher risk for total mortality [hazard ratio 1.28 (95% CI 1.00–1.64),  $P = 0.049$ ] and for all cardiovascular events [hazard ratio 1.34 (95% CI 0.99–1.81),  $P = 0.06$ ] compared with the normotensive group. Similarly, after additional adjustment for night-time SBP and DBP, IDH remained predictive for all cardiovascular events [hazard ratio 1.39 (95% CI 1.10–1.77),  $P = 0.01$ ], but did not predict total mortality [hazard ratio 1.03 (95% CI 0.84–1.28),  $P = 0.76$ ].

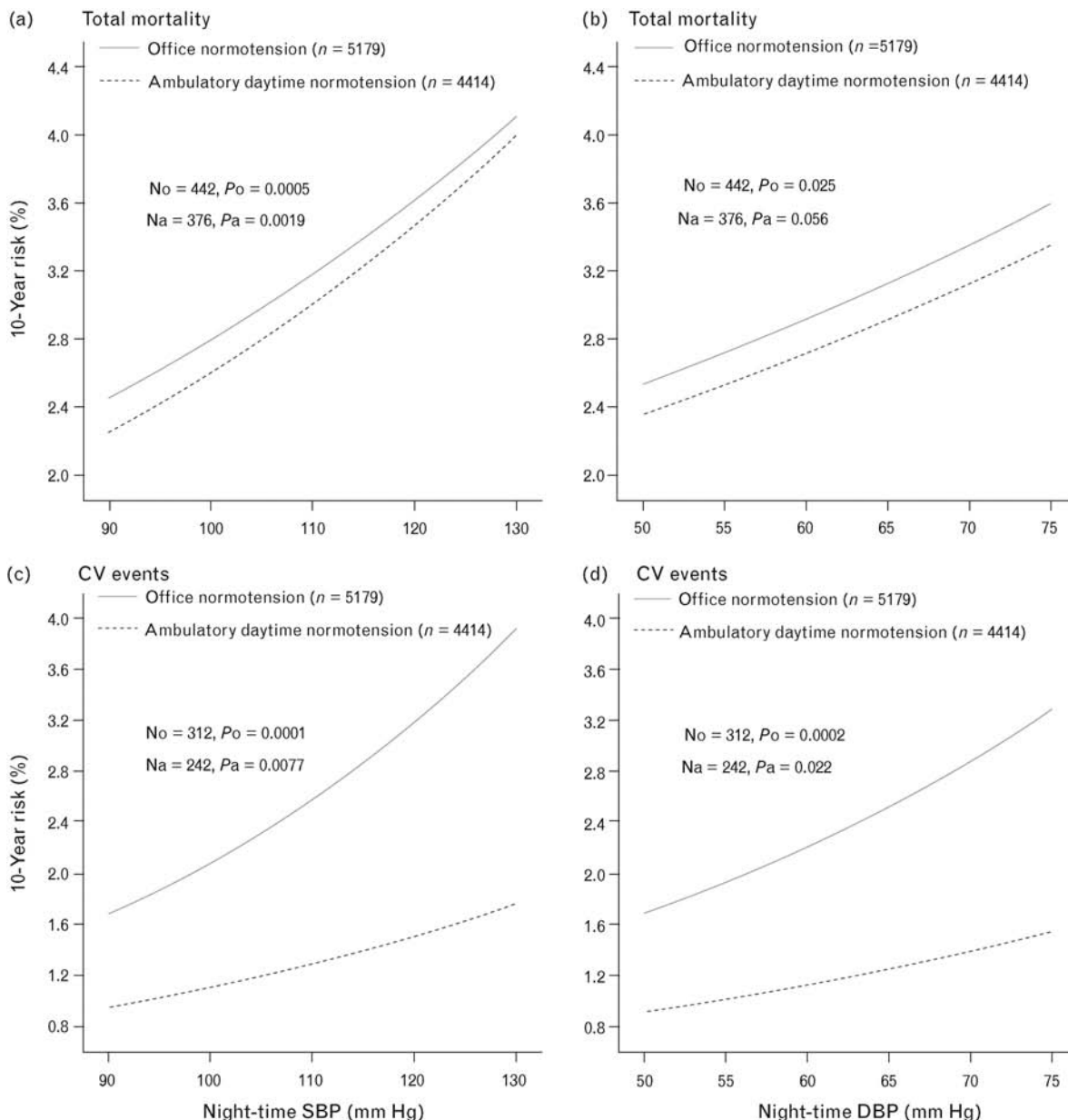
Of 8711 participants, 5179 were normotensive on office BP measurement and 4414 had daytime normotension on ambulatory BP monitoring. Figure 2 shows the continuous risk functions for total mortality and for all fatal and nonfatal cardiovascular events associated with night-time

**Table 4 Adjusted hazard ratios associated with isolated nocturnal hypertension for total mortality and all cardiovascular events by baseline characteristics**

Stratification	Total mortality		All cardiovascular events	
	Events/at risk	Hazard ratio (95% CI)	Events/at risk	Hazard ratio (95% CI)
All participants	1284/8711	1.29 (1.01–1.65)*	1109/8711	1.38 (1.02–1.87)*
European	830/5396	1.32 (0.96–1.82)	733/5396	1.34 (0.91–1.97)
Asian	358/1877	1.23 (0.79–1.92)	255/1877	1.37 (0.71–2.65)
South American	96/1438	0.91 (0.39–2.12)	121/1438	1.67 (0.76–3.67)
Women	411/4096	1.46 (0.93–2.29)	334/4096	1.70 (0.98–2.97)
Men	873/4615	1.21 (0.90–1.62)	775/4615	1.27 (0.88–1.83)
Age $<60$ years	177/4868	1.99 (1.14–3.47)*	190/4868	1.77 (0.89–3.55)
Age $\geq 60$ years	1107/3843	1.17 (0.89–1.54)	919/3843	1.24 (0.89–1.75)
Smokers	452/2491	1.35 (0.91–2.00)	361/2491	0.80 (0.43–1.47)
Nonsmokers	832/6220	1.24 (0.90–1.71)	748/6220	1.78 (1.25–2.55) <sup>†</sup>
Drinkers	587/4126	1.13 (0.77–1.66)	531/4126	1.39 (0.89–2.19)
Nondrinkers	697/4585	1.37 (0.99–1.90)	578/4585	1.34 (0.88–2.03)
BMI $<25$ kg/m <sup>2</sup>	664/4366	1.26 (0.91–1.74)	505/4366	1.63 (1.08–2.46)*
BMI $\geq 25$ kg/m <sup>2</sup>	620/4345	1.25 (0.85–1.84)	604/4345	1.12 (0.71–1.76)
Without CVD history	1040/7951	1.28 (0.98–1.67)	878/7951	1.27 (0.91–1.79)
With CVD history	244/760	1.57 (0.78–3.15)	231/760	2.09 (1.00–4.36)*

The hazard ratios (95% CIs) express the risk associated with isolated nocturnal hypertension relative to the normotensive group. For the covariates in the Cox models, please see the legend of Table 3. Significance of the hazard ratios: \* $P < 0.05$ , <sup>†</sup> $P < 0.01$ . Heterogeneity in the risk of all cardiovascular events between smokers and nonsmokers was significant ( $P = 0.02$ ). CI, confidence interval; CVD, cardiovascular disease.

Fig. 2



Ten-year risk of total mortality (a and b) and of fatal and nonfatal combined cardiovascular events (c and d) associated with night-time SBP (left) and DBP (right) in individuals with office normotension (full lines) or with ambulatory daytime normotension (dashed lines). In Cox regression models, the incidence rates were adjusted for cohort, sex, age, BMI, smoking and drinking, serum cholesterol, history of cardiovascular disease, and diabetes mellitus. No and Na indicate the number of events in individuals with office normotension and with ambulatory daytime normotension, respectively. Po and Pa denote the corresponding significance of the independent contributions of night-time blood pressures.

SBP and DBP in individuals with office or ambulatory daytime normotension.

Of 457 patients with INH and normal office BP, 51 (11.2%) died and 38 (8.3%) experienced a composite cardiovascular endpoint. Among 120 patients with both INH and office hypertension, these numbers were 30 (25.0%) and 16 (13.3%), respectively. Although the rates

were higher among patients with both INH and office hypertension compared with their counterparts with office normotension, the hazard ratios associated with INH remained significant for total mortality (1.31; 95% CI 1.01–1.68,  $P=0.039$ ) and for all cardiovascular events (1.38; 95% CI 1.01–1.87,  $P=0.044$ ) with additional adjustment for the office BP. When we considered only individuals with office normotension ( $n=5179$ ), the

hazard ratios associated with INH were 1.17 (95% CI 0.86–1.59,  $P=0.31$ ) for total mortality and 1.48 (95% CI 1.03–2.12,  $P=0.034$ ) for all cardiovascular events.

## Discussion

The key finding of our current meta-analysis based on individual participant data was that while accounting for age, sex, and other covariables, INH was associated with a significantly higher risk of total mortality and all cardiovascular events compared with normotensive individuals. IDH predicted fatal and nonfatal cardiovascular and cardiac events. Patients with sustained hypertension carried a risk approximately twice as high for mortality and all studied cardiovascular events compared with the normotensive group. Our findings corroborated that irrespective of the type of ambulatory hypertension, an elevated BP is a major risk factor for cardiovascular complications. INH, as well as IDH, are not benign and carry a substantially increased risk versus normotension.

The unfavorable cardiovascular prognosis of INH was in keeping with our previous report on the predictive values of daytime and night-time BPs in the IDACO database, which at the time of the publication [7] consisted of 7458 individuals from six populations. When night-time and daytime BPs were analyzed as continuous variables, night-time BP predicted all mortality outcomes, and all cardiovascular, cardiac, and stroke events, independent of the daytime BP and other covariables [7]. One SD elevation of the night-time SBP and DBP increased cardiovascular risk by approximately 20%. Daytime BP did not independently predict mortality outcomes, and was only associated with cardiovascular, coronary, and stroke events [7].

Previous studies in hypertensive patients [25–29] as well as in populations [13,17,30] demonstrated that an elevated nocturnal BP or a diminished nocturnal BP fall was associated with a worse outcome. In 1542 Ohasama residents [13], each 5% decrease in the nocturnal SBP or DBP fall was associated with an approximately 20% greater risk of cardiovascular mortality. Even when 24-h BP values were within the normal range (defined as <135/80 mmHg), a diminished nocturnal BP reduction was associated with an increased risk of cardiovascular mortality. In a recently published meta-analysis [28] of individual data of 3468 hypertensive patients from four European studies, both daytime and night-time BP predicted all-cause and cardiovascular mortality, coronary heart disease, and stroke. However, when night-time and daytime BPs were added to the same Cox model, the night-time BP predicted all outcomes, whereas daytime BP did not add prognostic precision to the night-time pressure. That the night-time BP was superior to the daytime BP in the prediction of mortality outcomes was also reported in the patients randomized to placebo in the double-blind Systolic Hypertension in Europe trial [25],

in Irish hypertensive patients [26], and in a recent Ohasama publication [30].

INH is a heterogeneous disorder, only characterized by an elevation of BP at night in the presence of a normal daytime BP. In the current study, 20.8% of patients with INH had office hypertension. Two other studies also reported on INH, but determined daytime normotension either by the use of office BP [3] or the self-measured BP at home [2]. The prevalence of INH was 7.2% in middle-aged patients with type 2 diabetes and close to 30% in the subgroup of diabetic patients with office normotension [3]. Irrespective of its definition, INH was associated with increased pulse wave velocity [1,3], higher central BP [3] and increased systolic augmentation [1], increased carotid intima–medial thickness, left ventricular remodeling, or all [2]. Our current results, for the first time, established the prognostic implications of INH in terms of mortality and morbidity.

The mechanisms linking INH with a worse cardiovascular outcome remain to be elucidated. Several mechanisms might be involved, such as excess sympathetic activation [31], disturbed baroreflex sensitivity or autonomic failure [32,33], decreased daytime sodium excretion [34], nocturnal pressure natriuresis [35], increased nocturnal activity [36], sleep apnea [37], insulin resistance [38], impaired endothelial function, or all [39]. Furthermore, as noticed in our current study and in previous reports [1–3], patients with INH were more likely to be older, to have diabetes, or a history of cardiovascular disease. Clustering of cardiovascular risk factors might, therefore, also contribute to the worse prognosis associated with INH.

The current study has to be interpreted within the context of its potential limitations. First, although our total sample size was over 8000, we had only 577 patients with INH and relatively few events in this group. The statistical power was low for specific cardiovascular outcomes, for instance, we had only 42 and 12% power to reject the null hypothesis of no association for cardiac events and stroke, respectively. Second, the reproducibility of INH is low. In a follow-up study [1] of the JingNing cohort, at a median interval of 3.5 years, one-third of the patients with INH at baseline kept this condition; one-third developed sustained hypertension, whereas others shifted to normotension or IDH.

Our current findings might have implications for clinical practice. INH can only be diagnosed by automated measurement of BP during sleep. Ambulatory BP monitoring is the best technique to obtain the night-time measurements in an identical way as those during daytime. Our study adds to the growing evidence that ambulatory BP monitoring should be applied more widely in clinical practice [40], and highlights the importance of having BP monitored during the whole day, rather than during a limited time window. Further studies are



needed to address the benefit of specifically lowering the night-time BP in patients with INH.

## Acknowledgements

We gratefully acknowledge the expert assistance of Sandra Covens and Ya Zhu (Studies Coordinating Centre, Leuven, Belgium).

The European Union (EU; grants #IC15-CT98-0329-EPOGH, LSHM-CT-2006-037093, and HEALTH-F4-2007-201550), the Fonds voor Wetenschappelijk Onderzoek Vlaanderen (Ministry of the Flemish Community, Brussels, Belgium; grants #G.0424.03 and G.0575.06), and the University of Leuven (grants #OT/00/25 and OT/05/49) gave support to the Studies Coordinating Centre in Leuven. The EU (grants #LSHM-CT-2006-037093 and HEALTH-F4-2007-201550) also supported the research groups in Shanghai, Kraków, Padova, and Novosibirsk. The Bilateral Scientific and Technological Collaboration between China and Flanders, Ministry of the Flemish Community, Brussels (grant #BIL02/10), supported the fellowship of Y.L. in Leuven. The Danish Heart Foundation (grant #01-2-9-9A-22914) and the Lundbeck Fonden (grant #R32-A2740) supported the studies in Copenhagen. The Ministries of Education, Culture, Sports, Science, and Technology (grants #15790293, 16590433, 17790381, 18390192, 18590587, 19590929, and 19790423) and of Health, Labor, and Welfare (Health Science Research grants, Medical Technology Evaluation Research grants, H17-Kenkou-007, H18-Junkankitou[Seishuu]-Ippan-012, and H20-Junkankitou[Seishuu]-Ippan-009, 013), a Grant-in-Aid from the Japanese Society for the Promotion of Science (16.54041, 18.54042, 19.7152, 20.7198, 20.7477, and 20.54043), the Japan Atherosclerosis Prevention Fund, the Uehara Memorial Foundation, the Takeda Medical Research Foundation, the National Cardiovascular Research Grants, and the Biomedical Innovation Grants supported research in Japan. The National Natural Science Foundation of China (grants #30871360 and 30871081), Beijing, China, and the Shanghai Commissions of Science and Technology (grant #07JC14047 and the 'Rising Star' program 06QA14043) and Education (grant #07ZZ32 and the 'Dawn' project 08SG20) supported the JingNing study in China.

There are no conflicts of interest.

## References

- Li Y, Staessen JA, Lu L, Li LH, Wang GL, Wang JG. Is isolated nocturnal hypertension a new clinical entity? *Hypertension* 2007; **50**:333–339.
- Hoshida S, Ishikawa J, Eguchi K, Ojima T, Shimada K, Kario K. Masked nocturnal hypertension and target organ damage in hypertensives with well controlled self-measured home blood pressure. *Hypertens Res* 2007; **30**:143–149.
- Wijkman M, Länne T, Engvall J, Lindström T, Östgren CJ, Nystrom FH. Masked nocturnal hypertension: a novel marker of risk in type 2 diabetes. *Diabetologia* 2009; **52**:1258–1264.
- Staessen JA, O'Brien ET, Amery AK, Atkins N, Baumgart P, De Cort P, et al. Ambulatory blood pressure in normotensive and hypertensive subjects: results from an international database. *J Hypertens* 1994; **12** (Suppl 7): S1–S12.
- Thijs L, Hansen TW, Kikuya M, Björklund-Bodegård K, Li Y, Dolan E, et al., on behalf of the IDACO Investigators. The International Database of Ambulatory blood pressure in relation to Cardiovascular Outcome (IDACO): protocol and research perspectives. *Blood Press Monit* 2007; **12**:255–262.
- Kikuya M, Hansen TW, Thijs L, Björklund-Bodegård K, Kuznetsova T, Ohkubo T, et al., on behalf of the IDACO Investigators. Diagnostic thresholds for ambulatory blood pressure monitoring based on 10-year cardiovascular risk. *Circulation* 2006; **115**:2145–2152.
- Boggia J, Li Y, Thijs L, Hansen TW, Kikuya M, Björklund-Bodegård K, et al., on behalf of the International Database on Ambulatory blood pressure monitoring in relation to Cardiovascular Outcomes (IDACO) investigators. Prognostic accuracy of day versus night ambulatory blood pressure: a cohort study. *Lancet* 2007; **370**:1219–1229.
- Hansen TW, Thijs L, Boggia J, Kikuya K, Björklund-Bodegård K, Richart T, et al., on behalf of the IDACO investigators. Prognostic value of ambulatory heart rate revisited in 6928 subjects from 6 populations. *Hypertension* 2008; **52**:229–235.
- O'Brien E, Murphy J, Tyndall A, Atkins N, Mee F, McCarthy G, et al. Twenty-four-hour ambulatory blood pressure in men and women aged 17 to 80 years: the Allied Irish Bank Study. *J Hypertens* 1991; **9**:355–360.
- Staessen JA, Bieniaszewski L, O'Brien ET, Imai Y, Fagard R. An epidemiological approach to ambulatory blood pressure monitoring: the Belgian population study. *Blood Press Monit* 1996; **1**:13–26.
- Schettini C, Bianchi M, Nieto F, Sandoya E, Senra H, Hypertension Working Group. Ambulatory blood pressure: normality and comparison with other measurements. *Hypertension* 1999; **34** (4 Pt 2):818–825.
- Kuznetsova T, Malyutina S, Pello E, Thijs L, Nikitin Y, Staessen JA. Ambulatory blood pressure of adults in Novosibirsk, Russia: interim report on a population study. *Blood Press Monit* 2000; **5**:291–296.
- Ohkubo T, Hozawa A, Yamaguchi J, Kikuya M, Ohmori K, Michimata M, et al. Prognostic significance of the nocturnal decline in blood pressure in individuals with and without high 24-h blood pressure: the Ohasama study. *J Hypertens* 2002; **20**:2183–2189.
- Kuznetsova T, Staessen JA, Kawecka-Jaszcz K, Babeanu S, Casiglia E, Filipovsky J, et al., on behalf of the EPOGH Investigators. Quality control of the blood pressure phenotype in the European Project on Genes in Hypertension. *Blood Press Monit* 2002; **7**:215–224.
- Li Y, Wang JG, Gao HF, Nawrot T, Wang GL, Qian YS, et al. Are published characteristics of the ambulatory blood pressure generalizable to rural Chinese? The JingNing population study. *Blood Press Monit* 2005; **10**:125–134.
- Hansen TW, Jeppesen J, Rasmussen S, Ibsen H, Torp-Pedersen C. Ambulatory blood pressure and risk of cardiovascular disease: a population based study. *Am J Hypertens* 2006; **19**:243–259.
- Ingelsson E, Björklund K, Lind L, Ärnlöv J, Sundström J. Diurnal blood pressure pattern and risk of congestive heart failure. *JAMA* 2006; **295**:2859–2866.
- Mancia G, Bombelli M, Facchetti R, Madotto F, Corrao G, Trevano FQ, et al. Long-term prognostic value of blood pressure variability in the general population. Results of the Pressioni Arteriose Monitorate a Loro Associazioni study. *Hypertension* 2007; **49**:1265–1270.
- Shiburi CP, Staessen JA, Maseko M, Wojciechowska W, Thijs L, Van Bortel LM, et al. Reference values for SphygmoCor measurements in South Africans of African ancestry. *Am J Hypertens* 2006; **19**:40–46.
- Mancia G, De Backer G, Dominiczak A, Cifkova R, Fagard R, Germano G, et al. 2007 guidelines for the management of arterial hypertension: the Task Force for the Management of Arterial Hypertension of the European Society of Hypertension (ESH) and of the European Society of Cardiology (ESC). *Eur Heart J* 2007; **28**:1462–1536.
- Ohkubo T, Imai Y, Tsuji I, Nagai K, Ito S, Satoh H, et al. Reference values for 24-h ambulatory blood pressure monitoring based on a prognostic criterion. The Ohasama Study. *Hypertension* 1998; **32**:255–259.
- Fagard R, Brguljan J, Thijs L, Staessen J. Prediction of the actual awake and asleep blood pressures by various methods of 24 h pressure analysis. *J Hypertens* 1996; **14**:557–563.
- O'Brien E, Asmar R, Beilin L, Imai Y, Mancia G, Mengden T, et al., on behalf of the European Society of Hypertension Working Group on Blood Pressure Monitoring. Practice guidelines of the European Society of Hypertension for clinic, ambulatory and self blood pressure measurement. *J Hypertens* 2005; **23**:697–701.
- Pocock S, Clayton TC, Altman DG. Survival plot of time-to-event outcomes in clinical trials. *Lancet* 2002; **359**:1686–1689.
- Staessen JA, Thijs L, Fagard R, O'Brien E, Clement D, de Leeuw PW, et al., for the Systolic Hypertension in Europe Trial Investigators. Predicting cardiovascular risk using conventional vs ambulatory blood pressure in older patients with systolic hypertension. *JAMA* 1999; **282**:539–546.

- 26 Dolan E, Stanton A, Thijs L, Hinedi K, Atkins N, McClory S, *et al.* Superiority of ambulatory over clinic blood pressure measurement in predicting mortality. The Dublin Outcome Study. *Hypertension* 2005; **46**:156–161.
- 27 Ben-Dov IZ, Kark JD, Ben-Ishay D, Mekler J, Ben-Arie L, Bursztyn M. Predictors of all-cause mortality in clinical ambulatory monitoring: unique aspects of blood pressure during sleep. *Hypertension* 2007; **49**:1235–1241.
- 28 Fagard RH, Celis H, Thijs L, Staessen JA, Clement DL, De Buyzere ML, *et al.* Daytime and nighttime blood pressure as predictors of death and cause-specific cardiovascular events in hypertension. *Hypertension* 2008; **51**:55–61.
- 29 Muxfeldt ES, Cardoso CR, Salles GF. Prognostic value of nocturnal blood pressure reduction in resistant hypertension. *Arch Intern Med* 2009; **169**:874–880.
- 30 Kikuya M, Ohkubo T, Asayama K, Metoki H, Obara T, Saito S, *et al.* Ambulatory blood pressure and 10-year risk of cardiovascular and noncardiovascular mortality: the Ohasama study. *Hypertension* 2005; **45**:240–245.
- 31 Grassi G, Seravalle G, Quarti-Trevano F, Dell'Oro R, Bombelli M, Cuspidi C, *et al.* Adrenergic, metabolic, and reflex abnormalities in reverse and extreme dipper hypertensives. *Hypertension* 2008; **52**:925–931.
- 32 Okamoto LE, Gamboa A, Shibao C, Black BK, Diedrich A, Raj SR, *et al.* Nocturnal blood pressure dipping in the hypertension of autonomic failure. *Hypertension* 2009; **53**:363–369.
- 33 Vaile JC, Stallard TJ, Al-ani M, Jordan PJ, Townend JN, Littler WA. Sleep and blood pressure: spontaneous baroreflex sensitivity in dippers and nondippers. *J Hypertens* 1996; **14**:1427–1432.
- 34 Bankir L, Bochud M, Maillard M, Bovet P, Gabriel A, Burnier M. Nighttime blood pressure and nocturnal dipping are associated with daytime urinary sodium excretion in African subjects. *Hypertension* 2008; **51**:891–898.
- 35 Sachdeva A, Weder AB. Nocturnal sodium excretion, blood pressure dipping, and sodium sensitivity. *Hypertension* 2006; **48**:527–533.
- 36 Agarwal R, Light RP, Bills JE, Hummel LA. Nocturia, nocturnal activity, and nondipping. *Hypertension* 2009; **54**:646–651.
- 37 Hla KM, Young T, Finn L, Peppard PE, Szklo-Coxe M, Stubbs M. Longitudinal association of sleep-disordered breathing and nondipping of nocturnal blood pressure in the Wisconsin Sleep Cohort Study. *Sleep* 2008; **31**:795–800.
- 38 Lurbe E, Torro I, Aguilar F, Alvarez J, Alcon J, Pascual JM, *et al.* Added impact of obesity and insulin resistance in nocturnal blood pressure elevation in children and adolescents. *Hypertension* 2008; **51**:635–641.
- 39 Higashi Y, Nakagawa K, Kimura M, Noma K, Hara K, Sasaki S, *et al.* Circadian variation of blood pressure and endothelial function in patients with essential hypertension: a comparison of dippers and nondippers. *J Am Coll Cardiol* 2002; **40**:2039–2043.
- 40 O'Brien E. Ambulatory blood pressure measurement: the case for implementation in primary care. *Hypertension* 2008; **51**:1435–1441.