

Pseudoscorpion Wolbachia symbionts: Diversity and Evidence for a New Supergroup S

Emilie Lefoulon

New England Biolabs Inc

Travis Clark

New England Biolabs Inc

Fanni Borveto

Universite de Montpellier

Marco Perriat-Sanguinet

Universite de Montpellier

Catherine Moulia

Universite de Montpellier

Barton Slatko (✉ slatko@neb.com)

New England Biolabs <https://orcid.org/0000-0002-5288-6398>

Laurent Gavotte

Universite de Montpellier

Research article

Keywords: Wolbachia, pseudoscorpion, symbiosis, target enrichment, genomics, biotin

Posted Date: May 5th, 2020

DOI: <https://doi.org/10.21203/rs.2.22118/v3>

License:   This work is licensed under a Creative Commons Attribution 4.0 International License.

[Read Full License](#)

Version of Record: A version of this preprint was published at BMC Microbiology on June 30th, 2020. See the published version at <https://doi.org/10.1186/s12866-020-01863-y>.

Abstract

Background *Wolbachia* are the most widely spread endosymbiotic bacteria, present in a wide variety of insects and two families of nematodes, but as of now, relatively little genomic data has been available. The *Wolbachia* symbiont can be parasitic, as described for many arthropod systems, an obligate mutualist, as in filarial nematodes or a combination of both in some organisms. They are currently classified into 16 monophyletic lineage groups ("supergroups"). Although the nature of these symbioses remains largely unknown, expanded *Wolbachia* genomic data will contribute to understanding their diverse symbiotic mechanisms and evolution.

Results This report focuses on *Wolbachia* infections in three pseudoscorpion species infected by two distinct groups of *Wolbachia* strains, based upon multi-locus phylogenies. *Geogarypus minor* harbours *w* Gmin and *Chthonius ischnocheles* harbours *w* Cisc, both closely related to supergroup H, while *Atemnus politus* harbours *w* Apol, a member of a novel supergroup S along with *Wolbachia* from the pseudoscorpion *Cordylochernes scorpioides* (*w* Cscs), most closely related to *Wolbachia* supergroups C and F. Using target enrichment by hybridization with *Wolbachia*-specific biotinylated probes to capture large fragments of *Wolbachia* DNA, we produced two draft genomes of *w* Apol. Annotation of *w* Apol highlights presence of a biotin operon, which is incomplete in many sequenced *Wolbachia* genomes.

Conclusions The present study highlights at least two symbiont acquisition events among pseudoscorpion species. Phylogenomic analysis indicates that the *Wolbachia* from *Atemnus politus* (*w* Apol), forms a separate supergroup ("S") with the *Wolbachia* from *Cordylochernes scorpioides* (*w* Cscs). Interestingly, the biotin operon, present in *w* Apol, appears to have been horizontally transferred multiple times along *Wolbachia* evolutionary history.

Background

Wolbachia are endosymbiotic alpha-proteobacteria infecting a broad range of arthropods and nematodes [1, 2]. The bacteria of this genus are considered to be the most widely spread symbionts in the animal world, perhaps infecting half of insect species [3-5]. *Wolbachia* are maternally inherited and can induce variable phenotypes in their hosts through mutualism or parasitism [6-9]. *Wolbachia* are genetically diverse, as are the interactions with their hosts [10, 11]. Currently, there is a general consensus to classify them in monophyletic lineage groups ("supergroups" A to R). *Wolbachia* belonging to supergroups C, D and J exclusively infect filarial nematodes (Onchocercidae) [12-14]. Supergroup L exclusively contains plant parasitic nematodes (Pratylenchidae) [15, 16]. Supergroup F *Wolbachia* is, so far, the only clade composed by some strains infecting arthropods and some infecting filarial nematodes [17, 18]. All other described supergroups exclusively infect arthropods [19-23]. The proposed supergroup G members [24] and R [25] are now considered to be part of supergroup B [26] and A [27], respectively, and are no longer considered as separate supergroups.

In the last few years, the number of published *Wolbachia* genomes has increased and currently 48 draft and 21 complete genomes of *Wolbachia* are available at the NCBI database. However, these data are not a good representation of the entirety of *Wolbachia* diversity. Indeed, among the 21 complete genomes, 15 are symbionts of insects belonging to either supergroup A or B (including 7 strains from species of *Drosophila*), 2 are symbionts of insects belonging to other supergroups (F and E) and 4 are symbionts of nematodes (supergroups L, C or D). *Wolbachia* has been identified in other arthropods, such as isopods [28, 29] and arachnids [24]. Limited genomic data for isopods are available, for example a draft genome of *wCon*, infecting *Cylisticus convexus* and a draft genome of *wVulC* infecting *Armadillidium vulgare* [30]. No genomic data is available for arachnid symbionts while several studies identified *Wolbachia* in spiders [24, 25, 31], mites [20] or scorpions [32].

In the current study, we focused on the *Wolbachia* symbionts of pseudoscorpions. Pseudoscorpions inhabit wooded areas associated with rotting vegetation. Unlike most arthropods, they are viviparous with embryos obtaining nutrients from the maternal reproductive tract [33]. The presence of *Wolbachia* was described for the first time in pseudoscorpions in 2005 in *Cordylochernes scorpioides* [34]. It has been reported that the endosymbiont is responsible for the "male killing" phenotype in *C. scorpioides*, associated with a high rate of spontaneous abortion.

We examined the prevalence of *Wolbachia* infections in pseudoscorpion population samples from an area in Montpellier (France) where three different species of pseudoscorpions were collected and determined to be positive for *Wolbachia* infection. The molecular analyses phylogenetically identified two different *Wolbachia* groups, of which one strain is divergent from currently accepted *Wolbachia* supergroups. We used *Wolbachia* DNA enrichment capture [35, 36] to ensnare *Wolbachia* DNA for genomic sequencing from this *Wolbachia* strain, *wApo*, infecting *Atemnus politus*.

Results

Identification and Evolution of Pseudoscorpions

In all, 94 pseudoscorpion specimens were collected from an area of Montpellier (France). 60 specimens were morphologically identified as *Atemnus politus* (Simon, 1878), 24 specimens belong to the species *Geogarypus minor* (Koch, 1873) and 10 specimens belong to the species *Chthonius ischnocheles* (Hermann, 1804). The specimen identification is consistent with the analysis of the mitochondrial cytochrome oxidase I gene marker (*COI*). The *COI* sequences of the specimens belonging to *Geogarypus minor* are identical to each other and to the sequence of *Geogarypus nigrimanus* (JN018180 specimen voucher MNHN-JAB62). The species *Geogarypus nigrimanus* has been recently synonymized with *Geogarypus minor* [37]. Regarding the produced *COI* sequences of the specimens belonging to *Chthonius ischnocheles* species, the specimens IV3-1, Q3-1, IV1-1 and Q4 are between 99.8% -100% identical and match the sequence of *Chthonius ischnocheles* available at the NCBI database (JN018172 specimen voucher MNHN-JAB62). The existence of cryptic species of *Chthonius ischnocheles* has been

documented [38] and the specimens IV-J5 and IV-S1 form a paraphyletic group with the other *Chthonius ischnocheles* (Figure 1).

The COI sequences of the specimens identified as *Atemnus politus* present more intraspecific variability: calculated pairwise similarities range between 97.7-99.8%. The blastn analysis [15] does not allow the identification of strongly similar sequences in databases, indeed no COI sequences from species related to the *Atemnus* genus have been deposited in the NCBI database. The most similar COI sequence in the database belongs to *Atemnidae* sp. JA-2011 voucher (JN018203), showing only 79.74% similarity. The COI-based phylogeny indicates that all the specimens of *Atemnus politus* form a clade which is a sister group of the clade composed of *Paratemnoides sumatranus* and *Oratemnus curtus* species, both representatives of the *Atemnidae* family (Figure 1). The COI analysis shows all specimens of *Chthonius ischnocheles* form a sister group of other species belonging to *Chthonius* species (*C. tetrachelatus*, *C. dacnodes*) (Figure 1). To date, the only species of pseudoscorpion described as a *Wolbachia* host, *Cordylochernes scorpioides*, belongs to the Chernetinae and is a sister group to the Atemnidae family (including *Atemnus politus*) (Figure 1).

Prevalence of *Wolbachia* infection

Wolbachia was detected by PCR amplification of *wsp* and *gatB* markers (see Methods) in the three studied pseudoscorpion species and in accordance with the generally used nomenclature of *Wolbachia* strains, we have named these new strains according to their hosts: *wApol* for bacteria infecting *Atemnus politus*, *wGmin* for bacteria infecting *Geogarypus minor* and *wCisc* for bacteria infecting *Chthonius ischnocheles*.

The *A. politus* specimens have the highest prevalence of *Wolbachia* infection with 43.3% positive samples (26 positive of 60 specimens examined). 16.7% of *G. minor* individuals appear to be infected (4 positive of 24 specimens examined), while only 10% of the *C. ischnocheles* (1 positive of 10 specimens examined) show PCR amplification of the *Wolbachia* markers (Table S1).

The *wApol* draft genome and annotation

Two draft genomes were produced for *wApol Wolbachia* from *Atemnus politus* (specimens K5 and K3) using target capture enrichment [35, 36]. For Illumina sequencing, an enrichment of 45-fold was observed (0.4% of the reads mapped to the draft genome without enrichment against 18% with) and 50-fold enrichment was observed with PacBio sequencing (0.8% of the reads mapped to the draft genome without enrichment as opposed to 40.9% with). Unfortunately, the amounts of DNA available for the two specimens were low, and thus the samples were processed simultaneously using individual barcoded adaptors (see Methods) and for PacBio sequencing, relatively few total reads were produced (Table 1). The hybrid *de novo* assembly allowed production of two draft genomes. For specimen K5, a 373 contig

draft genome of 1,445,964 bp was obtained, with an average G+C content of 35.6% (largest contig, 25,286 bp, N50 = 5,741 bp, average sequencing depth of 420X). For specimen K3, a 200 contig draft genome of 1,404,177 bp was obtained, with an average G+C content of 35.49% (largest contig, 40,755bp, N50 =10,346 bp, average sequencing depth= 205X) (Table 1).

Among 221 single-copy orthologue genes conserved among proteobacteria (BUSCOs database), 155 are present in the *wApol* K5 draft genome and 151 in *wApol* K3, suggesting 70.2% and 69% complete BUSCOs, respectively. This percentage can be used to assess the level of completeness of genomes (see Methods). By comparison, the *Wolbachia* from *Drosophila melanogaster*, *wMel*, has a higher level of BUSCOs in the current analysis with 180 genes (81.4%) and *Wolbachia* from *Pratylenchus penetrans*, *wPpe*, has a low level with 161 genes (72.9%) (Table S2). The low level of BUSCOs observed for *wApol* suggest that either the *wApol* draft is incomplete or this genome is highly degraded as has been described for *Wolbachia* from *Onchocerca ochengi* (74.7% complete BUSCOs) [39].

The Average Nucleotide Identity (ANI) calculation (see Methods) indicates that the two *wApol* drafts have 99% identity and they are most similar to *wCle* with 87% identity (Figure 2). According to the analysis of available complete genomes, strains which are representative of the same supergroup share more than 94% identity; for example, 99% for *wOo* and *wOv* (from supergroup C), 94% for *wPip* and *wTpre* (from supergroup B) or 96% for *wMel* and *wCau* (from supergroup A).

1746 coding sequences (CDS) were annotated using RAST from *wApol* K5 and 2,215 CDS from *wApol* K3. The two draft genomes contain a low number of transposable elements (55 mobile elements, 16 group II intron-associated genes, 52 ISs for K5; 35 mobile elements, 9 group II intron-associated genes, 36 ISs for K3) compared to other *Wolbachia* strains infecting insects (with the exception of *wTpre*), but a high number compared to *Wolbachia* infecting filarial nematodes (Table S3). Numerous phage-like genes were observed in the *wApol* K5 draft genome, with 54 CDS (coding sequences) detected on 37 different contigs with 9 annotated as prophage sequences (Table S4). Fewer phage-like genes were detected in the *wApol* K3 draft genome, with 20 CDS detected on 12 different contigs and only one annotated as a prophage sequence (Table S4). The number of phage-like genes is highly variable among the studied *Wolbachia* genomes and the number observed in *wApol* is close to *wMel* (with 44 CDS) or *wCle* (with 20 CDS). However, the variability in transposable element and phage numbers observed between the two *wApol* draft genomes suggests that the genome sequences are incomplete.

Although the *wApol* drafts are likely not complete, functional annotation of genes by KAAS highlights that the biotin pathway is present, while it is absent in most other studied *Wolbachia* (Table S5). Indeed, only *wCle* (supergroup F), *wNfla*, *wNleu* (supergroup A), *wLug*, *wStri* and *wVulC* (supergroup B) have a complete biotin pathway. Only *bioC* is not detected in the *wApol* K5 draft, but the operon is detected on two contigs: the genes *bioA* and *bioD* on contig #258 and the genes *bioH*, *bioF* and *bioB* on contig #172 (Figure 3A). In all studied *Wolbachia* which contain the operon, the *bioC* gene is present between the *bioD* and *bioH* genes, so the absence could be due to the fragmentation of the *wApol* K5 draft sequence (Figure 3A). For the *wApol* K3 draft genome, only one contig (#148) containing *bioH*, *bioF* and *bioB* is

detected. The organization of the biotin operon appears to be conserved between all *Wolbachia* genomes which contain the complete pathway (Figure 3A). The phylogenies of the biotin genes (containing bioA, bioB, bioH, bioD and bioF) shows that the biotin operon of wApol K5 is more closely related to the operon of wCle (Figure 3B).

Multi-locus phylogenies and phylogenomics

The analysis of *Wolbachia* in *Geogarypus minor*, wGmin, was more complex. Two genes were sequenced for wGmin, *coxA* and *ftsZ*, and only nested PCR provided clean sequences to enable phylogenetic comparisons. The *Wolbachia* phylogeny, based on the two genes, identified two different sub-groups of *Wolbachia* in our samples (Figure 4A). The *Wolbachia* infecting *Chthonius ischnocheles*, wCisc, and *Geogarypus minor*, wGmin, group together and appear closely related to supergroup H *Wolbachia* infecting *Zootermopsis* termite species (wZneg and wZang). The *Wolbachia* from *Atemnus politus*, wApol, and the *Wolbachia* from *Cordylochernes scorpioides*, wCsco, form a clade which is divergent from known supergroups. This clade is a sister group to supergroup C *Wolbachia*, which contains the symbiont present in filarial nematodes (*Onchocerca* spp. and *Dirofilaria immitis*). The phylogeny based on six genes (16S rDNA, *ftsZ*, *dnaA*, *gatB*, *fbpA* and *coxA*) confirms the topology of wApol and wCisc (wGmin and wCsco not included) (Figure 4B). Our analysis shows the same topology for wApol sequences from the two draft genomes (K5 and K3) as well as sequences of wApol K5 amplified by PCR, confirming that the drafts did not introduce any bias. In addition, to verify the accuracy of the *Wolbachia* presence in *Geogarypus minor*, the *coxA* gene was sequenced from another specimen (III-J5) derived from an independent DNA extraction, and PCR amplification and the sequences were identical to another specimen III-T3 (accession number MT273088).

The *Wolbachia* from *Cordylochernes scorpioides* had been previously studied using a set of genes not routinely sequenced for *Wolbachia* evolutionary studies (*groEL*, *fabK*, *nuoG*, NADH dehydrogenase I subunit F, *aspS*, *gltA*, *coxA*, *ftsZ*, *wsp*, *orpB*, *nuoD*, isocitrate dehydrogenase gene, TPR domain-containing protein gene) [40]. We performed a multi-locus phylogeny based on these 13 genes, including wCsco and sequences isolated from available complete or draft genomes of *Wolbachia*, as well as those from the wApol produced draft genomes. The observed phylogeny shows that wCsco and wApol cluster together to form a separate clade, a closely related sister group to supergroup C, as observed with the phylogeny based on only two markers (Figure 4A). The two pseudoscorpions contain closely related *Wolbachia* strains, with 89.3% identity among these 13 genetic markers (Figure S1).

Two complete phylogenomic analyses were performed: one including 17 *Wolbachia* genomes representing 6 different supergroups and one including 38 *Wolbachia* genomes representing 7 different supergroups and including additional draft genome sequences. 320 single-copy orthologues were identified among the 17 *Wolbachia* genomes, while 166 were identified among the 38 *Wolbachia* genomes. The Maximum Likelihood phylogeny based on the reduced matrix (17 genomes, 320 orthologues, 89,847 amino-acid sites) (Figure 5A) and the one based on the larger matrix (38 *Wolbachia*,

167 orthologues, 40,488 amino-acid sites) (Figure 5B) indicates the *wApol* group does not cluster with any other *Wolbachia* group, suggesting it evolved from an independent separate speciation event. Based upon the phylogenomics analyses, *wApol* is closely related to supergroup C (symbionts within the filarial nematodes *Onchocerca* spp. and *Dirofilaria immitis*) and supergroup F (including both filarial and arthropods symbionts).

Discussion

Diversity of *Wolbachia* in pseudoscorpions

This study highlights diversity of *Wolbachia* harboured by pseudoscorpions. The studied specimens represent different, not closely related, families within pseudoscorpion diversity and contain distinct *Wolbachia*. The small number of pseudoscorpion species studied (3 among 3300 described species) represent only small snapshot of the diversity within this group (3 families among 27 described), suggesting that the diversity of *Wolbachia* among pseudoscorpion species may likely be an underestimate. The species *Geogarypus minor*, a representative of the Geogarypidae family and the species *Chthonius ischnocheles*, a representative of the Chthoniidae family, contain *Wolbachia* closely related to each other and related to supergroup H, as represented by termite *Wolbachia*. The species *Atemnus politus*, as a representative of the Atemnidae family, contains *Wolbachia* closely related to the *Wolbachia* from the previously described pseudoscorpion *Cordylochernes scorpioides* and forms a clade as a sister group to supergroup C (infecting exclusively filarial nematodes) and supergroup F (infecting filarial nematodes and arthropods). Within the evolutionary history of pseudoscorpions, at least two events of horizontal transfers of *Wolbachia* infection have apparently occurred. More detailed, biodiversity analysis of this group will be required to fully detail the evolutionary dynamics of their *Wolbachia*.

New supergroup S

The *Wolbachia* harboured by *Atemnus politus* (*wApol*) and *Cordylochernes scorpioides* (*wCsco*) form a clade divergent from those *Wolbachia* supergroups previously described (Figures S2 and S3). The analysis of the *wApol* draft genome using phylogenomic analysis (Figure 5), or ANI value (Figure 2) point out a divergent *Wolbachia* supergroup. It is important to distinguish the notion of “supergroup” from the notion of “species” (which remains problematic for bacteria [41]). The “supergroup” naming only describes the different evolutionary lineages (or clades) of *Wolbachia*, and their limits remain arbitrary (as far as it being a monophyletic group).

In the past, two *Wolbachia* supergroups had been designated and then revised based on further phylogenetic analysis. Supergroup G had been described as a clade of *Wolbachia* from spider *Diaea* species based on *wsp* marker analysis [42], however it was later demonstrated that the analysis based upon this marker sequence led to an incorrect conclusion due to recombination events between *Wolbachia* from supergroups A and B [26]. In the case of supergroup R, four genes (*ftsZ*, *coxA*, *groEL*, and 16S) were analyzed [25]. From among the four genes from the *Wolbachia* from the cave spider *Telema*

spp. within supergroup A, only the *groEL* marker gave a different topology. Upon reanalysis, the differing topology conclusion appears to be due to a G+C composition bias of the *groEL* gene, causing an incorrect phylogenetic analysis when based on nucleotide sequences [27]. Being aware of these, we created supplementary phylogenies based on 16S rRNA and *ftsZ* and have included numerous *Wolbachia* species to be sure that *wApol* and *wCsco* are not grouped with previously described *Wolbachia* supergroups (Figures S2 and S3).

To ensure that the draft genomes of *wApol* did not create an artificial clade, we further sequenced PCR amplicons from six previously studied marker genes from an independent specimen from the same set of samples as K5 and verified that the data provided the same topology. Based upon this confirmation, we propose that *Wolbachia* from *Atemnus politus* and *Cordylochernes scorpioides* constitute representatives of a new supergroup. To avoid any confusion, we propose not to reuse the previous supergroup R [27] designation and have assigned *Wolbachia* from the pseudoscorpion *Atemnus politus* and *Cordylochernes scorpioides* to a novel supergroup S.

***wApol* draft genomes and limitation of *de novo* assembly based on the enrichment method**

As a representative of supergroup S, the *Wolbachia* from *Atemnus politus*, *wApol*, two draft genomes, *wApol* K3 1,404,177 bp long and *wApol* K5, 1,445,964 bp long, were produced. These represent an average size for a *Wolbachia* genome from arthropods with the smallest complete *Wolbachia* genome being the symbiont from *Trichogramma pretiosum* (*wTpre*) which is 1,133,809 bp long [43] and the largest being the symbiont from *Folsomia candida* (*wFol*) which is 1,801,626 bp long [11]. The genomes of *Wolbachia* from filarial nematodes are smaller, between 957,990bp and 1,080,084bp [39, 44]. However, the two *wApol* draft genomes are fragmented, being in 200 contigs and 373 contigs, respectively. Due to limited material and despite an efficient probe hybridization enrichment, relatively few produced PacBio reads were produced due to the low DNA input which required pooling of barcoded samples. Based upon BUSCO, assessment of genome assembly indicates that the draft genomes *wApol* are probably incomplete. Despite its average size, the percentage of missing single-copy orthologs conserved among proteobacteria and *wApol* (or missing BUSCOs) (around 22% for K3 and 22.6% for K5) is close to the percentage observed for smaller genomes as *wOo* (22.6%; 957,990 bp), *wOv* (23.1; 960,618 bp) or *wPpe* (21.7%; 975,127bp). Further, the frequency of transposable elements (Group II intron-associated genes, mobile elements and IS) varies between the two drafts and lower than usually observed for *Wolbachia* from arthropods (Table S3). In addition, the long repetitive elements in a genome can limit the efficiency of *de novo* assembly following hybridization capture protocols, as shown with the *de novo* assembly of *wAlbB* (*Wolbachia* from *Aedes albopictus*), which contains a large numbers of long repetitive Group II intron-associated genes [36].

Since the first observation in *Wolbachia* from *Culex pipiens*, the presence of WO bacteriophage in *Wolbachia* has been well documented [45-48]. Not all *Wolbachia* genomes have intact prophage regions; only vestiges of prophage DNA were detected in *Wolbachia* genomes infecting nematodes belonging to D or L supergroups [15, 39, 44]. In the two *wApol* draft genomes, we identified several coding sequences

annotated as phage-like proteins, such as structural phage proteins (tail, portal phage, capsid genes) (Table S4). Although, the fragmented nature of the draft genomes limits interpretation, *wApol* has clearly been associated with WO bacteriophage, unlike supergroup C *Wolbachia* in which no structural phage proteins are found (Table S4) [39]. In addition, the presence of a prophage region appears to be a limitation for *de novo* genome assembly using the *Wolbachia* genome enrichment method, perhaps due to missing probes based upon the original design or the repetitive pattern of this region, a similar observation to that of the *wAlbB* genome assembly, which also failed to assemble the WO region [36].

Rare presence of biotin pathway in *Wolbachia*

Although it is difficult to conclude about the absence of a particular gene because the *wApol* draft genomes are likely incomplete, our study highlights the biotin pathway as being more complete in *wApol* than in numerous studied *Wolbachia*. Until recently, only *wCle* (*Wolbachia* from bedbug *Cimex lectularius*) contains a complete pathway for biotin (vitamin B7) [49]. More recently, a complete pathway for biotin was identified in *wNfla* and *wNleu* (supergroup A) [50], as well as in *wLug* and *wStri* (supergroup B) [51]. Interestingly, *wCle* provisions biotin (but not thiamin), which significantly contributes to the fitness of host bedbug [49]. In planthoppers, *wLug* and *wStri* *Wolbachia* appear to increase the fecundity of their hosts, which may be related to a beneficial effect of *Wolbachia*-synthesized biotin and riboflavin [51]. It is tempting to speculate that this pathway in *wApol* may also be important in the the association between *Wolbachia* and its pseudoscorpion hosts. From this analysis, we also identified the complete biotin pathway for *Wolbachia* from the isopod *Armadillidium vulgare* *wWulC* genome. The presence of the biotin operon among the *Wolbachia* appears rare, but when present, its physical organization appears conserved among them (Figure 3). Phylogenetic analysis of the biotin gene cluster supports the suggestion that the biotin operons were acquired by lateral transfer from endosymbiotic bacteria, such as *Cardinium* species, as previously suggested [50, 51]. The lack of congruence between the phylogeny of the biotin operons and *Wolbachia* phylogeny suggests multiple independent transfers of the operon within *Wolbachia* evolutionary history.

Conclusions

Our results emphasize the diversity of *Wolbachia* among the pseudoscorpion family. We identified infection with two different groups of *Wolbachia*, suggesting their independent evolutionary inheritance, likely via host-switching. Horizontal transmission of *Wolbachia* among insects has been previously documented [31, 52, 53] but this is the first time that a group of pseudoscorpions has been similarly analyzed. The *Wolbachia* symbiont from *Atemnus politus*, *wApol* is divergent from previous described supergroups and we propose a novel clade composed of *wApol* and *wCsco*, named supergroup S. The multi-locus phylogenies and phylogenomics indicate that the supergroup S is closely related to the supergroup F (which contains *Wolbachia* symbionts of arthropods and filarial nematodes) and supergroup C (comprised exclusively *Wolbachia* of filarial nematodes).

We produced two draft genomes of *wApol*, one of 200 contigs (1,404,177bp; K3) and the second of 373 contigs (1,445,964 bp; K5) using target enrichment capture. The genome sequences remain incomplete due to the low input of DNA, limiting the PacBio long read sequencing and due to the presence of large repetitive motifs and prophage region(s), previously demonstrated to interfere with complete genome assembly based on full *Wolbachia* genome capture enrichment.

Interestingly, the annotation of the *wApol* draft genome contains the biotin pathway, as opposed to its lack in most of other *Wolbachia*, while speculative, it might be suggested that *wApol* may provision biotin to their pseudoscorpion hosts, similar to *wCle* in its bedbug host or *wStri* and *wLug* in planthoppers. The nature of the pseudoscorpion-*Wolbachia* biology emphasizes the amazing complexity and evolutionary trajectories of these ubiquitous symbionts and provides the background for future comparative studies.

Methods

Abbreviations

bp(s): DNA nucleotide base pair(s)

CDS: Coding sequences

G + C: DNA nucleotides Guanine plus Cytosine

contig: continuous DNA segment

IS: DNA insertion element

nt: DNA nucleotide

PCR: polymerase chain reaction

Source of Material, DNA extraction and Characterization

Specimens were caught in the field using classical soil microfauna recovery methods using a Berlese-Tullgren funnel [42, 54]. The samples were collected at Montpellier in 2017 (43°37'52.0"N 3°52'04.6"E).

DNA samples were extracted using the Monarch® Genomic DNA Purification Kit following the recommended protocol for extraction from tissues (New England Biolabs (NEB), USA) with overnight incubation at 56°C with proteinase K. The quality of the extraction was verified by a PCR amplification of the host COI gene (Table S6). A total of 20 sequences were deposited in the GenBank Data Library: MN923050-MN923069 (Table S7).

Detection and molecular characterization of *Wolbachia* symbionts

The determination of *Wolbachia* infection in populations was determined by a series of individual specific PCRs (Table S1). The presence of *Wolbachia* was initially screened using PCR amplification of the *Wolbachia* surface protein (*wsp*) gene. The presence of *Wolbachia* was further confirmed using PCR amplification of the *gatB* gene for all specimens which tested positive for *wsp* amplification or for those giving dubious results, as well as a randomly selected set of specimens which were negative for *wsp* amplification.

The molecular characterization of *Wolbachia* was determined by PCR amplification of six genes (16S rDNA gene, *dnaA*, *coxA*, *fbpA*, *gatB* and *ftsZ*) as described in Lefoulon et al. [14] (Table S6). For some specimens, nested PCR amplification was necessary to obtain sufficient PCR product. A total of 14 sequences were deposited in the GenBank Data Library: MN931248 to MN931249, MN931689 to MN931700 and MT273088 (Table S8).

Next-Generation sequencing of *Atemnus politus*.

Atemnus politus specimens were selected for genomic analysis: K5 and K3, from the same location but collected at different times within the same year (respectively 5 April and 22 February 2017). The extracted DNAs were low (around 350ng total based on Nanodrop™ quantification Thermo Scientific, USA) and fragmented (average size around 6,000bp). In order to attain an amount of DNA necessary for the enrichment method, the DNA of the different specimens was individually barcoded and processed simultaneously, using SeqCap® barcoded adaptors (Roche NimbleGen, USA) (Table 1). Samples were not pooled to avoid concerns of potential *Wolbachia* strain differences. Four different libraries preparations were processed: one Illumina and one PacBio library with the *Wolbachia* DNA enrichment protocol, one Illumina and one PacBio library without enrichment to verify efficiency of the enrichment (Table 1). The enrichment method has been described by Lefoulon et al. [36] and it is based on the use of biotinylated probes to capture *Wolbachia* DNA (probes designed by Roche NimbleGen).

For PacBio sequencing (Pacific Biosciences, USA), the Large Enriched Fragment Targeted Sequencing (LEFT-SEQ) method, as previously described, was utilized [36] without the DNA fragmentation step. The PacBio library without enrichment was produced using the SMRTbell® Express Template Prep Kit 2.0 for Low DNA input, using the barcoded Overhang Adapter Kit- 8B (PacBio). The enriched PacBio library was sequenced using 2 SMRT cells with the PacBio RS II system and the library without enrichment used 1 SMRT cell, all on the PacBio Sequel I system.

For Illumina sequencing, a modified protocol was performed, which eliminated the last steps designed for the PacBio library protocol (end repair, ligation of PacBio adaptor and purification) and in which DNA was fragmented using NEBNext® Ultra™ II FS DNA Library Prep Kit (NEB) at 20°C for 30 minutes, resulting in DNA fragments with an average size of 350bp. We used 100ng of DNA per sample for each capture

and used SeqCap barcoded adaptors (Roche Nimblegen) to process simultaneous multiple samples. The Illumina library without enrichment was produced using the NEBNext® Ultra™ II FS DNA Library Prep Kit following the manufacturer's recommendations (NEB). The enriched Illumina library was sequenced on three independent Illumina MiSeq runs: one mate-pair 150bp read and two mate-pair 300bp reads. The unenriched Illumina library was sequenced with one, single-end, 150bp NextSeq run. All sequencing was performed at NEB.

***De novo* assembly pipeline**

Illumina reads were filtered by quality and "cleaned" using the wrapper Trim Galore! (https://www.bioinformatics.babraham.ac.uk/projects/trim_galore/), and then merged with PEAR [55]. PacBio circular consensus sequences (CCS) were generated using SMRT® pipe RS_ReadsOfInsert Protocol (PacBio) with a minimum 3 full passes and minimum predicted accuracy superior at 90. The adaptors were removed by trimming off the first and last 65 bp of the reads, any reads smaller than 20 bp, or reads containing residual adaptor sequences (potential chimeric reads) using seqtk (github.com/lh3/seqtk) (analyses were performed with an in-house shell script).

A first hybrid *de novo* assembly was done using Unicycler [56]. The potential contigs belonging to *Wolbachia* were detected by nucleotide similarity using blastn [57] and selected (similarity superior at 80%, bitscore superior at 50). The Illumina reads were mapped against this contig selection using Bowtie2 (with the very sensitive settings) [58] and the PacBio reads using ngmlr (with the PacBio preset settings) [59].

A second hybrid *de novo* assembly was performed using Unicycler with this new selection of reads. Selection of *Wolbachia* contigs was performed using blastn a second time (similarity superior at 80%, bitscore superior at 50) and then verified manually. Assembly statistics were calculated using QUAST [60].

Comparative genomic analyses and annotation of *wApol*

The comparative genomic analyses described below included analyses of 10 available complete genomes of *Wolbachia* and 4 draft genomes (Table S8): *wMel*, *Wolbachia* from *Drosophila Melanogaster* (NC_002978), *wCau*, *Wolbachia* from *Carposina sasakii* (CP041215) and *wNfla*, *Wolbachia* from *Nomada flava* (LYUW00000000) for supergroup A; *wPip*, *Wolbachia* from *Culex quinquefasciatus* (NC_010981), *wTpre*, *Wolbachia* from *Trichogramma pretiosum* (NZ_CM003641), *wLug*, *Wolbachia* from *Nilaparvata lugens*, *wStri* (MUIY01000000), *Wolbachia* from *Laodelphax striatella* (LRUH01000000) and *wVulC*, *Wolbachia* from *Armadillidium vulgare* (ALWU00000000) for supergroup B; *wPpe*, *Wolbachia* from *Pratylenchus penetrans* for supergroup L (NZ_MJMG01000000); *wCle*, *Wolbachia* from *Cimex lectularius* for supergroup F (NZ_AP013028); *wFol*, *Wolbachia* from *Folsomia candida* for supergroup E

(NZ_CP015510); *wBm*, *Wolbachia* from *Brugia malayi* (NC_006833) for supergroup D; *wOv* *Wolbachia* from *Onchocerca volvulus* (NZ_HG810405) and *wOo*, *Wolbachia* from *Onchocerca ochengi* (NC_018267) from supergroup C.

The Average Nucleotide Identity (ANI) between the *wApol* draft genomes and available complete genomes of *Wolbachia* was performed using the ANI Calculator [61]. The completeness of the draft genome was studied using BUSCO v3 [62]. BUSCO estimates the completeness of genomes analyzing gene content and comparing to selection of near-universal single-copy orthologue genes (here, 221 genes in common among proteobacteria (proteobacteria_odb9)).

The processed drafts were analyzed using RAST pipeline [63]. Transposable elements were identified: insertion sequences (ISs) using ISSAGA [64] and mobile element and group II introns using RAST pipeline. The phage-like proteins were identified using the RAST pipeline. KEGG Orthology (KO) assignment were generated using KAAS (KEGG Automatic Annotation Server [65]). KAAS assigned orthologue genes by blast comparison against KEGG genes database using BBH (bi-directional best hit) method. The same assignment analysis was performed for the *wApol* draft genome, the set of 14 complete or draft genomes and 1 supplementary draft genome: *wNleu*, *Wolbachia* from *Nomada eucophthalma* (LYUV00000000). The assigned KOs were ordered in 165 different KEGG pathways (Table S5). For the biotin operon, the amino-acid sequences were identified with the KAAS assignments of *wApol* and other studied *Wolbachia* genomes and the complete operons were identified using tblastn and then aligned.

Multi-locus phylogeny and Phylogenomics

Two multi-locus phylogenies were performed. The first phylogeny was based on six markers (16S rDNA, *dnaA*, *ftsZ*, *coxA*, *fbpA* and *gatB*), classically used for *Wolbachia* phylogeny [14, 66]. The produced sequences were analyzed with available sequences extracted from 49 *Wolbachia* complete or draft genomes and the addition of sequences from *Wolbachia* from *Zootermopsis angusticollis* and *Zootermopsis nevadensis* (Table S8). A supplementary analysis was based on thirteen markers (*groEL*, *fabK*, *nuoG*, *NADH dehydrogenase I subunit F*, *aspS*, *gltA*, *coxA*, *ftsZ*, *wsp*, *orpB*, *nuoD*, isocitrate dehydrogenase gene, TPR domain-containing protein gene) which includes less *Wolbachia* strains (because these markers were rarely used for phylogenetic analyses) but included the only *Wolbachia* known to infect pseudoscorpions, *Wolbachia* from the pseudoscorpion *Cordylochernes scorpioides* [34, 40]. This analysis included 14 complete genomes in addition to the *wApol* draft genome and *wCSCO* *Wolbachia* from *Cordylochernes scorpioides* (Table S8).

For phylogenomic analyses, single-copy orthologue genes among a selection of *Wolbachia* genomes were identified using Orthofinder [67]. Two types of phylogenomics studies were performed: one included only 15 complete genomes and one included 36 complete or draft genomes (Table S8). Differences in

completeness of draft genomes can be variable and have a negative effect on the robustness of the analyses, and thus the two separate analyses were performed.

The orthologue sequence alignments were generated by MAFFT [68]. For the multi-locus phylogenies, a supermatrix of these six alignments was generated using Seaview [69], and for phylogenomics, the supermatrix was produced by Orthofinder (implemented as functionality). For the later, the poorly aligned positions of the produced orthologue genes alignments were eliminated using Gblocks [70]. The phylogenetic analyses were performed with Maximum Likelihood inference using IQ-TREE [71]. The most appropriate model of evolution was evaluated by Modelfinder [72] (implemented as functionality of IQ-TREE). The robustness of each node was evaluated by a bootstrap test (1,000 replicates). The phylogenetic trees were edited by FigTree (<https://github.com/rambaut/figtree/>) and Inkscape (<https://inkscape.org/>).

Table

Table 1: Information for the *wApol* genome sequences.

		wApol K5	wApol K3
Before assembly	Illumina reads without enrichment	76,487,892	8,349,854
	Illumina reads with enrichment	8,714,832	7,422,205
	CCS PacBio reads without enrichment	13,467	2,091
	CCS PacBio reads with enrichment	2,032	13,070
Selection of reads mapped to the assembly	Illumina reads without enrichment	109,309 (0.4%)	166,537(1.99%)
	Illumina reads with enrichment	1,912,222 (18%)	1,428,179 (19.24%)
	CCS PacBio reads without enrichment	110 (0.8%)	35 (1.6%)
	CCS PacBio reads with enrichment	885 (40.9%)	3,343 (25.57%)
Draft genome assembly	Number of contigs	373	200
	Size of the largest contig	25,286	40,755
	Total length (bp)	1,445,964	1,404,177
	Contigs >= 10,000bp	28	43
	N50	5,741	10,346
	L50	73	40
	GC%	35.61	35.49
	Number of Coding Sequences	1746	2215
	Number of RNAs	39	45
BUSCO analysis	Complete BUSCOs %	70.2%	69%
	Fragmented BUSCOs %	7.2%	8.2%
	Missing BUSCOs %	22.6%	22%

Summary of *de novo* assembly processed in the current study using Unicycler: statistics using QUAST [60]; annotation using RAST [63] pipeline; assessment of the draft using BUSCO v3 [62].

Declarations

Ethics approval and consent to participate

Not applicable.

Consent for publication

Not applicable, no consent form required.

Availability of data and material

Data generated are available in GenBank: BioProject SUB6649337; BioSample SAMN13481355 for *Wolbachia* endosymbiont strain of *Atemnus* sp. Specimen K5 (genome: WQMQ00000000); BioSample SAMN14519337 for *Wolbachia* endosymbiont strain of *Atemnus* sp. Specimen K3 (genome: JAAXCS000000000). The raw data are available in GenBank as Sequence Read Archive (SRA): SRR10881598, SRR10881597. In addition, a total of 34 sequences were deposited in the GenBank: MN923050 to MN923069, MN931248 to MN931249 , MN931689 to MN931700 and MT273088.

Competing interests

EL and BS are employed by New England Biolabs, Inc., who provided funding for this project.

Funding

Funds provided by New England Biolabs, Inc, Internal research funding.

Author's contributions

E.L, L.G. and B.E.S. conceived and designed the experiments. E.L., T.C., M.P.S. and F.B. performed the experiments. E.L. and L.G. analyzed the data. L.G. and C.M. contributed materials. E.L., L.G. and B.E.S wrote the main manuscript text. All authors reviewed the manuscript.

Acknowledgments

We thank Mark Judson from MNHN for the confirmation of the morphological identification of the pseudoscorpion specimens. We thank Andy Gardner, Tom Evans, Rich Roberts and Don Comb from New England Biolabs for their support. We thank Laurie Mazzola, Danielle Fuchs and and Kristen Augulewicz from the NEB Sequencing Core. Supported by internal funding from NEB. We also thank anonymous reviewers for helpful and constructive comments.

References

1. Sironi M, Bandi C, Sacchi L, Di Sacco B, Damiani G, Genchi C: **Molecular evidence for a close relative of the arthropod endosymbiont Wolbachia in a filarial worm.** *Mol Biochem Parasitol* 1995, **74**(2):223-227.
2. Werren JH, Zhang W, Guo LR: **Evolution and phylogeny of Wolbachia: reproductive parasites of arthropods.** *Proc Biol Sci* 1995, **261**(1360):55-63.
3. Hilgenboecker K, Hammerstein P, Schlattmann P, Telschow A, Werren JH: **How many species are infected with Wolbachia?—A statistical analysis of current data.** *FEMS microbiology letters* 2008, **281**(2):215-220.
4. Zug R, Hammerstein P: **Still a host of hosts for Wolbachia: analysis of recent data suggests that 40% of terrestrial arthropod species are infected.** *PloS one* 2012, **7**(6):e38544.
5. Sazama EJ, Ouellette SP, Wesner JS: **Bacterial Endosymbionts Are Common Among, but not Necessarily Within, Insect Species.** *Environ Entomol* 2019, **48**(1):127-133.
6. Martin C, Gavotte L: **The bacteria Wolbachia in filariae, a biological Russian dolls' system: new trends in antifilarial treatments.** *Parasite* 2010, **17**(2):79-89.
7. Hoerauf A, Mand S, Volkmann L, Buttner M, Marfo-Debrekeyi Y, Taylor M, Adjei O, Buttner DW: **Doxycycline in the treatment of human onchocerciasis: Kinetics of Wolbachia endobacteria reduction and of inhibition of embryogenesis in female Onchocerca worms.** *Microbes Infect* 2003, **5**(4):261-273.
8. Werren JH, Baldo L, Clark ME: **Wolbachia: master manipulators of invertebrate biology.** *Nat Rev Microbiol* 2008, **6**(10):741-751.
9. Zug R, Hammerstein P: **Bad guys turned nice? A critical assessment of Wolbachia mutualisms in arthropod hosts.** *Biol Rev Camb Philos Soc* 2015, **90**(1):89-111.
10. Comandatore F, Cordaux R, Bandi C, Blaxter M, Darby A, Makepeace BL, Montagna M, Sasser D: **Supergroup C Wolbachia, mutualist symbionts of filarial nematodes, have a distinct genome structure.** *Open Biol* 2015, **5**(12):150099.
11. Kampfraath AA, Klasson L, Anvar SY, Vossen R, Roelofs D, Kraaijeveld K, Ellers J: **Genome expansion of an obligate parthenogenesis-associated Wolbachia poses an exception to the symbiont reduction model.** *BMC Genomics* 2019, **20**(1):106.
12. Bandi C, Anderson TJ, Genchi C, Blaxter ML: **Phylogeny of Wolbachia in filarial nematodes.** *Proc Biol Sci* 1998, **265**(1413):2407-2413.
13. Casiraghi M, Bain O, Guerrero R, Martin C, Pocacqua V, Gardner SL, Franceschi A, Bandi C: **Mapping the presence of Wolbachia pipientis on the phylogeny of filarial nematodes: evidence for symbiont loss during evolution.** *International journal for parasitology* 2004, **34**(2):191-203.
14. Lefoulon E, Bain O, Makepeace BL, d'Haese C, Uni S, Martin C, Gavotte L: **Breakdown of coevolution between symbiotic bacteria Wolbachia and their filarial hosts.** *PeerJ* 2016, **4**:e1840.

15. Brown AM, Wasala SK, Howe DK, Peetz AB, Zasada IA, Denver DR: **Genomic evidence for plant-parasitic nematodes as the earliest Wolbachia hosts.** *Sci Rep* 2016, **6**:34955.
16. Haegeman A, Vanholme B, Jacob J, Vandekerckhove TT, Claeys M, Borgonie G, Gheysen G: **An endosymbiotic bacterium in a plant-parasitic nematode: member of a new Wolbachia supergroup.** *Int J Parasitol* 2009, **39**(9):1045-1054.
17. Ferri E, Bain O, Barbuto M, Martin C, Lo N, Uni S, Landmann F, Baccei SG, Guerrero R, de Souza Lima S *et al.*: **New insights into the evolution of Wolbachia infections in filarial nematodes inferred from a large range of screened species.** *PLoS One* 2011, **6**(6):e20843.
18. Lefoulon E, Gavotte L, Junker K, Barbuto M, Uni S, Landmann F, Laaksonen S, Saari S, Nikander S, de Souza Lima S *et al.*: **A new type F Wolbachia from Splendidofilariinae (Onchocercidae) supports the recent emergence of this supergroup.** *International journal for parasitology* 2012, **42**(11):1025-1036.
19. Bordenstein S, Rosengaus RB: **Discovery of a novel Wolbachia super group in Isoptera.** *Curr Microbiol* 2005, **51**(6):393-398.
20. Glowska E, Dragun-Damian A, Dabert M, Gerth M: **New Wolbachia supergroups detected in quill mites (Acari: Syringophilidae).** *Infect Genet Evol* 2015, **30**:140-146.
21. Lo N, Casiraghi M, Salati E, Bazzocchi C, Bandi C: **How many wolbachia supergroups exist?** *Mol Biol Evol* 2002, **19**(3):341-346.
22. Lo N, Paraskevopoulos C, Bourtzis K, O'Neill SL, Werren JH, Bordenstein SR, Bandi C: **Taxonomic status of the intracellular bacterium Wolbachia pipientis.** *Int J Syst Evol Microbiol* 2007, **57**(Pt 3):654-657.
23. Ros VI, Fleming VM, Feil EJ, Breeuwer JA: **How diverse is the genus Wolbachia? Multiple-gene sequencing reveals a putatively new Wolbachia supergroup recovered from spider mites (Acari: Tetranychidae).** *Applied and environmental microbiology* 2009, **75**(4):1036-1043.
24. Rowley SM, Raven RJ, McGraw EA: **Wolbachia pipientis in Australian spiders.** *Curr Microbiol* 2004, **49**(3):208-214.
25. Wang GH, Jia LY, Xiao JH, Huang DW: **Discovery of a new Wolbachia supergroup in cave spider species and the lateral transfer of phage WO among distant hosts.** *Infection, genetics and evolution : journal of molecular epidemiology and evolutionary genetics in infectious diseases* 2016, **41**:1-7.
26. Baldo L, Werren JH: **Revisiting Wolbachia supergroup typing based on WSP: spurious lineages and discordance with MLST.** *Curr Microbiol* 2007, **55**(1):81-87.
27. Gerth M: **Classification of Wolbachia (Alphaproteobacteria, Rickettsiales): No evidence for a distinct supergroup in cave spiders.** *Infection, genetics and evolution : journal of molecular epidemiology and evolutionary genetics in infectious diseases* 2016, **43**:378-380.
28. Almerao MP, Fagundes NJ, de Araujo PB, Verne S, Grandjean F, Bouchon D, Araujo AM: **First record of Wolbachia in South American terrestrial isopods: Prevalence and diversity in two species of Balloniscus (Crustacea, Oniscidea).** *Genet Mol Biol* 2012, **35**(4 (suppl)):980-989.
29. Bouchon D, Rigaud T, Juchault P: **Evidence for widespread Wolbachia infection in isopod crustaceans: molecular identification and host feminization.** *Proc Biol Sci* 1998, **265**(1401):1081-

1090.

30. Badawi M, Moumen B, Giraud I, Greve P, Cordaux R: **Investigating the Molecular Genetic Basis of Cytoplasmic Sex Determination Caused by Wolbachia Endosymbionts in Terrestrial Isopods.** *Genes (Basel)* 2018, **9**(6).
31. Baldo L, Ayoub NA, Hayashi CY, Russell JA, Stahlhut JK, Werren JH: **Insight into the routes of Wolbachia invasion: high levels of horizontal transfer in the spider genus Agelenopsis revealed by Wolbachia strain and mitochondrial DNA diversity.** *Molecular ecology* 2008, **17**(2):557-569.
32. Baldo L, Prendini L, Corthals A, Werren JH: **Wolbachia are present in southern african scorpions and cluster with supergroup F.** *Curr Microbiol* 2007, **55**(5):367-373.
33. Weygoldt P: **[Mating behavior and semen transmission in the pseudoscorpion Withius subruber Simon (Cheliferidae)].** *Zeitschrift fur Tierpsychologie* 1969, **26**(2):230-235.
34. Zeh DW, Zeh JA, Bonilla MM: **Wolbachia, sex ratio bias and apparent male killing in the harlequin beetle riding pseudoscorpion.** *Heredity (Edinb)* 2005, **95**(1):41-49.
35. Geniez S, Foster JM, Kumar S, Moumen B, Leproust E, Hardy O, Guadalupe M, Thomas SJ, Boone B, Hendrickson C *et al*: **Targeted genome enrichment for efficient purification of endosymbiont DNA from host DNA.** *Symbiosis* 2012, **58**(1-3):201-207.
36. Lefoulon E, Vaisman N, Frydman HM, Sun L, Foster JM, Slatko BE: **Large Enriched Fragment Targeted Sequencing (LEFT-SEQ) Applied to Capture of Wolbachia Genomes.** *Sci Rep* 2019, **9**(1):5939.
37. Gardini G, Galli L, Zinni M: **Redescription of Geogarypus minor, type species of the genus Geogarypus, and description of a new species from Italy (Pseudoscorpiones: Geogarypidae).** *Journal of Arachnology* 2017, **45**(3):424-443.
38. Kotrbova J, Opatova V, Gardini G, Stahlavsky F: **Karyotype diversity of pseudoscorpions of the genus Chthonius (Pseudoscorpiones, Chthoniidae) in the Alps.** *Comp Cytogenet* 2016, **10**(3):325-345.
39. Darby AC, Armstrong SD, Bah GS, Kaur G, Hughes MA, Kay SM, Koldkjaer P, Radford AD, Blaxter ML, Tanya VN *et al*: **Analysis of gene expression from the Wolbachia genome of a filarial nematode supports both metabolic and defensive roles within the symbiosis.** *Genome Res* 2012:doi: 10.1242/bio.2012737.
40. Bordenstein SR, Paraskevopoulos C, Dunning Hotopp JC, Sapountzis P, Lo N, Bandi C, Tettelin H, Werren JH, Bourtzis K: **Parasitism and mutualism in Wolbachia: what the phylogenomic trees can and cannot say.** *Molecular biology and evolution* 2009, **26**(1):231-241.
41. Chung M, Munro JB, Tettelin H, Dunning Hotopp JC: **Using Core Genome Alignments To Assign Bacterial Species.** *mSystems* 2018, **3**(6).
42. Sabu TK, Shiju RT, Vinod K, Nithya S: **A comparison of the pitfall trap, Winkler extractor and Berlese funnel for sampling ground-dwelling arthropods in tropical montane cloud forests.** *J Insect Sci* 2011, **11**:28.
43. Lindsey AR, Werren JH, Richards S, Stouthamer R: **Comparative Genomics of a Parthenogenesis-Inducing Wolbachia Symbiont.** *G3 (Bethesda)* 2016, **6**(7):2113-2123.

44. Foster J, Ganatra M, Kamal I, Ware J, Makarova K, Ivanova N, Bhattacharyya A, Kapatral V, Kumar S, Posfai J *et al*: **The Wolbachia genome of Brugia malayi: endosymbiont evolution within a human pathogenic nematode.** *PLoS biology* 2005, **3**(4):e121.
45. Fujii Y, Kubo T, Ishikawa H, Sasaki T: **Isolation and characterization of the bacteriophage WO from Wolbachia, an arthropod endosymbiont.** *Biochem Biophys Res Commun* 2004, **317**(4):1183-1188.
46. Gavotte L, Henri H, Stouthamer R, Charif D, Charlat S, Bouletreau M, Vavre F: **A Survey of the bacteriophage WO in the endosymbiotic bacteria Wolbachia.** *Mol Biol Evol* 2007, **24**(2):427-435.
47. Masui S, Kuroiwa H, Sasaki T, Inui M, Kuroiwa T, Ishikawa H: **Bacteriophage WO and virus-like particles in Wolbachia, an endosymbiont of arthropods.** *Biochem Biophys Res Commun* 2001, **283**(5):1099-1104.
48. Wright JD, Sjostrand FS, Portaro JK, Barr AR: **The ultrastructure of the rickettsia-like microorganism Wolbachia pipientis and associated virus-like bodies in the mosquito Culex pipiens.** *J Ultrastruct Res* 1978, **63**(1):79-85.
49. Nikoh N, Hosokawa T, Moriyama M, Oshima K, Hattori M, Fukatsu T: **Evolutionary origin of insect-Wolbachia nutritional mutualism.** *Proc Natl Acad Sci U S A* 2014, **111**(28):10257-10262.
50. Gerth M, Bleidorn C: **Comparative genomics provides a timeframe for Wolbachia evolution and exposes a recent biotin synthesis operon transfer.** *Nat Microbiol* 2016, **2**:16241.
51. Ju JF, Bing XL, Zhao DS, Guo Y, Xi Z, Hoffmann AA, Zhang KJ, Huang HJ, Gong JT, Zhang X *et al*: **Wolbachia supplement biotin and riboflavin to enhance reproduction in planthoppers.** *ISME J* 2019.
52. O'Neill SL, Giordano R, Colbert AM, Karr TL, Robertson HM: **16S rRNA phylogenetic analysis of the bacterial endosymbionts associated with cytoplasmic incompatibility in insects.** *Proc Natl Acad Sci U S A* 1992, **89**(7):2699-2702.
53. Gerth M, Rothe J, Bleidorn C: **Tracing horizontal Wolbachia movements among bees (Anthophila): a combined approach using multilocus sequence typing data and host phylogeny.** *Mol Ecol* 2013, **22**(24):6149-6162.
54. Kaydan MB, Benedicty ZK, Kiss B, Szita E: **A survey of scale insects in soil samples from Europe (Hemiptera, Coccothraupidae).** *Zookeys* 2016(565):1-28.
55. Zhang J, Kobert K, Flouri T, Stamatakis A: **PEAR: a fast and accurate Illumina Paired-End read mergeR.** *Bioinformatics* 2014, **30**(5):614-620.
56. Wick RR, Judd LM, Gorrie CL, Holt KE: **Unicycler: Resolving bacterial genome assemblies from short and long sequencing reads.** *PLoS Comput Biol* 2017, **13**(6):e1005595.
57. Camacho C, Coulouris G, Avagyan V, Ma N, Papadopoulos J, Bealer K, Madden TL: **BLAST+: architecture and applications.** *BMC Bioinformatics* 2009, **10**:421.
58. Langmead B, Salzberg SL: **Fast gapped-read alignment with Bowtie 2.** *Nat Methods* 2012, **9**(4):357-359.
59. Sedlazeck FJ, Rescheneder P, Smolka M, Fang H, Nattestad M, von Haeseler A, Schatz MC: **Accurate detection of complex structural variations using single-molecule sequencing.** *Nat Methods* 2018,

15(6):461-468.

60. Gurevich A, Saveliev V, Vyahhi N, Tesler G: **QUAST: quality assessment tool for genome assemblies.** *Bioinformatics* 2013, **29**(8):1072-1075.
61. Yoon SH, Ha SM, Lim J, Kwon S, Chun J: **A large-scale evaluation of algorithms to calculate average nucleotide identity.** *Antonie Van Leeuwenhoek* 2017, **110**(10):1281-1286.
62. Seppey M, Manni M, Zdobnov EM: **BUSCO: Assessing Genome Assembly and Annotation Completeness.** *Methods Mol Biol* 2019, **1962**:227-245.
63. Aziz RK, Bartels D, Best AA, DeJongh M, Disz T, Edwards RA, Formsma K, Gerdes S, Glass EM, Kubal M *et al*: **The RAST Server: rapid annotations using subsystems technology.** *BMC genomics* 2008, **9**:75.
64. Varani AM, Siguier P, Gourbeyre E, Charneau V, Chandler M: **ISSaga is an ensemble of web-based methods for high throughput identification and semi-automatic annotation of insertion sequences in prokaryotic genomes.** *Genome Biol* 2011, **12**(3):R30.
65. Moriya Y, Itoh M, Okuda S, Yoshizawa AC, Kanehisa M: **KAAS: an automatic genome annotation and pathway reconstruction server.** *Nucleic Acids Res* 2007, **35**(Web Server issue):W182-185.
66. Baldo L, Dunning Hotopp JC, Jolley KA, Bordenstein SR, Biber SA, Choudhury RR, Hayashi C, Maiden MC, Tettelin H, Werren JH: **Multilocus sequence typing system for the endosymbiont *Wolbachia pipientis*.** *Applied and environmental microbiology* 2006, **72**(11):7098-7110.
67. Emms DM, Kelly S: **OrthoFinder: solving fundamental biases in whole genome comparisons dramatically improves orthogroup inference accuracy.** *Genome Biol* 2015, **16**:157.
68. Katoh K, Misawa K, Kuma K, Miyata T: **MAFFT: a novel method for rapid multiple sequence alignment based on fast Fourier transform.** *Nucleic Acids Res* 2002, **30**(14):3059-3066.
69. Gouy M, Guindon S, Gascuel O: **SeaView version 4: A multiplatform graphical user interface for sequence alignment and phylogenetic tree building.** *Mol Biol Evol* 2010, **27**(2):221-224.
70. Talavera G, Castresana J: **Improvement of phylogenies after removing divergent and ambiguously aligned blocks from protein sequence alignments.** *Syst Biol* 2007, **56**(4):564-577.
71. Nguyen LT, Schmidt HA, von Haeseler A, Minh BQ: **IQ-TREE: a fast and effective stochastic algorithm for estimating maximum-likelihood phylogenies.** *Mol Biol Evol* 2015, **32**(1):268-274.
72. Kalyaanamoorthy S, Minh BQ, Wong TKF, von Haeseler A, Jermini LS: **ModelFinder: fast model selection for accurate phylogenetic estimates.** *Nat Methods* 2017, **14**(6):587-589.

Supplementary Figure Legends

Figure S1: Unrooted phylogenetic trees of *Wolbachia* based on 13 markers by Maximum Likelihood. Analysis based on concatenation of *groEL*, *fabK*, *nuoG*, NADH dehydrogenase I subunit F, *aspS*, *gltA*, *coxA*, *ftsZ*, *wsp*, *orpB*, *nuoD*, *isocitrate dehydrogenase* gene and the TPR domain-containing protein gene. The total length of the dataset is 6,461bp. The topology was inferred using Maximum Likelihood (ML) inference using IQ-TREE [71]. The Best-fit model, calculated using ModelFinder according to BIC index,

was GTR+R3. Nodes are associated with Bootstrap values based on 1,000 replicates and only bootstrap value superior to 70 are indicated. The *Wolbachia* supergroups (A–S) are indicated.

Figure S2: Phylogeny of *Wolbachia* based on the 16S ribosomal RNA gene. Analysis based on alignment of 101 16S rRNA sequences of the total length of 445bp. The topology was inferred using Maximum Likelihood (ML) inference using IQ-TREE [71]. The Best-fit model, calculated using ModelFinder according to BIC index, was K2P+R2. Nodes are associated with Bootstrap values based on 1,000 replicates.

Figure S3: Phylogeny of *Wolbachia* based on the *ftsZ* gene. Analysis based on alignment of 95 *ftsZ* sequences of the total length of 779bp. The topology was inferred using Maximum Likelihood (ML) inference using IQ-TREE [71]. The Best-fit model, calculated using ModelFinder according to BIC index, was TIM3+G4. Nodes are associated with Bootstrap values based on 1,000 replicates.

Figures

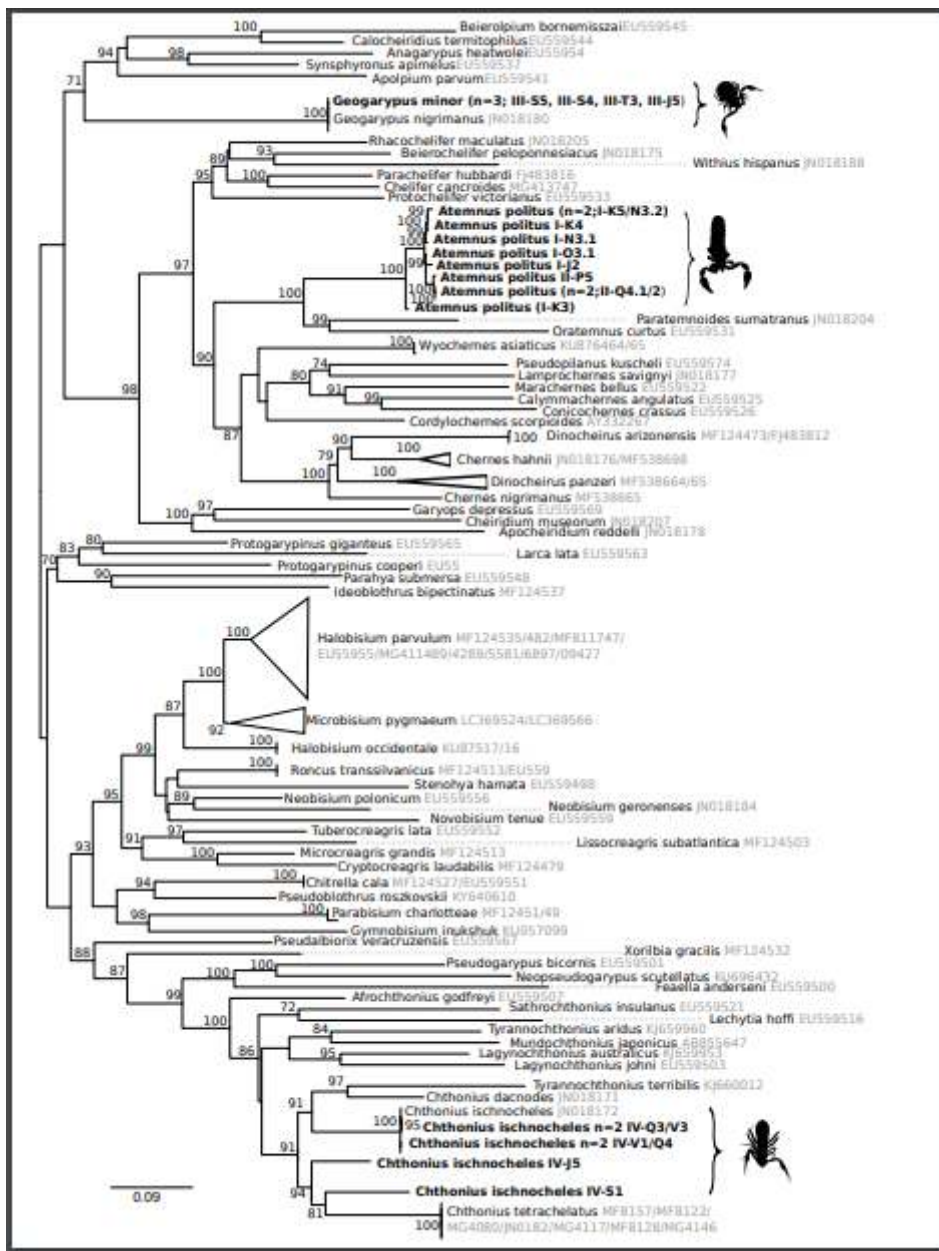


Figure 1

Phylogenetic tree of pseudoscorpions based on the COI (mitochondrial cytochrome oxidase I) gene. The total length of datasets is 659 bp. The topology was inferred using Maximum Likelihood (ML) inference using IQTREE [71]. The Best-fit model calculated using ModelFinder according to BIC index was TVM+R7. Nodes are associated with Bootstrap values based on 1,000 replicates, only bootstrap values superior to 70 are indicated.

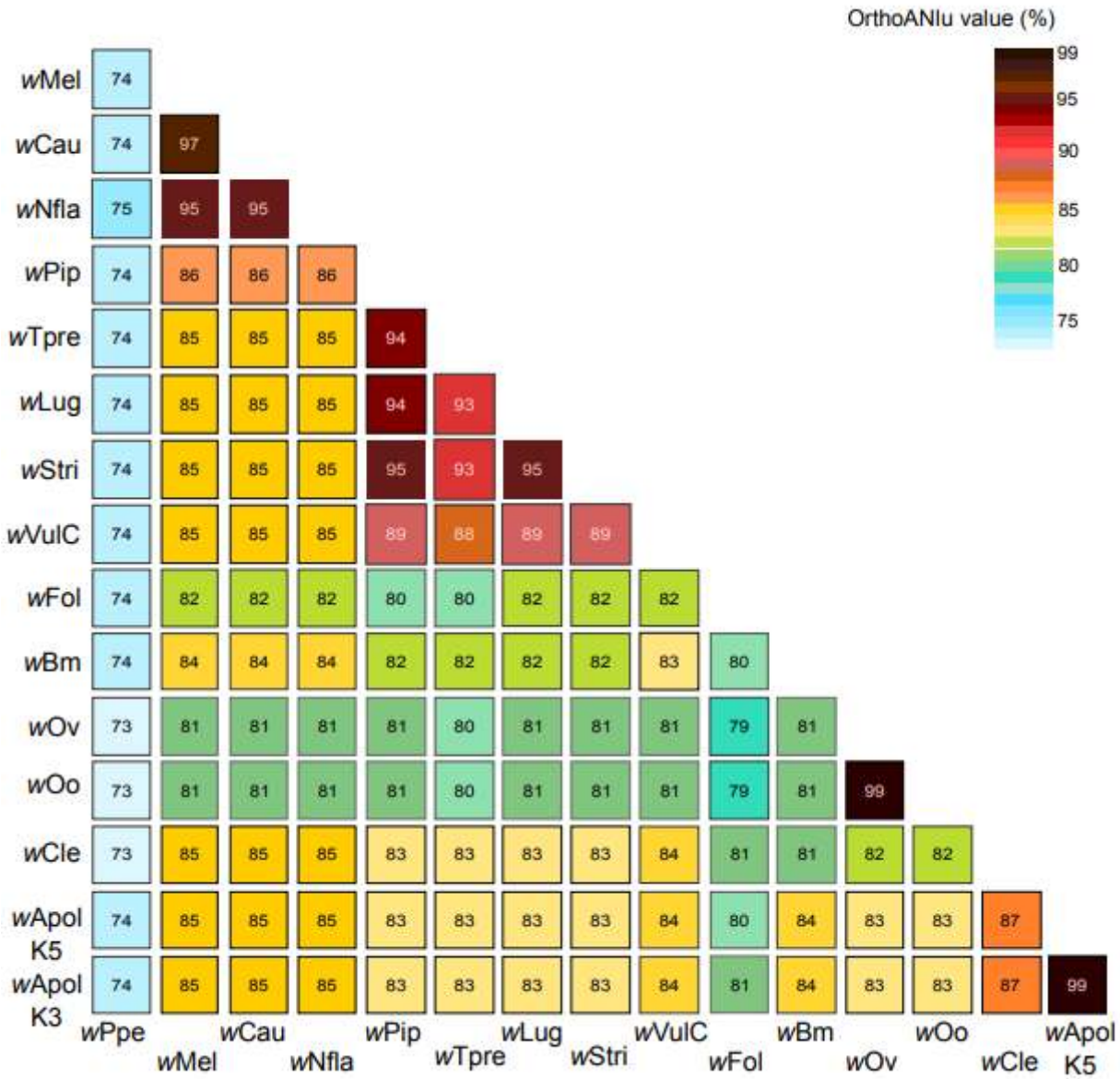


Figure 2

Summary of ANI calculations for Wolbachia genomes. The Average Nucleotide Identity (ANI) between the wApol draft genomes and 13 complete genomes of Wolbachia evaluated using the ANI Calculator [61].

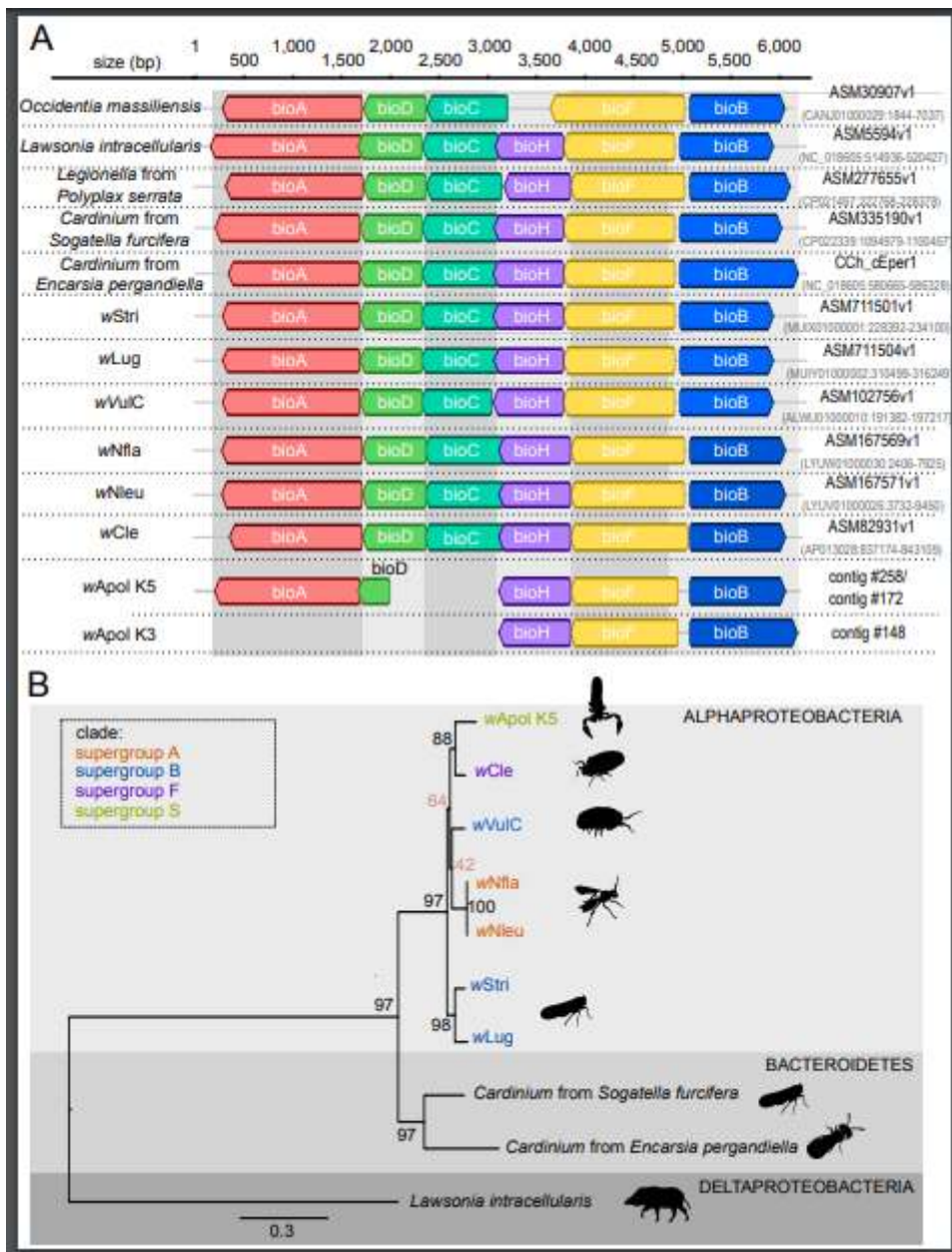


Figure 3

Organization and molecular analysis of the biotin operons of Wolbachia. A) Organization of the biotin operon. The operons among the Wolbachia and four outgroups were identified and then aligned using MAFFT [68]. B) Phylogeny of the biotin operon (concatenation of contig containing bioA and bioD with the contig containing bioH, bioF and bioB). The length of datasets is 4,603bp. The topology was inferred using Maximum Likelihood (ML) inference using IQ-TREE [71]. The Best-fit model calculated using ModelFinder according to AIC index was TVM+I+G4. Nodes are associated with Bootstrap values based on 1,000 replicates. The Wolbachia supergroups are indicated by the color: purple for supergroup F; dark blue for supergroup A; orange for supergroup A and green for supergroup S.

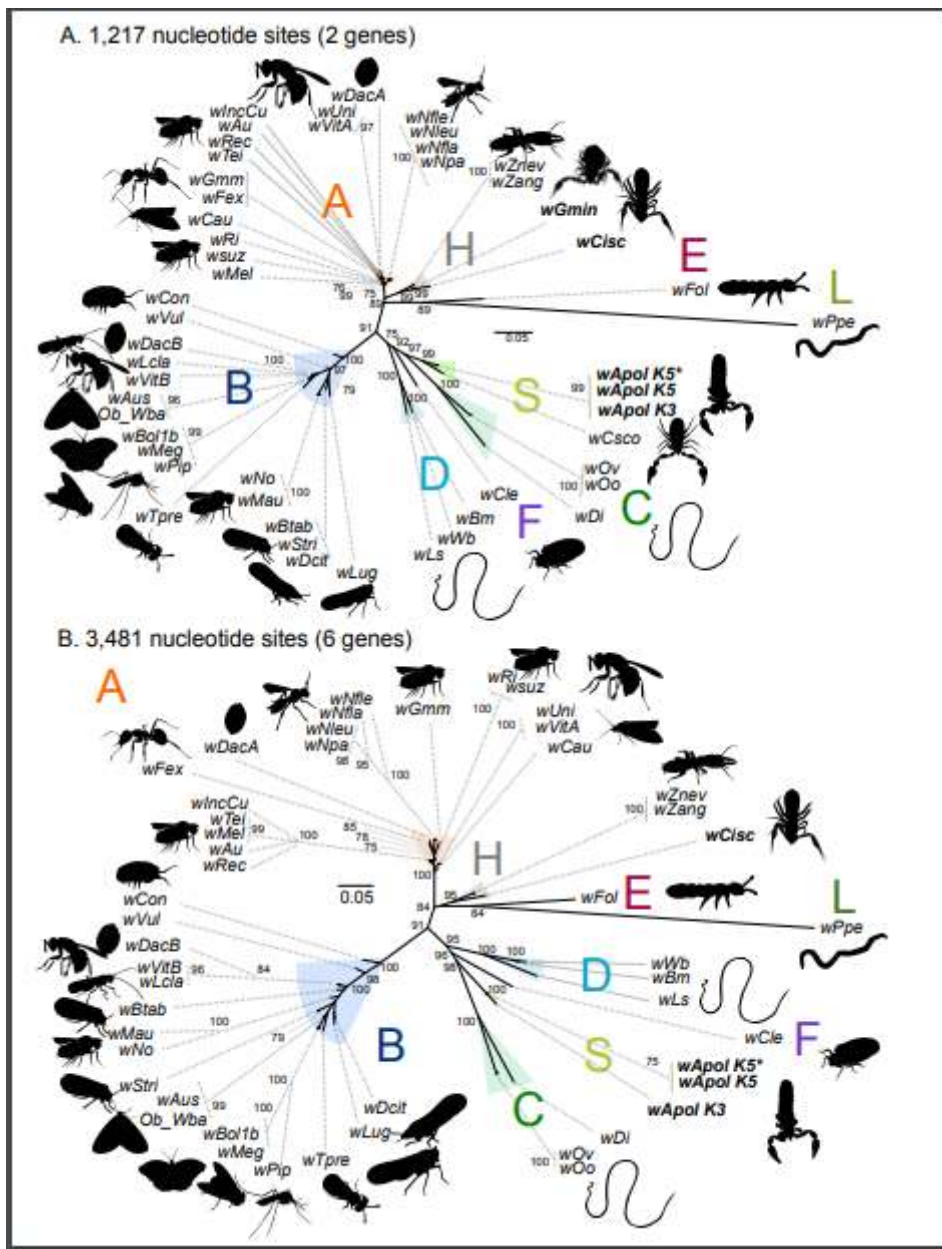


Figure 4

Unrooted phylogenetic trees of *Wolbachia* based on 2 and 6 markers by Maximum Likelihood. A) Analysis based on concatenation of *ftsZ* and *coxA*; the total length of datasets is 1,217bp. The topology was inferred using Maximum Likelihood (ML) inference using IQ-TREE [71]. The Best-fit model calculated using ModelFinder according to BIC index was TIM3+I+G4. B) Analysis based on concatenation of 16S rDNA, *dnaA*, *ftsZ*, *coxA*, *fbpA* and *gatB*; the total length of datasets is 3,481bp. The Best-fit model calculated using ModelFinder according to BIC index was GTR+I+G4. Nodes are associated with Bootstrap values based on 1,000 replicates, only bootstrap value superior to 70 are indicated. The *Wolbachia* supergroups (A–S) are indicated. The bolded names indicate data produced in this study and in the case of *wApol*, the asterisk (*) indicates sequences produced by PCR amplification.

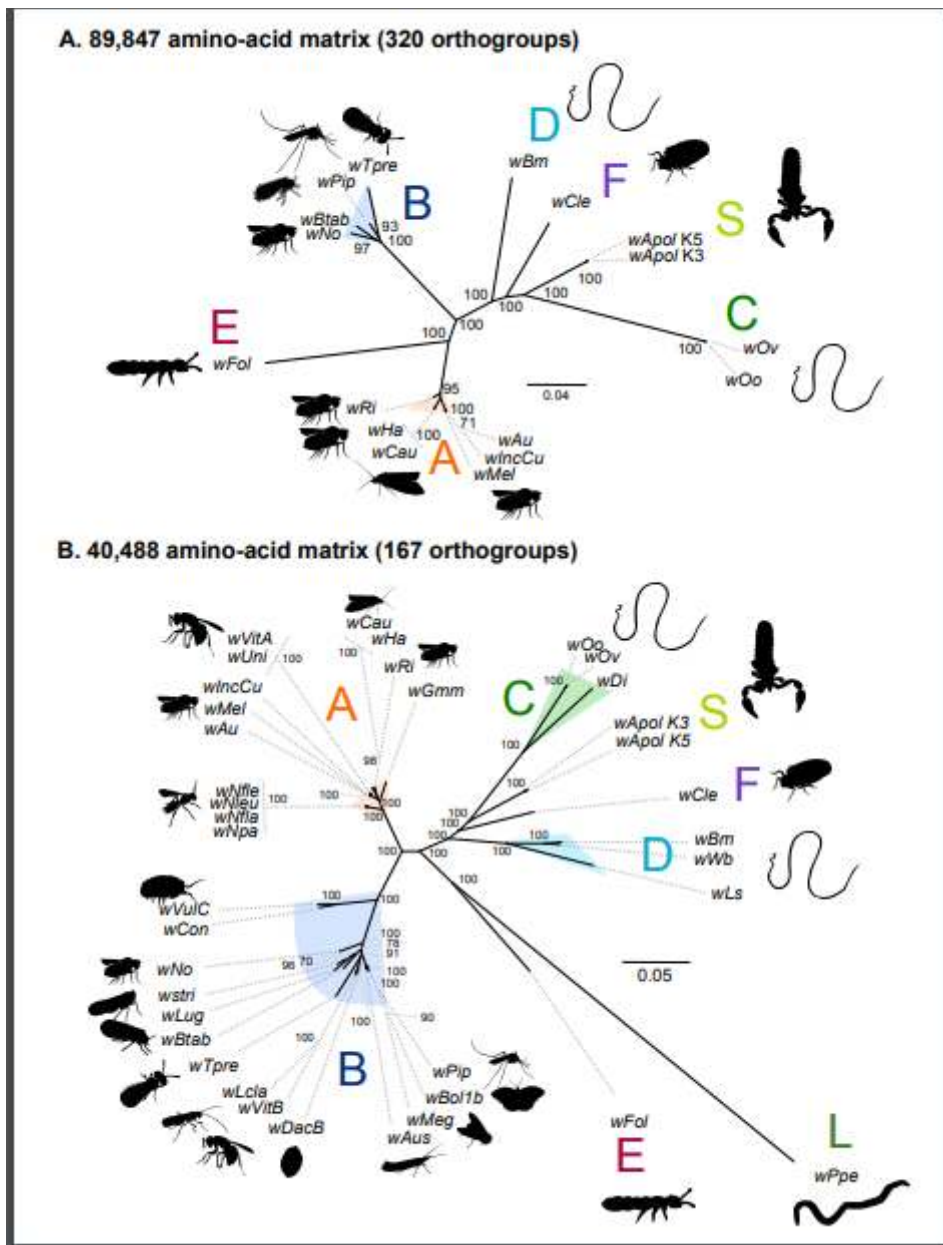


Figure 5

Phylogenomics analyses of *Wolbachia*. A) Analysis based on concatenation of 320 single-copy orthogroups representing an 89,847 amino-acid matrix. The topology was inferred using Maximum Likelihood (ML) inference using IQTREE [71]. The Best-fit model calculated using ModelFinder according to BIC index was JTT+F+I+G4) Analysis based on concatenation of 167 single-copy orthogroups representing 40,488 amino-acid matrix. The Best-fit model calculated using ModelFinder according to BIC index was JTT+F+I+G4. Nodes are associated with Bootstrap values based on 1,000 replicates, only bootstrap value superior to 70 are indicated. The *Wolbachia* supergroups (A–S) are indicated.

Supplementary Files

This is a list of supplementary files associated with this preprint. Click to download.

- [revFigureS3.pdf](#)
- [revTableS7accessionnumber1.xlsx](#)
- [revTableS8accessionnumber2.xlsx](#)
- [revFigureS1.pdf](#)
- [revTableS6PCRcondition.xlsx](#)
- [revFigureS2.pdf](#)
- [revTableS5KASS10411.xlsx](#)
- [revTableS3transposableelements.xlsx](#)
- [revTableS1popInfection0411.xlsx](#)
- [revTableS4phagelike.xlsx](#)
- [revTableS2Busco0411.xlsx](#)