



Psychological Predictors of Energy Saving Behavior: A Meta-Analytic Approach

Giuseppe Carrus^{1*}, Lorenza Tiberio¹, Stefano Mastandrea¹, Parissa Chokrai², Immo Fritsche², Christian A. Klöckner³, Torsten Masson², Stepan Vesely³ and Angelo Panno⁴

¹ Department of Education, Experimental Psychology Laboratory, Roma Tre University, Rome, Italy, ² Department of Social Psychology, Institute of Psychology, University of Leipzig, Leipzig, Germany, ³ Department of Psychology, Faculty of Social and Educational Sciences, Norwegian University of Science and Technology, Trondheim, Norway, ⁴ Department of Human Science, European University of Rome, Rome, Italy

Understanding how psychological processes drive human energy choices is an urgent, and yet relatively under-investigated, need for contemporary society. A knowledge gap still persists on the links between psychological factors identified in earlier studies and people's behaviors in the energy domain. This research applies a meta-analytic procedure to assess the strength of the associations between five different classes of individual variables (i.e., attitudes, intentions, values, awareness, and emotions) and energy-saving behavioral intentions and behaviors (self-reported and actual). Based on a systematic review of studies published between 2007 and 2017, we estimate the average effect size of predictor-criterion relations, and we assess relevant moderators and publication bias, drawing on data obtained from 102 independent samples reported in 67 published studies ($N = 59,948$). Results from a series of five single meta-analyses reveal a pattern of significant positive associations between the selected psychological determinants and energy-saving indicators: associations between individual-level predictors and energy-saving outcomes are positive and moderate in size, ranging from large effects for emotions to small-moderate effects for pro-environmental values. Interestingly, moderation analysis reveals, among other things, that attitude-behavior links are not statistically significant when actual behavior is considered as an outcome. Implications for policy interventions are discussed.

Keywords: meta-analysis, energy saving behaviors, attitudes, intentions, values, awareness, emotions

INTRODUCTION

Climate change is currently a central part of the global energy debate and public discourse. Climate scientists agree that climate change is caused by the considerable increase in the concentration of greenhouse gases in the atmosphere, directly or indirectly attributable to humans' use of fossil fuels. It is therefore necessary to underline the need to change our energy consumption behaviors not only individually, but also collectively. From the point of view of environmental psychological science, addressing climate change is considered as a fundamental challenge, which requires a deep understanding of the psychological processes involved in both pro-environmental behaviors and lifestyles in general, and human energy consumption in particular (e.g., Clayton, 2020; Hartig, 2020; Bouman and Steg, 2020).

OPEN ACCESS

Edited by:

Victor Corral-Verdugo,
University of Sonora, Mexico

Reviewed by:

César O. Tapia-Fonllem,
University of Sonora, Mexico
Bernardo Hernández,
University of La Laguna, Spain

*Correspondence:

Giuseppe Carrus
giuseppe.carrus@uniroma3.it

Specialty section:

This article was submitted to
Environmental Psychology,
a section of the journal
Frontiers in Psychology

Received: 31 December 2020

Accepted: 10 May 2021

Published: 24 June 2021

Citation:

Carrus G, Tiberio L, Mastandrea S, Chokrai P, Fritsche I, Klöckner CA, Masson T, Vesely S and Panno A (2021) Psychological Predictors of Energy Saving Behavior: A Meta-Analytic Approach. *Front. Psychol.* 12:648221. doi: 10.3389/fpsyg.2021.648221

The purpose of this paper is to present an overarching view of published empirical research on the relation between psychological factors and energy-related choices and behaviors. We argue here that a meta-analytical study of this kind could be useful for both scientists and decision makers in the energy domain and contribute to build on the currently available knowledge on the human dimension of the sustainable energy transition (e.g., Steg et al., 2015; Tiberio et al., 2020). Some interesting systematic reviews and meta-analyses on these issues have recently appeared, highlighting for example the role of identity variables on a wide range of pro-environmental behaviors, which include, but are not limited to, energy-related ones (e.g., Fritsche et al., 2018). Other works have attempted to focus more specifically on energy-saving behaviors, mostly through systematic literature reviews, in order to identify the general factors that might influence them (including psychological determinants: see for example Steg, 2008; Yang et al., 2016). Other contributions assessed the effects of behavioral intervention strategies (e.g., Abrahamse et al., 2005; Abrahamse and Steg, 2013; Delmas et al., 2013; Karlin et al., 2015; Andor and Fels, 2018; Bergquist et al., 2019; Nisa et al., 2019; Buckley, 2020). However, apart from some notable comprehensive overviews (e.g., Steg et al., 2015) or broader contributions (van Valkengoed and Steg, 2019), to our knowledge, there are no recent meta-analyses or systematic reviews that have focused on the direct psychological predictors of energy-related behaviors. Therefore, drawing on literature from a broad spectrum of studies across psychological sciences, in this paper we identify five categories of psychological variables that have been acknowledged in previous studies as key factors for explaining variability in energy-saving behavior. Individual level factors such as ecological attitudes, pro-environmental values, awareness of consequences of one's behavior and beliefs in climate change, emotions, and intentions to adopt energy-saving solutions have been frequently considered as potential antecedents of energy-saving behaviors. In this paper, we use a meta-analytical procedure to assess the strength of the associations between five different classes of individual psychological variables (i.e.: attitudes, values, intentions, awareness, and emotions) and energy-saving behavioral behaviors (self-reported and actual). To conduct such a meta-analysis, the goal of our literature search was to identify published empirical studies that examined the links between attitudes, intentions, values, awareness and emotions on the one hand, and people's observed and actual behaviors in the energy domain, on the other hand. In this work, the intention to adopt energy-saving solutions has been considered both as predictor of self-reported and actual energy-saving behavior, or as an outcome, when either self-reported or actual behavior were not available in the primary studies considered. Indeed, a large number of studies use intentions as their only outcome of antecedent factors aimed to explain the adoption of energy-saving solutions, assuming that it can be considered as a reliable proxy of behavior in the energy domain.

In the next sections we briefly review the literature behind each of these classes of predictors, and we present and discuss the results of the meta-analytical tests conducted.

THEORETICAL BACKGROUND

Attitudes

The main reason for studying environmental attitudes in the field of energy saving behavior is related to the well-known attitude-behavior link in social psychology. Positive attitudes toward a specific environmental issue (e.g., climate change) were found to be associated to behavioral intention in that same domain (e.g., Poortinga et al., 2004). Widely used theories and models, such as the Theory of Planned Behavior (TPB; Ajzen, 1991) have explained the attitude-behavior link, and the circumstances under which it occurs, both in general (Manstead, 1996) and in the environmental domain in particular (Staats, 2003). In the specific energy-related domain, the TPB framework has been applied to analyse both individual's energy saving behaviors as well as the acceptance of renewable energy technologies (Abrahamse and Steg, 2011; Wang et al., 2011; Alam and Rashid, 2012). Studies in this field report a positive association between attitudes toward electric cars and different adoption indicators (Moons and De Pelsmacker, 2012; Nayum and Klöckner, 2014; Barbarossa et al., 2015; Degirmenci and Breitner, 2017).

While numerous studies suggest a strong association between attitudes and behavior in the environmental domain, other authors highlight the poor predictability of behavior from attitudes; this inconsistency is usually referred to as the attitude-behavior gap (Gifford and Sussman, 2012). A possible explanation of this discrepancy lies in the choice of the methods of collecting behavioral data. The most common method in social research is self-reported behavior, through questionnaires and other measures that frequently do not reflect the actual adoption of a behavior and are more subject to a social desirability bias (Gifford and Sussman, 2012). This aspect suggests the plausibility of moderating factors intervening in the relation between attitudes and behaviors in the energy domain such as the actual vs. self-report measurement method.

Intentions

Behavioral intention is commonly assumed to be an immediate antecedent of behavior (Ajzen, 1991), although that does not mean that intentions always predict behaviors (e.g., Sheeran, 2002; Webb and Sheeran, 2006; Frederiks et al., 2015). Intention serves as a presupposition of favorable energy-saving choices and encompasses the likelihood of a specific course of action, such as for example purchasing a particular energy-efficient product or adopting specific energy-saving solutions as a result of environmental needs.

Energy-related intentions were in fact seen to have a moderate positive association with energy efficiency behaviors (e.g., Zierler et al., 2017). Afroz et al. (2015a) found a link between intention and behavior in the purchase of environmentally friendly vehicles. A moderate, although indirect, effect of behavioral intention was found also on purchase decisions in relation to LED technology adoption, in a study by Khorasanizadeh et al. (2016). Thus, it is worth to include intentions in our meta-analysis as a factor to be estimated as a potentially relevant predictor of energy-related choices.

Values

The role of human values in pro-environmental behaviors has been often deemed as fundamental. Some values can hinder pro-environmental actions, other values can encourage the adoption of more sustainable ones (Steg and De Groot, 2012). A widely cited model in the literature, such as the value-belief-norm theory (see Stern et al., 1999) emphasizes the indirect association between values and decisions about the environment. Many studies showed associations between biospheric value orientations and specific energy related behaviors such as, for example, residential energy usage (Schultz, 2000; Abrahamse and Steg, 2009, 2011). Thus, in our meta-analysis, it is worth considering the link between biospheric values and energy-saving behavior.

Other studies also showed that altruistic or self-transcendent values (as opposed to self-enhancement ones) are linked to pro-environmental attitudes and behaviors (Nordlund and Garvill, 2002; Schultz et al., 2005; Collins et al., 2007). In particular, the study by Schultz et al. (2005) was conducted across six different countries, involving around 720 participants, and showed that self-transcendent values are positively related to environmental concern, while self-enhancement values are negatively related to general concern, consistently across different cultures.

In sum, values have been commonly related to human behavior in the energy domain. However, as in the case of attitudes and knowledge, a “value-action gap” should also be taken into account (e.g., Huddart-Kennedy et al., 2009). Daily life presents many situations where people endorsing values promoting the mitigation of negative consequences of environmental problems (e.g., global warming, climate change) and the adoption of energy-saving solutions or “low carbon” technologies (such as renewable energy sources) fail to translate these values, beliefs and attitudes into practical actions in their daily life choices. It is therefore important to systematically assess the strength of the relation between value endorsements and energy-related behavior.

Awareness

For the purposes of this paper, under the label “awareness” we group together aspects that have been linked to individuals’ energy choices, such as knowledge of environmental facts, awareness of the consequences of one’s own behavior, or beliefs about climate change or global warming. Although people’s direct knowledge about environmental issues is usually limited, it has been argued that “high level of awareness enables individuals to make conscious choices for acting in an environmentally friendly way” (e.g., Partanen-Hertell et al., 1999, p. 9). Environmental awareness has also been defined in terms of environmental knowledge and/or recognition of environmental problems (Grob, 1995). In our meta-analysis, we refer to those environmental problems that derive from the effects of global climate change and to public’s awareness of adverse consequences of environmental problems. The awareness of consequences (or increasing knowledge) is also an important factor identified in widely-studied models of pro-environmental action, such as the Value–Belief–Norm theory (Stern et al., 1999) or Norm Activation Model (Schwartz, 1977). Indeed, previous

studies documented an increase in the public awareness of adverse consequences of climate change (e.g., Ockwell et al., 2009; Steg, 2008). Although it has been suggested that “while awareness about the issue is now very high, climate change continues to be a low priority issue for most people” (Whitmarsh, 2011, p. 691), it is arguable that being aware of climate change facts or global warming trends can impact individual energy-related decisions. A 2009 survey of the UK Department for Environment, Food and Rural Affairs found for example that the majority of respondents claimed that they were trying to cut down on the use of gas and electricity at home in response to the threats of climate change (see Thornton, 2009). Indeed, awareness of consequences has been shown to increase the intention to adopt an electric vehicle (Bockarjova and Steg, 2014), or to curtail energy consumption (van der Werff and Steg, 2015). Likewise, people with higher awareness of consequences have been identified as more likely to adopt an electric car (Nayum et al., 2016). In their meta-analysis, Bamberg and Möser (2007) suggest, however, that awareness is an important but indirect determinant of pro-environmental behavioral intentions: this seems to be somehow corroborated by recent contradictory and partly surprising findings (e.g., Whitmarsh et al., 2020).

Emotions

Emotions have a crucial role in motivating human behavior (Damasio, 1994; LeDoux, 2012; Levine and Leven, 2014), including pro-environmental and energy-related behaviors (Hine et al., 2007; Carrus et al., 2008; Ferguson and Branscombe, 2010; Onwezen et al., 2013; Rees et al., 2015).

For example, anticipated emotions can be a direct cause of human behavior: an individual’s ability to appraise a future emotional state enables to elaborate and to assess the value of the potential outcomes of one’s own behavior (e.g., Panno et al., 2015). In fact, it has been shown that people’s negative emotions (e.g., anger, frustration, sadness) about engaging in pro-environmental behavior (for example in the area of transport modes choice or waste recycling) reduced their desire to engage in these pro environmental behaviors (Carrus et al., 2008), while positive emotions regarding cycling (e.g., feeling happy and satisfied) increases the desire to choose cycling as transportation mode (Passafaro et al., 2014).

An association between emotions and behavior in the environmental domain was also highlighted for two specific types of discrete emotions: feelings of guilt and pride (e.g., Kaiser, 2006; Elgaaied, 2012). A positive effect of a guilt induction (compared with no emotional induction) emerged in a study on support for climate change policy (Lu and Schuldt, 2015). In an experimental study, Schneider et al. (2017) examined the causal effects of pride vs. guilt on pro-environmental decision making and behavioral intentions, inducing these anticipated emotions just prior to asking participants to make a series of environmental decisions. Results showed that stimulating people to anticipate feelings of pride for positive future pro-environmental actions seems to have a more significant effect compared to prompting feelings of guilt for inactions. Understanding the role of

emotions in everyday life energy choices has therefore the potential to help in defining strategies and designing behavioral interventions to promote the sustainable energy transition. However, the study of emotions as antecedents of energy-related behavior received so far a relatively limited attention in the environmental psychological literature. Thus, in this paper, we considered emotions (either anticipated emotions or other types of emotional states) as a relevant predictor of energy-saving.

METHOD

Eligibility Criteria

For the research methodology in this study, we used the Preferred Reporting Items for Systematic Reviews and Meta-Analyses (PRISMA) provided by Moher et al. (2009).

The goal of our literature search was to identify published empirical studies that examined the links between attitudes, intentions, values, awareness and emotions (X) and people's observed and actual behaviors in the energy domain (Y). Thus, in the meta-analysis we included papers that reported firsthand data about the relationship between X and Y. Technically speaking, we conducted five separate meta-analyses between variable pairs. We completed the literature search on June 20th, 2017. Various criteria were applied to select eligible data for inclusion in the analysis. Specifically, studies were included in the meta-analysis if: (1) they were published in a peer-reviewed journal in the last 10 years; (2) they were published in English; (3) the dependent variable was an energy-saving behavior (actual or self-reported) or an energy-saving behavioral intention; (4) among the independent variables there was at least one of the following measures: attitudes, pro-environmental values, awareness, emotions, intentions (intentions were considered as predictors only for studies where the criterion variable was behavior); (5) in case of studies using an experimental design, the studies were included only if the experimental design had a control group; (6) in the case of papers where bivariate correlations between the respective dependent and independent variables and the sample size were not reported, we contacted authors to obtain the data via email; in case of no response after two email reminders, the correlations were estimated starting from other data available in the paper, whenever possible (e.g., regression coefficients). When a direct coefficient-based estimation was not possible, the paper was not included in the analysis.

In addition to excluding studies that did not meet the inclusion criteria cited above, we also excluded those studies that, rather than on energy use and consumption, were focused more on ideological, political or social stances that individuals, groups and communities might have in regard to energy-related issues; in this category, there are for example many studies that investigate people's reactions to nuclear energy policies, or people's aesthetic judgements or attitudes toward wind turbines, power lines, and so forth: these kind of studies were not included in our meta-analysis. Finally, qualitative studies that did not

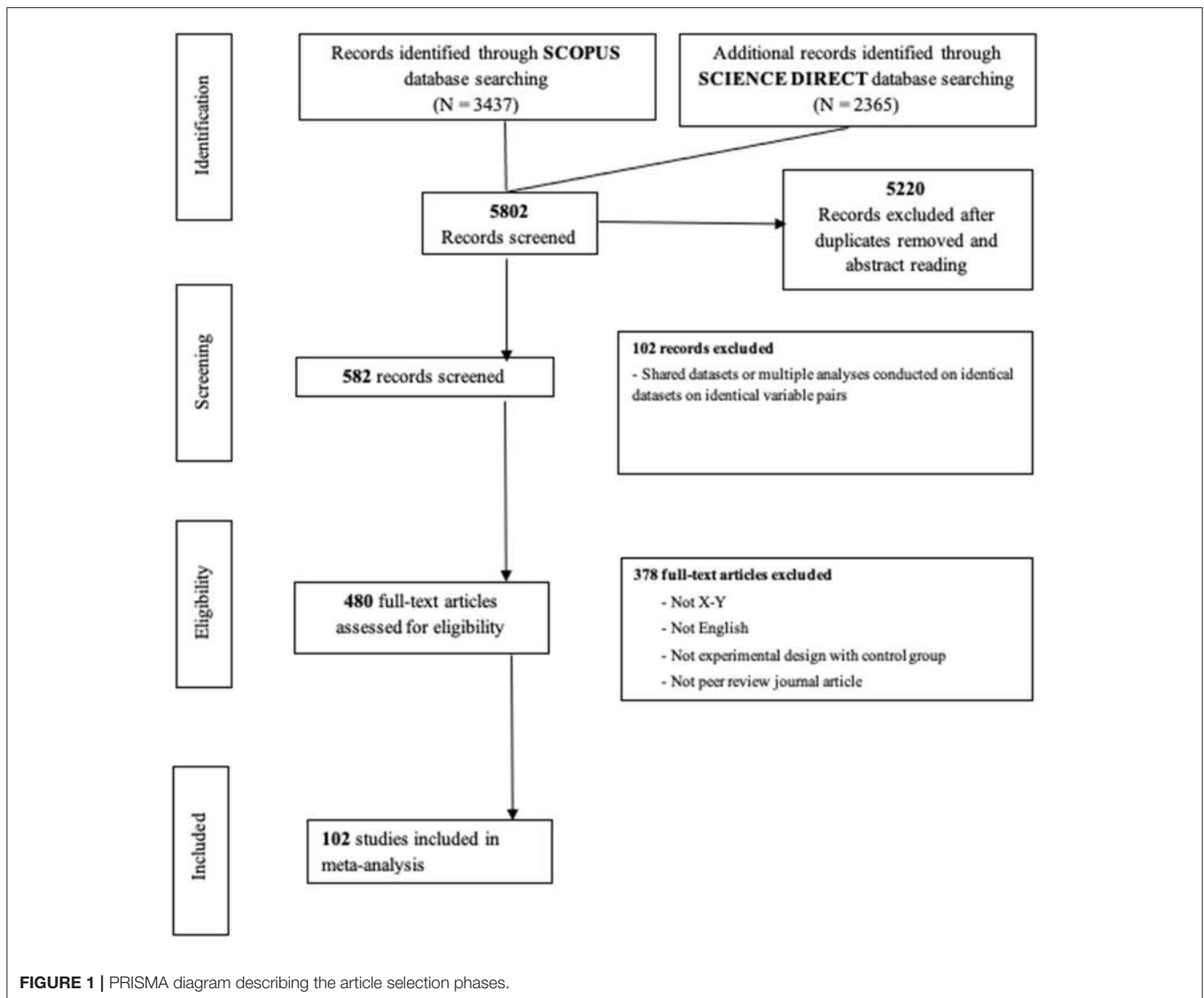
provide sufficient statistical data to allow the calculation of an effect size were not included.

Search Strategies and Study Selection

We conducted the literature search considering a time frame of 10 years (2007–2017). The main strategy consisted of searching two major electronic databases of scientific literature (ScienceDirect and Scopus) using the following search terms:

“(attitude and energ*) or (attitude and electric*) or (emotion* and energ*) or (emotion* and electric*) or (guilt and energ*) or (guilt and electric*) or (pride and energ*) or (pride and electric*) or (anger and energ*) or (anger and electric*) or (“belief* in climate change” and energ*) or (“belief* in climate change” and electric*) or (“belief* in global climate change” and energ*) or (“belief* in global climate change” and electric*) or (“belief* in global warming” and energ*) or (“belief* in global warming” and electric*) or (“belief* of climate change” and energ*) or (“belief* of climate change” and electric*) or (“belief* of global climate change” and energ*) or (“belief* of global climate change” and electric*) or (“belief* of global warming” and energ*) or (“belief* of global warming” and electric*) or (“belief* about climate change” and energ*) or (“belief* about climate change” and electric*) or (“belief* about global climate change” and energ*) or (“belief* about global climate change” and electric*) or (“belief* about global warming” and energ*) or (“belief* about global warming” and electric*) or (“climate change risk perception*” and energ*) or (“climate change risk perception*” and electric*) or (“perception* of climate change ” and energ*) or (“perception* of climate change ” and electric*) or (“climate change perception*” and energ*) or (“climate change perception*” and electric*) or (“knowledge in climate change” and energ*) or (“knowledge in climate change” and electric*) or (“knowledge in global climate change” and energ*) or (“knowledge in global climate change” and electric*) or (“knowledge in global warming” and energ*) or (“knowledge in global warming” and electric*) or (“knowledge about climate change” and energ*) or (“knowledge about climate change” and electric*) or (“knowledge about global climate change” and energ*) or (“knowledge about global climate change” and electric*) or (“knowledge about global warming” and energ*) or (“knowledge about global warming” and electric*) or (awareness and energ*) or (awareness and electric*) or (intention* and energ*) or (intention* and electric*) or (“environment* value*” and energ*) or (“environment* value*” and electric*) or (“value system*” and energ*) or (“value system*” and electric*).”

Furthermore, we hand-searched in the references of the selected journal articles further relevant studies that were not initially found through the database search and that were conducted on this topic. As a consequence of these bibliographic searches, we initially found 5,802 articles. This number includes duplicate hits (e.g., when the same paper was located in both databases). After removing the duplicates, we examined the abstracts of potentially relevant papers to determine whether they met our inclusion criteria. A total of 582 papers remained to be inspected. Based on this set, we eliminated entries that were inconsistent with our eligibility criteria and papers that shared the same dataset of a study already selected for the meta-analysis, such as multiple analyses conducted with an identical dataset on an



identical variable pair ($K = 480$). Finally, we contacted authors for additional data in the case of papers that did not include the necessary information to compute the effect sizes. A final set of 102 research articles was included in the current meta-analysis after the application of all the exclusion decisions. The PRISMA diagram in **Figure 1** describes how articles were selected and filtered through different phases of the search process, including reasons for excluding articles during the in-depth review stage.

Coding

From each study, we extracted data regarding: (a) sample size; (b) mean age in the sample; (c) gender (coded as the percentage of women in the sample); (d) type of sample: 1 = student sample, 2 = non-student sample, 3 = representative sample. In addition to this, other more specific coding procedures were applied. With regard to the dependent variable (i.e., intentions, self-reported or actual behavior) we often found articles reporting two or more of these measures. Our strategy was to choose

as dependent variable the more “objective” measure included in a given study. For example, if a study included measures of all these three different outcomes (intentions, self-reported behavior, actual behavior), to calculate the effect size we used the actual behavior measure. If we found two of these three outcomes (e.g., intentions and self-reported behavior), we used the self-reported behavior outcome. If the primary study reported both self-reported and actual behavior, we used the actual behavior. In other words, the more “objective” outcome available in each study was been selected for the meta-analysis. Such a strategy allowed us to reduce the number of studies reporting multiple non-independent effect sizes that could affect the final estimates in the current meta-analysis.

Sensitivity Analysis

Because in some cases the data for the calculation of effect sizes were derived from multivariate analyses (multiple regressions, path models, SEM, etc.), the effect sizes based on r values may

TABLE 1 | Summary of ES of the association between attitudes and energy saving behaviors (or intentions).

References	Statistics for each study			
	Sample size	Correlation	95% LLCI	95% ULCI
Afroz et al. (2015a) (ESPR Journal)	350	0.20	0.10	0.30
Aini et al. (2013)	201	0.14	0.00	0.27
Al-Amin et al. (2016)	300	0.30	0.19	0.40
Barbarossa et al. (2015)	611	0.67	0.62	0.71
Barbarossa et al. (2015)	600	0.77	0.74	0.80
Barbarossa et al. (2015)	794	0.73	0.70	0.76
Carmi et al. (2015)	1,160	0.26	0.21	0.31
Claudy et al. (2013)	254	0.34	0.23	0.44
Craig and Allen (2014)	2,058	0.78	0.77	0.80
Degirmenci and Breitner (2017)	167	0.33	0.19	0.46
Dixon et al. (2015)	2,919	0.14	0.10	0.17
Engelken et al. (2016)	109	0.74	0.64	0.81
Fornara et al. (2016)	432	0.31	0.22	0.39
Gaspar and Antunes (2011)	1,303	0.19	0.13	0.24
Halder et al. (2016)	402	0.64	0.58	0.70
Halder et al. (2016)	130	0.55	0.42	0.66
Han et al. (2017)	607	0.77	0.74	0.80
Hansla et al. (2008)	855	0.42	0.36	0.47
Hatzel et al. (2014)	58	0.21	-0.05	0.44
Hertel and Menrad (2016)	104	0.51	0.35	0.64
Kim et al. (2014)	1,647	0.61	0.58	0.64
Klößner et al. (2013)	1,787	0.22	0.17	0.26
Korcaj et al. (2015)	200	0.40	0.28	0.51
Lin and Syrgabayeva (2016)	305	0.32	0.22	0.42
Litvine and Wüstenhagen (2011)	170	0.26	0.11	0.40
Mohamed et al. (2016)	3,505	0.72	0.71	0.74
Moons and De Pelsmacker (2012)	1,199	0.56	0.52	0.60
Murtagh et al. (2013)	83	0.46	0.27	0.61
Nayum and Klößner (2014)	1,517	0.18	0.13	0.23
Nguyen et al. (2016)	682	0.29	0.22	0.36
Park and Ohm (2014)	1,429	0.50	0.46	0.54
Pettifor et al. (2015)	295	0.11	0.00	0.23
Prete et al. (2017)	128	0.58	0.45	0.68
Rai and Beck (2017)	522	0.38	0.30	0.45
Scott et al. (2014)	279	0.87	0.84	0.90
Shi et al. (2017)	580	0.70	0.66	0.74
Wittenberg and Matthies (2016)	213	0.48	0.37	0.58
Wolske et al. (2017)	904	0.44	0.39	0.49
Yang et al. (2016)	526	0.30	0.22	0.37
Yun and Lee (2015)	753	0.77	0.73	0.79
Zierler et al. (2017)	628	0.15	0.07	0.22

A 95% CI that does not include zero provides evidence of a significant effect.

be –over- or underestimated. Therefore, we explored, through a sensitivity analysis, if the effect size estimates vary as a function of effect sizes that are zero-order (i.e., derived from univariate analyses) or derived from partial coefficients (see the Statistical tests section for more details). A sensitivity analysis has also

been carried out to highlight any eventual difference between studies reporting and not-reporting multiple non-independent effect sizes (see the Results section for more details). Finally, a sensitivity analysis has been carried out to investigate potential differences between studies that use a general measure of awareness of consequences and studies that focus on more specific awareness measures, such as beliefs in climate change (see the Results section for more details).

Statistical Tests

We used the r correlation coefficient as the effect size metric for the current meta-analysis. For studies that only reported β coefficients we had applied Peterson and Brown (2005) formula: $r = \beta + 0.05 \lambda$ (where $\lambda = 1$ for non-negative β s, and $\lambda = 0$ for negative β s) in imputing the corresponding r coefficients. We also computed r values for studies that did not conduct correlational analyses via sample sizes along with t -values, χ^2 values, p -values, and standardized mean differences (i.e., Cohen's d). In addition, we reverse-scored several measurements to assure that each positive effect size computed would represent a direct positive association between the various predictors (attitude, intentions, values, awareness, and emotions) and energy-saving behavior (ESB). We adopted a random-effects model to calculate the aggregated effect size of each predictor on ESB. Because our sample contained studies conducted with noticeably different features, we did not use a fixed-effect model. In fact, the latter model assumes that all the studies included are functionally identical and share a single canonical effect size (Hedges and Vevea, 1998; Borenstein et al., 2010). In addition to relaxing this assumption, the random-effects model allows for more unconditional inferences (i.e., a generalizable conclusion to situations beyond the sampled studies) of the results (Field, 2001). Even though it was not very frequent, sometimes we found studies reporting non-independent effect sizes (e.g., multiple measures of the same variable). In these cases, we computed effect sizes using Cooper's (1998) Shifting-Unit-of-Analysis method for studies that report multiple, non-independent effect sizes. As such, we referred to the study as the unit of analysis meaning that each study included would contribute only to one summary effect size to the main analysis (see Cooper, 1998; see also the sensitivity analysis paragraph for more details about this point). We display the 95% confidence intervals alongside indices of heterogeneity assessment like I^2 , i.e., the cross-studies "inconsistency index" (Higgins and Thompson, 2002; Higgins et al., 2003), Cochran Q , and tau-squared (the "study-to-study variances"; Borenstein et al., 2009). We also addressed publication bias by examining the funnel plots, where all effect sizes are plotted against the standard error. To check for a potential publication bias, we visually inspected the symmetry of the funnel plots. We also examined the classical Rosenthal's (1979) fail-safe N . We applied the mixed-effects model in the categorical univariate moderator analyses and the meta-regression analyses for the continuous moderators. All analyses in the current meta-analysis were conducted using the Comprehensive Meta-Analysis (CMA) software, Version 3.0 (Borenstein et al., 2009, 2014).

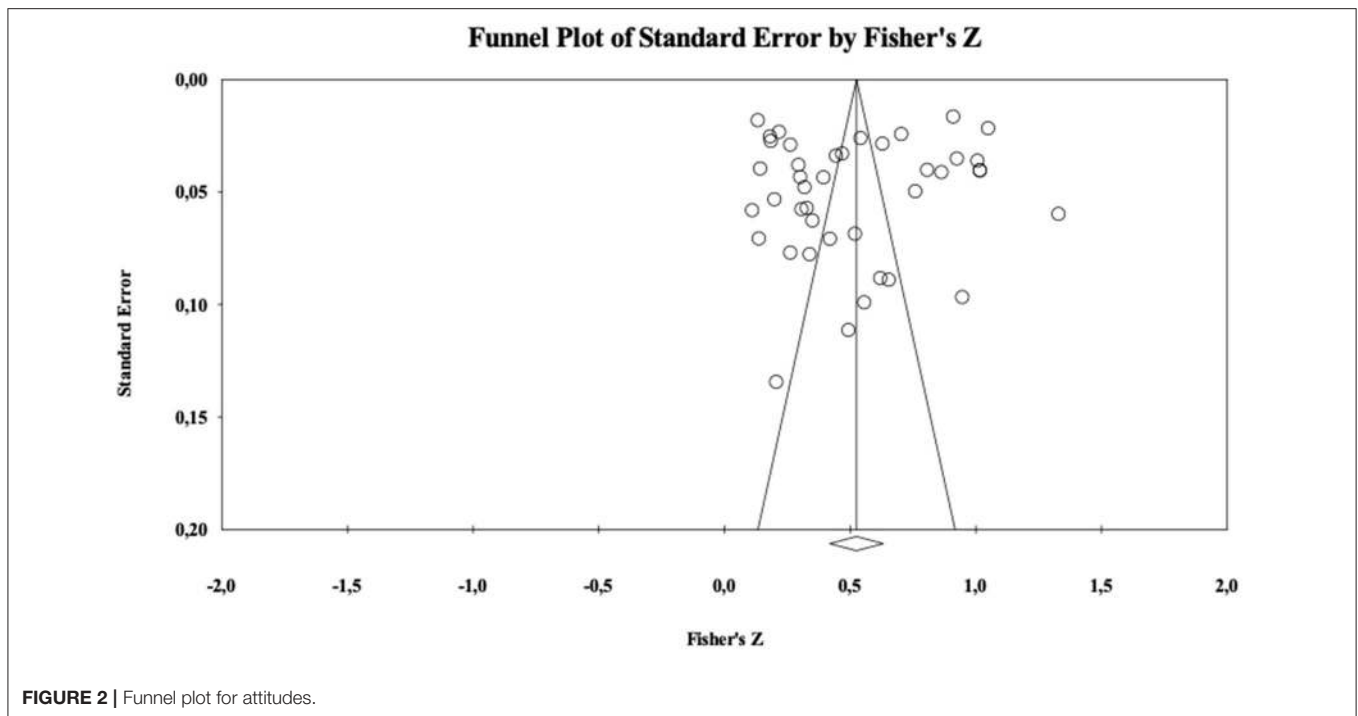


FIGURE 2 | Funnel plot for attitudes.

TABLE 2 | Summary of ES of the association between intentions to adopt energy saving solutions and energy saving behavior.

References	Statistics for each study			
	Sample size	Correlation	95% LLCI	95% ULCI
Afroz et al. (2015a) (ESPR Journal)	350	0.32	0.22	0.41
Ajzen et al. (2011)	79	0.62	0.46	0.74
Akman and Mishra (2015)	157	0.25	0.10	0.39
Al-Amin et al. (2016)	300	0.28	0.17	0.38
Azar and Al Ansari (2017)	227	0.56	0.46	0.64
Carmi et al. (2015)	1,160	0.18	0.12	0.24
Dixon et al. (2015)	2,919	0.24	0.21	0.27
Gerpott and Paukert (2013)	453	0.23	0.14	0.32
Hatzl et al. (2014)	58	0.31	0.05	0.52
Khorasanizadeh et al. (2016)	221	0.44	0.33	0.54
Klößner et al. (2013)	1,787	0.33	0.28	0.37
Murtagh et al. (2013)	83	0.15	-0.07	0.35
Nayum and Klößner (2014)	1,517	0.34	0.30	0.39
Rai and Beck (2017)	522	0.11	0.02	0.19
Webb et al. (2013)	200	0.25	0.12	0.38
Zierler et al. (2017)	628	0.27	0.19	0.34

A 95% CI that does not include zero provides evidence of a significant effect.

RESULTS

Sensitivity Analysis

Results of the sensitivity analysis did not show differences among the sub-groups of effect size estimates derived from univariate

analyses (i.e., zero-order) vs. from multivariate analyses (i.e., partial coefficients), across each predictor (all $ps = ns$). Likewise, the sensitivity analysis did not show differences among the sub-groups of studies reporting vs. not-reporting multiple non-independent effect sizes, across each predictor (all $ps = ns$). Finally, results of the sensitivity analysis concerning differences between studies employing measures of general or specific measures of awareness are reported in the next sections (i.e., *Awareness* section). In the following sections, we describe the results on the estimation of average effect size of predictor-criterion relations, publication bias, and relevant moderators.

Attitudes: Overall and Publication Bias Results

The estimated effect sizes of the association between attitudes and energy-saving behaviors (or intentions) are displayed in **Table 1**.

The analysis revealed a moderate/large positive association between attitude and ESB: $r = 0.482$; 95% CI (confidence interval) lower limit (LLCI)/upper limit (ULCI) = 0.396/0.559; $p < 0.001$. We observed a non-negligible level of variation in the distribution of effect sizes (Tau = 0.343, Tau-squared = 0.117). This might be explained by the considerable extent of heterogeneity [i.e., $I^2 = 98.84$; $Q(40) = 3458.58$, $p = 0.0001$] inherent among the sampled studies.

To address the extent of publication bias we first examined the classical Rosenthal's (1979) fail-safe N. This index estimates how many unpublished studies with a null effect size would be necessary to turn a significant population effect size estimate into a non-significant one based on the Stouffer Z-test. Rosenthal (1979) recommended the fail-safe N to be smaller than a 5K+10 benchmark. In our meta-analysis, for the relationship

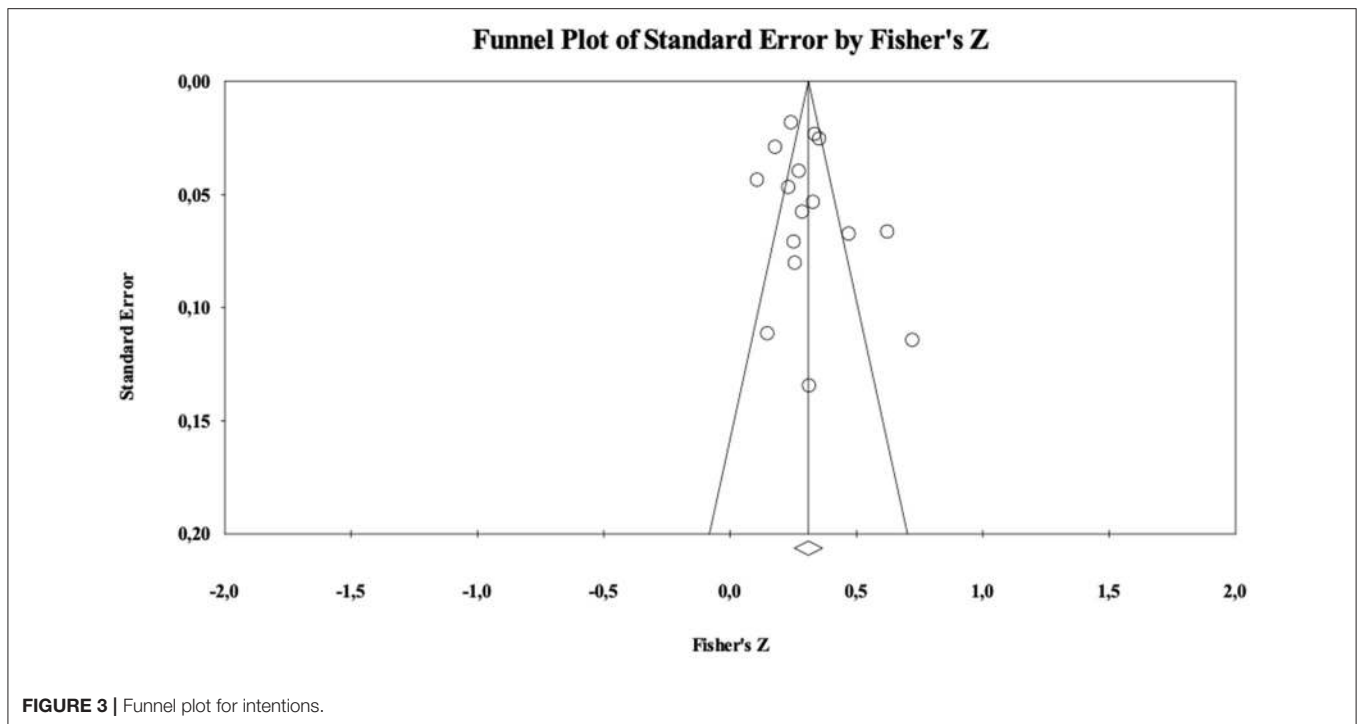


TABLE 3 | Summary of ES of the association between values and energy saving behaviors (or intentions).

References	Statistics for each study			
	Sample size	Correlation	95% LLCI	95% LCI
Barbarossa et al. (2017)	2,005	0.36	0.32	0.40
Fornara et al. (2016)	432	0.06	-0.03	0.15
Girod et al. (2017)	1,101	0.37	0.32	0.42
Hatzl et al. (2014)	56	0.22	-0.04	0.46
Murtagh et al. (2013)	83	0.14	-0.08	0.35
Nayum et al. (2016)	1,508	0.27	0.23	0.32
Yang et al. (2016)	526	0.33	0.25	0.40

A 95% CI that does not include zero provides evidence of a significant effect.

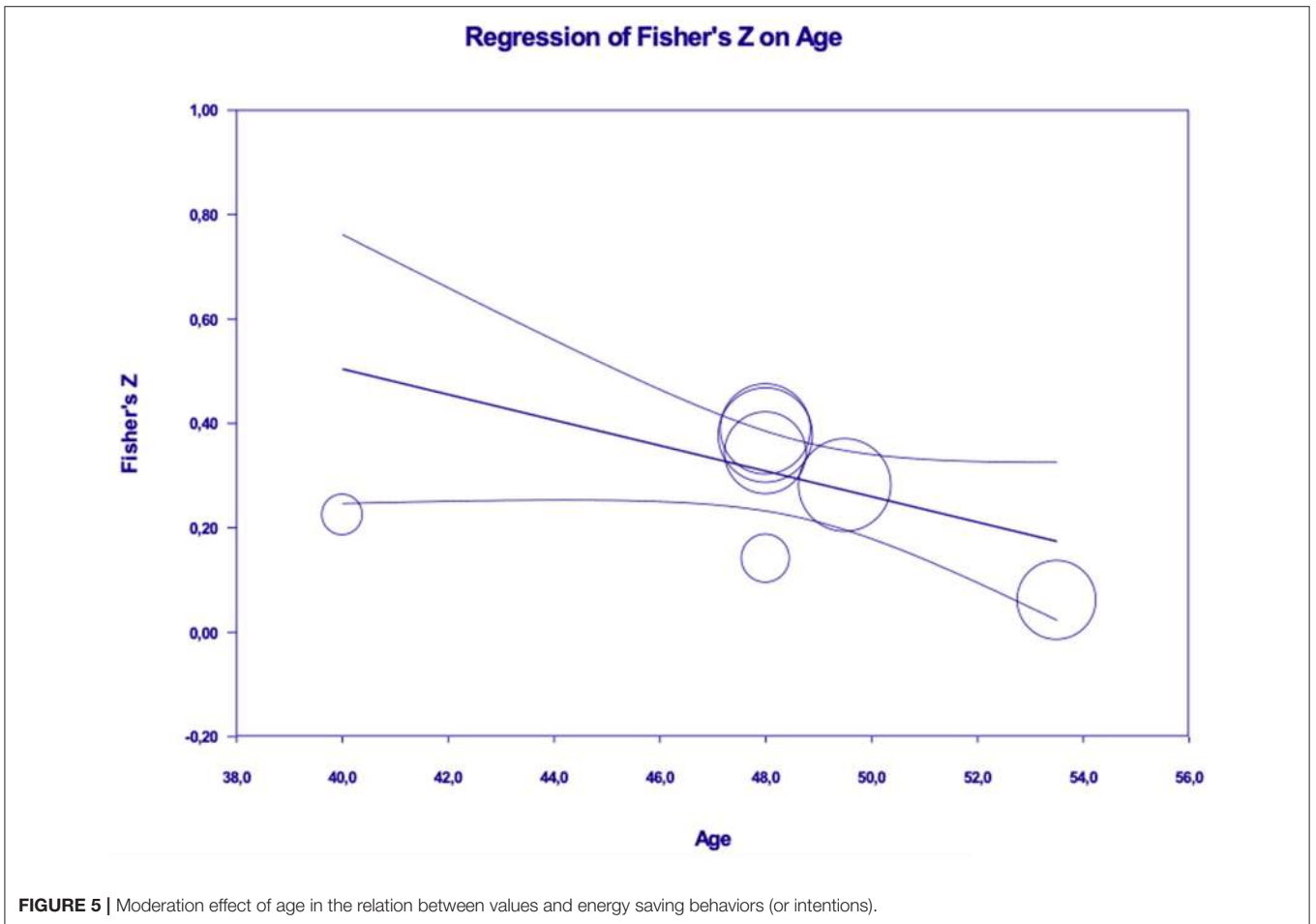
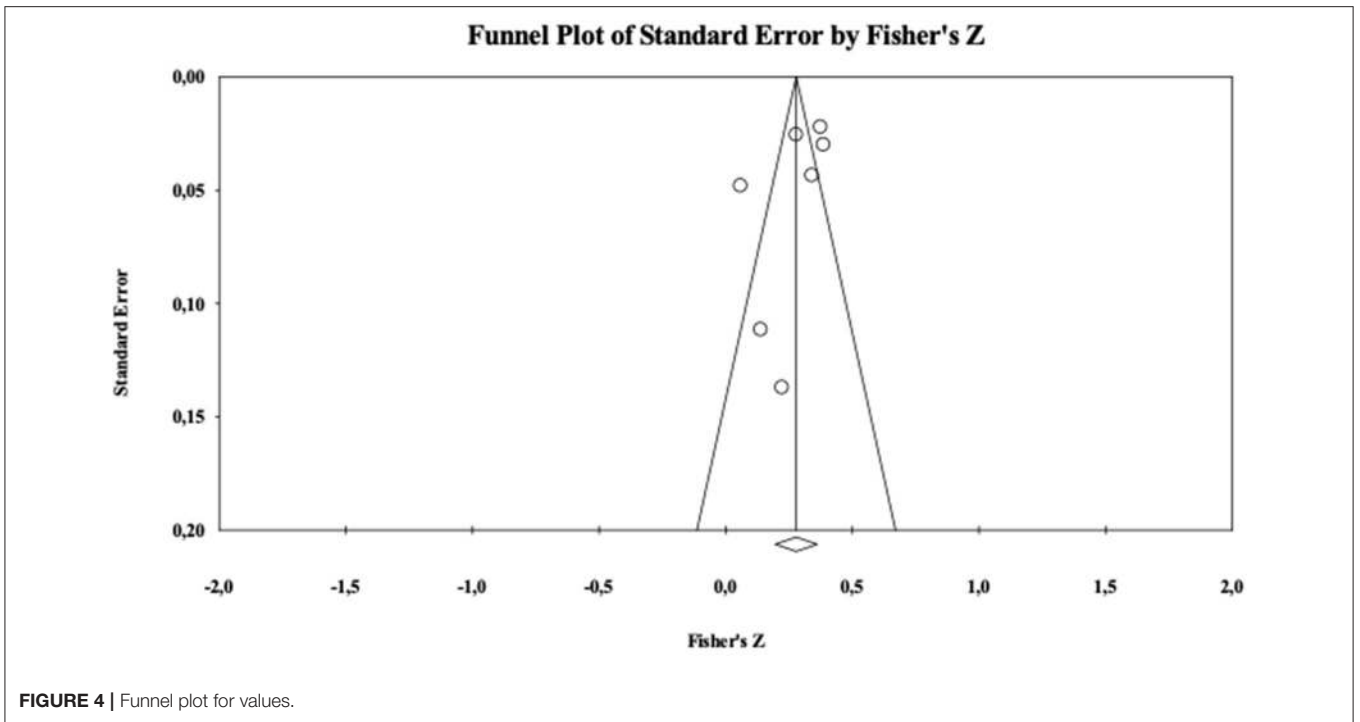
between attitudes and ESB, the critical value $5K+10$ was 215. The analyses showed a $Nfs = 75,246$. Moreover, we inspected the so-called “funnel plot,” that is a graphical technique in which the standard error of each study’s effect size is plotted against the standardized effect size itself. Lack of publication bias is suggested by a symmetrical cloud of studies centered around the population effect size, with increasing variability at increasing levels of standard error. This is because there should be about as many studies providing non-significant results as those providing significant ones at each specific level of standard error, whereas studies with smaller standard errors should also be closer to the population effect size. As shown in the **Figure 2**, the funnel plot has a rather symmetrical shape. In sum, both these

indicators suggest that the present analysis is not contaminated by publication bias.

Attitudes: Moderation Effects

For all the predictors, we used the percentage of women in the sample as a continuous variable to be included in a meta-regression model that aims to estimate the potential moderating effect of gender on the relationship between the independent variable and ESB. In the case of attitudes, results show no significant moderating effect of gender ($\beta = 0.001$, $p = ns$). A similar meta-regression model was conducted considering participants’ age as moderator in the relationship between ecological attitude and ESB. Results show no significant moderating effect of age on the relationship between ecological attitude and ESB ($\beta = 0.001$, $p = ns$). Concerning the different types of sample (i.e., students vs. non-students vs. representative sample; see the previous section), results did not show a significant moderating role of this factor, $Q(1) = 0.014$, $p = ns$.

Interestingly, results showed a significant moderating role of the type of dependent variable considered in the study. Associations with attitudes were significant for studies that considered intentions ($r = 0.565$, LLCI/ULCI = 0.475/0.643) and self-reported behavior as outcomes ($r = 0.312$, LLCI/ULCI = 0.147/0.460). On the contrary, the association with attitudes was not significant in the case of studies that considered actual behavior as outcome ($r = 0.338$, LLCI/ULCI = -0.099/0.666), $Q(2) = 9.03$, $p < 0.01$. Moreover, results showed that the effect size of the association between attitudes and intention ($r = 0.565$, LLCI/ULCI = 0.475/0.643) is significantly larger than the effect size of the association between attitudes and self-reported



behavior ($r = 0.312$, LLCI/ULCI = 0.147/0.460), $Q(1) = 8.40$, $p < 0.01$.

Intentions: Overall and Publication Bias Results

To assess the strength of the association between intentions to adopt energy-saving solutions and energy-saving behaviors, we considered in the current meta-analysis only those studies that measured actual or self-reported ESBs as outcomes. The estimated effect sizes are displayed in **Table 2**.

The analysis revealed a moderate positive association between intention and ESB: $r = 0.300$; 95% CI LLCI/ULCI = 0.249/0.350; $p < 0.0001$. We observed a non-negligible level of variation in the distribution of effect sizes (Tau = 0.096, Tau-squared = 0.009). This might be explained by the moderate/large extent of heterogeneity [i.e., $I^2 = 84.65$; $Q(15) = 97.76$, $p = 0.0001$] among the sampled studies.

The critical value $5K+10$ of Nfs was 90. The analyses showed a Nfs = 2,925. As showed in **Figure 3**, the funnel plot is rather symmetrical. In sum, both these indicators suggest that the present analysis is not contaminated by publication bias.

Intentions: Moderation Effects

Results showed no significant moderating effects of gender ($\beta = 0.001$, $p = ns$) and age ($\beta = -0.003$, $p = ns$) on the relationship between intentions and ESB. A significant moderating effect of sample type emerged (students vs. non-students): $Q(1) = 4.55$, $p < 0.01$. Although associations were significant for both student ($r = 0.421$, LLCI/ULCI = 0.300/0.529) and non-student samples ($r = 0.274$, LLCI/ULCI = 0.214/0.333), the effect size was significantly larger in the former case. Regarding the type of dependent variable (actual vs. self-reported behavior), no significant moderation effects were shown [$Q(1) = 0.61$, $p = ns$].

Values: Overall and Publication Bias Results

The estimated effect sizes of the association between values and energy saving behaviors (or intentions) are displayed in **Table 3**.

The analysis revealed a small/moderate positive association between pro-environmental values and ESB: $r = 0.271$; 95% CI LLCI/ULCI = 0.193/0.346; $p < 0.0001$. We observed a non-negligible level of variation in the distribution of effect sizes (Tau = 0.097, Tau-squared = 0.009). This might be explained by the moderate/large extent of heterogeneity [i.e., $I^2 = 86.93$; $Q(6) = 45.93$, $p = 0.0001$] emerging among the sampled studies.

The critical value $5K+10$ of Nfs was 45. Analyses showed a Nfs = 715. As showed in **Figure 4** the funnel plot was rather symmetrical. In sum, both these indicators suggest that the present analysis is not contaminated by publication bias.

Values: Moderation Effects

Results revealed a significant moderation effect of age ($\beta = -0.02$, $p < 0.05$; R^2 analog = 0.59), with the effect approaching to zero as participants' age increases (See **Figure 5**). No significant moderation effects emerged for gender ($\beta = -0.002$, $p = ns$), type of the sample [$Q(1) = 1.25$, $p = ns$] and type of dependent variable [$Q(2) = 0.79$, $p = ns$].

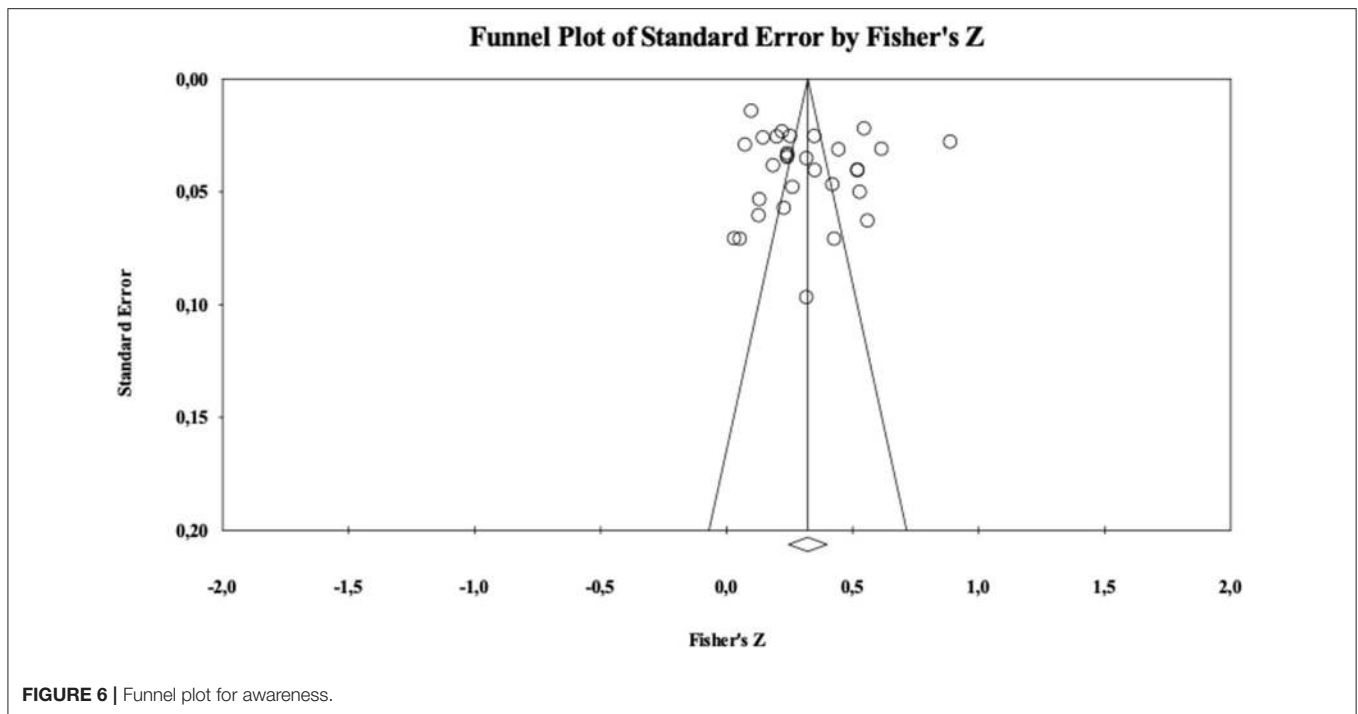
TABLE 4 | Summary of ES of the association between awareness of consequences/beliefs in climate change and energy saving behaviors (or intentions).

References	Statistics for each study			
	Sample size	Correlation	95% LLCI	95% ULCI
Afroz et al. (2015b) (Euasia Journal)	200	0.06	-0.08	0.19
Alam et al. (2014)	200	0.41	0.28	0.52
Barbarossa et al. (2015)	611	0.48	0.42	0.54
Barbarossa et al. (2015)	600	0.48	0.42	0.54
Barbarossa et al. (2015)	794	0.31	0.25	0.37
Barbarossa et al. (2017)	2,005	0.50	0.47	0.53
Bichard and Kazmierczak (2012)	671	0.19	0.11	0.26
Engelken et al. (2016)	109	0.31	0.13	0.47
Fornara et al. (2016)	432	0.26	0.17	0.34
Gerpott and Paukert (2013)	453	0.40	0.32	0.47
Hansla et al. (2008)	855	0.24	0.17	0.30
He and Zhan (2017)	396	0.49	0.41	0.56
Hobman and Frederiks (2014)	1,154	0.08	0.02	0.13
Karytsas and Theodoropoulou (2014)	201	0.03	-0.11	0.17
Klößner et al. (2013)	1,787	0.22	0.18	0.26
Lillemo (2014)	1,004	0.42	0.37	0.47
Lin and Syrgabayeva (2016)	305	0.23	0.12	0.33
Menon and Mahanty (2016)	1,017	0.55	0.51	0.59
Nakada et al. (2016)	4,750	0.10	0.07	0.13
Nayum and Klößner (2014)	1,517	0.25	0.20	0.30
Sapci and Considine (2014)	602	0.34	0.27	0.41
Spence et al. (2010)	1,491	0.20	0.15	0.25
Tsagarakis et al. (2011)	1,440	0.15	0.10	0.20
Vaccaro and Echeverri (2010)	1,257	0.71	0.68	0.74
Wang et al. (2011)	816	0.24	0.17	0.30
Wang et al. (2017)	253	0.51	0.41	0.60
Wolske et al. (2017)	904	0.24	0.18	0.30
Li et al. (2013)	1,516	0.34	0.29	0.38
Zhang X. et al. (2013)	349	0.13	0.03	0.23
Zhang Y. et al. (2013)	273	0.13	0.01	0.24

A 95% CI that does not include zero provides evidence of a significant effect.

Awareness: Sensitivity Analysis

As stated before, under the label "Awareness," we included both studies that dealt with the more general concept of "awareness of consequences of one's own behavior" and studies that dealt with the more specific dimension of "beliefs in climate change." Therefore, prior to the main effects and moderation tests, we performed a sensitivity analysis to explore whether the effect size in the index of association that was derived from a measure of awareness of consequences ($r = 0.333$, LLCI/ULCI = 0.255/0.407) is different from the effect size derived from a measure of beliefs in climate change ($r = 0.223$, LLCI/ULCI = 0.057/0.378). While both effects were significant, they were not significantly different from each other, $Q(1) = 1.512$, $p = 0.219$. Thus, we can conclude that the overall effect size of the



relationship between this predictor and ESB is not affected from specific measurement features used to assess either awareness of consequences or beliefs in climate change.

Awareness: Overall and Publication Bias Results

The estimated effect sizes of the association between awareness of consequences/beliefs in climate change and energy saving behaviors (or intentions) are displayed in **Table 4**.

Results revealed a moderate positive association between awareness and ESB: $r = 0.311$; 95% CI LLCI/ULCI = 0.241/0.379; $p < 0.001$. We observed a non-negligible level of variation in the distribution of effect sizes (Tau = 0.209, Tau-squared = 0.044). This might be explained by the considerable extent of heterogeneity [i.e., $I^2 = 97.51$; $Q(29) = 1168.14$, $p = 0.0001$] across the sampled studies.

The critical values $5K+10$ of Nfs was 160. Analyses showed such a Nfs = 8,803. As showed in the **Figure 6**, the funnel plot reveals a rather symmetrical distribution. In sum, both these indicators suggest that the present analysis is not likely to be contaminated by publication bias.

Awareness: Moderation Effects

Results revealed no significant moderating effects in the relation between awareness and ESB for gender ($\beta = -0.001$, $p = ns$), age ($\beta = 0.001$, $p = ns$), sample typology [$Q(1) = 0.70$, $p = ns$] and type of dependent variable [$Q(2) = 0.08$, $p = ns$].

TABLE 5 | Summary of ES of the association between emotions and energy saving behaviors (or intentions).

References	Statistics for each study			
	Sample size	Correlation	95% LLCI	95% ULCI
Fornara et al. (2016)	432	0.32	0.23	0.40
Han et al. (2017)	607	0.66	0.61	0.70
Moons and De Pelsmacker (2012)	1,199	0.60	0.56	0.63
Taufik et al. (2016)	152	0.61	0.50	0.70
Taufik et al. (2016)	132	0.85	0.79	0.89
Wang and Wu (2016)	775	0.27	0.20	0.33
Webb et al. (2013)	200	0.46	0.34	0.56
Wolske et al. (2017)	904	0.25	0.19	0.31

A 95% CI that does not include zero provides evidence of a significant effect.

Emotions: Overall and Publication Bias Results

The estimated effect sizes of the association between emotions and energy saving behaviors (or intentions) are displayed in **Table 5**.

As the number of studies on single discrete emotions (e.g., pride, guilt, or anger) was rather limited, in our meta-analysis we pooled all these emotions together as potential predictors of ESB. This was possible because, independently from the emotional valence, each study included here considered these emotions as drivers of ESB. Results revealed a large positive association between emotions (e.g., guilt, pride, etc.) and ESB, $r = 0.533$, 95% CI LLCI/ULCI = 0.379/0.658, $p = 0.0001$. We observed a

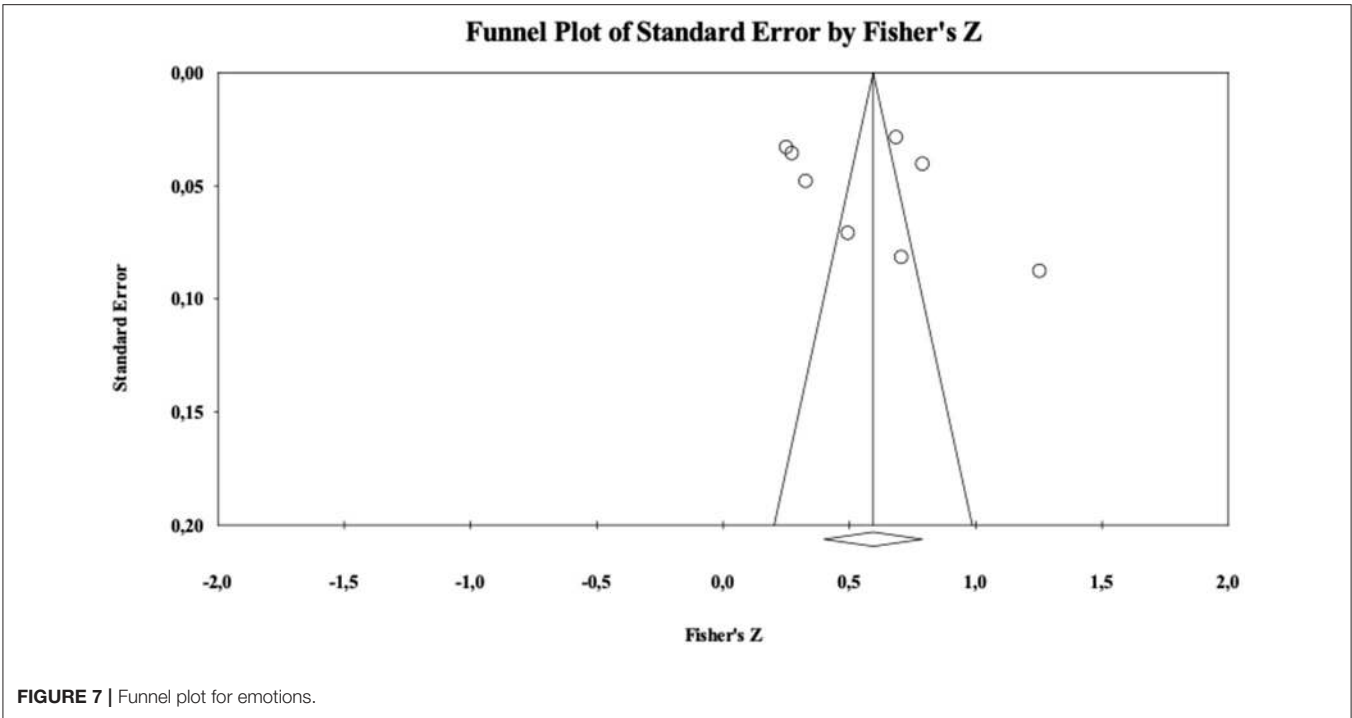


FIGURE 7 | Funnel plot for emotions.

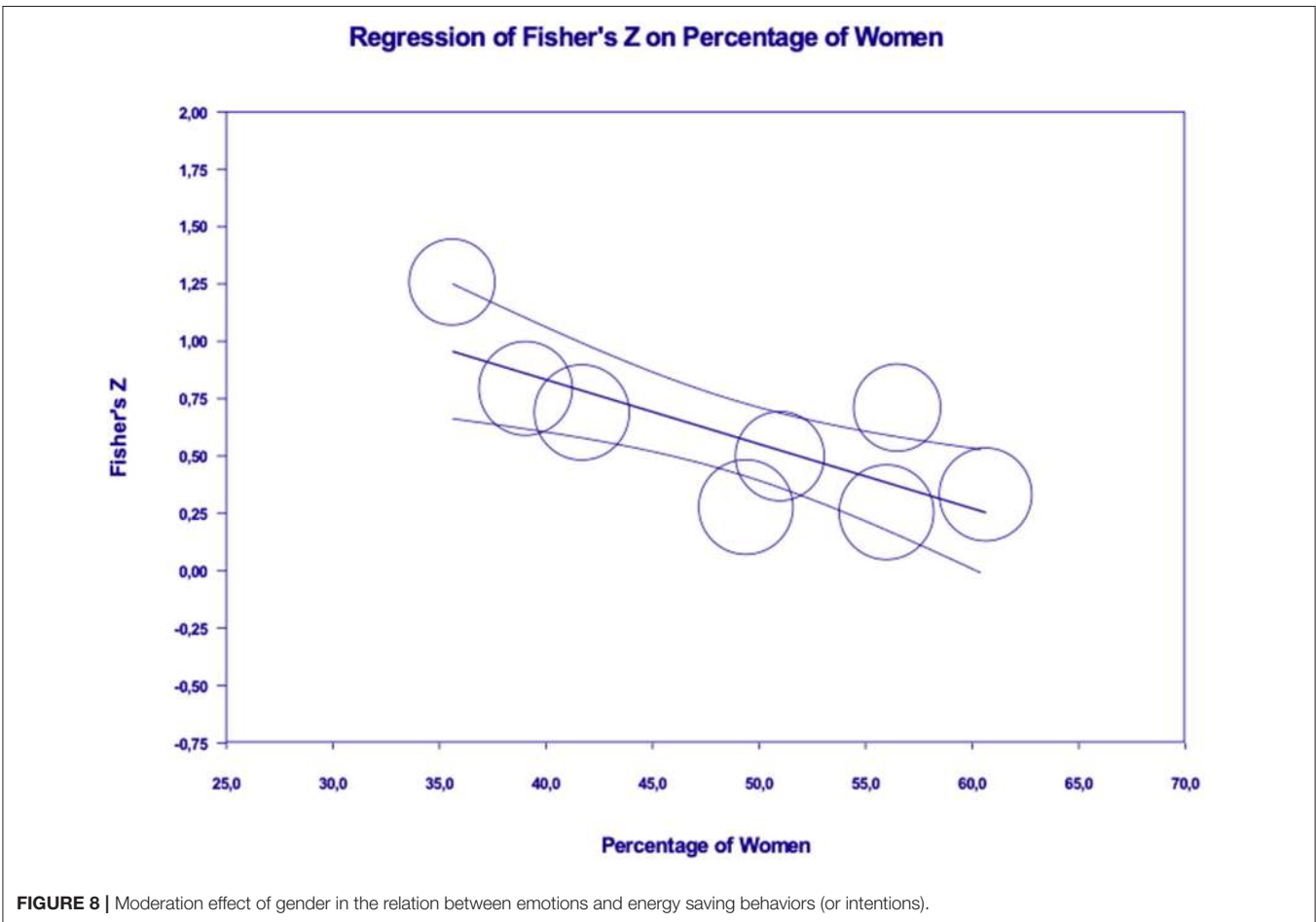
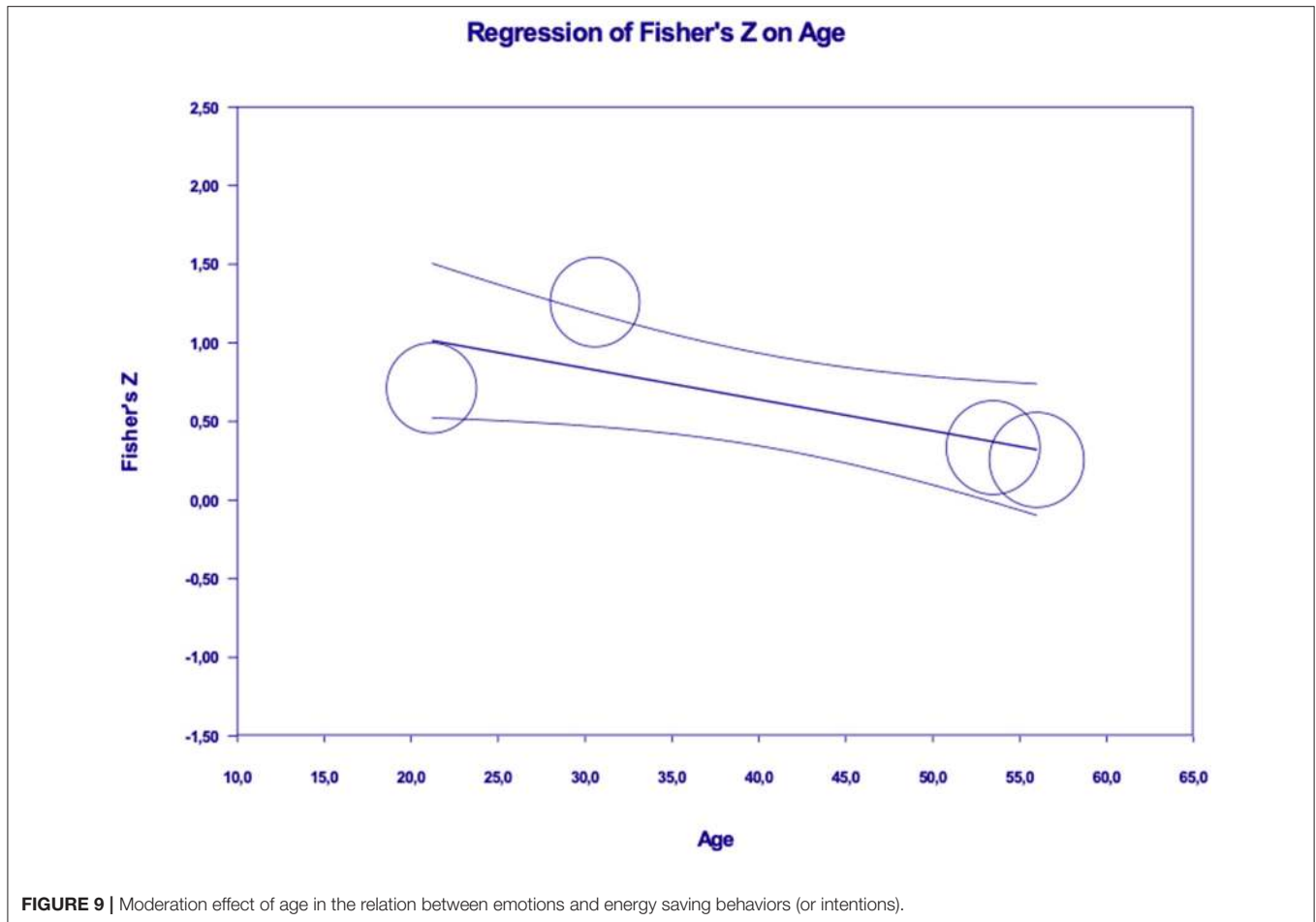


FIGURE 8 | Moderation effect of gender in the relation between emotions and energy saving behaviors (or intentions).



non-negligible level of variation in the distribution of effect sizes ($\text{Tau} = 0.276$, $\text{Tau-squared} = 0.076$). This might be explained by the considerable extent of heterogeneity [i.e., $I^2 = 97.49$; $Q(7) = 279.62$, $p < 0.0001$] inherent among the sampled studies.

The critical values $5K+10$ of Nfs was 50. Analyses showed a Nfs = 2,357. As showed in **Figure 7**, the funnel plot was rather symmetrical. In sum, both these indicators suggest that the present analysis is not contaminated by publication bias.

Emotions: Moderation Effects

Results revealed a significant moderation effect, in the relation between emotions and ESB, for gender ($\beta = -0.03$, $p < 0.001$; R^2 analog = 0.60) and age ($\beta = -0.02$, $p < 0.05$; R^2 analog = 0.59), with the effects approaching to zero as the percentage of women and participants' age increase (see **Figures 8, 9**). Results did not show a significant moderation effect for sample type [$Q(1) = 0.176$, $p = \text{ns}$] and type of dependent variable [$Q(1) = 0.124$, $p = \text{ns}$].

DISCUSSION, CONCLUSIONS, AND PRACTICAL IMPLICATIONS

Taken together, results indicate that the five classes of psychological factors considered in this meta-analysis are

positive and significant predictors of energy saving behaviors (and intentions).

We show a large association of energy saving behaviors with positive and negative emotions (such as guilt, anger or pride); a positive moderate/large association of energy saving behaviors with pro-environmental attitudes; a positive moderate association of energy saving behaviors with awareness of consequences/beliefs in climate change; a positive moderate association of energy saving behaviors with intentions to adopt energy saving solutions; a positive small/moderate association of energy saving behaviors with pro-environmental values. Thus, while all the potential determinants included in our study might be important to explain energy saving behaviors, some predictors, like emotions, show more explanatory power than others, like values or beliefs. It is difficult to explain these differences, without a direct empirical comparison of the mechanisms involved in such relations. On a speculative level, one might argue that pro-environmental beliefs or biospheric values are widely shared in contemporary society, at a global level (particularly among respondents that usually participate in psychological studies); thus, it might be hard to explain differences in human actions on that basis. Also, attitude-behavior or value-behavior gaps are not novel in social psychological or sociological research. Conversely, affective states or emotions associated to a particular

course of action in the energy domain (or in the environmental domain in general), might be more directly associated to real-life choices, especially when individuals are asked to change habitual or routinary patterns of behaviors (see also Carrus et al., 2020).

Our moderation analyses also uncovered some interesting results. Participants' age emerged as a relevant moderator in the associations of pro-environmental values and emotions with energy saving behaviors (or intentions) suggesting that the role of these variables is weaker among older people.

In the case of emotions, gender also emerged as a significant moderator, suggesting that associations between emotions (such as guilt or pride) and energy-related behaviors are weaker among women, compared to men.

Both the tests of the direct effect sizes and the moderation analyses might have interesting practical implications. In particular, regarding the moderation effects of age in the case of values and emotions, our results suggest that these variables could represent key target factors for intervention strategies addressed to younger generations. Likewise, the moderation effect of gender in the association between energy saving behavior and emotions, suggest how these might be a specific factor to be addressed in practical interventions or persuasion campaigns designed purposively to influence energy choices among men, rather than women. Once again, it is not easy to provide a clearcut explanation for these moderation effects, particularly in the case of gender differences: certainly, understanding age and gender differences in the determinants of energy-related choices is an interesting issue for future investigation.

Moderation effects by the typology of the sample recruited (e.g., student vs. non-student) and type of outcome measure (actual vs. self-reported behavior vs. behavioral intentions) are also interesting to discuss. Moderation effects by sample type showed larger effect sizes in student samples compared to non-student samples. Moderation effects by the type of outcome measure (actual vs. self-reported behavior vs. behavioral intentions) when assessing the attitude-behavior links suggest that attitudes are a significant predictor of both intentions and (to a lesser extent) of self-reported behavior. Conversely, our analysis suggests that attitudes might not be a good predictor of actual energy use (e.g., actual electricity consumption measured in kWh).

These kind of moderation effects suggest the existence of both conceptual and methodological issues in current social psychological research on energy saving behaviors (and in general). While it is out of the scope of this paper to discuss the reliability of self-reports in psychological investigation, or the fundamental aspects of the intention-behavior links, it is certainly possible to take these results as an interesting input for the debate on the ecological validity of psychological studies in general, and as a contribution to the necessity to embrace a deeper and more open self-reflexive stance on the quality of research practices in environmental, social and cognitive psychology.

Some limitations of the present study must also be acknowledged: for example, our meta-analytical tests of the effect sizes for values and emotions are based on a relatively limited number of studies. This suggest that these factors could have been under-investigated, at least in the temporal range that we

considered here, and in published studies: it might be the case that considering more recent studies and/or including "gray" literature in future meta-analysis could complement the present findings. This fact seems quite surprising in the case of values (a wide investigated variable in environmental psychological research), but less so in the case of emotions, which, on the contrary, have been rather neglected by people-environment studies in the past (e.g., Damasio, 1994; Carrus et al., 2008). This aspect suggests the need for more environmental psychological research on emotions and energy use, especially because emotions emerged from our meta-analysis as the factor having the largest effect size in relation to energy saving. Emotions are an essential motivational driver of human behavior and should thus be considered as a relevant tool to leverage people's transition to more sustainable energy-related decisions.

Another limitation is represented by our choice of the specific predictors to be included in the meta-analysis. Our choice was based on a previous exploration of the literature on energy choices and pro-environmental behaviors, as well as on widely known models of human deliberate action in the environmental domain (e.g., the Theory of Planned Behavior or the Value-Belief-Norm theory). However, other important variables could have been included in our analysis, such as for example personality traits, motives, skills, risk perception, or perception of costs and benefits: future meta-analysis or systematic reviews are thus needed to assess also the role of these factors in energy-related decisions.

In sum, we can conclude that, taken together results of the meta-analyses presented in this paper could have relevant applied implications for both academics and policy makers, as they can provide relevant insights to improve future studies on the psychological determinants of energy saving behaviors, and provide guidelines to tailor specific policies, intervention programs and public campaigns for changing human energy-related behaviors and promoting a sustainable energy transition.

DATA AVAILABILITY STATEMENT

The data analyzed in this study is subject to the following licenses/restrictions: MA data available on request to the corresponding author. Requests to access these datasets should be directed to giuseppe.carrus@uniroma3.it.

AUTHOR CONTRIBUTIONS

GC supervised the conception of the meta-analysis, conduction of the study, and contributed to the writing and revision of the manuscript. LT contributed to the data acquisition, coding, writing, and revision of the manuscript. AP performed the statistical tests and contributed to the conception of the meta-analysis, conduction of the study, writing, and revision of the manuscript. PC, IF, CK, SM, TM, and SV contributed to the writing and revision of the manuscript. All authors contributed to the article and approved the submitted version.

FUNDING

The study described in this paper is part of the ECHOES Project, which has received funding from the European Union's Horizon 2020 Research and Innovation Program, under grant agreement No. 727470. An extended description of this work appeared in public reports, delivered to the funding agency of the ECHOES project.

ACKNOWLEDGMENTS

An extended description of this work appeared in public reports delivered to the funding agency of the ECHOES project (see

Carrus et al., 2019 and Masson et al., 2017 in the reference list for source details).

The data described in this paper were also part of oral communications, presented by the authors, during the 25th IAPS-International Association for People-environment Studies, Rome, Italy, 2018 (see Tiberio et al., 2018. *Psychological Determinants of Energy Saving Behavior: An Individual Level Metaanalysis*. <http://iaps2018.com/wp-content/uploads/2018/07/IAPS-2018-Conference-Program-1.pdf>) and at the 2nd ICEP - International Conference on Environmental Psychology, Plymouth, UK, 2019 (see Carrus et al., 2019. *A Meta-analysis on the psychological determinants of energy saving behavior*. <https://icep2019.exordo.com/programme/presentation/289>).

REFERENCES

- Abrahamse, W., and Steg, L. (2009). How do socio-demographic and psychological factors relate to households' direct and indirect energy use and savings? *J. Econ. Psychol.* 30, 711–720. doi: 10.1016/j.joep.2009.05.006
- Abrahamse, W., and Steg, L. (2011). Factors related to household energy use and intention to reduce it: the role of psychological and socio-demographic variables. *Hum. Ecol. Rev.* 18, 30–40. Available online at: <https://www.jstor.org/stable/24707684>
- Abrahamse, W., and Steg, L. (2013). Social influence approaches to encourage resource conservation: a meta-analysis. *Global Environ. Change* 23, 1773–1785. doi: 10.1016/j.gloenvcha.2013.07.029
- Abrahamse, W., Steg, L., Vlek, C., and Rothengatter, J. A. (2005). A review of intervention studies aimed at household energy conservation. *J. Environ. Psychol.* 25, 273–291. doi: 10.1016/j.jenvp.2005.08.002
- Afroz, R., Masud, M. M., Akhtar, R., Islam, M. A., and Duasa, J. B. (2015a). Consumer purchase intention towards environmentally friendly vehicles: an empirical investigation in Kuala Lumpur, Malaysia. *Environ. Sci. Pollut. Res.* 22, 16153–16163. doi: 10.1007/s11356-015-4841-8
- Afroz, R., Rahman, A., Masud, M. M., Akhtar, R., and Duasa, J. B. (2015b). How individual values and attitude influence consumers' purchase intention of electric vehicles—some insights from Kuala Lumpur, Malaysia. *Environ. Urbaniz. Asia* 6, 193–211. doi: 10.1177/0975425315589160
- Aini, M. S., Chan, S. C., and Syuhaily, O. (2013). Predictors of technical adoption and behavioural change to transport energy-saving measures in response to climate change. *Energy Policy* 61, 1055–1062. doi: 10.1016/j.enpol.2013.06.002
- Ajzen, I. (1991). The theory of planned behavior. *Organ. Behav. Hum. Decis. Process.* 50, 179–211. doi: 10.1016/0749-5978(91)90020-T
- Ajzen, I., Joyce, N., Sheikh, S., and Cote, N. G. (2011). Knowledge and the prediction of behavior: the role of information accuracy in the theory of planned behavior. *Basic Appl. Soc. Psych.* 33, 101–117. doi: 10.1080/01973533.2011.568834
- Akman, I., and Mishra, A. (2015). Sector diversity in green information technology practices: technology acceptance model perspective. *Comput. Hum. Behav.* 49, 477–486. doi: 10.1016/j.chb.2015.03.009
- Alam, S. S., Hashim, N. H. N., Rashid, M., Omar, N. A., Ahsan, N., and Ismail, M. D. (2014). Small-scale households renewable energy usage intention: Theoretical development and empirical settings. *Renew. Energy*, 68, 255–263. doi: 10.1016/j.renene.2014.02.010
- Alam, S. S., and Rashid, M. (2012). Intention to use renewable energy: mediating role of attitude. *Energy Res. J.* 3, 37–44. doi: 10.3844/erjsp.2012.37.44
- Al-Amin, A. Q., Ambrose, A. F., Masud, M. M., and Azam, M. N. (2016). People purchase intention towards hydrogen fuel cell vehicles: an experiential enquiry in Malaysia. *Int. J. Hydrog. Energy* 41, 2117–2127. doi: 10.1016/j.ijhydene.2015.11.146
- Andor, M. A., and Fels, K. M. (2018). Behavioral economics and energy conservation—a systematic review of non-price interventions and their causal effects. *Ecol. Econ.* 148, 178–210. doi: 10.1016/j.ecolecon.2018.01.018
- Azar, E., and Al Ansari, H. (2017). Framework to investigate energy conservation motivation and actions of building occupants: The case of a green campus in Abu Dhabi, UAE. *Appl. Energy* 190, 563–573. doi: 10.1016/j.apenergy.2016.12.128
- Bamberg, S., and Möser, G. (2007). Twenty years after hines, hungerford, and tomera: a new meta-analysis of psycho-social determinants of pro-environmental behaviour. *J. Environ. Psychol.* 27, 14–25. doi: 10.1016/j.jenvp.2006.12.002
- Barbarossa, C., Beckmann, S. C., De Pelsmacker, P., Moons, I., and Gwozdz, W. (2015). A self-identity based model of electric car adoption intention: a cross-cultural comparative study. *J. Environ. Psychol.* 42, 149–160. doi: 10.1016/j.jenvp.2015.04.001
- Barbarossa, C., De Pelsmacker, P., and Moons, I. (2017). Personal values, green self-identity and electric car adoption. *Ecol. Econ.* 140, 190–200. doi: 10.1016/j.ecolecon.2017.05.015
- Bergquist, M., Nilsson, A., and Schultz, W. P. (2019). A meta-analysis of field-experiments using social norms to promote pro-environmental behaviors. *Global Environ. Change* 59:101941. doi: 10.1016/j.gloenvcha.2019.101941
- Richard, E., and Kazmierczak, A. (2012). Are homeowners willing to adapt to and mitigate the effects of climate change?. *Clim. Change* 112, 633–654. doi: 10.1007/s10584-011-0257-8
- Bockarjova, M., and Steg, L. (2014). Can protection motivation theory predict pro-environmental behavior? Explaining the adoption of electric vehicles in the Netherlands. *Global Environ. Change* 28, 276–288. doi: 10.1016/j.gloenvcha.2014.06.010
- Borenstein, M., Hedges, L. V., Higgins, J. P. T., and Rothstein, H. R. (2009). *Introduction to Meta-Analysis*. Hoboken, NJ: John Wiley and Sons. doi: 10.1002/9780470743386
- Borenstein, M., Hedges, L. V., Higgins, J. P. T., and Rothstein, H. R. (2010). A basic introduction to fixed-effect and random-effects models for meta-analysis. *Res. Synth. Methods* 1, 97–111. doi: 10.1002/jrsm.12
- Borenstein, M., Hedges, L. V., Higgins, J. P. T., and Rothstein, H. R. (2014). *Comprehensive Meta Analysis Version 3.0 [Computer Software]*. Englewood, NJ: Biostat.
- Bouman, T., and Steg, L. (2020). Motivating climate action. *Appl. Psychol. Around World* 2, 13–16. Available online at: https://iaapsy.org/site/assets/files/1082/apaw_2020_sep_vol2_3.pdf#page=13
- Buckley, P. (2020). Prices, information and nudges for residential electricity conservation: A meta-analysis. *Ecol. Econ.* 172:106635. doi: 10.1016/j.ecolecon.2020.106635
- Carmi, N., Arnon, S., and Orion, N. (2015). Seeing the forest as well as the trees: general vs. specific predictors of environmental behavior. *Environ. Educ. Res.* 21, 1011–1028. doi: 10.1080/13504622.2014.949626
- Carrus, G., Chokrai, P., Fritsche, I., Klöckner, C. A., Masson, T., Panno, A., et al. (2019). *Psychological Factors in Energy Decisions: Results From Experimental Studies and a Multinational Survey*. Available online at: <https://echoes-project.eu/sites/echoes.drupal.pulsartecnalia.com/files/D4.2%20%28R1%29.pdf> (accessed May 13, 2021).

- Carrus, G., Passafaro, P., and Bonnes, M. (2008). Emotions, habits and rational choices in ecological behaviours: The case of recycling and use of public transportation. *J. Environ. Psychol.* 28, 51–62. doi: 10.1016/j.jenvp.2007.09.003
- Carrus, G., Pirchio, S., and Tiberio, L. (2020). Transitions to sustainability, lifestyles changes and human well-being: cultural, environmental and political challenges. *Psychology* 11, 163–169. doi: 10.1080/21711976.2020.1734411
- Claudy, M. C., Peterson, M., and O'Driscoll, A. (2013). Understanding the attitude-behavior gap for renewable energy systems using behavioral reasoning theory. *J. Macromarket.* 33, 273–287. doi: 10.1177/0276146713481605
- Clayton, S. (2020). Psychologists' involvement in addressing climate change. *Appl. Psychol. Around World* 2, 10–12. doi: 10.4337/9781800371781.00010
- Collins, C. M., Steg, L., and Koning, M. A. (2007). Customers' values, beliefs on sustainable corporate performance, and buying behavior. *Psychol. Market.* 24, 555–577. doi: 10.1002/mar.20173
- Cooper, H. (1998). *Synthesizing Research: A Guide for Literature Reviews (3rd edition)*. Thousand Oaks, CA: Sage.
- Craig, C. A., and Allen, M. W. (2014). Enhanced understanding of energy ratepayers: Factors influencing perceptions of government energy efficiency subsidies and utility alternative energy use. *Energy Policy* 66, 224–233. doi: 10.1016/j.enpol.2013.10.074
- Damasio, A. R. (1994). *Descartes' Error: Emotion, Reason, and The Human Brain*. New York, NY: Grosset/Putnam.
- Degirmenci, K., and Breitner, M. H. (2017). Consumer purchase intentions for electric vehicles: is green more important than price and range?. *Transport. Res. Part D: Transport Environ.* 51, 250–260. doi: 10.1016/j.trd.2017.01.001
- Delmas, M. A., Fischlein, M., and Asensio, O. I. (2013). Information strategies and energy conservation behavior: a meta-analysis of experimental studies from 1975–2011. *Energy Policy* 61, 729–739. doi: 10.1016/j.enpol.2013.05.109
- Dixon, G. N., Deline, M. B., McComas, K., Chambliss, L., and Hoffmann, M. (2015). Saving energy at the workplace: the salience of behavioral antecedents and sense of community. *Energy Res. Soc. Sci.* 6, 121–127. doi: 10.1016/j.erss.2015.01.004
- Elgaaid, L. (2012). Exploring the role of anticipated guilt on pro-environmental behavior—a suggested typology of residents in France based on their recycling patterns. *J. Consumer Market.* 29, 369–377. doi: 10.1108/07363761211247488
- Engelken, M., Römer, B., Drescher, M., and Welp, I. (2016). Transforming the energy system: why municipalities strive for energy self-sufficiency. *Energy Policy* 98, 365–377. doi: 10.1016/j.enpol.2016.07.049
- Ferguson, M. A., and Branscombe, N. R. (2010). Collective guilt mediates the effect of beliefs about global warming on willingness to engage in mitigation behavior. *J. Environ. Psychol.* 30, 135–142. doi: 10.1016/j.jenvp.2009.11.010
- Field, A. P. (2001). Meta-analysis of correlation coefficients: a monte carlo comparison of fixed- and random-effects methods. *Psychol. Methods* 6, 161–180. doi: 10.1037/1082-989X.6.2.161
- Fornara, F., Pattitoni, P., Mura, M., and Strazzera, E. (2016). Predicting intention to improve household energy efficiency: the role of value-belief-norm theory, normative and informational influence, and specific attitude. *J. Environ. Psychol.* 45, 1–10. doi: 10.1016/j.jenvp.2015.11.001
- Frederiks, E., Stenner, K., and Hobman, E. (2015). Household energy use: applying behavioural economics to understand consumer decisionmaking and behaviour. *Renew. Sustain. Energy Rev.* 41, 1385–1394. doi: 10.1016/j.rser.2014.09.026
- Fritsche, I., Barth, M., Jugert, P., Masson, T., and Reese, G. (2018). A social identity model of pro-environmental action (SIMPEA). *Psychol. Rev.* 125:245. doi: 10.1037/rev0000090
- Gaspar, R., and Antunes, D. (2011). Energy efficiency and appliance purchases in Europe: Consumer profiles and choice determinants. *Energy Policy* 39, 7335–7346. doi: 10.1016/j.enpol.2011.08.057
- Gerpott, T. J., and Paukert, M. (2013). Determinants of willingness to pay for smart meters: An empirical analysis of household customers in Germany. *Energy Policy* 61, 483–495. doi: 10.1016/j.enpol.2013.06.012
- Gifford, R., and Sussman, R. (2012). "Environmental attitudes," in *The Oxford Handbook of Environmental and Conservation Psychology*, ed S. Clayton (New York, NY: Oxford University Press), 65–80. doi: 10.1093/oxfordhb/9780199733026.013.0004
- Girod, B., Mayer, S., and Nägele, F. (2017). Economic versus belief-based models: shedding light on the adoption of novel green technologies. *Energy Policy* 101, 415–426. doi: 10.1016/j.enpol.2016.09.065
- Grob, A. (1995). A structural model of environmental attitudes and behaviour. *J. Environ. Psychol.* 15, 209–220. doi: 10.1016/0272-4944(95)90004-7
- Halder, P., Pietarinen, J., Havu-Nuutinen, S., Pöllänen, S., and Pelkonen, P. (2016). The theory of planned behavior model and students' intentions to use bioenergy: a cross-cultural perspective. *Renew. Energy* 89, 627–635. doi: 10.1016/j.renene.2015.12.023
- Han, L., Wang, S., Zhao, D., and Li, J. (2017). The intention to adopt electric vehicles: Driven by functional and non-functional values. *Transport. Res. Part A: Policy Practice* 103, 185–197. doi: 10.1016/j.tra.2017.05.033
- Hansla, A., Gamble, A., Juliusson, A., and Gärling, T. (2008). Psychological determinants of attitude towards and willingness to pay for green electricity. *Energy Policy* 36, 768–774. doi: 10.1016/j.enpol.2007.10.027
- Hartig, T. (2020). Special project on climate change: Issue introduction. *Appl. Psychol. Around World* 2, 6–9. Available online at: https://iaapsy.org/site/assets/files/1082/apaw_2020_sep_vol2_3.pdf#page=13
- Hatzl, S., Brudermann, T., Reinsberger, K., and Posch, A. (2014). Do public programs in 'energy regions' affect citizen attitudes and behavior?. *Energy Policy* 69, 425–429. doi: 10.1016/j.enpol.2014.02.002
- He, X., and Zhan, W. (2017). How to activate moral norm to adopt electric vehicles in China? An empirical study based on extended norm activation theory. *J. Clean. Product.* 172, 3546–3556. doi: 10.1016/j.jclepro.2017.05.088
- Hedges, L. V., and Vevea, J. L. (1998). Fixed- and random-effects models in meta-analysis. *Psychol. Methods* 3, 486–504. doi: 10.1037/1082-989X.3.4.486
- Hertel, M., and Menrad, K. (2016). Adoption of energy-efficient technologies in German SMEs of the horticultural sector—the moderating role of personal and social factors. *Energy Effic.* 9, 791–806. doi: 10.1007/s12053-015-9400-0
- Higgins, J. P., Thompson, S. G., Deeks, J. J., and Altman, D. G. (2003). Measuring inconsistency in meta-analyses. *BMJ* 327, 557–560. doi: 10.1136/bmj.327.7414.557
- Higgins, J. P. T., and Thompson, S. G. (2002). Quantifying heterogeneity in a meta-analysis. *Stat. Med.* 21, 1539–1558. doi: 10.1002/sim.1186
- Hine, D. W., Marks, A. D. G., Nachreiner, M., Gifford, R., and Heath, Y. (2007). Keeping the home fires burning: The affect heuristic and wood smoke pollution. *J. Environ. Psychol.* 27, 26–32. doi: 10.1016/j.jenvp.2007.01.001
- Hobman, E. V., and Frederiks, E. R. (2014). Barriers to green electricity subscription in Australia: "Love the environment, love renewable energy... but why should I pay more?" *Energy Res. Soc. Sci.* 3, 78–88. doi: 10.1016/j.erss.2014.07.009
- Huddart-Kennedy, E., Beckley, T. M., McFarlane, B. L., and Nadeau, S. (2009). Rural-urban differences in environmental concern in Canada. *Rural Sociol.* 74, 309–329. doi: 10.1526/003601109789037268
- Kaiser, F. G. (2006). A moral extension of the theory of planned behavior: Norms and anticipated feelings of regret in conservationism. *Pers. Individ. Dif.* 41, 71–81. doi: 10.1016/j.paid.2005.11.028
- Karlin, B., Zinger, J. F., and Ford, R. (2015). The effects of feedback on energy conservation: A meta-analysis. *Psychol. Bull.* 141, 1205–1227. doi: 10.1037/a0039650
- Karytsas, S., and Theodoropoulou, H. (2014). Public awareness and willingness to adopt ground source heat pumps for domestic heating and cooling. *Renew. Sustain. Energy Rev.* 34, 49–57. doi: 10.1016/j.rser.2014.02.008
- Khorasanizadeh, H., Honarpour, A., Park, M. S. A., Parkkinen, J., and Parthiban, R. (2016). Adoption factors of cleaner production technology in a developing country: energy efficient lighting in Malaysia. *J. Clean. Product.* 131, 97–106. doi: 10.1016/j.jclepro.2016.05.070
- Kim, H., Park, E., Kwon, S. J., Ohm, J. Y., and Chang, H. J. (2014). An integrated adoption model of solar energy technologies in South Korea. *Renew. Energy* 66, 523–531. doi: 10.1016/j.renene.2013.12.022
- Klößner, C. A., Nayum, A., and Mehmetoglu, M. (2013). Positive and negative spillover effects from electric car purchase to car use. *Transport. Res. Part D: Transport Environ.* 21, 32–38. doi: 10.1016/j.trd.2013.02.007
- Korcaj, L., Hahnel, U. J., and Spada, H. (2015). Intentions to adopt photovoltaic systems depend on homeowners' expected personal gains and behavior of peers. *Renew. Energy* 75, 407–415. doi: 10.1016/j.renene.2014.10.007

- LeDoux, J. (2012). Rethinking the emotional brain. *Neuron* 73, 653–676. doi: 10.1016/j.neuron.2012.02.004
- Levine, D. S., and Leven, S. J. (2014). *Motivation, Emotion, and Goal Direction in Neural Networks (2nd Ed.)*. New York, NY: Psychology Press. doi: 10.4324/9781315807775
- Li, X., Clark, C. D., Jensen, K. L., Yen, S. T., and English, B. C. (2013). Consumer purchase intentions for flexible-fuel and hybrid-electric vehicles. *Transport. Res. Part D: Transport Environ.* 18, 9–15. doi: 10.1016/j.trd.2012.08.001
- Lillemo, S. C. (2014). Measuring the effect of procrastination and environmental awareness on households' energy-saving behaviours: An empirical approach. *Energy Policy* 66, 249–256. doi: 10.1016/j.enpol.2013.10.077
- Lin, C. Y., and Syrgabayeva, D. (2016). Mechanism of environmental concern on intention to pay more for renewable energy: application to a developing country. *Asia Pacif. Manage. Rev.* 21, 125–134. doi: 10.1016/j.apmr.2016.01.001
- Litvine, D., and Wüstenhagen, R. (2011). Helping “light green” consumers walk the talk: results of a behavioural intervention survey in the Swiss electricity market. *Ecol. Econ.* 70, 462–474. doi: 10.1016/j.ecolecon.2010.10.005
- Lu, H., and Schuldt, J. P. (2015). Exploring the role of incidental emotions in support for climate change policy. *Clim. Change*, 131, 719–726. doi: 10.1007/s10584-015-1443-x
- Manstead, A. S. R. (1996). “Attitudes and behaviour,” in *Applied Social Psychology*, eds G. R. Semin and K. Fiedler (London: Sage). doi: 10.4135/9781446250556.n1
- Masson, T., Panno, A., Tiberio, L., Vesely, S., Carrus, G., Fritsche, I., et al. (2017). *Identity Processes and Individual Factors in Energy Decisions: Two Comprehensive Meta-Analyses*. Available online at: <https://echoes-project.eu/sites/echoes.drupal.pulsartecnalia.com/files/D4.1.pdf> (accessed May 13, 2021).
- Menon, B. G., and Mahanty, B. (2016). Modeling Indian four-wheeler commuters' travel behavior concerning fuel efficiency improvement policy. *Travel Behav. Soc.* 4, 11–21. doi: 10.1016/j.tbs.2015.11.003
- Mohamed, M., Higgins, C., Ferguson, M., and Kanaroglou, P. (2016). Identifying and characterizing potential electric vehicle adopters in Canada: a two-stage modelling approach. *Transport Policy* 52, 100–112. doi: 10.1016/j.tranpol.2016.07.006
- Moher, D., Liberati, A., Tetzlaff, J., and Altman, D. G. (2009). Preferred reporting items for systematic reviews and meta-analyses: The PRISMA statement. *Ann. Intern. Med.* 151, 264–269. doi: 10.7326/0003-4819-151-4-200908180-00135
- Moons, I., and De Pelsmacker, P. (2012). Emotions as determinants of electric car usage intention. *J. Market. Manage.* 28, 195–237. doi: 10.1080/0267257X.2012.659007
- Murtagh, N., Nati, M., Headley, W. R., Gatersleben, B., Gluhak, A., Imran, M. A., et al. (2013). Individual energy use and feedback in an office setting: A field trial. *Energy Policy* 62, 717–728. doi: 10.1016/j.enpol.2013.07.090
- Nakada, T., Shin, K., and Managi, S. (2016). The effect of demand response on purchase intention of distributed generation: Evidence from Japan. *Energy Policy* 94, 307–316. doi: 10.1016/j.enpol.2016.04.026
- Nayum, A., and Klöckner, C. A. (2014). A comprehensive socio-psychological approach to car type choice. *J. Environ. Psychol.* 40, 401–411. doi: 10.1016/j.jenvp.2014.10.001
- Nayum, A., Klöckner, C. A., and Mehmetoglu, M. (2016). Comparison of socio-psychological characteristics of conventional and battery electric car buyers. *Travel Behav. Soc.* 3, 8–20. doi: 10.1016/j.tbs.2015.03.005
- Nguyen, T. N., Lobo, A., and Greenland, S. (2016). Pro-environmental purchase behaviour: The role of consumers' biospheric values. *J. Retail. Consumer Serv.* 33, 98–108. doi: 10.1016/j.jretconser.2016.08.010
- Nisa, C. F., Bélanger, J. J., Schumpe, B. M., and Faller, D. G. (2019). Meta-analysis of randomised controlled trials testing behavioural interventions to promote household action on climate change. *Nat. Commun.* 10:4545. doi: 10.1038/s41467-019-12457-2
- Nordlund, A. M., and Garvill, J. (2002). Value structures behind proenvironmental behavior. *Environ. Behav.* 34, 740–756. doi: 10.1177/001391602237244
- Ockwell, D., Whitmarsh, L., and O'Neill, S. (2009). Reorienting climate change communication for effective mitigation: forcing people to be green or fostering grass-roots engagement?. *Sci. Commun.* 30, 305–327. doi: 10.1177/1075547008328969
- Onwezen, M. C., Antonides, G., and Bartels, J. (2013). The Norm Activation Model: An exploration of the functions of anticipated pride and guilt in pro-environmental behaviour. *J. Econ. Psychol.* 39, 141–153. doi: 10.1016/j.joep.2013.07.005
- Panno, A., Donati, M. A., Chiesi, F., and Primi, C. (2015). Trait emotional intelligence is related to risk-taking through negative mood and anticipated fear. *Soc. Psychol.* 46, 361–367. doi: 10.1027/1864-9335/a000247
- Park, E., and Ohm, J. Y. (2014). Factors influencing the public intention to use renewable energy technologies in South Korea: Effects of the Fukushima nuclear accident. *Energy Policy* 65, 198–211. doi: 10.1016/j.enpol.2013.10.037
- Partanen-Hertell, M., Harju-Autti, P., Kreft-Burman, K., and Pemberton, D. (1999). *Raising Environmental Awareness in the Baltic Sea Area*. Helsinki: Finnish Environment Institute.
- Passafaro, P., Rimano, A., Piccini, M. P., Metastasio, R., Gambardella, V., Gullace, G., et al. (2014). The bicycle and the city: desires and emotions versus attitudes, habits and norms. *J. Environ. Psychol.* 38, 76–83. doi: 10.1016/j.jenvp.2013.12.011
- Peterson, R. A., and Brown, S. P. (2005). On the use of beta coefficients in meta-analysis. *J. Appl. Psychol.* 90, 175–181. doi: 10.1037/0021-9010.90.1.175
- Pettifor, H., Wilson, C., and Chrysoschoidis, G. (2015). The appeal of the green deal: Empirical evidence for the influence of energy efficiency policy on renovating homeowners. *Energy Policy* 79, 161–176. doi: 10.1016/j.enpol.2015.01.015
- Poortinga, W., Steg, L., and Vlek, C. (2004). Values, environmental concern, and environmental behavior: A study into household energy use. *Environ. Behav.* 36, 70–93. doi: 10.1177/0013916503251466
- Prete, M. I., Piper, L., Rizzo, C., Pino, G., Capestro, M., Milet, A., et al. (2017). Determinants of Southern Italian households' intention to adopt energy efficiency measures in residential buildings. *J. Clean. Product.* 153, 83–91. doi: 10.1016/j.jclepro.2017.03.157
- Rai, V., and Beck, A. L. (2017). Play and learn: Serious games in breaking informational barriers in residential solar energy adoption in the United States. *Energy Res. Soc. Sci.* 27, 70–77. doi: 10.1016/j.erss.2017.03.001
- Rees, J. H., Klug, S., and Bamberg, S. (2015). Guilty conscience: motivating pro-environmental behavior by inducing negative moral emotions. *Clim. Change* 130, 439–452. doi: 10.1007/s10584-014-1278-x
- Rosenthal, R. (1979). The file drawer problem and tolerance for null results. *Psychol. Bull.* 86, 638–664. doi: 10.1037/0033-2909.86.3.638
- Sapci, O., and Considine, T. (2014). The link between environmental attitudes and energy consumption behavior. *J. Behav. Experi. Econ.* 52, 29–34. doi: 10.1016/j.socec.2014.06.001
- Schneider, C. R., Zaval, L., Weber, E. U., and Markowitz, E. M. (2017). The influence of anticipated pride and guilt on pro-environmental decision making. *PLoS ONE* 12:e0188781. doi: 10.1371/journal.pone.0188781
- Schultz, P. W. (2000). New environmental theories: Empathizing with nature: The effects of perspective taking on concern for environmental issues. *J. Soc. Issues* 56, 391–406. doi: 10.1111/0022-4537.00174
- Schultz, P. W., Gouveia, V. V., Cameron, L. D., Tankha, G., Schmuck, P., and Franek, M. (2005). Values and their relationship to environmental concern and conservation behavior. *J. Cross. Cult. Psychol.* 36, 457–475. doi: 10.1177/0022022105275962
- Schwartz, S. H. (1977). “Normative influences on altruism,” in *Advances in Experimental Social Psychology*, ed L. Berkowitz (New York, NY: Academic Press). doi: 10.1016/S0065-2601(08)60358-5
- Scott, F. L., Jones, C. R., and Webb, T. L. (2014). What do people living in deprived communities in the UK think about household energy efficiency interventions?. *Energy Policy* 66, 335–349. doi: 10.1016/j.enpol.2013.10.084
- Sheeran, P. (2002). Intention—behavior relations: A conceptual and empirical review. *Eur. Rev. Soc. Psychol.* 12, 1–36. doi: 10.1080/1479272143000003
- Shi, H., Wang, S., and Zhao, D. (2017). Exploring urban resident's vehicular PM2.5 reduction behavior intention: an application of the extended theory of planned behavior. *J. Clean. Product.* 147, 603–613. doi: 10.1016/j.jclepro.2017.01.108
- Spence, A., Poortinga, W., Pidgeon, N., and Lorenzoni, I. (2010). Public perceptions of energy choices: The influence of beliefs about climate change and the environment. *Energy Environ.* 21, 385–407. doi: 10.1260/0958-305X.21.5.385
- Staats, H. (2003). “Understanding attitudes and behavior: An analysis and review of research based on the theory of planned behavior,” in *Psychological Theories and Environmental Issues*, eds M. Bonnes, T. Lee, and M. Bonaiuto (Aldershot: Ashgate).

- Steg, L. (2008). Promoting household energy conservation. *Energy Policy* 36, 4449–4453. doi: 10.1016/j.enpol.2008.09.027
- Steg, L., and De Groot, J. I. (2012). “Environmental values,” in *The Oxford Handbook of Environmental and Conservation Psychology*, ed S. Clayton (New York, NY: Oxford University Press), 81–92. doi: 10.1093/oxfordhb/9780199733026.013.0005
- Steg, L., Perlaviciute, G., and van der Werff, E. (2015). Understanding the human dimensions of a sustainable energy transition. *Front. Psychol.* 6:805. doi: 10.3389/fpsyg.2015.00805
- Stern, P. C., Dietz, T., Abel, T., Guagnano, G. A., and Kalof, L. (1999). A value-belief-norm theory of support for social movements: The case of environmental concern. *Hum. Ecol. Rev.* 6, 81–97.
- Taufik, D., Bolderdijk, J. W., and Steg, L. (2016). Going green? The relative importance of feelings over calculation in driving environmental intent in the Netherlands and the United States. *Energy Res. Soc. Sci.* 22, 52–62. doi: 10.1016/j.erss.2016.08.012
- Thornton, A. (2009). *Public Attitudes and Behaviours Towards the Environment - Tracker Survey: A Report to the Department for Environment, Food and Rural Affairs*. Defra: TNS.
- Tiberio, L., De Gregorio, E., Biresselioglu, M. E., Demir, M. H., Panno, A., and Carrus, G. (2020). Psychological processes and institutional actors in the sustainable energy transition: a case-study analysis of a local community in Italy. *Front. Psychol.* 11:980. doi: 10.3389/fpsyg.2020.00980
- Tiberio, L., Panno, A., Carrus, G., Mastandrea, S., Vesely, S., Masson, T., et al. (2018). “Psychological determinants of energy saving behaviour: an individual level meta-analysis,” in *Paper Presented at the 25th IAPS Conference* (Rome).
- Tsagarakis, K. P., Bounialetou, F., Gillas, K., Profylienou, M., Pollaki, A., and Zografakis, N. (2011). Tourists’ attitudes for selecting accommodation with investments in renewable energy and energy saving systems. *Renew. Sustain. Energy Rev.* 15, 1335–1342. doi: 10.1016/j.rser.2010.10.009
- Vaccaro, A., and Echeverri, D. P. (2010). Corporate transparency and green management. *J. Business Ethics* 95, 487–506. doi: 10.1007/s10551-010-0435-z
- van der Werff, E., and Steg, L. (2015). One model to predict them all: predicting energy behaviours with the norm activation model. *Energy Res. Soc. Sci.* 6, 8–14. doi: 10.1016/j.erss.2014.11.002
- van Valkengoed, A. M., and Steg, L. (2019). Meta-analyses of factors motivating climate change adaptation behaviour. *Nat. Clim. Change* 9, 158–163. doi: 10.1038/s41558-018-0371-y
- Wang, J., and Wu, L. (2016). The impact of emotions on the intention of sustainable consumption choices: evidence from a big city in an emerging country. *J. Clean. Product.* 126, 325–336. doi: 10.1016/j.jclepro.2016.03.119
- Wang, Z., Wang, X., and Guo, D. (2017). Policy implications of the purchasing intentions towards energy-efficient appliances among China’s urban residents: Do subsidies work?. *Energy Policy* 102, 430–439. doi: 10.1016/j.enpol.2016.12.049
- Wang, Z., Zhang, B., Yin, J., and Zhang, Y. (2011). Determinants and policy implications for household electricity-saving behaviour: evidence from Beijing, China. *Energy Policy* 39, 3550–3557. doi: 10.1016/j.enpol.2011.03.055
- Webb, D., Soutar, G. N., Mazzarol, T., and Saldaris, P. (2013). Self-determination theory and consumer behavioural change: Evidence from a household energy-saving behaviour study. *J. Environ. Psychol.* 35, 59–66. doi: 10.1016/j.jenvp.2013.04.003
- Webb, T. L., and Sheeran, P. (2006). Does changing behavioral intentions engender behavior change? A meta-analysis of the experimental evidence. *Psychol. Bull.* 132:249. doi: 10.1037/0033-2909.132.2.249
- Whitmarsh, L. (2011). Scepticism and uncertainty about climate change: Dimensions, determinants and change over time. *Global Environ. Change* 21, 690–700. doi: 10.1016/j.gloenvcha.2011.01.016
- Whitmarsh, L., Capstick, S., Moore, I., Köhler, J., and Le Quéré, C. (2020). Use of aviation by climate change researchers: Structural influences, personal attitudes, and information provision. *Global Environ. Change* 65:102184. doi: 10.1016/j.gloenvcha.2020.102184
- Wittenberg, I., and Matthies, E. (2016). Solar policy and practice in Germany: How do residential households with solar panels use electricity? *Energy Res. Soc. Sci.* 21, 199–211. doi: 10.1016/j.erss.2016.07.008
- Wolske, K. S., Stern, P. C., and Dietz, T. (2017). Explaining interest in adopting residential solar photovoltaic systems in the United States: Toward an integration of behavioral theories. *Energy Res. Soc. Sci.* 25, 134–151. doi: 10.1016/j.erss.2016.12.023
- Yang, S., Zhang, Y., and Zhao, D. (2016). Who exhibits more energy-saving behavior in direct and indirect ways in china? The role of psychological factors and socio-demographics. *Energy Policy* 93, 196–205. doi: 10.1016/j.enpol.2016.02.018
- Yun, S., and Lee, J. (2015). Advancing societal readiness toward renewable energy system adoption with a socio-technical perspective. *Technol. Forecast. Soc. Change* 95, 170–181. doi: 10.1016/j.techfore.2015.01.016
- Zhang, X., Wang, K., Hao, Y., Fan, J. L., and Wei, Y. M. (2013). The impact of government policy on preference for NEVs: the evidence from China. *Energy Policy* 61, 382–393. doi: 10.1016/j.enpol.2013.06.114
- Zhang, Y., Wang, Z., and Zhou, G. (2013). Antecedents of employee electricity saving behavior in organizations: An empirical study based on norm activation model. *Energy Policy* 62, 1120–1127. doi: 10.1016/j.enpol.2013.07.036
- Zierler, R., Wehrmeyer, W., and Murphy, R. (2017). The energy efficiency behaviour of individuals in large organisations: A case study of a major UK infrastructure operator. *Energy Policy* 104, 38–49. doi: 10.1016/j.enpol.2017.01.033

Conflict of Interest: The authors declare that the research was conducted in the absence of any commercial or financial relationships that could be construed as a potential conflict of interest.

Copyright © 2021 Carrus, Tiberio, Mastandrea, Chokrai, Fritsche, Klöckner, Masson, Vesely and Panno. This is an open-access article distributed under the terms of the Creative Commons Attribution License (CC BY). The use, distribution or reproduction in other forums is permitted, provided the original author(s) and the copyright owner(s) are credited and that the original publication in this journal is cited, in accordance with accepted academic practice. No use, distribution or reproduction is permitted which does not comply with these terms.