

Lawrence Berkeley National Laboratory

Lawrence Berkeley National Laboratory

Title

Putting Tumors in Context

Permalink

<https://escholarship.org/uc/item/47r5r4f0>

Author

Bissell, Mina

Publication Date

2001-10-01

DOI

10.1038/35094059

Peer reviewed

Putting Tumors in Context

Mina J. Bissell and Derek Radisky

Division of Life Sciences, Lawrence Berkeley National Laboratory
Berkeley, California 94720, USA.

Correspondence to M.J.B.
e-mail: mjbissell@lbl.gov

LBNL/DOE funding & contract number: DE-AC02-05CH11231

The interactions between cancer cells and their micro- and macroenvironment create a context that promotes tumour growth and protects it from immune attack. The functional association of cancer cells with their surrounding tissues forms a new ‘organ’ that changes as malignancy progresses. Investigation of this process might provide new insights into the mechanisms of tumorigenesis and could also lead to new therapeutic targets.

Under normal conditions, ORGANS are made up of TISSUES that exchange information with other cell types via cell–cell contact, cytokines and the EXTRACELLULAR MATRIX (ECM). The ECM, which is produced by collaboration between STROMAL fibroblasts and EPITHELIAL cells, provides structural scaffolding for cells, as well as contextual information. The endothelial vasculature provides nutrients and oxygen, and cells of the immune system combat pathogens and remove apoptotic cells. Epithelial cells associate into intact, polarized sheets. These tissues communicate through a complex network of interactions: physically, through direct contact or through the intervening ECM, and biochemically, through both soluble and insoluble signalling molecules. In combination, these interactions provide the information that is necessary to maintain cellular differentiation and to create complex tissue structures.

Occasionally, the intercellular signals that define the normal context become disrupted. Alterations in epithelial tissues can lead to movement of epithelial sheets and proliferation — for example, after activation of mesenchymal fibroblasts due to wounding. Normally, these conditions are temporary and reversible, but when inflammation is sustained, an escalating feedback loop ensues. Under persistent inflammatory conditions, continual upregulation of enzymes such as matrix metalloproteinases (MMPs) by stromal fibroblasts can disrupt the ECM, and invading immune cells can overproduce factors that promote abnormal proliferation. As this process progresses, the normal organization of the organ is replaced by a functional disorder (FIG. 1). If there are pre-existing epithelial cells within this changing context that possess tumorigenic potential, they can start to proliferate. Alternatively, the abnormal interactions might lead to genomic instability within the epithelial cells and the acquisition of tumorigenic potential. The proliferating cancer cells can then interact with their microenvironment and enhance the abnormal interactions. At this point, the tumour has become its own organ, with a distinct context that now defines all its cellular responses. Here, we will examine how the mechanisms that contribute to the normal context also act to suppress developing tumours, how disruption of this context initiates and supports the process of tumorigenicity, and how some cells with a tumorigenic genotype can become phenotypically normal if the context is appropriately manipulated.

An innate anticancer mechanism

An important feature of the normal stromal context is the generation and maintenance of epithelial-cell polarity. Epithelial cells receive a variety of orientational cues from the environment that help them establish cellular apical and basal surfaces and to maintain the differentiated state. Loss of polarity has been shown to lead to increased cell proliferation and tumorigenesis (BOX 1). The basal surface of epithelial cells associates with the BASEMENT MEMBRANE, a specialized form of ECM that provides both structural support and polarization signals to epithelia. The basement membrane is a dynamic structure. Changes in its composition lead to changes in cell shape and behaviour¹, altered binding affinity or cellular distribution of

cell-surface receptors², and cellular responses to soluble molecules³. Depending on the composition and physical characteristics of the basement membrane, different soluble factors can have completely different cellular effects, such as inducing cell proliferation, growth arrest, differentiation or apoptosis⁴.

Epithelial cells maintain physical contact with their neighbours through a combination of ADHERENS JUNCTIONS, GAP JUNCTIONS, TIGHT JUNCTIONS and DESMOSOMES (FIG. 2). Of these, adherens junctions have been a particular focus of studies into the signals that generate epithelial-cell polarity, but more recent investigations have revealed mechanisms by which gap junctions, tight junctions and desmosomes also contribute to the formation of polarized epithelial tissues⁵⁻⁸.

Adherens junctions are contacts between adjacent epithelial cells and are anchored to the cytoskeleton. Cadherins (such as E-CADHERIN) traverse the membrane, associating with cadherins on adjacent cells in a calcium-dependent manner. On the cytoplasmic face, β -catenin connects to the cadherin tail and associates with α -catenin, which in turn binds to actin. Loss or alteration of these components leads to premalignant phenotypes and even tumorigenesis⁹⁻¹¹. Of these components, E-cadherin has been a particular target of study, as this molecule is lost in many types of tumour⁹, and its restoration can suppress cellular transformation. Decreased E-cadherin function is a component of EPITHELIAL-MESENCHYMAL TRANSITION, invasive tumour growth and metastasis¹¹⁻¹³. Loss of E-cadherin can be accompanied by increased expression of alternate cadherin isoforms that promote inappropriate survival signals and enhance the malignant phenotype¹⁴. However, as all cellular responses are tissue- and context-dependent, there can be no universal generalizations, as shown by the fact that E-cadherin gain of function is an early step in ovarian carcinoma¹⁵.

Gap junctions are channel-forming complexes that allow passive diffusion of small signalling molecules between neighbouring cells⁵. The particular composition of CONNEXIN subunits within a gap junction determines the type of molecule that can be transported¹⁶. Much remains to be learned about how the specific combination of connexins facilitates tissue interactions, but it is clear, again, that generalizations should be avoided, as the expression patterns (and probably the function) of connexins are tissue dependent and change during tumour progression^{17,18}. For example, some breast cancer cells upregulate connexin 32 (Cx32)¹⁹, but loss of Cx32 contributes to hepatocellular carcinoma^{20,21}; Cx43 inhibits tumorigenicity of lung, cervical and bladder carcinoma cells²²⁻²⁴, but has no effect on squamous cell carcinomas²⁵; and other connexins can facilitate cell adhesion during metastasis²⁶.

Changing interactions between adjacent tissues might also affect tumour development (FIG. 3). For example, in the normal human mammary gland (FIG. 1), the ductal-lobular system is composed of an inner layer of luminal epithelial cells, which line the duct and produce milk during lactation, and an outer layer of myoepithelial cells, which express a number of proteases during tissue remodelling to pave the way for emerging ductules. This double-layered structure is separated from the INTERSTITIAL MATRIX by an intact basement membrane²⁷. Breast cancer arises mainly in the luminal epithelial compartment, but myoepithelial cells also express molecules that have been shown to suppress transformation of luminal epithelial cells *in vivo*²⁷ (TABLE 1). These proteins have been named 'class II tumour suppressors'²⁸ and production

of these proteins allows myoepithelial cells to act as tumour suppressors in the breast^{27,29}.

In combination, these mechanisms create a dynamic equilibrium that helps cells to maintain a normal, differentiated phenotype. This equilibrium might attenuate the consequences of genetic mutations, as consideration of the frequency of spontaneous mutations indicates that many epithelial cells should possess oncogene-activating mutations, yet cells continue to function normally^{30,31}. Analyses of normal epithelial tissue adjacent to tumours have shown that similar patterns of mutations can be found in both, indicating that malignant cells can exist within normal tissues but be restrained by normal contextual cues³²⁻³⁴.

Activated stroma as a carcinogen

Whereas normal stroma can delay or prevent tumorigenesis, abnormal stromal components can promote tumour growth (FIG 4). Acquired or inherited mutations that alter stromal-cell function can release the suppression placed on context-inhibited malignant cells. Literature that spans more than a century has shown that inflammation associated with tissue wounding can produce tumours (REFS 35–38 and references therein) (BOX 2). Barcellos-Hoff and colleagues³⁹ have shown that irradiation of the mammary-gland stromal component promotes the tumorigenic potential of non-irradiated epithelial cells. These investigators had previously shown that even low levels of irradiation lead to remodelling of the ECM in breast tissue and activation of latent transforming growth factor- β (TGF- β), which affects tissue and organ function⁴⁰. Moinfar *et al.*⁴¹ examined genetic alterations in tumour-associated stroma from several independent cases of mammary carcinoma, and found chromosomal rearrangements that were not present in the malignant carcinoma cells. These results indicate that characteristic mutations that affect stromal cells might have contributed to the formation of the epithelial tumours. Moreover, studies of a subset of inherited cancer-susceptibility syndromes^{42,43} also indicate that alterations in stromal cells can contribute to tumorigenesis. So, aberrations in stroma can both precede and stimulate the development of epithelial cancers^{44,45}.

Matrix metalloproteinases

MMPs can degrade ECM and are involved in promoting the inflammatory response, normal tissue remodelling, wound healing and angiogenesis⁴⁶. These enzymes, however, also have an important function in malignancy (BOX 2). The sustained presence of these proteinases in the tumour environment, produced both by the activated cells and by the cancer cells, leads to destruction of normal ECM. Degradation of ECM stimulates both proliferative and apoptotic mechanisms, which can lead to the selection of apoptosis-resistant carcinoma cells and enhanced invasive potential^{47,48}. In the tumour context, direct association of MMPs with specific ECM receptors provides spatial control of MMP activity and directional signals to the invading tumour cells⁴⁹.

Stromelysin-1 (SL-1, also known as MMP-3), is an MMP that is involved in both mammary-gland development and breast cancer^{50,51}. Cellular context determines the response of mammary epithelial cells to SL-1 treatment: when grown in basement-membrane gels, mammary epithelial cells undergo growth arrest and become functionally differentiated; subsequent treatment of these cells with SL-1 causes apoptosis⁵². However, when cultured on two-dimensional matrices

and allowed to continuously proliferate, mammary epithelial cells react to treatment with SL-1 by undergoing an epithelial–mesenchymal transition and becoming tumorigenic⁵⁰.

In transgenic mice that express SL-1 in mammary luminal epithelial cells, the mammary glands show morphogenesis defects and contain pre-neoplastic lesions^{44,53,54} that eventually lead to full malignancies^{50,54}. Here, the causative mechanism seems to be that SL-1 — expressed ectopically at low levels in the epithelial cells — is subsequently produced at much higher levels by the stromal fibroblasts⁴⁴, showing that a moderate disruption contributes to a self-sustaining tumorigenic state. Similar reciprocal feedback mechanisms have been observed in transgenic mice with altered expression of MMP-7 (REF. 55), MMP-11 (REF. 56) and MT1-MMP⁵⁷.

Immune function in the tumour context

Immune surveillance is the mechanism by which the immune system targets and destroys developing malignancies. Investigations of transgenic mice with deficient responses to interferon- γ (IFN- γ), a cytokine that has been shown to be required for migration of T cells to tumour sites^{58,59}, have led to increased interest in the mechanisms by which immune cells target tumours^{60,61}. Although T cells seem to be the main effectors of immune surveillance⁶², the innate immune system (which includes natural killer cells, macrophages, monocytes and mast cells) is also involved^{63–65}.

Malignant cells evade immunosuppression by downregulating intrinsic immunogenicity^{66,67}. The tumour vasculature contributes to this process by preventing extravasation of the antitumour T cells, while continuing to allow the passage of innate immune cells⁶⁸. Studies by Gloria Heppner and colleagues (REF. 69, and references therein) showed that natural killer cells actually provided positive signals for progression of preneoplastic mammary lesions. This initially controversial concept has received support from recent investigations of carcinomas of the skin^{70,71}, pancreas⁷² and mammary gland⁷³, showing that innate immune cells promote tumorigenesis by producing MMPs, inducing the stroma to produce MMPs and by activating latent MMPs that are present in the ECM^{74–76}. The resultant increase in proteolytic activity potentiates tumour progression by further degrading ECM, activating tumour-associated fibroblasts and enhancing angiogenesis^{70,72}.

Macrophage migration inhibitory factor (MIF) is another immunomodulator that is associated with tumour progression. This cytokine has been shown to be overexpressed by tumour cells⁷⁷, contributing to neoangiogenesis and to epithelial cell proliferation⁷⁷, as well as suppressing immune surveillance⁷⁸. MIF might also contribute to the genomic instability within tumours, as MIF suppresses p53 function⁷⁹, potentially leading to the attenuation of normal apoptosis and growth-arrest mechanisms and allowing for the accumulation of additional oncogenic mutations⁸⁰. This might be one of the mechanisms by which persistent inflammation can increase the risk of cancer⁸¹.

Tumour-cell plasticity

One manifestation of the distinct tumour context is that cells from a given malignant tissue are not limited to that tissue's normal panoply of physiological processes. The classic work of Beatrice Mintz (discussed below) is a prime example of this, but a more recent example can be found in 'vasculogenic mimicry', a process in which aggressive tumours can augment normal angiogenesis by forming hollow channels that connect to the existing vascular system. These vessels are believed to transport blood into the depths of the tumour^{82,83}. This concept has now been well-characterized⁸⁴⁻⁸⁷ and could represent a general component of tumour development⁸⁸. To produce more selective antiangiogenic therapies, it might be necessary to combine detailed examinations of vasculogenic mimicry with existing models of tumour angiogenesis.

Haematological tumours

More than 80% of human cancers are derived from the epithelium, but the role of context in the development and maintenance of cancer also seems to apply to tumours of haematological origin. Although most immune cells spend much of their lifespan in the circulatory system, key aspects of immune-cell development involve cell-cell and cell-ECM interactions within the stroma of the bone marrow, the thymus and the lymph nodes^{89,90}. In haematopoietic cells, as in epithelial cells, these interactions control cell shape, adhesion and migration⁹¹.

Accordingly, defects in the function of bone-marrow stromal cells can cause a predisposition to cancer, such as in cases of Shwachman-Diamond syndrome, an inherited preleukaemic disorder that is caused by a faulty bone-marrow microenvironment⁹². As with tumours that are derived from the epithelium, haematological tumour cells interact with their stromal microenvironment through cell-surface receptors⁹³⁻⁹⁵. These interactions lead to increased production of MMPs^{96,97}, altered expression of ECM receptors^{98,99} and increased angiogenesis^{100,101}. The interactions between haematological tumour cells and the tumour stroma are, therefore, a significant component of tumour growth and resistance to anticancer therapeutics¹⁰²⁻¹⁰⁶.

Restoring the normal context

Although an abnormal context can contribute to tumorigenesis and tumour progression, there is no compelling evidence that this process, once initiated, is irreversible. The possibility that reintroduction of the normal context could suppress the transformed phenotype was first suggested by the work of Mintz and Illmensee, who showed that TERATOCARCINOMA CELLS, even after prolonged passage, were still capable of differentiating and generating normal mice¹⁰⁷. This seminal observation indicated that maintenance of a normal context could lead to inhibition or even reversion of tumours *in situ*. In another example, Rous sarcoma virus — one of the most potent oncogenic viruses — is not tumorigenic in the early embryo¹⁰⁸, but when the embryonic cells that host the virus cells are put in culture, they become transformed¹⁰⁹. In co-culture assays, normal stromal cells inhibit the progression to epithelial malignancy¹¹⁰. Norbert Fusenig and colleagues have developed an assay to model the natural tissue context of the stratified skin epithelium¹¹¹. Using this system, they were able to suppress early stages of neoplastic progression of malignant keratinocytes by introducing an excess of normal keratinocytes¹¹².

An assay involving a three-dimensional (3D) basement membrane¹¹³ has been used to investigate the response of a series of human breast-tumour cell lines at different stages of progression, cultured within a physiological context¹¹⁴. Although the nonmalignant cells are similar in appearance to the malignant cells when cultured on plastic substrata, the phenotypic differences are striking when the cells are cultured in a reconstituted basement membrane (rBM)¹¹⁵. Under these conditions, the non-malignant cells undergo growth arrest and form a polarized, alveolar structure, whereas the malignant cells proliferate and form amorphous structures. Analysis of ECM and growth-factor receptors in the non-malignant and malignant cell types indicates that the malignant cells overexpress INTEGRINS and epidermal growth factor receptor (EGFR). Addition of anti-β1-integrin antibodies to the malignant cells, when cultured in 3D rBM, downregulated EGFR expression, restored cellular organization, and decreased overall tumorigenicity¹¹⁵. This observation led to the discovery of a bidirectional cross-modulation of integrin and EGFR signalling that exists only when cells are cultured in 3D¹¹⁶. Furthermore, the tumorigenic phenotype of the malignant cells was reversed by treatment with EGFR-inhibitory antibodies, mitogen-activated protein kinase (MAPK) pathway inhibitors, or phosphatidylinositol 3-kinase (PI3K) pathway inhibitors^{116,117}. Inhibiting several different signaling pathways restores even an aggressive breast-cancer cell line to a normal phenotype¹¹⁷.

Therefore, assays in which tumour cells are cultured in physiological conditions can be used to identify combinations of signalling inhibitors with the potential to reverse the progression of a broad range of tumours. The success of agents that are designed to inhibit other signal transduction pathways, such as herceptin (which blocks signalling by the EGFR ERBB2 (HER2) in breast cancer cells) and STI-571 (which inhibits BCR–ABL kinase activity in chronic myelogenous leukaemia cells) indicates that this might be a valid approach^{118,119}. It is clear, however, that relapses occur and many patients do not respond. These agents were designed to target one particular oncoprotein, so it might be necessary — in cases of more complex cancers — to target both the tumour and its context, using combinations of drugs.

Targeting the tumour organ

The efficacy of targeting the tumour organ can be found in recent strategies for treating hepatocellular carcinoma. This cancer type is accompanied by a fibrotic stromal reaction in which HEPATIC STELLATE CELLS show increased proliferation, fibrogenesis and matrix degradation, as well as reduced retinoid production and cytokine release¹²⁰ — physiological responses often found in tumour tissues. Recent clinical studies indicate that chemotherapy for hepatocarcinoma could be more effective if therapies to target the underlying liver fibrosis were also employed^{120,121}. As fibrotic breast disease is also associated with a predisposition to breast cancer¹²², and environmentally induced fibrotic disorders of the lung can increase incidence of lung cancer¹²³, targeting the tumour environment might also increase the treatment effectiveness for these types of cancer.

Antagonism of the developing tumour context also offers potential for cancer prevention therapies^{124,125}. In the best-characterized example of this approach so far, chronic suppression of inflammation through use of non-steroidal anti-inflammatory drugs (NSAIDs) has been shown to lower the incidence of colon and breast cancer^{125,126}. This antitumour activity seems to occur through inhibition of cyclooxygenase-2 (COX2)^{127–129}, an enzyme that is involved in the

synthesis of pro-inflammatory prostaglandins (see the review by Rajnish Gupta and Raymond DuBois on pp. 11–21 in this issue). The demonstration of the role of COX2 in tumorigenesis serves as a remarkable example of how the several tissue types can collaborate to promote tumour progression, as fibroblasts, immune system cells and cells involved in neoangiogenesis are all part of this pathway¹³⁰.

The requirement of tumours for a vascular supply has also produced a diverse group of angiogenesis inhibitors that are currently undergoing evaluation in the clinic¹³¹. Similarly, the role of MMPs in tumorigenesis, tumour invasion and metastasis has prompted clinical testing of MMP inhibitors. Although the results with patients suffering from advanced stages of cancer have shown no clinical efficacy, recent data indicate that MMP inhibitors could be more successful when used in early-stage cancer or in conjunction with traditional treatment methods^{132,133}.

So, agents that target the tumour microenvironment represent an important new direction for cancer therapy. Just as the normal context creates a dynamic equilibrium to maintain normal tissue function, so the tumour context contains many overlapping mechanisms to maintain its functional disorder and to evade anticancer therapies. Therefore, it is likely that combinations of the next-generation therapeutic agents, targeting specific molecular targets, will be required not only to inhibit and destroy the tumour cells, but also to normalize the tumour microenvironment. Gaining a better understanding of the complexities of the tumour context will improve our prospects for developing effective cancer treatments. Dormant metastases are not the only sheep in wolves' clothing — the altered microenvironment of the tumour is itself a powerful and insidious carcinogen that needs to be targeted.

Keywords

ORGAN

An anatomically discrete collection of tissues, integrated to perform specific functions.

TISSUE

A relatively homogenous structure, composed of an organized collection of cells of similar morphology and function.

EXTRACELLULAR MATRIX (ECM).

A complex, threedimensional network of very large macromolecules that provides contextual information and an architectural scaffold for cellular adhesion and migration.

STROMA

Organ compartment serving as the connective tissue framework; includes fibroblasts, immune defence cells and fat cells.

EPITHELIUM

A diverse group of tissues that covers or lines nearly all body surfaces, cavities and tubes, functioning as interfaces between different biological compartments. Epithelial layers provide physical protection and containment, and also mediate organ-specific transport properties.

BASEMENT MEMBRANE

A specialized form of ECM that consists of laminins, collagen IV, nidogen (entactin), proteoglycans and a number of other glycoproteins that separates epithelia from underlying supporting tissues. Different organs have different compositions of basement membrane.

ADHERENS JUNCTION

A physical junction that links apicolaterally localized belts of actin in adjacent epithelial cells.

GAP JUNCTION

An aqueous channel that interconnects the cytoplasms of adjacent cells and allows direct exchange of small cytoplasmic components. It is created by the association of two hemichannels, each a hexamer of connexin subunits.

TIGHT JUNCTION

A component of cell–cell adhesion in epithelial and endothelial cell sheets. Acts as a mediator of the diffusion of solutes through the intercellular space. Also acts as a boundary between the apical and basal plasma-membrane domains.

DESMOSOME

An adhesive junction that anchors intermediate filaments between adjoining cells.

E-CADHERIN

The main adhesion receptor in adherens junctions. Mediates Ca^{2+} -dependent interactions between adjacent epithelial cells and regulates cell proliferation. It also sequesters the transcriptional co-activator β -catenin, a protein that can stimulate cell-cycle entry. The loss of E-cadherin from the cell surface might trigger epithelial–mesenchymal transition.

EPITHELIAL–MESENCHYMAL TRANSITION

Conversion from an epithelial to a mesenchymal phenotype, which is a normal component of embryonic development. In carcinomas, this transformation results in altered cell morphology, the expression of mesenchymal proteins and increased invasiveness.

CONNEXIN

Functions as a subunit of the gap junction hemichannel. Several members of the connexin family have been identified.

INTERSTITIAL MATRIX

The extracellular matrix (ECM) contained within the stroma.

INTERMEDIATE FILAMENT

A component of the eukaryotic cytoskeleton. Intermediate filaments form a dense network extending from the nucleus to the plasma membrane.

TERATOCARCINOMA

A malignant germ-cell tumour arising from the ovary or testis that is composed of embryonal carcinoma cells.

INTEGRINS

A family of more than 20 heterodimeric cell-surface extracellular matrix (ECM) receptors. They connect the structure of the ECM with the cytoskeleton and can transmit signalling information bidirectionally.

HEPATIC STELLATE CELLS

The principal fibrogenic cell type of the liver. They are located in a perivascular orientation and contain long cytoplasmic processes that interact with neighbouring cells.

HEMIDESMOSOME

An adhesion complex located at the interface of epithelial cells with the basement membranes. Responsible for linking keratin intermediate filaments to components of the extracellular matrix.

Acknowledgments

The research performed in the laboratory of M.J.B. and summarized in this review was supported by the United States Department of Energy (DOE), the Office of Biological and Environmental Research, and by the NCI. D.R. was supported by a Distinguished Hollaender Postdoctoral Fellowship from the DOE.

References

1. Roskelley, C. D., Srebrow, A. & Bissell, M. J. A hierarchy of ECM-mediated signalling regulates tissue-specific gene expression. *Curr. Opin. Cell Biol.* **7**, 736–747 (1995).
2. Schwartz, M. A. & Baron, V. Interactions between mitogenic stimuli, or, a thousand and one connections. *Curr. Opin. Cell Biol.* **11**, 197–202 (1999).
3. Giancotti, F. G. & Ruoslahti, E. Integrin signaling. *Science* **285**, 1028–1032 (1999).
4. Radisky, D., Muschler, J. & Bissell, M. J. Order and disorder: the role of extracellular matrix in epithelial cancer. *Cancer Invest.* (in the press).
5. Kumar, N. M. and Gilula, N. B. The gap junction communication channel. *Cell* **84**, 381–388 (1996).
6. Green, K. J. & Gaudry, C. A. Are desmosomes more than tethers for intermediate filaments? *Nature Rev. Mol. Cell. Biol.* **1**, 208–216 (2000).
7. Tsukita, S., Furuse, M. and Itoh, M. Multifunctional strands in tight junctions. *Nature Rev. Mol. Cell. Biol.* **2**, 285–293 (2001).
8. Runswick, S. K., O'Hare, M. J., Jones, L., Streuli, C. H. & Garrod, D. R. Desmosomal adhesion regulates epithelial morphogenesis and cell positioning. *Nature Cell Biol.* **3**, 823–830 (2001).
9. Christofori, G. & Semb, H. The role of the cell-adhesion molecule E-cadherin as a tumour-suppressor gene. *Trends Biochem. Sci.* **24**, 73–76 (1999).
10. Raghavan, S., Bauer, C., Mundschau, G., Li, Q. & Fuchs, E. Conditional ablation of $\beta 1$ integrin in skin. Severe defects in epidermal proliferation, basement membrane formation, and hair follicle invagination. *J. Cell Biol.* **150**, 1149–1160 (2000).
11. Lochter, A. *et al.* Matrix metalloproteinase stromelysin-1 triggers a cascade of molecular alterations that leads to stable epithelial-to-mesenchymal conversion and a premalignant phenotype in mammary epithelial cells. *J. Cell Biol.* **139**, 1861–1872 (1997).
12. Hordijk, P. L. *et al.* Inhibition of invasion of epithelial cells by Tiam1-Rac signaling. *Science* **278**, 1464–1466 (1997).
13. Perl, A. K., Wilgenbus, P., Dahl, U., Semb, H. & Christofori, G. A causal role for E-cadherin in the transition from adenoma to carcinoma. *Nature* **392**, 190–193 (1998). **Using E-cadherin knockout mice and dominantnegative forms of this protein, the authors show that loss of E-cadherin is associated with pancreatic β -cell carcinogenesis.**
14. Hazan, R. B., Phillips, G. R., Qiao, R. F., Norton, L. & Aaronson, S. A. Exogenous expression of N-cadherin in breast cancer cells induces cell migration, invasion, and metastasis. *J. Cell Biol.* **148**, 779–790 (2000).
15. Auersperg, N. *et al.* E-cadherin induces mesenchymalto-epithelial transition in human ovarian surface epithelium. *Proc. Natl Acad. Sci. USA* **96**, 6249–6254 (1999).
16. Nicholson, B. J., Weber, P. A., Chang, H.-C., Lampe, P. & Goldberg, G. The molecular basis of selective permeability of connexins is complex and includes both size and charge. *Br. J. Med. Biol. Res.* **33**, 369–378 (2000).
17. Hanna, E. A. *et al.* Gap junctional intercellular communication and connexin43 expression in human ovarian surface epithelial cells and ovarian carcinomas *in vivo* and *in vitro*. *Carcinogenesis* **20**, 1369–1373 (1999).
18. Locke, D. Gap junctions in normal and neoplastic mammary gland. *J. Pathol.* **186**, 343–349 (1999).

19. Saunders, M. M. *et al.* Breast cancer metastatic potential correlates with a breakdown in homospecific and heterospecific gap junctional intercellular communication. *Cancer Res.* **61**, 1765–1767 (2001).
20. Temme, A. *et al.* High incidence of spontaneous and chemically induced liver tumors in mice deficient for connexin 32. *Curr. Biol.* **7**, 713–716 (1995).
21. Moennikes, O., Buchmann, A., Willecke, K., Traub, O. & Schwarz, M. Hepatocarcinogenesis in female mice with mosaic expression of connexin32. *Hepatology* **32**, 501–506 (2000).
22. Zhang, Z. Q. *et al.* Suppression of tumorigenicity of human lung carcinoma cells after transfection with connexin43. *Carcinogenesis* **19**, 1889–1894 (1998).
23. King, T. J. *et al.* Reduced levels of connexin43 in cervical dysplasia: inducible expression in a cervical carcinoma cell line decreases neoplastic potential with implications for tumor progression. *Carcinogenesis* **21**, 1097–1109 (2000).
24. Krutovskikh, V. A. *et al.* Differential effect of subcellular communication impairing gap junction protein connexin43 on tumor cell grown *in vivo*. *Oncogene* **19**, 505–513 (2000).
25. Mesnil, M. *et al.* Negative growth control of HeLa cells by connexin genes: connexin species specificity. *Cancer Res.* **55**, 629–639 (1995).
26. Ito, A. *et al.* A role for heterologous gap junctions between melanoma and endothelial cells in metastasis. *J. Clin. Invest.* **105**, 1189–1197 (2000).
27. Ronnov-Jessen, L., Petersen, O. W. & Bissell, M. J. Cellular changes involved in conversion of normal to malignant breast: importance of the stromal reaction. *Physiol. Rev.* **76**, 69–125 (1996).
28. Sager, R. Expression genetics in cancer: shifting the focus from DNA to RNA. *Proc. Natl Acad. Sci. USA* **94**, 952–955 (1997).
29. Sternlicht, M. D., Kedeshian, P., Shoa, Z. M., Safarians, S. & Barsky, S. H. The human myoepithelial cell is a natural tumor suppressor. *Clin. Cancer Res.* **3**, 1949–1958 (1997).
30. Stoler, D. L. *et al.* The onset and extent of genomic instability in sporadic colorectal tumor progression. *Proc. Natl Acad. Sci. USA* **96**, 15121–15126 (1999).
31. Frame, S. & Balmain, A. Integration of positive and negative growth signals during Ras pathway activation *in vivo*. *Curr. Opin. Genet. Dev.* **10**, 106–113 (2000).
32. Deng, G., Lu, Y., Zlotnikov, G., Thor, A. D. & Smith, H. S. Loss of heterozygosity in normal tissue adjacent to breast carcinomas. *Science* **274**, 2057–2059 (1996).
33. Washington, C., Dalbègue, F., Abreo, F., Taubenberger, J. K. & Lichy, J. H. Loss of heterozygosity in fibrocystic change of the breast. *Am. J. Pathol.* **157**, 323–329 (2000).
34. Bissell, M. J. *et al.* Tissue structure, nuclear organization, and gene expression in normal and malignant breast. *Cancer Res.* **59**, 1757–1763 (1999).
35. Sieweke, M. H. & Bissell, M. J. The tumor-promoting effect of wounding: a possible role for TGF- β -induced stromal alterations. *Crit. Rev. Oncog.* **5**, 297–311 (1994).
36. Dolberg, D. S., Hollingsworth, R., Hertle, M. & Bissell, M. J. Wounding and its role in RSV-mediated tumor formation. *Science* **230**, 676–678 (1985).
37. Sieweke, M. H., Thompson, N. L., Sporn, M. B. & Bissell, M. J. Mediation of wound-related Rous sarcoma virus tumorigenesis by TGF- β . *Science* **248**, 1656–1660 (1990).
38. Mintz, B. & Silvers, W. K. Transgenic mouse model of malignant skin melanoma. *Proc. Natl Acad. Sci. USA* **90**, 8817–8821 (1993).
39. Barcellos-Hoff, M. H. & Ravani, S. A. Irradiated mammary gland stroma promotes the expression of tumorigenic potential by unirradiated epithelial cells. *Cancer Res.* **60**, 1254–1260

(2000). **Radiation-induced mutation of the stromal microenvironment can contribute to neoplastic progression of epithelial cells *in vivo*, indicating that disruption of solid tissue interactions is a method by which ionizing radiation acts as a carcinogen.**

40. Ehrhart, E. J., Segarini, P., Tsang, M. L., Carroll, A. G. & Barcellos-Hoff, M. H. Latent transforming growth factor β 1 activation *in situ*: quantitative and functional evidence after low-dose γ -irradiation. *FASEB J.* **11**, 991–1002 (1997).

41. Moinfar, F. *et al.* Concurrent and independent genetic alterations in the stromal and epithelial cells of mammary carcinoma: implications for tumorigenesis. *Cancer Res.* **60**, 2562–2566 (2000). **An examination of loss of heterozygosity (LOH) in microdissected mammary stromal and epithelial tissue samples. LOH at several loci was observed exclusively in stromal cells, indicating that genetic instability in the stroma can be a contributing factor to tumour progression.**

42. Jacoby, R. F. *et al.* A juvenile polyposis tumor suppressor locus at 10p11 is deleted from nonepithelial cells in the lamina propria. *Gastroenterology* **112**, 1398–1403 (1997).

43. Howe, J. R. *et al.* Mutations in the *SMAD4/DPC4* gene in juvenile polyposis. *Science* **280**, 1086–1088 (1998). **Alterations in stromal function predispose colonic epithelial cells to carcinoma.**

44. Thomasset, N. *et al.* Expression of autoactivated stromelysin-1 in mammary glands of transgenic mice leads to a reactive stroma during early development. *Am. J. Pathol.* **153**, 457–467 (1998).

45. Ilstyt, T. D. Stromal cells can contribute oncogenic signals. *Semin. Cancer Biol.* **11**, 97–104 (2001).

46. Vu, T. H. & Werb, Z. Matrix metalloproteinases: effectors of development and normal physiology. *Genes Dev.* **14**, 2123–2133 (2000).

47. Sethi, T. *et al.* Extracellular matrix proteins protect small cell lung cancer cells against apoptosis: a mechanism for small cell lung cancer growth and drug resistance *in vivo*. *Nature Med.* **5**, 662–668 (1999).

48. Mitsiades, N., Yu, W., Poulaki, V., Tsokos, M. & Stamenkovic, I. Matrix metalloproteinase-7-mediated cleavage of Fas ligand protects tumor cells from chemotherapeutic drug cytotoxicity. *Cancer Res.* **61**, 577–581 (2001).

49. Yu, Q. & Stamenkovic, I. Cell surface-localized matrix metalloproteinase-9 proteolytically activates TGF- β and promotes tumor invasion and angiogenesis. *Genes Dev.* **14**, 163–176 (2000).

50. Sternlicht, M. D. *et al.* The stromal proteinase MMP3/stromelysin-1 promotes mammary carcinogenesis. *Cell* **98**, 137–146 (1999). **Shows that sustained expression of stromelysin-1, a stromal enzyme that destroys the basement membrane, can lead to epithelial tumorigenesis.**

51. Wright, J. *et al.* A switch from stromal to tumor cell expression of stromelysin-1 mRNA is associated with the conversion of squamous to spindle cell carcinomas during mouse skin tumor progression. *Mol. Carcinogen.* **10**, 207–215 (1994).

52. Boudreau, N., Sympton, C. J., Werb, Z. & Bissell, M. J. Suppression of ICE and apoptosis in mammary epithelial cells by extracellular matrix. *Science* **267**, 891–893 (1995).

53. Sympton, C. J. *et al.* Targeted expression of stromelysin-1 in mammary gland provides evidence for proteinases in branching morphogenesis and the requirement for an intact basement membrane for tissue-specific gene expression. *J. Cell Biol.* **125**, 681–693 (1994).

54. Witty, J. P., Wright, J. H. & Matrisian, L. M. Matrix metalloproteinases are expressed during ductal and alveolar mammary morphogenesis, and misregulation of stromelysin-1 in transgenic mice induces unscheduled alveolar development. *Mol. Biol. Cell.* **6**, 1287–1303 (1995).
55. Rudolph-Owen, L. A., Chan, R., Muller, W. J. & Matrisian, L. M. The matrix metalloproteinase matrilysin influences earlystage mammary tumorigenesis. *Cancer Res.* **58**, 5500–5506 (1998).
56. Boulay, A. *et al.* High cancer cell death in syngeneic tumors developed in host mice deficient for the stromelysin-3 matrix metalloproteinase. *Cancer Res.* **61**, 2189–2193 (2001).
57. Ha, H.-Y. *et al.* Overexpression of membrane-type matrix metalloproteinase-1 induces mammary gland abnormalities and adenocarcinoma in transgenic mice. *Cancer Res.* **61**, 984–990 (2001).
58. Kaplan, D. H. *et al.* Demonstration of an interferon- γ -dependent tumor surveillance system in immunocompromised mice. *Proc. Natl Acad. Sci. USA* **95**, 7556–7561 (1998).
59. Nakajima, C. *et al.* A role of interferon- γ (IFN- γ) in tumor immunity: T cells with the capacity to reject tumor cells are generated but fail to migrate to tumor sites in IFN- γ -deficient mice. *Cancer Res.* **61**, 3399–3405 (2001).
60. Shankaran, V. *et al.* IFN γ and lymphocytes prevent primary tumour development and shape tumour immunogenicity. *Nature* **410**, 1107–1111 (2001).
61. Beatty, G. L. & Paterson, Y. IFN- γ -dependent inhibition of tumor angiogenesis by tumor angiogenesis of tumorinfiltrating CD4+ T cells requires tumor responsiveness to IFN- γ . *J. Immunol.* **166**, 2276–2282 (2001).
62. Hanson, H. L. *et al.* Eradication of established tumors by CD8+ T cell adoptive immunotherapy. *Immunity* **13**, 265–276 (2000).
63. Griffith, T. S. *et al.* Monocyte-mediated tumoricidal activity via the tumor necrosis factor-related cytokine, TRAIL. *J. Exp. Med.* **189**, 1343–1353 (1999).
64. Smyth, M. J. *et al.* Tumor necrosis factor-related apoptosis-inducing ligand (TRAIL) contributes to interferon- γ -dependent natural killer cell protection from tumor metastasis. *J. Exp. Med.* **193**, 661–670 (2001).
65. Maria, D. A. *et al.* Resistance to melanoma metastases in mice selected for high acute inflammatory response. *Carcinogenesis* **22**, 337–342 (2001).
66. Beatty, G. L. & Paterson, Y. IFN- γ can promote tumor evasion of the immune system *in vivo* by down-regulating cellular levels of an endogenous tumor antigen. *J. Immunol.* **165**, 5502–5508 (2000).
67. Gati, A. *et al.* Tumor cells regulate the lytic activity of tumor-specific cytotoxic T lymphocytes by modulating the inhibitory natural killer receptor function. *Cancer Res.* **61**, 3240–3244 (2001).
68. Ganss, R. and Hanahan, D. Tumor microenvironment can restrict the effectiveness of activated antitumor lymphocytes. *Cancer Res.* **58**, 4673–4681 (1998).
69. Wei, W. Z., Fulton, A., Winkelhake, J. and Heppner, G. Correlation of natural killer activity with tumorigenesis of a preneoplastic mouse mammary lesion. *Cancer Res.* **49**, 2709–2715 (1989).
70. Coussens, L. M. *et al.* Inflammatory mast cells upregulate angiogenesis during squamous epithelial carcinogenesis. *Genes Dev.* **13**, 1382–1397 (1999).
71. Coussens, L. M., Tinkle, C. L., Hanahan, D. & Werb, Z. MMP-9 supplied by bone marrow-derived cells contributes to skin carcinogenesis. *Cell* **103**, 481–490 (2000). **References 70 and**

71 showed that mast cells secrete MMP-9 following infiltration of developing squamous epithelial tumours, and that this action stimulates both development of malignancy and subsequent angiogenesis.

72. Bergers, B. *et al.* Matrix metalloproteinase-9 triggers the angiogenic switch during carcinogenesis. *Nature Cell Biol.* **2**, 737–744 (2000).

73. Lin, E. Y., Nguyen, A. V., Russell, R. G. & Pollard, J. W. Colony-stimulating factor 1 promotes progression of mammary tumors to malignancy. *J. Exp. Med.* **193**, 727–739 (2001).

Showed that macrophages potentiate neoplastic progression through paracrine factors, indicating that these factors are important to tumorigenesis as genetic mutations.

74. Fang, K. C. *et al.* Mast cell expression of gelatinases A and B is regulated by *kit* ligand and TGF- β . *J. Immunol.* **162**, 5528–5535 (1999).

75. Coussens, L. M., & Werb, Z. Inflammatory cells and cancer: think different! *J. Exp. Med.* **193**, F23–F26 (2001).

76. Frank, B. T., Rossall, J. C., Caughey, G. H. & Fang, K. C. Mast cell tissue inhibitor of metalloproteinase-1 is cleaved and inactivated extracellularly by α -chymase. *J. Immunol.* **166**, 2783–2792 (2001).

77. Mitchell, R. A. & Bucala, R. Tumor growth-promoting properties of macrophage migration inhibitory factor (MIF). *Semin. Cancer Biol.* **10**, 359–366 (2000).

78. Abe, R., Peng, T., Sailors, J., Bucala, R. & Metz, C. N. Regulation of the CTL response by macrophage migration inhibitory factor. *J. Immunol.* **166**, 747–753 (2001).

79. Hudson, J. D. *et al.* A proinflammatory cytokine inhibits p53 tumor suppressor activity. *J. Exp. Med.* **190**, 1375–1382 (1999). **Macrophage inhibitory factor (MIF) suppress p53-dependent transcriptional activity and blocks senescence of primary mouse embryonic fibroblasts.**

80. Shao, C. *et al.* Chromosome instability contributes to loss of heterozygosity in mice lacking p53. *Proc. Natl Acad. Sci. USA* **97**, 7405–7410 (2000).

81. Cordon-Cardo, C. & Prives, C. At the crossroads of inflammation and tumorigenesis. *J. Exp. Med.* **190**, 1367–1370 (1999).

82. Maniotis, A. J. *et al.* Vascular channel formation by human melanoma cells *in vivo* and *in vitro*: vasculogenic mimicry. *Am. J. Pathol.* **155**, 739–752 (1999). **Microscopic sectioning of uveal (ocular) tumours provided the first evidence that, in addition to directing the behaviour of stromal endothelium, tumours might also develop into functional channels capable of connecting to host vasculature.**

83. Bissell, M. J. Tumor plasticity allows vasculogenic mimicry, a novel form of angiogenic switch. *Am. J. Pathol.* **155**, 675–679 (1999).

84. Chang, Y. S. *et al.* Mosaic blood vessels in tumors: frequency of cancer cells in contact with flowing blood. *Proc. Natl Acad. Sci. USA* **97**, 14608–14613 (2000).

85. Shirikawa, K. *et al.* Absence of endothelial cells, central necrosis, and fibrosis are associated with aggressive inflammatory breast cancer. *Cancer Res.* **61**, 445–451 (2001).

86. Sood, A. K. *et al.* Molecular determinants of ovarian cancer plasticity. *Am. J. Pathol.* **158**, 1279–1288 (2001).

87. Hendrix, M. J. C. *et al.* Expression and functional significance of VE-cadherin in aggressive human melanoma cells: role in vasculogenic mimicry. *Proc. Natl Acad. Sci. USA* **98**, 8018–8023 (2001).

88. Forberg, R., Hendrix, M. J. C. & Maniotis, A. J. Vasculogenic mimicry and tumor angiogenesis. *Am. J. Pathol.* **156**, 361–381 (2000).

89. Akashi, K., Reya, T., Dalma-Weiszhausz, D. & Weissman, I. L. Lymphoid precursors. *Curr. Opin. Immunol.* **12**, 144–150 (2000).
90. Khan, A. A., Bose, C., Yam, L. S., Soloski, M. J. & Rupp, F. Physiological regulation of the immunological synapse by agrin. *Science* **292**, 1681–1686 (2001).
91. Yang, F.-C. *et al.* Rac and Cdc42 GTPases control hematopoietic stem cell shape, adhesion, migration, and mobilization. *Proc. Natl Acad. Sci. USA* **98**, 5614–5618 (2001).
92. Dror, Y. & Freedman, M. H. Schwachman–Diamond syndrome: an inherited preleukemic bone marrow failure disorder with aberrant hematopoietic progenitors and faulty marrow microenvironment. *Blood* **94**, 3048–3054 (1999).
93. Damiano, J. S., Cress, A. E., Hazelhurst, L. A., Shtil, A. A. & Dalton, W. S. Cell adhesion mediated drug resistance (CAM-DR): role of integrins and resistance to apoptosis in human myeloma cell lines. *Blood* **93**, 1658–1667 (1999).
94. Aziz, K. A., Till, K. J., Zuzel, M. & Cawley, J. C. Involvement of CD44–hyaluronan interaction in malignant cell homing and fibronectin synthesis in hairy cell leukemia. *Blood* **96**, 3161–3167 (2000).
95. Børset, M., Hjertner, Ø., Yaccoby, S., Epstein, J. & Sanderson, R. D. Syndecan-1 is targeted to the uropods of polarized myeloma cells where it promotes adhesion and sequesters heparin-binding proteins. *Blood* **96**, 2528–2536 (2000).
96. Barillé, S. *et al.* Metalloproteinases in multiple myeloma: production of matrix metalloproteinase-9 (MMP-9), activation of pro-MMP-2, and induction of MMP-1 by myeloma cells. *Blood* **90**, 1649–1655 (1997).
97. Kossakowska, A. E. *et al.* Interleukin-6 regulation of matrix-metalloproteinase (MMP-2 and MMP-9) and tissue inhibitor of metalloproteinase (TIMP-1) expression in malignant non-Hodgkin's lymphomas. *Blood* **94**, 2080–2089 (1999).
98. Michigami, T. *et al.* Cell–cell contact between marrow stromal cells and myeloma cells via VCAM-1 and $\alpha 4\beta 1$ -integrin enhances production of osteoclast-stimulating activity. *Blood* **96**, 1953–1960 (2000).
99. Sanz-Rodríguez, F., Hidalgo, A. & Teixidó, J. Chemokine stromal cell-derived factor-1 α modulates VLA-4 integrin-mediated multiple myeloma cell adhesion to CS-1/fibronectin and VCAM-1. *Blood* **97**, 346–351 (2001).
100. Vacca, A. *et al.* Bone marrow neovascularization, plasma cell angiogenic potential, and matrix metalloproteinase-2 secretion parallel progression of human multiple myeloma. *Blood* **93**, 3064–3073 (1999).
101. Padró, T. *et al.* Increased angiogenesis in the bone marrow of patients with acute myeloid leukemia. *Blood* **95**, 2637–2644 (2000).
102. Lagneaux, L., Delforge, A., Bron, D., De Bruyn, C. & Styckmans, P. Chronic lymphocytic leukemic B cells but not normal B cells are rescued from apoptosis by contact with normal bone marrow stromal cells. *Blood* **91**, 2387–2396 (1998).
103. Shain, K. H., Landowski, T. H. & Dalton, W. S. The tumor microenvironment as a determinant of cancer cell survival: a possible mechanism for *de novo* drug resistance. *Curr. Opin. Oncol.* **12**, 557–563 (2000).
104. Mudry, R. E., Fortney, J. E., York, T., Hall, B. M. & Gibson, L. F. Stromal cells regulate survival of B-lineage leukemic cells during chemotherapy. *Blood* **96**, 1926–1932 (2000).
105. Cheung, W.-C. & Van Ness, B. The bone marrow stromal microenvironment influences myeloma therapeutic response *in vitro*. *Leukemia* **15**, 264–271 (2001).

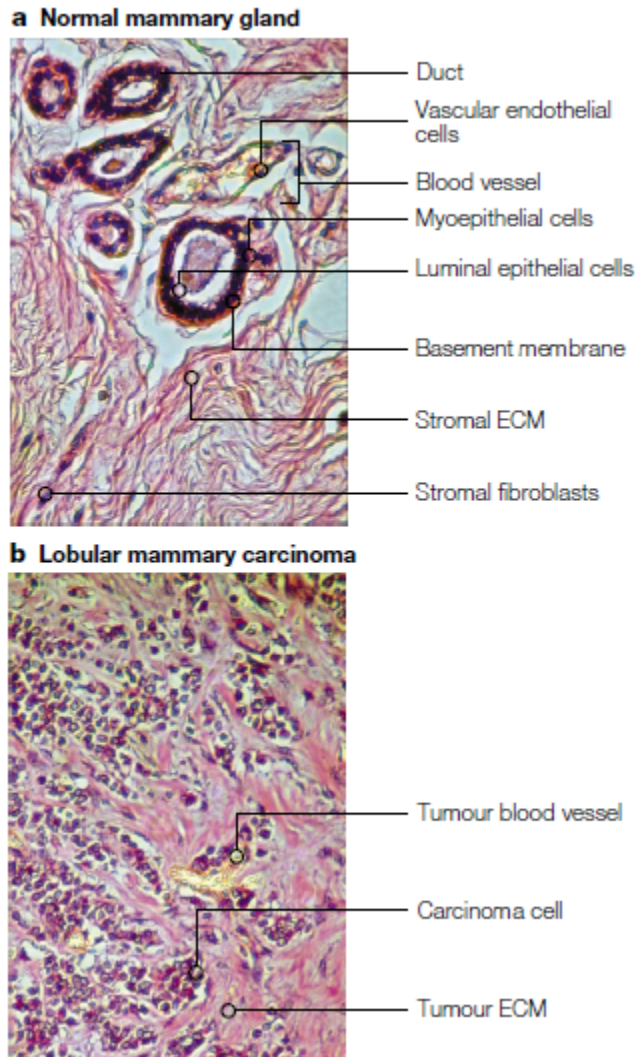
106. Moreno, A. *et al.* Interleukin-6 dimers produced by endothelial cells inhibit apoptosis of B-chronic lymphocytic leukemia cells. *Blood* **97**, 242–249 (2001).
107. Illmensee, K. & Mintz, B. Totipotency and normal differentiation of single teratocarcinoma cells cloned by injection into blastocysts. *Proc. Natl Acad. Sci. USA* **73**, 549–553 (1976).
- Malignant mouse teratocarcinoma cells, grown through 200 transplant generations over 8 years as *in vivo* ascites tumours, were microinjected into developing blastocysts. The resulting genetic mosaics were normal, and tumour cells were able to develop into normal tissues.**
108. Dolberg, D. S. & Bissell, M. J. Inability of Rous sarcoma virus to cause sarcomas in the avian embryo. *Nature* **309**, 552–556 (1984).
109. Stoker, A. W., Hatier, C. & Bissell, M. J. The embryonic environment strongly attenuates *v-src* oncogenesis in mesenchymal and epithelial tissues, but not in endothelia. *J. Cell Biol.* **111**, 217–228 (1990).
110. Olumi, A. F. *et al.* Carcinoma-associated fibroblasts direct tumor progression of initiated human prostatic epithelium. *Cancer Res.* **59**, 5002–5011 (1999). **A direct demonstration of the interdependence of the tumour epithelium and the tumour-associated stromal cells.**
111. Szabowski, A. *et al.* *c-Jun* and *JunB* antagonistically control cytokine-regulated mesenchymal–epidermal interaction in skin. *Cell* **103**, 745–755 (2000).
112. Javaherian, A., Vaccariello, M., Fusenig, N. E. & Garlick, J. A. Normal keratinocytes suppress early stages of neoplastic progression in stratified epithelium. *Cancer Res.* **58**, 2200–2209 (1998).
113. Barcellos-Hoff, M. H., Aggeler, J., Ram, T. G. & Bissell, M. J. Functional differentiation and alveolar morphogenesis of primary mammary cultures on reconstituted basement membrane. *Development* **105**, 223–235 (1989).
114. Petersen, O. W., Ronnov-Jessen, L., Howlett, A. R. & Bissell, M. J. Interaction with basement membrane serves to rapidly distinguish growth and differentiation pattern of normal and malignant human breast epithelial cells. *Proc. Natl Acad. Sci. USA* **89**, 9064–9068 (1992).
115. Weaver, V. M. *et al.* Reversion of the malignant phenotype of human breast cells in three-dimensional culture and *in vivo* by integrin blocking antibodies. *J. Cell Biol.* **137**, 231–245 (1997). **Showed that progression to tumorigenicity in a mammary epithelial tumour-progression cell-culture model is accompanied by upregulation of $\beta 1$ -integrins, and that $\beta 1$ -blocking antibodies can restore normal phenotype and suppress tumorigenesis.**
116. Wang, F. *et al.* Reciprocal interactions between $\beta 1$ -integrin and epidermal growth factor receptor in three-dimensional basement membrane breast cultures: a different perspective in epithelial biology. *Proc. Natl Acad. Sci. USA* **95**, 14821–14826 (1998).
117. Wang, F., Yoneda, T., Barcellos-Hoff, M. H. & Bissell, M. J. Combinatorial modifications of multiple pathways reverts the malignant phenotype of mammary carcinoma cells MDA–MB231. *Mol. Biol. Cell* **10**, 2024 (1999).
118. Slamon, D. J. *et al.* Use of chemotherapy plus a monoclonal antibody against HER2 for metastatic breast cancer that overexpresses *HER2*. *N. Engl. J. Med.* **344**, 783–792 (2001).
119. Joensuu, H. *et al.* Effect of the tyrosine kinase inhibitor STI-571 in a patient with a metastatic gastrointestinal stromal tumor. *N. Engl. J. Med.* **322**, 1052–1056 (2001).
120. Friedman, S. L., Maher, J. J. & Bissell, D. M. Mechanisms and therapy of hepatic fibrosis. *Hepatology* **32**, 1403–1408 (2000).
121. Bilimora, M. M. *et al.* Underlying liver disease, not tumor factors, predicts long-term survival after resection of hepatocellular carcinoma. *Arch. Surg.* **136**, 528–535 (2001).

122. Jacobs, T. W., Byrne, C., Colditz, G., Connolly, J. L. & Schnitt, S. J. Radial scars in benign breast-biopsy specimens and the risk of breast cancer. *N. Engl. J. Med.* **340**, 430–436 (1999).
123. Mossman, B. T. & Churg, A. Mechanisms in the pathogenesis of asbestosis and silicosis. *Am. J. Respir. Crit. Care Med.* **157**, 1666–1680 (2000).
124. Sporn, M. B. The war on cancer. *Lancet* **347**, 1377–1381 (1996).
125. Sporn, M. B. & Suh, N. Chemoprevention of cancer. *Carcinogenesis* **21**, 525–530 (2000).
126. Bange, J., Zwick, E. & Ullrich, A. Molecular targets for breast cancer therapy and prevention. *Nature Med.* **7**, 548–552 (2001).
127. Oshima, M. *et al.* Suppression of intestinal polyposis in *Apc* Δ 716 knockout mice by inhibition of prostaglandin endoperoxide synthase-2 (COX2). *Cell*, **87**, 803–809 (1996).
128. Tsujii, M. *et al.* Cyclooxygenase regulates angiogenesis induced by colon cancer cells. *Cell* **93**, 705–716 (1998).
129. Liu, C. H. *et al.* Overexpression of cyclooxygenase-2 is sufficient to induce tumorigenesis in transgenic mice. *J. Biol. Chem.* **276**, 18563–18569 (2001).
130. Williams, C. S., Tsujii, M., Reese, J., Dey, S. K. & DuBois, R. N. Host cyclooxygenase-2 modulates carcinoma growth. *J. Clin. Invest.* **105**, 1589–1594 (2000). **Showed that the induction of angiogenesis depends upon COX2 expression within tumour-associated fibroblasts, rather than within the tumour itself.**
131. Herbst, R. S., Lee, A. T., Tran, H. T. & Abbruzzese, J. L. Clinical studies of angiogenesis inhibitors: the University of Texas MD Anderson Center trial of human endostatin. *Curr. Oncol. Rep.* **3**, 131–140 (2001).
132. Zucker, S., Cao, J. & Chen, W.T. Critical appraisal of the use of matrix metalloproteinase inhibitors in cancer treatment. *Oncogene* **19**, 6642–6650 (2000).
133. Hidalgo, H. & Eckhart, S. G. Development of matrix metalloproteinase inhibitors in cancer therapy. *J. Natl Cancer Inst.* **94**, 178–193 (2001).
134. Reichmann, E. Oncogenes and epithelial cell transformation. *Semin. Cancer Biol.* **5**, 157–165 (1994).
135. Bilder, D., Li, M. & Perrimon, N. Cooperative regulation of cell polarity and growth by *Drosophila* tumor suppressors. *Science* **289**, 113–116 (2000). **A genetic screen to identify proteins that mediate epithelial polarity in *Drosophila* identified a network of two known tumour suppressors and a new gene that are involved in the assembly and maintenance of gap junctions.**
136. Bilder, D. & Perrimon, N. Localization of apical epithelial determinants by the basolateral PDZ protein Scribble. *Nature* **403**, 676–680 (2000).
137. Borg, J. P. *et al.* ERBIN: a basolateral PDZ protein that interacts with the mammalian ERBB2/HER2 receptor. *Nature Cell Biol.* **2**, 407–414 (2000).
138. Singer, A. J. and Clark, R. A. Cutaneous wound healing. *N. Engl. J. Med.* **341**, 738–746 (1999).
139. Dvorak, H. F. Tumors: wounds that do not heal. *N. Engl. J. Med.* **315**, 1650–1659 (1984).
140. Skobe, M. & Fusenig, N. E. Tumorigenic conversion of immortal human keratinocytes through stromal cell activation. *Proc. Natl Acad. Sci. USA.* **95**, 1050–1055 (1998).
141. Blobel, G. C., Schiemann, W. P. & Lodish, H. F. Role of transforming growth factor β in human disease. *N. Engl. J. Med.* **342**, 1350–1358 (2000).
142. Ronnov-Jessen, L., Petersen, O. W., Kotliansky, V. E. & Bissell, M. J. The origin of the myofibroblasts in breast cancer. Recapitulation of tumor environment in culture

- unravels diversity and implicates converted fibroblasts and recruited smooth muscle cells. *J. Clin. Invest.* **95**, 859–873 (1995).
143. Okamoto-Inoue, M., Kamada, S., Kimura, G. & Taniguchi, S. The induction of smooth muscle α -actin in a transformed rat cell line suppresses malignant properties *in vitro* and *in vivo*. *Cancer Lett.* **142**, 173–178 (1999).
144. Zajchowski, D. A. *et al.* Suppression of tumor-forming ability and related traits in MCF-7 human breast cancer cells by fusion with immortal mammary epithelial cells. *Proc. Natl Acad. Sci. USA* **87**, 2314–2318 (1990).
145. Sager, R., Anisoxicz, A., Neveu, M., Liang, P. & Sotiropoulou, G. Identification by differential display of $\alpha 6$ -integrin as a candidate tumor suppressor gene. *FASEB J.* **7**, 964–970 (1993).
146. Lee, S. W., Reimer, C. L., Oh, P., Campbell, D. B. & Schnitzer, J. E. Tumor cell growth inhibition by caveolin reexpression in human breast cancer cells. *Oncogene* **16**, 1391–1397 (1998).
147. Hirshi, K. K., Xu, C., Tsukamoto, T. & Sager, R. Gap junction genes *Cx26* and *Cx43* individually suppress the cancer phenotype of human mammary carcinoma cells and restore differentiation potential. *Cell Growth Differ.* **7**, 861–870 (1996).
148. Zou, Z. *et al.* Maspin, a serpin with tumor-suppressing activity in human mammary epithelial cells. *Science*, **263**, 526–529 (1994).
149. Bani, D., Riva, A., Bigazzi, M. & Sacchi, B. T. Differentiation of breast cancer cells *in vitro* is promoted by the concurrent influence of myoepithelial cells and relaxin. *Br. J. Cancer* **70**, 900–904 (1994).
150. Liu, Q. Y. *et al.* Inhibitory effects of activin on the growth and morphogenesis of primary and transformed mammary epithelial cells. *Cancer Res.* **56**, 1155–1163 (1996).

Figures, Boxes, and Tables

FIGURE 1



Normal versus malignant breast tumours.

a | The normal mammary gland shows a highly structured and segregated architecture. Ducts are formed by a double layer of cells: luminal epithelial cells surrounded by a layer of myoepithelial cells, enclosed by the basement membrane. Stromal fibroblasts secrete a collagenous extracellular matrix (ECM), and blood vessels are centrally located and well defined. **b** | Lobular breast carcinoma is less organized. Tumour angiogenesis produces poorly defined blood vessels, and carcinoma cells intermingle with all the stromal elements.

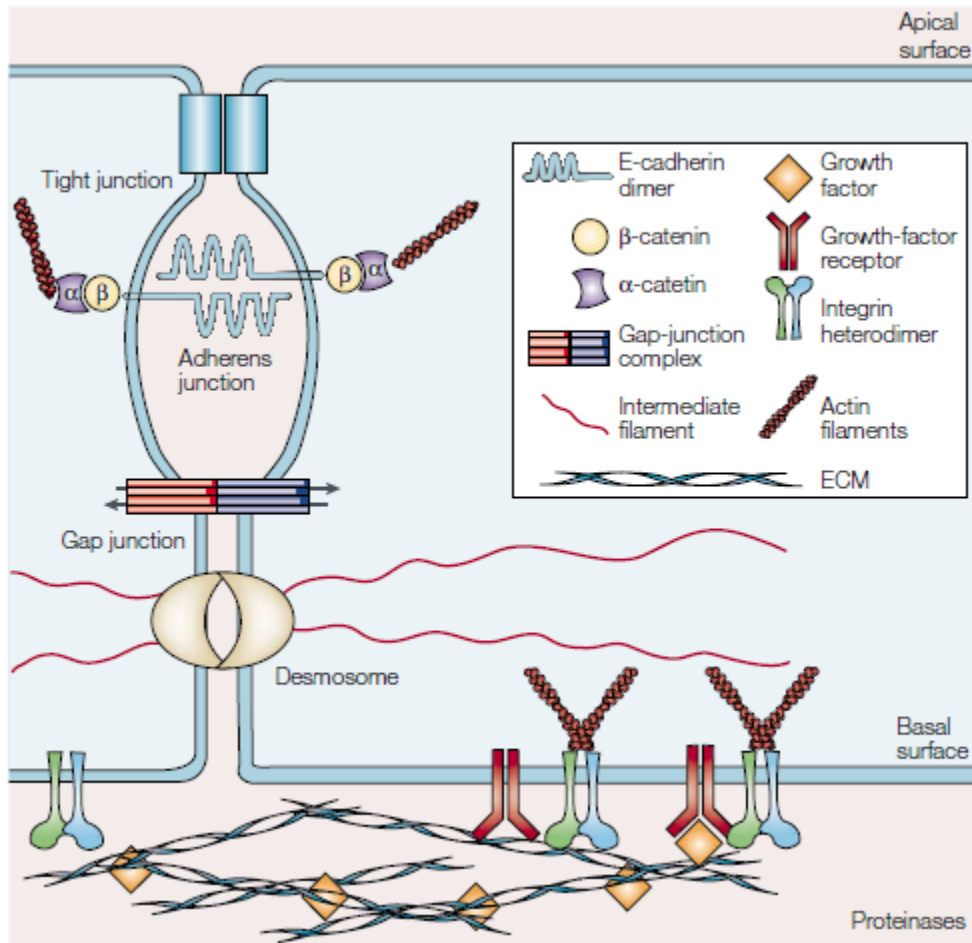
BOX 1

Box 1 | **Epithelial cell polarity and tumorigenesis in *Drosophila***

Loss of apicobasal polarity in carcinomas has often been viewed as a secondary consequence of oncogenic transformation¹³⁴, but recent investigations of *Drosophila* mutants have shown that loss of polarity determinants can directly lead to increased proliferation and development of tumours. In a genetic screen for mutations that cause aberrant epithelial structures, Bilder, Li and Perrimon¹³⁵ identified *scribble* (*Scrib*) as a gene that is required for proper localization of apical proteins and the components of the adherens junctions. Absence of *Scrib* is associated with the loss of epithelial polarity and neoplastic transformation, a phenotype previously observed in two other *Drosophila* mutants: *discs large* (*Dlg*) and *lethal giant larvae* (*Lgl*); subsequent investigations showed that all three proteins act in the same pathway¹³⁶. Although many details are not yet resolved, *Scrib* and *Dlg* seem to colocalize at the septate junction, a structure similar to the mammalian tight junction, where they direct the polarized sorting of a specific population of *Lgl*-containing vesicles. It is loss of this directional-sorting mechanism that suppresses normal growth-control mechanisms.

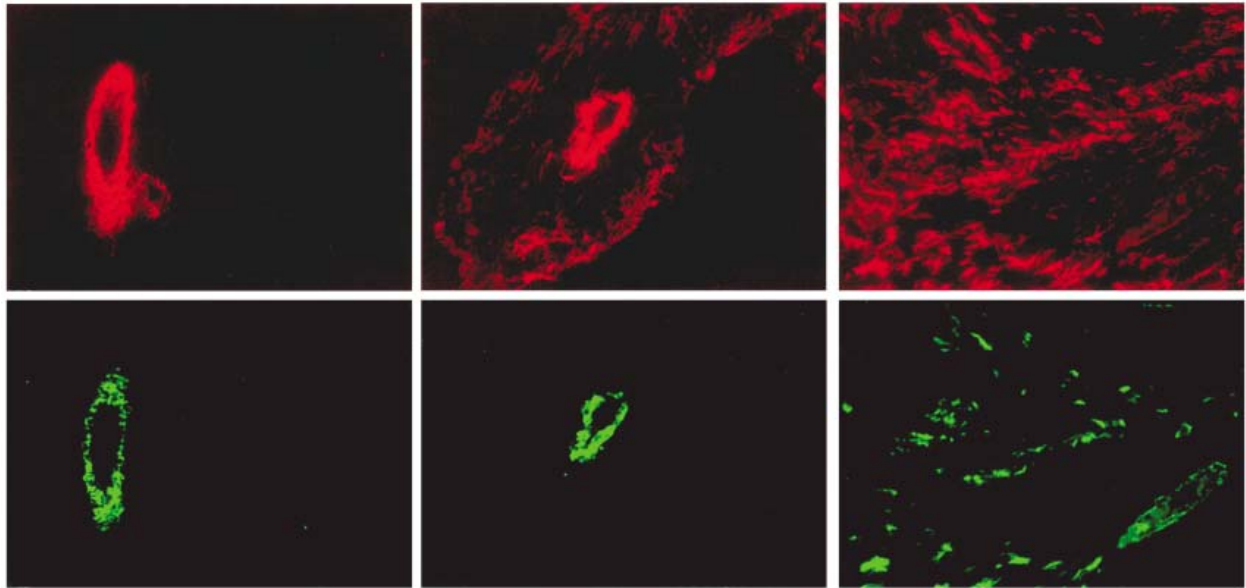
Two mechanisms have been proposed to account for the increased proliferation. First, it is possible that misdirection of cell-surface signal receptors could lead to inappropriate receptor synergy; in this regard, it is noteworthy that *ERBIN*, a mammalian protein with homology to *Scrib*, has been shown to interact with the epidermal growth factor receptor (EGFR) family member *ERBB2* (*HER2*)¹³⁷. Alternatively, mislocalization of the components of the adherens junctions might release contact inhibition, leading to hyperproliferation. At present, these mechanisms cannot be distinguished, and it is possible that both contribute to neoplastic transformation. Further investigations of molecules that maintain the tissue-specific functions of polarized epithelia will doubtless reveal more about their complex relationship with tumorigenesis.

FIGURE 2



Mechanisms of cell–cell and cell–ECM interactions. Integrin and non-integrin cell-surface receptors form attachments with the actin filaments in the cytoskeleton, and are able to sense elements of the extracellular matrix (ECM) to promote growth-factor activation. Tight junctions act as a barrier to the diffusion of solutes through the intercellular space and act as a boundary between the apical and basolateral plasma-membrane domains. Adherens junctions, which consist of extracellular E-cadherin dimers connected to cytoplasmic α - and β -catenin molecules, are anchored to actin filaments. Gap junctions provide a communication mechanism by allowing solutes and small signalling molecules to pass between adjacent cells. Desmosomes serve as anchoring points for INTERMEDIATE FILAMENTS and also provide signalling information.

FIGURE 3



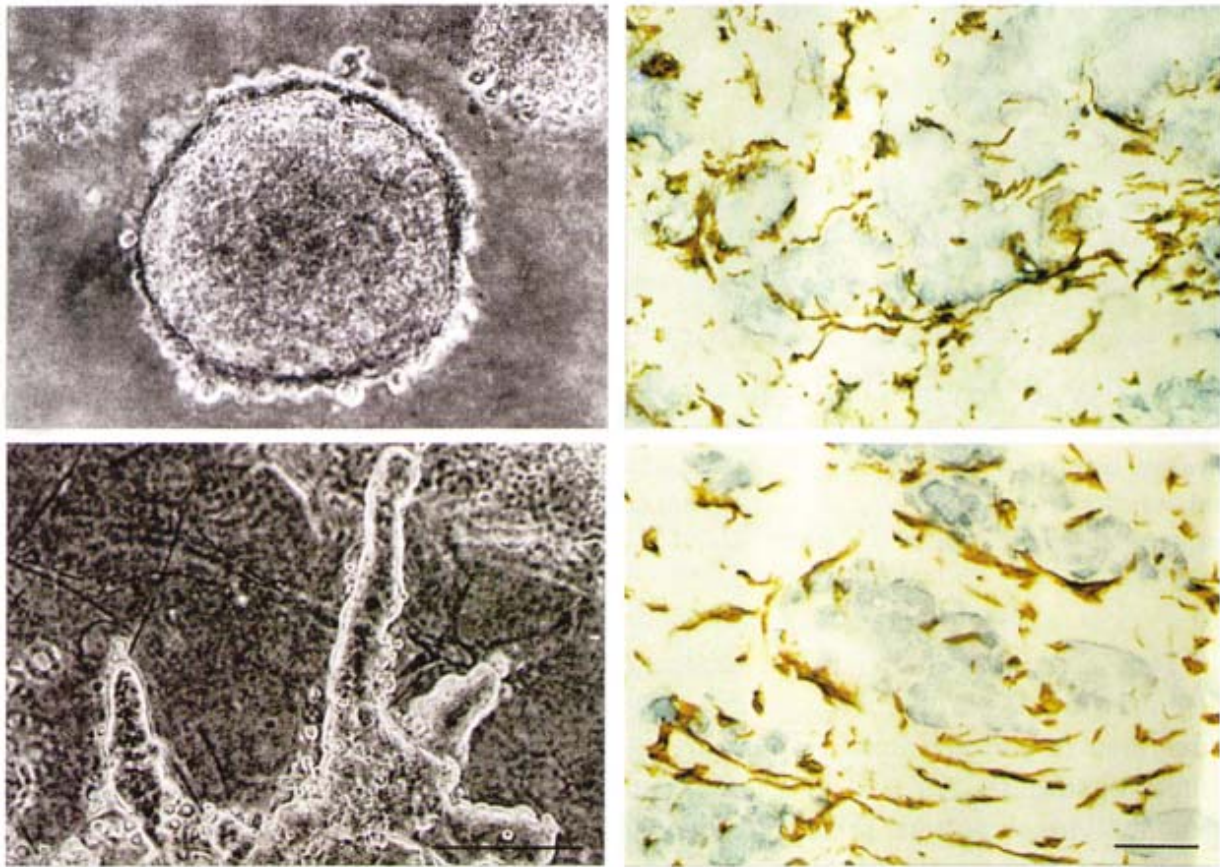
Differences in stroma between tumours. Interstitial stromal cells of normal and breast tumour tissues differ in levels of smooth muscle differentiation. **a** | Normal interstitial stroma(s) does not express smooth muscle actin (red) or **b** | smooth muscle myosin (green), indicating that smooth muscle differentiation has not taken place, although these cells do produce blood vessels (bv). **c–f** | Tumour tissues, by contrast, express high levels of smooth muscle actin (**c,e**). These images also show, however, that not all tumour stroma are similar. The tumour stroma shown in (**c**) and (**d**) expresses smooth muscle actin (**c**) but not smooth muscle myosin (**d**). In the tumour shown in **e** and **f**, the stromal cells express high levels of both actin and smooth muscle myosin. Adapted from REF. 142.

TABLE 1

Table 1 Myoepithelial proteins that suppress luminal tumours		
Protein	Function	Reference
α -smooth muscle actin	Cell structure	143
Cytokeratin 5	Cell structure	144
α 6-integrin	ECM receptor	145
Caveolin-1	Cell-surface molecule	146
Connexin 43	Gap-junction component	147
Maspin	Protease inhibitor	148
TIMP-1	Protease inhibitor	29
Relaxin	Hormone	149
Activin	Hormone	150

These myoepithelial-specific proteins (which are sometimes expressed in cultured epithelial cells) inhibit epithelial tumour formation, showing that molecules made by myoepithelial cells have tumour-suppressive activities.

FIGURE 4



The tumour microenvironment assay. a | Primary breast carcinoma cells form spherical colonies when cultured in three-dimensional collagen type I. **b** | Co-cultivation with stromal cells, however, causes the tumour cells to spread and become invasive. The degree of tumour growth increases with the density of the stromal cells. Staining of the coculture assay (**c**) and of tumour (**d**) with anti-vimentin antibody reveals the structural similarities of stromal cells in the presence or absence of cancer cells. (Reproduced with permission from REF. 142 © (1995) American Society for Clinical Investigation.)

BOX 2

Box 2 | Comparison between wound healing and tumour development

Wound healing and tumour development are dynamic, progressive processes that involve the interaction of several tissue types¹³⁸, and comparison of the two reveals many mechanistic similarities. **a** | Immediate reaction to wounding. Tissue injury leads to activation of platelets that form a haemostatic plug and also release vasoactive mediators to increase vascular permeability and to enable the influx of serum fibrinogen to generate the fibrin clot. Platelets produce chemotactic factors, including transforming growth factor- β (TGF- β) and platelet-derived growth factor (PDGF). These factors initiate the formation of granulation tissue by activating fibroblasts to produce matrix metalloproteinases (MMPs) and a number of growth factors, such as fibroblast growth factor-2 (FGF-2). These factors degrade dermal extracellular matrix, stimulate infiltration of macrophages and promote the development of new blood vessels. These interactions are potentiated by reciprocal signalling between the epidermis and dermal fibroblasts through growth factors, MMPs, and members of the TGF- β family. **b** | Reformation of the epithelial sheet. The complex reaction to wounding reduces epithelial adhesiveness and increases epithelial-cell mobility to re-form an intact sheet of tissue over the wound. Production of MMPs and proteolytic enzymes such as uroplasinogen activator (uPA) and tissue plasminogen activator (tPA) facilitates this re-epithelialization. Blood vessels can then enter the fibrin clot as epidermal cells resurface the wound. The lateral migration of the epidermal cells is followed by a reversion to the normal, non-motile phenotype, including regeneration of a basement membrane and resynthesis of HEMIDESMOSOMES. Following re-epithelialization, a new basement membrane is produced and many of the fibroblasts take on a myofibroblast phenotype to facilitate wound contraction. **c** | Reciprocal activation mechanisms in early tumours. Building on a rich, but inconclusive, literature spanning nearly a century (reviewed in REF. 35), Dvorak proposed that tumours activate some of the normal wound-healing responses¹³⁹. Although developing tumours do not disrupt the vascular tissue in the same way as in wounding, many of the processes occur in parallel. Tumour cells (blue) produce many of the same growth factors

that activate the adjacent stromal tissues in wounding or fibrosis^{37,140,141}.

Activated fibroblasts and infiltrating immune cells (macrophage) secrete MMPs and cytokines such as TGF- β , FGF-2, and PDGF. These factors potentiate tumour growth, stimulate angiogenesis, and induce fibroblasts to undergo differentiation into myfibroblasts and into smooth muscle.

d | Expression of proteases at the invasive front. Tumour cells, myofibroblasts and activated macrophages increase production of MMPs and uPA at the invasive front to stimulate angiogenesis and proliferation. Production of TGF- β also promotes tumour growth. uPAR, uroplasinogen receptor.

