

Radio Frequency Modelling for Future Wireless Sensor Network on Surface of the Moon

Jayesh P. Pabari¹, Yashwant B. Acharya¹, Uday B. Desai², Shabbir N. Merchant³, Barla Gopala Krishna⁴

¹PLANEX, Physical Research Laboratory, Ahmedabad, India

²Indian Institute of Technology, Hyderabad, India

³Indian Institute of Technology Bombay, Mumbai, India

⁴Space Application Centre, Ahmedabad, India

Email: jayesh@prl.res.in

Received January 6, 2010; revised February 8, 2010; accepted March 10, 2010

Abstract

In order to study lunar regolith properties, wireless sensor network is planned to be deployed on surface of the Moon. This network can be deployed having few wireless sensor nodes capable of measuring soil properties and communicating results, as and when ready. Communication scenario on lunar surface is quite different as compared to that on the Earth, as there is no atmosphere and also there are lots of craters as well as various terrain topologies. Since the deployment of sensors on the Moon is a challenging and difficult task, it is advisable to predict the behaviour of communication channel on lunar surface. However, communication models like Irregular Terrain Model used for terrestrial communication networks are not directly applicable for Unattended Ground Sensor type sensor networks and need modifications according to lunar surface conditions and lunar environment. Efforts have been put to devise a model of radio frequency environment on the Moon using basic equations governing various physical phenomena occurring during radio propagation. The model uses Digital Elevation Model of four sites of the Moon, measured by Terrain Mapping Camera on board Chandrayan-1, a recent Indian mission to the Moon. Results presented in this paper can provide understanding of percentage area coverage for given minimum received signal strength, potential sites for sensor deployment assuring wireless communication, decision whether a given sensor node can work and can provide suggestion for possible path of rover with cluster head to remain in contact with the nodes. Digital Elevation Model based results presented here can provide more insight in to the communication scenario on the Moon and can be very useful to mission planners.

Keywords: Wireless Model, Moon, DEM, Coverage

1. Introduction

In order to detect few regolith properties on lunar surface, a Wireless Sensor Network (WSN) is planned to be deployed near lunar South Pole, which utilizes wireless sensors capable of working in harsh environmental conditions. Main property of interest is permittivity obtainable from impedance sensor. Since the deployment of network on the Moon is a challenging and difficult task, it is advisable to predict the behaviour of communication channel on the lunar surface by some channel model.

There have been various models for radio communication on the Earth, for example Irregular Terrain Model (ITM) also known as Longley-Rice model given

by G. Hufford, A. Longley and W. Kissick [1] and model given by Durkin [2,3]. ITM is a good model for terrestrial communication network and it uses minimum antenna height as 0.5 m for simulation while Durkin's model does not consider multipath effect in the simulation. Hata [4] had proposed an empirical formulation of graphical path loss valid from about 150 MHz to 1500 MHz and it was extended up to 2 GHz. Walfisch and Bertoni [5] gave a model to consider impact of rooftops and building height by using diffraction to predict average signal strength at street level. Alberto Cerpa *et al.* [6] describes statistical model of lossy links in wireless sensor networks. S. Willis and C. J. Kikkert [7] have given radio propagation model for long range wireless sensor networks. Chirag Patel [8]

has described wireless channel modeling in his thesis. Vishwanath Chukkala *et al.* [9] and Anirudh Daga *et al.* [10] gave modeling and simulation of Radio Frequency (RF) environment of Mars.

In case of present application scenario, operating frequency is to be 2.4 GHz and sensors are to be deployed on lunar surface, where operating conditions are different than that on the Earth. It is known that there is no atmosphere on the Moon and there exists very high vacuum of the order of 10^{-12} Torr [11,12]. The communication models used for terrestrial communication networks are not directly applicable to Unattended Ground Sensor (UGS) type sensor network, like that planned on the Moon and need modification according to lunar surface condition. This has motivated us to carry out the work presented in this paper. Efforts have been put to derive modeling of radio frequency environment on the Moon, using basic equations governing various physical phenomena occurring during radio propagation. Our work uses Digital Elevation Model (DEM) of four sites of the Moon, measured by Terrain Mapping Camera (TMC) on board Chandrayan-1, a recent Indian mission to the Moon. Results presented in this paper can provide understanding of percentage area coverage for given minimum received signal strength, potential sites for sensor deployment assuring wireless communication, decision whether a given sensor node could be used and suggestion for possible path of rover (carrying cluster head) to remain in contact with the nodes.

Section 2 presents suitability of existing propagation models for lunar application, Section 3 describes physical phenomena which can occur on the Moon and associated path losses, Section 4 gives lunar wireless model, Section 5 gives details of DEM of selected sites on lunar surface, Section 6 shows results and paper ends with conclusion.

2. Suitability of Existing Propagation Models for Lunar Application

It is expected that the communication would be better on the Moon as compared to that on the Earth, due to absence of atmosphere on the Moon. Few existing propagation models were developed for communication on the Earth and need to be reviewed for the Moon in view of their applicability.

2.1. Irregular Terrain Model

Irregular Terrain Model (ITM) was suggested by Rice *et al.* [13] and is also known as Longley-Rice model. Hufford [14] informed that it can be used in area prediction mode and point-to-point mode. ITM takes terrain and other parameters as input and produces output as

signal distribution in a given area. There are certain limitations of ITM that it can be used for minimum antenna height of 0.5 metre and minimum distance for communication as 1 km. The Point-To-Point (PTP) model given by Wong [15] is based on Longley-Rice model. However, PTP model describes method to obtain diffraction loss. As the wireless sensor network involves deployment of sensors on the ground with very small antenna heights especially at 2.4 GHz operating frequency, the ITM can't be used for such applications.

2.2. Two-Ray Model

For a line-of-sight communication, a two-ray model was given by Neskovic *et al.* [16]. This theoretical model incorporates reflection by the reflection coefficient, which is calculated from incidence angle, dielectric constant, surface conductivity and polarization of antenna. The signal strength at the receiver as given in (1) is shown in Willis [7] using free space loss and reflection.

$$P_r = \frac{P_t G_t G_r \cdot \lambda^2}{16 \cdot \pi^2} \cdot \left| \frac{1}{d_1} \exp(-jkd_1) + \Gamma(\psi) \frac{1}{d_2} \exp(-jkd_2) \right|^2 \quad (1)$$

where d_1 and d_2 are lengths of first and second path respectively. The two ray model is mostly used for direct and ground reflected rays. In case of lunar wireless sensor network, sensor nodes are to be the surface with very small antenna heights and therefore ground reflected signal is not expected at the receiver.

2.3. VSS Multipath Model

Signals reflected from reflectors would reach the receiver with different strengths and phases with reference to direct signal. At receiver, equivalent signal strength is equal to superposition of varying amplitude and phase signals and it is possible to get overall signal strength as reduced or improved. The multipath channel model in AWR Visual System Simulator [17] uses Equations (2) and (3) to obtain signal strength for a sample k . The multipath model was implemented by Willis [18] in MATLAB.

$$x(k) = \sum_{i=1}^N path(k, i) \quad (2)$$

$$path(k, i) = A_i \cdot x(k - d_i) \cdot \exp\left(\frac{j2\pi \cdot V \cdot f_c \cdot \text{Cos}\theta_i}{C}\right) \quad (3)$$

where $x(k)$ is k th sample, N is number of multipath signals, $path(k, i)$ is contribution of i th multipath signal determined by (3), A_i is gain of i th path, $x(k - d_i)$

is delayed sample associated with path i and exponential term represents doppler shift due to receiver movement. This model may be used for moving nodes, which is not the case for lunar wireless sensor network.

2.4. Multipath Signal Distribution

Instantaneous receiver signal strength (envelope) is represented by either Rayleigh or Rician distribution as shown by Hernando *et al.* [19]. Rayleigh distribution considers only multipath components available and does not take direct path. However, Rician distribution considers direct as well as multipath components. Communication on lunar surface is expected to be line-of-sight and also multipath due to reflections from terrain and therefore, Rician distribution is more suited for lunar application. Rician distribution is shown by Hernando *et al.* [19] and given below:

$$p(r) = \frac{r}{\sigma^2} \cdot \exp\left[-\frac{r^2 + a^2}{2 \cdot \sigma^2}\right] \cdot I_0\left(\frac{r \cdot a}{\sigma^2}\right) \quad \text{for } r \geq 0 \tag{4}$$

where I_0 is modified 0th order Bessel function and value of a depends on direct component. The Rician function is usually expressed in terms of carrier-to-multipath ratio or k factor as

$$k = \frac{c}{m} = \frac{a^2}{2 \cdot \sigma^2} \tag{5}$$

where c and m are strengths of carrier and multipath components respectively. As k increases, received signal strength increases and for larger values of k , $p(r)$ becomes Gaussian.

2.5. Willis Multipath Model

Willis [18] has given extended version of two ray model as multipath model, shown in Equation (6) for terrestrial application on the Earth.

$$P_r = \frac{P_t G_t G_r \cdot \lambda^2}{16 \cdot \pi^2} \cdot |L_{d1} \Gamma_1(\psi_1) \frac{1}{d_1} \exp(-jkd_1) + \dots + L_{dn} \Gamma_n(\psi_n) \frac{1}{d_2} \exp(-jkd_2)|^2 \tag{6}$$

3. Physical Phenomena and Path Loss on the Lunar Surface

Since the Earth based model cannot be directly used for lunar applications, we have examined various physical phenomena occurring during wave propagation in general and those applied to wave propagation on the Moon. Such phenomena and losses associated with them are

given below and we have combined them to arrive at the path loss given in Section 4.

3.1. Free Space Loss

The plan is to use compact wireless impedance sensors (along with other types of sensors) for detection of electrical properties of lunar Regolith having small size quarter wave antenna (3.125 cm). The idea is to use line of sight propagation technique for small distances of up to few hundred metres. Under ideal communication conditions, the power radiated from antenna is omni directional in the plane of interest, which is horizontal here and power is inverse square function of the distance for free space wave propagation given below [19] by Friis formula.

$$P_r = \frac{P_t G_t G_r \lambda^2}{16 \cdot \pi^2 d^2} \tag{7}$$

where P_t and P_r are transmitter and receiver powers, G_t and G_r are gains of transmitter and receiver antennas, λ is wavelength of operation and d is distance from the transmitter. Free space loss is a basic loss for communication on the lunar surface, since there is a vacuum on the Moon.

3.2. Reflection

For communication on the Earth, there can be factors like steady and moving reflectors and scatterers, atmospheric absorption etc and can lead to multipath components at the receiver. Due to multipath components, signal strength can vary at the receiver due to moving scatterers. However, in case of lunar application, there are no moving objects on the surface and therefore there can be multipath signals at the receiver due to surface topography, but received signal strength is not expected to vary randomly due to steady terrain, but it can show periodic variations due to signals travelling in different time durations. Also, there is no atmosphere on the Moon and therefore there are no atmospheric losses, which are present on the Earth. The main possibility of signal getting affected is that of the surface reflections due to uneven terrain structure. This can cause multipath propagation and signal reaching at the receiver by direct path will be modified due to multipath components. The expected number of multipath components is few as the mission lander should land on comparatively plane or smooth surface, where rover can move easily. The wavelength of signal is 12.5 cm at 2.4 GHz wireless operation and objects should be of larger size to cause the reflection. Parsons [20] derived the received signal strength using reflection coefficient (Γ) from the reflector as given below.

$$P_r = \frac{P_t G_t G_r \lambda^2}{16 \cdot \pi^2 d^2} \cdot |1 + \Gamma \exp(j\Delta)|^2 \quad (8)$$

where $\Gamma = \frac{a \cdot \sin\psi - \sqrt{(\epsilon_r - jx) - \cos^2\psi}}{a \cdot \sin\psi + \sqrt{(\epsilon_r - jx) - \cos^2\psi}}$ is reflection coefficient

Δ = phase shift created due to reflected signal

$a = 1$ or $(\epsilon_r - jx)$ for horizontal or vertical polarization respectively

ψ = angle of incidence with vertical from transmitter antenna to the reflector

ϵ_r = relative dielectric constant of the ground

$$x = \frac{\sigma}{2 \cdot \pi \cdot f \cdot \epsilon_0}$$

σ = conductivity of the ground

f = frequency of operation

ϵ_0 = free space permittivity

It is also possible to calculate received signal strength by the Equation (9) given by Hernando *et al.* [19] derived from two ray model for longer link distances and lower antenna heights at both ends having direct visibility of each other.

$$P_r = \frac{P_t G_t G_r h_t^2 h_r^2}{d^4} \quad (9)$$

where h_t and h_r are heights of transmitter and receiver antennas respectively. However, for sensors being on surface, Equation (9) may not be used. Reflections are expected from nearby ground terrain on the Moon. Infact the major component for channel fading on the Moon is due to multipath created by reflections from craters and surface irregularities. Also, transceiver used for ground sensors should not use horizontal polarization; otherwise signal would be attenuated [21] very near the transmitter. Instead, vertical polarization should be used, which can provide sufficient signal at farther distances.

3.3. Reflection Scattering

When signal is reflected from lunar surface, it is likely that the ray may be scattered due to dispersed signal. Gibson [22] has suggested this specular reflection and stated that roughness of a surface can be classified by Rayleigh criterion given below:

$$h_c = \frac{\lambda}{8 \cdot \cos\theta_i} \quad (10)$$

where θ_i is angle of incidence at the reflector. Gibson [22] gave a parameter h , which represents minimum to maximum deviation about mean terrain height. If $h > h_c$,

then terrain is considered as rough terrain and the loss for it is considered by multiplying reflection coefficient by a scattering loss factor ρ_s calculated by Bothias' equation as below:

$$\rho_s = \exp[-8 \cdot (\frac{\pi\sigma_h \cos\theta_i}{\lambda})^2] \cdot I_0[8(\frac{\pi\sigma_h \cos\theta_i}{\lambda})^2] \quad (11)$$

where σ_h is standard deviation of surface height about the mean surface height and I_0 is the 0^{th} order Bessel function of the first kind. On the lunar surface, the regions are mostly rough and may have varying sized objects, which can lead to scattering losses.

3.4. Diffraction

For line of sight communication, if an obstacle of size comparable to wavelength is present in between transmitter and receiver, then diffraction loss can occur at the edge of an obstacle. The signal may be scattered and attenuated before reaching to the receiver. Diffraction from knife-edge obstacle can cause signal to bend and Wong [15] stated that bending of signal due to knife-edge obstacle causes higher signal strength as compared to that due to rounded. On the lunar surface it is likely to have such obstacles in between transmitter and receiver, which may be considered only for direct path but the deployment is supposed to be in almost plane terrain for smooth movement of the rover and hence possibility of occurrence of such loss is rare and may be neglected.

4. Lunar Wireless Model

Equation (6) given by Willis [18] does not include possibility of direct path, but it is expected to be present in case of wireless sensor networks. Also, diffraction loss given by Wong [15] may be considered for direct path from transmitter to receiver and not for multipath for operation at 2.4 GHz frequency. Considering diffraction loss only for direct path and including reflection scattering loss factor, following equation is given for obtaining area coverage by wireless sensor network on the lunar surface:

$$P_r = \frac{P_t G_t G_r \cdot \lambda^2}{16 \cdot \pi^2} \cdot |L_{dd} \frac{1}{d_d} \exp(-jkd_d) + \rho_{s1} \Gamma_1(\psi_1) \frac{1}{d_1} \exp(-jkd_1) + \rho_{s2} \Gamma_2(\psi_2) \frac{1}{d_2} \exp(-jkd_2) + \dots + \rho_{sn} \Gamma_n(\psi_n) \frac{1}{d_n} \exp(-jkd_n)|^2 \quad (12)$$

where L_{dd} is diffraction loss for direct path, d_d is direct path distance, k is phase constant, ρ_{sn} is reflection scattering loss factor of n th multipath, Γ_n is reflection coefficient of n th multipath, ψ_n is angle of incidence at n th reflector and d_n is distance of n th multipath component.

5. Digital Elevation Model of Lunar Surface

Recent mission to the Moon from India, Chandrayan-1, had Terrain Mapping Camera (TMC) on board for deriving Digital Elevation Model (DEM) of the Moon and has provided good quality data during the mission time. Four sample sites at various locations on the Moon have been selected considering almost plane surface, region with some peaks and region with few craters in order to study lunar radio propagation model. **Table 1** shows details of site used in deriving communication area coverage. DEM data for various sites were obtained during different orbits and resolutions were different. Sites 1 and 2 have resolution of 56.1 m in both directions; site 3 has resolution of 122.67 m for horizontal (longitude) direction and 53.34 m for vertical (latitude) direction, while site 4 has 185.07 m for both directions. **Figures 1(a) to 1(d)** show images of all these four sites respectively, taken by TMC on board Chandrayan-1.

6. Results

Lunar wireless model is given in Equation (12), which considers all possible phenomena and losses for wireless sensor network on the lunar surface. Diffraction loss is expected to be very low in value as compared to direct path and multipath reflections for targeted application. Since, major interest is in establishing direct line-of-sight communication between transmitter and receiver, such loss is neglected. As readily available software cannot be used for wireless sensor network for lunar applications, MATLAB code was developed and DEM data were taken as input in the programme along with values shown in **Table 2** and results of radio coverage are

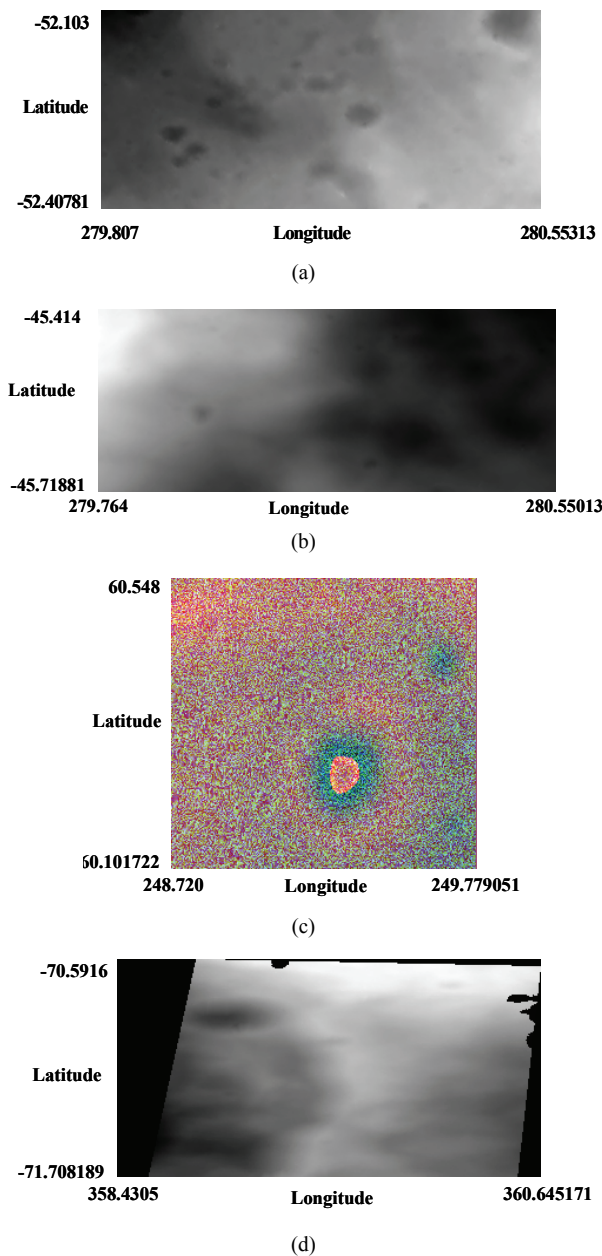


Figure 1. (a) Lunar site 1; (b) Lunar site 2; (c) Lunar site 3; (d) Lunar site 4.

Table 1. Lunar sites for RF model.

Site No.	Crater Near the Site Location	Lunar Latitude	Lunar Longitude
1	Catalan	– 52.103 to – 52.40781	279.807 to 280.55313
2	Baade	– 45.414 to – 45.71881	279.764 to 280.51013
3	Zsigmondy	60.548 to 60.101722	248.720 to 249.779051
4	Moretus	– 70.5916 to – 71.708189	358.4305 to 360.645171

Table 2. Input parameters for lunar radio frequency model.

Parameter for Model	Value
Moon Radius	1737.4 km
Transmitter Power	0 dBm
Transmitter Antenna	Quarter Wave Monopole
Receiver Antenna	Quarter Wave Monopole
Frequency of Operation	2.4 GHz
Lunar Regolith Dielectric Constant [24]	4
Lunar Regolith Conductivity [25]	10^{-8} s/m
Wave Polarization	Vertical
Transmitter Location	Middle Left

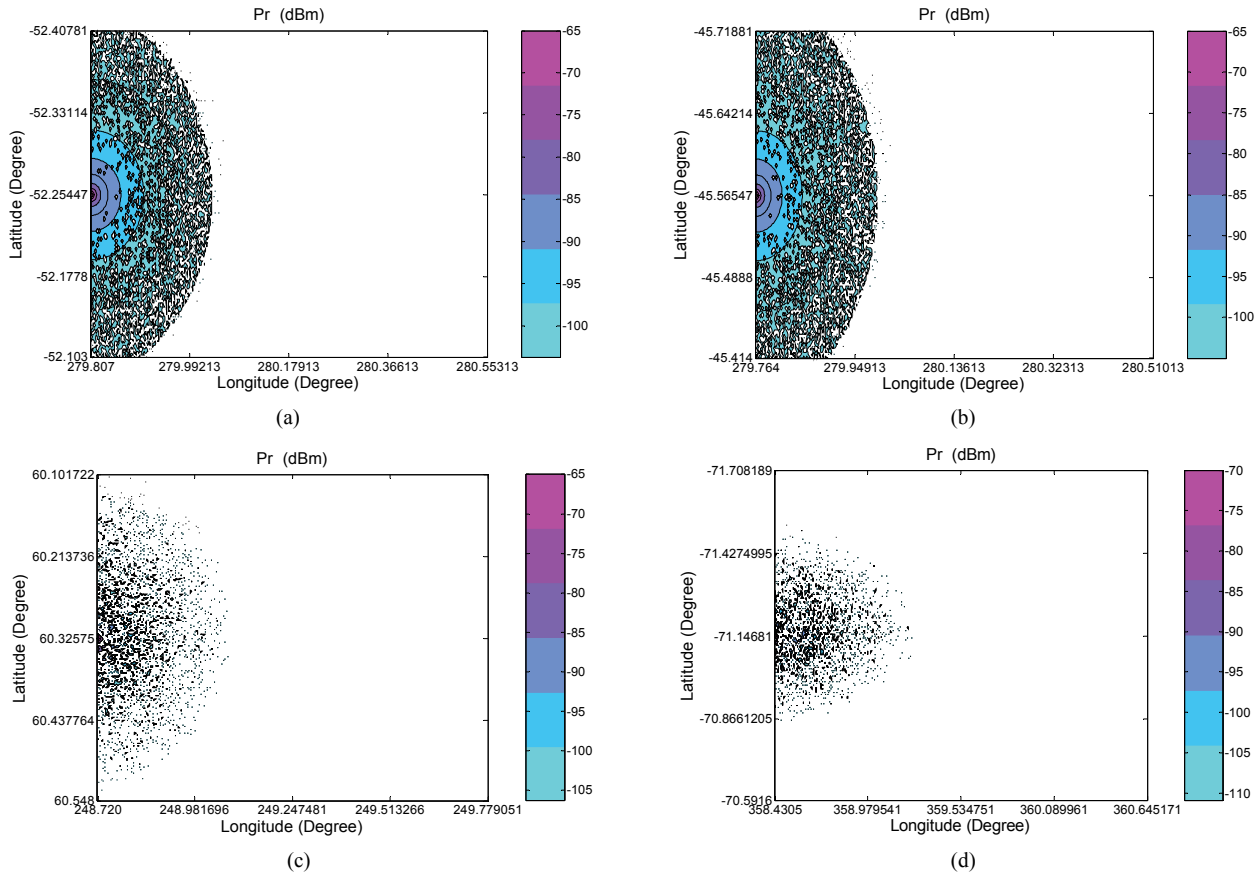


Figure 2. (a) RF model for site 1; (b) RF model for site 2; (c) RF model for site 3; (d) RF model for site 4.

depicted in Figures 2(a) to 2(d) respectively; for sites 1, 2, 3 and 4. For a given area on the Moon, there can be many multipath components depending up on terrain and if all are allowed to contribute in the code, then computational complexity is increased highly due to involvement of higher order matrix. Moreover, it needs highly sophisticated computing facility and it takes very long time for computation. Number of multipath components may, therefore, be restricted to smaller numbers, which is reasonably justified, as distance travelled by signal along multipath is quite large in most of the regions as compared to that for the direct path and hence the contribution of those multipath components would be very less as compared to contribution from the direct path. Normally, sensor node operating in 2.4 GHz ISM band has 0 dBm as output power and its receiver has sensitivity of about -100 dBm [23]. We have calculated radio coverage of the sites as a ratio of occupied region having more than -100 dBm received signal strength to total region under consideration. Table 3 shows percentage radio coverage of all sites for 250 kbps link, effectively showing useful area for sensor network deployment.

Sites 1 and 2 have been selected with comparatively plane surface having lesser undulations on the surface,

while sites 3 and 4 have different profiles, for example, site 4 is at the edge of Moretus crater near lunar South Pole. Due to this, site coverage is very less for sites 3 and 4 as compared to that for sites 1 and 2, as expected. From the derived radio coverage at selected lunar sites, one can know the areas having more than some specific value of received power, for example, region receiving more than -100 dBm power. Results indicate the percentage coverage of a given site with known topography and also the possibility of checking if a given sensor node would be useful on the Moon, as far as power is concerned. Sensor nodes should preferably be deployed in the region where sufficient amount of power is available (pink in the coverage patterns). In case of lunar wireless sensor network, rover is supposed to carry the cluster

Table 3. Site coverage.

Site	Site Coverage (250 kbps link)
1	11.27 %
2	10.02 %
3	2.73 %
4	1.01 %

head and radio coverage patterns can suggest possible path for the rover to move, assuring intact communication link with the nodes.

7. Conclusions

In this paper, we have investigated that existing radio frequency models cannot be directly applied to lunar wireless sensor network and arrived at lunar wireless model from fundamental physical phenomena occurring during wave propagation on the Moon. We have presented radio signal coverage patterns of four lunar sites by using actual DEM data of the Moon. We have used 0 dBm transmitter power at 2.4 GHz frequency with quarter wave antennas for transmitter and receiver. The results show percentage coverage for 250 kbps links on the lunar surface, suggesting possible use of commercially available transceiver in sensor node as well as possible deployment sites and rover paths to assure wireless connectivity.

8. References

- [1] G. A. Hufford, A. G. Longley and W. A. Kissick, "A Guide to the Use of the ITS Irregular Terrain Model in the Area Prediction Mode," *National Telecommunication and Information Administration*, Report 82-100, NTIS Document PB82-217977, April 1982.
- [2] R. Edwards and J. Durkin, "Computer Prediction of Service Areas for VHF Mobile Radio Networks," *Proceedings of IEE*, Vol. 116, September 1969, pp. 1493-1500.
- [3] J. Durkin, "Computer Prediction of Service Areas for VHF and UHF Land Mobile Radio Services," *IEEE Transactions on Vehicular Technology*, November 1977, pp. 323-327.
- [4] M. Hata, "Empirical Formula for Propagation Loss in Land Mobile Radio Services," *IEEE Transactions on Vehicular Technology*, August 1980, pp. 317-325.
- [5] J. Walfisch and H. L. Bertoni, "A Theoretical Model of UHF Propagation in Urban Environments," *IEEE Transactions on Antennas Propagation*, Vol. 36, 1988, pp. 1788-1796.
- [6] C. A. E., Wong, J. L., Kuang, L. Potkonjak and M. D. Estrin, "Statistical Model of Lossy Links in Wireless Sensor Networks," *Proceedings of the 4th International Symposium on Information Processing in Sensor Networks*, Center for Embedded Network Sensing, University of California Los Angeles, 2005. <http://escholarship.org/uc/item/4s2698fs>
- [7] S. L. Willis and C. J. Kikkert, "Radio Propagation Model for Long-Range Ad Hoc Wireless Sensor Network," *International Conference on Wireless Networks, Communications and Mobile Computing*, Vol. 1, No. 13-16, 2005, pp. 826-832. <http://ieeexplore.ieee.org/Xplore/login.jsp?url=http%3A%2F%2Fieeexplore.ieee.org%2Fiel5%2F10391%2F33022%2F01549514.pdf%3Farnumber%3D1549514&authDecision=-203>
- [8] C. S. Patel, "Wireless Channel Modeling, Simulation, and Estimation," Ph. D. Thesis, *School of Electrical and Computer Engineering, Georgia Institute of Technology*, May 2006.
- [9] V. Chukkala, P. DeLeon, S. Horan and V. Velusamy, "Radio Frequency Channel Modeling for Proximity Networks on The Martian Surface," *Computer Networks*, Vol. 47, 2005, pp. 751-763.
- [10] A. Daga, G. R. Lovelace, D. K. Borah and P. L. De Leon, "Terrain-Based Simulation of IEEE 802.11a and b Physical Layers on the Martian Surface," *IEEE Transactions on Aerospace and Electronic System*, Vol. 43, No. 4, October 2007, pp. 1617-1624.
- [11] P. D. Spudis, "Introduction to the Moon, Moon 101, NASA Johnson Space Centre," 17 December 2009. <http://www.spudislunarresources.com/moon101.htm>
- [12] "Anonymous," 17 December 2009. <http://en.wikipedia.org/wiki/Moon>
- [13] P. L. Rice, A. G. Longley, K. A. Norton and A. P. Barsis, "Transmission Loss Predictions for Tropospheric Communication Circuits," *Technical Note 101*, National Bureau of Standards, Vol. 1-2, 1967.
- [14] G. Hufford, "The ITS Irregular Terrain Model Version 1.2.2 - The Algorithm," 12 December 2009. http://flattop.its.bldrdoc.gov/itm/itm_alg.pdf
- [15] H. Wong, "Field Strength Prediction in Irregular Terrain - The PTP Model," 12 December 2009. <http://www.fcc.gov/oet/fm/ptp/report.pdf>
- [16] A. Neskovic, N. Neskovic and G. Paunovic, "Modern Approaches in Modeling of Mobile Radio Systems Propagation Environment," *IEEE Communications Surveys*, Vol. 3, No. 3, 2000, pp. 1-12.
- [17] "Microwave Office," 12 December 2009. <http://web.awrcorp.com/products/mwoffice/>
- [18] S. L. Willis, "Investigation in to Long Range Wireless Sensor Networks," Ph. D. Thesis, James Cook University, Townsville, Australia, December 2007.
- [19] J. M. Hernando and F. Perez-Fontan, "Introduction to Mobile Communications Engineering," Artech House, Boston, 1999.
- [20] J. D. Parsons, "The Mobile Radio Propagation Channel," 2nd Edition, Wiley, New York, 2000.
- [21] G. Kennedy, "Electronic Communication Systems," 3rd Edition, McGraw-Hill Book Company, 1985.
- [22] J. D. Gibson, "The Mobile Communications Handbook," CRC Press Inc., Florida, 1996.
- [23] Atmel, 17 December 2009. http://www.atmel.com/dyn/products/product_card.asp?part_id=3941
- [24] M. G. Buehler, H. Bostic, K. B. Chin, T. McCann, D. Keymeulen, R. C. Anderson, S. Seshadri and M. G. Schaap, "Electrical Properties Cup (EPC) for Characterizing Water Content of Martian and Lunar Soils," *IEEE Aerospace Conference*, 2006. <http://ieeexplore.ieee.org/Xplore/login.jsp?url=http%3A%2F%2Fieeexplore.ieee.org%2Fiel5%2F11012%2F34697%2F01655752.pdf&authDecision=-203>
- [25] D. H. Chung, W. B. Westphal and G. R. Olhofet, "Dielectric Properties of Apollo 14 Lunar Samples," *Proceedings of the Third Lunar Science Conference*, The MIT Press, Cambridge, Vol. 3, 1972, pp. 3161-3172.