

Rare exonic deletions implicate the synaptic organizer Gephyrin (*GPHN*) in risk for autism, schizophrenia and seizures

Anath C. Lionel^{1,2}, Andrea K. Vaags¹, Daisuke Sato¹, Matthew J. Gazzellone^{1,2}, Elyse B. Mitchell¹², Hong Yang Chen¹, Gregory Costain³, Susan Walker¹, Gerald Egger^{4,16}, Bhooma Thiruvahindrapuram¹, Daniele Merico¹, Aparna Prasad¹, Evdokia Anagnostou⁵, Eric Fombonne⁶, Lonnie Zwaigenbaum⁷, Wendy Roberts⁸, Peter Szatmari⁹, Bridget A. Fernandez¹⁰, Lyudmila Georgieva¹⁸, Linda M. Brzustowicz¹⁵, Katharina Roetzer¹⁷, Wolfgang Kaschnitz¹⁷, John B. Vincent^{4,11}, Christian Windpassinger¹⁶, Christian R. Marshall^{1,2}, Rosario R. Trifiletti¹⁴, Salman Kirmani¹³, George Kirov¹⁸, Erwin Petek¹⁶, Jennelle C. Hodge^{12,13}, Anne S. Bassett^{3,11} and Stephen W. Scherer^{1,2,*}

¹The Centre for Applied Genomics and Program in Genetics and Genome Biology, The Hospital for Sick Children, Toronto, ON, Canada M5G 1L7 ²Department of Molecular Genetics and McLaughlin Centre, University of Toronto, Toronto, ON, Canada M5G 1L7 ³Clinical Genetics Research Program and ⁴Molecular Neuropsychiatry & Development Lab, Neurogenetics Section, Centre for Addiction and Mental Health, Toronto, ON, Canada M5S 2S1 ⁵Bloorview Research Institute, University of Toronto, Toronto, ON, Canada M4G 1R8 ⁶Department of Psychiatry, Montreal Children's Hospital and McGill University, Montreal, QC, Canada H3Z 1P2 ⁷Department of Pediatrics, University of Alberta, Edmonton, AB, Canada T5G 0B7 ⁸Autism Research Unit, the Hospital for Sick Children, Toronto, ON, Canada M5G 1X8 ⁹Department of Psychiatry and Behavioural Neurosciences, Offord Centre for Child Studies, McMaster University, Hamilton, ON, Canada L8S 4K1 ¹⁰Disciplines of Genetics and Medicine, Memorial University of Newfoundland, St. John's, NL, Canada A1B 3V6 ¹¹Department of Psychiatry, University of Toronto, Toronto, ON, Canada M5T 1R8 ¹²Department of Laboratory Medicine and Pathology and ¹³Department of Medical Genetics, Mayo Clinic, Rochester, MN 55905, USA ¹⁴Department of Neurology, UMDNJ - New Jersey Medical School, Newark, NJ 07101, USA ¹⁵Department of Genetics, Rutgers University, Piscataway, NJ 08854-8095, USA ¹⁶Institute of Human Genetics and ¹⁷Universitätsklinik für Kinder- und Jugendheilkunde, Medical University of Graz, Graz A-8036, Austria and ¹⁸MRC Centre for Neuropsychiatric Genetics & Genomics, Department of Psychological Medicine and Neurology, Cardiff University, Henry Wellcome Building, Heath Park, Cardiff CF14 4XN, UK

The *GPHN* gene codes for gephyrin, a key scaffolding protein in the neuronal postsynaptic membrane, responsible for the clustering and localization of glycine and GABA receptors at inhibitory synapses. Gephyrin has well-established functional links with several synaptic proteins that have been implicated in genetic risk for neurodevelopmental disorders such as autism spectrum disorder (ASD), schizophrenia and epilepsy including the neuroligins (NLGN2, NLGN4), the neurexins (NRXN1, NRXN2, NRXN3) and collybistin (ARHGFB9). Moreover, temporal lobe epilepsy has been linked to abnormally spliced *GPHN* mRNA lacking exons encoding the G-domain of the gephyrin protein, potentially arising due to cellular stress associated with epileptogenesis such as temperature and alkalosis. Here, we present clinical and genomic characterization of six unrelated subjects, with a range of neurodevelopmental diagnoses including ASD, schizophrenia or seizures, who possess rare *de novo* or inherited hemizygous microdeletions overlapping exons of *GPHN* at chromosome 14q23.3. The region of common overlap across the deletions encompasses

*To whom correspondence should be addressed at: The Centre for Applied Genomics, The Hospital for Sick Children, MaRS Centre, East Tower, 101 College Street, Room 14-704, Toronto, ON, Canada M5G 1L7. Tel: +1 4168137613; Fax: +1 4168138319; Email: stephen.scherer@sickkids.ca

exons 3–5, corresponding to the G-domain of the gephyrin protein. These findings, together with previous reports of homozygous *GPHN* mutations in connection with autosomal recessive molybdenum cofactor deficiency, will aid in clinical genetic interpretation of the *GPHN* mutation spectrum. Our data also add to the accumulating evidence implicating neuronal synaptic gene products as key molecular factors underlying the etiologies of a diverse range of neurodevelopmental conditions.

INTRODUCTION

GPHN encodes the protein gephyrin, a key scaffolding molecule in the neuronal postsynaptic membrane at inhibitory synapses (1,2). After its initial discovery by affinity chromatography experiments as co-purifying with the postsynaptic inhibitory glycine receptor, the protein was named ‘gephyrin’ from the Greek term for ‘bridge’, in line with its proposed activity as an intermediary molecule connecting neurotransmitter receptors to the postsynaptic microtubule cytoskeleton (3). Follow-up experiments demonstrated that the clustering and postsynaptic localization of both major types of inhibitory receptors (glycinergic and GABAergic) depend on direct protein–protein interactions of gephyrin with subunits, specifically of the glycine receptor (4) and the GABA_A receptor (5). Gephyrin clustering is essential for GABAergic synapse stability and aberrant *GPHN* expression has been observed in the hippocampus and adjacent neocortex of both patients with temporal lobe epilepsy (TLE) and in a rat model of TLE (6). These findings are in line with known deficits in GABAergic synaptic transmission in TLE (7). One potential molecular explanation for gephyrin’s involvement in the epileptic hippocampus could be abnormally spliced forms of RNA produced by cellular stress-induced exon skipping, which can lead to altered or inactive protein (8). However, there have been no reports of genomic *GPHN* mutations in patients with epilepsy.

In addition to its potential involvement in epilepsy, gephyrin has functional links with several synaptic proteins, mutations of which have been reported in a range of neurodevelopmental disorders (Fig. 1 and Supplementary Material, Table S1). Together with collybistin, gephyrin forms complexes with the postsynaptic neuroligin proteins NLGN2 (9) and NLGN4 (10). Gephyrin’s specific postsynaptic localization and clustering are mediated by members of the presynaptic neuroligin protein family (11). This complex interplay of gephyrin with the neuroligins and neuroligins not only attests to its importance in the proper formation and function of synapses, but is also of particular interest given the substantial evidence implicating these trans-synaptic adhesion molecules in genetic risk for a range of neurodevelopmental conditions (12,13), including autism spectrum disorder (ASD) (14–18), schizophrenia (16,19,20) and epilepsy (21). Of specific relevance to gephyrin, rare point mutations in *NLGN2* (20) and *NLGN4* (14) have been identified in patients with schizophrenia and ASD, respectively, while mutations in the collybistin gene (*ARHGEF9*) have been reported in cases with intellectual disability (ID) and epilepsy (22–24). Frameshift mutations truncating *NRXN1* and *NRXN2* in patients with schizophrenia and ASD, respectively, were also observed to abolish the ability of these proteins to induce gephyrin clustering at dendrite contact sites when synaptogenic activity was tested in neuron co-culture assays (17). The SHANK proteins, which act as postsynaptic neuronal

scaffolding proteins in excitatory synapses (a role analogous to that performed by gephyrin in inhibitory synapses), have been implicated by rare mutations in genetic risk for ASD (25–27), schizophrenia (28) and epilepsy (29).

Given the strong evidence supporting *GPHN* as a candidate molecule for involvement in neurodevelopmental disorders, we examined the gene for copy number variations (CNVs) and point mutations in patients from ASD, schizophrenia and seizure disorder case cohorts.

RESULTS

Detection and inheritance testing of rare microdeletions at the *GPHN* locus

We screened the *GPHN* locus for CNVs using high resolution microarray data from 5384 individuals from ASD, schizophrenia and seizure disorder patient cohorts (Materials and Methods). In five of these patients, we identified hemizygous deletions at 14q23.3 interrupting multiple exons of *GPHN* (Fig. 2 and Table 1). There was also an earlier report of a 183 kb deletion affecting six exons of *GPHN* in a single individual from a cohort of 3391 schizophrenia patients studied by the International Schizophrenia Consortium (30). We were able to obtain additional clinical details for this patient and his family (Family 6 in Figs 2 and 3). Independent experimental validation of the array calls was performed using quantitative PCR (qPCR) or fluorescence *in situ* hybridization (FISH). None of the CNVs detected at other loci in probands from the six families were predicted to be of clinical significance when classified based on American College of Medical Genetics guidelines for interpretation of CNVs (31) (Supplementary Material, Tables S2–S7). Parental testing for CNV status at the *GPHN* locus revealed that the deletions arose *de novo* in three of the probands (Families 1, 3 and 5 in Fig. 3). The deletion in the proband from Family 2 with ASD was inherited from his father, who was reported to have sub-clinical socialization deficits, but no formal diagnosis of ASD. The deletion was not present in the three sisters of the proband. DNA samples were not available from the parents in Family 4 for inheritance testing. The deletion in the proband from Family 6 was inherited from his mother, who was apparently unaffected. DNA samples were not available from the maternal grandmother of the proband, who was reported to have schizophrenia.

Frequency comparison of *GPHN* deletions in cases and controls

Deletions affecting exons of *GPHN* are extremely rare in the general population. Of the 27 019 population-based control individuals examined for CNVs at this locus (Supplementary Material, Table S8), only three (two from the Study of Addiction: Genetics and Environment (SAGE) control data set and

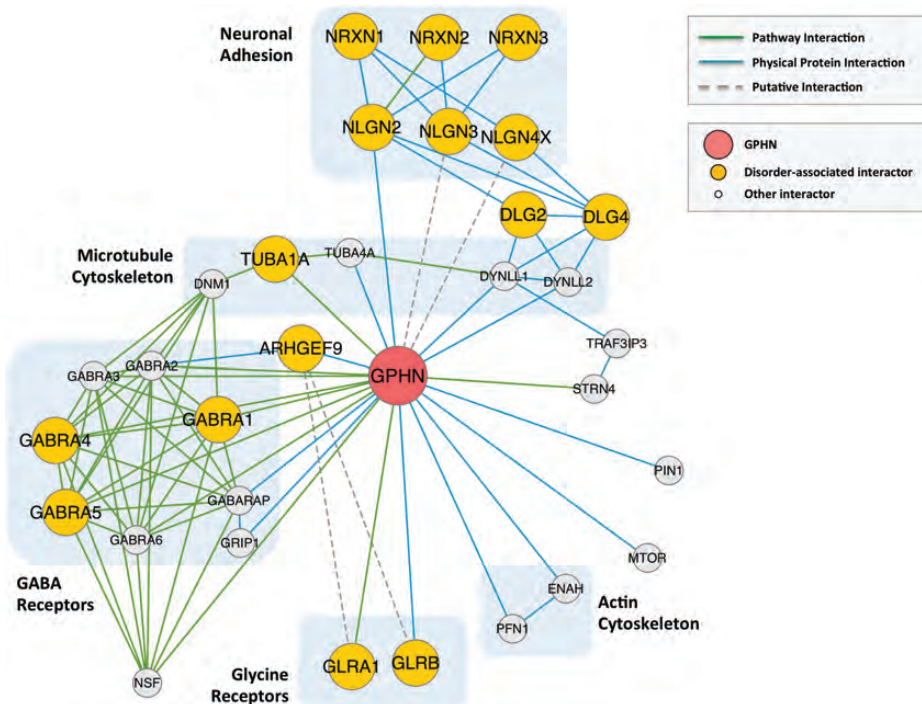


Figure 1. Functional interaction network of Gephyrin. The top 50 interactors of GPHN according to the STRING and GeneMANIA databases were manually filtered and integrated to define the bona-fide GPHN interaction network; the majority of direct interactors were retained. Gephyrin's interactions with other proteins have been reviewed by Treterer *et al.* (1) and Fritschy *et al.* (2). For full names of gene symbols in the figure, see Supplementary Material, Table S1.

one from the International Schizophrenia Consortium control data set) possessed exonic *GPHN* deletions. CNVs present in control individuals might be indicative of variable expression of *GPHN* deletions, lack of rigorous assessment of neuropsychiatric phenotype in the controls, or false-positive calls since DNA was not available from the two SAGE control individuals for experimental validation. Taken together, the frequency of experimentally validated exonic deletions at the *GPHN* locus in cases is significantly greater than that in controls (6/8775 cases versus 3/27 019 controls, respectively; Fisher's exact test two-sided $P = 0.009$). There were no exonic deletions reported at the *GPHN* locus in the Database of Genomic Variants (32).

Clinical features of individuals with exonic *GPHN* deletions

Family 1 (proband with ASD diagnosis; 357 kb de novo deletion)

The female proband of European ancestry was conceived naturally to a non-consanguineous 35-year-old (yro) mother and 33 yro father. The pregnancy was uncomplicated and the child was delivered at 38 weeks of gestation with a birth weight of 2810 g and length of 47 cm. There are no reported medical or neuropsychiatric conditions in her parents and two older siblings.

During early development, she was noted to be a 'calm' child, with limited movement when laid down. She began walking at 12 months but otherwise had slow motor development and gait issues, which prompted ergotherapy. She also had language delay with no speech at 2 yro, followed by gradual speech

development by age 4. She had episodes of echolalia. Up to 6 years of age, she continued to desire swaddling and had hypersensitivity to light and sound associated with self-injury (head banging, tearing hair). Assessment by a psychologist at 13 yro, which included the Autism Diagnostic Observation Schedule (ADOS) and Autism Diagnostic Interview—Revised (ADI-R), resulted in a diagnosis of high-functioning ASD.

She attended kindergarten for 2 years with an early intervention program teacher, followed by regular elementary and secondary school with the aid of an education assistance worker. She completed a secondary school degree with the exception of mathematics.

Upon examination by a pediatrician at 2 yro and again at 4 yro, no dysmorphism was noted. Chromosomal microarray (Affymetrix 6.0) indicated that she had a deletion at cytoband 14q23.3 (chr14:66,274,499–66,631,750 [hg18]), which was not present in the parents (Figs 2 and 3, Family 1).

Family 2 (proband with ASD diagnosis; 319 kb paternally inherited deletion)

The male proband was conceived naturally to a 28 yro mother and 30 yro father. The proband was born vaginally at 35 weeks gestation with a birth weight of 3133 g and length of 50.8 cm. He was treated for respiratory distress in hospital for 9 days following delivery. Coarctation of the aorta and bicuspid aortic valve were noted on echocardiography performed upon re-admittance to the hospital at 18 days of life, secondary to continued respiratory distress. He had an end-to-end anastomosis procedure at 1 month followed by a coarctation repair with patch annuloplasty at 4 months. Post-treatment echocardiograms have been normal and he remains asymptomatic.

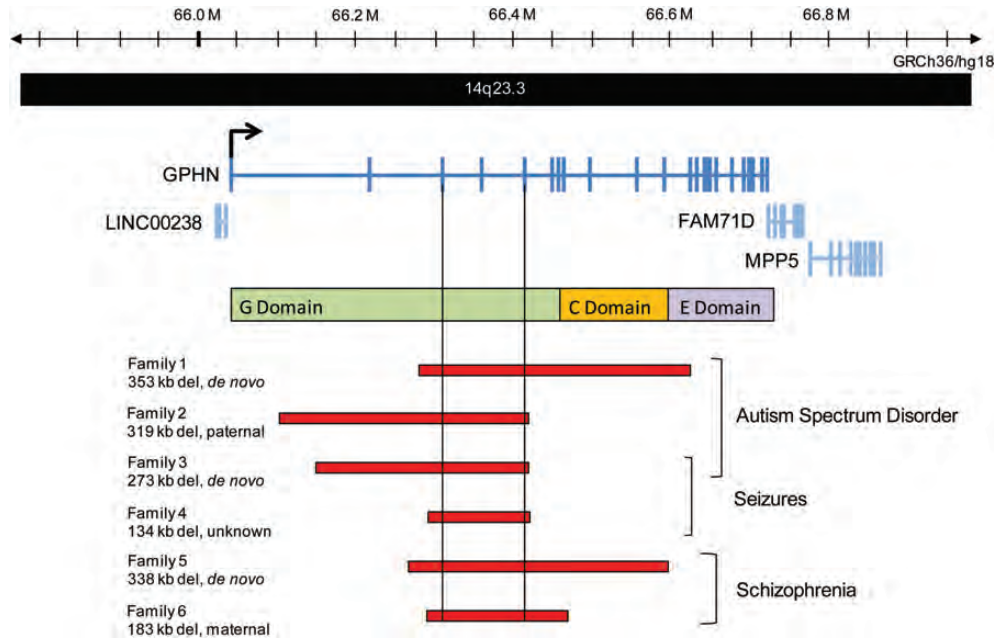


Figure 2. Genomic locations of *GPHN* deletions described in this study. Red bars represent the hemizygous exonic *GPHN* deletions at 14q23.3 detected in the index probands of the six families presented in this paper. Information about transcript isoforms and genomic co-ordinates corresponds to human genome Build 36 (hg18). The common region of overlap of the six deletions encompasses exons 3–5, which correspond to the G-domain of the gephyrin protein. Coordinates (hg18) of the deletions observed in control individuals are chr14:66,055,080–66,882,227, chr14:66,153,552–66,267,833 and chr14:66,287,336–66,355,274.

Table 1. Genetic and phenotypic details of probands with *GPHN* deletions

Family (proband sex)	Genotype <i>GPHN</i> deletion extent, hg18 (size)	Exons affected	Inheritance	Phenotype Diagnosis	Dysmorphic features	Speech delay	Motor delay	Other
Family 1 (female)	chr14:66,274,499–66,631,750 (357 kb)	3–12	<i>De novo</i>	ASD	N	Y	Y	–
Family 2 (male)	chr14:66,102,556–66,421,440 (319 kb)	2–5	Paternal	ASD	N	N	N	Coarctation of aorta
Family 3 (male)	chr14:66,148,602–66,421,440 (273 kb)	2–5	<i>De novo</i>	ASD and seizures	N/A	Y	N	Intellectual disability
Family 4 (male)	chr14:66,287,215–66,421,440 (134 kb)	3–5	Unknown	Seizures	N/A	N/A	N/A	–
Family 5 (male)	chr14:66,267,488–66,605,185 (338 kb)	3–11	<i>De novo</i>	Schizophrenia	N	N	N	–
Family 6 (male)	chr14:66,287,324–66,470,381 (183 kb)	3–8	Maternal	Schizophrenia	N/A	N	N	Learning difficulties

ASD, autism spectrum disorder; N/A, not assessed.

He exhibited mild global developmental delay early in life, with walking at 16 months and speech emergence at 15–16 months. By the age of 3 years, he could speak in two word sentences. At age 6, he was diagnosed with ASD by a child psychologist. In particular, he had difficulties with socialization and repetitive behaviors (specifically throat clearing and tics). The proband experienced academic difficulties and required a modified program in preschool and kindergarten. By 9 years of age, he had graduated from this program and received no additional special education.

Upon examination by a clinical geneticist at 6 years 8 months, no significant dysmorphism was noted. Chromosomal microarray (Agilent 44K) indicated he had a deletion at cytoband 14q23.3 (chr14:66,102,556–66,421,440 [hg18]), which was paternally inherited, but not present in his siblings (Figs 2 and 3, Family 2).

The proband is the third of four children of non-consanguineous parents (Fig. 3, Family 2). He has one sister with anxiety, another sister with speech delay and

hyperactivity, a third sister with head-banging behaviors and a maternal half-brother with bipolar disorder. His mother has been diagnosed with depression and anxiety and was noted to have speech difficulties in school. In the maternal extended family, there are individuals with additional psychological concerns. The father is apparently healthy with normal intelligence, but has some challenges with socialization. There is significant psychiatric illness in the paternal extended family.

Family 3 (proband with diagnosis of ASD and seizures; 273 kb de novo deletion)

The male proband was conceived naturally to a 36 yro mother and 40 yro father. The pregnancy was uncomplicated and the proband was delivered naturally with a birth weight of 3714 g and length of 48 cm. He crawled at 7 months and walked at 15 months. Developmental delay was first noticed by parents at age 2, 2 months after a serious encephalitic illness that required hospitalization for 3 days. Cyclical seizures began at the time of this illness and recurred until age 6 and

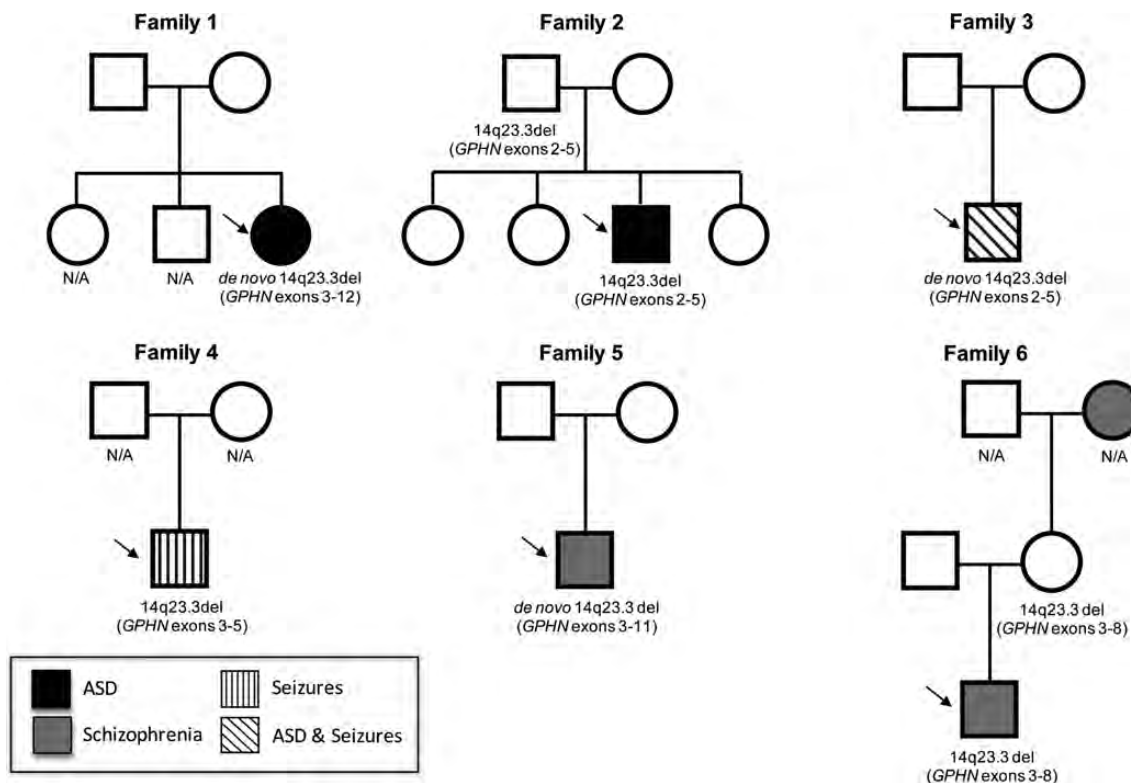


Figure 3. Pedigrees of probands with *GPHN* deletions. Squares and circles denote males and females, respectively. Arrow indicates the index proband in each family. 'N/A' represents individuals from whom DNA was not available for testing. All other individuals were assayed for deletions at the *GPHN* locus using microarray, FISH or qPCR.

subsequently he remained seizure free without anti-convulsant treatment. He exhibited speech and language delay and did not talk until approximately age 4. He was diagnosed with ASD (pervasive developmental disorder) at age 4 by a child psychologist on the basis of behavioral assessments provided by parents, teachers and therapists. He was diagnosed with ID a few years later by a school psychologist. He continues to have behavioral issues including anxiety, OCD, tics and impulsive, sometimes aggressive behaviors. He talks to himself frequently, and has trouble concentrating and sitting still.

The proband attended early intervention therapy from age 3–6. He has received special education and/or tutoring throughout school as well as speech therapy and occupational therapy. He is currently in tenth grade. He has had physical therapy in the past for toe walking.

The proband tested negative for fragile X and had normal results from magnetic resonance imaging and computed tomography brain scans and electroencephalography. At 15 years of age, he was referred for further genetic testing. Chromosomal microarray (Agilent 180K) indicated he had a deletion at cytoband 14q23.3 (chr14:66,148,602–66,421,440 [hg18]) (Fig. 2, Family 3). Neither parent had the deletion when tested by FISH (Fig. 3, Family 3). After detection of the *de novo* hemizygous exonic deletion in the proband, clinical metabolic testing for molybdenum cofactor (MoCo) deficiency was performed and the results were negative (Supplementary Material, Table S9). The testing measured urine levels of uric acid, xanthine, hypoxanthine and uracil and serum levels of molybdenum and uric acid.

Family 4 (proband with diagnosis of seizures; 134 kb deletion)
 The male proband was examined at 5 years of age for seizures of unknown type or duration. Clinical chromosomal microarray (Agilent 44K) indicated he had a deletion at cytoband 14q23.3 (chr14:66,287,215–66,421,440 [hg18]) (Fig. 2, Family 4). This individual was lost to follow-up and detailed clinical information was not obtained. Samples from the parents were not available for testing (Fig. 3, Family 4).

Family 5 (proband with schizophrenia diagnosis; 338 kb *de novo* deletion)

The male proband was conceived naturally to non-consanguineous parents, a 29 yro mother and 36 yro father of European ancestry. There was no evidence of developmental delay or autistic features. The proband completed tenth grade with no reported difficulties, leaving school at age 17 years to work.

At 23 years of age, he began to have increasing anxiety, pre-occupation and paranoia that responded well to a few months of treatment with chlorpromazine. At age 24 years, he was admitted to a hospital for schizophrenia. Neuropsychological testing using the Wechsler Adult Intelligence Scale (WAIS) revealed a Full Scale IQ of 92. He improved with electroconvulsive therapy, and was discharged after 2 months. Following two additional hospitalizations, he has been relatively stable on a standard antipsychotic medication regimen with an adjunct antidepressant for many years. A detailed psychiatric assessment, including use of a modified version of Structured Clinical Interviews for DSM-III-R for Axis I disorders,

confirmed a research diagnosis of chronic schizophrenia (33,34). He has no history of seizures and there is no known history of neuropsychiatric illness or seizures in his parents or siblings. There is a significant history of schizophrenia in the paternal extended family.

There was no significant dysmorphology noted on examination as an adult by a psychiatric geneticist. Research chromosomal microarray (Affymetrix 6.0) indicated he had a deletion at cytoband 14q23.3 (chr14:66,267,488–66,605,185 [hg18]) (Fig. 2, Family 5). Neither parent had the deletion when tested by Affymetrix 6.0 microarray and qPCR (Fig. 3, Family 5).

Family 6 (proband with schizophrenia diagnosis; 183 kb maternally inherited deletion)

The male proband of European ancestry was recruited into the International Schizophrenia Consortium (ISC) study (30) at age 26 yro. He had normal early milestones. During his schooling, he had poor marks and left early after 8 years of education. The first onset of psychiatric symptoms started at 21 years with changes in his behavior, 3 months before he attended the National Service. After finishing the service, he appeared withdrawn, talked little and claimed that ‘things were different’ and that his genitals were changing. At age 22, he was seen by a psychiatrist after reporting he heard voices laughing at him and people were looking at him. He believed that he was being poisoned. He was subsequently treated with long-acting injectable antipsychotic medication for the 3 years prior to recruitment into the ISC study. He remained in a chronic condition, with similar delusions, anhedonia (loss of interest in pleasurable activities) and severe lethargy.

Chromosomal microarray testing (Affymetrix 6.0) as part of the ISC study indicated that he had a deletion at cytoband 14q23.3 (chr14:66,287,324–66,470,381 [hg18]) (Fig. 2, Family 6). Microarray testing showed the deletion to be present in the mother, who was reported to be unaffected (Fig. 3, Family 6). DNA was not available for testing from the proband’s maternal grandmother, who reportedly also had schizophrenia.

GPHN sequencing and mutation screening

To search for smaller sequence-level point or insertion/deletion (indel) mutations in *GPHN*, we examined all coding exons and intron–exon splice sites of the gene in 558 unrelated ASD and 95 unrelated schizophrenia cases using Sanger and next-generation exome sequencing approaches. Missense coding variants were identified at six positions (Supplementary Material, Tables S10 and S11), three of which (c.2041(A>C) [p.Gln307Pro], c.2853(G>A) [p.Gly578Ser] and c.3210(G>A) [p.Asp697Asn]) were not found in the NCBI database of known SNPs (dbSNP build 137). Each of these variants occurred in single ASD cases. The glutamine (hg18 chr14:66,501,752), glycine (hg18 chr14:66,658,831) and aspartate (hg18 chr14:66,716,057) at these positions were conserved across all 15 species with sequence data reported in the UCSC genome browser and were not observed in exome sequence data from > 5000 individuals from the NIH National Heart, Lung and Blood Institute (NHLBI) project (<http://evs.gs.washington.edu/EVS/>). These changes

were also predicted to be likely damaging by the Polyphen and/or SIFT software programs. However, the clinical relevance of these changes is unclear given their presence in unaffected relatives—in the father of the proband with Gln307Pro, in the father and brother of the proband with Gly578Ser, and in the grandmother of the proband with Asp697Asn. DNA was not available for testing from the parents of the ASD proband with the Asp697Asn variant.

DISCUSSION

Here, we present clinical and molecular characterization of six unrelated index cases possessing rare *de novo* or inherited microdeletions overlapping the *GPHN* gene at 14q23.3. Perhaps the most compelling evidence for the pathogenicity of the deletions is the fact that they arose as *de novo* events in the probands in three of the five families for whom DNA from both parents was available for inheritance testing. The deletions in the probands in Families 2 and 6 were inherited from a parent with sub-clinical socialization deficits and an unaffected parent, respectively, suggesting variable expression of structural mutations at this locus.

To our knowledge, this is the first report of hemizygous deletions at the *GPHN* locus in connection with ASD or seizure phenotypes. The deletions in probands from Families 5 and 6 add to previous evidence supporting the involvement of *GPHN* in genetic risk for schizophrenia. The *GPHN* locus was one of the top ranking genetic loci at which runs of homozygosity were significantly over-represented in cases versus controls in a study examining highly penetrant risk loci in schizophrenia (35). In addition, the statistical method Gene Relationships Among Implicated Loci (GRAIL) employed by Raychaudhuri *et al.* pinpointed *GPHN* as a key gene highly likely to play an etiological role in schizophrenia based on its functional relatedness to other genes implicated in risk for the disorder (36).

The common region of overlap across the six deletions encompasses exons 3–5 (Fig. 2), corresponding to the coding segment of the G domain of the gephyrin protein. G-domain trimerization is vital for the formation of the hexagonal gephyrin oligomer scaffolds required for stable GABA receptor clustering in postsynaptic inhibitory neurons (2). Interestingly, abnormally spliced gephyrin mRNA (with no corresponding genomic mutation), lacking several exons corresponding to the G domain, has been isolated in the hippocampus of patients with TLE (8). Due to the missing G-domain exons, these aberrant protein variants were no longer able to form trimers and were observed to act in a dominant-negative manner by interacting with normally spliced gephyrin and impairing its function, as observed by depleted GABA receptor cluster density and reduced GABAergic postsynaptic current amplitudes (8). The authors of this study speculated that cellular stressors such as elevated temperature or alkalosis, which can cause or arise from seizure activity, respectively, might induce exon skipping in *GPHN* mRNA leading to a dominant-negative effect (8). This type of ‘environmentally’ induced mRNA mutation might have an equivalent functional impact to dosage effects of a hemizygous genomic deletion of the underlying *GPHN* locus (as is seen in our six families). However, the situation *in vivo* may

be more complex than that observed *in vitro* due to the multiple isoforms and splice variants of the gene, differences in gephyrin expression across various synapse types and factors affecting the expression levels of the non-deleted allele. Given the high prevalence of epilepsy in ASD (>21% in ASD individuals with an ID and 8% in those without ID) (37), our findings call attention to considering models (38) whereby the effects of seizures may contribute to expression of ASD, instead of being interpreted as associated medical comorbidities.

In addition to its synaptic function in the central nervous system, gephyrin has a more wide-ranging role in peripheral tissues in the synthesis of MoCo (39,40), the catalytically active center of molybdoenzymes (class of molybdenum containing enzymes), whose function is essential for the survival of almost all life forms. Gephyrin exhibits extensive sequence conservation across different species ranging from bacteria to humans, attesting to the strong evolutionary pressure preserving MoCo synthesis (40). To date, there have been two reports of homozygous *GPHN* mutations in humans, both in connection with MoCo deficiency, an extremely rare and sometimes lethal autosomal recessive metabolic disease characterized by untreatable neonatal seizures with opisthotonos, hypotonia, feeding difficulties, facial dysmorphism and ID. Reiss *et al.* (41) identified homozygous deletions, which eliminated exons 2 and 3 resulting in a frameshift after only 21 codons of normal coding sequence and complete loss of protein function, in the last of three affected infants born to Danish first-cousin parents. All three infants exhibited symptoms of severe MoCo deficiency and died within a month after birth. While the vast majority of cases of MoCo deficiency are caused by point mutations in one of two other related genes involved in MoCo biosynthesis, *MOCS1* and *MOCS2* (42), there has been one other case linked to a homozygous point mutation in *GPHN* (43). This D580A missense change was recently reported in a female child (of first cousin parents) of Algerian origin who exhibited a milder MoCo deficiency phenotype when compared with the patients carrying the *GPHN* homozygous deletion (43). The parents, who were carriers of hemizygous *GPHN* mutations, did not exhibit any MoCo deficiency symptoms in either of the two families. We have attempted to see if these parents might have a neuropsychiatric phenotype, but were unable to obtain information.

The severe symptoms of *GPHN* null mutations in humans are consistent with phenotypes observed by Feng *et al.* (39) in *geph*^{-/-} knockout mice embryos that were born in expected numbers without apparent physical abnormalities but died within 1 day of birth. Knockout neonates had breathing difficulties and a heightened startle response, becoming rigid and exhibiting a hyperextended posture when lightly touched. They also had other phenotypic traits similar to human MoCo deficiency patients including myoclonus and feeding difficulties. The authors demonstrated that gephyrin was essential for both glycine receptor clustering and MoCo synthesis. While heterozygous mutant (*geph*^{+/-}) mice were apparently phenotypically normal (39), there is some evidence from other studies for subtle gene dosage effects. The concentration of gephyrin protein was reduced by 50% in *geph*^{+/-} mice (44), and reductions in GABA_A receptor clustering have been observed *in vitro* (but not *in vivo*) in neuronal cultures derived from *geph*^{+/-} animals (45). RNAi experiments

that reduced gephyrin expression by ~50% in mouse hippocampal neurons observed significant reduction in GABA receptor cluster density (46). These findings hint at potential disturbances in synaptic homeostasis in hemizygous *GPHN* mutation carriers. Thus while homozygous *GPHN* mutations abolishing both the synaptic and molybdenum cofactor biosynthetic activity of the protein result in the severe metabolic phenotype of MoCo deficiency, hemizygous deletions reported in this study presumably affect only the synaptic functions of the protein, as can be inferred from the absence of MoCo deficiency symptoms in our patients and in previously reported individuals with such mutations (41).

Our data add to the accumulating evidence highlighting the role of dysfunctional inhibitory signaling with ASD etiology (47). *GPHN* joins the growing list of genetic risk loci evidently shared between ASD and schizophrenia. This intriguing cross-disorder genetic overlap includes reports of very large (>500 kb) rare deletions and/or duplications in both ASD and schizophrenia patients at regions such as 1q21.1 (48,49), 3q29 (50,51), 15q13.3 (49,52), 16p11.2 (53–56), 16p13.11 (57,58), 17q12 (59) and 22q11.2 (60,61). Each of these syndromic microdeletions and microduplications overlaps several genes and the varying neurocognitive traits observed in connection with them could be a consequence of aberrant dosage of any or all of these genes. Higher resolution microarray and sequencing scans have detected smaller ultra-rare single gene CNVs and/or truncating point mutations affecting certain specific genes in both schizophrenia and ASD patient cohorts, such as *NRXN1* (15,19), *SHANK3* (27,28), *CNTNAP2* (62,63), *ASTN2* (64–66), *A2BP1* (67,68), *DPP6* (54,68,69), *DPYD* (70,71), *ZNF804A* (72–74), *GRIN2B* (74,75), *EHMT1* (74,76) and *CSMD3* (77,78) among others. Since several of these genes have crucial roles in the formation and proper function of neuronal synapses, the disruption of complexes and interacting proteins within the synapse proteome is increasingly being recognized as a key etiologic factor in both disorders (16,79–83). Recent research has also highlighted the involvement of CNVs in epilepsy at several of the loci first implicated in ASD and schizophrenia, including 15q13.3, 16p13.11 and 15q11.2 as well as at individual genes such as *CNTNAP2*, *NRXN1* and *SHANK3* (21,29,84,85).

Our finding of different disease states arising from deletions of the same gene is in line with previous reports of several other genetic loci being involved in genetic risk for a range of neurodevelopmental disorders including autism, schizophrenia and epilepsy. For example, these observations of pleiotropic effects of mutations at the same gene are also seen in connection with mutations in pre-synaptic neurexin and in the post-synaptic SHANK scaffolding proteins. Duong *et al.* (21) recently reported variable penetrance and pleiotropy of *NRXN1* mutations within a single family—individuals with hemizygous deletions and point mutations had differing neurodevelopmental phenotypes ranging from ASD and epilepsy to schizophrenia and psychotic disorder. As with these and other CNVs, the variable expression and penetrance of the neurodevelopmental disorder phenotypes associated with structural mutations at the *GPHN* locus could be modulated by other risk alleles, protective genetic modifiers and/or environmental factors. Differences among the translational products, expression levels and stabilities of the pathogenic gephyrin forms, together with the multiple

types of inhibitory receptors potentially affected downstream, could also contribute to the range of observed disorder phenotypes.

Although ASD and schizophrenia exhibit important differences in core phenotypes, age of onset and treatment regimens, there is evidence for a certain degree of overlap of clinical traits (86–89), consistent with the observations of shared genetic risk. The clinical link to ASD is perhaps strongest in childhood-onset schizophrenia (COS) with several studies reporting ASD traits predating the development of psychosis in a sizeable subset of patients with COS (86). There is converging evidence of similar neuronal functional deficits and connectivity impairments being involved in the etiology of both disorders (87). Epidemiological studies have highlighted an increased ASD risk in children with a familial history of schizophrenia (90,91). There is also emerging evidence of comorbidity and functional links between epilepsy and ASD (37,92), and between epilepsy and schizophrenia (93).

Our results enhance understanding of the *GPHN* mutation spectrum and will aid in the interpretation of clinical genetic testing in neurodevelopmental disorders. The molecular findings and clinical case descriptions provided here will serve as a foundation for future studies elucidating a more comprehensive correlation of DNA, mRNA and protein variants at this locus with the resulting neurodevelopmental clinical outcomes. Building from the work of Forstera *et al.* (8), our findings potentially link genomic CNV dosage effects and epilepsy-induced mRNA dysregulation to *GPHN*, possibly providing a sought after model to explore gene–environment interactions in neuropsychiatric disease.

MATERIALS AND METHODS

Study subjects

The patient cohort inspected for *GPHN* deletions in this study was composed of 1158 Canadian patients with ASD, 72 Austrian patients with ASD, 450 Canadian patients with schizophrenia and a clinical data set of 3704 individuals with primary diagnoses of ASD and/or seizure disorders that were referred to for clinical microarray testing at the Mayo Clinic cytogenetics laboratory. The Canadian and Austrian ASD patients met criteria for ASD diagnosis on the basis of the Autism Diagnostic Interview-Revised (ADI-R) and/or the Autism Diagnostic Observation Schedule (ADOS) (94). The Canadian ASD cohort was recruited as described previously (25). The Canadian schizophrenia sample is composed of patients from two cohorts: a previous genome-wide linkage study involving extended pedigrees of northern European ancestry in which schizophrenic illness appeared to be segregating in a unilineal, autosomal dominant-like manner (34) and a community-based catchment population of schizophrenia (95). The comprehensive clinical assessments performed on these cohorts are described in detail elsewhere (33). All samples were approved for inclusion in the study by the appropriate local research ethics boards. The *GPHN* region was inspected for CNVs in microarray data analyzed by our group (54,66,69,96) from 21 345 population-based adult controls genotyped with high-resolution arrays (Supplementary Material, Table S8) and published data from 2493 controls

genotyped at the University of Washington (97) and from 3181 controls analyzed by the International Schizophrenia Consortium (30).

Microarray genotyping and CNV analysis

DNA samples from probands of Families 2, 3 and 4 were genotyped at the Mayo Clinic employing either the Agilent ISCA 44 K or 180 K microarrays (98). CNV analysis was performed using the DNA Analytics software (Agilent) with clinically validated settings. CNVs were assessed for reporting that involved at least four consecutive probes for the 44 K array and at least five probes for the 180 K array. For the proband of Family 1 and the proband and parents of Family 5, genotyping was performed at The Centre for Applied Genomics (Toronto, Canada) using the Affymetrix GeneChip SNP 6.0 following standard protocols provided by the manufacturer. CNV calling was performed using a previously described multi-algorithm approach (66,99) incorporating Birdsuite, iPattern & Genotyping Console. Subsequent analyses focused on those CNVs spanning five or more array probes and detected by at least two algorithms. We have shown previously that such variants exhibit very high positive validation rates (> 95%) using independent experimental approaches such as qPCR and FISH (54,66,69,100). Genotyping and CNV analysis of DNA samples from Family 6 (using the Affymetrix 6.0 platform) were performed as part of the International Schizophrenia Consortium study as described elsewhere (30).

CNV validation and inheritance testing

Validation of deletions in probands from Families 2, 3 and 4, and in their family members from whom DNA was available was conducted by FISH. CNV validation in probands from Families 1, 5 and 6, and in their family members from whom DNA was available was performed using SYBR-Green-based real-time qPCR, for which two independent primer pairs were designed at the *GPHN* locus and at the *FOXP2* locus on chromosome 7 as a diploid control. The parentage of the proband in Family 5 with the *de novo GPHN* deletion was confirmed by calculating the Mendelian error rate of Affymetrix SNP 6.0 array genotypes using the PLINK tool set (101). Parentage of the proband with a *de novo* deletion in Family 1 was confirmed using the AmpFISTR Identifier PCR Amplification Kit (Life Technologies, Foster City, CA, USA) using the manufacturer's instructions. Briefly, the kit employs a short tandem repeat multiplex assay that amplifies 15 tetranucleotide repeat loci and the Amelogenin gender determining marker in a single PCR reaction. Samples were run on an AB 3100 Genetic Analyzer using POP4, dye set G5 and analyzed in GeneMapper v3.7.

Sequencing and mutation screening methods

All 23 coding exons of *GPHN* isoform 1 (NM_020806.4) and the intron–exon splice sites were sequenced in 280 unrelated Canadian probands with ASD and 95 probands with schizophrenia using standard PCR-based Sanger sequencing. Primers were designed using Primer3 software v. 0.4.0 (<http://frodo.wi.mit.edu/primer3>). All primers used for Sanger sequencing are listed in Supplementary Material, Table S12.

Sequencing of amplified products was performed using the ABI 3730XL capillary sequencer (Applied Biosystems), followed by variant detection utilizing the SeqScape software from Applied Biosystems.

The *GPHN* locus was also examined for coding sequence variants in next-generation exome sequencing data from 278 additional Canadian ASD probands, distinct from those screened by Sanger sequencing. After target enrichment utilizing the Agilent SureSelect V3 50 Mb Human All Exon kit (Agilent Technologies, Santa Clara, CA, USA), paired-end sequencing was conducted on Life Technologies SOLiD4 and SOLiD5500XL (Life Technologies) platforms. Protocols for sequencing and target capture followed specifications from the manufacturers. The generated paired end reads were mapped to the reference human genome (UCSC hg19 build) using BFAST. MarkDuplicates (Picard tools version 1.35; <http://picard.sourceforge.net>) was used to remove duplicate paired end reads and the subsequent alignments were refined using local realignment in colorspace implemented in SRMA version 0.1.15. GATK version 1.1.28 was used for the calling of indels and SNPs.

Those novel non-synonymous variants detected by Sanger and NGS exome sequencing, which were not previously reported in the SNP database (dbSNP) build 137, were validated bi-directionally using Sanger re-sequencing in the case and in samples from both parents, when available.

SUPPLEMENTARY MATERIAL

Supplementary Material is available at *HMG* online.

ACKNOWLEDGEMENTS

We thank the patients and their families and the referring clinicians for participating in this study and staff of The Centre for Applied Genomics for their excellent technical assistance.

Conflict of Interest statement. S.W.S. is on the Scientific Advisory Board of Population Diagnostics, a U.S. company that could use data from this study. The other authors declare that they have no competing interests.

FUNDING

This work was supported by grants from NeuroDevNet, the University of Toronto McLaughlin Centre, Genome Canada and the Ontario Genomics Institute, the Canadian Institutes for Health Research (CIHR), the Canadian Institute for Advanced Research, the Canada Foundation for Innovation, the Government of Ontario, Autism Speaks, The Hospital for Sick Children Foundation and ÖNB Jubiläumsfonds (Project Number:13226). The control data sets were obtained, along with permission for use, from the database of Genotype and Phenotype database (dbGaP) found at <http://www.ncbi.nlm.nih.gov/gap> through accession numbers phs000143.v1.p1 (Starr County Study), phs000091.v2.p1 (GENEVA NHS/HPFS study) and phs000169.v1.p1 (HABC study). A.C.L. holds a NeuroDevNet doctoral fellowship. A.P. was supported by a fellowship from the CIHR Autism Training Program.

A.S.B. holds the Canada Research Chair in Schizophrenia Genetics and Genomic Disorders and received funding support from CIHR grants MOP-89066 and MOP-111238. S.W.S. holds the GlaxoSmithKline-CIHR Chair in Genome Sciences at the University of Toronto and The Hospital for Sick Children.

REFERENCES

- Tretter, V., Mukherjee, J., Maric, H.M., Schindelin, H., Sieghart, W. and Moss, S.J. (2012) Gephyrin, the enigmatic organizer at GABAergic synapses. *Front. Cell Neurosci.*, **6**, 23.
- Fritschy, J.M., Harvey, R.J. and Schwarz, G. (2008) Gephyrin: where do we stand, where do we go? *Trends Neurosci.*, **31**, 257–264.
- Prior, P., Schmitt, B., Grenningloh, G., Pribilla, I., Multhaup, G., Beyreuther, K., Maulet, Y., Werner, P., Langosch, D., Kirsch, J. *et al.* (1992) Primary structure and alternative splice variants of gephyrin, a putative glycine receptor-tubulin linker protein. *Neuron*, **8**, 1161–1170.
- Kirsch, J., Wolters, I., Triller, A. and Betz, H. (1993) Gephyrin antisense oligonucleotides prevent glycine receptor clustering in spinal neurons. *Nature*, **366**, 745–748.
- Essrich, C., Lorez, M., Benson, J.A., Fritschy, J.M. and Luscher, B. (1998) Postsynaptic clustering of major GABAA receptor subtypes requires the gamma 2 subunit and gephyrin. *Nat. Neurosci.*, **1**, 563–571.
- Fang, M., Shen, L., Yin, H., Pan, Y.M., Wang, L., Chen, D., Xi, Z.Q., Xiao, Z., Wang, X.F. and Zhou, S.N. (2011) Downregulation of gephyrin in temporal lobe epilepsy neurons in humans and a rat model. *Synapse*, **65**, 1006–1014.
- Kumar, S.S. and Buckmaster, P.S. (2006) Hyperexcitability, interneurons, and loss of GABAergic synapses in entorhinal cortex in a model of temporal lobe epilepsy. *J. Neurosci.*, **26**, 4613–4623.
- Forstera, B., Belaidi, A.A., Juttner, R., Bernert, C., Tsokos, M., Lehmann, T.N., Horn, P., Dehnicke, C., Schwarz, G. and Meier, J.C. (2010) Irregular RNA splicing curtails postsynaptic gephyrin in the cornu ammonis of patients with epilepsy. *Brain*, **133**, 3778–3794.
- Poulopoulos, A., Aramuni, G., Meyer, G., Soykan, T., Hoon, M., Papadopoulos, T., Zhang, M., Paarmann, I., Fuchs, C., Harvey, K. *et al.* (2009) Neuroigin 2 drives postsynaptic assembly at perisomatic inhibitory synapses through gephyrin and collybistin. *Neuron*, **63**, 628–642.
- Hoon, M., Soykan, T., Falkenburger, B., Hammer, M., Patrizi, A., Schmidt, K.F., Sassoe-Pognetto, M., Lowel, S., Moser, T., Taschenberger, H. *et al.* (2011) Neuroigin-4 is localized to glycinergic postsynapses and regulates inhibition in the retina. *Proc. Natl Acad. Sci. USA*, **108**, 3053–3058.
- Kang, Y., Zhang, X., Dobie, F., Wu, H. and Craig, A.M. (2008) Induction of GABAergic postsynaptic differentiation by alpha-neurexins. *J. Biol. Chem.*, **283**, 2323–2334.
- Sudhof, T.C. (2008) Neuroigin and neurexins link synaptic function to cognitive disease. *Nature*, **455**, 903–911.
- Reichelt, A.C., Rodgers, R.J. and Clapcote, S.J. (2012) The role of neurexins in schizophrenia and autistic spectrum disorder. *Neuropharmacology*, **62**, 1519–1526.
- Jamain, S., Quach, H., Betancur, C., Rastam, M., Colineaux, C., Gillberg, I.C., Soderstrom, H., Giros, B., Leboyer, M., Gillberg, C. *et al.* (2003) Mutations of the X-linked genes encoding neuroigin NLGN3 and NLGN4 are associated with autism. *Nat. Genet.*, **34**, 27–29.
- Szatmari, P., Paterson, A.D., Zwaigenbaum, L., Roberts, W., Brian, J., Liu, X.Q., Vincent, J.B., Skaug, J.L., Thompson, A.P., Senman, L. *et al.* (2007) Mapping autism risk loci using genetic linkage and chromosomal rearrangements. *Nat. Genet.*, **39**, 319–328.
- Guilmatre, A., Dubourg, C., Mosca, A.L., Legallie, S., Goldenberg, A., Drouin-Garraud, V., Layet, V., Rosier, A., Briault, S., Bonnet-Brilhault, F. *et al.* (2009) Recurrent rearrangements in synaptic and neurodevelopmental genes and shared biologic pathways in schizophrenia, autism, and mental retardation. *Arch. Gen. Psychiatry*, **66**, 947–956.
- Gauthier, J., Siddiqui, T., Huashan, P., Yokomaku, D., Hamdan, F., Champagne, N., Lapointe, M., Spiegelman, D., Noreau, A., Lafrenière, R. *et al.* (2011) Truncating mutations in NRXN2 and NRXN1 in autism spectrum disorders and schizophrenia. *Hum. Genet.*, **130**, 563–573.

18. Vaags, A.K., Lionel, A.C., Sato, D., Goodenberger, M., Stein, Q.P., Curran, S., Ogilvie, C., Ahn, J.W., Drmic, I., Senman, L. *et al.* (2012) Rare deletions at the neurexin 3 locus in autism spectrum disorder. *Am. J. Hum. Genet.*, **90**, 133–141.
19. Rujescu, D., Ingason, A., Cichon, S., Pietilainen, O.P., Barnes, M.R., Touloupoulou, T., Picchioni, M., Vassos, E., Ettinger, U., Bramon, E. *et al.* (2009) Disruption of the neurexin 1 gene is associated with schizophrenia. *Hum. Mol. Genet.*, **18**, 988–996.
20. Sun, C., Cheng, M.C., Qin, R., Liao, D.L., Chen, T.T., Koong, F.J., Chen, G. and Chen, C.H. (2011) Identification and functional characterization of rare mutations of the neuroligin-2 gene (NLGN2) associated with schizophrenia. *Hum. Mol. Genet.*, **20**, 3042–3051.
21. Duong, L., Klitten, L.L., Moller, R.S., Ingason, A., Jakobsen, K.D., Skjold, C., Didriksen, M., Hjalgrim, H., Werge, T. and Tommerup, N. (2012) Mutations in NRXN1 in a family multiply affected with brain disorders: NRXN1 mutations and brain disorders. *Am. J. Med. Genet. B. Neuropsychiatr. Genet.*, **159B**, 354–358.
22. Kalscheuer, V.M., Musante, L., Fang, C., Hoffmann, K., Fuchs, C., Carta, E., Deas, E., Venkateswarlu, K., Menzel, C., Ullmann, R. *et al.* (2009) A balanced chromosomal translocation disrupting ARHGEF9 is associated with epilepsy, anxiety, aggression, and mental retardation. *Hum. Mutat.*, **30**, 61–68.
23. Lesca, G., Till, M., Labalme, A., Vallee, D., Hugonon, C., Philip, N., Edery, P. and Sanlaville, D. (2011) De novo Xq11.11 microdeletion including ARHGEF9 in a boy with mental retardation, epilepsy, macrosomia, and dysmorphic features. *Am. J. Med. Genet. A*, **155A**, 1706–1711.
24. Shimojima, K., Sugawara, M., Shichiji, M., Mukaida, S., Takayama, R., Imai, K. and Yamamoto, T. (2011) Loss-of-function mutation of collybistin is responsible for X-linked mental retardation associated with epilepsy. *J. Hum. Genet.*, **56**, 561–565.
25. Sato, D., Lionel, A.C., Leblond, C.S., Prasad, A., Pinto, D., Walker, S., O'Connor, I., Russell, C., Drmic, I.E., Hamdan, F.F. *et al.* (2012) SHANK1 deletions in males with autism spectrum disorder. *Am. J. Hum. Genet.*, **90**, 879–887.
26. Berkel, S., Marshall, C.R., Weiss, B., Howe, J., Roeth, R., Moog, U., Endris, V., Roberts, W., Szatmari, P., Pinto, D. *et al.* (2010) Mutations in the SHANK2 synaptic scaffolding gene in autism spectrum disorder and mental retardation. *Nat. Genet.*, **42**, 489–491.
27. Durand, C.M., Betancur, C., Boeckers, T.M., Bockmann, J., Chaste, P., Fauchereau, F., Nygren, G., Rastam, M., Gillberg, I.C., Anckarsater, H. *et al.* (2007) Mutations in the gene encoding the synaptic scaffolding protein SHANK3 are associated with autism spectrum disorders. *Nat. Genet.*, **39**, 25–27.
28. Gauthier, J., Champagne, N., Lafreniere, R.G., Xiong, L., Spiegelman, D., Brustein, E., Lapointe, M., Peng, H., Cote, M., Noreau, A. *et al.* (2010) De novo mutations in the gene encoding the synaptic scaffolding protein SHANK3 in patients ascertained for schizophrenia. *Proc. Natl Acad. Sci. USA*, **107**, 7863–7868.
29. Lesca, G., Rudolf, G., Labalme, A., Hirsch, E., Arzimanoglou, A., Genton, P., Motte, J., de Saint Martin, A., Valenti, M.P., Boulay, C. *et al.* (2012) Epileptic encephalopathies of the Landau-Kleffner and continuous spike and waves during slow-wave sleep types: genomic dissection makes the link with autism. *Epilepsia*, **53**, 1526–1538.
30. International Schizophrenia Consortium. (2008) Rare chromosomal deletions and duplications increase risk of schizophrenia. *Nature*, **455**, 237–241.
31. Kearney, H.M., Thorland, E.C., Brown, K.K., Quintero-Rivera, F. and South, S.T. (2011) American College of Medical Genetics standards and guidelines for interpretation and reporting of postnatal constitutional copy number variants. *Genet. Med.*, **13**, 680–685.
32. Iafrate, A.J., Feuk, L., Rivera, M.N., Listewnik, M.L., Donahoe, P.K., Qi, Y., Scherer, S.W. and Lee, C. (2004) Detection of large-scale variation in the human genome. *Nat. Genet.*, **36**, 949–951.
33. Bassett, A.S., Collins, E.J., Nuttall, S.E. and Honer, W.G. (1993) Positive and negative symptoms in families with schizophrenia. *Schizophr. Res.*, **11**, 9–19.
34. Brzustowicz, L.M., Hodgkinson, K.A., Chow, E.W., Honer, W.G. and Bassett, A.S. (2000) Location of a major susceptibility locus for familial schizophrenia on chromosome 1q21-q22. *Science*, **288**, 678–682.
35. Lencz, T., Lambert, C., DeRosse, P., Burdick, K.E., Morgan, T.V., Kane, J.M., Kucherlapati, R. and Malhotra, A.K. (2007) Runs of homozygosity reveal highly penetrant recessive loci in schizophrenia. *Proc. Natl Acad. Sci. USA*, **104**, 19942–19947.
36. Raychaudhuri, S., Plenge, R.M., Rossin, E.J., Ng, A.C., Purcell, S.M., Sklar, P., Scolnick, E.M., Xavier, R.J., Altshuler, D. and Daly, M.J. (2009) Identifying relationships among genomic disease regions: predicting genes at pathogenic SNP associations and rare deletions. *PLoS Genet.*, **5**, e1000534.
37. Amiet, C., Gourfinkel-An, I., Bouzamondo, A., Tordjman, S., Baulac, M., Lechat, P., Mottron, L. and Cohen, D. (2008) Epilepsy in autism is associated with intellectual disability and gender: evidence from a meta-analysis. *Biol. Psychiatry*, **64**, 577–582.
38. Rubenstein, J.L. and Merzenich, M.M. (2003) Model of autism: increased ratio of excitation/inhibition in key neural systems. *Genes Brain Behav.*, **2**, 255–267.
39. Feng, G., Tintrup, H., Kirsch, J., Nichol, M.C., Kuhse, J., Betz, H. and Sanes, J.R. (1998) Dual requirement for gephyrin in glycine receptor clustering and molybdoenzyme activity. *Science*, **282**, 1321–1324.
40. Stallmeyer, B., Schwarz, G., Schulze, J., Nerlich, A., Reiss, J., Kirsch, J. and Mendel, R.R. (1999) The neurotransmitter receptor-anchoring protein gephyrin reconstitutes molybdenum cofactor biosynthesis in bacteria, plants, and mammalian cells. *Proc. Natl Acad. Sci. USA*, **96**, 1333–1338.
41. Reiss, J., Gross-Hardt, S., Christensen, E., Schmidt, P., Mendel, R.R. and Schwarz, G. (2001) A mutation in the gene for the neurotransmitter receptor-clustering protein gephyrin causes a novel form of molybdenum cofactor deficiency. *Am. J. Hum. Genet.*, **68**, 208–213.
42. Reiss, J. and Hahnwald, R. (2011) Molybdenum cofactor deficiency: Mutations in GPHN, MOCS1, and MOCS2. *Hum. Mutat.*, **32**, 10–18.
43. Reiss, J., Lenz, U., Aquaviva-Bourdain, C., Joriot-Chekaf, S., Mention-Mulliez, K. and Holder-Espinasse, M. (2011) A GPHN point mutation leading to molybdenum cofactor deficiency. *Clin. Genet.*, **80**, 598–599.
44. Kneussel, M., Brandstatter, J.H., Laube, B., Stahl, S., Muller, U. and Betz, H. (1999) Loss of postsynaptic GABA(A) receptor clustering in gephyrin-deficient mice. *J. Neurosci.*, **19**, 9289–9297.
45. Fischer, F., Kneussel, M., Tintrup, H., Haverkamp, S., Rauen, T., Betz, H. and Wassle, H. (2000) Reduced synaptic clustering of GABA and glycine receptors in the retina of the gephyrin null mutant mouse. *J. Comp. Neurol.*, **427**, 634–648.
46. Jacob, T.C., Bogdanov, Y.D., Magnus, C., Saliba, R.S., Kittler, J.T., Haydon, P.G. and Moss, S.J. (2005) Gephyrin regulates the cell surface dynamics of synaptic GABAA receptors. *J. Neurosci.*, **25**, 10469–10478.
47. Coghlan, S., Horder, J., Inkster, B., Mendez, M.A., Murphy, D.G. and Nutt, D.J. (2012) GABA system dysfunction in autism and related disorders: from synapse to symptoms. *Neurosci. Biobehav. Rev.*, **36**, 2044–2055.
48. Brunetti-Pierri, N., Berg, J.S., Scaglia, F., Belmont, J., Bacino, C.A., Sahoo, T., Lalani, S.R., Graham, B., Lee, B., Shinawi, M. *et al.* (2008) Recurrent reciprocal 1q21.1 deletions and duplications associated with microcephaly or macrocephaly and developmental and behavioral abnormalities. *Nat. Genet.*, **40**, 1466–1471.
49. Stefansson, H., Rujescu, D., Cichon, S., Pietilainen, O.P., Ingason, A., Steinberg, S., Fossdal, R., Sigurdsson, E., Sigmundsson, T., Buizer-Voskamp, J.E. *et al.* (2008) Large recurrent microdeletions associated with schizophrenia. *Nature*, **455**, 232–236.
50. Willatt, L., Cox, J., Barber, J., Cabanas, E.D., Collins, A., Donnai, D., FitzPatrick, D.R., Maher, E., Martin, H., Parnau, J. *et al.* (2005) 3q29 microdeletion syndrome: clinical and molecular characterization of a new syndrome. *Am. J. Hum. Genet.*, **77**, 154–160.
51. Mulle, J.G., Dodd, A.F., McGrath, J.A., Wolyniec, P.S., Mitchell, A.A., Shetty, A.C., Sobreira, N.L., Valle, D., Rudd, M.K., Satten, G. *et al.* (2010) Microdeletions of 3q29 confer high risk for schizophrenia. *Am. J. Hum. Genet.*, **87**, 229–236.
52. Ben-Shachar, S., Lanpher, B., German, J.R., Qasaymeh, M., Potocki, L., Nagamani, S.C., Franco, L.M., Malphrus, A., Bottenfield, G.W., Spence, J.E. *et al.* (2009) Microdeletion 15q13.3: a locus with incomplete penetrance for autism, mental retardation, and psychiatric disorders. *J. Med. Genet.*, **46**, 382–388.
53. Weiss, L.A., Shen, Y., Korn, J.M., Arking, D.E., Miller, D.T., Fossdal, R., Saemundsen, E., Stefansson, H., Ferreira, M.A., Green, T. *et al.* (2008) Association between microdeletion and microduplication at 16p11.2 and autism. *N. Engl. J. Med.*, **358**, 667–675.

54. Marshall, C.R., Noor, A., Vincent, J.B., Lionel, A.C., Feuk, L., Skaug, J., Shago, M., Moessner, R., Pinto, D., Ren, Y. *et al.* (2008) Structural variation of chromosomes in autism spectrum disorder. *Am. J. Hum. Genet.*, **82**, 477–488.
55. Fernandez, B.A., Roberts, W., Chung, B., Weksberg, R., Meyn, S., Szatmari, P., Joseph-George, A.M., Mackay, S., Whitten, K., Noble, B. *et al.* (2010) Phenotypic spectrum associated with de novo and inherited deletions and duplications at 16p11.2 in individuals ascertained for diagnosis of autism spectrum disorder. *J. Med. Genet.*, **47**, 195–203.
56. McCarthy, S.E., Makarov, V., Kirov, G., Addington, A.M., McClellan, J., Yoon, S., Perkins, D.O., Dickel, D.E., Kusenda, M., Krastoshevsky, O. *et al.* (2009) Microduplications of 16p11.2 are associated with schizophrenia. *Nat. Genet.*, **41**, 1223–1227.
57. Ingason, A., Rujescu, D., Cichon, S., Sigurdsson, E., Sigmundsson, T., Pietilainen, O.P., Buizer-Voskamp, J.E., Strengman, E., Francks, C., Muglia, P. *et al.* (2011) Copy number variations of chromosome 16p13.1 region associated with schizophrenia. *Mol. Psychiatry*, **16**, 17–25.
58. Ullmann, R., Turner, G., Kirchhoff, M., Chen, W., Tonge, B., Rosenberg, C., Field, M., Vianna-Morgante, A.M., Christie, L., Krepischi-Santos, A.C. *et al.* (2007) Array CGH identifies reciprocal 16p13.1 duplications and deletions that predispose to autism and/or mental retardation. *Hum. Mutat.*, **28**, 674–682.
59. Moreno-De-Luca, D., Mulle, J.G., Kaminsky, E.B., Sanders, S.J., Myers, S.M., Adam, M.P., Pakula, A.T., Eisenhauer, N.J., Uhas, K., Weik, L. *et al.* (2010) Deletion 17q12 is a recurrent copy number variant that confers high risk of autism and schizophrenia. *Am. J. Hum. Genet.*, **87**, 618–630.
60. Kates, W.R., Antshel, K.M., Fremont, W.P., Shprintzen, R.J., Strunge, L.A., Burnette, C.P. and Higgins, A.M. (2007) Comparing phenotypes in patients with idiopathic autism to patients with velocardiofacial syndrome (22q11 DS) with and without autism. *Am. J. Med. Genet. A*, **143A**, 2642–2650.
61. Bassett, A.S. and Chow, E.W. (2008) Schizophrenia and 22q11.2 deletion syndrome. *Curr. Psychiatry Rep.*, **10**, 148–157.
62. Bakkaloglu, B., O’Roak, B.J., Louvi, A., Gupta, A.R., Abelson, J.F., Morgan, T.M., Chawarska, K., Klin, A., Ercan-Sencicek, A.G., Stillman, A.A. *et al.* (2008) Molecular cytogenetic analysis and resequencing of contactin associated protein-like 2 in autism spectrum disorders. *Am. J. Hum. Genet.*, **82**, 165–173.
63. Friedman, J.L., Vrijenhoek, T., Markx, S., Janssen, I.M., van der Vliet, W.A., Faas, B.H., Knoers, N.V., Cahn, W., Kahn, R.S., Edelmann, L. *et al.* (2008) CNTNAP2 gene dosage variation is associated with schizophrenia and epilepsy. *Mol. Psychiatry*, **13**, 261–266.
64. Vrijenhoek, T., Buizer-Voskamp, J.E., van der Stelt, I., Strengman, E., Sabatti, C., Geurts van Kessel, A., Brunner, H.G., Ophoff, R.A. and Veltman, J.A. (2008) Recurrent CNVs disrupt three candidate genes in schizophrenia patients. *Am. J. Hum. Genet.*, **83**, 504–510.
65. Glessner, J.T., Wang, K., Cai, G., Korvatska, O., Kim, C.E., Wood, S., Zhang, H., Estes, A., Brune, C.W., Bradfield, J.P. *et al.* (2009) Autism genome-wide copy number variation reveals ubiquitin and neuronal genes. *Nature*, **459**, 569–573.
66. Lionel, A.C., Crosbie, J., Barbosa, N., Goodale, T., Thiruvahindrapuram, B., Rickaby, J., Gazzellone, M., Carson, A.R., Howe, J.L., Wang, Z. *et al.* (2011) Rare copy number variation discovery and cross-disorder comparisons identify risk genes for ADHD. *Sci. Transl. Med.*, **3**, 95ra75.
67. Martin, C.L., Duvall, J.A., Ilkin, Y., Simon, J.S., Arreaza, M.G., Wilkes, K., Alvarez-Retuerto, A., Whichello, A., Powell, C.M., Rao, K. *et al.* (2007) Cytogenetic and molecular characterization of A2BP1/FOX1 as a candidate gene for autism. *Am. J. Med. Genet. B. Neuropsychiatr. Genet.*, **144B**, 869–876.
68. Xu, B., Roos, J.L., Levy, S., van Rensburg, E.J., Gogos, J.A. and Karayiorgou, M. (2008) Strong association of de novo copy number mutations with sporadic schizophrenia. *Nat. Genet.*, **40**, 880–885.
69. Pinto, D., Pagnamenta, A.T., Klei, L., Anney, R., Merico, D., Regan, R., Conroy, J., Magalhaes, T.R., Correia, C., Abrahams, B.S. *et al.* (2010) Functional impact of global rare copy number variation in autism spectrum disorders. *Nature*, **466**, 368–372.
70. Carter, M.T., Nikkel, S.M., Fernandez, B.A., Marshall, C.R., Noor, A., Lionel, A.C., Prasad, A., Pinto, D., Joseph-George, A.M., Noakes, C. *et al.* (2011) Hemizygous deletions on chromosome 1p21.3 involving the DPYD gene in individuals with autism spectrum disorder. *Clin. Genet.*, **80**, 435–443.
71. Xu, B., Roos, J.L., Dexheimer, P., Boone, B., Plummer, B., Levy, S., Gogos, J.A. and Karayiorgou, M. (2011) Exome sequencing supports a de novo mutational paradigm for schizophrenia. *Nat. Genet.*, **43**, 864–868.
72. Griswold, A.J., Ma, D., Cukier, H.N., Nations, L.D., Schmidt, M.A., Chung, R.H., Jaworski, J.M., Salyakina, D., Konidari, I., Whitehead, P.L. *et al.* (2012) Evaluation of copy number variations reveals novel candidate genes in autism spectrum disorder-associated pathways. *Hum. Mol. Genet.*, **21**, 3513–3523.
73. Steinberg, S., Mors, O., Borglum, A.D., Gustafsson, O., Werge, T., Mortensen, P.B., Andreassen, O.A., Sigurdsson, E., Thorgeirsson, T.E., Bottcher, Y. *et al.* (2011) Expanding the range of ZNF804A variants conferring risk of psychosis. *Mol. Psychiatry*, **16**, 59–66.
74. Talkowski, M.E., Rosenfeld, J.A., Blumenthal, I., Pillalamarri, V., Chiang, C., Heilbut, A., Ernst, C., Hanscom, C., Rossin, E., Lindgren, A.M. *et al.* (2012) Sequencing chromosomal abnormalities reveals neurodevelopmental loci that confer risk across diagnostic boundaries. *Cell*, **149**, 525–537.
75. Awadalla, P., Gauthier, J., Myers, R.A., Casals, F., Hamdan, F.F., Griffing, A.R., Cote, M., Henrion, E., Spiegelman, D., Tarabeux, J. *et al.* (2010) Direct measure of the de novo mutation rate in autism and schizophrenia cohorts. *Am. J. Hum. Genet.*, **87**, 316–324.
76. Kirov, G., Pocklington, A.J., Holmans, P., Ivanov, D., Ikeda, M., Ruderfer, D., Moran, J., Chambert, K., Toncheva, D., Georgieva, L. *et al.* (2012) De novo CNV analysis implicates specific abnormalities of postsynaptic signalling complexes in the pathogenesis of schizophrenia. *Mol. Psychiatry*, **17**, 142–153.
77. Floris, C., Rassu, S., Boccone, L., Gasperini, D., Cao, A. and Crisponi, L. (2008) Two patients with balanced translocations and autistic disorder: CSMD3 as a candidate gene for autism found in their common 8q23 breakpoint area. *Eur. J. Hum. Genet.*, **16**, 696–704.
78. Malhotra, D., McCarthy, S., Michaelson, J.J., Vacic, V., Burdick, K.E., Yoon, S., Cichon, S., Corvin, A., Gary, S., Gershon, E.S. *et al.* (2011) High frequencies of de novo CNVs in bipolar disorder and schizophrenia. *Neuron*, **72**, 951–963.
79. Toro, R., Konyukh, M., Delorme, R., Leblond, C., Chaste, P., Fauchereau, F., Coleman, M., Leboyer, M., Gillberg, C. and Bourgeron, T. (2010) Key role for gene dosage and synaptic homeostasis in autism spectrum disorders. *Trends Genet.*, **26**, 363–372.
80. Costain, G. and Bassett, A.S. (2012) Clinical applications of schizophrenia genetics: genetic diagnosis, risk, and counseling in the molecular era. *Appl. Clin. Genet.*, **5**, 1–18.
81. Bourgeron, T. (2009) A synaptic trek to autism. *Curr. Opin. Neurobiol.*, **19**, 231–234.
82. Grant, S.G. (2012) Synaptopathies: diseases of the synaptome. *Curr. Opin. Neurobiol.*, **22**, 522–529.
83. Ramocki, M.B. and Zoghbi, H.Y. (2008) Failure of neuronal homeostasis results in common neuropsychiatric phenotypes. *Nature*, **455**, 912–918.
84. Poot, M., van der Smagt, J.J., Brilstra, E.H. and Bourgeron, T. (2011) Disentangling the myriad genomics of complex disorders, specifically focusing on autism, epilepsy, and schizophrenia. *Cytogenet. Genome Res.*, **135**, 228–240.
85. Mulley, J.C. and Mefford, H.C. (2011) Epilepsy and the new cytogenetics. *Epilepsia*, **52**, 423–432.
86. Rapoport, J., Chavez, A., Greenstein, D., Addington, A. and Gogtay, N. (2009) Autism spectrum disorders and childhood-onset schizophrenia: clinical and biological contributions to a relation revisited. *J. Am. Acad. Child Adolesc. Psychiatry*, **48**, 10–18.
87. King, B.H. and Lord, C. (2011) Is schizophrenia on the autism spectrum? *Brain Res.*, **1380**, 34–41.
88. Stone, W.S. and Iguchi, L. (2011) Do apparent overlaps between schizophrenia and autistic spectrum disorders reflect superficial similarities or etiological commonalities? *N. Am. J. Med. Sci. (Boston)*, **4**, 124–133.
89. Owen, M.J., O’Donovan, M.C., Thapar, A. and Craddock, N. (2011) Neurodevelopmental hypothesis of schizophrenia. *Br. J. Psychiatry*, **198**, 173–175.
90. Daniels, J.L., Forssen, U., Hultman, C.M., Cnattingius, S., Savitz, D.A., Feychting, M. and Sparen, P. (2008) Parental psychiatric disorders associated with autism spectrum disorders in the offspring. *Pediatrics*, **121**, e1357–e1362.
91. Sullivan, P.F., Magnusson, C., Reichenberg, A., Boman, M., Dalman, C., Davidson, M., Fruchter, E., Hultman, C.M., Lundberg, M., Langstrom,

- N. *et al.* (2012) Family history of schizophrenia and bipolar disorder as risk factors for autism. *Arch. Gen. Psychiatry*, **69**, 1099–1103.
92. Brooks-Kayal, A. (2010) Epilepsy and autism spectrum disorders: are there common developmental mechanisms? *Brain Dev.*, **32**, 731–738.
93. Chang, Y.T., Chen, P.C., Tsai, I.J., Sung, F.C., Chin, Z.N., Kuo, H.T., Tsai, C.H. and Chou, I.C. (2011) Bidirectional relation between schizophrenia and epilepsy: a population-based retrospective cohort study. *Epilepsia*, **52**, 2036–2042.
94. Risi, S., Lord, C., Gotham, K., Corsello, C., Chrysler, C., Szatmari, P., Cook, E.H. Jr, Leventhal, B.L. and Pickles, A. (2006) Combining information from multiple sources in the diagnosis of autism spectrum disorders. *J. Am. Acad. Child Adolesc. Psychiatry*, **45**, 1094–1103.
95. Bassett, A.S., Costain, G., Fung, W.L., Russell, K.J., Pierce, L., Kapadia, R., Carter, R.F., Chow, E.W. and Forsythe, P.J. (2010) Clinically detectable copy number variations in a Canadian catchment population of schizophrenia. *J. Psychiatr. Res.*, **44**, 1005–1009.
96. Noor, A., Whibley, A., Marshall, C.R., Gianakopoulos, P.J., Piton, A., Carson, A.R., Orlic-Milacic, M., Lionel, A.C., Sato, D., Pinto, D. *et al.* (2010) Disruption at the PTCHD1 Locus on Xp22.11 in Autism spectrum disorder and intellectual disability. *Sci. Transl. Med.*, **2**, 49ra68.
97. Itsara, A., Cooper, G.M., Baker, C., Girirajan, S., Li, J., Absher, D., Krauss, R.M., Myers, R.M., Ridker, P.M., Chasman, D.I. *et al.* (2009) Population analysis of large copy number variants and hotspots of human genetic disease. *Am. J. Hum. Genet.*, **84**, 148–161.
98. Baldwin, E.L., Lee, J.Y., Blake, D.M., Bunke, B.P., Alexander, C.R., Kogan, A.L., Ledbetter, D.H. and Martin, C.L. (2008) Enhanced detection of clinically relevant genomic imbalances using a targeted plus whole genome oligonucleotide microarray. *Genet. Med.*, **10**, 415–429.
99. Pinto, D., Darvishi, K., Shi, X., Rajan, D., Rigler, D., Fitzgerald, T., Lionel, A.C., Thiruvahindrapuram, B., Macdonald, J.R., Mills, R. *et al.* (2011) Comprehensive assessment of array-based platforms and calling algorithms for detection of copy number variants. *Nat. Biotechnol.*, **29**, 512–520.
100. Silversides, C.K., Lionel, A.C., Costain, G., Merico, D., Migita, O., Liu, B., Yuen, T., Rickaby, J., Thiruvahindrapuram, B., Marshall, C.R. *et al.* (2012) Rare copy number variations in adults with tetralogy of fallot implicate novel risk gene pathways. *PLoS Genet.*, **8**, e1002843.
101. Purcell, S., Neale, B., Todd-Brown, K., Thomas, L., Ferreira, M.A., Bender, D., Maller, J., Sklar, P., de Bakker, P.I., Daly, M.J. *et al.* (2007) PLINK: a tool set for whole-genome association and population-based linkage analyses. *Am. J. Hum. Genet.*, **81**, 559–575.