

RCP2.6: exploring the possibility to keep global mean temperature increase below 2°C

Detlef P. van Vuuren · Elke Stehfest · Michel G. J. den Elzen · Tom Kram · Jasper van Vliet · Sebastiaan Deetman · Morna Isaac · Kees Klein Goldewijk · Andries Hof · Angelica Mendoza Beltran · Rineke Oostenrijk · Bas van Ruijven

Received: 17 September 2010 / Accepted: 21 June 2011 / Published online: 5 August 2011
© The Author(s) 2011. This article is published with open access at Springerlink.com

Abstract The RCP2.6 emission and concentration pathway is representative of the literature on mitigation scenarios aiming to limit the increase of global mean temperature to 2°C. These scenarios form the low end of the scenario literature in terms of emissions and radiative forcing. They often show negative emissions from energy use in the second half of the 21st century. The RCP2.6 scenario is shown to be technically feasible in the IMAGE integrated assessment modeling framework from a medium emission baseline scenario, assuming full participation of all countries. Cumulative emissions of greenhouse gases from 2010 to 2100 need to be reduced by 70% compared to a baseline scenario, requiring substantial changes in energy use and emissions of non-CO₂ gases. These measures (specifically the use of bio-energy and reforestation measures) also have clear consequences for global land use. Based on the RCP2.6 scenario, recommendations for further research on low emission scenarios have been formulated. These include the response of the climate system to a radiative forcing peak, the ability of society to achieve the required emission reduction rates given political and social inertia and the possibilities to further reduce emissions of non-CO₂ gases.

1 Introduction

Over the last few years, the interest in climate-policy related questions has strongly increased. In response, many mitigation scenarios have been published in the scientific literature exploring the effectiveness of climate policy. However, in order to explore future climate change, climate models currently still use the SRES scenarios (Nakicenovic and Swart 2000) that only include possible future emission scenarios in the absence of climate policy. Consequently, these scenarios are not representative of the full range of possible emission developments anymore. The increasing relevance of mitigation scenarios has been

D. P. van Vuuren (✉) · E. Stehfest · M. G. J. den Elzen · T. Kram · J. van Vliet · S. Deetman · M. Isaac · K. Klein Goldewijk · A. Hof · A. Mendoza Beltran · R. Oostenrijk · B. van Ruijven
PBL Netherlands Environmental Assessment Agency, PO BOX 303, 3720 BA Bilthoven,
The Netherlands
e-mail: detlef.vanvuuren@pbl.nl

D. P. van Vuuren
Department of Geography, Utrecht University, Utrecht, The Netherlands

an important reason for the IPCC to request the climate research community to develop a new set of scenarios (IPCC 2007). In response, the scientific community designed a multi-phase process to develop new scenarios, involving researchers working on integrated assessment, climate system modeling and assessment of climate impacts and adaptation. An overview of the whole process is provided by Moss et al. (2008, 2010). As a first step in the process, four scenarios were selected from the scientific literature as a representative set of the current literature (see also Van Vuuren et al., 2011). An important purpose of this selection was to allow new climate model runs exploring a very wide range of radiative forcing levels, in parallel with new work on socio-economic scenarios. The scenarios, or, more precisely, the information contained in these scenarios on emissions and concentration and land use, were named the “representative concentration pathways” (RCPs).

At the time of IPCC’s Fourth Assessment Report, the majority of mitigation scenarios focused on stabilizing the radiative forcing of greenhouse gases around 4.5 W/m^2 in 2100 (see Fisher et al. 2007a).¹ Only six scenarios from three independent studies were identified that explored the possibility of reaching forcing levels below 3 W/m^2 (Azar et al. 2006; Riahi et al. 2007; Van Vuuren et al. 2007a). Since then, however, a whole range of new literature has emerged that explore such ambitious targets (e.g. Calvin et al. 2009; Clarke et al. 2009; Edenhofer et al. 2010; Rao et al. 2008). This new scenario literature has emerged partly as a responses to work by Meinshausen et al. (2006), who indicated that stabilization of radiative forcing at such low levels would be needed to maintain a relatively high probability to limit global mean temperature increase to 2°C .

Van Vuuren et al. (2006, 2007a) explored for the first time in detail the required changes in the energy and land-use system to achieve such low forcing levels (2.6 and 2.9 W/m^2) using the IMAGE model. To represent the category of low forcing scenarios within the RCP set, the IMAGE scenario was selected. In fact, as during the Noordwijkerhout conference no decision could be made between the IMAGE scenario leading to 2.6 and 2.9 W/m^2 (Moss et al. 2008) both were temporally selected and the scenario named RCP3-PD, indicating that emissions in this scenario lead to a radiative forcing of around 3 W/m^2 mid-century and decline afterwards (PD stands for peak-and-decline). After confirmation of reproducibility of the 2.6 W/m^2 scenario by other models, a final choice was made to include this scenario in the RCP set and since then, also the name RCP2.6 has been used (e.g. Moss et al. 2010). Both the name RCP3-PD and RCP2.6 thus refer to the same emission scenario (we use the latter in this paper). As described in the overview paper on the RCP process (Van Vuuren et al., 2011), all original RCPs have been updated, especially with respect to 1) the consistency with historical emissions and newly available emissions data and 2) spatial data on emissions and land use as input to the climate models. For the RCP2.6, specifically, also attention was paid to the possible implications of emissions associated with bioenergy use (which was not yet accounted for). This updated scenario has been described elsewhere (Van Vuuren et al. 2010c), in particular with respect to emissions trends and bioenergy use. In this article, we briefly repeat the general methodology used for the RCP2.6 (Section 2) and the main results (Section 3.1), but focus additionally on the downscaling methods that have been used to generate spatially explicit information as input to the climate models (Section 2 and 3.3). To put the results into context, Section 3.4 discusses some of the main uncertainties of the RCP2.6 and, finally, in Section 3.5 we compare the RCP2.6 to IMAGE scenarios for higher radiative forcing levels (4.5 and 6 W/m^2 in 2100) and the other RCPs. These two sections together explore the uncertainty related to the RCP2.6, and to indicate the differences in policy action associated with different

¹ All radiative forcing numbers in this paper refer to the forcing of greenhouse gases, ozone and aerosols.

mitigation levels. The other RCPs (leading to 8.5 W/m^2 in 2100, stabilization at 6.0 W/m^2 and stabilization at 4.5 W/m^2) have been described in detail elsewhere in this Special Issue (Masui et al. 2011; Riahi et al. 2011; Thomson et al. 2011).

2 Methods for scenario development

2.1 Model description

The IMAGE 2.4 modelling framework, used to create the RCP2.6, is an integrated assessment model, consisting of a set of linked and integrated models (Bouwman et al. 2006). Together, the framework describes important elements in the long-term dynamics of global environmental change, such as air pollution, climate change, and land-use change. Important subcomponents are the global energy model TIMER, the land use and land cover submodel, the carbon cycle model and the MAGICC6 climate model (Meinshausen et al. 2008). The FAIR-SiMCAp 2.0 model is also part of the framework (den Elzen et al. 2007). This model creates climate policy scenarios based on available information in the other parts of IMAGE. The FAIR-SiMCAp model determines the emission reduction across different gases and over time following a least-cost approach, using regional MAC curves derived from IMAGE for the different emissions sources.²

The overall methodology for constructing the mitigation scenario consists of three major steps (Fig. 1):

1. Both the land use and energy submodels of IMAGE are used first for constructing the baseline emission scenario. These models also provide information on the abatement potential and costs of greenhouse gas emissions from the energy and land-use systems.
2. The FAIR-SiMCAp model is used for developing global emission pathways that lead to a long-term stabilization of the atmospheric greenhouse gas concentration. As part of this step, the FAIR model determines the abatement costs and global emission reduction from the baseline scenario, assuming a cost-optimal implementation of available reduction options over the different regions, and for the various gases and sources, using marginal abatement costs, and a constant discount rate of 5%. Optimization is done within certain implementation criteria such as the maximum reduction potential (as defined by IMAGE) and a maximum emission reduction rate (based on IMAGE calculations and literature review). The abatement costs represent direct costs and do not capture any macroeconomic feedback. The most important assumptions made in the reduction potential have been described in detail in (Lucas et al. 2007; Van Vuuren et al. 2007a).
3. The full IMAGE model framework (energy and land use) implements the changes in emission levels resulting from the abatement action (emission reductions) and the carbon price, as determined in the previous step, to develop the final mitigation scenario (emissions, land use, energy system).

² The model names mentioned in this section are acronyms. IMAGE: Integrated Model to Assess the Global Environment. TIMER: The Image Energy Regional model. FAIR: Framework to Assess International Regimes for differentiation of climate commitments. MAGICC: Model for the Assessment of Greenhouse-gas Induced Climate Change. SiMCAp: Simple Model for Climate policy assessment.

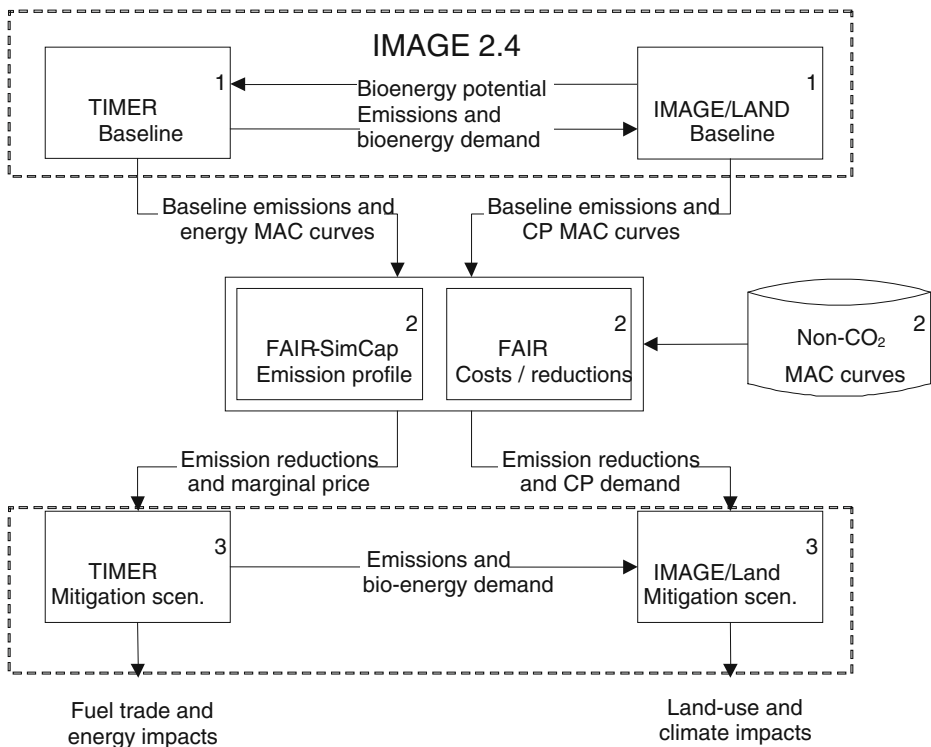


Fig. 1 Overall methodology. Numbers refer to the three main steps in the development of mitigation scenarios. In step 1, the IMAGE 2.4 system is used to implement the baseline scenario and determine the mitigation potential. In step 2, the FAIR model is used to determine the emission reductions across different sectors and across time. In step 3, the mitigation scenario is implemented in the IMAGE system (MAC=marginal abatement costs; CP=carbon plantations)

2.1.1 Energy and associated emissions

The global energy model TIMER looks into long-term trends in the energy system (Bouwman et al. 2006). The model describes the demand and supply of nine final energy carriers and ten primary energy carriers for 26 world regions.³ The demand sub-model of TIMER determines demand for fuels and electricity in five sectors (industry, transport, residential, services and other) based on structural change, autonomous and price-induced change in energy intensity ('energy conservation') and price-based fuel substitution. The demand for electricity is fulfilled by fossil-fuel or bioenergy based thermal power, hydropower, nuclear power and solar or wind. Model preference for selecting specific technologies is based on relative costs and preferences using multinomial logit equations. The exploration and exploitation of fossil fuels (either for electricity or direct fuel use) is described in terms of depletion and technological development. Bioenergy is available as a

³ There are eight developed countries/regions: Canada, USA, Western Europe, Central Europe, Ukraine region, Russian Federation, Japan and Oceania (Australia and New-Zealand); and eighteen developing countries/regions: Mexico, remainder of (Rest) Central America, Brazil, remainder of (Rest) South America, northern Africa, western Africa, Eastern Africa, South Africa, Kazakhstan, Middle East, Turkey, India, Korea region, China region, Mekong region, Indonesia region, remainder of (Rest) southern Asia and remainder of (Rest) southern Africa.

substitute of fossil fuels for both liquid fuel and thermal generation. Emissions are calculated by multiplying the data on energy consumption and production with fuel- and region specific emission factors that are derived from the EDGAR database (Olivier et al. 2001). For most gases, the emission factors are assumed to decline over time as a result of technology development and as to reflect the notion of increasing environmental awareness with rising income levels. For CO₂, emission factors stay constant over time unless the model explicitly selects technologies applying carbon capture and storage (CCS) (on the basis of costs).

2.1.2 Land use and associated emissions

The land-cover submodels in the earth system simulate the change in land use and land cover at $0.5 \times 0.5^\circ$ driven by demands for food, timber and biofuels, and changes in climate (Bouwman et al. 2006). A crop module based on the FAO agro-ecological zones approach computes the spatially explicit yields of different crop groups and grasses, and the areas used for their production, as determined by climate and soil quality. For demand for agricultural production, the IMAGE model mostly uses scenarios from agro-economic models. Where expansion of agricultural land is required, a rule-based “suitability map” determines the grid cells selected on the basis of the grid cell’s potential crop yield, its proximity to other agricultural areas and to water bodies. The earth system also includes a natural vegetation model to compute changes in vegetation in response to climate change. Land-use related emissions occur from both land use (e.g. methane emissions from animals) and land-use change (deforestation). The former are calculated by explicit emission factors based on the EDGAR database (Olivier et al. 2001). The latter depend on the carbon fluxes between vegetation, carbon stocks in soils and the atmosphere.

2.1.3 Emissions from other sources

Emissions associated with industrial and chemical production, processes and other activities, and emissions of halogenated gases, are calculated in different ways. For several sources (adipic and nitric acid production, bulk chemical production, cement production, copper smelting, lead and zinc production, steel industry, paper industry, sulphuric acid production and solvents) emissions are calculated by multiplying the change in industrial value added with exogenous emission factors. For the emissions of halogenated gases, a recent update was made to the model. The emissions of ozone depletion substances regulated by the Montreal Protocol (e.g., CFCs, HCFCs, etc.) are prescribed, following scenarios that take account of their regulation. All other halogenated gases (e.g., HFCs, PFCs, SF₆) are determined on the basis of assumed changes in the relevant emission factors and activity levels (such as cooling). For the period up to 2020, these are consistent with the information made available for EMF-21 (Weyant et al. 2007). After 2020 emissions are projected based on specific relationships between activity levels and income and population size. For each gas, also a marginal abatement cost curve has been determined describing the mitigation potential. The method has been described by Harnisch et al. (2009).

2.1.4 Climate system

Emissions from land use and energy and industrial sources are used in the IMAGE model to calculate the changes in concentrations of greenhouse gases and air pollutants. These drive the climate model MAGICC6 that is included in IMAGE to calculate the resulting radiative

forcing and changes in global mean temperature increase (Meinshausen et al. 2008). Next, changes in temperature and precipitation are calculated at grid scale by means of pattern scaling (Schlesinger et al. 2000). IMAGE accounts for these changes, such as temperature, precipitation and terrestrial CO₂ feedbacks on the selection of crop types, and the migration of ecosystems. This allows for calculating changes in crop and grass yields and, as a consequence, the location of different types of agriculture, changes in net primary productivity and migration of natural ecosystems. The original IMAGE 2.6 W/m² scenario (Van Vuuren et al. 2007a) was developed using an IMAGE version containing the MAGICC4 model (Wigley 2003). The choice to use the MAGICC6 model was part of the harmonization activities for the RCP profiles (see Van Vuuren et al. (2010b) and Meinshausen et al. (2011)). The updated climate model has in particular implications for the radiative forcing of aerosols, but the implications for the reduction rates in 2100 are modest.

2.2 Main scenario assumptions

The baseline scenario of our analysis is the IMAGE 2.4 B2 scenario (Van Vuuren et al. 2010c). This scenario represents a medium development scenario for population, income, energy use and land use. Starting from this baseline, the RCP2.6 scenario has been derived following an overshoot profile in radiative forcing. Den Elzen and Van Vuuren (2007) have shown that due to inertia in the climate system a limited overshoot does not lead to a significant increase in the probability of overshooting a temperature target. The IMAGE model can be run with and without adding bioenergy and carbon capture and storage (BECCS) to the mitigation portfolio. This technology is crucial for the question whether a 2.6 W/m² target can be achieved in IMAGE, because allowing BECCS introduces the potential to create net negative emissions in the energy system (see also results and discussion sections).

2.3 Assumptions made in emission and land use downscaling

2.3.1 Emissions

The regional emissions of IMAGE model were downscaled at the level of countries and a 0.5×0.5 grid using the downscaling method that has been described by Van Vuuren et al. (2007b). This method is basically organized around the so-called Kaya-identity (Kaya 1989):

$$Em = Pop * GDP / pop * em / GDP \quad (1)$$

This function describes emissions (em) as function of population (pop), income per capita (GDP/pop) and emission intensity (em/GDP). For population, the 26 region data of the IMAGE model was downscaled to the country level by using the fraction of each country in the corresponding IMAGE region within the original UN medium population scenario (UN 2004). Next, it was assumed that each grid cell follows the trend of the country it belongs to (linear downscaling algorithm). For income (GDP per capita), the data was downscaled from the regional to the country level by assuming that poorer countries in a region grow faster than richer countries. A convergence algorithm was used with a convergence year in 2150, i.e. beyond the scenario horizon. In other words, only partial convergence occurs (similar as the convergence across the different regions). In the

calculations, a correction was introduced ensuring that total GDP of each region was preserved allocating differences on the basis of GDP volume. Again, the data was transferred to the grid by linear downscaling from the country level. Finally, emission intensities (emission per unit GDP) were downscaled to the country level assuming again convergence in 2150 and a linear algorithm to go to the grid level. Based on this, emissions per grid cell were calculated using Eq. 1 by multiplying the three downscaled data sets.

The emission scenarios of all RCPs have been harmonized with the grid scale emissions data for 2000 ($0.5 \times 0.5^\circ$) described by Granier et al. (2011). Emissions of all reactive gases and aerosols (methane (CH_4), sulphur dioxide (SO_2), NO_x , VOC, CO, OC and BC) were downscaled for 11 separate emissions categories: surface transport, international shipping, aviation, power plants, solvents, waste, industry, residential and commercial activities, agricultural waste burning, other agriculture emissions, savanna burning, land-use change. With a few exceptions, the existing IMAGE categories can be mapped directly on these reporting categories. One exception relates to traditional charcoal emissions of VOC and OC. Here, emissions have been added to the energy sector as they are not normally explicitly included in the IMAGE model. Another exception is transport. The IMAGE model calculates total transport and marine bunker emissions. Given the required split (aviation bunkers, international shipping and surface transport), the original IMAGE output was multiplied with the time-dependent ratios of these three categories in the scenarios of the EU FP6 Integrated Project QUANTIFY.⁴ Subsequently, the linear downscaling algorithm was used for all transport emissions. For all emissions sources, the IMAGE output was made consistent with the historical data at the level of regions and sectors by using a multiplier equal to the ratio between the historical data and the IMAGE output that linearly converges to 1 in 2100. For sectors where harmonization corrections were found to be too large, instead of introducing a multiplicative harmonization factor that converges to 1, a constant offset was introduced (assuming that some emission sources were not included in the model).

2.3.2 Land use

Land use is dynamically calculated in IMAGE at a 0.5×0.5 grid. This means that the downscaling algorithms are applied within the model itself and not as a post-processing step. First, the production of agricultural products is determined at the regional scale (based on demand and trade assumptions). For the RCP2.6, production levels are based on exogenous input, i.e. the Adapting Mosaic scenario of the Millennium Ecosystem Assessment (Alcamo et al. 2005; Carpenter and Pingali 2006) with the exception of the demand for bioenergy crops which is taken directly from the energy model of IMAGE. Next, the regional production figures are downscaled to the grid using a set of allocation rules. These rules allocate land use on the basis of a combination of the following factors: 1) agricultural productivity, 2) proximity to existing agricultural areas, 3) proximity to current water bodies and cities and 4) a random factor (Bouwman et al. 2006). For the 1970–2000 period, instead of these allocation rules, information from the HYDE database (Klein Goldewijk et al. 2011) is used to allocate crop and pasture land to grid. In IMAGE, the land use data is used to drive agricultural emissions but also deforestation emissions (for CO_2 but also air pollutants).

⁴ <http://www.pa.op.dlr.de/quantify/>

3 Results

3.1 Trends for the baseline scenario

The baseline scenario assumes that some of the historical trends continue in the next decades. Energy demand will continue to grow mostly in the emerging economies, driven by high income growth. In contrast, in developed countries, growth in energy demand levels off. Based on costs, energy supply is projected to continue to be dominated by fossil fuels (Fig. 2). While oil and, in the longer run, also natural gas are projected to become more expensive, coal prices stay relative low. This leads to an increase in coal use as feedstock for power and hydrogen production. In the baseline scenario, hydrogen becomes competitive in the transport sector after 2050 given costs reductions of production, transport and conversion technology and the simultaneous cost increases in oil products. As shown elsewhere, this result strongly depends on assumptions for different transport technologies vis-à-vis each other; less optimistic for hydrogen can easily result in scenarios where the transport sector is dominated by, for instance, biofuels or electric technologies (van Ruijven et al. 2007).

The baseline also projects an increase in the production of agricultural products over time. This increase is mostly driven by an increase in the global population, a modest increase in per capita consumption levels and a shift towards more meat intensive diets. Similarly as in the last few decades, the increase in global food production is mostly achieved through an increase in yield. While, for instance, global cereal production increased by 70% since 1970, crop land has increased only by about 6%. The reason for this has been a continuous increase in yields, about 1.5% annually for cereals on average at the global level. While this rate of improvement is likely to fall, so is the rate of increase in food demand. Assuming a somewhat lower than historically rate of yield improvement (e.g. for cereals an average rate of 0.75% per year over the whole period is assumed), global crop land for food production is projected to increase modestly up to 2050 and stabilize afterwards. Pasture land remains more or less stable from the present level, as a result of counteracting trends: 1) increasing meat demand, 2) a shift globally from extensive, grazing-based livestock farming to more intensive, feed-crop based forms of livestock farming, and 3) a stabilizing and after 2050 even decreasing global population. A review of baseline scenarios in the literature shows typically a projected increase in agricultural land use from 2000 to 2030 between 0% and 20% (with an average of 11%) (Rose et al. 2011;

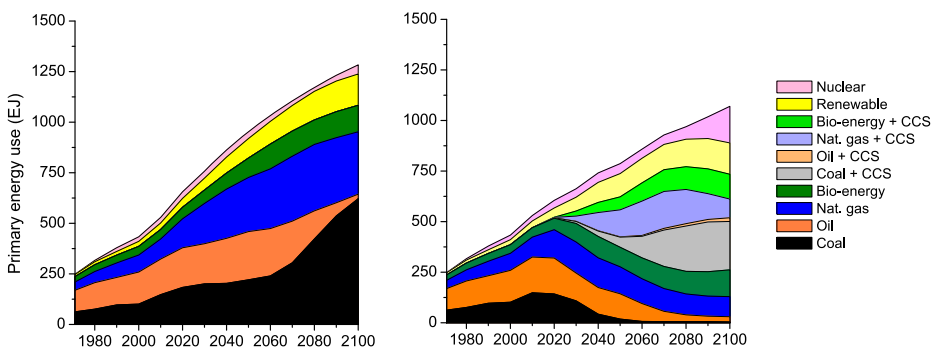


Fig. 2 Trends in global energy use for the baseline (*left*) and the mitigation scenario RCP2.6 (*right*) (CCS=Carbon Capture and Storage)

Smith et al. 2010). The projection that total global agricultural area (cropland plus grassland) is stabilized from 2030 onwards can thus be regarded as consistent with this range, but somewhat on the optimistic side. As a result of stabilizing agricultural area, emissions from the expansion of land use decrease during the 21st century, but do only approach zero after 2060 (annual emissions were around 1.5 GtC in recent historical years (Houghton 2008)).

The total sum of greenhouse gas emissions, including land-use CO₂, significantly increases under the baseline scenario from 11 GtC-eq in 2000⁵ to 27 GtC-eq in 2100 (Fig. 3). This implies that the baseline scenario lies well within the literature range. Driven by these emissions, greenhouse gas concentrations rise substantially over time leading to a radiative forcing of about 7.2 W/m² by 2100. The global mean temperature increase in 2100 in the baseline scenario is according to the IMAGE model about 4°C above pre-industrial levels, assuming a climate sensitivity of 3°C.

3.2 Trends for the mitigation scenario RCP2.6

Clearly, emissions would need to decline substantially in order to reach a level of 2.6 W/m² by the end of the century. The cumulative emission reduction over the century amounts to about 70% and the emission reduction in 2100 to more than 95% compared to baseline (Fig. 3). The reductions are very different across the main greenhouse gases. CO₂ emissions are reduced by more than 100% to around -1 GtC per year in 2100. This is achieved by a considerable improvement of energy efficiency, replacement of unabated use of fossil fuels by a combination of fossil-fuel use with CCS, renewable energy and nuclear power and also the use of BECCS (see for more details Van Vuuren et al., 2007a). The latter leads to negative emissions in the power sector (see also discussion). This decrease is slightly offset by an increase in land-use related CO₂ emissions compared to baseline due to use of land for bioenergy production. This reduces the uptake of CO₂ by reducing the re-growing of forests compared to baseline (Fig. 4).

The emission reduction rates for methane and nitrous oxide are less than for CO₂. The reason is that the abatement potential for several important sources of these gases is limited. For instance, this includes methane emissions from ruminant livestock, and N₂O emissions from soils. In contrast, the calculations show energy-related emissions from methane to be reduced to nearly zero: only CH₄ emissions from open-pit coal mining and limited emissions from natural gas transport remain. For N₂O, process-related emissions are reduced to zero, but for agricultural emissions reduction potential is limited. On top of this, the increase in bioenergy production also leads to additional N₂O emissions. There has been substantial debate about the magnitude of this impact (see (Crutzen et al. 2007; Smeets et al. 2009)). As discussed in Van Vuuren et al. (2010c), N₂O emissions from woody bioenergy (the largest share of bioenergy used in this scenario) are likely to be relatively low. Still, taken all changes together N₂O emissions are only slightly lower in the RCP2.6 case than in the baseline. For the halogenated gases that are not regulated under the Montreal Protocol, finally, the baseline scenario projects a fast increase—mostly driven by demand for HFCs in application for air conditioning (here included in process emissions). The RCP2.6 scenario shows a large reduction of these emissions, as in most cases, relatively cheap alternatives exist.

⁵ The term all greenhouse gas emissions refers to the global warming potential-weighted sum of six Kyoto greenhouse gas emissions. For the greenhouse gas concentration, instead, all radiative forcing items including aerosols and ozone are accounted for.

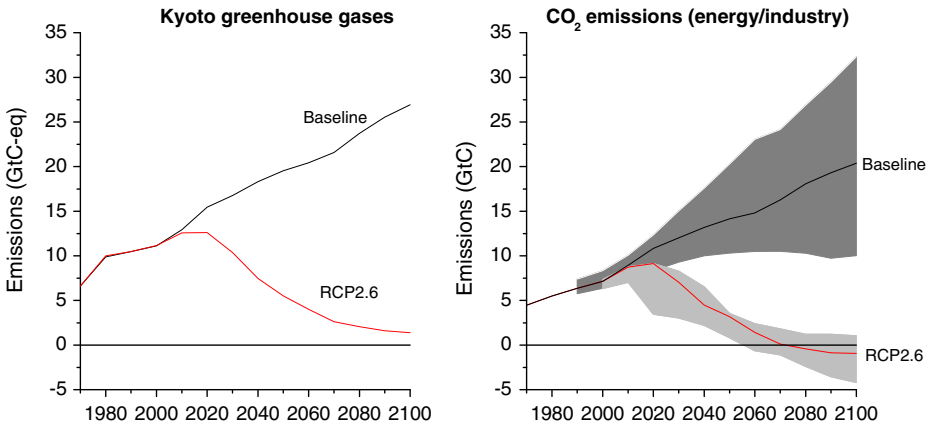


Fig. 3 Greenhouse gas and energy- and industry-related CO₂ emissions in the baseline and mitigation scenario RCP2.6. For energy- and industry-related CO₂ emissions, ranges of scenarios published in the literature for scenarios without climate policy (*baseline*) or leading to a forcing of 2.6 W/m² are indicated (10–90th percentile)

The influence of the mitigation policies on energy use is illustrated in Fig. 2—which shows that unabated use of fossil fuels is reduced to almost zero. Climate policy leads to an improvement in energy efficiency, more use of CCS, increased use of bioenergy, and some increase in the use of nuclear power and PV/Wind. PV/wind increase their market share in the energy system but the increase in absolute terms is only small in this scenario, caused by 1) other options (e.g. CCS) being more economic, 2) limitations associated with

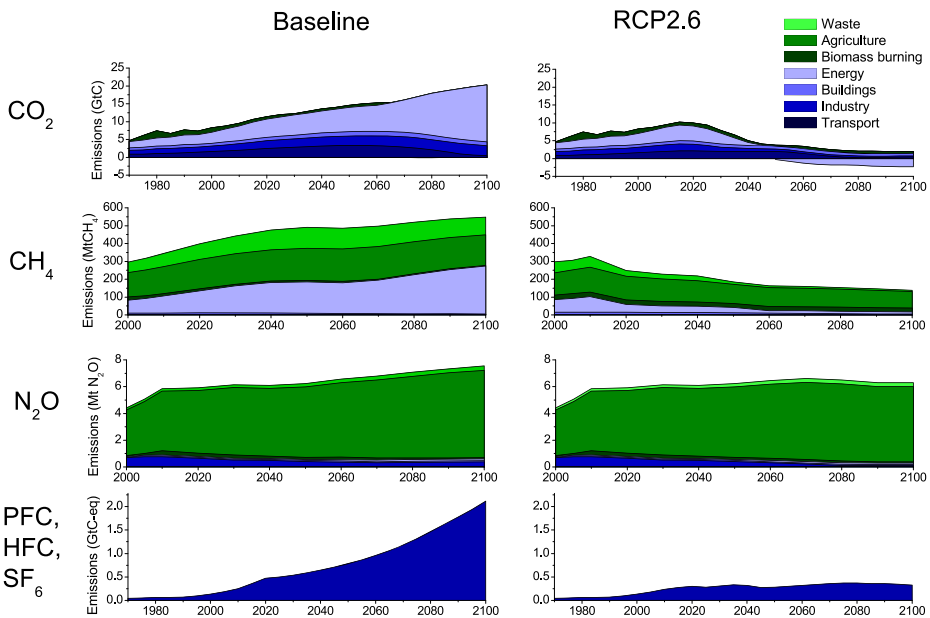


Fig. 4 Trends in anthropogenic emissions of major greenhouse gases, baseline (*left*) vs. mitigation scenario RCP2.6 (*right*) (transport includes also international transport; industry includes both energy-related emissions and process emissions; deforestation emissions are included under the heading biomass burning)

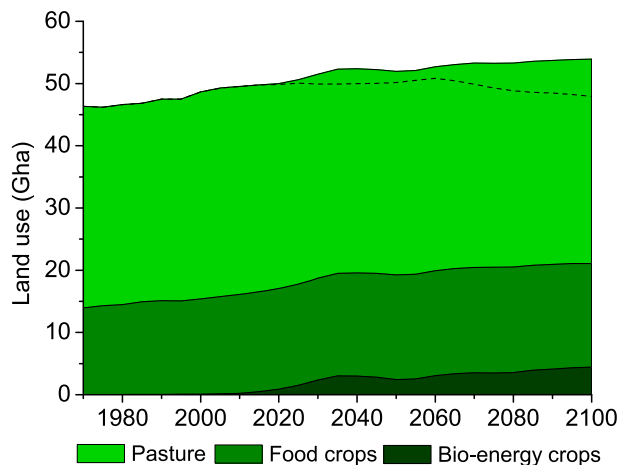
intermittent nature of renewables, and 3) the share of power in total energy use. For land use, it should be noted that other assumptions than climate policy (food production) have a much stronger impact on land use (Fig. 5). Still, some impacts on land use occur. Climate policies lead to an increase in land used for bioenergy. At the same time, some land is used for reforestation activities (“sinks”). As a result, CO₂ emissions from land use are slightly higher in the RCP2.6 scenario than in the baseline.

3.2.1 Emissions of air pollutants

The emissions of many air pollutants change significantly over time in both the baseline and the RCP2.6 scenario (Fig. 6). The changes in emissions result from both changes in the activity levels and emission factors. The latter reflect assumed changes in air pollution policies and technology development. For several air pollutants, the baseline scenario projects a clear decrease in emissions over time, especially for SO₂ and CO. This is mostly due to the assumed convergence over time of emission factors in low-income countries to levels consistent with current air pollution control policies in high-income countries. For other air pollutants (NH₃, NO_x and VOC), the baseline scenario more or less results in constant emissions up to 2050. The climate policies as assumed in RCP2.6 result in a substantial decrease in emissions of air pollutants, especially for SO₂ and VOC. This is caused by the fact that several activities that lead to high CO₂ emissions (such as coal use) also cause high air pollutant emissions: mitigation of these activities leads to a decrease of multiple emissions at the same time. Reduction of SO₂ emissions mainly originates from reduction of coal use without CO₂ capture in power production; reduction of VOC emissions from changes in transport fuel (towards hydrogen) and residential energy use. For NH₃, the opposite trend is observed. NH₃ emissions mainly originate from the agricultural sector (animal waste and fertilizer). The only impact of climate policy here is that increased bioenergy production leads to some increase in the use of fertilizer and subsequent consequences for NH₃ emissions.

Emissions of black carbon (BC) and organic carbon (OC) have been newly added to the IMAGE system. Emission factors have been used that are similar with those in the RCP emission inventory (Granier et al. 2011). For energy-related emissions, it has been assumed that emission factors converge over time to values of high-income regions. For land-use related emissions, emission factors have been held constant. Both the declining emissions factors and reduction of traditional energy use and deforestation lead to a declining trend in

Fig. 5 Trends in land use in the mitigation scenario RCP2.6 and the baseline (baseline trend indicated by dashed line)



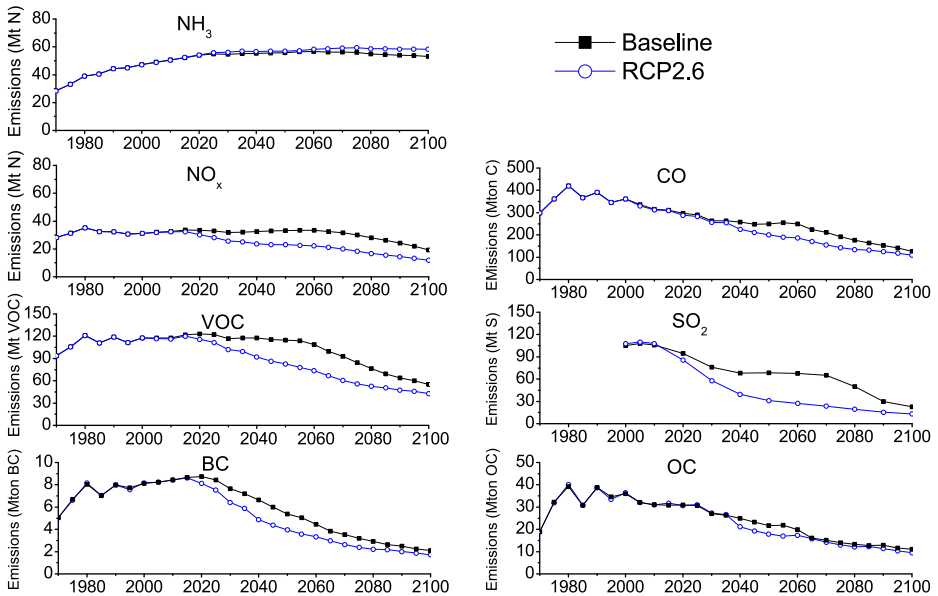


Fig. 6 Trends in emissions of various gases, baseline and mitigation scenario RCP2.6

the baseline, with remaining OC emissions mostly originating from savannah burning and BC emissions from the energy sector. This implies that as result of mitigation action, BC emissions are further reduced in the RCP2.6 scenario. For OC, however, these ancillary benefits of climate policy are considerably lower. In the scenario, no specific climate policy is introduced for BC and OC. As early in the century, BC emissions from energy use are still high, it would in principle be possible to further reduce these emissions.

3.2.2 Changes in radiative forcings

Figure 7 shows the radiative forcing of the baseline scenario and the RCP2.6. By far the most important contribution to increased radiative forcing compared to pre-industrial levels comes from CO_2 , both in the baseline and the mitigation case. This is despite the large emission reductions, and caused the current high emissions levels, inertia in the energy system and the long lifetime of CO_2 in the atmosphere. The relative decrease in radiative forcing between the RCP2.6 and the baseline is the highest for methane as a result of its short lifetime. For CO_2 , the total impacts on the carbon cycle are evaluated in more detail (Fig. 8). Compared to the baseline, emissions from energy and industry-related sources under the RCP2.6 scenario are reduced from more than 20 GtC/yr to slightly negative emissions (see also discussion). As a result of a lower atmospheric CO_2 concentration level, the carbon uptake by oceans and natural vegetation is also greatly reduced compared to baseline. In addition, the use of bioenergy and the reduced CO_2 fertilization effect leads to a small increase in agricultural area compared to baseline: this increases emissions from deforestation and decreases the uptake by re-growing vegetation. All in all, this implies that by the end of the century, the resulting flux of CO_2 into the atmosphere changes from nearly 12.5 GtC per year in the baseline to a negative flux in the RCP2.6 of almost 2 GtC per year (i.e. a larger uptake of CO_2 by the oceans and biosphere than the net anthropogenic emissions) leading to a decreasing CO_2 concentration.

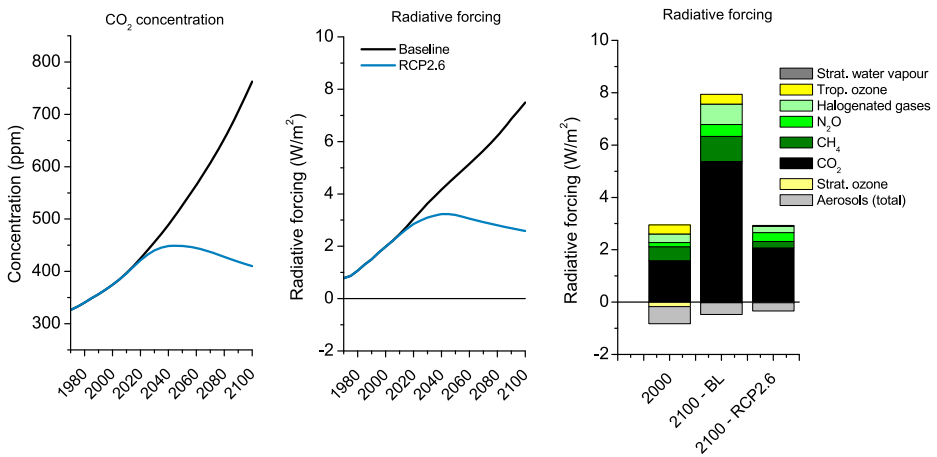


Fig. 7 Trends in radiative forcing for the baseline and mitigation scenario RCP2.6

3.2.3 Consequences for abatement costs

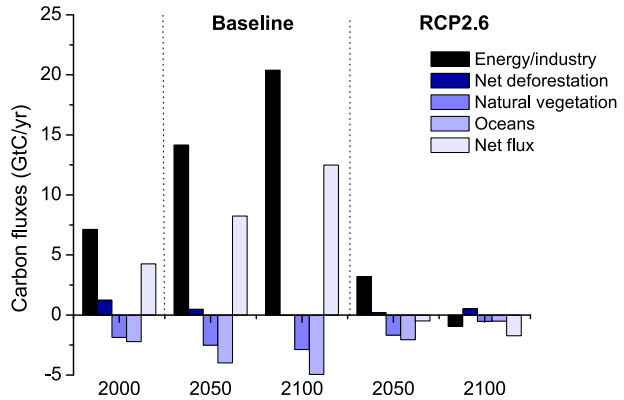
The carbon prices that would be needed to induce the changes described above rise rapidly: from around 25 USD⁶/tC (or 7 USD/tCO₂) in 2010 to slightly above 200 USD/tC (or 60 USD/tCO₂) by 2020, 300 USD/tC (or 80 USD/tCO₂) by 2030, and around 600 USD/tC (or 160 USD/tCO₂) by 2050 (Fig. 9). The marginal price, in particular, needs to rise in order to reduce emissions from less-responsive sources, such as for CO₂ emissions from transport, or for some of the non-CO₂ emissions from agricultural sources. From 2050 onwards, simulated prices stay at high levels of around 700 to 900 USD/tC (200 to 250 USD/tCO₂). The shown price path is based on minimization of the abatement costs over time within certain criteria (see Section 2). Abatement costs reach a level of around 1.7% of GDP by 2050 and decline afterwards (the latter is a result of further GDP growth and a declining share of the energy sector in total GDP). Just for comparison, these direct abatement costs are about a third of the total expenditures in the energy sector: these are, worldwide, about 4% to 5% of GDP and is expected to remain nearly constant under our baseline scenario. The climate abatement costs are also comparable to the current expenditures (as percentage of GDP) on environmental policy in the European Union, mostly for waste and waste-water management. The carbon prices calculated here are, certainly at the end of the century, lower than most models in the EMF-22 set (Clarke et al. 2010), but compare well to those in the ADAM set (all focusing at scenarios that reach 2.6 W/m² (Edenhofer et al. 2010). Comparing the costs estimates of model runs in the literature on the basis of the discounted product of the marginal carbon price and the reduced emissions show the costs of the IMAGE model run to be consistent with literature values (typically around 1–3% of GDP; but with a few exceptions of much higher costs if low technology development is assumed (Clarke et al. 2010; Edenhofer et al. 2010)).

3.2.4 Differences with the original publication

The RCP2.6 is somewhat different from the original scenario published by Van Vuuren et al. (2007a). The most important changes are: 1) the use of data on emission trends up to 2007

⁶ All prices and costs in this paper are expressed in 2005 USD.

Fig. 8 Carbon fluxes in the baseline and the mitigation scenario RCP2.6



(instead of 2000); 2) the calculation of bioenergy related non-CO₂ emissions, 3) the update of the MAGICC model, and 4) the inclusion of BC and OC emissions. The impact on the overall emission pathway are, however, small as shown by Van Vuuren et al. (2010c). The most important change is slightly lower negative emission levels at the end of the century, due to higher baseline emissions and the somewhat lower use of bioenergy. The small increase in CO₂ emissions is compensated by a slightly larger reduction in non-CO₂ gases.

3.3 Results of downscaling

The results of the emissions downscaling are shown here for CH₄ and SO₂. In 2000, high CH₄ emission intensity occurs mostly in Western Europe, Eastern China, South Asia and some parts of North and South America, coinciding mostly with major agricultural areas (Fig. 10). Under the baseline, 2050 CH₄ emissions are projected to intensify in many areas of the world and especially Asia. Under the RCP2.6, however, 2050 emissions are reduced in most areas compared to 2000 and high emission intensity areas mostly remain in Eastern and Southern Asia. For SO₂, high emission intensities for 2000 emissions are found in Europe, Eastern Asia, Eastern USA and Middle East. As a result of a combination of air pollution and climate policy SO₂ emissions are reduced considerably in many areas around

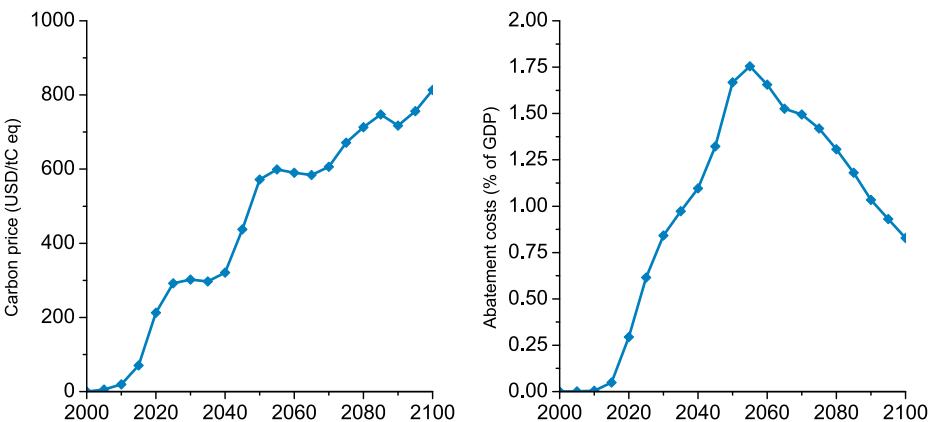


Fig. 9 Carbon price and abatement cost necessary and induced by the RCP2.6 mitigation scenario under full participation of all countries and sectors

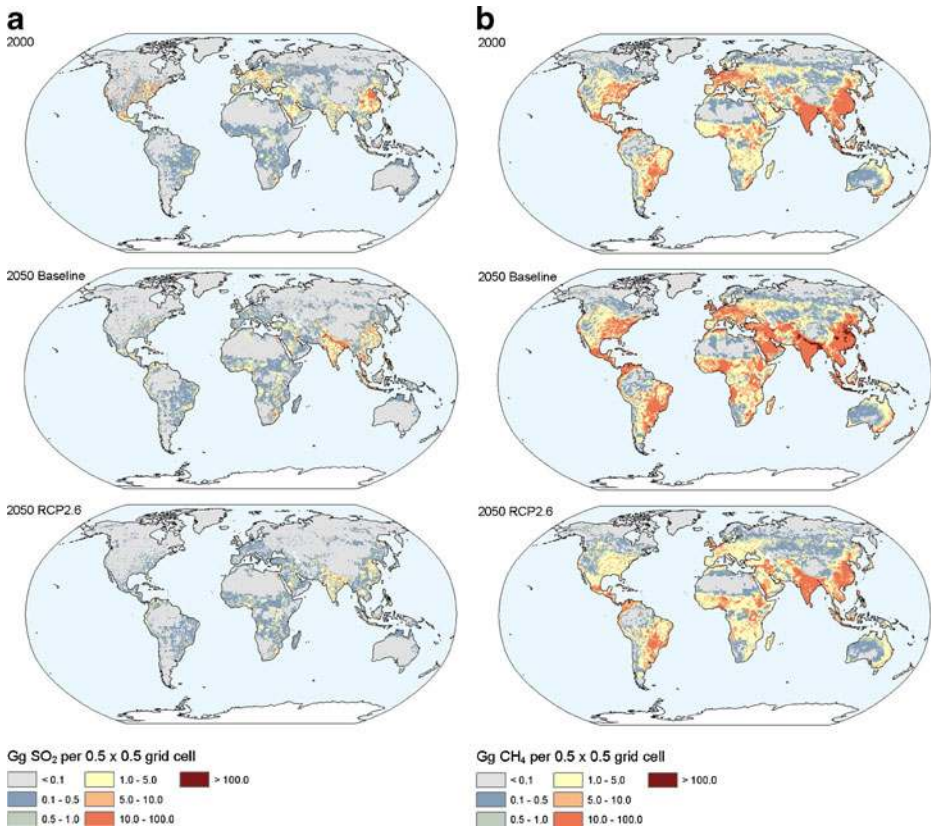


Fig. 10 Downscaling results for SO₂ (left) and CH₄ (right) emissions

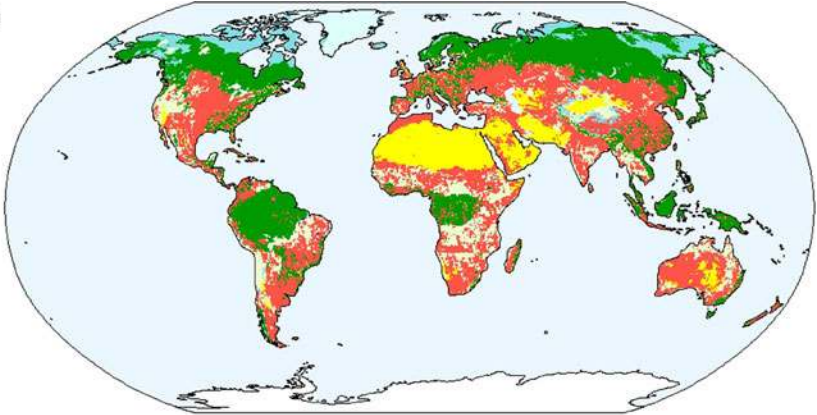
the world by 2050. In 2050, in the baseline emission intensity remain high in Asia. This is caused by the high population density, but also by the high share of coal use in this region (emission intensities decrease in China but increase in India). In the RCP2.6, in contrast, emission intensities are reduced almost everywhere and have, compared to 2000, also become more evenly distributed across the world. The changes in SO₂ emissions are relevant for environmental acidification concerns, but also for climate change, as SO₂ aerosols partly offset the radiative forcing of greenhouse gases.

The land use maps show that the projected changes in land use are only modest during the century—certainly in the absence of climate policy. However, a trend in agricultural area relocating from high income regions to low income regions can be noticed (Fig. 11). In the RCP2.6 scenario, a clear increase in bioenergy use becomes obvious also in terms of the area devoted to bioenergy. These areas occur near current agricultural areas and in particular in abandoned areas in high income regions.

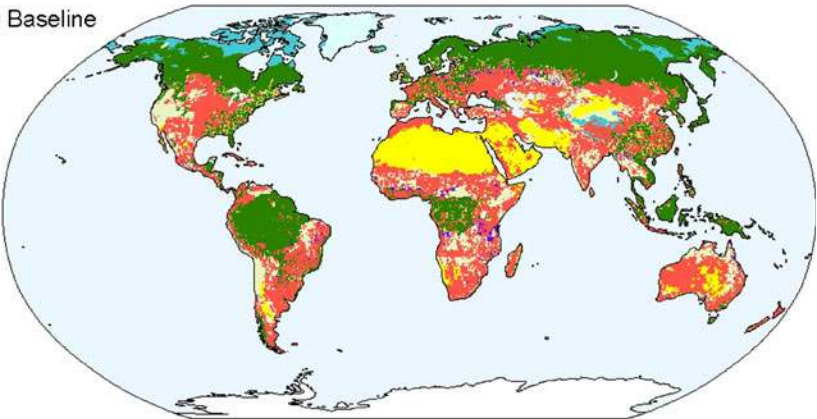
3.4 Discussion

As indicated in the previous sections, the IMAGE calculations show that it is technically possible to reach, from a medium emission baseline, an emission pathway that limits radiative forcing at 2.6 W/m² in 2100. This conclusion is consistent with other recent model

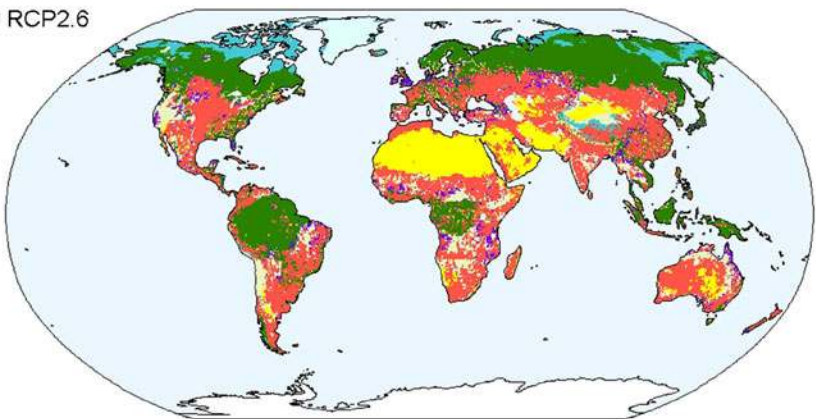
2000



2100 Baseline



2100 RCP2.6



◀ **Fig. 11** Land use trends in the baseline and RCP2.6 mitigation scenario. Please note that harmonised land use trends for all RCPs are provided as described in Hurtt et al. (2011)

studies (Clarke et al. 2010; Edenhofer et al. 2010). Both the IMAGE calculations and the current literature suggest that there are a number of key conditions that need to be met in order to achieve the required level of emission reductions.

First of all, emissions need to be reduced rapidly (around 4% of 2000 emissions annually) over a period of decades. This requires an improvement of greenhouse gas intensity of around 5–6% per year, considerably above the historical rates of around 1–2% per year. In fact, in order to avoid a too large overshoot and/or extremely rapid reduction rate requirements in the second half of the century, stringent emission reductions are already required in the current decade. In the RCP2.6, IMAGE but also most other model calculations show that global emissions need to peak around 2020 (Van Vuuren and Riahi 2011). As shown earlier in the EMF-22 model experiments, and in earlier publications of the RCP2.6, such emission reductions cannot be achieved without broadening participation beyond OECD countries in the short run (Clarke et al. 2010; Van Vuuren et al. 2010c) and certainly without the participation of important OECD countries like the USA.

Secondly, achieving the ambitious emission reductions associated with the RCP2.6 requires sufficient potential to reduce emissions for all major emission sources. In RCP2.6, CO₂ emissions from fossil fuel use are reduced by a combination of energy efficiency, increased use of renewables and nuclear power, use of carbon capture and storage and increased use of bioenergy. An important assumption is that new technologies can be implemented swiftly (limited only by the capital turnover rate) and can be rapidly transferred to different parts of the world. As the required emission reductions are close to the maximum emission reduction potential, excluding options and/or reducing their potential can easily imply that the required emission reductions cannot be achieved (Edenhofer et al. 2010; Van Vuuren et al. 2010c). Bioenergy plays an important role in this context. The option of BECCS to achieve negative emissions in the second half of the century allows avoiding even more stringent emission reductions in the short term than already included in the scenario (Azar et al. 2010; Read and Lermitt 2005). In fact, several papers have shown that excluding BECCS could easily imply that the 2.6 W/m² profile is out of reach in current models (Tavoni and Tol 2010; Van Vuuren and Riahi 2011).

Obviously, the use of BECCS is uncertain: it depends on the uncertainties related to both large-scale bioenergy use and CCS. Current literature on large scale bioenergy use indicates that there might be a potential trade-off with food production and biodiversity (Bringezu et al. 2009; Van Vuuren et al. 2010a). Therefore, large-scale bioenergy use seems only feasible if 1) the expansion of agricultural areas for food production is limited (requiring high agricultural productivity) and 2) greenhouse gas emissions associated with bioenergy use are limited. The latter above all requires that no or very little deforestation for bioenergy production occurs via indirect routes (Searchinger et al. 2008). This may be achieved by setting sustainability criteria for bioenergy production. CCS potential is also uncertain and depends on the total storage capacity that allows for safe (i.e. permanent) storage of CO₂, but also on sufficient societal support. Finally, the additional (technical) challenges related to using bioenergy in combination with CCS seem to be relatively small compared to those already associated with CCS and bioenergy individually.

The third important condition is that non-CO₂ gases are strongly reduced. An important finding of the RCP2.6 is that by 2100, most of the remaining greenhouse gas emissions are non-CO₂ gases (which obviously depends on our current estimates of reduction potentials).

In other words, further emission reduction, strongly hinges on the question whether further emission reduction can be achieved here. The IMAGE estimates of long-term non-CO₂ emission reduction have been described in detail by Lucas et al. (2007), and are based on the assumption that technical reduction potentials discussed for the next decades can be implemented by 2100. This assumption, obviously, involves major uncertainties that require further research.

Finally, baseline trends play a crucial role in the ability to reach low radiative forcing levels. Different assumptions on baseline emissions could easily lead to much higher or lower costs or even make the 2.6 W/m² target infeasible (Fisher et al. 2007b; O’Neill et al. 2010). For land-use scenarios, key uncertainties surround the development of food crop yields, and food demand. For energy, key uncertainties are related to technology development, the potential of technologies with zero/low greenhouse gas emissions and issues related to their penetration in the larger energy system. More in general, key factors include population growth and development patterns.

3.5 Alternative RCPs

We have used the IMAGE model also to construct alternative representations of the RCP4.5 and RCP6. Figure 12 shows the emissions of the IMAGE scenarios including the baseline, in comparison to the official RCPs. The emission reductions for these alternative greenhouse gas forcing targets are much lower than for 2.6 W/m² target. For the IMAGE 4.5 W/m² scenario, for instance, cumulative 21st century emissions need to be reduced by about 50% compared to baseline (compared to a reduction of more than 70% in the

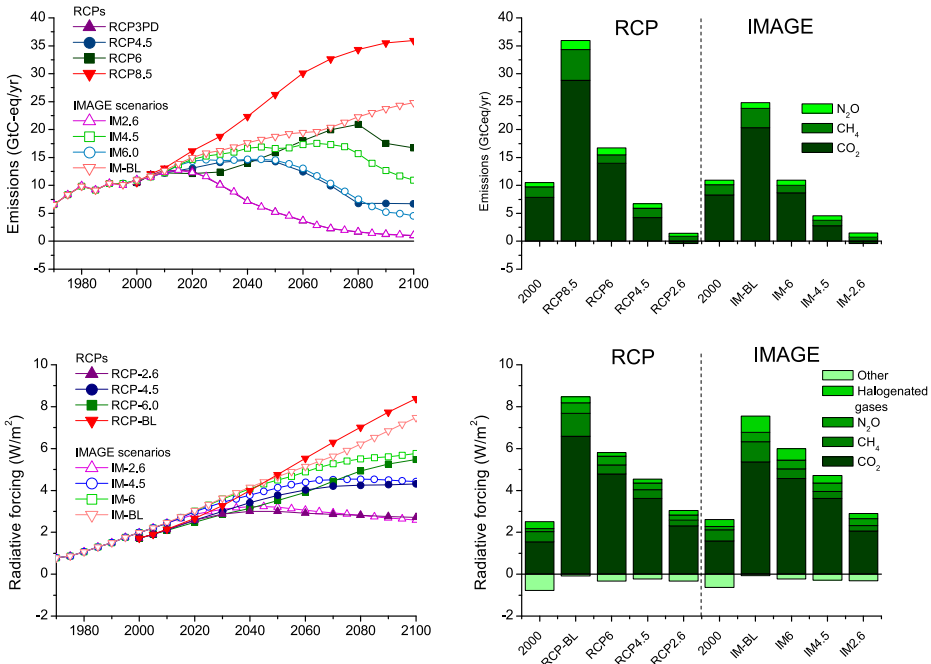


Fig. 12 Emissions and radiative forcing for the IMAGE (IM) alternative RCP scenarios (the small differences between the IM2.6 and the RCP2.6 results from the scaling with historical data as applied for greenhouse gases (Meinshausen et al. 2011))

RCP2.6). Given the lower urgency to rapidly reduce emissions, most of these reductions can take place in the second half of the century. By 2050, emission reductions are only 25% compared to baseline. In other words, short-term emission reductions strongly depend on the long-term target. The trajectory of the IMAGE 4.5 W/m² scenario compares well to the official RCP in terms of the overall reduction rate over time but also the forcing levels across different gases. The IMAGE 6 W/m² scenario follows an even more delayed emission pathway than the 4.5 W/m² case. A 6 W/m² target can be reached, even if most of the reductions are delayed to beyond 2080. Before 2080, only low costs reduction measures are taken. The emission reduction is about 50% below baseline by 2100. The trajectory of the IMAGE 6 W/m² is noticeably different from the RCP6. Emissions are higher up to 2050, but this is compensated by lower emissions after 2050. To some degree, one may expect that the flexibility in the emission pathways increases for higher forcing targets. Figure 12 also shows the trajectories for radiative forcing.⁷ The IMAGE scenarios compare well to their RCP counterparts. A noticeable difference is the higher emission for halogenated gases in IMAGE resulting from the assumed rapid increase in HFC use for air conditioning. These results also influence the RCP2.6 emission pathway.

4 Conclusions and recommendations for further research

The IMAGE calculations show that it is technically feasible to reach low radiative forcing levels (2.6 W/m²) by 2100. However, there are several key assumptions that are important in achieving such a low level. The calculations show that it is possible to reach radiative forcing levels that are consistent with expected temperature level by 2100 in the range of 1.5–2°C temperature increase (based on current estimates of climate sensitivity). These results are also confirmed by calculations with other integrated assessment models. The calculations, however, also show that several key conditions need to be met, such as broad participation of countries and sectors in the reductions, optimistic assumptions on mitigation potential, and BECCS contribution.

There are several key questions with respect to the feasibility of low stabilization scenarios; new work based on RCP2.6 might help exploring these questions.

- The rates of emission reduction that are required go far beyond historically achieved rates. A key question is how such a rate of reduction can be achieved over a long time period in terms of political and societal support and governance structures (Knopf et al. 2010). Research may help to identify pathways and financing structures that could be acceptable for the parties involved in the current climate negotiations.
- Our work has also shown that emission reductions for CO₂ go considerably beyond those of non-CO₂ gases. For several key sources of non-CO₂ gas emissions, emission reduction potential is limited. The achievability of low greenhouse gas concentration levels can be considerably increased if there is more potential to reduce non-CO₂ emissions. Reducing non-CO₂ emissions (such as CH₄ and BC) may also be attractive for reasons of air pollution.
- It is interesting to look further into the question how the feasibility of reaching low concentration levels depends on technology and reduction potential assumptions. For

⁷ The radiative forcing levels for the RCPs have been taken from RCP database at <http://www.iiasa.ac.at/web-apps/tnt/RcpDb/>. There is a slight difference in the definition of radiative forcing as the website uses the so-called effective radiative forcing as calculated by MAGICC6. Both the IMAGE and RCP forcing exclude mineral dust and the effect of land albedo.

instance, researchers may look into the question how much bioenergy is needed in models to still achieve a 2.6 W/m^2 target and/or what direct and indirect emissions of bioenergy are still acceptable.

- The mitigation measures considered in most low greenhouse gas stabilization scenarios focus on reducing emissions by means of alternative technologies. Only indirectly and implicitly lifestyle changes are considered included in efficiency improvements and/or macro-economic changes. Studies have shown that some non-technical measures may be effective in reducing emissions (Stehfest et al. 2009). A key question, however, is whether such measures are politically feasible.
- Nearly all calculations on low greenhouse gas scenarios have currently been done using simple climate models. The currently planned calculations of the RCP2.6 scenario using complex climate models may provide important insights into the question whether the reversal in radiative forcing trend (peak and decline) can actually be achieved in light of the more complex dynamics included in these models.

Open Access This article is distributed under the terms of the Creative Commons Attribution Noncommercial License which permits any noncommercial use, distribution, and reproduction in any medium, provided the original author(s) and source are credited.

References

- Alcamo J, Van Vuuren D, Ringler C, Cramer W, Masui T et al. (2005) Changes in nature's balance sheet: model-based estimates of future worldwide ecosystem services. *Ecology and society* 10 (2)
- Azar C, Lindgren K, Larson E, Möllersten K (2006) Carbon capture and storage from fossil fuels and biomass—costs and potential role in stabilizing the atmosphere. *Clim Change* 74:47–79
- Azar C, Lindgren K, Obersteiner M, Riahi K, Van Vuuren DP et al (2010) The feasibility of low CO_2 concentration targets and the role of bio-energy carbon-capture and storage. *Climatic Change* 100 (1):195–202
- Bouwman AF, Kram T, Klein Goldewijk K (eds) (2006) Integrated modelling of global environmental change. An overview of IMAGE 2.4, Publication 500110002/2006, Netherlands Environmental Assessment Agency, Bilthoven, p. 228
- Bringezu S, Schütz H, O'Brien M, Kauppi L, Howarth RW et al (2009) Assessing biofuels. UNEP—International Panel for Sustainable Resource Management, France
- Calvin K, Edmonds J, Bond-Lamberty B, Clarke L, Kim SH et al (2009) 2.6: limiting climate change to 450 ppm CO_2 equivalent in the 21st century. *Energ Econ* 31:S107–S120
- Carpenter S, Pingali P (2006) *Ecosystems and human wellbeing: scenarios*. Island Press, Wasington DC
- Clarke L, Edmonds J, Krey V, Richels R, Rose S et al (2009) International climate policy architectures: overview of the EMF 22 international scenarios. *Energ Econ* 31:S64–S81
- Clarke L, Edmonds J, Krey V, Richels R, Rose S et al (2010) International climate policy architectures: overview of the EMF 22 international scenarios. *Energ Econ* 31(suppl 2):S64–S81
- Crutzen PJ, Mosier AR, Smith KA, Winiwarter W (2007) N_2O release from agro-biofuel production negates global warming reduction by replacing fossil fuels. *Atmos Chem Phys Discuss* 7:11191–11205
- den Elzen MGJ, Van Vuuren DP (2007) Peaking profiles for achieving long-term temperature targets with more likelihood at lower costs. *PNAS* 104:17931–17936
- den Elzen M, Meinshausen M, Van Vuuren D (2007) Multi-gas emission envelopes to meet greenhouse gas concentration targets: costs versus certainty of limiting temperature increase. *Global Environ Change* 17:260–280
- Edenhofer O, Knopf B, Barker T, Baumstark L, Bellevrat E et al (2010) The economics of low stabilization: model comparison of mitigation strategies and costs. *Energ J* 31:11–48
- Fisher B, Nakicenovic N, Alfsen K, Corfee Morlot J, de la Chesnaye F et al (2007a) Issues related to mitigation in the long-term context. In: Metz B, Davidson O, Bosch P, Dave R, Meyer L (eds) *Climate*

- change 2007. Mitigation of climate change. Contribution of working group III to the fourth assessment report of the intergovernmental panel on climate change. Cambridge University Press, New York, pp 169–250
- Fisher B, Nakicenovic N, Alfsen K, Corfee Morlot J, De la Chesnaye F et al (2007b) Issues related to mitigation in the long-term context. In: Metz B, Davidson O, Bosch P, Dave R, Meyer L (eds) *Climate Change 2007—mitigation*. Cambridge University Press, Cambridge
- Granier C, Bessagnet B, Bond T, D’Angiola A, van der Gon HG et al (2011) Evolution of anthropogenic and biomass burning emissions at global and regional scales during the 1980–2010 period. *Clim Change*. This Issue
- Harnisch J, Klaus S, Wartmann S, Rhiemeier JM (2009) Development of F-gas module for TIMER model. ECOFYS, Nuremberg
- Houghton RA (2008) Carbon flux to the atmosphere from land-use changes: 1850–2005. *TRENDS: a compendium of data on global change*. Carbon dioxide information analysis center, Oak Ridge National Laboratory, U.S. Department of Energy, Oak Ridge, Tenn., USA
- Hurt G, Chini L, Frolking S, Betts R, Edmonds J, Feddema J, Fisher G, Goldewijk KK, Hibbard KA, 823 Houghton R et al (2011) Land use Change and earth system dynamics. *Climatic Change*. This Issue.
- IPCC (2007) Report of the 26th session of the IPCC. Bangkok. April 30– May 4 2007. Intergovernmental Panel on Climate Change, Geneva, Switzerland
- Kaya (1989) Impacts of carbon dioxide emissions on GWP: interpretation of proposed scenarios. IPCC/Response Strategies Working Group, Geneva
- Klein Goldewijk K, Beusen A, de Vos M, van Drecht G (2011) The HYDE 3.1 spatially explicit database of human induced land use change over the past 12,000 years *Global Ecology and Biogeography* 20(1):73–86
- Knopf B, Edenhofer O, Flachslund C, Kok MTJ, Lotze-Campen H et al (2010) Managing the low-carbon transition—From model results to policies. *Energ J* 31:223–245
- Lucas PL, Van Vuuren DP, Olivier JGJ, Den Elzen MGJ (2007) Long-term reduction potential of non-CO2 greenhouse gases. *Environ Sci Pol* 10:85–103
- Masui T, Matsumoto K, Hijioka Y, Kinoshita T, Nozawa T et al (2011) A emission pathway to stabilize at 6W/m² of radiative forcing. *Clim Change*. This Issue
- Meinshausen M, Hare B, Wigley TML, Van Vuuren D, Den Elzen MGJ et al (2006) Multi-gas emissions pathways to meet climate targets. *Clim Change* 75:151–194
- Meinshausen M, Raper SCB, Wigley TML (2008) Emulating IPCC AR4 atmosphere-ocean and carbon cycle models for projecting global-mean, hemispheric and land/ocean temperatures: MAGICC 6.0. *Atmos Chem Phys Discuss* 8:6153–6272
- Meinshausen M, Smith SJ, Calvin K, Daniel JS, Kainuma MLT et al (2011) The RCP greenhouse gas concentrations and their extensions from 1765 to 2300. *Clim Change*. This Issue
- Moss R, Babiker M, Brinkman S, Calvo E, Carter T et al (2008) Towards new scenarios for analysis of emissions, climate change, impacts, and response strategies. IPCC Expert Meeting Report on New Scenarios. Intergovernmental Panel on Climate Change, Noordwijkerhout
- Moss RH, Edmonds JA, Hibbard KA, Manning MR, Rose SK et al (2010) The next generation of scenarios for climate change research and assessment. *Nature* 463:747–756
- Nakicenovic N, Swart R (eds) (2000) Special report on emissions scenarios (SRES). Cambridge University Press, Cambridge
- O’Neill B, Riahi K, Keppo I (2010) Mitigation implications of midcentury targets that preserve long-term climate policy options. *Proc Natl Acad Sci*. doi:10.1073/pnas.0903797106
- Olivier JGJ, Berdowski JM, Peters JAHW, Bakker J, Visschedijk AJH et al (2001) Applications of EDGAR. Including a description of EDGAR V3.0: reference database with trend data for 1970–1995. National Institute of Public Health and the Environment (RIVM)/Netherlands Organization for Applied Scientific Research (TNO), Bilthoven, The Netherlands
- Rao S, Riahi K, Stehfest E, Van Vuuren DP, Cheolhung C et al (2008) IMAGE and MESSAGE scenarios limiting GHG concentration to low levels. IIASA, Laxenbourg
- Read P, Lermitt J (2005) Bio-energy with carbon storage (BECS): a sequential decision approach to the threat of abrupt climate change. *Energy* 30:2654–2671
- Riahi K, Grübler A, Nakicenovic N (2007) Scenarios of long-term socio-economic and environmental development under climate stabilization. *Technol Forecast Soc Change* 74:887–935
- Riahi K, Krey V, Rao S, Chirkov V, Fischer G et al (2011) RCP-8.5: exploring the consequence of high emission trajectories. *Clim Change*. This Issue
- Rose S, Ahammad H, Eickhout B, Fisher B, Kurosawa A et al (2011) Land-based mitigation in climate stabilization. *Energ Econ*. (accepted for publication)
- Schlesinger ME, Malyshev S, Rozanov EV, Yang F, Andronova NG et al (2000) Geographical distributions of temperature change for scenarios of greenhouse gas and sulphur dioxide emissions. *Technological Forecasting and Social Change* 65(2):167–193

- Searchinger T, Heimlich R, Houghton RA, Dong F, Elobeid A et al (2008) Use of U.S. croplands for biofuels increases greenhouse gases through emissions from land-use change. *Science* 319:1238–1240
- Smeets EMW, Bouwman LF, Stehfest E, Van Vuuren DP, Posthuma A (2009) Contribution of N₂O to the greenhouse gas balance of first-generation biofuels. *Global Change Biol* 15:1–23
- Smith P, Gregory PJ, Van Vuuren DP, Obersteiner M, Havlik P et al (2010) Competition for land. *Phil Trans Roy Soc Lond B Biol Sci* 365:2941–2957
- Stehfest E, Bouwman L, Van Vuuren DP, Den Elzen MGJ, Eickhout B et al (2009) Climate benefits of changing diet. *Clim Change* 95:83–102
- Tavoni M, Tol R (2010) Counting only the hits? The risk of underestimating the costs of stringent climate policy. *Clim Change* 100:769–778
- Thomson AM, Calvin KV, Smith SJ, Kyle GP, Volke A et al (2011) RCP4.5: a pathway for stabilization of radiative forcing by 2100. *Clim Change. This Issue*
- UN (2004) World population prospects: the 2004 revision. United Nations—Department for Economic and Social Information and Policy Analysis, New York
- Van Ruijven B, Van Vuuren DP, de Vries B (2007) The potential role of hydrogen in energy systems with and without climate policy. *Int J Hydrogen Energ* 32:1655–1672
- Van Vuuren DP, Riahi K (2011) The relationship between short-term emissions and long-term concentration targets—a letter. *Clim Change* 104(3–4):793–801
- Van Vuuren DP, Eickhout B, Lucas PL, den Elzen MGJ (2006) Long-term multi-gas scenarios to stabilise radiative forcing—exploring costs and benefits within an integrated assessment framework. *Energ J* 27:201–233
- Van Vuuren DP, Den Elzen MGJ, Lucas PL, Eickhout B, Strengers BJ et al (2007a) Stabilizing greenhouse gas concentrations at low levels: an assessment of reduction strategies and costs. *Clim Change* 81:119–159
- Van Vuuren DP, Lucas PL, Hilderink H (2007b) Downscaling drivers of global environmental change: enabling use of global SRES scenarios at the national and grid levels. *Global Environ Change* 17:114–130
- Van Vuuren DP, Bellevrat E, Kitous A, Isaac M (2010a) Bio-energy use and low stabilization scenarios. *Energ J* 31:193–222
- Van Vuuren DP, Edmonds J, Thomson A, Riahi K, Kainuma M et al (2010b) Representative concentration pathways: an overview. *Clim Change* (this issue)
- Van Vuuren DP, Stehfest E, den Elzen MGJ, van Vliet J, Isaac M (2010c) Exploring IMAGE model scenarios that keep greenhouse gas radiative forcing below 3 W/m² in 2100. *Energ Econ* 32:1105–1120
- Van Vuuren DP, Edmonds J, Kainuma M, Riahi K, Thomson A, Hibbard K, Hurtt GC, Kram T, Krey V, Lamarque JF, Masui T, Meinshausen M, Nakicenovic N, Smith SJ, Rose SK (2011) The representative concentration pathways: an overview. *Climatic Change. This Issue*
- Weyant JP, de la Chesnaye FC, Blanford GJ (2007) Overview of EMF21: multigas mitigation and climate policy. *The Energy Journal Special issue #3*:1–32
- Wigley TML (2003) MAGICC/SCENGEN 4.1: technical manual. UCAR—Climate and Global Dynamics Division, Boulder, CO