

 Open access • Journal Article • DOI:10.1121/1.2799913

Reconstruction of Rayleigh Lamb dispersion spectrum based on noise obtained from an air-jet forcing — [Source link](#)

[Eric Larose](#), [Philippe Roux](#), [Michel Campillo](#)

Published on: 01 Dec 2007 - [Journal of the Acoustical Society of America](#) (Acoustical Society of America)

Topics: [Rayleigh wave](#), [Lamb waves](#), [Dispersion \(water waves\)](#), [Noise](#) and [Impulse response](#)

Related papers:

- [High-resolution surface-wave tomography from ambient seismic noise.](#)
- [On the emergence of the Green's function in the correlations of a diffuse field](#)
- [Long-range correlations in the diffuse seismic coda.](#)
- [Emergence of broadband Rayleigh waves from correlations of the ambient seismic noise.](#)
- [Surface wave tomography from microseisms in Southern California](#)

Share this paper:    

View more about this paper here: <https://typeset.io/papers/reconstruction-of-rayleigh-lamb-dispersion-spectrum-based-on-3gu8dh7dh3>



HAL
open science

Reconstruction of Rayleigh-Lamb dispersion spectrum based on noise obtained from an air-jet forcing

Éric Larose, Philippe Roux, Michel Campillo

► **To cite this version:**

Éric Larose, Philippe Roux, Michel Campillo. Reconstruction of Rayleigh-Lamb dispersion spectrum based on noise obtained from an air-jet forcing. *Journal of the Acoustical Society of America*, Acoustical Society of America, 2007, 122 (6), pp.3437. hal-00175909

HAL Id: hal-00175909

<https://hal.archives-ouvertes.fr/hal-00175909>

Submitted on 1 Oct 2007

HAL is a multi-disciplinary open access archive for the deposit and dissemination of scientific research documents, whether they are published or not. The documents may come from teaching and research institutions in France or abroad, or from public or private research centers.

L'archive ouverte pluridisciplinaire **HAL**, est destinée au dépôt et à la diffusion de documents scientifiques de niveau recherche, publiés ou non, émanant des établissements d'enseignement et de recherche français ou étrangers, des laboratoires publics ou privés.

Reconstruction of Rayleigh-Lamb dispersion spectrum based on noise obtained from an air-jet forcing

Eric LAROSE, Philippe ROUX, and Michel CAMPILLO

Lab. de Géophysique Interne et Tectonophysique, Université J. Fourier & CNRS, BP53, 38041 Grenoble, France. Email: eric.larose@ujf-grenoble.fr

(Dated: October 1, 2007)

The time-domain cross-correlation of incoherent and random noise recorded by a series of passive sensors contains the impulse response of the medium between these sensors. By using noise generated by a can of compressed air sprayed on the surface of a plexiglass plate, we are able to reconstruct not only the time of flight but the whole waveforms between the sensors. From the reconstruction of the direct A_0 and S_0 waves, we derive the dispersion curves of the flexural waves, thus estimating the mechanical properties of the material without a conventional electromechanical source. The dense array of receivers employed here allow a precise frequency-wavenumber study of flexural waves, along with a thorough evaluation of the rate of convergence of the correlation with respect to the record length, the frequency, and the distance between the receivers. The reconstruction of the actual amplitude and attenuation of the impulse response is also addressed in this paper.

(accepted for publication in J. Acoust. Soc. Am. 2007)

I. INTRODUCTION

Elastic waves at kHz and MHz frequencies are widely used to evaluate the mechanical properties of structures, material and tissues. In plates and shells, the elastic wave equation admits specific propagation modes, denoted Lamb waves [Royer and Dieulesaint (2000); Viktorov (1967)], which are related to the traction free condition on both sides of the medium. Depending on the purpose of the experiment, different measurement configurations have been proposed. From the dispersion of Lamb waves, obtained from pitch-catch measures repeated for different ranges, one has access to the velocities of bulk waves and to the thickness of the plate (see for instance Gao *et al.* (2003)). Other pulse-echo (or impact-echo) techniques have been proposed to assess the mechanical properties of the plate, based on the simple and multiple reflection of bulk waves within the plate [Krautkrämer and Krautkrämer (1990)] or on the resonance of high order Lamb modes [Clorennec *et al.* (2007)]. Some studies also concern the dynamic evaluation of fatigue and/or crack growth (see for instance Ihn and Chang (2004); Ing and Fink (1996)). In this last application, several impulse responses of the medium are acquired at different dates and are eventually compared to each others to monitor the medium.

All these techniques require the use of controlled sources and receivers. In the following, they are referred to as "active" experiments. Another idea has undergone a large development after the seminal experiments of Weaver and Lobkis (2001) (see for instance the review of Wapenaar and Fokkema (2006), Weaver and Lobkis (2006) or Larose (2006)). By cross-correlating the incoherent noise recorded by two passive sensors, Weaver and Lobkis demonstrated that one could reconstruct the impulse response of the medium as if a source was placed at one sensor. This noise correlation technique (also referred to as "passive imaging", or "seismic interferometry" [Schuster *et al.* (2004)]) requires the use of synchronized sensors, and has the advantage of eliminating any controlled source.

In section II of our paper, we compare the dispersion curves of flexural waves (Lamb waves in the low frequency regime) in a plexiglass plate obtained by an active (pitch-catch) experiment to the ones obtained in a passive experiment. During the passive acquisition, we deployed synchronised receivers only, and used a random noise source: a 1 mm thick high pressure air jet produced by a can of compressed air [McBride and Hutchison (1976)]. The experiment conducted in a plexiglass plate show at the same time: dispersive (A_0) and non dispersive (S_0) waves, reverberations, and absorption. Since the earth's crust has similar properties for seismic waves, we believe that a plexiglass plate at kHz frequencies is a good candidate to built small scale seismic analogous experiments. The question of reconstructing not only the phase, but also the amplitude of the wave is addressed at the end of part II. This is of interest in seismology, where the role of absorption and attenuation in the correlation has not yet been subject to experimental investigation. In section III, we analyze the rate of convergence of the correlations to the real impulse response. The role of the record length, the central frequency, and the distance between the receivers is investigated.

II. EXPERIMENTAL SETUP AND DISPERSION CURVES

To study actively and passively the dispersion of flexural waves, we built a laboratory experiment using a $1.5m \times 1.5m$ large, 0.6 cm thick plexiglass plate. The plate is laid on an open steel frame that supports the edges of the plate but

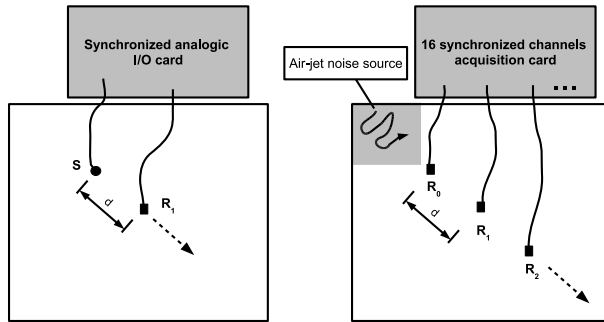


FIG. 1. Experimental setup. (a) In the active experiment (pitch-catch configuration), a broadband piezoelectric source S emits a chirp that is sensed by a vertical accelerometer R placed at a distance d . (b) In the passive experiment, a turbulent jet produced by a can of compressed air generates a white random noise recorded simultaneously at all sensors R_i . The jet is randomly sprayed over the area in gray.

leaves free the upper and lower sides. The traction-free condition is therefore achieved on both horizontal sides. The resulting dispersion relation that connects the pulsation ω and the wave-vector k reads:

$$\frac{\omega^4}{c_s^4} = 4k^2q^2 \left(1 - \frac{p \tan(ph/2 + \gamma)}{q \tan(qh/2 + \gamma)} \right) \quad (1)$$

where $p^2 = \frac{\omega^2}{c_p^2} - k^2$ and $q^2 = \frac{\omega^2}{c_s^2} - k^2$; c_s (resp. c_p) is the shear (resp. compressional) velocity, and h is the thickness of the plate. The parameter γ equals 0 for symmetric (S) modes, and $\pi/2$ for anti-symmetric (A) modes. In the low frequency regime, only two modes are solutions: they are labeled A_0 and S_0 .

For both acquisitions we used broad-band miniature (3 mm radius) accelerometers (ref.# 4518 from Bruel&Kjaer). They show a flat response in the 20 Hz-70 kHz frequency range. We fixed our accelerometers on our plate using a hot chemical glue (phenyl-salicylic acid) that solidifies with cooling (below 43°C).

A. Active experiment

In the active experiment, a source S (a piezoelectric polymer) is in a corner of the plate, approximately 30 cm from each side and is emitting a 3 s chirp $s(t)$ in a linear range of frequencies f from 1 kHz to 60 kHz. A receiver R is initially placed at $d = 1$ cm away from the source toward the center of the plate on a straight graduated line. After each acquisition, we moved the receiver a centimeter away from the source down the diagonal; we repeated this operation 100 times to cover 100 cm of the plate. The dynamic impulse response $h_d(t)$ of the plate is reconstructed for each distance d by correlating the record $r_d(t)$ by the source chirp:

$$h_d(t) = r_d(t) \times s(t) \quad (2)$$

As an example, impulse responses obtained for three different distances $d = 10, 40, 80$ cm are displayed in Fig. 2. The dispersive A_0 mode is dominating the record (a), but the non-dispersive S_0 wave (b) and reverberations from the edges of the plate (c) are also visible. The transit time in the plate is of the order of a few milliseconds. The absorption time of the plate that strongly depends on the frequency is of the order of a few hundreds of milliseconds. The signal-to noise in the experiment do not allow to record more than a few tens of millisecond. Records are therefore dominated by ballistic waves, but waves reverberated from the plate boundaries are also visible.

From the set of 100 impulse responses $h_d(t)$, a spatio-temporal Fourier (f-k) transform was applied. The resulting dispersion curves are displayed in Fig. 3, showing the dispersive A_0 mode and the weaker non-dispersive S_0 mode. Theoretical dispersion curves are numerically obtained after Eq. 1 (dots), they perfectly fit the experimental data for $c_p = 3130$ m/s and $c_s = 1310$ m/s. The dispersion curves are widely used to evaluate the mechanical properties of the plate, including thickness, presence of flaws... Nevertheless, the source-receiver configuration is sometimes at a disadvantage. As mentioned in the introduction, instead of using the conventional source-receiver configuration, it is possible to take advantage of random elastic noise to reconstruct the impulse response $h_d(t)$ between two sensors.

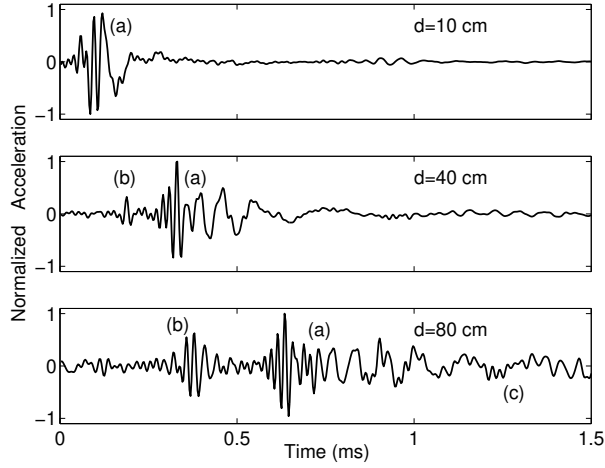


FIG. 2. Source-receiver impulse response $h_d(t)$ for different distances d . (a) Dispersive anti-symmetric A_0 mode propagating at velocities approximately ranging from 150 to 900 m/s. (b) Non-dispersive S_0 mode propagating at ≈ 2400 m/s. (c) Reflexions from surrounding edges.

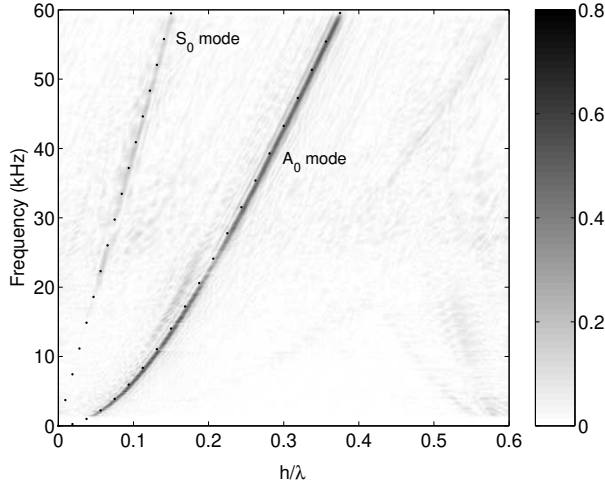


FIG. 3. f-k transform of the source-receiver impulse responses. X-axis: dimensionless wavenumber (h is the slab thickness). Dots are theoretical solutions of Eq. 1.

This is performed in the following section.

B. Passive experiment

In the passive experiment, we removed the source and placed 16 receivers separated by 7 cm from each other on the graduated line. At the former position of the source, we placed the accelerometer R_0 that was kept fixed all through the experiment. As proposed by Sabra *et al.* (2007), we used the noise generated by a turbulent flow. As a noise source, we employed a dry air blower. Note that, contrary to Sabra's work, our source was easy-to-handle. During the experiment, it was randomly moved to cover a $30 \text{ cm} \times 30 \text{ cm}$ large area located between the corner of the plate and the former active source. Note that the precise knowledge of the noise source is not necessary in the passive experiment. We also deployed an array of 16 receivers that allow for precise frequency-wave number analysis, and worked at higher frequencies, meaning a much thinner spatial resolution. We focused our attention on the A_0 and S_0 direct arrivals. Since we want to reconstruct direct waves, we chose to spray only at one end of the array of receivers (end-fire lobes described by Roux *et al.* (2004) or coherent zones described by Larose (2006)). Nevertheless, spraying

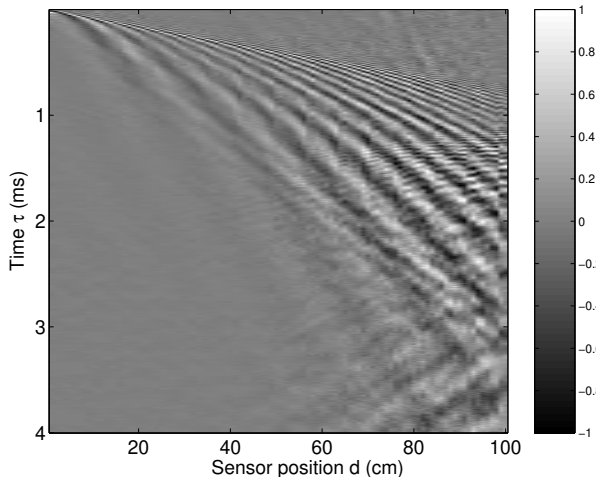


FIG. 4. Passively reconstructed impulse responses (linear color bar, normalized amplitude).

elsewhere gives the same waveforms but requires much more data, thus much longer acquisitions (see section III).

The noise in the plate was created by spraying continuously for approximately $T=10$ s. The 16 receivers recorded synchronously this 10 s noise sequence, each record is labeled after its distance d from R_0 . Then receivers R_1 to R_{15} were translated one centimeter down the graduated line and the 10 s acquisition performed again. This operation was repeated seven times to cover the 100 cm of the diagonal with a pitch of 1 cm. We ended with a set of 106 $r_{d=0..105}(t)$ records. The time domain cross-correlation between the receiver R_0 and the other receivers is processed afterward:

$$C_i(\tau) = \int_0^T r_0(t)r_i(t + \tau)dt. \quad (3)$$

As mentioned in the introduction, this cross-correlation $C_d(\tau)$ is very similar to the impulse response $h_d(t)$ obtained in the pitch-catch experiment. Strictly speaking, the impulse response equals the time-derivative of the cross-correlation convolved by the source spectrum (which is almost flat here). Nevertheless, the time-derivative operation was not performed here since it does not change the spatio-temporal Fourier transform of the data. The series of 100 correlations is displayed in Fig. 4 as a time-distance plot. The dispersive A_0 mode is clearly visible, including reverberations at the edges. The symmetric S_0 mode is very weak and almost invisible in this figure. In the passive experiment, the size of the noise source is ≈ 1 mm large, which is quasi-punctual compared to the A_0 and S_0 wavelength. In that case, and taking into account the large difference in phase velocities, the energy ratio is clearly in favour of the A_0 mode, the S_0 mode is much weaker (and additionally less converged). In the active experiment the source was 6 mm large, thus exciting the S_0 mode more strongly and the S_0 mode was more visible in Fig.3.

Like in the active experiment, we computed the spatio-temporal Fourier transform of the set of 100 traces $C_d(\tau)$. The resulting dispersion curves are plotted in Fig. 5. The A_0 mode is clearly reconstructed, the agreement between the active, passive, and theoretical dispersion curves is perfect. Ghosts are also visible in this figure, and are due to 1) small errors in positioning the sensors 2) the presence of reflections from the edges. As to Fig. 4, the S_0 mode is not visible. We therefore zoomed into the early part of the correlations (Fig.6-left) and muted all the data but the weak non-dispersive arrival. We then computed again the f-k transform of the data, as plotted in Fig. 6-right. The straight line that emerges from the noise is exactly the S_0 dispersion curve, thus demonstrating that the weak arrival in Fig. 6-left is indeed the S_0 mode. It is important to emphasize that the weakness of the S_0 mode is not a limitation of our correlation technique, but is connected to the noise generation.

C. Reconstruction of the amplitudes

Since now, the reconstruction of the phase (the arrival time of the wave) of the Green function by correlation of noise has been widely studied. Feeble attention was paid to the information carried by the amplitude

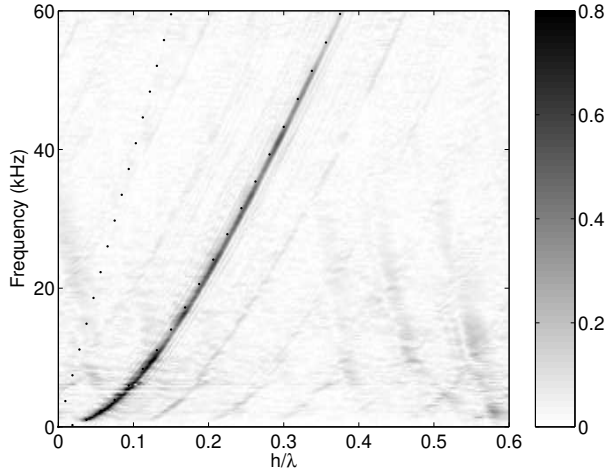


FIG. 5. Spatio-temporal (f-k) Fourier transform applied to the passive data (linear color bar, normalized amplitude). The dispersion curve of the A_0 mode is perfectly matching the active experiment. S_0 mode is very weak, probably feebly excited by the point-like noise source. The dots show the theoretical dispersion curves as obtained in the active experiment.

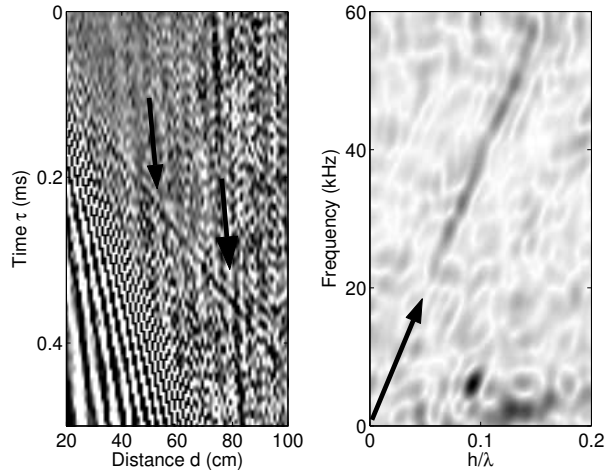


FIG. 6. Left: zoom into the early part of the passive data (saturated color bar). The non-dispersive S_0 wave is pointed by the arrows. Right: f-k transform applied to the passive data after muting the A_0 mode arrivals (set to zero). The S_0 non-dispersive mode is now visible.

of the reconstructed GF. We can report the first experiments of Weaver and Lobkis (2001) who noted that both the phase and amplitude of the signals were passively reconstructed, and also Larose *et al.* (2006) who used this amplitude information to study weak localisation without a source. In Sec. II.B, we have seen that the phase information in the passive experiment perfectly matches the active data, what about the amplitude of the wave?

To see if the amplitude decay is recovered using correlations, we plot on Fig. 7 the amplitude decay obtained with an active experiment (stars). In a homogeneous and lossless 2D plate, one would expect a decrease of the amplitude as $\propto 1/d^{0.5}$. Because of dispersion and the bandwidth used here (10 kHz), the exponent is slightly greater ($\propto 1/d^{0.6}$). To be more rigorous, absorption adds another exponential decay. From the active experiments, we found that the absorption time was about 260 ms at 60 kHz and 2000 ms at 1 kHz (similar to Safaeinili *et al.* (1996)).

On Fig. 7, we also plot the maximum of the amplitude of the correlations versus the distance d between the sensors (circles). Active and passive amplitudes are comparable: the geometrical spreading of the wave is well recovered. Nevertheless, small discrepancies are visible and are due the imperfect or irregular coupling between the sensors and the plate. Estimating the absorption in the plate from the passive data is therefore more speculative with this

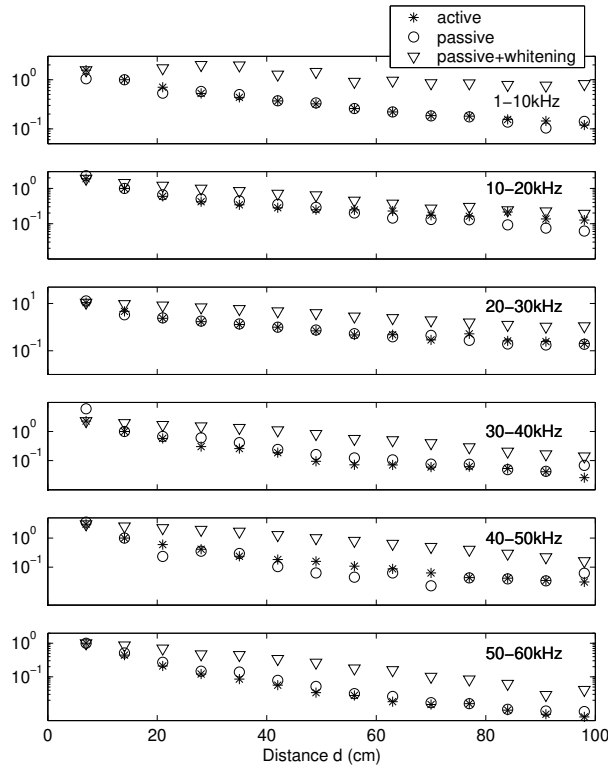


FIG. 7. Amplitude decay obtained in an active experiment (stars) and by correlation (circles) without additional processing, and with whitening (triangles). Attenuation includes geometrical spreading and absorption.

experimental setup and will be subject to further investigations.

Nevertheless, in several applications [Roux *et al.* (2004); Sabra *et al.* (2005a); Shapiro *et al.* (2005)], an operation is performed prior to the correlation in order to balance the contribution of all frequencies. The whitening operation, performed here in the 1-60 kHz frequency range, reads:

$$\tilde{r}_d(t) = IFFT \left(\frac{FFT(r_d(t))}{|FFT(r_d(t))|} \right), \quad (4)$$

then the correlation $\tilde{r}_0(t) \times \tilde{r}_d(t)$ is evaluated. We compared the active amplitude with the amplitude of the correlations using whitened data (triangles in Fig. 7). This time, though a decay in the correlation is visible, we do not recover the decay of the actual GF. Note that 1-bit processing (correlate the sign of the records, see for instance Larose *et al.* (2004)) give similar disappointing results. Since whitening (or 1-bit) does not preserve the amplitude of the records, we stress that correlations will unlikely give the actual attenuation. This is of practical interest for applications like seismology. To summarize, in order to recover the amplitude by correlating the incoherent noise, we suggest that each record be filtered in a narrow frequency band, and then correlated without additional processing. The amplitude decay would therefore be estimated for each frequency, and attenuation derived. On the other hand, the whitening (or 1-bit) processing is valuable when the only phase information is targeted (tomography for instance).

III. RATE OF CONVERGENCE OF CORRELATIONS

Several authors [Campillo and Paul (2003); Derode *et al.* (2003)] have experimentally noticed that the correlations $C_d(\tau)$ do not only contain the impulse response (the "signal") between the receivers but also show residual fluctuations that blur the weaker part of the signal. As soon as residual fluctuations are negligible compared to the reference impulse response, we consider that the correlations have converged. The convergence of correlations has been theoretically studied by Weaver and Lobkis (2005) and Sabra *et al.* (2005b). We propose here to check the validity of their predictions with our experimental data. Of course, theoretical works apply to a perfectly diffuse wavefield. Here, the

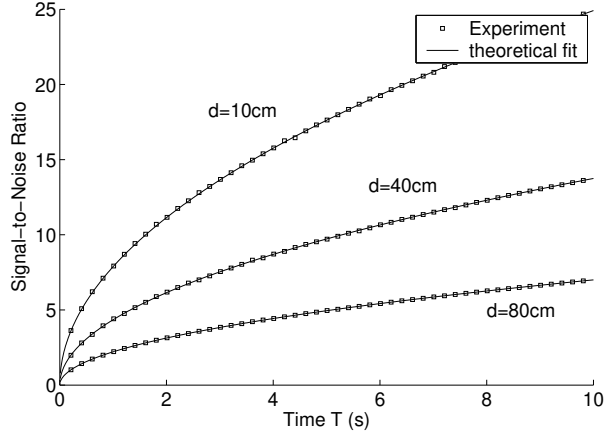


FIG. 8. Signal-to-Noise Ratio of the correlation versus the duration T of the records. The theoretical fit for each distance d is of the form $\alpha\sqrt{T}$ with α the fit parameter.

noise is generated over a delimited area. Nevertheless, as developed in section III.D, reverberations compensate the uneven distribution of source, and we believe that previous theories should apply to our experiment.

A. Convergence with time T

To evaluate the degree of convergence of the correlations toward the real impulse response between the sensors, we split each noise record into $N=1000$ sub-records. Each sub-record lasts $\delta t = 10$ ms. Correlations are processed for each sub-record and each couple of receivers $R_0 - R_d$. We then compute the amplitude of the residual fluctuations:

$$\sigma_d(N, \tau) = \sqrt{\frac{\langle C_d(\tau)^2 \rangle - \langle C_d(\tau) \rangle^2}{N-1}} \quad (5)$$

where $\langle \cdot \rangle$ represents an average over N sub-records. The fluctuations were found to vary weakly with time τ , we therefore average $\sigma_d(T = N\delta t, \tau)$ over τ to get a more robust estimation of the fluctuations $\sigma_d(T)$. To evaluate the "signal-to-noise ratio" (SNR) of the correlation, the maximum of each correlation is divided by the residual fluctuations σ_d . Experimental results are plotted in Fig. 8 for three distances d and for the whole 1-60 kHz frequency range. As noticed theoretically and experimentally by several authors [Sabra *et al.* (2005b); Weaver and Lobkis (2005)], the SNR is found to increase like:

$$SNR = \alpha\sqrt{T} \quad (6)$$

where α is the fit coefficient. This means that the longer the records, the better the reconstruction. The SNR increases as the square root of the amount of "information grain" contained in the records. This amount corresponds to the quantity $T\Delta f$ (where Δf is the frequency bandwidth) and represents the number of uncorrelated pieces of information transported by the waves [Derode *et al.* (1999); Larose *et al.* (2004)]. In our experiment, a few seconds was enough to get the direct arrival of the A_0 mode.

Another point visible in Fig. 8 is the decrease of the coefficient α with the distance d between the pair of receivers. This means that the passive reconstruction of the impulse response is harder when the receivers are far apart. This was noticed in seismology for instance [Paul *et al.* (2005); Shapiro and Campillo (2004)]. A more precise estimation of the convergence with the distance d is developed in the following subsection.

B. Convergence with distance d

To study the dependence of the convergence rate on the distance d between the passive sensors, each coefficient α was evaluated for each SNR curves (as in Fig. 8) in the 1-60 kHz frequency range. The resulting $\alpha(d)$ is plotted in

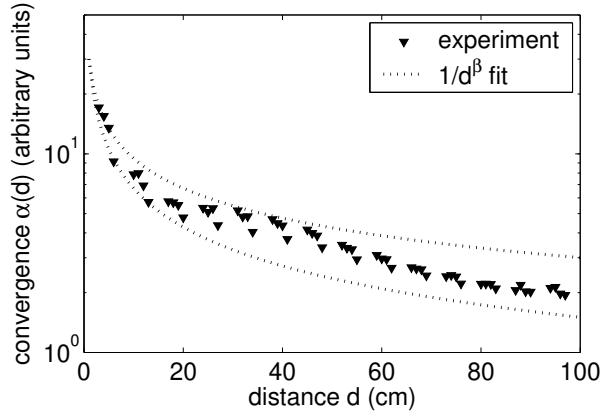


FIG. 9. The fit coefficient α of the SNR is plotted versus the distance d between the two correlated receivers.

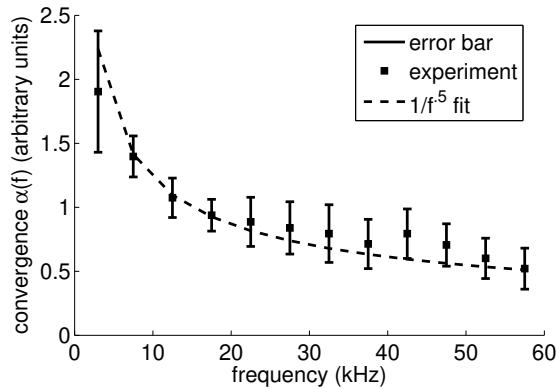


FIG. 10. The fit coefficient α of the SNR is plotted versus the central frequency f of the records.

Fig. 9 and is delimited by two theoretical curves of the form:

$$\alpha \propto 1/d^\beta. \quad (7)$$

with $0.5 < \beta < 0.65$. At first sight, our result is similar to previous theoretical works that predicted a SNR evolution as $\sqrt{1/d}$ in a 2D space. Nevertheless, the theory was developed for a non-dispersive medium, where the wave spreading factor is $\sqrt{1/d}$. In our dispersive plate, the exponent is slightly greater (≈ 0.6 , see section II.A). The SNR decay seems to be driven by the decay of the actual Green function. note that the role of the absorption can not be evaluated in our experiment, and will be subject to further investigations.

C. Convergence with frequency f

It is now commonly acknowledged that high frequencies are harder to reconstruct by cross correlation than low frequencies. We now propose to quantitatively evaluate the role of the central frequency f of the record in the rate of convergence of the correlations. To that end, we performed several whitening operations in different frequency band (every 5 kHz, ranging from 1 to 60 kHz). Fluctuations were then evaluated for each frequency band and each sub-record. The experimental SNR was fitted by $\alpha(f)\sqrt{T}$, with α the fit parameter plotted in Fig. 10. The prediction that $SNR \propto 1/\sqrt{f}$ is well recovered.

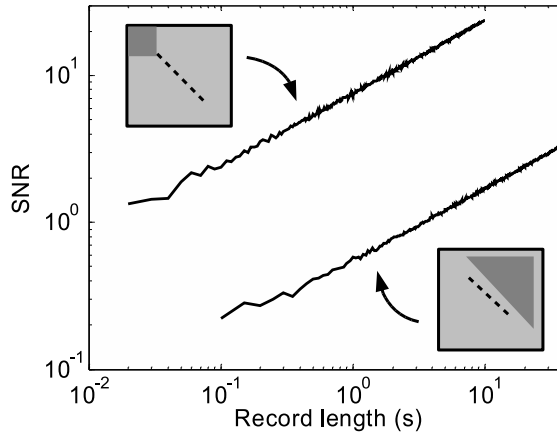


FIG. 11. Rate of convergence of the correlation (SNR) with the record time T . The air-jet is randomly sprayed over the dark gray areas, dotted line is the array of receivers. Upper left plot: sources located on the side of the array of receivers. Lower right plot: sources located in others places.

D. Convergence with the noise sources position

Several theoretical approaches have been proposed to model the reconstruction of the GF between passive sensors . Some invoke a perfect distribution of sources surrounding the medium to image [Derode *et al.* (2003); Wapenaar (2004)]. Others refer to a perfect diffuse wavefield, obtained either with scatterers or with thermal noise [Weaver and Lobkis (2001)]. Our experiment does not correspond to the first case, since the noise is generated in limited area. Does it correspond to the diffuse case? Because ballistic waves strongly dominate the records, this is not guaranteed and should be checked thoroughly!

To answer this point, we chose to spray over an area in the side of the array of receivers (see the dark gray area in Fig. 11). If only ballistic waves were present, the direct waves along the receiver line would not be reconstructed. This was not the case here: after an integration over a 35 s long record, we could reconstruct the same waveforms as in the active experiment. The only difference is the rate of convergence of the correlations: it was found to be much slower (see SNR in Fig. 11 in log-log scale). This proves the elastic wavefield to be (at least slightly) diffuse in the plate employed in the experiment. To be more precise, the ballistic and the diffusive regime coexist in our plate. Right after a noise source occurs, the propagating wave packet is in the ballistic regime. It turns into the diffusive regime after a dozen of reverberation. The first regime dominates the record; the second is weaker but not completely negligible. This last experiment is also a clear evidence that even with imperfectly diffusive wavefield, correlations of incoherent noise yield the Green function. This is of importance in applications like seismology where the medium is not always perfectly diffusive and the noise sources are not perfectly distributed. Figure 11 also demonstrates that when the reconstruction of the direct waves is expected, spraying over an area located in the direction of the array requires much less data than any other configuration.

IV. CONCLUSION AND DISCUSSION

In this article, we presented two experiments using Lamb waves detected by a series of accelerometers fixed on a plate. In the first experiment, a conventional source-receiver configuration was employed to construct the dispersion curves of the A_0 and S_0 flexural waves. In the second experiment, we only used receivers: we recorded the noise generated by a can of compressed air whose turbulent stream generates random excitations. Contrarily to an active experiment, the advantage here was that we neither needed to know the position of the noise source, nor to employ any electronics for the emission. By correlating the noise records, we reconstructed the impulse response between the sensors, and recovered the same dispersion curves as in the active experiment (except for the low frequency S_0 mode that was not excited by the thin turbulent jet).

The amplitude decay of the actual A_0 mode with distance was successfully retrieved when correlating the raw

records, but was not retrieved using either whitened or 1-bit records. This is of importance for applications where passive reconstruction of the attenuation of the media is envisioned. To summarize, whitening (or 1-bit) the data is helpful to reconstruct the phase of the GF (for imaging applications or f-k analysis), but should not be employed to reconstruct the amplitude.

Using our dense array of receivers, we also carefully studied the fluctuations of the correlations, which are connected to the rate of convergence of the correlations to the real impulse response. The Signal-to-Noise Ratio (or correlation-to-fluctuation ratio) obtained in our experiments is in agreement with previous studies [Sabra *et al.* (2005b); Weaver and Lobkis (2005)], both qualitatively and quantitatively. We showed that the reconstruction of the impulse response is better when: 1) we use long record (more data); 2) we employ close receivers; 3) we work at low frequency. The resulting SNR curves were best fitted by:

$$SNR = B \sqrt{\frac{T \Delta f c}{d^{1.1} f}} \quad (8)$$

The parameter B , as defined by Weaver and Lobkis (2005) was found to be $[0.25 \pm 0.02]$ (we take $c=350\text{m/s}$ as a mean value for A_0 mode), which is much greater than seismic experiments [Shapiro and Campillo (2004)]. This is in part due by the very uneven distribution of sources in our experiment, resulting in an anisotropic wave flux that accelerates the convergence of the correlation to the direct A_0 wave. This parameter B was found to be ten times smaller while spraying on one side of the array of receiver. Concerning the dependence with distance d , the decay matches the amplitude decay of the actual Green function. We emphasize that it is not a trivial term when dispersive waves are considered. A proper prediction for the SNR should account for the dispersion and the absorption.

Practically speaking, in the 1-60 kHz frequency range, we obtained very good reconstruction of the impulse responses ($SNR \geq 5$) for distances up to 100 cm with less than ten seconds of noise. This estimation is fast enough to be repeated continuously and provides a route for the passive monitoring of structures and materials. At seismic frequencies, correlations of ambient noise are already used to monitor active volcanoes [Breguier *et al.* (2007); Sabra *et al.* (2006); Sens-Schönfelder and Wegler (2006)]. As suggested by Sabra *et al.* (2007) in a recent paper, we foresee similar applications in the field of on board passive structural health monitoring, in noisy environments such as aircrafts or ground vehicles, and also on civil engineering structures as bridges and buildings.

ACKNOWLEDGEMENTS

We are thankful to D. Anache-Menier, P. Gouedard, Stefan Hiemer, L. Margerin, Adam Naylor, B. Van Tiggelen and R. L. Weaver for fruitful discussions and experimental help. Jean-Paul Masson is strongly acknowledged for technical help in designing the experiment. This work was funded by a french ANR "chaire d'excellence 2005" grant.

- Breguier, F., Shapiro, N. M., Campillo, M., Ferrazzini, V., Duputel, Z., Coutant, O., and Nercessian, A. (2007). "Toward forecasting volcanic eruptions using seismic noise", submitted to EPSL .
- Campillo, M. and Paul, A. (2003). "Long range correlations in the diffuse seismic coda", *Science* **299**, 547–549.
- Clorennec, D., Prada, C., and Royer, D. (2007). "Local and noncontact measurements of bulk acoustic wave velocities in thin isotropic plates and shells using zero group velocity lamb modes", *J. Appl. Phys.* **101**, 034908.
- Derode, A., Larose, E., Tanter, M., de Rosny, J., Tourin, A., Campillo, M., and Fink, M. (2003). "Recovering the Green's function from field-field correlations in an open scattering medium", *J. Acoust. Soc. Am.* **113**, 2973–2976.
- Derode, A., Tourin, A., and Fink, M. (1999). "Ultrasonic pulse compression with one-bit time reversal through multiple scattering", *J. Appl. Phys.* **85**, 6343–6352.
- Gao, W., Glorieux, C., and Thoen, J. (2003). "Laser ultrasonic study of lamb waves: determination of the thickness and velocities of a thin plate", *Int. J. Eng. Sci.* **41**, 219.
- Ihn, J.-B. and Chang, F.-K. (2004). "Detection and monitoring of hidden fatigue crack growth using a built-in piezoelectric sensor/actuator network: I. diagnostics", *Smart Mater. Struct.* **13**, 609–620.
- Ing, R. K. and Fink, M. (1996). "Time recompression of dispersive lamb waves using a time-reversal mirror- application to flaw detection in thin plates", *IEEE Ultrasonics symposium 1* **1**, 659–663.
- Krautkrämer, J. and Krautkrämer, K. (1990). *Ultrasonic testing of materials* (Springer).
- Larose, E. (2006). "Mesocopies of ultrasound and seismic waves: application to passive imaging", *Ann. Phys. Fr. (in english)* **31**.
- Larose, E., Derode, A., Campillo, M., and Fink, M. (2004). "Imaging from one-bit correlations of wideband diffuse wave fields", *J. Appl. Phys.* **95**, 8393–8399.
- Larose, E., Margerin, L., Derode, A., van Tiggelen, B., Campillo, M., Shapiro, N., Paul, A., Stehly, L., and Tanter, M. (2006). "Correlation of random wave fields: an interdisciplinary review", *Geophysics*, in press .

- McBride, S. and Hutchison, T. (1976). “Helium gas jet spectral calibration of acoustic emission transducers and systems”, *Can. J. Phys.* **54**, 1824–1830.
- Paul, A., Campillo, M., Margerin, L., Larose, E., and Derode, A. (2005). “Empirical synthesis of time-asymmetrical Green functions from the correlation of coda waves”, *J. Geophys. Res.* **110**, B08302.
- Roux, P., Kuperman, W., and the NPAL Group (2004). “Extracting coherent wave fronts from acoustic ambient noise in the ocean”, *J. Acoust. Soc. Am.* **116**, 1995–2003.
- Royer, D. and Dieulesaint, E. (2000). *Elastic waves in solids* (Springer).
- Sabra, K. G., Gerstoft, P., Roux, P., Kuperman, W. A., and Fehler, M. C. (2005a). “Surface wave tomography from microseisms in southern california”, *Geophys. Res. Lett.* **32**, L14311.
- Sabra, K. G., Roux, P., Gerstoft, P., Kuperman, W. A., and Fehler, M. C. (2006). “Extracting coherent coda arrivals from cross-correlations of long period seismic waves during the mount st. helens 2004 eruption”, *Geophys. Res. Lett.* **33**, L06313.
- Sabra, K. G., Roux, P., and Kuperman, W. A. (2005b). “Emergence rate of the time-domain green’s function from the ambient noise cross-correlation function”, *J. Acoust. Soc. Am.* **118**, 3524–3531.
- Sabra, K. G., Winkel, E. S., Bourgoyne, D. A., Elbing, B. R., Ceccio, S. L., Perlin, M., and Dowling, D. R. (2007). “Using cross correlations of turbulent flow-induced ambient vibrations to estimate the structural impulse response. application to structural health monitoring”, *J. Acoust. Soc. Am.* **121**, 1987.
- Safaeinili, A., Lobkis, O. I., and Chimenti, D. E. (1996). “Air-coupled ultrasonic estimation of viscoelastic stiffnesses in plates”, *IEEE Trans. Ultrason., Ferroelec., Freq. Contr.* **43**, 1171–1180.
- Schuster, G. T., Yu, J., Sheng, J., and Rickett, J. (2004). “Interferometric/daylight seismic imaging”, *Geophys. J. Int.* **157**, 838–852.
- Sens-Schönfelder, C. and Wegler, U. C. (2006). “Passive image interferometry and seasonal variations of seismic velocities at merapi volcano, indonesia.”, *Geophys. Res. Lett.* **33**, L21302.
- Shapiro, N. M. and Campillo, M. (2004). “Emergence of broadband rayleigh waves from correlations of the ambient seismic noise”, *Geophys. Res. Lett.* **31**, L7 614.
- Shapiro, N. M., Campillo, M., Stehly, L., and Ritzwoller, M. H. (2005). “High resolution surface wave tomography from ambient seismic noise”, *Science* **307**, 1615–1618.
- Viktorov, I. A. (1967). *Rayleigh and Lamb waves: Physical theory and applications* (Plenum).
- Wapenaar, K. (2004). “Retrieving the elastodynamic Green’s function of an arbitrary inhomogeneous medium by cross correlation”, *Phys. Rev. Lett.* **93**, 254 301.
- Wapenaar, K. and Fokkema, J. (2006). “Greens function representations for seismic interferometry”, *Geophysics* **71**, SI33–SI46.
- Weaver, R. L. and Lobkis, O. I. (2001). “Ultrasonics without a source: Thermal fluctuation correlations at MHz frequencies”, *Phys. Rev. Lett.* **87**, 134301.
- Weaver, R. L. and Lobkis, O. I. (2005). “Fluctuations in diffuse field-field correlations and the emergence of the Green’s function in open systems”, *J. Acoust. Soc. Am.* **117**, 3432–3439.
- Weaver, R. L. and Lobkis, O. I. (2006). “Diffuse fields in ultrasonics and seismology”, *Geophysics* **71**, SI5–SI9.