

Recurrent gain-of-function *USP8* mutations in Cushing's disease

Zeng-Yi Ma^{1,*}, Zhi-Jian Song^{2,*}, Jian-Hua Chen^{2,3,*}, Yong-Fei Wang^{1,*}, Shi-Qi Li^{1,*}, Liang-Fu Zhou¹, Ying Mao¹, Yi-Ming Li⁴, Rong-Gui Hu⁵, Zhao-Yun Zhang⁴, Hong-Ying Ye⁴, Ming Shen¹, Xue-Fei Shou¹, Zhi-Qiang Li², Hong Peng⁵, Qing-Zhong Wang², Dai-Zhan Zhou², Xiao-Lan Qin², Jue Ji², Jie Zheng², Hong Chen⁶, Yin Wang⁶, Dao-Ying Geng⁷, Wei-Jun Tang⁷, Chao-Wei Fu⁸, Zhi-Feng Shi¹, Yi-Chao Zhang¹, Zhao Ye¹, Wen-Qiang He¹, Qi-Lin Zhang¹, Qi-Sheng Tang¹, Rong Xie¹, Jia-Wei Shen², Zu-Jia Wen², Juan Zhou², Tao Wang⁹, Shan Huang⁹, Hui-Jia Qiu¹, Ni-Dan Qiao¹, Yi Zhang¹, Li Pan¹, Wei-Min Bao¹, Ying-Chao Liu¹⁰, Chuan-Xin Huang¹¹, Yong-Yong Shi^{2,12}, Yao Zhao¹

¹Department of Neurosurgery, Shanghai Pituitary Tumor Center, Huashan Hospital, Shanghai Medical College, Fudan University, Shanghai 200040, China; ²Bio-X Institutes, Ministry of Education Key Laboratory for the Genetics of Developmental and Neuropsychiatric Disorders, Institute of Social Cognitive and Behavioral Sciences, Shanghai Jiao Tong University, Shanghai 200030, China; ³Shanghai Key Laboratory of Psychotic Disorders, Shanghai Mental Health Center, Shanghai Jiao Tong University School of Medicine, Shanghai 200030, China; ⁴Department of Endocrinology, Huashan Hospital, Shanghai Medical College, Fudan University, Shanghai 200040, China; ⁵State Key Laboratory of Molecular Biology, Institute of Biochemistry and Cell Biology, Shanghai Institutes for Biological Sciences, Chinese Academy of Sciences, Shanghai 200031, China; ⁶Department of Neuropathology, Huashan Hospital, Shanghai Medical College, Fudan University, Shanghai 200040, China; ⁷Department of Radiology, Huashan Hospital, Shanghai Medical College, Fudan University, Shanghai 200040, China; ⁸Department of Epidemiology, School of Public Health, Fudan University, Shanghai 200032, China; ⁹Department of Neurosurgery, Shanghai 5th People's Hospital, Shanghai 200240, China; ¹⁰Department of Neurosurgery, Provincial hospital, Shandong University, Jinan, Shandong 250021, China; ¹¹Shanghai Institute of Immunology & Department of Immunobiology and Microbiology, Shanghai Jiao Tong University School of Medicine, Shanghai 200025, China; ¹²Shandong Provincial Key Laboratory of Metabolic Disease, the Affiliated Hospital of Qingdao University, Qingdao, Shandong 266003, China

Cushing's disease, also known as adrenocorticotrophic hormone (ACTH)-secreting pituitary adenomas (PAs) that cause excess cortisol production, accounts for up to 85% of corticotrophin-dependent Cushing's syndrome cases. However, the genetic alterations in this disease are unclear. Here, we performed whole-exome sequencing of DNA derived from 12 ACTH-secreting PAs and matched blood samples, which revealed three types of somatic mutations in a candidate gene, *USP8* (encoding ubiquitin-specific protease 8), exclusively in exon 14 in 8 of 12 ACTH-secreting PAs. We further evaluated somatic *USP8* mutations in additional 258 PAs by Sanger sequencing. Targeted sequencing further identified a total of 17 types of *USP8* variants in 67 of 108 ACTH-secreting PAs (62.04%). However, none of these mutations was detected in other types of PAs ($n = 150$). These mutations aggregate within the 14-3-3 binding motif of *USP8* and disrupt the interaction between *USP8* and 14-3-3 protein, resulting in an elevated capacity to protect EGFR from lysosomal degradation. Accordingly, PAs with mutated *USP8* display a higher incidence of EGFR expression, elevated EGFR protein abundance and mRNA expression levels of *POMC*, which encodes the precursor of ACTH. PAs with mutated *USP8* are significantly smaller in size and have higher ACTH production than wild-type PAs. In surgically resected primary *USP8*-mutated tumor cells, *USP8* knockdown or blocking EGFR effectively attenuates ACTH secretion. Taken together, somatic gain-of-function *USP8* mutations are common and contribute to ACTH overproduction in Cushing's disease. Inhibition of *USP8* or EGFR is promising for treating *USP8*-mutated corticotrophin adenoma. Our study highlights the potentially functional mutated gene in Cushing's disease and provides insights into the therapeutics of this disease.

Keywords: Cushing's disease; pituitary adenomas; *USP8*; mutation; whole-exome sequencing

Cell Research (2015) 25:306-317. doi:10.1038/cr.2015.20; published online 13 February 2015

Introduction

Adrenocorticotrophic hormone (ACTH)-secreting pituitary adenomas (PAs), referred to as Cushing's disease, arise from pituitary corticotroph cells and secrete large amounts of ACTH, promoting the adrenal glands to produce elevated levels of cortisol and then induce endogenous hypercortisolism [1, 2]. Cushing's disease accounts for up to 85% of corticotrophin-dependent Cushing's syndrome cases [3]. Cushing's disease is a severe and potentially fatal disease. Patients may have many clinical features such as central obesity, hypertension, cardiovascular disease and metabolic syndrome [2, 4], which are variably present in any given case. Both the diagnosis of hypercortisolism and the preoperative location of PAs in Cushing's disease are complicated and sometimes difficult [1, 4]. Currently, the first-line treatment of Cushing's disease is pituitary adenomectomy, generally performed via a transsphenoidal approach. However, only some patients achieve initial remission after surgery and PAs tend to recur after periods of remission [5], emphasizing the need to develop novel therapeutic approaches for Cushing's disease.

ACTH hypersecretion is a hallmark of Cushing's disease and reported to be caused by several molecular defects. For example, downregulation of Brg1 and histone deacetylase 2 (HDAC2) is found in Cushing's disease, which promotes proopiomelanocortin (*POMC*) transcription [6]. Reduced expression of the cell cycle inhibitor p27 (Kip1) is detected in human Cushing's adenoma [7], and mice with disrupted p27(Kip1) develop ACTH-secreting PAs [8]. High expression of EGFR is frequently observed in ACTH-secreting PAs and blocking EGFR signaling effectively inhibits ACTH secretion [9, 10]. However, the genetic basis for these molecular alterations remains elusive.

Several genetic alterations have been described in PAs. For example, somatic activating mutations of guanine nucleotide-binding protein α subunit (*GNAS*) are found in 30%-40% of sporadic somatotroph adenomas and account for McCune-Albright syndrome accompanied by PAs [11, 12]. Germline *AIP* mutations are found in sporadic PA patients without a family history of this disease [13, 14]. However, ACTH-secreting PAs are rarely reported to associate with adenoma-predisposing syndromes as well as mutations of *GNAS* or *AIP* [15]. Although case reports of mutations in *p53* [16], *DAX-1*

[17], *DICER1* [18] or the glucocorticoid receptor gene *NR3C1* [19] have been described in ACTH-secreting PAs or pituitary blastomas, the prevalent genetic alterations in these adenomas are still unknown.

In this study, we identified a total of 17 types of *USP8* (ubiquitin-specific protease 8) variants, which occurred in more than 60% of ACTH-secreting corticotrophin adenomas. These mutations could induce ACTH overproduction via deregulation of EGFR signaling and may lead to different clinical phenotypes. We further showed that *USP8* knockdown or gefitinib (a clinically available EGFR inhibitor) treatment significantly reduced ACTH secretion in primary *USP8*-mutated corticotrophin adenoma cells, but not in wild-type cells.

Results

Somatic USP8 mutations in Cushing's disease

To search for the genetic alterations in ACTH-secreting PAs, whole-exome sequencing was performed in DNA from 12 tumors and matched blood samples (Supplementary information, Table S1). Mean tumor purity was estimated as 90%. The average sequencing depth was 74 \times (42 \times to 162 \times) for the tumors and 113 \times (47 \times to 175 \times) for blood (Supplementary information, Figure S1A). Furthermore, 94% (91%-95%) of target regions were covered by at least 10 \times sequencing depth (Supplementary information, Figure S1B). This study revealed a low number of somatic mutations (median, 5; range, 1-9) per case and a total of 45 non-synonymous and 12 synonymous somatic mutations (Figure 1A and Supplementary information, Table S2), which were further validated by Sanger sequencing.

Except for nonsense mutation of *NR3C1* in one patient, no mutations were detected in any previously reported genes associated with adrenal Cushing's syndrome or PAs, including *GNAS* or *PRKACA* (Figure 1A). Strikingly, three recurrent somatic mutations (c.CTC2151-2153del/p.S718del; c.C2159G/p.P720R; c.T2152C/p.S718P), exclusively in exon 14 of the *USP8* gene, were found in 8 out of 12 tumors (Figure 1A). Sanger sequencing revealed that there was no allelic imbalances of *USP8* mutations in tumor tissues (Supplementary information, Figure S2), indicating a heterozygous status of these mutations, which is consistent with the observation by exome sequencing that their variant allele frequencies were comparable to those of other somatic mutations in

*These five authors contributed equally to this work.

Correspondence: Yong-Yong Shi^a, Yao Zhao^b, Chuan-Xin Huang^c

^aTel/Fax: +86-21-62932151; E-mail: shiyongyong@gmail.com

^bTel/Fax: +86-21-52888728; E-mail: zhaoyaohs@vip.sina.com

^cTel/Fax: +86-21-52888683; E-mail: huangcx@shsmu.edu.cn

Received 28 January 2015; revised 30 January 2015; accepted 2 February 2015; published online 13 February 2015

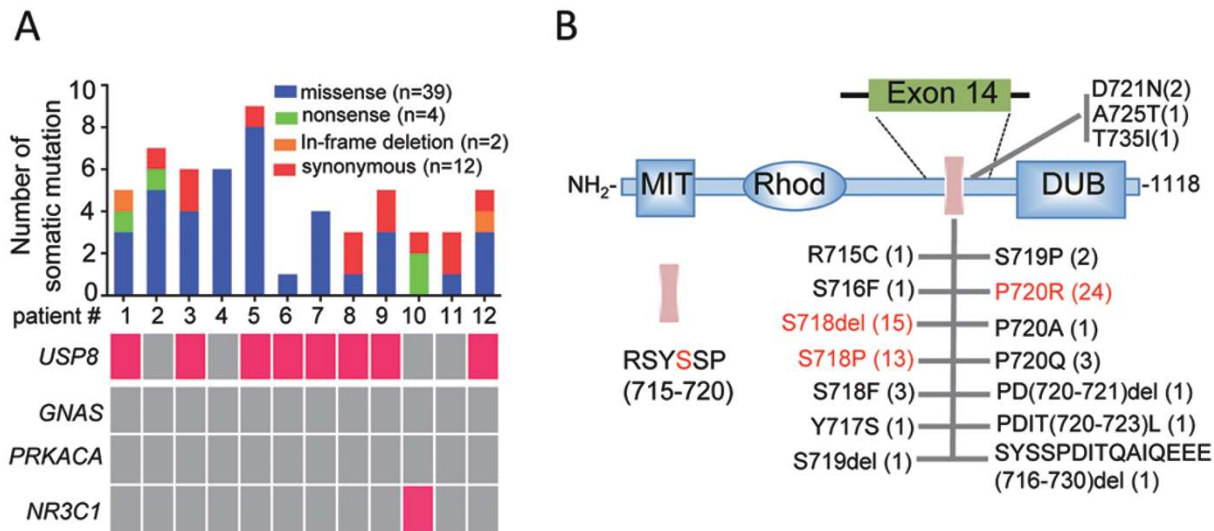


Figure 1 Recurrent *USP8* mutations in Cushing's disease. **(A)** The number of somatic mutations (top) and the mutational status of the indicated gene (bottom) in each patient, as revealed by whole-exome sequencing and Sanger sequencing. The total number of each type of somatic mutation in 12 cases is shown on the top right. Patients carrying the indicated mutated gene are marked in pink (bottom). **(B)** Schematic diagram of *USP8* domains and landscape of *USP8* alterations in the 14-3-3 binding motif and its nearby region. These alterations were identified in 108 patients with Cushing's disease by Sanger sequencing. The number of cases with the indicated *USP8* mutation among 108 patients is denoted in parentheses. The purple bar represents the 14-3-3 binding motif of *USP8*, and its amino acid sequence is shown on the bottom left. MIT, microtubule interaction and transport domain; Rhod, rhodanese-like domain; DUB, deubiquitinating domain.

tumor cells (Supplementary information, Figure S3). Except for *USP8* mutations, no other mutations occurred in more than one tumor tissue (Supplementary information, Table S2). Finally, no copy number variation (CNV) of the *USP8* gene was detected in 12 ACTH-secreting PAs based on whole-exome sequencing data.

To study the prevalence of *USP8* mutations in various PAs, we screened an additional 258 PAs including 108 ACTH-secreting, 50 growth hormone (GH)-secreting, 50 prolactin (PRL)-secreting and 50 non-functioning (NF) PAs (Supplementary information, Table S1). In addition to the three types of *USP8* mutations detected above, targeted sequencing identified other 14 types of somatic *USP8* mutations distributed in 67 out of 108 ACTH-secreting PAs (62.04%, Figure 1B and Supplementary information, Figure S4). Notably, the S718del, P720R and S718P mutations account for the vast majority of the *USP8*-mutated cases (77.61%; Figure 1B). All these mutations were not detected in matched blood samples. All the 17 types of detected *USP8* mutations were not found in dbSNP v138 and 1000 Genomes Project. Except for c.C2159G/p.P720R and C2159A/p.P720Q mutations, other mutations were not found in the COSMIC v68 database, indicating that these mutations are novel somatic mutations. Strikingly, none of the other types of PAs had similar genetic alterations in exon 14 of *USP8*

(Supplementary information, Table S1). Taken together, these data indicate that *USP8* mutations are common and unique genetic alterations in ACTH-secreting PAs.

Functional characterization of *USP8* mutants

USP8 is a deubiquitinating enzyme that protects growth factor receptors including epidermal growth factor receptor (EGFR) from degradation [20, 21]. EGFR activation promotes *POMC* transcription in primarily cultured human ACTH-secreting tumor cells [10]. *USP8* contains a putative 14-3-3 binding motif RSYSSP that is encoded by part of exon 14 of *USP8* in humans (Figure 1B) and is identically conserved in various species (Supplementary information, Figure S5). The phosphorylation of *USP8* on the fourth serine (S718) of its 14-3-3 binding motif results in its binding with 14-3-3 proteins and catalytic inactivation [22, 23]. A structural study demonstrated that within the 14-3-3 binding motif, the amino acid preferences in each position are very similar, and the phosphorylation of serine at the fourth position is essential for its binding ability [24]. Furthermore, this serine (S718) was most frequently disrupted via deletion or missense mutation in all *USP8*-mutated cases (37/75). Other affected amino acids were either in the 14-3-3 binding motif or its adjacent regions (Figure 1B). Thus, we examined whether three prevalent tumor-derived

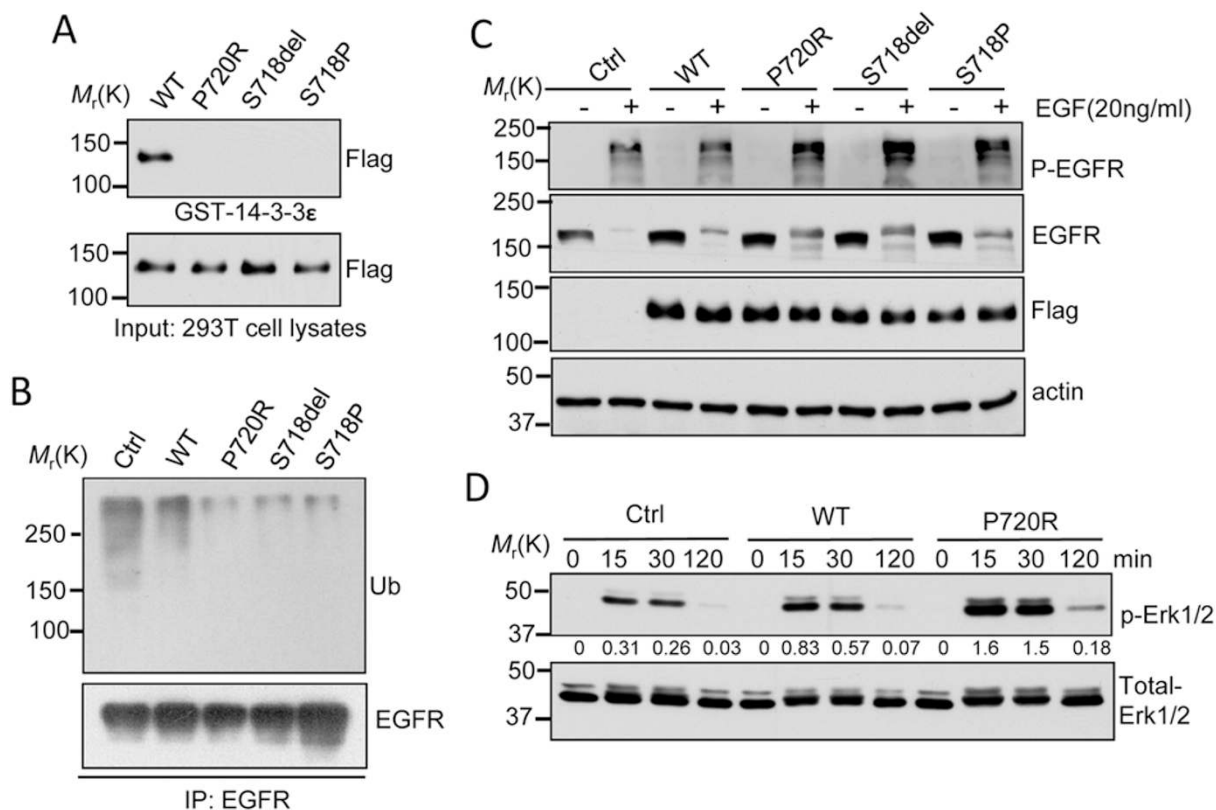


Figure 2 Molecular characterization of *USP8* mutants. **(A)** *USP8* mutants fail to bind 14-3-3 protein. Cell lysates from 293T cells expressing Flag-tagged WT-*USP8* or the indicated *USP8* mutants were incubated with GST-14-3-3 ϵ immobilized on Glutathione-Sepharose beads. GST pull-down or input samples were immunoblotted with anti-Flag antibody. **(B)** Reduced EGFR ubiquitination in *USP8* mutants. Cell lysates from HeLa cells stably expressing Flag-tagged WT-*USP8*, the indicated mutant or the vector only (Ctrl) were immunoprecipitated (IP) using anti-EGFR antibody, and the immunoprecipitation products were analyzed by immunoblotting with anti-EGFR and ubiquitin (Ub) antibodies. **(C)** Slower EGFR degradation in HeLa cells expressing *USP8* mutant relative to WT. Serum-starved HeLa cells stably expressing Flag-tagged *USP8* protein were treated with EGF (20 ng/ml) in the presence of cycloheximide (25 μ g/ml) for 3 h. Immunoblot analysis was performed to determine p-EGFR, EGFR and Flag-*USP8* protein levels. **(D)** Enhanced EGF-induced Erk phosphorylation in *USP8* P720R mutant. HeLa cells stably expressing WT, *USP8* P720R mutants or the control were treated with EGF (20 ng/ml) for the indicated times. Cell lysates were subjected to immunoblot analysis for total Erk and phospho-Erk (p-Erk). The densitometric ratio of p-Erk1/2 to total-Erk1/2 is shown between panels. Three independent experiments were repeated with similar results.

USP8 mutations abolish or reduce *USP8* binding ability with 14-3-3 ϵ and increase the capability of blocking EGFR degradation.

As expected, WT *USP8* was shown to bind 14-3-3 ϵ in a GST pull-down assay. Interestingly, the three tested *USP8* mutants were not detected in the 14-3-3 ϵ bound complexes, although they were expressed at levels similar to WT (Figure 2A). Moreover, EGFR ubiquitination was obviously reduced in cells transduced with mutant *USP8* (Figure 2B). EGF treatment induced a faster degradation of EGFR protein in HeLa cells expressing WT *USP8* compared to mutants, although EGFR protein levels were comparable in these cells under serum-starved conditions (Figure 2C). Finally, EGF treatment induced

a stronger phosphorylation of Erk1/2 in HeLa cells expressing mutant *USP8* (Figure 2D).

We next assessed the consequences of *USP8* mutation in tumor tissue. Immunochemical analysis demonstrated that the *USP8* protein was ubiquitously expressed in normal pituitary tissue and in *USP8* WT or mutated ACTH-secreting PAs at comparable levels (Figure 3A). However, only part of PAs were positive for EGFR staining, and EGFR-positive cases were more frequently detected in *USP8*-mutated PAs ($P = 0.01$, Pearson's χ^2 test), where they account for ~80% of the cases (28/35), compared to 50% in WT cases (15/30). Notably, EGFR staining intensity in EGFR-positive tumors with WT *USP8* was generally lower (Figure 3A). Furthermore,

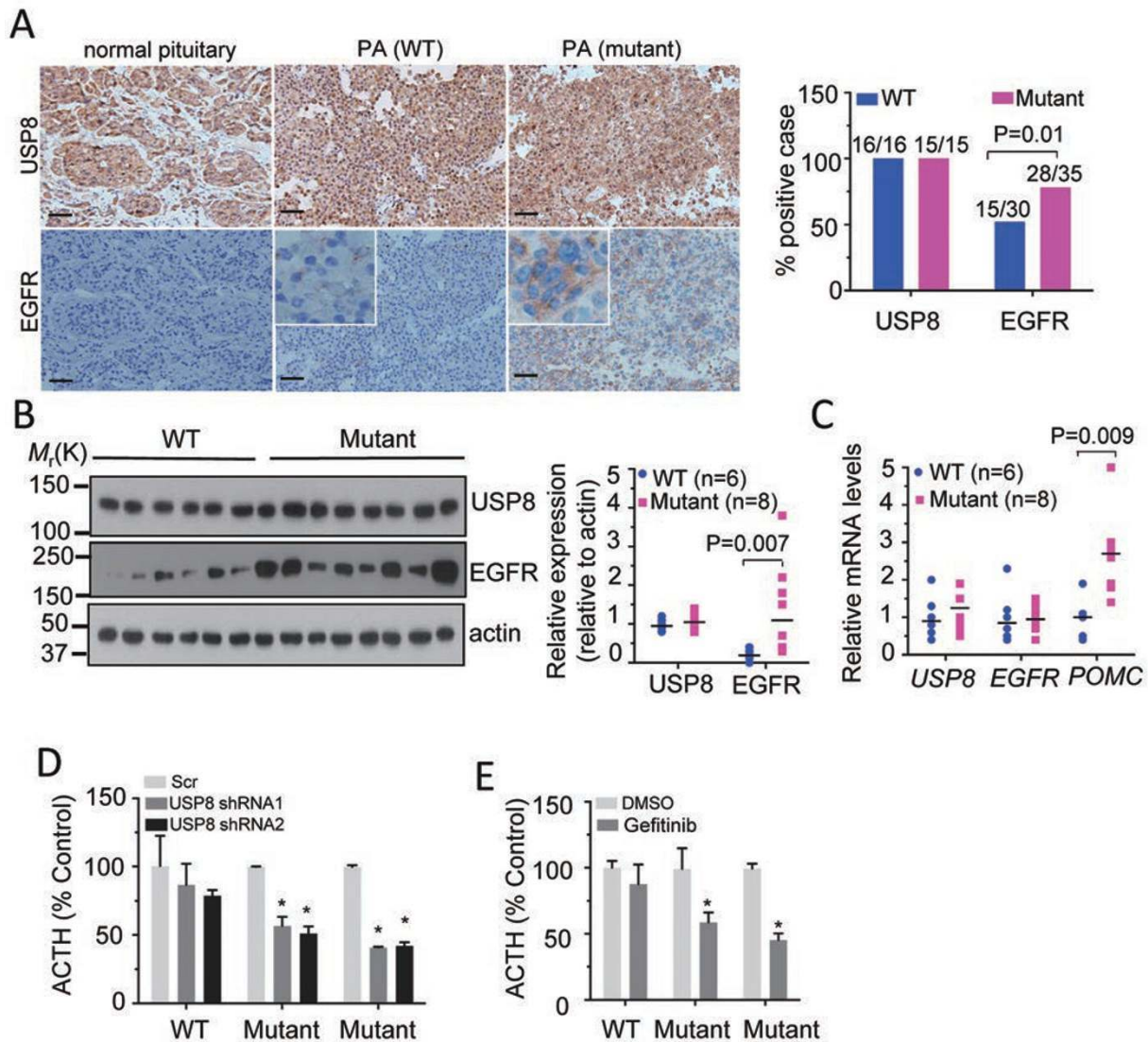


Figure 3 *USP8* mutation enhances EGFR protein expression and *POMC* mRNA abundance in ACTH-secreting PAs. **(A)** Immunohistochemical staining for USP8 and EGFR in a representative normal pituitary, *USP8* WT and mutated PAs. Scale bar, 50 μ m. Inset, high magnification. In both WT and mutated groups, the percentage of USP8- and EGFR-positive cases was calculated (right). On top of the column, actual number of mutated samples over total analyzed. *P* values were calculated by Pearson's χ^2 test. **(B)** Immunoblot analysis of USP8, EGFR and actin levels in *USP8* WT and mutated PAs (left). Each lane represents one case. The relative protein levels of USP8 and EGFR are normalized to actin and shown on the right. **(C)** Relative mRNA levels of *USP8*, *EGFR* and *POMC* in *USP8* WT and mutated PAs, assessed by RT-qPCR analysis and normalized to the housekeeper gene *HPRT*. In **B** and **C**, a total of 6 WT and 8 *USP8*-mutated cases are analyzed and the number is indicated by n. Each symbol represents an individual case and lines indicate the median. *P* values were calculated by the Mann-Whitney *U*-test. **(D)** Suppression of ACTH secretion in primary human ACTH-secreting tumor cells after *USP8* knockdown using lentivirus-mediated shRNA. **(E)** Decreased ACTH secretion in primary tumor cells treated with Gefitinib (1 μ M) for 48 h. In **D** and **E**, ACTH levels in culture media were measured with radioimmunoassay (RIA) and presented as % of control media. Error bar indicates SEM of 3 replicates. **P* < 0.05 compared to control (Mann-Whitney *U*-test). One WT and two *USP8*-mutated PAs are shown.

immunoblot analysis demonstrated notably increased EGFR protein levels in half *USP8*-mutated PAs and Erk1/2 phosphorylation in most *USP8*-mutated PAs examined (Figure 3B and Supplementary information,

Figure S6). RT-qPCR analysis revealed a higher mRNA abundance of *POMC* (*P* = 0.009, Mann-Whitney *U*-test), but not *USP8* and *EGFR*, in ACTH-secreting PAs with *USP8* mutations (Figure 3C). To assess the important

role of *USP8* mutation in ACTH production, we established surgically resected primary human ACTH-secreting tumor cells. *USP8* knockdown resulted in a significant reduction of ACTH secretion in culture media from *USP8*-mutated tumor cells ($P < 0.05$, Mann-Whitney *U*-test), but not WT tumor cells (Figure 3D). Treatment of gefitinib, a clinically available EGFR inhibitor, also effectively attenuated ACTH secretion in *USP8*-mutated tumor cells (Figure 3E). Moreover, *USP8* knockdown reduced EGFR protein level in *USP8*-mutated tumor cells (Supplementary information, Figure S7). Taken together, these results indicate that *USP8* mutations contribute to the pathogenesis of ACTH-secreting PAs.

Clinical phenotypes and *USP8* mutational status

Few genetic alterations have been linked to the clinical phenotype of Cushing's disease. We explored whether

patients with Cushing's disease carrying *USP8* mutations display distinct clinical features. *USP8* mutations were identified in both female and male patients, but their frequency was significantly higher in female patients (67.7%) compared to male patients (38.1%) ($P = 0.01$, Pearson's χ^2 test; Figure 4A). Contrast-enhanced T1-weighted magnetic resonance imaging (MRI) demonstrated that 16 of 39 *USP8*-WT PAs (41.0%) were very large and extended into the parasellar space, including the cavernous sinus and the sphenoidal sinus. In contrast, the vast majority of *USP8*-mutated PAs was small in size (maximal diameter) and diffusely distributed within the sella, and only 8 of 63 cases (12.7%) displayed parasellar invasion ($P = 0.001$, Pearson's χ^2 test; Figure 4B and 4C) [25, 26]. This morphological difference is further supported by the fact that *USP8*-mutated PAs were generally smaller in size compared to *USP8*-WT PAs ($P < 0.001$,

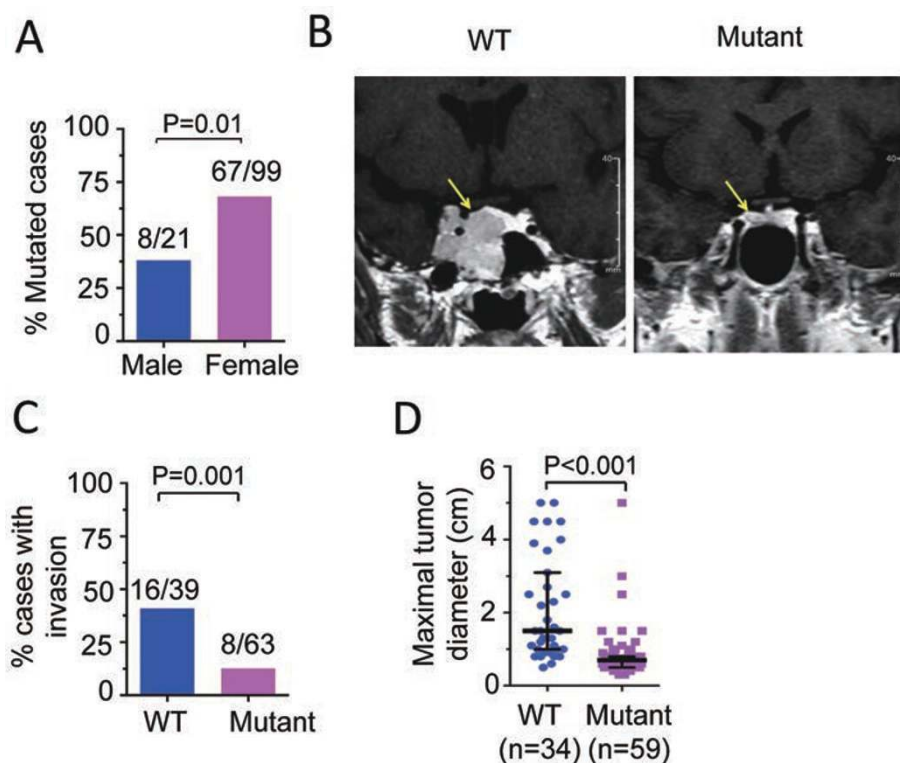


Figure 4 Clinical characteristics of patients with Cushing's disease in relation to *USP8* mutational status. **(A)** Frequency of *USP8* mutations in male and female patients with Cushing's disease. **(B)** Representative contrast-enhanced T1 weighted MRI of PAs with or without *USP8* mutations. Tumor bulk is indicated by arrows. The WT tumor is very large and invasively extends into the sphenoidal sinus and the cavernous sinus, whereas the mutant tumor is markedly smaller in size and diffusely distributed within the sella. **(C)** Percentage of cases with invasion in both *USP8* WT and mutated groups. Invasive adenomas were defined as fulfilling 1 of 2 conditions: (1) Hardy's modified classification grade III, IV and/or stage C, D and E; (2) Knosp classification grade III and IV. In **A** and **C**, the actual number of mutated cases over the total cases analyzed is shown on top of each column. *P* values were calculated by Pearson's χ^2 test. **(D)** Different maximal diameter between *USP8* WT and mutated groups. Each symbol (dot) represents an individual case. Lines indicate the median with interquartile range (25% and 75%). The number of patients with each genotype is indicated by n. *P* values were calculated by the Mann-Whitney *U*-test.

Table 1 A comparison of clinical characteristics of patients with ACTH-secreting PAs with or without *USP8* mutations

Characteristic	WT (<i>n</i> = 45)	Mutant (<i>n</i> = 75)	<i>P</i> value
Age at diagnosis (Year)			
Median	40	36	0.08†
Interquartile range	29.5-46.0	26.0-42.0	
Body Mass Index (BMI)			
Median	25.4	24.2	0.36†
Interquartile range	21.6-27.8	22.4-26.7	
Plasma corticotropin (ACTH) (pg/ml)			
Median	94.0	68.8	0.054†
Interquartile range	60.6-163.0	51.4-105.5	
ACTH (pg/ml)/Size (cm)			
Median	51.0	103.0	< 0.001†
Interquartile range	31.5-104.6	76.3-201.7	
Midnight serum cortisol (µg/dl)			
Median	21.82	22.86	0.79†
Interquartile range	16.18-31.20	18.35-29.41	
Urinary free cortisol (µg/24 h)			
Median	650.24	552.64	0.39†
Interquartile range	412.13-1168.25	262.75-977.47	
Immediate postoperative biochemical remission (%)Φ			
Yes	33(73.3)	63(84.0)	0.16‡
No	12(26.7)	12(16.0)	
Postoperative recurrence (%)Я			
Yes	8(25.8)	12(20.7)	0.58‡
No	23(74.2)	46(79.3)	
Average recurrence period (month)			
Median	48	29	0.28†
Interquartile range	15.0-48.0	16.3-38.3	

†Values were compared by Mann-Whitney *U*-test.

‡Values were compared by Pearson's χ^2 test.

ΦImmediate postoperative biochemical remission was defined on the basis of the biochemical evidence of adrenal cortical insufficiency as witnessed by the drop in the immediate postoperative serum cortisol (range, < 3 µg/dL).

ЯPostoperative recurrence was defined when a patient with initial biochemical and clinical evidence for remission after operation developed symptomatic recurrence of Cushing disease with biochemical reconfirmation of pituitary-dependent endogenous hypercortisolism.

Summary of patient number for each parameter:

Age: Data were available for 45 patients with no mutation and 75 patients with mutation.

BMI: Data were available for 45 patients with no mutation and 75 patients with mutation.

ACTH: Data were available for 43 patients with no mutation and 65 patients with mutation.

ACTH/Size: Data were available for 32 patients with no mutation and 51 patients with mutation.

Midnight serum cortisol: Data were available for 29 patients with no mutation and 45 patients with mutation.

Urinary free cortisol: Data were available for 28 patients with no mutation and 41 patients with mutation.

Immediate postoperative biochemical remission: Data were available for 45 patients with no mutation and 75 patients with mutation.

Postoperative recurrence: Among patients who reached immediate postoperative biochemical remission, long-term follow-up was performed in 33 cases with no mutation (2 were lost) and 63 cases with mutation (5 were lost).

Average recurrence period: In no mutation group, data were available for 8 recurrent patients, while in mutation group, data were available for 12 recurrent patients.

Mann-Whitney *U*-test; Figure 4D). However, patients with mutated *USP8* showed comparable levels of plasma ACTH, midnight serum cortisol and 24-h urinary free cortisol (UFC; Table 1), indicating that *USP8*-mutated PAs have higher ACTH production.

The rate of immediate biochemical remission after initial transsphenoidal surgery was indistinguishable between *USP8* WT and mutated patients. One month to nine years follow-up of patients receiving initial remission further demonstrated that the recurrence rate and the average recurrence period were unrelated to the *USP8* mutational status (Table 1).

Discussion

ACTH-secreting adenomas are monoclonal in nature, although sporadic in origin, and genetic alterations have been implicated in their tumorigenesis [27, 28]. However, genetic lesions have seldom been reported in these tumors. Our current study revealed that 62.04% of ACTH-secreting PAs harbor somatic mutations in exon 14 of the *USP8* gene. The number of somatic mutations per case was low, and except *USP8* mutations, no other recurrent mutations were found in 12 ACTH-secreting PAs examined. Moreover, the CNV of the *USP8* gene was not detected based on exome sequencing data from 12 ACTH-secreting PAs. Collectively, our study identified somatic *USP8* mutations as the dominant genetic alterations in ACTH-secreting PAs, suggesting that Cushing's disease may result from genetic alterations. It is expected that other rare recurrent gene mutations may be found in Cushing's disease if we increase sample size for exome sequencing and/or examine mutational status of each of other 56 mutated genes (listed in Supplementary information, Table S2) in 108 PAs using Sanger sequencing. Importantly, none of other types of PAs harbor mutations in exon 14 of *USP8*. Previous studies reported that *GNAS* or *AIP* mutation-associated PAs usually secrete GH or PRL [15]. Genetic alteration of either the *GNAS* or *AIP* genes was rarely detected in ACTH-secreting PAs. Thus, our finding provides evidence that the genetic origin of PAs is heterogeneous and that ACTH-secreting PAs are pathogenically distinct. Of note, a nonsense mutation of *NR3C1*, resulting in a truncated glucocorticoid receptor, was detected in one WT-*USP8* patient. Inactivation of the glucocorticoid receptor signal is involved in the pathogenesis of ACTH-secreting PAs, especially for ACTH overproduction [29, 30]. Therefore, the *NR3C1* mutation could be an important genetic lesion in some PAs, especially for WT-*USP8* cases.

Strikingly, all three prevalent tumor-derived *USP8* mutants fail to bind 14-3-3 proteins and display an ele-

vated deubiquitinating activity toward EGFR, indicating that these represent gain-of-function mutations. Several lines of evidence support that *USP8* mutation contributes to ACTH hyperproduction: (1) *USP8*-mutated PAs expressed higher level of *POMC* mRNA, (2) patients with *USP8*-mutated PAs had similar levels of plasma ACTH, although PAs were markedly smaller in size, and (3) *USP8* knockdown attenuated ACTH secretion in primary *USP8*-mutated tumor cells. Therefore, we conclude that gain-of-function *USP8* mutation plays an important role in ACTH overproduction.

USP8 deubiquitinates numerous proteins, and some of them are implicated in ACTH production. As a well-studied *USP8* target, EGFR appears to play a central role in ACTH hyperproduction in Cushing's disease carrying *USP8* mutation. We found that *USP8*-mutated PAs have a higher incidence of EGFR expression, increased EGFR protein abundance and activation of downstream Erk1/2, indicating that *USP8* mutations enhance EGFR signaling in tumors. Importantly, *USP8* inactivation attenuated ACTH secretion and EGFR expression in primary tumor cells. Activation of EGFR promotes *POMC* transcription via MAPK signaling in Cushing's disease [10]. Taken together, we conclude that *USP8* mutation sustains EGFR-MAPK signaling to promote ACTH production in Cushing's disease (Figure 5). Interestingly, low p27(Kip1) expression is more frequently observed in corticotropinoma expressing high level of EGFR [9]. Considering that activation of EGFR-MAPK signaling induces p27(Kip1) degradation, and p27(Kip1)-deficient mice develop corticotropinoma [7, 31], we speculate that through activating EGFR signaling *USP8* mutation accelerates p27(Kip1) degradation, representing an important molecular mechanism underlying ACTH hyperproduction (Figure 5). In addition, *USP8* regulates the expression of other receptor tyrosine kinases (RTKs) such as ErbB3 and C-Met [32, 33], which share very similar signaling cascades with EGFR. Indeed, we observed the high expression level of ErbB3 and C-Met in a substantial number of *USP8*-mutated PAs via immunohistochemistry (Supplementary information, Figure S8). Smoothed, a key component of Hedgehog pathway, is deubiquitinated by *USP8* [34] and activation of Hedgehog pathway induces ACTH secretion [35]. It is expected that *USP8* mutations deregulate these molecules to drive ACTH production and secretion. Further studies are required to fully understand the role of *USP8* mutations in the pathogenesis of ACTH-secreting PAs and the underlying molecular mechanisms.

Our findings have important clinical implications. Most *USP8*-mutated PAs are small in size (< 0.5 cm) and diffusely distributed within the sella, making them

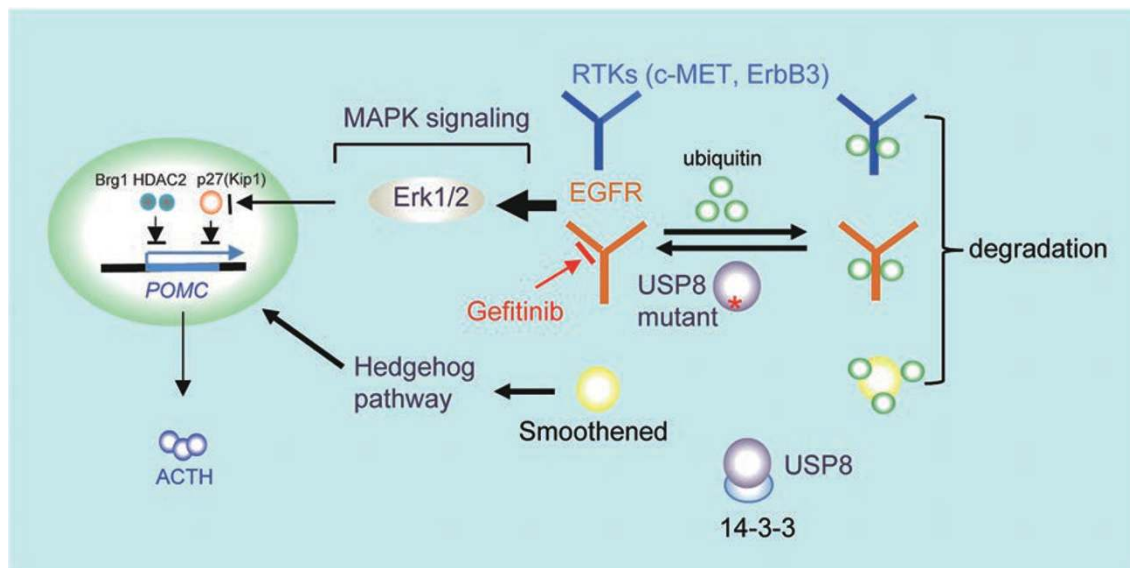


Figure 5 Mechanisms of *USP8* mutation-mediated ACTH hyperproduction. The deubiquitinating enzyme *USP8* can be phosphorylated allowing for association with 14-3-3 protein, which subsequently inhibits its activity. *USP8* mutant fails to bind 14-3-3 protein, leading to an elevated *USP8* activity. *USP8* deubiquitinates numerous targets and protect them from degradation. EGFR is a crucial *USP8* target, and deregulation of EGFR leads to increased MAPK signaling and subsequently promotes *POMC* transcription partially through inducing the degradation of p27(Kip1), perhaps other regulators such as Brg1 and HDAC2. *USP8* also regulates other RTKs such as c-MET and ErbB3, both of which potentially play a role in ACTH production. Finally, through regulating Smoothed expression and cellular location, *USP8* mutation activates Hedgehog signaling, resulting in ACTH secretion. Therefore, inhibiting *USP8* and/or EGFR activity represents a potential therapeutic approach for Cushing's disease.

difficult to be detected by MRI scanning and even by those experienced neurosurgeons using intraoperative neuronavigation. In contrast, almost half of the *USP8*-WT PAs were very large and featured by parasellar invasion, increasing the difficulty and risk of surgery. In each situation, it is almost impossible to completely remove the entire tumor, which could explain the similarly low remission and high recurrence rate after initial surgery in both *USP8* WT and mutated ACTH-secreting PAs. In addition, considering that *USP8*-mutated PAs usually display much smaller size, we speculate that patients with small tumor even difficultly detected by MRI scanning, most likely carry *USP8* mutations. Therefore, inhibiting *USP8* activity might be the first-line treatment of choice for patients with such PAs. As surgery alone seems to be unlikely to cure most cases of Cushing's disease, new therapeutic approaches are needed to specifically target tumor and suppress ACTH production [1, 5]. Our findings strongly indicate that inhibiting *USP8* catalytic activity might be a promising therapeutic strategy for Cushing's disease cases with *USP8* mutations, especially for patients with either residual or recurrent adenomas. Moreover, anti-EGFR therapy, a potential therapeutic strategy for treatment of Cushing's disease [10], seems to

be more effective for patients carrying *USP8* mutation, given that these patients more likely harbor activated EGFR-MAPK signaling.

While this manuscript was in preparation, Reincke *et al.* [36] reported similar findings that dominant mutations in *USP8* lead to Cushing's disease through activation of EGFR signaling. Of note, there are some significant differences between our study and study by Reincke *et al.* To our knowledge, our study which includes 120 corticotrophin adenomas is the largest genetic investigation for Cushing's disease so far. The study by Reincke *et al.* [36] only reported 5 types of *USP8* mutations in 6 of 17 Cushing's disease cases. We reported a total of 17 types of *USP8* mutations in 75 of 120 Cushing's disease cases. We further identified three highly prevalent *USP8* mutations, which account for the vast majority of mutated cases (77.61%). These data clearly define the spectrum of *USP8* mutations. Furthermore, our study added valuable information which may provide guidance for the clinical practice in future: (1) Attributing to the larger sample size of the cohort, our study presents more clinical data to imply the clinical relevance of *USP8* mutation. The major novel clinical finding is that *USP8*-mutated corticotrophin adenomas are significantly smaller in size but

possess higher capacity to produce ACTH ($P < 0.001$), which clearly describes the clinical characteristics of the potential subjects who may benefit from targeted therapy developed from *USP8* mutations. (2) We performed inhibitory functional experiments in primary human ACTH-secreting corticotrophin adenoma cells, which was a more genetically and clinically faithful cell model. For the first time, we showed that *USP8* knockdown or gefitinib treatment significantly reduced ACTH secretion in primary *USP8*-mutated corticotrophin adenoma cells, but not in wild-type cells. These novel findings provide direct evidence that inhibition of *USP8* and EGFR is promising for treating *USP8*-mutated corticotrophin adenoma. Taken together, the findings from our study and study by Reincke *et al.* will contribute to the development of novel therapies for Cushing's disease. New therapy targeting *USP8* and/or EGFR might become the first-line treatment for *USP8*-mutated corticotrophin adenomas, especially for those surgically uncured and relapsed cases.

Materials and Methods

Study patients

Patients were recruited at the department of neurosurgery at Huashan Hospital affiliated to Shanghai Medical College, Fudan University from 2003 to 2014 for this study. A total of 120 patients (99 women and 21 men; age range from 14 to 60) with Cushing's disease were included in this study. 12 randomly selected cases were used for initial exome sequencing, and the remaining 108 cases were used to study the prevalence of *USP8* mutation (Supplementary information, Table S1). In addition, we analyzed 50 NF PAs, 50 GH-secreting PAs and 50 PRL-secreting PAs (Supplementary information, Table S1). Two normal pituitary tissues were obtained from cadaveric organ donations and tested to be suitable for immunohistochemical studies. All patients gave written informed consent, and the ethics committee at Huashan Hospital approved the study.

Cushing's disease was diagnosed using previously described and currently accepted criteria [4]. Briefly, the diagnosis of hypercortisolism was based on typical catabolic features (ie, facial plethora, purple striae, muscle atrophy of the limbs) and a combination of biochemical test results are as follows: increased awake midnight serum cortisol levels ($> 7.5 \mu\text{g/dl}$ ($> 207.3 \text{ nmol per liter}$)), elevated 24-h UFC ($> 129.13 \mu\text{g}$ ($> 356.9 \text{ nmol}$)) and nonsuppressible serum cortisol levels ($> 5 \mu\text{g/dl}$ ($> 138.2 \text{ nmol per liter}$)) after the administration of 1 mg of dexamethasone. The pituitary source of hypercortisolism was defined by increased morning plasma ACTH levels ($> 20 \text{ pg/ml}$ ($> 4.4 \text{ pmol per liter}$)) and $> 50\%$ suppression of 24-h UFC in the classic high-dose dexamethasone-suppression test (HDST). Finally, contrast-enhanced T1-weighted MRI scanning was used to visualize adenomas. The presence of microadenomas (usually maximal diameter $< 6 \text{ mm}$), which were undetected by MRI, was inferred by bilateral inferior petrosal sinus sampling (BIPSS). The final diagnosis of all Cushing's disease cases was histologically confirmed by two senior pa-

thologists in blinded fashion. Of note, all surgically resected PAs from these patients are positive for ACTH staining, and ACTH immunostaining for 12 PAs used for whole-exome sequencing is shown in Supplementary information, Figure S9. The clinical details of 120 patients with Cushing's disease are provided in Supplementary information, Table S3. All reference ranges over the endocrine parameters in this study are provided in Supplementary information, Data S1.

Whole-exome sequencing and candidate gene validation

We performed exome sequencing of DNA from fresh tumor tissues of 12 ACTH-secreting PAs and matched blood samples on the HiSeq 2500 platform (Illumina). Exome sequencing libraries were enriched using the TruSeq™ Exome Enrichment 62 Mb Kit (Illumina). Sanger sequencing was performed to validate the candidate gene in 108 ACTH-secreting PAs and 150 other PA types. Detailed methods of DNA extraction, library preparation and variant detection are described in Supplementary information, Data S1.

DNA constructs and site-directed mutagenesis

Full-length wild-type human *USP8* and 14-3-3 ϵ expression plasmids were purchased from GE Dharmacon. cDNA encoding 14-3-3 ϵ was cloned into pGEM2 (Promega) expression vectors. The *USP8* encoding sequence was amplified and cloned into the T-easy vector (Promega), which was used for site-directed mutagenesis. The desired mutations in *USP8* cDNA were introduced with the QuikChange II Site-Directed Mutagenesis Kit (Agilent Technologies). cDNA fragments encoding wild-type and mutant *USP8* were subcloned into the Flag-tagged pcDH-EF-T2A-puromycin lentivirus expression vector (System Biosciences). The primers used in the mutagenesis are listed in Supplementary information, Table S4.

Statistical analysis

The statistical analysis was performed using SPSS version 16.0 (SPSS Inc.), and graphs were prepared with Prism 6.0 (GraphPad) software. Pearson's χ^2 test and the Mann-Whitney *U*-test were used for the categorical variables and the continuous variables, respectively. $P < 0.05$ was considered to be statistically significant.

Additional methods are provided in Supplementary information, Data S1.

Acknowledgments

We specially thank Genetron Health (Beijing) Co., Ltd for assistance with genomic data analysis. We gratefully acknowledge Professor Zhengping Zhuang, Dr Lei Xiong, Professor Lu Xie, Dr Baofeng Lian, Professor Xingdang Liu and Professor Zhebao Wu for helpful discussions. We thank Professor Yuqing Wang, Mrs Qiuwei Song, Ms Yun Zhang, Mrs Yun Lu and Mr Qiongji Zhu for sample collection. We also thank Jingjing Zhu and Chao Li for their technical assistance with immunohistochemical staining. This study was supported by China Pituitary Adenoma Specialist Council (CPASC), the National High Technology Research and Development Program of China (863 program; 2014AA020611), the National Program for Support of Top-Notch Young Professionals, the National Natural Science Foundation of China (81172391), Program for New Century Excellent Talents in University (NCET-10-

0356), Shanghai Rising-Star Tracking Program (12QH1400400) to YZ; the National Basic Research program of China (973 Program; 2015CB559100), the National High Technology Research and Development Program of China (863 program; 2012AA02A515), the National Natural Science Foundation of China (31325014, 81130022 and 81272302), Shanghai Jiao Tong University Liberal Arts and Sciences Cross-Disciplinary Project (13JCRZ02), Shanghai Key Laboratory of Psychotic Disorders (13dz2260500), "Shu Guang" project supported by Shanghai Municipal Education Commission and Shanghai Education Development Foundation (12SG17) to Y-Y S.

References

- Colao A, Boscaro M, Ferone D, Casanueva FF. Managing Cushing's disease: the state of the art. *Endocrine* 2014; **47**:9-20.
- Newell-Price J, Bertagna X, Grossman AB, Nieman LK. Cushing's syndrome. *Lancet* 2006; **367**:1605-1617.
- Melmed S. The Pituitary. 3rd ed. *Amsterdam: Elsevier* 2011:712-713.
- Nieman LK, Biller BM, Findling JW, *et al.* The diagnosis of Cushing's syndrome: an Endocrine Society Clinical Practice Guideline. *J Clin Endocrinol Metab* 2008; **93**:1526-1540.
- Biller BM, Grossman AB, Stewart PM, *et al.* Treatment of adrenocorticotropin-dependent Cushing's syndrome: a consensus statement. *J Clin Endocrinol Metab* 2008; **93**:2454-2462.
- Bilodeau S, Vallette-Kasic S, Gauthier Y, *et al.* Role of Brg1 and HDAC2 in GR *trans*-repression of the pituitary *POMC* gene and misexpression in Cushing disease. *Genes Dev* 2006; **20**:2871-2886.
- Lidhar K, Korbonits M, Jordan S, *et al.* Low expression of the cell cycle inhibitor p27Kip1 in normal corticotroph cells, corticotroph tumors, and malignant pituitary tumors. *J Clin Endocrinol Metab* 1999; **84**:3823-3830.
- Kiyokawa H, Kineman RD, Manova-Todorova KO, *et al.* Enhanced growth of mice lacking the cyclin-dependent kinase inhibitor function of p27(Kip1). *Cell* 1996; **85**:721-732.
- Theodoropoulou M, Arzberger T, Gruebler Y, *et al.* Expression of epidermal growth factor receptor in neoplastic pituitary cells: evidence for a role in corticotropinoma cells. *J Endocrinol* 2004; **183**:385-394.
- Fukuoka H, Cooper O, Ben-Shlomo A, *et al.* EGFR as a therapeutic target for human, canine, and mouse ACTH-secreting pituitary adenomas. *J Clin Invest* 2011; **121**:4712-4721.
- Vallar L, Spada A, Giannattasio G. Altered Gs and adenylate cyclase activity in human GH-secreting pituitary adenomas. *Nature* 1987; **330**:566-568.
- Weinstein LS, Shenker A, Gejman PV, Merino MJ, Friedman E, Spiegel AM. Activating mutations of the stimulatory G protein in the McCune-Albright syndrome. *N Engl J Med* 1991; **325**:1688-1695.
- Chahal HS, Stals K, Unterlander M, *et al.* AIP mutation in pituitary adenomas in the 18th century and today. *N Engl J Med* 2011; **364**:43-50.
- Cazabat L, Bouligand J, Salenave S, *et al.* Germline AIP mutations in apparently sporadic pituitary adenomas: prevalence in a prospective single-center cohort of 443 patients. *J Clin Endocrinol Metab* 2012; **97**:E663-E670.
- Stratakis CA, Tichomirowa MA, Boikos S, *et al.* The role of germline AIP, MEN1, PRKAR1A, CDKN1B and CDKN2C mutations in causing pituitary adenomas in a large cohort of children, adolescents, and patients with genetic syndromes. *Clin Genet* 2010; **78**:457-463.
- Kawashima ST, Usui T, Sano T, *et al.* P53 gene mutation in an atypical corticotroph adenoma with Cushing's disease. *Clin Endocrinol (Oxf)* 2009; **70**:656-657.
- De Menis E, Roncaroli F, Calvari V, *et al.* Corticotroph adenoma of the pituitary in a patient with X-linked adrenal hypoplasia congenita due to a novel mutation of the *DAX-1* gene. *Eur J Endocrinol* 2005; **153**:211-215.
- Sahakitrungruang T, Srichomthong C, Pornkunwilai S, *et al.* Germline and somatic *DICER1* mutations in a pituitary blastoma causing infantile-onset Cushing's disease. *J Clin Endocrinol Metab* 2014; **99**:E1487-1492.
- Karl M, Lamberts SW, Koper JW, *et al.* Cushing's disease preceded by generalized glucocorticoid resistance: clinical consequences of a novel, dominant-negative glucocorticoid receptor mutation. *Proc Assoc Am Physicians* 1996; **108**:296-307.
- Naviglio S, Mattecucci C, Matoskova B, *et al.* UBPY: a growth-regulated human ubiquitin isopeptidase. *EMBO J* 1998; **17**:3241-3250.
- Mizuno E, Iura T, Mukai A, Yoshimori T, Kitamura N, Komada M. Regulation of epidermal growth factor receptor down-regulation by UBPY-mediated deubiquitination at endosomes. *Mol Biol Cell* 2005; **16**:5163-5174.
- Mizuno E, Kitamura N, Komada M. 14-3-3-dependent inhibition of the deubiquitinating activity of UBPY and its cancellation in the M phase. *Exp Cell Res* 2007; **313**:3624-3634.
- Berlin I, Schwartz H, Nash PD. Regulation of epidermal growth factor receptor ubiquitination and trafficking by the USP8.STAM complex. *J Biol Chem* 2010; **285**:34909-34921.
- Yaffe MB, Rittinger K, Volinia S, *et al.* The structural basis for 14-3-3:phosphopeptide binding specificity. *Cell* 1997; **91**:961-971.
- Wilson CB. A decade of pituitary microsurgery. The Herbert Olivecrona lecture. *J Neurosurg* 1984; **61**:814-833.
- Knosp E, Steiner E, Kitz K, Matula C. Pituitary adenomas with invasion of the cavernous sinus space: a magnetic resonance imaging classification compared with surgical findings. *Neurosurgery* 1993; **33**:610-617; discussion 617-618.
- Herman V, Fagin J, Gonsky R, Kovacs K, Melmed S. Clonal origin of pituitary adenomas. *J Clin Endocrinol Metab* 1990; **71**:1427-1433.
- Biller BM, Alexander JM, Zervas NT, Hedley-Whyte ET, Arnold A, Klibanski A. Clonal origins of adrenocorticotropin-secreting pituitary tissue in Cushing's disease. *J Clin Endocrinol Metab* 1992; **75**:1303-1309.
- Drouin J, Bilodeau S, Vallette S. Of old and new diseases: genetics of pituitary ACTH excess (Cushing) and deficiency. *Clin Genet* 2007; **72**:175-182.
- Chrousos GP, Detera-Wadleigh SD, Karl M. Syndromes of glucocorticoid resistance. *Ann Intern Med* 1993; **119**:1113-1124.
- Chu IM, Hengst L, Slingerland JM. The Cdk inhibitor p27 in human cancer: prognostic potential and relevance to anticancer therapy. *Nat Rev Cancer* 2008; **8**:253-267.

- 32 Niendorf S, Oksche A, Kisser A, *et al.* Essential role of ubiquitin-specific protease 8 for receptor tyrosine kinase stability and endocytic trafficking *in vivo*. *Mol Cell Biol* 2007; **27**:5029-5039.
- 33 Byun S, Lee SY, Lee J, *et al.* USP8 is a novel target for overcoming gefitinib resistance in lung cancer. *Clin Cancer Res* 2013; **19**:3894-3904.
- 34 Xia R, Jia H, Fan J, Liu Y, Jia J. USP8 promotes smoothened signaling by preventing its ubiquitination and changing its subcellular localization. *PLoS Biol* 2012; **10**:e1001238.
- 35 Vila G, Theodoropoulou M, Stalla J, *et al.* Expression and function of sonic hedgehog pathway components in pituitary adenomas: evidence for a direct role in hormone secretion and cell proliferation. *J Clin Endocrinol Metab* 2005; **90**:6687-6694.
- 36 Reincke M, Sbiera S, Hayakawa A, *et al.* Mutations in the deubiquitinase gene *USP8* cause Cushing's disease. *Nat Genet* 2015; **47**:31-38.

(**Supplementary information** is linked to the online version of the paper on the *Cell Research* website.)



This work is licensed under the Creative Commons Attribution-NonCommercial-No Derivative Works 3.0 Unported License. To view a copy of this license, visit <http://creativecommons.org/licenses/by-nc-nd/3.0>