

FORUM REVIEW ARTICLE

---

## Redox Regulation of Ion Channels in the Pulmonary Circulation

Andrea Olschewski<sup>1,2</sup> and Edward Kenneth Weir<sup>3</sup>

### Abstract

**Significance:** The pulmonary circulation is a low-pressure, low-resistance, highly compliant vasculature. In contrast to the systemic circulation, it is not primarily regulated by a central nervous control mechanism. The regulation of resting membrane potential due to ion channels is of integral importance in the physiology and pathophysiology of the pulmonary vasculature. **Recent Advances:** Redox-driven ion conductance changes initiated by direct oxidation, nitration, and S-nitrosylation of the cysteine thiols and indirect phosphorylation of the threonine and serine residues directly affect pulmonary vascular tone. **Critical Issues:** Molecular mechanisms of changes in ion channel conductance, especially the identification of the sites of action, are still not fully elucidated. **Future Directions:** Further investigation of the interaction between redox status and ion channel gating, especially the physiological significance of S-glutathionylation and S-nitrosylation, could result in a better understanding of the physiological and pathophysiological importance of these mediators in general and the implications of such modifications in cellular functions and related diseases and their importance for targeted treatment strategies. *Antioxid. Redox Signal.* 22, 465–485.

### Introduction

“WHY GRASS IS GREEN or why our blood is red, are mysteries which none have reach'd unto.” John Donne (1571–1631).

The interaction between the air, the lungs, and the blood has fascinated philosophers and physiologists for centuries. In 1669, an Oxford physician, Richard Lower, reported that it was exposure to air in the lungs that caused the change from dark venous blood to bright arterial blood. However, more than another 200 years elapsed before Bradford and Dean described constriction of the pulmonary arteries (PA) caused by asphyxia (20). The recognition of the involvement of ion channels in hypoxic pulmonary vasoconstriction (HPV) has been relatively recent; of L-type calcium channels in 1976 (86) and of potassium ( $K^+$ ) channels in 1992 (118). The suggestion that redox changes might play a role in the

mechanism of HPV was initially made in 1986 (9) and focused on ion channels in 1993 (4). Subsequently, many laboratories have found changes in reactive oxygen species (ROS) and the redox couples GSH/GSSG and NAD(P)H/NAD(P) in the course of HPV and of chronic hypoxic pulmonary hypertension (PH).

Besides ROS, small signaling chemical species such as nitric oxide (NO), carbon monoxide (CO), and hydrogen sulfide ( $H_2S$ ) molecules participate in the regulation of pulmonary vascular function. Independent of transporters, membrane receptors, or second messenger systems, they freely diffuse through cell membranes and elicit various responses. Oxidative stress is postulated to play a prominent role in the etiology of vascular and ventricular dysfunction that is associated with cardiovascular disease (53, 129, 134, 185). In the pulmonary vasculature and in the heart, changes in the ROS levels result in changes in the redox state of

---

<sup>1</sup>Ludwig Boltzmann Institute for Lung Vascular Research, Graz, Austria.

<sup>2</sup>Experimental Anesthesiology, Department of Anesthesia and Intensive Care Medicine, Medical University of Graz, Graz, Austria.

<sup>3</sup>Department of Medicine, VA Medical Center, University of Minnesota, Minneapolis, Minnesota.

proteins, some of which can be reversed. In part, reversible protein oxidation involves the free thiol (-SH) side chain of cysteine residues that can undergo a number of redox-mediated molecular modifications which may elicit positive or negative changes in protein function (34, 185). Thus, under conditions where ROS levels are markedly elevated and/or oxidoreductase systems are impaired, there is significant alteration in the physiological function of cells, mediated by direct protein oxidation or changes in protein interaction with redox molecules. Although redox-target specification is, no doubt, dictated by the innate susceptibility of the target, additional measures are in place within the cell to prevent accumulation of ROS to toxic levels. This regulation is facilitated, in part, by the discrete subcellular compartmentalization of ROS production, the restricted availability of NADPH oxidase (Nox) activating and regulatory subunits, and the ubiquitous presence of cytosolic scavenging and neutralizing enzymes such as Cu/Zn superoxide dismutases (SODs), glutathione peroxidase (GPx), and peroxiredoxins.

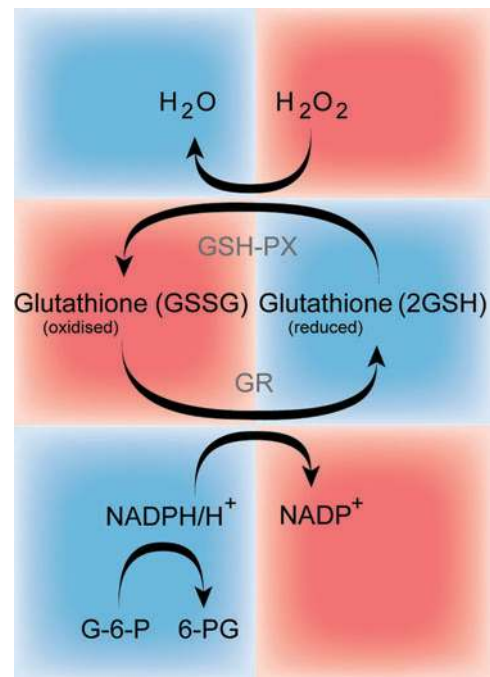
The role of redox regulation in the pulmonary circulation emerged, in part, because the pulmonary vasculature constricts in response to hypoxia, while the ductus arteriosus (DA) and systemic vessels, such as the renal arteries, dilate. It is possible that redox control of ion channels might provide a mechanism which could explain these disparate responses. It is clear that the same redox signal can cause opposite changes of the gating of  $K^+$  channels in the resistance PAs and the DA (102). For instance, the reducing agent dithiothreitol (DTT) inhibits  $K^+$  current and causes depolarization and contraction in the smooth muscle cells (SMCs) of the PA (PASMC), while it activates  $K^+$  current and causes hyperpolarization and relaxation of DASMCs. The oxidizing agent 5',5'-dithio-bis(2-nitrobenzoic) acid (DTNB) has the opposite effects on  $K^+$  current, membrane polarization, and tone in PA and DA SMCs. Similar contrary actions have been described in response to changes in endogenous ROS in PA and renal artery SMCs (89). The fact that the role of redox signaling in the control of ion channels and tone in the PA is not yet agreed probably derives from the variety of ROS generated and methods of their inactivation, variation in ion channel expression in different vessels and different stages of maturation, and the use of a number of different experimental techniques. Are the relevant ROS produced in the mitochondria, by Noxs, in the plasma membrane electron transport (PMET) system, or in all of these places? Which ROS is key, superoxide anion,  $H_2O_2$  or another radical (170)? Given that ROS may rise and fall in different places in the PASMCs during hypoxia, the location of changes is likely to be critical (168). ROS can have different physiologic and pathologic roles, and the overlap of these effects can cause confusion. In this regard, when exogenous ROS or anti-oxidant enzymes are added to cells in culture, attention should be paid as to whether the concentrations used and the sites of administration are physiological or pathological. Furthermore, since ion channels and calcium-handling proteins act as effectors, differences in the ion channels expressed in resistance and conduit vessels and in fetal and adult vessels also have to be considered. Consequently, much of the work discussed in this review is relevant to our understanding of the interaction of redox status, ion channel control, and tone in the pulmonary vasculature.

## Redox Buffer Systems

### Glutathione

The glutathione system includes reduced (GSH) and oxidized (GSSG) forms of glutathione, the enzymes required for its synthesis and recycling, such as gamma-glutamyl cysteine ligase ( $\gamma$ -GCL), glutathione synthetase (GS), glutathione reductase (GR), and gamma-glutamyl transpeptidase ( $\gamma$ -GGT); also, the enzymes required for its use in metabolism and in mechanisms of defense against free radical-induced oxidative damage, such as glutathione s-transferases (GSTs) and GPxs. The glutathione system is one of the most important antioxidant systems for most tissues *in vivo*, and the ratio of oxidized to reduced glutathione (GSSG/GSH) is a widely used indicator of oxidative stress within different cell types. The ratio of reduced glutathione (GSH) to glutathione disulfide (GSSG; oxidized form) is  $> 10$  (43). Under normal circumstances, GSH levels within the cell are maintained *via* recycling of GSSG by the NADPH-dependent enzyme GR (Fig. 1). However, under pathological conditions, the GSH/GSSG ratio can decrease significantly as shown during ischemia/reperfusion in the right ventricle (109).

S-glutathionylation is a redox-dependent post-translational modification with growing recognition in signal transduction. Protein S-glutathionylation (P-SSG), the reversible modification of cysteine thiols by glutathione, is elevated



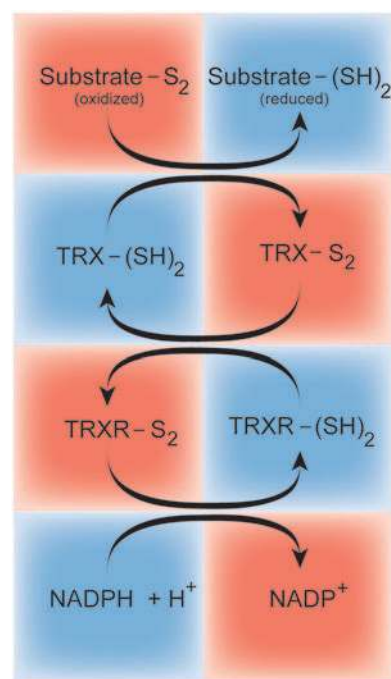
**FIG. 1. The schematic of the glutathione system.** GSH is synthesized from amino acids by the action of  $\gamma$ -glutamylcysteine synthetase and glutamyl synthase. GSH undergoes the GSH-PX coupled reaction, thereby detoxifying ROS such as  $H_2O_2$ . During this reaction, GSH is oxidized and generates GSSG, which is recycled back to GSH by the action of GR at the expense of reduced nicotinamide ( $NADPH/H^+$ ), thus forming the redox cycle. GSH, glutathione; GSH-PX, glutathione-peroxidase; GR, glutathione reductase;  $H_2O_2$ , hydrogen peroxide; ROS, reactive oxygen species. To see this illustration in color, the reader is referred to the web version of this article at [www.liebertpub.com/ars](http://www.liebertpub.com/ars)

in response to oxidative stress. Initially, the function of S-glutathionylation was thought to be the protection of cysteine residues against over-oxidation to sulfenic (RSOH), sulfinic (RSO<sub>2</sub>H), or sulfonic (RSO<sub>3</sub>H) acids, which can result in protein inactivation. Now, S-glutathionylation is considered a real regulatory event in “redox signaling” and it is involved in several pathways, often cross-talking with each other (180). Chen *et al.* have shown in an elegant study that oxidized glutathione (GSSG) induces dose-dependent S-glutathionylation of endothelial nitric oxide synthase (eNOS) in human endothelial cells (EC), with loss of NO and gain of superoxide (O<sub>2</sub><sup>•-</sup>) generation, which is associated with impaired endothelium-dependent vasodilatation in the systemic circulation (23). In the lung, bleomycin induces pulmonary fibrosis and pulmonary vascular remodeling in animal models. Day *et al.* showed, more than 10 years ago, that bleomycin up-regulates GSH and  $\gamma$ -glutamylcysteine synthetase after only 3 h of treatment, indicating the early involvement of the system in the development of the pulmonary vascular remodeling (26). In pulmonary arterial myocytes, the reducing agents, such as GSH, DTT, and NADH, inhibit the large conductance calcium-dependent potassium channel (BKCa) activity; whereas oxidizing agents, such as 5,5'-dithio-bis(2-nitrobenzoic acid) (DTNB) and GSSG, stimulate it (55). Although the role of ATP-sensitive K<sup>+</sup> channel (K<sub>ATP</sub>) in the PAs is almost unknown, it is worthwhile to introduce a recent study by Yang *et al.* showing that H<sub>2</sub>O<sub>2</sub> or pyridine disulfides, pharmacological tools which react with protein cysteine residues similar to S-glutathionylation, markedly inhibit K<sub>ATP</sub> current carried out by the potassium inwardly rectifying channel (Kir)6.1 subunit. Simulation modeling of Kir6.1 S-glutathionylation suggested that after incorporation to residue 176, the channel remains in its closed state (181). Finally, Lock *et al.* have utilized the thiol-oxidant diamide to investigate the consequences of protein S-glutathionylation on the calcium handling protein inositol trisphosphate receptor (IP<sub>3</sub>R) in aortic EC. The authors found that Ca<sup>2+</sup>-induced Ca<sup>2+</sup>-release (CICR) *via* the IP<sub>3</sub>R is enhanced by diamide, which reacts with GSH and, therefore, promotes P-SSG formation (78).

### Thioredoxin

Thioredoxin (Trx), Trx peroxidase, and thioredoxin reductase (TrxR) comprise the thioredoxin system that exists in nearly all living cells (Fig. 2). The Trx system reduces oxidized cysteine groups on proteins through an interaction with the redox-active center of TRX (Cys-Gly-Pro-Cys) and forms a disulfide bond, which, in turn, can be reduced by Trx reductase and NADPH. It functions in thiol-dependent thiol-disulfide exchange reactions and activation of transcription factors (such as NF- $\kappa$ B and AP-1) that are crucial to control of the reduced intracellular redox environment, cellular growth, defense against oxidative stress, and control of apoptosis. In line with these observations, both Trx and TrxR are already regarded as interesting targets for chemotherapy, and they represent novel therapeutic options for pulmonary vascular and/or right heart remodeling.

Trx is ubiquitously expressed in EC (36) and in vascular smooth muscle cells (VSMC) of normal arteries (22). While treatment with H<sub>2</sub>O<sub>2</sub> increases Trx expression in EC, suggesting that Trx is an ROS-inducible protein in EC, the ex-



**FIG. 2. The thioredoxin system.** The TRX in the oxidized (TRX-S<sub>2</sub>) or reduced [TRX-(SH)<sub>2</sub>] state. The oxidized thioredoxin is converted by the TRXR and NADPH to its reduced state, where TRX directly reduces disulfides in oxidized substrate proteins (Substrate-S<sub>2</sub>). TRX, thioredoxin; TRXR, thioredoxin reductase. To see this illustration in color, the reader is referred to the web version of this article at [www.liebertpub.com/ars](http://www.liebertpub.com/ars)

pression of Trx in VSMC is not regulated by ROS. It appears that Trx acts to reduce cellular oxidative stress by scavenging ROS, and might, therefore, attenuate the pathology associated with vascular disease. Trx and TrxR are present in distinct isoforms that are predominantly cytosolic (Trx1 or TrxR1) or mitochondrial (Trx2 and TrxR2). While the Trx system has been extensively investigated in lung diseases and in epithelial cells, its role in pulmonary vascular cells and in right heart diseases is largely unknown. In the pulmonary vasculature, transient-receptor potential cation (TRPC) channels are widely expressed. Xu *et al.* have detected Trx as a novel type of ion channel agonist that acts through its reduced form to break a restraining intra-subunit disulfide bridge between cysteine residues in TRPC5, thereby stimulating the channel and resulting in an increased calcium influx, either as a homomeric assembly or as a heteromultimer with TRPC1. A transduction mechanism is, therefore, revealed that can directly couple ion channel activity to extracellular reduced thioredoxin (179).

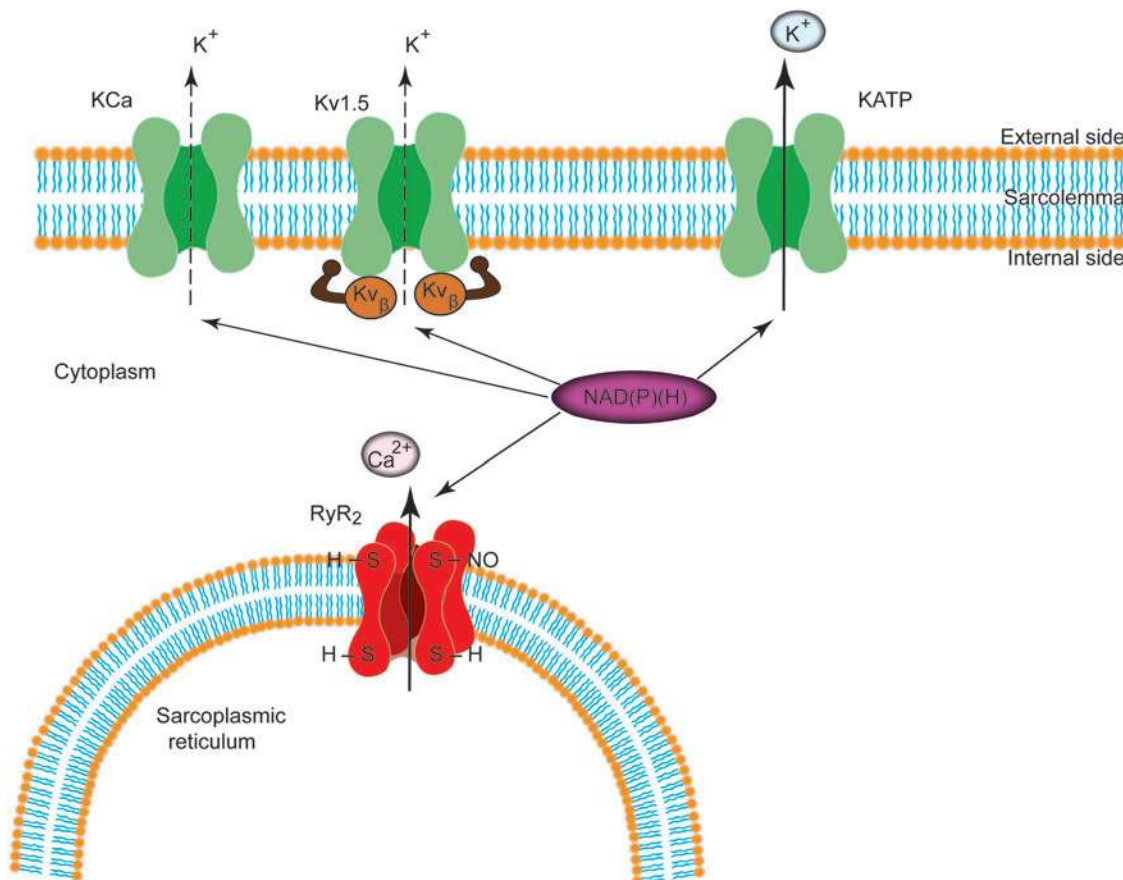
### NAD(P)H/NAD(P)<sup>+</sup>

The two specialized pyridine nucleotide systems (NAD<sup>+</sup>/NADH and NADP<sup>+</sup>/NADPH) are optimized for the ready exchange of electrons and for recognition by specialized nucleotide-binding domains located at the active sites of >200 different oxidoreductases (60). Moreover, these enzymes also can distinguish between reduced and oxidized states of the nucleotide and by specifically recognizing the phosphorylation state of the ribose ring, between NAD<sup>+</sup> and NADP<sup>+</sup>. NADP(H) is recognized by enzymes that are

primarily involved in anabolic (reductive) reactions, such as lipid or cholesterol synthesis or fatty acid chain elongation; whereas NAD(H) is recognized by enzymes which catalyze catabolic reactions of glycolysis and by components of the electron transport chain (ETC) and, therefore, play an important role in (pulmonary) SMCs.

Due to the low glycolytic flux and the ability of mitochondria to oxidize cytosolic NADH by the malate-aspartate and glycerol phosphate shuttles, under normal aerobic conditions, cytosolic nicotinamide-adenine dinucleotides are mostly oxidized (*i.e.*, present as  $\text{NAD}^+$ ) with an  $\text{NADH}/\text{NAD}^+$  ratio  $< 0.05$  (16, 75). However, during ischemia, for example, the cytosolic  $\text{NADH}/\text{NAD}^+$  ratio can increase approximately 30 times (112). The ratio of  $\text{NADH}/\text{NAD}^+$  fluctuates in response to changes in metabolism. The key enzyme that regulates cytosolic  $\text{NADH}/\text{NAD}^+$  levels is glyceraldehydes(s) 3-phosphate dehydrogenase (GAPDH) which is located in the sarcoplasmic reticulum (SR) membrane (178). Thus, changes in activity of this enzyme may result in more significant fluctuations of local  $\text{NADH}/\text{NAD}^+$  levels in close proximity to SR-bound proteins (such as the ryanodine receptor [RyR] and sarcoplasmic/endoplasmic reticulum calcium ATPase [SERCA]) which might also explain the high compartmentalization of redox states within cytosolic subregions.

In PSMCs, changes in potassium conductance directly regulate membrane potential and thus vascular tone. Both KCa and the voltage-gated potassium channels (Kvs) are regulated by pyridine nucleotides (110, 113, 154, 157) (Fig. 3). The regulatory  $\beta$ -subunits of the Kv1.5 bind to pyridine nucleotides with a high affinity, enabling the Kv $\beta$  to respond to a wide range of metabolic conditions by being sensitive to changes in both NADP(H) and NAD(H) levels (77). Several observations indicate that  $\text{NAD(P)}^+$  binding induces a specific conformational change that prevents Kv $\beta$ -induced inactivation, supporting  $\text{K}^+$  conductance; whereas NADP(H) binding preserves or promotes inactivation (110, 111, 155–157, 175). In contrast, the Kv2.1 protein is not associated with a pyridine-binding subunit, such as Kv $\beta$ , and direct binding of pyridine nucleotide to Kv2.1 has not yet been demonstrated. Furthermore, recent work has shown that  $\text{NAD}^+$  modifies the activity of the transient-receptor potential cation channel, subfamily M (TRPM), member 2 channels and, thus, regulates calcium homeostasis. Data from whole-cell patch-clamp experiments show that intracellular dialysis with  $\text{NAD}^+$  evokes a large inward current in cells expressing TRPM2 channels. In HEK-293 cells, intracellular application of  $\text{NAD}^+$  results in instantaneous activation of the channel, suggesting that  $\text{NAD}^+$  directly activates the channel without the involvement of cytoplasmic or membrane components (63).



**FIG. 3. Regulation of potassium channels and the RyR/ $\text{Ca}^{2+}$  release channel (RyR2) by pyridine nucleotides.** Hypothetical scheme showing the regulation of plasma membrane and intracellular ion channels by NAD(P)(H). Individual cells may or may not express the entire complement of ion channels shown in the figure. RyR, ryanodine receptor. To see this illustration in color, the reader is referred to the web version of this article at [www.liebertpub.com/ars](http://www.liebertpub.com/ars)

### NO and S-nitrosylation

The radical gas NO diffuses freely from its site of production in the pulmonary EC to its target, soluble guanylate cyclase (sGC) in the smooth muscle, and is involved in a number of roles within the endothelium, regulating vascular tone, vascular growth, platelet aggregation, and modulation of inflammation (24). As such, decreased bioavailable NO results in endothelial dysfunction, which is a characteristic feature of many disease states.

NO is generated by the three isoforms of NO synthase (NOS): eNOS, neuronal (nNOS), and inducible (iNOS) isoenzyme. The classical NO signaling pathway is the activation of sGC enhancing cyclic guanosine monophosphate (cGMP) production, which, in turn, mediates vasodilatation. The alternative NO signaling pathway is S-nitrosylation (SNO; see next paragraph). NO has a modest role as a vasodilator in the pulmonary circulation under most basal physiological conditions. However, endogenous NO seems to suppress the full expression of HPV (8, 69, 70). In addition, since NO inhibits proliferation of VSMCs, it may also function to prevent the remodeling associated with the development of PH (142). Fagan *et al.* evaluated the importance of each NOS isoform in the maintenance of pulmonary vasomotor tone using isolated-perfused lungs from mice deficient in each NOS isoform. The investigators reported that under basal conditions, nNOS and iNOS have little or no role in the maintenance of low pulmonary tone in contrast to eNOS (32, 33). In addition, eNOS activity was an important determinant of pulmonary vascular responsiveness to chronic hypoxia, *in vivo* (32, 33, 143). The effect of eNOS-derived NO appeared to be most prominent under modest hypoxic stress when HPV was augmented in eNOS<sup>-/-</sup> mice (32, 33). The latter finding is, however, controversial (121, 144). Finally, a recent elegant study by Seimetz *et al.* highlighted the relevance of iNOS activity in bone marrow-derived cells for the development of PH *in vivo* (135). The reaction of NO with sGC results in a several 100-fold increase in production of cGMP from guanosinotriphosphate (GTP). In VSMCs, the effects of cGMP are mediated through activation of its effector proteins, the cGMP-dependent protein kinase, cGMP-gated ion channels, such as calcium-activated potassium channels, and cGMP-regulated phosphodiesterases.

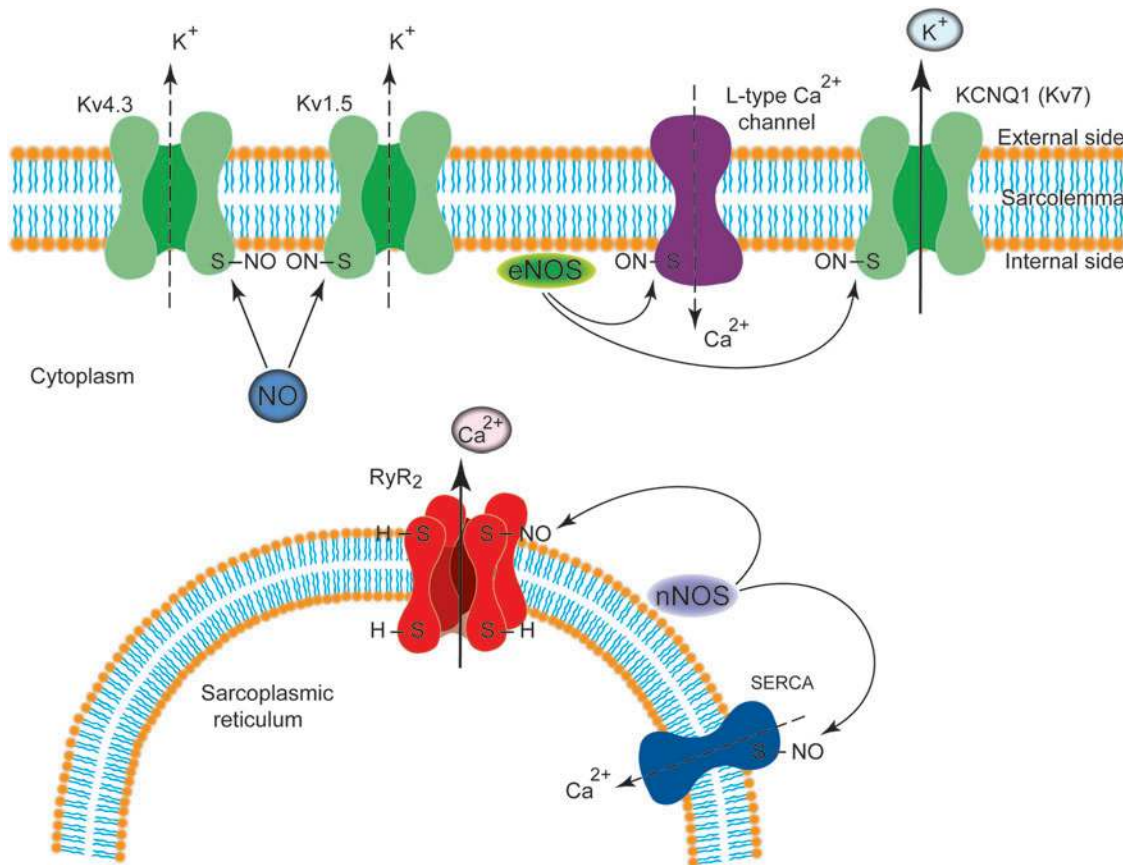
Recent investigations show that many effects of NO in the vasculature are mediated by S-nitrosylation, the covalent modification of a protein cysteine thiol by an NO group to generate an S-nitrosothiol as recently reviewed in detail (48, 74). The composition of SNO-based signaling complexes also includes NOSs; NO group donors, including S-nitrosoglutathione (GSNO) and other SNO-proteins that can participate in transnitrosylation reactions; and denitrosylases which curtail the signals. Ion channels and transporters participating in calcium homeostasis have been reported to be modulated by S-nitrosylation. Among Kvs, a recent report has shown that S-nitrosylation of the potassium voltage-gated channel, KQT-like subfamily, member 1 (KCNQ1) subunit facilitates the slowly activating component of the delayed rectifier K<sup>+</sup> current (10); whereas S-nitrosylation exerts an inhibitory influence on Kv4.3 and thus the transient outward potassium current (39). In addition, Nunez *et al.* have shown that NO inhibits hKv1.5 channels by a cGMP-dependent mechanism and by the direct S-nitrosylation of the protein (100). Sun *et al.* as well as

Poteser *et al.* have reported that S-nitrosylation of the  $\alpha 1C$  subunit of the L-type calcium channel inhibits the L-type calcium current, perhaps due to eNOS-induced NO production, which is adjacent to the calcium channels in the sarcolemmal membrane caveolae (120, 147). Finally, in cardiomyocytes, the RyR/Ca<sup>2+</sup> release channel (RyR2) has been shown to be activated by S-nitrosylation (40, 148) (Fig. 4). The emergence of SNOs as second messengers and of S-nitrosylation as the pre-eminent NO-based signal may represent a new era in pulmonary vascular physiology, as a disruption of the SNO/redox balance in myocytes, for example, in pulmonary vascular remodeling can occur. Consequently, the restoration of this equilibrium might provide a fruitful approach to restoring pulmonary vascular and/or right ventricular performance.

### Reactive oxygen species

The cellular mechanisms responsible for HPV have been debated since the description of this physiological mechanism by Euler and Liljestrand (30). Since the 1970s, there has been a keen interest to identify specific ROS altered during hypoxia and their generating source(s). Thus, in the pulmonary circulation, Noxs and mitochondria have been identified as the major sources producing ROS and initiating ROS signaling. They seem to be interdependent, at least in acute HPV. However, there is still a major controversy as to whether ROS go up or down during hypoxia. Such a discrepancy is likely related to differences in preparations and detection methods (each of which has its own severe, specific limitations) as summarized in Table 1 [modified from Olschewski and Weir (104)]. Since the changes in ROS in the pulmonary circulation are not the focus of this review, we would like to highlight recent reviews dealing extensively with the topic (62, 96, 132, 150).

A number of publications suggest that the hypoxic increase or decrease in intracellular ROS concentration can affect the activity of ion channels, resulting in a large increase in intracellular Ca<sup>2+</sup> concentration in PASMCs (7, 80, 81, 94, 128). Although most of these studies applied the measurement of the global intracellular calcium concentration as one of the major read-outs, unfortunately, there are a few studies specifically targeting Nox (homologues) or mitochondria under acute or chronic hypoxia (or hyperoxia) in the pulmonary circulation in order to investigate the direct interaction between the ion channels and ROS. One of the potential mechanisms by which ROS are able to regulate pulmonary vascular tone involving ion channels is *via* the control of the cellular redox potential. According to the redox theory, acute hypoxia decreases the release of a mitochondrial-derived ROS (hydrogen peroxide) and/or increases the NAD(P)H/NAD(P) ratio, resulting in contraction through the reduction of thiol groups of the channel and causing PASMC membrane depolarization as a result of closure of cell membrane potassium channels (4, 9, 95). Although *in vitro* experiments almost universally demonstrate an elevation in intracellular calcium concentration during hypoxia and similar mechanisms as for potassium channels indicated earlier might be also true for calcium channels, alternative pathways of HPV focus mainly on the source of ROS or on second messengers (cyclic adenosine diphosphate [cADP]-ribose, diacylglycerol [DAG] or calmodulin). Thus, our knowledge about Nox or mitochondria-produced ROS-driven direct regulation of calcium-handling proteins expressed in the pulmonary circulation is still very limited (136–138, 141).



**FIG. 4. S-nitrosylation of ion channels in myocytes.** S-nitrosylation modulates function of different ion channels expressed either in the cell membrane (sarcolemma) or in the sarcoplasmic reticulum of myocytes. *Arrows* indicate activation, whereas *dotted line* indicates inhibition. To see this illustration in color, the reader is referred to the web version of this article at [www.liebertpub.com/ars](http://www.liebertpub.com/ars)

**NADPH oxidase.** Many studies have investigated the role of the Nox in the pulmonary circulation during more than the last 20 years; however, only recently reports link their findings to Nox subtypes. The Nox family consists of seven catalytic homologues, four of which (Nox1, Nox2, Nox4, and Nox5) are found in the vasculature. These enzymes transfer electrons from NADPH to molecular oxygen, thus producing superoxide. The enzyme complex in phagocytes comprises at least five components: two cytosolic subunits p47phox and p67phox, a cell membrane-bound cytochrome b558, which consists of gp91phox (renamed Nox2) and p22phox, and a small G protein Rac. Under physiological conditions, Nox proteins (Nox1, Nox2, Nox4, and Nox5) and their products superoxide and hydrogen peroxide participate in cardiovascular homeostasis by contributing to cell differentiation, repair of damaged tissue, and regulation of vascular tone and, thus, blood pressure (68).

**Acute HPV.** The TWIK-related acid-sensitive potassium channel 1 (TASK-1), which is commonly expressed in oxygen-sensing cells and conveys a background K<sup>+</sup> current, is inactivated by hypoxia. However, TASK-1 *per se* cannot sense oxygen and may require a regulatory protein that can do so. Lee *et al.* proposed that Nox4 functions as an oxygen-sensing partner and that it modulates the oxygen sensitivity of TASK-1. In their study, the oxygen sensitivity of TASK-1

was abolished by Nox4 siRNA and Nox inhibitors, suggesting a novel function for Nox4 in the oxygen-dependent regulation of TASK-1 activity (71).

**Chronic hypoxic PH.** The chronic effects of ROS on ion channels are mediated *via* transcription factors. In a very recent study, Mittal *et al.* provided evidence for the regulation of the Kv1.5 channels by Nox4-derived ROS and for the development of pulmonary vascular remodeling, showing that sustained hypoxia decreases Kv channel currents by a direct effect of an Nox4-derived increase in ROS (92). Support for their findings was provided by Sturrock *et al.*, reporting the cross-talk between transforming growth factor (TGF)- $\beta$ 1 and Nox4, and thus implications for mechanisms of pulmonary vascular remodeling. They have suggested that TGF- $\beta$ 1 may facilitate proliferation by up-regulating Nox4 and ROS production, with transient oxidative inactivation of phosphatases and augmentation of growth signaling cascades (145). There is accumulating evidence that the Nox enzymes, and in particular Nox4, play an important role in chronic responses of the pulmonary vasculature to changes in oxygen tension. These exciting findings may facilitate our understanding of the pathophysiology of PH secondary to chronic hypoxia. However, elucidation of the role of redox-regulated ion channels in chronic hypoxia-driven pulmonary vascular remodeling needs further combined efforts.

TABLE 1. CHANGES IN THE REACTIVE OXYGEN SPECIES PRODUCTION UNDER HYPOXIA IN DIFFERENT PREPARATIONS

<i>Tissue/preparation</i>	<i>Hypoxia</i>	<i>[ROS]<sub>i</sub></i>	<i>Technique of detection</i>	<i>References</i>
Isolated rabbit lung	Minutes	↓	Lucigenin	Paky <i>et al.</i> (108)
Isolated rat lungs, pulmonary artery ring, PASMCS	Minutes	↓	Lucigenin, amplex red, dihydroethidium, H <sub>2</sub> DCF	Archer <i>et al.</i> (6)
Isolated rabbit lung	Minutes	↓	Lucigenin	Weissmann <i>et al.</i> (174)
Calf pulmonary arteries	Minutes	↓	Lucigenin	Mohazzab and Wolin (93)
Rat pulmonary artery	Minutes	↓	Lucigenin, amplex red, H <sub>2</sub> DCF	Michelakis <i>et al.</i> (89)
Rat pulmonary artery	Weeks	↓	L-012 (luminol analogue) amplex red	Bonnet <i>et al.</i> (19)
Human PASMCS	Hours	↓	Lucigenin, amplexred, dihydroethidium, H <sub>2</sub> DCF	Mehta <i>et al.</i> (88)
Human PASMCS	Minutes	↓	Dihydroethidium	Wu <i>et al.</i> (176)
Isolated mouse lung	Minutes	↑	Electron spin resonance	Weissmann <i>et al.</i> (173)
Rat pulmonary arteries	Minutes	↑	H <sub>2</sub> DCF	Jernigan <i>et al.</i> (56, 57)
	Weeks	↑		
Rat pulmonary arteries	Hours	↑	Dihydroethidium	Wang <i>et al.</i> (162)
Mouse pulmonary arteries, rabbit PASMCS	Minutes	↑	H <sub>2</sub> DCF	Paddenberg <i>et al.</i> (107)
Porcine pulmonary arteries	Minutes	↑	Electron paramagnetic resonance, H <sub>2</sub> DCF, lucigenin	Liu <i>et al.</i> (76)
	Weeks	↑		
Calf PASMCS	Minutes	↑	Lucigenin	Marshall <i>et al.</i> (85)
Rat PASMCS	Minutes	↑	H <sub>2</sub> DCF	Killilea <i>et al.</i> (61)
Rat PASMCS	Minutes	↑	Fluorescence resonance energy transfer probe, H <sub>2</sub> DCF	Waypa <i>et al.</i> (165, 166)
Mouse PASMCS	Minutes	↑	Cytochrome <i>c</i> reduction assay, H <sub>2</sub> DCF	Rathore <i>et al.</i> (122, 123)
Mouse PASMCS	Minutes	↑	H <sub>2</sub> DCF, lucigenin, Redox Sensor Red CC-1	Wang <i>et al.</i> (161)
Human PASMCS	Hours	↑	Dihydroethidium	Wu <i>et al.</i> (176)

Modified from Olschewski and Weir (104).

H<sub>2</sub>DCF, dichlorodihydrofluorescein; PASMCS, pulmonary artery smooth muscle cell; ROS, reactive oxygen species.

**Mitochondria.** The mitochondria play an important role in normal vascular physiology, for HPV and potentially for the development of PH, which has been extensively reviewed during recent years (2, 28, 115, 138, 140, 164, 167, 168). In the mitochondria, ROS are produced by the ETC at complexes I, II, and III. The non-charged H<sub>2</sub>O<sub>2</sub> diffuses through the outer membrane to access the cytosol, superoxide reaches the cytosol through the trans-plasma-membrane electron transport protein, the voltage-dependent anion channels. During the last decade, large numbers of studies on mitochondria have been carried out, focusing on the role of the ETC as an oxygen sensor for hypoxia and HPV. Investigations providing evidence for the direct regulation of calcium-handling proteins and particularly of K<sup>+</sup> channels by the ETC, however, are limited. In addition, the identification of the main site for ROS production within the mitochondria is still a matter of debate.

**Acute hypoxia-induced changes initiated by ROS production by mitochondria.** In PASMCS and in SMCs from systemic mesenteric artery (MA), Firth *et al.* investigated differences in functional coupling between mitochondria and K<sup>+</sup> channels (35). They found that mitochondria are located significantly closer to the plasmalemmal membrane in PASMCS compared with MASMCS. Consistent with these findings, the effects of mitochondrial inhibitors on K<sup>+</sup> current were significantly more potent in PASMCS than in MASMCS, suggesting a greater structural and functional coupling between mitochondria and K<sup>+</sup> channels in PASMCS. In SMCs

from human DA, ETC inhibitors (rotenone and antimycin) mimicked hypoxia, increasing K<sup>+</sup> current and reversing constriction to oxygen, as shown by Michelakis *et al.* (90). They concluded that normoxia controls human DA tone by modulating the function of the mitochondrial ETC, thereby varying mitochondrial membrane potential and the production of H<sub>2</sub>O<sub>2</sub>, which regulates DASMCS K<sup>+</sup> channel activity and DA tone.

**Effects of chronic hypoxia.** In human PASMCS, chronic hypoxia activates mitochondrial K<sub>ATP</sub> channels, resulting in depolarization of mitochondrial membrane potential, increase of cytochrome C accumulation, and stimulation of mitochondrial H<sub>2</sub>O<sub>2</sub> overproduction (54). However, in Fawn Hooded rats, Bonnet *et al.* have shown that mitochondrial dysfunction results in hyperpolarized mitochondria due to deficiency in components of several electron transport complexes, particularly complex I and SOD2. The net result of these abnormalities was reduced to total ROS production mimicking chronic hypoxia and causing normoxic activation of hypoxia-inducible factor (HIF)-1 $\alpha$ , which then inhibited expression of oxygen-sensitive, voltage-gated Kv1.5, postulating a novel pathway of Kv channel regulation by mitochondrial membrane potential changes (19).

**Trans-plasma membrane electron transport.** The trans-plasma membrane electron transport (t-PMET) has been established with the discovery of the transmembraneous NADPH dehydrogenase (25, 42, 59). T-PMET enables

reduction of extracellular oxidants at the expense of intracellular reducing equivalents. Thus, the cell can respond to changes in the redox microenvironment, regulating a variety of biological functions, including proton pumping and cell metabolism, cell growth, or even activity of ion channels (27). The t-PMET is a balanced interplay of several components that have been identified during the last two decades. Some are ubiquitously expressed, and others are only present in certain cell types. Some utilize only a subset of electron donors or acceptors, whereas others are less specific (83). The key components of t-PMET are intracellular electron donors [e.g., NAD(P)H] and either enzyme-mediated and/or shuttle-based electron transfer such as NAD(P):quinone oxidoreductase 1 (NQO1), disulfide-thiol exchanger (ENOX), members of the NOX family, and voltage-gated anionic channels also called porins or Coenzyme Q (CoQ); the last acts as a mobile electron shuttle (Fig. 5). Different strategies can be applied to identify the components that are responsible for the electron transport and to measure their activity, including measuring oxygen consumption, monitoring the disappearance of the electron donor (NAD(P)H), measuring the reduction of artificial electron acceptors, determining the amount of superoxide formation, and measuring ubiquinone reduction or hydroquinone oxidation (27).

A role for the t-PMET system and in particular the central function of Nox-driven superoxide in cardiovascular diseases, including PH and right heart failure, is very likely as discussed in detail earlier (see NADPH Oxidase section). However, most of the studies about the role of the other components have been carried out with a focus on the systemic circulation. The NQO1 in the lung has been investigated in several studies (11, 15, 16). Recently, Bongard *et al.* have shown that alterations in CoQ1 redox metabolism, either by addition of the complex I inhibitor rotenone or exposure of the animal to hyperoxia, can reveal a decrease in mitochondrial complex I activity (18). In addition, by using bovine pulmonary arterial EC, they have demonstrated that the cytoplasmic redox status, as reflected in the NADH/NAD<sup>+</sup> and NADPH/NADP<sup>+</sup> ratios, affects t-PMET reduction of thiazine compounds and NQO1-mediated quinone reduction (16). Ion channels in the pulmonary circulation are

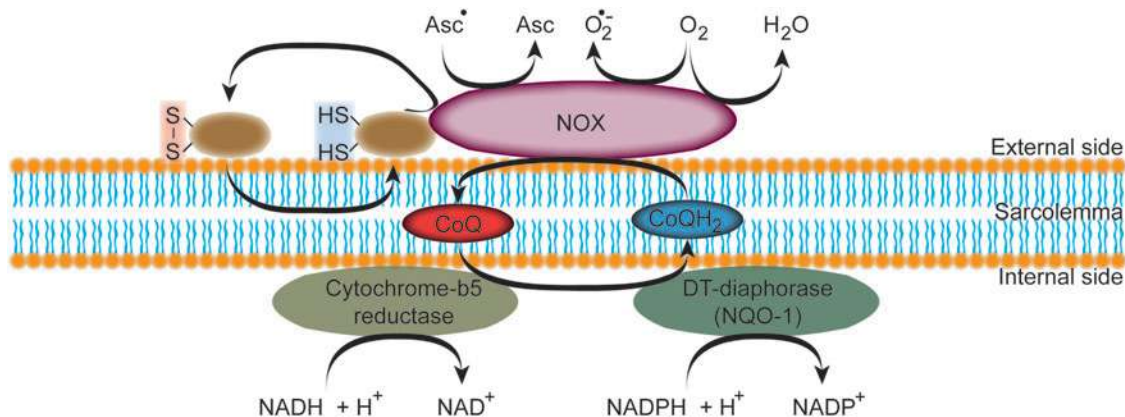
also affected by t-PMET. Our group described the effect of CoQ10 and duroquinone on K<sup>+</sup> channels in PASMCs and showed that both inhibited the whole-cell K<sup>+</sup> channel current, resulting in depolarization of the SMC membrane (126). Thus, CoQ10 and duroquinone, similar to hypoxia or ETC inhibition, shift the K<sup>+</sup> channels to the more reduced state, resulting in the closing of the channels. On balance, cellular metabolism generates excess reducing equivalents that the t-PMET system exports to oxygen. Hypothetically, hypoxia may result in a greater concentration of reducing equivalents at the cell membrane, where they can modulate the activity of the ion channels.

### Redox-Sensitive Enzymes

Hydrogen peroxide and superoxide can alter the function of proteins by oxidizing aromatic residues such as histidine, tyrosine, tryptophan, and phenylalanine; sulfur-containing amino acids such as cysteine and methionine or by resulting in carbonylation of catalytic active sites containing lysine, arginine, proline, or threonine; or the racemization of lysine, arginine, or aspartate. Thus, ROS fine tune the duration and amplification of the phosphorylation signal. The oxidation of cysteine has been the focus of the majority of redox-signaling investigations as a result of the widely acknowledged role of this redox reaction in mediating intracellular signal transduction due to forming a disulfide bond (S-S) (29, 67). From a signaling perspective, it is the reversible cysteine modification that is most relevant, because hyperoxidation tends to occur predominantly during conditions of oxidative stress, promoting enzyme inactivation and degradation [for detailed reviews, see Refs. (62, 124)].

### Receptor and non-receptor TK

The level of protein tyrosine phosphorylation is the function of opposing actions of protein tyrosine kinases and protein tyrosine phosphatases (PTPs). All PTPs contain a catalytic cysteine residue in the active site, and oxidation of this residue results in the inactivation of the PTP activity (158), which is recognized as a major mechanism by which ROS regulate the level of protein tyrosine phosphorylation. However, a number



**FIG. 5. Schematic representation of the t-PMET.** At the cytosolic side of the plasma membrane, a quinone reductase is present that reduces CoQ to ubiquinol (CoQH<sub>2</sub>). CoQH<sub>2</sub> shuttles the electrons to the NOX that is able to reduce extracellular ascorbyl radicals (Asc<sup>•</sup>) produce superoxide (O<sub>2</sub><sup>•-</sup>), reduce O<sub>2</sub> to water, and reduce protein disulfides. CoQ, Coenzyme Q; NOX, NADPH oxidase; t-PMET, trans-plasma membrane electron transport. To see this illustration in color, the reader is referred to the web version of this article at [www.liebertpub.com/ars](http://www.liebertpub.com/ars)

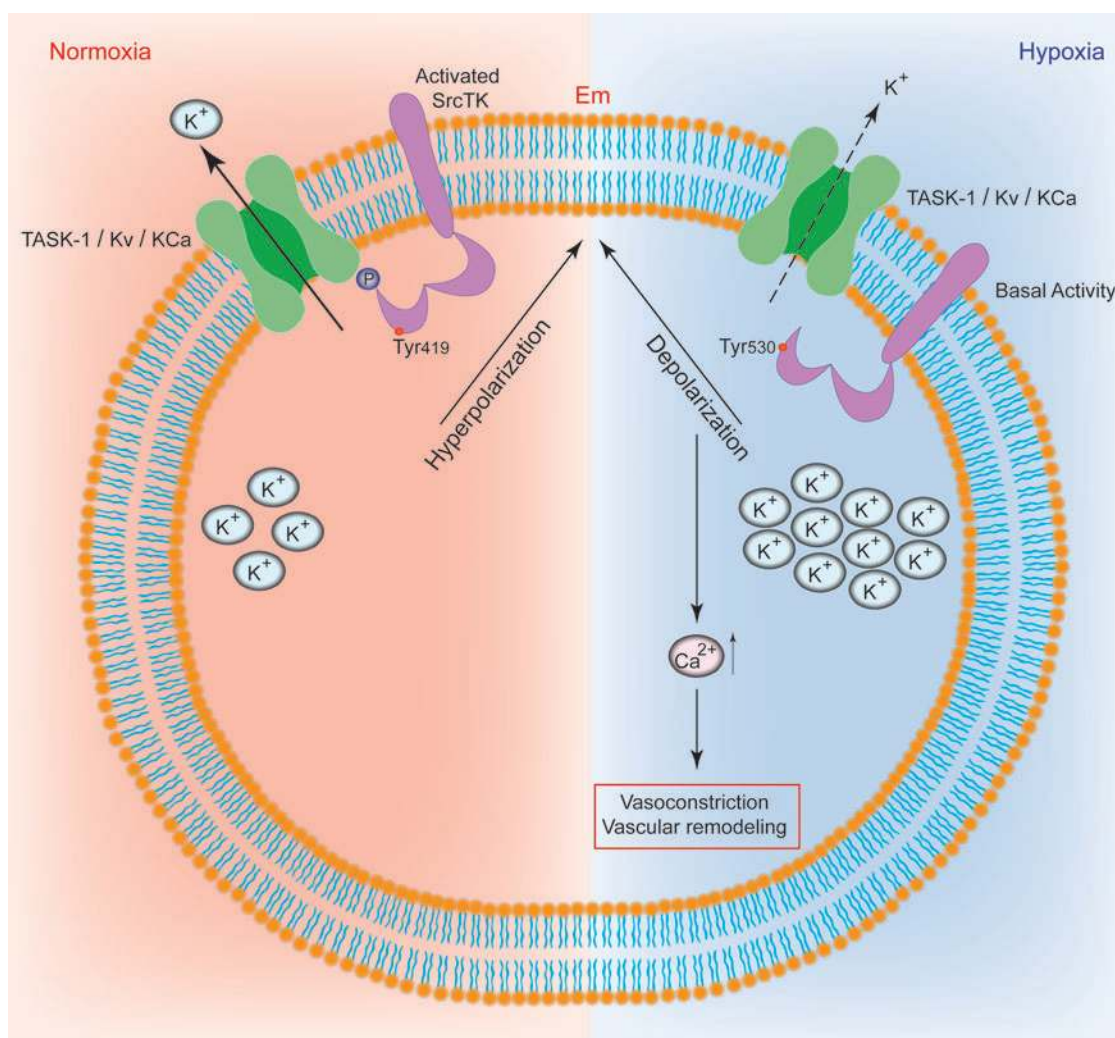


of studies suggest that the proto-oncogene tyrosine-protein kinase Src (src as a short for sarcoma) also plays an important role in the cellular response to ROS, because Src specific inhibitors and dominant negative Src mutants strongly attenuate the cellular response to ROS (87).

Receptor tyrosine kinases (RTKs) such as the insulin receptor, epidermal growth factor receptor, platelet-derived growth factor (PDGF) receptor, and the protein kinase receptor c-ret have been reported to undergo direct oxidation (98). We have recently proposed that hypoxia and PDGF-BB up-regulate protease-activated receptor-2 (PAR-2) expression in PASMCM (66). This effect was reversed by HIF-1 $\alpha$  depletion or the RTK inhibitor Imatinib. The PAR-2 expression observed in SMCs of pulmonary vessels of mice exposed to hypoxia was attenuated by Imatinib treatment, strengthening the link between hypoxia and RTK in PASMCMs. Although there are increasing numbers of clinical studies investigating the role of

RTK inhibition for the treatment of PH (38, 153), experimental evidence for the redox regulation of RTK in the pulmonary circulation is largely missing.

The non-RTK Src contains regulatory structures such as a myristoylation motif, a unique region, an Src homology (SH)3 domain, an SH2 domain, and a regulatory tail in addition to the catalytic domain. Src activity is regulated directly by reversible phosphorylation on multiple tyrosine (tyr) and serine (ser) residues, which are also targets for redox control. We recently reported that Src controls K<sup>+</sup> channel function in human PASMCMs in response to changes in oxygen tension (Fig. 6) (97a). We showed that moderate hypoxia decreased the level of phospho-SrcTK (at tyr419) and reduced the co-localisation of the TASK-1 channel and phospho-SrcTK, resulting in closure of the channel. Our results indicate that the modulation of SrcTK is a crucial factor controlling K<sup>+</sup> channels, acting under normoxic conditions



**FIG. 6. Schematic representation of the t-PMET.** Scheme of the proposed interplay between potassium channels and c-Src in human PASMCMs. Under normoxia, the phospho-Src (active-Src, phosphorylated at Tyr419) binds to TASK-1 channels, resulting in functional TASK-1 channels. Active TASK-1 channels maintain negative resting potential in hPASMCMs. In hypoxia, the phospho-Src (active-Src) is decreased. Closed potassium channels result in depolarization and increased intracellular calcium levels. (+) Indicate increase and (-) indicate decrease. Em, resting membrane potential; KCa, calcium-dependent potassium channel; Kv, voltage-gated potassium channel; PASMCM, pulmonary artery smooth muscle cells; TASK-1, TWIK-related acid-sensitive potassium channel-1. To see this illustration in color, the reader is referred to the web version of this article at [www.liebertpub.com/ars](http://www.liebertpub.com/ars)

as a cofactor to set a negative resting membrane potential in human PASMCs and low resting pulmonary vascular tone.

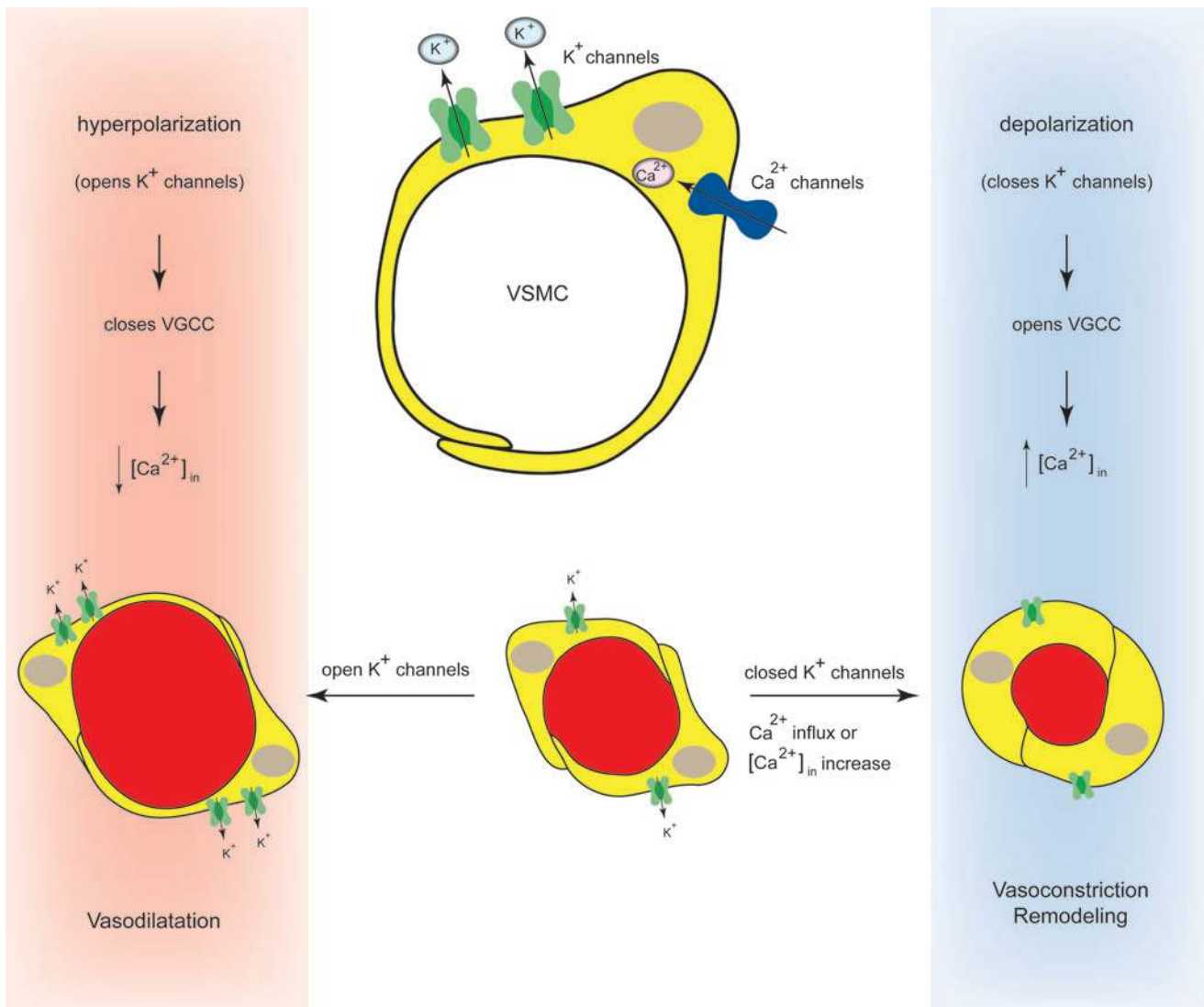
### Redox Modulation of Ion Channels and Transporters in the Pulmonary Circulation

Redox modulation of ion channel activity seems to be an important regulatory mechanism under physiological conditions for several vasomotor functions, including not only regulation of cell membrane potential and vascular tone but also activation of transcription factors required for the expression of genes, apoptosis and necrosis, and cellular protective mechanisms against ischemic or hypoxic insults. Acute contraction of PASMCs is activated, in part, by a potassium ( $K^+$ ) inhibition-induced membrane depolarization and subsequent  $Ca^{2+}$  entry through nifedipine-sensitive L-type  $Ca^{2+}$  channels (Fig. 7). The global  $Ca^{2+}$  release is the result of different localized elementary  $Ca^{2+}$  release events, termed receptor- and store-operated  $Ca^{2+}$  influx pathways

(64). Extrusion of  $Ca^{2+}$  through the plasma membrane is mediated by the plasma membrane  $Ca^{2+}$ - $Mg^{2+}$  ATPase, or  $Ca^{2+}$  pump, and the  $Na^+$ / $Ca^{2+}$  exchanger (NCX). In addition, the inward transportation of  $Ca^{2+}$  through the reverse model of NCX is important for maintaining a high cytosolic  $Ca^{2+}$  concentration and refilling  $Ca^{2+}$  into the SR/ER via SERCA, when cytosolic  $Na^+$  concentration is increased locally by increased  $Na^+$  influx through transient-receptor potential (TRP) channels (72).

#### Potassium ( $K^+$ ) channels

Different types of  $K^+$  channels are sensitive to redox modulation. In the endothelial (porcine aortic endothelial cell [PAEC]) and in the PASMCs, the  $K^+$  current is an ensemble, reflecting the activity of many different channels. At least four classes of  $K^+$  channels have been identified in the cells of the wall of the PAs: voltage-gated  $K^+$  channels ( $K_v$ ) (31, 117, 183), calcium-dependent  $K^+$  channels ( $K_{Ca}$ ) (1, 114),



**FIG. 7. Regulation of pulmonary vascular tone by potassium channels.** Acute contraction of PASMCs is activated, in part, by a potassium ( $K^+$ ) inhibition-induced membrane depolarization and subsequent  $Ca^{2+}$  entry through nifedipine-sensitive L-type  $Ca^{2+}$  channels. To see this illustration in color, the reader is referred to the web version of this article at [www.liebertpub.com/ars](http://www.liebertpub.com/ars)

$K_{ATP}$ s (99), and the more recently identified family of two-pore domain  $K^+$  ( $K_{2P}$ ) channels (103). Different types of Kv channels have been shown to be expressed in the pulmonary vasculature (5, 7, 183). At the molecular level, Kv channels are homo- or heteromultimeric tetramers that are composed of two structurally distinct subunits: the pore-forming  $\alpha$ -subunits and the regulatory  $\beta$ -subunits (52). Nine families of Kv channels  $\alpha$ -subunits are recognized from cloning studies (Kv1–9) (52, 116), each with subtypes (*e.g.*, Kv1.1–1.6). To date, 12 different Kv channel proteins have been described. We have extensively reviewed the response of the  $K^+$  channels in PSMCs to acute and chronic hypoxia (171) and also described in our earlier work the graded response of the  $K^+$  current to hypoxia (101).

A recent elegant report by Svoboda *et al.* shows that oxidative stress using the organic hydroperoxide *tert* butyl hydroperoxide (*t*BOOH) can directly result in internalization and protein degradation of Kv1.5 and that sulfenic acid modification of COOH-terminal C581 alone is sufficient to trigger these events (149). Thus, sulfenic acid modification to proteins can regulate Kv1.5 channel surface expression and stability under oxidative stress and divert channels from a recycling pathway to degradation. Redox modulation of Kv1.5 current is associated with numerous pathophysiological states that involve loss of channel protein, including PH (2). Therefore, this report might provide a novel molecular mechanism linking oxidative stress and down-regulation of channel expression observed in cardiovascular diseases. Earlier, we have reported that the same redox signal can elicit opposite effects on  $K^+$  current, resting membrane potential, cytosolic calcium, and vascular tone in resistance PSMCs and the SMCs obtained from the DA Botalli (102). These observations support the concept that redox changes could signal the opposite effects of oxygen in the PA and DA. The thiol oxidant diamide inhibits HPV (172). Schach *et al.* have shown that this pulmonary vasodilation is markedly inhibited when the transmembrane  $K^+$  driving force is reduced or vessels are constricted with high potassium, indicating that the thiol oxidation induces pulmonary vasodilation by opening  $K^+$  channels (131). The role of the Nox for the ROS-induced changes in Kv current has been recently studied by Mittal *et al.* They have shown that Kv1.5 and NOX4 are colocalized in isolated PSMC. Furthermore, the Nox inhibitor and ROS scavenger apocynin as well as NOX4 siRNA reversed the hypoxia-induced decrease in Kv current density, whereas the protein levels of the channels remain unaffected by siNOX4 treatment. Determination of cysteine oxidation revealed increased NOX4-mediated Kv1.5 channel oxidation. Their observation suggests that the decreased Kv current was a direct effect of an NOX4-derived increase in ROS (92). This finding complements the report that a normoxic increase in endogenous  $H_2O_2$  in SMCs of the DA inhibits  $K^+$  channels and causes constriction (125). However, the similar observations in PA and DA are contrary to the opposite redox effects with diamide and other redox agents described earlier.

Oxidative modification of Kv channels has been extensively investigated by Sahoo *et al.* (130). They identified four critical cysteine residues and not only revealed the major target sites of oxidative modification in potassium voltage-gated channel subfamily H member 1 (KCNH1), also known as Kv10.1, but also provided new insights into the dynamic interplay of functional channel domains under redox modu-

lation. The study provides solid evidence that the cysteine residues C145/C214 in the N-linker are responsible for fast modification of the ion channels, and the C532/C562 in the C-linker are responsible for slow modification of the ion channels. The authors hypothesize that in physiological levels of ROS, mild oxidative stress may act through a positive feedback by reducing Kv channel activity. Another recent experimental study has identified oxidative stress as a key contributor to Kv4 channel up-regulation due to chronic impairment of the Trx system (152). The results of Tang *et al.* suggest that expression of cardiac Kv channels is redox regulated. They have found that in myocytes from the ventricle after myocardial infarction, TrxR is markedly suppressed. This chronic impairment of the Trx system contributed to Kv4 up-regulation through sustained activation of ASK1-JNK-p38 signaling in a TrxR-dependent manner thus highlighting the Trx system as a novel therapeutic target.

Modification of Kv channels by pyridine nucleotides has been extensively reviewed recently by Kilfoil *et al.* (60). According to earlier reports, the Kv1 and Kv4 channels seem to interact with pyridine nucleotide-binding  $\beta$ -subunits. Binding of  $NADP^+$  to Kv $\beta$  subunit removes N-type inactivation of Kv currents, whereas NADPH stabilizes channel inactivation. PAs sense and respond to environmental changes such as hypoxia. Therefore, linking  $K^+$  transport to the metabolic state of the cell is important. In small resistance arteries, oxygen-sensitive changes in  $K^+$  channel activity mediate HPV and decreased Kv1.5 activity may result in PH (84). It has been recently reported that *in vitro* the C-terminal peptide of Kv1.5 interacts avidly with NADPH (155). Thus, the pyridine nucleotide-binding Kv $\beta$  proteins with their ability to regulate Kv current could, in principle, impart oxygen sensitivity to Kv1.5 channels. However, the findings of the studies carried out in different species and in different cell systems are contradictory. Although the differences might be explained by differences in Kv $\beta$  expression, further work is required to determine the role of the pyridine regulation of Kv channels in HPV.

The resting potential depends on a background  $K^+$  current comprising voltage-dependent and -independent components (46, 106) in PSMC. TASK-1 channels, described by Gurney *et al.* and also by our group (47, 103), appear to mediate the latter (46, 47). The biophysical and pharmacological properties of the voltage-dependent component were noted to bear a striking resemblance to the neuronal M-current (31). The channels responsible for the M-current are encoded by genes of the KCNQ (Kv7) family (127, 184). Along with the finding that KCNQ channel blockers are potent pulmonary vasoconstrictors (57a), the similarity of IKN to the M-current led the authors to consider the possibility that KCNQ channels mediate the voltage-dependent component of IKN (58). A triple cysteine pocket within neuronal M-channel subunits (Kv7.2–7.5) can be oxidatively modified by  $H_2O_2$  (37, 105) and  $O_2^{\bullet-}$  (75a), both of which cause augmentation of M-current. Here, they identified a reactive redox module within M-channels that is responsible for dynamic M-current modulation. Furthermore, emerging evidence demonstrates that protein S-nitrosylation is an important NO-mediated regulatory mechanism of various classes of proteins, including ion channels (146, 159). In a recent study of Asada *et al.*, the authors demonstrated that an NO donor induces S-

nitrosylation at Cys445 in the C terminus of the pore-forming  $\alpha$ -subunit KCNQ1. They provide convincing evidence which shows that the redox motif flanking Cys445 is required for the site-specific S-nitrosylation of Cys445. S-nitrosylation at Cys445 of the KCNQ1 channel functionally regulates the KCNQ1/potassium voltage-gated channel subfamily E member 1 (KCNE1) complex channel. Since KCNQ1 contributes to the slowly activating delayed rectifier potassium channel current, this work may provide a molecular basis of NO-mediated phenomena in smooth muscle electrophysiology (10).

The large conductance  $\text{Ca}^{2+}$ -dependent potassium channel (BKCa) plays a key role in the oxygen-sensing function of the carotid body chemoreceptors. Li *et al.* have recently reported that the  $\text{H}_2\text{S}$  donor, NaHS, plays a crucial role in mediating the response of carotid body chemoreceptors to hypoxia *via* modulating the BKCa channels (73). In these cells, the BKCa currents were inhibited by hypoxia and such inhibition was mimicked by NaHS and diminished by inhibitors of cystathionine beta-synthetase (CBS), which produces  $\text{H}_2\text{S}$  from L-cysteine. Finally, mice hyperventilated in response to hypoxia, which was prevented by the CBS inhibitors amino oxyacetic acid (AOAA) and hydroxylamine. Almost 20 years ago, in PASM and SMCs from systemic arteries, such as ear arterial smooth muscle cells (EASMC), BKCa have been reported to be redox sensitive (113). Reducing agents (DDT, GSH, and NADH) decreased PASM, but not EASMC, KCa channel activity. However, oxidizing agents (DTNB, GSSG, and NAD) increased KCa channel activity in both PASM and EASMC. The increased activity due to oxidizing agents was diminished by applying reducing agents. From these results, the authors suggest that the basal redox state of the PASM KCa channel is more oxidized than that of the EASMC channel, as the response of KCa channels of the PASM to intracellular reducing agents differs from that of the EASMC. In contrast, in isolated SMC from large conduit PAs, the KCa channel activity was unaffected by NAD and GSSG, or NADH and GSH (154). This suggests that the change in the intracellular redox state, which occurs during acute hypoxia, does not alter the activity of KCa channels in SMC from large conduit PAs. The different behavior of these channels in response to redox changes could be explained by the heterogeneity of the KCa in different tissues and may be related to the different responses of PASM and EASMC KCa channels to hypoxia Archer *et al.* (5). Furthermore, redox-dependent modulation of activity of  $\text{Na}^+ - \text{K}^+$  ATPase (65) and  $\text{Na}^+ - \text{H}^+$  (177) exchange has been reported.

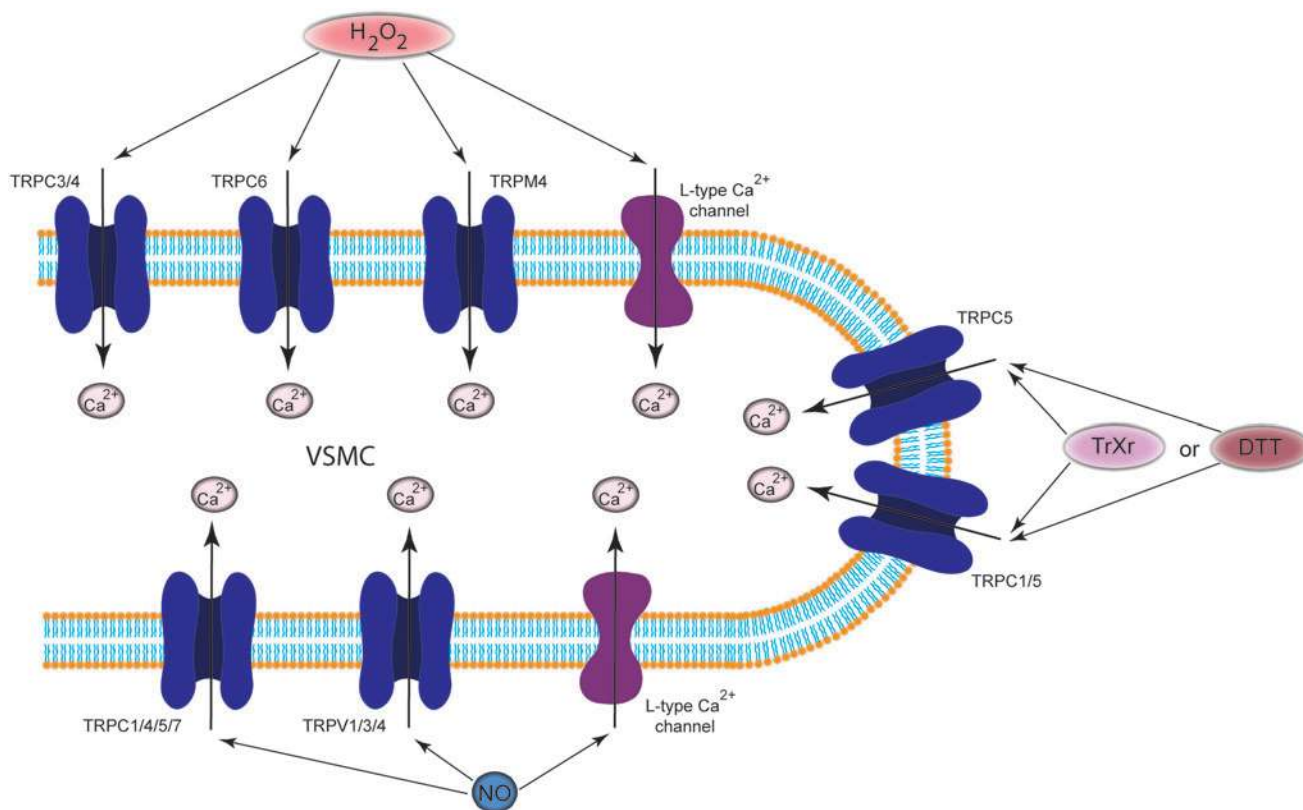
#### Calcium handling proteins

In the pulmonary circulation, the vascular tone and blood vessel diameter is determined to be due to the regulation of cytosolic/intracellular  $\text{Ca}^{2+}$ , mainly in the PASM of the resistance arteries. The steep ( $\sim 10,000$ -fold) concentration gradient between the intracellular and the extracellular  $\text{Ca}^{2+}$  concentration already indicates the importance of constant and tight control of cellular  $\text{Ca}^{2+}$  homeostasis due to a complex machinery of (i)  $\text{Ca}^{2+}$ -permeable channels, enabling  $\text{Ca}^{2+}$  to flux through the membrane based on its electrochemical gradient; (ii) the  $\text{Ca}^{2+}$  pumps (*e.g.*,  $\text{Ca}^{2+}/\text{Mg}^{2+}$  ATPase or  $\text{Ca}^{2+}$  pump) transporting  $\text{Ca}^{2+}$  against its concentration gradient; and

(iii) the  $\text{Ca}^{2+}$  exchangers (*e.g.*, NCX). The calcium-selective ion channels in the PASM and EC include (i) voltage-dependent  $\text{Ca}^{2+}$  channels (VDCC) that are opened by membrane depolarization, (ii) receptor-operated  $\text{Ca}^{2+}$  channels (ROC) which are opened by DAG when membrane receptors are activated by ligands, and (iii) store-operated  $\text{Ca}^{2+}$  channels (SOC) that are opened when  $\text{Ca}^{2+}$  in the intracellular  $\text{Ca}^{2+}$  stores (*e.g.*, SR/ER) is depleted by, for example, activation of  $\text{IP}_3\text{R}/\text{RyR}$  and inhibition of SERCA on the SR/ER membrane [for a detailed review, see also Song *et al.* (141)]. In the pulmonary circulation, the investigations have focussed on measurements of ROS, pharmacological and functional studies, and mechanisms that control  $\text{Ca}^{2+}$  handling under hypoxia without determining the exact molecular site of action of the major players (138, 141) (Fig. 8).

Oxidants have been found to regulate voltage-gated  $\text{Ca}^{2+}$  channel activity on different levels, affecting their expression, trafficking, open time, and open probability. Some of these studies were able to demonstrate that the pore-forming  $\alpha 1$ -subunit, which is rich in reactive cysteines, is the molecular target for ROS. Although almost all studies have been carried out on myocytes, the mode of action of the redox modulation can be translated into VDCC in PASM. However, the findings are contradictory. While several reports have shown that oxidation increases the activity of voltage-gated  $\text{Ca}^{2+}$  channels, others reported inhibition of channel activity by oxidizing agents [for a more detailed review, see Hidalgo and Donoso (51)]. This might be explained either by the concentrations of ROS/RNS involved or by different effects on ion transport mechanisms in different cell types. Thus, thiol oxidizing agents (*e.g.*, thimerosal) irreversibly decreased current through the human  $\alpha 1\text{C}$ -subunit, which was reversed by DTT, expressed in HEK-293 cells (91, 133). In contrast, ROS such as  $\text{H}_2\text{O}_2$  and  $\text{O}_2^{\bullet -}$  were shown to stimulate  $\text{Ca}^{2+}$  entry through L-type voltage-gated channels in VSMC (151) and in cardiomyocytes (160). Oxidative stress also plays a major role in the pathogenesis of heart failure, and this condition involves L-type  $\text{Ca}^{2+}$  channels. Zheng *et al.* have very recently shown that the redox state of  $\text{Ca}^{2+}$  channels is controlled by the thiorodoxin system which plays a key role in  $\text{Ca}^{2+}$  channel remodeling of the failing heart (187). Furthermore, NO also modulates VDCC by a direct redox-dependent stimulation. In ventricular myocytes, S-nitrosothiols (CysNO and GSNO) increased the amplitude of  $\text{Ca}^{2+}$  current as a result of S-nitrosylation of extracellular SH groups of the L-type  $\text{Ca}^{2+}$  channel, independently of the activity of kinases, phosphatases, or SR  $\text{Ca}^{2+}$  release (21, 120).

ROC and SOC provide alternative ways for  $\text{Ca}^{2+}$  influx into PAEC and/or PASM. Since TRP proteins are believed to underlie the molecular structure of many ROC entry channels and at least some SOC entry channels, it is logical to question whether the TRP proteins expressed in the pulmonary circulation are sensitive to regulation by redox. More than 10 TRP isoforms are expressed in vascular smooth muscle and EC, including TRPC1–7, TRPV1–4, TRPP2, TRPM2–4, -7, and -8. However, it needs to be noted that almost all investigations discussed next were carried out in heterologous expression systems or *in silico* modulations, which provides access for targeted studies of the channels. We will only briefly summarize the redox modulation of these channels, as several reviews recently discussed the existing data (138, 141, 163, 164).



**FIG. 8. Regulation of calcium selective ion channels by redox.** The oxidizing agent H<sub>2</sub>O<sub>2</sub> or NO directly activates calcium selective channels. In contrast, DTT or extracellular reduced Trx can increase ion current through TRPC5 homotetrameric and TRPC5/TRPC1 heterotetrameric channels. DTT, dithiothreitol; NO, nitric oxide; TRPC, transient-receptor potential cation. To see this illustration in color, the reader is referred to the web version of this article at [www.liebertpub.com/ars](http://www.liebertpub.com/ars)

Even though there are still some uncertainties as to which compounds act directly and which act indirectly to gate the TRPM2 channel, it is clear that TRPM2 is modulated by redox changes. Using NAD<sup>+</sup> and ADP-ribose, Wehage *et al.* reported activation of the cationic current in TRPM2-expressing HEK cells as the consequence of redox regulation (50, 169). We have recently detected the mechano-sensitive TRPM4 in human PAs (unpublished observation). Simon *et al.* reported that H<sub>2</sub>O<sub>2</sub> induces sustained activity of TRPM4, showing that oxidative modulation of the C-terminally located cysteine C1093 is crucial for the H<sub>2</sub>O<sub>2</sub> effect (139). The redox regulation of TRPC3/TRPC4 channels has been extensively investigated by the Groschner group. They have shown that TRPC3 proteins are the basis of the redox-activated cation conductance of PAECs, as they are activated by H<sub>2</sub>O<sub>2</sub>. They identified the TRPC3/TRPC4 complex as subunits of native endothelial cation channels that are governed by the cellular redox state (12, 119). The mechanisms of the redox activation of the complex, unfortunately, remains elusive. Groschner *et al.* have described it as an “oxidant-induced disruption of cholesterol-rich lipid rafts,” a cross-talk between TRPC channels and signaling molecules which reside in caveolae (or lipid rafts) and further speculate that membrane cholesterol oxidation might actually be the signaling molecule that activates TRPC3 (44, 119). TRPC5 homotetrameric channels and TRPC5/TRPC1 heterotetrameric channels have been reported to be activated by DTT or extracellular reduced Trx. Both

break a disulfide bond in the extracellular loop adjacent to the ion selectivity filter of TRPC5 and increase the ion conductivity of the channel (179). Similar to TRPC3 or TRPM4, TRPC6 is activated by H<sub>2</sub>O<sub>2</sub> *via* modification of thiol groups of intracellular proteins. This cysteine oxidation-dependent pathway not only stimulates the TRPC6 channel by itself but also sensitizes the channels to DAG and promotes TRPC6 trafficking to the cell surface (41). TRPC5 and 7 are regulated by cysteine S-nitrosylation by NO (182). NO or the NO donor SNAP induces Ca<sup>2+</sup> entry into cells, an effect that is partially reversed by additional application of the reducing agent DTT. In contrast to the other TRP channels, the mechanism is well described. The effect is specifically mediated by cysteine S-nitrosylation of the cytoplasmically accessible Cys553 and Cys558, to open the intracellular activation gate. The membrane-permeable thiol-reactive compound MTSEA mimicks this effect, but not the membrane-impermeable MTSET.

The signaling cascade underlying store-operated Ca<sup>2+</sup> entry spans from receptor-mediated activation of PLC with subsequent IP<sub>3</sub> production to IP<sub>3</sub>R-mediated depletion of ER Ca<sup>2+</sup> stores, which, in turn, results in a conformational change, oligomerization, and translocation of stromal interaction molecule 1 (STIM1) to plasma membrane near regions of the ER, where STIM1 activates calcium release-activated calcium channel (Orai) through a direct interaction with its C-terminal region (13). The molecular identity of store-

operated  $\text{Ca}^{2+}$  influx was described first in 2006: isoforms of Orai (1, 2, and 3), as essential pore-forming units and the  $\text{Ca}^{2+}$ -sensing ER-proteins STIM1 and STIM2 (186). In addition, TRPC1 and TRPC3 have been reported to participate in the STIM-mediated  $\text{Ca}^{2+}$  entry pathway. STIM1 proteins possess several cysteine residues that could be targets for modification. Similarly, all three Orai isoforms possess predicted extracellular and intracellular cysteines. For a detailed review of the redox modulation of SOC, see Bogeski *et al.* (13). Here, we focus only on recent studies reporting modification of the newly discovered components of the SOC pathway (STIM and Orai) by redox. Recently, using electrophysiology,  $\text{Ca}^{2+}$  imaging, and site-directed mutagenesis, Bogeski *et al.* have found that Orai1 is inhibited by preincubation with  $\text{H}_2\text{O}_2$  and that cysteines 195, 126, and 143 contribute to redox sensitivity (14). Hawkins *et al.* studied redox-mediated activation of STIM1 and found that oxidative stress results in glutathionylation of STIM1's cysteine 56, triggering STIM1 oligomerization, and, thus, they were able to activate Orai channels and induce  $\text{Ca}^{2+}$  entry (49). In contrast, Grupe *et al.* have shown that  $\text{H}_2\text{O}_2$  directly activates  $\text{Ca}^{2+}$  entry in an STIM-dependent manner (45). Thus, the limited number of these studies and the potential discrepancies in the recent findings clearly indicate the need for further detailed investigations of these complex signaling events. Activation of  $\text{IP}_3$  receptors and RyRs enables  $\text{Ca}^{2+}$  release from the SR/ER to the cytosol, thus resulting in an increase in intracellular  $\text{Ca}^{2+}$  concentration and vasoconstriction in myocytes. In bovine and human aortic ECs, glutathionylation by a chemical oxidant, diamide, which selectively converts reduced glutathione (GSH) to its disulfide (GSSG), dramatically increased both the rate and magnitude of the thapsigargin-induced  $\text{Ca}^{2+}$  transient. These findings suggest that CICR *via* the  $\text{IP}_3\text{R}$  is enhanced by the formation of protein–glutathione (P-SGG) mixed disulfide, that is, glutathionylation. Similar to diamide,  $\text{H}_2\text{O}_2$  increased the sensitivity of HAECs to both histamine and thapsigargin. The biochemical studies have shown that glutathionylation of native  $\text{IP}_3\text{R1}$  is increased in cells challenged with  $\text{H}_2\text{O}_2$ , indicating that thiol-oxidizing agents primarily increased the sensitivity of the  $\text{IP}_3\text{R}$  to  $\text{Ca}^{2+}$  (78). Through ATP hydrolysis, SERCA and plasma membrane calcium (PMCA) pump actively clear  $\text{Ca}^{2+}$  from the cytoplasm and, thus, play a key role by maintaining cytoplasmic  $\text{Ca}^{2+}$  homeostasis. The different SERCA isoforms contain between 22 and 28 cysteine residues, and, therefore, provide a target for redox modification. According to the data available so far, only one or two of them are essential (97). SERCA inhibition *in vitro* through modification of sulfhydryl groups by either ROS or RNS has been reported in several cell types, mainly in coronary EC and in cardiomyocytes (51). Finally, the PMCA pump has also been reported to be reversibly inhibited by  $\text{H}_2\text{O}_2$ ,  $\text{O}_2^{\bullet-}$ ,  $\bullet\text{OH}$ , and ONOO $^-$ /ONOOH (51). It is very likely that residues Tyr589, Met622, and Met831 are the redox targets (82).

## Conclusion

The pulmonary circulation is a target for a number of redox-active signaling factors, both circulating and locally produced. Under physiological circumstances, the concerted action of vasodilators and vasoconstrictors maintains the physiological structure and relaxed tone of the PAs. Since

redox changes trigger signaling pathways to ion channels that may result in changes in ion fluxes, contraction, cell proliferation, and perhaps to vascular remodeling, to elucidate the molecular mechanisms of changes in ion channel conductance and the identification of the sites of action is essential. In the past decade, significant advancement in the understanding of protein thiol modification by pro- and antioxidants has been made. Further investigation of the interaction of redox status and ion channel gating, especially the significance of S-glutathionylation, S-nitrosylation, and protein kinase-mediated phosphorylation, will result in a better understanding of the physiological and pathophysiological importance of these mediators in general. Thus, the implications of such modifications in cellular functions and related diseases will guide our endeavor in further altering the ion channel for therapeutic purposes.

## References

1. Albarwani S, Robertson BE, Nye PC, and Kozlowski RZ. Biophysical properties of  $\text{Ca}^{2+}$ - and Mg-ATP-activated  $\text{K}^+$  channels in pulmonary arterial smooth muscle cells isolated from the rat. *Pflügers Arch* 428: 446–454, 1994.
2. Archer SL, Gomberg-Maitland M, Maitland ML, Rich S, GarciafigureJG, and Weir EK. Mitochondrial metabolism, redox signaling, and fusion: a mitochondria-ROS-HIF-1  $\alpha$ -Kv1.5  $\text{O}_2$ -sensing pathway at the intersection of pulmonary hypertension and cancer. *Am J Physiol Heart Circ Physiol* 294: H570–H578, 2008.
3. This reference has been deleted.
4. Archer SL, Huang J, Henry T, Peterson D, and Weir EK. A redox-based  $\text{O}_2$  sensor in rat pulmonary vasculature. *Circ Res* 73: 1100–1112, 1993.
5. Archer SL, Huang JM, Reeve HL, Hampl V, Tolarova S, Michelakis E, and Weir EK. Differential distribution of electrophysiologically distinct myocytes in conduit and resistance arteries determines their response to nitric oxide and hypoxia. *Circ Res* 78: 431–442, 1996.
6. Archer SL, Nelson DP, and Weir EK. Detection of activated  $\text{O}_2$  species *in vitro* and in rat lungs by chemiluminescence. *J Appl Physiol* 67: 1912–1921, 1989.
7. Archer SL, Souil E, Dinh-Xuan AT, Schremmer B, Mercier JC, El Yaagoubi A, Nguyen-Huu L, Reeve HL, and Hampl V. Molecular identification of the role of voltage-gated  $\text{K}^+$  channels, Kv1.5 and Kv2.1, in hypoxic pulmonary vasoconstriction and control of resting membrane potential in rat pulmonary artery myocytes. *J Clin Invest* 101: 2319–2330, 1998.
8. Archer SL, Tolins JP, Raj L, and Weir EK. Hypoxic pulmonary vasoconstriction is enhanced by inhibition of the synthesis of an endothelium derived relaxing factor. *Biochem Biophys Res Commun* 164: 1198–1205, 1989.
9. Archer SL, Will JA, and Weir EK. Redox status in the control of pulmonary vascular tone. *Herz* 11: 127–141, 1986.
10. Asada K, Kurokawa J, and Furukawa T. Redox- and calmodulin-dependent S-nitrosylation of the KCNQ1 channel. *J Biol Chem* 284: 6014–6020, 2009.
11. Audi SH, Bongard RD, Dawson CA, Siegel D, Roerig DL, and Merker MP. Duroquinone reduction during passage through the pulmonary circulation. *Am J Physiol Lung Cell Mol Physiol* 285: L1116–L1131, 2003.
12. Balzer M, Lintschinger B, and Groschner K. Evidence for a role of Trp proteins in the oxidative stress-induced membrane conductances of porcine aortic endothelial cells. *Cardiovasc Res* 42: 543–549, 1999.

13. Bogeski I, Kappel R, Kummerow C, Gulaboski R, Hoth M, and Niemeyer BA. Redox regulation of calcium ion channels: chemical and physiological aspects. *Cell Calcium* 50: 407–423, 2011.
14. Bogeski I, Kummerow C, Al-Ansary D, Schwarz EC, Koehler R, Kozai D, Takahashi N, Peinelt C, Griesemer D, Bozem M, Mori Y, Hoth M, and Niemeyer BA. Differential redox regulation of ORAI ion channels: a mechanism to tune cellular calcium signaling. *Sci Signal* 3: ra24, 2010.
15. Bongard RD, Krenz GS, Gastonguay AJ, Williams CL, Lindemer BJ, and Merker MP. Characterization of the threshold for NAD(P)H: quinone oxidoreductase activity in intact sulforaphane-treated pulmonary arterial endothelial cells. *Free Radic Biol Med* 50: 953–962, 2011.
16. Bongard RD, Lindemer BJ, Krenz GS, and Merker MP. Preferential utilization of NADPH as the endogenous electron donor for NAD(P)H: quinone oxidoreductase 1 (NQO1) in intact pulmonary arterial endothelial cells. *Free Radic Biol Med* 46: 25–32, 2009.
17. This reference has been deleted.
18. Bongard RD, Myers CR, Lindemer BJ, Baumgardt S, Gonzalez FJ, and Merker MP. Coenzyme Q(1) as a probe for mitochondrial complex I activity in the intact perfused hyperoxia-exposed wild-type and Nqo1-null mouse lung. *Am J Physiol Lung Cell Mol Physiol* 302: L949–L958, 2012.
19. Bonnet S, Michelakakis ED, Porter CJ, Andrade-Navarro MA, Thebaud B, Bonnet S, Haromy A, Harry G, Moudgil R, McMurtry MS, Weir EK, and Archer SL. An abnormal mitochondrial-hypoxia inducible factor-1 $\alpha$ -Kv channel pathway disrupts oxygen sensing and triggers pulmonary arterial hypertension in fawn hooded rats: similarities to human pulmonary arterial hypertension. *Circulation* 113: 2630–2641, 2006.
20. Bradford JR and Dean HP. The pulmonary circulation. *J Physiol* 16: 34–96, 1894.
21. Campbell DL, Stamler JS, and Strauss HC. Redox modulation of L-type calcium channels in ferret ventricular myocytes. Dual mechanism regulation by nitric oxide and S-nitrosothiols. *J Gen Physiol* 108: 277–293, 1996.
22. Chen B, Nelin VE, Locy ML, Jin Y, and Tipple TE. Thioredoxin-1 mediates hypoxia-induced pulmonary artery smooth muscle cell proliferation. *Am J Physiol Lung Cell Mol Physiol* 305: L389–L395, 2013.
23. Chen CA, Wang TY, Varadharaj S, Reyes LA, Hemann C, Talukder MA, Chen YR, Druhan LJ, and Zweier JL. S-glutathionylation uncouples eNOS and regulates its cellular and vascular function. *Nature* 468: 1115–1118, 2010.
24. Coggins MP and Bloch KD. Nitric oxide in the pulmonary vasculature. *Arterioscler Thromb Vasc Biol* 27: 1877–1885, 2007.
25. Crane FL, Sun IL, Clark MG, Grebing C, and Low H. Transplasma-membrane redox systems in growth and development. *Biochim Biophys Acta* 811: 233–264, 1985.
26. Day RM, Suzuki YJ, Lum JM, White AC, and Fanburg BL. Bleomycin upregulates expression of gamma-glutamylcysteine synthetase in pulmonary artery endothelial cells. *Am J Physiol Lung Cell Mol Physiol* 282: L1349–L1357, 2002.
27. Del PD, Avigliano L, Savini I, and Catani MV. Transplasma membrane electron transport in mammals: functional significance in health and disease. *Antioxid Redox Signal* 14: 2289–2318, 2011.
28. Dromparis P, Sutendra G, and Michelakakis ED. The role of mitochondria in pulmonary vascular remodeling. *J Mol Med (Berl)* 88: 1003–1010, 2010.
29. Drose S and Brandt U. Molecular mechanisms of superoxide production by the mitochondrial respiratory chain. *Adv Exp Med Biol* 748: 145–169, 2012.
30. Euler v US and Liljestrand G. Observations on the pulmonary arterial blood pressure in the cat. *Acta Physiol Scand* 12: 301–320, 1946.
31. Evans AM, Osipenko ON, and Gurney AM. Properties of a novel K<sup>+</sup> current that is active at resting potential in rabbit pulmonary artery smooth muscle cells. *J Physiol* 496: 407–420, 1996.
32. Fagan KA, Fouty BW, Tyler RC, Morris KG, Jr., Hepler LK, Sato K, LeCras TD, Abman SH, Weinberger HD, Huang PL, McMurtry IF, and Rodman DM. The pulmonary circulation of homozygous or heterozygous eNOS-null mice is hyperresponsive to mild hypoxia. *J Clin Invest* 103: 291–299, 1999.
33. Fagan KA, Tyler RC, Sato K, Fouty BW, Morris KG Jr., Huang PL, McMurtry IF, and Rodman DM. Relative contributions of endothelial, inducible, and neuronal NOS to tone in the murine pulmonary circulation. *Am J Physiol* 277: L472–L478, 1999.
34. Fernandes AP and Holmgren A. Glutaredoxins: glutathione-dependent redox enzymes with functions far beyond a simple thioredoxin backup system. *Antioxid Redox Signal* 6: 63–74, 2004.
35. Firth AL, Gordienko DV, Yuill KH, and Smirnov SV. Cellular localization of mitochondria contributes to Kv channel-mediated regulation of cellular excitability in pulmonary but not mesenteric circulation. *Am J Physiol Lung Cell Mol Physiol* 296: L347–L360, 2009.
36. Forstermann U. Nitric oxide and oxidative stress in vascular disease. *Pflügers Arch* 459: 923–939, 2010.
37. Gamper N, Zaika O, Li Y, Martin P, Hernandez CC, Perez MR, Wang AY, Jaffe DB, and Shapiro MS. Oxidative modification of M-type K(+) channels as a mechanism of cytoprotective neuronal silencing. *EMBO J* 25: 4996–5004, 2006.
38. Ghofrani HA, Morrell NW, Hoepfer MM, Olschewski H, Peacock AJ, Barst RJ, Shapiro S, Golpon H, Toshner M, Grimminger F, and Pascoe S. Imatinib in pulmonary arterial hypertension patients with inadequate response to established therapy. *Am J Respir Crit Care Med* 182: 1171–1177, 2010.
39. Gomez R, Nunez L, Vaquero M, Amoros I, Barana A, de PT, Macaya C, Maroto L, Rodriguez E, Caballero R, Lopez-Farre A, Tamargo J, and Delpon E. Nitric oxide inhibits Kv4.3 and human cardiac transient outward potassium current (Ito1). *Cardiovasc Res* 80: 375–384, 2008.
40. Gonzalez DR, Beigi F, Treuer AV, and Hare JM. Deficient ryanodine receptor S-nitrosylation increases sarcoplasmic reticulum calcium leak and arrhythmogenesis in cardiomyocytes. *Proc Natl Acad Sci U S A* 104: 20612–20617, 2007.
41. Graham S, Ding M, Ding Y, Sours-Brothers S, Luchowski R, Gryczynski Z, Yorio T, Ma H, and Ma R. Canonical transient receptor potential 6 (TRPC6), a redox-regulated cation channel. *J Biol Chem* 285: 23466–23476, 2010.
42. Grebing C, Crane FL, Low H, and Hall K. A transmembranous NADH-dehydrogenase in human erythrocyte membranes. *J Bioenerg Biomembr* 16: 517–533, 1984.

43. Griffith OW. Biologic and pharmacologic regulation of mammalian glutathione synthesis. *Free Radic Biol Med* 27: 922–935, 1999.
44. Groschner K, Rosker C, and Lukas M. Role of TRP channels in oxidative stress. *Novartis Found Symp* 258: 222–230, 2004.
45. Grupe M, Myers G, Penner R, and Fleig A. Activation of store-operated I(CRAC) by hydrogen peroxide. *Cell Calcium* 48: 1–9, 2010.
46. Gurney AM and Joshi S. The role of twin pore domain and other K<sup>+</sup> channels in hypoxic pulmonary vasoconstriction. *Novartis Found Symp* 272: 218–228, 2006.
47. Gurney AM, Osipenko ON, MacMillan D, MacFarlane KM, Tate RJ, and Kempson FE. Two-pore domain K channel, TASK-1, in pulmonary artery smooth muscle cells. *Circ Res* 93: 957–964, 2003.
48. Haldar SM and Stamler JS. S-nitrosylation: integrator of cardiovascular performance and oxygen delivery. *J Clin Invest* 123: 101–110, 2013.
49. Hawkins BJ, Irrinki KM, Mallilankaraman K, Lien YC, Wang Y, Bhanumathy CD, Subbiah R, Ritchie MF, Soboloff J, Baba Y, Kurosaki T, Joseph SK, Gill DL, and Madesh M. S-glutathionylation activates STIM1 and alters mitochondrial homeostasis. *J Cell Biol* 190: 391–405, 2010.
50. Heiner I, Eisfeld J, Halaszovich CR, Wehage E, Jungling E, Zitt C, and Luckhoff A. Expression profile of the transient receptor potential (TRP) family in neutrophil granulocytes: evidence for currents through long TRP channel 2 induced by ADP-ribose and NAD. *Biochem J* 371(Pt 3): 1045–1053, 2003.
51. Hidalgo C and Donoso P. Crosstalk between calcium and redox signaling: from molecular mechanisms to health implications. *Antioxid Redox Signal* 10: 1275–1312, 2008.
52. Hille B. *Potassium Channels and Chloride Channels*. *Ion Channels of Excitable Membranes*. Sunderland: Sinauer Associates, Inc., 2001, pp. 131–167.
53. Hori M and Nishida K. Oxidative stress and left ventricular remodeling after myocardial infarction. *Cardiovasc Res* 81: 457–464, 2009.
54. Hu HL, Zhang ZX, Chen CS, Cai C, Zhao JP, and Wang X. Effects of mitochondrial potassium channel and membrane potential on hypoxic human pulmonary artery smooth muscle cells. *Am J Respir Cell Mol Biol* 42: 661–666, 2010.
55. Hu XQ and Zhang L. Function and regulation of large conductance Ca(2<sup>+</sup>)-activated K<sup>+</sup> channel in vascular smooth muscle cells. *Drug Discov Today* 17: 974–987, 2012.
56. Jernigan NL, Broughton BR, Walker BR, and Resta TC. Impaired NO-dependent inhibition of store- and receptor-operated calcium entry in pulmonary vascular smooth muscle after chronic hypoxia. *Am J Physiol Lung Cell Mol Physiol* 290: L517–L525, 2006.
57. Jernigan NL, Walker BR, and Resta TC. Reactive oxygen species mediate RhoA/Rho kinase-induced Ca<sup>2+</sup> sensitization in pulmonary vascular smooth muscle following chronic hypoxia. *Am J Physiol Lung Cell Mol Physiol* 295: L515–L529, 2008.
- 57a. Joshi S, Balan P, Gurney AM. Pulmonary vasoconstrictor action of KCNQ potassium channel blockers. *Respir Res* 7:31, 2006.
58. Joshi S, Sedivy V, Hodyc D, Herget J, and Gurney AM. KCNQ modulators reveal a key role for KCNQ potassium channels in regulating the tone of rat pulmonary artery smooth muscle. *J Pharmacol Exp Ther* 329: 368–376, 2009.
59. Kilberg MS and Christensen HN. Electron-transferring enzymes in the plasma membrane of the Ehrlich ascites tumor cell. *Biochemistry* 18: 1525–1530, 1979.
60. Kilfoil PJ, Tipparaju SM, Barski OA, and Bhatnagar A. Regulation of ion channels by pyridine nucleotides. *Circ Res* 112: 721–741, 2013.
61. Killilea DW, Hester R, Balczon R, Babal P, and Gillespie MN. Free radical production in hypoxic pulmonary artery smooth muscle cells. *Am J Physiol* 279: L408–L412, 2000.
62. Knock GA and Ward JP. Redox regulation of protein kinases as a modulator of vascular function. *Antioxid Redox Signal* 15: 1531–1547, 2011.
63. Kolisek M, Beck A, Fleig A, and Penner R. Cyclic ADP-ribose and hydrogen peroxide synergize with ADP-ribose in the activation of TRPM2 channels. *Mol Cell* 18: 61–69, 2005.
64. Kuhr FK, Smith KA, Song MY, Levitan I, and Yuan JX. New mechanisms of pulmonary arterial hypertension: role of Ca(2<sup>+</sup>) signaling. *Am J Physiol Heart Circ Physiol* 302: H1546–H1562, 2012.
65. Kukreja RC, Weaver AB, and Hess ML. Sarcolemmal Na(+)-K(+)-ATPase: inactivation by neutrophil-derived free radicals and oxidants. *Am J Physiol* 259(Pt 2): H1330–H1336, 1990.
66. Kwapiszewska G, Markart P, Dahal BK, Kojonazarov B, Marsh LM, Schermuly RT, Taube C, Meinhardt A, Ghofrani HA, Steinhoff M, Seeger W, Preissner KT, Olschewski A, Weissmann N, and Wygrecka M. PAR-2 inhibition reverses experimental pulmonary hypertension. *Circ Res* 110: 1179–1191, 2012.
67. Lassegue B and Griendling KK. NADPH oxidases: functions and pathologies in the vasculature. *Arterioscler Thromb Vasc Biol* 30: 653–661, 2010.
68. Lassegue B, San MA, and Griendling KK. Biochemistry, physiology, and pathophysiology of NADPH oxidases in the cardiovascular system. *Circ Res* 110: 1364–1390, 2012.
69. Le Cras TD and McMurtry IF. Nitric oxide production in the hypoxic lung. *Am J Physiol Lung Cell Mol Physiol* 280: L575–L582, 2001.
70. Le Cras TD, Tyler RC, Horan MP, Morris KG, Tudor RM, McMurtry IF, Johns RA, and Abman SH. Effects of chronic hypoxia and altered hemodynamics on endothelial nitric oxide synthase expression in the adult rat lung. *J Clin Invest* 101: 795–801, 1998.
71. Lee YM, Kim BJ, Chun YS, So I, Choi H, Kim MS, and Park JW. NOX4 as an oxygen sensor to regulate TASK-1 activity. *Cell Signal* 18: 499–507, 2006.
72. Lemos VS, Poburko D, Liao CH, Cole WC, and van BC. Na<sup>+</sup> entry via TRPC6 causes Ca<sup>2+</sup> entry via NCX reversal in ATP stimulated smooth muscle cells. *Biochem Biophys Res Commun* 352: 130–134, 2007.
73. Li Q, Sun B, Wang X, Jin Z, Zhou Y, Dong L, Jiang LH, and Rong W. A crucial role for hydrogen sulfide in oxygen sensing via modulating large conductance calcium-activated potassium channels. *Antioxid Redox Signal* 12: 1179–1189, 2010.
74. Lima B, Forrester MT, Hess DT, and Stamler JS. S-nitrosylation in cardiovascular signaling. *Circ Res* 106: 633–646, 2010.



75. Lin SJ and Guarente L. Nicotinamide adenine dinucleotide, a metabolic regulator of transcription, longevity and disease. *Curr Opin Cell Biol* 15: 241–246, 2003.
- 75a. Linley JE, Pettinger L, Huang D, Gamper N. M channel enhancers and physiological M channel block. *J Physiol* 590:793–807, 2012.
76. Liu JQ, Sham JS, Shimoda LA, Kuppusamy P, and Sylvester JT. Hypoxic constriction and reactive oxygen species in porcine distal pulmonary arteries. *Am J Physiol Lung Cell Mol Physiol* 285: L322–L333, 2003.
77. Liu SQ, Jin H, Zacarias A, Srivastava S, and Bhatnagar A. Binding of pyridine nucleotide coenzymes to the beta-subunit of the voltage-sensitive K<sup>+</sup> channel. *J Biol Chem* 276: 11812–11820, 2001.
78. Lock JT, Sinkins WG, and Schilling WP. Protein S-glutathionylation enhances Ca<sup>2+</sup>-induced Ca<sup>2+</sup> release via the IP<sub>3</sub> receptor in cultured aortic endothelial cells. *J Physiol* 590(Pt 15): 3431–3447, 2012.
79. This reference has been deleted.
80. Lu W, Wang J, Peng G, Shimoda LA, and Sylvester JT. Knockdown of stromal interaction molecule 1 attenuates store-operated Ca<sup>2+</sup> entry and Ca<sup>2+</sup> responses to acute hypoxia in pulmonary arterial smooth muscle. *Am J Physiol Lung Cell Mol Physiol* 297: L17–L25, 2009.
81. Lu W, Wang J, Shimoda LA, and Sylvester JT. Differences in STIM1 and TRPC expression in proximal and distal pulmonary arterial smooth muscle are associated with differences in Ca<sup>2+</sup> responses to hypoxia. *Am J Physiol Lung Cell Mol Physiol* 295: L104–L113, 2008.
82. Lushington GH, Zaidi A, and Michaelis ML. Theoretically predicted structures of plasma membrane Ca(2+)-ATPase and their susceptibilities to oxidation. *J Mol Graph Model* 24: 175–185, 2005.
83. Ly JD and Lawen A. Transplasma membrane electron transport: enzymes involved and biological function. *Redox Rep* 8: 3–21, 2003.
84. Mandegar M and Yuan JX. Role of K<sup>+</sup> channels in pulmonary hypertension. *Vascul Pharmacol* 38: 25–33, 2002.
85. Marshall C, Marmar AJ, Verhoeven AJ, and Marshall BE. Pulmonary artery NADPH-oxidase is activated in hypoxic pulmonary vasoconstriction. *Am J Respir Cell Mol Biol* 15: 633–644, 1996.
86. McMurtry IF, Davidson AB, Reeves JT, and Grover RF. Inhibition of hypoxic pulmonary vasoconstriction by calcium antagonists in isolated rat lungs. *Circ Res* 38: 99–104, 1976.
87. Mehdi MZ, Pandey NR, Pandey SK, and Srivastava AK. H<sub>2</sub>O<sub>2</sub>-induced phosphorylation of ERK1/2 and PKB requires tyrosine kinase activity of insulin receptor and c-Src. *Antioxid Redox Signal* 7: 1014–1020, 2005.
88. Mehta JP, Campian JL, Guardiola J, Cabrera JA, Weir EK, and Eaton JW. Generation of oxidants by hypoxic human pulmonary and coronary smooth-muscle cells. *Chest* 133: 1410–1414, 2008.
89. Michelakis ED, Hampl V, Nsair A, Wu X, Harry G, Haromy A, Gurtu R, and Archer SL. Diversity in mitochondrial function explains differences in vascular oxygen sensing. *Circ Res* 90: 1307–1315, 2002.
90. Michelakis ED, Rebeyka I, Wu XC, Nsair A, Thébaud B, Hashimoto K, Dyck JRB, Haromy A, Harry G, Barr A, and Archer SL. O<sub>2</sub> sensing in the human ductus arteriosus: regulation of voltage-gated K<sup>+</sup> channels in smooth muscle cells by a mitochondrial redox sensor. *Circ Res* 91: 478–486, 2002.
91. Mikami A, Imoto K, Tanabe T, Niidome T, Mori Y, Takeshima H, Narumiya S, and Numa S. Primary structure and functional expression of the cardiac dihydropyridine-sensitive calcium channel. *Nature* 340: 230–233, 1989.
92. Mittal M, Gu XQ, Pak O, Pamerter ME, Haag D, Fuchs DB, Schermuly RT, Ghofrani HA, Brandes RP, Seeger W, Grimminger F, Haddad GG, and Weissmann N. Hypoxia induces Kv channel current inhibition by increased NADPH oxidase-derived reactive oxygen species. *Free Radic Biol Med* 52: 1033–1042, 2012.
93. Mohazzab KM and Wolin MS. Properties of a superoxide anion-generating microsomal NADH oxidoreductase, a potential pulmonary artery PO<sub>2</sub> sensor. *Am J Physiol* 267: L823–L831, 1994.
94. Morio Y and McMurtry IF. Ca<sup>2+</sup> release from ryanodine-sensitive store contributes to mechanism of hypoxic vasoconstriction in rat lungs. *J Appl Physiol* 92: 527–534, 2002.
95. Moudgil R, Michelakis ED, and Archer SL. Hypoxic pulmonary vasoconstriction. *J Appl Physiol* 98: 390–403, 2005.
96. Moudgil R, Michelakis ED, and Archer SL. The role of K<sup>+</sup> channels in determining pulmonary vascular tone, oxygen sensing, cell proliferation, and apoptosis: implications in hypoxic pulmonary vasoconstriction and pulmonary arterial hypertension. *Microcirculation* 13: 615–632, 2006.
97. Murphy AJ. Sulfhydryl group modification of sarcoplasmic reticulum membranes. *Biochemistry* 15: 4492–4496, 1976.
- 97a. Nagaraj C, Tang B, Bálint Z, Wygrecka M, Hrenjak A, Kwapiszewska G, Stacher E, Lindenmann J, Weir EK, Olschewski H, Olschewski A. Src tyrosine kinase is crucial for potassium channel function in human pulmonary arteries. *Eur Respir J* 41:85–95, 2013.
98. Nakashima I, Kato M, Akhand AA, Suzuki H, Takeda K, Hossain K, and Kawamoto Y. Redox-linked signal transduction pathways for protein tyrosine kinase activation. *Antioxid Redox Signal* 4: 517–531, 2002.
99. Nelson MT and Quayle JM. Physiological roles and properties of potassium channels in arterial smooth muscle. *Am J Physiol* 268: C799–C822, 1995.
100. Nunez L, Vaquero M, Gomez R, Caballero R, Mateos-Caceres P, Macaya C, Iriepa I, Galvez E, Lopez-Farre A, Tamargo J, and Delpón E. Nitric oxide blocks hKv1.5 channels by S-nitrosylation and by a cyclic GMP-dependent mechanism. *Cardiovasc Res* 72: 80–89, 2006.
101. Olschewski A, Hong Z, Nelson DP, and Weir EK. Graded response of K<sup>+</sup> current, membrane potential, and [Ca<sup>2+</sup>]<sub>i</sub> to hypoxia in pulmonary arterial smooth muscle. *Am J Physiol Lung Cell Mol Physiol* 283: L1143–L1150, 2002.
102. Olschewski A, Hong Z, Peterson DA, Nelson DP, Porter VA, and Weir EK. Opposite effects of redox status on membrane potential, cytosolic calcium, and tone in pulmonary arteries and ductus arteriosus. *Am J Physiol Lung Cell Mol Physiol* 286: L15–L22, 2004.
103. Olschewski A, Li Y, Tang B, Hanze J, Eul B, Bohle RM, Wilhelm J, Morty RE, Brau ME, Weir EK, Kwapiszewska G, Klepetko W, Seeger W, and Olschewski H. Impact of TASK-1 in human pulmonary artery smooth muscle cells. *Circ Res* 98: 1072–1080, 2006.
104. Olschewski A and Weir EK. Hypoxic pulmonary vasoconstriction and hypertension. In: *Pulmonary Circulation:*

- Diseases and Their Treatment*, edited by Peacock AJ and Rubin LJ. London: Arnold, 2004, pp. 33–44.
105. Ooi L, Gigout S, Pettinger L, and Gamper N. Triple cysteine module within M-type K<sup>+</sup> channels mediates reciprocal channel modulation by nitric oxide and reactive oxygen species. *J Neurosci* 33: 6041–6046, 2013.
  106. Osipenko ON, Evans AM, and Gurney AM. Regulation of the resting potential of rabbit pulmonary artery myocytes by a low threshold, O<sub>2</sub>-sensing potassium current. *Br J Pharmacol* 120: 1461–1470, 1997.
  107. Paddenberg R, Goldenberg A, Faulhammer P, Braun-Dullaeus RC, and Kummer W. Mitochondrial complex II is essential for hypoxia-induced ROS generation and vasoconstriction in the pulmonary vasculature. *Adv Exp Med Biol* 536: 163–169, 2003.
  108. Paky A, Michael JR, Burke-Wolin TM, Wolin MS, and Gurtner GH. Endogenous production of superoxide by rabbit lungs: effects of hypoxia or metabolic inhibitors. *J Appl Physiol* 74: 2868–2874, 1993.
  109. Palace V, Kumar D, Hill MF, Khaper N, and Singal PK. Regional differences in non-enzymatic antioxidants in the heart under control and oxidative stress conditions. *J Mol Cell Cardiol* 31: 193–202, 1999.
  110. Pan Y, Weng J, Cao Y, Bhosle RC, and Zhou M. Functional coupling between the Kv1.1 channel and aldo-ketoreductase Kvbeta1. *J Biol Chem* 283: 8634–8642, 2008.
  111. Pan Y, Weng J, Levin EJ, and Zhou M. Oxidation of NADPH on Kvbeta1 inhibits ball-and-chain type inactivation by restraining the chain. *Proc Natl Acad Sci U S A* 108: 5885–5890, 2011.
  112. Park JW, Chun YS, Kim MS, Park YC, Kwak SJ, and Park SC. Metabolic modulation of cellular redox potential can improve cardiac recovery from ischemia-reperfusion injury. *Int J Cardiol* 65: 139–147, 1998.
  113. Park MK, Lee SH, Lee SJ, Ho WK, and Earm YE. Different modulation of Ca-activated K channels by the intracellular redox potential in pulmonary and ear arterial smooth muscle cells of the rabbit. *Pflügers Arch* 430: 308–314, 1995.
  114. Peng W, Hoidal JR, and Farrukh IS. Role of a novel KCa opener in regulating K<sup>+</sup> channels of hypoxic human pulmonary vascular cells. *Am J Respir Cell Mol Biol* 20: 737–745, 1999.
  115. Perez-Vizcaino F, Cogolludo A, and Moreno L. Reactive oxygen species signaling in pulmonary vascular smooth muscle. *Respir Physiol Neurobiol* 174: 212–220, 2010.
  116. Pongs O. Molecular biology of voltage-dependent potassium channels. *Physiol Rev* 72: S69–S88, 1992.
  117. Post JM, Gelband CH, and Hume JR. [Ca<sup>2+</sup>]<sub>i</sub>; inhibition of K<sup>+</sup> channels in canine pulmonary artery. Novel mechanism for hypoxia-induced membrane depolarization. *Circ Res* 77: 131–139, 1995.
  118. Post JM, Hume JR, Archer SL, and Weir EK. Direct role for potassium channel inhibition in hypoxic pulmonary vasoconstriction. *Am J Physiol* 262: C882–C890, 1992.
  119. Poteser M, Graziani A, Rosker C, Eder P, Derler I, Kahr H, Zhu MX, Romanin C, and Groschner K. TRPC3 and TRPC4 associate to form a redox-sensitive cation channel. Evidence for expression of native TRPC3-TRPC4 heteromeric channels in endothelial cells. *J Biol Chem* 281: 13588–13595, 2006.
  120. Poteser M, Romanin C, Schreibmayer W, Mayer B, and Groschner K. S-nitrosation controls gating and conductance of the alpha 1 subunit of class C L-type Ca(2+) channels. *J Biol Chem* 276: 14797–14803, 2001.
  121. Quinlan TR, Li D, Laubach VE, Shesely EG, Zhou N, and Johns RA. eNOS-deficient mice show reduced pulmonary vascular proliferation and remodeling to chronic hypoxia. *Am J Physiol Lung Cell Mol Physiol* 279: L641–L650, 2000.
  122. Rathore R, Zheng YM, Li XQ, Wang QS, Liu QH, Ginnan R, Singer HA, Ho YS, and Wang YX. Mitochondrial ROS-PKCepsilon signaling axis is uniquely involved in hypoxic increase in [Ca<sup>2+</sup>]<sub>i</sub> in pulmonary artery smooth muscle cells. *Biochem Biophys Res Commun* 351: 784–790, 2006.
  123. Rathore R, Zheng YM, Niu CF, Liu QH, Korde A, Ho YS, and Wang YX. Hypoxia activates NADPH oxidase to increase [ROS]<sub>i</sub> and [Ca<sup>2+</sup>]<sub>i</sub> through the mitochondrial ROS-PKCepsilon signaling axis in pulmonary artery smooth muscle cells. *Free Radic Biol Med* 45: 1223–1231, 2008.
  124. Ray PD, Huang BW, and Tsuji Y. Reactive oxygen species (ROS) homeostasis and redox regulation in cellular signaling. *Cell Signal* 24: 981–990, 2012.
  125. Reeve HL, Tolarova S, Nelson DP, Archer S, and Weir EK. Redox control of oxygen sensing in the rabbit ductus arteriosus. *J Physiol* 533: 253–261, 2001.
  126. Reeve HL, Weir EK, Nelson DP, Peterson DA, and Archer SL. Opposing effects of oxidants and antioxidants on K<sup>+</sup> channel activity and tone in rat vascular tissue. *Exp Physiol* 80: 825–834, 1995.
  127. Robbins J. KCNQ potassium channels: physiology, pathophysiology, and pharmacology. *Pharmacol Ther* 90: 1–19, 2001.
  128. Robertson TP, Hague D, Aaronson PI, and Ward JP. Voltage-independent calcium entry in hypoxic pulmonary vasoconstriction of intrapulmonary arteries of the rat. *J Physiol* 525: 669–680, 2000.
  129. Rozanski GJ and Xu Z. Glutathione and K<sup>+</sup> channel remodeling in postinfarction rat heart. *Am J Physiol Heart Circ Physiol* 282: H2346–H2355, 2002.
  130. Sahoo N, Schonherr R, Hoshi T, and Heinemann SH. Cysteines control the N- and C-linker-dependent gating of KCNH1 potassium channels. *Biochim Biophys Acta* 1818: 1187–1195, 2012.
  131. Schach C, Xu M, Platoshyn O, Keller SH, and Yuan JX. Thiol oxidation causes pulmonary vasodilation by activating K<sup>+</sup> channels and inhibiting store-operated Ca<sup>2+</sup> channels. *Am J Physiol Lung Cell Mol Physiol* 292: L685–L698, 2007.
  132. Schumacker PT. Lung cell hypoxia: role of mitochondrial reactive oxygen species signaling in triggering responses. *Proc Am Thorac Soc* 8: 477–484, 2011.
  133. Scragg JL, Dallas ML, Wilkinson JA, Varadi G, and Peers C. Carbon monoxide inhibits L-type Ca<sup>2+</sup> channels via redox modulation of key cysteine residues by mitochondrial reactive oxygen species. *J Biol Chem* 283: 24412–24419, 2008.
  134. Seddon M, Looi YH, and Shah AM. Oxidative stress and redox signalling in cardiac hypertrophy and heart failure. *Heart* 93: 903–907, 2007.
  135. Seimetz M, Parajuli N, Pichl A, Veit F, Kwapiszewska G, Weisel FC, Milger K, Egemnazarov B, Turowska A, Fuchs B, Nikam S, Roth M, Sydykov A, Medebach T, Klepetko W, Jaksch P, Dumitrascu R, Garn H, Voswinkel R, Kostin S, Seeger W, Schermuly RT, Grimminger F,

- Ghofrani HA, and Weissmann N. Inducible NOS inhibition reverses tobacco-smoke-induced emphysema and pulmonary hypertension in mice. *Cell* 147: 293–305, 2011.
136. Shimoda LA. Hypoxic regulation of ion channels and transporters in pulmonary vascular smooth muscle. *Adv Exp Med Biol* 661: 221–235, 2010.
137. Shimoda LA and Polak J. Hypoxia. 4. Hypoxia and ion channel function. *Am J Physiol Cell Physiol* 300: C951–C967, 2011.
138. Shimoda LA and Udem C. Interactions between calcium and reactive oxygen species in pulmonary arterial smooth muscle responses to hypoxia. *Respir Physiol Neurobiol* 174: 221–229, 2010.
139. Simon F, Leiva-Salcedo E, Armisen R, Riveros A, Cerda O, Varela D, Eguiguren AL, Olivero P, and Stutzin A. Hydrogen peroxide removes TRPM4 current desensitization conferring increased vulnerability to necrotic cell death. *J Biol Chem* 285: 37150–37158, 2010.
140. Sommer N, Dietrich A, Schermuly RT, Ghofrani HA, Gudermann T, Schulz R, Seeger W, Grimminger F, and Weissmann N. Regulation of hypoxic pulmonary vasoconstriction: basic mechanisms. *Eur Respir J* 32: 1639–1651, 2008.
141. Song MY, Makino A, and Yuan JX. Role of reactive oxygen species and redox in regulating the function of transient receptor potential channels. *Antioxid Redox Signal* 15: 1549–1565, 2011.
142. Steinbicker AU, Liu H, Jiramongkolchai K, Malhotra R, Choe EY, Busch CJ, Graveline AR, Kao SM, Nagasaka Y, Ichinose F, Buys ES, Brouckaert P, Zapol WM, and Bloch KD. Nitric oxide regulates pulmonary vascular smooth muscle cell expression of the inducible cAMP early repressor gene. *Nitric Oxide* 25: 294–302, 2011.
143. Steudel W, Ichinose F, Huang PL, Hurford WE, Jones RC, Bevan JA, Fishman MC, and Zapol WM. Pulmonary vasoconstriction and hypertension in mice with targeted disruption of the endothelial nitric oxide synthase (NOS 3) gene. *Circ Res* 81: 34–41, 1997.
144. Steudel W, Scherrer-Crosbie M, Bloch KD, Weimann J, Huang PL, Jones RC, Picard MH, and Zapol WM. Sustained pulmonary hypertension and right ventricular hypertrophy after chronic hypoxia in mice with congenital deficiency of nitric oxide synthase 3. *J Clin Invest* 101: 2468–2477, 1998.
145. Sturrock A, Cahill B, Norman K, Huecksteadt TP, Hill K, Sanders K, Karwande SV, Stringham JC, Bull DA, Gleich M, Kennedy TP, and Hoidal JR. Transforming growth factor-beta1 induces Nox4 NAD(P)H oxidase and reactive oxygen species-dependent proliferation in human pulmonary artery smooth muscle cells. *Am J Physiol Lung Cell Mol Physiol* 290: L661–L673, 2006.
146. Sun J, Morgan M, Shen RF, Steenbergen C, and Murphy E. Preconditioning results in S-nitrosylation of proteins involved in regulation of mitochondrial energetics and calcium transport. *Circ Res* 101: 1155–1163, 2007.
147. Sun J, Picht E, Ginsburg KS, Bers DM, Steenbergen C, and Murphy E. Hypercontractile female hearts exhibit increased S-nitrosylation of the L-type Ca<sup>2+</sup> channel alpha1 subunit and reduced ischemia/reperfusion injury. *Circ Res* 98: 403–411, 2006.
148. Sun J, Yamaguchi N, Xu L, Eu JP, Stamler JS, and Meissner G. Regulation of the cardiac muscle ryanodine receptor by O(2) tension and S-nitrosoglutathione. *Biochemistry* 47: 13985–13990, 2008.
149. Svoboda LK, Reddie KG, Zhang L, Vesely ED, Williams ES, Schumacher SM, O’Connell RP, Shaw R, Day SM, Anumonwo JM, Carroll KS, and Martens JR. Redox-sensitive sulfenic acid modification regulates surface expression of the cardiovascular voltage-gated potassium channel Kv1.5. *Circ Res* 111: 842–853, 2012.
150. Sylvester JT, Shimoda LA, Aaronson PI, and Ward JP. Hypoxic pulmonary vasoconstriction. *Physiol Rev* 92: 367–520, 2012.
151. Tabet F, Savoia C, Schiffrin EL, and Touyz RM. Differential calcium regulation by hydrogen peroxide and superoxide in vascular smooth muscle cells from spontaneously hypertensive rats. *J Cardiovasc Pharmacol* 44: 200–208, 2004.
152. Tang K, Li X, Zheng MQ, and Rozanski GJ. Role of apoptosis signal-regulating kinase-1-c-Jun NH2-terminal kinase-p38 signaling in voltage-gated K<sup>+</sup> channel remodeling of the failing heart: regulation by thioredoxin. *Antioxid Redox Signal* 14: 25–35, 2011.
153. ten Freyhaus H, Dumitrescu D, Berghausen E, Vantler M, Caglayan E, and Rosenkranz S. Imatinib mesylate for the treatment of pulmonary arterial hypertension. *Expert Opin Investig Drugs* 21: 119–134, 2012.
154. Thuringer D and Findlay I. Contrasting effects of intracellular redox couples on the regulation of maxi-K channels in isolated myocytes from rabbit pulmonary artery. *J Physiol* 500: 583–592, 1997.
155. Tipparaju SM, Li XP, Kilfoil PJ, Xue B, Uversky VN, Bhatnagar A, and Barski OA. Interactions between the C-terminus of Kv1.5 and Kvbeta regulate pyridine nucleotide-dependent changes in channel gating. *Pflugers Arch* 463: 799–818, 2012.
156. Tipparaju SM, Liu SQ, Barski OA, and Bhatnagar A. NADPH binding to beta-subunit regulates inactivation of voltage-gated K(+) channels. *Biochem Biophys Res Commun* 359: 269–276, 2007.
157. Tipparaju SM, Saxena N, Liu SQ, Kumar R, and Bhatnagar A. Differential regulation of voltage-gated K<sup>+</sup> channels by oxidized and reduced pyridine nucleotide coenzymes. *Am J Physiol Cell Physiol* 288: C366–C376, 2005.
158. Tonks NK. Protein tyrosine phosphatases: from genes, to function, to disease. *Nat Rev Mol Cell Biol* 7: 833–846, 2006.
159. Ueda K, Valdivia C, Medeiros-Domingo A, Tester DJ, Vatta M, Farrugia G, Ackerman MJ, and Makielski JC. Syntrophin mutation associated with long QT syndrome through activation of the nNOS-SCN5A macromolecular complex. *Proc Natl Acad Sci U S A* 105: 9355–9360, 2008.
160. Viola HM, Arthur PG, and Hool LC. Transient exposure to hydrogen peroxide causes an increase in mitochondria-derived superoxide as a result of sustained alteration in L-type Ca<sup>2+</sup> channel function in the absence of apoptosis in ventricular myocytes. *Circ Res* 100: 1036–1044, 2007.
161. Wang QS, Zheng YM, Dong L, Ho YS, Guo Z, and Wang YX. Role of mitochondrial reactive oxygen species in hypoxia-dependent increase in intracellular calcium in

- pulmonary artery myocytes. *Free Radic Biol Med* 42: 642–653, 2007.
162. Wang X, Tong M, Chinta S, Raj JU, and Gao Y. Hypoxia-induced reactive oxygen species downregulate ETB receptor-mediated contraction of rat pulmonary arteries. *Am J Physiol Lung Cell Mol Physiol* 290: L570–L578, 2006.
  163. Wang Y, Coe Y, Toyoda O, and Cocceani F. Involvement of endothelin-1 in hypoxic pulmonary vasoconstriction in the lamb. *J Physiol* 482: 421–434, 1995.
  164. Wang YX and Zheng YM. ROS-dependent signaling mechanisms for hypoxic Ca(2+) responses in pulmonary artery myocytes. *Antioxid Redox Signal* 12: 611–623, 2010.
  165. Waypa GB, Chandel NS, and Schumacker PT. Model for hypoxic pulmonary vasoconstriction involving mitochondrial oxygen sensing. *Circ Res* 88: 1259–1266, 2001.
  166. Waypa GB, Guzy R, Mungai PT, Mack MM, Marks JD, Roe MW, and Schumacker PT. Increases in mitochondrial reactive oxygen species trigger hypoxia-induced calcium responses in pulmonary artery smooth muscle cells. *Circ Res* 99: 970–978, 2006.
  167. Waypa GB and Schumacker PT. Hypoxic pulmonary vasoconstriction: redox events in oxygen sensing. *J Appl Physiol* 98: 404–414, 2005.
  168. Waypa GB and Schumacker PT. Hypoxia-induced changes in pulmonary and systemic vascular resistance: where is the O<sub>2</sub> sensor? *Respir Physiol Neurobiol* 174: 201–211, 2010.
  169. Wehage E, Eisfeld J, Heiner I, Jungling E, Zitt C, and Luckhoff A. Activation of the cation channel long transient receptor potential channel 2 (LTRPC2) by hydrogen peroxide. A splice variant reveals a mode of activation independent of ADP-ribose. *J Biol Chem* 277: 23150–23156, 2002.
  170. Weir EK, Hong Z, and Chen Y. Superoxide dismutase: master and commander? *Eur Respir J* 36: 234–236, 2010.
  171. Weir EK and Olschewski A. Role of ion channels in acute and chronic responses of the pulmonary vasculature to hypoxia. *Cardiovasc Res* 71: 630–641, 2006.
  172. Weir EK, Will JA, Lundquist LJ, Eaton JW, and Chesler E. Diamide inhibits pulmonary vasoconstriction induced by hypoxia or prostaglandin F<sub>2</sub> alpha. *Proc Soc Exp Biol Med* 173: 96–103, 1983.
  173. Weissmann N, Kuzkaya N, Fuchs B, Tiyerili V, Schafer RU, Schutte H, Ghofrani HA, Schermuly RT, Schudt C, Sydykov A, Egemnazarow B, Seeger W, and Grimminger F. Detection of reactive oxygen species in isolated, perfused lungs by electron spin resonance spectroscopy. *Respir Res* 6: 86, 2005.
  174. Weissmann N, Vogels H, Schermuly RT, Ghofrani HA, Hanze J, Fink L, Rose F, Seeger W, and Grimminger F. Measurement of exhaled hydrogen peroxide from rabbit lungs. *Biol Chem* 385: 259–264, 2004.
  175. Weng J, Cao Y, Moss N, and Zhou M. Modulation of voltage-dependent Shaker family potassium channels by an aldo-keto reductase. *J Biol Chem* 281: 15194–15200, 2006.
  176. Wu W, Platoshyn O, Firth AL, and Yuan JX. Hypoxia divergently regulates production of reactive oxygen species in human pulmonary and coronary artery smooth muscle cells. *Am J Physiol Lung Cell Mol Physiol* 293: L952–L959, 2007.
  177. Xie ZJ, Wang YH, Askari A, Huang WH, Klaunig JE, and Askari A. Studies on the specificity of the effects of oxygen metabolites on cardiac sodium pump. *J Mol Cell Cardiol* 22: 911–920, 1990.
  178. Xu KY and Becker LC. Ultrastructural localization of glycolytic enzymes on sarcoplasmic reticulum vesicles. *J Histochem Cytochem* 46: 419–427, 1998.
  179. Xu SZ, Sukumar P, Zeng F, Li J, Jairaman A, English A, Naylor J, Ciurtin C, Majeed Y, Milligan CJ, Bahnasi YM, Al-Shawaf E, Porter KE, Jiang LH, Emery P, Sivaprasadarao A, and Beech DJ. TRPC channel activation by extracellular thioredoxin. *Nature* 451: 69–72, 2008.
  180. Yang Y, Jin X, and Jiang C. S-glutathionylation of ion channels: insights into the regulation of channel functions, thiol modification crosstalk, and mechanosensing. *Antioxid Redox Signal* 20: 937–951, 2014.
  181. Yang Y, Shi W, Chen X, Cui N, Konduru AS, Shi Y, Trower TC, Zhang S, and Jiang C. Molecular basis and structural insight of vascular K(ATP) channel gating by S-glutathionylation. *J Biol Chem* 286: 9298–9307, 2011.
  182. Yoshida T, Inoue R, Morii T, Takahashi N, Yamamoto S, Hara Y, Tominaga M, Shimizu S, Sato Y, and Mori Y. Nitric oxide activates TRP channels by cysteine S-nitrosylation. *Nat Chem Biol* 2: 596–607, 2006.
  183. Yuan XJ. Voltage-gated K<sup>+</sup> currents regulate resting membrane potential and [Ca<sup>2+</sup>]<sub>i</sub> in pulmonary arterial myocytes. *Circ Res* 77: 370–378, 1995.
  184. Yuan XJ, Wang J, Juhaszova M, Golovina VA, and Rubin LJ. Molecular basis and function of voltage-gated K<sup>+</sup> channels in pulmonary arterial smooth muscle cells. *Am J Physiol* 274: L621–L635, 1998.
  185. Zhang H, Tao L, Jiao X, Gao E, Lopez BL, Christopher TA, Koch W, and Ma XL. Nitrate thioredoxin inactivation as a cause of enhanced myocardial ischemia/reperfusion injury in the aging heart. *Free Radic Biol Med* 43: 39–47, 2007.
  186. Zhang SL, Yeromin AV, Zhang XH, Yu Y, Safrina O, Penna A, Roos J, Stauderman KA, and Cahalan MD. Genome-wide RNAi screen of Ca(2+) influx identifies genes that regulate Ca(2+) release-activated Ca(2+) channel activity. *Proc Natl Acad Sci U S A* 103: 9357–9362, 2006.
  187. Zheng MQ, Li X, Tang K, Sharma NM, Wyatt TA, Patel KP, Gao L, Bidasee KR, and Rozanski GJ. Pyruvate restores beta-adrenergic sensitivity of L-type Ca(2+) channels in failing rat heart: role of protein phosphatase. *Am J Physiol Heart Circ Physiol* 304: H1352–H1360, 2013.

Address correspondence to:

Dr. Andrea Olschewski  
Ludwig Boltzmann Institute for Lung Vascular Research  
Stiftingtalstr. 24  
Graz 8010  
Austria

E-mail: andrea.olschewski@medunigraz.at

Date of first submission to ARS Central, March 21, 2014;  
date of acceptance, April 5, 2014.

**Abbreviations Used**

$\gamma$ -GCL = gamma-glutamyl cysteine ligase  
 $\gamma$ -GGT = gamma-glutamyl transpeptidase  
 AOAA = amino oxyacetic acid  
 BKCa = calcium-dependent potassium channel  
 $Ca^{2+}$  = calcium  
 cADP = cyclic adenosine diphosphate  
 CBS = cystathionine beta-synthetase  
 cGMP = cyclic guanosine monophosphate  
 CICR =  $Ca^{2+}$ -induced  $Ca^{2+}$ -release  
 CO = carbon monoxide  
 CoQ = Coenzyme Q  
 DA = ductus arteriosus  
 DAG = diacylglycerol  
 DTNB = 5,5'-dithio-bis(2-nitrobenzoic acid)  
 DTT = dithiothreitol  
 EC = endothelial cells  
 eNOS = endothelial nitric oxide synthase isoenzyme  
 ENOX = disulfide-thiol exchanger  
 ETC = electron transport chain  
 GAPDH = glyceraldehydes(s) 3-phosphate dehydrogenase  
 GPxs = glutathione peroxidases  
 GR = glutathione reductase  
 GS = glutathione synthetase  
 GSH = reduced glutathione  
 GSNO = S-nitrosoglutathione  
 GSSG = oxidized glutathione  
 GSTs = glutathione s-transferases  
 GTP = guanosintriphosphat  
 $H_2DCF$  = dichlorodihydrofluorescein  
 $H_2O_2$  = hydrogen peroxide  
 HIF = hypoxia-inducible factor  
 HPV = hypoxic pulmonary vasoconstriction  
 $H_2S$  = hydrogen sulfide  
 iNOS = inducible NO synthase isoenzyme  
 $IP_3R$  = inositol trisphosphate receptor  
 $K^+$  = potassium  
 $K_{ATP}$  = ATP-sensitive  $K^+$  channel  
 KCNE1 = potassium voltage-gated channel subfamily E member 1  
 KCNH1 = potassium voltage-gated channel subfamily H member 1  
 KCNQ1 = potassium voltage-gated channel, KQT-like subfamily, member 1  
 Kir = potassium inwardly rectifying channel  
 Kv = voltage-gated potassium channel  
 MA = mesenteric artery  
 MTSEA = 2-aminoethyl methanethiosulfonate hydrobromide

MTSET = 2-(trimethylammonium)ethyl methanethiosulfonate bromide  
 NaHS = sodium hydrosulfide  
 NCX =  $Na^+/Ca^{2+}$  exchanger  
 nNOS = neuronal NO synthase isoenzyme  
 NO = nitric oxide  
 Nox = NADPH oxidase  
 NQO1 = NAD(P):quinone oxidoreductase 1  
 $O_2^{\bullet-}$  = superoxide  
 Orai = calcium release-activated calcium channel  
 PA = pulmonary artery  
 PAECs = pulmonary artery endothelial cells  
 PAR-2 = protease-activated receptor-2  
 PDGF = platelet-derived growth factor  
 PH = pulmonary hypertension  
 PMCA = plasma membrane calcium  
 PMET = plasma membrane electron transport  
 P-SSG = protein S-glutathionylation  
 PTP = protein tyrosine phosphatase  
 ROC = receptor-operated  $Ca^{2+}$  channels  
 ROS = reactive oxygen species  
 RSOH = sulfenic  
 $RSO_2H$  = sulfinic  
 $RSO_3H$  = sulfonic  
 RTK = receptor tyrosine kinase  
 RyR = ryanodine receptor  
 RyR2 = RyR/ $Ca^{2+}$  release channel  
 SERCA = sarcoplasmic/endoplasmic reticulum calcium ATPase  
 sGC = soluble guanylate cyclase  
 SH = Src homology  
 SMC = smooth muscle cell  
 SNO = S-nitrosylation  
 SOC = store-operated  $Ca^{2+}$  channels  
 SOD = superoxide dismutase  
 SR = sarcoplasmic reticulum  
 src = sarcoma  
 STIM = stromal interaction molecule  
 TASK-1 = TWIK-related acid-sensitive potassium channel 1  
 tBOOH = tertiary butyl hydroperoxide  
 TGF = transforming growth factor  
 t-PMET = trans-plasma membrane electron transport  
 TRP = transient-receptor potential  
 TRPC = transient-receptor potential cation  
 TRPM = transient-receptor potential cation channel, subfamily M  
 Trx = thioredoxin  
 TrxR = thioredoxin reductase  
 VDCC = voltage-dependent  $Ca^{2+}$  channels  
 VSMCs = vascular smooth muscle cells