

Regional Astrocyte Allocation Regulates CNS Synaptogenesis and Repair

Hui-Hsin Tsai,^{1,2,5} Huiliang Li,^{6*} Luis C. Fuentealba,^{4,5*} Anna V. Molofsky,^{1,3,5*} Raquel Taveira-Marques,^{6*} Helin Zhuang,⁶ April Tenney,^{1,2} Alice T. Murnen,^{1,2,5} Stephen P. J. Fancy,^{1,2,5} Florian Merkle,^{4†} Nicoletta Kessarlis,⁶ Arturo Alvarez-Buylla,^{4,5‡} William D. Richardson,^{6‡} David H. Rowitch^{1,2,4,5‡}

¹Howard Hughes Medical Institute, University of California San Francisco, San Francisco, CA 94143, USA.

²Department of Pediatrics, University of California San Francisco, San Francisco, CA 94143, USA.

³Department of Psychiatry/Langley-Porter Institute, University of California San Francisco, San Francisco, CA 94143, USA.

⁴Department of Neurosurgery, University of California San Francisco, San Francisco, CA 94143, USA.

⁵Eli and Edythe Broad Center of Regeneration Medicine and Stem Cell Research, University of California San Francisco, San Francisco, CA 94143, USA.

⁶Wolfson Institute for Biomedical Research and Research Department of Cell and Developmental Biology, University College London, London WC1E 6BT, UK.

*These authors contributed equally to this work.

†Present address: Departments of Stem Cell and Regenerative Biology and Molecular and Cellular Biology, Harvard University, Cambridge, MA 02138, USA.

‡To whom correspondence should be addressed. E-mail: rowitchd@pediatrics.ucsf.edu (D.H.R.); abuylla@stemcell.ucsf.edu (A.A.-B.); w.richardson@ucl.ac.uk (W.D.R.)

Astrocytes, the most abundant cell population in the central nervous system (CNS), are essential for normal neurological function. We show that astrocytes are allocated to spatial domains in murine spinal cord and brain in accordance with their embryonic sites of origin in the ventricular zone. These domains remain stable throughout life without evidence of secondary tangential migration, even after acute CNS injury. Domain-specific depletion of astrocytes in ventral spinal cord resulted in abnormal motor neuron synaptogenesis, which was not rescued by immigration of astrocytes from adjoining regions. Our findings demonstrate that region-restricted astrocyte allocation is a general CNS phenomenon, and reveal intrinsic limitations of the astroglial response to injury.

Astrocytes serve roles essential for normal neurological function such as regulation of synapse formation, maintenance of the blood-brain-barrier (BBB) and neuronal homeostasis (1, 2). Although astroglia are regionally heterogeneous in terms of gene expression and their electrical and functional properties (3–5), astrocyte diversification and migration remain poorly understood. Two generally recognized types of astrocytes are fibrous astrocytes (FAs) of white matter that express Glial Fibrillary Acidic Protein (GFAP), and protoplasmic astrocytes (PAs) of grey matter that normally express little or no GFAP. *Aldh1L1-GFP* and *AldoC* are more recently described markers of both PAs and FAs (6, 7). Embryonic astrocytes derive from radial glia (8–10) and several lines of evidence indicate that glial sub-type specification in the ventral spinal cord is determined according to a segmental template (11). For example, bHLH proteins *Olig2* and *SCL* regulate oligodendrocyte versus astrocyte precursor cell fate in the pMN and p2 neuroepithelial progenitor domains, respectively (12), and homeodomain proteins *Nkx6.1* and *Pax6* regulate the region-specific molecular phenotype of FAs in the ventral spinal cord (13).

How do astrocytes disseminate from their sites of origin in the ventricular zone (VZ)? Two distinct modes of astrocyte migration have been reported. Retroviral fate mapping of neonatal SVZ progenitors (14) and

transplantation of glial precursors (15) suggest that astrocytes can migrate long distances and in multiple directions, implying that astrocytes derived from radial glia (or other precursors) in different VZ domains might intermix (fig. S1A). Consistent with this model, some PAs have been proposed to derive from migratory NG2 cells (16). In contrast, astrocytes might distribute stringently into “segmental” territories correlating with their domains of origin in the patterned VZ (8–10), without secondary tangential migration. Although little is known about regulation of astrocyte progenitor migration during development, *Stat3* signaling and *Cdc42* have been shown to function in reactive astrocyte invasion of lesions after injury (17, 18).

Establishing how astrocytes are allocated to different territories is key to understanding how they might develop to support regionally diversified neurons. We first investigated this in vivo by conditional reporter fate mapping of radial glia and their progeny in distinct dorsal-ventral (DV) spinal cord domains (fig. S1B, table S2). Labeling for the reporter protein together with markers of neurons (*NeuN*), oligodendrocytes (*Olig2*) or fibrous astrocytes (*GFAP*) allowed us to compare production of these cell types across domains (table S1, Fig. 1, fig. S1) (19).

We found that FAs from the p3 progenitor domain (defined by *Nkx2.2-creERT2*) invariably remained close to the ventral midline (Fig. 1A). The pMN domain (*Olig2-*iva-cre**) generated mainly oligodendrocyte precursor

cells (OPs), which migrated extensively (Fig. 1B,H), and some FAs [4% of all GFP+ cells in spinal cord at postnatal day 7 (P7)] (fig. S1D, table S1) (20), that settled in ventral white matter (Fig. 1B). For intermediate and dorsal domains, we used cre driven by *Ngn3*, *Dbx1*, *Msx3*, *Math1* or *Pax3* regulatory sequences (Fig. 1C,D; table S1, fig. S1E-H). These data indicate that all spinal cord GFAP+ FAs distribute radially, in register with the DV position of their neuroepithelial precursors.

PAs and FAs are morphologically and functionally distinct (21, 22). We employed *Aldh1L1-GFP* astrocyte-specific reporter mice (7) and antibodies recognizing *AldoC* (6), which mark both PAs and FAs but few, if any, neurons or *Olig2+* cells (Fig. 1E,F; fig. S2E; fig. S3A,B; Movie S1). Fate mapping of *BLBP-cre* expressing precursors (fig. S3C,D) demonstrated that PA and FA are generated from radial glia and/or their progeny. PAs and FAs originating from the same precursor domain came to rest within overlapping territories. For example, combining *Pax3-cre* with the *Aldh1L1-GFP* reporter confirmed that all *Pax3*-derived PAs and FAs remained confined to dorsal spinal cord (Fig. 1G). Despite reports that FAs and PAs develop via distinct pathways (16, 23, 24), we did not observe any domain dedicated to either FAs or PAs.

We next attempted to disrupt radial astrocyte distribution. First, be-

cause embryonic pMN-derived OPs disperse in all directions (Fig. 1I) (25), we tested whether this domain might similarly promote tangential astrocyte migration. In *Olig2* null embryos the pMN domain is transformed into a p2-like domain that generates astrocytes instead of OPs (26). In the E18 *Olig2-cre*-null spinal cord, we found increased numbers of “p2-type” astrocytes (fig. S1I) but, nonetheless, these remained spatially constrained within the ventral cord (Fig. 1I-N). While all domains examined produced astrocytes, they showed different potential for the generation of astrocytes versus oligodendrocytes (fig. S1J), most dramatically illustrated by *Olig2*-null animals. Time-lapse imaging of spinal cord slice cultures revealed exclusively radial movement of *Aldh1L1-GFP* cells (fig. S3E,F), even after a heterotopic transfer of GFP-labeled VZ progenitors into unlabeled slices (fig. S3G-K). Together, these data reveal a strictly segmental investment of the developing spinal cord by astrocytes (fig. S1A).

Might astrocytes undergo secondary tangential migration at later stages or during adulthood? *Ngn3* transcripts are transiently expressed in intermediate neural tube from E12.5-14.5 (fig. S2A-D). As shown (Fig. 2A, fig. S2E,F), intermediate domain PAs derived from embryonic *Ngn3-cre* labeled radial glia persisted up to six months without attrition or migration. We induced *Nkx2.2-creERT2:Rosa26-YFP* mice with tamoxifen (E10-12, after generation of p3-derived neurons) and visualized the labeled astrocytes one year later (Fig. 2B). Even at this advanced age, FAs and PAs were confined in a tight ventromedial distribution. These findings show that the long-term distribution of astrocytes in the adult spinal cord is determined during embryogenesis by their site of origin in the VZ (fig. S2G).

We attempted to disrupt the normal “segmental” pattern of astrocytes by acute injury-induced gliosis in adult *Rosa26 -tdTomato* conditional reporters crossed into *Nkx2.2-creERT2* (induced at E14) or *Dbx1-cre* backgrounds. However, no ventrally derived astrocytes migrated into a dorsal stab wound after 12 or 28 days, despite the lesion tract passing very close to the labeled astrocytes (Fig. 2C-F).

A possible explanation for the lack of mobility was that all astrocyte niches were fully occupied, preventing immigration from other domains. Previously, we achieved selective elimination of OPs using *Diphtheria toxin A (DTA)* under *Sox10* transcriptional control (27). We generated an analogous *Aldh1L1*-based system in which the non-recombined transgene expresses *eGFP*, whereas cre exposure deletes *eGFP* and promotes *DTA* expression (Fig. 3A). Intercrosses with *Pax3-cre* mice resulted in perinatal lethality (10% survivors observed versus 25% expected). The dorsal spinal cord (corresponding to the *Pax3* domain) of P25 animals showed atrophy, reduction in the total number of *Aldh1L1*-expressing cells, loss of neuropil and congested neurons (Fig. 3C,D; fig. S4A). We did not observe increased inflammation, gliosis or BBB permeability in these mice (fig. S4A,C), suggesting that remaining astrocytes were sufficient for structural maintenance. While ventral astrocytes might have invaded to rescue the dorsal cord, this possibility was ruled out because they would have continued to express GFP. The mild phenotype of *Pax3-cre:Aldh1L1-DTA* animals suggested astrocyte depletion rather than ablation. We quantified astrocyte depletion by crossing *Aldh1L1-DTA* with *BLBP-cre*, active in radial glia. Double-transgenics died at birth, but at E17.5 we observed 43% excision of transgene GFP and a 28% reduction in AldoC+ astrocytes (fig. S4B). It is possible that some astrocytes survived because they are resistant to attenuated *DTA* (27); alternatively, BAC transgene expression might be variegated.

We tested whether astrocyte depletion could be used to assess local neuronal support functions using *Olig2-cre:Aldh1L1-DTA* mice, which were suitable because motor neurons (MNs, derived from pMN) are invested with several synaptic terminal types (Fig. 3E). While we found a ~30% depletion of AldoC+ astrocytes in the ventral horns at P28 (fig. S4C), the number and size of MNs was unaffected (fig. S5A,B). We counted choline acetyltransferase (CHAT)+ synaptic relays over the

entire surface of MN soma but found no significant differences between *DTA* and control mice (fig. S5C). Similarly, we found no change in the number of vGluT2-PSD95+ excitatory pre-synaptic inputs (fig. S5F). In contrast, there was a significant ($p = 0.006$) decrease in functional vGluT1-PSD95+ excitatory inputs from proprioceptive axons and a significant increase ($p = 0.004$) in vGAT-gephyrin+ inhibitory inputs in *DTA* mice (Fig. 3H-K,S5D,E). Thus, pMN-derived astrocytes are required for genesis and/or maintenance of certain types of synapses on MNs and this function cannot be rescued by astrocytes from adjacent domains.

Is localized investment of astrocytes a general phenomenon throughout the CNS? We analyzed intercrosses of *Emx1-cre*, *Dbx1-cre* or *Nkx2.1-cre* drivers, which label dorsal, intermediate and ventral forebrain precursor cells, respectively, with a conditional *Rosa-tdTomato* reporter line or *Aldh1L1-GFP*. Forebrain astrocytes all demonstrated DV restriction associated with their domains of origin without detectable secondary migration (Fig. 4A-N,S7A), even after injury (fig. S6). We observed many GFP+ cortical interneurons in *Nkx2.1-cre:Rosa-tdTomato* mice that migrate from the medial ganglionic eminence during development (Fig. 4K-N). In sharp contrast, astrocytes derived from *Nkx2.1-cre* territory remained ventral (Fig. 4J,L,N).

Our transgenic cre-loxP approach labeled broad progenitor domains. For higher resolution, we targeted foci of radial glia by Adenovirus-cre infection of the cortical surface of P1 *Z/EG* reporter mice (28), and analyzed the forebrains by GFP immunolabeling at P4 and P28 (Fig. 4O-S; fig. S7B). At P4, GFP+, AldoC+ immature astrocytes were found in close association with infected radial glial fibers (Fig. 4O). At P28, we observed restricted labeling of ependymal and astrocyte-like cells in the VZ and Sub-VZ along with a trail of astrocytes distributed along the former trajectory of the radial glial processes (Fig. 4P-R). This experiment was performed repeatedly ($n = 77$) to label dorsal-ventral and rostral-caudal regions comprehensively. Three-dimensional reconstructions of findings are summarized in Fig. 4S and Movies S2-5. In every case, we found that the distribution of labeled astrocytes corresponded closely to the trajectories of the processes of their radial glial ancestors, in keeping with other findings in cortex (29).

Although certain astrocyte functions might be common throughout the CNS (e.g., formation of the BBB), other functions subserve the local neuronal circuitry and might be domain-specific. In the present study we tested (1) whether astrocytes generated in different domains become intermixed or remain spatially segregated, (2) whether neurons are functionally dependent on astrocytes that are generated from the same progenitor domains, and (3) whether such domain-specific roles can be rescued by astrocytes from adjacent regions. Our data indicate that astrocytes migrate from the VZ in a strictly radial fashion, reminiscent of the columnar distribution of cortical projection neurons (30), forming well-defined, stable spatial domains throughout the CNS. We found no evidence for secondary tangential migration of FAs or PAs during development, adulthood or following injury. Consistent with our findings, a recent study shows postnatal cortical astrocyte generation from local, non-radial glial precursors (31). The restricted distribution of forebrain astrocytes following neonatal adenovirus infection results in exquisite maps reflecting the original trajectory of their radial glial precursors. It follows that astrocytes might serve as a scaffold and retain spatially encoded information established during neural tube patterning, e.g. for purposes of axon guidance.

Astrocytes in various spatial domains might become specialized for interactions with their own particular neuronal neighbors as result of common patterning mechanisms. We selectively removed a fraction of pMN-derived astrocytes by targeted expression of *DTA* and found that numbers of certain synapses on MNs were significantly altered. Our findings show that astrocytes from neighboring progenitor domains were unable to invade and rescue the depleted area, indicating essential re-

gion-specific neuron-astrocyte interactions. The transgenic tools we have developed allow for genetic manipulation of specific astrocyte subgroups, e.g., to mis-specify their positional fate while leaving early VZ patterning and neuronal sub-type specification intact. Our findings demonstrate that region-restricted astrocyte allocation is a general CNS phenomenon and reveal intrinsic limitations of the astroglial response to injury. They further suggest that astrocytes might act as stable repositories of spatial information necessary for development and local regulation of brain function.

References and Notes

- H. Kettenmann, B. R. Ransom, *Neuroglia*. (Oxford University Press, 2005).
- D. D. Wang, A. Bordey, The astrocyte odyssey. *Prog. Neurobiol.* **86**, 342 (2008). [Medline](#)
- J. P. Doyle *et al.*, Application of a translational profiling approach for the comparative analysis of CNS cell types. *Cell* **135**, 749 (2008). [doi:10.1016/j.cell.2008.10.029 Medline](#)
- V. Houades, A. Koulakoff, P. Ezan, I. Seif, C. Giaume, Gap junction-mediated astrocytic networks in the mouse barrel cortex. *J. Neurosci.* **28**, 5207 (2008). [doi:10.1523/JNEUROSCI.5100-07.2008 Medline](#)
- A. Nimmerjahn, E. A. Mukamel, M. J. Schnitzer, Motor behavior activates Bergmann glial networks. *Neuron* **62**, 400 (2009). [doi:10.1016/j.neuron.2009.03.019 Medline](#)
- R. M. Bachoo *et al.*, Molecular diversity of astrocytes with implications for neurological disorders. *Proc. Natl. Acad. Sci. U.S.A.* **101**, 8384 (2004). [doi:10.1073/pnas.0402140101 Medline](#)
- J. D. Cahoy *et al.*, A transcriptome database for astrocytes, neurons, and oligodendrocytes: a new resource for understanding brain development and function. *J. Neurosci.* **28**, 264 (2008). [doi:10.1523/JNEUROSCI.4178-07.2008 Medline](#)
- S. C. Noctor, V. Martínez-Cerdeño, L. Ivic, A. R. Kriegstein, Cortical neurons arise in symmetric and asymmetric division zones and migrate through specific phases. *Nat. Neurosci.* **7**, 136 (2004). [doi:10.1038/nm1172 Medline](#)
- D. E. Schmechel, P. Rakic, A Golgi study of radial glial cells in developing monkey telencephalon: morphogenesis and transformation into astrocytes. *Anat. Embryol. (Berl.)* **156**, 115 (1979). [doi:10.1007/BF00300010 Medline](#)
- T. Voigt, Development of glial cells in the cerebral wall of ferrets: direct tracing of their transformation from radial glia into astrocytes. *J. Comp. Neurol.* **289**, 74 (1989). [doi:10.1002/cne.902890106 Medline](#)
- D. H. Rowitch, Glial specification in the vertebrate neural tube. *Nat. Rev. Neurosci.* **5**, 409 (2004). [doi:10.1038/nrn1389 Medline](#)
- Y. Muroyama, Y. Fujiwara, S. H. Orkin, D. H. Rowitch, Specification of astrocytes by bHLH protein SCL in a restricted region of the neural tube. *Nature* **438**, 360 (2005). [doi:10.1038/nature04139 Medline](#)
- C. Hochstim, B. Deneen, A. Lukaszewicz, Q. Zhou, D. J. Anderson, Identification of positionally distinct astrocyte subtypes whose identities are specified by a homeodomain code. *Cell* **133**, 510 (2008). [doi:10.1016/j.cell.2008.02.046 Medline](#)
- S. W. Levison, J. E. Goldman, Both oligodendrocytes and astrocytes develop from progenitors in the subventricular zone of postnatal rat forebrain. *Neuron* **10**, 201 (1993). [doi:10.1016/0896-6273\(93\)90311-E Medline](#)
- M. S. Windrem *et al.*, Neonatal chimerization with human glial progenitor cells can both remyelinate and rescue the otherwise lethally hypomyelinated shiverer mouse. *Cell Stem Cell* **2**, 553 (2008). [doi:10.1016/j.stem.2008.03.020 Medline](#)
- X. Zhu, R. A. Hill, A. Nishiyama, NG2 cells generate oligodendrocytes and gray matter astrocytes in the spinal cord. *Neuron Glia Biol.* **4**, 19 (2008). [doi:10.1017/S1740925X09000015 Medline](#)
- S. Okada *et al.*, Conditional ablation of Stat3 or Soes3 discloses a dual role for reactive astrocytes after spinal cord injury. *Nat. Med.* **12**, 829 (2006). [doi:10.1038/nm1425 Medline](#)
- S. Robel, S. Bardehle, A. Lepier, C. Brakebusch, M. Götz, Genetic deletion of cdc42 reveals a crucial role for astrocyte recruitment to the injury site in vitro and in vivo. *J. Neurosci.* **31**, 12471 (2011). [doi:10.1523/JNEUROSCI.2696-11.2011 Medline](#)
- Materials and methods are available as Supplementary Materials on Science Online.
- N. Masahira *et al.*, Olig2-positive progenitors in the embryonic spinal cord give rise not only to motoneurons and oligodendrocytes, but also to a subset of astrocytes and ependymal cells. *Dev. Biol.* **293**, 358 (2006). [doi:10.1016/j.ydbio.2006.02.029 Medline](#)
- C. Shannon, M. Salter, R. Fern, GFP imaging of live astrocytes: regional differences in the effects of ischaemia upon astrocytes. *J. Anat.* **210**, 684 (2007). [doi:10.1111/j.1469-7580.2007.00731.x Medline](#)
- N. A. Oberheim *et al.*, Uniquely hominid features of adult human astrocytes. *J. Neurosci.* **29**, 3276 (2009). [doi:10.1523/JNEUROSCI.4707-08.2009 Medline](#)
- J. Cai *et al.*, A crucial role for Olig2 in white matter astrocyte development. *Development* **134**, 1887 (2007). [doi:10.1242/dev.02847 Medline](#)
- M. S. Rao, M. Noble, M. Mayer-Pröschel, A tripotential glial precursor cell is present in the developing spinal cord. *Proc. Natl. Acad. Sci. U.S.A.* **95**, 3996 (1998). [doi:10.1073/pnas.95.7.3996 Medline](#)
- H. H. Tsai, W. B. Macklin, R. H. Miller, Netrin-1 is required for the normal development of spinal cord oligodendrocytes. *J. Neurosci.* **26**, 1913 (2006). [doi:10.1523/JNEUROSCI.3571-05.2006 Medline](#)
- Q. Zhou, D. J. Anderson, The bHLH transcription factors OLIG2 and OLIG1 couple neuronal and glial subtype specification. *Cell* **109**, 61 (2002). [doi:10.1016/S0092-8674\(02\)00677-3 Medline](#)
- N. Kessaris *et al.*, Competing waves of oligodendrocytes in the forebrain and postnatal elimination of an embryonic lineage. *Nat. Neurosci.* **9**, 173 (2006). [doi:10.1038/nn1620 Medline](#)
- F. T. Merkle, Z. Mirzadeh, A. Alvarez-Buylla, Mosaic organization of neural stem cells in the adult brain. *Science* **317**, 381 (2007). [doi:10.1126/science.1144914 Medline](#)
- S. Magavi, D. Friedmann, G. Banks, A. Stolfi, C. Lois, Coincident generation of pyramidal neurons and protoplasmic astrocytes in neocortical columns. *J. Neurosci.* **32**, 4762 (2012). [doi:10.1523/JNEUROSCI.3560-11.2012 Medline](#)
- P. Rakic, Specification of cerebral cortical areas. *Science* **241**, 170 (1988). [doi:10.1126/science.3291116 Medline](#)
- W. P. Ge, A. Miyawaki, F. H. Gage, Y. N. Jan, L. Y. Jan, Local generation of glia is a major astrocyte source in postnatal cortex. *Nature* **484**, 376 (2012). [doi:10.1038/nature10959 Medline](#)
- R. Taveira-Marques, Fate mapping neural stem cells in the mouse ventral neural tube by Cre-lox transgenesis. Thesis, University College London (2011); http://discovery.ucl.ac.uk/view/theses/UCL_Thesis/2011.html.
- S. E. Schonhoff, M. Giel-Moloney, A. B. Leiter, Neurogenin 3-expressing progenitor cells in the gastrointestinal tract differentiate into both endocrine and non-endocrine cell types. *Dev. Biol.* **270**, 443 (2004). [doi:10.1016/j.ydbio.2004.03.013 Medline](#)
- U. Schüller *et al.*, Acquisition of granule neuron precursor identity is a critical determinant of progenitor cell competence to form Shh-induced medulloblastoma. *Cancer Cell* **14**, 123 (2008). [doi:10.1016/j.ccr.2008.07.005 Medline](#)
- M. H. Fogarty, Fate mapping the neural tube by Cre-loxP transgenesis. Thesis, University of London (2006); www.ucl.ac.uk/~ucbzwdr/Pubs.htm.
- D. Lang *et al.*, Pax3 functions at a nodal point in melanocyte stem cell differentiation. *Nature* **433**, 884 (2005). [doi:10.1038/nature03292 Medline](#)
- V. Matei *et al.*, Smaller inner ear sensory epithelia in Neurog 1 null mice are related to earlier hair cell cycle exit. *Dev. Dyn.* **234**, 633 (2005). [doi:10.1002/dvdy.20551 Medline](#)
- B. Hegedus *et al.*, Neurofibromatosis-1 regulates neuronal and glial cell differentiation from neuroglial progenitors in vivo by both cAMP- and Ras-dependent mechanisms. *Cell Stem Cell* **1**, 443 (2007). [doi:10.1016/j.stem.2007.07.008 Medline](#)
- A. Novak, C. Guo, W. Yang, A. Nagy, C. G. Lobe, Z/EG, a double reporter mouse line that expresses enhanced green fluorescent protein upon Cre-mediated excision. *Genesis* **28**, 147 (2000). [doi:10.1002/1526-968X\(200011/12\)28:3/4<147::AID-GENE90>3.0.CO;2-G Medline](#)
- S. Kawamoto *et al.*, A novel reporter mouse strain that expresses enhanced green fluorescent protein upon Cre-mediated recombination. *FEBS Lett.* **470**, 263 (2000). [doi:10.1016/S0014-5793\(00\)01338-7 Medline](#)
- S. Srinivas *et al.*, Cre reporter strains produced by targeted insertion of EYFP and ECFP into the ROSA26 locus. *BMC Dev. Biol.* **1**, 4 (2001). [doi:10.1186/1471-213X-1-4 Medline](#)
- K. Vintersten *et al.*, Mouse in red: red fluorescent protein expression in mouse ES cells, embryos, and adult animals. *Genesis* **40**, 241 (2004). [doi:10.1002/gene.20095 Medline](#)

43. L. Madisen *et al.*, A robust and high-throughput Cre reporting and characterization system for the whole mouse brain. *Nat. Neurosci.* **13**, 133 (2010). [doi:10.1038/nn.2467](https://doi.org/10.1038/nn.2467) [Medline](#)

Acknowledgments: We thank M. Wong, S. Kaing, U. Dennehy, M. Grist and S. Chang for expert technical help, and Drs E. Huillard, V. Heine and C. Stiles for helpful comments. We thank Dr A. Leiter (U Mass, Worcester, MA) for *Ngn3-cre* mice. L.C.F. is a HHMI Fellow of the Helen Hay Whitney Foundation. R.T.-M. held a studentship from the Portuguese Fundação para a Ciência e a Tecnologia. This work was supported by grants from the NIH, the UK Medical Research Council and Wellcome Trust. A.A.-B. holds the Heather and Melanie Muss Chair of Neurological Surgery. D.H.R. is a HHMI Investigator.

Supplementary Materials

www.sciencemag.org/cgi/content/full/science.1222381/DC1

Materials and Methods

Figs. S1 to S7

Tables S1 and S2

References (32–43)

Movies S1 to S5

26 March 2012; accepted 6 June 2012

Published online 28 June 2012

10.1126/science.1222381

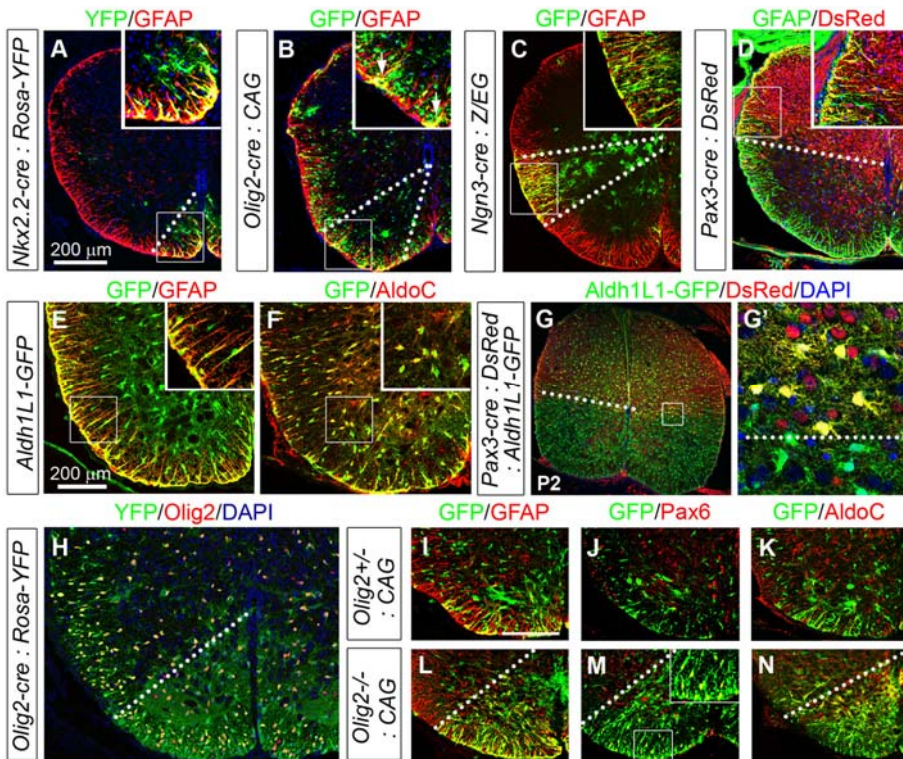


Fig. 1. Segmental distribution of fibrous and protoplasmic astrocytes in spinal cord. (A) *Nkx2.2-creERT2* (tamoxifen induction E10.5-E12.5):*Rosa26-YFP* fate map shows YFP+, GFAP+ cells at the ventral midline at P0. (B) In P2 *Olig2-tva-cre:CAG-GFP* mice, astrocytes remain in register with pMN whereas Olig2+ OPs distribute widely. (C) *Ngn3-cre:ZEG* P1 cord shows intermediate wedge of astrocytes. (D, G, G') At P2, FAs and PAs in *Pax3-cre* animals remain dorsally restricted. (E, F) *Aldh1L1-GFP* co-expression with GFAP+ (FAs) and AldoC+ (FAs and PAs) cells. (H-N) Astrocytes from *Olig2cre/+* spinal cord have a restricted ventral distribution. In *Olig2cre/cre* nulls, we observe significantly ($*p < 0.0001$) increased p2 type (GFAP+, Pax6+, AldoC+) astrocytes (fig. S1), which fail to migrate from the ventral domain. Scale bars = 200 μ m.

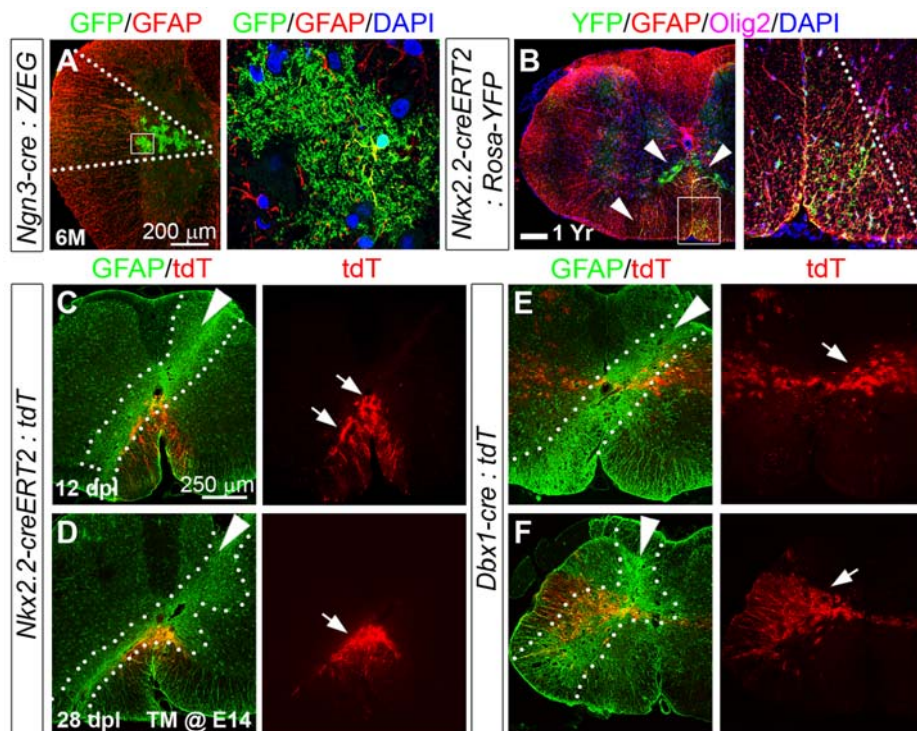


Fig. 2. Absence of tangential astrocyte migration in adult spinal cord even after injury. (A) Bushy GFP+ PAs in *Ngn3-cre:ZEG* cord persisted > 6 months of age. (B) Astrocytes in *Nkx2.2-creERT2* (induced E10-11):*Rosa26-YFP* cords remain ventrally restricted at one year. (C-F) Post-stab gliosis does not recruit astrocytes from adjacent domains. Fate mapped astrocytes (arrows) in *Rosa26-tdTomato* on the *Nkx2.2-creERT2* (induced E14; C, D) or *Dbx1-cre* (E, F) background remain confined to ventral or intermediate cord, respectively, 12dpl and 28dpl. Intense GFAP staining indicates lesion site (dashed lines, white arrowheads indicate needle trajectory).

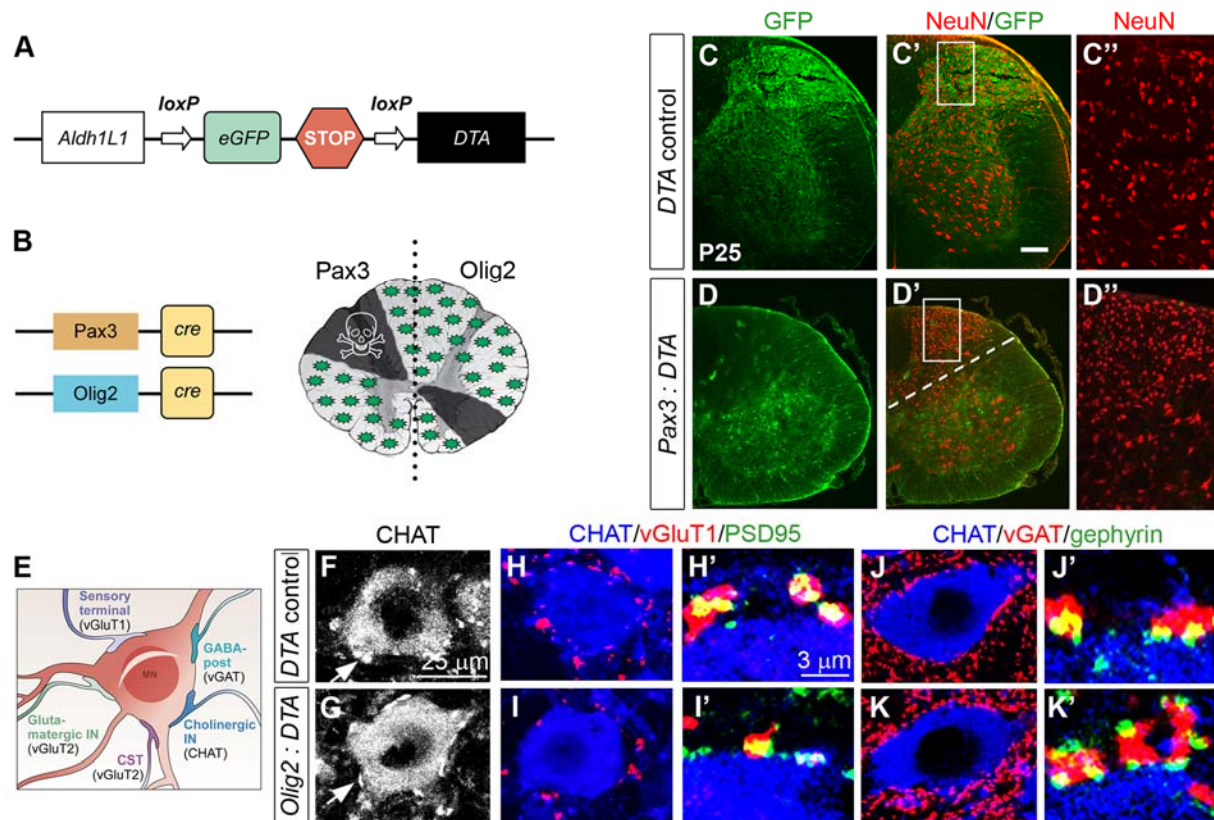


Fig. 3. Regional astrocyte depletion results in neuronal abnormalities. **(A)** Cartoon of *Aldh1L1-DTA* transgene; cre excises eGFP-Stop cassette allowing DTA transcription. **(B)** Regions targeted by *Pax3-cre* or *Olig2-cre*. **(C,D)** *Pax3-cre:Aldh1L1-DTA* mice show absence of GFP, neuropil and congested appearance of NeuN (red) neurons in dorsal cord. **(E)** Cartoon of MN soma and synapse subtypes. **(F,G)** We observed no differences in the number of cholinergic CHAT or vGluT2 (fig. S5) synapses. **(H,I)** Numbers of excitatory vGluT1-PSD95 synapses were significantly decreased while **(J,K)** inhibitory vGAT-Gephyrin synapses were significantly increased in bigenic animals compared with controls. For quantification, see fig. S5.

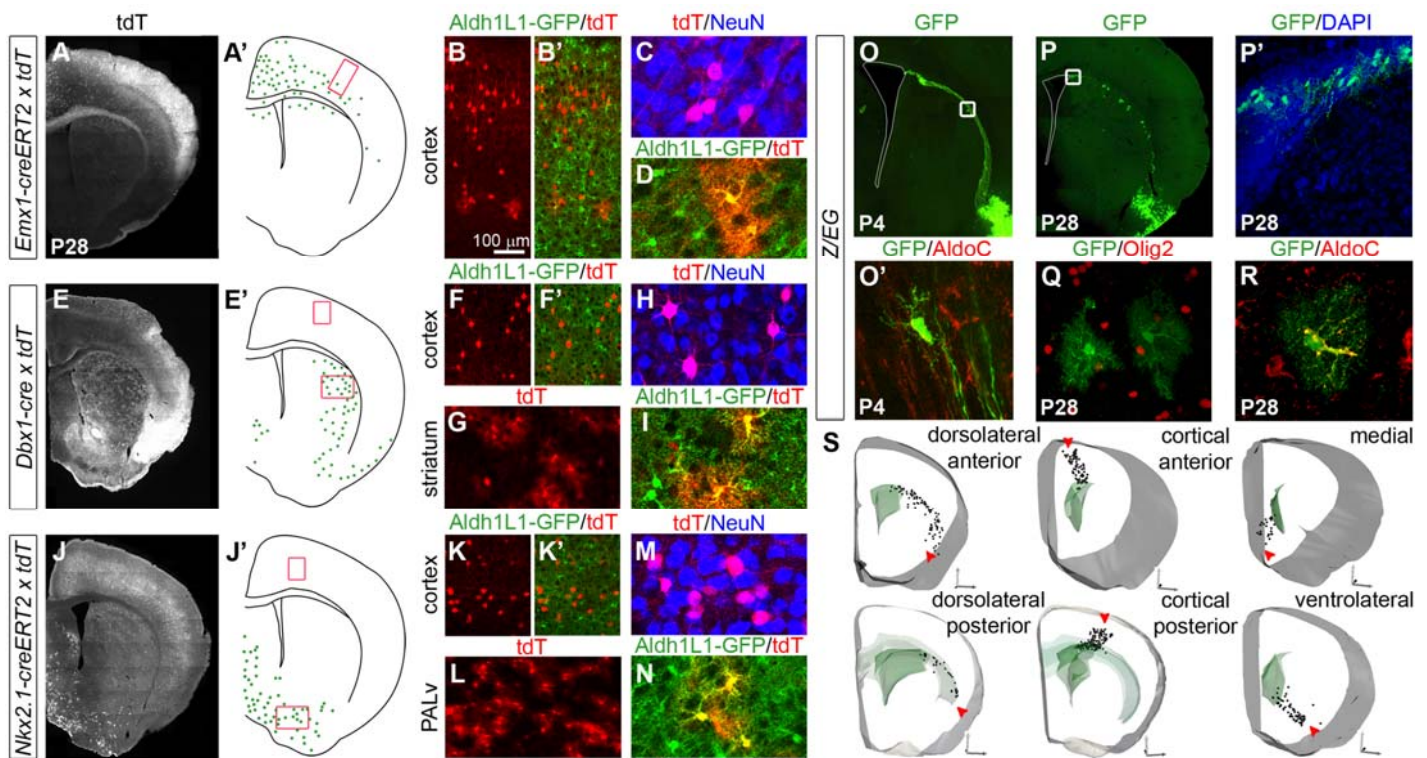


Fig. 4. Region-restricted astrocyte investment from forebrain radial glia. (A-D) *Emx1-creERT2* (induced E17):*Rosa26-tdTomato* labeled cells; note (A') distribution of astrocytes (green) confined to cortical plate and corpus callosum. Red box indicates region of cortex analyzed in B-D. (E-I) Distribution of *Dbx1-cre* astrocytes in striatum. (J-N) Distribution of *Nkx2.1-creERT2* (induced E17) astrocytes in ventromedial forebrain. Red box in cortex indicates fate-mapped interneurons. (O-S) Distribution of astrocytes after radial glial Ad-cre infection of P1 Z/EG reporter mice in the forebrain regions indicated analyzed at P4 or P28. Astrocytes were recognized by morphology and AldoC immunolabeling. We injected dorsal ($n=20$), ventral ($n=21$), medial ($n=19$), and cortical ($n=17$) brain regions (red arrows). No tangential astrocyte migration was observed. PALv, ventral pallidum.