



# HHS Public Access

Author manuscript

*J R Stat Soc Series B Stat Methodol.* Author manuscript; available in PMC 2017 September 01.

Published in final edited form as:

*J R Stat Soc Series B Stat Methodol.* 2017 March ; 79(2): 463–482. doi:10.1111/rssb.12169.

## Regression Models on Riemannian Symmetric Spaces

Emil Cornea<sup>\*</sup>, Hongtu Zhu<sup>\*,†</sup>, Peter Kim<sup>\*\*</sup>, and Joseph G. Ibrahim<sup>\*</sup> for the Alzheimers Disease Neuroimaging Initiative

<sup>\*</sup>Department of Biostatistics, University of North Carolina at Chapel Hill, Chapel Hill, North Carolina, USA

<sup>\*\*</sup>Department of Mathematics and Statistics, University of Guelph, Guelph, Ontario, Canada

### Summary

The aim of this paper is to develop a general regression framework for the analysis of manifold-valued response in a Riemannian symmetric space (RSS) and its association with multiple covariates of interest, such as age or gender, in Euclidean space. Such RSS-valued data arises frequently in medical imaging, surface modeling, and computer vision, among many others. We develop an intrinsic regression model solely based on an intrinsic conditional moment assumption, avoiding specifying any parametric distribution in RSS. We propose various link functions to map from the Euclidean space of multiple covariates to the RSS of responses. We develop a two-stage procedure to calculate the parameter estimates and determine their asymptotic distributions. We construct the Wald and geodesic test statistics to test hypotheses of unknown parameters. We systematically investigate the geometric invariant property of these estimates and test statistics. Simulation studies and a real data analysis are used to evaluate the finite sample properties of our methods.

### Keywords

Generalized method of moment; Group action; Geodesic; Lie group; Link function; Regression; RS space

## 1. Introduction

Manifold-valued responses in curved spaces frequently arise in many disciplines including medical imaging, computational biology, and computer vision, among many others. For instance, in medical and molecular imaging, it is interesting to delineate the changes in the shape and anatomy of a molecule. See Figure 1 for four different examples of manifold-valued data. Regression analysis is a fundamental statistical tool for relating a response variable to covariate, such as age. In particular, when both the response and the covariate(s)

<sup>†</sup>Address for correspondence and reprints: Hongtu Zhu, Ph.D., Department of Biostatistics, Gillings School of Global Public Health, University of North Carolina at Chapel Hill, Chapel Hill, NC 27599-7420, USA. hzhu@bios.unc.edu.

Data used in preparation of this article were obtained from the Alzheimer's Disease Neuroimaging Initiative (ADNI) database. As such, the investigators within the ADNI contributed to the design and implementation of ADNI and/or provided data but did not participate in analysis or writing of this paper. A complete listing of ADNI investigators can be found at: [http://adni.loni.usc.edu/wp-content/uploads/how\\_to\\_apply/ADNI\\_Acknowledgement\\_List.pdf](http://adni.loni.usc.edu/wp-content/uploads/how_to_apply/ADNI_Acknowledgement_List.pdf).

are in Euclidean space, the classical linear regression model and its variants have been widely used in various fields (McCullagh and A. Nelder, 1989). However, when the response is in a Riemannian symmetric space (RSS) and the covariates are in Euclidean space, developing regression models for this type of data raises both computational and theoretical challenges. The aim of this paper is to develop a general regression framework to address these challenges.

Little has been done on the regression analyses of manifold-valued response data. The existing statistical methods for general manifold-valued data are primarily developed to characterize the population ‘mean’ and ‘variation’ across groups (Bhattacharya and Patrangenaru, 2003, 2005; Fletcher et al., 2004; Dryden and Mardia, 1998; Huckemann et al., 2010). In contrast, even for the ‘simplest’ directional data, there is a sparse literature on regression modeling of a single directional response and multiple covariates (Mardia and Jupp, 2000). In addition, these regression models of directional data are primarily based on a specific parametric distribution, such as the von Mises-Fisher distribution (Mardia and Jupp, 2000; Kent, 1982). However, it can be very challenging to assume useful parametric distributions for general manifold-valued data, and thus it is difficult to generalize these regression models of directional data to general manifold-valued data except for some specific manifolds (Shi et al., 2012; Fletcher, 2013; Kim et al., 2014; Shi et al., 2009; Zhu et al., 2009). There is also a great interest in developing nonparametric regression models for manifold-valued response data and multiple covariates (Bhattacharya and Dunson, 2010, 2012; Samir et al., 2012; Su et al., 2012; Muralidharan and Fletcher, 2012; Machado and Leite, 2006; Machado et al., 2010; Yuan et al., 2012).

An intriguing question is whether there is a general regression framework for manifold-valued response in a RSS and covariates in a multidimensional Euclidean space. The aim of this paper is to give an affirmative answer to such a question. The theoretical development is challenging but of great interest for carrying out statistical inferences on regression coefficients. We make five major contributions in this paper as follows: (i) We propose an intrinsic regression model solely based on an intrinsic conditional moment for the response in a RSS, thus avoiding specifying any parametric distributions in a general RSS - the model can handle multiple covariates in Euclidean space. (ii) We develop several ‘efficient’ estimation methods for estimating the regression coefficients in this intrinsic model. (iii) We develop several test statistics for testing linear hypotheses of the regression coefficients. (iv) We develop a general asymptotic framework for the estimates of the regression coefficients and test statistics. (v) We systematically investigate the geometrical properties (e.g., chart invariance) of these parameter estimates and test statistics.

The paper is organized as follows. In Section 2, we review the basic notion and concepts of Riemannian geometry. In Section 3, we propose the intrinsic regression models and propose various link functions for several specific RSS’s. In Section 4, we develop estimation and test procedures for the intrinsic regression models. In Section 5, we carry out a detailed data analysis on the shape of Corpus Callosum (CC) contours obtained from the Alzheimer’s Disease Neuroimaging Initiative (ADNI) study. Finally, we conclude with some discussions in Section 6. Technical conditions, simulation studies, theoretical examples, and proofs are

deferred to the Supplementary document. Our code and data are available from <http://www.bios.unc.edu/research/bias>.

## 2. Differential Geometry Preliminaries

We briefly review some basic facts about the theory of Riemannian geometry and present more technical details in the Supplementary Report. The reader can refer to (Helgason, 1978; Spivak, 1979; Lang, 1999) for more details.

Let  $\mathcal{M}$  be a smooth manifold and  $d_{\mathcal{M}}$  be its dimension. A tangent vector of  $\mathcal{M}$  at  $p \in \mathcal{M}$  is defined as the derivative of a smooth curve  $\gamma(t)$  with respect to  $t$  evaluated at  $t=0$ , denoted as  $\dot{\gamma}(0)$ , where  $\gamma(0) = p$ . The tangent space of  $\mathcal{M}$  at  $p$  is denoted as  $T_p\mathcal{M}$  and is the set of all tangent vectors at  $p$ .

A Riemannian manifold  $(\mathcal{M}, m)$  is a smooth manifold together with a family of inner products,  $m = \{m_p\}$ , on the tangent spaces  $T_p\mathcal{M}$ 's that vary smoothly with  $p \in \mathcal{M}$ , and  $m$  is called a Riemannian metric. This metric induces a so-called *geodesic distance*  $\text{dist}_{\mathcal{M}}$  on  $\mathcal{M}$ . The geodesics are, by definition, the locally distance-minimizing paths. If the metric space  $(\mathcal{M}, \text{dist}_{\mathcal{M}})$  is complete, the *exponential map* at  $p$  is defined on the tangent space  $T_p\mathcal{M}$  by

$\text{Exp}_p^{\mathcal{M}}(V) = \gamma(1; p, V)$ , where  $t \mapsto \gamma(t; p, V)$  is the geodesic with  $\gamma(0; p, V) = p$  and  $\dot{\gamma}(0; p, V) = V$ .  $\text{Exp}_p^{\mathcal{M}}$  is well-defined near  $\mathbf{0}$  and is a diffeomorphism on an open neighborhood  $\mathcal{V}$  of the origin in  $T_p\mathcal{M}$  onto  $\mathcal{U}$  with  $\mathcal{V}$  such that  $tV \in \mathcal{V}$  for  $0 \leq t \leq 1$  and  $V \in \mathcal{V}$ . The inverse map is the *logarithmic map* at  $p$ , denoted by  $\text{Log}_p^{\mathcal{M}}$ . Then, for  $q \in \mathcal{U}$ ,

$\text{dist}_{\mathcal{M}}(p, q) = \|\text{Log}_p^{\mathcal{M}}(q)\|_p$ . The *radius of injectivity* of  $\mathcal{M}$  at  $p$ , denoted by  $\rho^*(\mathcal{M}, p)$ , is the largest  $r > 0$  such that  $\text{Exp}_p^{\mathcal{M}}$  is a diffeomorphism on the open ball  $B_{m_p}(\mathbf{0}, r) \subset T_p\mathcal{M}$  onto an open set in  $\mathcal{M}$  near  $p$ . Any basis in the tangent space  $T_p\mathcal{M}$  induces an isomorphism from  $T_p\mathcal{M}$  to  $\mathbb{R}^{d_{\mathcal{M}}}$ , and then the logarithmic map  $\text{Log}_p$  provides a local chart near  $p$ . If  $T_p\mathcal{M}$  is endowed with an orthonormal basis, such a chart is called a *normal chart* and the coordinates are called *normal coordinates*.

A Lie group  $G$  is a group together with a smooth manifold structure such that the operations of multiplication and inversion are smooth maps. Many common geometric transformations of Euclidean spaces that form Lie groups include rotations, translations, dilations, and affine transformations on  $\mathbb{R}^d$ . In general, Lie groups can be used to describe transformations of smooth manifolds.

An RSS is a connected Riemannian manifold  $\mathcal{M}$  with the property that at each point, the mapping that reverses geodesics through that point is an isometry. Examples of RSS's include Euclidean spaces,  $\mathbb{R}^k$ , spheres,  $S^k$ , projective spaces,  $PR^k$ , and hyperbolic spaces,  $H^k$ , each with their standard Riemannian metrics. Symmetric spaces arise naturally from Lie group actions on manifolds, see Helgason (1978). Given a smooth manifold  $\mathcal{M}$  and a Lie group  $G$ , a *smooth group action of  $G$  on  $\mathcal{M}$*  is a smooth mapping  $G \times \mathcal{M} \rightarrow \mathcal{M}$ ,  $(a, p) \mapsto a \cdot p$  such that  $e \cdot p = p$  and  $(aa') \cdot p = a \cdot (a' \cdot p)$  for all  $a, a' \in G$  and all  $p \in \mathcal{M}$ . The group action should be interpreted as a group of transformations of the manifold  $\mathcal{M}$ , namely,  $\{L_a\}_{a \in G}$ ,  $L_a(p) = a \cdot p$  for  $p \in \mathcal{M}$ . The  $L_a$  is a smooth transformation on  $\mathcal{M}$  and its inverse is

$L_a^{-1}$ . The *orbit* of a point  $p \in \mathcal{M}$  is defined as  $G(p) = \{a \cdot p \mid a \in G\}$ . The orbits form a partition of  $\mathcal{M}$ . If  $\mathcal{M}$  consists of a single orbit, the group action is *transitive* or  $G$  acts *transitively* on  $\mathcal{M}$ , and we call  $\mathcal{M}$  a *homogeneous* space. The *isotropy* subgroup of a point  $p \in \mathcal{M}$  is defined as  $G_p = \{a \in G \mid a \cdot p = p\}$ . When  $G$  is a connected group of isometries of the RSS  $\mathcal{M}$ ,  $\mathcal{M}$  can always be viewed as a homogeneous space,  $\mathcal{M} \cong G/G_p$ , and the isotropy subgroup  $G_p$  is compact.

From now on, we will assume that the manifold  $\mathcal{M}$  is an RSS and  $\mathcal{M} = G/G_p$  with  $G$  being a Lie group of isometries acting transitively on  $\mathcal{M}$ . Geodesics on  $\mathcal{M}$  are computed through the action of  $G$  on  $\mathcal{M}$ . Due to the transitive action of the group  $G$  of isometries on  $\mathcal{M}$ , it suffices to consider only the geodesic starting at the base point  $p$ . Geodesics on  $\mathcal{M}$  starting from  $p$  are the images of the action of a 1-parameter subgroup of  $G$  acting on the base point  $p$ . That is, for any geodesic  $\gamma$  on  $\mathcal{M}$ ,  $\gamma(\cdot) : R \rightarrow \mathcal{M}$ , starting from  $p$ , there exists a 1-parameter subgroup  $\alpha(\cdot) : R \rightarrow G$  such that  $\gamma(t) = \alpha(t) \cdot p$  for all  $t \in R$ .

### 3. Intrinsic Regression Model

Let  $(\mathcal{M}, m)$  be a  $(C^\infty)$  RSS of dimension  $d_{\mathcal{M}}$  and geodesically complete with an inner product  $m_p$  and let  $G$  be a Lie group of isometries acting smoothly and transitively on  $\mathcal{M}$  with the identity element  $e$ .

#### 3.1. Formulation

Consider  $n$  independent observations  $(y_1, \mathbf{x}_1), \dots, (y_n, \mathbf{x}_n)$ , where  $y_i$  is the  $\mathcal{M}$ -valued response variable and  $\mathbf{x}_i = (x_{i1}, \dots, x_{id_{\mathbf{x}}})^T$  is a  $d_{\mathbf{x}} \times 1$  vector of multiple covariates. Our objective is to introduce an intrinsic regression model for RSS responses and multiple covariates of interest from  $n$  subjects.

The specification of the intrinsic regression model involves three key steps including (i) a link function mapping from the space of covariates to  $\mathcal{M}$ , (ii) the definition of a residual, and (iii) the action of transporting all residuals to a common space. First, we explicitly formalize the link function. From now on, all covariates have been centered to have mean zero. We consider a single-center link function given by

$$\mu(\mathbf{x}, q, \boldsymbol{\beta}) : R^{d_{\mathbf{x}}} \times \mathcal{M} \times R^{d_{\boldsymbol{\beta}}} \rightarrow \mathcal{M}, \quad (1)$$

where  $\mu(\mathbf{x}, q, \boldsymbol{\beta})$  is a known link function,  $q \in \mathcal{M}$  can be regarded as the intercept or center, and  $\boldsymbol{\beta} = (\beta_1, \dots, \beta_{d_{\boldsymbol{\beta}}})^T$  is a  $d_{\boldsymbol{\beta}} \times 1$  vector of regression coefficients. Moreover, it is assumed that  $\mu(\mathbf{x}, q, \boldsymbol{\beta})$  satisfies a single-center property as follows:

$$\mu(\mathbf{0}, q, \boldsymbol{\beta}) = \mu(\mathbf{x}, q, \mathbf{0}) = q. \quad (2)$$

When the regression coefficient vector  $\boldsymbol{\beta}$  equals  $\mathbf{0}$ , the link function is independent of the covariates and thus, it reduces to the single center (or ‘mean’)  $q \in \mathcal{M}$ . When all the covariates are equal to zero, the link function is independent of the regression coefficients

and reduces to the center  $q \in \mathcal{M}$ . An example of the single-center link function is the geodesic link function in (Kim et al., 2014; Fletcher, 2013), which is given by

$$\boldsymbol{\mu}(\mathbf{x}, q, \boldsymbol{\beta}) = \text{Exp}_q^{\mathcal{M}} \left( \sum_{k=1}^{d_{\mathbf{x}}} x_{ik} V_k \right). \quad (3)$$

where  $V_k$ 's are tangent vectors in  $T_q \mathcal{M}$  and  $\boldsymbol{\beta}$  includes all unknown parameters associated with the tangent vectors.

More generally, we will consider a multicenter link function to account for the presence of multiple discrete covariates and even a general link function defined as  $\boldsymbol{\mu}(\mathbf{x}, \boldsymbol{\theta}) : \mathcal{R}^{d_{\mathbf{x}}} \times \Theta \rightarrow \mathcal{M}$ , where  $\boldsymbol{\theta}$  is a vector of unknown parameters in a parameter space  $\Theta$ . For the multicenter link function,  $\boldsymbol{\theta}$  contains all unknown intercepts, denoted as  $q(\mathbf{x}_D)$ , corresponding to each discrete covariate class and all regression parameters  $\boldsymbol{\beta}$  corresponding to continuous covariates and their potential interactions with the discrete variables. However, the details on these link functions are presented in the Supplementary document, and here, for notational simplicity, we focus on (1) from now on.

Second, we introduce a definition of ‘residual’ to ensure that  $\boldsymbol{\mu}(\mathbf{x}_i, q, \boldsymbol{\beta})$  is the proper ‘conditional mean’ of  $y_i$  given  $\mathbf{x}_i$ , which is the key concept of many regression models (McCullagh and A. Nelder, 1989). For instance, in the classical linear regression model, the response can be written as the sum of the regression function and a residual term and the regression function is the conditional mean of the response only when the conditional mean of the residual is equal to zero. Given the points  $y_i$  and  $\boldsymbol{\mu}(\mathbf{x}_i, q, \boldsymbol{\beta})$  on a RSS  $\mathcal{M}$ , we need to define the residual as ‘a difference’ between  $y_i$  and  $\boldsymbol{\mu}(\mathbf{x}_i, q, \boldsymbol{\beta})$ . Assume that  $y_i$  and  $\boldsymbol{\mu}(\mathbf{x}_i, q, \boldsymbol{\beta})$  are ‘close enough’ to each other in the sense that there is an open ball  $B(0, \rho) \subset T_{\boldsymbol{\mu}(\mathbf{x}_i, q, \boldsymbol{\beta})} \mathcal{M}$  such that for all  $i = 1, \dots, n$ ,

$$y_i \in \text{Exp}_{\boldsymbol{\mu}(\mathbf{x}_i, q, \boldsymbol{\beta})} (B(0, \rho)) \text{ or } \text{Log}_{\boldsymbol{\mu}(\mathbf{x}_i, q, \boldsymbol{\beta})} (y_i) \subset B(0, \rho). \quad (4)$$

However, according to a result in Le and Barden (2014),  $\text{Log}_{\boldsymbol{\mu}(\mathbf{x}_i, q, \boldsymbol{\beta})} (y_i)$  is well defined under some very mild conditions, which require that  $\int_{\mathcal{M}} \text{dist}_{\mathcal{M}}(p, y_i)^2 d\rho(y_i)$  be finite and achieve a local minimum at  $\boldsymbol{\mu}(\mathbf{x}_i, q, \boldsymbol{\beta})$ , where  $\rho(y_i)$  is any finite measure of  $y_i$  on  $\mathcal{M}$ . Thus,  $\text{Log}_{\boldsymbol{\mu}(\mathbf{x}_i, q, \boldsymbol{\beta})} (y_i)$  makes it a good candidate to play the role of a ‘residual’. These residuals, however, lie on different tangent spaces to  $\mathcal{M}$ , so it is difficult to carry out a multivariate analysis of these residuals.

Third, since  $\mathcal{M}$  is a RSS, this enables us to ‘transport’ all the residuals, separately, to a common space, say  $T_p \mathcal{M}$ , by exploiting the fact that the parallel transport along the geodesics can be expressed in terms of the action of  $G$  on  $\mathcal{M}$ . Indeed, since  $\mathcal{M}$  is a symmetric space, the base point  $p$  and the point  $\boldsymbol{\mu}(\mathbf{x}_i, q, \boldsymbol{\beta})$  can be joined in  $\mathcal{M}$  by a geodesic, which can

be seen as the action of a one-parameter subgroup  $\alpha(t; \mathbf{x}_j, q, \boldsymbol{\beta})$  of  $G$  such that  $\alpha(1; \mathbf{x}_j, q, \boldsymbol{\beta}) \cdot p = \boldsymbol{\mu}(\mathbf{x}_j, q, \boldsymbol{\beta})$ .

We define the *rotated residual*  $\mathcal{E}(y_i; \mathbf{x}_i, q, \boldsymbol{\beta})$  of  $y_i \in \mathcal{M}$  with respect to  $\boldsymbol{\mu}(\mathbf{x}_i, q, \boldsymbol{\beta})$  as the parallel transport of the actual residual,  $\text{Log}_{\boldsymbol{\mu}(\mathbf{x}_i, q, \boldsymbol{\beta})}(y_i)$ , along the geodesic from the conditional mean,  $\boldsymbol{\mu}(\mathbf{x}_i, q, \boldsymbol{\beta})$ , to the base point  $p$ . That is,

$$\mathcal{E}(y_i, \mathbf{x}_i; q, \boldsymbol{\beta}) = \mathcal{E}_i(q, \boldsymbol{\beta}) := \text{Log}_p \left( \alpha(1; \mathbf{x}_i, q, \boldsymbol{\beta})^{-1} \cdot y_i \right) \in T_p M \quad (5)$$

for  $i = 1, \dots, n$ , where  $T_p \mathcal{M}$  is identified with  $R^d \mathcal{M}$ . The *intrinsic regression model* on  $\mathcal{M}$  is defined by

$$E[\mathcal{E}(y_i, \mathbf{x}_i; q_*, \boldsymbol{\beta}_*) | \mathbf{x}_i] = 0, \quad (6)$$

where  $(q_*, \boldsymbol{\beta}_*)$  denotes the true value of  $(q, \boldsymbol{\beta})$  and the expectation is taken with respect to the conditional distribution of  $y_i$  given  $\mathbf{x}_i$ . Model (6) is equivalent to  $E[\text{Log}_{\boldsymbol{\mu}(\mathbf{x}_i, q_*, \boldsymbol{\beta}_*)}(y_i) | \mathbf{x}_i] = 0$  for  $i = 1, \dots, n$ , since the tangent map of the action of  $\alpha(1; \mathbf{x}_i, q_*, \boldsymbol{\beta}_*)^{-1}$  on  $\mathcal{M}$  is an isomorphism of linear spaces (invariant under the metric  $m$ ) between the fibers of the tangent bundle  $T\mathcal{M}$ . This model does not assume any parametric distribution for  $y_i$  given  $\mathbf{x}_i$ , and thus it allows for a large class of distributions. The model is essentially semi-parametric, since the joint distribution of  $(y, \mathbf{x})$  is not restricted except by the zero conditional moment requirement in (6).

### 3.2. A Theoretical Example: The Unit Sphere $S^k$

We investigate the intrinsic regression model for  $S^k$ -valued responses and include several other examples in the supplementary document. We review some basic facts about the geometric structure of  $\mathcal{M} = S^k = \{x \in R^{k+1} : \|x\|_2 = 1\}$  (Shi et al., 2012; Mardia and Jupp, 2000; Healy and Kim, 1996; Huckemann et al., 2010). For  $q \in S^k$ ,  $T_q S^k$  is given by  $T_q S^k = \{v \in R^{k+1} : v^T q = 0\}$ . The canonical Riemannian metric on  $S^k$  is that induced by the canonical inner product on  $R^{k+1}$ . Under this metric, the geodesic distance between any two points  $q$  and  $q'$  is equal to  $\psi_{q, q'} = \arccos(q^T q')$ . If the points are not antipodal (i.e.  $q' \neq -q$ ), then there is a unique geodesic path that joins them. Therefore, the radius of injectivity is  $\rho(S^k) = \pi$ . For  $v \in T_q S^k$ , the Riemannian Exponential map is given by  $\text{Exp}_q(v) = \cos(\|v\|)q + \sin(\|v\|)v/\|v\|$ . (Here,  $\sin(0)/0 = 1$ .) If  $q$  and  $q'$  are not antipodal, the Riemannian Logarithmic map is given by  $\text{Log}_q(q') = \arccos(q^T q')v/\|v\|$ , where  $v = q' - (q^T q')q \neq 0$ .

The special orthogonal group  $G = \text{SO}(k+1)$  is a group of isometries on  $S^k$  and acts transitively and simply on  $S^k$  via the left matrix multiplication. Specifically, the rotation matrix  $R_{q, q'}$ , which rotates  $q$  to  $q' \in S^k$ , is given by

$$R_{q,q'} = \mathbf{I}_{k+1} + \sin(\psi_{q,q'}) \{q' \tilde{q}^T - \tilde{q} q'^T\} + \{\cos(\psi_{q,q'}) - 1\} \{q' q'^T + \tilde{q} \tilde{q}^T\},$$

where  $\tilde{q} = \{q - (q^T q')q'\} / \sqrt{1 - (q^T q')^2}$ . Thus,  $q' = R_{q,q'}q$  and  $R_{q,q'}v \in T_{q'}S^k$ , for any  $v \in T_qS^k$ . Moreover,  $(-\pi, \pi) \ni t \mapsto c_{q',q}(t) \cdot q'$  is the unique geodesic curve in  $S^k$  joining  $q'$  with  $q$ , where  $c_{q',q}(t)$  takes the form

$$c_{q',q}(t) = \mathbf{I}_{k+1} + \sin(t) \{\tilde{q} q'^T - q' \tilde{q}^T\} + \{\cos(t) - 1\} \{q' q'^T + \tilde{q} \tilde{q}^T\}.$$

Suppose that we observe  $\{(y_i, \mathbf{x}_i) : i = 1, \dots, n\}$ , where  $y_i \in S^k$  for all  $i$ . We introduce the three key components of our intrinsic regression model for  $S^k$ -valued responses. First, we consider several examples of the general link function  $\mu(\mathbf{x}_i, \theta)$ . Specifically, without loss of generality, we fix the “north pole”  $p = (0, \dots, 0, 1)^T \in R^{k+1}$  as a base point. Let  $\mathbf{e}_j$  be the  $(k+1) \times 1$  vector with a 1 at the  $j$ -th component and a 0 otherwise for  $j = 1, \dots, k$ . Let  $q \in S^k$  be the ‘center’, and we consider two link functions as follows:

$$\begin{aligned} \mu(\mathbf{x}_i, q, \beta) &= \text{Exp}_q \left( \sum_{j=1}^k f(\mathbf{x}_i, \beta)_j c_{p,q}(\arccos(p^T q)) \mathbf{e}_j \right), \\ \mu(\mathbf{x}_i, q, \beta) &= c_{-p,q}(\arccos(-p^T q)) (T_{st,-p}^{-1}((f(\mathbf{x}_i, \beta)^T, -1)^T)), \end{aligned} \quad (7)$$

where  $T_{st,-p}$  is the stereographic projection mapping from  $S^k \setminus \{p\}$  onto the  $d$ -dimensional hyperplane  $R^k \times \{-1\}$  and  $f(\mathbf{x}, \beta)$  is a function mapping from  $R^{d_x} \times R^{d_\beta}$  to  $R^k$  with  $f(\mathbf{0}, \cdot) = f(\cdot, \mathbf{0}) = \mathbf{0}$ . A simple example of  $f(\cdot, \cdot)$  is  $f(\mathbf{x}_i, \beta) = B\mathbf{x}_i$ , where  $B$  is a  $k \times d_x$  matrix of regression coefficients and  $\beta$  includes all components of  $B$ .

Second, we define residuals for our intrinsic regression model. The residual in (4) requires that  $y_i$  is not antipodal to  $\mu(\mathbf{x}_i, \theta)$ . In this case, the residual for the  $i$ -th subject is given by  $\text{Log}_{\mu(\mathbf{x}_i, \theta)}(y_i) = \arccos(\mu(\mathbf{x}_i, \theta)^T y_i) \mathbf{v}_i / \|\mathbf{v}_i\|$ , where  $\mathbf{v}_i = y_i - (\mu(\mathbf{x}_i, \theta)^T y_i) \mu(\mathbf{x}_i, \theta)$ . However, when  $y_i = -\mu(\mathbf{x}_i, \theta)$  holds, there is an infinite number of geodesics connecting  $\mu(\mathbf{x}_i, \theta)$  and  $y_i$ . In this case,  $\text{Log}_{\mu(\mathbf{x}_i, \theta)}(y_i)$  is not uniquely defined, whereas their geodesic distance is unique. However, according to the results in Le and Barden (2014),  $\text{Log}_{\mu(\mathbf{x}_i, q, \beta)}(y_i)$  is well defined almost surely.

Third, we transport all the residuals, separately, to a common space, say  $T_p S^k$ . The *rotated residual* is given by

$$\mathcal{E}(y_i, \mathbf{x}_i; \theta) = \text{Log}_p(c_{p, \mu(\mathbf{x}_i, \theta)}(-\arccos(p^T \mu(\mathbf{x}_i, \theta))) \cdot y_i). \quad (8)$$



Our *intrinsic regression model* is defined by the zero conditional mean assumption in (6) on the above rotated residuals (8). A graphic illustration of the stereographic link functions in (7), rotated residual, and parallel transport is given in Figure 2.

Alternatively, we may consider some parametric spherical regression models for spherical responses. As an illustration, we consider the von Mises-Fisher (vMF) regression model. Specifically, it is assumed that  $y_i | \mathbf{x}_i \sim \text{vMF}(\boldsymbol{\mu}(\mathbf{x}_i, \boldsymbol{\theta}), \kappa)$  or, equivalently,  $R_{\boldsymbol{\mu}(\mathbf{x}_i, \boldsymbol{\theta}), p} y_i | \mathbf{x}_i \sim \text{vMF}(p, \kappa)$ , for  $i = 1, \dots, n$ , where  $\kappa$  is a positive concentration parameter and is assumed to be known for simplicity. Calculating the maximum likelihood estimate of  $\boldsymbol{\theta}$  is equivalent to solving a score equation given by  $\sum_{i=1}^n y_i^T \partial_{\boldsymbol{\theta}} \boldsymbol{\mu}(\mathbf{x}_i, \boldsymbol{\theta}) = 0$ , where  $\partial_{\boldsymbol{\theta}} = \partial / \partial \boldsymbol{\theta}$ . Since  $\|\boldsymbol{\mu}(\mathbf{x}_i, \boldsymbol{\theta})\| = 1$  and  $\{\partial_{\boldsymbol{\theta}} \boldsymbol{\mu}(\mathbf{x}_i, \boldsymbol{\theta})\}^T \boldsymbol{\mu}(\mathbf{x}_i, \boldsymbol{\theta}) = 0$  for all subcomponents of  $\boldsymbol{\theta}$ , we have

$$y_i^T \partial_{\boldsymbol{\theta}} \boldsymbol{\mu}(\mathbf{x}_i, \boldsymbol{\theta}) = \sqrt{2} \frac{\sqrt{1 - (\boldsymbol{\mu}(\mathbf{x}_i, \boldsymbol{\theta})^T y_i)^2}}{\arccos(\boldsymbol{\mu}(\mathbf{x}_i, \boldsymbol{\theta})^T y_i)} \{R_{\boldsymbol{\mu}(\mathbf{x}_i, \boldsymbol{\theta}), p} \partial_{\boldsymbol{\theta}} \boldsymbol{\mu}(\mathbf{x}_i, \boldsymbol{\theta})\}^T \mathcal{E}(y_i, \mathbf{x}_i; \boldsymbol{\theta}), \tag{9}$$

which is a linear combination of the rotated residual.

## 4. Estimation and Test Procedures

### 4.1. Generalized Method of Moment Estimators

We consider the generalized method of moment estimator (GMM estimator) to estimate the unknown parameters in model (6) (Hansen, 1982; Newey, 1993; Korsholm, 1999). We may view the  $T_p \mathcal{M}$ -valued function  $\mathcal{E}$  as a function with values in  $R^{d_{\mathcal{M}}}$ . Let  $h(\mathbf{x}; \mathbf{q}, \boldsymbol{\beta})$  be a  $s \times d_{\mathcal{M}}$  matrix of functions of  $(\mathbf{x}, \mathbf{q}, \boldsymbol{\beta})$  with  $s \geq d_{\mathcal{M}} + d_{\boldsymbol{\beta}}$  and  $W_n$  be a random sequence of positive definite  $s \times s$  weight matrices. It follows from (6) that

$$E\{h(\mathbf{x}_i; \mathbf{q}_*, \boldsymbol{\beta}_*)\} E[\mathcal{E}(y_i, \mathbf{x}_i; \mathbf{q}_*, \boldsymbol{\beta}_*) | \mathbf{x}_i] = 0. \tag{10}$$

We define  $\mathcal{Q}_n(\mathbf{q}, \boldsymbol{\beta}) = [\mathbb{P}_n(h(\mathbf{x}; \mathbf{q}, \boldsymbol{\beta}) \mathcal{E}(y, \mathbf{x}; \mathbf{q}, \boldsymbol{\beta}))]^T W_n [\mathbb{P}_n(h(\mathbf{x}; \mathbf{q}, \boldsymbol{\beta}) \mathcal{E}(y, \mathbf{x}; \mathbf{q}, \boldsymbol{\beta}))]$ , where  $\mathbb{P}_n f(y, \mathbf{x}) = n^{-1} \sum_{i=1}^n f(y_i, \mathbf{x}_i)$  for a real-vector valued function  $f(y, \mathbf{x})$ . The GMM estimator  $(\hat{\mathbf{q}}_G, \hat{\boldsymbol{\beta}}_G)$ , or simply  $(\hat{\mathbf{q}}, \hat{\boldsymbol{\beta}})$ , of  $(\mathbf{q}, \boldsymbol{\beta})$  associated with  $(h(\cdot, \cdot, \cdot), W_n)$  is defined as

$$(\hat{\mathbf{q}}_G, \hat{\boldsymbol{\beta}}_G) = \underset{(\mathbf{q}, \boldsymbol{\beta}) \in M \times R^{d_{\boldsymbol{\beta}}}}{\text{argmin}} \mathcal{Q}_n(\mathbf{q}, \boldsymbol{\beta}). \tag{11}$$

Under some conditions detailed below, we can show the first order asymptotic properties of  $(\hat{\mathbf{q}}_G, \hat{\boldsymbol{\beta}}_G)$  including consistency and asymptotic normality of GMM-estimators. We introduce some notation. Let  $\|\cdot\|$  denote the Euclidean norm of a vector or a matrix;

$$\partial^l f(\mathbf{t}, \boldsymbol{\beta}) / \{\partial(\mathbf{t}, \boldsymbol{\beta})^l\} = \partial_{(\mathbf{t}, \boldsymbol{\beta})}^l f(\mathbf{t}, \boldsymbol{\beta}) \text{ for } l = 1, \dots; \mathbf{a}^{\otimes 2} = \mathbf{a} \mathbf{a}^T \text{ any matrix or vector } \mathbf{a}; V =$$



$\text{Var}[h(\mathbf{x}; q_*, \boldsymbol{\beta}_*) \mathcal{E}(y, \mathbf{x}; q_*, \boldsymbol{\beta}_*)]$ ;  $I_d$  is the identity matrix;  $\xrightarrow{d}$  and  $\xrightarrow{p}$ , respectively, denote convergence in distribution and in probability. We obtain the following results, whose detailed proofs can be found in the supplementary document.

**Theorem 4.1**—Assume that  $(y_i, \mathbf{x}_i)$ ,  $i = 1, \dots, n$ , are iid random variables in  $\mathcal{M} \times \mathcal{R}^{d_{\mathbf{x}}}$ . Let  $(q_*, \boldsymbol{\beta}_*)$  be the exact value of the parameters satisfying (6). Let  $\{W_n\}_n$  be a random sequence of  $s \times s$  symmetric positive semi-definite matrices with  $s \geq d_{\mathcal{M}} + d_{\boldsymbol{\beta}}$

- a. Under assumptions (C1)–(C5) in the Supplementary document,  $(\hat{q}_G, \hat{\boldsymbol{\beta}}_G)$  in (11) is consistent in probability as  $n \rightarrow \infty$ .
- b. Under assumptions (C1)–(C4) and (C6)–(C10) in the Supplementary document, for any local chart  $(U, \phi)$  on  $\mathcal{M}$  near  $q_*$  as  $n \rightarrow \infty$ , we have

$$\sqrt{n}[(\phi(\hat{q}_G)^T, \hat{\boldsymbol{\beta}}_G^T)^T - (\phi(q_*)^T, \boldsymbol{\beta}_*^T)^T] \xrightarrow{d} N_{d_{\mathcal{M}} + d_{\boldsymbol{\beta}}}(\mathbf{0}, \Sigma_{\phi}), \quad (12)$$

where  $\Sigma_{\phi} = (G_{\phi}^T W G_{\phi})^{-1} G_{\phi}^T W W G_{\phi} (G_{\phi}^T W G_{\phi})^{-1}$ , in which  $G_{\phi}$  is defined in (C9). Moreover, for any other chart  $(U, \phi')$  near  $q_*$ , we have

$$\Sigma_{\phi'} = \text{diag}(J(\phi' \circ \phi^{-1})_{\phi(q_*)}, I_{d_{\boldsymbol{\beta}}}) \Sigma_{\phi} \text{diag}(J(\phi' \circ \phi^{-1})_{\phi(q_*)}, I_{d_{\boldsymbol{\beta}}})^T, \quad (13)$$

where  $J(\cdot)_{\mathbf{t}}$  denotes the Jacobian matrix evaluated at  $\mathbf{t}$ .

Theorem 4.1 establishes the first-order asymptotic properties of  $(\hat{q}_G, \hat{\boldsymbol{\beta}}_G)$  for the intrinsic regression model (6). Theorem 4.1 (a) establishes the consistency of  $(\hat{q}_G, \hat{\boldsymbol{\beta}}_G)$ . The consistency result does not depend on the local chart. Theorem 4.1 (b) establishes the asymptotic normality of  $(\phi(\hat{q}_G), \hat{\boldsymbol{\beta}}_G)$  for a specific chart  $(U, \phi)$  and the relationship between the asymptotic covariances  $\Sigma_{\phi'}$  and  $\Sigma_{\phi}$  for two different charts. It follows from the lower-right  $d_{\boldsymbol{\beta}} \times d_{\boldsymbol{\beta}}$  submatrix of  $\Sigma_{\phi'}$  that the asymptotic covariance matrix of  $\hat{\boldsymbol{\beta}}$  does not depend on the chart. However, the asymptotic normality of  $\hat{q}_G$  does depend on a specific chart. A consistent estimator of the asymptotic covariance matrix  $\Sigma_{\phi}$  is given by

$$(\hat{G}_{\phi}^T W_n \hat{G}_{\phi})^{-1} \hat{G}_{\phi}^T W_n \hat{V} W_n \hat{G}_{\phi} (\hat{G}_{\phi}^T W_n \hat{G}_{\phi})^{-1} \text{ with } \hat{G}_{\phi} = n^{-1} \sum_{i=1}^n [h(\mathbf{x}_i; \hat{q}, \hat{\boldsymbol{\beta}}) \frac{\partial}{\partial(\mathbf{t}, \boldsymbol{\beta})} \mathcal{E}(y_i, \mathbf{x}_i; \phi^{-1}(\mathbf{t}), \hat{\boldsymbol{\beta}})|_{\mathbf{t}=\phi(\hat{q})}] \text{ and}$$

$$\hat{V} = n^{-1} \sum_{i=1}^n [h(\mathbf{x}_i; \hat{q}, \hat{\boldsymbol{\beta}}) \mathcal{E}(y_i, \mathbf{x}_i; \hat{q}, \hat{\boldsymbol{\beta}})]^{\otimes 2}.$$

This estimator is also compatible with the manifold structure of  $\mathcal{M}$ .

We consider the relationship between the GMM estimator and the *intrinsic least squares estimator* (ILSE) of  $(q, \beta)$ , denoted by  $(\hat{q}_I, \hat{\beta}_I)$ . The  $(\hat{q}_I, \hat{\beta}_I)$  minimizes the total residual sum of squares  $\mathcal{G}_{I,n}(q, \beta)$  as follows:

$$(\hat{q}_I, \hat{\beta}_I) = \underset{(q, \beta) \in M \times R^{d_\beta}}{\operatorname{argmin}} \mathcal{G}_{I,n}(q, \beta) = \underset{(q, \beta) \in M \times R^{d_\beta}}{\operatorname{argmin}} \sum_{i=1}^n \operatorname{dist}_{\mathcal{M}}(y_i, \mu(\mathbf{x}_i, q, \beta))^2. \quad (14)$$

According to (2), the ILSE is closely related to the intrinsic mean  $\hat{q}_{IM}$  of  $y_1, \dots, y_n \in \mathcal{M}$ , which is defined as

$$\hat{q}_{IM} = \underset{q \in M}{\operatorname{argmin}} \sum_{i=1}^n \operatorname{dist}_{\mathcal{M}}(y_i, q)^2 = \underset{q \in M}{\operatorname{argmin}} \sum_{i=1}^n \operatorname{dist}_{\mathcal{M}}(y_i, \mu(\mathbf{0}, q, \beta))^2.$$

Recall that  $\mu(\mathbf{0}, q, \beta)$  is independent of  $\beta$ .

The  $(\hat{q}_I, \hat{\beta}_I)$  can be regarded as a special case of the GMM estimator when we set  $W_n = I_{d_{\mathcal{M}} + d_\beta}$  and  $h$ 's rows  $h_j(\mathbf{x}, q, \beta) = (L_{\alpha(1; \mathbf{x}, q, \beta)}^{-1} * (\partial_{t_j} \mu(\mathbf{x}, \phi^{-1}(\mathbf{t}), \beta))|_{\mathbf{t}=\phi(q)})^T$  for  $j = 1, \dots, d_{\mathcal{M}}$ , and  $h_{d_{\mathcal{M}}+j}(\mathbf{x}, q, \beta) = (L_{\alpha(1; \mathbf{x}, q, \beta)}^{-1} * (\partial_{\beta_j} \mu(\mathbf{x}, q, \beta)))^T$  for  $j = 1, \dots, d_\beta$ , where  $(U, \phi)$  is a chart on  $\mathcal{M}$  and each row of  $h(\mathbf{x}, q, \beta)$  is in  $R^{1 \times d_{\mathcal{M}}}$  via the identification  $T_p \mathcal{M} \cong R^{d_{\mathcal{M}}}$  corresponding to  $(U, \phi)$ . It follows from Theorem 4.1 that under model (6),  $(\hat{q}_I, \hat{\beta}_I)$  enjoys the first-order asymptotic properties as well.

#### 4.2. Efficient GMM Estimator

We investigate the most efficient estimator in the class of GMM estimators. For a fixed  $h(\cdot; \cdot, \cdot)$ , the optimal choice of  $W$  is  $W^{opt} = V^{-1}$ , and the use of  $W_n = W^{opt}$  leads to the most efficient estimator in the class of all GMM estimators obtained using the same  $h(\cdot)$  function (Hansen, 1982). Its asymptotic covariance is given by  $(G_\phi V^{-1} G_\phi)^{-1}$ . An interesting question is what the optimal choice of  $h^{opt}(\cdot)$  is.

We first introduce some notation. For a chart  $(U, \phi)$  on  $\mathcal{M}$  near  $q_*$ , let

$$\begin{aligned} D_\phi(\mathbf{x}) &= E[\partial_{(\mathbf{t}, \beta)} \mathcal{E}(y, \mathbf{x}; \phi^{-1}(\mathbf{t}), \beta_*)|_{\mathbf{t}=\phi(q_*)} | \mathbf{x}]^T, & h_\phi^*(\mathbf{x}) &= D_\phi(\mathbf{x}) \Omega(\mathbf{x})^{-1}, \\ W_\phi^* &= E[D_\phi(\mathbf{x}) \Omega(\mathbf{x})^{-1} D_\phi(\mathbf{x})^T]^{-1}, & \Omega(\mathbf{x}) &= \operatorname{Var}(\mathcal{E}(y, \mathbf{x}; q_*, \beta_*) | \mathbf{x}). \end{aligned}$$

Let  $(\hat{q}^*, \hat{\beta}^*)$  be the GMM estimator of  $(q, \beta)$  based on  $h_\phi^*(\mathbf{x})$  and  $W_\phi^*$ . Generally, we obtain an optimal result of  $h^{opt}(\cdot)$ , which generalizes an existing result for Euclidean-valued responses and covariates (Newey, 1993), as follows.

**Theorem 4.2**—Suppose that (C2)–(C8) and (C10)–(C12) in the Supplementary document hold for  $h_\phi^*(\mathbf{x})$  and  $W_\phi^*$ . We have the following results:

- i.  $(\hat{q}^*, \hat{\beta}^*)$  is asymptotically normally distributed with mean  $\mathbf{0}$  and covariance  $W_\phi^*$ ;

- ii.  $(\hat{q}^*, \hat{\beta}^*)$  is optimal among all GMM estimators for model (6);
- iii.  $(\hat{q}^*, \hat{\beta}^*)$  is independent of the chart.

Theorem 4.2 characterizes the optimality of  $h_{\phi}^*(\mathbf{x})$  and  $W_{\phi}^*$  among regular GMM estimators for model (6). Geometrically,  $(\hat{q}^*, \hat{\beta}^*)$  is independent of the chart. Specifically, for any other chart  $(U, \phi')$  near  $q_*$ , we have

$$\begin{aligned} D_{\phi'}(\mathbf{x}) &= \text{diag}([J(\phi' \circ \phi^{-1})_{\phi(q_*)}]^{-1}, I_{d_{\beta}})^T D_{\phi}(\mathbf{x}), \\ h_{\phi'}^*(\mathbf{x}) &= \text{diag}([J(\phi' \circ \phi^{-1})_{\phi(q_*)}]^{-1}, I_{d_{\beta}})^T h_{\phi}^*(\mathbf{x}), \\ W_{\phi'}^* &= \text{diag}(J(\phi' \circ \phi^{-1})_{\phi(q_*)}, I_{d_{\beta}}) W_{\phi}^* \text{diag}(J(\phi' \circ \phi^{-1})_{\phi(q_*)}, I_{d_{\beta}})^T. \end{aligned}$$

Thus, the quadratic form in (11) associated with  $h_{\phi'}^*(\mathbf{x})$  and  $W_{\phi'}^*$  is the same as that which is associated with  $h_{\phi}^*(\mathbf{x})$  and  $W_{\phi}^*$ . It indicates that the GMM estimator  $(\hat{q}^*, \hat{\beta}^*)_{\phi}$  based on  $h_{\phi}^*(\mathbf{x})$  and  $W_{\phi}^*$  is independent of the chart  $(U, \phi)$ .

The next challenging issue is the estimation of  $D_{\phi}(\mathbf{x})$  and  $\Omega(\mathbf{x})$ . We may proceed in two steps. The first step is to calculate a  $\sqrt{n}$ -consistent estimator  $(\hat{q}_I, \hat{\beta}_I)$  of  $(q, \beta)$ , such as the ILSE. The second step is to plug  $(\hat{q}_I, \hat{\beta}_I)$  into the functions  $\mathcal{E}_{\phi}(\hat{q}_I, \hat{\beta}_I)$  and  $\partial_{(t, \beta)} \mathcal{E}(y_i, \mathbf{x}_i; \phi^{-1}(t), \hat{\beta}_I) |_{t=\phi(\hat{q}_I)}$  for all  $i$  and then use them to construct the nonparametric estimates of  $D_{\phi}(\mathbf{x})$  and  $\Omega(\mathbf{x})$  (Newey, 1993). Specifically, let  $K(\cdot)$  be a  $d_{\mathbf{x}}$ -dimensional kernel function of the  $l_0$ -th order satisfying  $\int K(u_1, \dots, u_{d_{\mathbf{x}}}) du_1 \dots du_{d_{\mathbf{x}}} = 1$ ,  $\int u_s^l K(u_1, \dots, u_{d_{\mathbf{x}}}) du_1 \dots du_{d_{\mathbf{x}}} = 0$  for any  $s = 1, \dots, d_{\mathbf{x}}$  and  $1 \leq l < l_0$ , and  $\int u_s^{l_0} K(u_1, \dots, u_{d_{\mathbf{x}}}) du_1 \dots du_{d_{\mathbf{x}}} \neq 0$ . Let  $K_{\tau}(u) = \tau^{-1} K(u/\tau)$ , where  $\tau > 0$  is a bandwidth. Then, a nonparametric estimator of  $D_{\phi}(\mathbf{x})$  can be written by

$$\hat{D}_{\phi}(\mathbf{x})^T = \sum_{i=1}^n \omega_i(\mathbf{x}; \tau) \partial_{(t, \beta)} \mathcal{E}(y_i, \mathbf{x}_i; \phi^{-1}(t), \hat{\beta}_I) |_{t=\phi(\hat{q}_I)}, \quad (15)$$

where  $\omega_i(\mathbf{x}; \tau) = K_{\tau}(\mathbf{x} - \mathbf{x}_i) / \{\sum_{k=1}^n K_{\tau}(\mathbf{x} - \mathbf{x}_k)\}$ . Although we may construct a nonparametric estimator of  $\Omega(\mathbf{x})$  similar to (15), we have found that even for moderate  $d_{\mathbf{x}}$ , such an estimator is numerically unstable. Instead, we approximate  $\Omega(\mathbf{x}_j) = \text{Var}(\mathcal{E}(y, \mathbf{x}; q_*, \beta_*) | \mathbf{x} = \mathbf{x}_j)$  by its mean  $V_{E^*} = \text{Var}(\mathcal{E}(y, \mathbf{x}; q_*, \beta_*))$ . In this case,  $h_{\phi}^*(\mathbf{x})$  and  $W_{\phi}^*$ , respectively, reduce to

$$h_{E, \phi}^*(\mathbf{x}) = D_{\phi}(\mathbf{x}) V_{E^*}^{-1} \text{ and } W_{E, \phi}^* = \{E[D_{\phi}(\mathbf{x}) V_{E^*}^{-1} \Omega(\mathbf{x}) V_{E^*}^{-1} D_{\phi}(\mathbf{x})^T]\}^{-1}. \quad (16)$$

For any local chart  $(U, \phi)$  with  $\hat{q}_I \in U$ , we construct the estimators of  $h_{E, \phi}^*$  and  $W_{E, \phi}^*$  as follows. Let  $\hat{V}(q, \beta) = P_{\mu} \mathcal{E}(y, \mathbf{x}; q, \beta)^{\otimes 2}$ , we have

$$\hat{h}_{E,\phi}(\mathbf{x}_i) = \hat{D}_\phi(\mathbf{x}_i) \hat{V}(\hat{q}_I, \hat{\beta}_I)^{-1}, \hat{W}_{E,\phi} = \left\{ \mathbb{P}_n [\hat{h}_{E,\phi}(\mathbf{x}) \mathcal{E}(y, \mathbf{x}; \hat{q}_I, \hat{\beta}_I)]^{\otimes 2} \right\}^{-1}. \quad (17)$$

Then, we substitute  $\hat{h}_{E,\phi}$  and  $\hat{W}_{E,\phi}$  into (11) and then calculate the GMM estimator of  $(q, \beta)$ , denoted by  $(\hat{q}_E, \hat{\beta}_E)$ . Similar to  $(\hat{q}^*, \hat{\beta}^*)$ , it can be shown that  $(\hat{q}_E, \hat{\beta}_E)$  is independent of the chart  $(U, \phi)$  on  $\mathcal{M}$  near  $q^*$  with  $\hat{q}_I \in U$ . For sufficiently large  $n$ ,  $\text{dist}_{\mathcal{M}}(\hat{q}_I, q^*)$  can be made sufficiently small and any maximal normal chart on  $\mathcal{M}$  centered at  $\hat{q}_I$  contains the true value  $q^*$  with probability approaching one.

We calculate a one-step linearized estimator of  $(q, \beta)$ , denoted by  $(\tilde{q}_E, \tilde{\beta}_E)$ , to approximate  $(\hat{q}_E, \hat{\beta}_E)$ . Computationally, the linearized estimator does not require iteration, whereas, theoretically, it shares the first asymptotic properties with  $(\hat{q}_E, \hat{\beta}_E)$  as shown below. Specifically, in the chart  $(U, \phi)$  near  $\hat{q}_I$ , we have

$$\begin{pmatrix} \tilde{\mathbf{t}}_{E,\phi}^T \\ \tilde{\beta}_{E,\phi}^T \end{pmatrix} - (\phi(\hat{q}_I)^T, \hat{\beta}_I^T)^T = \left\{ -\mathbb{P}_n [\hat{h}_{E,\phi}(\mathbf{x}) \partial_{(\mathbf{t}, \beta)} \mathcal{E}(y, \mathbf{x}; \phi^{-1}(t), \hat{\beta}_I) |_{\mathbf{t}=\phi(\hat{q}_I)}] \right\}^{-1} \mathbb{P}_n [\hat{h}_{E,\phi}(\mathbf{x}) \mathcal{E}_i(y, \mathbf{x}; \hat{q}_I, \hat{\beta}_I)]. \quad (18)$$

Furthermore, if  $(U', \phi')$  is another chart on  $\mathcal{M}$  near  $\hat{q}_I$ , then we have

$$\begin{pmatrix} \tilde{\mathbf{t}}_{E,\phi'}^T \\ \tilde{\beta}_{E,\phi'}^T \end{pmatrix} - (\phi'(\hat{q}_I)^T, \hat{\beta}_I^T)^T = \begin{pmatrix} J_{\phi(\hat{q}_I)}(\phi' \circ \phi^{-1}) & 0 \\ 0 & I_{d_\beta} \end{pmatrix} \left[ \begin{pmatrix} \tilde{\mathbf{t}}_{E,\phi}^T \\ \tilde{\beta}_{E,\phi}^T \end{pmatrix} - (\phi(\hat{q}_I)^T, \hat{\beta}_I^T)^T \right].$$

Thus,  $\tilde{\beta}_{E,\phi}$  is independent of the chart  $\phi$  and  $\{\tilde{\mathbf{t}}_{E,\phi} - \phi(\hat{q}_I) / \phi\}$  defines a unique tangent vector to  $\mathcal{M}$  at  $\hat{q}_I$ . Moreover, if  $\phi$  and  $\phi'$  are maximal normal charts centered at  $\hat{q}_I$ , then  $\gamma_\phi(\tau) = \phi^{-1}(\tilde{\mathbf{t}}_{E,\phi})$  and  $\gamma_{\phi'}(\tau) = \phi'^{-1}(\tilde{\mathbf{t}}_{E,\phi'})$  are two geodesic curves on  $\mathcal{M}$  starting from the same point  $\hat{q}_I$  with the same initial velocity vector, and thus these two geodesics coincide. Therefore,  $\phi^{-1}(\tilde{\mathbf{t}}_{E,\phi})$  is independent of the normal chart  $\phi$  centered at  $\hat{q}_I$ . Finally, we can establish the first order asymptotic properties of  $(\tilde{q}_E, \tilde{\beta}_E)$  as follows.

**Theorem 4.3**—Assume that (C2)–(C11) and (C13)–(C18) are valid. As  $n \rightarrow \infty$ , we have the following results:

$$\sqrt{n} [(\phi(\tilde{q}_E)^T, \tilde{\beta}_E^T)^T - (\phi(q^*)^T, \beta_*^T)^T] \xrightarrow{d} N_{d_{\mathcal{M}} + d_\beta}(\mathbf{0}, \Sigma_{E,\phi}), \quad (19)$$

where  $\Sigma_{E,\phi} = (G_{\phi, h^*_{E,\phi}} \ W_{E,\phi}^* \ G_{\phi, h^*_{E,\phi}})^{-1}$ . In addition,  $\Sigma_{E,\phi}$  is invariant under the change of coordinates in  $\mathcal{M}$  and the asymptotic distribution of  $\tilde{\beta}_E$  does not depend on the chart  $(U, \phi)$ . Also, if we set

$$\begin{aligned} \hat{\Sigma}_{E,\phi} = & n^{-1} \left\{ \mathbb{P}_n[\hat{D}_\phi(\mathbf{x})\hat{V}(\hat{q}_I, \hat{\beta}_I)^{-1}\hat{D}_\phi(\mathbf{x})^T] \right\}^{-1} \\ & \times \left\{ \mathbb{P}_n[\hat{D}_\phi(\mathbf{x})\hat{V}(\hat{q}_I, \hat{\beta}_I)^{-1}\mathcal{E}(y, \mathbf{x}, \hat{q}_I, \hat{\beta}_I)^{\otimes 2}\hat{V}(\hat{q}_I, \hat{\beta}_I)^{-1}\hat{D}_\phi(\mathbf{x})^T] \right\} \\ & \times \left\{ \mathbb{P}_n[\hat{D}_\phi(\mathbf{x})\hat{V}(\hat{q}_I, \hat{\beta}_I)^{-1}\hat{D}_\phi(\mathbf{x})^T] \right\}^{-1}, \end{aligned} \tag{20}$$

then  $n\hat{\Sigma}_{E,\phi}$  is a consistent estimator of  $\Sigma_{E,\phi}$ , i.e.  $n\hat{\Sigma}_{E,\phi} \xrightarrow{p} \Sigma_{E,\phi}$ . This estimator is also compatible with the manifold structure of  $\mathcal{M}$ .

Theorem 4.3 establishes the first-order asymptotic properties of  $(\hat{q}_E, \hat{\beta}_E)$ . If  $\Omega(\mathbf{x}) = \Omega$  for a constant matrix  $\Omega$ , then it follows from Theorems 4.2 and 4.3 that  $(\hat{q}_E, \hat{\beta}_E)$  is optimal. If  $\Omega(\mathbf{x})$  does not vary dramatically as a function of  $\mathbf{x}$ , then  $(\hat{q}_E, \hat{\beta}_E)$  is nearly optimal. If  $\Omega(\mathbf{x})$  varies dramatically as a function of  $\mathbf{x}$ , one can replace  $\hat{V}(\hat{q}_I, \hat{\beta}_I)$  in (17) by  $\hat{\Omega}(\mathbf{x}_i)$  to obtain  $\hat{h}_{E,\phi}(\mathbf{x}) = \hat{D}_\phi(\mathbf{x})\hat{\Omega}(\mathbf{x})^{-1}$  and  $\hat{W}_{E,\phi} = \{\mathbb{P}_n[\hat{h}_{E,\phi}(\mathbf{x})\mathcal{E}(y, \mathbf{x}; \hat{q}_I, \hat{\beta}_I)]^{\otimes 2}\}^{-1}$ , where  $\hat{\Omega}(\mathbf{x}_i)$  is a consistent estimator of  $\Omega(\mathbf{x}_i)$  for all  $i$ , then the optimality of  $(\hat{q}_E, \hat{\beta}_E)$  still holds. We have the following theorem.

**Theorem 4.4**—Assume that (C2)–(C17) and (C19) are valid. Then, as  $n \rightarrow \infty$ , we have

$$\sqrt{n} [(\phi(\hat{q}_E)^T, \hat{\beta}_E^T)^T - (\phi(q_*)^T, \beta_*^T)^T] \xrightarrow{d} N_{d_{\mathcal{M}} + d_\beta}(\mathbf{0}, \Sigma_\phi^*), \tag{21}$$

in which  $\Sigma_\phi^*$  is given in Theorem 4.2. If we set  $\hat{\Sigma}_{E,\phi} = n^{-1} \{\mathbb{P}_n[\hat{D}_\phi(\mathbf{x})\hat{\Omega}(\mathbf{x})^{-1}\hat{D}_\phi(\mathbf{x})^T]\}^{-1}$ , then  $n\hat{\Sigma}_{E,\phi}$  is a consistent estimator of  $\Sigma_\phi^*$ .

### 4.3. Computational Algorithm

Computationally, an annealing evolutionary stochastic approximation Monte Carlo (SAMC) algorithm (Liang et al., 2010) is developed to compute  $(\hat{q}_I, \hat{\beta}_I)$  and  $(\hat{q}_E, \hat{\beta}_E)$ . See the supplementary document for details. Although some gradient-based optimization methods, such as the quasi-Newton method, have been used to optimize  $\mathcal{Q}_n(q, \beta)$  (Kim et al., 2014; Fletcher, 2013), we have found that these methods strongly depend on the starting value of  $(q, \beta)$ . Specifically, when  $\mathcal{E}(y, \mathbf{x}; q, \beta)$  takes a relatively complicated form,  $\mathcal{Q}_n(q, \beta)$  is generally not convex and can easily converge to local minima. Moreover, we have found that it can be statistically misleading to carry out statistical inference, such as the estimated standard errors of  $(\hat{q}_E, \hat{\beta}_E)$ , at those local minima. The annealing evolutionary SAMC algorithm converges fast and distinguishes from many gradient-based algorithms, since it possesses a nice feature in that the moves are self-adjustable and thus not likely to get trapped by local energy minima. The annealing evolutionary SAMC algorithm (Liang et al., 2010) represents a further improvement of stochastic approximation Monte Carlo for optimization problems by incorporating some features of simulated annealing and the genetic algorithm into its search process.

### 4.4. Hypotheses Testing

Many scientific questions involve the comparison of the  $\mathcal{M}$ -valued data across groups and subjects and the detection of the change in the  $\mathcal{M}$ -valued data over time. Such questions usually can be formulated as testing the hypotheses of  $q$  and  $\beta$ . We consider two types of hypotheses as follows:

$$H_0^{(1)}:C_0\beta=\mathbf{b}_0 \quad \text{vs.} \quad H_1^{(1)}:C_0\beta \neq \mathbf{b}_0, \quad (22)$$

$$H_0^{(2)}:q=q_0 \quad \text{vs.} \quad H_1^{(2)}:q \neq q_0. \quad (23)$$

where  $C_0$  is an  $r \times d_\beta$  matrix of full row rank and  $q_0$  and  $\mathbf{b}_0$  are specified in  $\mathcal{M}$  and  $R^r$ , respectively. Further extensions of these hypotheses are definitely interesting and possible. For instance, for the multicenter link function, we may be interested in testing whether all intercepts are independent of the discrete covariate class.

We develop several test statistics for testing the hypotheses given in (22) and (23). First, we consider the Wald test statistic for testing  $H_0^{(1)}$  against  $H_1^{(1)}$  in (22), which is given by

$$W_{n,\phi}^{(1)}=(C_0\tilde{\beta}_E-\mathbf{b}_0)^T \left[ C_0 \sum_{E,\phi;22} \hat{C}_0^T \right]^{-1} (C_0\tilde{\beta}_E-\mathbf{b}_0),$$

where  $\hat{\Sigma}_{E,\phi}$  is given in Theorem 4.3 or Theorem 4.4, and  $\hat{\Sigma}_{E,\phi;22}$  is its lower-right  $d_\beta \times d_\beta$  submatrix. Since  $\tilde{\beta}_E$  and its asymptotic covariance matrix are independent of the chart on  $\mathcal{M}$ , the test statistic  $W_{n,\phi}^{(1)}$  is independent of the chart.

Second, we consider the Wald test statistic for testing the hypotheses given in (23) when there is a local chart  $(U, \phi)$  on  $\mathcal{M}$  containing both  $\hat{q}_E$  and  $q_0$ . Specifically, the Wald test statistic for testing (23) is defined by

$$W_{n,\phi}^{(2)}=(\phi(\hat{q}_E)-\phi(q_0))^T \left[ (I_{d_{\mathcal{M}}} \mathbf{0}) \sum_{E,\phi} (I_{d_{\mathcal{M}}} \mathbf{0})^T \right]^{-1} (\phi(\hat{q}_E)-\phi(q_0)).$$

Third, we develop an intrinsic Wald test statistic, that is independent of the chart, for testing the hypotheses given in (23). We consider the asymptotic covariance estimator  $\hat{\Sigma}_{E,\phi}$  based on  $\tilde{q}_E$  and its upper-left  $d_{\mathcal{M}} \times d_{\mathcal{M}}$  submatrix  $\hat{\Sigma}_{E,\phi;11}$ . Since both are compatible with the manifold structure of  $\mathcal{M}$ ,  $\hat{\Sigma}_{E,\phi;11}$  defines a unique non-degenerate linear map  $\hat{\Sigma}_{E,11}(\cdot)$  from the tangent space  $T_{\tilde{q}_E}\mathcal{M}$  of  $\mathcal{M}$  at  $\tilde{q}_E$  onto itself, which is independent of the chart  $(U, \phi)$ . In a maximal normal chart centered at  $\tilde{q}_E$ , then in any such normal chart, the Wald test statistic for testing (23) is given by

$$W_{\mathcal{M},n}^{(2)} = m_{\tilde{q}_E} \left( \left( \sum_{E:11} \right)^{-1} (\text{Log}_{\tilde{q}_E} q_0), \text{Log}_{\tilde{q}_E} q_0 \right).$$

We obtain the asymptotic null distributions of  $W_{n,\phi}^{(1)}$ ,  $W_{n,\phi}^{(2)}$ , and  $W_{\mathcal{M},n}^{(2)}$  as follows.

**Theorem 4.5**—Let  $(U, \phi)$  be a local chart on  $\mathcal{M}$  so that  $\tilde{q}_E, q_* \in U$ . Assume that all conditions in Theorem 4.3 hold. Under the corresponding null hypothesis, we have the following results:

- i.  $W_{n,\phi}^{(1)}$  and  $W_{n,\phi}^{(2)}$  are asymptotically distributed as  $\chi_r^2$  and  $\chi_{d_{\mathcal{M}}}^2$  respectively;
- ii.  $W_{n,\phi}^{(1)}$  is independent of the chart  $(U, \phi)$ ;
- iii.  $W_{n,\phi'}^{(2)} = W_{n,\phi}^{(2)} + o_p(1)$ , for any other local chart  $(U, \phi')$  with  $\tilde{q}_E$  and  $q_0$  in  $U$ ;
- iv.  $W_{n,\phi}^{(2)} = W_{\mathcal{M},n}^{(2)}$ , for any normal chart  $(U, \phi)$  centered at  $\tilde{q}_E$ .

Theorem 4.5 has several important implications. Theorem 4.5 (i) characterizes the asymptotic null distributions of  $W_{n,\phi}^{(1)}$  and  $W_{n,\phi}^{(2)}$ . Theorem 4.5 (ii) shows that  $W_{n,\phi}^{(1)}$  does not depend the choice of the chart  $(U, \phi)$  on  $\mathcal{M}$ . Theorem 4.5 (iii) shows that  $W_{n,\phi'}^{(2)}$  and  $W_{n,\phi}^{(2)}$  are asymptotically equivalent for any two local charts. Theorem 4.5 (iv) shows that  $W_{n,\phi}^{(2)}$  can be used to construct an intrinsic test statistic.

We consider a local alternative framework for (22) and (23) as follows:

$$H_0^{(1)}: C_0 \beta = \mathbf{b}_0 \quad \text{vs.} \quad H_{1,n}^{(1)}: C_0 \beta = \mathbf{b}_0 + \delta / \sqrt{n} + o(1/\sqrt{n}), \quad (24)$$

$$H_0^{(2)}: q = q_0 \quad \text{vs.} \quad H_{1,n}^{(2)}: q = \text{Exp}_{q_0}(\mathbf{v} / \sqrt{n} + o(1/\sqrt{n})), \quad (25)$$

where  $\delta$  and  $\mathbf{v}$  are specified (and fixed) in  $R^r$  and  $T_{q_0}\mathcal{M}$ , respectively, and we establish the asymptotic distributions of  $W_{n,\phi}^{(1)}$ ,  $W_{n,\phi}^{(2)}$  and  $W_{\mathcal{M},n}^{(2)}$  under these local alternatives.

**Theorem 4.6**—Let  $(U, \phi)$  be a local chart on  $\mathcal{M}$  so that  $\tilde{q}_E, q_* \in U$ . Assume that all conditions in Theorem 4.3 hold. Under the local alternatives (24) and (25), we have the following results:

- i. Under  $H_{1,n}^{(1)}$ ,  $W_{n,\phi}^{(1)}$  is asymptotically distributed as noncentral  $\chi_r^2$  with noncentrality parameter  $\delta^T \left[ C_0 \sum_{E,\phi:22} C_0^T \right]^{-1} \delta$ .



- ii. Under  $H_{1,n}^{(2)}$ ,  $W_{n,\phi}^{(2)}$  is asymptotically distributed as noncentral  $\chi_{d_{\mathcal{M}}}^2$  with noncentrality parameter  $\mathcal{J}(\phi \circ \text{Exp}_{q_0})_0(\mathbf{v})^T [\hat{\Sigma}_{E,\phi,11}]^{-1} \mathcal{J}(\phi \circ \text{Exp}_{q_0})_0(\mathbf{v})$ . The noncentrality parameter does not depend on the choice of the coordinate system at  $q_0$ . Here,  $\mathcal{J}(f)_a$  denotes the Jacobian matrix of map  $f$  at  $a$ .
- iii. Under  $H_{1,n}^{(2)}$ ,  $W_{n,\phi}^{(2)}$  is asymptotically distributed as noncentral  $\chi_{d_{\mathcal{M}}}^2$  with noncentrality parameter  $m_{\tilde{q}_E}(\hat{\Sigma}_{E,11})^{-1}(\mathcal{J}(\text{Log}_{\tilde{q}_E} q_0)(\mathbf{v}))$ ,  $(\mathcal{J}(\text{Log}_{\tilde{q}_E} q_0)(\mathbf{v}))$ . The noncentrality parameter does not depend on the choice of the coordinate systems at  $\tilde{q}_E$  and  $q_0$ , respectively.

We consider another scenario that there are no local charts on  $\mathcal{M}$  containing both  $\tilde{q}_E$  and  $q_0$ . In this case, we restate the hypotheses  $H_0^{(2)}$  and  $H_1^{(2)}$  as follows:

$$H_0^{(2)}: \text{dist}_{\mathcal{M}}(q, q_0) = 0 \quad \text{vs.} \quad H_1^{(2)}: \text{dist}_{\mathcal{M}}(q, q_0) \neq 0. \quad (26)$$

We propose a geodesic test statistic given by

$$W_{dist} = \text{dist}_{\mathcal{M}}(\tilde{q}_E, q_0)^2 \quad (27)$$

which is independent of the chart  $(U, \phi)$ . Theoretically, we can establish the asymptotic distribution of  $W_{dist}$  under both the null and alternative hypotheses as follows.

**Theorem 4.7**—Assume that all conditions in Theorem 4.5 hold.

- a. Under  $H_0^{(2)}$ ,  $nW_{dist}$  is asymptotically weighted chi-square  $\chi^2(\lambda_1, \dots, \lambda_{d_{\mathcal{M}}})$  distributed, where the weights  $\lambda_1, \dots, \lambda_{d_{\mathcal{M}}}$  are the eigenvalues of the matrix  $\Sigma_{E, \text{Log}_{q_0, 11}}$ , which is the upper-left  $d_{\mathcal{M}} \times d_{\mathcal{M}}$  submatrix of the asymptotic covariance matrix  $\Sigma_{E, \text{Log}_{q_0}}$  of  $\tilde{q}_E$  in a normal chart centered at  $q_0$ . Moreover, the weights are independent, up to a permutation, of the choice of the normal chart centered at  $q_*$ .
- b. Under the alternative hypothesis,  $W_{dist}$  is asymptotically normal distributed and we have

$$\sqrt{n}(W_{dist} - \text{dist}_{\mathcal{M}}(q_*, q_0)^2) \xrightarrow{d} N_{d_{\mathcal{M}}}(\mathbf{0}, D_{dist}^T \sum_{E, \text{Log}_{q_*}, 11} D_{dist}).$$

where  $D_{dist}$  is the column vector representation of  $\text{grad}_{q_*}(\text{dist}(\cdot, q_0)^2)$  with respect to the orthonormal basis of  $T_{q_*}\mathcal{M}$  associated with the normal chart used to represent the asymptotic covariance of  $\tilde{q}_E$  as the matrix  $\Sigma_{E, \text{Log}_{q_*}}$ . In particular, when  $q_0$  is close to  $q_*$ , then

$$\sqrt{n}(W_{dist} - dist_{\mathcal{M}}(q_*, q_0))^2 \xrightarrow{d} N_{d_{\mathcal{M}}}(\mathbf{0}, 4[\text{Log}_{q_*} q_0]^T \sum_{E, \text{Log}_{q_*}, 11} [\text{Log}_{q_*} q_0]).$$

Theorem 4.7 establishes the asymptotic distribution of  $W_{dist}$  when  $\bar{q}_E$  and  $q_0$  do not belong to the same chart of  $\mathcal{M}$ . In practice, the covariance matrix  $\Sigma_{E, \text{Log}_{q_*}, 11}$  is not available, since  $\Sigma_{E, \text{Log}_{q_*}}$  is not known; it also depends on the unknown true value  $\beta_*$ , so we may use the estimate  $\hat{\Sigma}_{E, \text{Log}_{q_*}}$  as defined in Theorems 4.3 and 4.4. Therefore, under the null hypothesis, the asymptotic distribution of  $W_{dist}$  can be approximated by the weighted chi-square distribution  $\chi^2(\hat{\lambda}_1, \dots, \hat{\lambda}_{d_{\mathcal{M}}})$ , in which the weights  $\hat{\lambda}_1, \dots, \hat{\lambda}_{d_{\mathcal{M}}}$  are the eigenvalues of the covariance matrix  $(\hat{\Sigma}_{E, \text{Log}_{q_0}})_{11}/n$ .

Finally, we develop a score test statistic for testing  $H_0^{(2)}$  against  $H_1^{(2)}$ . An advantage of using the score test statistic is that it avoids the calculation of an estimator under the alternative hypothesis  $H_1^{(2)}$ . For notational simplicity, we only consider the ILSE estimator of  $(q, \beta)$ , denoted by  $(q_0, \hat{\beta})$ , under the null hypothesis  $H_0^{(2)}$ . For any chart  $(U, \phi)$  on  $\mathcal{M}$  with  $q_0 \in U$ , we define

$$F_{\phi i} = (F_{\phi i,1}^\top, F_{\phi i,2}^\top)^\top = \partial_{(\mathbf{t}, \beta)} \text{dist}_{\mathcal{M}}(f(\mathbf{x}_i, \phi^{-1}(\mathbf{t}), \beta), y_i)^2 \Big|_{\mathbf{t}=\phi(q_0), \hat{\beta}},$$

$$U_{\phi} = \begin{pmatrix} U_{\mathbf{t}\mathbf{t}} & U_{\mathbf{t}\beta} \\ U_{\beta\mathbf{t}} & U_{\beta\beta} \end{pmatrix} = \sum_{i=1}^n \partial_{(\mathbf{t}, \beta)}^2 \text{dist}_{\mathcal{M}}(f(\mathbf{x}_i, \phi^{-1}(\mathbf{t}), \beta), y_i)^2 \Big|_{\mathbf{t}=\phi(q_0), \hat{\beta}},$$

where the subcomponents  $F_{\phi i,1}$  and  $F_{\phi i,2}$  correspond to  $\mathbf{t}$  and  $\beta$ , respectively. It can be shown that the score test  $W_{SC, \phi}$  reduces to

$$W_{SC, \phi} = \left( \sum_{i=1}^n F_{\phi i,1} \right)^\top \tilde{\Sigma}_{\phi, q}^{-1} \left( \sum_{i=1}^n F_{\phi i,1} \right), \tag{28}$$

where  $\tilde{\Sigma}_{\phi, q} = (I_{d_{\mathcal{M}}}, -U_{\mathbf{t}\beta} U_{\beta\beta}^{-1}) \left[ \sum_{i=1}^n (F_{\phi i} - \bar{F}_{\phi})^{\otimes 2} \right] (I_{d_{\mathcal{M}}}, -U_{\mathbf{t}\beta} U_{\beta\beta}^{-1})^\top$ , in which  $\bar{F}_{\phi} = n^{-1} \sum_{i=1}^n F_{\phi i}$ . Theoretically, we can establish the asymptotic distribution of  $W_{SC, \phi}$  under the null hypothesis.

**Theorem 4.8**—Assume that all conditions in Theorem 4.5 hold. We have the following results:

- i. For any suitable local chart  $(U, \phi)$ , the score test statistic  $W_{SC, \phi}$  is asymptotically distributed as  $\chi_{d_{\mathcal{M}}}^2$  under the null hypothesis  $H_0^{(2)}$ .
- ii. Under  $H_0^{(2)}$ , for any other local chart  $(U, \phi')$  with  $q_0 \in U$ , we have

$$W_{SC,\phi'} = W_{SC,\phi}.$$

## 5. Real Data Example

### 5.1. ADNI Corpus Callosum Shape Data

Alzheimer disease (AD) is a disorder of cognitive and behavioral impairment that markedly interferes with social and occupational functioning. It is an irreversible, progressive brain disease that slowly destroys memory and thinking skills, and eventually even the ability to carry out the simplest tasks. AD affects almost 50% of those over the age of 85 and is the sixth leading cause of death in the United States.

The corpus callosum (CC), as the largest white matter structure in the brain, connects the left and right cerebral hemispheres and facilitates homotopic and heterotopic interhemispheric communication. It has been a structure of high interest in many neuroimaging studies of neuro-developmental pathology. Individual differences in CC and their possible implications regarding interhemispheric connectivity have been investigated over the last several decades (Paul et al., 2007).

We consider the CC contour data obtained from the ADNI study. For each subject in ADNI dataset, the segmentation of the T1-weighted MRI and the calculation of the intracranial volume were done in the *FreeSurfer* package<sup>‡</sup> (Dale et al., 1999), while the midsagittal CC area was calculated in the *CCseg* package, which is measured by using subdivisions in Witelson (1989) motivated by neuro-histological studies. Finally, each T1-weighted MRI image and tissue segmentation were used as the input files of *CCSeg* package to extract the planar CC shape data.

### 5.2. Intrinsic Regression Models

We are interested in characterizing the change of the CC contour shape as a function of three covariates including gender, age, and AD diagnosis. We focused on  $n = 409$  subjects with 223 healthy controls (HCs) and 186 AD patients at baseline of the ADNI1 database. We observed a CC planar contour  $Y_i$  with 32 landmarks and three clinical variables including gender  $x_{i,1}$  (0-female, 1-male), age  $x_{i,2}$ , and diagnosis  $x_{i,3}$  (0-control, 1-AD) for  $i = 1, \dots, 409$ . The demographic info is presented in Table 1.

We treat the CC planar contour  $Y_i$  as a RSS-valued response in the Kendall's planar shape space  $\sum_2^{32}$ . The geometric structure of  $\sum_2^k$  for  $k > 2$  is included in the supplementary document. Each  $Y_i$  is specified as a  $32 \times 2$  real matrix, whose rows represent the planar coordinates of 32 landmarks on  $y_i$ . Moreover,  $Y_i = (Y_{i,1} \ Y_{i,2})$  can be represented as a complex vector  $z_i = Y_{i,1} + jY_{i,2}$  in  $C^{32}$ , where  $j = \sqrt{-1}$  and  $C$  is the standard complex space. After removing the translations and normalizing to the unit 2-norm, each contour  $Y_i$  can be view as an element  $z_i \in \mathcal{D}^{32} = \{z = (z^1, \dots, z^{32})^T \in C^{32} \mid \sum_{m=1}^{32} z^m = 0 \text{ and } \|z\|_2 = 1\}$ . Then,

<sup>‡</sup><http://surfer.nmr.mgh.harvard.edu/>

after removing the 2-dimensional rotations, we obtain an element  $y_i = [z_i]$  in Kendall's planar shape space,  $\sum_2^{32} = \mathcal{D}^{32}/S^1$ , which has dimension 30 and is identified with the complex projective space  $CP^{30}$ .

In order to use our intrinsic regression model, we determined the base point  $p$  and an orthonormal basis  $\{Z_1, \dots, Z_{30}\}$  for  $T_p \sum_2^{32}$  as follows. We initially set  $p_0 = [z_0]$  with  $z_0 = (1, -1, 0, \dots, 0)^T / \sqrt{2}$  and an orthonormal basis  $\{\tilde{Z}_1, \dots, \tilde{Z}_{30}\}$  in  $T_{p_0} \sum_2^{32}$ , where  $\tilde{Z}_l = (1, \dots, 1, -(l+1), 0, \dots, 0)^T / \sqrt{(l+1)(l+2)}$ . Then, we projected all  $y_i$ 's onto  $T_{p_0} \sum_2^{32}$  and calculated  $\text{Log}_{p_0}(y_i)$  for all  $i$ . Finally, we set the base point  $p$  as  $\text{Exp}_{p_0}(n^{-1} \sum_{i=1}^n \text{Log}_{p_0}(y_i))$  and then used the parallel transport to rotate the initial basis  $\{\tilde{Z}_1, \dots, \tilde{Z}_{30}\}$  to obtain a new orthonormal basis  $\{Z_1, \dots, Z_{30}\}$  at  $p$ .

We consider an intrinsic regression model with  $y_i \in \sum_2^{32}$  as a response vector and a vector of four covariates including *gender*, *age*, *diagnosis*, and the interaction *age\*diagnosis*, that is,  $\mathbf{x}_i = (x_{i,1}, x_{i,2}, x_{i,3}, x_{i,4})^T$  with  $x_{i,4} = x_{i,2}x_{i,3}$ . We used a single-center link function with model parameters  $(q, \beta) \in \sum_2^{32} \times R^{240}$  as follow. The intercept  $q$  is specified by  $q = \phi_p^{-1}(\mathbf{t}) = \text{Exp}_p(\sum_{\ell=1}^{30} (t_{2\ell-1} + jt_{2\ell})Z_\ell)$ , where  $\mathbf{t} = (t_1, \dots, t_{60})^T \in R^{60}$ . The regression coefficient vector  $\beta$  includes four  $60 \times 1$  subvectors including  $\beta^{(g)}$ ,  $\beta^{(a)}$ ,  $\beta^{(d)}$ , and  $\beta^{(ad)}$ , which correspond to  $x_{i,1}$ ,  $x_{i,2}$ ,  $x_{i,3}$ , and  $x_{i,4}$ , respectively. Therefore, there are 300 unknown parameters in  $(\mathbf{t}^T, \beta^T)^T$ . We define a  $30 \times 4$  complex matrix as  $B = B_o + jB_e$  with  $B_o = \begin{pmatrix} \beta_o^{(g)} & \beta_o^{(a)} & \beta_o^{(d)} & \beta_o^{(ad)} \end{pmatrix}$ ,  $B_e = \begin{pmatrix} \beta_e^{(g)} & \beta_e^{(a)} & \beta_e^{(d)} & \beta_e^{(ad)} \end{pmatrix} \in R^{30 \times 4}$ , where  $\beta_o^{(\cdot)}$  and  $\beta_e^{(\cdot)}$  are the subvectors of  $\beta^{(\cdot)}$  formed by the odd-indexed and even-indexed components, respectively, and a link function by  $\mu(\mathbf{x}_i, q, \beta) = \text{Exp}_q([U_{p,q}Z_1, \dots, U_{p,q}Z_{30}]B\mathbf{x}_i) \in \sum_2^{32}$ , where  $U_{q_1, q_2} \mathbf{v} = U_{z_{q_1}, z_{q_2}^*} \mathbf{v}$ , with  $q_1 = [z_{q_1}]$ ,  $q_2 = [z_{q_2}]$ ,  $z_{q_2}^* = e^{j\theta^*} z_{q_2}$  the optimal rotational alignment of  $z_{q_2}$  to  $z_{q_1}$ , given by  $\bar{z}_{q_2}^T z_{q_1} = e^{j\theta^*} |\bar{z}_{q_2}^T z_{q_1}|$ , and  $U_{z_1, z_2} \mathbf{v}$  for any  $\mathbf{v} \in C^k$  takes the form of

$$\mathbf{v} - (\bar{z}_1^T \mathbf{v})z_1 - (\bar{z}_2^T \mathbf{v})z_2 + \{(\bar{z}_1^T z_2)(\bar{z}_1^T \mathbf{v}) - \sqrt{1 - |\bar{z}_1^T z_2|^2}(\bar{z}_2^T \mathbf{v})\}z_1 + \{\sqrt{1 - |\bar{z}_1^T z_2|^2}(\bar{z}_1^T \mathbf{v}) + (\bar{z}_1^T z_2)(\bar{z}_2^T \mathbf{v})\}z_2,$$

in which  $\tilde{z}_2 = \{z_2 - (\bar{z}_1^T z_2)z_1\} / \sqrt{1 - |\bar{z}_1^T z_2|^2}$ , for  $z_1, z_2 \in \mathcal{D}^{32}$ . Finally, our intrinsic model is defined by  $E \left[ \text{Log}_p \left( \bar{U}_{p, \mu(\mathbf{x}_i, q, \beta)}^T y_i \right) | \mathbf{x}_i \right] = 0$ , for  $i = 1, \dots, 409$ .

### 5.3. Results

We first calculated  $(\hat{q}_I, \hat{\beta}_I) = (\phi_p^{-1}(\hat{\mathbf{t}}_I), \hat{\beta}_I)$  in (14) and  $(\hat{q}_E, \hat{\beta}_E) = (\phi_p^{-1}(\hat{\mathbf{t}}_E), \hat{\beta}_E)$  in (18). The intercept estimates  $\hat{q}_I$  and  $\hat{q}_E$  are very close to each other with  $\text{dist}_{\sum_2^{32}}(\hat{q}_I, \hat{q}_E) < 0.0005$ .

Second, we compared the efficiency gain in the estimates of  $\beta$ . The estimates  $\hat{\beta}_I$  and  $\hat{\beta}_E$  of regression coefficients and their standard deviations are displayed in Figure 3(a) & (b). The efficiency gain in Stage II is measured by the relative reduction in the variances of  $\hat{\beta}_E$  relative to those of  $\hat{\beta}_I$ , which is shown in Figure 3(c). There is an average variance relative reduction of about 16.77% across all parameters in  $\beta$ . There is an average variance relative reduction of about 12.25% for parameters in  $\beta^{(ad)}$ , whereas there is an average relative reduction of 19.98% for parameters in  $\beta^{(g)}$ .

Third, we assessed whether there is an age $\times$ diagnosis interaction effect on the shape of the CC contour or not. We tested  $H_0 : \beta^{(ad)} = \mathbf{0}_{60}$  versus  $H_1 : \beta^{(ad)} \neq \mathbf{0}_{60}$ . The Wald test statistic equals  $W_{n,\phi}^{(1)} = 98.20$  with its  $p$ -value around 0.001. Thus, the data contains enough evidence to reject  $H_0$ , indicating that there is a strong age dependent diagnosis effect on the shape of the CC contours. The mean age-dependent CC trajectories for HCs and ADs within each gender group are shown in Figure 4. It can be observed that there is a difference in shape along the inner side of the posterior splenium and isthmus subregions in both male and female groups. The splenium seems to be less rounded and the isthmus is thinner in subjects with AD than in HCs.

Fourth, we assessed whether there is a gender effect on the shape of the CC contour or not.

We tested  $H_0 : \beta^{(g)} = \mathbf{0}_{60}$  versus  $H_1 : \beta^{(g)} \neq \mathbf{0}_{60}$ . The Wald test statistic is  $W_{n,\phi}^{(1)} = 73.34$  with its  $p$ -value 0.116. Thus, it is not significant at the 0.05 level of significance. It may indicate that there is no gender effect on the shape of the CC contours. The mean age-dependent CC trajectories for the female and male groups within each diagnosis group are shown in Figure 5. We observed similar shapes of CC contours in males and females.

## 6. Discussion

We have developed a general statistical framework for intrinsic regression models of responses valued in a Riemannian symmetric space in general, and Lie groups in particular, and their association with a set of covariates in a Euclidean space. The intrinsic regression models are based on the generalized method of moment estimator and therefore the models avoid any parametric assumptions regarding the distribution of the manifold-valued responses. We also proposed a large class of link functions to map Euclidean covariates to the manifold of responses. Essentially, the covariates are first mapped to the tangent bundle to the Riemannian manifold, and from there further mapped, via the manifold exponential map, to the manifold itself. We have adapted an annealing evolutionary stochastic algorithm to search for the ILSE,  $(\hat{q}_I, \hat{\beta}_I)$ , of  $(q, \beta)$ , in the Stage I of the estimation process, and a one-step procedure to search for the efficient estimator  $(\tilde{q}_E, \tilde{\beta}_E)$  in Stage II. Our simulation study and real data analysis demonstrate that the relative efficiency of the Stage II estimator improves as the sample size increases.

## Supplementary Material

Refer to Web version on PubMed Central for supplementary material.

## Acknowledgments

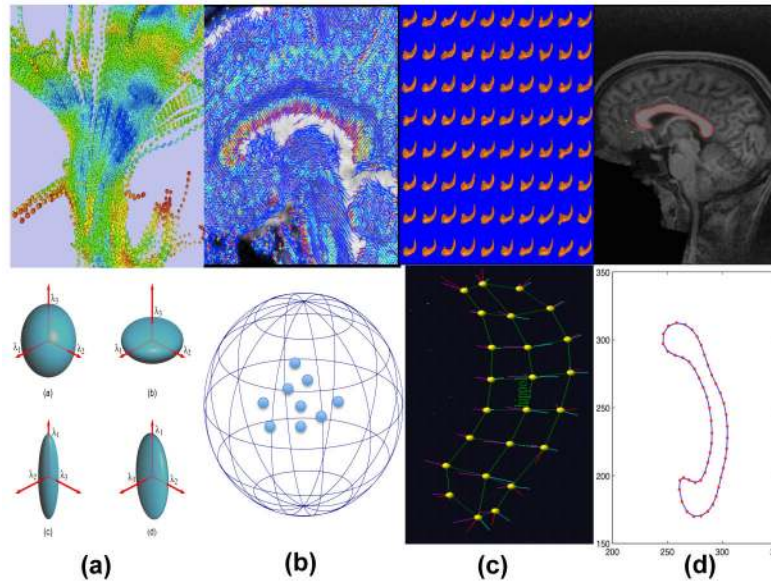
We thank the Editor, an Associate Editor, two referees, and Professor Huiling Le for valuable suggestions, which helped to improve our presentation greatly. We also thank Dr. Chao Huang and Mr. Yuai Hua for processing the ADNI CC shape data set. This work was supported in part by National Science Foundation grants and National Institute of Health grants.

## References

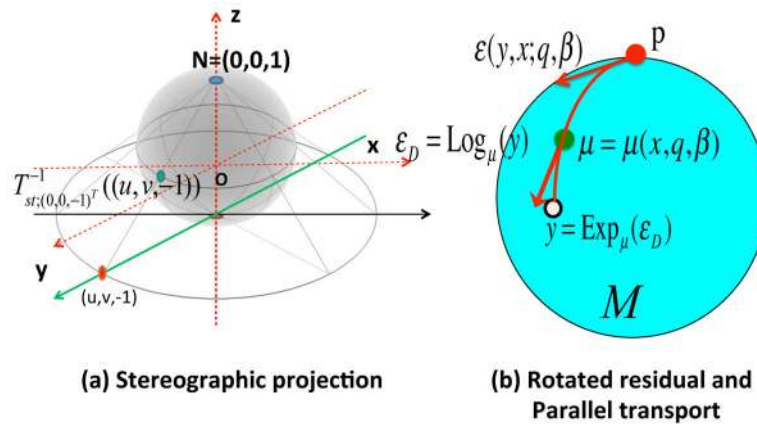
- Bhattacharya A, Dunson D. Nonparametric Bayes classification and hypothesis testing on manifolds. *Journal of Multivariate Analysis*. 2012; 111:1–19. [PubMed: 22754028]
- Bhattacharya A, Dunson DB. Nonparametric Bayesian density estimation on manifolds with applications to planar shapes. *Biometrika*. 2010; 97(4):851–865. [PubMed: 22822255]
- Bhattacharya R, Patrangenaru V. Large sample theory of intrinsic and extrinsic sample means on manifolds. I. *Ann Statist*. 2003; 31(1):1–29.
- Bhattacharya R, Patrangenaru V. Large sample theory of intrinsic and extrinsic sample means on manifolds. II. *Ann Statist*. 2005; 33(3):1225–1259.
- Dale AM, Fischl B, Sereno MI. Cortical surface-based analysis: I. segmentation and surface reconstruction. *Neuroimage*. 1999; 9(2):179–194. [PubMed: 9931268]
- Dryden, IL., Mardia, KV. *Statistical Shape Analysis*. Chichester: John Wiley & Sons Ltd; 1998.
- Fletcher PT. Geodesic regression and the theory of least squares on Riemannian manifolds. *International Journal of Computer Vision*. 2013; 105(2):171–185.
- Fletcher PT, Lu C, Pizer S, Joshi S. Principal geodesic analysis for the study of nonlinear statistics of shape. *Medical Imaging, IEEE Transactions on*. 2004; 23(8):995–1005.
- Hansen LP. Large sample properties of generalized method of moments estimators. *Econometrica*. 1982; 50:1029–1054.
- Healy DMJ, Kim PT. An empirical Bayes approach to directional data and efficient computation on the sphere. *Ann Statist*. 1996; 24(1):232–254.
- Helgason, S. *Differential Geometry, Lie Groups, and Symmetric Spaces*, Volume 80 of Pure and Applied Mathematics. New York, NY: Academic Press Inc; 1978.
- Huckemann S, Hotz T, Munk A. Intrinsic manova for Riemannian manifolds with an application to Kendall's space of planar shapes. *IEEE Trans Patt Anal Mach Intell*. 2010; 32:593–603.
- Kent JT. The Fisher-Bingham distribution on the sphere. *J Roy Statist Soc Ser B*. 1982; 44(1):71–80.
- Kim, HJ., Adluru, N., Collions, MD., Chung, MK., Bendlin, BB., Johnson, SC., Davidson, RJ., Singh, V. Multivariate general linear models (mgm) on Riemannian manifolds with applications to statistical analysis of diffusion weighted images. *IEEE Annual Conference on Computer Vision and Pattern Recognition*; 2014. p. 2705-2712.
- Korsholm, L. The GMM estimator versus the semiparametric efficient score estimator under conditional moment restrictions. University of Aarhus, Department of Economics, Building 350; 1999. Working paper series
- Lang, S. *Fundamentals of Differential Geometry*, Volume 191 of Graduate Texts in Mathematics. New York: Springer-Verlag; 1999.
- Le H, Barden D. On the measure of the cut locus of a Fréchet mean. *Bull Lond Math Soc*. 2014; 46:698–708.
- Liang, F., Liu, C., Carroll, RJ. *Advanced Markov Chain Monte Carlo: Learning from Past Samples*. New York: Wiley; 2010.
- Machado L, Leite FS. Fitting smooth paths on Riemannian manifolds. *Int J Appl Math Stat*. 2006; 4:25–53.
- Machado L, Silva Leite F, Krakowski K. Higher-order smoothing splines versus least squares problems on Riemannian manifolds. *J Dyn Control Syst*. 2010; 16(1):121–148.
- Mardia, KV., Jupp, PE. *Directional Statistics*. Chichester: John Wiley & Sons Ltd; 2000.
- McCullagh, P., Nelder, JA. *Generalized Linear Models*. 2. London: Chapman and Hall; 1989.

- Muralidharan, P., Fletcher, P. Sasaki metrics for analysis of longitudinal data on manifolds. *Computer Vision and Pattern Recognition (CVPR)*, 2012 IEEE Conference on; 2012. p. 1027-1034.
- Newey, WK. *Econometrics*, Volume 11 of *Handbook of Statist.* Amsterdam: North-Holland; 1993. Efficient estimation of models with conditional moment restrictions; p. 419-454.
- Paul LK, Brown WS, Adolphs R, Tyszka JM, Richards LJ, Mukherjee P, Sherr EH. Agenesis of the corpus callosum: genetic, developmental and functional aspects of connectivity. *Nature Reviews Neuroscience*. 2007; 8:287–299. [PubMed: 17375041]
- Samir C, Absil PA, Srivastava A, Klassen E. A gradient-descent method for curve fitting on Riemannian manifolds. *Foundations of Computational Mathematics*. 2012; 12(1):49–73.
- Shi, X., Styner, M., LJ, Ibrahim, JG., Lin, W., Zhu, H. Intrinsic regression models for manifold-value data. *International Conference on Medical Imaging Computing and Computer Assisted Intervention (MICCAI)*; 2009. p. 192-199.
- Shi X, Zhu H, Ibrahim JG, Liang F, Liberman J, Styner M. Intrinsic regression models for median representation of subcortical structures. *Journal of American Statistical Association*. 2012; 107:12–23.
- Spivak, M. *A Comprehensive Introduction to Differential Geometry*. 2. Vol. I. Wilmington, Del: Publish or Perish Inc; 1979.
- Su J, Dryden I, Klassen E, Le H, Srivastava A. Fitting smoothing splines to time-indexed, noisy points on nonlinear manifolds. *Image and Vision Computing*. 2012; 30(6–7):428–442.
- Witelson SF. Hand and sex differences in isthmus and genu of the human corpus callosum: a postmortem morphological study. *Brain*. 1989; 112:799–835. [PubMed: 2731030]
- Yuan Y, Zhu H, Lin W, Marron JS. Local polynomial regression for symmetric positive definite matrices. *Journal of Royal Statistical Society B*. 2012; 74:697–719.
- Zhu H, Chen Y, Ibrahim JG, Li Y, Hall C, Lin W. Intrinsic regression models for positive-definite matrices with applications to diffusion tensor imaging. *J Amer Statist Assoc*. 2009; 104(487): 1203–1212.

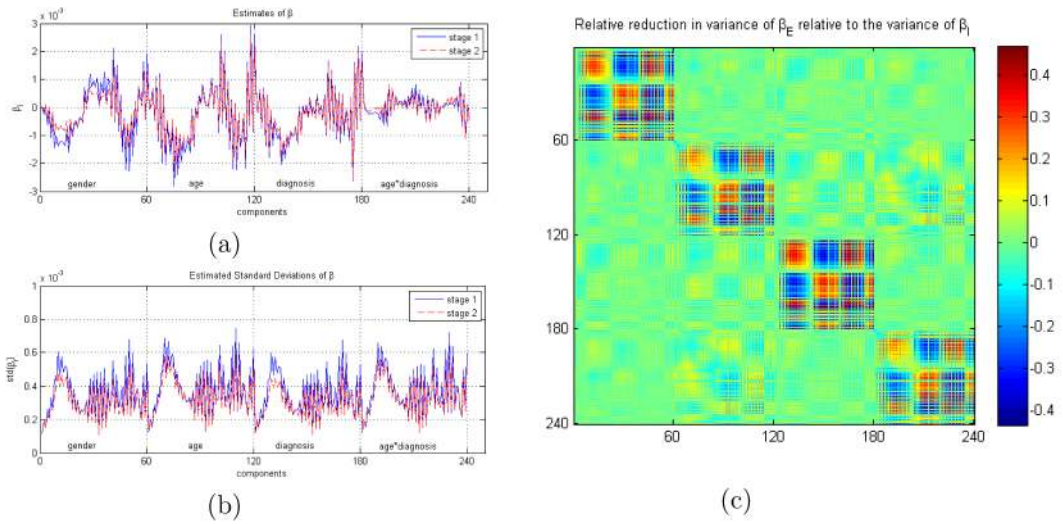




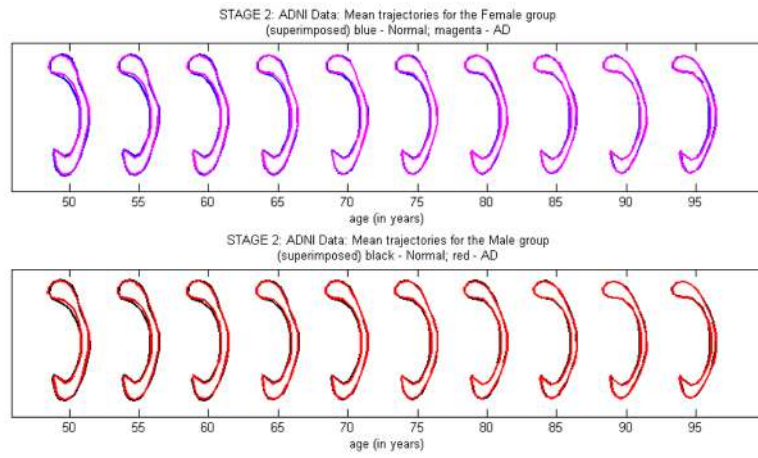
**Fig. 1.** Examples of manifold-valued data: (a) diffusion tensors along white matter fiber bundles and their ellipsoid representations; (b) principal direction map of a selected slice for a randomly selected subject and the directional representation of some randomly selected principal directions on  $S^2$ ; (c) median representations and median atoms of a hippocampus from a randomly selected subject; and (d) an extracted contour and landmarks along the contour of the midsagittal section of the corpus callosum (CC) from a randomly selected subject.



**Fig. 2.** Graphical illustration of (a) stereographic projection and (b) rotated residual and parallel transport. In panel (a),  $\mathbf{N}$  and  $\mathbf{O}$  denote the north pole  $(0, 0, 1)$  and the origin  $(0, 0, 0)$ , respectively. In panel (b),  $y$ ,  $\boldsymbol{\mu} = \boldsymbol{\mu}(\mathbf{x}, q, \boldsymbol{\beta})$ ,  $\boldsymbol{\varepsilon}_D = \text{Log}_{\boldsymbol{\mu}}(y)$ ,  $\boldsymbol{\mathcal{E}}(y, \mathbf{x}; q, \boldsymbol{\beta})$ , and  $p$ , respectively, represent an observation, the conditional mean, the residual, the rotated residual, and the base point.



**Fig. 3.** Regression coefficient estimates (a) and their standard deviations (b) from Stages I and II; and (c) the relative reduction in the variances of  $\hat{\beta}_E$  relative to those of  $\hat{\beta}_I$ . There is an average of 16.77% relative decrease in variances all parameters in  $\beta$ , corresponding to 12.25% for  $\beta^{ad}$  and 19.98% for  $\beta^g$ .



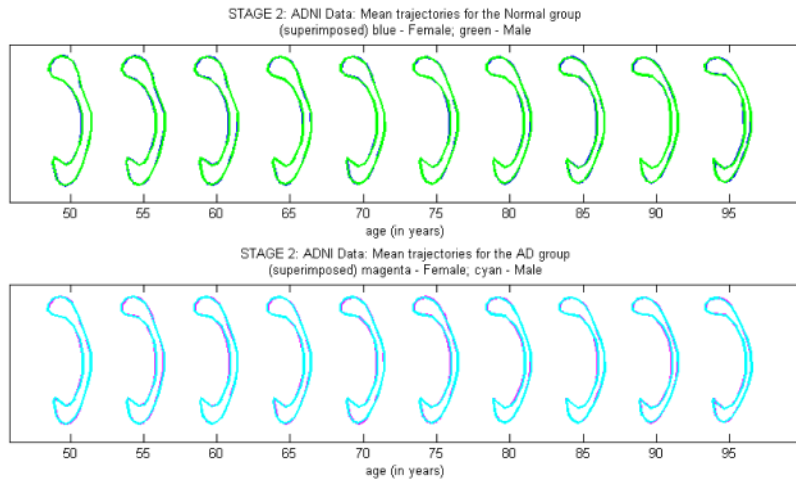
**Fig. 4.** Age-trajectories of the intrinsic mean shapes by diagnosis within each gender group.

Author Manuscript

Author Manuscript

Author Manuscript

Author Manuscript



**Fig. 5.** Age-trajectories of the intrinsic mean shapes by gender within each diagnosis group.

**Table 1**

Demographic information for the processed ADNI CC shape dataset including disease status, age, and gender.

<b>Disease status</b>	<b>No.</b>	<b>Range of age in years (mean)</b>	<b>Gender (female/male)</b>
Healthy Control	223	62–90 (76.25)	107/116
AD	186	55–92 (75.42)	88/98

Author Manuscript

Author Manuscript

Author Manuscript

Author Manuscript