

## Regression of Nephropathy Developed in Diabetes by (Pro)renin Receptor Blockade

Hidena Takahashi,\* Atsuhiko Ichihara,\* Yuki Kaneshiro,\* Kenta Inomata,\* Mariyo Sakoda,\* Tomoko Takemitsu,\* Akira Nishiyama,<sup>†</sup> and Hiroshi Itoh\*

\*Internal Medicine, Keio University School of Medicine, Tokyo, and <sup>†</sup>Pharmacology, Kagawa University School of Medicine, Kagawa, Japan

### ABSTRACT

Activation of prorenin by (pro)renin receptor stimulates the tissue renin-angiotensin system and plays a significant role in the development of nephropathy in diabetic animals. This study examined whether (pro)renin receptor blockade inhibits the progression of nephropathy that has already developed in diabetic rats. Seventeen-week-old heminephrectomized streptozotocin-induced diabetic rats with an increased urinary protein excretion and a significant glomerulosclerosis had been treated for 12 wk with the (pro)renin receptor blocker (PRRB), angiotensin-converting enzyme inhibitor (ACEi), or vehicle peptide by using subcutaneously implanted osmotic minipumps. At the end of observation, in diabetic rats that were treated with vehicle, urinary protein excretion was progressively increased and a significant progression of glomerulosclerosis was observed. In diabetic rats that were treated with PRRB, however, no further increase in urinary protein excretion or glomerulosclerosis was observed, but 12-wk treatment with ACEi only attenuated further increases in urinary protein excretion and glomerulosclerosis. The enhanced expression of activated prorenin was observed in the kidneys of diabetic rats that were treated with vehicle, whereas it was markedly suppressed in the kidneys of diabetic rats that were treated with PRRB but not ACEi. These results suggest that (pro)renin receptor blockade does not only inhibit the progression of nephropathy but also reverses the glomerulosclerosis that has already developed in diabetic rats.

*J Am Soc Nephrol* 18: 2054–2061, 2007. doi: 10.1681/ASN.2006080820

Prorenin has a prosegment of 43 amino acid residues that are attached to the N terminus of mature (active) renin, and the prosegment folds into the active site cleft of mature renin to prevent catalytically productive interaction with angiotensinogen. When a prorenin-binding protein interacts with the “handle region” of the prorenin prosegment, the prorenin molecule undergoes a conformational change to an enzymatically active state.<sup>1</sup> This phenomenon is called nonproteolytic activation, and recent studies found that such binding proteins include the (pro)renin/renin receptor.<sup>2,3</sup>

We recently found that nonproteolytic activation of prorenin plays a pivotal role in the activation of the renal renin-angiotensin system (RAS) and the development of nephropathy in diabetic rats and that the (pro)renin receptor blocker (PRRB; formerly handle region decoy peptide) clearly prevented the development of nephropathy and sup-

pressed an increase of renal angiotensins.<sup>3</sup> However, whether nonproteolytically activated prorenin is also involved in the progression of nephropathy that had already developed in diabetic rats remained undetermined.

This study was designed to determine whether PRRB is able to inhibit the progression of nephropathy after its development in diabetic rats. Prorenin prosegment has a tetrameric segment termed “gate region” (GR; S<sup>7</sup>FGR<sup>10</sup>) that is not accessible by its

Received August 3, 2006. Accepted April 10, 2007.

Published online ahead of print. Publication date available at [www.jasn.org](http://www.jasn.org).

**Correspondence:** Dr. Atsuhiko Ichihara, Department of Internal Medicine, Keio University School of Medicine, 35 Shinanomachi, Shinjuku-ku, Tokyo, 160-8582, Japan. Phone: +81-3-5363-3796; Fax: +81-3-3359-2745; E-mail: [atzichi@sc.itc.keio.ac.jp](mailto:atzichi@sc.itc.keio.ac.jp)

Copyright © 2007 by the American Society of Nephrology

**Table 1.** Body weight, blood glucose, and MAP<sup>a</sup>

Parameter	Age (wk)		
	5	17	29
Body weight (g)			
control	180 ± 4	480 ± 7	570 ± 8
diabetic	178 ± 6	229 ± 7 <sup>b</sup>	
treated with vehicle			279 ± 5 <sup>b</sup>
treated with PRRB			310 ± 7 <sup>b,c</sup>
treated with ACEi			307 ± 7 <sup>b,c</sup>
Blood glucose (mg/dl)			
control	191 ± 14	174 ± 9	181 ± 9
diabetic	168 ± 12	508 ± 12 <sup>b</sup>	
treated with vehicle			564 ± 9 <sup>b</sup>
treated with PRRB			553 ± 8 <sup>b</sup>
treated with ACEi			556 ± 9 <sup>b</sup>
MAP (mmHg)			
control	84 ± 5	86 ± 4	93 ± 5
diabetic	91 ± 4	87 ± 4	
treated with vehicle			87 ± 5
treated with PRRB			90 ± 4
treated with ACEi			77 ± 5 <sup>b,c</sup>

<sup>a</sup>Data are means ± SEM. ACEi, angiotensin-converting enzyme inhibitor;

MAP, mean arterial pressure; PRRB, prorenin receptor blocker.

<sup>b</sup>*P* < 0.05 for diabetic versus control rats.

<sup>c</sup>*P* < 0.05 for PRRB or ACEi treatment versus vehicle treatment.

specific antibodies until it is loosened from the active site cleft.<sup>1</sup> When prorenin gains renin activity by binding of (pro)renin receptor to its “handle region,” the prorenin molecule undergoes a conformational change to an exposure of GR, and tissues that are bound by the activated prorenin can be visualized by immunohistochemical staining of GR by its specific antibody.<sup>4</sup> In this study, therefore, the activated prorenin that was bound to the kidneys from diabetic rats was evaluated using the specific antibody to GR.

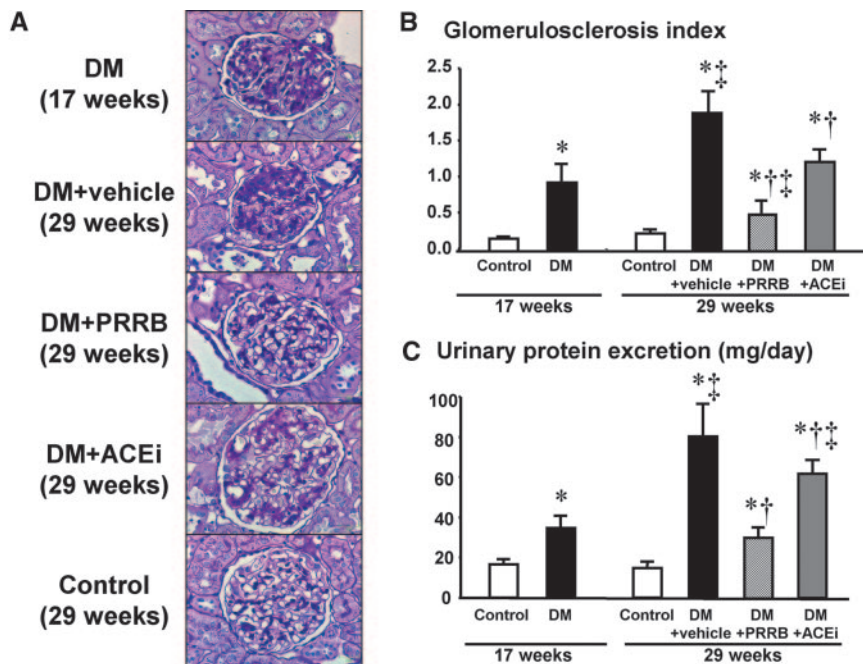
## RESULTS

### General Characteristics of Animal Groups

As shown in Table 1, the body weight of the 17- and 29-wk-old diabetic rats at 12 and 24 wk after the streptozotocin administration was significantly less than that of the control rats. The blood glucose levels of the 17- and 29-wk-old diabetic rats were significantly higher than those of the control rats. Higher blood glucose levels of the diabetic rats *versus* the control rats were maintained during the 24-wk observation period. The mean arterial pressure (MAP) had been similar in the control and diabetic rats during the 24-wk observation period. Continuous infusion of PRRB by subcutaneous minipumps did not affect the blood glucose levels or MAP of diabetic rats, although the body weight of diabetic rats that were treated with PRRB

was slightly but significantly greater than that of 29-wk-old diabetic rats that were treated with vehicle. ACEi treatment did not affect the blood glucose levels of diabetic rats but significantly decreased MAP of diabetic rats. The body weight of diabetic rats that were treated with ACEi was also greater than that of vehicle-treated diabetic rats and similar to that of PRRB-treated diabetic rats.

At 12 and 24 wk after the streptozotocin administration, plasma renin activity in the 17- and 29-wk-old diabetic rats averaged 1.24 ± 0.21 and 0.43 ± 0.08 ng/ml per h, respectively, and were significantly lower than those in the control group (3.38 ± 0.35 and 1.7 ± 0.45 ng/ml per h, respectively). PRRB did not affect the plasma renin activity at 29 wk of age in the diabetic rats (0.46 ± 0.08 ng/ml per h), whereas ACEi significantly increased it to 11.6 ± 2.3 ng/ml per h. At 17



**Figure 1.** Progression of nephropathy in control rats (□; *n* = 12); 17-wk-old diabetic rats (■; *n* = 6); and 29-wk-old diabetic rats that were treated with vehicle peptide (■; *n* = 6), (pro)renin receptor blocker (PRRB; ▨; *n* = 8), or the angiotensin-converting enzyme inhibitor (ACEi) imidapril (▩; *n* = 6). (A) Periodic acid-Schiff–stained kidney sections. Bars = 25 μm. (B) Glomerulosclerosis index. (C) Urinary protein excretion. \**P* < 0.05 versus control rats; †*P* < 0.05 for diabetic rats that were treated with PRRB or ACEi versus 29-wk-old diabetic rats that were treated with vehicle; ‡*P* < 0.05 for 29-wk-old diabetic rats versus 17-wk-old diabetic rats.

and 29 wk of age, plasma angiotensin II (AngII) levels tended to be lower in the diabetic rats ( $21.4 \pm 1.9$  and  $19.2 \pm 3.6$  fmol/L, respectively) than in the control rats ( $29.1 \pm 1.9$  and  $22.7 \pm 2.5$  fmol/L, respectively). PRRB did not influence plasma AngII levels at 29 wk of age in the diabetic rats ( $23.6 \pm 2.0$  fmol/L), but ACEi significantly decreased them to  $10.8 \pm 1.6$  fmol/L.

**Renal Morphology and Urinary Protein Excretion**

Figure 1, A and B, shows changes in renal morphology in the 17-wk-old diabetic rats; 29-wk-old diabetic rats that were treated with vehicle, PRRB, or ACEi; and 29-wk-old nondiabetic control rats. A significant glomerulosclerosis developed in 17-wk-old diabetic rats and was exacerbated in 29-wk-old diabetic rats that were treated with vehicle. However, the progression of glomerulosclerosis that developed in the diabetic rats was significantly attenuated by ACEi treatment and was completely inhibited by long-term administration of PRRB. Glomerulosclerosis index was similar in the 29-wk-old diabetic rats that were treated with ACEi and 17-wk-old diabetic rats. In 29-wk-old diabetic rats that were treated with PRRB, however, glomerulosclerosis index was significantly lower than that in either 17-wk-old diabetic rats or 29-wk-old diabetic rats that were treated with vehicle.

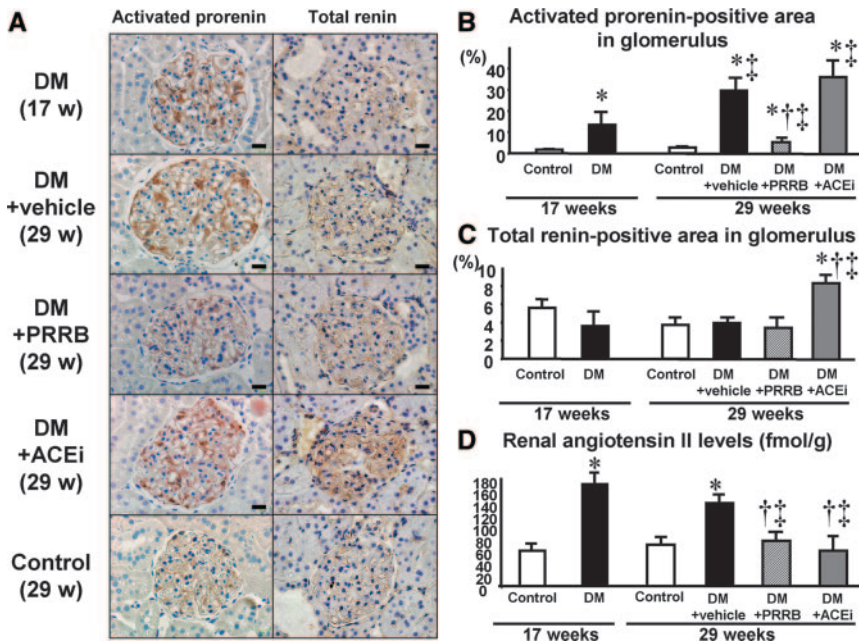
As shown in Figure 1C, urinary protein excretion of 17-wk-old diabetic rats, averaging  $34 \pm 7$  mg/d, was significantly greater than that of 17-wk-old nondiabetic control rats ( $16 \pm 3$  mg/d). Urinary protein excretion of diabetic rats was further increased at 29 wk of age ( $79 \pm 18$  mg/d), but further increase in urinary protein excretion was attenuated in the 29-wk-old diabetic rats that were treated with ACEi ( $66 \pm 7$  mg/d) and significantly inhibited in the 29-wk-old diabetic rats that were treated with PRRB ( $28 \pm 11$  mg/d). Urinary protein excretion was similar in the 29-wk-old diabetic rats that were treated with PRRB and the 17-wk-old diabetic rats.

**Renal Renin, Activated Prorenin, and AngII**

Figure 2, A through C, shows the immunostainings to nonproteolytically activated prorenin and total renin in the glomerulus from the kidneys of 17-wk-old diabetic rats; 29-wk-old diabetic rats that were treated with vehicle, PRRB, or ACEi; and 29-wk-old nondiabetic control rats. A strong glomerular staining to the activated prorenin was observed in 17-wk-old diabetic rats and was further enhanced in 29-wk-old diabetic rats. The 12-wk administration of ACEi did not influence the enhanced glomerular staining to the activated prorenin in the diabetic rats, but PRRB significantly lowered it. In 29-wk-old diabetic rats that were treated with PRRB, activated prorenin-

positive staining in glomerulus was significantly weaker than that in either 17-wk-old diabetic rats or 29-wk-old diabetic rats that were treated with vehicle. However, glomerular staining to total renin was similar among all groups of rats except 29-wk-old diabetic rats that were treated with ACEi. A stronger glomerular staining to total renin was observed in 29-wk-old diabetic rats that were treated with ACEi than in any other group of rats.

As shown in Figure 2D, renal AngII levels of 17-wk-old and 29-wk-old diabetic rats, averaging  $170 \pm 19$  and  $139 \pm 12$  fmol/g, respectively, were significantly greater than those of 17-wk-old and 29-wk-old nondiabetic control rats ( $60 \pm 8$  and  $70 \pm 9$  fmol/g, respectively). The 12-wk treatment with PRRB and ACEi significantly lowered the increased renal AngII levels of the 29-wk-old diabetic rats to  $77 \pm 10$  and  $60 \pm 18$  fmol/g, respectively. Renal AngII levels of the 29-wk-old diabetic rats that were treated with PRRB or ACEi were also lower than those of the 17-wk-old diabetic rats.



**Figure 2.** Renal renin-angiotensin system activation in the control rats (□; n = 12); 17-wk-old diabetic rats (■; n = 6); and 29-wk-old diabetic rats that were treated with vehicle peptide (■; n = 6), PRRB (▨; n = 8), or the ACEi imidapril (▩; n = 6). (A) Immunohistochemistry of nonproteolytically activated prorenin and total renin (renin plus prorenin) by the antibodies to “gate region” (activated prorenin) and renin molecule, respectively. Bars = 25 μm. (B) Quantitative analysis of activated prorenin-positive areas in glomerulus. (C) Quantitative analysis of total renin-positive areas in glomerulus. (D) Renal angiotensin II (AngII) levels. \*P < 0.05 versus control rats; †P < 0.05 for diabetic rats that were treated with PRRB or ACEi versus diabetic rats that were treated with vehicle; ‡P < 0.05 for 29-wk-old diabetic rats versus 17-wk-old diabetic rats.

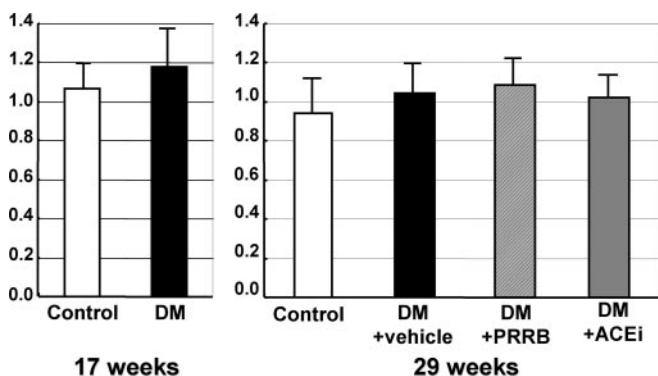


### Renal (Pro)renin Receptor mRNA Expression

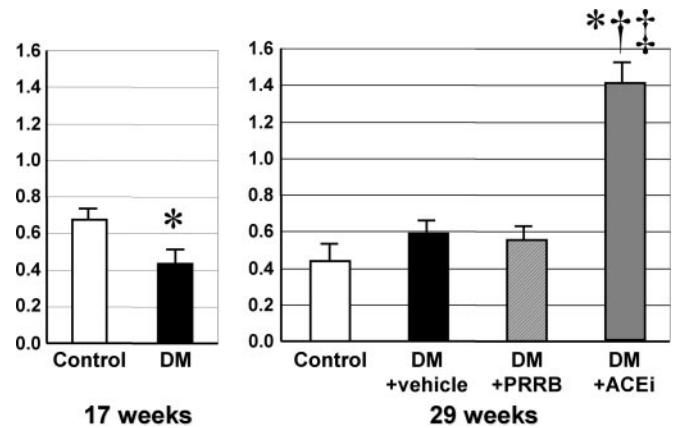
As shown in Figure 3, at 17 and 29 wk of age, renal (pro)renin receptor mRNA levels were similar in the control and diabetic rats and averaged  $1.07 \pm 0.13$  and  $1.18 \pm 0.20$  (ratio to glyceraldehyde-3-phosphate dehydrogenase [GAPDH] mRNA), respectively, at 17 wk of age and  $0.94 \pm 0.18$  and  $1.05 \pm 0.15$  (ratio to GAPDH mRNA), respectively, at 29 wk of age. PRRB treatment or ACEi treatment did not affect the renal (pro)renin receptor mRNA levels of the diabetic rats ( $1.08 \pm 0.14$  and  $1.03 \pm 0.10$  ratio to GAPDH mRNA, respectively).

### Evaluation of Renal Prorenin Content

As shown in Figure 4, renal prorenin synthesis as evaluated by the mRNA level was lower in the diabetic rats ( $0.45 \pm 0.08$  ratio to GAPDH mRNA) than in the control rats ( $0.69 \pm 0.06$  ratio to GAPDH mRNA) at 17 wk of age but was similar in both groups of rats at 29 wk of age ( $0.59 \pm 0.08$  and  $0.45 \pm 0.10$  ratio to GAPDH mRNA, respectively). PRRB administration did not alter renal prorenin mRNA levels in the 29-wk-old diabetic rats ( $0.55 \pm 0.08$  ratio to GAPDH mRNA), but ACEi treatment significantly increased them to  $1.41 \pm 0.11$  ratio to GAPDH mRNA. As shown in Figure 5, renal prorenin resolution as assessed by renal mRNA level of cathepsin B, which was one of prorenin-processing enzymes and predominantly present in the macula densa, was significantly lower in the diabetic rats than in the control rats at 17 ( $1.08 \pm 0.17$  versus  $1.87 \pm 0.18$  ratio to GAPDH mRNA) and 29 wk of age ( $0.34 \pm 0.08$  versus  $0.86 \pm 0.19$  ratio to GAPDH mRNA). PRRB or ACEi administration did not alter renal cathepsin B mRNA level in the 29-wk-old diabetic rats ( $0.52 \pm 0.12$  and  $0.48 \pm 0.11$  ratio to GAPDH mRNA, respectively). This was also supported by renal protein level of cathepsin B at 29 wk of age, which was significantly lower in the diabetic rats ( $31 \pm 16\%$ ) than in the control rats (100%) and was unaffected by PRRB treatment ( $30 \pm 11\%$ ) or ACEi treatment ( $44 \pm 14\%$ ). Renal total renin (prorenin plus renin) levels of 17-wk-old control rats averaged



**Figure 3.** Renal (pro)renin receptor mRNA levels of the control rats ( $\square$ ;  $n = 6$ ) and diabetic rats ( $\blacksquare$ ;  $n = 6$ ) at 17 wk of age and those of the control rats ( $\square$ ;  $n = 6$ ), diabetic rats that were treated with vehicle peptide ( $\blacksquare$ ;  $n = 6$ ), diabetic rats that were treated with PRRB ( $\boxtimes$ ;  $n = 8$ ), and diabetic rats that were treated with ACEi ( $\boxplus$ ;  $n = 6$ ) at 29 wk of age.



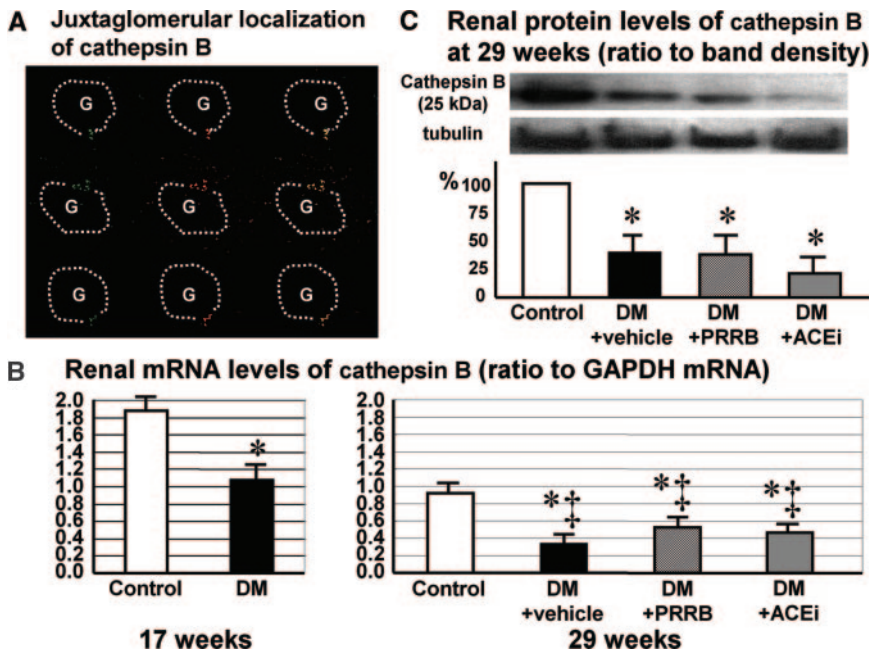
**Figure 4.** Renal levels of prorenin mRNA in the control rats ( $\square$ ;  $n = 6$ ) and diabetic rats ( $\blacksquare$ ;  $n = 6$ ) at 17 wk of age and in the control rats ( $\square$ ;  $n = 6$ ), diabetic rats that were treated with vehicle peptide ( $\blacksquare$ ;  $n = 6$ ), diabetic rats that were treated with PRRB ( $\boxtimes$ ;  $n = 8$ ), and diabetic rats that were treated with ACEi ( $\boxplus$ ;  $n = 6$ ) at 29 wk of age. \* $P < 0.05$  versus control rats; † $P < 0.05$  for diabetic rats that were treated with PRRB or ACEi versus diabetic rats that were treated with vehicle; ‡ $P < 0.05$  for 29-wk-old diabetic rats versus 17-wk-old diabetic rats.

$48 \pm 8$  ng of AngI/g per h and were unaffected by the streptozotocin treatment or PRRB administration at either 17 or 29 wk of age. However, renal total renin (prorenin plus renin) levels of 29-wk-old diabetic rats that were treated with ACEi ( $99 \pm 26$  ng of AngI/g per h) were significantly greater than those of control rats and diabetic rats at either 17 or 29 wk of age (Figure 6).

Renal ACE and angiotensinogen mRNA levels were similar in the control and diabetic rats at 17 and 29 wk of age, and PRRB or ACEi did not alter them in the 29-wk-old diabetic rats. At 17 wk of age, renal ACE mRNA levels of the control and diabetic rats averaged  $0.47 \pm 0.10$  and  $0.43 \pm 0.08$  (ratio to GAPDH mRNA), respectively, and at 29 wk of age, those of the control rats, diabetic rats that were treated with vehicle, diabetic rats that were treated with PRRB, and diabetic rats that were treated with ACEi averaged  $1.11 \pm 0.32$ ,  $0.78 \pm 0.23$ ,  $0.78 \pm 0.22$ , and  $0.82 \pm 0.25$  (ratio to GAPDH mRNA), respectively. Renal angiotensinogen mRNA levels of the control and diabetic rats at 17 wk of age averaged  $1.13 \pm 0.11$  and  $1.02 \pm 0.23$  (ratio to GAPDH mRNA), respectively, and those of the control rats, diabetic rats that were treated with vehicle, diabetic rats that were treated with PRRB, and diabetic rats that were treated with ACEi at 29 wk of age averaged  $1.60 \pm 0.22$ ,  $1.54 \pm 0.40$ ,  $1.64 \pm 0.30$ , and  $1.58 \pm 0.37$  (ratio to GAPDH mRNA), respectively.

## DISCUSSION

In streptozotocin-induced diabetic rats, the development of nephropathy is associated with the activated kidney RAS, and nonproteolytic activation of prorenin significantly contributes



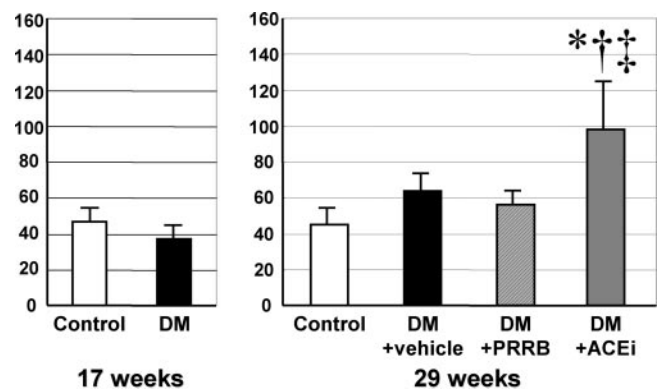
**Figure 5.** Renal localization and expression of cathepsin B. (A) Double-immunolabeling with specific antibodies against cathepsin B (red) and Tamm-Horsfall glycoprotein (green) in the macula densa adjacent to the glomerulus (G). Bars = 25  $\mu$ m. (B) Renal levels of cathepsin B mRNA in the control rats ( $\square$ ;  $n = 6$ ) and diabetic rats ( $\blacksquare$ ;  $n = 6$ ) at 17 wk of age and in the control rats ( $\square$ ;  $n = 6$ ), diabetic rats that were treated with vehicle peptide ( $\blacksquare$ ;  $n = 6$ ), diabetic rats that were treated with PRRB ( $\boxtimes$ ;  $n = 8$ ), and diabetic rats that were treated with ACEi ( $\boxplus$ ;  $n = 6$ ) at 29 wk of age. (C) Renal levels of cathepsin B protein in the control rats ( $\square$ ;  $n = 6$ ), diabetic rats that were treated with vehicle peptide ( $\blacksquare$ ;  $n = 6$ ), diabetic rats that were treated with PRRB ( $\boxtimes$ ;  $n = 8$ ), and diabetic rats that were treated with ACEi ( $\boxplus$ ;  $n = 6$ ) at 29 wk of age. \* $P < 0.05$  versus control rats; † $P < 0.05$  for 29-wk-old diabetic rats versus 17-wk-old diabetic rats.

to the activation of the kidney RAS and the development of nephropathy.<sup>3</sup> However, recent studies showed that the binding to (pro)renin receptor not only causes nonproteolytic activation of prorenin but also stimulates the receptor-mediated, AngII-independent intracellular signals.<sup>5</sup> In this study, beneficial effects of PRRB and ACEi on the nephropathy that developed in diabetic rats were compared to differentiate the RAS-dependent and -independent actions of (pro)renin receptor. A significant glomerulosclerosis and increased urinary protein excretion were observed in 17-wk-old diabetic rats at 12 wk after the streptozotocin injection; thereafter, 12-wk treatment with vehicle peptide exacerbated glomerulosclerosis and further increased urinary protein excretion in diabetic rats. Whereas 12-wk treatment with PRRB significantly improved glomerulosclerosis in the 17-wk-old diabetic rats and markedly inhibited a further increase in urinary protein excretion without changing blood glucose levels or MAP, 12-wk treatment with ACEi inhibited a further increase in glomerulosclerosis in the 17-wk-old diabetic rats and only attenuated a further increase in urinary protein excretion. These results suggest that both RAS-dependent and -independent pathways of (pro)renin receptor contribute to the progression of nephropathy that occurred in diabetic rats and that (pro)renin receptor blockade not only prevents the progression of pro-

teinuria but also reverses the glomerulosclerosis that has already developed in streptozotocin-induced diabetic rats.

Consistent with previous studies,<sup>3,6</sup> the diabetic rats had a lower plasma renin activity and a lower level of plasma AngII than the control rats at either 17 or 29 wk of age. Nevertheless, renal AngII levels of the diabetic rats were higher than those of the control rats. Although renal levels of total renin as evaluated by immunohistochemistry using the anti-renin molecule antibody were similar in the control and diabetic rats at either 17 or 29 wk of age, renal levels of activated prorenin as evaluated by the immunohistochemistry using the anti-GR antibody were also higher in the diabetic rats at either 17 or 29 wk of age. PRRB treatment significantly decreased renal levels of both activated prorenin and AngII, and ACEi treatment significantly decreased renal AngII levels despite increased renal levels of total renin and activated prorenin. Because recent *in vitro* stud-

ies showed that prorenin activation by binding to the (pro)renin receptor can convert angiotensinogen to AngI,<sup>7</sup> the



**Figure 6.** Renal levels of total renin in the control rats ( $\square$ ;  $n = 6$ ) and diabetic rats ( $\blacksquare$ ;  $n = 6$ ) at 17 wk of age and in the control rats ( $\square$ ;  $n = 6$ ), diabetic rats that were treated with vehicle peptide ( $\blacksquare$ ;  $n = 6$ ), diabetic rats that were treated with PRRB ( $\boxtimes$ ;  $n = 8$ ), and diabetic rats that were treated with ACEi ( $\boxplus$ ;  $n = 6$ ) at 29 wk of age. \* $P < 0.05$  versus control rats; † $P < 0.05$  for diabetic rats that were treated with PRRB or ACEi versus diabetic rats that were treated with vehicle; ‡ $P < 0.05$  for 29-wk-old diabetic rats versus 17-wk-old diabetic rats.

activated prorenin is thought to mediate an increase in renal AngII of diabetic rats.

To evaluate the expression of activated prorenin in the kidneys, we previously used the antibody to active the center of renin, which binds to both activated prorenin and renin, and found a strong immunostaining in the juxtaglomerular area and a weak immunostaining in the intraglomerular area.<sup>3</sup> In this study, however, we used the antibody to the GR of prorenin prosegment, which binds to activated prorenin but not to renin,<sup>4</sup> and found a strong immunostaining in the intraglomerular area and a weak immunostaining in the juxtaglomerular area (data not shown). Therefore, the difference in renal staining pattern of activated prorenin might be dependent on the specificity of the antibodies.

Whereas renal levels of activated prorenin increased in diabetic rats, (pro)renin receptor mRNA levels did not increase in the kidneys from diabetic rats at 17 or 29 wk of age. In addition, renal prorenin mRNA levels of diabetic rats decreased at 17 wk of age and did not increase at 29 wk of age. There were some possible explanations for the reason that the nonproteolytic activation of prorenin occurs in diabetic rat kidneys. The affinity of the (pro)renin receptor to prorenin might be increased in diabetic rat kidneys, or unknown activator proteins that bind to the “handle region” of prorenin might be increased in the kidneys of diabetic rats. Alternatively, renal prorenin levels might be accumulated by a long-term inhibition of prorenin resolution, even if prorenin synthesis were suppressed. Prorenin-processing enzymes such as cathepsin B, which was predominantly present in the macula densa, metabolize prorenin and have been reported to be decreased in diabetic conditions by previous *in vitro* and *in vivo* studies.<sup>8,9</sup> In this study, renal levels of cathepsin B mRNA and protein were also decreased in diabetic rats. This result suggests that the decreased prorenin resolution can accumulate renal prorenin content in 17-wk-old diabetic rats despite the decreased generation of renal prorenin, and that renal accumulation of prorenin may be enhanced in 29-wk-old diabetic rats by the recovered generation of renal prorenin. This concept might be also supported by the results of this study showing that renal total renin (prorenin plus renin) content was unchanged despite the decreased prorenin synthesis in 17-wk-old diabetic rats.

Conventional RAS inhibitors can slow the progression of diabetic nephropathy<sup>10,11</sup> but cannot reverse the glomerulosclerosis that has developed in diabetic animals. In this study, ACEi treatment only attenuated the progression of nephropathy, but (pro)renin receptor blockade successfully reversed the glomerulosclerosis that had developed in diabetic animals, suggesting that PRRB has more benefits than conventional RAS inhibitors. Recent studies demonstrated that (pro)renin receptor stimulates the matrix protein expression in rat mesangial cells through a RAS-independent mechanism<sup>12</sup> and contributes to the development of nephropathy in diabetic AngII type 1a receptor-deficient mice.<sup>5</sup> Therefore, the RAS-independent actions of prorenin receptor may play a key role in the regression of nephropathy that has developed in diabetic animals.

## CONCLUSION

A long-term (pro)renin receptor blockade significantly reversed the glomerulosclerosis and markedly inhibited the increase in urinary protein excretion after a significant nephropathy occurred in diabetic rats. Because the blood glucose level or MAP was unaffected by the PRRB treatment, the lowering renal levels of AngII and activated prorenin by (pro)renin receptor blockade was thought to cause the restoration of nephropathy that had already developed in diabetic rats. Thus, (pro)renin receptor blockade may be a useful therapy to reverse the nephropathy after its development in diabetic animals.

## CONCISE METHODS

### Animals

We maintained male Sprague-Dawley rats (Charles River Labs, Yokohama, Japan) in a temperature-controlled room that was maintained at 23°C and a 12:12-h light-dark cycle with free access to water and a normal-salt-diet rat chow (0.4% NaCl; CE-2; Nihon Clea, Tokyo, Japan). The Keio University Animal Care and Use Committee approved all experimental protocols. At 3 wk of age, under sodium pentobarbital (50 mg/kg intraperitoneally) anesthesia, we removed the left kidney of 100- to 150-g rats and divided the heminephrectomized rats into two groups: The control rat group and diabetic rat group at 5 wk of age. Diabetic rats intraperitoneally received 10 mM citrate buffer with 65 mg/kg streptozotocin (Wako, Osaka, Japan), and nondiabetic control rats received 10 mM citrate buffer alone. At 12 wk after the streptozotocin administration, diabetic rats were further divided into three groups: Treated with vehicle, treated with the ACEi imidapril hydrochloride at 0.015% in their drinking water, or treated with the PRRB. The decapeptide PRRB (NH<sub>2</sub>-R<sup>10</sup>RILLKKMPV<sup>19</sup>-COOH), which includes the handle region sequence,<sup>1</sup> or NH<sub>2</sub>-M<sup>30</sup>TRISAE<sup>36</sup>-COOH used as a vehicle were subcutaneously administered at 0.1 mg/kg by the osmotic minipump (model 2004 for 28 d-use; Alzet, Cupertino, CA) implanted every 28 d. We decapitated at least six rats in each group at 12 and 24 wk after the streptozotocin administration to obtain the blood and right kidney of each rat.

### Experiments

At 4 wk of age, we implanted a telemetry transmitter probe (model TA11PA-C40; Data Sciences Int., St. Paul, MN) into rats under sodium pentobarbital anesthesia (50 mg/kg intraperitoneally), and the flexible tip of the probe was positioned immediately below the renal arteries. The transmitter was then surgically sutured into the abdominal wall, and the incision was closed. The rats were then returned to their home cages and allowed to recover for 6 d before the start of the measurements. We monitored conscious MAP, heart rate, and the activity in unrestricted and untethered rats with the Dataquest IV system (Data Sciences Int.), which consisted of the implanted radio-frequency transmitter and a receiver placed under each cage. The output was relayed from the receiver through a consolidation matrix



to a personal computer. Individual 10-s MAP, heart rate, and activity waveforms were sampled every 5 min throughout the course of the study, and daily averages and SD were then calculated. The 24-h urine was collected in a metabolic cage, and urinary protein and creatinine excretion was determined with a Micro TP test kit (Wako) and a Creatinine HA test kit (Wako), respectively. Blood glucose was analyzed with a Glucose C test kit (Wako) using the venous blood that was obtained from the tail vein.

### Morphologic and Immunohistochemical Evaluation

A part of the kidney that was removed from each rat was fixed in 10% formalin in phosphate buffer (pH 7.4). Paraffin-embedded sections were stained by the periodic acid-Schiff method. We quantitatively determined the total area of sclerosis within the glomerular tuft, adopting the semiquantitative scoring system proposed by El Nahas *et al.*<sup>13</sup> A glomerulosclerosis index was derived for each rat by examination of 100 glomeruli at  $\times 400$  magnification. The severity of glomerulosclerosis was expressed on an arbitrary scale from 0 to 4: Grade 0, normal glomeruli; grade 1, presence of mesangial expansion/thickening of the basement membrane; grade 2, mild/moderate segmental hyalinosis/sclerosis involving  $<50\%$  of the glomerular tuft; grade 3, diffuse glomerular hyalinosis/sclerosis involving  $>50\%$  of the tuft; grade 4, diffuse glomerulosclerosis with total tuft obliteration and collapse. The resulting index in each rat was expressed as a mean of all scores obtained.

For immunohistochemical staining, deparaffinized sections were pretreated with proteinase K. After boiling the sections in citrate buffer with microwaves to unmask antigenic sites, endogenous biotin was blocked with a Biotin Blocking System (X0590; DAKO Corp., Carpinteria, CA). Next, the sections were immersed in  $0.3\% \text{H}_2\text{O}_2$  in methanol to inhibit endogenous peroxidase and then precoated with 1% nonfat milk in PBS to block nonspecific binding. For evaluation of the kidney content of nonproteolytically activated prorenin and total renin, immunohistochemical staining of nonproteolytically activated prorenin and renin molecule was performed.<sup>4</sup> The rabbit anti-rat GR antibody<sup>4</sup> and rabbit anti-renin-molecule antibody<sup>14</sup> were applied to the sections as the primary antibody. The sections were incubated with a biotin-conjugated anti-rabbit IgG as the secondary antibody, and the antibody reactions were visualized with a Vectastain ABC Standard Kit (Vector Laboratories, Burlingame, CA) and an AEC Standard Kit (DAKO) according to the manufacturers' instructions. We quantitatively determined the immunoreactive nonproteolytically activated prorenin-positive area and the immunoreactive total renin-positive area in each glomerulus at  $\times 200$  magnification with a Mac SCOPE (Ver. 2.5; Mitani Corp., Fukui, Japan) and expressed it as a percentage of the whole cross-sectional area of the glomerulus.

### Double-Immunolabeling of Cathepsin B and Tamm-Horsfall Glycoprotein

Dual immunofluorescence was performed on  $4\text{-}\mu\text{m}$  cryostat sections. The primary antibodies were as follows: Rabbit polyclonal anti-cathepsin B antibody (1:50; Santa Cruz Biotechnology) and sheep polyclonal anti-Uromucoid antibody (1:20; Biodesign Int., Saco, ME), and the secondary antibodies were rhodamine-conjugated anti-rabbit IgG and FITC-conjugated anti-sheep IgG (1:500; Chemicon Int., Te-

mecula, CA). The sections were examined with a confocal microscope BZ-8000 (Keyence, Osaka, Japan). The secondary antibodies had been isolated by immunoaffinity chromatography and absorbed for dual labeling. Control measures included omitting the primary antibody and substituting normal IgG from the same rat for the primary antibody.

### Western Blotting of Renal Cortex

The renal cortex or medulla was lysed in T-PER reagent (Pierce, Rockford, IL) that contained  $25\ \mu\text{l}$  dithiothreitol (1 mol/L) and  $250\ \mu\text{l}$  PMSF (100 mmol/L), and after 5-min centrifugation at  $10,000 \times g$ , the supernatant was collected and subjected to SDS-PAGE. The proteins were transferred to polyvinylidene difluoride membranes, and after blocking the blots overnight with PBS that contained 5% bovine albumin and 0.5% Tween 20, they were incubated for 16 h with polyclonal rabbit anti-cathepsin B antibody (1:1000 dilution). Immunoreactivity was determined by using horseradish peroxidase-conjugated donkey anti-rabbit antibody and the enhanced chemiluminescence reaction, and the quantitative analyses were performed using Image Analyzer LAS-3000 (Fujifilm, Tokyo, Japan).

### RAS

Immediately after decapitation, a 3-ml blood specimen was collected into a tube that contained  $30\ \mu\text{l}$  of EDTA (500 mM),  $15\ \mu\text{l}$  of enalaprilat (1 mM), and  $30\ \mu\text{l}$  of *o*-phenanthroline (24.8 mg/ml), and pepstatin (0.2 mM), and plasma samples were obtained by centrifugation. Plasma renin activity was determined with a RIA-coated bead kit (Dinabott Radioisotope Institute, Tokyo, Japan). For the measurement of kidney total renin content, a part of the removed kidney was weighed; placed in 5 ml of buffer that contained 2.6 mM EDTA, 1.6 mM dimercaprol, 3.4 mM 8-hydroxyquinoline sulfate, 0.2 mM PMSF, and 5 mM ammonium acetate; homogenized with a chilled glass homogenizer; and centrifuged. The renin activity of the supernatant was determined as described previously.<sup>15</sup> For the determination of kidney AngII content, half of the removed kidney was weighed, placed in ice-cold methanol (10% wt/vol), homogenized with a chilled glass homogenizer, and centrifuged. The supernatant was then dried and reconstituted in 4 ml of 50 mM sodium phosphate buffer that contained 1% albumin. Plasma and reconstituted samples from the kidneys were extracted with a Bond-Elut column (Analytichem, Harbor City, CA), and the eluents were evaporated to dryness and reconstituted in angiotensin peptide assay diluent. The AngII content was quantitatively determined by RIA using rabbit anti-AngII antiserum (Arnel, New York, NY) as previously reported.<sup>16</sup>

We also extracted total RNA from part of the renal cortex that was removed from each rat with an RNeasy Mini Kit (Qiagen, Tokyo, Japan) and performed a real-time quantitative reverse transcription-PCR with the TaqMan One-Step reverse transcription-PCR Master Mix Reagents Kit; an ABI Prism 7700 HT Detection System (Applied Biosystems, Foster City, CA); and probes and primers for the rat genes that encode renin, angiotensinogen, ACE, cathepsin B, (pro)renin receptor, and GAPDH, as described previously.<sup>3,17</sup>

### Statistical Analyses

Within-group statistical comparisons were made by one-way ANOVA for repeated measures followed by the Newman-Keuls *post*

*hoc* test. Differences between two groups were evaluated by two-way ANOVA for repeated measures combined with the Newman-Keuls *post hoc* test.  $P < 0.05$  was considered significant. Data are reported as means  $\pm$  SEM.

## ACKNOWLEDGMENTS

This work was supported in part by grants from the Ministry of Education, Science and Culture of Japan (16790474 and 17390249).

We thank Ai Fukushima for her excellent technical assistance.

## DISCLOSURES

None.

## REFERENCES

- Suzuki F, Hayakawa M, Nakagawa T, Nasir UM, Ebihara A, Iwasawa A, Ishida Y, Nakamura Y, Murakami K: Human prorenin has "gate and handle" regions for its non-proteolytic activation. *J Biol Chem* 278: 22217–22222, 2003
- Nguyen G, Delarue F, Burckle C, Bouzahir L, Giller T, Sraer J-D: Pivotal role of the renin/prorenin receptor in angiotensin II production and cellular responses to renin. *J Clin Invest* 109: 1417–1427, 2002
- Ichihara A, Hayashi M, Kaneshiro Y, Suzuki F, Nakagawa T, Tada Y, Koura Y, Nishiyama A, Okada H, Uddin MN, Nabi AHMN, Ishida Y, Inagami T, Saruta T: Inhibition of diabetic nephropathy by a decoy peptide corresponding to the "handle" region for non-proteolytic activation of prorenin. *J Clin Invest* 114: 1128–1135, 2004
- Ichihara A, Kaneshiro Y, Takemitsu T, Sakoda M, Nakagawa T, Nishiyama A, Kawachi H, Shimizu F, Inagami T: Contribution of non-proteolytically activated prorenin in glomeruli to hypertensive renal damage. *J Am Soc Nephrol* 17: 2495–2503, 2006
- Ichihara A, Suzuki F, Nakagawa T, Kaneshiro Y, Takemitsu T, Sakoda M, Nabi AHMN, Nishiyama A, Sugaya T, Hayashi M, Inagami T: Prorenin receptor blockade inhibits development of glomerulosclerosis in diabetic angiotensin II type 1a receptor deficient mice. *J Am Soc Nephrol* 17: 1950–1961, 2006
- Luetscher JA, Kraemer FB, Wilson DM, Schwartz HC, Bryer-Ash M: Increased plasma inactive renin in diabetes mellitus: A marker of microvascular complications. *N Engl J Med* 312: 1412–1417, 1985
- Nabi AHMN, Kageshima A, Uddin M, T N, Park E, Suzuki F: Binding properties of rat prorenin and renin to the recombinant rat renin/prorenin receptor prepared by a baculovirus expression system. *Int J Mol Med* 18: 483–488, 2006
- Leehey DJ, Song RH, Alavi N, Singh AK: Decreased degradative enzymes in mesangial cells cultured in high glucose media. *Diabetes* 44: 929–935, 1995
- Song RH, Singh AK, Leehey DJ: Decreased glomerular proteinase activity in the streptozotocin diabetic rat. *Am J Nephrol* 19: 441–446, 1999
- Lewis EJ, Hunsicker LG, Clarke WR, Berl T, Pohl MA, Lewis JB, Ritz E, Atkins RC, Rohde R, Raz I: Renoprotective effect of the angiotensin-receptor antagonist irbesartan in patients with nephropathy due to type 2 diabetes. *N Engl J Med* 345: 851–860, 2001
- Brenner BM, Cooper ME, deZeeuw D, Keane WF, Mitch WE, Parving H-H, Remuzzi G, Snapinn SM, Zhang Z, Shahinfar S: Effects of losartan on renal and cardiovascular outcomes in patients with type 2 diabetes and nephropathy. *N Engl J Med* 345: 861–869, 2001
- Burckle CA, Jan Danser AH, Muller DN, Garrelds IM, Gasc JM, Popova E, Plehm R, Peters J, Bader M, Nguyen G: Elevated blood pressure and heart rate in human renin receptor transgenic rats. *Hypertension* 47: 1–5, 2006
- El-Nahas AM, Bassett AH, Cope GH, Carpentier JE: Role of growth hormone in the development of experimental renal scarring. *Kidney Int* 40: 29–34, 1991
- Takii Y, Figueiredo AFS, Inagami T: Application of immunochemical methods to the identification and characterization of rat kidney inactive renin. *Hypertension* 7: 236–243, 1985
- Kobori H, Ichihara A, Suzuki H, Miyashita Y, Hayashi M, Saruta T: Thyroid hormone stimulates renin synthesis in rats without involving the sympathetic nervous system. *Am J Physiol Endocrinol Metab* 272: E227–E232, 1997
- Nishiyama A, Seth DM, Navar LG: Renal interstitial fluid angiotensin I and angiotensin II concentrations during local angiotensin-converting enzyme inhibition. *J Am Soc Nephrol* 13: 2207–2212, 2002
- Ichihara A, Kaneshiro Y, Takemitsu T, Sakoda M, Suzuki F, Nakagawa T, Nishiyama A, Inagami T, Hayashi M: Non-proteolytic activation of prorenin contributes to development of cardiac fibrosis in genetic hypertension. *Hypertension* 47: 894–900, 2006

See the related editorial, "Renin and Its Putative Receptor Remain Enigmas," on pages 1989–1992.