



Relationship Between Indoor Air Pollutant Levels and Residential Environment in Children With Atopic Dermatitis

Jung Hyun Lee,¹ Ho Seok Lee,² Mi Ran Park,² Sang Woon Lee,³ Eun Hye Kim,⁴ Joong Bum Cho,² Jihyun Kim,^{2,3} Youngshin Han,³ Kweon Jung,⁵ Hae Kwan Cheong,⁴ Sang Il Lee,^{2,3} Kangmo Ahn^{2,3*}

¹Department of Pediatrics, Gwangmyeong Sungae Hospital, Gwangmyeong, Korea

²Department of Pediatrics and ³Environmental Health Center for Atopic Diseases, Samsung Medical Center, Sungkyunkwan University School of Medicine, Seoul, Korea

⁴Department of Social and Preventive Medicine, Sungkyunkwan University School of Medicine, Suwon, Korea

⁵Seoul Research Institute of Public Health & Environment, Seoul, Korea

This is an Open Access article distributed under the terms of the Creative Commons Attribution Non-Commercial License (<http://creativecommons.org/licenses/by-nc/3.0/>) which permits unrestricted non-commercial use, distribution, and reproduction in any medium, provided the original work is properly cited.

Purpose: This study was aimed to investigate the relationship between indoor air pollutant levels and residential environment in children with atopic dermatitis (AD) living in Seoul. **Methods:** A total of 150 children with AD were included. Residential environment was assessed by questionnaires which were completed by their parents. To evaluate the level of exposure to the indoor air pollutants, concentrations of the indoor air pollutants including particulate matter with diameter less than 10 μm (PM_{10}), formaldehyde, carbon dioxide (CO_2), carbon monoxide (CO), nitrogen dioxide (NO_2), Total Volatile Organic Compound (TVOC), benzene, toluene, ethyl-benzene, xylene, styrene, bacterial aerosols, and airborne fungi were measured. **Results:** A significant difference was exhibited in the levels of PM_{10} in case of visible fungus on the walls ($P=0.047$). There was relationship between the construction year of the house, moving to a newly constructed building within 1 year and formaldehyde level. With the use of artificial air freshener, the differences were found in the concentrations of TVOC ($P=0.003$), benzene ($P=0.015$), toluene ($P=0.012$) and ethyl-benzene ($P=0.027$). The concentration of xylene was significantly high when oil was used as heating fuel ($P=0.015$). Styrene exhibited differences depending on building type and its concentrations were significantly high in a residential and commercial complex building ($P=0.005$). The indoor concentration of bacterial aerosols was significantly low with the use of air cleaner ($P=0.045$). High NO_2 , benzene concentrations were present in case of almost no ventilation ($P=0.028$ and $P=0.028$, respectively). **Conclusions:** Individual residential environments are closely related with the levels of the indoor air pollutants. To alleviate AD symptoms, simple questions about residential environments such as visible fungus on the walls and the use of artificial air freshener are helpful to assess the possibility of increased indoor air pollutant levels when direct measurement is not available.

Key Words: Atopic dermatitis; environment; childhood; air pollution; pollutant

INTRODUCTION

Atopic dermatitis (AD) is a chronic, pruritic inflammatory skin disease and is one of the most common allergic diseases in children. The prevalence of AD is currently increasing and the incidence in children is reported to range from 15%–30% worldwide.^{1,2} Although the occurrence of AD is associated with genetic factors,^{3,4} recent rising incidence rate is more likely to be related with environmental factors.^{5–7} Many studies have reported on the effects of aeroallergens including pet hair, house dust mite, pollen, and others on the deterioration of AD.^{8–12} In addition, the role of environmental pollutants on the occurrence and deterioration of AD has been investigated.^{13–15} Airborne particulate matters (PM) have been identified to be one of the risk factors related with deteriorating skin condition of AD pa-

tients.¹⁶ Indoor redecoration activities before birth and in the first years of life are associated with the development of AD in early childhood.¹⁷ Exposure to volatile organic compounds (VOCs) can damage the epidermal barrier and enhance adverse effects of house dust mites on sensitized subjects with AD.¹⁸ Exposure to formaldehyde and nitrogen dioxide (NO_2) at

Correspondence to: Kangmo Ahn, MD, PhD, Department of Pediatrics, Samsung Medical Center, Sungkyunkwan University School of Medicine, 81 Irwon-ro, Gangnam-gu, Seoul 135-710, Korea.

Tel: +82-2-3410-3530; Fax: +82-2-3410-0805; E-mail: kmaped@skku.edu

Received: July 8, 2013; Revised: April 26, 2014; Accepted: May 2, 2014

• This study was funded by Environmental Health Research Center Project by the Ministry of Environment, Korea.

• There are no financial or other issues that might lead to conflict of interest.

domestic concentration can cause skin barrier function impairment in patients with AD.¹⁵ High levels of *Staphylococcus aureus* may contribute to disease severity and persistence in AD patients.¹⁹

The concentrations of indoor air pollutants are affected by lifestyle and residential environment.²⁰ Identifying sources of indoor air pollution could be beneficial in creating favorable environment for AD patients. However, there was no report on the residential environments in relation to the concentrations of indoor pollutants in Korean houses. This study was aimed to investigate the relationship between residential environment and indoor air pollutant levels in the houses of AD patients living in Seoul, Korea.

MATERIALS AND METHODS

Participants

The study subjects comprised 150 AD patients living in Seoul. Assessment of residential environment was by a questionnaire and direct measurement of indoor air pollutant levels was conducted in the residences of all the subjects from March, 2008 to April, 2010. The diagnosis of AD was conducted by Hanifin and Rajka's diagnostic criteria.²¹ This study was approved by the institutional review board at Samsung Medical Center in Seoul (IRB approval number: 2013-02-024-001). Written informed consent was obtained from parents prior to participation in the study.

Assessment of residential environments by questionnaires

The parents of all participants were asked to complete a questionnaire for assessing residential environment. The contents of the questionnaire included age, gender, socioeconomic status (monthly family income, educational background of mother) and environmental factors relating to indoor air quality (parental smoking, frequency of vacuuming and frequency of ventilation, distance to nearest major roads, facilities within 2 km of the home, building type, type of floors, indoor renovations within 5 years, moving to newly constructed house within 1 year, carpet, fabric sofa, air cleaner, air conditioning, humidifier, insecticide use and indoor domestic pets).

Direct measurement of indoor air pollutant concentrations

Indoor air pollutant concentrations were measured including particulate matter with diameter less than 10 μm (PM_{10}), formaldehyde, carbon dioxide (CO_2), carbon monoxide (CO), nitrogen dioxide (NO_2), total volatile organic compound (TVOC), benzene, toluene, ethyl-benzene, xylene, styrene, bacterial aerosols and airborne fungi.

Mini-volume Air Sampler, Model 4.1 (Airmetrics Co, Eugene, OR, USA) was used to sample PM_{10} . Each sample collection was conducted in the living room for 8 hours during the daytime at a constant sampling flow rate of 10 L/min. The sampling spot was chosen at a place 1 meter or more away from the walls, ceil-

ing and floor, and the sampler was positioned 1.2–1.5 meters above the floor. Formaldehyde was assessed using personal air sampler (SIBATA MP- Σ 100H, Japan). Sampling was for 30 minutes at a flow rate of 1 L/min. TVOC was assessed using a stainless steel adsorption tube (1/4 inch \times 9 cm, PerkinElmer, Inc., Shelton, UK) charged with 200 mg or above Tenax-TA (60/80 mesh; Supelco, Bellefonte, PA, USA) through solid-phase adsorption. This sampler was also positioned 1.2–1.5 meters above the living room floor and at the same height in a child's room. Sampling was for 30 minutes at a flow rate of 0.1 L/min. A Turbomatrix ATD (PerkinElmer Inc) heat processor, and various types of gas chromatography (GC-MSD, HP-6890 and Agilent 5973; Hewlett-Packard, USA; Agilent, USA) were used in the analyses. The pump used in capturing CO, CO_2 and NO_2 gases was APEX personal air sampler (Casella, Bedford, UK) with reduced fluctuating flow rate before and after sampling. These gases were consecutively collected in a 10 L tetra bag (Supelco) at a flow rate of 1 L/min, and analyzed by a gas analyzer (Eco-tech, Australia). Bacterial aerosols and airborne fungi were assessed using a model 10-880 Single Stage Ambient Viable Sampler (Tisch Environmental, Cleves, OH, USA). Tryptic Soy Agar (TSA) for bacterial aerosols, Malt Extract Agar (MEA) for airborne fungi was the medium. Microbial sampling lasted for 5 minutes at a flow rate of 28.3 L/min 1.2–1.5 meters above living room and child's room floors. The media were cultivated in a MIR252 incubator (SANYO, Japan) at 35°C for 48 hours. Colony forming units (CFU) per area was calculated by dividing CFU value by indoor air volume.

Statistical analyses

Data gathered through indoor environment assessment and survey was analyzed using SAS version 9.1 (SAS Institute, Cary, NC, USA). All values are presented as the mean \pm SD. The correlation between various environmental factors in questionnaires and the direct measurement values of indoor air quality was examined by Pearson correlation analysis to select the residential environment mainly contributing indoor air pollution. Subsequently, influencing variables were adjusted and are presented as least squares mean \pm standard error. A one-way ANOVA was conducted to compare the relationship between the direct measurement values of indoor air quality and the residential environment mainly contributing indoor air pollution. Influencing variables were adjusted by analysis of covariance (ANCOVA). The results were determined to be statistically significant if the *P* value was <0.05 .

RESULTS

AD patients comprised of 93 boys and 57 girls. The mean age of the respondents was 27.0 ± 21.7 months (range 2–168 months). Table 1 shows the distributions of indoor air pollutants levels. Furthermore, the descriptive statistics are shown for tempera-

Table 1. The temperature, humidity and concentrations of indoor air pollutants in the homes of the participants

	Mean	SD	Percentile						
			5	25	50	75	90	95	99
Temperature (°C)	23.4	2.2	19.8	21.9	23.5	25.0	26.1	26.9	31.2
Humidity (%)	42.6	9.3	30.0	36.0	42.0	48.4	55.5	59.1	66.0
PM ₁₀ (µg/m ³)	66.3	30.3	24.6	42.9	63.8	82.4	107.5	124.7	147.7
Formaldehyde (µg/m ³)	75.6	52.1	23.7	40.0	61.0	98.2	145.7	171.7	284.6
TVOC (µg/m ³)	648.2	512.5	181.5	312.2	556.5	735.7	1,124.4	1,893.3	2,591.9
Benzene (µg/m ³)	2.8	2.0	1.0	1.5	2.4	3.4	4.6	6.1	11.8
Toluene (µg/m ³)	95.3	100.7	17.8	30.6	60.8	124.2	218.1	271.0	559.3
Ethyl-benzene (µg/m ³)	5.7	5.8	0.9	2.4	4.0	7.2	14.5	16.8	33.8
Xylene (µg/m ³)	10.6	15.9	0.9	2.9	5.9	11.1	31.1	38.6	85.8
Styrene (µg/m ³)	3.5	5.8	0.2	0.9	1.7	3.0	15.4	17.0	33.4
Bacterial aerosols (CFU/m ³)	646.6	417.1	132.7	366.5	575.0	824.9	1,134.9	1,500.0	2,550.0
Airborne fungi (CFU/m ³)	212.3	281.8	22.7	68.3	114.3	245.0	465.0	650.0	1,600.0

SD, standard deviation; PM, particulate matter; TVOC, total volatile organic compound.

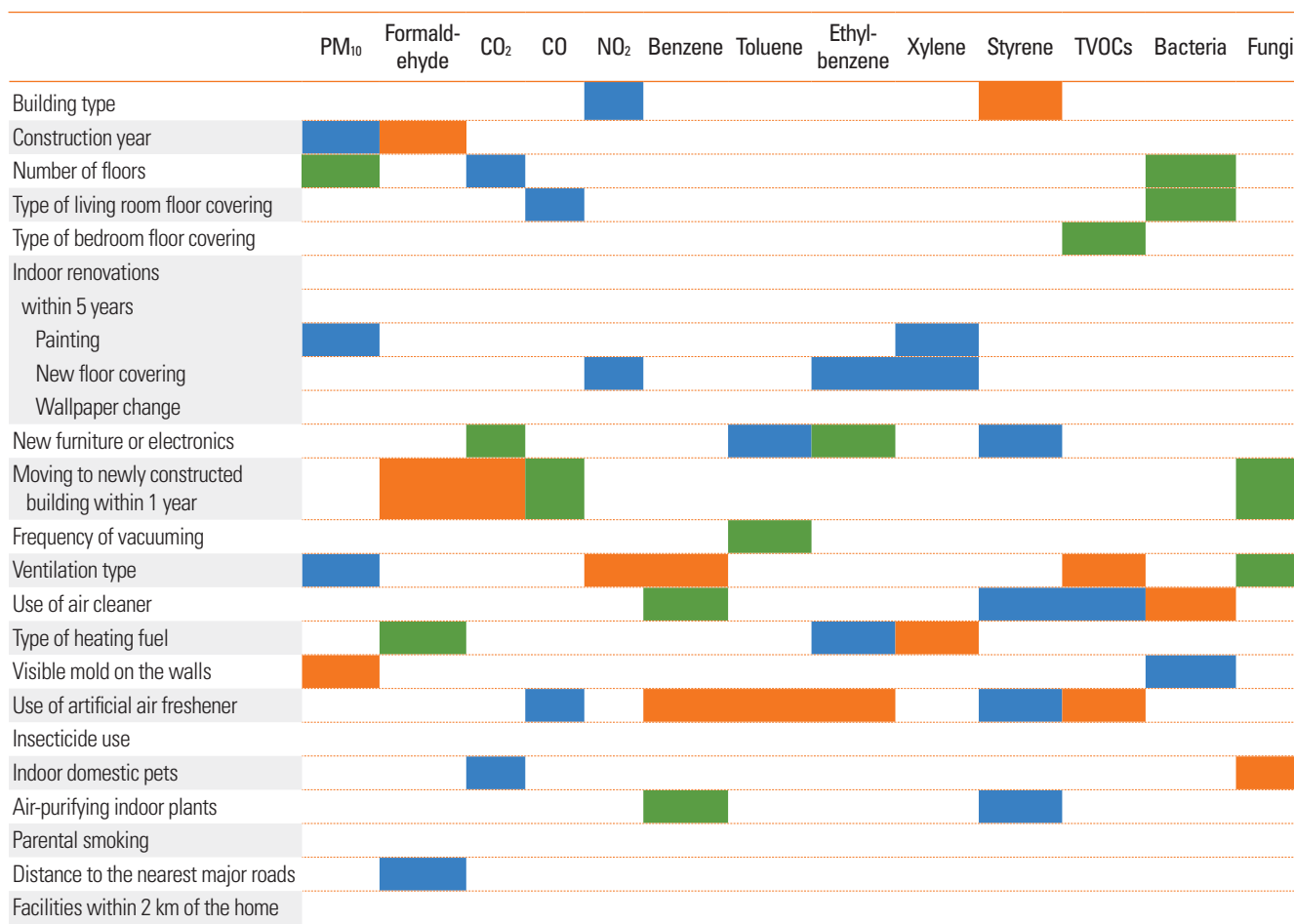


Figure. Distribution of environmental factors mainly contributing to level of the indoor air pollutants. — $P < 0.05$, — $P < 0.1$, — $P < 0.15$. PM, particulate matter; CO₂, carbon dioxide; CO, carbon monoxide; NO₂, nitrogen dioxide; TVOC, total volatile organic compound.

ture, humidity, PM₁₀, formaldehyde, TVOC, benzene, toluene, ethyl-benzene, xylene, styrene, bacterial aerosols and airborne fungi levels. The relationship between the residential environment and in-

Table 2. The relationship between PM₁₀ level (µg/m³) and contributing environmental factors

	N	Mean ± SD	Pvalue	LS mean ± SE	Pvalue*
Construction year			0.305		0.571
< 1990	28	62.3 ± 27.1		78.6 ± 12.4	
1990-1999	44	63.6 ± 26.2		72.3 ± 12.9	
≥ 2000	71	70.9 ± 33.8		81.0 ± 12.0	
Number of floors			0.191		0.698
1st-5th	73	71.7 ± 31.2		80.7 ± 11.2	
6-9th	26	63.6 ± 34.0		73.4 ± 12.8	
≥ 10th	43	61.9 ± 25.4		77.7 ± 13.1	
Indoor renovation: painting within 5 years			0.123		0.185
Yes	35	59.4 ± 24.4		72.3 ± 12.9	
No	114	68.4 ± 31.6		82.3 ± 11.1	
Ventilation type			0.248		0.487
Windows	129	65.4 ± 29.4		69.8 ± 10.1	
Mixed (central + windows)	15	70.9 ± 34.3		70.6 ± 12.1	
Almost no ventilation	3	92.8 ± 37.1		91.5 ± 20.6	
Visible mold on the walls			0.038		0.047
Yes	42	74.5 ± 31.7		83.3 ± 12.6	
No	107	63.1 ± 29.2		70.3 ± 11.1	

*Adjusted for age, gender, temperature, humidity, building type, construction year, distance to the nearest major roads, ventilation type, type of heating fuel, indoor domestic pets, number of floors, indoor renovation (painting) and visible mold on the walls.

PM, particulate matter; SD, standard deviation; LS mean, least squares mean; SE, standard error.

door air pollutant levels are presented in Figure. Pearson correlation analysis was used to examine the relationship between each environmental factor in the questionnaires and the concentrations of each indoor air pollutant. Those factors with no statistical significance were excluded. For the next analysis, we selected the environmental factors with P value < 0.05 and 0.05–0.15, although the latter were weakly statistically significant. One-way ANOVA was conducted on the environmental factors with P < 0.15.

Presence of visible mold on the walls was significantly correlated with concentration of PM₁₀ ($P=0.038$) (Table 2), while other contributing factors such as construction year, number of floors, indoor renovation and ventilation type were not statistically significant. This difference persisted after adjusting with the other contributing factors ($P=0.047$).

The concentration of formaldehyde was significantly related with the house construction year ($P=0.005$) and moving to a newly constructed building within 1 year ($P=0.005$) (Table 3).

Table 3. The relationship between formaldehyde level (µg/m³) and contributing environmental factors

	N	Mean ± SD	Pvalue	LS mean ± SE	Pvalue*
Construction year			0.005		0.426
< 1990	28	58.1 ± 35.9		86.2 ± 19.9	
1990-1999	44	65.1 ± 38.4		73.7 ± 21.0	
≥ 2000	72	89.6 ± 61.1		88.6 ± 18.0	
Moving to newly constructed building within 1 year			0.005		0.111
Yes	21	104.8 ± 52.7		94.5 ± 21.3	
No	129	70.8 ± 50.7		71.1 ± 17.6	
Type of heating fuel			0.188		0.334
Gas	123	79.2 ± 54.6		95.3 ± 17.3	
Electricity/solar	14	61.9 ± 44.1		80.4 ± 21.6	
Oil	13	56.2 ± 24.3		72.8 ± 24.4	
Distance to the nearest major roads			0.429		0.704
Less than 100 m	57	70.4 ± 40.6		78.3 ± 18.2	
100-200 m	32	74.2 ± 55.6		77.5 ± 18.3	
200-500 m	29	79.9 ± 69.0		80.7 ± 20.3	
Over 500 m	18	93.7 ± 57.8		94.8 ± 23.2	

*Adjusted for age, gender, temperature, humidity, building type, construction year, distance to the nearest major roads, ventilation type, type of heating fuel, indoor domestic pets and moving to newly constructed building.

SD, standard deviation; LS mean, least squares mean; SE, standard error.

However, no significant difference was found after adjustment. The concentration of TVOC was significantly high with mixed type of ventilation ($P=0.009$) and the use of artificial air freshener ($P<0.001$). When adjusted with age, gender, temperature, humidity, building type, construction year, distance to the nearest major roads, ventilation type, type of heating fuel, indoor domestic pets, type of bedroom floor covering, use of air cleaner and use of artificial air freshener, a significant difference was persistent in TVOC concentrations with the use of artificial air freshener ($P=0.003$) (Table 4).

We also analyzed the concentration of each air pollutant constituting indoor TVOC, including benzene, toluene, ethyl-benzene, xylene and styrene. The indoor concentration of benzene exhibited significant relationships with ventilation types ($P=0.035$), and the use of artificial air freshener ($P=0.016$). After adjustment of confounding factors, a statistical significance was still present concerning ventilation type ($P=0.028$) and the use of artificial air freshener ($P=0.015$). A significantly high concentration of benzene was observed in case of 'almost no ventilation' compared with ventilation through windows or a central ventilation system (Table 5). The concentrations of toluene and ethyl-benzene were significantly high with the use of artificial air freshener ($P=0.012$ and $P=0.027$, respectively) even after adjustment (data not shown). The concentration of xylene exhibit-

Table 4. The relationship between TVOC level ($\mu\text{g}/\text{m}^3$) and contributing environmental factors

	N	Mean \pm SD	Pvalue	LS mean \pm SE	Pvalue*
Type of bedroom floor covering			0.812		0.984
Polyvinyl chloride	107	614.9 \pm 482.5		1,027.4 \pm 196.4	
Paper	7	539.4 \pm 233.7		1,192.4 \pm 584.7	
Wood	31	711.3 \pm 561.9		1,036.8 \pm 221.5	
Others [†]	5	1,122.1 \pm 896.9		1,091.4 \pm 263.4	
Ventilation type			0.009		0.471
Windows	130	588.3 \pm 406.3		1,080.9 \pm 241.7	
Mixed (central + windows)	15	995.4 \pm 925.0		1,282.4 \pm 220.0	
Almost no ventilation	3	633.4 \pm 250.6		897.8 \pm 375.8	
Use of air cleaner			0.151		0.327
Yes	63	718.9 \pm 640.3		1,136.6 \pm 242.2	
No	87	597.0 \pm 391.5		1,037.4 \pm 230.0	
Use of artificial air freshener			<0.001		0.003
Yes	15	1,182.6 \pm 20.2		1,355.1 \pm 272.5	
No	135	588.9 \pm 410.0		818.9 \pm 220.0	

*Adjusted for age, gender, temperature, humidity, building type, construction year, distance to the nearest major roads, ventilation type, type of heating fuel, indoor domestic pets, type of bedroom floor covering, use of air cleaner and use of artificial air freshener; [†]marble, ceramic and clay tile.

TVOC, total volatile organic compound; SD, standard deviation; LS mean, least squares mean; SE, standard error.

ed a significant relationship only with heating fuels ($P=0.015$). Concentration of xylene was significantly higher when oil was used as fuel than gas or electricity (data not shown). The concentration of styrene was significantly related with building type ($P=0.005$) after adjustment. Concentration of styrene concentration was significantly higher in a residential and commercial complex building than a detached house, apartment or row house. Although styrene concentration seemed to be related with new furniture or electronics, use of air purifier, use of artificial air freshener and air-purifying indoor plants, there was no significant difference (data not shown).

With regard to bacterial aerosols, a significant difference was shown by the use of air cleaner ($P=0.045$) when the contributing factors were adjusted. The indoor concentration of bacterial aerosols was significantly low with the use of air cleaner (Table 6). The concentration of airborne fungi had significant relationships with ventilation type ($P=0.034$) and indoor domestic pets ($P=0.001$). However, this difference disappeared when adjusting with confounders (Table 7).

When the relationship between CO_2 concentrations and residential environment survey was analyzed, the concentration of CO_2 was significantly low when moving to a newly constructed building within 1 year ($P=0.017$). In contrast, CO_2 concentration

Table 5. The relationship between benzene level ($\mu\text{g}/\text{m}^3$) and contributing environmental factors

	N	Mean \pm SD	Pvalue	LS mean \pm SE	Pvalue*
Ventilation type			0.035		0.028
Windows	130	2.6 \pm 2.0		3.3 \pm 0.6	
Mixed (central + windows)	15	3.1 \pm 1.1		3.6 \pm 0.6	
Almost no ventilation	3	5.5 \pm 4.5		6.1 \pm 1.1	
Use of air cleaner			0.102		0.504
Yes	63	2.4 \pm 1.2		4.2 \pm 0.6	
No	87	3.0 \pm 2.4		4.5 \pm 0.6	
Use of artificial air freshener			0.016		0.015
Yes	15	3.9 \pm 2.3		5.1 \pm 0.8	
No	135	2.6 \pm 2.0		3.6 \pm 0.6	
Air-purifying indoor plants			0.095		0.131
Yes	103	3.0 \pm 2.3		4.6 \pm 0.5	
No	47	2.4 \pm 1.2		3.8 \pm 0.5	

*Adjusted for age, gender, temperature, humidity, building type, construction year, distance to the nearest major roads, ventilation type, type of heating fuel, indoor domestic pets, use of air cleaner, artificial air freshener and air-purifying indoor plants.

SD, standard deviation; LS mean, least squares mean; SE, standard error.

Table 6. The relationship between bacterial aerosols level (CFU/ m^3) and contributing environmental factors

	N	Mean \pm SD	Pvalue	LS mean \pm SE	Pvalue*
Number of floors			0.053		0.837
1st-5th	74	729.4 \pm 436.9		593.6 \pm 174.9	
6-9th	26	514.2 \pm 302.3		531.3 \pm 194.6	
\geq 10th	43	602.0 \pm 444.4		536.6 \pm 200.1	
Type of bedroom floor covering			0.527		0.430
Polyvinyl chloride	77	720.8 \pm 488.8		702.4 \pm 170.8	
Paper	2	435.0 \pm 77.8		354.1 \pm 305.0	
Wood	57	585.7 \pm 319.7		696.4 \pm 207.3	
Others [†]	10	581.8 \pm 282.0		462.5 \pm 241.6	
Use of air cleaner			0.025		0.045
Yes	63	557.7 \pm 411.5		482.1 \pm 184.3	
No	87	711.0 \pm 411.6		625.6 \pm 180.0	
Visible mold on the walls			0.146		0.087
Yes	42	726.0 \pm 364.9		638.6 \pm 194.1	
No	108	615.8 \pm 433.4		469.1 \pm 172.6	

*Adjusted for age, gender, temperature, humidity, building type, construction year, distance to the nearest major roads, ventilation type, type of heating fuel, indoor domestic pets, number of floors, type of bedroom floor covering, use of air cleaner and visible mold on the walls; [†]marble, ceramic and clay tile.

SD, standard deviation; LS mean, least squares mean; SE, standard error.

Table 7. The relationship between airborne fungi level (CFU/m³) and contributing environmental factors

	N	Mean ± SD	Pvalue	LS mean ± SE	Pvalue*
Moving to newly constructed building within 1 year			0.077		0.340
Yes	19	106.0 ± 63.4		242.9 ± 107.1	
No	127	228.2 ± 298.1		315.5 ± 89.6	
Ventilation type			0.034		0.175
Windows	126	194.8 ± 250.0		237.3 ± 83.9	
Mixed (central + windows)	15	391.1 ± 471.2		388.0 ± 92.8	
Almost no ventilation	3	135.8 ± 93.0		212.4 ± 168.5	
Indoor domestic pets			0.001		0.072
Yes	8	514.3 ± 554.9		395.4 ± 138.1	
No	138	194.8 ± 250.4		163.0 ± 75.8	

*Adjusted for age, gender, temperature, humidity, building type, construction year, distance to the nearest major roads, ventilation type, type of heating fuel, indoor domestic pets, moving to newly constructed building and indoor domestic pets.

SD, standard deviation; LS mean, least squares mean; SE, standard error.

was significantly high for residences containing pets ($P=0.003$). Although the concentration of CO₂ was related with the number of floors and the purchase of new furniture or electronics, no statistical difference was observed (data not shown). The concentration of CO was related with types of living room floor covering, moving to a newly constructed building and the use of artificial air freshener among survey items. However, no significant difference was found after the adjustment (data not shown). The indoor concentration of NO₂ showed a significant relationship with ventilation type among effective factors in residential environment survey ($P=0.013$). A significant difference was also observed after adjusting confounding factors ($P=0.028$). A significantly high concentration of NO₂ was observed in case of 'almost no ventilation' compared with ventilation through windows or a central ventilation system (data not shown).

DISCUSSION

In several studies, indoor air pollution has been considered to act as an aggravating factor in AD.²²⁻²⁴ More attention need to be paid to indoor air quality in AD patients, because AD is most prevalent in infants and young children and they spend most of their time indoors. Therefore, it is important to detect hazardous indoor air pollutants to prevent exacerbation of AD symptoms. Although direct measurement of indoor air pollutant level is the best way, it is not easily available in every house of individual AD patient. In this study, we measured the concentrations of 13 indoor air pollutants by visiting the residence of each AD patient and investigated which residential environment could be attributed to increased level of each air pollutant in an

attempt to evaluate indoor air quality indirectly. In particular, our results would be helpful for Korean children with AD, because residential environment varies in each region according to life style, economic status and outdoor air pollutant level.

In homes, particles from combustion (*e.g.*, use of wood stoves, kitchen cooking and candles) and tobacco smoking are major components of indoor air pollution.^{25,26} Higher prenatal exposure to fine particulate matter combined with postnatal exposure to environmental tobacco smoke may increase the risk of infant eczema.²⁷ A moderate increase in long-term exposure to background ambient air pollutants such as ozone and PM₁₀ has been associated with an increased prevalence of AD in children.²⁸ The concentration of ambient ultrafine particles may exacerbate skin symptoms in children with AD.²⁹ Our study showed that significantly high concentration of PM₁₀ was related with visible mold on the walls. As PM includes particles from fungi,^{30,31} our result suggests that removal of visible mold might be helpful to lower indoor PM₁₀ concentration.

Formaldehyde is a well-known irritant of the upper respiratory tract with symptoms such as eye, nose and throat irritation commonly associated with indoor exposure to the gas. Indoor sources of formaldehyde include particle board, plywood, fireboard, paneling, urea formaldehyde foam insulation and some carpets and furniture, as well as some household chemicals.³² Exposure to low concentrations of formaldehyde for a short period of time influences skin surface parameters, especially the skin barrier function, in patients with AD.¹⁵ Low level exposure to indoor formaldehyde may increase the risk of allergic sensitization to common aeroallergens in children.³² In one study, participants experiencing recent indoor renovation showed the odds ratios of 1.9 (95% CI: 1.4-2.7) for eczema.¹⁷ As the level of formaldehyde increases in cases of moving to a newly-built building or a renovated house,^{33,34} lowering formaldehyde level should be taken into account if there is a family member with AD.

Floor wall coverings were the most influential source of indoor VOCs, followed by household cleaning products, wood paneling/furniture, paints and moth repellents.³⁵ Exposure to VOCs can damage the epidermal barrier and enhance adverse effects of house dust mites on sensitized subjects with AD.¹⁸ The recruitment and differentiation of eosinophil/basophil progenitors in response to exposure to environmental tobacco smoke (ETS)-related VOCs during pregnancy or at 1 year of age may play a role in the development of AD or cradle cap during the first year of life.³⁶ In this study, the use of artificial air freshener was significantly associated with high concentrations of benzene, toluene, ethyl-benzene and TVOC, supporting previous data.³⁷ Building type was also one of the factors related to indoor air pollutants including styrene. The levels of volatile substances such as styrene were significantly high in commercial buildings. Our results were similar to those from the previous studies where the levels of volatile substances, particulate matter and CO₂ were high due to a large transient population and

displaced various products in buildings.³⁸ Heating fuel was related to xylene, since the concentration of xylene was significantly high with the use heating oil as the fuel. Xylene is one of the basic and primary oils produced in the petroleum and petrochemical industries. It has been reported to increase the risk of sick house syndrome along with toluene and TVOC.³⁹ The indoor concentrations of CO₂ and airborne fungi were significantly high in case of subjects raising domestic pets. When individuals are frequently exposed to domestic pets, they could be infected by fungus such as *Stachybotrys chartarum*.^{40,41} With regard to indoor bacterial aerosols, a significantly low concentration was associated with the use of air cleaner.

The aim of this study was not to verify the causality between the indoor air pollution and exacerbation of AD symptoms, but to investigate the relationship between the residential environment and indoor air pollutant levels in the homes of Korean children with AD. In addition, some limitations should be considered when interpreting our results. First, our results did not represent general Korean life style, because the residential areas of the participants in this study were restricted to Seoul, the largest metropolitan city in Korea. Secondly, we measured the concentrations of indoor air pollutants at a single time point in each house, although the questionnaire solicited information on the life style and environmental change in the previous 12 months. The measured levels possibly did not reflect the exact level of exposure to each air pollutant, because those levels might be influenced by various confounding factors on a daily basis.

In conclusion, the residential environment of AD patients living in Seoul is closely related with each indoor air pollutant levels. To alleviate AD symptoms, identifying aggravating factors including indoor air quality is important. In this regard, simple questioning about aspects of residential environment such as visible fungus on the walls and the use of artificial air freshener are helpful to assess the possibility of increased indoor air pollutant levels when direct measurement is not feasible.

REFERENCES

1. Leung DY, Bieber T. Atopic dermatitis. *Lancet* 2003;361:151-60.
2. Williams H, Flohr C. How epidemiology has challenged 3 prevailing concepts about atopic dermatitis. *J Allergy Clin Immunol* 2006;118:209-13.
3. Kim HY, Jang EY, Sim JH, Kim JH, Chung Y, Park SH, Hwang EM, Han Y, Ahn K, Lee SI. Effects of family history on the occurrence of atopic dermatitis in infants. *Pediatr Allergy Respir Dis* 2009;19:106-14.
4. Bisgaard H, Halkjaer LB, Hinge R, Giwercman C, Palmer C, Silveira L, Strand M. Risk analysis of early childhood eczema. *J Allergy Clin Immunol* 2009;123:1355-60.e5.
5. Wang IJ, Guo YL, Weng HJ, Hsieh WS, Chuang YL, Lin SJ, Chen PC. Environmental risk factors for early infantile atopic dermatitis. *Pediatr Allergy Immunol* 2007;18:441-7.
6. Miyake Y, Ohya Y, Tanaka K, Yokoyama T, Sasaki S, Fukushima W, Ohfuji S, Saito K, Kiyohara C, Hirota Y; Osaka Maternal and Child Health Study Group. Home environment and suspected atopic eczema in Japanese infants: the Osaka Maternal and Child Health Study. *Pediatr Allergy Immunol* 2007;18:425-32.
7. Sebök B, Schneider I, Harangi F; Primary Care Paediatricians in Baranya County. Familiar and environmental factors influencing atopic dermatitis in the childhood. *J Eur Acad Dermatol Venereol* 2006;20:418-22.
8. Matsunaga I, Miyake Y, Yoshida T, Miyamoto S, Ohya Y, Sasaki S, Tanaka K, Oda H, Ishiko O, Hirota Y; Osaka Maternal and Child Health Study Group. Ambient formaldehyde levels and allergic disorders among Japanese pregnant women: baseline data from the Osaka maternal and child health study. *Ann Epidemiol* 2008;18:78-84.
9. Purvis DJ, Thompson JM, Clark PM, Robinson E, Black PN, Wild CJ, Mitchell EA. Risk factors for atopic dermatitis in New Zealand children at 3.5 years of age. *Br J Dermatol* 2005;152:742-9.
10. Capristo C, Romei I, Boner AL. Environmental prevention in atopic eczema dermatitis syndrome (AEDS) and asthma: avoidance of indoor allergens. *Allergy* 2004;59 Suppl 78:53-60.
11. Schäfer T, Heinrich J, Wjst M, Adam H, Ring J, Wichmann HE. Association between severity of atopic eczema and degree of sensitization to aeroallergens in schoolchildren. *J Allergy Clin Immunol* 1999;104:1280-4.
12. Darsow U, Vieluf D, Ring J. The atopy patch test: an increased rate of reactivity in patients who have an air-exposed pattern of atopic eczema. *Br J Dermatol* 1996;135:182-6.
13. Solé D, Camelo-Nunes IC, Wandalsen GF, Pastorino AC, Jacob CM, Gonzalez C, Wandalsen NF, Rosário Filho NA, Fischer GB, Naspitz CK. Prevalence of symptoms of asthma, rhinitis, and atopic eczema in Brazilian adolescents related to exposure to gaseous air pollutants and socioeconomic status. *J Investig Allergol Clin Immunol* 2007;17:6-13.
14. Ibarogoyen-Roteta N, Aguinaga-Ontoso I, Fernandez-Benitez M, Marin-Fernandez B, Guillen-Grima F, Serrano-Monzo I, Hermosode-mendoza J, Brun-Sandiumetge C, Ferrer-Nadal A, Irujo-Andueza A. Role of the home environment in rhinoconjunctivitis and eczema in schoolchildren in Pamplona, Spain. *J Investig Allergol Clin Immunol* 2007;17:137-44.
15. Eberlein-König B, Przybilla B, Kühnl P, Pechak J, Gebefügi I, Kleinschmidt J, Ring J. Influence of airborne nitrogen dioxide or formaldehyde on parameters of skin function and cellular activation in patients with atopic eczema and control subjects. *J Allergy Clin Immunol* 1998;101:141-3.
16. Hon KL, Leung TF, Ching G, Chow CM, Luk V, Ko WS, Ng PC. Patterns of food and aeroallergen sensitization in childhood eczema. *Acta Paediatr* 2008;97:1734-7.
17. Herbarth O, Fritz GJ, Rehwagen M, Richter M, Röder S, Schlink U. Association between indoor renovation activities and eczema in early childhood. *Int J Hyg Environ Health* 2006;209:241-7.
18. Huss-Marp J, Eberlein-König B, Breuer K, Mair S, Ansel A, Darsow U, Krämer U, Mayer E, Ring J, Behrendt H. Influence of short-term exposure to airborne Der p 1 and volatile organic compounds on skin barrier function and dermal blood flow in patients with atopic eczema and healthy individuals. *Clin Exp Allergy* 2006;36:338-45.
19. Leung AD, Schiltz AM, Hall CE, Liu AH. Severe atopic dermatitis is associated with a high burden of environmental *Staphylococcus aureus*. *Clin Exp Allergy* 2008;38:789-93.
20. Schirmer WN, Pian LB, Szymanski MS, Gauer MA. Air pollution in internal environments and sick building syndrome. *Cien Saude*

- Colet 2011;16:3583-90.
21. Hanifin JM, Rajka G. Diagnostic features of atopic dermatitis. *Acta Derm Venereol Suppl (Stockh)* 1980;Suppl 92:44-7.
 22. Choi H, Schmidbauer N, Sundell J, Hasselgren M, Spengler J, Bornehag CG. Common household chemicals and the allergy risks in pre-school age children. *PLoS One* 2010;5:e13423.
 23. Kim H, Bernstein JA. Air pollution and allergic disease. *Curr Allergy Asthma Rep* 2009;9:128-33.
 24. Charpin D, Penard-Morand C, Raheison C, Kopferschmitt C, Lavaud F, Caillaud D, Annesi-Maesano I. Long-term exposure to urban air pollution measured through a dispersion model and the risk of asthma and allergy in children. *Bull Acad Natl Med* 2009;193:1317-28.
 25. Weichenthal S, Dufresne A, Infante-Rivard C. Indoor ultrafine particles and childhood asthma: exploring a potential public health concern. *Indoor Air* 2007;17:81-91.
 26. Naeher LP, Brauer M, Lipsett M, Zelikoff JT, Simpson CD, Koenig JQ, Smith KR. Woodsmoke health effects: a review. *Inhal Toxicol* 2007;19:67-106.
 27. Jedrychowski W, Perera F, Maugeri U, Mrozek-Budzyn D, Miller RL, Flak E, Mroz E, Jacek R, Spengler JD. Effects of prenatal and perinatal exposure to fine air pollutants and maternal fish consumption on the occurrence of infantile eczema. *Int Arch Allergy Immunol* 2011;155:275-81.
 28. Pénard-Morand C, Charpin D, Raheison C, Kopferschmitt C, Caillaud D, Lavaud F, Annesi-Maesano I. Long-term exposure to background air pollution related to respiratory and allergic health in schoolchildren. *Clin Exp Allergy* 2005;35:1279-87.
 29. Song S, Lee K, Lee YM, Lee JH, Lee SI, Yu SD, Paek D. Acute health effects of urban fine and ultrafine particles on children with atopic dermatitis. *Environ Res* 2011;111:394-9.
 30. Alghamdi MA, Shamy M, Redal MA, Khoder M, Awad AH, Elseoufy S. Microorganisms associated particulate matter: a preliminary study. *Sci Total Environ* 2014;479-480:109-16.
 31. Jenerowicz D, Silny W, Dańczak-Pazdrowska A, Polańska A, Osmola-Mańkowska A, Olek-Hrab K. Environmental factors and allergic diseases. *Ann Agric Environ Med* 2012;19:475-81.
 32. Garrett MH, Hooper MA, Hooper BM, Rayment PR, Abramson MJ. Increased risk of allergy in children due to formaldehyde exposure in homes. *Allergy* 1999;54:330-7.
 33. Maruo YY, Yamada T, Nakamura J, Izumi K, Uchiyama M. Formaldehyde measurements in residential indoor air using a developed sensor element in the Kanto area of Japan. *Indoor Air* 2010;20:486-93.
 34. Hun DE, Corsi RL, Morandi MT, Siegel JA. Formaldehyde in residences: long-term indoor concentrations and influencing factors. *Indoor Air* 2010;20:196-203.
 35. Shin SH, Jo WK. Longitudinal variations in indoor VOC concentrations after moving into new apartments and indoor source characterization. *Environ Sci Pollut Res Int* 2013;20:3696-707.
 36. Weisse K, Lehmann I, Heroux D, Kohajda T, Herberth G, Röder S, von Bergen M, Borte M, Denburg J. The LINA cohort: indoor chemical exposure, circulating eosinophil/basophil (Eo/B) progenitors and early life skin manifestations. *Clin Exp Allergy* 2012;42:1337-46.
 37. Farrow A, Taylor H, Northstone K, Golding J. Symptoms of mothers and infants related to total volatile organic compounds in household products. *Arch Environ Health* 2003;58:633-41.
 38. Li WM, Lee SC, Chan LY. Indoor air quality at nine shopping malls in Hong Kong. *Sci Total Environ* 2001;273:27-40.
 39. Yoshida T, Ogawa M, Goto H, Ohshita A, Kurose N, Yokosawa F, Hirata M, Endo Y. Clinical findings of the patients with sick building syndrome and the results of environmental measurement. *Sangyo Eiseigaku Zasshi* 2011;53:25-32.
 40. Chuard C. Pet-associated infections. *Rev Med Suisse* 2009;5:1985-90.
 41. Chapman JA. *Stachybotrys chartarum* (chartarum = atra = alternans) and other problems caused by allergenic fungi. *Allergy Asthma Proc* 2003;24:1-7.