

ORIGINAL ARTICLE

Relationship between sperm apoptosis signalling and oocyte penetration capacity

S. Grunewald,* T. M. Said,† U. Paasch,* H.-J. Glander* and A. Agarwal†

*Department of Dermatology/Andrology Unit, European Academy of Andrology (EAA) Training Center, University of Leipzig, Germany and
†Reproductive Research Center, Glickman Urological Institute and Department of Obstetrics-Gynecology, Cleveland Clinic Foundation, Cleveland, OH, USA

Summary

Keywords:

annexin, caspase, magnetic-activated cell sorting, mitochondrial membrane potential, phosphatidylserine, sperm preparation

Correspondence:

Ashok Agarwal, Professor and Director, Reproductive Research Center, Glickman Urological Institute, The Cleveland Clinic Foundation, 9500 Euclid Avenue, Desk A19.1, Cleveland, OH 44195, USA.
E-mail: agarwaa@ccf.org

Received 18 September 2006; revised 2 January 2007; accepted 20 February 2007

doi:10.1111/j.1365-2605.2007.00768.x

Human sperm have been documented to display apoptosis-like features such as externalization of phosphatidylserine (EPS), disruption of the transmembrane mitochondrial potential (MMP) and activation of caspases. Our aim was to evaluate possible association between activation of the apoptosis cascade in human sperm and its oocyte penetration capacity using the zona free hamster oocyte penetration assay (SPA). Semen specimens from 76 unselected donors were subjected to double density gradient centrifugation followed by incubation under capacitating conditions for 3 h and SPA. Apoptosis signalling was monitored by assessment of EPS, disruption of MMP and activation of caspase-3 by flow cytometry. Semen samples with subnormal SPA values (<20% penetrated oocytes) contained significantly higher amounts of spermatozoa with EPS, disrupted MMP and activated caspase-3 compared with those samples with normal SPA values (>20% penetrated oocytes, $p < 0.01$). All three apoptosis markers showed a significantly negative correlation with the percentage of penetrated oocytes ($p < 0.01$). Apoptosis-related signalling appears to have a negative association with sperm–oocyte penetration. The exclusion of sperm presenting with those apoptosis-related features during assisted reproduction may improve success rates of procedures such as intrauterine insemination and *in vitro* fertilization.

Introduction

Infertility affects approximately 15% of all couples trying to conceive and a male factor is the sole or contributing factor in almost half of the cases (Sharlip *et al.*, 2002). Although assisted reproductive techniques (ART) have become the treatment of choice in many cases of male and female infertility, the current success rates of these procedures remain suboptimal (Gleicher *et al.*, 2006). The quality of sperm samples is one of the factors determining the success of an ART cycle (Ombelet *et al.*, 2003). The quality of spermatozoa can be evaluated by conventional semen analysis determining sperm concentration, motility, viability and morphology using light microscopy. Although the conventional analysis gives considerable information, it does not assess the presence of apoptosis signalling in spermatozoa, which may be partially responsible for the low fertilization and implantation rates seen

with assisted reproductive techniques (Oehninger *et al.*, 2003).

Human spermatozoa have been documented to display features of several apoptosis signal transduction pathways such as the externalization of phosphatidylserine (EPS), disruption of the transmembrane mitochondrial potential (MMP) and activation of caspases (Glander & Schaller, 1999; Oehninger *et al.*, 2003; Paasch *et al.*, 2004c). The apoptosis signalling cascade was found to be activated to a higher extent in spermatozoa that are immature and in those from infertility patients. In addition, the activation of apoptosis was documented following sperm conservation or preparation methods such as cryopreservation (Paasch *et al.*, 2001, 2004c; Said *et al.*, 2004). Interestingly, a strong correlation of apoptosis markers with motility has been also shown (Paasch *et al.*, 2004b). Therefore, apoptosis appears to have an important association with sperm

parameters, which denotes that it might similarly affect the sperm fertilization potential.

The sperm penetration assay (SPA) using fresh or cryopreserved hamster oocytes is an established in-vitro model to analyse the sperm fertilization potential (Johnson *et al.*, 1995). It gives functional information of sperm and can be used as a predictor of in-vitro fertilization outcome (Irvine & Aitken, 1986; Shy *et al.*, 1988; Soffer *et al.*, 1992). Our aim was to investigate the possible impact of activated apoptosis signalling cascade in human spermatozoa in relation to their oocyte penetration capacity using the zona free hamster oocyte penetration assay.

Materials and methods

Sample preparation

This study was approved by the Institution Review Boards of the Cleveland Clinic Foundation and the Faculty of Medicine, University of Leipzig.

Semen specimens ($n = 76$) were collected from unselected donors following a period of 3–5 days of sexual abstinence. Semen parameters did not need to exceed the World Health Organization reference ranges for the normal fertile population (World Health Organization, 1999). Semen samples contained 31.3 ± 15.3 million sperm/mL (mean \pm SD); $50.9 \pm 26.9\%$ of the spermatozoa were motile. For viability control, eosin staining was performed previous to double density gradient centrifugation within the routine sperm analysis. All semen samples contained $<5\%$ eosin-positive, i.e. $<5\%$ non-viable cells. Specimens containing more than 1 million/mL of leucocytes measured by routine peroxidase staining were not included in the study. Samples were prepared by double density gradient centrifugation (PureCeption; SAGE BioPharma, Bedminster, NJ, USA). Specimens were loaded onto a 40% and 80% discontinuous gradient and centrifuged at 300 g for 20 min at room temperature (25 °C). The resulting 80% pellet was washed by centrifugation for additional 7 min and re-suspended in human tubal fluid media (HTF; Irvine Scientific, Santa Ana, CA, USA). An aliquot from each semen sample was taken for evaluation of the apoptosis related parameters MMP, active caspase-3 and EPS at the time the SPA was performed.

Monitoring of MMP

A lipophilic cationic dye (5,5',6,6'-tetrachloro-1,1',3,3'-tetraethylbenzimidazolyl carbocyanine chloride) was used to detect intact transmembrane potential of mitochondria in spermatozoa (ApoAlert Mitosensor Kit; Clontech, CA, USA). Spermatozoa with intact mitochondria excite an intense red fluorescence because of the formation of the dye aggregates whereas the monomer dye fluoresces green

in the presence of sperm with a disrupted mitochondrial membrane. Mitosensor was used according to the instructions of the manufacturer. Briefly, all aliquots were incubated at 37 °C for 20 min in 1 μ g of the lipophilic cation diluted in 1 mL PBS. Human neutrophils (5×10^6 cells) treated with 1 mM cycloheximide for 6 h were used as positive controls for induction of apoptosis (Pozarowski *et al.*, 2003). Negative controls were processed identically for each fraction except that the stain was replaced with 1 mL PBS.

Detection and evaluation of activated caspase-3

Levels of activated caspases-3 were detected in viable spermatozoa using fluorescein labelled inhibitor of caspase (FLICA), which is cell permeable, non-cytotoxic and binds covalently to active caspase-3 (Ekert *et al.*, 1999). The inhibitor was used with the appropriate controls according to the kit instructions provided by the manufacturers (Carboxyfluorescein FLICA; Immunochemistry Technologies, Bloomington, MN, USA). A 150-fold stock solution of the inhibitor was prepared in dimethyl sulfoxide and was further diluted in phosphate buffered saline (PBS) to yield a 30-fold working solution. All test aliquots and controls (with 100 μ L PBS) were incubated at 37 °C for 1 h with 10 μ L of the working solution and subsequently washed with the rinse buffer. In concordance with the monitoring of MMP, human neutrophils (5×10^6 cells) treated with 1 mM cycloheximide for 6 h were used as positive controls for induction of apoptosis. The negative controls were processed identically for each fraction, except that the stain was replaced with 10 μ L PBS.

Monitoring of EPS

EPS was examined using a monoclonal mouse anti-human phosphatidylserine antibody, clone 1H6 (Upstate Cell Signalling Solutions, Lake Placid, NY, USA). Spermatozoa were incubated with the phosphatidylserine-antibody at a final concentration of 0.5 μ g/mL in PBSB (phosphate buffered saline containing 2% bovine serum albumin) for 20 min on ice, followed by addition of 150 μ L PBSB and centrifugation at $400 \times g$ for 5 min at 20 °C. After discarding the supernatant each sperm pellet was incubated protected from light with 50 μ L of secondary antibody [goat anti-mouse IgG (H + L), fluorescein conjugate; Upstate Cell Signalling Solutions] on ice for 20 min. A second washing step in PBSB ($400 \times g$ for 5 min at 20 °C) was performed to remove excess antibody that was not bound to the spermatozoal surface. For assessment by flow cytometry, sperm pellets were diluted in 400 μ L PBSB. Human neutrophils

(5×10^6 cells) treated with 1 mM cycloheximide for 6 h served as positive controls for induction of apoptosis. The negative controls were processed identically for each fraction, except that the primary antibody was replaced with 200 μ L PBS.

Flow cytometry analysis

All the fluorescence signals of labelled spermatozoa were analysed by the flow cytometer FACScan (Becton Dickinson, Franklin Lake, NJ, USA). A minimum of 10 000 spermatozoa was examined for each assay at a flow rate of <100 cells/sec. The sperm population was gated using 90-degree and forward-angle light scatter to exclude debris and aggregates. The excitation wavelength was 488 nm supplied by an argon laser at 15 mW. Green fluorescence (480–530 nm) was measured in the FHL1 channel and red fluorescence (580–630 nm) in the FHL-2 channel. The percentage of positive cells and the mean fluorescence was calculated on a 1023 channel scale by software Expo32ADC (Coulter, Krefeld, Germany).

Zona-free hamster oocyte penetration assay

The assay was performed as described by Johnson *et al.* (1995) with slight modifications to mimic the human IVF procedure. Sperm aliquots used for the evaluation of sperm penetration assay were subjected to capacitating conditions (incubation in HTF media containing 3% bovine serum albumin for 3.5 h at 37 °C and 5% carbon dioxide). Frozen-thawed hamster oocytes (Embryotech, Wilmington, MA, USA) were briefly exposed to acidified Tyrode's media (Irvine Scientific, Santa Ana, CA, USA) to remove the zona pellucida and in turn their species specificity. The zona-free hamster oocytes were placed in 50 μ L sperm droplets (concentration adjusted to $3\text{--}5 \times 10^6$ sperm/mL), overlaid with mineral oil (Sigma, St Louis, MO, USA) and incubated for 3 h at 37 °C, 5% CO₂. A total of 20 oocytes (five oocytes per sperm droplet) were used for each of the three experiment aliquots.

Following incubation, oocytes were washed in PBS + 10% bovine serum albumin to remove the excess sperm attached to their surface and examined by 400X phase-contrast microscopy (BH2-PC; Olympus, Melville, NY, USA). The presence of decondensed nucleus with an attached tail was taken to represent a positive penetration. The number of oocytes scored for each of the three experimental aliquots ranged from 15 to 20 depending on the number of oocytes damaged during the assay. Results were evaluated as the percentage of oocytes penetrated by sperm (SPA) and the average number of sperm penetrated per oocytes (sperm capacitation index, SCI).

Statistical analysis

Normal distribution was proven by Shapiro–Wilks-test. Pearson's correlation between sperm parameters was calculated and tested against zero. Student's *t*-test for independent samples was used to calculate the difference between samples. Pair wise Pearson's correlation coefficients were used to study the association between different parameters. All tests were two-tailed, and significance is indicated by $p < 0.05$. The statistical analysis was performed using Statistica 6.0 software (StatSoft, Tulsa, OK, USA).

Results

Semen samples were categorized into groups A and B according to their results in the zona-free hamster oocyte penetration assay (Johnson *et al.*, 1995). In group A, 22 of the 76 collected semen samples presented with subnormal SPA values (<20% penetrated oocytes), while in group B, the remaining 54 samples had normal SPA values (>20% penetrated oocytes). The percentage of penetrated oocytes was significantly lower in group A vs. B (15.8 ± 0.8 vs. 34.1 ± 1.5 ; $p < 0.01$). In concordance, the number of sperm per penetrated oocyte (SCI) differed significantly between both groups (group A: 1.2 ± 0.3 sperm vs. group B: 1.5 ± 0.5 sperm, $p < 0.05$). Figure 1 displays an example of a penetrated hamster oocyte.

Furthermore, both groups were compared with regard to the activation of the apoptosis signalling cascade as measured by disrupted MMP, active caspase-3 and the

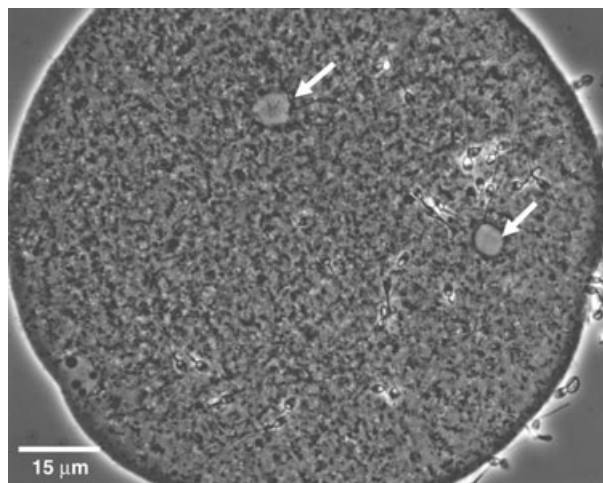


Figure 1 Zona-free hamster oocyte following the sperm penetration assay. Positive penetration is demonstrated by completely decondensed sperm heads; the tail is still visible (white arrows). All other sperm are seen attached to the surface only and are considered negative. Magnification: 67 \times .

Table 1 Comparison of SCI, motility and apoptosis markers in semen samples with normal and subnormal SPA values

	Group A: SPA < 20% (n = 22)	Group B: SPA > 20% (n = 54)	p-value
SCI (sperm per penetrated oocyte)	1.2 ± 0.3	1.5 ± 0.5	<0.05
Motility (% motile spermatozoa)	30.2 ± 15.3	59.3 ± 26.2	0.001
Disrupted MMP (% spermatozoa)	67.1 ± 4.7	35.5 ± 4.2	<0.0001
Active caspase-3 (% spermatozoa)	41.4 ± 3.8	23.0 ± 3.1	0.001
EPS (% spermatozoa)	37.1 ± 4.9	22.3 ± 3.6	0.01

Values are given as mean ± SEM. Statistical test: Student's *t*-tests for independent samples, *p*-values < 0.05 were considered significant. SCI, sperm capacitation index; MMP, mitochondrial membrane potential; EPS, externalized phosphatidylserine.

EPS. Semen specimens with low fertilizing capacity (group A, abnormal SPA values) contained a significant higher number of spermatozoa with activated apoptosis signalling. The mitochondrial transmembrane potential was disrupted in 67.1 ± 4.7% of the spermatozoa, caspase-3 was activated in 41.4 ± 3.8% and externalized phosphatidylserine was found on the surface of 37.1 ± 4.9%. Semen samples of group B (normal SPA values) contained 59.3 ± 26.2% motile sperm (WHO A + B), 35.5 ± 4.2% sperm with disrupted MMP, 23.0 ± 3.1% sperm with activated caspase-3 and 22.3 ± 3.6% sperm with externalized phosphatidylserine (Table 1).

The most pronounced difference was found at the mitochondrial level. Semen samples with subnormal oocyte penetration values (group A) had 31.6% more sperm with disrupted MMP compared with group B. This corresponds to the significant lower motility of semen samples in group A (30.2 ± 15.3% motile sperm, WHO A + B) when compared with group B. There was a strong correlation observed between mitochondrial integrity and motility (Pearson's correlation coefficient: $r = 0.87$, $p < 0.01$).

All of the apoptosis markers were negatively correlated with the percentage of penetrated oocytes (Pearson's correlation coefficient: disrupted MMP: $r = -0.67$, activated caspase-3: $r = -0.59$ and EPS: $r = -0.52$, $p < 0.01$, Figs 2–4). In addition, the apoptosis markers were negatively correlated to the number of sperm per penetrated oocyte (disrupted MMP: $r = -0.49$, activated caspase-3: $r = -0.35$, $p < 0.01$). EPS showed the same trend, but failed to be significant ($r = -0.23$, $p > 0.05$). The portion of motile sperm (WHO A + B) was significantly positive correlated to the SPA results ($r = 0.70$) as well as to the SCI values ($r = 0.51$, $p < 0.01$). Serving as an internal control, there was a strong positive correlation between caspase-3 activation and the disruption of the

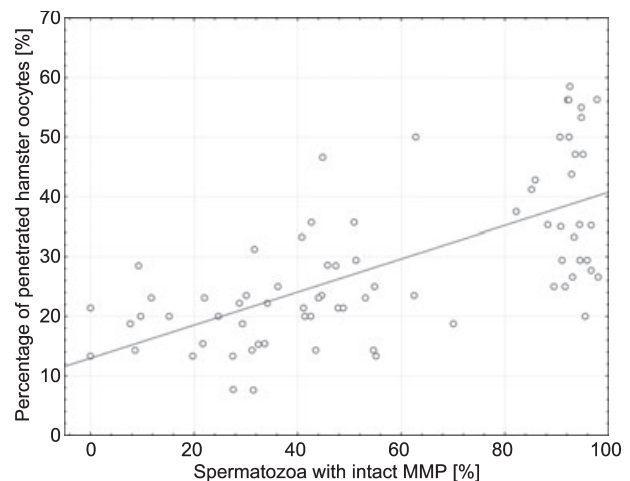


Figure 2 The integrity of the transmembrane mitochondrial potential is one of the key points in apoptosis signalling in human sperm. It shows a strong positive correlation with the sperm oocyte penetration capacity (Pearson's correlation coefficient $r = 0.67$; $p < 0.001$).

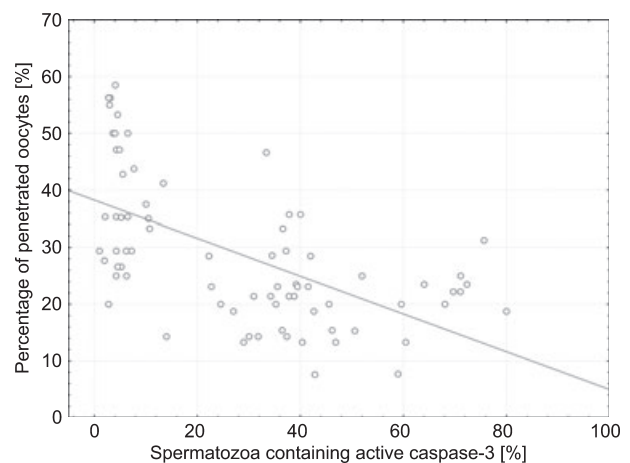


Figure 3 Activation of the main apoptosis executor caspase-3 is significantly negative correlated with sperm oocyte penetration rates (Pearson's correlation coefficient: $r = -0.59$; $p < 0.001$).

mitochondrial transmembrane potential ($r = 0.74$, $p < 0.001$) and EPS ($r = 0.76$, $p < 0.01$). Also, EPS and disrupted MMP correlated positively ($r = 0.71$, $p < 0.01$).

Discussion

The zona-free hamster oocyte penetration assay examines the ability of human spermatozoa to capacitate, undergo the acrosome reaction, fuse with the vitelline membrane of the oocyte and initiate nuclear decondensation. Although it is an animal model with its own limitations, it gives an insight in to the functional status of the sperm

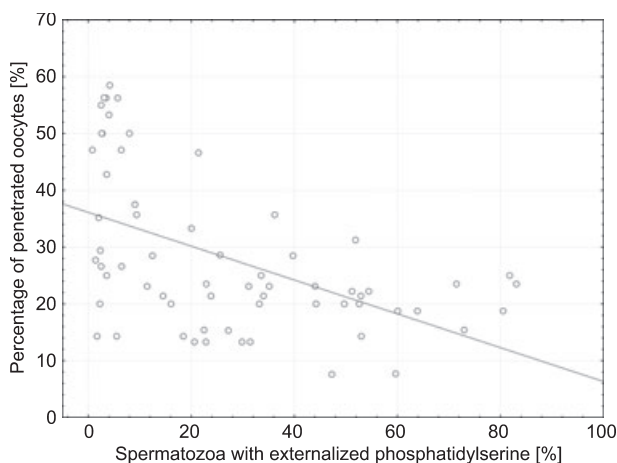


Figure 4 Externalization of phosphatidylserine to the outer leaflet of the sperm membrane is one of the earliest features of terminal apoptosis and correlates significantly negative with the sperm oocyte penetration capacity (Pearson's correlation coefficient $r = -0.52$; $p < 0.001$).

and reflects the fertilizing potential of the sperm (Johnson *et al.*, 1995). Clinically, results of the SPA correlate with the outcome of human IVF and the achievement of spontaneous pregnancy in long-term prospective studies involving infertile patients (Irvine & Aitken, 1986; Shy *et al.*, 1988; Soffer *et al.*, 1992). At the molecular level, results of the SPA also correlate with apoptosis markers such as annexin V staining (Sion *et al.*, 2004).

However, surface exposure of phosphatidylserine on sperm cell activation *in vitro* was found to be restricted to the apical area of the head plasma membrane and related to acrosome reaction too (Martin *et al.*, 2005). On the other hand exposure of phosphatidylserine and its specific binding to Annexin-V has been used to characterize and to select apoptotic spermatozoa. Our own data show that the subpopulation of EPS negative sperm has the same proportion of CD46 as compared with the neat semen (Grunewald *et al.*, 2007).

The presence and functionality of apoptosis associated pathways known from somatic cells remains a subject of controversy when it comes to human sperm (Sakkas *et al.*, 2003; Taylor *et al.*, 2004; Agarwal & Said, 2005). Extensive studies of the activation and localization of caspases in human sperm were performed previously. While caspase-9 was located almost exclusively to the mitochondria, caspase-3 was predominantly found in the cytoplasm (Paasch *et al.*, 2004a).

Our findings indicate a strong negative correlation between the apoptosis related parameters: disruption of the MMP, activation of caspase-3 as well as EPS and the performance of the spermatozoa in the hamster oocyte

penetration assay. Semen samples showing subnormal SPA values were characterized by significantly increased levels of disruption of the MMP, activation of caspase-3 and EPS, indicating an impact of apoptosis-related processes not only at the plasma membrane but also at the mitochondrial and cytoplasmic level on the spermatozoal capacity to penetrate oocytes.

Conclusions

The loss of the integrity of the mitochondrial transmembrane potential and caspase activation were previously demonstrated as processes seen in varying percentages of sperm in all semen samples. The amount of sperm showing those features was found to be increased not only in patients presenting with infertility, but also after cryopreservation and thawing. The association between those apoptosis markers in sperm and the oocyte penetration potential as demonstrated in our findings further supports the negative impact of apoptosis on *in vivo* and *in vitro* fertilization. In this context, the exclusion of sperm presenting with those apoptosis-like features from ART by techniques such as annexin-V-magnetic activated cell sorting may improve success rates.

References

- Agarwal, A. & Said, T. M. (2005) Oxidative stress, DNA damage and apoptosis in male infertility: a clinical approach. *BJU International* 95, 503–507.
- Ekert, P. G., Silke, J. & Vaux, D. L. (1999) Caspase inhibitors. *Cell Death and Differentiation* 6, 1081–1086.
- Glander, H. J. & Schaller, J. (1999) Binding of annexin V to plasma membranes of human spermatozoa: a rapid assay for detection of membrane changes after cryostorage. *Molecular Human Reproduction* 5, 109–115.
- Gleicher, N., Weghofer, A. & Barad, D. (2006) A formal comparison of the practice of assisted reproductive technologies between Europe and the USA. *Human Reproduction* 21, 1945–1950.
- Grunewald, S., Baumann, T., Paasch, U. & Glander, H. J. (2006) Capacitation and Acrosome reaction in nonapoptotic human spermatozoa. *Annals of the New York Academy of Science* 1090, 138–46.
- Irvine, D. S. & Aitken, R. J. (1986) Predictive value of in-vitro sperm function tests in the context of an AID service. *Human Reproduction* 1, 539–545.
- Johnson, A., Bassham, B., Lipshultz, L. I. & Lamb, D. J. (1995) A quality control system for the optimized sperm penetration assay. *Fertility and Sterility* 64, 832–837.
- Martin, G., Sabido, O., Durand, P. & Levy, R. (2005) Phosphatidylserine externalization in human sperm induced by calcium ionophore A23187: relationship with apoptosis,

- membrane scrambling and the acrosome reaction. *Human Reproduction* 20, 3459–3468.
- Oehninger, S., Morshedi, M., Weng, S. L., Taylor, S., Duran, H. & Beebe, S. (2003) Presence and significance of somatic cell apoptosis markers in human ejaculated spermatozoa. *Reproductive Biomedicine Online* 7, 469–476.
- Ombelet, W., Deblaere, K., Bosmans, E., Cox, A., Jacobs, P., Janssen, M. & Nijs, M. (2003) Semen quality and intrauterine insemination. *Reproductive Biomedicine Online* 7, 485–492.
- Paasch, U., Thieme, C. & Glander, H. J. (2001) Analyses of sperm quality in large populations over decades by 'Datamining' and 'Datawarehousing' (Winsperm®). Proceedings of the VIIth International Congress of Andrology, Montreal, Quebec, Canada, 15–19 June, 2001, 269–274. Medimond, Englewood, NJ, USA.
- Paasch, U., Grunewald, S., Agarwal, A. & Glander, H. J. (2004a) The activation pattern of caspases in human spermatozoa. *Fertility and Sterility* 81, 802–809.
- Paasch, U., Grunewald, S., Dathe, S. & Glander, H. J. (2004b) Mitochondria of human Spermatozoa are preferentially susceptible to apoptosis. *Annals of the New York Academy of Science* 1030, 403–409.
- Paasch, U., Sharma, R. K., Gupta, A. K., Grunewald, S., Mascha, E. J., Thomas, A. J. Jr, Glander, H. J. & Agarwal, A. (2004c) Cryopreservation and thawing is associated with varying extend of activation of apoptotic machinery in subsets of ejaculated human spermatozoa. *Biology of Reproduction* 71, 1828–1837.
- Pozarowski, P., Huang, X., Halicka, D. H., Lee, B., Johnson, G. & Darzynkiewicz, Z. (2003) Interactions of fluorochrome-labeled caspase inhibitors with apoptotic cells: a caution in data interpretation. *Cytometry* 55A, 50–60.
- Said, T. M., Paasch, U., Glander, H. J. & Agarwal, A. (2004) Role of caspases in male infertility. *Human Reproduction Update* 10, 39–51.
- Sakkas, D., Seli, E., Bizzaro, D., Tarozzi, N. & Manicardi, G. C. (2003) Abnormal spermatozoa in the ejaculate: abortive apoptosis and faulty nuclear remodelling during spermatogenesis. *Reproductive Biomedicine Online* 7, 428–432.
- Sharlip, I. D., Jarow, J. P., Belker, A. M., Lipshultz, L. I., Sigman, M., Thomas, A. J. et al. (2002) Best practice policies for male infertility. *Fertility and Sterility* 77, 873–882.
- Shy, K. K., Stenchever, M. A. & Muller, C. H. (1988) Sperm penetration assay and subsequent pregnancy – a prospective-study of 74 infertile men. *Obstetrics and Gynecology* 71, 685–691.
- Sion, B., Janny, L., Boucher, D. & Grizard, G. (2004) Annexin V binding to plasma membrane predicts the quality of human cryopreserved spermatozoa. *International Journal of Andrology* 27, 108–114.
- Soffer, Y., Golan, A., Herman, A., Pansky, M., Caspi, E. & Ronel, R. (1992) Prediction of in vitro fertilization outcome by sperm penetration assay with test-yolk buffer preincubation. *Fertility and Sterility* 58, 556–562.
- Taylor, S. L., Weng, S. L., Fox, P., Duran, E. H., Morshedi, M. S., Oehninger, S. & Beebe, S. J. (2004) Somatic cell apoptosis markers and pathways in human ejaculated sperm: potential utility as indicators of sperm quality. *Molecular Human Reproduction* 10, 825–834.
- World Health Organization (1999) Laboratory Manual for the Examination of Human Semen and Sperm – Cervical Mucus Interaction. Fourth edition, Cambridge University Press, Cambridge, UK, World Health Organization.