



Relationship between Tolerance and Persistence Mechanisms in *Acinetobacter baumannii* Strains with AbkAB Toxin-Antitoxin System

Laura Fernández-García,^a Felipe Fernandez-Cuenca,^{b,c,d} Lucía Blasco,^a Rafael López-Rojas,^b Anton Ambroa,^a María Lopez,^a Álvaro Pascual,^{b,c,d} Germán Bou,^a  María Tomás^a

^aServicio de Microbiología, Complejo Hospitalario Universitario A Coruña (CHUAC)—Instituto de Investigación Biomédica (INIBIC), A Coruña, Spain

^bUnidad de Enfermedades Infecciosas y Microbiología Clínica, Hospital Universitario Virgen Macarena, Seville, Spain

^cDepartamento de Microbiología, Universidad de Sevilla, Seville, Spain

^dInstituto de Biomedicina de Sevilla (IBIS), Seville, Spain

ABSTRACT The molecular mechanisms of tolerance and persistence associated with several compounds in *Acinetobacter baumannii* clinical isolates are unknown. Using transcriptomic and phenotypic studies, we found a link between mechanisms of bacterial tolerance to chlorhexidine and the development of persistence in the presence of imipenem in an *A. baumannii* strain belonging to clinical clone ST-2 (OXA-24 β -lactamase and AbkAB toxin-antitoxin [TA] system carried in a plasmid). Interestingly, the strain *A. baumannii* ATCC 17978 (AbkAB TA system from plasmid) showed persistence in the presence of imipenem and chlorhexidine.

KEYWORDS tolerance, persistence, chlorhexidine, imipenem, *Acinetobacter*, toxin-antitoxin

The importance of preventing the development of tolerance and/or persistence has recently been highlighted as a new strategy for delaying the emergence of resistance (1–4). In this context, it is essential to distinguish between bacterial resistance, tolerance, and persistence (5). Resistance refers to the ability of bacterial populations to grow at the same rate in the presence of antibiotic-induced or environmental stress. Tolerance is the ability of a bacterial population to grow slowly in response to stress. Finally, persistence is the latent state of a bacterial subpopulation, which is activated under certain conditions (5).

Several bacterial tolerance mechanisms develop during stress and antibiotic exposure (6). These mechanisms include (p)ppGpp signaling accumulation, reactive oxygen species (ROS) and SOS responses, bacterial communication (quorum sensing), efflux pumps, and energy metabolism (6).

Carbapenem-resistant *Acinetobacter baumannii* (CRAb) is currently a major source of nosocomial infections and is considered a highly successful human pathogen (7). Among the different mechanisms associated with carbapenem resistance in *A. baumannii*, the production of acquired carbapenem-hydrolyzing class D β -lactamases (CHDLs) and class B metallo- β -lactamases (MBLs) has been widely studied (8). On the other hand, the main mechanisms of development of persister cells in the presence of antibiotics (such as imipenem [IMP]) involve toxin-antitoxin (TA) modules (6, 9).

Studies about molecular mechanisms of tolerance and persistence from *A. baumannii* strains in response to several compounds are scarce. In this study, we used transcriptomic and phenotypic assays to analyze the tolerance and persistence mech-

Received 7 February 2018 Accepted 8 February 2018

Accepted manuscript posted online 20 February 2018

Citation Fernández-García L, Fernandez-Cuenca F, Blasco L, López-Rojas R, Ambroa A, Lopez M, Pascual Á, Bou G, Tomás M. 2018. Relationship between tolerance and persistence mechanisms in *Acinetobacter baumannii* strains with AbkAB toxin-antitoxin system. *Antimicrob Agents Chemother* 62:e00250-18. <https://doi.org/10.1128/AAC.00250-18>.

Copyright © 2018 Fernández-García et al. This is an open-access article distributed under the terms of the [Creative Commons Attribution 4.0 International license](https://creativecommons.org/licenses/by/4.0/).

Address correspondence to María Tomás, MA.del.Mar.Tomas.Carmona@sergas.es.

L.F.-G. and F.F.-C. contributed equally to this article. G.B. and M.T. contributed equally to this article.

anisms of *A. baumannii* isolates in response to chlorhexidine and imipenem (resistance and susceptibility to carbapenems).

In a previous work of the REIPI-GEIH Ab-2010 project (10), we worked with the *A. baumannii* clinical strains Ab-2_clon_2010 (belonging to clone ST-2) and Ab-2_clon_2010-CHLX, which showed the absence of an increase of MICs to antibiotics after exposure to subinhibitory concentrations of chlorhexidine digluconate (CHLX) ($0.25 \times$ MIC) during 4 weeks (see Table S1 in the supplemental material). The genome of this Ab-2_clon_2010 strain, together with 17 other clinical strains from this ST-2 clone, were sequenced by Lopez et al. (11) in the Umbrella GenBank BioProject number [PRJNA422585](https://www.ncbi.nlm.nih.gov/bioproject/PRJNA422585). All strains from this ST-2 clone belonged to the REIPI-GEIH Ab-2010 project and had a plasmid with the *bla*OXA_{24/40} β -lactamase gene (conferring resistance to carbapenems), as well as the *abkAB* genes from a toxin-antitoxin system (12). RNA assays by transcriptomics had a number of reads assigned to the different genes and were analyzed using the EdgeR and DESeq2 packages and reverse transcription PCR (RT-PCR) techniques using UPLs Probe (see Table S3 in the supplemental material; Roche, Germany) of both clinical isolates (DNase-treated RNA of Ab-2_clon_2010 and Ab-2_clon_2010-CHLX) (GenBank BioProject number [PRJNA433173](https://www.ncbi.nlm.nih.gov/bioproject/PRJNA433173) and GEO series number [GSE110207](https://www.ncbi.nlm.nih.gov/geo/query/acc.cgi?acc=GSE110207)), the results of which are shown in Table S2 and Fig. S1 and S2 in the supplemental material.

The results showed the activation of tolerance molecular mechanisms (known as “tolerome”) in response to chlorhexidine in strain Ab-2_clon_2010-CHLX (Table 1). In relation with the tolerome, in the strain Ab-2_clon_2010-CHLX, we observed overexpression (1.5- to 6-fold change [FC]) of genes encoding the AdeABC, arsenite, and Acl chlorhexidine efflux pumps (10, 13–16). Some of these additional protective mechanisms, such as the production of efflux pumps, may also reduce the effective concentration of the antibiotic, which increases the MIC and results in a mixed phenotype of resistance and tolerance (5). We also observed an increase in the expression of genes involved in tetracycline and aminoglycoside resistance (FC, 3.4 to 6). The genes with the highest level of overexpression in this study were those carried by the AbATCC329 plasmid (PMMCU3p), such as OXA24/40 β -lactamase, DNA replication protein, and OriV (FC, 5.2 to 12) (12) (Table 1). Interestingly, the gene expression FCs of *abkA* (antitoxin gene) and *abkB* (toxin gene) from this plasmid were 0.63 and 1.25, respectively. In addition, we observed the overexpression of genes associated with molecular mechanisms of bacterial tolerance (FC, 3.5 to 10), namely, the *CsuA/BABCDE* operon (17, 18), the *CydAB* operon (cytochrome *d* ubiquinol oxidase complex) (19, 20, 21), the taurine operon complex (taurine metabolism/electron carrier activity) (22, 23), and finally, regulatory genes involved in the quorum-sensing (QS) system, i.e., *abaR* and *abaI* (Table 1) (22–25).

We used the Kyoto Encyclopedia of Genes and Genomes (KEGG) tool to analyze those genes that were downregulated (FC, ≤ 0.5 -fold) in Ab-2_clon_2010-CHLX. We studied two metabolic pathways. The first one was the ppGpp network (KEGG accession numbers [ec00230_2.7.7.6](https://www.kegg.jp/entry/ec00230_2.7.7.6) and [ec00230_2.7.7.7](https://www.kegg.jp/entry/ec00230_2.7.7.7)) involving RNA polymerases, DNA polymerases, and finally, 50S ribosomal protein. The ppGpp network is mediated by a variety of RelA/SpoT homologue (RSH) proteins with a nucleotidyl transferase domain, with some displaying only synthetic or hydrolytic activities, and others displaying both (Rel) (26, 27). Accumulation of (p)ppGpp affects resource-consuming cell processes, such as replication, transcription, and translation. Furthermore, (p)ppGpp is thought to bind RNA polymerase and alter the transcriptional profile, decreasing the synthesis of translational machinery (such as rRNA and tRNA) and increasing transcription of the biosynthetic gene (28). Additionally, initiation of new rounds of replication is inhibited, and the cell cycle arrests until nutrient conditions improve (29). Translational GTPases involved in protein biosynthesis are also affected by ppGpp, with initiation factor 2 (IF2) being the main target (30). Although these proteins are scarcely known in *A. baumannii*, in this study we describe RelA-SpoT-homologous (RSH) proteins associated with these functions that show repression in Ab-2_clon_2010-CHLX isolate. The second metabolic pathway studied was that of oxidative phosphorylation (KEGG accession

TABLE 1 Mechanisms of bacterial tolerance to chlorhexidine in strain Ab-2_clon_2010-CHLX, revealed by transcriptomic studies^a

GenBank ^b protein accession no.	Gene expression fold change determined by:		Functional description	Defense mechanism (reference no.)	Tolerome type (reference no.)
	DESeq2	EdgeR			
ODA53993.1	6.933753475	6.982635042	AdeA protein	AdeABC system (RND-type) (10)	Transporter/efflux pump (5)
ODA53994.1	6.149907892	6.175526694	AdeB protein		
ODA53995.1	4.257153566	4.270842036	AdeC protein		
ODA55718.1	6.119321647	6.133494454	Tetracycline resistance protein	MFS system	
ODA54617.1	5.377292457	7.227172031	Arsenite efflux pump	ACR3 system (13)	
ODA56577.1	3.498098186	3.528728206	Aminoglycoside phosphotransferase	APT family	
ODA54814.1	3.605781331	3.649808635	Chlorexidine efflux pump	Acel system (16)	
ODA56167.1	5.265550668	7.054151044	MFS transporter	MFS system	
ODA53764.1	12.16763575	14.92175121	OXA 24/40 β -lactamase	AbATCC329p/pMMCu3	Plasmid (5)
ODA53763.1	8.975633873	11.30715263	DNA replication protein A		
ODA53762.1	5.273985066	5.329333593	RepB family plasmid replication initiator		
ODA54084.1	3.511019975	3.547062538	CsuA protein	CsuABCDE (17, 18)	Biofilm (14)
ODA54083.1	3.199749378	3.259685195	CsuB protein		
ODA54082.1	2.575094974	2.584527435	CsuC protein		
ODA54081.1	2.810613341	2.819199271	CsuD protein		
ODA54080.1	2.782552791	2.791313686	CsuE protein		
ODA53940.1	2.037734523	2.053934504	Cytochrome <i>b</i>	Cytochrome operon (19–21)	Stress oxidative (ROS) (21)
ODA57053.1	2.173049691	2.184371809	Cytochrome <i>bd</i> biosynthesis protein		
ODA56663.1	2.405101873	2.428897655	Sodium/proline symporter		
ODA56171.1	10.75708444	13.32903693	Cytochrome <i>bd</i> biosynthesis protein		
ODA56172.1	10.35093438	12.86380541	Cytochrome <i>d</i> ubiquinol oxidase subunit		
ODA54604.1	10.07652823	12.56398102	Taurine ABC transporter substrate-binding	Taurine transporter (22, 23)	Electron transport
ODA54605.1	9.758316312	12.21616998	Taurine transporter-binding subunit (TauB)		
ODA54606.1	8.966908008	11.30350134	Taurine ABC transporter permease (TauC)		
ODA54607.1	10.85324686	13.44475271	Taurine dioxygenase (TauD)		
ODA55153.1	−6.486154998	−6.530626555	Hypothetical protein	Replication	ppGpp network (28) ^c
ODA54592.1	0.932475218	0.929842277	DNA polymerase I		
ODA54625.1	0.931688577	0.929428817	DNA polymerase III subunit alpha		
ODA54730.1	−1.77207536	−1.816317901	Response regulator		
ODA55878.1	0.500078184	0.506140675	50S ribosomal protein L17		
ODA55763.1	0.438241011	0.436148678	RNA polymerase subunit omega		
ODA55654.1	0.582523178	0.580921263	50S ribosomal protein L7/L12		
ODA55933.1	−0.523115918	−0.531876133	ATP synthase subunit beta	ATP metabolism	Energy production (31, 32) ^c
ODA55935.1	−0.570647356	−0.579254835	ATP synthase subunit alpha		
ODA54585.1	0.422390483	0.418615357	Transcription termination factor rho		

^aThe relative expression (expressed as fold change [FC]) of *abal* (3.05) and *abaR* (2.88) genes, determined by RT-PCR, indicated activation of the quorum-sensing system.

^bSanger sequencing of these genes from the Ab-2_clon_2010-CHLX strain, as well as of the regulatory genes *adeR* and *adeS*, did not show mutations with respect to the sequence of strain Ab-2_clon_2010.

^cGenes that belonged to the ppGpp network and energy production categories showed downregulation (FC, <1).

no. [ec00190](#) 3.6.3.14, ATP phosphohydrolases), in which the alpha/beta ATP synthase subunit and transcription termination factor rho were downregulated. Finally, energy production by ATP metabolism has been associated with the development of tolerant cells in *Escherichia coli* (31). Moreover, Wang et al., described how genes mapped in this pathway have an important role in the survival of clinical strains of *Staphylococcus aureus* (32).

The time-kill curves for strains Ab-2_clon_2010 and Ab-2_clon_2010-CHLX were performed following the indications of Hofsteenge and colleagues (33) in low-nutrient Luria-Bertani broth (LN-LB; 2 g/liter tryptone, 1 g/liter yeast extract, and 5 g/liter NaCl) (13, 16). The cultures were incubated for 4 h to ensure logarithmic growth, and CHLX (0.25× MIC) and IMP (10× MIC) were then added alone or in combination to the cultures. We observed a lower growth rate of the Ab-2_clon_2010 strain in the presence of CHLX than in its absence (Fig. 1), as well as faster growth rate in the presence of IMP. Interestingly, the time-kill curves for isolate Ab-2_clon_2010-CHLX showed a massive killing in the presence of IMP (Fig. 1). The results of RT-PCR analysis confirmed a lower expression of OXA_{24/40} β -lactamase and *abkA* antitoxin genes (FC, 0.06 and 0.04, respectively) in Ab-2_clon_2010-CHLX, as well as overexpression of the *abkB* toxin gene (FC, 2.77) relative to that in Ab-2_clon_2010 (known as the persistome) (34–36). This

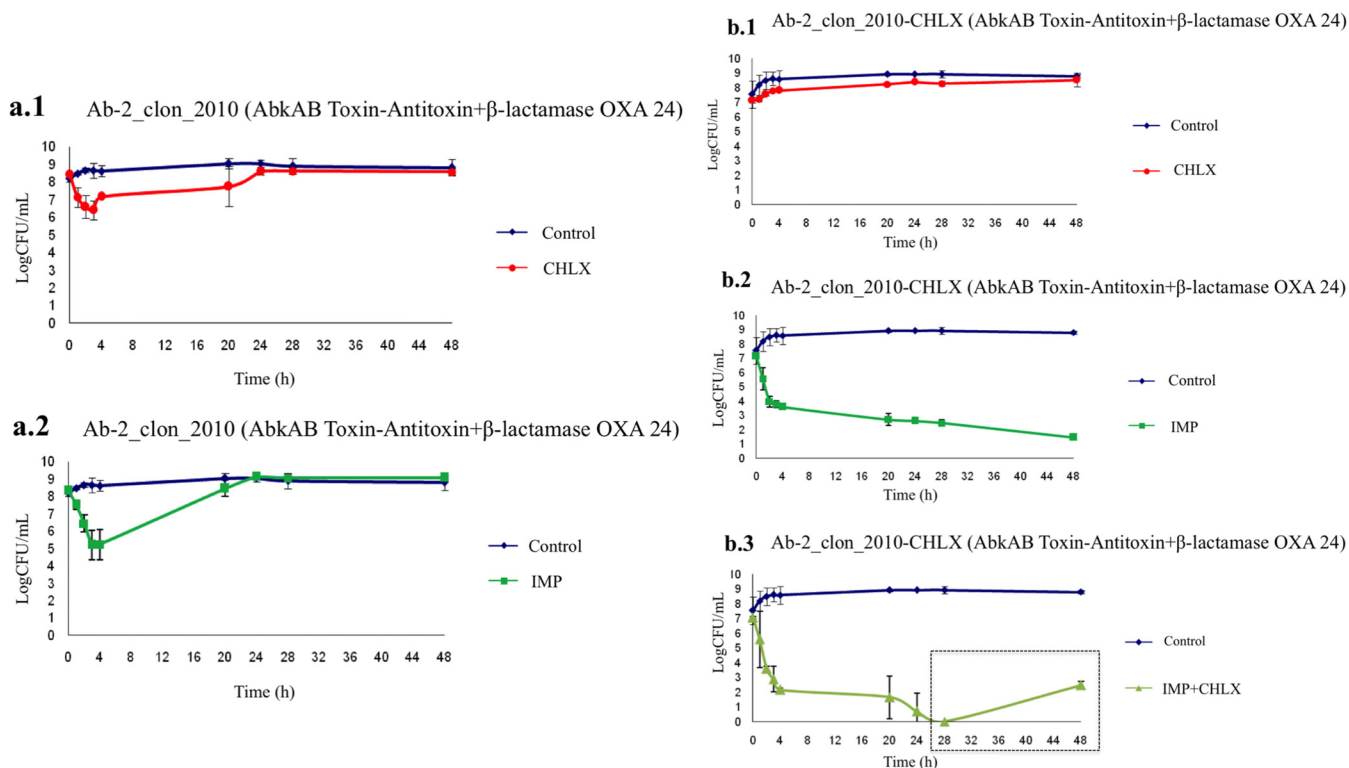


FIG 1 Time-kill curves in the presence of biocides (CHLX) and antibiotics (IMP) in Ab-2_clon_2010 (carbapenem-resistant) and Ab-2_clon_2010-CHLX isolates. Box in panel b.3, regrowth is due to putative reactivation of persister cells.

toxin protein belongs to the AbkAB toxin-antitoxin module in the AbATCC329p/pMCCU3 plasmid (12). Mosqueda et al. located the AbkB/AbkA TA system (the so-called SpITA) in the most prevalent plasmids (GenBank [KJ534568](#) and [KJ534569](#)) found in clinical isolates of *A. baumannii* (12, 37). Finally, we observed regrowth of persister cells in the Ab-2_clon_2010-CHLX isolate grown in the presence of IMP+CHLX for 28 h (Fig. 1). Moreover, we used two *A. baumannii* ATCC isolates as controls (both susceptible to carbapenems) whose complete genomes have been sequenced, *A. baumannii* strain ATCC 17978 (which harbors the AbkAB toxin-antitoxin system encoded by plasmid pAB2, GenBank number [CP000523.1](#)) and *A. baumannii* strain ATCC 19606 (which does not have this AbkAB toxin-antitoxin system). In Fig. 2, we observed that in the *A. baumannii* strain ATCC 17978, there was a reactivation of growth in the presence of IMP+CHLX for 28 h, in contrast to the lack of growth of the *A. baumannii* ATCC 19606 under the same conditions. These results of regrowth in the *A. baumannii* strain ATCC 17978 and in Ab-2_clon_2010-CHLX with IMP (10× MIC) and CHLX (0.25× MIC) at 48 h were confirmed by enzymatic analysis using the cell proliferation reagent WST-1 protocol (Roche, Germany) and calculating the serial dilutions of each culture (CFU/ml; Fig. 3).

In conclusion, this is the first study describing the important link between mechanisms of bacterial tolerance and persistence under chlorhexidine and imipenem pressure in a clinical isolate of *A. baumannii* ST-2 harboring the *bla*_{OXA 24/40} β-lactamase gene and *abkA/abkB* genes (toxin-antitoxin system) in a plasmid. The study of these mechanisms (bacterial tolerance and persistence) is key to the development of new anti-infective treatments which will allow for the eradication of multidrug resistant pathogens.

Accession number(s). The whole-genome sequence (WGS) studies of GEIH-2010 isolate Ab-2_clon_2010 comprise part of the II Spanish Multicenter Study. GEIH-REIPI *A. baumannii* 2000 to 2010 project (umbrella GenBank BioProject number [PRJNA422585](#)), as well as the transcriptomic results shown in GenBank BioProject

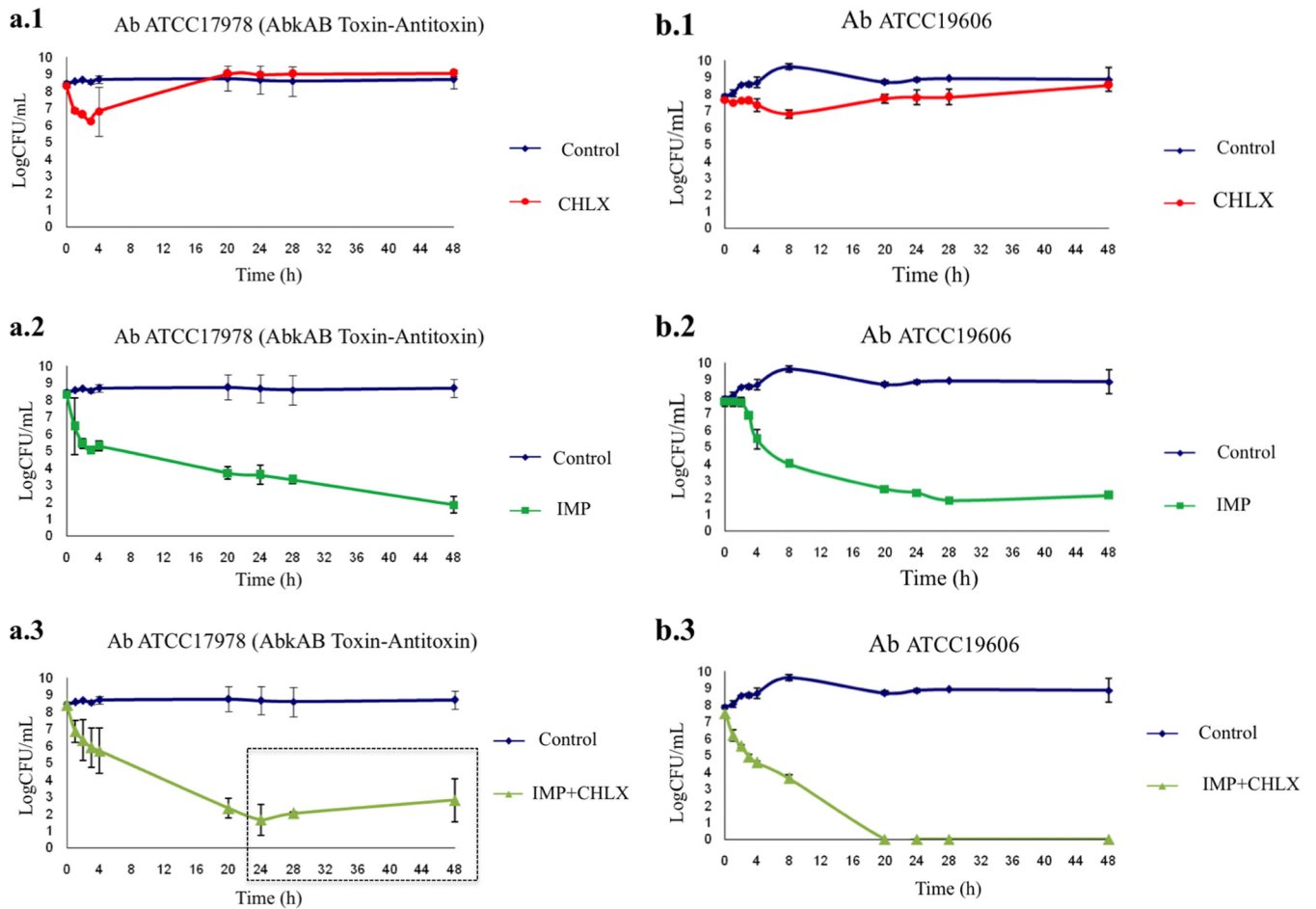


FIG 2 Time-kill curves in the presence of antibiotics (IMP) and biocides (CHLX) in susceptible *A. baumannii* ATCC strains. (a) *A. baumannii* strain ATCC 17978, which harbors the plasmid with the AbKA/AbkB toxin-antitoxin system (positive control); (b) *A. baumannii* ATCC 19606 strain without this AbKA/AbkB toxin-antitoxin system (negative control). Box in panel a.3, regrowth is due to putative reactivation of persister cells.

number [PRJNA433173](https://www.ncbi.nlm.nih.gov/geo/query/acc.cgi?acc=PRJNA433173) (GEO series number [GSE110207](https://www.ncbi.nlm.nih.gov/geo/query/acc.cgi?acc=GSE110207)). The WGSs of the *A. baumannii* strain ATCC 17978 complete genome and *A. baumannii* strain ATCC 19606 complete genome are deposited under GenBank accession numbers [CP018664.1](https://www.ncbi.nlm.nih.gov/genbank/CP018664) and [GG704575.1](https://www.ncbi.nlm.nih.gov/genbank/GG704575), respectively.

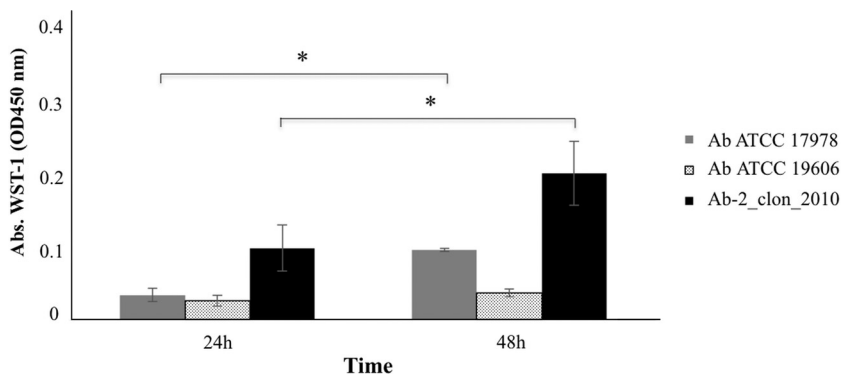


FIG 3 Enzymatic activity by colorimetric assay (WST-1-based) of the isolates *A. baumannii* ATCC 17978, *A. baumannii* ATCC 19606, and *A. baumannii* Ab-2_clon_2010-CHLX in the presence of IMP and CHLX. The x axis represents absorbance (optical density at 450 nm [OD₄₅₀]), and the y axis represents time (h). *, $P < 0.05$ (Student's *t* test).

SUPPLEMENTAL MATERIAL

Supplemental material for this article may be found at <https://doi.org/10.1128/AAC.00250-18>.

SUPPLEMENTAL FILE 1, PDF file, 0.2 MB.

ACKNOWLEDGMENTS

This study was funded by grants PI13/02390 and PI16/01163, awarded to M.T., and by grant PI11-02046, awarded to F.F.-C., within the State Plan for R+D+I 2013–2016 (National Plan for Scientific Research, Technological Development and Innovation 2008–2011) and cofinanced by the ISCIII-Deputy General Directorate of Evaluation and Promotion of Research—European Regional Development Fund “A Way of Making Europe” and the Instituto de Salud Carlos III FEDER, Spanish Network for the Research in Infectious Diseases (REIPI, grants RD12/0015/0010 and RD16/0016/0001), as well as by the Study Group on Mechanisms of Action and Resistance to Antimicrobials, GEMARA (SEIMC). M.T. was financially supported by the Miguel Servet Research Programme (SERGAS and ISCIII). L.F.-G. was financially supported by a predoctoral fellowship from the Xunta de Galicia (GAIN, Axencia de Innovación).

We declare that we have no competing interests.

REFERENCES

- Levin-Reisman I, Ronin I, Gefen O, Braniss I, Shoshan N, Balaban NQ. 2017. Antibiotic tolerance facilitates the evolution of resistance. *Science* 355:826–830. <https://doi.org/10.1126/science.aaj2191>.
- Cohen NR, Lobritz MA, Collins JJ. 2013. Microbial persistence and the road to drug resistance. *Cell Host Microbe* 13:632–642. <https://doi.org/10.1016/j.chom.2013.05.009>.
- Lewis K. 2007. Persister cells, dormancy and infectious disease. *Nat Rev Microbiol* 5:48–56. <https://doi.org/10.1038/nrmicro1557>.
- Lewis K. 2008. Multidrug tolerance of biofilms and persister cells. *Curr Top Microbiol Immunol* 322:107–131.
- Brauner A, Fridman O, Gefen O, Balaban NQ. 2016. Distinguishing between resistance, tolerance and persistence to antibiotic treatment. *Nat Rev Microbiol* 14:320–330. <https://doi.org/10.1038/nrmicro.2016.34>.
- Harms A, Maisonneuve E, Gerdes K. 2016. Mechanisms of bacterial persistence during stress and antibiotic exposure. *Science* 354:aaf4268. <https://doi.org/10.1126/science.aaf4268>.
- Vila J, Pachón J. 2011. *Acinetobacter baumannii* resistant to everything: what should we do? *Clin Microbiol Infect* 17:955–956. <https://doi.org/10.1111/j.1469-0691.2011.03566.x>.
- Gupta V. 2008. Metallo beta lactamases in *Pseudomonas aeruginosa* and *Acinetobacter* species. *Expert Opin Invest Drugs* 17:131–143. <https://doi.org/10.1517/13543784.17.2.131>.
- Wood TK, Knabel SJ, Kwan BW. 2013. Bacterial persister cell formation and dormancy. *Appl Environ Microbiol* 79:7116–7121. <https://doi.org/10.1128/AEM.02636-13>.
- Fernández-Cuenca F, Tomás M, Caballero-Moyano FJ, Bou G, Martínez-Martínez L, Vila J, Pachón J, Cisneros JM, Rodríguez-Baño J, Pascual Á; Spanish Group of Nosocomial Infections (GEIH) from the Spanish Society of Clinical Microbiology and Infectious Diseases (SEIMC) and the Spanish Network for Research in Infectious Diseases (REIPI); Spanish Group of Nosocomial Infections GEIH from the Spanish Society of Clinical Microbiology and Infectious Diseases SEIMC and the Spanish Network for Research in Infectious Diseases REIPI. 2015. Reduced susceptibility to biocides in *Acinetobacter baumannii*: association with resistance to antimicrobials, epidemiological behaviour, biological cost and effect on the expression of genes encoding porins and efflux pumps. *J Antimicrob Chemother* 70:3222–3229. <https://doi.org/10.1093/jac/dkv262>.
- López M, Mayer C, Fernández-García L, Blasco L, Muras A, Ruiz FM, Bou G, Otero A, Tomás M; GEIH-GEMARA (SEIMC). 2017. Quorum sensing network in clinical strains of *A. baumannii*: AidA is a new quorum quenching enzyme. *PLoS One* 12:e0174454. <https://doi.org/10.1371/journal.pone.0174454>.
- Mosqueda N, Gato E, Roca I, López M, de Alegría CR, Fernández Cuenca F, Martínez-Martínez L, Pachón J, Cisneros JM, Rodríguez-Baño J, Pascual A, Vila J, Bou G, Tomás M; GEIH-GEMARA (SEIMC) and REIPI. 2014. Characterization of plasmids carrying the *bla*_{OXA-24/40} carbapenemase gene and the genes encoding the AbkA/AbkB proteins of a toxin/antitoxin system. *J Antimicrob Chemother* 69:2629–2633. <https://doi.org/10.1093/jac/dku179>.
- Rumbo C, Gato E, López M, Ruiz de Alegría C, Fernández-Cuenca F, Martínez-Martínez L, Vila J, Pachón J, Cisneros JM, Rodríguez-Baño J, Pascual A, Bou G, Tomás M; Spanish Group of Nosocomial Infections and Mechanisms of Action and Resistance to Antimicrobials (GEIH-GEMARA); Spanish Society of Clinical Microbiology and Infectious Diseases (SEIMC); Spanish Network for Research in Infectious Diseases (REIPI). 2013. Contribution of efflux pumps, porins, and β -lactamases to multidrug resistance in clinical isolates of *Acinetobacter baumannii*. *Antimicrob Agents Chemother* 57:5247–5257. <https://doi.org/10.1128/AAC.00730-13>.
- Van Acker H, Van Dijck P, Coenye T. 2014. Molecular mechanisms of antimicrobial tolerance and resistance in bacterial and fungal biofilms. *Trends Microbiol* 22:326–333. <https://doi.org/10.1016/j.tim.2014.02.001>.
- Langevin AM, Dunlop MJ. 2017. Stress introduction rate alters the benefit of AcrAB-TolC efflux pumps. *J Bacteriol* 200:e00525-17. <https://doi.org/10.1128/JB.00525-17>.
- Hassan KA, Liu Q, Henderson PJ, Paulsen IT. 2015. Homologs of the *Acinetobacter baumannii* Acel transporter represent a new family of bacterial multidrug efflux systems. *mBio* 6:e01982-14. <https://doi.org/10.1128/mBio.01982-14>.
- Tomaras AP, Dorsey CW, Edelmann RE, Actis LA. 2003. Attachment to and biofilm formation on abiotic surfaces by *Acinetobacter baumannii*: involvement of a novel chaperone-usher pili assembly system. *Microbiology* 149:3473–3484. <https://doi.org/10.1099/mic.0.26541-0>.
- Houari A, Di Martino P. 2007. Effect of chlorhexidine and benzalkonium chloride on bacterial biofilm formation. *Lett Appl Microbiol* 45:652–656. <https://doi.org/10.1111/j.1472-765X.2007.02249.x>.
- Braoudaki M, Hilton AC. 2004. Adaptive resistance to biocides in *Salmonella enterica* and *Escherichia coli* O157 and cross-resistance to antimicrobial agents. *J Clin Microbiol* 42:73–78. <https://doi.org/10.1128/JCM.42.1.73-78.2004>.
- Turner AK, Barber LZ, Muhammad S, Jones MA, Lovell MA, Hulme S, Barrow PA. 2003. Contribution of proton-translocating proteins to the virulence of *Salmonella enterica* serovars Typhimurium, Gallinarum, and Dublin in chickens and mice. *Infect Immun* 71:3392–3401. <https://doi.org/10.1128/IAI.71.6.3392-3401.2003>.
- Grant SS, Hung DT. 2013. Persistent bacterial infections, antibiotic tolerance, and the oxidative stress response. *Virulence* 4:273–283. <https://doi.org/10.4161/viru.23987>.
- Tara Rema PM, Lawrence JR, Vidovic S, Leppard GG, Reid M, Korber DR. 2015. Proteomic analyses of chlorhexidine tolerance mechanisms in *Delftia acidovorans* biofilms. *mSphere* 1:e00017-15. <https://doi.org/10.1128/mSphere.00017-15>.
- Wang D, Seeve C, Pierson LS, Pierson EA. 2013. Transcriptome profiling

- reveals links between ParS/ParR, MexEF-OprN, and quorum sensing in the regulation of adaptation and virulence in *Pseudomonas aeruginosa*. *BMC Genomics* 14:618. <https://doi.org/10.1186/1471-2164-14-618>.
24. Clemmer KM, Bonomo RA, Rather PN. 2011. Genetic analysis of surface motility in *Acinetobacter baumannii*. *Microbiology* 157:2534–2544. <https://doi.org/10.1099/mic.0.049791-0>.
 25. Luo LM, Wu LJ, Xiao YL, Zhao D, Chen ZX, Kang M, Zhang Q, Xie Y. 2015. Enhancing pili assembly and biofilm formation in *Acinetobacter baumannii* ATCC19606 using non-native acyl-homoserine lactones. *BMC Microbiol* 15:62. <https://doi.org/10.1186/s12866-015-0397-5>.
 26. Avarbock A, Avarbock D, Teh JS, Buckstein M, Wang ZM, Rubin H. 2005. Functional regulation of the opposing (p)ppGpp synthetase/hydrolase activities of RelMtb from *Mycobacterium tuberculosis*. *Biochemistry* 44: 9913–9923. <https://doi.org/10.1021/bi0505316>.
 27. Hauryliuk V, Atkinson GC, Murakami KS, Tenson T, Gerdes K. 2015. Recent functional insights into the role of (p)ppGpp in bacterial physiology. *Nat Rev Microbiol* 13:298–309. <https://doi.org/10.1038/nrmicro3448>.
 28. Cashel M. 1969. The control of ribonucleic acid synthesis in *Escherichia coli*. IV. Relevance of unusual phosphorylated compounds from amino acid-starved stringent strains. *J Biol Chem* 244:3133–3141.
 29. Chatterji D, Fujita N, Ishihama A. 1998. The mediator for stringent control, ppGpp, binds to the beta-subunit of *Escherichia coli* RNA polymerase. *Genes Cells* 3:279–287. <https://doi.org/10.1046/j.1365-2443.1998.00190.x>.
 30. Chatterji D, Ojha AK. 2001. Revisiting the stringent response, ppGpp and starvation signaling. *Curr Opin Microbiol* 4:160–165. [https://doi.org/10.1016/S1369-5274\(00\)00182-X](https://doi.org/10.1016/S1369-5274(00)00182-X).
 31. Keren I, Shah D, Spoering A, Kaldalu N, Lewis K. 2004. Specialized persister cells and the mechanism of multidrug tolerance in *Escherichia coli*. *J Bacteriol* 186:8172–8180. <https://doi.org/10.1128/JB.186.24.8172-8180.2004>.
 32. Wang W, Chen J, Chen G, Du X, Cui P, Wu J, Zhao J, Wu N, Zhang W, Li M, Zhang Y. 2015. Transposon mutagenesis identifies novel genes associated with *Staphylococcus aureus* persister formation. *Front Microbiol* 6:1437. <https://doi.org/10.3389/fmicb.2015.01437>.
 33. Hofsteenge N, Van Nimwegen E, Silander OK. 2013. Quantitative analysis of persister fractions suggests different mechanisms of formation among environmental isolates of *E. coli*. *BMC Microbiol* 13:25. <https://doi.org/10.1186/1471-2180-13-25>.
 34. Rotem E, Loinger A, Ronin I, Levin-Reisman I, Gabay C, Shoshani N, Biham O, Balaban NQ. 2010. Regulation of phenotypic variability by a threshold-based mechanism underlies bacterial persistence. *Proc Natl Acad Sci U S A* 107:12541–12546. <https://doi.org/10.1073/pnas.100433107>.
 35. Butt A, Higman VA, Williams C, Crump MP, Hemsley CM, Harmer N, Titball RW. 2014. The HicA toxin from *Burkholderia pseudomallei* has a role in persister cell formation. *Biochem J* 459:333–344. <https://doi.org/10.1042/BJ20140073>.
 36. Dörr T, Vulić M, Lewis K. 2010. Ciprofloxacin causes persister formation by inducing the TisB toxin in *Escherichia coli*. *PLoS Biol* 8:e1000317. <https://doi.org/10.1371/journal.pbio.1000317>.
 37. Fernández-García L, Blasco L, Lopez M, Bou G, García-Contreras R, Wood T, Tomas M. 2016. Toxin-antitoxin systems in clinical pathogens. *Toxins (Basel)* 8:E227. <https://doi.org/10.3390/toxins8070227>.