

Erratum

Responses of intra-abdominal pressure and abdominal muscle activity during dynamic trunk loading in man

A. G. Cresswell

Department of Physiology III, Karolinska Institute, Box 5626, S-11486, Stockholm, Sweden

Eur J Appl Physiol (1993) 66:315-320

The figures on pp. 317 and 318 were incorrect as printed. Below they are reprinted correctly.

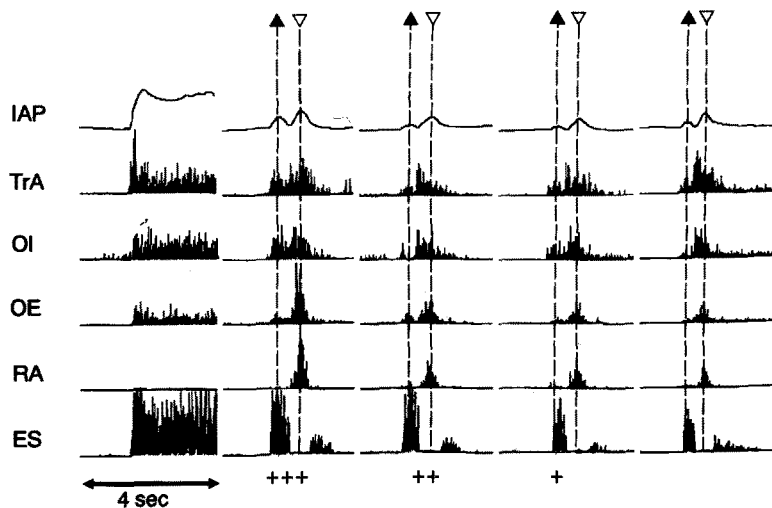


Fig. 3. Trunk extensions under inertia loading. Subject, descriptions, scaling and loading levels are the same as for Fig. 2

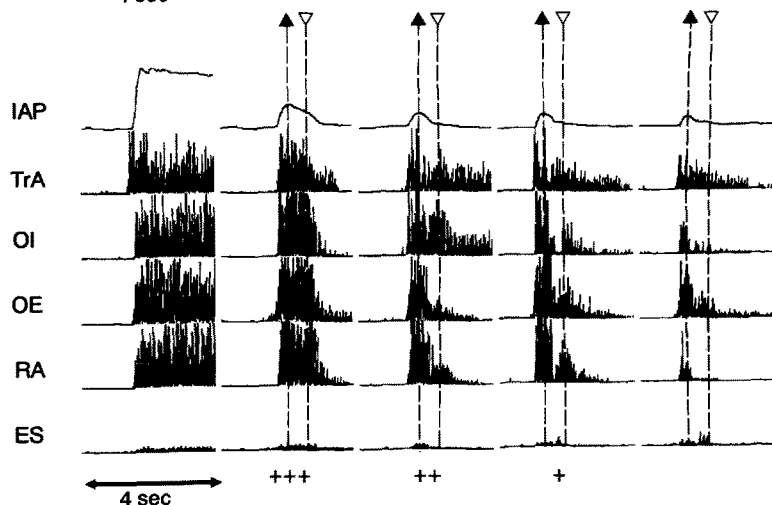


Fig. 4. Trunk flexions under friction loading. Subject, descriptions, scaling and loading levels are the same as for Fig. 2

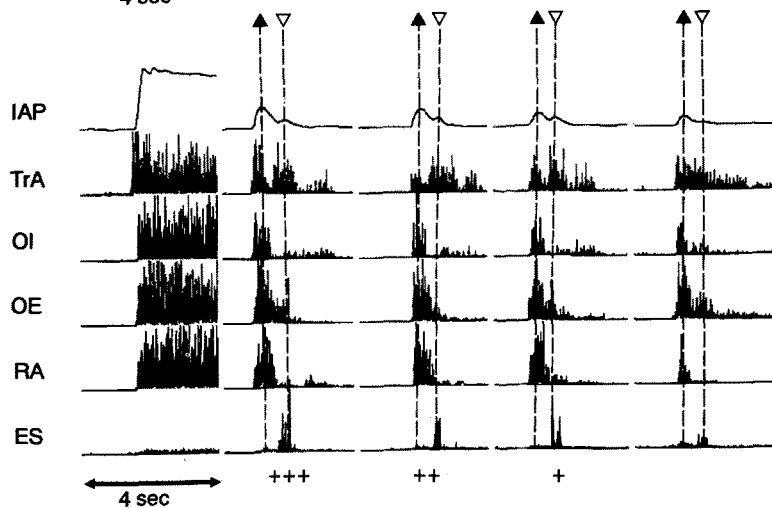


Fig. 5. Trunk flexions under inertia loading. Subject, descriptions, scaling and loading levels are the same as for Fig. 2