

Revenue Management: A Real Options Approach

C.K. Anderson

Richard Ivey School of Business

The University of Western Ontario, London, Ontario, Canada, N6A 3K7
canderson@ivey.ca

M. Davison and H. Rasmussen

Department of Applied Mathematics

The University of Western Ontario, London, Ontario, Canada, N6A 5B7

January 13, 2004

Subject Classification: Operations Management. Finance - securities
and real options. Industries: transportation - car rentals and airlines.

Revenue Management: A Real Options Approach

Abstract

Revenue management is the process of actively managing inventory or capacity to maximize revenues. The active management typically occurs through managerial levers such as price, promotion or availability. We present a novel real options approach to revenue management that is specifically suited to the car rental business. We illustrate the concept with actual car rental data. The model produces minimally acceptable prices and inventory release quantities (number of cars available for rent at a given price) as a function of remaining time and available inventory. The pricing and inventory release recommendations of the developed model confirm earlier empirical analysis that suggested current practises discount too deeply early in the booking cycle.

1 Introduction

In this paper we derive a new revenue management procedure for the rental car industry. This procedure is obtained by considering the operator of a car rental business to be the holder of a real option very similar to the swing option used in the energy industry. This analogy allows us to determine, under reasonable and broad assumptions, both the value of such a business and the optimal way to manage it.

Revenue management is a process of managing perishable inventories to maximize the total revenue from these inventories. The concept has its origins in the airline industry where, upon departure, unfilled seats are lost revenue opportunities. Revenue management is not limited to airlines, but suitable for numerous retail and service industries, including advertising, car rentals, cruise ships and flexible manufacturing (Harris & Peacock, 1995).

In recent years a new theory of pricing and operating assets in the face of uncertainty and in the presence of some flexibility in operating strategies has been developed. This is the theory of real options (Dixit & Pindyck, 1994) and (Amram & Kulatilaka, 1999). The theory of real options in turn uses the framework of modern financial options pricing to frame and solve its problems. This formulation allows these problems to be framed as partial differential equations, normally of diffusive type. For general mathematical references on options pricing see (Merton, 1990), (Hull, 2003) and (Wilmott, 2000).

Different types of real options exist, depending on the flexibility possessed by the business operator. For example, consider a project with known start up costs that may be initiated any time in the next year. Such a project may be modelled as an American call option - the real option holder is allowed to “buy into” the project or exercise his option on any date in the next year. Pricing such an option requires a decision about the optimal way in which to exercise it. The two problems are solved in tandem.

We show that the car rental problem corresponds to a different kind of option. We consider the problem of booking cars for a particular future date. The price at which cars may be reserved fluctuates with both deterministic and random components. Now the “exercise” decision occurs at every instant - should I allow bookings at this price or not? Each exercise decision affects subsequent ones, for every car that gets reserved decreases the number of cars which may be rented in the future. It turns out that this problem is very similar to the problem of pricing the “swing” contracts prevalent in the electricity and gas industries (Keppo, 2002) and (Jaillet et al., 2001).

As an example of a swing option contract consider a typical natural gas supply contract. Under such a contract the buyer takes a certain base supply every week at a preset price. The buyer is also able, at his option, to

decide each week whether or not he would like to buy more gas at another preset price. If he does decide to take more gas he is said to “swing up”. The complicating factor here is that the option holder is given only a finite number of opportunities to swing up. Pricing this option requires an exercise strategy which tells the option holder how best to deploy these swing opportunities.

In this paper we show how a car rental operator may be considered as the holder of a swing-like option on car rentals. We are able to solve the resulting set of equations to determine both the operator’s optimal rental strategy and the value of the business to the operator.

In §2 we provide a detailed description of revenue management in the car rental industry. In §3 we derive a partial differential equation model to describe the financial aspects of a car rental business. A numerical procedure for extracting generally applicable model solutions is discussed in §4. In §5 we present analytic solutions for some special cases of this model. We use the analytic results to validate the model of §4. Numerical examples for a general case are presented in §6. In the final section we discuss model extensions and future work.

2 Revenue Management in Car Rentals

Revenue management has been a topic of research and practical interest for airlines since the early 1970’s. Revenue management is a process of controlling inventories, enabling the airline to maximize its profits. For an airline, controlling inventory equates to determining how many seats should be made available to willing purchasers for reservation, at what prices. In the short term, most of an airline’s costs are fixed with very little or negligible variable costs. Thus, maximizing revenue becomes a close proxy for maximizing

profit.

The concept of revenue management is not specific to the airline industry. It has been applied to numerous other businesses which have similar characteristics. These include: car rental, broadcasting, cruise lines, internet service provision, lodging, and railways. Common characteristics of yield management practise are (Kimes, 1989): ability to segment markets, relatively fixed capacity, perishable inventory, product sold in advance, fluctuating demand, and low marginal sales cost/high marginal capacity change cost.

In 1992, R.L. Crandall, Chairman and CEO of AMR (American's parent company) estimated that "yield (revenue) management has generated \$1.4 billion in incremental revenue in the last three years" (Smith et al., 1992). By 1998 Tom Cook, President of SABRE Decision Technologies, had increased the estimated impact to "almost \$1 billion in annual incremental revenue" (Cook, 1998).

Since the early 1990's the car rental industry has also given attention towards revenue management. Most work in the area of car rental revenue management has been the application of airline revenue management methods to the car rental setting. Carroll and Grimes (1995) and Geraghty and Johnson (1997) provide accounts of the state-of-the-art in car rental revenue management.

One of the distinct differences of car rental revenue management from its application to airlines is the degree to which price changes. Airlines typically have several discrete price classes, across which prices are fairly constant. These price or fare classes have often have restrictions on advanced booking or Saturday night stay in an effort to segment business and leisure travellers. Airlines change prices by opening or closing these different fare classes. Car rental firms also have discrete price classes for the different types

of cars (economy versus luxury) but actively change the prices within these classes on a daily basis. Blair and Anderson (2002) give an accurate account of pricing activity at Dollar Rent A Car. The active or dynamic price changes in car rental revenue management add a new complexity to airline revenue management.

Weatherford and Bodily (1992) and McGill and VanRyzin (1999) summarize recent research in airline revenue management. Airline revenue management typically looks at allocating plane capacity across a finite set of fare classes (across which price is fairly constant). Early methods of application (Littlewood, 1972) and (Belobaba, 1987) involved newsboy-like heuristics to partition capacity across fare classes. These methods have been extended to include other elements of buyer behaviour such as diversion to other fare classes (Pfeifer, 1989) and (Belobaba & Weatherford, 1996). A second stream of research has looked at the complexities resulting from hub-and-spoke networks. Early mathematical programming approaches (Glover et al., 1982) included full passenger itineraries from a deterministic standpoint, with later approaches (Williamson, 1992), (Smith & Penn, 1988), and (Simpson, 1985) using dual prices in the allocation decision.

More closely related to car rental revenue management is the field of dynamic pricing. Typically dynamic pricing approaches assume that demand is a stochastic function of price, and that only one price is available (posted) at a given time. Gallego and VanRyzin (1994) look at dynamic pricing of inventories, providing structural results for certain classes of stochastic demand. They later extend their results to network effects (Gallego & VanRyzin, 1997). Feng and Gallego (1995) provide a dynamic pricing approach that fits the airline model more closely. They model cases with two predetermined prices where demand follows a Poisson process. Later they extend their work to allow for multiple classes (Feng & Xiao, 2000).

We develop a new approach to dynamic pricing, one in which price itself is a random variable. Current practice assumes prices are set by firms to control demand. We illustrate that the commodity nature of the rental car business requires a more detailed approach to modeling price as an exogenous variable.

3 Pricing Model

The car rental industry is not as price sensitive as the airline industry. Price changes do generate subtle changes in demand, but what is more important is one car rental firm's price against its competition's (Blair, 2002). Figure 1 is a simplified illustration of price elasticity within the car rental industry. Price elasticity, the percentage change in demand per percentage change in price describes the sensitivity of sales volume to price changes. In Figure 1, demand is relatively inelastic over price changes from P_2 to P_3 as very little additional sales result (Δ_{Q2} is small), while very elastic from P_1 to P_2 (Δ_{Q1} is quite large). Over the range P_1 to P_2 the price has crossed a competitor's price P_C , generating the volume increase (decrease) whereas from P_2 to P_3 it is still priced between two competitors, or already has the lowest price.

For simplicity, we consider a single type of business; car rental for equal duration (e.g. daily, weekly or over the weekend) on an average daily revenue basis. All the cars are assumed identical so that at any given time the price is uniform across all cars available for rent at the same point in the future. The window over which reservations are accepted is of duration T , this window is typically of the order 90 days. We suppose that during the period $0 \leq t \leq T$ cars can be reserved for use on the first day after $t = 0$ but that the full rental cost is paid at the time of reservation. At time $t = T$ reservations stop and

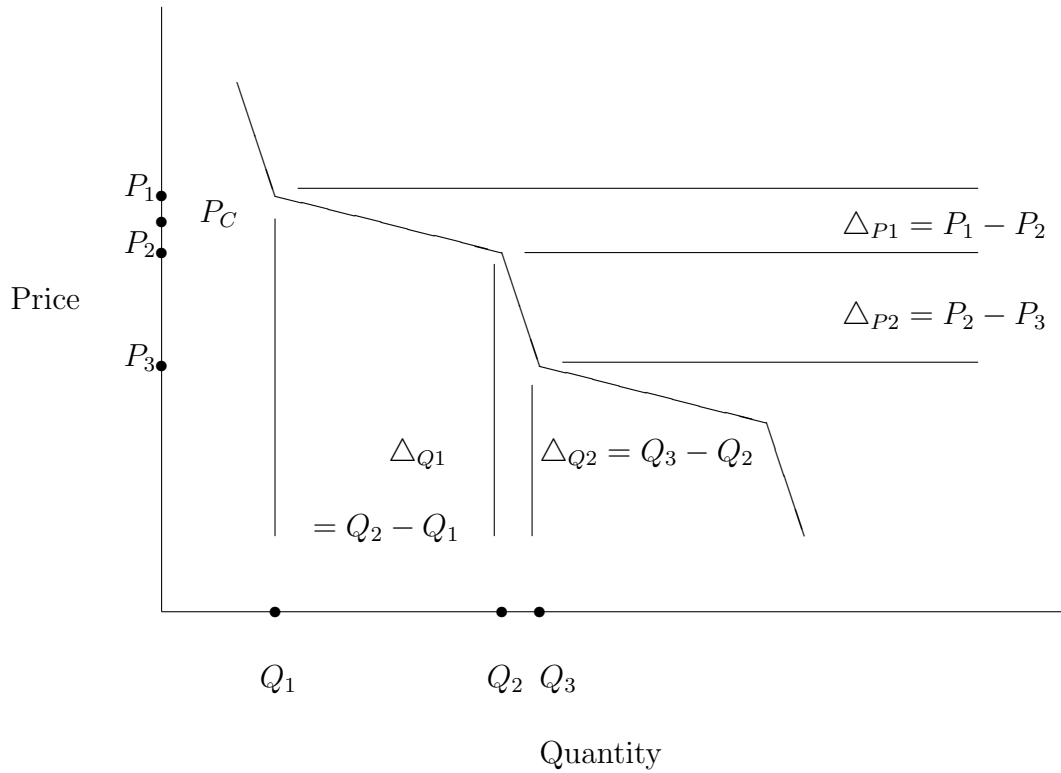


Figure 1: Car Rental Price Elasticity

no unreserved cars can be rented, representing a lost revenue opportunity.

We will derive a model of this process. This model will be discrete in that we divide the time period into I subintervals. For example the period of three months may be divided into 12 one week intervals, or more representative of current practice into 90, daily periods (Geraghty & Johnson, 1997) allowing for daily price changes. We utilize subintervals of equal length, noting that the hypothesis of equal intervals may be relaxed at little

computational cost. In addition we will separately follow each available car, solving a subproblem for each car for each subperiod. We require a submodel for the demand for cars as a function of time.

Given the response to price as shown in Figure 1 we will model price as a random process, in essence modeling the rental car firm as a price taker, unable to arbitrarily price, rather having to price relative to competition. We will assume that the price to rent a car can be modeled by a general stochastic differential equation of the form

$$dP = \mu(P, t)dt + b(P, t)dX, \quad (1)$$

where $P = P(t)$ is the price of a one day rental, t is the time, and μ and b are given functions of P and t .

In the PDE framework which follows we have wide flexibility to choose μ and b to fit the data. The numerical solution of the differential equations will not be appreciably more difficult for most reasonable choices of μ and b . To be concrete in what follows, we choose

$$\mu(P, t) = \alpha(L(t) - P), \quad (2)$$

$$b(P, t) = \sigma P. \quad (3)$$

Equation (2) states that the random process governing rental cars is mean-reverting with rate α to a time-dependent mean price $L(t)$. Mean reversion appears a reasonable model as, while rental car prices fluctuate from day to day, they seem to be bounded both below and above. The lower bound exists because prices cannot stay significantly below the marginal cost of renting the car for too long or the rental operator would have to exit the

market. The upper bound exists both because of the competitive, winner take all, nature of the rental car market and because of the price elasticity of consumers. Both of these effects support a mean reverting price model. We choose (3) with constant volatility parameter σ to represent a constant relative fluctuation in the prices, σ may be constant or a function of time without any change in formulation. This price process is really for the price of a reservation, the price paid in the future for a reservation today. The model is then similar to a forward price for a commodity, which are also often modelled as mean reverting.

The only choice which remains is how to represent the mean rental car price as a function of days before rental. We choose a simple linear increasing function of time for this. To motivate this choice, we examine Figure 2 which plots the average realized price per day of single day, three-day and week long car rentals for Dollar Rent A Car against weeks before pickup. This data, provided by Dollar, is for economy cars for weekday pickup rented at Denver International airport during calendar year 2001. In every case a subtle but noticeable upward trend in the average rental price is observed. In any event, the large fluctuations in the dataset we present make it difficult to justify a more complicated model for the mean.

Consider a time interval $0 \leq t \leq T$ such that $t = 0$ corresponds to the start of the reservation time and $t = T$ to the time of rental. We suppose that we have M cars to rent and that they can be rented at a daily varying price given by the stochastic differential equation (1). The number of cars available at the start of the booking cycle, $t = 0$, will be both a function of fleet size and how that fleet is allocated across different lengths-of-rent, typically determined using linear programming (Geraghty & Johnson, 1997). Linear programming is used to maximize expected revenue by allocating cars to the different lengths-of-rent, while constraining the allocation such that allocated cars (by length-of-rent class) is no more than expected demand,

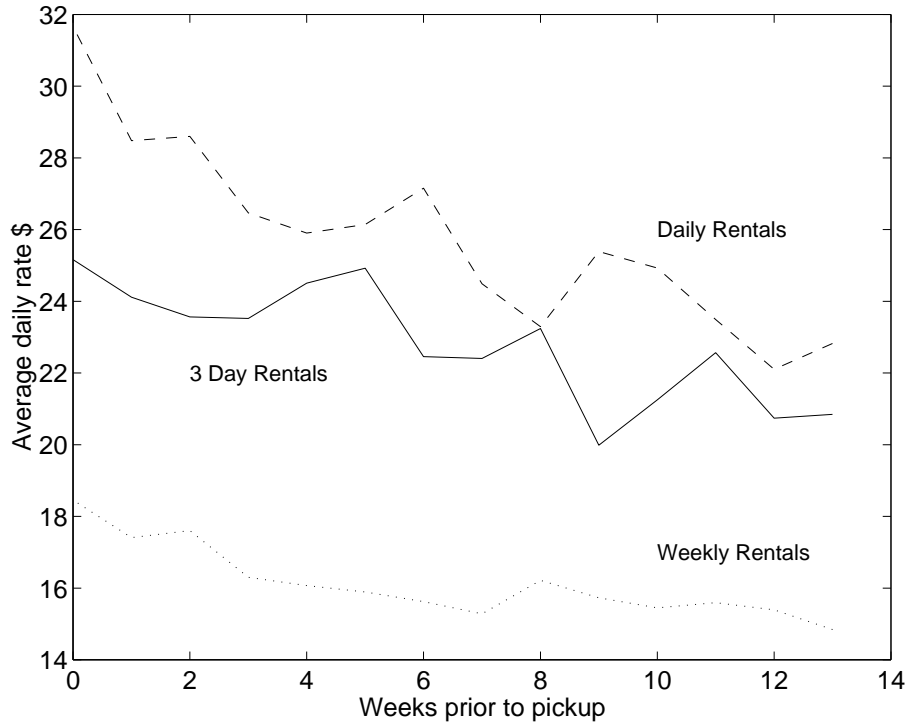


Figure 2: Average Daily Rental Rates - weekday pickup for Denver economy cars

and total cars allocated no more than available fleet. We suppose that cars can only be rented at fixed intervals given by $0 < t_1 < t_2 < \dots < t_N < T$ where $t_j = j * \Delta t$. The total number of cars that can be rented in a period (the demand) is a given function of price $F(P)$. For period j , for generality, we suppose both additive forms of demand

$$F(P_j) = \beta_0 + \beta_1 * P_j$$

and multiplicative

$$F(P_j) = \beta_0 * P_j^{\beta_1}$$

with coefficients, β_0 and β_1 constant or indexed with time.

Write the value of the cash flow for the remaining cars as

$$V_m^j$$

at the beginning of a time interval j where m cars have been rented. We now consider the interval $t_j \leq t \leq t_{j+1}$ where we will be renting cars at $t = t_{j+1}$. The car rental firm is faced with the decision to accept a reservation or wait for potential future (higher) revenues. The firm has the option of renting or holding the car.

Since the price is given by a stochastic differential equation, the cash value V_m^j can be considered as a European option starting at $t = t_j$ with a payout of ϕ at $t = t_{j+1}$. It is a European option as we are assuming it can be exercised only at time $t = t_{j+1}$. If we rent a car at t_{j+1} the expected cash flow is given by

$$\phi = V_{m+1}^{j+1} + P_{j+1},$$

where P_{j+1} is the rental price we get when the car is picked up (rented) and V_{m+1}^{j+1} is the expected future cash flow from the remaining cars. In general if we rent k cars the payout is

$$\phi = V_{m+k}^{j+1} + kP_{j+1},$$

where $m + k \leq M$, i.e. we cannot rent more cars than we have available. If we do not rent any cars the payout is just the cash flow at t_{j+1} , i.e. V_m^{j+1} . Thus the complete payout at t_{j+1} is

$$\phi = \max(V_m^{j+1}, V_{m+1}^{j+1} + P_{j+1}, V_{m+2}^{j+1} + 2P_{j+1}, \dots, V_{m+k}^{j+1} + kP_{j+1}), \quad (4)$$

with $m + k \leq M$ and $k \leq F(P_{j+1})$, i.e. we cannot rent more cars than we have, and the number we rent, k , is limited by demand at price P_{j+1} , $k \leq F(P_{j+1})$.

For the final period $j = N$ the payout is just the number of cars that can still be rented out, i.e.

$$\phi = kP_N,$$

where $m + k \leq M$ and $k \leq F(P_N)$.

We can now represent the problem as a collection of subproblems; this is shown on Figure 3 as a grid with $0 \leq j \leq 4$ and $0 \leq m \leq 3$. For each cell in the grid we can derive a Black-Scholes like partial differential equation. We can use the payout at the right hand side of the cell to calculate the value at the left hand side. This standard derivation may be found for instance in Dixit and Pindyck (1994). To illustrate this, consider the cell that corresponds to $j = 3$ and $m = 1$. Here the payout is

$$\phi = \max(V_1^4, V_2^4 + P_4, V_3^4 + 2P_4). \quad (5)$$

We use this as the initial condition for an equation for V_1^3

$m \setminus j$	0	1	2	3	4
0					
1					
2					
3					
	t_1	t_2	t_3	t_4	T

Figure 3: Subproblem Layout

Now consider a general cell located between $t_j \leq t \leq t_{j+1}$ and $0 \leq m \leq M$. Using the pricing model (1) we can develop the governing partial differential equation for the cash flow $V(P, t)$.

Starting with a model for rental prices P ,

$$dP = \mu(P, t)dt + b(P, t)dX,$$

the goal is to determine the value of the option to rent the car at time t given that if it is not rented at time T a revenue opportunity is lost, this option value is $V(P, t; T)$.

If this were a financial option we could establish a hedging argument to price this in a risk-neutral measure. This argument may be expressed in PDE form by a simple application of Bellman's principle using a risk-free discount rate r (Dixit & Pindyck, 1994)

$$\frac{\partial V}{\partial t} + \frac{1}{2}b^2 \frac{\partial^2 V}{\partial P^2} + \mu \frac{\partial V}{\partial P} - rV = 0. \quad (6)$$

However, unlike financial options, it is less clear that risk can be hedged away in this setting. Perhaps something could be done along the lines of hedging mid-size cars against luxury cars, but there are practical difficulties with this idea. We can, however incorporate a risk-adjustment as follows. We use a Sharpe ratio $\lambda = \frac{\mu-r}{\sigma}$ to denote the riskiness of the investment, we derive a PDE using Bellman's principle. Thus pricing in a risk neutral measure corresponds to $\lambda = 0$, and recovers the earlier PDE (Equation 6)

$$\frac{\partial V}{\partial t} + \frac{1}{2}b^2 \frac{\partial^2 V}{\partial P^2} + (\mu - \lambda b) \frac{\partial V}{\partial P} - rV = 0. \quad (7)$$

In our model of rental car prices $b = \sigma P$. Now,

$$\frac{\partial V}{\partial t} + \frac{1}{2}\sigma^2 P^2 \frac{\partial^2 V}{\partial P^2} + (\mu - \lambda \sigma P) \frac{\partial V}{\partial P} - rV = 0, \quad (8)$$

where λ is the market price of risk.

If we set $\lambda = 0$ then the solution follows that of a risk neutral or expected value maximizing decision maker. Note that our numerical results indicate that the solution is quite insensitive to the choice of λ . With $\lambda = 0$ and equation (2) we have $\mu = \alpha(L(t) - P)$. We will replace the time variable t with a local time variable τ within the rectangle which starts at t_{j+1} and ends at t_j . We also replace the variable t with $t_{j+1} - \tau$ in order to get a forward problem. Thus the governing partial differential equation becomes

$$\frac{\partial V}{\partial \tau} = \frac{1}{2}\sigma^2 P^2 \frac{\partial^2 V}{\partial P^2} + \alpha(L - P) \frac{\partial V}{\partial P} - rV \quad (9)$$

Here $V_m(P, j\Delta t) = V_m^j(P)$ and for convenience $L(t)$ is expressed as L .

The initial condition for this equation which is obtained from (4) is

$$V(P, 0) = \max(V_m^{j+1}, V_{m+1}^{j+1} + P_{j+1}, V_{m+2}^{j+1} + 2P_{j+1}, \dots, V_{m+k}^{j+1} + kP_{j+1}), \quad (10)$$

with $m + k \leq M$ and $k \leq F(P_{j+1})$.

We also require boundary conditions. The situation at $P = 0$ is quite interesting and the analysis outlined below is similar to that treated by d'Halluin and Labahn (2001) in their discussion of the single factor interest rate model.

If we let $P \rightarrow 0$, equation (9) becomes

$$\frac{\partial V}{\partial t} = \alpha L \frac{\partial V}{\partial P} - rV. \quad (11)$$

Since $\alpha L > 0$ this is a hyperbolic equation with outgoing characteristic, so we can expect that no boundary condition is required at $P = 0$. However, for finite but small values of P equation (9) has a diffusive term and the question is whether this term tends to zero sufficiently rapidly that no boundary condition is required. If it does not, we require a boundary condition. This question has been answered by Oleinik and Radkevic (1973) who showed that

for any equation of the form

$$\frac{\partial \phi}{\partial t} = a(x) \frac{\partial^2 \phi}{\partial x^2} + b(x) \frac{\partial \phi}{\partial x} + c(x) \phi,$$

no boundary condition is required at $x = 0$ if

$$\lim_{x \rightarrow 0} (b(x) - a'(x)) \geq 0.$$

For (9) this condition is satisfied provided $\alpha L > 0$ which is always the case.

Thus we see that no boundary condition is required at $P = 0$ and we will obtain a finite difference equation there by discretizing (11).

For large values of P it is clear that V will depend linearly on P , so we will use

$$\frac{\partial^2 V}{\partial P^2} \rightarrow 0 \quad \text{as} \quad P \rightarrow \infty. \quad (12)$$

For the last time interval we can write down an exact solution of the form

$$V_m^N(\tau) = A(\tau) + B(\tau)P,$$

since the initial condition is $V_m^N(0) = KP$ where K is a given constant.

The next section details numerical solution procedures for the above model.

4 Numerical Procedure

In general the mathematical model developed above cannot be solved analytically. To generate pricing recommendations we employ a numerical approach. We use a standard implicit procedure with $P_j = j\Delta P$ and $V_j^n = V(j\Delta P, n\Delta\tau)$ for $j = 0, \dots, J$ and $n = 0, \dots, nt$. Here $I\Delta P = P_{max}$ and

$n\Delta\tau = \Delta T$ where $P = P_{max}$ is the price at which we impose the boundary condition $V_{PP} = 0$, ΔT is the length of each period and I is an identity matrix. If we use central difference formulae the resulting difference equations can be written in the form

$$(I + \theta\Delta tA)V^{n+1} = (I - (1 - \theta)\Delta tA)V^n \quad (13)$$

for $0 < j < J$ where

$$A = \begin{pmatrix} r + b_0 & -b_0 & & & & & \\ -a_1 & r + a_1 + b_1 & -b_1 & & & & \\ & & & & & & \\ & & & & & & \\ & & & -a_{J-1} & r + a_{J-1} + b_{J-1} & -b_{J-1} & \\ & & & & a_J & & r + a_J \end{pmatrix}.$$

For $j = 1, \dots, J - 1$

$$a_j = \frac{\sigma^2 P_j^2}{2\Delta P^2} - \frac{\alpha(L - P_j)}{2\Delta P}, \quad (14)$$

$$b_j = \frac{\sigma^2 P_j^2}{2\Delta P^2} + \frac{\alpha(L - P_j)}{2\Delta P}, \quad (15)$$

$$b_0 = \frac{\alpha L}{\Delta P}, \quad (16)$$

$$a_j = \frac{\alpha(L - P_j)}{\Delta P} \quad (17)$$

It is possible for a_j to be negative for small values of j , i.e. near $P = 0$; this corresponds to the governing equation being convection dominated. In this case the system of difference equations are no longer diagonally dominant and we can expect their solution to oscillate. In order to circumvent this problem we will use upstream weighting for the convective term and get

$$a_j = \frac{\sigma^2 P_j^2}{2\Delta P^2}, \quad (18)$$

$$b_j = \frac{\sigma^2 P_j^2}{2\Delta P^2} + \frac{\alpha(L - P_j)}{\Delta P}. \quad (19)$$

This approximation is only first order, but since it will only be used away from the region of interest, this should not cause any problems.

We define θ in (13) to be a parameter between 0 and 1. Setting $\theta = 1/2$ gives the standard Crank-Nicolson procedure which is second order in both Δt and ΔP , while $\theta = 1$ produces a fully implicit procedure. While it is well known that in certain cases the Crank-Nicolson procedure has a tendency to produce solutions with unphysical oscillations, this seems not to be the case for this problem so we have mainly used $\theta = 1/2$.

At $P = 0$, i.e. $j = 0$ we will discretize equation (11) using an upstream weighting for the diffusive term. Hence we have

$$a_0 = 0,$$

$$b_0 = \frac{\alpha L}{\Delta P}.$$

For large values of P we truncate the region at $P = P_{max}$ and there we appeal to boundary condition (12) to set the second derivative to zero. Then a standard central difference approximation gives

$$V_{J+1} = 2V_J - V_{J-1},$$

yielding

$$a_J = -\frac{\alpha(L - P_J)}{\Delta P}.$$

The set of difference equations (13) is tridiagonal so a very fast form of Gaussian elimination can be applied. For details see Morris (1983).

5 Model Validation

As mentioned in §4 our model does not typically admit exact solutions. However, for special cases we can derive an exact solution. We can use these different cases to validate our numerical approach.

5.1 Analytic Solution

Let us first derive an expression for the mean as a function of time for our pricing model. In order to simplify the analysis we will only consider the case where the mean of the price equals a constant, m . Thus the pricing model (1), (2) and (3) becomes

$$dP = \alpha(m - P)dt + \sigma P dX, \quad (20)$$

with initial condition $P(0) = P_0$.

It is well known that the mean of this process follows the path

$$\bar{P}(t) = P_0 \exp(-\alpha t) + m(1 - \exp(-\alpha t)). \quad (21)$$

We now use this result to derive an exact solution for the situation in which we are in an unconstrained environment in which we can rent k cars per period for N periods, each spaced by time ΔT . The initial price of the cars is P_0 . There is no optionality here so the present value of the expected value of the cash flows arising from the business is:

$$\begin{aligned}
V &= k\bar{P}(0) + k\bar{P}(\Delta T) \exp(-r\Delta T) + \dots + k\bar{P}((N-1)\Delta T) \exp(-r(N-1)\Delta T) \\
&= k \sum_{j=0}^{N-1} \exp(-jr\Delta T) \left[P_0 \exp(-j\alpha\Delta T) + 1 - \exp(-j\alpha\Delta T) \right] \\
&= k(P_0 - m) \sum_{j=0}^{N-1} \exp[-j(r+\alpha)\Delta T] + km \sum_{j=0}^{N-1} \exp(-jr\Delta T) \\
&= k(P_0 - m) \frac{1 - \exp[-N(r+\alpha)\Delta T]}{1 - \exp[-(r+\alpha)\Delta T]} + km \frac{1 - \exp(-Nr\Delta T)}{1 - \exp(-r\Delta T)}. \tag{22}
\end{aligned}$$

If V is plotted against P_0 the solution is seen to be a straight line.

5.2 Validation

In order to validate our numerical approach we look at situations in which the car rental problem can be solved exactly in the form above. Two such cases follow.

- There is a surplus of cars and the price is large compared with the mean.
- Small volatility and small values of P

5.2.1 Case 1

Let us consider the case where there is a surplus of cars available so that the full number of cars, say K , can be reserved in every period. In addition we write the expression for the mean price in the form

$$L = a + b\tau,$$

where a and b are positive constants. Then the governing equation for each period is

$$V_\tau = \frac{1}{2}\sigma^2 P^2 \frac{\partial^2 V}{\partial P^2} + \alpha(a + b\tau - P) \frac{\partial V}{\partial P} - rV,$$

where $\tau = 0$ is the beginning of the period and $\tau = \Delta T$ is the end of the period.

In the last period we denote the value of the cash flow as $V_N(P, \tau)$ and it is clear that the initial condition is $V_N(P, 0) = KP$ so the solution can be written in the form

$$V_N(P, \tau) = A_N + B_N P.$$

We substitute this into equation (22) for V to see

$$A_N = -K\left(a + \frac{b}{\alpha} + b\tau\right)e^{-(\alpha+r)\tau} + K\left(a + \frac{b}{\alpha}\right)e^{-r\tau},$$

and

$$B_N = Ke^{-(\alpha+r)\tau}.$$

In the $N - 1$ period the cash flow is V_{N-1} with initial condition $A_N(\tau) + B_N(\tau)P + KP$ so, using the same procedure as above, we see that the solution can be written in the form

$$V_{N-1}(P, t) = A_{N-1} + B_{N-1}P.$$

Here

$$A_{N-1} = -(B_N + K)\left(a + \frac{b}{\alpha} + b\tau\right)e^{-(\alpha+r)\tau} + (B_N + K)\left(a + \frac{b}{\alpha}\right)e^{-r\tau}$$

and

$$B_{N-1} = (B_N + K)e^{-(\alpha+r)\tau}.$$

The subsequent solutions all have the same form.

This is, of course, the same solution we derived in §5.1 using the mean of the pricing process.

Now consider the case where $\sigma = 1$, $T = 0.0833$, $\alpha = 4$, the total number of cars that can be rented out over one period is 10 and the total

number of cars available is 20. Thus it is clear that if the total number of periods is greater than two and if the price at which cars can be rented out is considerably greater than one, all the cars will be rented out in the first two periods and the exact solution derived above will be applicable.

Table 1: Validation Case 1 - Excess Supply

P	V(P,0) N=3	V(P,0) N=6	V(P,0) N=12	V(P,0) Analytic
1	20.5621	22.1741	24.7186	20.0000
2	32.3604	32.6211	33.2656	32.3018
3	44.6130	44.6079	44.8372	44.6036
4	56.9067	56.9166	56.9557	56.9054

Here Table 1 indicates that as price increases from a low of 1 to a high of 4, the numerical solution approaches the analytical. Similarly as the number of periods in the numerical solution approaches that of the analytical solution (2) then the results converge. As expected, as the number of periods in the numerical solution increases, more opportunities for price increases are available and the numerical result will diverge from the analytical. These results are less pronounced as prices increase.

5.2.2 Case 2

The mean reverting pricing model that we are using is not easy to solve. However, if we assume that the volatility is small compared to the mean reversion term, we get, as in §5.1 with units selected such that $m = 1$,

$$P(t) = 1 - (1 - P_0)e^{-\alpha t}$$

where $P_0 = P(0)$, and $P(t)$ should now be interpreted as the mean. If we

apply this to the case where there is 3 periods, each of length 1/12 years, we see that

$$\begin{aligned}P_1 &= 1 - e^{-\alpha/12}, \\P_2 &= 1 - (1 - P_1)e^{-\alpha/12}, \\P_3 &= 1 - (1 - P_2)e^{-\alpha/12},\end{aligned}$$

where $P_0 = 0$. For $\alpha = 4$ we get that

$$P_1 = .283 \quad P_2 = .48 \quad P_3 = .632.$$

Thus for the case where, as above, we can rent out 10 cars per period but only a total of 20 cars, an estimate of the cash flow when $r = 0$ is $10P_2 + 10P_3$ which equals 11.18. The numerical procedure generates the same result. We can proceed in this manner and for $N = 6$ we find that an approximate value for the cash flow at $t = 0$ is 15.47 while the numerical result is 16.89. As N becomes larger, it is clear that the expected value of P tends to 1 so the value of the cash flow should tend to 20. However, the numerical result for $N = 12$ is 21.74.

In general these results can be interpreted as at least partial validation of the numerical procedure.

6 Numerical Example

We require representative values of the different parameters that appear in the model. Two of these, which originate in the pricing model, are not easy to estimate with any degree of accuracy. We will show how to get reasonable values of the parameters and then show that our computational model is not overly sensitive to reasonable changes in them.

Let us first consider the volatility σ . If we consider the pricing with P being close to the mean L , we get approximately that

$$dP = \sigma dX,$$

where X is a Wiener process; one can think of dX as being a random variable, drawn from a normal distribution with mean zero and variance dt . Since dX scales as \sqrt{dt} we see that an estimate for σ is given by

$$\sigma = \frac{dP}{\sqrt{dt}}.$$

If we suppose that the change in the price of rental cars over a 1 week period is 10% and we estimate $\sqrt{52} = 7$ this implies that σ should be of the order 70% per year.

In order to get an estimate for α , the rate at which the car rental price reverts to its mean, let us consider the pricing model with no stochastic noise. Then

$$dP = -\alpha(P - L)dt$$

where we will assume that the mean price L is constant. This equation can be integrated to get

$$P = L + (P_0 - L)e^{-\alpha t},$$

where $P_0 = P(0)$. Approximate $e^{-\alpha t}$ by $1 - \alpha t$ so

$$P = L + (P_0 - L)(1 - \alpha t).$$

Thus we see that the time t^* that it takes the price to return to the mean is given by $1 - \alpha t^* = 0$. The data indicates t^* is usually of the order of two days so α is approximately 180/year.

The remaining parameters are easily found and we will use the set of parameter values given in Table 2.

Table 2: Parameter Values - Numerical Example

Parameter	Estimate
Number of periods N	12
Length of each period	1 week
Total number of cars	50
Discount rate r	5% per year
Average minimum rental price	25\$
Average maximum rental price	30\$
Demand at zero price	20 cars
Slope of demand curve	$-\frac{1}{15}$
Volatility σ	1
Return rate α	180

Using these parameters values we generate the plots shown in Figure 4 which shows the number of cars that should be rented out for different prices at time $t = 0$, i.e. at the beginning of the first of 12 rental periods of a week each, in order for the franchise to maximize the total cash flow. The price model underlying the figure is relatively flat with an average price at time zero of \$25 rising to a maximum (average) of \$30 at the end of the reservation period. Price volatility is moderate, representing about a 12% change on a weekly basis ($\sigma = 1$) with quick price reversion, $\alpha = 180$. Base demand is 20 units with elasticity $\frac{-1}{15}$. The three series plotted in Figure 4 are for three different levels of risk-adjustment. The series with $\lambda = 0$ is equivalent to a risk neutral or expected value approach, whereas $\lambda = 5$ and $\lambda = 10$ represent increasing value in risk. The increased value placed on risk means the options are worth more to the firm resulting in them holding on to the options longer, requiring larger rates to rent the cars.

It is important to note that Figure 4 is a merging of supply and demand. At lower prices the car rental firm is limiting supply, not making cars available

till prices exceed certain limits. At higher prices, the firm is willing to rent but sales are capped by a lack of demand.

The interesting part is that even if the mean price is \$25 per car, the risk neutral franchise should not rent cars out for less than about \$23 a car. This confirms earlier results where Anderson and Blair (2004) indicated that early rentals at deeply discounted rates are costly, from a revenue standpoint, to the car rental firm, indicating that perhaps car rental firms are discounting too deeply early in the booking cycle.

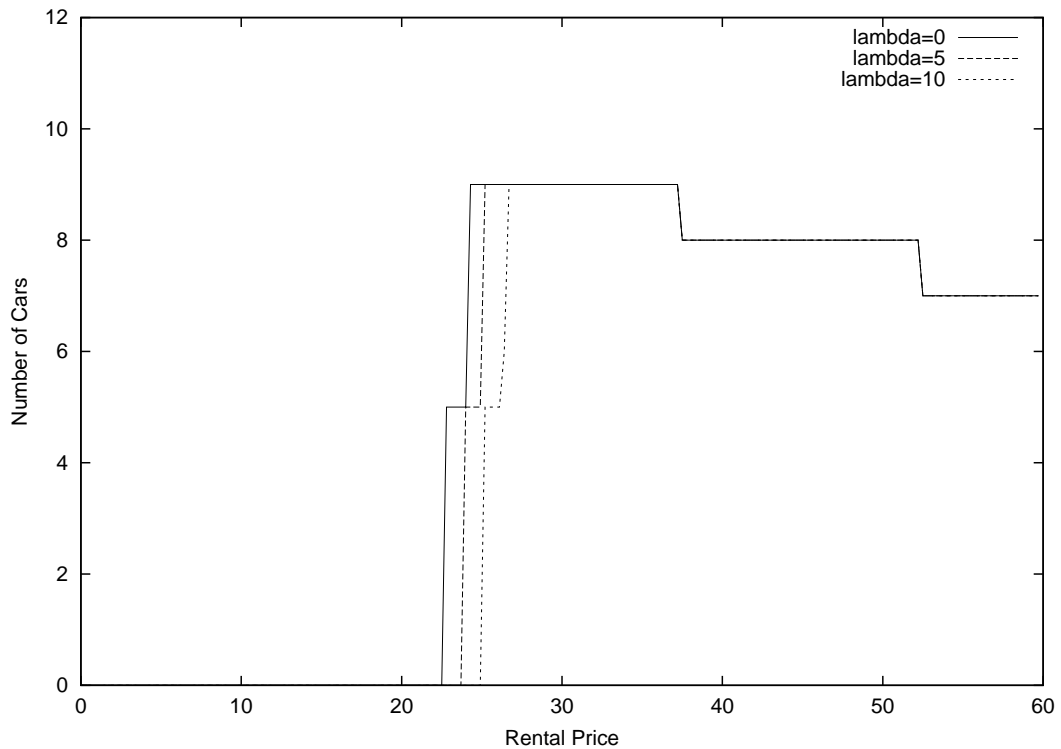


Figure 4: Rates and Availability at Initial booking

Let us now consider the sensitivity of our results to changes in σ and α . If we change σ from 0.1 to 2.0 we see that the minimum rental price changes from \$22.60 to \$22.80. Similarly if we change α but keep the other

parameters at the values given in Table 2, we get the results in Table 3. Table 3 shows that the slower prices tend to revert, the more likely a firm is to rent early at deeply discounted rates.

Table 3: Sensitivity Analysis - rate of reversion to mean

α	First rental price
2	26.0
5	25.5
10	24.0
100	22.8
180	22.8

The procedure is implemented in C^{++} in about 600 lines of code. Execution time for a problem with 12 periods is about five seconds on a standard PC (Pentium III, 550 Mhz). Since the routine must be run once per period the total execution time will be around 35 seconds.

7 Discussion

We have derived a new model for revenue management and applied it to car rentals. This model is based on the concepts of real option theory and is related to the swing options used in the power industries. We have derived some exact results and used these in the validation of a computational model of the process.

The method provides an approach to including competitive effects in revenue management settings. For commodity based service businesses, like car rentals (where customer switching costs are low), a firm's pricing decisions may be impacted by their price relative to competition. Our approach to

modeling price as a stochastic differential equation is a novel approach to including these competitive effects in revenue management applications.

We suppose that the management of the business has a database which allows calibration of stochastic models of rental price development. At present our approach does not include impacts of inventory sharing across multiple rental periods, i.e. a car may be rented overnight or for three days. Similarly our model does not include effects created by multiple car classes, i.e. the ability to rent a higher valued car to a customer desiring a lower valued car. These limitations may be relaxed by jointly modeling the price process for different lengths of rent for different classes of cars. These price processes would need to be correlated as prices would tend to move together across classes and rental lengths.

While we have illustrated the application of Real Options to revenue management using car rentals as an example, the general approach is extendible to any industry with active price changes. Intense competition only helps to motivate the application of our methods.

Acknowledgements: The authors wish to thank Montgomery Blair of Dollar Thrifty Automotive Group, for provision of data and insight into car rental revenue management. Financial support for this research was received from Natural Sciences and Engineering Research Council of Canada (NSERC).

References

- Amram, M., & Kulatilaka, N. (1999). *Real options : managing strategic investment in an uncertain world*. Boston, MA: Harvard Business School Press.
- Anderson, C., & Blair, M. (2004). Performance monitor: the opportunity costs of revenue management. *Journal of Revenue and Pricing Management*, 2(4).
- Belobaba, P. (1987). *Air travel demand and airline seat inventory management*. Unpublished doctoral dissertation, Flight Transportation Research Lab, MIT, Cambridge, MA.
- Belobaba, P., & Weatherford, L. (1996). Comparing decision rules that incorporate customer diversion in perishable asset revenue management situations. *Decision Science*, 27, 3-43.
- Blair, M. (2002). *Dynamic pricing; the new diversity of revenue management*. IFORS Triennial Meeting, Edinburgh Scotland.
- Blair, M., & Anderson, C. (2002). Performance monitor. *Journal of Revenue and Pricing Management*, 1(1), 57-66.
- Carroll, W., & Grimes, R. (1995). Evolutionary changes in product management: experiences in the car rental industry. *Interfaces*, 25(5), 84-104.
- Cook, T. (1998). Sabre soars. *OR/MS Today*, June, 26-31.
- d'Halluin, K. V., P.A. Forsyth, & Labahn, G. (2001). *Numerical pde approach for pricing callable bonds*. (Working paper, Department of Computer Science, University of Waterloo, Waterloo, Ontario, Canada.)

- Dixit, A. K., & Pindyck, R. S. (1994). *Investment under uncertainty*. Princeton, New Jersey: Princeton University Press.
- Feng, Y., & Gallego, G. (1995). Optimal starting times for end-of-season sales and optimal stopping times for promotional fares. *Management Science*, *41*, 1371-1391.
- Feng, Y., & Xiao, B. (2000). Optimal policies of yield management with multiple predetermined prices. *Operations Research*, *48*, 332-343.
- Gallego, G., & VanRyzin, G. (1994). Optimal dynamic pricing of inventories and stochastic demand over finite horizons. *Management Science*, *40*, 999-1020.
- Gallego, G., & VanRyzin, G. (1997). A multi-product dynamic pricing problem and its applications to network yield management. *Operations Research*, *45*, 24-41.
- Geraghty, M., & Johnson, E. (1997). Revenue management saves National Car Rental. *Interfaces*, *27*(1), 107-127.
- Glover, F., Glover, R., Lorenzo, J., & McMillan, C. (1982). The passenger mix problem in the scheduled airlines. *Interfaces*, *12*, 73-79.
- Harris, F., & Peacock, P. (1995). Hold my place, please. *Marketing Management*, *4*, 34-44.
- Hull, J. C. (2003). *Options, futures and other derivatives* (5 ed.). Upper Saddle River, New Jersey: Prentice Hall.
- Jaillet, P., Ronn, E., & Tompaidis, S. (2001). *Valuation of commodity-based swing options*. (Working Paper, McCombs School of Business, University of Texas at Austin)

- Keppo, J. (2002). *Pricing of electricity swing options*. (Working Paper, Department of Industrial and Operations Engineering, University of Michigan)
- Kimes, S. (1989). Yield management: a tool for capacity constrained service firms. *Journal of Operations Management*, 8, 348-363.
- Littlewood, K. (1972, 12). *Forecasting and control of passenger bookings*. in AGIFORS Symposium Proceedings. (Nathanya, Israel)
- McGill, J., & VanRyzin, G. (1999). Revenue management: research overview and prospects. *Transportation Science*, 33(2), 233-256.
- Merton, R. C. (1990). *Continuous-time finance*. Cambridge, MA: Blackwell.
- Morris, J. (1983). *Computational methods in elementary numerical analysis*. New York, NY: Wiley.
- Oleinik, A., & Radkevich, E. (1973). *Second order equations with nonnegative characteristic form*. Providence, R.I: American Mathematical Society.
- Pfeifer, P. (1989). The airline discount fare allocation problem. *Decision Science*, 20, 149-157.
- Simpson, R. (1985). Setting optimal booking levels for flight segments with multi-class, multi-market traffic. *AGIFORS Symposium Proceedings*, 25. (Hikone, Japan)
- Smith, B., Leimkuhler, J., & Darrow, R. (1992). Yield management at American Airlines. *Interfaces*, 22, 8-31.
- Smith, B., & Penn, C. (1988). Analysis of alternative origin-destination control strategies. *AGIFORS Symposium Proceedings*, 28. (New Seabury, MA)

- Weatherford, L., & Bodily, S. (1992). A taxonomy and research overview of perishable-asset revenue management: yield management, overbooking and pricing. *Operations Research*, *40*, 831-844.
- Williamson, E. (1992). *Airline network seat inventory control: methodologies and revenue impact*. Unpublished doctoral dissertation, Flight Transportation Laboratory, MIT, Cambridge, MA.
- Wilmott, P. (2000). *Paul Wilmott on quantitative finance*. Chichester UK: Wiley and Sons.