

Review: current international research into cellulose nanofibres and nanocomposites

S. J. Eichhorn · A. Dufresne · M. Aranguren · N. E. Marcovich ·
J. R. Capadona · S. J. Rowan · C. Weder · W. Thielemans · M. Roman ·
S. Renneckar · W. Gindl · S. Veigel · J. Keckes · H. Yano · K. Abe ·
M. Nogi · A. N. Nakagaito · A. Mangalam · J. Simonsen · A. S. Benight ·
A. Bismarck · L. A. Berglund · T. Peijs

Abstract This paper provides an overview of recent progress made in the area of cellulose nanofibre-based nanocomposites. An introduction into the methods used to isolate cellulose nanofibres (nanowhiskers, nanofibrils) is given, with details of their structure. Following this, the article is split into sections dealing with processing and characterisation of cellulose nanocomposites and new developments in the area, with particular emphasis on applications. The types of cellulose nanofibres covered are those extracted from plants by acid hydrolysis

(nanowhiskers), mechanical treatment and those that occur naturally (tunicate nanowhiskers) or under culturing conditions (bacterial cellulose nanofibrils). Research highlighted in the article are the use of cellulose nanowhiskers for shape memory nanocomposites, analysis of the interfacial properties of cellulose nanowhisker and nanofibril-based composites using Raman spectroscopy, switchable interfaces that mimic sea cucumbers, polymerisation from the surface of cellulose nanowhiskers by atom transfer radical polymerisation and ring opening polymerisation,

S. J. Eichhorn (✉)
Materials Science Centre, School of Materials and the Northwest Composites Centre, Grosvenor Street, Manchester M1 7HS, UK
e-mail: stephen.j.eichhorn@manchester.ac.uk

A. Dufresne
Grenoble Institute of Technology, The International School of Paper, Print Media & Biomaterials (Grenoble INP Pagora), BP65, 38402 Saint Martin D'Hères Cedex, France

M. Aranguren · N. E. Marcovich
National Institute of Research in Science and Technology of Materials (INTEMA), Universidad Nacional de Mar del Plata, Av. Juan B. Justo 4302, B7608FDQ Mar del Plata, Argentina

J. R. Capadona
Rehabilitation Research and Development, Louis Stokes Cleveland DVA Medical Center, 10701 East Blvd., Cleveland, OH 44106, USA

S. J. Rowan
Department of Macromolecular Science and Engineering, Case Western Reserve University (CWRU), 2100 Adelbert Road, Cleveland, OH 44106, USA

C. Weder
Adolphe Merkle Institute, University of Fribourg, 1700 Fribourg, Switzerland

W. Thielemans
School of Chemistry and Process and Environmental Research Division, Faculty of Engineering, The University of Nottingham, Nottingham NG7 2RD, UK

M. Roman · S. Renneckar
Department of Wood Science and Forest Products, Virginia Tech, 230 Cheatham Hall, 0323, Blacksburg, VA 24061, USA

W. Gindl
Department of Materials Science and Process Engineering, University of Natural Resources and Applied Life Sciences, BOKU-Vienna, Austria

S. Veigel
Wood K plus, Competence Centre for Wood Composites and Wood Chemistry, Linz, Austria

J. Keckes
Department of Materials Physics, Erich Schmid Institute of Materials Science, Austrian Academy of Sciences, University of Leoben, Leoben, Austria

H. Yano · K. Abe · M. Nogi · A. N. Nakagaito
Research Institute for Sustainable Humanosphere, Kyoto University, Uji, Kyoto 611-0011, Japan

and methods to analyse the dispersion of nanowhiskers. The applications and new advances covered in this review are the use of cellulose nanofibres to reinforce adhesives, to make optically transparent paper for electronic displays, to create DNA-hybrid materials, to generate hierarchical composites and for use in foams, aerogels and starch nanocomposites and the use of all-cellulose nanocomposites for enhanced coupling between matrix and fibre. A comprehensive coverage of the literature is given and some suggestions on where the field is likely to advance in the future are discussed.

Introduction to cellulose structure/property relationships

Cellulose is probably one of the most ubiquitous and abundant polymers on the planet, given its widespread industrial use in the present age, but also in the past for ropes, sails, paper, timber for housing and many other applications. By far the most commercially exploited natural resource containing cellulose is wood. The word ‘material’ in fact derives from the Latin for ‘trunk of tree’. Indeed, Chaucer writes in the ‘Parson’s Tale’ in 1390

*“For he that is in helle hath defaute of light material.
for certes, the derke light that shal
Come out of the fyr that evere shal brenne”*

showing quite clearly that the relationship between wood and material was persisting into the Middle Ages.

A. Mangalam
Department of Wood Science and Forest Products,
Virginia Tech, 248 Cheatham Hall, Blacksburg, VA 24061, USA

J. Simonsen
Department of Wood Science & Engineering, Oregon State
University, Corvallis, OR 97331, USA

A. S. Benight
Departments of Chemistry & Physics, Portland State University,
Portland, OR, USA

A. Bismarck
Department of Chemical Engineering, Polymer and Composite
Engineering Group (PACE), Imperial College London, London,
UK

L. A. Berglund
Department of Fibre & Polymer Technology, Wallenberg Wood
Science Centre, KTH, 10044 Stockholm, Sweden

T. Peijs
Centre for Materials Research, Queen Mary, University
of London, Mile End Road, London E1 4NS, UK

Other plants also contain a large amount of cellulose, including hemp, flax, jute, ramie and cotton. In addition to these, there are non-plant sources of cellulose; for instance, forms produced by bacteria and cellulose produced by tunicates. Bacterial cellulose (BC) is produced by the gram-negative bacteria *Acetobacter xylinum* (or *Gluconacetobacter xylinum*), which manifests itself under special culturing conditions as a fine fibrous network of fibres [1]. Tunicate cellulose is produced by sea creatures (e.g. *Microcosmus fulcatus*) in the form of rod-like near perfect crystals of the material [2].

Since cellulose is classed as a carbohydrate (a substance containing carbon, hydrogen and oxygen), it is necessary to point out that although this term applies to a large number of organic compounds, cellulose is unique in that it can be either synthesised from, or hydrolysed to, monosaccharides [3]. The repeat unit of the cellulose polymer is known to comprise two anhydroglucose rings joined via a β -1,4 glycosidic linkage from this unit [4] (called cellobiose) as shown in Fig. 1. In its native form cellulose is typically called cellulose-I. This cellulose-I crystal form, or native cellulose, also comprises two allomorphs, namely cellulose I α and I β [5]. The ratio of these allomorphs is found to vary from plant species to species, but bacterial and tunicate forms are I α and I β rich, respectively [6, 7]. The crystal structures of cellulose allomorphs I α and I β have been determined with great accuracy, particularly the complex hydrogen bonding system [6, 7]. The hydrogen bond network makes cellulose a relatively stable polymer, which does not readily dissolve in typical aqueous solvents and has no melting point. This network also gives the cellulose chains a high axial stiffness [8]. Since high stiffness is a desirable property for a reinforcement fibre in a composite, the determination of the crystal modulus of cellulose will be reviewed later.

Cellulose chains aggregate into the repeated crystalline structure to form microfibrils in the plant cell wall, which also aggregate into larger macroscopic fibres. It is this hierarchical structure that is essentially deconstructed in order to generate cellulose nanofibres from plants. BC and whiskers produced by tunicates already exist in

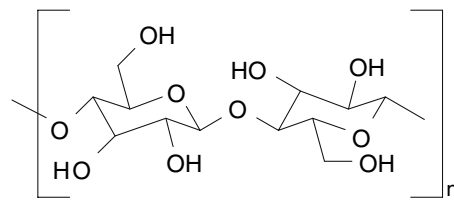


Fig. 1 The repeat unit of cellulose

this form, making them desirable materials for niche applications.

The study of cellulosic nanofibres as a reinforcing phase in nanocomposites started 15 years ago [2]. Since then a huge amount of literature has been devoted to cellulose nanofibres, and it is becoming an increasingly topical subject. Different descriptors of these nanofibres are often referred to in the literature. These include “nanowhiskers” (or just simply “whiskers”), “nanocrystals” or even “monocrystals”. These crystallites have also often been referred to in literature as “microfibrils”, “microcrystals” or “microcrystallites”, despite their nanoscale dimensions. The term “whiskers” is used to designate elongated crystalline rod-like nanoparticles, whereas the designation “nanofibrils” should be used to designate long flexible nanoparticles consisting of alternating crystalline and amorphous strings.¹

In essence, the principle reason to utilise cellulose nanofibres in composite materials is because one can potentially exploit the high stiffness of the cellulose crystal for reinforcement. This can be done by breaking down the hierarchical structure of the plant into individualised nanofibres of high crystallinity, therefore reducing the amount of amorphous material present. Since plant fibres are hierarchically fibrous it is possible to do this, yielding a fibrous form of the material (nanowhiskers, nanofibrils), which due to their aspect ratio (length/diameter) and therefore reinforcing capabilities are potentially suitable for composite materials. A high aspect ratio to the fibres is desirable as this enables a critical length for stress transfer from the matrix to the reinforcing phase. This will be discussed in more detail once the mechanical properties of cellulose nanofibres have been presented.

It is however not clear what the true crystal modulus of cellulose is, nor whether this stiffness is really obtainable from plants, bacteria or tunicates. Establishing a true value of the crystal modulus of cellulose sets an upper limit to what is achievable in terms of reinforcing potential.

The crystal modulus of cellulose was first determined in 1936 by Meyer and Lotmar [9] using a theoretical model and bond stiffness constants derived from spectroscopic measurements. They obtained a value of ~ 120 GPa, which is close to values that were later

experimentally confirmed for this property [10, 11]. Despite this prediction, Meyer and Lotmar used an incorrect structure for cellulose, and so when this was corrected by Lyons, and a value of 180 GPa was obtained [12]. Lyons however used an incorrect term in his mathematical expression for bond angle bending. This was rectified by Treloar [13], who reported a modulus of 56 GPa. This value is now considered to be too low, probably due to the lack of intramolecular hydrogen bonding in Treloar’s cellulose structure [13]. Sakurada et al. [10] reported a value of 138 GPa for the crystal modulus of cellulose, which was determined using X-ray diffraction of deformed fibre bundles. This paved the way for many more measurements and determinations of the crystal modulus of cellulose using X-ray diffraction [11, 14] and theoretical approaches [15–18], all of which have obtained values in the range 100–160 GPa. A more recent determination of the cellulose crystal modulus using inelastic X-ray scattering (IXS) reported a value of 220 GPa [19]. Such a high crystal modulus for cellulose has not been reported before, but this may be due to the fact that the assumption of uniform stress in the crystals of cellulose, a basic assumption for most crystal modulus determinations, is not correct [19, 20]. This high value for the crystal modulus does however call into question theoretical approaches, and since they are consistent with experiment it may be that a more modest value is appropriate. Nevertheless, this value of the modulus of crystalline cellulose is quite large compared to other materials, especially if its comparatively lower density is taken into account. The moduli of a number of commonly used engineering materials are reported in Table 1. Also reported are the specific moduli (modulus/density), which show that the specific modulus of crystalline cellulose exceeds engineering materials such as steel, concrete, glass and aluminium. It is worth pointing out that cellulose has obvious disadvantages compared to traditional engineering materials; for instance, moisture absorption and swelling, and enzymatic degradability to name but two. It is worth pointing out that the microfibrils comprising plants do not swell themselves, as it is not energetically favourable for water to penetrate the bulk material.

Table 1 Moduli of engineering materials compared to cellulose

Material	Modulus (GPa)	Density (Mg m^{-3})	Specific modulus ($\text{GPa Mg}^{-1} \text{m}^3$)	Reference
Aluminium	69	2.7	26	[279]
Steel	200	7.8	26	[279]
Glass	69	2.5	28	[279]
Crystalline cellulose	138	1.5	92	[10]

¹ For the sake of clarity and consistency the term “nanowhiskers” will be used to describe material hydrolysed from plants, and “nanofibrils” for material extracted by mechanical means or from native sources such as bacterial cellulose. The term “nanofibres” will be used as a general descriptor of both these sub-forms of reinforcement.

Table 2 Mechanical properties of some common plant fibres, namely, Young's modulus, specific Young's modulus, breaking strength and breaking strain

Fibre type	Young's modulus (GPa)	Specific Young's modulus (GPa Mg ⁻¹ m ³)	Breaking strength (GPa)	Breaking strain (%)
Flax	27.0	18.0	0.81	3.0
Jute	25.8	17.2	0.47	1.8
Hemp	32.6	21.7	0.71	2.2
Ramie	21.9	14.6	0.89	3.7

Data taken from Morton and Hearle [280] with the conversion from N tex⁻¹ to GPa being made using a density of cellulose of 1.5 Mg m⁻³ from Table 1

The crystalline modulus of cellulose is hard to achieve in reality for a micron-sized fibre. Plant fibres often have moduli well below the crystalline value. Typical values of the modulus of a range of cellulose fibres are given in Table 2. When the density of the fibres is taken into account and specific modulus is determined (assuming a density of cellulose of 1.5 Mg m⁻³), then the values *approach* those of glass and other engineering solids. Many authors have published values for the modulus of plant fibres, some closer to the crystal modulus of cellulose quoted in Table 1. It is however difficult to obtain an accurate modulus for plant fibres, given their often irregular and variable cross-sections and the presence of voids in the form of lumens. It is beyond the scope of this article to fully review this aspect of natural fibre mechanics, but it is acknowledged that higher values than those quoted in Table 2 have been reported. Plant fibres are known to have variable mechanical properties, and another reason for extracting nanofibers and nanofibrils from the cell wall of plants is that they are thought to have more consistent properties.

One way therefore to obtain fibres that have a modulus that approaches that of pure crystalline cellulose is to break down the structure of the plant into the elementary nanofibrils, or crystals (nanowhiskers), that make up the fibre. Another approach is to source material that already has these structural forms. Two examples of this latter approach are to use microbial or BC, or to take whiskers of cellulose from an animal source (such as tunicates, a sea creature). BC fibrils are produced by a family of bacteria referred to as *G. xylinum*, under special culturing conditions [21]. The fibrils are generally in the form of a fine non-woven mesh or network, and have been reported to have moduli in the range 78–114 GPa [22, 23]. Some of the first reports of the use of BC for composite materials appeared in the mid-1990s [24, 25], but there has recently been a resurgence of this research area. Notable examples of this come from Japan at Kyoto University [26] and from

the UK at Imperial College [27–30], both of whom have contributed to this article.

Microfibrillated cellulose (MFC), where fine nano-sized fibrils are extracted from plants by mechanical processing and/or homogenisation, was first reported in the early 1980s [31]. Since then, and in more recent times, a large number of papers have been published on this topic, the full scope of which is beyond this review although an overview of the physical properties of nanofibrils from this source will be given in the section “[An overview of cellulose whisker and nanofibre properties \(Grenoble Institute of Technology \(INPG\), International School of Paper, Grenoble, France\)](#)”. Notable recent examples of research into these materials have been by groups in Japan at Kyoto University [32], in Sweden at KTH [33], in the USA at Virginia Tech [34], and in Austria at BOKU, all of whom have made contributions to this article.

The existence of highly crystalline cellulose nanowhiskers has been known for some time. They can be extracted from plant material via a controlled acid hydrolysis, which more readily hydrolyses the amorphous regions of the cellulose, leaving high aspect ratio (length to diameter ratio) crystals of pure cellulose. The first report of cellulose crystals, produced in solution, was by Ranby and Noe in 1961 [35]. This was followed by the first report of the production of cellulose nanowhiskers by acid hydrolysis [36]. Nanowhiskers of cellulose can also be extracted from the mantle of tunicates, a sea creature [37]. Tunicate nanowhiskers are reported to have moduli of ~140 GPa [17], but acid hydrolysed nanowhiskers are thought to have much lower moduli (50–100 GPa) [38]. The first report of the use of cellulose nanowhiskers in composite materials was by Favier et al. in 1995 [2]. They investigated the percolation of nanowhiskers extracted from tunicates. Since then a large number of groups have reported on the use of cellulose nanowhiskers and their use in composites, some of whom have contributed to this article; namely from Argentina at INTEMA, within the UK at the University of Manchester and the University of Nottingham, and from the USA at Case Western Reserve University, Virginia Tech and at Oregon State University.

The relative mechanical advantage of using cellulose nanofibres (nanowhiskers, nanofibrils) over conventional fibres is best shown graphically. Figure 2 shows Halpin-Tsai micromechanical predictions for unidirectional polypropylene matrix composites filled with 50 vol% of unidirectional cellulose fibres as a function of different fibre aspect ratios and Young's moduli. The Halpin-Tsai model [39, 40] is a short-fibre composite model which predicts all the elastic constants of composite materials as a function of the aspect ratio of the filler when the constituent properties and the volume fractions of the two phases (matrix and reinforcement) are known.

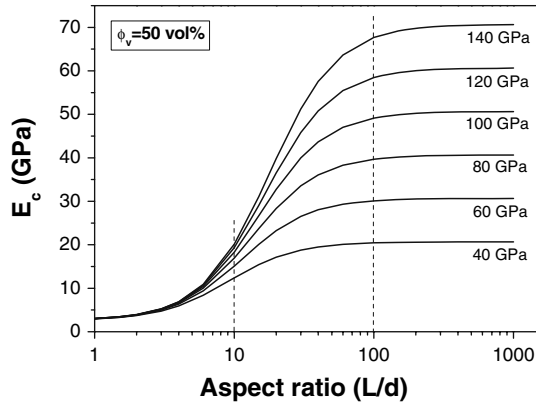


Fig. 2 Model plots of the Halpin-Tsai equation (Eq. 1) for a range of fibre moduli showing the predicted composite modulus (E_c) as a function of the aspect ratio of the fibre reinforcement. The model assumes a unidirectional composite sample, with no fibre–fibre interactions and a polypropylene matrix

The Halpin-Tsai equation can be written as

$$\frac{E_c}{E_m} = \frac{1 + \zeta \eta \phi_f}{1 - \eta \phi_f} \quad (1)$$

with

$$\eta = \frac{\left(\frac{E_f}{E_m} - 1\right)}{\left(\frac{E_f}{E_m} + \zeta\right)} \quad (2)$$

where E_c , E_f and E_m are respectively the composite, reinforcement and matrix Young's moduli; ϕ_f is the filler volume fraction and ζ a shape factor. The shape factors relative to fibres reinforcement has been chosen to be $(0.5s)^{1.8}$, in accordance with a previous study [41], where s is the aspect ratio. For a more extensive introduction to the model, the reader is referred to the relevant scientific literature [39, 40]. The model supposes a perfect interface between matrix and fibre, but does not account for fibre–fibre interactions, which can take place in high loading cellulose composite/nanocomposites (i.e. percolated networks). Young's modulus of cellulose fibres can vary according to the source, and fibre dimensions. A modulus of 40–60 GPa is usually found for natural bast fibres like flax and hemp (see Table 2), while it potentially increases up to 80 GPa for single cells [42] and certainly in the range of 100–140 GPa for nanofibrils and nanowhiskers [17, 23]. Due to the intrinsic higher performances of nano-sized fillers, cellulose nanowhiskers are predicted to enhance stress transfer and therefore the final composite modulus (more than 3-fold) when compared with traditional micron-sized cellulose fibres. It is clear from these data why the recent interest in studying nano-cellulose composite has occurred. Nevertheless, such effects can only be realised for fibres of a high-enough aspect ratio. Cellulose nanofibres with an aspect ratio smaller than 10 would not have

any major benefits when compared with conventional micron-sized filaments. Only nanofibres with aspect ratios bigger than 50 can guarantee an efficient reinforcement effect. For aspect ratios larger than 100, Young's moduli reach a plateau, which correspond to the upper-limit case for reinforcement. For example, single flax fibres, which are around 25 mm long and 20 μm thick, will have an aspect ratio of 1250, which is well above the critical value. Since cellulose nanowhiskers generally have lower aspect ratios, typically between 10 and 30, there is a need for longer nanofibres of this type.

This article contains contributions to the field of cellulose nanocomposites in the areas of processing and characterisation and applications and new advances in the subject. It is intended that a flavour of current research taking place internationally will be given, rather than a general overview of the area of research. For other reviews of cellulose nanocomposites, the reader is referred to an article by Samir et al. [43] and another by Kamel [44]. Before each research contribution is reported, a detailed overview of nanowhisker and nanofibril properties will be given by Alain Dufresne at INP, Grenoble, France, who is a pioneer in this research area.

An overview of cellulose whisker and nanofibre properties (Grenoble Institute of Technology (INPG), International School of Paper, Grenoble, France)

As already mentioned, native cellulose present in macroscopic fibres, like for instance plant fibres, consists of a hierarchical structure. This hierarchical structure is built up by smaller and mechanically stronger entities consisting of native cellulose fibrils. These fibrils interact strongly and aggregate to form the natural or native cellulose fibres. The lateral dimension of these fibrils depends on the source of the cellulose but it is typically of the order of a few nanometres. The fibrils contain crystalline cellulosic domains but also noncrystalline domains located at the surface and along their main axis. The noncrystalline domains form weak spots along the fibril. These fibrils display high stiffness and are therefore suitable for the reinforcement of nanocomposite materials.

There are numerous methods to prepare nanofibres from natural cellulose fibres. The properties of these nanofibres will now be outlined in more detail. One method consists of submitting plant fibres to strong acid conditions combined with sonication. It leads to the hydrolysis of noncrystalline domains, and rod-like nanofibres called cellulose nanowhiskers result from this treatment. The dimensions of these resultant nanowhiskers depend on the source of the cellulose, but their length generally ranges between 100 and 300 nm. Some typical transmission electron microscope

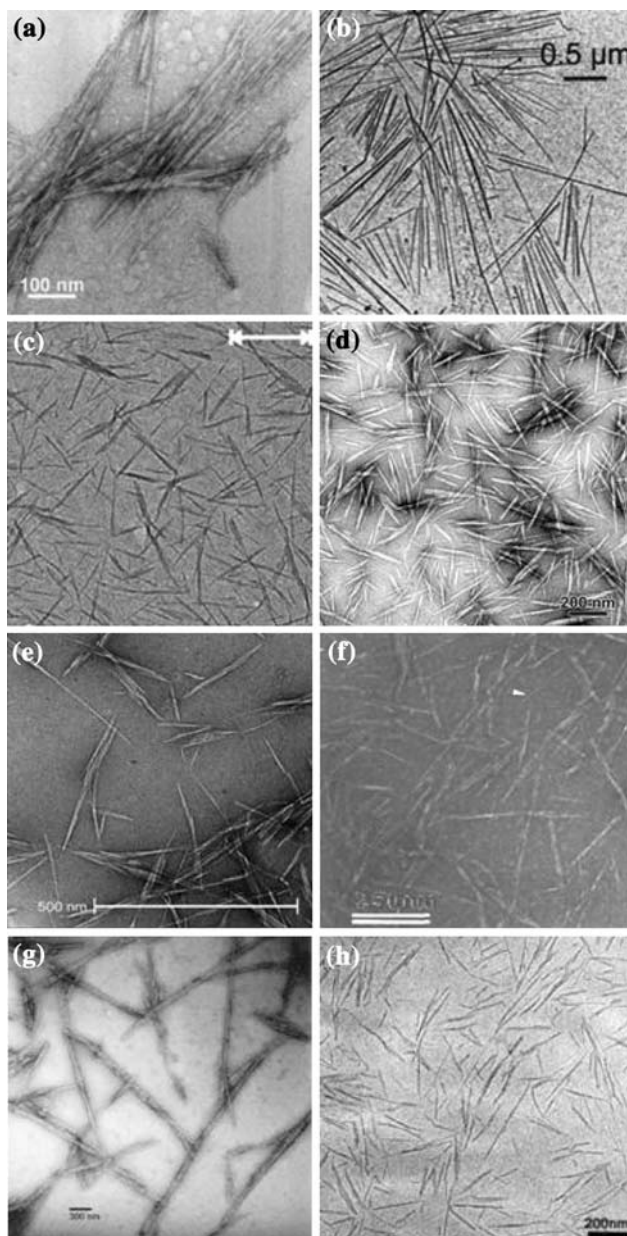


Fig. 3 Transmission electron microscope images of cellulose whiskers, obtained from acid hydrolysis of **a** microcrystalline cellulose [45], **b** tunicate [46], **c** cotton [47], **d** ramie [48], **e** sisal [49], **f** straw [50], **g** bacterial cellulose [51] and **h** sugar beet [52]. Reproduction of images **a**, **b**, **c**, **e** and **h** from [45], [46], [47], [49] and [52] with permission from American Chemical Society (© American Chemical Society 2000, 2004, 2005, 2009); reproduction of image **d** from [48] with permission from Springer (© Springer 2008); reproduction of image **f** from [50] with permission from Wiley (© Wiley 1996); reproduction of image **g** from [51] with permission from Springer (© Springer 2002)

images of these nanowhiskers are reported in Fig. 3, taken from a number of publications [45–52].

By omitting the hydrolysis step and only submitting the fibres to high mechanical shearing forces, disintegration of the fibres occurs, leading to a material called

microfibrillated cellulose (MFC). A combination of high mechanical shearing forces and mild enzymatic hydrolysis can also be used to prepare MFC [53]. These nanofibrils ideally consist of individual nanoparticles with a lateral dimension around 5 nm. Generally, MFC consists of nanofibril aggregates, whose lateral dimensions range between 10 and 30 nm, or more.

Among the many plant fibres used for the preparation of nanowhiskers, cotton constitutes the main source. The main reason is the high cellulose content of cotton that results in a higher yield when preparing cellulose nanowhiskers and avoids intensive purification of cellulose.

The main problem associated with making effective nanocomposites from cellulose nanofibres is related to their homogeneous dispersion within a polymeric matrix. Because of the high stability of aqueous suspensions of cellulose nanowhiskers, water is the preferred processing medium. Hydrosoluble polymers are therefore well adapted for the processing of cellulose nanowhisler reinforced nanocomposites [46, 54–64]. Solid nanocomposite films can be obtained by mixing, casting and evaporating the aqueous polymer solution and the aqueous suspension. A first alternative consists in using an aqueous dispersed polymer, e.g. latex [50, 65–75]. After mixing and casting the two aqueous suspensions, a solid nanocomposite film can be obtained by water evaporation and particle coalescence. A second alternative consists of using non-aqueous systems. This means that the nanofibres can be dispersed in a suitable organic medium with respect to the polymeric matrix. For instance, it is possible to coat the surface of nanofibres with a surfactant [45, 76]. The chemical modification of a nanofibres' surface is another way to obtain dispersions in organic solvents. It generally involves reactive hydroxyl groups from the surface of polysaccharides [77–79]. Grafting of polymeric chains to the surface of polysaccharide nanofibres, using the grafting onto [80, 81] or grafting from [48, 82–84] techniques, have been reported. Recently, it was also shown that cellulose nanowhiskers can be dispersed in dimethylformamide, dimethyl sulfoxide or *N*-methyl pyrrolidine without additives or any surface modifications [85–87]. A solvent exchange procedure can also be used. Other possible processing techniques for the production of nanocomposites are filtration of suspensions of whiskers to obtain a film, and then immersion of this film in a polymer solution [26, 32, 88–94].

Although short fibres are being widely used for the processing of thermoplastic polymers and composites, very few studies have been reported concerning the processing of cellulose nanowhisler reinforced nanocomposites by melt extrusion methods [94]. An attempt to prepare nanocomposites based on cellulose nanowhiskers obtained from microcrystalline cellulose (MCC) and poly lactic acid (PLA) processed by a melt extrusion technique was

recently reported [94]. The suspension of nanowhiskers was pumped into the polymer melt during the extrusion process. An attempt to use polyvinyl alcohol (PVA) as a compatibilizer to promote the dispersion of cellulose nanowhiskers within the PLA matrix has also been reported [95].

Processing and characterisation of cellulose nanocomposites

Elastomeric composites with cellulose whisker reinforcement (INTEMA, Universidad Nacional de Mar del Plata, Mar del Plata, Argentina)

Among the many applications of polyurethanes, the group at INTEMA, in collaboration with the group of Dr. Auad (Auburn University, USA), have explored the use of segmented polyurethanes as thermally triggered smart materials. In order to separate the nanowhiskers that form the microfibrils entangled in the structure, the acid hydrolysis method has been utilized. The exact details of the method were based on those reported by Dong et al. [96].

The negative surface charge induced during the preparation of cellulose nanowhiskers allows a quite stable dispersion in water [96–98]. This result initially led researchers in the area to prepare composites for which matrix and filler could be dissolved/suspended in water such as latex [2, 99, 100], starch [66, 98, 101] and poly(ethylene oxide) (PEO) [57, 59, 60]. Further interest to extend the use of the nanowhiskers to other matrices has resulted in a study of surface modifications [59] and the use of surfactants [76] as stabilizing agents.

Mirta Aranguren and co-workers at INTEMA have expanded these options by producing a stable cellulose nanowhiskey suspension in dimethylformamide to be subsequently incorporated in different polyurethane (PU) matrices. This approach, which had been reported previously only by Dufresne's group [85], involves freeze drying of the initial aqueous suspension of the nanowhiskers, and then further redispersion in DMF. Berglund and co-workers [102] used a slightly different approach to produce high-strength cellulose–polyurethane elastomer nanocomposites.

One paramount condition for producing composites that take full advantages of the nano-size of the reinforcements is obtaining a good dispersion in the polymer. A cryogenic (liquid nitrogen) electron microscope image of cellulose nanowhiskers in polyurethane is shown in Fig. 4. It is clear from this image that a good dispersion of whiskers is achieved. The dispersion of the nanowhiskers in the unreacted liquid mixture of the polyol and isocyanate was studied through the rheological characterisation of these suspensions in the linear viscoelastic range (small

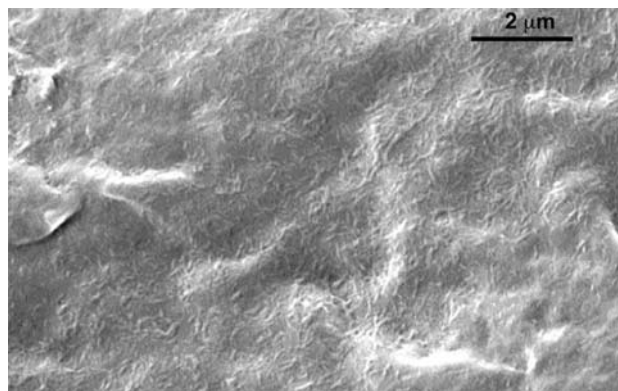


Fig. 4 A cryogenic electron microscope image of cellulose nanowhiskers dispersed in polyurethane [105]. Reproduction of image from [105] with permission from Wiley (© Wiley 2008)

deformations). Room temperature measurements on the non-catalysed system confirmed that the system does not react in these conditions during the time of the test. This was also confirmed by the Newtonian behaviour (constant viscosity) of the solution without the presence of nanowhiskers [86]. The suspensions, on the contrary, become strongly shear-thinning by adding minimum amounts of cellulose crystals. Analysis of the storage modulus of the suspension (Fig. 5) shows that a discernable change occurred with an increasing nanowhiskey concentration; from a Newtonian liquid (zero storage modulus for the solution without nanowhiskers) to a viscoelastic liquid and finally to a viscoelastic solid (cellulose nanowhiskey concentrations up to 2.5 wt%). At a frequency of 1 rad s^{−1}, a 2800-fold increment in modulus of the suspension resulted from increasing the nanowhiskey concentration from 0.25 to 5 wt%,

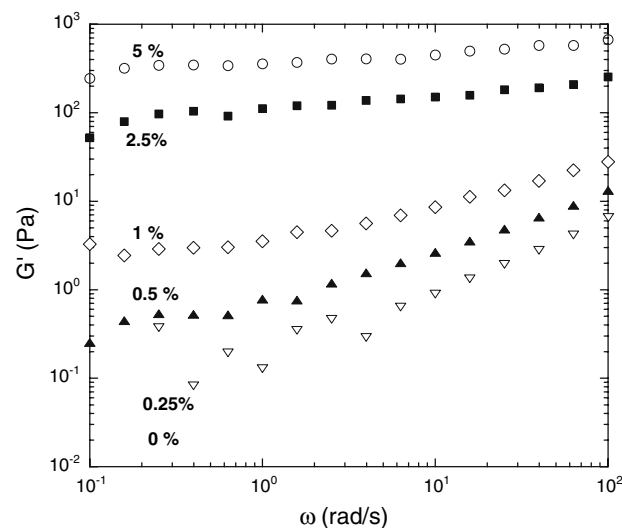


Fig. 5 Frequency sweep response of a mixture polyol-isocyanate and different percentages of cellulose nanowhiskers before reaction [86]. Reproduction of image from [86] with permission from Materials Research Society (© Materials Research Society 2006)

indicative of the formation of structure in the liquid, due to a pervading network of nanowhiskers. At 5 wt% (volume fraction = 0.033), a concentration that would be considered fairly low for typical fillers, the low frequency viscosity is almost 6000 times that of the unfilled liquid mixture. A simple calculation showed that the uncured suspensions displayed a percolation behaviour with a threshold concentration of 0.88 wt% [86]. A polymerization reaction has also been carried out in the presence of the nanowhiskers, where their surface hydroxyl groups became covalently bonded to the matrix. The interfacial reaction was confirmed by FTIR spectroscopy [86].

Among the many applications of polyurethanes, the group at INTEMA have explored the use of segmented polyurethanes as thermally triggered smart materials. These materials have the ability of “remembering” their original shape after being deformed and of recovering from it, as a response to an external stimulus [103]. Because of this capability, they are also referred to as “shape memory” polymers. This particular behaviour is the result of the two-phase molecular structure of segmented polyurethanes. One phase, called the soft segment phase, consists of a long chain diol that gives extensibility to the PU and can crystallize by cooling. This phase is responsible for fixing a transient shape and recovering the original one. The other phase, called the hard segment phase, is formed by the isocyanate and a short diol. Extensive hydrogen bonding occurs in this phase, which can also be crystalline. Hard segments are responsible for fixing the original shape. Based on the good dispersion of the cellulose nanowhiskers in a polyurethane network (as discussed previously), the INTEMA group also investigated the effect of reinforcing a shape memory PU with these nanofibres. The efficiency of the dispersion allows the original transparency of the polymer in the composite films produced to be maintained.

Segmented polyurethanes (SPU) were synthesized to allow the introduction of the cellulose nanowhiskers before the PU reaction (SPU1), so that they became covalently attached to the polymer, and also after the reaction (SPU1*), where only physically strong interactions are possible. In both cases, the reinforcement was dispersed in DMF by ultrasonication before being used.

The sequence of incorporation of the cellulose nanowhiskers has notable consequences on the behaviour of the segmented PU [104]. For the SPU1 experiment, the addition of cellulose nanowhiskers gave typical results for the reinforcement of elastomers; an increase in modulus and a reduced elongation at break (Table 3). In SPU1*, only physical interactions between the nanowhiskers and the polymer were present, which can be broken and re-built during the tensile test. The elongation at break is remarkably less affected by the reinforcement than in the case of SPU1 (971 and 142%, respectively).

Table 3 Tensile properties of the SPU and nanocomposite films: effect of cellulose incorporation sequence

	Modulus (MPa)	Elongation at break (%)
SPU, 0 wt% cell	4.54 ± 0.32	2165
SPU1, 1.0 wt% cell	6.56 ± 1.06	142 ± 28
SPU1*, 1.0 wt% cell	5.91 ± 0.50	971 ± 260

* Cellulose was incorporated after the PU had been reacted

More striking was the effect of the formation of covalent bonds between the cellulose and the PU on the shape memory behaviour of the resultant films. While the neat SPU and SPU1* showed shape memory behaviour, SPU1 did not have this capability. Cellulose covalently bonded to the matrix interferes, mainly, with the formation of the hard domains, which are responsible for fixing the original shape, thus erasing the functional property of the polymer.

From these results, it was clear that the cellulose nanowhiskers should be added to already synthesized PU if shape memory properties are to be maintained. Subsequent work was continued on composites prepared with a commercial SPU (IROGRAN PS455-203, Hunstman) and nanowhiskers. The shape memory behaviour of this system was studied through thermo-mechanical cyclic experiments. The samples were deformed at T_s , a temperature above the soft segment melting temperature ($T_{m,s}$) and below the hard segment melting temperature, so that the material exhibited rubber elasticity. After being deformed at T_s and subsequently cooled below $T_{m,s}$ under constraint, the deformed shape is fixed. When reheating at T_s , the original shape is substantially recovered due to the elastic energy stored during the deformation process.

All the nanocomposite films displayed shape memory properties (Fig. 6), with percentages of recovery of the order of 95% (with reference to the second and subsequent cycles). Although the rigidity of the composites was markedly improved by the addition of nanowhiskers (addition of just 1 wt% of cellulose nanowhiskers increased the tensile modulus by 54% and reduced creep by 36%), extensibility of the composites was not substantially reduced. On the other hand, the improved rigidity did not have a significant effect on the recovery of the material. The shape memory behaviour continued to be controlled by the polymer properties under the testing conditions [105].

Interfacial micromechanics of cellulose whisker nanocomposites (University of Manchester, Manchester, UK)

Work is underway at Manchester by Stephen Eichhorn and co-workers to investigate the reinforcing capabilities of cellulose nanowhiskers and nanofibrils in composite

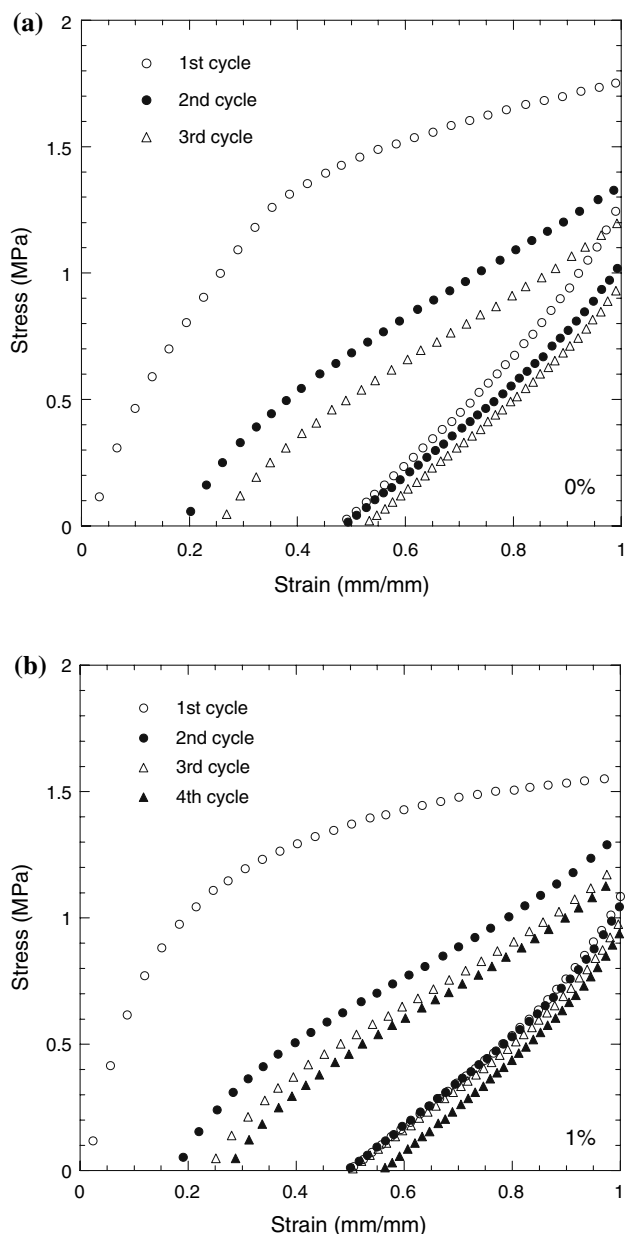


Fig. 6 Thermo cycling (shape memory behaviour) of **a** neat SPU (commercial) and **b** SPU containing 1 wt% nanocellulose [105]. Reproduction of image from [105] with permission from Wiley (© Wiley 2008)

materials, by directly measuring stresses within the nanofibres using Raman spectroscopy. This experimental approach relies on the measurement of a shift in the position of characteristic peaks within the Raman spectrum of cellulose when these nanocomposite materials are deformed. The materials that have been investigated so far are cellulose nanowhiskers produced by extraction from tunicates, acid hydrolysis of cotton and also sheets of BC. In order to deform the nanowhiskers, the group has been dispersing and embedding them in an epoxy resin beam and applying

deformation using a 4-point bending rig [17, 38]. The 4-point bending of these samples can be performed to place the whiskers in both tension and compression. Sheets of BC have been deformed in tension using a customised deformation rig that can be placed under the Raman spectrometer microscope.

The use of Raman spectroscopy to follow the deformation of polymer fibres and composites began in the 1970s with the discovery that peaks within the spectrum obtained from polydiacetylene single crystals changed position with the application of tensile deformation [106]. Following on from this, Galiotis et al. [107, 108] showed that it was possible to monitor this local deformation in both single Kevlar fibres, and when the same fibres were embedded in a composite material. This has led to a large number of papers on a variety of composites and fibre types, all of which have been recently reviewed [109]. In recent times this technique has been used to follow the deformation mechanisms in cellulose fibres and composites [110–118], and most recently cellulose nanocomposites [17, 23, 38].

The Raman spectrum of cellulose is dominated by a highly intense carbonyl (C=O) stretch mode, located approximately at 1095 cm^{-1} . It is the position of this band that has been mostly used to follow the local micromechanics of cellulose fibres, although other bands such as one located at 895 cm^{-1} , assigned to heavy atom modes (COC, COH) [119], have been used to follow the mechanics of cellulose fibre–polymer interfaces [115, 116]. The Raman band located at 1095 cm^{-1} has been assigned to the carbonyl stretch (C=O) mode of the ring [119] and the glycosidic stretching mode (–C–O–C–) [117, 120]. Typical shifts in the Raman band located at 1095 cm^{-1} , as a function of tensile deformation for cellulose nanowhiskers extracted from tunicates, are shown in Fig. 7a [17]. The shift plateaus at high strain due to the debonding of nanowhiskers from the matrix [17]. The shift in the peak position of the Raman band located at 1095 cm^{-1} , before debonding occurs, was found to be highly sensitive to the application of tensile deformation, which indicates that the molecular chains of the cellulose structure are being deformed. The rate of shift of this band with respect to strain has been related to the modulus of the whiskers. By assuming that the whiskers have a uniform stress microstructure, it is possible to show, using an analysis by Krenchel [121] for a 2D random in-plane distribution of reinforcing elements, that they have a modulus of 143 GPa [17]. A recent AFM bending experiment on single tunicate whiskers has confirmed this value [122]. Similar band shifts have been obtained for cellulose whiskers produced by acid hydrolysis of cotton, as shown in Fig. 7b [38]. Using the same analysis as used for the tunicate whiskers, moduli of 57 GPa (2D networks) and 105 GPa (3D

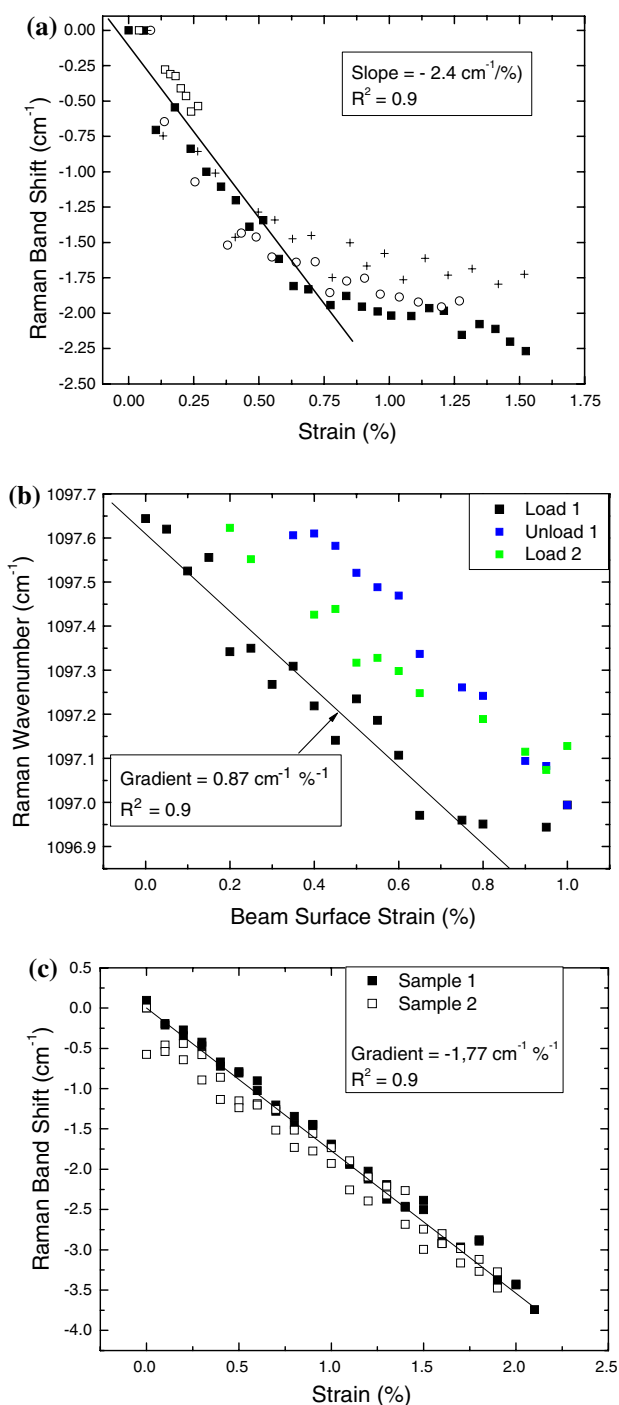


Fig. 7 Shifts in the band positions for the 1095 cm^{-1} Raman peak from **a** tunicate cellulose whiskers embedded in epoxy resin and deformed under 4-point bending in tension, **b** acid hydrolysed cellulose whiskers embedded in epoxy resin and deformed under 4-point bending in tension (samples were loaded and unloaded for 1 cycle) and **c** two fibrous networks of bacterial cellulose deformed independently in tension. Reproduction of image **a** from [17] with permission from American Chemical Society (© American Chemical Society 2005), **b** from [38] with permission from the American Physical Society (© American Physical Society 2008) and **c** from [23] with permission from Springer (© Springer 2008)

networks) were obtained. These values are significantly lower than for tunicate whiskers, which may be an indication of a lower crystallinity for these nanowhiskers, possibly induced by the chemical processing route. This low value for the modulus may also arise due to the smaller aspect ratio of cellulose nanowhiskers produced by acid hydrolysis compared to tunicate whiskers, and hence an inferior stress-transfer efficiency.

BC nanofibrils, as already discussed in the section “An overview of cellulose whisker and nanofibre properties (Grenoble Institute of Technology (INPG), International School of Paper, Grenoble, France)”, have a completely different morphology to the nanowhisker form. The nanofibrils of this form of cellulose generally form a network structure, rather like that seen in paper. The modulus of BC nanofibrils has been previously measured using an AFM cantilever method, yielding a value of 78 GPa [22]. Figure 7c shows a shift recorded in the position of the 1095 cm^{-1} band as a function of strain applied to a fibrous network of BC fibrils [23]. After confirming that the BC samples comprised a random 2D network of fibres, it was possible to show that the modulus of an individual fibril was 114 GPa [23]. This value, although higher than the one obtained by the AFM method, is lower than the crystal modulus of cellulose ($\sim 138 \text{ GPa}$) [10] and tunicate cellulose whiskers. The reason for this lower value was thought to be because BC has a lower crystallinity (about 80%) than tunicate cellulose nanowhiskers [23].

Exploiting hydrogen bonding for the processing of cellulose nanocomposites (Case Western Reserve University, Cleveland, USA)

Jeff Capadona, Stuart Rowan and Christoph Weder at Case Western University, USA, have been investigating the ability to switch hydrogen bonding in cellulose nanocomposites, to render them flexible when immersed in water.

Owing to their strongly interacting surface hydroxyl groups, cellulose nanowhiskers have a significant tendency for self-association [123]. This is, in principle, a very desirable feature for the formation of load-bearing percolating architectures within a host polymer matrix: the spectacular reinforcement observed for polymer/cellulose nanowhisker nanocomposites can be attributed to the formation of rigid nanowhisker networks in which stress transfer is facilitated by hydrogen-bonding among the nanowhiskers [17]. However, these same nanowhisker–nanowhisker interactions can also cause nanowhisker aggregation during the nanocomposite fabrication; this, of course, limits the extent of mechanical reinforcement [124, 125]. Good dispersion during processing is achieved when nanowhisker self-interactions are “switched off” by

competitive binding with a hydrogen-bond-forming solvent. Since water disperses most types of cellulose nanowhiskers well, the mixing of aqueous polymer solutions or emulsions with cellulose nanowhisker suspensions and subsequent film casting has for a long time been the primary method to process polymer/nanowhisker nanocomposites [43]. Furthermore, several “solubilizing schemes” have been explored to improve nanowhisker dispersibility in organic media, including the use of surfactants [125, 126], silylation [77], grafting of PEO [127] or maleated polypropylene [125] and acylation [128]. However, these surface modifications usually also reduce the interactions among the nanowhiskers and thereby the macroscopic mechanical properties of the corresponding nanocomposites. Turbak and co-workers have shown that stable suspensions of tunicate nanowhiskers with negatively charged sulfate groups, commonly produced by hydrolysis of the native cellulose with sulfuric acid [43, 123, 129], can also be produced in dimethylsulfoxide (DMSO) [130], *N,N*-dimethyl formamide (DMF) [85, 86], *N*-methyl pyrrolidine (NMP) [87], formic acid [87] and *m*-cresol [87] for example by lyophilization of aqueous whisker dispersions and re-dispersion of the resulting aerogel in the organic solvent [87]. Gray has produced similar cellulose nanowhisker dispersions in polar organic solvents using whiskers obtained from cotton [131]. Cellulose nanowhiskers without surface charges [132, 133], prepared by hydrolysis with HCl, do not disperse as well in aprotic solvents (DMSO, DMF, NMP); however, formic acid and *m*-cresol have been shown to also disperse non-charged nanowhiskers properly [87].

The ability to break hydrogen bonds and disperse cellulose nanowhiskers in hydrogen-bond-forming organic solvents opens the door for the fabrication of nanocomposites with a broad range of polymer matrices. For example, Weder and co-workers [134] reported nanocomposites derived from tunicate nanowhiskers and (semi)conducting π -conjugated polymers, including doped polyaniline (PANI) and a poly(*p*-phenylene ethynylene) (PPE) derivative with quaternary ammonium side chains. These materials were solution-cast from formic acid. Measurements of electrical conductivity, photoluminescence, and mechanical properties reveal that the nanocomposites synergistically combine the electronic characteristics of the conjugated polymers with the outstanding mechanical characteristics of the cellulose scaffold. Rowan and Weder reported percolating nanocomposites with polystyrene or an ethyleneoxide/epi-chlorohydrin copolymer (EO-EPI) matrix and systematically investigated such materials prepared with either tunicate or cotton nanowhiskers [135]. In the rubbery regime of these materials, which were prepared by solution-casting from DMF, the shear moduli (G') increased by over two orders of magnitude at a nanowhisker content of $\sim 20\%$ v/v (Fig. 8). This spectacular reinforcement is related to the

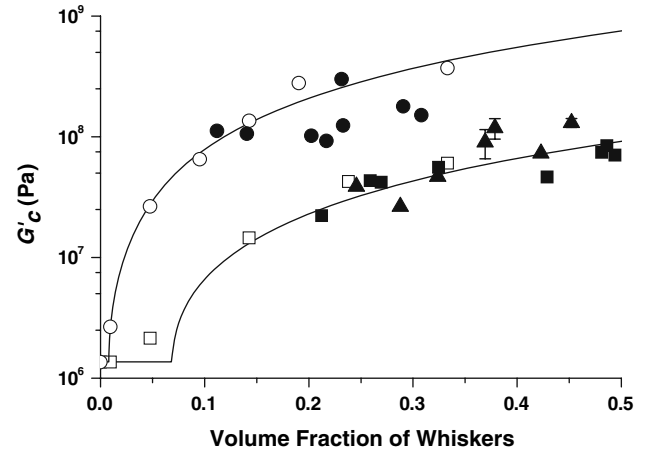


Fig. 8 Shear moduli G' of cellulose whisker nanocomposites with EO-EPI as a function of composition. The nanocomposites were fabricated by either solution casting (*open symbols*) or the template approach (*filled symbols*) and shear moduli G' were determined by DMTA at 25 °C. Data are for nanocomposites comprising cellulose whiskers isolated from tunicate whiskers (*circles*), cotton (*squares*) and microcrystalline cellulose (*triangles*), respectively. *Solid lines* represent predictions by the percolation model (Eq. 3). Reproduction of image with permission from AAAS (© AAAS 2008)

formation of a percolating nanofibre network in which stress transfer is facilitated by hydrogen-bonding between the nanowhiskers. The mechanical properties can be predicted by a percolation model, which expresses G'_c as [136, 137]

$$G'_c = \frac{(1 - 2\psi + \psi X_r)G'_s G'_r + (1 - X_r)\psi G_r^2}{(1 - X_r)G'_r + (X_r - \psi)G'_s} \quad (3)$$

with

$$\psi = X_r \left(\frac{X_r - X_c}{1 - X_c} \right)^{0.4} \quad (4)$$

where X_r is the volume fraction of the rigid (r, nanowhisker) component, G'_s and G'_r are the shear moduli of the neat soft (s, polymer) and rigid constituents, and ψ is the volume fraction of nanowhiskers. Figure 8 shows that Eq. 3 matches excellently with the experimentally determined G'_c values of EO-EPI nanocomposites comprising nanowhiskers isolated from tunicates and cotton [135].

To produce cellulose nanocomposites with hydrophobic polymers, Weder and Rowan introduced a template approach to nanocomposite fabrication [135]. The process is based on the formation of a three-dimensional template scaffold of well-individualized nanowhiskers, which is subsequently filled with a polymer of choice (Fig. 9a). The first step is the formation of a nanofibre template through a sol/gel process. For cellulose nanowhiskers this involves the formation of an aqueous nanowhisker dispersion, which is converted into a gel through solvent-exchange with a

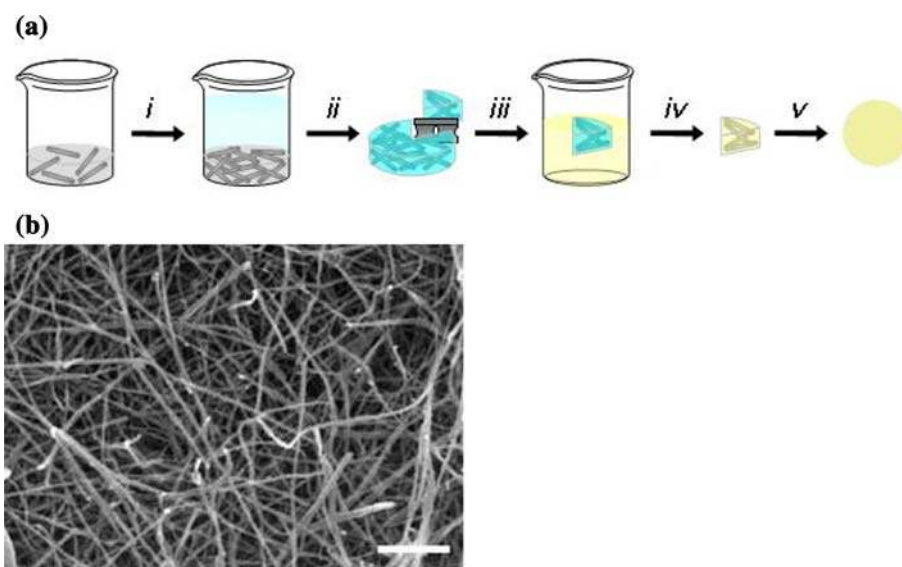


Fig. 9 **a** Schematic of the template approach to well-dispersed polymer/cellulose whisker nanocomposites. *i* A non-solvent is added to an aqueous whisker dispersion in the absence of any polymer. *ii* Solvent exchange promotes the self-assembly of a nanofibre gel. *iii* The gelled nanofibre scaffold is imbibed with a polymer by immersion in a polymer solution, before the nanocomposite is dried

(*iv*) and compacted (*v*). **b** Scanning electron microscopy image of a cellulose whisker aerogel, prepared by supercritical extraction of a whisker acetone gel (Fig. 2a, *ii*) (scale bar = 200 nm). Reproduction of images **a** and **b** from [135] with permission from Nature Publishing Group (© Nature Publishing Group 2007)

water-miscible solvent, for example acetone, that “turns” the hydrogen bonding between the nanowhiskers back on. That is to say replacing the water with a weaker hydrogen bonding solvent (e.g. acetone) results in the reestablishment of hydrogen bonding between the whiskers. This nanofibre template, which displays a percolating network structure (Fig. 8b), is then filled with a matrix polymer by immersing the gel into a polymer solution, in a solvent that does not disperse the nanowhiskers, and subsequent drying and shaping. Weder and Rowan demonstrated that this technique, which is somewhat different from other recently developed “impregnation schemes” [32, 93], is applicable to cellulose nanowhiskers isolated from tunicates, cotton, MCC and other nanofibres, such as carbon nanotubes [135, 138]. To evaluate the template approach, cellulose nanowhis-ker nanocomposites with EO-EPI were studied in detail (Fig. 8). Gratifyingly, the materials prepared by the template approach show identical mechanical properties to materials prepared by solution casting from DMF, indicative of the formation of percolating networks. It was previously difficult to incorporate cellulose nanowhiskers into non-polar polymers such as polypropylene or polybutadiene without surface modification or surfactants. Thus, probably the most important feature of the template approach is its capability to access percolating nanocomposites of otherwise immiscible components. This was demonstrated for polybutadiene/tunicate nanowhis-ker nanocomposites, which exhibit the mechanical properties predicted by the percolation model [135].

Recognizing that switching the interactions among nanowhiskers in a solid nanocomposite through an external stimulus could be a way to create a new type of mechanically adaptive material, Weder and Rowan took the concept of controlling nanowhis-ker–nanowhis-ker interactions one step further and introduced a new family of morphing materials, in which a chemical stimulus causes a significant and reversible stiffness change [139, 140]. The material’s design mimics the structural concepts at play in the dermis of sea cucumbers (Fig. 10) [140]. These creatures have the fascinating ability to rapidly and reversibly alter the stiffness of their skin when threatened. This dynamic mechanical behaviour is achieved through a nanocomposite architecture, in which rigid, high-aspect-ratio collagen fibrils reinforce a viscoelastic matrix (Fig. 10). The stiffness of the tissue is regulated by controlling the fibrillar interactions (through either non-covalent [141, 142] or covalent [143] bonds) and therewith the stress transfer, among adjacent collagen fibrils by locally secreted proteins. Rowan and Weder prepared and studied chemo-responsive materials, which mimic this architecture and whose morphing mechanical characteristics are very similar to those of the biological model [144, 145]. For example, they demonstrated that nanocomposites based on a rubbery poly(ethylene oxide) copolymer and a percolating network of tunicate nanowhiskers can exhibit a reversible, 40-fold modulus reduction upon exposure to a chemical regulator that switches off the hydrogen bonds among the nanofibres. This can be done through the

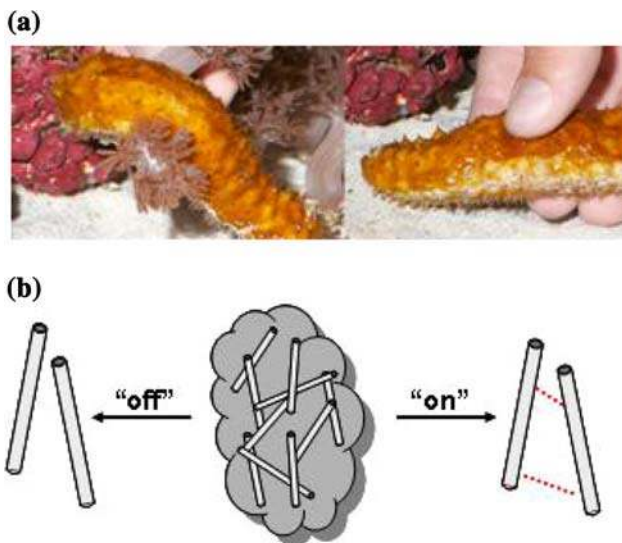


Fig. 10 **a** Pictures of a sea cucumber in soft and stiff state and **b** schematic of the switching mechanism in this biological model and the proposed biomimetic nanocomposites. The stress transfer among rigid, percolating nanofibres, and therewith the overall stiffness of the material, is controlled by a stimulus. Reproduction of images **a** and **b** from [139] with permission from AAAS (© AAAS 2008)

addition or removal of water, which acts as a chemical regulator that changes the hydrogen bonding between the whiskers within the polymer matrix, and at the same time presumably also impacts the whisker/matrix interactions. True to the intended design, the uptake of a small amount of water causes a dramatic modulus reduction (e.g. from 800 to 20 MPa for a composite comprising 19 vol% nanowhiskers); the original stiffness is restored when the composites are dried. Control experiments and analyses using mechanical models support the conclusion that the stiffness change is due to the designed mechanism of altered nanowhiskey–nanowhiskey interactions, rather than alternative effects such as plasticization of the matrix.

Polymerisation from the surface of cellulose whiskers
(University of Nottingham, UK)

Polymers can be grown from cellulose nanowhiskers directly using the surface hydroxyl groups as initiating sites, or the surface can be modified to introduce different initiator sites needed for controlled polymerisation techniques such as atom transfer radical polymerisation (ATRP) or reverse addition fragmentation radical polymerisation (RAFT). Wim Thielemans at the University of Nottingham is currently working on the surface modification of cellulose nanowhiskers and has recently reported on this approach, as have some other authors.

Surface initiated polymerisation techniques have been used extensively to graft polymers from the surface of macroscopic cellulose fibres [146–154]. Extending these

techniques to cellulose nanowhiskers is a logical step. Indeed, surface initiated polymerisation from the surface of cellulose nanowhiskers is currently receiving a large amount of attention and numerous presentations at conferences have been given [155–159]. However, to date, only four publications have appeared in the literature: Habibi et al. [48] reported the ring opening polymerisation of ϵ -caprolactone using the surface hydroxyl groups as initiator sites, while both Yi et al. [82] and Morandi et al. [83] reported the grafting of polystyrene using surface initiated ATRP after grafting of an isobutyryl bromide moiety to the surface of the nanowhiskers to introduce the necessary initiator sites. Xu et al. [160] reported on the grafting of 6-[4-(4-methoxyphenylazo) phenoxy] hexyl-methacrylate (MMAZO) from the surface of cellulose nanocrystals using ATRP after similarly grafting an isobutyryl bromide moiety to the surface of the nanowhiskers to introduce the necessary initiator sites. Simplified reaction schemes are given in Fig. 11.

Grafting of poly(ϵ -caprolactone) (PCL) from the surface of ramie cellulose nanowhiskers was performed in toluene using stannous octoate ($\text{Sn}(\text{Oct})_2$) as the catalyst [48]. The authors reported a final PCL content of 85 wt% in the modified nanowhiskers. However, as the modified nanowhiskers were not extracted but purified by a solubilisation–centrifugation sequence, “contamination” of the modified nanowhiskers by physically absorbed polymer chains could not be excluded. The PCL-grafted cellulose nanowhiskers were subsequently shown to increase the mechanical properties of PCL–cellulose nanowhiskey composites more than unmodified cellulose nanowhiskers, indicating great potential in nanocomposite reinforcement applications.

Surface initiated ATRP from the surface of cellulose nanowhiskers requires a two-step reaction: grafting of the initiator bearing a C–Br or C–Cl bond followed by polymerisation initiated by the addition of vinyl monomers and the catalyst $\text{Cu}(\text{I})\text{Br}$ (or $\text{Cu}(\text{I})\text{Cl}$ if using a C–Cl terminated initiator). An equilibrium between $\text{Cu}(\text{I})\text{Br}$ and $\text{Cu}(\text{II})\text{Br}_2$ (or between $\text{Cu}(\text{I})\text{Cl}$ and $\text{Cu}(\text{II})\text{Cl}_2$), the latter formed by extraction of bromide (or chloride) from the initiator giving rise to a radical, results in controlled polymer chain growth. For surface-initiated polymerisation, a dissolved sacrificial initiator is sometimes used, in addition to the surface initiator groups. The use of a sacrificial initiator allows the graft length to be tailored by changing the initial ratio $[\text{monomer}]/[\text{sacrificial initiator}]$ and the final conversion (given that the amount of initiating sites on the nanowhiskers is negligible compared to the amount of sacrificial initiator) [149]. In addition, the non-grafted polymer chains formed through polymerisation from the sacrificial initiator allows for direct determination of the grown polymer using standard polymer characterisation techniques to verify whether controlled

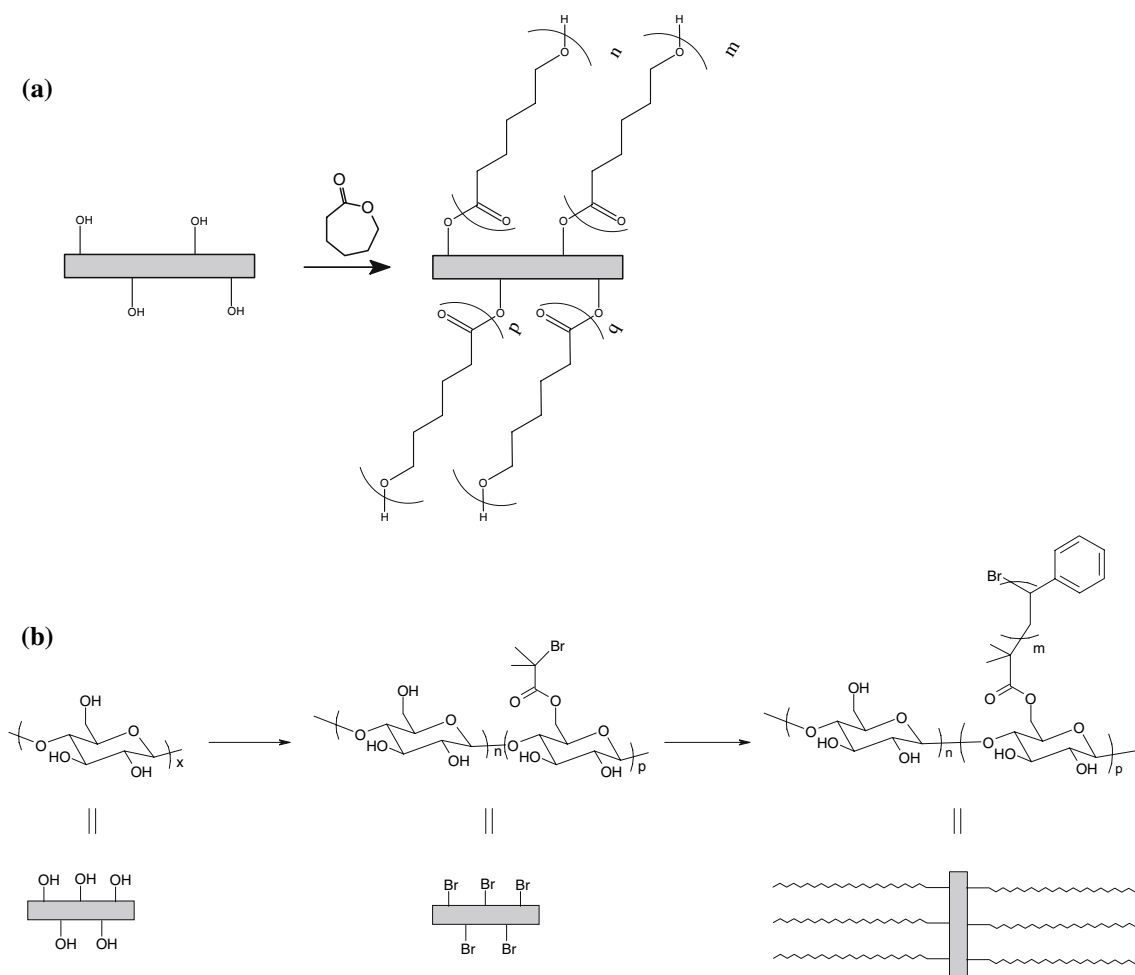


Fig. 11 Reaction scheme for the surface initiated polymerisation from the surface of cellulose nanowhiskers **a** by ring-opening polymerisation of ϵ -caprolactone, initiated from the surface hydroxyl groups and **b** by ATRP through grafting of 2-bromoisobutyl

bromide to introduce initiator sites followed by the controlled polymerisation of styrene. The grafted PCL chains are shown to have different length due to the uncontrolled nature of ring-opening polymerisation

polymerisation conditions were obtained. Yi et al. [82] first grafted 2-bromoisobutyl bromide to cotton nanowhiskers, followed by styrene polymerisation without the use of a sacrificial initiator. The final polystyrene content on the nanowhiskers, purified through soxhlet extraction, was determined to be 64 wt%. The grafted polymer, removed from the surface through acid hydrolysis of the ester linkage of the initiator, was found to exhibit a relatively low polydispersity ($PDI = 1.21$), showing good control of the polymerisation reaction. Through an investigation of the liquid crystalline phases of solutions of polystyrene-cellulose nanowhiskers, it was proved that the chiral nematic ordering of the cellulose nanowhiskers in solution is due to their shape, and not to the chiral nature of their surface. The same group also reported on successful grafting of poly(MMAZO) using ATRP without sacrificial initiator to the surface of the nanowhiskers derived from the acid hydrolysis of filter paper after

derivatisation using 2-bromoisobutyl bromide [160]. Grafting was confirmed by FTIR spectroscopy, TGA and DSC, and the grafting percentage was determined to be around 75% based on DSC data. However, no indication of the grafted chain lengths or control over the polymerisation was reported. The grafted nanowhiskers were subsequently tested for their liquid crystalline behaviour as a solution in chlorobenzene. A lyotropic nematic phase was seen to appear, with turbidity observed at room temperature for concentrations above 5.1 wt%. Morandi et al. [82] first studied various reaction conditions for the grafting of the initiator, 2-bromoisobutyl bromide, to the surface of nanowhiskers, followed by a series of polymerisations resulting in polystyrene brushes with different graft lengths. By controlling the grafting density of the initiator they were able to control the grafting density of the final polymer chains, while control over the polymerisation allowed them to control the length of the

polymer chains. A maximum surface modification with initiator up to 70% was achieved, as well as a polystyrene content up to 22 wt%. The control over the polymer chain length and grafting density is important when the surface properties need to be specifically tailored. They subsequently used polystyrene-grafted nanowhiskers to absorb 1,2,4-trichlorobenzene, a persistent organic pollutant, from water, opening up an interesting new application of surface modified cellulose nanowhiskers.

Analysis of dispersion of cellulose nanofibres and TEMPO oxidation to induce this dispersion (Virginia Tech, USA)

One of the main challenges in the use of cellulose nanowhiskers for polymer reinforcement is achieving a uniform distribution in a matrix material. Analysis of the nanowhisker distribution in cellulose nanocomposites by transmission electron microscopy is hampered by the limited contrast between the organic nanowhiskers and the organic matrix. Maren Roman at the Department of Wood Science and Forest Products, Virginia Tech, has developed a method for fluorescent labelling of cellulose nanowhiskers [161], potentially enabling the use of fluorescence or laser scanning microscopy to analyze particle distribution in cellulose nanocomposites, as has recently been applied to clay nanocomposites [162, 163].

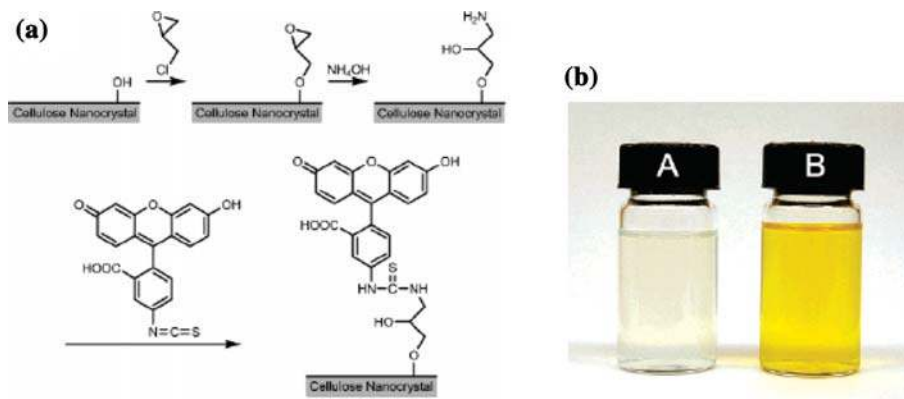
Labelling was achieved via a three-step reaction (Fig. 12) involving activation of the surface hydroxyl groups with epichlorohydrin followed by opening of the oxirane ring with ammonium hydroxide. The thus aminated crystal surface was then reacted with fluorescein-5'-isothiocyanate (FITC) resulting in a label density of one FITC moiety per 27 nm². The FITC-labelled cellulose nanowhiskers showed pH-sensitive absorbance in the blue and blue-green transition regions of light, resulting in a yellow appearance (Fig. 12). The fluorescence emission maximum of FITC occurs at 518 nm.

When analyzing particle dispersions in nanocomposites by fluorescence microscopy [162, 163], the degree of particle agglomeration is deduced from the homogeneity of fluorescence intensity across the specimen. Agglomerates are discernible by their higher local fluorescence intensity. Laser scanning microscopy with its ability to produce a series of thin (0.1–1.5 μm) optical sections of the fluorescent specimen, which can then be stacked to produce a 3D representation, offers the possibility to analyse the dispersion of fluorescent particles in nanocomposites in the *x*-, *y*-, and *z*-direction. Thus, fluorescent labelling of cellulose nanowhiskers in combination with fluorescence or laser scanning microscopy may become a valuable tool in the optimization of processing conditions for minimal agglomeration in cellulose nanocomposites.

Adequate dispersion and distribution of fibre reinforcement leads to optimum performance of the composite. The mechanical properties are also dictated by the length of the particle and more importantly the aspect ratio of the nanofibre. To this end, great effort has gone into describing the length and diameter of acid hydrolyzed cellulose nanowhiskers. Atomic force microscopy [164] and transmission electron microscopy [165] studies have quantitatively revealed average length and diameter of cellulose nanowhiskers. From these studies, nanowhiskers from wood have average lengths reported in the range between 105 and 150 nm and diameters 4.9–12 nm. Aspect ratios of the nanowhiskers are between 10 and 30. Other nanoscale celluloses like MFC maintain the length of the nanofibril providing higher aspect ratios. MFC is derived from unraveling the microfibril structure of the cell wall using severe mechanical treatment [166, 167]. This material has a unique mesh containing tens of nanometre diameter fibrils appearing to have micrometer lengths.

Since the original studies in the 1980s, MFC was produced with pretreatment stages that lower the energy requirement by loosening the hydrogen bonds amongst nanofibrils with enzyme and chemical treatments

Fig. 12 Reaction scheme for the labelling of cellulose nanowhiskers with fluorescein-5'-isothiocyanate and image showing aqueous suspensions of (A) cellulose nanowhiskers (0.8 wt%) and (B) FITC-labelled cellulose nanowhiskers (0.5 wt%). Reproduction of images **a** and **b** from [161] with permission from American Chemical Society (© American Chemical Society 2007)



[168, 169]. Recently, renewed interest in this material, which has dimensions of carbon nanotubes, has led to the development of low energy methods for isolation by such equipment as a blender or even a magnetic stir plate [170, 171]. Isogai and co-workers [172] showed that after cellulose pulps are oxidized in a heterogeneous suspension with 2,2,6,6 tetramethyl-1-piperidinyloxy (TEMPO) as a catalyst, the accessible primary hydroxyls on the surface of the microfibrils become modified with anionic carboxylate groups. As a result, the nanofibrils within the fibres can become unwound by mechanical agitation with repulsive forces between ionized carboxylates overwhelming the myriad of hydrogen bonds holding the nanofibrils together. Solutions of nanofibrils (3–5 nm diameter) are directly produced from the TEMPO-mediated oxidized pulp using mechanical agitation from a blender [173].

Scott Renneckar of Virginia Tech has a research program focussed on the nanoscience of cellulose and wood-based materials. Working with Johnson et al. [174], they have shown that TEMPO-oxidized pulp can be isolated by sonication without blending. A novel method to compare the effect of surface area on the mechanical reinforcement potential in thermoplastic composites was reported within that study; the sonication time of the TEMPO-oxidized pulp was varied influencing the yield of the nanofibrils. At 20 min of sonication, 98% of the pulp was converted into nanofibrils that had a width between 3 and 5 nm, according to TEM measurements (Fig. 13) [174]. These nanofibrils showed better reinforcement of hydroxypropylcellulose, relative to acid hydrolyzed nanowhiskers, and 20-pass MFC (isolated without pretreatment).

With AFM, Li and Renneckar [175] investigated the length and thickness of TEMPO modified wood pulp fibre that underwent extensive sonication and found nanofibrils with unique dimensions. After 30 min of sonication, the nanofibrils had an average thickness value of 1.38 nm and

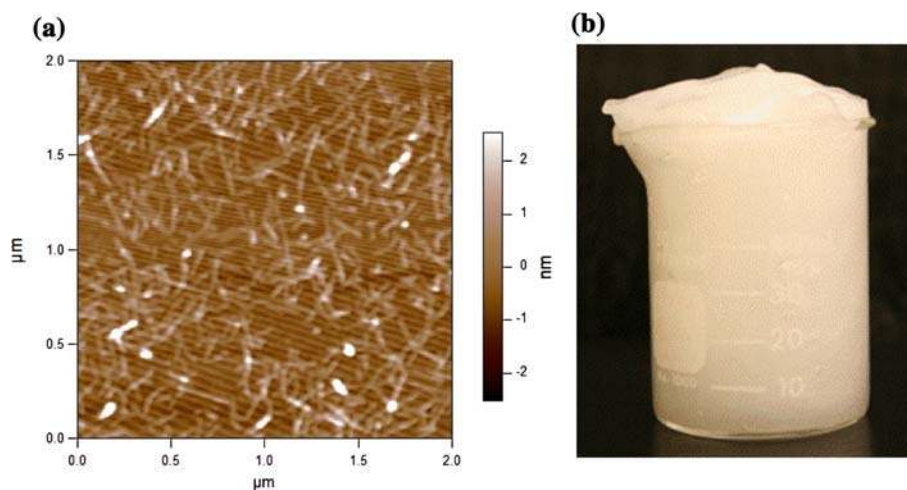
length of 580 nm. If the sonication time was increased to 4 h, the average thickness of the nanofibrils decreased to 0.74 nm and length to 260 nm. Interestingly, there was no correlation between length and thickness on individual nanofibrils and the average aspect ratio of these materials maintained a value around 500 [175]. This aspect ratio is remarkable for wood-based cellulose nanofibres and provides insight into the better composite performance highlighted by Johnson et al. [34].

Applications and new advances in cellulose nanocomposites

Reinforcing adhesives using cellulose nanofibres
(BOKU, Vienna, Austria)

Adhesive bonding is a routine processing step in the wood industry. Potential routes for performance improvements of wood adhesives focus very much on polymer chemistry [176] but currently little attention is paid to the role of fillers. The example of reinforced epoxy, an adhesive typically not used in the wood industry, shows that the addition of fibrous filler primarily improves the toughness of an adhesive bond [177–184]. Confirming results achieved in modelling studies [185, 186], a comparative study of a broad variety of wood adhesives [187–189] indicated a strong correlation between the toughness of an adhesive and the ultimate shear strength of corresponding wood adhesive bonds. Urea-formaldehyde resins (UF) are a widely used class of low-priced wood adhesives, which are well known for their pronounced brittleness and their tendency to develop microcracks (Fig. 14) which limits their mechanical performance. The combination of low price and poor mechanical performance makes UF an ideal candidate for studying the effect of added filler.

Fig. 13 Nanocellulose prepared by TEMPO-mediated oxidation of pulp; **a** atomic force microscopy height image of nanocellulose deposited on mica, **b** 4% concentration of nanocellulose foam after blending oxidized pulp for 18 min



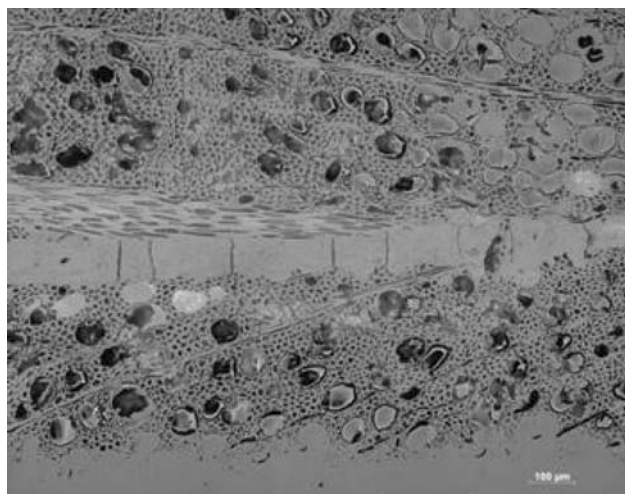


Fig. 14 Light microscope image of beech wood bonded with urea formaldehyde. Vertical cracks in the cured urea formaldehyde bond line are a typical result of the brittleness of this frequently used wood adhesive

A team led by Wolfgang Gindl and Josef Keckes on nanocellulose research has been investigating the reinforcement of adhesives. For this purpose, a 5% suspension (cellulose/water) of dissolving grade beech pulp obtained from Lenzing R&D was fibrillated by 20 passes through a laboratory refiner and, after diluting the suspension to 0.5% cellulose content, 10 passes through an APV-Gaulin high-pressure homogeniser at a pressure of 450 bar. Thereafter, the suspension was vacuum-dried to increase the cellulose content to 3.2%. A higher cellulose content would have been desirable in the wood adhesive, but this was limited by the rapidly increasing viscosity of the suspension with the decreasing water content. Lap-joint shear test specimens according to EN 302 [190] were prepared with beech wood using the following different adhesives:

- pure UF (W-Leim Spezial, Dynea);
- UF reinforced with untreated pulp fibres (5% cellulose per unit weight cured UF);
- UF reinforced with homogenised pulp fibres (5% cellulose per unit weight cured UF);

and tested to failure in a universal testing machine at a speed of $1.66 \times 10^{-5} \text{ m s}^{-1}$. The overall deformation in the overlapping region of the EN 302 specimens was recorded by means of a Zwick Macrosense clip-on deformation sensor.

The results of the mechanical tests (9 specimens each) are shown in Fig. 15. With a shear strength of $10.3 \pm 0.9 \text{ MPa}$, the UF used in the present study is well within the range of bond strengths observed for a variety of wood adhesives in a previous study. The addition of 5% untreated pulp fibres had no significant effect on the shear strength, which was $9.9 \pm 0.8 \text{ MPa}$. In strong contrast, the addition of

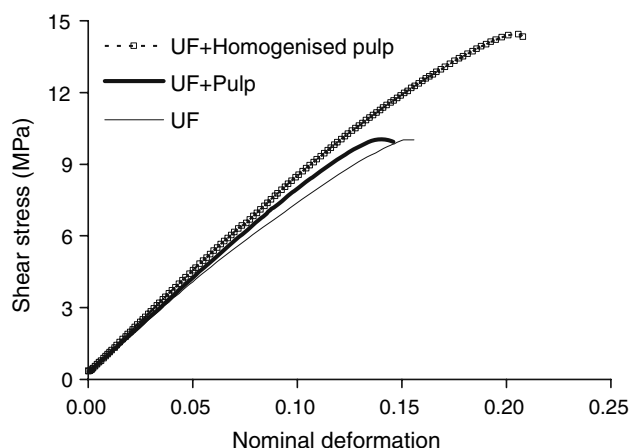


Fig. 15 Shear stress of different lap-joint specimens plotted over deformation (the deformation is only nominal because it comprises axial and shear contributions from both the wood and the adhesive)

5% refiner-treated and high-pressure homogenised cellulose resulted in a significant increase of shear strength to a value of $13.8 \pm 1.4 \text{ MPa}$. The stress–strain curves shown in Fig. 15 indicate a significantly higher deformation at failure for the specimens reinforced with homogenised pulp fibres, suggesting that the UF adhesive was possibly toughened by the addition of fibrillated cellulose. This assumption is supported by the fact that cracks, which are frequent in conventional UF bond lines (Fig. 14), were not found when cellulose-reinforced UF was used.

The value of 13.8 MPa for the shear strength measured for cellulose-reinforced UF adhesive bonds is higher than the average shear strength of 10 MPa observed for structural adhesives such as phenol–resorcinol–formaldehyde, melamine–urea–formaldehyde, and one-component polyurethane [187]. This indicates that the addition of fibrillated cellulose to UF significantly improves the mechanical performance of wood adhesive bonds, thus opening up new fields of application for UF, which is currently used only in the non-structural field.

Optically transparent cellulose nanocomposites for electronic displays (RISH, Kyoto University, Kyoto, Japan)

Flexibility is an essential characteristic not only for future electronic devices such as displays and solar cells, but also as materials suitable for roll-to-roll production processes. Roll-to-roll processing enables the continuous deposition of functional materials such as metal wiring, transparent conductive films and gas barrier films on a roll of optically transparent flexible plastics, allowing a simple and inexpensive processing suitable for the manufacture of flexible electronic devices. Most plastics however have a large

coefficient of thermal expansion (CTE), of the order of 50 ppm K^{-1} , and flexible plastics in particular exhibit extremely large CTEs exceeding 200 ppm K^{-1} . Functional materials deposited on plastic substrates could therefore break or be damaged by the temperatures involved in the assembly and in the mounting processes due to the mismatch of the coefficients of thermal expansion from the different materials. Hence, the development of flexible transparent plastics with a low coefficient of thermal expansion, similar to glass (8 ppm K^{-1}), is essential to realize roll-to-roll processing. In this context, the reinforcement of transparent plastics by nano-sized fibres is considered to be an ideal way, since elements with diameters less than one-tenth of the visible light wavelength are free from light scattering, allowing optically transparent composites.

HiroYuki Yano and colleagues at RISH, Kyoto University, have demonstrated experimentally the advantage of nanoscale reinforcements using cellulose nanofibres (bundles of cellulose microfibrils) [26]. They obtained transparent composites by reinforcing various types of resins (Fig. 16a), even at fibre contents as high as 70 wt%, using BC nanofibres 10 nm thick and 50 nm wide. Because BC nanofibres are bundles of semi-crystalline extended cellulose chains, the resulting nanocomposites are not only highly transparent, but also exhibit a low CTE comparable to silicon (4 ppm K^{-1}) and mechanical strength comparable to mild steel. Due to the nanofibre size effect, high transparency was obtained against a wide distribution of resin refractive indices from 1.492 to 1.636 at 20°C , being also less sensitive to refractive index variations caused by the elevation of ambient temperature up to 80°C [191]. Moreover, they have succeeded in depositing an electroluminescent layer on these transparent BC nanocomposites, as shown in Fig. 16b.

They also reported that the addition of only 7.4 wt% of BC nanofibres, which deteriorated light transmittance by

only 2.4%, was able to reduce the CTE of an acrylic resin from 86 to 38 ppm K^{-1} [192]. Subsequently, they succeeded in the production of composites possessing an ultra low CTE of 4 ppm K^{-1} at a fibre volume fraction of 5% [193]. The flexibility and high thermal stability were attained by reinforcing a low Young's modulus transparent resin with low CTE and high modulus cellulose nanofibres forming an in-plane network layered structure of BC. In addition, they showed that acetylation significantly reduces the hygroscopicity of BC nanocomposites, while maintaining optical transparency and thermal stability [194, 195]. It was also demonstrated that acetylation prevents the thermal deterioration of the composites [194].

The successful reinforcement of transparent plastics with BC engendered a new interest in plant cellulose microfibrils. Iwamoto et al. [196] attempted the fibrillation of pulp fibres by using a grinding treatment. The grinding treatment resulted in the successful fibrillation of wood pulp fibres into nanofibres. However, repeated passes through a grinder to obtain uniform nanofibres caused a reduction in the crystallinity and degree of polymerisation of cellulose nanofibres, resulting in an increase in thermal expansion and a decrease in the mechanical properties of the composites [197].

In wood cell walls, the cellulose microfibril bundles of 12–16 nm in width exist encased by the embedding matrix. However, the drying process in typical pulp production generates strong hydrogen bonding between the bundles after the removal of the matrix, which makes it difficult to obtain thin and uniform cellulose nanofibres. Hence, Abe et al. [198] kept the material in the water-swollen state after the removal of the matrix, and succeeded in obtaining cellulose nanofibres with a uniform width of 15 nm using only one pass through the grinder (Fig. 17). Under these conditions, the CTE improved from 18 ppm K^{-1} of once-dried commercial pulp-based nanocomposites to 13 ppm K^{-1} of the never-dried pulp-based nanocomposites.

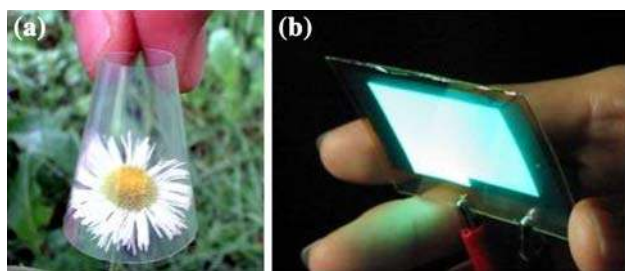


Fig. 16 **a** Flexible transparent nanocomposites reinforced with bacterial cellulose (BC) nanofibres and **b** luminescence of an OLED deposited onto the transparent BC nanocomposite. Reproduction of image **a** from [26] and **b** from [193] with permission from Wiley (© Wiley 2005 and 2008)

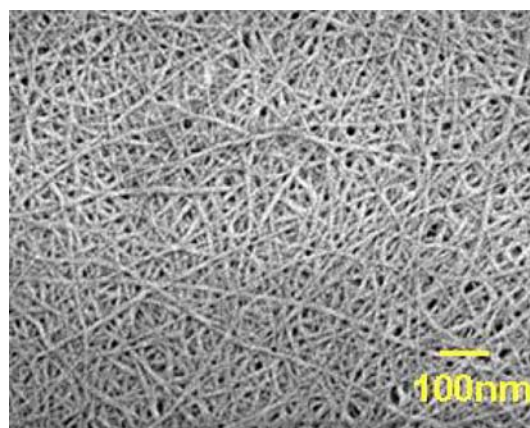


Fig. 17 Cellulose nanofibres obtained by a grinder treatment

Following this pioneering work on never-dried pulp, Iwamoto et al. [92] studied the effect of hemicellulose on the nanofibrillation and mechanical properties of nanofibre reinforced composites, and reported that hemicelluloses act as inhibitors of the coalescence of cellulose nanofibres (microfibril bundles) during drying, and facilitate the nanofibrillation of once-dried pulp. Furthermore, hemicelluloses provide adhesion between nanofibres, contributing to the reduction of thermal expansion and enhancement of mechanical properties of the composites. Shimazaki et al. [90] also reported the excellent thermal conductivity of the cellulose nanofibre/epoxy resin composites.

Recently, Nogi et al. [199] developed what might be best described as an optically transparent paper. It is a foldable nanofibre material with low thermal expansion ($\text{CTE} < 8.5 \text{ ppm K}^{-1}$) consisting of 100% cellulose nanofibres (Fig. 18) with the same chemical constituents of traditional paper and also a similar production process. The only difference is in the fibre width and the size of the interstitial cavities or pores. The foldable, low CTE, and optically transparent nanofibre paper could be a perfect match as substrates for continuous roll-to-roll processing.

Cellulose microfibril-based nanocomposites for semi-structural applications (RISH, Kyoto University, Kyoto, Japan)

The exploitation of cellulose nanofibrils to produce high-strength composites began by selecting wood samples with the highest modulus and strength based on the sound velocity along the specimens, impregnating them with a low molecular-weight phenolic resin and hot pressing at pressures of 30 to 50 MPa [200]. As the resin acted as a plasticizer during compression and the curing fixed the deformed and densified conditions, Young's modulus and bending strength of the compressed wood achieved values around 40 GPa and 400 MPa, respectively. Later, to increase the



Fig. 18 The 100% cellulose nanofibre sheet is as foldable as traditional paper. Reproduction of image from [199] with permission from Wiley (© Wiley 2009)

cellulose nanofibril content, the matrix substances of wood veneers were removed by a mild chemical treatment [201]. The total weight was reduced by 30% and the combination of raw material selection and the removal of non-cellulosic constituents ultimately resulted in composites with a bending modulus of 62 GPa and a strength of 670 MPa [202]. Even though these materials could not be strictly called nanocomposites, they were based on the reinforcing potential of cellulose nanofibrils. Instead of disintegrating wood into individualized fibrils, the original structure of unidirectionally oriented fibres and fibrils of wood was preserved to achieve ultimate strength of the final composites.

The production of anisotropic materials based on cellulose nanofibrils extracted from wood, in a morphology known as MFC, was realized by molding MFC without any adhesive [203]. This material achieved a bending strength of 250 MPa. The addition of just 2 wt% oxidized starch doubled the yield strain, and the bending strength increased to 310 MPa. The initial water content of MFC, about 90 wt%, was slowly extracted while applying the moulding pressure, so the capillary forces of the intervening water being evaporated drew the nanofibrils together, connecting them by hydrogen bonds as the material dried.

Later on, sheets similar to paper obtained by filtration and drying of MFC slurries were impregnated with a phenol formaldehyde resin (PF), stacked in layers and compression moulded under pressures as high as 100 MPa [32]. The mechanical properties obtained were substantial; a Young's modulus of 19 GPa and a bending strength of about 370 MPa at a fibre content around 10 wt%. When the degree of fibrillation was varied from non-fibrillated pulp through MFC, it was found that there was no change in strength for composites prepared using pulp with fibrillation limited to the fibre's surface. A stepwise increase however occurred when a complete breakage and fibrillation of the cell wall of the fibres was achieved [88]. Microfibrillation eliminates defects or weaker parts of the original fibers that would act as the starting point of cracks, but also increases interfibrillar bond densities creating a structure that favours ductility. When compared to microcomposites made with non-fibrillated pulp fibres, MFC nanocomposites had a slightly higher Young's modulus, but exhibited significantly higher bending strength as a direct consequence of an enhanced strain at fracture. As reported in the section "[Optically transparent cellulose nanocomposites for electronic displays \(RISH, Kyoto University, Kyoto, Japan\)](#)", similar nanocomposites can and have been produced using BC. As a comparison to this material, the BC samples had a Young's modulus of 28 GPa and a bending strength in excess of 400 MPa [204].

To increase the resin content and make cellulose-based composites less susceptible to degrading agents like water or moisture, yet averting the brittle nature of PF, MFC was

mercerized with a strong (20 wt%) NaOH aqueous solution to verify its effectiveness on nanocomposites [205]. Alkali treatment is a proven process to enhance toughness in cellulose-based microcomposites [206, 207]. The composites with a resin content about 20 wt% exhibited a two-fold increase in strain to failure compared to untreated MFC composites, with the same resin content. Young's modulus decreased slightly, but the bending strength remained practically unaltered due to the increased strain. Mercerization of MFC sheets caused an in-plane contraction, likely due to the contraction of the cellulose nanofibrils [208]. This, in turn, could be related to an entropy increase in less ordered regions along the nanofibril direction [209]. A possible explanation for the NaOH-treated MFC composites' enhanced ductility might be the straightening of contracted amorphous cellulose molecules when under load.

As cellulose is a naturally occurring polymer, the use of a matrix resin equally bio-based has been also considered. To deliver good dispersion of nanofibres in PLA, the water in MFC was replaced by an organic solvent (acetone) and subsequently mixed with a fully amorphous grade PLA previously dissolved in the same solvent [210]. The mixture had the solvent extracted by evaporation, compounded by a kneader, and thin films were obtained by compression molding of the compounds. A 10 wt% MFC load resulted in modulus increase of 40% and strength gains of 25% over the neat PLA without a reduction in yield strain. In cellulose nanocomposites produced by film casting, the reinforcement is accomplished through the formation of a percolated network of nanofibres connected by hydrogen bonds [2, 65], but in compression moulding, such interactions are very limited [211, 212]. However, nanofibril bundles can produce networks by mutual entanglements [52, 213], resulting in similar reinforcing capability in moulded composites. Later, the method was extended to a semicrystalline grade of PLA [214], improving tensile modulus and strength in both amorphous and crystallized states, and also enhancing the heat resistance (storage modulus at high temperature), which was not possible with the fully amorphous PLA grade. More recently, an environmentally benign papermaking-like process, to obtain sheets from an aqueous suspension of cellulose nanofibres and PLA fibres and subsequent hot pressing a stack of the dried sheets, was proposed [215]. The method is quite simple with potential implementation at an industrial scale. A summary of the stress-strain behaviours from all of these materials is given in Fig. 19, with comparative data for a magnesium alloy (Mg alloy) and glass fibre reinforced plastic (GFRP). It is clear the mechanical properties exceed GFRP and are favourably compared with the Mg alloy, suggesting that they have great potential in low-weight engineering applications.

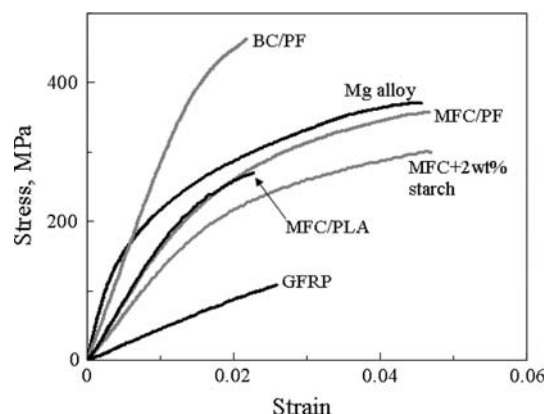


Fig. 19 Typical stress-strain curves of nanocomposites based on cellulose microfibrils compared with those of conventional high-strength materials; bacterial cellulose/phenol formaldehyde (BC/PF), magnesium alloy (Mg alloy), microfibrillated cellulose/phenol formaldehyde (MFC/PF), microfibrillated cellulose/poly(lactic acid) (MFC/PLA), microfibrillated cellulose/2 wt% starch (MFC + 2 wt% starch) and glass fibre reinforced plastic (GFRP)

Cellulose/DNA hybrid nanomaterials (Virginia Tech/ Oregon/Portland State University, USA)

The fabrication of nanoscale devices is a challenging, but potentially important, technology that is currently the subject of a great deal of research and a little amount of progress [216–218]. Such nanoscale constructions utilizing a bottom-up approach to device building have many foreseeable applications in areas as diverse as miniaturized electronics, sensors, and biomedical devices. One of the most chemically versatile, abundant and inexpensive nanoparticles available for nanodevice development is the cellulose nanowhisker. Recent research on utilizing DNA oligomers to control the bonding of cellulose nanowhiskers has been undertaken by John Simonsen and co-workers. These proof of concept experiments set the stage for the pursuit of future developments in nanoscale devices through the utilization of low cost and chemically versatile cellulose nanowhiskers. Whilst not a composite *per se* the combination of cellulose nanowhiskers with DNA opens up the possibility of structuring biomaterial-based nanocomposites in the future through self-assembly methods.

Two different DNA oligomers were used in this study, a 20-mer: {5'-aminoC6/GCT CTA CCT GAC TAG CTC GT-3'} and its complement, and a 78-mer: {5'-aminoC12/CAG TCA GAT CAG GAC ATG AGA TCA TGC TAG TCA GCT ACG GTC ACT GCT AGT CCG TAC GTA CCA TGT CAT AGT GTA GGT-3'} and its complement.

The cellulose nanowhiskers were prepared by acid hydrolysis and then the C6 carbon was carboxylated using TEMPO oxidation [219]. FTIR transmission spectra of the carboxylated cellulose nanowhiskers confirmed the reaction. A carboxyl content of 1.73 mmol of CO₂H per gram

of nanowhiskers (starting material) was calculated. This C6 carboxylate group was reacted with the amino group on the modified DNA oligomer via EDC-facilitated amide formation yielding DNA grafted cellulose nanowhiskers (DNA-g-nanowhiskers) [220, 221].

Both dynamic light scattering (DLS) and UV hyperchromicity of single strand and duplexed DNA were used to observe the combining of the DNA-g-nanowhiskers at low temperature and their separation, or “melting” at higher temperatures. Atomic force microscopy (AFM) was used to image the duplexed DNA-g-nanowhiskers.

Typical reported surface areas for cellulose nanowhiskers are $\sim 250 \text{ m}^2 \text{ g}^{-1}$ [222]. At the highest grafting value $47 \mu\text{mol DNA g}^{-1}$ of nanowhiskers was achieved for the C_{12} oligomer. This gives an estimate of $\sim 9 \text{ nm}^2/\text{DNA}$ graft, which suggests a spacing of $\sim 3 \text{ nm}$ between DNA backbone chains extending from the surface. Since the cross-sectional extent of a (duplexed) DNA molecule is on the order of 2 nm [223], there may be a crowding factor involved and the longer C_{12} modifier on the DNA oligomer may provide more flexibility for the graft, and thus accommodating a higher crowding factor.

The modelling equation for DLS assumes the particles are spherical. The cellulose nanowhiskers are not spherical, but DLS-derived hydrodynamic radius of the equivalent sphere was used as a rough marker to determine the extent of agglomeration of the needle-shaped whiskers.

Solutions of nanowhiskers functionalized with complementary oligonucleotides were mixed and hybridized (duplexed) in 0.1 M phosphate buffer at 0.5 M ionic strength for 12 h . DNA-g-nanowhis-ker dispersions showed a substantial increase in hydrodynamic size (particle diameter) when compared to ungrafted carboxy-nanowhiskers and ssDNA-g-nanowhiskers.

Duplexed DNA-g-nanowhiskers were suspended in 0.1 M phosphate buffer with 0.5 M ionic strength at 75°C and then slowly cooled at a rate of $5 \times 10^{-3}^\circ\text{C s}^{-1}$. The effective diameter of the duplexed particles was measured at 10°C intervals. As the temperature was reduced from 75 to 45°C , the measured particle size increased significantly, indicating that the grafted oligomers were duplexing and agglomerating the cellulose nanowhiskers (Fig. 20). After 5 min the temperature was again raised to 75°C without removing the sample from the instrument. The particle size decreased, indicating the duplexed oligomers were disassociating and the cellulose nanowhiskers spontaneously re-dispersed in the suspension. The particle size returned to its original number, indicating complete re-dispersion of the DNA-g-nanowhiskers with the completion of a full cycle of alternate cooling and heating. This indicates that duplex formation and the subsequent disassociation above the “melting temperature” (T_m) of the DNA are reversible.

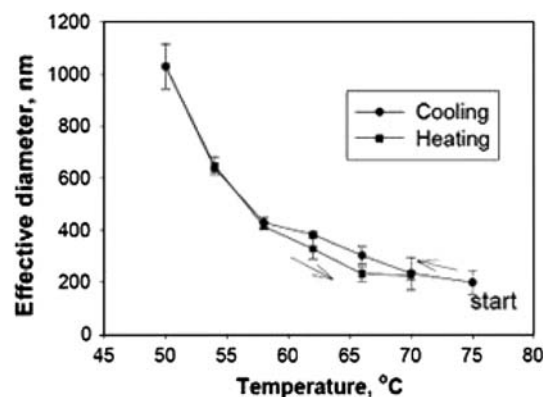


Fig. 20 DLS cycling data showing repeatable DNA duplex formation and melting with temperature. Reproduction of image from [219] with permission from American Chemical Society (© American Chemical Society 2009)

UV-vis spectroscopy was used to confirm the duplex formation and subsequent disassociation (typically called “melting”) of DNA-g-nanowhiskers by tracking the hyperchromicity of the DNA duplex. As the complementary single-stranded DNA undergo duplexing, the extinction coefficient of the resulting double-stranded DNA (dsDNA) will be reduced. As a result, UV absorption of dsDNA (at 260 nm) will be lowered. When the temperature is raised above the “melting” temperature T_m of DNA, the duplex should uncoil and the UV absorption should increase. Thus the formation and “melting” of DNA duplexes can be determined by measuring the absorption at 260 nm as a function of temperature. First, the UV absorption of the double-stranded DNA oligomers alone was recorded at 45°C . The temperature was gradually increased from 45 to 85°C at a $0.03^\circ\text{C s}^{-1}$ ramp rate, recording the absorption (at 260 nm) in 3°C intervals. The resulting “melting curves” of the oligomers showed a broad range from ~ 60 to $\sim 80^\circ\text{C}$. Next, the DNA-g-nanowhiskers were cycled through a similar temperature range. The “melting” behaviour of the DNA oligomers grafted on the cellulose nanowhiskers was similar to that of the unbound oligomers (Fig. 21). This indicates that the grafting process did not affect the duplexing behaviour of the oligomers, i.e., their hyperchromicity. The observed “melting” behaviour in the UV-vis experiment was similar to the DLS experiment with the exception of the hysteresis in the UV-vis. It is thought that the hysteresis is due to the reaction time required for DNA to duplex. The temperature ramp rate in the UV-vis experiment was $0.03^\circ\text{C s}^{-1}$ while in the DLS experiment it was much slower, $5 \times 10^{-3}^\circ\text{C s}^{-1}$. Thus in the DLS experiment, the DNA had more time to duplex, or “melt” while in the UV-vis experiment, the faster temperature ramp rate resulted in a hysteresis effect. Together, the DLS and UV-vis results provide convincing

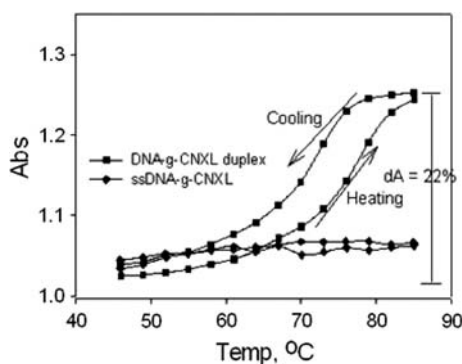
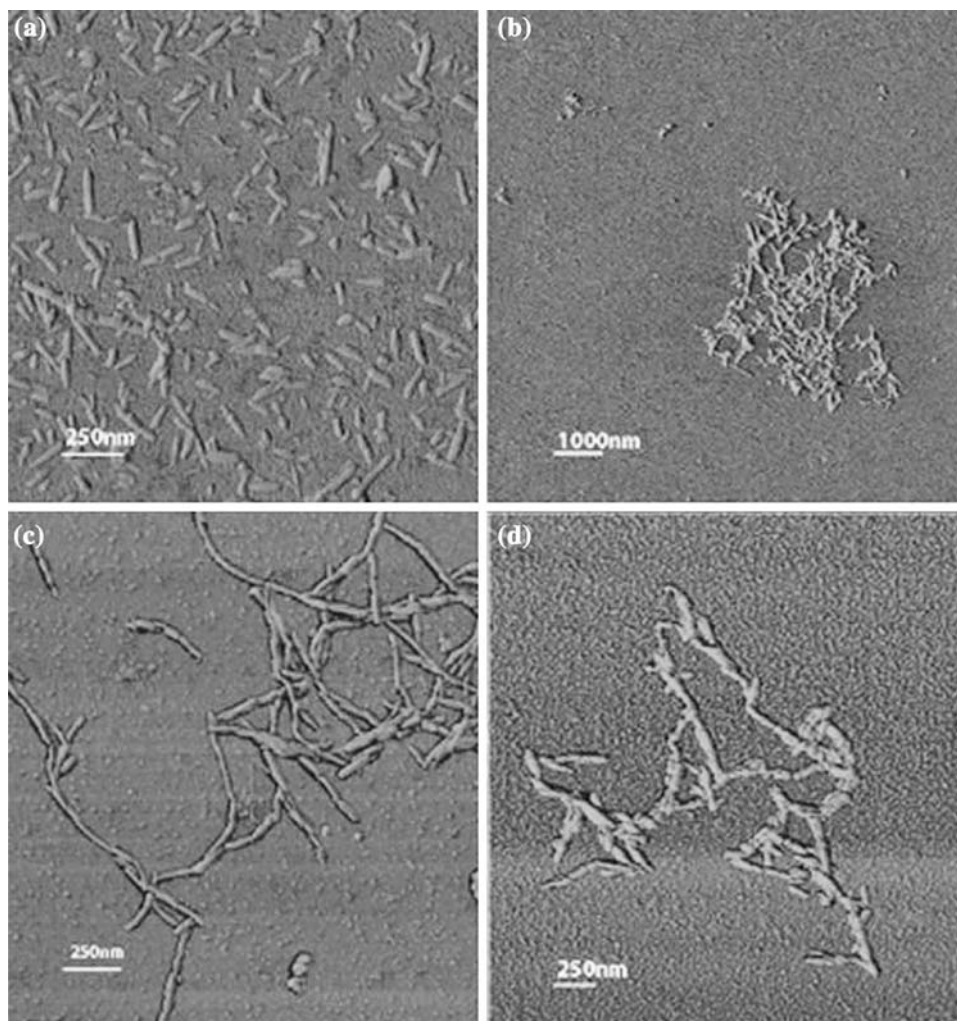


Fig. 21 UV cycling curve for cellulose nanowhiskers grafted with complementary strands of DNA oligomer. Reproduction of image from [219] with permission from American Chemical Society (© American Chemical Society 2009)

evidence of the formation of a DNA/cellulose nanowhisler hybrid material via DNA duplex formation.

The morphology of the self-assembled DNA-g-cellulose nanowhisler duplex dispersion was examined using AFM.

Fig. 22 Duplexed DNA-g-cellulose nanowhiskers formations dried from the aqueous dispersion and imaged using atomic force microscopy (AFM); **a** cellulose nanowhiskers grafted with single strand DNA. **b** Duplexed DNA-g-cellulose nanowhiskers at low magnification. **c, d** Duplexed DNA-g-cellulose nanowhiskers at high magnification. Reproduction of image from [219] with permission from American Chemical Society (© American Chemical Society 2009)



Typical images (Fig. 22) indicate that duplexed DNA-g-cellulose nanowhiskers formed branched structures whereas much looser and randomly distributed materials were observed in the images of control experiments with ungrafted or ssDNA-g-nanowhiskers (Fig. 22a). It is expected that the DNA-g-nanowhiskers when duplexed should exhibit strong side-to-side physical interaction due to hydrogen bonding between complementary DNA strands bonded on the nanowhisler surface. Side-to-side interactions between ssDNA grafted nanowhiskers are evident from the AFM images (Fig. 22b, d). One AFM image indicates a tendency of the DNA-g-nanowhiskers to interact end-to-end while duplexing (Fig. 22c), although both interaction schemes appear to be always present to some extent. This curious behaviour is puzzling and suggests further research is needed on this system. The side-to-side bonding is expected due to the grafting frequency of the DNA oligomers on the nanowhisler surface.

The end-to-end bonding may also be an artefact of the isolation procedure, since the imaged formations are dried from their aqueous dispersions. This behaviour of

hybridized DNA-g-nanowhiskers requires additional investigation. However, this initial study sets the stage for further utilization of DNA to provide ordered structures of cellulose nanowhiskers with potential applications, including as scaffolding for tissue engineering applications.

Hierarchical cellulose nanocomposites (Imperial College London, UK)

Natural nanofibres are already being considered for numerous composite applications [44, 224]. Advantages of natural fibres are their low cost, low density, renewability and biodegradability. The main drawbacks are their dimensional inconsistency and variability in mechanical properties, relatively low tensile strength and their limited thermal stability, which limits the number of matrices that can be reinforced by natural fibres [225]. Simple natural fibre reinforcement of renewable polymers has thus failed to achieve the performance of conventional composite materials, such as glass fibre/polypropylene. New renewable reinforcing agents such as BC fibrils produced by bacteria belonging to the genera *Acetobacter*, *Agrobacterium*, *Alcaligenes*, *Pseudomonas*, *Rhizobium* or *Sarcina* may provide a breakthrough for composite applications [21]. BC fibrils have diameters ranging from 10 to 100 nm [226]. Studies of the properties of BC have shown that it has a high Young's modulus of up to 138 GPa [10, 22, 23], a tensile strength of 2 GPa and thermal expansion of only $0.1 \times 10^{-6} \text{ K}^{-1}$, which are extremely attractive for applications as reinforcement in composites [21, 26]. The measured Young's modulus of BC is comparable to or even exceeds that of glass fibres but at a lower density. In addition to its light-weight and attractive mechanical properties, BC is non-toxic, renewable and biodegradable.

Commonly used natural fibre composite processing methods, such as blending, extrusion and even solvent casting/impregnation, have significant disadvantages when used for the preparation polymer nanocomposites containing anisotropic reinforcements. The introduction of BC, as with any other anisotropic nano-sized filler/reinforcement, into a polymer by extrusion unavoidably raises the

viscosity of the polymer melt. Moreover, the processing conditions must be controlled to prevent the very hydrophilic cellulose whiskers transporting water into the high-temperature processing zone, which will lead to the premature degradation of the polymer (especially in the case of PLA) and degradation of the whiskers themselves can occur at $>180^\circ\text{C}$.

So far the progress in (scalable) manufacturing of renewable nanocomposites has been limited, and the properties of cellulose nanofillers in the composite have still to be satisfactorily utilised; the blocks hindering progress are principally in achieving good distribution or percolation of the nanoreinforcement throughout the matrix. Nature uses hierarchical structures in plant cell walls, shells and bones when high mechanical properties are required. The application of such a concept is markedly improving the engineering of *truly green* composites [227]. In an attempt to distribute the anisotropic BC in a polymer matrix and to use conventional processing techniques Juntaro et al. [27, 29] and Pommet et al. [30] created hierarchical structures in natural fibre composites by cultivating cellulose-producing bacteria in the presence of natural fibres (Fig. 23), such as sisal and hemp, resulting in the coating of natural fibre surfaces by BC. It was found that the strong and highly crystalline BC fibrils preferentially attached, in fact coated, the natural fibres thereby creating "hairy fibres" (Fig. 24) leading to a nanostructured natural fibre surface. Simply weighing the fibres before and after the BC fermentation process confirmed that between 5 and 6 wt% of BC adhered to the fibres after the modification. The strength of attachment of the nanocellulose coating to the natural fibres can be attributed to strong hydrogen bonding between the hydroxyl groups present in BC and the (ligno)cellulose in natural fibres [228].

The modification process did not affect the mechanical properties of sisal fibres but it significantly reduced the mechanical properties of hemp fibres. The exposure of the hemp fibres to the bacterial culture caused a drastic loss of fibre strength ($286 \pm 31 \text{ MPa}$ for original hemp and $171 \pm 11 \text{ MPa}$ for the BC coated hemp) as well as

Fig. 23 **a** Sisal fibres in bacterial cellulose fermentation medium before bacterial cellulose culture and **b** 2 days after bacterial cellulose culture. Reproduction of images **a** and **b** from [30] with permission from the American Chemical Society (© American Chemical Society 2008)

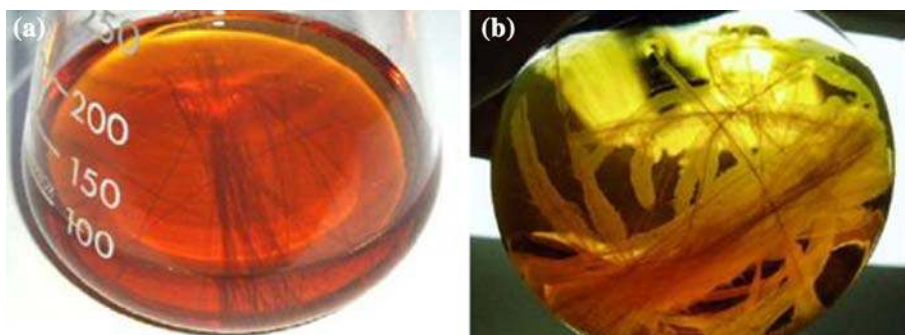
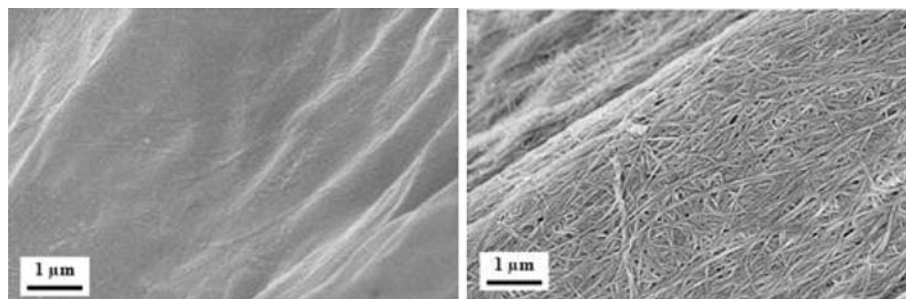


Fig. 24 Typical SEM micrographs of sisal fibre without bacterial cellulose (*left*) and with bacterial cellulose attached (*right*). Reproduction of images from [30] with permission from the American Chemical Society (© American Chemical Society 2008)



Young's modulus (Young's modulus decreased from 21.4 ± 2.0 to 8.8 ± 0.7 GPa for the original hemp and the BC coated hemp, respectively), which was due to a further separation (or brooming) of the hemp fibres in to smaller individual fibres as a result of the intrinsically non-cohesive structure of bast fibres.

The "hairy" characteristic of the BC coated sisal and hemp fibres helped to enhance the adhesion, as measured using single fibre pull-out tests [229], between natural fibres and cellulose acetate butyrate (CAB) and PLA. The apparent interfacial shear strength, as a practical measure of the interfacial adhesion, between sisal and CAB and PLA increased by 46 and 21%, respectively, while the apparent interfacial shear strength between hemp and CAB increased as much as 140% [27]. This increase in the apparent interfacial shear strength is likely to be due to enhanced mechanical interlocking [27] in addition to the increased surface free energy of the BC coated (sisal) fibres (from 38.4 mN m^{-1} for original sisal to 61.9 mN m^{-1} for BC coated sisal), leading to better wetting of the fibres by the matrix [28, 30].

These "hairy" fibres deliver the nanoreinforcement into polymer matrices and avoid troublesome processing issues, such as increased melt viscosity, self-filtration and therefore gradient formation of the nanofiller as well as aggregation, associated with anisotropic nanofillers [230]. Coating natural fibres with BC also facilitates good distribution of the nanofibres within the matrix in the areas where the nanoreinforcement is required, i.e. near the conventional reinforcing micrometre-sized fibres. The improved interfacial adhesion enhanced the stress transfer efficiency between the fibres and matrix and thus resulted in an improvement in the mechanical and thermal performances of composites. Model unidirectional natural fibre reinforced nanocomposites [29] and short fibre nanocomposites [231] were manufactured via compression moulding to investigate the impact of the BC coating on composite mechanical properties. Note that fibres of sisal grafted with BC show improved composite properties in both CAB and PLA matrices over the unmodified sisal fibres, while the mechanical properties of composites made with BC grafted hemp fibres remain the same as for composites containing unmodified hemp even though the hemp fibres have far worse mechanical properties. For the

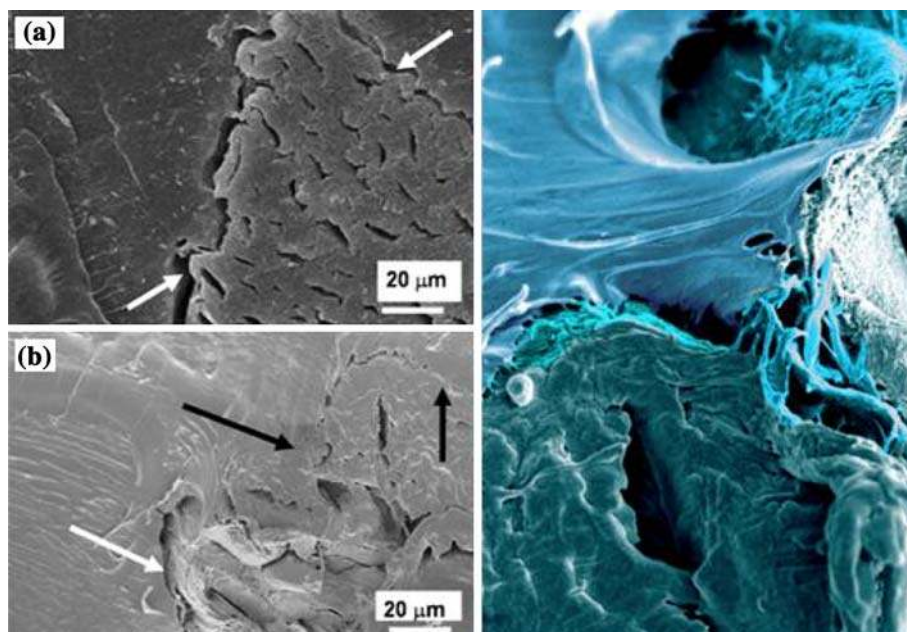
unidirectional sisal fibre reinforced composites, both the tensile properties parallel and perpendicular to the fibre alignment were found to increase significantly when containing fibres with BC coating. In the case of modified sisal reinforced PLA, the parallel strength and Young's modulus increased by 44 and 42%, while the off-axis strength and Young's modulus increased by 68 and 49% [29], respectively. The BC coating technique also manifested improvements in some short fibre composites. It was found that the BC modification led to an increase of the crystallinity of PLA-based composites, as well as the improvements in tensile and flexural properties of short sisal fibre-reinforced composites [231]. The presence of the nanofibrils improved the interfacial adhesion between the micrometre-sized reinforcing fibres and the polymer as confirmed by microscopy observations of the composite fracture surface (Fig. 25). The nanofibrils may also contribute to the direct reinforcement of the composites. The tensile and flexural properties of the short fibre composites were higher than commercial polypropylene compounds used in interior automotive part applications, indicating its potential in the automotive industry. Some short fibre composites also have comparable tensile and flexural properties to polypropylene reinforced with 20 wt% short glass fibre. Therefore, it can be concluded that hierarchical natural fibre composites (or natural fibre reinforced nanocomposites) are a very promising material to replace conventional plastics.

Nevertheless, there are many outstanding issues in hierarchically structuring composites which still need to be addressed; especially the compatibility between the lignocellulosic fibres, BC coating and the polymer matrices, the arrangement of the nanofibres within the composite, and the control of biodegradability of the final composite. Furthermore, the separation of end-of-life waste of *truly green* composites from the waste streams and compositing is another major issue requiring further research.

Novel materials based on cellulose nanofibres
(KTH, Stockholm, Sweden)

Lars Berglund and co-workers have been developing a number of novel materials based on cellulose nanofibres,

Fig. 25 SEM micrographs of interfacial failure between PLA and sisal fibre without bacterial cellulose (*left*) and with bacterial cellulose attached (*right*). Reproduction of images from [27] with permission from Wiley (© Wiley 2008)



namely, foams and aerogels, nanopaper and starch–nano-cellulose composites.

Polymer foams are of interest in many applications. Often, the mechanical performance is important, for instance in packaging materials for energy absorption and when used as core materials in sandwich structures for weight saving and insulation. Although fibre reinforced polymer foams are used, conventional reinforcing fibres have diameters at the typical scale of 10 μm . Since the typical cell wall thickness of polymer foams is a few micrometres, it means that microscale fibers are not suitable for cell wall reinforcement. However, it is possible to therefore use cellulose nanofibres as cell wall reinforcements. Svagan et al. [33] prepared biofoams based on amylopectin-rich potato starch and cellulose nanofibres from wood pulp. Water suspensions were prepared from dissolved starch mixed with well-dispersed cellulose nanofibres. The mixtures were frozen and the water was then removed by sublimation in the drying stage. The resulting biofoams were bioinspired in structure, since the cell walls contained a cellulose nanofibre network and a biopolymer matrix, as in plant cell walls. A typical field emission gun scanning electron microscope (FE-SEM) image of one of these foams is shown in Fig. 26, showing clearly the open walled structure. The cell wall compositions, with between 10 and 40 percent by weight of cellulose nanofibres, showed dramatic improvement in energy absorption during compressive loading. The absorbed energy was doubled as compared with the neat amylopectin reference, with 40 percent by weight of cellulose nanofibres. This novel material concept of cellulose nanocomposite biofoams is of interest in biomedical applications as

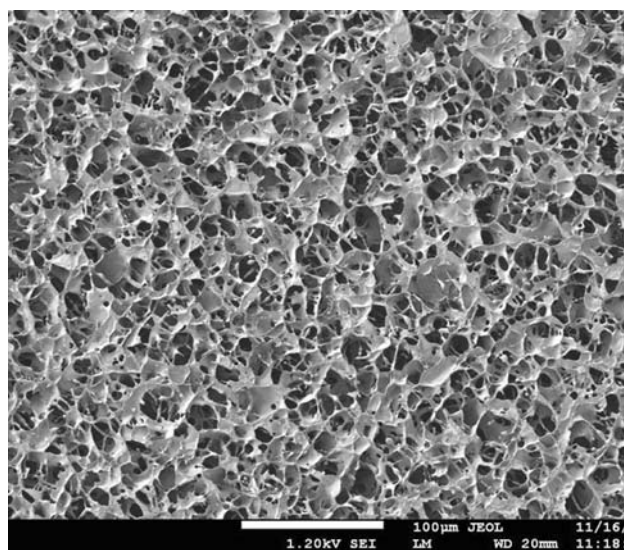


Fig. 26 FE-SEM micrograph of bioinspired starch-cellulose nanocomposite foam. The cellulose content is 40 wt%, and the cellulose nanofibres are reinforcing the cell walls of the foam. Image by Dr. A. Svagan, Wallenberg Wood Science Center, Royal Institute of Technology, Sweden

well as in packaging material applications (expanded polystyrene replacement) and sandwich foam cores.

Aerogels are a new class of materials of great interest, not only for catalysis applications but also in structures for liquid storage. They also have exceptional thermal insulation properties. In the study by Pääkkö et al. [232] in Prof. Ikkala's group at Helsinki University of Technology, mechanically robust aerogels were prepared by freeze-drying of cellulose nanofibre water suspensions. Ceramic

aerogels, as well as neat polymer aerogels, are brittle in character. However, thin native cellulose aerogels can be folded back and forth without fracture. Furthermore, native cellulose aerogels can also be functionalized by subsequent treatment, i.e. by coating with conducting polymers [232].

Cellulose nanofibril suspensions can also be converted to nanopaper structures. In the study by Henriksson et al. [233], the remarkable potential of such nanopaper was demonstrated. A typical AFM image of the structure of this nanopaper is shown in Fig. 27. Exceptional mechanical performance was observed for the resultant nanopaper by selecting high molar mass cellulose, using nanofibrils with a surface charge, and by the use of a preparation procedure further favoring good dispersion. In particular, the work-to-fracture was very high due to a strain-to-failure approaching 10%, with a strength of more than 220 MPa in uniaxial tensile experiments on large specimens. The yield stress is just above 100 MPa, followed by a region of linear strain-hardening until fracture. In the strain-hardening region, nanofibrils must be slipping and bending in order to explain the large strain-to-failure. Young's modulus, as measured by loading-unloading experiments, also actually increased in the strain-hardening region.

The ability of cellulose nanopaper to maintain its integrity at high strains is demonstrated in the study by

Svagan et al. [33]. The polymer matrix was highly glycerol-plasticized amylopectin (50/50 composition). Such a matrix has almost viscous characteristics at room temperature, and still the nanocomposite with 60 wt% cellulose can have a tensile strength approaching 140 MPa, a Young's modulus of 6 GPa and a strain-to-failure exceeding 6%. If the moisture diffusion characteristics of starch are considered, addition of cellulose nanofibrils leads to remarkable improvements [234]. One important reason is the constraining effect of the cellulose nanopaper network on starch expansion due to moisture adsorption.

All-cellulose nanocomposites (Queen Mary, London, UK)

Alternative routes to environmentally friendly polymer composites have recently also focussed on approaches following mono-material-based eco-design concepts; so-called "all-polymer composites" or "self-reinforced polymer composites". For example, fully recyclable all-polypropylene (all-PP) or self-reinforced polypropylene (SR-PP) composites have been proposed to replace traditional glass fibre reinforced plastics for a number of applications, notably the automotive industry [235–241]. Following the success of these all-PP composites, all-cellulose composites have recently been introduced. In a similar fashion to all-polymer composites two different types of approaches can be followed for the creation of such self-reinforced cellulose composites: (i) conventional impregnation methods of cellulose matrix into cellulose fibres and (ii) novel selective dissolution methods where the cellulose fibre skins are partially dissolved to form a matrix phase that bonds fibres together.

The impregnation method has been used to create all-cellulose composites based on ligno-cellulose fibres such as ramie [242, 243], rice husk [244], BC [245] and cellulose nanowhiskers [51]. Nishino and co-workers [242, 243] created all-cellulose composites in which both the fibres and matrix are cellulose, by distinguishing the solubility of the matrix cellulose into the solvent from that of the fibres through a pre-treatment of the fibres. Natural cellulose can be dissolved into *N,N*-dimethyl acetamide (DMAc) containing LiCl through the coordination of Li ions to the hydroxyl groups of cellulose. However, pre-treatment is needed for dissolution.

Various studies have reported the manufacture of all-cellulose composites using partial dissolution of cellulose fibres. During composite preparation, rather than selectively melting fibre surfaces as in the case of thermoplastic all-PP composites [235, 236, 246–249], here the surface layer of cellulose fibres is partially dissolved to form the matrix phase of the all-cellulose composites. Meanwhile, the remaining cellulose fibre cores maintain their original



Fig. 27 AFM micrograph of cellulose nanopaper surface. The cellulose nanofibers are disintegrated from dissolving wood pulp of 95 wt% cellulose content, using an enzymatic pretreatment procedure. Image by Prof. I. Mondragon, University of Basque Country, San Sebastian, Spain

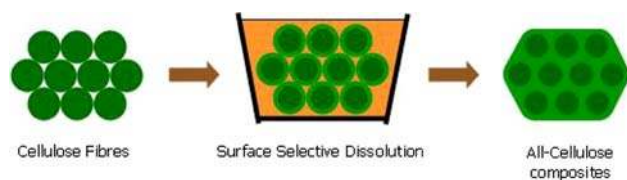


Fig. 28 Schematic model of fibre and composite cross-section for the preparation of all-cellulose composite with partially dissolved fibres [263]. Reproduction of image from [263] with permission from Elsevier (© Elsevier 2008)

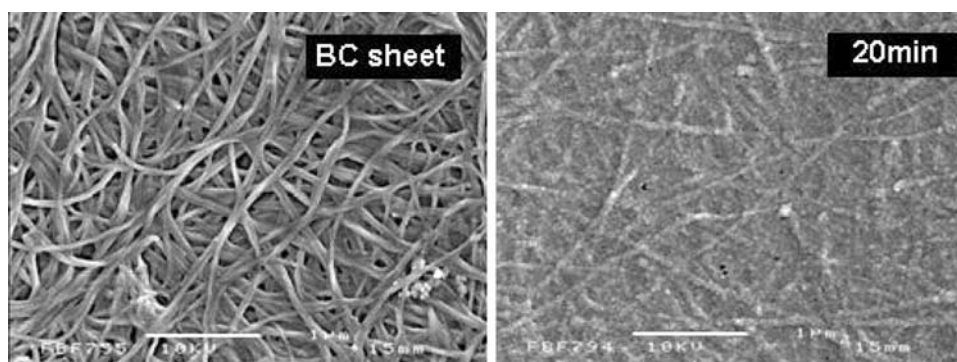
structure and impart a reinforcing effect to the composite (Fig. 28). This method constitutes not only a simplification of the composite's preparation, but also provides a significantly improved fibre/matrix interface. The surface selective dissolution method results not only in very high fibre volume fractions but also in a gradual change in properties of the fibre, forming an interphase or interfacial region which minimises voids and stress concentrations as in sharp, well-defined fibre/matrix interfaces.

The concept of all-cellulose composites has been explored for a wide range of cellulose materials including wood pulp fibres [250, 251], filter and Kraft paper [252–255], MCC [256–260], sisal [261, 262], ramie [263], regenerated cellulose (Lyocell) and cellulose fibres spun from an anisotropic phosphoric acid solution (Bocell) [264], and BC [265]. These studies showed great promise. For example, in the case of plant cellulose fibres (ramie) exceptionally high properties were obtained using LiCl/DMAc as a solvent. Unidirectional composites with Young's modulus of around 30 GPa and tensile strengths of 550 MPa [242, 243] were created (compared to a pure fibre strength of 700 MPa). As such, these composites sometimes out-performed those of traditional natural fibre composites by a factor of two and are among the highest ever reported for a natural fibre-reinforced composite [266–273]. In fact, as the process relies on selective dissolution of the outer fibre skins, the process works extremely well with natural cellulose, where the outer layers of the fibres, which are dissolved, mainly consist of disordered cellulose, while the

core, which remains, consists of highly oriented cellulose [274, 275].

All-cellulose nanocomposites based on MCC [256–260] and BC [265] have also been prepared by these methods. Figure 29 shows the microstructure of a BC sheet and a BC composite sheet prepared by Soykeabkaew et al. [265] using the selective dissolution method. In the case of BC, optimum processing conditions using LiCl/DMAc as a solvent allowed for the preparation of nanocomposites with tensile strengths of 410 MPa and Young's moduli of 18 GPa. Depending on the processing time, the sheets showed also remarkable high toughness characteristic possessing a work-of-fracture as high as 16 MJ m^{-3} . Interestingly, compared to the all-cellulose nanocomposites prepared by partial dissolution of MCC powder of Gindl and Keckes [256] and the nanopaper prepared from cellulose nanofibrils by Henriksson et al. [233], BC nanocomposites exhibit nearly twice the tensile strength, while similar high values of work-to-fracture can be obtained. Figure 30 shows the stress–strain curves of these BC nanocomposites, where with increasing immersion time, after an initial small increase in strength, an obvious reduction in the composites' tensile properties is apparent. In light of these results it is interesting to compare these data for nano-size cellulose fibres with all-cellulose composites based on micron-sized cellulose fibres. Nishino and Arimoto [252] developed an isotropic all-cellulose composite using filter paper as a cellulose source. Unlike BC nanocomposites, these all-cellulose microcomposites showed a strong improvement in tensile strength with immersion time (almost five-fold increase in strength from 50 to 240 MPa, Fig. 30b). In comparison to BC, filter paper consists of a loosely formed, much weaker, micro-size cellulose fibre network with the appearance of larger voids and less hydrogen bonded fibre–fibre interactions. After the surface selective dissolution process, these voids are filled with cellulose matrix leading to a stronger interface and better stress transfer capability and as a result a marked increase in strength of the all-cellulose composite sheet. Again the mechanical properties of these all-cellulose composites are

Fig. 29 Scanning electron micrographs of the sheet surface of bacterial cellulose (BC) (left) and all-cellulose nanocomposites prepared with BC at an immersion time in LiCl/DMAc of 20 min (right). The length of the scale bar is $1 \mu\text{m}$ [265]. Reproduction of images from [265] with permission from Springer (© Springer 2009)



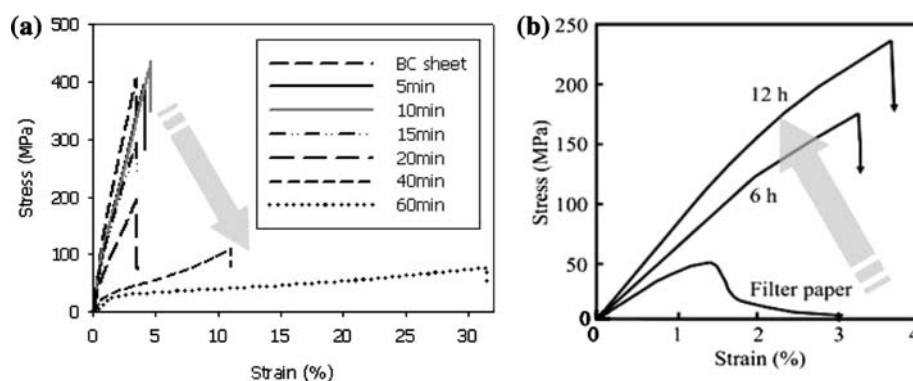


Fig. 30 Stress–strain curves of **a** bacterial cellulose (BC) sheet and all-cellulose composites prepared with nano-size bacterial cellulose at various immersion times [265] and **b** all-cellulose composites prepared with micro-size cellulose fibres of filter paper [252].

Reproduction of image **a** from [265] with permission from Springer (© Springer 2009) and **b** from [252] with permission from the American Chemical Society (© American Chemical Society 2007)

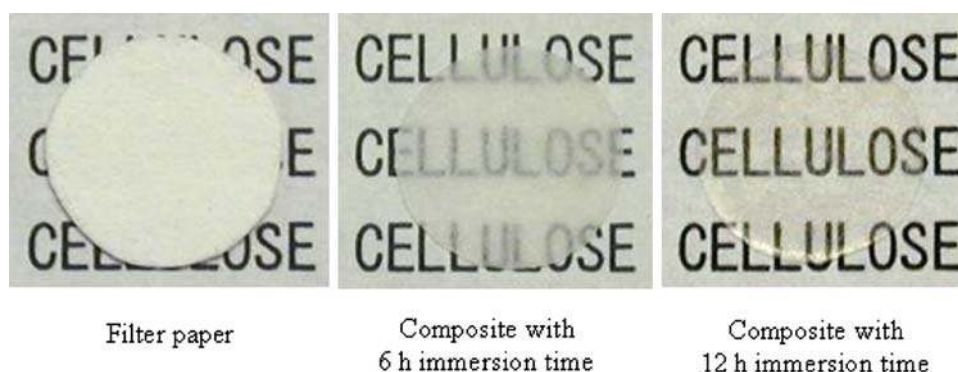


Fig. 31 Pictures of all-cellulose composites manufactured by selective dissolution of cellulose filter paper. The improvement in the composite's interface with increasing immersion time is evident through the observed improvement in optical transparency with

immersion time for these all-cellulose composites [252]. Reproduction of images from [252] with permission from the American Chemical Society (© American Chemical Society 2007)

far superior compared to traditional isotropic natural fibre mat composites based on flax/PP with typical tensile strengths of 50 MPa [266, 276]. The improvement in the composite's interface with increasing immersion time was also evident through the observed improvement in optical transparency with immersion time [252] (Fig. 31).

BC, on the other hand, has already a very strong network structure [21, 226, 277] based on high-modulus nano-size cellulose ribbons [23], which allows them to form more extensive hydrogen bonding (Fig. 32) [265, 278]. In the case of BC nanocomposites, only a slight enhancement in the network structure caused by the improved bonding from the newly created matrix is obtained. BC sheets have already a high initial level of inter-fibre bonding through extensive hydrogen bonding of the continuous nano-ribbons and no significant further improvements are observed with further dissolution times. These results are a further indication of the very strong initial hydrogen bonded

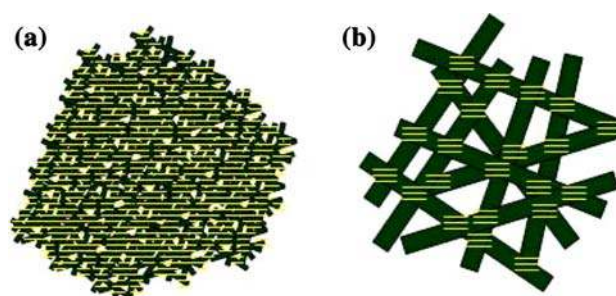


Fig. 32 Schematic illustration of extensive hydrogen bonding in **a** bacterial cellulose (nano-size network) compared to **b** cellulose paper (micro-size network) [265]. Reproduction of image from [265] with permission from Springer (© Springer 2009)

network that can be created by nano-size cellulose fibres such as in BC, which do not require further strengthening through a cellulose matrix.

Discussion and conclusions

It has been shown that cellulose nanofibres have an exciting potential as reinforcements in nanocomposites. They also, due to their size and the ability to chemically modify their surface, have great potential for a wide variety of applications; foams, adhesives, hierarchical materials and electronic display materials. A number of methods have been reviewed that enable cellulose nanofibres to be extracted from either plants or animal sources. It has to be remembered that in order to do this, some disruption of structure may occur, and so efforts to reduce damage during extraction are of paramount importance. It is also worth noting that mechanical means of fibre separation do require large amounts of energy, and so efforts to reduce this, either by enzymatic or chemical methods, will become increasingly important. The potential mechanical properties of cellulose nanofibres compete well with other engineering materials, and we have seen that this could be useful in high-end technological applications. We have seen how dispersion is also a critical step in the production of cellulose nanocomposites. Layer-by-layer deposition offers a facile route to overcoming this, with remarkable percolation of whiskers interacting with each other, and with the surrounding matrix, in a way that greatly enhances the mechanical properties of the resultant material. Cellulose nanowhiskers have a high surface area to volume ratio. This means that the surface plays a dominant role in not only the mechanical efficiency of stress transfer in a nanocomposite, but also the ability to modify the surface chemistry. We have seen that this can be used to “switch-off” the nanowhiskey–nanowhiskey interaction via a disruption of hydrogen bonding, which may also facilitate nanocomposite production. The high surface area can also be used as a template for polymerisation, which opens up the ability to make a highly reactive surface for a wide range of applications. By grafting DNA to the surface of cellulose nanowhiskers it should also be possible then to utilise self-assembly methods to generate new forms of composite biomaterials. The chemical coupling of chromophores to the surface of nanowhiskers has provided a route for following dispersion of cellulose nanowhiskers in nanocomposite materials, and TEMPO oxidation a means for isolating nanofibres. In addition to this, techniques such as Raman spectroscopy may provide a route for analysing, in a quantitative sense, the stress-transfer efficiency of cellulose nanofibres and polymeric resins, but also whisker–whisker interactions.

Other forms of cellulose nanofibres, such as BC, have been shown to be useful for generating hierarchical composites. This approach offers a way for long micrometre-sized fibres to be more effectively used in composites by enhancing coupling between the fibre surface and the

surrounding resin. BC nanofibres have also been shown to be useful for generating optically transparent and flexible composite films with low thermal expansion coefficients. It has also been shown that by combining these high stiffness fibrils with a cellulose matrix, excellent mechanical properties can be obtained for what are now termed “all-cellulose” nanocomposites. Nanofibrous networks of cellulose, produced by mechanical means, can, through careful extraction, also be used for this application. The fibrils generated appear to replicate structures seen in the native primary wall of plant cells. In the form of nanopaper, the material has high toughness and can be combined effectively as a filler for foams. Incorporated with other polysaccharides, such as starch, there is a promising future for new light weight yet mechanically stable materials.

Acknowledgements Some of the authors wish to thank the following for allowing them to carry out their research. The EPSRC and the Malaysian government for financial support (S.J.E.). Financial support from DuPont (Young Professor Award to C.W.), the L. Stokes Cleveland VAMC Advanced Platform Technology Center (J.R.C.), an Ohio Innovation Incentive Fellowship (C.W., S.J.R., J.R.C.), the Department of Veteran’s Affairs Associate Investigator Career Development Program (J.R.C.), and the National Institute of Health through Grant R21NS053798-01 (C.W., S.J.R., J.R.C.) is gratefully acknowledged. M.I.A. thanks the financial support of the Guggenheim Foundation. M.I.A. and N.E.M. also acknowledge the financial support from CONICET (National Research Council from Argentina) and ANPCyT (National Agency for the Promotion of Science and Technology, Argentina). M.I.A. and N.E.M. thank the collaboration of Prof. M.L. Auad (Auburn University, USA). T.P. would like to thank Prof. T. Nishino (Kobe University, Japan) for his collaboration on all-cellulose composites. A.B. wishes to thank the EPSRC for funding the research through a Challenging Engineering grant.

References

1. Klemm D, Heublein B, Fink HP, Bohn A (2005) *Angew Chem Int Ed* 44:3358
2. Favier V, Chanzy H, Cavaille JY (1995) *Macromolecules* 28:6365
3. Khadem HS (1988) *Carbohydrate chemistry: monosaccharides and their oligomers*. Academic Press Ltd., New York
4. Klemm D, Philipp B, Heinze T, Heinze U, Wagenknecht W (1998) *Comprehensive cellulose chemistry*. Wiley VCH, Chichester
5. Atalla RH, Vanderhart DL (1984) *Science* 223:283
6. Nishiyama Y, Langan P, Chanzy H (2002) *J Am Chem Soc* 124:9074
7. Nishiyama Y, Sugiyama J, Chanzy H, Langan P (2003) *J Am Chem Soc* 125:14300
8. Kroonbatenburg LMJ, Kroon J, Northolt MG (1986) *Polym Commun* 27:290
9. Meyer KH, Lotmar W (1936) *Helv Chim Acta* 19:68
10. Sakurada I, Nukushina Y, Ito T (1962) *J Polym Sci* 57:651
11. Nishino T, Takano K, Nakamae K (1995) *J Polym Sci B* 33:1647
12. Lyons WJ (1959) *J Appl Phys* 30:796
13. Treloar LRG (1960) *Polymer* 1:290

14. Matsuo M, Sawatari C, Iwai Y, Ozaki F (1990) *Macromolecules* 23:3266
15. Tashiro K, Kobayashi M (1991) *Polymer* 32:1516
16. Marhofer RJ, Reiling S, Brickmann J (1996) *Ber Bunsen-Ges Phys Chem Chem Phys* 100:1350
17. Sturcova A, Davies GR, Eichhorn SJ (2005) *Biomacromolecules* 6:1055
18. Eichhorn SJ, Davies GR (2006) *Cellulose* 13:291
19. Diddens I, Murphy B, Krisch M, Muller M (2008) *Macromolecules* 41:9755
20. Kong K, Wilding MA, Ibbett RN, Eichhorn SJ (2008) *Faraday Discuss* 139:283
21. Iguchi M, Yamanaka S, Budhiono A (2000) *J Mater Sci* 35:261. doi:[10.1023/A:1004775229149](https://doi.org/10.1023/A:1004775229149)
22. Guhados G, Wan WK, Hutter JL (2005) *Langmuir* 21:6642
23. Hsieh Y-C, Yano H, Nogi M, Eichhorn SJ (2008) *Cellulose* 15:507
24. Bicerano J, Brewbaker JL (1995) *J Chem Soc Faraday Trans* 91:2507
25. Tajima K, Fujiwara M, Takai M, Hayashi J (1995) *Mokuzai Gakkaishi* 41:749
26. Yano H, Sugiyama J, Nakagaito AN, Nogi M, Matsuura T, Hikita M, Handa K (2005) *Adv Mater* 17:153
27. Juntaro J, Pommet M, Kalinka G, Mantalaris A, Shaffer MSP, Bismarck A (2008) *Adv Mater* 20:3122
28. Heng JYY, Pearse DF, Thielmann F, Lampke T, Bismarck A (2007) *Compos Interfaces* 14:581
29. Juntaro J, Pommet M, Mantalaris A, Shaffer M, Bismarck A (2007) *Compos Interfaces* 14:753
30. Pommet M, Juntaro J, Heng JYY, Mantalaris A, Lee AF, Wilson K, Kalinka G, Shaffer MSP, Bismarck A (2008) *Biomacromolecules* 9:1643
31. Turbak AF, Snyder FW, Sandberg KR (1983) *J Appl Polym Sci Appl Polym Symp* 37:815
32. Nakagaito AN, Yano H (2005) *Appl Phys A* 80:155
33. Svagan AJ, Samir M, Berglund LA (2007) *Biomacromolecules* 8:2556
34. Johnson RK, Zink-Sharp A, Renneckar SH, Glasser WG (2009) *Cellulose* 16:227
35. Ranby BG, Noe RW (1961) *J Polym Sci* 51:337
36. Revol JF, Bradford H, Giasson J, Marchessault RH, Gray DG (1992) *Int J Biol Macromol* 14:170
37. Ranby BG (1952) *Arkiv for Kemi* 4:241
38. Rusli R, Eichhorn SJ (2008) *Appl Phys Lett* 93:033111
39. Hull D, Clyne TW (1996) *An introduction to composite materials*. Cambridge University Press, Cambridge
40. Halpin JC, Kardos JL (1976) *Polym Eng Sci* 16:344
41. Van Es M (2001) *Polymer-clay nanocomposites—the importance of particle dimensions*, PhD thesis, TU Delft
42. Davies GC, Bruce DM (1998) *Text Res J* 68:623
43. Samir M, Alloin F, Dufresne A (2005) *Biomacromolecules* 6:612
44. Kamel S (2007) *Express Polym Lett* 1:546
45. Kvien I, Tanem BS, Oksman K (2005) *Biomacromolecules* 6:3160
46. Angles MN, Dufresne A (2000) *Macromolecules* 33:8344
47. Fleming K, Gray D, Prasanna S, Matthews S (2000) *J Am Chem Soc* 122:5224
48. Habibi Y, Goffin AL, Schiltz N, Duquesne E, Dubois P, Dufresne A (2008) *J Mater Chem* 18:5002
49. Siqueira G, Bras J, Dufresne A (2009) *Biomacromolecules* 10:425
50. Helbert W, Cavaille JY, Dufresne A (1996) *Polym Compos* 17:604
51. Grunert M, Winter WT (2002) *J Polym Environ* 10:27
52. Samir M, Alloin F, Paillet M, Dufresne A (2004) *Macromolecules* 37:4313
53. Henriksson M, Henriksson G, Berglund LA, Lindstrom T (2007) *Eur Polym J* 43:3434
54. Mathew AP, Dufresne A (2002) *Biomacromolecules* 3:609
55. Orts WJ, Shey J, Imam SH, Glenn GM, Guttman ME, Revol JF (2005) *J Polym Environ* 13:301
56. Kvien I, Sugiyama J, Votrubec M, Oksman K (2007) *J Mater Sci* 42:8163. doi:[10.1007/s10853-007-1699-2](https://doi.org/10.1007/s10853-007-1699-2)
57. Samir M, Alloin F, Sanchez JY, Dufresne A (2004) *Polymer* 45:4149
58. Samir M, Alloin F, Gorecki W, Sanchez JY, Dufresne A (2004) *J Phys Chem B* 108:10845
59. Samir M, Mateos AM, Alloin F, Sanchez JY, Dufresne A (2004) *Electrochim Acta* 49:4667
60. Samir M, Chazeau L, Alloin F, Cavaille JY, Dufresne A, Sanchez JY (2005) *Electrochim Acta* 50:3897
61. Samir M, Alloin F, Dufresne A (2006) *Compos Interfaces* 13:545
62. Zimmermann T, Pohler E, Geiger T (2004) *Adv Eng Mater* 6:754
63. Zimmermann T, Pohler E, Schwaller P (2005) *Adv Eng Mater* 7:1156
64. Choi YJ, Simonsen J (2006) *J Nanosci Nanotechnol* 6:633
65. Favier V, Canova GR, Cavaille JY, Chanzy H, Dufresne A, Gauthier C (1995) *Polym Adv Technol* 6:351
66. Dufresne A, Cavaille JY, Helbert W (1997) *Polym Compos* 18:198
67. Dubief D, Samain E, Dufresne A (1999) *Macromolecules* 32:5765
68. Dufresne A, Kellerhals MB, Witholt B (1999) *Macromolecules* 32:7396
69. Dufresne A (2000) *Compos Interfaces* 7:53
70. Chazeau L, Cavaille JY, Canova G, Dendievel R, Boutherein B (1999) *J Appl Polym Sci* 71:1797
71. Chazeau L, Cavaille JY, Terech P (1999) *Polymer* 40:5333
72. Chazeau L, Paillet M, Cavaille JY (1999) *J Polym Sci B* 37:2151
73. Chazeau L, Cavaille JY, Perez J (2000) *J Polym Sci B* 38:383
74. Ruiz MM, Cavaille JY, Dufresne A, Graillat C, Gerard JF (1999) *Eurofillers '99 conference*. Wiley-VCH Verlag GmbH, Lyon, France, p 211
75. de Rodriguez NLG, Thielemans W, Dufresne A (2006) *Cellulose* 13:261
76. Heux L, Chauve G, Bonini C (2000) *Langmuir* 16:8210
77. Gousse C, Chanzy H, Excoffier G, Soubeyrand L, Fleury E (2002) *Polymer* 43:2645
78. Nair KG, Dufresne A, Gandini A, Belgacem MN (2003) *Biomacromolecules* 4:1835
79. Angellier H, Molina-Boisseau S, Belgacem MN, Dufresne A (2005) *Langmuir* 21:2425
80. Labet M, Thielemans W, Dufresne A (2007) *Biomacromolecules* 8:2916
81. Habibi Y, Dufresne A (2008) *Biomacromolecules* 9:1974
82. Yi J, Xu QX, Zhang XF, Zhang HL (2008) *Polymer* 49:4406
83. Morandi G, Heath L, Thielemans W (2009) *Langmuir* 25: 8280
84. Lönnberg H, Fogelström L, Berglund L, Malmström E, Hult A (2008) *Eur Polym J* 44:2991
85. Samir M, Alloin F, Sanchez JY, El Kissi N, Dufresne A (2004) *Macromolecules* 37:1386
86. Marcovich NE, Auad ML, Bellesi NE, Nutt SR, Aranguren MI (2006) *J Mater Res* 21:870
87. van den Berg O, Capadona JR, Weder C (2007) *Biomacromolecules* 8:1353
88. Nakagaito AN, Yano H (2004) *Appl Phys A* 78:547
89. Nakagaito AN, Yano H (2008) *Cellulose* 15:555

90. Shimazaki Y, Miyazaki Y, Takezawa Y, Nogi M, Abe K, Ifuku S, Yano H (2007) *Biomacromolecules* 8:2976
91. Nogi M, Handa K, Nakagaito AN, Yano H (2005) *Appl Phys Lett* 87:3
92. Iwamoto S, Abe K, Yano H (2008) *Biomacromolecules* 9:1022
93. Henriksson M, Berglund LA (2007) *J Appl Polym Sci* 106:2817
94. Oksman K, Mathew AP, Bondeson D, Kvien I (2006) *Compos Sci Technol* 66:2776
95. Bondeson D, Oksman K (2007) *Compos A* 38:2486
96. Dong XM, Revol JF, Gray DG (1998) *Cellulose* 5:19
97. Ebeling T, Paillet M, Borsali R, Diat O, Dufresne A, Cavaille JY, Chanzy H (1999) *Langmuir* 15:6123
98. Dufresne A, Dupeyre D, Vignon MR (2000) *J Appl Polym Sci* 76:2080
99. Favier V, Canova GR, Shrivastava SC, Cavaille JY (1997) *Polym Eng Sci* 37:1732
100. Hajji P, Cavaille JY, Favier V, Gauthier C, Vigier G (1996) *Polym Compos* 17:612
101. Dufresne A, Vignon MR (1998) *Macromolecules* 31:2693
102. Wu QJ, Henriksson M, Liu X, Berglund LA (2007) *Biomacromolecules* 8:3687
103. Li FK, Zhang X, Hou JN, Xu M, Lu XL, Ma DZ, Kim BK (1997) *J Appl Polym Sci* 64:1511
104. Auad ML, Richardson T, Mosiewicki MA, Marcovich NE, Aranguren MI (2008) Reinforcement of segmented polyurethanes with cellulose crystals. In: XI Simposio Latinoamericano y IX Congreso Iberoamericano de Polimeros, Slap 2008, Peru
105. Auad ML, Contos VS, Nutt S, Aranguren MI, Marcovich NE (2008) *Polym Int* 57:651
106. Mitra VK, Risen WM, Baughman RH (1977) *J Chem Phys* 66:2731
107. Galiotis C, Robinson IM, Young RJ, Smith BJE, Batchelder DN (1985) *Polym Commun* 26:354
108. Galiotis C, Young RJ, Yeung PHJ, Batchelder DN (1984) *J Mater Sci* 19:3640. doi:[10.1007/BF00552276](https://doi.org/10.1007/BF00552276)
109. Young RJ, Eichhorn SJ (2007) *Polymer* 48:2
110. Hamad WY, Eichhorn S (1997) *J Eng Mater Technol Trans ASME* 119:309
111. Eichhorn SJ, Hughes M, Snell R, Mott L (2000) *J Mater Sci Lett* 19:721
112. Eichhorn SJ, Sirichaisit J, Young RJ (2001) *J Mater Sci* 36:3129. doi:[10.1023/A:1017969916020](https://doi.org/10.1023/A:1017969916020)
113. Eichhorn SJ, Young RJ (2003) *Compos Sci Technol* 63:1225
114. Eichhorn SJ, Young RJ (2004) *Compos Sci Technol* 64:767
115. Tze WTY, Gardner DJ, Tripp CP, O'Neill SC (2006) *J Adhesion Sci Technol* 20:1649
116. Tze WTY, O'Neill SC, Tripp CP, Gardner DJ, Shaler SM (2007) *Wood Fiber Sci* 39:184
117. Gierlinger N, Schwanninger M, Reinecke A, Burgert I (2006) *Biomacromolecules* 7:2077
118. Peetla P, Schenzel KC, Diepenbrock W (2006) *Appl Spectrosc* 60:682
119. Wiley JH, Atalla RH (1987) *Carbohydr Res* 160:113
120. Edwards HGM, Farwell DW, Webster D (1997) *Spectrochim Acta A* 53:2383
121. Krenchel H (1964) *Fibre reinforcement*. Academisk Forlag, Copenhagen
122. Iwamoto S, Kai W, Isogai A, Iwata T (2009) *Biomacromolecules* 10:2571
123. Lima MMD, Borsali R (2004) *Macromol Rapid Commun* 25:771
124. Schroers M, Kokil A, Weder C (2004) *J Appl Polym Sci* 93:2883
125. Ljungberg N, Bonini C, Bortolussi F, Boisson C, Heux L, Cavaille JY (2005) *Biomacromolecules* 6:2732
126. Bonini C, Heux L, Cavaille JY, Lindner P, Dewhurst C, Terech P (2002) *Langmuir* 18:3311
127. Araki J, Wada M, Kuga S (2001) *Langmuir* 17:21
128. Yuan HH, Nishiyama Y, Wada M, Kuga S (2006) *Biomacromolecules* 7:696
129. Marchessault RH, Morehead FF, Walter NM (1959) *Nature* 184:632
130. Turbak A, Snyder F, Sandberg K (1983) *Suspensions containing microfibrillated cellulose*, edited by U.P. Office, USA
131. Viet D, Beck-Candanedo S, Gray DG (2007) *Cellulose* 14:109
132. Araki J, Wada M, Kuga S, Okano T (1998) *Colloid Surf A* 142:75
133. Araki J, Wada M, Kuga S, Okano T (2000) *Langmuir* 16:2413
134. van den Berg O, Schroeter M, Capadona JR, Weder C (2007) *J Mater Chem* 17:2746
135. Capadona JR, Van Den Berg O, Capadona LA, Schroeter M, Rowan SJ, Tyler DJ, Weder C (2007) *Nat Nanotechnol* 2:765
136. Takayanagi M, Minami S, Uemura S (1964) *J Polym Sci C* 113
137. Ouali N, Cavaille JY, Perez J (1990) 3rd European symposium on polymer blends, Cambridge, UK, p 55
138. Capadona JR, Shanmuganathan K, Triftschuh S, Seidel S, Rowan SJ, Weder C (2009) *Biomacromolecules* 10:712
139. Capadona JR, Shanmuganathan K, Tyler DJ, Rowan SJ, Weder C (2008) *Science* 319:1370
140. Trotter JA, Tipper J, Lyons-Levy G, Chino K, Heuer AH, Liu Z, Mrksich M, Hodneland C, Dillmore WS, Koob TJ, Koob-Emunds MM, Kadler K, Holmes D (2000) *Colloquium on biotechnology of extracellular matrix*. Portland Press, Leeds, p 357
141. Trotter JA, Lyons-Levy G, Chino K, Koob TJ, Keene DR, Atkinson MAL (1999) *Matrix Biol* 18:569
142. Szulgit GK, Shadwick RE (2000) *J Exp Biol* 203:1539
143. Alberts B, Bray D, Lewis J, Raff M, Roberts K, Watson JD (1994) *Molecular biology of the cell*. Garland Publishing Inc., New York
144. Bellamkonda RV (2008) *Nat Mater* 7:347
145. Craig SL (2008) *Angew Chem Int Ed* 47:8776
146. Lonnberg H, Zhou Q, Brumer H, Teeri TT, Malmstrom E, Hult A (2006) *Biomacromolecules* 7:2178
147. Lindqvist J, Nystrom D, Ostmark E, Antoni P, Carlmark A, Johansson M, Hult A, Malmstrom E (2008) *Biomacromolecules* 9:2139
148. Westlund R, Carlmark A, Hult A, Malmstrom E, Saez IM (2007) *Soft Matter* 3:866
149. Lindqvist J, Malmstrom E (2006) *J Appl Polym Sci* 100:4155
150. Plackett D, Jankova K, Egsgaard H, Hvilsted S (2005) *Biomacromolecules* 6:2474
151. Singh N, Chen Z, Tomer N, Wickramasinghe SR, Soice N, Husson SM (2008) *J Membr Sci* 311:225
152. Roy D, Guthrie JT, Perrier S (2005) *Macromolecules* 38:10363
153. Roy D, Knapp JS, Guthrie JT, Perrier S (2008) *Biomacromolecules* 9:91
154. Barsbay M, Guven O, Davis TP, Barner-Kowollik C, Barner L (2009) *Polymer* 50:973
155. Harrison S, Malmstrom E, Hult A, Hawker CJ, Wooley KL (2004) 228th national meeting of the American Chemical Society. American Chemical Society, Philadelphia, PA, p 578
156. Zoppe J, Habibi Y, Rojas OJ (2008) Abstracts of papers, 235th ACS national meeting, New Orleans, LA, April 6–10, 2008, CELL
157. Morandi G, Thielemans W (2008) Abstracts of papers, 236th ACS national meeting, Philadelphia, PA, August 17–21, 2008, POLY
158. Labet M, Thielemans W (2009) 13th international IUPAC conference on polymers & organic chemistry, IUPAC, Montreal, Canada, 2009

159. Morandi G, Thielemans W (2009) 13th international IUPAC conference on polymers & organic chemistry, Montreal, Canada, 2009
160. Xu QX, Yi J, Zhang XF, Zhang HL (2008) *Eur Polym J* 44:2830
161. Dong S, Roman M (2007) *J Am Chem Soc* 129:13810
162. Aloisi GG, Costantino U, Latterini L, Nocchetti M, Camino G, Frache A (2006) *J Phys Chem Solids* 67:909
163. Langat J, Bellayer S, Hudrlik P, Hudrlik A, Maupin PH, Gilman JW, Raghavan D (2006) *Polymer* 47:6698
164. Beck-Candanedo S, Roman M, Gray DG (2005) *Biomacromolecules* 6:1048
165. Elazzouzi-Hafraoui S, Nishiyama Y, Putaux J-L, Heux L, Dubreuil F, Rochas C (2008) *Biomacromolecules* 9:57
166. Herrick FW, Casebier RL, Hamilton JK, Sandberg KR (1983) *J Appl Polym Sci Appl Polym Symp* 37:797
167. Turbak AF, Snyder FW, Sandberg KR (1983) *J Appl Polym Sci Appl Polym Symp* 37:815
168. Paakko M, Ankerfors M, Kosonen H, Nykanen A, Ahola S, Osterberg M, Ruokolainen J, Laine J, Larsson PT, Ikkala O, Lindstrom T (2007) *Biomacromolecules* 8:1934
169. Wagberg L, Decher G, Norgren M, Lindstrom T, Ankerfors M, Axnas K (2008) *Langmuir* 24:784
170. Saito T, Kimura S, Nishiyama Y, Isogai A (2007) *Biomacromolecules* 8:2485
171. Saito T, Isogai A (2006) *Colloid Surf A* 289:219
172. Saito T, Isogai A (2004) *Cellulose Commun* 11:192
173. Saito T, Nishiyama Y, Putaux J-L, Vignon M, Isogai A (2006) *Biomacromolecules* 7:1687
174. Johnson RK, Zink-Sharp A, Renneckar SH, Glasser WG (2009) *Cellulose (Dordrecht, Netherlands)* 16:227
175. Li Q, Renneckar S (2009) *Cellulose (in press)*
176. Dunky M, Pizzi T, Van Leemput M (2002) State of the art, Report, COST action E13, Wood adhesion and glued products
177. Bishopp JA (1991) Annual conference on adhesion and adhesives. Butterworth-Heinemann Ltd., London, p 178
178. Guthrie J (2005) In: Packham DE (ed) *Handbook of adhesion*. Wiley, Chichester, p 638
179. Hunston DL, Bitner JL, Rushford JL, Oroshnik J, Rose WS (1980) *J Elastomer Plast* 12:133
180. Kinloch AJ (2003) *MRS Bull* 28:445
181. Kinloch AJ, Lee JH, Taylor AC, Sprenger S, Eger C, Egan D (2003) *J Adhesion* 79:867
182. Soares BG, Gonzalez V, Galimberti R, Sirqueira AS, Barcia FL, Simao RA (2008) *J Appl Polym Sci* 108:159
183. Stewart I, Chambers A, Gordon T (2007) *Int J Adhesion Adhes* 27:277
184. Tzetzis D, Hogg PJ (2006) *Compos Part A* 37:1239
185. Serrano E, Gustafsson PJ (1999) *Int J Adhesion Adhes* 19:9
186. Serrano E (2004) *Int J Adhesion Adhes* 24:23
187. Konnerth J, Gindl W, Harm M, Muller U (2006) *Holz Als Roh-Und Werkstoff* 64:269
188. Konnerth J, Jager A, Eberhardsteiner J, Muller U, Gindl W (2006) *J Appl Polym Sci* 102:1234
189. Konnerth J, Gindl W, Muller U (2007) *J Appl Polym Sci* 103:3936
190. Adhesives for load-bearing timber structures, British-adopted European standard, EN302 parts 1-4 (2004)
191. Nogi M, Handa K, Nakagaito AN, Yano H (2005) *Appl Phys Lett* 87:243110
192. Nogi M, Abe K, Handa K, Nakatsubo F, Ifuku S, Yano H (2006) *Appl Phys Lett* 89:133124
193. Nogi M, Yano H (2008) *Adv Mater* 20:1849
194. Nogi M, Abe K, Handa K, Nakatsubo F, Ifuku S, Yano H (2006) *Appl Phys Lett* 89:233123
195. Ifuku S, Nogi M, Abe K, Handa K, Nakatsubo F, Yano H (2007) *Biomacromolecules* 8:1973
196. Iwamoto S, Nakagaito AN, Yano H, Nogi M (2005) *Appl Phys A* 81:CP8
197. Iwamoto S, Nakagaito AN, Yano H (2007) *Appl Phys A* 89:461
198. Abe K, Iwamoto S, Yano H (2007) *Biomacromolecules* 8:3276
199. Nogi M, Iwamoto S, Nakagaito AN, Yano H (2009) *Adv Mater* 21:1595
200. Yano H, Hirose A, Inaba S (1997) *J Mater Sci Lett* 16:1906
201. Yano H, Hirose A, Collins PJ, Yazaki Y (2001) *J Mater Sci Lett* 20:1125
202. Yano H (2001) *J Mater Sci Lett* 20:1127
203. Yano H, Nakahara S (2004) *J Mater Sci* 39:1635. doi: [10.1023/B:JMSC.0000016162.43897.0a](https://doi.org/10.1023/B:JMSC.0000016162.43897.0a)
204. Nakagaito AN, Iwamoto S, Yano H (2005) *Appl Phys A* 80:93
205. Nakagaito AN, Yano H (2008) *Cellulose* 15:323
206. Gomes A, Goda K, Ohgi J (2004) *JSME Int J A* 47:541
207. Goda K, Sreekala MS, Gomes A, Kaji T, Ohgi J (2006) *Compos A* 37:2213
208. Ishikura Y, Nakano T (2007) *J Wood Sci* 53:175
209. Nakano T, Sugiyama J, Norimoto M (2000) *Holzforchung* 54:315
210. Iwatake A, Nogi M, Yano H (2008) *Compos Sci Technol* 68:2103
211. Dalmas F, Chazeau L, Gauthier C, Cavaille JY, Dendievel R (2006) *Polymer* 47:2802
212. Dalmas F, Cavaille JY, Gauthier C, Chazeau L, Dendievel R (2007) *Compos Sci Technol* 67:829
213. Angles MN, Dufresne A (2001) *Macromolecules* 34:2921
214. Suryanegara L, Nakagaito AN, Yano H (2009) *Compos Sci Technol* 69:1187
215. Nakagaito AN, Fujimura A, Sakai T, Hama Y, Yano H (2009) *Compos Sci Technol* 69:1293
216. Kong J, Franklin NR, Zhou C, Chapline MG, Peng S, Cho K, Dail H (2000) *Science* 287:622
217. Bachtold A, Hadley P, Nakanishi T, Dekker C (2001) *Science* 294:1317
218. Zimmermann J, Cebulla MPJ, Monninghoff S, Kiedrowski GV (2008) *Angew Chem Int Ed* 47:1
219. Mangalam AP, Simonsen J, Benight AS (2009) *Biomacromolecules* 10:497
220. Lloyd RD, Burns MC (1979) *J Polym Sci* 17:3473
221. Williams A, Ibrahim IT (1981) *Chem Rev* 81:589
222. Winter WT, Goodrich JD (2005) Abstracts of papers, 229th ACS national meeting, San Diego, CA, March 13-17, 2005, CELL
223. Lehninger A (1970) *Biochemistry*. Worth Publishers, New York
224. Mohanty AK, Misra M, Hinrichsen G (2000) *Macromol Mater Eng* 276:1
225. Bismarck A, Mishra S, Lampke T (2005) In: Mohanty AK, Misra M, Drzal LT (eds) *Natural fibres, biopolymers and their biocomposites*. CRC Press, Boca Raton, p 261
226. Yamanaka S, Watanabe K, Kitamura N, Iguchi M, Mitsunashi S, Nishi Y, Uryu M (1989) *J Mater Sci* 24:3141. doi:[10.1007/BF01139032](https://doi.org/10.1007/BF01139032)
227. Bismarck A (2008) *Express Polym Lett* 2:687
228. Gardner DJ, Oporto GS, Mills R, Samir M (2008) *J Adhesion Sci Technol* 22:545
229. Baltazar-Y-Jimenez A, Bistriz M, Schulz E, Bismarck A (2008) *Compos Sci Technol* 68:215
230. Hsiao KT (2006) In: Advani SG (ed) *Processing and properties of nanocomposites*. World Scientific, New Jersey, p 141
231. Juntaro J (2008) *Environmentally friendly truly green hierarchical nanocomposites*. Imperial College, London
232. Paakko M, Vapaavuori J, Silvennoinen R, Kosonen H, Ankerfors M, Lindstrom T, Berglund LA, Ikkala O (2008) *Soft Matter* 4:2492

233. Henriksson M, Berglund LA, Isaksson P, Lindstrom T, Nishino T (2008) *Biomacromolecules* 9:1579
234. Svagan AJ, Hedenqvist MS, Berglund L (2009) *Compos Sci Technol* 69:500
235. Ward IM, Hine PJ (1997) *Polym Eng Sci* 37:1809
236. Ward IM, Hine PJ (2004) *Polymer* 45:1413
237. Cabrera N, Alcock B, Loos J, Peijs T (2004) *Proc Inst Mech Eng L* 218:145
238. Alcock B, Cabrera NO, Barkoula NM, Loos J, Peijs T (2006) *Compos A* 37:716
239. Alcock B, Cabrera NO, Barkoula NM, Spoelstra AB, Loos J, Peijs T (2007) *Compos A* 38:147
240. Alcock B, Cabrera NO, Barkoula NM, Peijs T (2006) *Compos Sci Technol* 66:1724
241. Alcock B, Cabrera NO, Barkoula NM, Reynolds CT, Govaert LE, Peijs T (2007) *Compos Sci Technol* 67:2061
242. Nishino T, Matsuda I, Hirao K (2004) *Macromolecules* 37:7683
243. Qin C, Soykeabkaew N, Xiuyuan N, Peijs T (2008) *Carbohydr Polym* 71:458
244. Zhao Q, Yam R, Zhang BQ, Yang YK, Cheng XJ, Li R (2009) *Cellulose* 16:217
245. Gindl W, Keckes J (2004) *Compos Sci Technol* 64:2407
246. Peijs T (2003) *Mater Today* 30
247. Cabrera N, Alcock B, Loos J, Peijs T (2004) *Proc Inst Mech Eng L* 218:145
248. Alcock B, Cabrera NO, Barkoula N-M, Peijs T (2006) *Compos A* 37(5):716
249. Alcock B, Cabrera NO, Barkoula N-M, Spoelstra AB, Loos J, Peijs T (2007) *Compos A* 38:147
250. Matsumura H, Sugiyama J, Glasser WG (2000) *J Appl Polym Sci* 78:2242
251. Matsumura H, Glasser WG (2000) *J Appl Polym Sci* 78:2254
252. Nishino T, Arimoto N (2007) *Biomacromolecules* 8:2712
253. Gandini A, Curvelo AAD, Pasquini D, de Menezes AJ (2005) *Polymer* 46:10611
254. de Menezes AJ, Pasquini D, Curvelo AAD, Gandini A (2009) *Carbohydr Polym* 76:437
255. de Menezes AJ, Pasquini D, Curvelo AAD, Gandini A (2009) *Cellulose* 16:239
256. Gindl W, Keckes J (2005) *Polymer* 46:10221
257. Gindl W, Martinschitz KJ, Boesecke P, Keckes J (2006) *Compos Sci Technol* 66:2639
258. Gindl W, Keckes J (2007) *J Appl Polym Sci* 103:2703
259. Duchemin B, Newman RH, Staiger MP (2007) *Cellulose* 14:311
260. Duchemin BJC, Newman RH, Staiger MP (2009) *Compos Sci Technol* 69:1225
261. Xun L, Ming QZ, Min ZR, Gui CY (2003) *Polym Adv Technol* 14:676
262. Lu X, Zhang MQ, Rong MZ, Yue DL, Yang GC (2004) *Polym Polym Compos* 12:297
263. Soykeabkaew N, Arimoto N, Nishino T, Peijs T (2008) *Compos Sci Technol* 68:2201
264. Soykeabkaew N, Nishino T, Peijs T (2009) *Compos A* 40:321
265. Soykeabkaew N, Sian C, Gea S, Nishino T, Peijs T (2009) *Cellulose* 16:435
266. Heijenrath R, Peijs T (1996) *Adv Compos Lett* 5:81
267. Luo S, Netravali AN (1999) *Polym Compos* 20:367
268. Van Den Oever MJA, Bos HL, Van Kemenade MJJM (2000) *Appl Compos Mater* 7:387
269. Oksman K, Wallstrom L, Berglund LA, Filho RDT (2002) *J Appl Polym Sci* 84:2358
270. Madsen B, Lilholt H (2003) *Compos Sci Technol* 63:1265
271. Liu W, Misra M, Askeland P, Drzala LT, Mohanty AK (2005) *Polymer* 46:2710
272. Van de Weyenberg I, Truong TC, Vangrimde B, Verpoest I (2006) *Compos A* 37:1368
273. Brahim SM, Cheikh RB (2007) *Compos Sci Technol* 67:140
274. Klemm D, Schmauder H, Heinze T (2003) *Biopolymers* 6:275
275. Lu X, Zhang MQ, Rong MZ, Shi G, Yang GC (2003) *Compos Sci Technol* 63:177
276. Garkhail SK, Heijenrath RWH, Peijs T (2000) *Appl Compos Mater* 7:351
277. Gea S, Torres FG, Troncoso OP, Reynolds CT, Vilasecca F, Iguchi M, Peijs T (2007) *Int Polym Process* 22:497
278. Van de Weyenberg I, Ivens J, De Coster A, Kino B, Baetens E, Verpoest I (2001) 1st international EcoComp conference. Elsevier Sci Ltd., London, p 1241
279. Ashby MF, Jones DRH (1989) *Engineering materials 1: an introduction to their properties and applications*. Pergamon Press, Oxford
280. Morton WE, Hearle JWS (1975) *Physical properties of textile fibres*. William Heinemann Ltd, London