







ARTICLE

<https://doi.org/10.1038/s41467-019-13713-1>

OPEN

Robust edge photocurrent response on layered type II Weyl semimetal WTe_2

Qinsheng Wang ^{1,2}, Jingchuan Zheng^{1,2}, Yuan He^{1,2}, Jin Cao¹, Xin Liu³, Maoyuan Wang¹, Junchao Ma³, Jiawei Lai ³, Hong Lu³, Shuang Jia^{3,4}, Dayu Yan⁵, Youguo Shi⁵, Junxi Duan^{1,2}, Junfeng Han^{1,2}, Wende Xiao ^{1,2}, Jian-Hao Chen ^{3,4}, Kai Sun ⁶, Yugui Yao^{1,2*} & Dong Sun ^{3,4*}

Photosensing and energy harvesting based on exotic properties of quantum materials and new operation principles have great potential to break the fundamental performance limit of conventional photodetectors and solar cells. Weyl semimetals have demonstrated novel optoelectronic properties that promise potential applications in photodetection and energy harvesting arising from their gapless linear dispersion and Berry field enhanced nonlinear optical effect at the vicinity of Weyl nodes. In this work, we demonstrate robust photocurrent generation at the edge of T_d - WTe_2 , a type-II Weyl semimetal, due to crystalline-symmetry breaking along certain crystal fracture directions and possibly enhanced by robust fermi-arc type surface states. This edge response is highly generic and arises universally in a wide class of quantum materials with similar crystal symmetries. The robust and generic edge current response provides a charge separation mechanism for photosensing and energy harvesting over broad wavelength range.

¹Key Laboratory of Advanced Optoelectronic Quantum Architecture and Measurement (MOE), School of Physics, Beijing Institute of Technology, Beijing, China. ²Micronano Centre, Beijing Key Lab of Nanophotonics & Ultrafine Optoelectronic Systems, Beijing Institute of Technology, Beijing, China.

³International Center for Quantum Materials, School of Physics, Peking University, Beijing, China. ⁴Collaborative Innovation Center of Quantum Matter, Beijing, China. ⁵Beijing National Laboratory for Condensed Matter Physics, Institute of Physics, Chinese Academy of Sciences, Beijing, China. ⁶Department of Physics, University of Michigan, Ann Arbor, MI 48109-1040, USA. *email: ygyao@bit.edu.cn; sundong@pku.edu.cn

Efficient separation of photo-excited electron–hole pairs is an essential ingredient for various highly applicable fields such as photo sensing¹, solar energy harvesting² and photo catalysis³. For this purpose, imbalanced momentum distribution of non-equilibrium photo-excited charge carriers, either from population imbalance or velocity imbalance in k -space, is required. Technically, this can be achieved by breaking inversion symmetry either internally or externally in devices. In conventional semiconductors with inversion symmetry, such as silicon, GaAs and graphene, applying a bias voltage over the electrodes externally is a straightforward approach to break the inversion symmetry of the device. Advanced approaches of inversion symmetry breaking through external ways can also be achieved by introducing a built-in electric field in a PN junction⁴, Schottky junction⁵ or at interface with other materials, or domains processing different Seebeck coefficients through photo thermoelectric effect (PTE)⁶. Although the above schemes have been successfully demonstrated for photo-excited charge separation, there are fundamental limitations on device fabrication and specific applicable circumstances. For example, applying an external bias on detectors based on semi-metallic materials such as Dirac/Weyl semimetals is not feasible because the external bias can induce a significant current, termed as the dark current, in conducting materials even in the absence of light^{1,7,8}. PN junctions can efficiently separate photoexcited electron–hole pairs, but its application is limited by the requirement of doping, which can be very challenging for certain materials.

On the other hand, the inversion symmetry breaking can naturally occur in some classes of crystals, which could lead to efficient charge separation of photo-excited carriers and result in shift current response⁹. This phenomenon, which is often referred to as bulk photovoltaic effect (BPVE) or anomalous photovoltaic effect^{10,11}, is due to the fact that the real space position of electron shifts a little as the expected electron positions of the ground state and the excited state are slightly different after photoexcitation under homogenous photo illumination in non-centrosymmetric crystal. Previously, this effect is mainly demonstrated in semiconductors with non-centrosymmetric structure such as LiNbO_3 ¹² and BaTiO_3 ¹³. Nevertheless, most of these crystals have large bandgaps, which limit their applications in low-energy photo detection and energy harvesting. Weyl semimetals with inversion symmetry breaking provide a promising class of material candidates via this route^{14–17}. The gapless linear-dispersed band structure of Weyl semimetal allows broadband wavelength operation extendable to far-infrared or even Terahertz range^{18,19}. In addition, the monopole-type of Berry curvature around the Weyl nodes can enhance the nonlinear optical effects at the vicinity of Weyl nodes^{20–23}, which leads to a large photocurrent response over a broad wavelength range²⁴. However, the shift current response in inversion-symmetry-breaking Weyl semimetals is canceled under the light incident geometry that the surface perpendicular to the incident light still preserves the in-plane inversion symmetry. For example, in well-established Type-II Weyl semimetals with C_{2v} crystal point group, such as WTe_2 , MoTe_2 , and TaIrTe_4 ^{25,26}, the second order nonlinear shift current response vanishes if light incidence direction is along the crystallographic \hat{c} -axis²⁵.

In this work, we experimentally show that the photo excited electron–hole pairs can be separated efficiently along certain edges due to the broken of C_{2v} symmetry upon fracturing along certain crystallographic directions, which provides robust edge current response in Type-II Weyl semimetal WTe_2 under normal incidence. Interestingly, although the survival of the photocurrent response is solely determined by the edge fracture direction from a pure crystal symmetry consideration, the observed responsivity possibly relates to the fermi-arc type surface states.

Results

Edge photocurrent response of WTe_2 . T_d - WTe_2 with crystal structure shown in Fig. 1a is proposed as an inversion-symmetry breaking type-II Weyl semimetal²⁷. It belongs to space group of $Pmn2_1$ (No. 31) and point group C_{2v} , which consists a twofold rotation symmetry with screw rotation axis C_2 along the crystallographic \hat{c} -axis, and mirror symmetry with mirror plane (M_a) perpendicular to the crystallographic \hat{a} -axis and glide mirror symmetry with mirror plane (M_b) perpendicular to the crystallographic \hat{b} -axis. In the first Brillion zone, WTe_2 has 8 Weyl nodes laying on $k_c = 0$ surface (see below). These Weyl nodes come in two quartets located 0.052 eV and 0.058 eV above the Fermi level, all of which are type-II Weyl nodes that exist at the boundaries between electron and hole pockets²⁷. Due to the inversion symmetry breaking, WTe_2 demonstrates large second order photocurrent response in Weyl semimetals with oblique light excitation²⁵, but for normal incident light excitation with electric fields lying in the $\hat{a} - \hat{b}$ plane, the planar components of a rank-3 tensor with the C_{2v} symmetries are all null: $T_{\alpha\beta\gamma} = 0$, due to the existence of in-plane inversion symmetry in the $\hat{a} - \hat{b}$ plane.

In a typical scanning photocurrent measurement (SPCM) shown in Fig. 1b, 633-nm pulse filtered from a fiber white light super-continuum source is used to excite a 6-nm thick two-terminal WTe_2 device under un-biased condition at room temperature. According to the scanning photocurrent response shown in Fig. 1c, d, the photocurrent is mainly generated either along the interface of WTe_2 -metal contact or along the edge of the WTe_2 flakes. The response at the WTe_2 -contact interface is expected, which has been well understood from previously studies on similar devices based on other 2D layered semimetals^{26,28}. The charge separation is induced by the interplay of built-in electric field and PTE effect at the interface in absence of external voltage bias. When the excitation is away from the contact area, the major charge separation mechanisms (e.g., PTE, built-in electric field, photo Dember) all vanish, thus the PC response should be negligible because all the planar components of rank-3 tensor are zero under normal incident light excitation. This is consistent with the experimental observation that no photocurrent is observed over the region away from the metal contact (Fig. 1d). However, we have observed clear photocurrent response of $27 \mu\text{A W}^{-1}$ at the edge of the device which is totally unexpected. Such robust edge photocurrent response, to the best of our knowledge, has never been observed without applying an external magnetic field in non-chiral materials^{29,30}.

Symmetry analysis. To further investigate the edge current response of T_d - WTe_2 , eight devices are fabricated with edges fracturing along different crystal orientations within $\hat{a} - \hat{b}$ plane. The SPCM results of three representative devices are shown in Fig. 2. The in-plane fracture is random during the mechanical exfoliation process, but for WTe_2 , it has the tendency to fracture along certain in-plane crystallography orientations³¹. The most preferable fracture direction within $\hat{a} - \hat{b}$ plane is along the tungsten chain direction ($\langle 100 \rangle$). Experimentally, the crystal orientation of the edge can be identified by polarization resolved Raman spectroscopy, the ratio of Raman peaks at 164 and 212 cm^{-1} reaches maximum when the laser polarization is parallel to the $\langle 100 \rangle$ direction as shown in Supplementary note 1³².

An obvious feature from Fig. 2 is that not all edges have photocurrent responses, photocurrent generation only happens on edges along certain crystal orientations. Even within one device, some edges exhibit photo responses while the other edges don't. This is demonstrated in the 150-nm thick device shown in

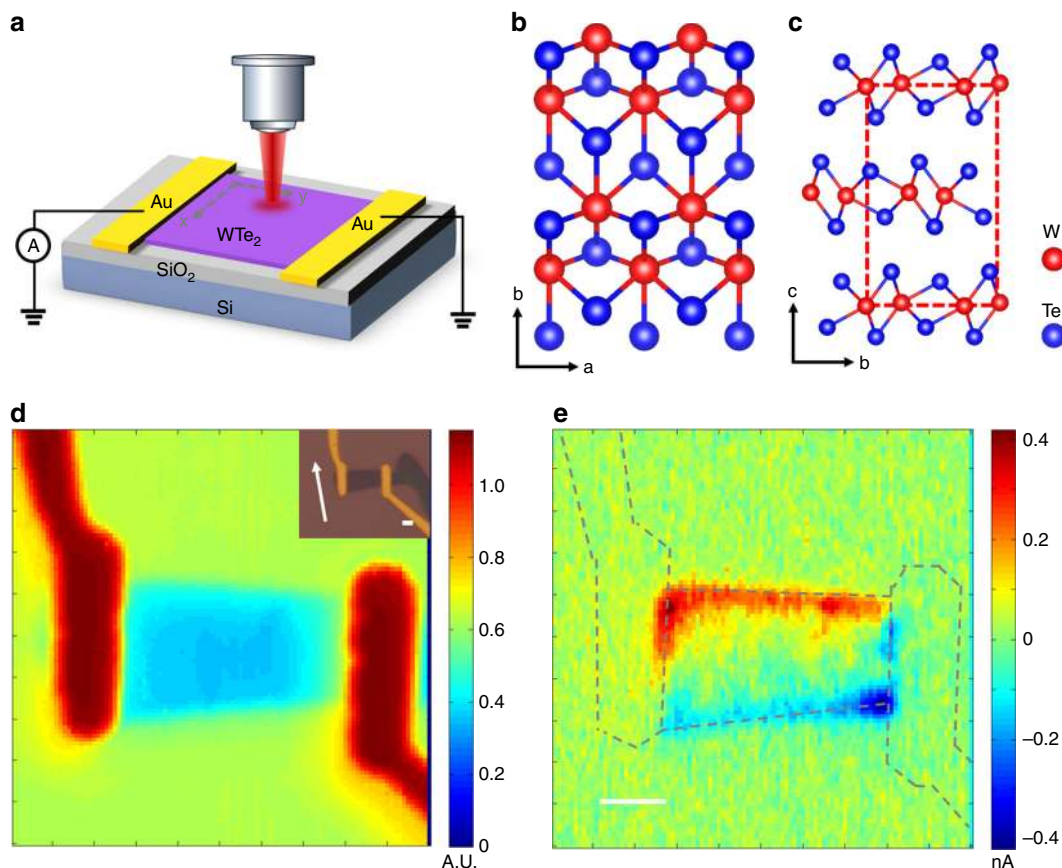


Fig. 1 Edge photocurrent response in WTe₂. **a** Schematic diagram of scanning photocurrent measurement of a WTe₂ field effect device. **b, c** Crystal structure of WTe₂. Top view of the crystal structure of $\hat{a}-\hat{b}$ plane (**b**) and cross-section view of the interlayer stacking structure (**c**) of T_d WTe₂. **d, e** Scanning reflection image (**d**) and scanning photocurrent response (**e**) of a typical 6-nm thick WTe₂ device. The measurement was performed with 633-nm light filtered from white light super-continuum and the power shine on the sample was about 15 μ W. The excitation light was focused using a 100 \times objective lens and the focused spot size was 0.85 μ m. The inset of Figure e is the optical microscope image and the white arrow marks the crystallographic \hat{a} -axis. The scale bars are all 2 μ m.

Fig. 2a. The device has irregular top edges with five different major directions and the long bottom edge is identified to be along the $\langle 100 \rangle$ direction. According to the SPCM shown in Fig. 2b, we observe photocurrents along three of the five edges at the top, while the other two top edges and the bottom edge show no photocurrent responses, and all these edges with vanishing photocurrent response are identified to be along the $\langle 100 \rangle$ direction. Furthermore, the photocurrent from the area labeled 1 on the top edge is negative, while those from the areas labelled 3 and 5 are positive. The device shown in Fig. 2c, d exhibits similar but more salient photocurrent response. The top edge along $\langle 100 \rangle$ has no photocurrent response, while the two bottom edges, with a fracture direction about 11-degree angle with respect to the top edge, show clear photocurrent responses.

The third device shown in Fig. 2e-h provides an additional feature of the edge current response: the edge photocurrent response may switch sign over different edges of one device. The SPCM between contacts 1 and 2, contacts 2 and 3, contacts 4 and 5 are shown in Fig. 2f-h respectively (more results from other contacts shown in Supplementary Fig. 5). The long edge on the left (Fig. 2e), which are along the $\langle 100 \rangle$ direction, has no photocurrent response. The right edge in Fig. 2g, which is parallel to the long left edge, doesn't show any edge current response either. The edges along lower symmetry directions in Fig. 2f have photocurrent response, the response of different edges can have opposite photocurrent sign. In Fig. 2h, besides the free-edge current responses, the photocurrent can also be generated on

multilayer steps as marked by the dash circles (similar photo response from step-edge marked by dash circle is also observed in Fig. 2f). Atomic force microscope measurement indicates the step is about 80 nm (Supplementary Fig. 3). From the above experimental results, we conclude that the edge photocurrent response is determined by the crystal fracture orientation of the edge: regardless of the flake thickness, there is no edge photocurrent response if the edge fractures along the high symmetry $\langle 100 \rangle$ or $\langle 010 \rangle$ direction (Supplementary Fig. 9). However, for low symmetry fracture orientations that are not parallel to the $\langle 100 \rangle$ or $\langle 010 \rangle$ direction, there are clear edge current responses. The crystal symmetry of the step-edges is lowered in a very similar way to free edges, and thus the photocurrent response from the step-edge shares the same origin as the photocurrent response of free-edge. The emergence of the edge current response along the low symmetry fracture edges observed in Fig. 2 can be well explained through the following symmetry consideration. The process of photocurrent generation can be described as:

$$j^\alpha = \sigma^{\alpha\beta\gamma} E^\beta(\omega) E^\gamma(-\omega) \quad (1)$$

where \mathbf{j} is the DC current density and $\mathbf{E}(\omega)$ is the optical electric field, where indices α , β , and γ mark spatial components of these vectors. The coefficient $\sigma^{\alpha\beta\gamma}$ must obey the symmetry of the crystal, and it shall vanish unless the two sides of the equation have identical response to all symmetry operations, known as the symmetry selection rule, which can be systematically constructed

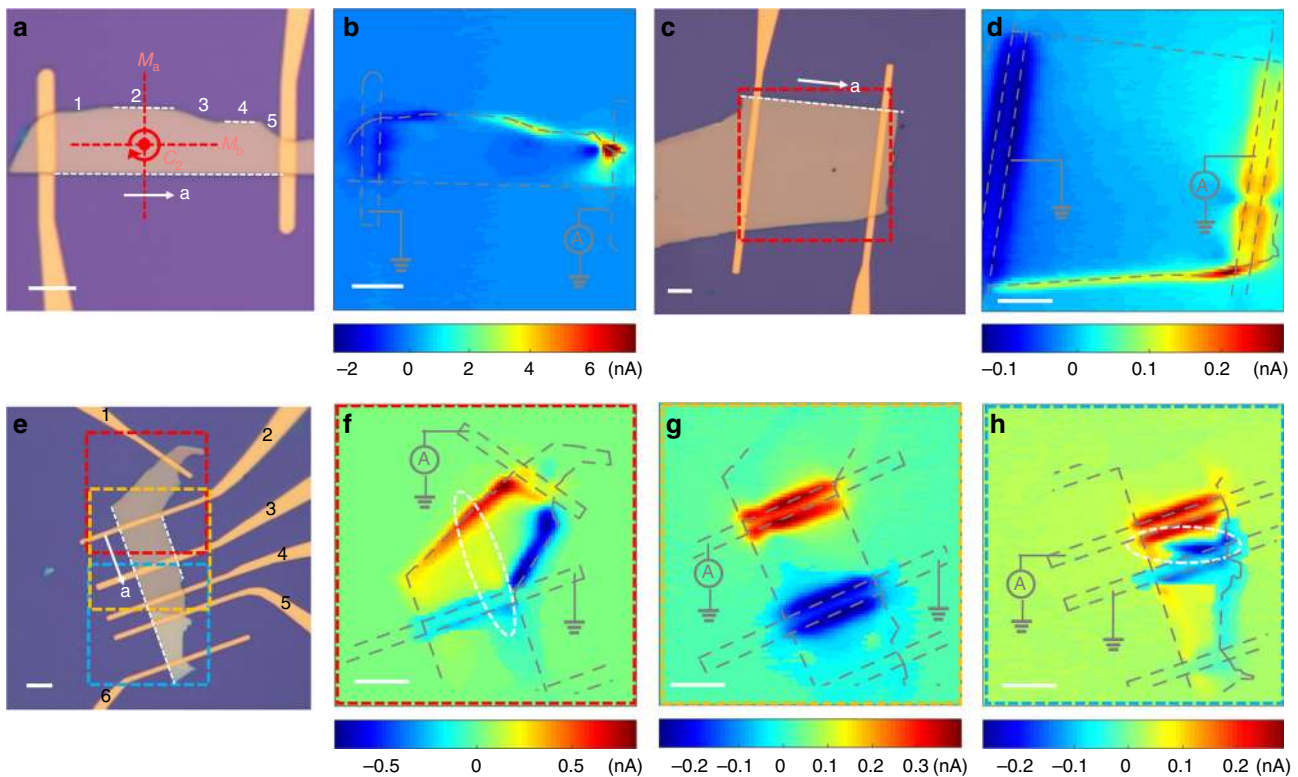


Fig. 2 Photocurrent response from edges along different directions. **a** and **b** Optical microscope image (**a**) and scanning photocurrent image (**b**) of a device with irregular shape. **c** and **d**, Optical microscope image (**c**) and scanning photocurrent image (**d**) of a device with trapezium shape. **e**, **f**, **g** and **h** Optical microscope image (**e**) and scanning photocurrent image of different parts (**f**, **g**, and **h**) of a long device with edges along various crystal fracture directions. All measurements were excited with 180- μ W 1.96-eV pulse laser. The white arrows in microscopy images mark the crystallographic \hat{a} -axis and the white dashed lines mark the edges that have no photocurrent responses. The red symbols in Figure (a) display the point group symmetries of the crystal lattice. Photocurrents only arise along edges that break the mirror symmetry, in good agreement with the symmetry analysis. The scale bars are all 8 μ m.

utilizing group representations³³. For a crystal with inversion symmetry, because the left hand side (l.h.s.) j^α is odd under space inversion, while $E^\beta(\omega)E^\gamma(-\omega)$ on the right hand side (r.h.s.) is even, the coefficient $\sigma^{\alpha\beta\gamma}$ must vanish, i.e., this photocurrent is prohibited by symmetry. For a 2D system, the photocurrent also vanishes if there is a twofold axis perpendicular to the 2D plane. This is because, as far as the in-plane components of \mathbf{j} and $\mathbf{E}(\omega)$ are concerned, under such a twofold rotation, both these two quantities change sign, and thus again the l.h.s. and r.h.s. of the equation get opposite signs, making $\sigma^{\alpha\beta\gamma} = 0$. This is the key reason why photocurrent is absent in the bulk in our experiment, despite that the 3D space-inversion symmetry is already explicitly broken by the crystal structure. Along the edge, however, the twofold rotational symmetry is broken, and thus the selection rule that prohibits the photocurrent is now lifted, which results in the emergence of edge photocurrents that we observed. Although the break of twofold rotational symmetry at the edge in general allows a photocurrent, other symmetries may enforce further constraints on the direction of the current. In particular, if the edge is perpendicular to a mirror plane of the crystal, e.g., $\langle 100 \rangle$ and $\langle 010 \rangle$, this mirror symmetry will be preserved by the edge. Because the r.h.s. of the equation is invariant under mirror, only current parallel to the mirror (i.e., invariant under the mirror) is allowed by symmetry. In our experiment, this means that if we consider edges along the $\langle 100 \rangle$ direction (Fig. 3a), the mirror plane perpendicular to the edge, along $\langle 010 \rangle$, will confine the photocurrent along the $\langle 010 \rangle$ direction, while the current response along the $\langle 100 \rangle$ direction stays zero. According to the Shockley-Ramo theorem illustrated below, which describes the nonlocal photocurrent response from local charge separation,

the local photocurrent along the perpendicular direction to the edge cannot induce a macroscopic signal that is perpendicular to the weighting field. The Shockley-Ramo theorem is based on the fact that the current induced in the electrode is due to the instantaneous change of electrostatic flux lines into or out of the electrode. The macroscopic measured current I at the electrode can be described by the local excited current density $\mathbf{j}_{\text{loc}}(x, y)$ as²⁹:

$$I = A \int \mathbf{j}_{\text{loc}}(x, y) \cdot \nabla \vartheta(x, y) dx dy \quad (2)$$

where the $\nabla \vartheta(x, y)$ is an auxiliary weighting field, which is the solution to a suitable Laplace problem assuming that $\vartheta = 0$ at the ground contact and $\vartheta = 1$ at the current-collecting contact; A is a prefactor that depends on the device configuration. We provide the simulation results of the weighting field lines near the edge of the device as shown in Fig. 3c, which is nearly parallel to the edge. So for \mathbf{j}_{loc} perpendicular to the edge, the response is zero. This is consistent with our experimental observation that the edge current response vanishes when the edge fractures along the $\langle 100 \rangle$ direction. For edges oblique to the mirror planes (Fig. 3b), because the mirror symmetry is broken along these edges, \mathbf{j}_{loc} along and perpendicular to the edge are both allowed and thus a macroscopic photocurrent signal can be observed. We note our discussion applies to relatively thick samples. For thinner layers when the translational symmetry along the crystallographic \hat{c} -axis is effectively broken, the glide mirror plane M_b and the rotational symmetry around the crystallographic \hat{c} -axis should disappear, which may result in different edge response that requires further investigations^{34,35}.

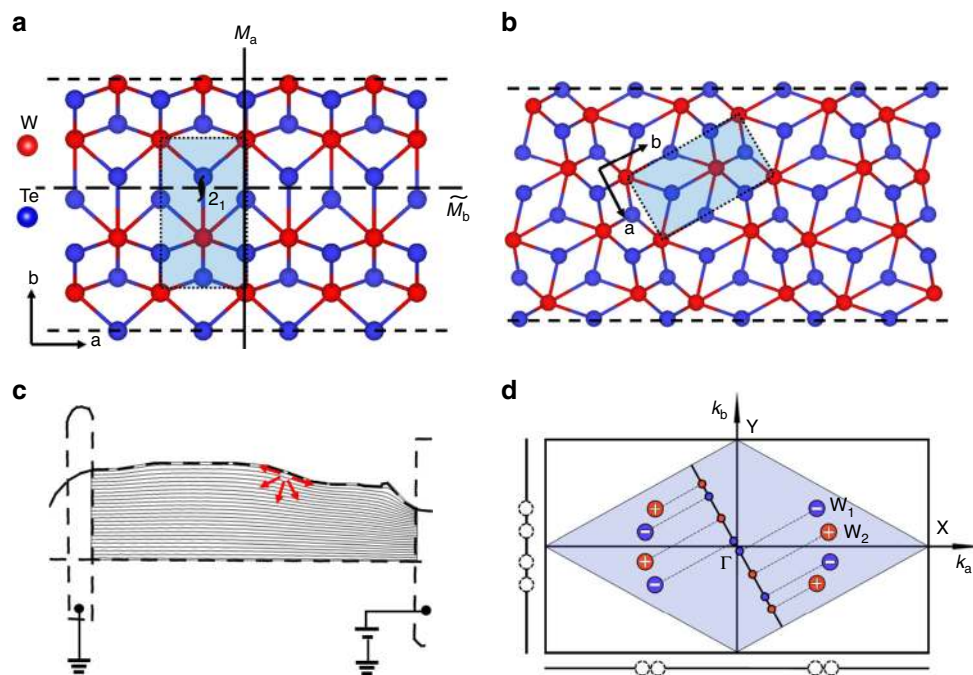


Fig. 3 Symmetry analysis of edges along different directions of WTe_2 . **a** and **b** Schematic of lattice structures with edges along $\langle 100 \rangle$ (**a**) and $\langle 110 \rangle$ (**b**) directions respectively. The unit cell is shadowed in a blue rectangular in each Figure. The mirror plane M_a of the $\langle 100 \rangle$ direction is marked by solid line and the glide mirror plane M_b of the $\langle 010 \rangle$ direction is marked by dash line in Figure a, the screw axis along the $\langle 001 \rangle$ direction is marked by symbol 2_1 . **c** Collection of the local photocurrent from a WTe_2 device in a Shockley-Ramo-type scheme. The solid gray lines are the weighting field lines of the device used in Fig. 2a with the source contact set at 1 V and the drain contact set at 0 V. The red arrows represent the possible directions of local edge photocurrent. The simulations are performed using COMSOL. **d** The distribution of Weyl nodes in bulk WTe_2 and the projections of Weyl nodes on (100), (010) and (110) surfaces. WTe_2 has eight Weyl nodes all locating in $k_c = 0$ plane, each four symmetry-related nodes are referred as W_1 and W_2 respectively. The mirror symmetry-related Weyl nodes with opposite chirality annihilate in pairs when projected onto (100) and (010) surfaces, but the Fermi arcs can survive in higher Miller-index surface BZs.

Edge photocurrent generation mechanism. To further elucidate the edge current generation mechanism, we have performed systematic excitation power, polarization and wavelength-dependent studies. Figure 4a shows the magnitude of edge current response is linear with the excitation power, which indicates the edge photocurrent generation is a second order process of excitation light field ($I \sim E(-\omega)E(\omega)$). The response has no clear differences in terms of SPCM response pattern for horizontal and vertical-polarized light excitation as shown in Fig. 4b, c. Further linear polarization dependent measurement indicates the response is slightly anisotropic (Fig. 4d): the long axis of the anisotropic ellipse is along the $\langle 100 \rangle$ direction, and the anisotropy ratio is 1.1. The insensitive photocurrent response on the excitation light polarization is consistent with the shift current nature³⁶ of the photocurrent generated on the edge. In Fig. 4e–h, we note that the SPCM pattern is quite inert to the excitation wavelength over a broad photon energy range from 0.12–1.96 eV. The response pattern is qualitatively the same on the edge except that the spatial resolution degrades at longer wavelength due to wavelength-dependent diffraction limit. The same direction of the generated photocurrent over difference wavelengths indicates the sign of the second order nonlinear DC photoconductivity tensor $\sigma^{\alpha\beta\gamma}(0; \omega, -\omega)$ stays the same for different wavelengths.

Discussion

It is worthwhile to emphasize that the edge current generation is in contrast to the conventional approach, where an external voltage is needed to separate electron–hole pairs and to obtain a current. In the edge current response, the crystal itself provides an

effective electric field near the edge of the sample originating from its own symmetry, which naturally separates electron–hole pairs without external input or the needs to construct sophisticated heterostructures. This symmetry analysis, as well as the conclusions, applies generically to any materials with similar symmetries, independent of any microscopic details or the topological properties of the materials. Although the symmetry fully dictates the qualitative behavior of the observed phenomena and guarantees the existence of the edge photocurrent, it is worthwhile to emphasize that symmetry alone doesn't predict the magnitude of the photo response, which relies on material properties. In particular, because the significant edge photocurrent is observed in a topologically nontrivial Weyl semimetal, which has nontrivial topological features at the edge/surface, it is not unreasonable to suspect whether the topology surface states are responsible for the significant response amplitude. To have a conclusive answer, more detailed investigations are needed, which is beyond the central focus of our study. However, theoretically, there exists certain mechanisms, which could result in constructive interplay between the topological edge modes and the edge photocurrent, and thus enhance the amplitude of the photocurrent. For example, the topological surface states offer one additional conducting channel, on top of the bulk contributions. Interestingly, the density of states of this extra (surface/edge) conducting channel depends on the edge orientation in the same way as the edge photocurrent, i.e. it vanishes on the (100) and (010) surfaces where the edge photocurrent is zero, but remains finite on surfaces with high Miller indices, where the photocurrent is observed. This is illustrated in more detail in Fig. 3. In consistent with the symmetry consideration shown in Fig. 3a, b, for high symmetry facture edge along the $\langle 100 \rangle$ or $\langle 010 \rangle$ direction, the

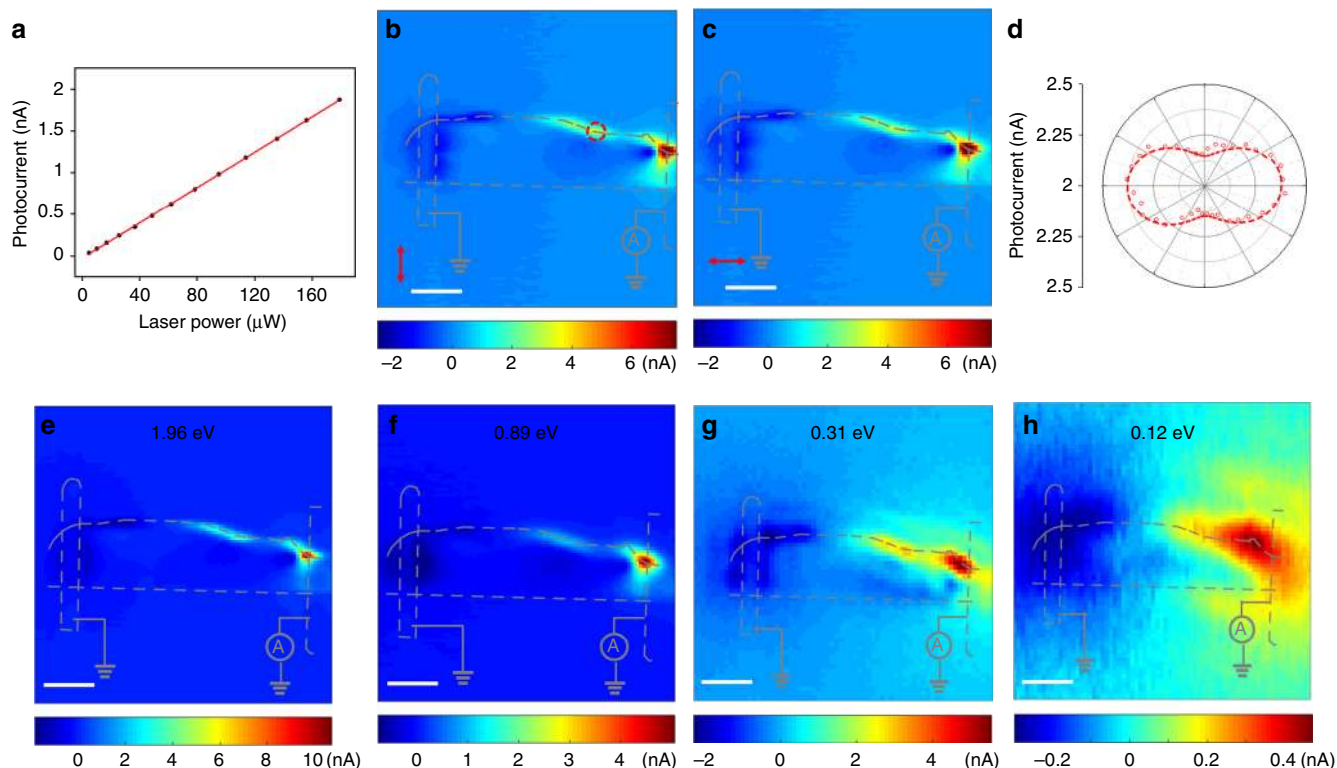


Fig. 4 Excitation power and polarization dependence of edge photocurrent. **a** Power dependence of the edge photocurrent responses with 1.96-eV pulse excitation. **b, c** Scanning photocurrent microscopies under horizontal- (**b**) and vertical-polarized (**c**) light excitation respectively. The light polarization is marked by the red arrows. **d** Polarization dependent photocurrent responses with light focused on the spot marked by a red circle in Figure **b**. **e–h** Scanning photocurrent microscopies with excitation photon energies of 1.96 eV (**e**), 0.89 eV (**f**), 0.31 eV (**g**) and 0.12 eV (**h**) respectively. All measurements were performed on the device shown in Fig. 2a. The scale bars are all 8 μm .

projection of Weyl nodes with opposite chirality annihilate in pairs as projected onto the (100) and (010) surface (Fig. 3d). Because a Fermi arc of Weyl semimetal has to start from the projection of Weyl node of one chirality on the surface and terminate on the projection of Weyl node of the opposite chirality, there is no Fermi arc along these edges. However, the Fermi arc can possibly survive in higher Miller-index surface Brillouin zones (BZ), for example, when projected onto the (110) surface. In addition, as shown above, one key ingredient of edge photocurrents is the symmetry breaking effect induced by the 1D edge. Although geometrically the edge is a 1D line, its symmetry breaking effect is not limited to the first line of atoms at the edge. Instead, it shall penetrate into the bulk by some distance. Longer penetration here means that a wider range near the edge will be influenced by edge and shows signature of broken twofold symmetry, and thus results in a stronger edge photocurrent. For Weyl semimetal, topology offers an extra channel for the information about the edge to penetrate into the bulk, through the topologically-protected edge states. The quantum wavefunction of an edge state penetrates into the bulk, and its penetration depth varies according to the surface momentum^{37,38}, which helps spreading information about the edge (e.g., symmetry reduction at the edge) to a wider region into the bulk, and thus enhance the intensity of the edge photocurrents.

In summary, we have observed a robust photocurrent response on the edge of T_d -WTe₂ along low symmetry crystal fracture directions due to the lifting of symmetry constraints. The Fermi-arc type surface states may play a role in the edge photocurrent response although the contribution of these states requires further investigations. The work resolves the photocurrent response under different symmetry conditions of the edge and imply the important roles of the edge or the surface in the photo response of

topological semimetals. We note the edge photocurrent response provides a charge separation mechanism for photosensing over broad wavelength range and it is quite universal and applicable to a wide class of quantum materials with similar symmetries. This finding enables charge separation through the engineering of edge and surface in quantum materials, especially that in topological semimetals.

Methods

Device fabrication. The WTe₂ flakes were mechanical exfoliated onto a silicon substrate with a 285-nm oxide layer. Edges of different fracture directions were formed randomly during the mechanical exfoliation process. The electrode was patterned by e-beam lithography and then 5/100 nm Cr/Au were evaporated for electric contacts. For devices with relatively thin thickness, a PMMA layer was spin-coated on the device to protect the device from degradation under ambient conditions. For thick devices (>30 nm), the measurements were performed under ambient conditions.

Optoelectronic measurements. Standard SPCMs⁶ were performed in ambient conditions at room temperature using a 633 nm pulse laser with a $\sim 0.85 \mu\text{m}$ spatial resolution. The reflection signal and photocurrent were recorded simultaneously to get the reflection and photocurrent mapping. The laser beam was modulated with a mechanical chopper (2833 Hz), and the short-circuit photocurrent signal was detected with a current preamplifier and a lock-in amplifier. The sample was mounted on a three dimensional piezo stage for scanning measurement. For wavelength-dependent measurements, an acousto-optic tunable filter was used to select the desired wavelength from white light supercontinuum output of YSL Photonics laser (Model number SC-Pro, 4.5 MHz, 100 ps, 450–2400 nm). The laser was focused on the same spot of the device by a 100 \times NIR objective. For 4 μm and 10.6 μm response measurement, two continuum wave quantum cascade lasers (QCL) were used. The lasers were focused on the sample by a 40 \times reflective objective (NA = 0.5), and the light spot size was estimated to be 10 μm for 4- μm QCL and 20 μm for 10.6- μm QCL, evaluated from a scanning reflection image on the sample and electrode.

Data availability

The source data underlying Figs. 1d, e, 2b, d, f, g, h, and 4b, c, e, f, g, h are provided as a Source Data file [<https://doi.org/10.6084/m9.figshare.10303436>]. Other data is available from the corresponding author upon reasonable request.

Received: 9 July 2019; Accepted: 21 November 2019;

Published online: 16 December 2019

References

- Xia, F., Mueller, T., Lin, Y.-m., Valdes-Garcia, A. & Avouris, P. Ultrafast graphene photodetector. *Nat. Nanotechnol.* **4**, 839–843 (2009).
- Carlson, D. E. & Wronski, C. R. Amorphous silicon solar cell. *Appl. Phys. Lett.* **28**, 671–673 (1976).
- Linic, S., Christopher, P. & Ingram, D. B. Plasmonic-metal nanostructures for efficient conversion of solar to chemical energy. *Nat. Mater.* **10**, 911–921 (2011).
- Sun, D. et al. Ultrafast hot-carrier-dominated photocurrent in graphene. *Nat. Nanotechnol.* **7**, 114–118 (2012).
- Yu, W. J. et al. Highly efficient gate-tunable photocurrent generation in vertical heterostructures of layered materials. *Nat. Nanotechnol.* **8**, 952–958 (2013).
- Xu, X., Gabor, N. M., Alden, J. S., van der Zande, A. M. & McEuen, P. L. Photo-thermoelectric effect at a graphene interface junction. *Nano Lett.* **10**, 562–566 (2009).
- Wang, Q. et al. Ultrafast broadband photodetectors based on three-dimensional Dirac semimetal Cd_3As_2 . *Nano Lett.* **17**, 834–841 (2017).
- Koppens, F. H. L. et al. Photodetectors based on graphene, other two-dimensional materials and hybrid systems. *Nat. Nanotechnol.* **9**, 780–793 (2014).
- Sipe, J. E. & Shkrebti, A. I. Second-order optical response in semiconductors. *Phys. Rev. B* **61**, 5337–5352 (2000).
- Kraut, W. & von Baltz, R. Anomalous bulk photovoltaic effect in ferroelectrics: a quadratic response theory. *Phys. Rev. B* **19**, 1548–1554 (1979).
- von Baltz, R. & Kraut, W. Theory of the bulk photovoltaic effect in pure crystals. *Phys. Rev. B* **23**, 5590–5596 (1981).
- Glass, A. M., Linde, D. v. d. & Negran, T. J. Highlightic effect in pure crystals. dratic response theory. ene interface₃. *Appl. Phys. Lett.* **25**, 233–235 (1974).
- Koch, W. T. H., Munser, R., Ruppel, W. & Würfel, P. Bulk photovoltaic effect in BaTiO_3 . *Solid State Commun.* **17**, 847–850 (1975).
- Wan, X., Turner, A. M., Vishwanath, A. & Savrasov, S. Y. Topological semimetal and Fermi-arc surface states in the electronic structure of pyrochlore iridates. *Phys. Rev. B* **83**, 205101 (2011).
- Lv, B. et al. Experimental discovery of Weyl semimetal TaAs. *Phys. Rev. X* **5**, 031013 (2015).
- Weng, H., Fang, C., Fang, Z., Bernevig, B. A. & Dai, X. Weyl semimetal phase in noncentrosymmetric transition-metal monophosphides. *Phys. Rev. X* **5**, 011029 (2015).
- Xu, S.-Y. et al. Discovery of a Weyl fermion semimetal and topological Fermi arcs. *Science* **349**, 613–617 (2015).
- Ma, Q. et al. Direct optical detection of Weyl fermion chirality in a topological semimetal. *Nat. Phys.* **13**, 842–847 (2017).
- Chan, C.-K., Lindner, N. H., Refael, G. & Lee, P. A. Photocurrents in Weyl semimetals. *Phys. Rev. B* **95**, 041104 (2017).
- Nagaosa, N. & Morimoto, T. Concept of quantum geometry in optoelectronic processes in solids: application to solar cells. *Adv. Mater.* **29**, 1603345 (2017).
- Morimoto, T. & Nagaosa, N. Topological nature of nonlinear optical effects in solids. *Sci. Adv.* **2**, 1501524 (2016).
- Xu Yang, K. B., Ying Ran. Divergent bulk photovoltaic effect in Weyl semimetals. Preprint at <https://arxiv.org/abs/1712.09363> (2017).
- Zhang, Y. et al. Photogalvanic effect in Weyl semimetals from first principles. *Phys. Rev. B* **97**, 241118 (2018).
- Osterhoudt, G. B. et al. Colossal mid-infrared bulk photovoltaic effect in a type-I Weyl semimetal. *Nat. Mater.* **18**, 471–475 (2019).
- Lim, S., Rajamathi, C. R., Süß, V., Felsner, C. & Kapitulnik, A. Temperature-induced inversion of the spin-photogalvanic effect in WTe_2 and MoTe_2 . *Phys. Rev. B* **98**, 121301 (2018).
- Ma, J. et al. Nonlinear photoresponse of type-II Weyl semimetals. *Nat. Mater.* **18**, 476–481 (2019).
- Soluyanov, A. A. et al. Type-II Weyl semimetals. *Nature* **527**, 495–498 (2015).
- Lai, J. et al. Anisotropic broadband photoresponse of layered type-II Weyl semimetal MoTe_2 . *Adv. Mater.* **30**, 1707152 (2018).
- Song, J. C. W. & Levitov, L. S. Shockley-Ramo theorem and long-range photocurrent response in gapless materials. *Phys. Rev. B* **90**, 075415 (2014).

- Cao, H. et al. Photo-Nernst current in graphene. *Nat. Phys.* **12**, 236–239 (2015).
- Guo, Y. et al. Distinctive in-plane cleavage behaviors of two-dimensional layered materials. *ACS Nano* **10**, 8980–8988 (2016).
- Song, Q. et al. The in-plane anisotropy of WTe_2 investigated by angle-dependent and polarized Raman spectroscopy. *Sci. Rep.* **6**, 29254 (2016).
- Dresselhaus, M. S., Dresselhaus, G. & Jorio, A. *Group Theory, Application to the Physics of Condensed Matter*. (Springer-Verlag Berlin Heidelberg, 2008).
- Xu, S.-Y. et al. Electrically switchable Berry curvature dipole in the monolayer topological insulator WTe_2 . *Nat. Phys.* **14**, 900–906 (2018).
- Ma, Q. et al. Observation of the nonlinear Hall effect under time-reversal-symmetric conditions. *Nature* **565**, 337–342 (2019).
- Cook, A. M. et al. Design principles for shift current photovoltaics. *Nat. Commun.* **8**, 14176 (2017).
- Bergholtz, E. J., Liu, Z., Trescher, M., Moessner, R. & Udagawa, M. Topology and interactions in a frustrated slab: tuning from Weyl semimetals to $C > 1$ fractional Chern insulators. *Phys. Rev. Lett.* **114**, 016806 (2015).
- Bovenzi, N., Breitzkreiz, M., O'Brien, T. E., Tworzydło, J. & Beenakker, C. W. J. Twisted Fermi surface of a thin-film Weyl semimetal. *N. J. Phys.* **20**, 023023 (2018).

Acknowledgements

Q.W. acknowledge Yimeng Wang from Renmin University of China and Dr. Yilin Lu for the help in the measurement of Raman spectroscopy. This work is supported by the National Natural Science Foundation of China (NSFC Grants Nos. 11704031, 11674013, 11734003, 11574029, 91750109), the National Key R&D Program of China (Grant No. 2016YFA0300600), the Strategic Priority Research Program of Chinese Academy of Sciences (Grant No. XDB30000000), K.S. is supported by the NSF Award No. NSF-EFMA-1741618. Q.W. acknowledges the support from Beijing Institute of Technology Research Fund Program for Young Scholars. D.S. acknowledges the support from Beijing Natural Science Foundation JQ19001 and the State Key Laboratory of Precision Measurement Technology and Instruments Fund for open topics.

Author contributions

D.S. and Q.W. conceived the experiment. H.L. and D.Y. synthesized the bulk crystals under supervision from S.J. and Y.-G.S.; J.Z. and X.L. fabricated the devices under the supervision of Q.W., J.D. and J.H.C., Q.W., Y.H., J.M., and J.L. carried out the photocurrent measurements. K.S., Q.W., J.C., Y.Y., and D.S. analysis and interpret the data. M.W., J.H., and W.X. contribute to discussion of the results. Q.W., K.S., and D.S. co-wrote the paper with input from all the authors.

Competing interests

The authors declare no competing interests.

Additional information

Supplementary information is available for this paper at <https://doi.org/10.1038/s41467-019-13713-1>.

Correspondence and requests for materials should be addressed to Y.Y. or D.S.

Peer review information *Nature Communications* thanks the anonymous reviewer(s) for their contribution to the peer review of this work.

Reprints and permission information is available at <http://www.nature.com/reprints>

Publisher's note Springer Nature remains neutral with regard to jurisdictional claims in published maps and institutional affiliations.



Open Access This article is licensed under a Creative Commons Attribution 4.0 International License, which permits use, sharing, adaptation, distribution and reproduction in any medium or format, as long as you give appropriate credit to the original author(s) and the source, provide a link to the Creative Commons license, and indicate if changes were made. The images or other third party material in this article are included in the article's Creative Commons license, unless indicated otherwise in a credit line to the material. If material is not included in the article's Creative Commons license and your intended use is not permitted by statutory regulation or exceeds the permitted use, you will need to obtain permission directly from the copyright holder. To view a copy of this license, visit <http://creativecommons.org/licenses/by/4.0/>.

© The Author(s) 2019