

Role of deep sponge grounds in the Mediterranean Sea: a case study in southern Italy

Marzia Bo · Marco Bertolino · Giorgio Bavestrello ·
Simonepietro Canese · Michela Giusti · Michela Angiolillo ·
Maurizio Pansini · Marco Taviani

Received: 23 February 2011 / Accepted: 19 November 2011 / Published online: 7 December 2011
© Springer Science+Business Media B.V. 2011

Abstract The Mediterranean spongofauna is relatively well-known for habitats shallower than 100 m, but, differently from oceanic basins, information upon diversity and functional role of sponge grounds inhabiting deep environments is much more fragmentary. Aims of this article are to characterize through ROV image analysis the population structure of the sponge assemblages found in two deep habitats of the Mediterranean Sea and to test their structuring role, mainly focusing on the demosponges *Pachastrella monilifera* Schmidt, 1868 and *Poecillastra compressa* (Bowerbank, 1866). In both study sites, the two target sponge species constitute a mixed assemblage. In the

Amendolara Bank (Ionian Sea), where *P. compressa* is the most abundant species, sponges extend on a peculiar tabular bedrock between 120 and 180 m depth with an average total abundance of 7.3 ± 1.1 specimens m^{-2} (approximately 230 gWW m^{-2} of biomass). In contrast, the deeper assemblage of Bari Canyon (average total abundance 10.0 ± 0.7 specimens m^{-2} , approximately 315 gWW m^{-2} of biomass), located in the southwestern Adriatic Sea between 380 and 500 m depth, is dominated by *P. monilifera* mixed with living colonies of the scleractinian *Madrepora oculata* Linnaeus, 1758, the latter showing a total biomass comparable to that of sponges (386 gWW m^{-2}). Due to their erect growth habit, these sponges contribute to create complex three-dimensional habitats in otherwise homogenous environments exposed to high sedimentation rates and attract numerous species of mobile invertebrates (mainly echinoderms) and fish. Sponges themselves may represent a secondary substrate for a specialized associated fauna, such as zoanthids. As demonstrated in oceanic environments sponge beds support also in the Mediterranean Sea locally rich biodiversity levels. Sponges emerge also as important elements of benthic–pelagic coupling in these deep habitats. In fact, while exploiting the suspended organic matter, about 20% of the Bari sponge assemblage is also severely affected by cidarid sea urchin grazing, responsible to cause visible damages to the sponge tissues (an average of 12.1 ± 1.8 gWW of individual biomass removed by grazing). Hence, in deep-sea ecosystems, not only the coral habitats, but also the grounds of massive sponges

Guest editors: M. Maldonado, X. Turon, M. A. Becerro & M. J. Uriz / Ancient animals, new challenges: developments in sponge research

M. Bo (✉) · M. Bertolino · G. Bavestrello
Dip. Scienze della Vita e dell’Ambiente, Università
Politecnica delle Marche, Via Brecce Bianche, 60131
Ancona, Italy
e-mail: m.bo@univpm.it

S. Canese · M. Giusti · M. Angiolillo
ISPRA, Via Casalotti 300, 00166 Rome, Italy

M. Pansini
Dip. per lo Studio del Territorio e delle sue Risorse,
Università degli Studi di Genova, Corso Europa 26, 16132
Genoa, Italy

M. Taviani
ISMAR-CNR, Via Gobetti 101, 40129 Bologna, Italy

represent important biodiversity reservoirs and contribute to the trophic recycling of organic matter.

Keywords Deep benthos · Porifera · Mediterranean Sea · Biodiversity · Pelagic–benthic coupling

Introduction

The Porifera fauna of the Mediterranean Sea is one of the best documented in the world although this holds particularly true only for habitats shallower than 100 m. In fact, information on sponges inhabiting deeper settings is scant, fragmentary and sparse in the literature (Babic, 1922; Topsent, 1928; Vacelet, 1960, 1961, 1969, 1996; Uriz, 1981, 1983, 1984; Uriz & Bibiloni, 1984; Zibrowius, 1985; Pansini, 1987; Uriz & Rosell, 1990; Pansini & Musso, 1991; Maldonado, 1992; Voultziadou-Koukouras & Van Soest, 1993; Boury-Esnault et al., 1994; Ilan et al., 1994, 2003; Magnino et al., 1999; Uriz & Maldonado, 2000; Longo et al., 2002). Furthermore, most of these observations are derived from bottom sampling not deliberately targeting sponges in a systematic way. Sampling in the deep sea is often biased towards soft-bottom habitats, which are easier to sample by trawling than the less-accessible hard substrata. The first in situ observations that focused on deep sea sponges are those carried out in the Cassidaigne Canyon, near Marseille, by Vacelet (1969) in a manned submarine (*Soucoupe plongeante Cousteau*: SP 300). In the last few years, the exploration of the deep sea realm, due to the implementation of non-invasive techniques such as Remotely Operated Vehicles (ROV), increased steadily. Using this technique, important new information were obtained on Mediterranean deep sea inhabitants, including sponges (Freiwald et al., 2009; Taviani & Angeletti, 2009; Beuck et al., 2010; Mastrototaro et al., 2010; Vertino et al., 2010; Bo et al., 2011a).

The term sponge ground is commonly accepted as referring to the case of sponges dominating in size and abundance, and also often by the accumulation of skeletal remains, the seabed (Hogg et al., 2010). They commonly occur on patchy hard substrata surrounded by unstable soft bottoms, but some species are specialized to live on sand and mud. Deep-water sponge grounds are also known to occur

in distinct areas where local environmental conditions are suitable for their, usually slow, growth (Hogg et al., 2010). Although in the Mediterranean Sea sponge beds have not been recorded so far, grey literature and fishermen bycatch indicate the existence of large sponge assemblages also for this temperate basin.

Seamounts and submarine canyons, intrinsically difficult to survey due to their rough topography and vigorous current regime, were chosen as study sites since they may host structured and diverse suspension feeders communities, in which Porifera often play a leading role (Bourcier & Zibrowius, 1973; Boehlert & Genin, 1987; Tunesi et al., 2001; Samadi et al., 2007; Freiwald et al., 2009; Clark et al., 2010; Hogg et al., 2010). In this context, the Amendolara Bank (Ionian Sea) (Fig. 1) has been extensively investigated in the past on its shallow euphotic top resulting in substantial information on the benthic coralligenous biota (Rossi & Colantoni, 1976; Panetta et al., 1985; Perrone, 1985; Strusi et al., 1985; D'Addabbo Gallo et al., 1987; Cecere & Perrone, 1988; Di Geronimo et al., 1998). On the contrary, no precise documentation was given for the deep mesophotic assemblages below 100 m depth, characterized by sparse rocks surrounded by muddy bottoms, suitable for the settling of deep suspension feeders such as sponges. The Bari Canyon (southwestern Adriatic Sea: Fig. 1), instead, is known to be an optimal area where to investigate the complex interplay between topographic setting, hydrologic regime and the biological response of benthic communities (Trincardi et al., 2007; Bianchelli et al., 2008). Indeed, recently, lush deep-water coral communities dominated by the frame-building scleractinians *Madrepora oculata* Linnaeus, 1758 and *Lophelia pertusa* Linnaeus, 1758, often intimately associated with sponges and serpulids, have been documented from the steep flanks and other hard-bottom settings in the canyon system between 350 and 650 m depth (Freiwald et al., 2009). As the nearby deep water coral province of Santa Maria di Leuca (Taviani et al., 2005a, b; Longo et al., 2005; Freiwald et al., 2009; Mastrototaro et al., 2010; Rosso et al., 2010, with references therein), the Bari Canyon represents an important biodiversity hotspot dominated by suspension feeders, mainly corals and sponges.

Fig. 1 Locations of the study areas (black dots) in the southern Italian seas: Amendolara Bank (Ionian Sea) and Bari Canyon (southern Adriatic Sea)



The aims of this study are to characterize the population structure and to test the structuring role of the sponge assemblages in deep habitats of the Mediterranean Sea mainly focusing on the two demosponges, *Pachastrella monilifera* Schmidt, 1868 and *Poecillastra compressa* (Bowerbank, 1866).

Materials and methods

Data collection and analyses

Data here presented were recorded during two ROV campaigns performed in August 2009 and July 2010 on board R/V *Astrea* of ISPRA (MoBioMarCal project) and R/V *Urania* of CNR (E.U. HERMIONE project) for the Amendolara Bank and the Bari Canyon, respectively. The ROV *Pollux* was equipped with a digital camera (Nikon D80, 10 megapixels), an underwater strobe (Nikon SB 400), and a high

definition video camera (Sony HDR-HC7). In addition, it was equipped with a depth sensor, a compass, and two parallel laser beams providing a 10 cm scale for measuring the size of the sampled bottom areas.

Eleven adult sponges, 6 orange and 5 white, were collected from the Amendolara Bank with the ROV grabbers for taxonomic identification. Samples were fixed on-board in 4% formaldehyde in filtered sea water and then preserved in 70% ethanol. Spicule complement and skeletal architecture were examined under light microscopy following Hooper (2000). For SEM analyses, dissociated spicules were transferred onto stubs and sputter coated with gold then observed under a Philips XL20 SEM. No specimens were collected in the Bari Canyon and the species identification was based on the similarity with the Amendolara samples and on the base of a previous taxonomic work conducted in the sponge-white coral habitat of S. Maria Di Leuca (Longo et al., 2005).

In total, 50 and 135 photographs have been analyzed with areas comprised between 0.5 and 3 m², respectively, for the Amendolara Bank (54 m² of total explored surface) and the Bari Canyon (128 m² of total explored surface). Images were analyzed by ImageJ 1.33 software in order to record both abundance (\pm SE, standard error) and size (height \times width in cm) of the sponges counted in the ROV images (211 measures in the Amendolara Bank and 770 in the Bari Canyon). Data were used to depict the community structure in terms of species identification, average abundance, bathymetric distribution, size-frequency distribution and percentage of sea urchin bites. Observations on the coral component (in the Bari Canyon) and on the associated organisms were also recorded for each analyzed image.

To depict the sponge biomass contribution in the two studied assemblages, the average wet weights (WW, expressed as g cm⁻² \pm SE) for the two studied species (0.33 ± 0.02 and 0.30 ± 0.05 g cm⁻², respectively, for *Pachastrella monilifera* and *Poecillastra compressa*) were calculated by weighting the collected specimens. With the same procedure, the biomass of the coral *Madrepora oculata* (0.73 ± 0.01 g cm⁻²) was calculated for comparison. From the areas of the specimens, measured from ROV images with ImageJ software, the average individual biomass and the total biomass for each species and for each site were obtained. With the same method, the area and biomass grazed.

Study sites

Amendolara Bank is located on the western side of the Gulf of Taranto, in the northern Ionian Sea, about 10 miles offshore Corigliano Calabro (Fig. 1). It is a seamount with an almost ellipsoidal surface extending for 31 km² from 200 to 26 m depth (Rossi & Colantoni, 1976; Strusi et al., 1985; Di Geronimo et al., 1998; Romagnoli, 2004). Its top is quite rugged because of peaks, depressions and ridges (Rossi & Colantoni, 1976; Cecere & Perrone, 1988; Ceramicola et al., 2008). The bathymetric profile of the bank shows two shallow peaks, then, below 50 m depth, the bank is connected with a steep NW side to the flat continental platform, while the other flanks gently dip along the continental slope (Rossi & Colantoni, 1976; Rossi & Gabbianelli, 1978; Romagnoli, 2004). The flanks of the Amendolara Bank are characterized by

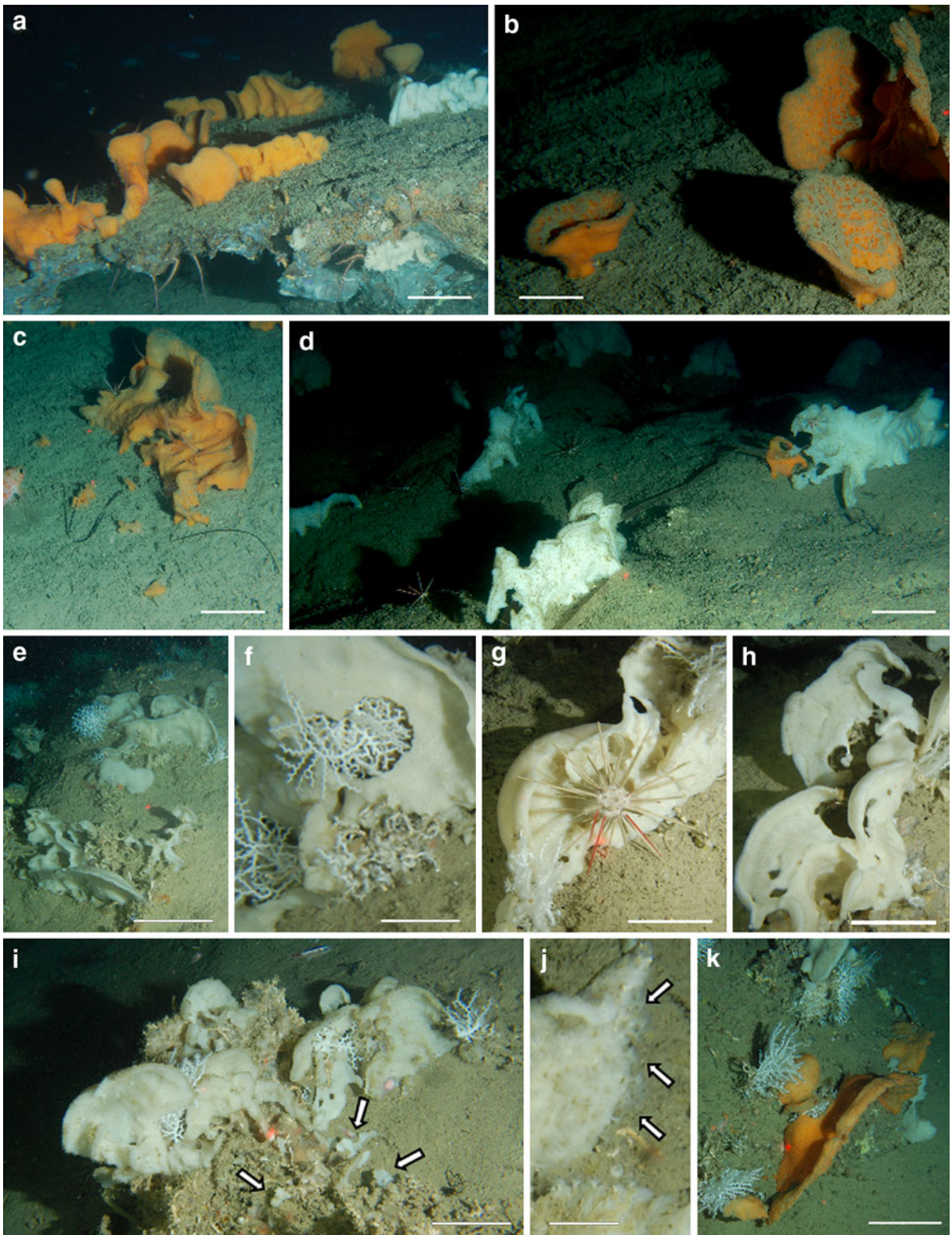
frequent slides and by zones with gas emissions along the active tectonic structures (Ceramicola et al., 2008). The top of the mount is sediment-starved and characterized by the production and accumulation of skeletal hash and finer bioclastic sediment. Coralligenous bioconcretioning, mainly composed of algae, bryozoans, sponges and interspersed coarse sediments, occurs from the top to about 50 m depth (Cecere & Perrone, 1988). Coarse sediments, becoming progressively finer with depth, are then replaced by mud below 80 m depth (Strusi et al., 1985). Annual oceanographic measurements document water transparency from about 10 to 16 m, temperature from 13.3 to 18.4°C around 100 m depth (Cecere & Perrone, 1988), and a predominant NS-flowing current (Grancini et al., 1969). More in detail, the site explored during the ROV survey is located on the bank SE flank at 39°50'17"N–16°48'52"E between 120–180 m. Here, the area is characterized by a 'tabular' bedrock interrupted at places by rounded peaks draped by muddy sediment as for the adjacent sea bottom.

Bari Canyon is a remarkable, 30-km long and 10-km wide, WE-trending structure cutting the Apulian outer shelf (Fig. 1). It is characterized by multiple heads and two main branches (Trincardi et al., 2007). The northern branch is a narrow, straight incision with a slight steepness. The other branch is wider, asymmetric, U-shaped with a very steep southern wall and a more complex northern side (Turchetto et al., 2007). The Bari Canyon represents a sort of channel through which suspended fine sediment generated by the Po River (the primary fluvial system entering the Adriatic Sea) is conveyed into the deep southern Adriatic basin through cascading water masses (Ridente et al., 2007; Trincardi et al., 2007; Turchetto et al., 2007). It also conveys nutrients representing an important source of food nourishing the deep communities (Bianchelli et al., 2008). The explored area during our ROV survey is located at 41°17'15"N–17°16'38"E, between 380 and 500 m depth, along the canyon's southern branch.

Results

The studied species (Fig. 2)

Pachastrella monilifera and *Poecillastra compressa* are two demosponge species belonging to the Order



◀ **Fig. 2** ROV exploration of the sponge assemblages. **a–d** Amendolara Bank (120–180 m depth). **a** *Poecillastra compressa* and *Pachastrella monilifera* colonizing the upper side of a tabular bedrock. Below the rock, in the sheltered side, are visible numerous encrusting sponges and ophiuroids. **b** Cup-like and fan-like shaped specimens of *P. compressa* entrapping in a network the thin sediment over their surface. **c** Plate-like adult specimen of *P. compressa* surrounded by numerous juveniles visible on the muddy bottom. **d** Plate-like specimens of *P. monilifera* found on the detrital bottom. Cidarid sea urchins are visible between the specimens. **e–k** Bari Canyon (380–500 m depth). **e** Assemblage of fan-like specimens of *P. monilifera* and *Madrepora oculata*. **f** Close sponge-white coral association. **g** Cidarid sea urchin grazing sponge tissues. **h** Traces of the grazing activity of sea urchins on the tissues of *P. monilifera*. **i** Adult specimens of *P. monilifera* surrounded by juveniles (white arrows) growing on dead coral skeletons. **j** Zoanthid polyps (white arrows) growing on a specimen of *P. monilifera*. **k** Specimens of *P. compressa* in the assemblage. Scale bar **e** 20 cm; **a–d, h–i, k** 10 cm; **f–g, j** 3 cm

Astrophorida sharing a great morphological and dimensional plasticity, which allow them to grow in a wide variety of different environments and on several types of substrate. Usually, *P. monilifera* is described as massive or cup-like in shape, and generally white in colour, while *P. compressa* is reported as plate- or cup-like, and orange in colour when observed alive (Uriz, 1978, 1982; present study). The latter has been reported also white or grey, but exsiccation and fixation may cause colour loss, as observed in our samples.

The spicular complements were compared with literature data (Maldonado, 2002) to verify the taxonomic identification of the samples. On the base of the spicular complement, all white specimens collected on the Amendolara Bank are attributed to *P. monilifera* (Fig. 2a, d), while all orange specimens are described as *P. compressa* (Fig. 2a–c). Colour, therefore, represented a good identification character for both species in the analysis of the studied ROV images.

Average sizes of the sponges are very similar both between the two species and between the two sites. They range between $6.9\text{--}7.2 \pm 0.2\text{--}0.6 \times 10.3\text{--}11.7 \pm 0.3\text{--}1.0$ cm for *P. monilifera* and between $8.1\text{--}8.2 \pm 1.2\text{--}0.4 \times 11.9\text{--}12.6 \pm 0.7\text{--}2.3$ cm for *P. compressa*, for Amendolara Bank and Bari Canyon, respectively. Specimens of both species grow more slowly in height than in width. The equations describing the ratio between width and height of the specimens of increasing size are very similar in both

species ($y = 1.28x + 1.24$ and $y = 1.38x + 0.77$ for *P. compressa* from the Amendolara Bank and *P. monilifera* from the Bari Canyon, respectively) (Fig. 3a, b). The size-frequency distributions of height and width of both species are unimodal with a mode in the classes 4–6 cm both for height and width and a long tail of rare large specimens (Fig. 3c–f).

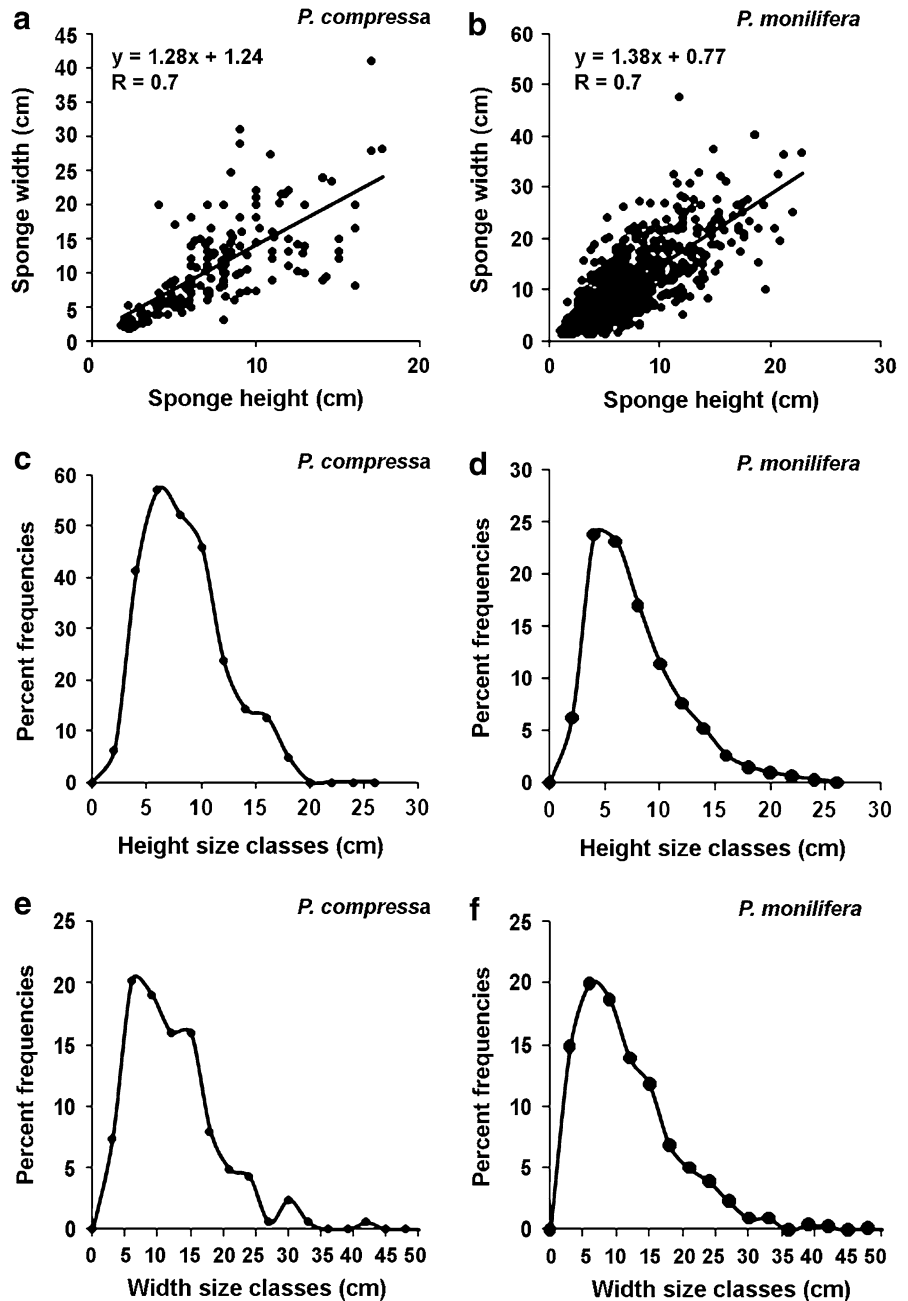
In both sites, fan-shaped sponges may show the same orientation on large portions of the sea floor (Fig. 2a, d, e, i), and this habit, in the assemblage of Bari Canyon, is shared also by the coral colonies. In addition, due to silting, especially *P. compressa* shows a characteristic network of sediment deposited on its mucous ectosoma, around the oscula (Fig. 2b).

Large groups of close fan-like specimens (up to 10 individuals) of both species are commonly observed on the sea bottom. In both sites, younger specimens are found surrounding adults on the hard substrates or on the dead coral colonies (Fig. 2c, i). As soon as they grow in height, both species develop a fan-like shape (Fig. 2). However, *P. compressa* shows thicker and more regular laminae that are able to fold up forming cup-shaped specimens (Fig. 2a, b), while *P. monilifera* generally forms thinner laminae with a folded upper border (Fig. 2d, h).

Abundance, biomass and bathymetric distribution

Pachastrella monilifera and *Poecillastra compressa* are the major sponge components in the benthic assemblages settling the deepest reaches of the Amendolara Bank (Fig. 2a–d) and the Bari Canyon (Fig. 2e–k). In the Amendolara Bank, the most abundant species is *P. compressa* (70% of the 270 observed sponges), while in the Bari Canyon *P. monilifera* is dominant (97.2% of the 1,043 observed sponges). The total average sponge abundance is slightly lower in the Amendolara Bank respect to the Bari Canyon (7.3 ± 1.1 and 10.0 ± 0.7 specimens m^{-2} , respectively) (Fig. 3). The Amendolara assemblage shows a patchy distribution, with elevated rocky areas characterized by high sponge densities (up to about 27 specimens m^{-2}) interspersed with silted hard substrates deprived of visible epifauna. The assemblage is mixed, with both species contributing to the total abundance (2.6 ± 0.7 and 4.7 ± 0.9 specimens m^{-2} for *P. monilifera* and *P. compressa*, respectively) (Fig. 3). The assemblage of Bari Canyon shows very high maximal total densities (up to 50

Fig. 3 Sponge morphometry. **a, b** Ratio between width and height of *Poecillastra compressa* and *Pachastrella monilifera*. **c–f** Size-frequency distributions of height and width of the two sponge species



specimens m^{-2}) and the sponges are widely distributed over the entire explored sea ground.

In the Bari assemblage, *P. monilifera* is dominant in the entire depth range considered (9.7 ± 0.7 specimens m^{-2}), while *P. compressa* occurs more occasionally (0.2 ± 0.07 specimens m^{-2}) (Fig. 5). On the Amendolara Bank (Fig. 4) instead, the maximum average abundance of *P. compressa* is recorded in the first considered depth range (120–140 m) (8.6 ± 1.6

specimens m^{-2}), then it decreases towards 1.9 ± 1.0 specimens m^{-2} in the deepest depth range (160–180 m). *P. monilifera*, instead, shows its maximum abundance (4.4 ± 1.5 specimens m^{-2}) in the intermediate depth range (140–160 m). Below 180 m depth, both species become extremely rare.

The total sponges biomass contribution is 230.3 and 315.5 $gWW m^{-2}$, respectively, in the Amendolara Bank and in the Bari Canyon. In the first site,

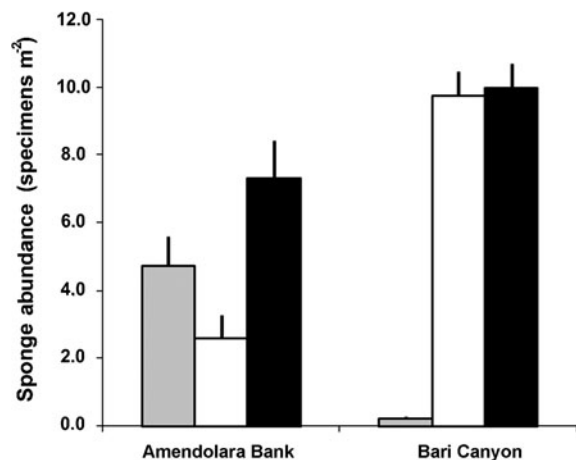


Fig. 4 Average sponge abundance distribution (specimens $m^{-2} \pm SE$) of the studied sponge assemblages, Amendolara Bank and Bari Canyon. Grey bars: *Poecillastra compressa*, white bars: *Pachastrella monilifera*, black bars: all sponges

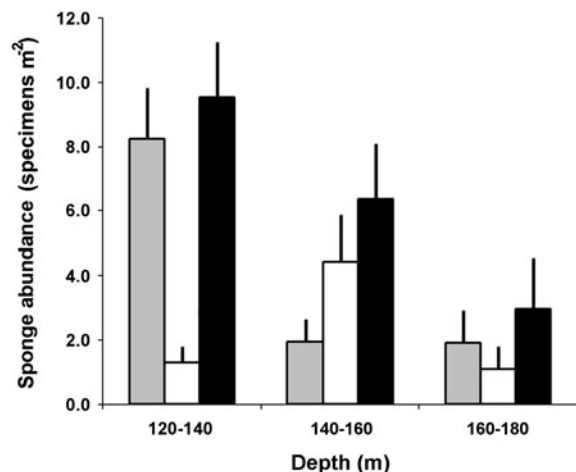


Fig. 5 Average sponge abundance at different depths (specimens $m^{-2} \pm SE$) of the Amendolara Bank sponge assemblage. Grey bars: *Poecillastra compressa*, white bars: *Pachastrella monilifera*, black bars: all sponges

P. monilifera occurs with a biomass of 90.7 gWW m^{-2} and *P. compressa* with 132.6 gWW m^{-2} , while, in the second site, they occur with a biomass of 338.5 and 5.6 gWW m^{-2} , respectively.

Functional role of deep sponges

In both under study sites, the sponge grounds, comprehensive of other occasional massive and encrusting sponges species, represent centres of attraction of

numerous other species. In the Amendolara Bank, sponges grow in patches, both on the rocks sparse on the muddy sea floor and on the tabular, heavily silted rocks, elevating about 1 m from the bottom. In particular, on the latter, the massive sponges occupy only the upper side of the rocks (Fig. 2a), together with other occasional species tentatively attributed to the genera *Mycale* and *Haliclona* and small colonies of the scleractinian *Dendrophyllia cornigera* (Lamarck, 1816). The sheltered, lower side of rocks, often featuring cavities and crevices, is occupied by the encrusting blue sponge *Hamacantha (Vomerula) falcula* (Bowerbank, 1874) and by other unidentified encrusting and massive sponges. Many other species are found living in this benthic assemblage, such as octopuses, polychaetes and echinoderms, for examples, cidarids, *Peltaster placenta* (Müller-Troschel, 1842) and numerous ophiuroids (Fig. 2a). Several fish species are observed in this habitat, such as *Helicolenus dactylopterus* (Delaroche, 1809), *Anthias anthias* (Linnaeus, 1758), *Callanthias ruber* (Rafinesque, 1810), *Merluccius merluccius* (Linnaeus, 1758), *Phycis blennoides* (Brünnich, 1768), *Aulopus filamentosus* (Bloch, 1792), *Macroramphosus scolopax* (Linnaeus, 1758) and *Scorpaena* sp.

In the Bari Canyon, the sponge assemblage settles on hard substrates and often is intimately associated with living *Madrepora oculata* colonies (occurring with an abundance of 4.1 ± 0.3 colonies m^{-2} , that corresponds to a biomass of 386 gWW m^{-2}) (Fig. 2e–k). At places, branches of *M. oculata* emerge from the holes and crevices of the sponge tissues (Fig. 2f). Here, *P. monilifera* and *P. compressa* show a peculiar association with a small white zoanthid, which resembles *Parazoanthus anguicomus* (Norman, 1868), although no precise taxonomic identification was possible in absence of actual samples was gathered. Zoanthids, usually observed along the outer margin of their host, appear embedded in the sponge ectosome, emerging with the distal portion of the column (Fig. 2j). Other massive and encrusting sponges (such as *Haliclona* sp.) are more rarely observed. The megabenthic community is composed of the species commonly associated with white corals (such as the solitary scleractinian *Desmophyllum dianthus* (Esper, 1794) and the commensal polychaete *Eunice norvegica* (Linnaeus, 1767)), hydroids, ceriantharians, colonial scleractinians such as *D. cornigera*, polychaetes [such as *Filograna* sp. and *Sabella pavonina*

(Savigny, 1818)], the echiurid *Bonellia viridis* (Rolando, 1821), crustaceans (such as *Munida* sp. and various shrimps), ascidians and echinoderms [such as cidarids, *Echinus melo* (Lamarck, 1816) and *P. placenta*]. Very few fish species are observed in the Bari Canyon assemblage: the rare *Gaidropsarus granti* (Regan, 1903) (Canese, pers. observ.), then *P. blennoides*, *A. filamentosus*, and *Pagellus bogaraveo* (Brünnich, 1768), the latter however, particularly abundant.

Sponges represent also a major source of organic carbon for some of the most abundant vagile organisms moving both on the soft bottom surrounding the rocks covered by the sponges and on the sponges themselves, namely cidarid sea urchins. At both sites, numerous specimens of *P. monilifera* and *P. compressa* show traces of predation ranging from ovoid erosions crossing the entire thickness of the sponge tissues to losses of large lobes of sponges. At the end of this process only some fragments of the sponge remain alive (Fig. 2d, f–i). Both species are affected by grazing, especially *P. monilifera*. In particular, in the Bari Canyon, where this species is dominant, the average percentage of sponges showing traces of grazing is $20.2 \pm 2\%$. On average, the measured sponges may lose up to 70% of their surface because of grazing, while 12.1 ± 1.8 gWW is the average biomass loss caused by sea urchin predation (with a maximum of 56.3 gWW for a single specimen).

Discussion and conclusion

Sponges may represent one of the most important components of deep megabenthic communities, both in the oceanic environments (Rice et al., 1990; Conway et al., 1991; Klitgaard, 1995; Rogers, 1999; Gerdes et al., 2008; Hogg et al., 2010) and in semi-enclosed basins, such as the Mediterranean Sea (Vacelet, 1969; Pulitzer-Finali, 1983; Magnino et al., 1999; Longo et al., 2005; Bo et al., 2011b). Differently from corals, the biodiversity and the ecological role of sponges in deep assemblages is far less appreciated, probably as a result of the difficulty to classify species only through ROV images or to collect small or encrusting specimens.

Among the most interesting sponge grounds described so far, vast Antarctic shelf sponge assemblages are noticeable. They occur between 50 and 350 m depth and are mainly constituted of hexactinellids reaching

impressive values of biomass (Barthel & Gutt, 1992; Gerdes et al., 2008). Other massive glass sponge reefs are found around 140–300 m depth along the northwestern continental margin of North America developing in areas of high sedimentation (Conway et al., 1991). Along the North Atlantic Ocean shelf edge, sponge grounds are mainly constituted by several demosponge species found at 600–1,000 depth (Hogg et al., 2010), while dense populations of the hexactinellid *Pheronema carpenneri* (Thomson, 1869) were discovered along the Mid-Atlantic Ridge, off Morocco and in the western Mediterranean basin between 500 and 1,600 m depth. This species is able to create grounds extending for kilometres and reaching in certain areas densities up to 6 specimens m^{-2} (Rice et al., 1990; Barthel, 1996). The existence of Mediterranean sponge assemblages, was recently reported from the white coral banks off Santa Maria di Leuca (Ionian sea) (Longo et al., 2005; Mastrototaro et al., 2010; Vertino et al., 2010) and also from the Bari Canyon, one of the areas here described (Freiwald et al., 2009). Finally, even if they do not constitute true sponge grounds, abundant assemblages of massive species were reported also on the rocks hosting wide mesophotic coral meadows along the Italian coast (Bo et al., 2011a). They represent the second most abundant component in these environments and generally live beneath the coral branching net, forming a sort of ground cover, exploiting the organic particulated matter sinking from above (Bo et al., 2011c).

This study represents the first description of dense paucispecific assemblages of *Poecillastra compressa* and *Pachastrella monilifera*, falling in the definition of sponge grounds in terms of abundance, extension, patchy distribution and ecological role (Hogg et al., 2010).

Despite the numerous literature records of these species, no ecological data exist on such dense assemblages, neither for the Mediterranean Sea nor for the Atlantic basin. Based also on unpublished records of these species in the Tyrrhenian Sea and on fishermen bycatch, the described assemblages may represent typical Mediterranean sponge grounds. The two studied sites differ in terms of composition of the benthic community, being the Amendolara Bank exclusively characterized by sponges (particularly *P. compressa*), while the Bari Canyon hosts a mixed assemblage of sponges (mainly *P. monilifera*) and *Madrepora oculata*. It is hypothesised that these assemblages are found in sites characterized by locally

accelerated currents, enhancing seabed food particle supply (Duineveld et al., 2007; Carlier et al., 2009), therefore favouring suspension feeders, such as sponges. In both sites studied during this research, the presence of unidirectional bottom currents is hypothesised on the base of the uniform orientation of the fan-shaped sponges and corals (Wainwright & Koehl, 1976; Warner, 1977; McDonald et al., 2003). Intensity of current is, however, moderate as supposed on the base of the heavy siltation evident on the specimens. In terms of biomass, the Bari assemblage shows the highest value. The oceanographic regime of the canyon together with the co-occurrence of corals, probably favour in this site higher levels of particulated organic matter, hence a more abundant community of suspension feeders. With respect to the Atlantic sponge ground described for the Porcupine Bank (an average of 1.5 specimens m^{-2} of *P. carpenteri*) (Rice et al., 1990), the Bari Canyon shows comparable values of biomass (315 and 372 gWW m^{-2} , respectively, for the Mediterranean and Atlantic site), but obviously no reef structure.

The co-occurrence of the two species seems a common feature. Both species show an Atlantic–Mediterranean overlapped distribution. According to Maldonado (2002) and Cardenas (2010), in fact, records of these taxa from outside this region have to be attributed to close congeneric species.

P. monilifera was recorded along the entire Tyrrhenian and Ionian Italian coastlines, from Liguria to Apulia, and along the Sicilian coasts, with the exception of the Strait of Messina, but including the Sicilian Channel (Pansini & Longo, 2003, 2008; Martinelli et al., 2007). Records are known also from the entire western Adriatic coastline, from Otranto to Istria. Concerning the rest of the Mediterranean Sea, the species was reported from the Gulf of Lions, from Catalunya and Balearic Islands, Alboran Sea and Algerian basin (Pansini & Longo, 2003, 2008). In the Atlantic Ocean, the species shows an affinity for the temperate-cold fauna, being present in the coasts of Ireland, Azores, Canaries, coasts of Marocco and South Africa (Topsent, 1894, 1904, 1928; Ferrer Hernández, 1914; Stephens, 1915; Burton, 1926; Levi, 1960, 1967; Uriz, 1988; Boury-Esnault et al., 1994). Along the Italian peninsula *P. compressa* was reported for the Tyrrhenian Sea, including Sardinia and Corsica, the Ionian and Adriatic coast (Pansini & Longo, 2003, 2008; Martinelli et al., 2007). In the rest of the

Mediterranean Sea, the sponge was reported in the same places as *P. monilifera*, while, concerning the Atlantic Ocean, it shows a higher affinity for the boreal fauna, having been recorded along the South African coast, Canaries, Azores, Portugal, Atlantic coasts of Spain and France, coast of Ireland, United Kingdom, Norway and Iceland (Topsent, 1894, 1904, 1913, 1928; Ferrer Hernández, 1914; Stephens, 1915; Burton, 1930, 1959; Levi, 1967; Borojevic et al., 1968; Boury-Esnault et al., 1994).

The studied sites show slight differences of sponge abundance: the assemblage of Bari Canyon is more homogeneous than that of Amendolara Bank (97 and 3%, respectively, for *P. monilifera* and *P. compressa* for the Bari Canyon vs. 30 and 70% for the same species in the Amendolara Bank). Larval aggregation in a patchy rocky environment probably is among the most important factors influencing specimen distribution. In both sites, the settling of sponges is tightly connected with the presence of hard bottoms (both rocks or dead corals), therefore the species may show a variable distribution (as in the case of Amendolara Bank), with peaks of abundances alternated to areas characterized by heavy sedimentation that are not colonized.

Little information is available about the size structure of sponge populations (Turon et al., 1998). Size-frequency distributions, obtained for the two species in the studied localities, indicate unimodal trends with peaks for the intermediate size classes and long tails. This kind of trend is very common in modular organisms like sponges and corals (Linares et al., 2008; Salvati et al., 2010). We hypothesise that the sponges grow quickly to increase the filtering efficiency and to avoid the sedimentation while their maximal size is probably constrained by the friction with the current (and partially by predation). Tails are composed of few specimens, probably living in peculiar sheltered habitat, that are able to continuously grow.

Regarding their bathymetric distribution, in the explored areas, *P. compressa* seems less bathophilic than *P. monilifera* being the most abundant species in the shallower investigated depth ranges of the Amendolara Bank and almost absent in the deepest areas of the Bari Canyon. In general, both *P. compressa* and *P. monilifera* are eurybathic species commonly recorded also inside the shallow water coralligenous concretions (Bertolino, 2011). While in deep habitats (more than 50 m depth), they show a

characteristic massive fan-like or cup-like shape, in the coralligenous they are insinuating. This observation shows the importance of the coralligenous as centre of biodiversity (Ballesteros, 2006): this habitat, in fact, may host deep species characterized by a high phenotypic plasticity which allow them to live in the crevices of the concretions.

The numerous associated organisms found within the two under scrutiny communities indicate that *P. monilifera* and *P. compressa*, due to their massive, elevated morphology, may create three-dimensional habitats over homogeneous, sedimented hard bottoms, providing suitable refuges for other benthic organisms or for vagile fauna. Among the most specialized epibionts we found a small, white zoanthid tentatively attributed to the genus *Parazoanthus*, living as symbionts with both sponge species. Symbiotic relationships between sponges and zoanthids have been frequently observed in tropical and subtropical waters (Swain & Wulff, 2007; Reimer et al., 2008), from shallow to deep habitats (Beaulieu, 2001). In the Mediterranean Sea, it is well documented the recurrent relationship between *Parazoanthus axinellae* Schmidt, 1862 and several species of sponges belonging to the genus *Axinella* (Sarà & Vacelet, 1973; Previati et al., 2010), however, some species are more commonly found on hard bottom substrates (Salvati et al., 2010). As pointed out recently (Montenegro-González & Acosta, 2010), the sponge morphology is an important trait in zoanthid habitat selection. In our case, the zoanthid probably finds refuge into the tissues of the sponge and, contemporaneously, exploits the water flow from an elevated position respect to the sedimented bottom, where it was never observed.

From an ecological point of view, these sponge species may play the same engineering role held by colonial, arborescent corals in deep environments (Klitgaard & Tendal, 2004; Hogg et al., 2010; Bo et al., 2011c).

These sponges, moreover, represent an important step for the benthic–pelagic coupling in the studied assemblages. Even if many sponges avoid predation through the production of secondary metabolites (Clavico et al., 2006), the studied species are strongly exploited by the grazing activity of cidarid echinoids. The presence of sponge spicules in the gut content of these sea urchins was already observed in the Mediterranean Sea by Tortonese (1965) while several

observations on the diet of these organisms, based on sponges and corals, were made in cold-water ecosystems (Jacob et al., 2003). Previous authors (Freiwald et al., 2009; Vertino et al., 2010) reported the grazing activity of sea urchins on the coral component of the Bari assemblage, suggesting that these grazers may represent the most important biotic constraint for these communities. The grazing activity has a considerable impact also on the sponge component. We have estimated, in fact, that about 1/5 of the sponge specimens living in the studied sites shows traces of foraging. Since cidarids are known to be widely distributed on the Mediterranean soft bottoms, it is plausible that the organic faecal pellets produced by these vagile predators are then released both within the assemblage and in its neighbourhood, fertilizing the area in the proximity of these habitats.

Due to the high local biodiversity supported by these ecosystems, to the important functional roles held by the sponge components and to their vulnerability towards trawling activities, it is strongly recommended to pursue, also for these deep habitats, protective measures, as suggested for the recently discovered mesophotic coral meadows and Atlantic sponge grounds (Hogg et al., 2010; Bo et al., 2011a).

Acknowledgements We are grateful to Masters, Crew and shipboard staff onboard R/V *Astrea* and R/V *Urania* during MoBioMarCal (August 2009) and ARCADIA (March 2010) missions, respectively. We would like to thank Dr. Sinniger (Bangor University, UK) for his suggestions concerning zoanthid taxonomy. The work in the Amendolara Bank has been conducted by ISPRA (ex ICRAM), within the project no. 327, and financed by the Calabrian Regional Council for Environment. The work undertaken through MoBioMarCal is affiliated to the European Census of Marine Life. The ROV investigation of the Bari Canyon has been partly funded by the E.U. HERMIONE program (contract number 226354) and ship-time provided by CNR. This is ISMAR-CNR, Bologna scientific contribution no. 1742

References

- Babic, K., 1922. Monactinellida und Tetractinellida des Adriatischen Meeres. Zoologische Jahrbücher, Abteilung für Systematik, Geographie und Biologie der Tiere 46: 217–302.
- Ballesteros, E., 2006. Mediterranean coralligenous assemblages: a synthesis of present knowledge. Oceanography and Marine Biology 44: 123–195.
- Barthel, D., 1996. Fish eggs and pentacrinoids in Weddell Sea hexactinellids: further examples for the structuring role of sponges in Antarctic benthic ecosystems. Polar Biology 17: 91–99.

- Barthel, D. & J. Gutt, 1992. Sponge associations in the eastern Weddell Sea. *Antarctic Science* 4: 137–150.
- Beaulieu, S. E., 2001. Life on glass houses: sponge stalk communities in the deep sea. *Marine Biology* 138: 803–817.
- Bertolino, M., 2011. Sponges of the Coralligenous Community in the Mediterranean Sea. Università Politecnica delle Marche, PhD Thesis: 1–162.
- Beuck, L., A. Freiwald & M. Taviani, 2010. Spatiotemporal bioerosion patterns in deep-water scleractinians from off Santa Maria di Leuca (Apulia, Ionian Sea). *Deep Sea Research II* 57: 458–470.
- Bianchelli, S., C. Gambi, A. Pusceddu & R. Danovaro, 2008. Trophic conditions and meiofaunal assemblages in the Bari Canyon and the adjacent open slope (Adriatic Sea). *Chemistry and Ecology* 24: 101–109.
- Bo, M., G. Bavestrello, S. Canese, M. Giusti, M. Angiolillo, C. Cerrano, E. Salvati & S. Greco, 2011a. Coral assemblages off the Calabrian Coast (South Italy) with new observations on living colonies of *Antipathes dichotoma*. *Italian Journal of Zoology* 78: 231–242.
- Bo, M., M. Bertolino, M. Borghini, M. Castellano, A. Covazzi Harriague, C. G. Di Camillo, G. P. Gasparini, C. Mistic, P. Povero, K. Schroeder & G. Bavestrello, 2011b. Characteristics of the mesophotic megabenthic assemblage of the Vercelli Seamount (North Tyrrhenian Sea). *PLoS One* 6: e16357.
- Bo, M., S. Canese, M. Giusti, C. Spaggiari, M. Angiolillo, E. Salvati, S. Greco & G. Bavestrello, 2011c. Mesophotic coral forests of the Italian seas. *Proceedings of the World Conference on Marine Biodiversity, Scotland*: 23.
- Boehlert, G. W. & A. Genin, 1987. A review of the effects of seamounts on biological processes. In Keating, B. H., P. Fryer, R. Batiza & G. W. Boehlert (eds), *Seamounts, Islands and Atolls*. *Geophysical Monograph Series*, Vol. 43: 319–334.
- Borojevic, R., L. Cabioc & C. Levi, 1968. Inventaire de la Faune Marine de Roscoff: Spongiaires. *Edition de la Station Biologique de Roscoff*: 2–41.
- Bourcier, M. & H. Zibrowius, 1973. Les “boues rouges” déversées dans le canyon de la Cassidaigne (région de Marseille). Observations en soucoupe plongeante SP 350 (juin 1971) et résultats de dragages. *Téthys* 4: 811–842.
- Boury-Esnault, N., M. Pansini & M. J. Uriz, 1994. Spongiaires bathyaux de la Mer d’Alboran et du Golfe Ibéro-Marocain. *Mémoires du Muséum National D’Histoire Naturelle* 160: 1–174.
- Burton, M., 1926. Description of South African sponges collected in the South African Marine Survey. Part I. Myxospongia and Astrotetaxonida. *Fisheries Bulletin*. Fisheries and Marine Biological Survey Division, Union of South Africa Reports 4: 1–29.
- Burton, M., 1930. Norwegian sponges from the Norman Collection. *Proceedings of the Zoological Society of London* 2: 487–546.
- Burton, M., 1959. Spongia. *The Zoology of Iceland* 2: 1–71.
- Cardenas, P., 2010. Phylogeny, Taxonomy and Evolution of the Astrophorida (Porifera, Demospongiae). University of Bergen, PhD Thesis: 1–80.
- Carlier, A., E. Le Guilloux, K. Olu, J. Sarrazin, F. Mastrototaro, M. Taviani & J. Clavier, 2009. Trophic relationships in a deep Mediterranean cold-water coral bank (Santa Maria di Leuca, Ionian Sea). *Marine Ecology Progress Series* 397: 125–137.
- Cecere, E. & C. Perrone, 1988. First contribution to the knowledge of macrobenthic flora of the Amendolara Seamount (Ionian Sea). *Oebalia* 14: 43–67.
- Ceramicola, S., D. Civile, A. Caburlotto, A. Cova, D. Accettella, M. Caffau, D. Cotterle, P. Diviacco, N. Wardell & R. Ramella, 2008. Analisi morfo-sedimentaria del margine calabro ionico settentrionale. *Proceedings of the GNGTS 2008 Conference*: 423–424.
- Clark, M. R., A. A. Rowden, T. Schlacher, A. Williams, M. Consalvey, K. I. Stocks, A. D. Rogers, T. D. O’Hara, M. White, T. M. Shank & J. M. Hall-Spencer, 2010. The ecology of seamounts: structure, function, and human impacts. *Annual Reviews of Marine Science* 2: 253–278.
- Clavico, E. E. G., G. Muricy, B. A. P. da Gama, D. Batista, C. R. R. Ventura & R. C. Pereira, 2006. Ecological roles of national products from the marine sponge *Geodia corticostylifera*. *Marine Biology* 148: 479–488.
- Conway, K. W., J. V. Barrie, W. C. Austin & J. L. Luternauer, 1991. Holocene sponge bioherms on the western Canadian continental shelf. *Continental Shelf Research* 11: 771–790.
- D’Addabbo Gallo, M., L. De Morone & S. Grimaldi de Zio, 1987. Heterotardigrada of the Amendolara Shoal, High Ionian Sea. In Bertolani, R. (ed.), *Biology of Tardigrades*. *Proceedings of the Fourth International Symposium on the Tardigrada*, September 1985, Modena, Italy. *Selected Symposia and Monographs*: 93–101.
- Di Geronimo, I., R. La Perna, A. Rosso & R. Sanfilippo, 1998. Notes on two upper-circalittoral assemblages from the Amendolara Bank (Northern Ionian Sea). *Bollettino Accademia Gioenia di Scienze Naturali* 30: 243–262.
- Duineveld, G. C. A., M. S. S. Lavaleye, M. J. N. Bergman, H. de Stigter & F. Mienis, 2007. Trophic structure of a cold-water coral mound community (Rockall Bank, NE Atlantic) in relation to the near-bottom particle supply and current regime. *Bulletin of Marine Science* 81: 449–467.
- Ferrer Hernández, F., 1914. Esponjas del Cantábrico. Parte 2°. III. Myxospongia. IV. Tetraaxonida. V. Triaxonida. *Trabajos del Museo Nacional de Ciencias Naturales, serie Zoológica* 17: 3–44.
- Freiwald, A., L. Beuck, A. Rüggeberg, M. Taviani & D. Hebeln, 2009. The white coral community in the Central Mediterranean Sea revealed by ROV surveys. *Oceanography* 22: 58–74.
- Gerdes, D., E. Isla, R. Knust, K. Mintenbeck & S. Rossi, 2008. Response of Antarctic benthic communities to disturbance: first results from the artificial benthic disturbance experiment on the eastern Weddell Sea Shelf, Antarctica. *Polar Biology* 31: 1469–1480.
- Grancini, G., A. Lavenia & F. Mosetti, 1969. Ricerche oceanografiche nel Golfo di Taranto (Indagini fisiche del luglio 1968). *Atti dell’Istituto Veneto di Scienze, Lettere ed Arti* 127: 309–326.
- Hogg, M. M., O. S. Tendal, K. W. Conway, S. A. Pomponi, R. W. M. van Soest, J. Gutt, M. Krautter & J. M. Roberts, 2010. Deep-Sea Sponge Grounds: Reservoirs of Biodiversity. *UNEPWCMC Biodiversity Series* no. 32. UNEP-WCMC, Cambridge: 1–88.
- Hooper, J. N. A., 2000. ‘Sponguide’. Guide to Sponge Collection and Identification. <http://www.qm.qld.gov>.

- [au/organisation/sections/SessileMarineInvertebrates/spong.pdf](#).
- Ilan, M., N. Ben-Eliahu & B. S. Galil, 1994. Three deep water sponges from the Eastern Mediterranean and their associated fauna. *Ophelia* 39: 45–54.
- Ilan, M., M. Gugel, B. S. Galil & D. Janussen, 2003. Small bathyal sponge species from East Mediterranean revealed by a non-regular soft bottom sampling technique. *Ophelia* 57: 145–160.
- Jacob, U., S. Terpstra & T. Brey, 2003. High-Antarctic regular sea urchins—the role of depth and feeding in niche separation. *Polar Biology* 26: 99–104.
- Klitgaard, A. B., 1995. The fauna associated with outer shelf and upper slope sponges (Porifera, Demospongiae) at the Faroe Islands, northeastern Atlantic. *Sarsia* 80: 1–22.
- Klitgaard, A. B. & O. S. Tendal, 2004. Distribution and species composition of mass occurrences of large-sized sponges in the northeast Atlantic. *Progress in Oceanography* 61: 57–98.
- Levi, C., 1960. Spongiaires des côtes occidentales africaines. *Bulletin de l'Institut Francais d'Afrique Noire* 22: 743–769.
- Levi, C., 1967. Spongiaires d'Afrique du Sud. (3) Tetractinellides. *Transactions of the Royal Society of South Africa* 37: 227–256.
- Linares, C., R. Coma, J. Garrabou, D. Díaz & M. Zabala, 2008. Size distribution, density and disturbance in two Mediterranean gorgonians: *Paramuricea clavata* and *Eunicella singularis*. *Journal of Applied Ecology* 45: 688–699.
- Longo, C., F. Mastrototaro & G. Corriero, 2002. Sponge fauna associated with white corals from the Western Ionian Sea. *Bollettino dei Musei e degli Istituti Biologici dell'Università di Genova* 66–67: 118.
- Longo, C., F. Mastrototaro & G. Corriero, 2005. Sponge fauna associated with a Mediterranean deep-sea coral bank. *Journal of the Marine Biological Association of the United Kingdom* 85: 1341–1352.
- Magnino, G., M. F. Gravina, P. Righini, F. Serena & M. Pansini, 1999. Due Demosponge Lithistidi nuove per i mari italiani. *Biologia Marina Mediterranea* 6: 391–393.
- Maldonado, M., 1992. Demosponges of the red coral bottoms from the Alboran Sea. *Journal of Natural History* 26: 1131–1161.
- Maldonado, M., 2002. Family Pachastrellidae Carter, 1875. In Hooper, J. N. A. & R. W. M. van Soest (eds), *Systema Porifera: A Guide to the Classification of Sponges*. Kluwer Academic, Plenum Publisher, New York, Boston, Dordrecht, London, Moscow: 141–164.
- Martinelli, M., G. Bavestrello, B. Calcinai & M. Taviani, 2007. Poriferi associati ai banchi di Coralli bianchi del Canale di Sicilia a Sud di Malta. *Proceedings of the 68° UZI Congress, Lecce*.
- Mastrototaro, F., G. D'Onghia, G. Corriero, A. Matarrese, P. Maiorano, P. Panetta, M. Ghepardi, C. Longo, A. Rosso, F. Sciuto, R. Sanfilippo, C. Gravili, F. Boero, M. Taviani & A. Tursi, 2010. Biodiversity of the white coral and sponge community off Cape Santa Maria di Leuca (Mediterranean Sea). *Deep Sea Research II* 57: 412–430.
- McDonald, J. I., A. K. McGuinness & J. N. A. Hooper, 2003. Influence of re-orientation on alignment to flow and tissue production in a *Spongia* sp. (Porifera: Demospongiae: Dictyoceratida). *Journal of Experimental Marine Biology and Ecology* 296: 13–22.
- Montenegro-González, J. & A. Acosta, 2010. Habitat preference of Zoantharia genera depends on host sponge morphology. *Universitas Scientiarum* 15: 110–121.
- Panetta, P., B. Dell'Angelo & F. Fiordiponti, 1985. I Poliplacofori del Banco dell' Amendolara (Golfo di Taranto). *Oebalia* 11: 767–769.
- Pansini, M., 1987. Report on a collection of Demospongiae from soft bottoms of the eastern Adriatic Sea. In Clifford Jones, W. (ed.), *European Contributions to the Taxonomy of Sponges*. Sherkin Island Marine Station: 41–53.
- Pansini, M., & C. Longo, 2003. A review of the Mediterranean Sea sponge biogeography with, in appendix, a list of the demosponges hitherto recorded from this sea. *Biogeographia*, XXIV, *Marine Biogeography of the Mediterranean Sea: Patterns and Dynamics of Biodiversity*: 59–90.
- Pansini, M. & C. Longo, 2008. Porifera. In *La checklist della flora e della fauna dei mari italiani (a cura di G. Relini)*. Ministero dell'Ambiente e tutela del territorio, Roma. *Biologia Marina Mediterranea* 15: 42–66.
- Pansini, M. & B. Musso, 1991. Sponges from trawl-exploitable bottoms of Ligurian and Tyrrhenian Seas: distribution and ecology. *Marine Ecology* 12: 317–329.
- Perrone, A., 1985. Report on the biological survey of Amendolara Seamount: Nudibranchia of Amendolara Seamount. *Journal of Molluscan Studies* 51: 102.
- Prevati, M., M. Palma, G. Bavestrello, C. Falugi & C. Cerrano, 2010. Reproductive biology of *Parazoanthus axinellae* (Schmidt, 1862) and *Savalia savaglia* (Bertoloni, 1819) (Cnidaria, Zoantharia) from the NW Mediterranean coast. *Marine Ecology* 31: 555–565.
- Pulitzer-Finali, G., 1983. A collection of Mediterranean Demospongiae (Porifera) with, in appendix, a list of the Demospongiae hitherto recorded from the Mediterranean Sea. *Annali del Museo civico di storia naturale Giacomo Doria* 84: 445–621.
- Reimer, J. D., F. Sinniger & C. P. Hickman Jr., 2008. Zoanthid diversity (Anthozoa: Hexacorallia) in the Galapagos Island: a molecular examination. *Coral Reefs* 27: 641–654.
- Rice, A. J., M. H. Thurston & A. L. New, 1990. Dense aggregations of a hexactinellid sponge, *Pheronema carpenteri* in the Porcupine Seabight (Northeast Atlantic Ocean) and possible causes. *Progress in Oceanography* 24: 179–196.
- Ridente, D., F. Fogliani, D. Minisini, F. Trincardi & G. Verdicchio, 2007. Shelf-edge erosion, sediment failure and inception of Bari Canyon on the south-western Adriatic margin (Central Mediterranean). *Marine Geology* 246: 193–207.
- Rogers, A. D., 1999. The biology of *Lophelia pertusa* (Linnaeus, 1758) and other deep-water reef-forming corals and impacts from human activities. *International Review of Hydrobiology* 84: 315–406.
- Romagnoli, C., 2004. Segnalazione di terrazzi deposizionali sommersi nelle Isole Eolie Occidentali (Alicudi-Filicudi). *Memorie Descrittive della Carta Geologica d'Italia* 58: 155–158.
- Rossi, S. & P. Colantoni, 1976. Appunti sul Banco Amendolara nel Golfo di Taranto. *Giornale di Geologia* 2: 277–284.
- Rossi, S. & G. Gabbianelli, 1978. Geomorfologia del Golfo di Taranto. *Bollettino della Società Geologica Italiana* 97: 423–437.

- Rosso, A., A. Vertino, I. Di Geronimo, R. Sanfilippo, F. Sciuto, R. Di Geronimo, D. Violanti, C. Corselli, M. Taviani, F. Mastrototaro & A. Tursi, 2010. Hard- and soft-bottom thanatofacies from the Santa Maria di Leuca deep-water coral province, Mediterranean. *Deep Sea Research II* 57: 360–379.
- Salvati, E., M. Angiolillo, M. Bo, G. Bavestrello, M. Giusti, A. Cardinali, S. Puce, C. Spaggiari, S. Greco & S. Canese, 2010. The population of *Errina aspera* (Hydrozoa, Stylasteridae) of the Messina Strait (Mediterranean Sea). *Journal of the Marine Biological Association of the United Kingdom* 90: 1331–1336.
- Samadi, S., T. Schlacher & B. Richer de Forges, 2007. Seamount benthos. In Pitcher, T. J., et al. (eds), *Seamounts: Ecology, Fisheries & Conservation*. Blackwell, Oxford: 119–140.
- Sarà, L. & J. Vacelet, 1973. Ecologie des Démosponges. In Grassé, P. P. (ed.), *Traité de Zoologie*. VIII, Spongiaires. Masson, Paris: 462–576.
- Stephens, J., 1915. Sponges of the coasts of Ireland. I. The Triaxonidand and part of the Tetraxonida. *Fisheries, Ireland Scientific Investigations* 4: 1–43.
- Strusi, A., A. Tursi, E. Cecere, C. Montanaro & P. Panetta, 1985. The Amendolara Seamount (High Ionian Sea): general description. *Oebalia* 11: 379–388.
- Swain, T. D. & J. L. Wulff, 2007. Diversity and specificity of Caribbean sponge-zoanthid symbioses: a foundation for understanding the adaptive significance of symbioses and generating hypotheses about higher-order systematics. *Biological Journal of the Linnean Society* 92: 695–711.
- Taviani, M. & L. Angeletti, 2009. Un giardino sepolto nel Mar Adriatico. *Darwin* 32: 74–81.
- Taviani, M., A. Freiwald & H. Zibrowius, 2005a. Deep coral growth in the Mediterranean Sea: an overview. In Freiwald, A. & J. M. Roberts (eds), *Cold-Water Corals and Ecosystems*. Springer-Verlag, Berlin Heidelberg: 137–156.
- Taviani, M., A. Remia, C. Corselli, A. Freiwald, E. Malinverno, F. Mastrototaro, A. Savini & A. Tursi, 2005b. First geomarine survey of living cold-water *Lophelia* reefs in the Ionian Sea (Mediterranean basin). *Facies* 50: 409–417.
- Topsent, E., 1894. Etude monographique des Spongiaires de France I. Tetractinellida. *Archives de Zoologie expérimentale et générale* 2: 259–400.
- Topsent, E., 1904. *Spongiaires des Açores*. Resultats des Campagnes Scientifique du Prince de Monaco 25: 1–279.
- Topsent, E., 1913. Spongiaires provenant des campagnes scientifiques de la «Princesse-Alice» dans les Mers du Nord (1898–1899, 1906–1907). Resultats des Campagnes Scientifique du Prince de Monaco 45: 3–67.
- Topsent, E., 1928. Spongiaires de l'Atlantique et de la Méditerranée, provenant des croisières du Prince Albert I de Monaco. Resultats des Campagnes Scientifique du Prince de Monaco 74: 1–373.
- Tortonese, E., 1965. Fauna d'Italia. Echinodermata. Edizioni Calderini, Bologna: 380.
- Trincardi, F., F. Fogliani, G. Verdicchio, A. Asioli, A. Correggiari, D. Minisini, A. Piva, A. Remia, D. Ridente & M. Taviani, 2007. The impact of cascading currents on the Bari Canyon System, SW Adriatic margin (Central Mediterranean). *Marine Geology* 246: 208–230.
- Tunesi, L., G. Diviacco & G. Mo, 2001. Observations by submersible on the biocoenosis of the deep-sea corals off Portofino promontory (Northwestern Mediterranean Sea). In Willison, J. H. M., J. Hall, S. Gass, E. L. R. Kenchington, M. Butler & P. Doherty (eds), *Proceedings of the First International Symposium on Deep-Sea Corals*. Ecology Action Centre and Nova Scotia Museum, Halifax: 76–87.
- Turchetto, M., A. Boldrin, L. Langone, S. Miserocchi, T. Tesi & F. Fogliani, 2007. Particle transport in the Bari Canyon (southern Adriatic Sea). *Marine Geology* 246: 231–247.
- Turon, X., I. Tarjuelo & M. J. Uriz, 1998. Growth dynamics and mortality of the encrusting sponge *Crambe crambe* (Poecilosclerida) in contrasting habitats: correlation with population structure and investment in defence. *Functional Ecology* 12: 631–639.
- Uriz, M. J., 1978. Contribución a la Fauna de Esponjas (Demospongia) de Cataluña. Universidad de Barcelona. PhD Thesis: 1–367.
- Uriz, M. J., 1981. Estudio sistemático de las esponjas Astrophorida (Demospongia) de los fondos de pesca de Arrastre, entre Tossa y Calella (Cataluña). *Boletín del Instituto Español de Oceanografía* 6: 8–58.
- Uriz, M. J., 1982. Estudio sistemático de las esponjas del orden Axinellida (Demospongia) de la Costa Brava (Cataluña). *Actas II Simposio ibérico de estudios del Bentos Marino* 2: 57–80.
- Uriz, M. J., 1983. Présence de l'espèce *Eспериopsis fucorum* (Demospongia, Poecilosclerida) en Méditerranée. *Vie Milieu* 33: 237–240.
- Uriz, M. J., 1984. Descripción de nuevas esponjas del litoral de Namibia (sudeste de África). *Resultados Expediciones Científicas* 12: 107–116.
- Uriz, M. J., 1988. Deep-water sponges from the continental shelf and slope off Namibia (Southwest Africa): classes Hexactinellida and Demospongia. *Monografías de Zoología Marina* 3: 9–157.
- Uriz, M. J. & M. A. Bibiloni, 1984. Esponjas Homosclerofóridas (Demospongia) del Litoral Catalán. *Miscellánea Zoológica* 8: 7–12.
- Uriz, M. J. & M. Maldonado, 2000. The genus *Acanthodendrilla* in the Mediterranean Sea with description of a new species. *Zoosystema* 22: 401–410.
- Uriz, M. J. & D. Rosell, 1990. Sponges from bathyal depths (1000–1750 m) in the Western Mediterranean Sea. *Journal of Natural History* 24: 373–391.
- Vacelet, J., 1960. Eponges de la Méditerranée Nord-Occidentale récoltées par le «Président-Théodore-Tissier» (1958). *Recherches et Travaux de Institut des Pêches Maritimes* 24: 257–272.
- Vacelet, J., 1961. Spongiaires (Démospouges) de la région de Bonifacio (Corse). *Recherches et Travaux de la Station marine d'Endoume* 22: 351–354.
- Vacelet, J., 1969. Éponges de la roche du large et de l'étage bathyal de Méditerranée. *Mémoires du Muséum National d'Histoire Naturelle* 59: 146–219.
- Vacelet, J., 1996. Nouvelles signalisations d'éponges profondes en Méditerranée. *Mésogée* 55: 107–114.
- Vertino, A., A. Savini, A. Rosso, I. Di Geronimo, F. Mastrototaro, R. Sanfilippo, G. Gay & G. Etiope, 2010. Benthic habitat characterization and distribution from two representative sites of the deep-water SML Coral Mound

- Province (Mediterranean). *Deep Sea Research II* 57: 380–396.
- Voultsiadou-Koukouras, E. & R. W. M. van Soest, 1993. Suberitidae (Demospongiae, Hadromerida) from the North Aegean Sea. *Beaufortia-Institute of Taxonomic Zoology (Zoological Museum) University of Amsterdam* 43: 176–186.
- Wainwright, S. A. & M. A. R. Koehl, 1976. The nature of flow and the reaction of benthic cnidarian to it. In Mackie, G. O. (ed.), *Coelenterate Ecology and Behavior*. Plenum, New York: 5–21.
- Warner, G. F., 1977. On the shape of passive suspension feeders. In Keegan, B. F., P. O’Ceidigh & P. J. S. Boaden (eds), *Biology of Benthic Organisms*. Pergamon, Oxford/New York: 567–576.
- Zibrowius, H., 1985. Spongiaires hexactinellides vivant en mer Ionienne par 2000 m de profondeur. *Rapports Commission Internationale pour l’Exploration Scientifique de la Mer Méditerranée* 29: 335–338.