

Role of entanglement in calibrating optical quantum gyroscopes

Pieter Kok,^{1,*} Jacob Dunningham,² and Jason F. Ralph³

¹*Department of Physics and Astronomy, University of Sheffield, Sheffield S3 7RH, United Kingdom*

²*Department of Physics and Astronomy, University of Sussex, Brighton BN1 9QH, United Kingdom*

³*Department of Electrical Engineering and Electronics, The University of Liverpool, Brownlow Hill, Liverpool L69 3GJ, United Kingdom*

(Received 26 May 2015; published 24 January 2017)

We consider the calibration of an optical quantum gyroscope by modeling two Sagnac interferometers, mounted approximately at right angles to each other. Reliable operation requires that we know the angle between the interferometers with high precision, and we show that a procedure akin to multiposition testing in inertial navigation systems can be generalized to the case of quantum interferometry. We find that while entanglement is a key resource within an individual Sagnac interferometer, its presence between the interferometers is a far more complicated story. The optimum level of entanglement depends strongly on the sought parameter values, and small but significant improvements may be gained from choosing states with the optimal amount of entanglement between the interferometers.

DOI: [10.1103/PhysRevA.95.012326](https://doi.org/10.1103/PhysRevA.95.012326)

I. INTRODUCTION

Quantum metrology and quantum parameter estimation offer great potential improvements in precision measurement. Recent experiments have demonstrated quantum improvements in measuring protein concentration [1], tracking lipid granules in yeast cells [2], and searching for gravitational waves [3]. In optical systems, the standard way to frame problems in quantum metrology is as a measurement of the phase of an optical signal. The aim is to improve the precision of such measurements from the classical shot noise limit (SNL) to the quantum mechanical Heisenberg limit [4]. It has been recognized that any practical implementation of quantum metrology requires methods to deal with effects due to environmental noise and dissipation [5]. Quantum error correction has been proposed to combat the effect of noise [6–8], and loss-tolerant metrology protocols have been designed and implemented to address some of the negative effects of dissipation [9–12]. It has been shown that the measurement of d phases in an interferometer can obtain an improvement of a factor $O(d)$ in the precision when multimode entanglement is used [13]. This behavior persists in the presence of photon loss [14], even though multimode entanglement is highly susceptible to such processes [15]. When the loss parameters are also estimated, there is a trade-off between the attainable precision of the phase estimation and the estimation of these parameters [16]. However, loss and noise are not the only causes for imperfect metrology. The accuracy of a composite sensor system is only partially determined by the precision of the individual measurements. Other sources of imperfection can include badly characterized responses to nonstandard stimuli, or couplings between the parameters of interest. The performance of any larger scale system, i.e., one containing a number of individual sensors, will be limited by the presence of such nuisance parameters, but this aspect of quantum metrology has been somewhat overlooked.

In this paper, we address the problem of nuisance parameters arising from unwanted couplings between sensors in

practical quantum parameter estimation. Such couplings affect the measurement precision—defined by the mean square error (MSE)—and must also be estimated, even if we are ultimately not interested in their numerical value [17]. For a single parameter, the quantum Cramér-Rao bound (QCRB) puts a lower limit on the MSE, determined by the inverse of the quantum Fisher information (QFI) [18,19]. Multiple parameters lead to a QFI matrix, the inverse of which provides lower bounds for the MSE covariance matrix [20,21]. Nuisance parameters are part of this multiparameter estimation problem. While the QCRB for a single parameter can generally be attained, this is not always true of the QCRB for multiple parameters [22,23]. Where multiple parameters are being estimated, it matters whether the generators of translation of the parameters commute or not, with implications for the optimal strategies of the parameter estimation procedures [24–29]. Even though multimode entanglement can be used to improve the estimation of multiple phase parameters beyond the classical SNL [13], this is not always the case. For the example considered in this paper, we show that the optimum entanglement is a function of the nuisance parameters being estimated and that—for a range of parameter values with practical relevance—the presence of entanglement can be detrimental to the estimation process.

We consider a simplified optical gyroscope configuration based on two Sagnac interferometers, shown in Fig. 1, in which the two (nominally) orthogonal interferometers are misaligned by a small angle θ . We find that in such circumstances entanglement can hinder the calibration of the misalignment. In fact, we will show that entanglement (or classical correlations) in the quantum state shared by the two interferometers can limit the precision of the estimation process for θ , while entanglement can assist in the determination of the phases of interest, φ_y and φ_z . These results are valid for a wide range of physically relevant parameter values, and we indicate how the calibration process can be generalized to a set of three Sagnac interferometers measuring arbitrary three-dimensional rotation rates.

The misalignment of gyroscopic sensors is a well-known problem in the construction of inertial navigation systems [30,31]. Fiber-optical Sagnac interferometers are often used

*p.kok@sheffield.ac.uk

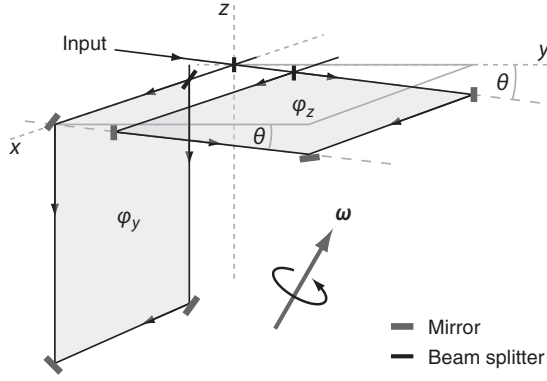


FIG. 1. Two nearly orthogonal (coupled) Sagnac interferometers that are misaligned by an angle θ . The entire system rotates with angular velocity ω , and the resulting phase shifts φ_y and φ_z in the interferometers can be used to estimate ω . For clarity, the third interferometers measuring φ_x and the photodetectors are omitted.

in modern “strapdown” inertial navigation systems (i.e., fixed sensors within the body of the navigation system) [32]. In such systems, three fiber-optical gyroscopes and three accelerometers are mounted in the inertial measurement unit of the navigation system. The gyroscopes provide measurements of the rotation rates about their axes, where the axes are normally designed to form an orthogonal triad. Integrating the rotation rates provides estimates of the angles of rotation of the system, relative to a set of reference axes. The angles are used to determine the system’s orientation, but they are also used to resolve the measured accelerations into the reference axes to determine the system’s translational motion (i.e., velocity and position). As a result, the accuracy of the gyroscopic sensors is often a limiting factor in the overall performance of an inertial navigation system. The gyroscopes will have misalignment errors due to mechanical tolerances in their construction and systematic errors in the measurement devices, both of which limit the accuracy of the sensors. Calibrating these errors, and correcting for them in software, is one way to improve the accuracy of the inertial navigation system, and this has become standard practice in many applications [30,31]. After production, an inertial measurement unit will undergo a “multiposition” test. It is rotated through a set of known rotations, using a very accurate reference system, to obtain a static measurement value and then subjecting the unit to a known rotation rate after each rotation—normally, at least six different rotations or orientations are used to calibrate nonorthogonality within the triads of sensors, static bias measurement errors in each sensor, and scaling errors in the measurement of the known rotation rates [30,31]. In this paper, we are primarily interested in the example where there is coupling between two nonorthogonal gyroscopes, measuring rotation rates about the y and z axes, so we will consider the simplest of these calibration processes, the measurement of a fixed (but otherwise unknown) rotation rate, followed by another measurement after a rotation by $\pi/2$ about the x axis—although we will also indicate how this may be extended to deal with a triad of three gyroscopes.

II. COUPLED SAGNAC INTERFEROMETERS

The Sagnac interferometer [33] can be described quantum mechanically in a very similar way to the Mach-Zehnder interferometer, but instead of two spatially different paths in the latter, the Sagnac interferometer has a single loop with two counterpropagating modes, a and b . The phase shift induced by a rotation of the interferometer can be written as a unitary transformation

$$U(t) = \exp[-i\omega \cdot \mathbf{e}(\hat{n}_a - \hat{n}_b)t], \quad (1)$$

where ω is a normalized rotation rate, \mathbf{e} is the normal vector to the plane of the interferometer, and \hat{n}_a and \hat{n}_b are the number operators in modes a and b . (The Sagnac phase shift is dependent on a number of device-specific parameters—including operating wavelength, path length, and enclosed area [32]—and it is proportional to the angular velocity vector applied to the interferometer, so we will use a normalized rotation rate to remove the explicit dependence on these parameters and to simplify the presentation of the results below.) For simplicity, we assume that the Sagnac interferometer lies entirely in the xy plane ($\mathbf{e} = \hat{e}_z$), and we define $\varphi_j \equiv \omega_j t$ and $\hat{n} \equiv \hat{n}_a - \hat{n}_b$. Then we can write the transformation in Eq. (1) as $U(\varphi_z) = \exp[-i\varphi_z \hat{n}]$. In the usual notation where $U = \exp(-iHt/\hbar)$, the Hamiltonian becomes $H = \hbar\omega_z \hat{n}$ with t the interaction time (assumed to be known with arbitrary precision), and we will now set $\hbar = 1$. Clearly, measurements of the phase φ_z can be used to determine the rotation rate ω_z applied to the gyroscope. We can construct a second Sagnac interferometer in the xz plane ($\mathbf{e} = \hat{e}_y$) to determine the rotation rate ω_y , and a third can be added to determine ω_x . The use of three such gyroscopes allows a general rotation rate about an arbitrary axis to be determined [34]. We concentrate on the case with two interferometers for clarity, but the generalization to three interferometers will also be discussed below.

In any practical construction, the two Sagnac interferometers will not be perfectly perpendicular (and when the interferometer is constructed from optical fibers it may not lie perfectly in a plane). Let \hat{n}_y be the number difference operator for the counterpropagating modes of the interferometer in the xz plane, and \hat{n}_z the equivalent operator for the interferometer in the xy plane. Furthermore, let θ be the angle with which the φ_z interferometer is misaligned, shown in Fig. 1:

$$\hat{e}'_z = \cos\theta \hat{e}_z + \sin\theta \hat{e}_y. \quad (2)$$

The transformation of the optical state inside the interferometers then becomes

$$U(\varphi) = \exp[-i(\varphi_y \hat{n}_y + \cos\theta \varphi_z \hat{n}_z + \sin\theta \varphi_y \hat{n}_z)], \quad (3)$$

leading to a Hamiltonian for the system

$$H = \omega_y \hat{n}_y + \cos\theta \omega_z \hat{n}_z + \sin\theta \omega_y \hat{n}_z. \quad (4)$$

There is now a coupling between the two interferometers given by the term $\sin\theta \omega_y \hat{n}_z$. As a consequence, we have three unknown parameters, φ_y , φ_z , and θ , but we measure only two observables, \hat{n}_y and \hat{n}_z . The problem is therefore underdetermined, and we cannot extract the true values of φ_y, φ_z without an unknown bias.

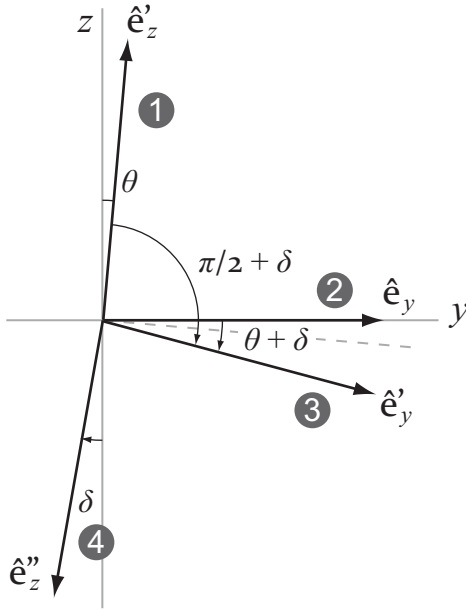


FIG. 2. The coordinate system and the normal vectors to the Sagnac interferometers. Gyroscopes ① and ② take one set of measurements, and after a rotation of $\pi/2 + \delta$, gyroscopes ③ and ④ take another set of measurements. Gyroscope ① rotates to ③, and ② rotates to ④.

To remedy this, we may rotate the system of gyroscopes by $\pi/2$, while keeping the applied rotation rate fixed with respect to an external reference system. This allows us to measure four different observables (two for each orientation), given our three unknown parameters. Assuming that the system is rigid, θ remains unchanged. However, we do need to introduce a new nuisance parameter δ that encodes imperfections in the $\pi/2$ rotation. This leaves us with four parameters and four observables. We will show in Sec. III that this leads to a linearly independent set of four estimators, but first we establish the coordinate system local to our gyroscopes, shown in Fig. 2. In the original position of Fig. 1, the y rotation ② is matched to the local y axis by definition, while the z rotation ① is misaligned according to Eq. (2). After a rotation of $\pi/2 + \delta$ about the sensor x axis, gyroscope ③ is now aligned along the normal \hat{e}'_y with

$$\hat{e}'_y = \cos(\theta + \delta)\hat{e}_y - \sin(\theta + \delta)\hat{e}_z, \quad (5)$$

and gyroscope ④ is aligned along the normal \hat{e}''_z with

$$\hat{e}''_z = -\cos\delta\hat{e}_z - \sin\delta\hat{e}_y. \quad (6)$$

The measured phases are decomposed in the same way as the normal vectors ($\varphi_j \leftrightarrow \hat{e}_j$). In the ideal case where $\theta = \delta = 0$ we have $\varphi_y = \varphi'_y$, and $\varphi_z = \varphi'_z = -\varphi''_z$.

Let the joint state in the two nearly perpendicular gyroscopes be denoted by ρ_{ij} , where i and j indicate the gyroscopes ①–④ in Fig. 2. The two gyroscopic measurements are equivalent to a single measurement with four gyroscopes simultaneously, with a joint state $\rho \equiv \rho_{12} \otimes \rho_{34}$. In general, the optimal state ρ_{12} for ① and ② will not be the same as the optimal state ρ_{34} for ③ and ④, since the evolution U_{12} of the gyroscopes ① and ② is not equal to the evolution U_{34} for the

gyroscopes ③ and ④ due to the different relative rotation ω . The transformation of the optical state due to the rotation rate ω can be written on the joint system as $U \equiv U_{12}U_{34}$, with

$$U_{12} = \exp[-i(\varphi'_z\hat{n}_z + \varphi_y\hat{n}_y)], \quad (7)$$

$$U_{34} = \exp[-i(\varphi'_y\hat{n}'_z + \varphi''_z\hat{n}'_y)], \quad (8)$$

which depend in a nontrivial way on the parameters φ . The four operators \hat{n}_y , \hat{n}'_y , \hat{n}_z , and \hat{n}'_z commute, and can be measured simultaneously. The joint evolution then becomes

$$U(\varphi) = \exp\left\{-i\left[\phi_y\hat{n}_y - \beta\left(\theta + \frac{\pi}{2}\right)\hat{n}_z\right]\right\} \\ \times \exp\left\{-i\left[\beta\left(\delta + \frac{\pi}{2}\right)\hat{n}'_y + \beta(\theta + \delta)\hat{n}'_z\right]\right\}, \quad (9)$$

where

$$\beta(\alpha) = \phi_y \cos \alpha - \phi_z \sin \alpha, \quad (10)$$

and $\varphi \equiv (\varphi_y, \varphi_z, \theta, \delta)$. The evolution U in Eq. (9) is expressed entirely in terms of the measurable observables \hat{n}_y , \hat{n}'_y , \hat{n}_z , and \hat{n}'_z , and the four unknown parameters φ . In the next section we use this evolution to calculate the quantum Fisher information and the Cramér-Rao bound for these parameters.

III. COVARIANCE AND FISHER INFORMATION

To determine the ultimate precision with which we can estimate the Sagnac phases and the couplings between them, we consider the quantum Cramér-Rao bound

$$\text{Cov}(\varphi) \geq \frac{1}{N} \mathbf{I}_Q^{-1}(\varphi), \quad (11)$$

where $\text{Cov}(\varphi)$ is the covariance matrix of the four variables φ , N is the number of independent measurements, and $\mathbf{I}_Q(\varphi)$ is the quantum Fisher information (QFI) matrix of the three variables [18,35] with elements:

$$[\mathbf{I}_Q(\varphi)]_{ij} = 2\partial_i\partial_j \log |\langle \psi(\varphi) | \psi(\tilde{\varphi}) \rangle|_{\tilde{\varphi}=\varphi}^2, \quad (12)$$

where ∂_i is the derivative with respect to φ_i , and ∂_j the derivative with respect to $\tilde{\varphi}_j$. Let $\mathbf{G} = (G_y, G_z, G_\theta, G_\delta)^T$ be the tuple of generators of translation in our four parameters. Generally, a generator of translation G_α of a parameter α can be defined as [36]

$$G_\alpha \equiv iU^\dagger \partial_\alpha U. \quad (13)$$

This allows us to relate the derivative of the quantum state $|\psi\rangle$ with respect to φ_i to the generator G_i via a Taylor expansion of U . Evaluating the matrix elements of the QFI matrix for pure states $|\psi\rangle$ then yields

$$[\mathbf{I}_Q(\varphi)]_{ij} = 4\left(\frac{1}{2}\langle \{G_i, G_j\} \rangle_\varphi - \langle G_i \rangle_\varphi \langle G_j \rangle_\varphi\right) \\ \equiv 4[\mathbf{C}_S(\mathbf{G})]_{ij}, \quad (14)$$

where $\langle O \rangle_\varphi \equiv \langle \psi(\varphi) | O | \psi(\varphi) \rangle$ for some operator O , and $[\mathbf{C}_S(\mathbf{G})]_{ij}$ is the symmetrized covariance matrix element between operators G_i and G_j , originating from the fact that the quantum Fisher information matrix in Eq. (12) is derived from the symmetric logarithmic derivative [18]. Since all

our generators commute with each other, we can ignore this technical requirement and drop the subscript S .

Applying Eq. (13) to $U(\boldsymbol{\varphi})$ in Eq. (9) for the parameters φ_y , φ_z , θ , and δ , we obtain the generators

$$\begin{aligned} G_y &= \hat{n}_y + \sin\theta \hat{n}_z - \sin\delta \hat{n}'_y + \cos(\theta + \delta) \hat{n}'_z, \\ G_z &= \cos\theta \hat{n}_z - \cos\delta \hat{n}'_y - \sin(\theta + \delta) \hat{n}'_z, \\ G_\theta &= \beta(\theta) \hat{n}_z + \beta\left(\theta + \delta + \frac{\pi}{2}\right) \hat{n}'_z, \\ G_\delta &= -\beta(\delta) \hat{n}'_y + \beta\left(\theta + \delta + \frac{\pi}{2}\right) \hat{n}'_z. \end{aligned} \quad (15)$$

The relation between the generators G_j and the observables \hat{n}_k is linear and can be expressed in matrix form as $\mathbf{G} = \mathbf{M}\hat{\mathbf{n}}$ with

$$M = \begin{pmatrix} 1 & \sin\theta & \cos(\theta + \delta) & -\sin\delta \\ 0 & \cos\theta & \sin(\theta + \delta) & -\cos\delta \\ 0 & \beta(\theta) & \beta(\theta + \delta + \pi/2) & 0 \\ 0 & 0 & \beta(\theta + \delta + \pi/2) & -\beta(\delta) \end{pmatrix}, \quad (16)$$

and $\hat{\mathbf{n}} = (\hat{n}_y, \hat{n}_z, \hat{n}'_y, \hat{n}'_z)^\top$. The determinant of this matrix is

$$\begin{aligned} \det M &= [\beta(\theta) + \beta(\delta)]\beta\left(\theta + \delta + \frac{\pi}{2}\right)\cos(\theta) \\ &\quad - \beta(\theta)\beta(\delta)\sin(\theta + \delta), \end{aligned} \quad (17)$$

which is nonzero for most values of $\boldsymbol{\varphi}$, and in particular for our case of interest of small values of θ and δ . The four observables can therefore be used to determine the four parameters unambiguously.

We calculate the QFI in terms of the matrix M :

$$\begin{aligned} [\mathbf{I}_Q(\boldsymbol{\varphi})]_{ij} &= 4[\langle G_i G_j \rangle - \langle G_i \rangle \langle G_j \rangle] \\ &= 4 \sum_{kl} M_{ik} M_{jl} [\mathbf{C}(\hat{\mathbf{n}})]_{kl}, \end{aligned} \quad (18)$$

or

$$\mathbf{I}_Q(\boldsymbol{\varphi}) = 4\mathbf{M}\mathbf{C}(\hat{\mathbf{n}})\mathbf{M}^\top, \quad (19)$$

where $[\mathbf{C}(\hat{\mathbf{n}})]_{kl} = \langle \hat{n}_k \hat{n}_l \rangle - \langle \hat{n}_k \rangle \langle \hat{n}_l \rangle$ are covariances that depend only on the state inside the interferometers (all the alignment information is encoded in M). This expression contains a large number of variables in $\mathbf{C}(\hat{\mathbf{n}})$, corresponding to the extensive freedom to choose input states of the interferometers. However, we can drastically reduce the number of variables using simple symmetry arguments: Since the state ρ is a tensor product $\rho_{12} \otimes \rho_{34}$, the 2×2 off-diagonal submatrices of $\mathbf{C}(\hat{\mathbf{n}})$ are zero due to the fact that for this case $\langle \hat{n}_k \hat{n}_l \rangle = \langle \hat{n}_k \rangle \langle \hat{n}_l \rangle$. Moreover, to keep the resources in the gyroscopes identical between rotations, we take the photon number differences $(\Delta\hat{n}_y)^2$ and $(\Delta\hat{n}_z)^2$ the same in the gyroscope setting ①+② and ③+④. This leads to the covariance matrix

$$\mathbf{C}(\hat{\mathbf{n}}) = \begin{pmatrix} (\Delta\hat{n}_y)^2 & C_{yz}^{(12)} & 0 & 0 \\ C_{yz}^{(12)} & (\Delta\hat{n}_z)^2 & 0 & 0 \\ 0 & 0 & (\Delta\hat{n}_y)^2 & C_{yz}^{(34)} \\ 0 & 0 & C_{yz}^{(34)} & (\Delta\hat{n}_z)^2 \end{pmatrix}, \quad (20)$$

where $C_{yz}^{(ij)} = \langle \hat{n}_y \hat{n}_z \rangle - \langle \hat{n}_y \rangle \langle \hat{n}_z \rangle$ for gyroscope pair i and j . *A priori* there is no reason to choose different probe states for

the two orientations ①+② and ③+④ during normal operation. However, during the calibration stage of the gyroscopes the rotation $\boldsymbol{\omega}$ is a precisely known rotation in an external reference frame, and its value will generally determine different optimal states ρ_{12} and ρ_{34} . Here we choose $\rho_{12} = \rho_{34}$ to keep the analysis tractable. The optimal strategy for different ρ_{12} and ρ_{34} , as well as the optimal rotation direction $\boldsymbol{\omega}$ will be the subject of future work.

Without prior knowledge of θ and δ there is no reason to require different values for $(\Delta\hat{n}_y)^2$ and $(\Delta\hat{n}_z)^2$. We can therefore take

$$(\Delta\hat{n}_y)^2 = (\Delta\hat{n}_z)^2 \equiv (\Delta\hat{n})^2 \quad (21)$$

and

$$C_{yz}^{(ij)} = \lambda(\Delta\hat{n})^2, \quad (22)$$

with $-1 \leq \lambda \leq 1$ the correlation coefficient. Note that the correlation in this context means entanglement, since the optimal states are pure states [19], and classical correlations require mixed states.

The diagonal elements of $\text{Cov}(\boldsymbol{\varphi})$ are the variances of the parameters of interest, namely, $\text{Var } \varphi_y$, $\text{Var } \varphi_z$, and the nuisance parameters $\text{Var } \theta$ and $\text{Var } \delta$. We can choose to optimize any one of these variances, two or three of them, or all four. In the latter case, we need to choose a quantum state that minimizes

$$\text{Tr}[\text{Cov}(\boldsymbol{\varphi})] \geq \frac{1}{N} \text{Tr}[\mathbf{I}_Q^{-1}(\boldsymbol{\varphi})]. \quad (23)$$

The right-hand side of Eq. (23) provides a bound on the optimal joint estimation of $\boldsymbol{\varphi}$ that may be achieved in the asymptotic limit of large N . Another interesting optimization is to minimize the combination $\text{Var } \varphi_y + \text{Var } \varphi_z$. The values of the nuisance parameters θ and δ are only interesting in as far as they can be used to improve the accuracy of the overall sensor. They do not convey information about the rotation of the gyroscopes per se, but—once calibrated—they can be used to correct fixed errors due to couplings between the measurements of the interferometers. The MSE for a typical case of $\theta = 0.02$ rad, $\delta = 0.013$ rad, $\varphi_y = 0.66$ rad, and $\varphi_z = 0.17$ rad is shown in Fig. 3.

A. Variances for well-aligned gyroscopes

The QFI in Eq. (19) based on the generators in Eq. (15) and the covariance matrix in Eq. (20) is easily calculated. The diagonal elements of its inverse can be written as

$$[\mathbf{I}_Q^{-1}(\boldsymbol{\varphi})]_{kk} = \frac{1}{4[(\Delta\hat{n})^2[\det M(\boldsymbol{\varphi})]^2(1 - \lambda^2)]} F_k(\boldsymbol{\varphi}, \lambda), \quad (24)$$

where the functions F_k are lengthy expressions in $\boldsymbol{\varphi}$ and λ (given in full in Appendix). Note that the diagonal elements of the inverse QFI are all proportional to $(\Delta\hat{n})^{-2}$, as well as the squared determinant of M . This confirms our intuition that we should maximize the variance $(\Delta\hat{n})^2$ in each Sagnac interferometer (for example, using NOON states [37]).

We can also investigate the dependence of $[\mathbf{I}_Q^{-1}(\boldsymbol{\varphi})]_{kk}$ on the correlations in the states between the interferometers, λ . Consider first a perfect gyroscope with $\theta = \delta = 0$. Solving the simpler problem of only two generators \hat{n}_y and \hat{n}_z and ignoring

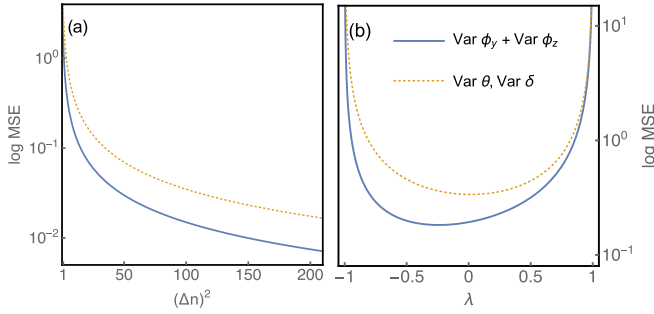


FIG. 3. The \log_{10} MSEs for φ_y , φ_z , θ , and δ as a function of (a) the variance in the photon number $(\Delta\hat{n})^2$ in each Sagnac interferometer—assuming all four interferometers have the same $(\Delta\hat{n})^2$ with $\lambda = 0$, and (b) the correlation coefficient λ between photon number difference in two Sagnac interferometers. Here, $\theta = 0.02$ rad, $\delta = 0.013$ rad, $\varphi_y = 0.66$ rad, $\varphi_z = 0.17$ rad, and $(\Delta\hat{n})^2 = 10$. The curve legend for the variances of φ_y , φ_z , θ , and δ applies to both figures.

the nuisance parameters entirely we obtain

$$\begin{aligned} \text{Var } \varphi_y &\geq \frac{1}{4N} \frac{(\Delta\hat{n}_z)^2}{(\Delta\hat{n}_y)^2(\Delta\hat{n}_z)^2 - C_{yz}^2}, \\ \text{Var } \varphi_z &\geq \frac{1}{4N} \frac{(\Delta\hat{n}_y)^2}{(\Delta\hat{n}_y)^2(\Delta\hat{n}_z)^2 - C_{yz}^2}. \end{aligned} \quad (25)$$

On the other hand, taking the limit of $\theta, \delta \rightarrow 0$ in the four-parameter problem and setting $\kappa \equiv \varphi_y/\varphi_z$ yields a different result for $\text{Var } \varphi_z$:

$$\text{Var } \varphi_z \geq \frac{1}{8N} \frac{(\Delta\hat{n}_y)^2 + \kappa^2(\Delta\hat{n}_z)^2 + 2\kappa C_{yz}}{(\Delta\hat{n}_y)^2(\Delta\hat{n}_z)^2 - C_{yz}^2}, \quad (26)$$

and this reduces to Eq. (25) only in the limit where $\kappa \rightarrow 0$ [up to an overall factor of 2, since Eq. (26) contains two independent sets of measurements—initial and rotated by $\pi/2$ —in this limit]. The reason for the discrepancy between Eqs. (25) and (26) is that the former does not take into account the nuisance parameters at all, while the latter takes into account the uncertainty in the nuisance parameters θ and δ when their mean value is equal to zero.

When we consider the mean square errors in Eq. (25), we see that the right-hand side is minimized when $C_{yz} = 0$. Since these are effectively two separate single-parameter measurements, the quantum Cramér-Rao bound is attainable asymptotically, and we conclude that, in the absence of alignment errors, any correlation between the input states in the two Sagnac interferometers—including entanglement—is detrimental to the precision of the optical quantum gyroscope.

B. Correlation coefficients for misaligned gyroscopes

When alignment errors are introduced, the situation is much more complicated. Figure 3(a) shows the dependence of the parameter errors as a function of $(\Delta\hat{n})^2$. Figure 3(b) indicates that, for the values of φ_y and φ_z shown, the combination $\text{Var } \varphi_y + \text{Var } \varphi_z$ is optimal for some nonzero value of the correlation coefficient λ , while the minimum mean squared errors in the nuisance parameters, θ and δ , are close to zero correlation for this example. This demonstrates that

TABLE I. The sum of the variances $\text{Var } \varphi_y + \text{Var } \varphi_z$ for selected values of φ_y and φ_z with $(\Delta\hat{n})^2 = 10$, both when no entanglement is present between the gyroscopes ($\lambda = 0$) and when the optimal probe state is used ($\lambda = \lambda_{\text{opt}}$). Here, $\theta = 0.02$ rad, and $\delta = 0.013$ rad.

φ_y	φ_z	$\text{Var } \varphi_y + \text{Var } \varphi_z$ ($\lambda = 0$)	$\text{Var } \varphi_y + \text{Var } \varphi_z$ ($\lambda = \lambda_{\text{opt}}$)	λ_{opt}
0.01	0.01	0.05	0.0467	-0.2679
0.01	-0.30	0.0375	0.0375	0.0111
0.20	0.01	5.0375	5.0251	-0.0498
0.20	0.20	0.05	0.0467	-0.2679
0.20	-0.30	0.0431	0.0414	0.2014
-0.30	0.01	11.288	11.275	0.0333
-0.30	0.20	0.0656	0.0597	0.3139
-0.30	-0.30	0.05	0.0467	-0.2679

entanglement can be beneficial in some circumstances, at least for a subset of the unknown quantities, and the optimum correlation is not necessarily the same for all of the parameters. We therefore need to study this behavior in more detail.

When operating as a gyroscope, the input states should be selected to minimize the variance of the measured Sagnac phases, φ_y and φ_z , thereby improving the accuracy of the rotation rates measured by the sensor. This is the asymmetric condition shown in Fig. 3(b), minimizing the combination $\text{Var } \varphi_y + \text{Var } \varphi_z$ to find the optimum correlation coefficient λ_{opt} . Some example values are shown in Table I. The variances depend strongly on the actual values of φ_y and φ_z but the gain in precision by choosing λ_{opt} instead of $\lambda = 0$ appears to be modest for these examples. The optimal states for a given parameter can be found by constructing equal superpositions of the eigenstates with minimum and maximum eigenvalues of the corresponding generator of translations G_j in Eq. (15) [4]. It is generally difficult to create these optimal states, and in addition we require a strategy to choose between different probe states optimized for different parameters. Given the modest improvement in precision it is questionable whether the extra effort would be merited. The typical reduction in the variances shown in Table I is of the order of 5%–10%. However, it is important to remember that the accuracy of gyroscopes in a strapdown inertial navigation affects the accuracy of all of the derived quantities, because the orientation information provided by the gyroscopes is used to resolve the measured accelerations into a set of reference axes to then determine the velocity and position information. This sensitivity to errors in orientation can mean that even marginal gains in the accuracy of the gyroscopes may be important for the overall performance of the system. The trade-off between the difficulty in preparing the entangled states and the benefits of using these states will therefore be application specific.

The case that we are considering here is not the general operation of a gyroscope, it is the situation where the gyroscope is being calibrated to estimate the misalignment of the individual sensors, using the multiposition test described above. In cases where the phases are completely unknown initially, a reasonable approach is to examine the behavior of this optimum value of λ as a function of θ and δ when averaged over all possible values for φ_y and φ_z . These results

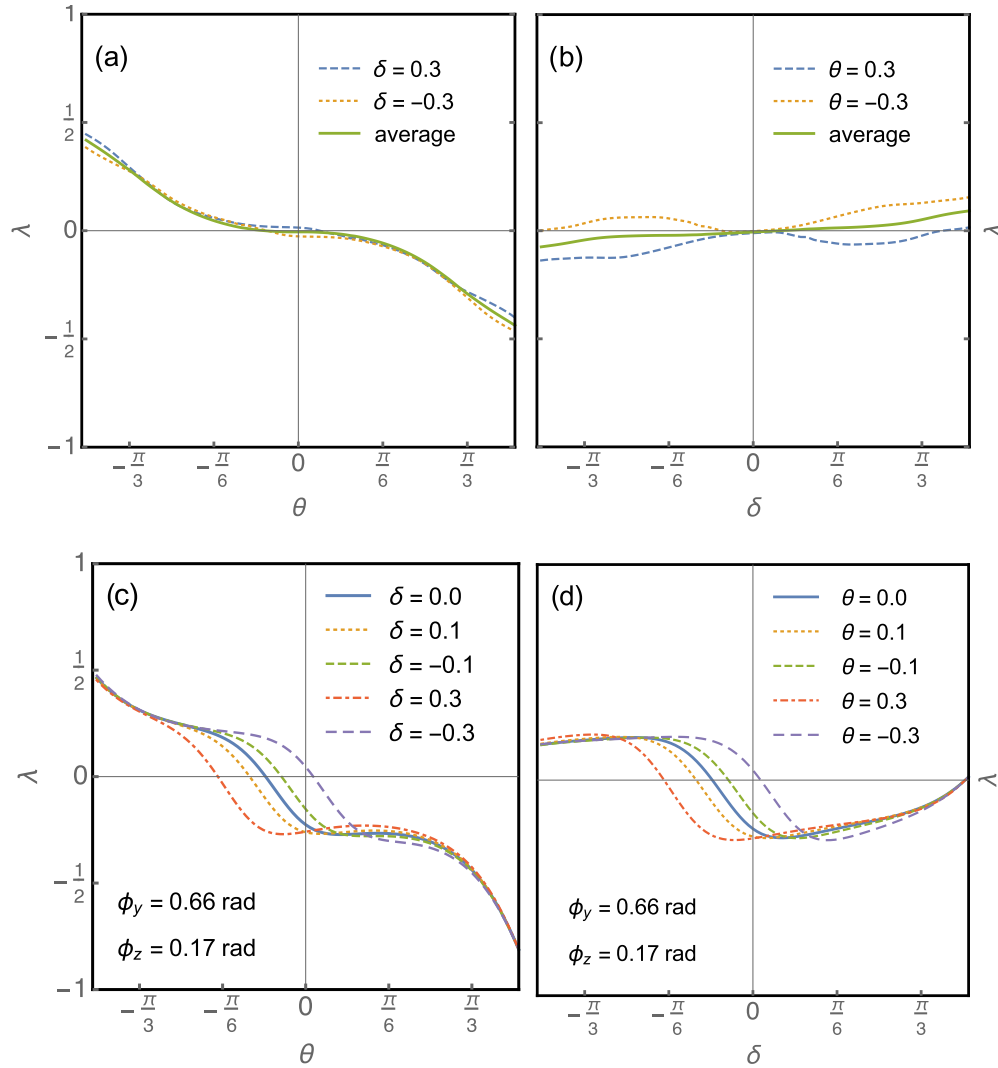


FIG. 4. The correlation coefficient λ that produces the lowest joint variance $\text{Var } \varphi_y + \text{Var } \varphi_z$ for $(\Delta \hat{n})^2 = 10$ as a function of (a) θ and (b) δ , both averaged over all values for the phases, for different values of δ and θ , respectively. The averaged values are calculated by averaging over values of $\delta, \theta = \pm 0.01, \pm 0.1, \pm 0.2$, and ± 0.3 rad. (c) and (d) give the same calculations for specific values of the measured phases, $\varphi_y = 0.66$ rad and $\varphi_z = 0.17$ rad, and the nuisance parameters.

are shown in Figs. 4(a) and 4(b), minimizing the errors in the measured phases $\text{Var } \varphi_y + \text{Var } \varphi_z$ as before. The optimum value of λ for a wide range of the nuisance parameters is very close to zero ($-\pi/6 < \theta, \delta < \pi/6$), when averaged. In particular, the optimum value is zero for small values of θ and δ , and the response of each is only very weakly dependent on the value of the other nuisance parameter. (A nonzero value for λ would indicate that entanglement is beneficial in improving the overall precision of the optical gyroscope.) This implies that, in the absence of information regarding the measured phases, the calibration of small nuisance parameters alone will be hindered by the presence of correlated input states. It is only when the coupling between the two gyroscopes becomes significant that correlated input states and entanglement could be beneficial. This is in contrast to the case where the measured phases are known initially, Figs. 4(c) and 4(d), where the optimum value of the correlation coefficient is given as a function of the nuisance parameters for $\varphi_y = 0.66$ rad and $\varphi_z = 0.17$ rad. In the cases shown, the optimum value for λ is strongly dependent on θ

and δ . There is clearly a complicated relationship between the optimal degree of correlation between the two Sagnac interferometers, which varies significantly not only with θ and δ , but also with φ_y and φ_z .

Starting with unknown values for the measured phases, the results shown in Figs. 4(a) and 4(b) indicate that correlated inputs will not necessarily help to improve the accuracy of the estimates of the nuisance parameters, for small values of θ and δ at least. However, as the estimates of the Sagnac phases φ_y and φ_z improve, the results shown in Figs. 4(c) and 4(d) indicate that the optimum value for λ becomes strongly dependent on the values of the nuisance parameters. This implies that the optimal calibration process could involve an adaptive approach, with the selected value of λ being dependent on the estimated values and expected errors in φ_y and φ_z and the estimated nuisance parameters themselves. The problem becomes even more complicated when one takes into consideration that the optimum value of λ calculated in Fig. 4 is the value that minimizes the combination

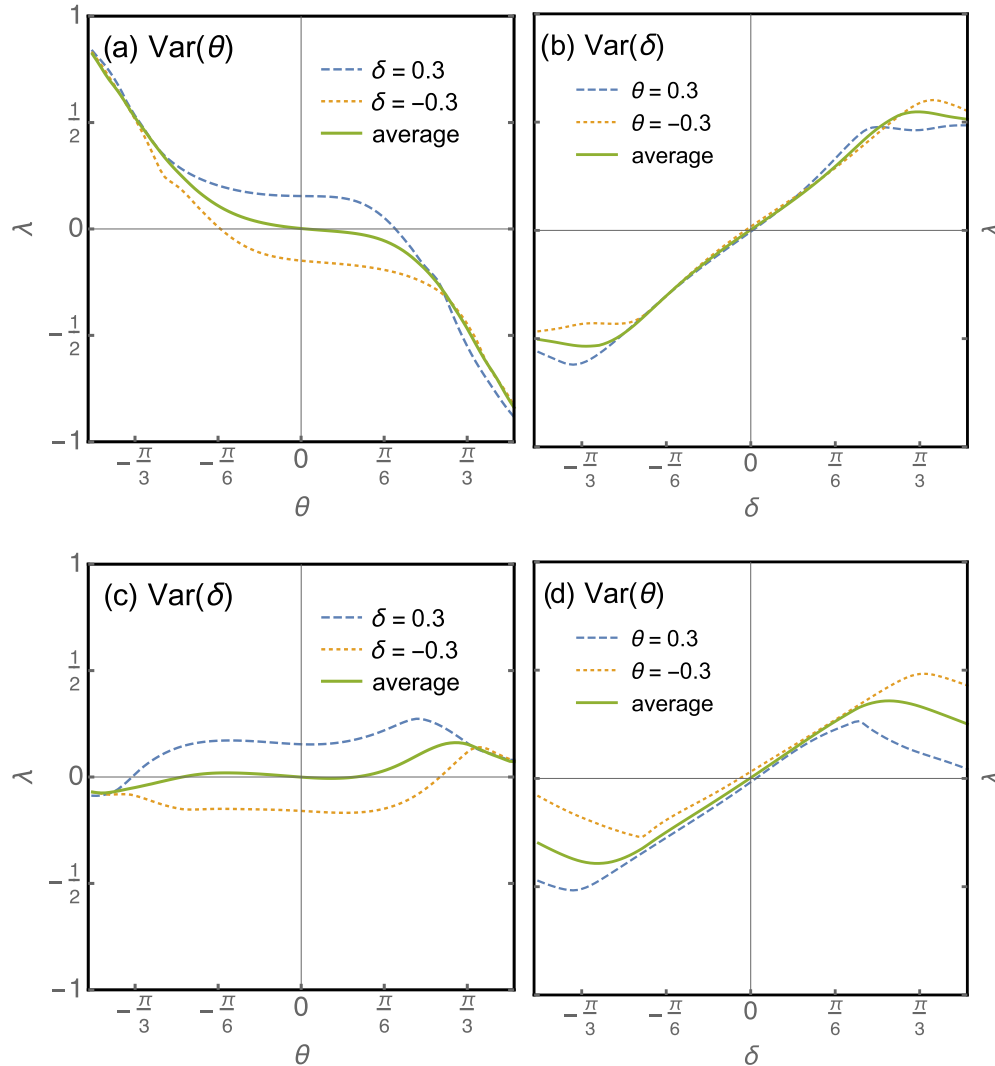


FIG. 5. The correlation coefficient λ that minimizes the variance in the estimates of the nuisance parameters for $(\Delta\hat{n})^2 = 10$, averaged over all values for the phases: (a) λ as a function of θ minimizing $\text{Var} \theta$, (b) λ as a function of δ minimizing $\text{Var} \delta$, (c) λ as a function of θ minimizing $\text{Var} \delta$, and (d) λ as a function of δ minimizing $\text{Var} \theta$ —each for several values of the other nuisance parameter and when averaged over values of $\delta, \theta = \pm 0.01, \pm 0.1, \pm 0.2$, and ± 0.3 rad.

$\text{Var} \varphi_y + \text{Var} \varphi_z$, i.e., the variance in the phase measurements, not the variance in the nuisance parameters. Figure 5 shows the behavior of the optimum correlation coefficient when minimizing the variance in the estimated value for each of the nuisance parameters, again averaged over the measured phases.

While the different optimization criteria shown in Fig. 5 do show qualitative and quantitative differences when compared with the results shown in Figs. 4(a) and 4(b), the results are not *inconsistent*—meaning that the optimal values for λ are zero or close to zero in each case, i.e., in the physically relevant regime where the misalignment parameters are small. It is only when δ is relatively large ($|\delta| \simeq 0.3$ rad) that the optimal value for the correlation is nonzero at $\theta \simeq 0.0$. This means that an adaptive calibration method should be feasible, although the precise form that it should take will depend on the criteria being optimized and the quality of the *a priori* knowledge regarding the rotation rates applied to the system, and the corresponding Sagnac phase measurements. Ideally, the calibration would

be performed using a rotation rate that had been selected to produce a minimum variance for the parameter estimates, and these vary significantly, as can be seen in Table I. Figure 6 shows the mean square errors in the four estimated parameters as functions of the applied Sagnac phases.

C. Three-dimensional gyroscopes

In our discussion so far we have ignored the third dimension. Here we give a simple argument that shows that the calibration process for quantum interferometers can be generalized to three dimensions in a straightforward way. Consider the three axes determined by three Sagnac gyroscopes. We pick one axis as a reference axis—such as the y axis in the discussion above. The remaining two axes deviate from a perfect triad in three angles, namely, the angles for the x and z axes with the y -axis, and the angle between the x axis and the z axis. These are three nuisance parameters θ (now a three-dimensional vector) arising from the physical tolerances

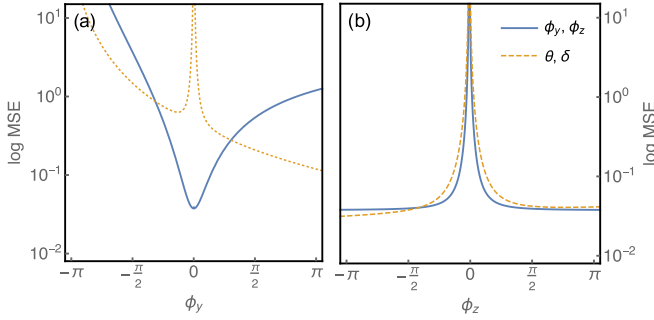


FIG. 6. The \log_{10} MSEs for φ as functions of (a) φ_y with $\varphi_z = 0.17$ rad, and (b) φ_z with $\varphi_y = 0.66$ rad, for $(\Delta\hat{n})^2 = 10$, $\theta = 0.02$ rad, and $\delta = 0.013$ rad. The blue solid line indicates the combined log MSE in φ_y and φ_z , while the orange dotted line indicates the combined log MSE in θ and δ . Calibration using specially selected φ_y and φ_z achieve the best results when adaptive strategies are used, i.e., when the values of φ_y and φ_z are chosen based on the inferred values of θ and δ .

inherent in any manufacturing process. Calibration requires that we determine these angles with high precision. During operation, any Sagnac phase measurements can be corrected by removing the coupling introduced by the nuisance parameters in post-processing.

The calibration consists of applying a well-defined rotation rate to the system, fixed with respect to an external frame, which leads to expected values of the phases φ_x , φ_y , and φ_z . We must estimate these phases with the gyroscope. We then rotate the gyroscope sensor through a known angle and repeat the measurements with the same rotation rate applied. For each independent set of phase measurements we take three readings, namely, the photon number difference in x , y , and z . The question is now if we can take enough *different* readings by applying these known rotations to the three-dimensional gyroscope several times, taking into account that each finite rotation is itself associated with a nuisance parameter, such as the parameter δ above. If we take K sets of readings, after each rotation about an arbitrary angle, δ_j ($1 \leq j \leq K$), we introduce—in principle—three new nuisance parameters for each δ_j . It is easy to see that the total number of parameters stays ahead of the total number of readings by three, and we will not be able to establish all parameter values unambiguously. To overcome this problem, we rotate the gyroscope around the same externally defined axis that determines the calibration signal ($\varphi_x, \varphi_y, \varphi_z$). This will incur only a single nuisance parameter for every rotation (after the first set of measurements), namely, the rotation angle, and it still allows us to rotate the gyroscope in any direction we wish. Suppose we take a set of measurements in K gyroscope orientations. We will have the three components of the applied rotation rate, three angles corresponding to the misalignment of the Sagnac axes, plus $K - 1$ rotation angles, giving a total of $K + 5$ parameters that need to be estimated from $3K$ measurements of the Sagnac phases. A successful calibration therefore requires

$$3K \geq K + 5, \quad (27)$$

which means that we need at least three sets of measurements. If we then wish to relate the gyroscope orientation to an external reference frame we need another three parameters, and this can be achieved by taking another set of measurements at a fourth orientation. This analysis implies that the generalization of our analysis to three dimensions does not pose a major obstacle—which is to be expected since similar processes are already used in inertial navigation systems and can include more complicated sequences of rotations and applied rotation rates to characterize other errors [30,31]—and there is no reason to believe that the main results given above for entangled input states would simplify significantly in moving from two to three dimensions. If anything, the optimization of the input states in three dimensions would be expected to be an even more complicated problem than the case presented here.

IV. CONCLUSIONS

We have studied the role of entanglement in the calibration and operation of an optical quantum gyroscope, relying on measurements of the Sagnac phase shift. The accuracy of the gyroscope is an important factor in inertial navigation systems, and any imperfections in the system must be well characterized for reliable operation as a rotation sensor. The interferometers are sensitive to rotation rates, which must be integrated with respect to time to generate orientation information, which can then be used to resolve acceleration measurements into a reference frame, thereby allowing changes in velocity and position to be determined.

For a perfectly aligned gyroscope, the optimal state in each individual interferometer will be highly entangled, NOON states for example, with no entanglement or other correlations between the interferometers. The Sagnac phase measurements are essentially independent, and the quantum Cramér-Rao bound can be achieved asymptotically. When the interferometers are not perfectly orthogonal to each other, the appearance of nuisance parameters (the misalignment of the sensors) will give rise to couplings between the measured values for the rotation rates. Knowing the values of these nuisance parameters allows the effect of these couplings to be reduced or removed, thereby improving the accuracy of the system. To this end, the system must be calibrated by taking readings from the gyroscope in a variety of known orientations. In two dimensions, we have demonstrated that the optimal states for such systems are dependent on the values of the nuisance parameters and the condition that is being optimized. Specifically, the states that would be optimal for the operation of the gyroscope as a sensor—i.e., the states that minimize the variance of the phase measurements—can be different from states that optimize the calibration of the nuisance parameters. In fact, the calibration of the optical quantum gyroscope is complicated by the fact that the variances of our estimators depend strongly on the values of the various parameters in the problem. In addition, we have found that the precision of the measurements of both the nuisance parameters and the applied signal is highly dependent on the amount of entanglement, as indicated by the correlation coefficient λ . These dependencies must be fully understood, as the use of

suboptimal probe states can make the calibration worse. Small improvements in the estimation of the nuisance parameters may seem to come at the expense of hard to engineer quantum probe states, but the nature of error accumulation in inertial navigation means that even modest gains in accuracy can lead to an important operational improvement of slower error divergence.

An important open question is how to establish the optimal quantum strategy for the calibration of the optical quantum gyroscope: what are the optimal quantum states to send into the three interferometers, and how should we divide our resources between the different probe states? Even when the measured observables commute, it is not immediately clear how the probe states must be chosen in order to maximize the information gain about the different parameters in the gyroscope. These questions will be addressed in future work.

ACKNOWLEDGMENTS

P.K. and J.F.R. would like to thank the Isaac Newton Institute for Mathematical Sciences, Cambridge, for support and hospitality during the Quantum Control Engineering programme (July-August 2014), where part of this work was undertaken. P.K. acknowledges EPSRC for funding via the Quantum Communications Hub, J.D. acknowledges EPSRC for funding via the NQIT Hub, and J.F.R. is a member of the UK NQT Hub in Sensors and Metrology and acknowledge funding from EPSRC (Grant No. EP/M013294/1).

APPENDIX: EXPLICIT FORMS FOR F_k

Here we give the explicit forms for F_k in Eq. (24) in the case where $(\Delta\hat{n}_y)^2 = (\Delta\hat{n}_z)^2 \equiv (\Delta\hat{n})^2$ and $C_{yz} = \lambda(\Delta\hat{n})^2$. For notational compactness, let $\gamma = \beta(\theta + \delta + \pi/2)$, $\beta_\theta \equiv \beta(\theta)$, and $\beta_\delta \equiv \beta(\delta)$. The functions F_k then become

$$F_y = [\gamma(\beta_\delta + \beta_\theta) \cos \theta - \beta_\delta \beta_\theta \sin(\delta + \theta)]^2 = (\det M)^2, \quad (\text{A1})$$

$$F_z = \gamma^2 [\beta_\delta^2 (2\lambda \sin \theta + \sin^2 \theta + 1) + 2\beta_\delta \beta_\theta \sin \delta (\sin \theta + \lambda) + \beta_\theta^2 (\sin^2 \delta + 1)] + \beta_\delta^2 \beta_\theta^2 [\cos^2(\delta + \theta) + 1] - 2\gamma \beta_\delta \beta_\theta \{\beta_\delta \cos(\delta + \theta)(\sin \theta + \lambda) + \beta_\theta [\sin \delta \cos(\delta + \theta) + \lambda]\}, \quad (\text{A2})$$

$$F_\theta = \gamma^2 \cos^2 \theta [(\sin \delta - \sin \theta)(\sin \delta - \sin \theta - 2\lambda) + 2] + \beta_\delta^2 [\frac{3}{2} - \lambda \sin(2\delta + 3\theta) + \sin \delta \sin(\delta + 2\theta) + \frac{1}{2} \cos(2\delta + 4\theta) + \lambda \sin \theta] - \gamma \beta_\delta \cos \theta \{\lambda [\cos(2\delta + \theta) - 3 \cos(\delta + 2\theta) + \cos \delta + \cos \theta] + 3 \sin(\delta + \theta) + \sin(2\delta + 2\theta) - \sin(\delta + 3\theta) - \sin 2\delta\}, \quad (\text{A3})$$

$$F_\delta = \gamma^2 \cos^2 \theta [(\sin \delta - \sin \theta)(\sin \theta - \sin \delta + 2\lambda) - 2] - \beta_\theta^2 \{(\sin^2 \delta + 1) \sin^2(\delta + \theta) + \cos^2 \theta [\cos^2(\delta + \theta) + 1] - 2 \cos \theta \sin(\delta + \theta) [\sin \delta \cos(\delta + \theta) + \lambda]\} + \gamma \cos \theta \beta_\theta \{\lambda [\cos(2\delta + \theta) + \cos(\delta + 2\theta) + \cos \delta - 3 \cos \theta] + 3 \sin(\delta + \theta) + \cos(2\theta + 2\delta) \sin(\theta - \delta) - \sin 2\delta\}. \quad (\text{A4})$$

-
- [1] A. Crespi, M. Lobino, J. C. F. Matthews, A. Politi, C. R. Neal, R. Ramponi, R. Osellame, and J. L. O'Brien, *Appl. Phys. Lett.* **100**, 233704 (2012).
- [2] M. A. Taylor, J. Janousek, V. Daria, J. Knittel, B. Hage, H. A. Bachor, and W. P. Bowen, *Nat. Photonics* **7**, 229 (2013).
- [3] The LIGO Scientific Collaboration, *Nat. Phys.* **7**, 962 (2011).
- [4] V. Giovannetti, S. Lloyd, and L. Maccone, *Nat. Photonics* **5**, 222 (2011).
- [5] M. Tsang, *New J. Phys.* **15**, 073005 (2013).
- [6] W. Dür, M. Skotiniotis, F. Fröwis, and B. Kraus, *Phys. Rev. Lett.* **112**, 080801 (2014).
- [7] G. Arrad, Y. Vinkler, D. Aharonov, and A. Retzker, *Phys. Rev. Lett.* **112**, 150801 (2014).
- [8] E. M. Kessler, I. Lovchinsky, A. O. Sushkov, and M. D. Lukin, *Phys. Rev. Lett.* **112**, 150802 (2014).
- [9] L. Pezzé and A. Smerzi, *Phys. Rev. Lett.* **100**, 073601 (2008).
- [10] M. Kacprowicz, R. Demkowicz-Dobrzański, W. Wasilewski, K. Banaszek, and I. A. Walmsley, *Nat. Photonics* **4**, 357 (2010).
- [11] G. Y. Xiang, B. L. Higgins, D. W. Berry, H. M. Wiseman, and G. J. Pryde, *Nat. Photonics* **5**, 43 (2011).
- [12] A. M. Marino, N. V. Corzo Trejo, and P. D. Lett, *Phys. Rev. A* **86**, 023844 (2012).
- [13] P. C. Humphreys, M. Barbieri, A. Datta, and I. A. Walmsley, *Phys. Rev. Lett.* **111**, 070403 (2013).
- [14] J.-D. Yue, Y.-R. Zhang, and H. Fan, *Sci. Rep.* **4**, 5933 (2014).
- [15] P. A. Knott, T. J. Proctor, K. Nemoto, J. A. Dunningham, and W. J. Munro, *Phys. Rev. A* **90**, 033846 (2014).
- [16] P. J. D. Crowley, A. Datta, M. Barbieri, and I. A. Walmsley, *Phys. Rev. A* **89**, 023845 (2014).
- [17] S. Kay, *Fundamentals of Statistical Signal Processing, Volume I: Estimation Theory* (Prentice-Hall, Englewood Cliffs, NJ, 1993).
- [18] C. W. Helstrom, *J. Stat. Phys.* **1**, 231 (1969).
- [19] S. L. Braunstein and C. M. Caves, *Phys. Rev. Lett.* **72**, 3439 (1994).
- [20] H. P. Yuen and M. Lax, *IEEE Trans. Inf. Theory* **19**, 740 (1973).
- [21] C. W. Helstrom and R. S. Kennedy, *IEEE Trans. Inf. Theory* **20**, 16 (1974).
- [22] M. G. A. Paris, *Int. J. Quantum Inf.* **7**, 125 (2009).
- [23] R. D. Gill and M. Guță, *From Probability to Statistics and Back: High-Dimensional Models and Processes (A Festschrift in Honor of Jon A. Wellner)* (Inst. Math. Stat., Beachwood, Ohio, 2013), Vol. 9, p. 105.
- [24] C. Macchiavello, *Phys. Rev. A* **67**, 062302 (2003).
- [25] M. A. Ballester, *Phys. Rev. A* **70**, 032310 (2004).

- [26] M. A. Ballester, *Phys. Rev. A* **69**, 022303 (2004).
- [27] H. Imai and A. Fujiwara, *J. Phys. A* **40**, 4391 (2007).
- [28] M. G. Genoni, M. G. A. Paris, G. Adesso, H. Nha, P. L. Knight, and M. S. Kim, *Phys. Rev. A* **87**, 012107 (2013).
- [29] Y. Gao and H. Lee, *Eur. Phys. J. D* **68**, 347 (2014).
- [30] P. Savage, *J. Guid. Control. Dyn.* **21**, 19 (1998).
- [31] X. N. P. Aggarwal, Z. Syed, and N. El-Sheimy, *J. Navigation* **61**, 323 (2008).
- [32] P. Lefèvre, *The Fiber Optic Gyroscope* (Artech House, Boston/London, 1993).
- [33] A. Tartaglia and M. L. Ruggiero, *Am. J. Phys.* **83**, 427 (2015).
- [34] B. Culshaw, *Meas. Sci. Technol.* **17**, R1 (2006).
- [35] S. Gammelmark and K. Mølmer, *Phys. Rev. Lett.* **112**, 170401 (2014).
- [36] S. Pang and T. A. Brun, *Phys. Rev. A* **90**, 022117 (2014).
- [37] P. Kok and B. W. Lovett, *Introduction to Optical Quantum Information Processing* (Cambridge University Press, Cambridge, UK, 2010).