

RESEARCH ARTICLE

Open Access



RUNX1 induces DNA replication independent active DNA demethylation at *SPI1* regulatory regions

Shubham Goyal, Takahiro Suzuki, Jing-Ru Li, Shiori Maeda, Mami Kishima, Hajime Nishimura, Yuri Shimizu and Harukazu Suzuki*

Abstract

Background: *SPI1* is an essential transcription factor (TF) for the hematopoietic lineage, in which its expression is tightly controlled through a –17-kb upstream regulatory region and a promoter region. Both regulatory regions are demethylated during hematopoietic development, although how the change of DNA methylation status is performed is still unknown.

Results: We found that the ectopic overexpression of RUNX1 (another key TF in hematopoiesis) in HEK-293T cells induces almost complete DNA demethylation at the –17-kb upstream regulatory region and partial but significant DNA demethylation at the proximal promoter region. This DNA demethylation occurred in mitomycin-C-treated nonproliferating cells at both regulatory regions, suggesting active DNA demethylation. Furthermore, ectopic RUNX1 expression induced significant endogenous *SPI1* expression, although its expression level was much lower than that of natively *SPI1*-expressing monocyte cells.

Conclusions: These results suggest the novel role of RUNX1 as an inducer of DNA demethylation at the *SPI1* regulatory regions, although the mechanism of RUNX1-induced DNA demethylation remains to be explored.

Keywords: *SPI1*, RUNX1, DNA demethylation, Endogenous expression

Background

SPI1 is a hematopoietic lineage-specific TF belonging to the ETS family [1]. It plays an important role in the development of myeloid and lymphoid cells and is highly expressed in monocytes [2, 3]. The expression of *SPI1* is regulated by the combined activity of a proximal promoter and an upstream regulatory element (URE) located –17-kb upstream of the transcription start site (also known as the distal promoter region) in human [3, 4]. Deletion of the URE region contributes to the exacerbation of acute myeloid leukemia (AML) or erythroleukemia [5, 6]. The *SPI1* regulatory regions are differentially methylated in *SPI1*-expressing and nonexpressing cell lines [7, 8]. This differential pattern is also maintained

during hematopoietic differentiation, in which ES cells are hypermethylated while hematopoietic stem cells become hypomethylated [7–9]. Meanwhile, abnormal hypermethylation of the *SPI1* regulatory regions is frequently observed in myeloma cell lines with downregulated *SPI1* [10]. Thus, this methylation change seems to be important for *SPI1* expression. However, no molecular mechanism behind the change in DNA methylation status at *SPI1* regulatory regions has been reported yet.

RUNX1 is another TF that is essential for the regulation and maintenance of mammalian hematopoiesis [11]. A previous study reported that RUNX1 regulates *SPI1* at both transcriptional and epigenetic levels [9]. RUNX1 binding at the conserved sites in the URE of *SPI1* is critical for the onset of *SPI1* expression during hematopoietic stem cell formation, making *SPI1* the direct downstream target of RUNX1 [12]. At the pre-hematopoietic or hemangioblast stage, the inception of RUNX1 expression

*Correspondence: harukazu.suzuki@riken.jp
Division of Genomic Technologies, RIKEN Center for Life Science Technologies, 1-7-22 Suehiro-cho, Tsurumi-ku, Yokohama, Kanagawa 230-0045, Japan

induces chromatin remodeling at the regulatory regions of *SPI1*, in which the binding of RUNX1 to the *SPI1* regulatory region is essential [9]. Moreover, several studies have revealed that chromatin remodeling is coupled with DNA demethylation during embryonic development [13]. Therefore, we hypothesize that RUNX1 may also be involved in recruiting the DNA methylation status change at the *SPI1* regulatory regions.

Here, we describe that the ectopic expression of RUNX1 in HEK-293T cells induces DNA demethylation at the two functionally active regulatory regions of *SPI1* in a replication-independent manner.

Results

RUNX1 overexpression induced DNA demethylation at *SPI1* -17-kb URE

SPI1 contains two regulatory regions; one is the -17-kb URE that lies upstream of the transcription start site (also known as the distal promoter region) and the other is the proximal promoter region (Fig. 1). While the -17-kb URE contains three RUNX1 binding sites (Fig. 2a), the proximal promoter region does not contain any such sites [14]. To analyze how RUNX1 expression affects the DNA methylation status of *SPI1* regulatory regions, we first focused on the -17-kb URE. We transduced RUNX1-overexpressing lentivirus into HEK-293T cells, a cell line that does not express RUNX1, followed by DNA methylation analysis by bisulfite sequencing. We observed drastic DNA demethylation in RUNX1-overexpressing HEK-293T cells (Fig. 2b). This DNA demethylation appeared to be RUNX1-specific because we did not see any of these changes in either MCS-transduced (multiple cloning sites: MCS) or wild-type HEK-293T cells. The region as a whole was significantly demethylated ($p < 0.001$)

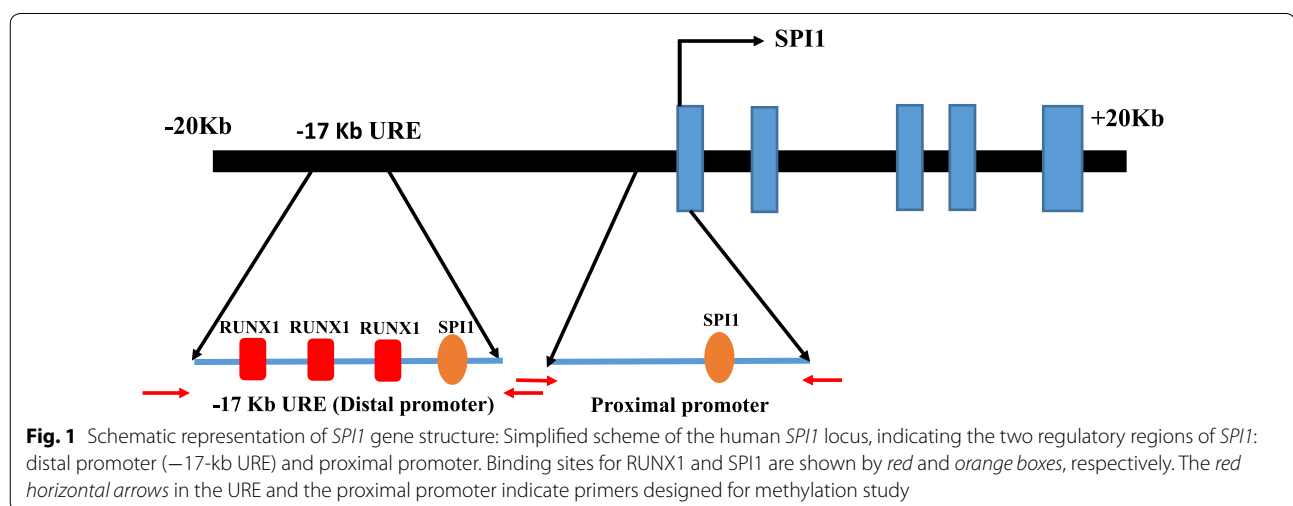
(Fig. 2c). The DNA demethylation of all individual CpG sites investigated at the -17-kb URE was also found to be significant ($p < 0.005$) (Fig. 2d).

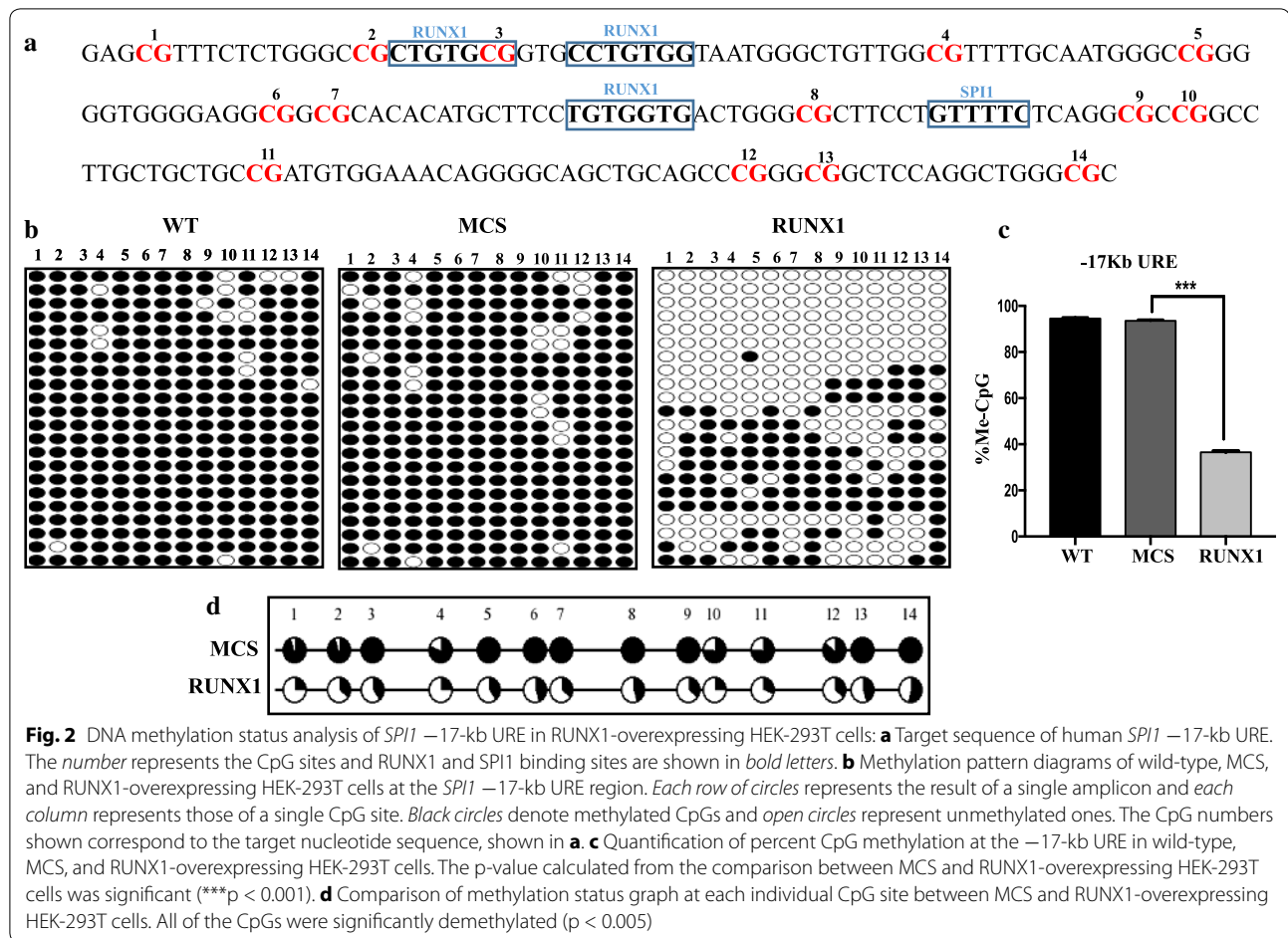
RUNX1 overexpression induced partial DNA demethylation at *SPI1* proximal promoter

The proximal promoter region of *SPI1* does not contain any binding site for RUNX1 [14] (Fig. 3a); therefore, we wondered whether RUNX1 can still induce any change in DNA methylation in this region. Our results showed that RUNX1 can induce partial demethylation in the proximal promoter region, with about 30% of CpGs being demethylated (Fig. 3b). Although the demethylation was incomplete, the region as a whole was significantly demethylated ($p < 0.0001$; Fig. 3c) and the change at most of the CpG sites was also found to be significant ($p < 0.005$; Fig. 3d), in comparison to that of MCS-transduced cells.

Molecular mechanism of RUNX1-induced DNA demethylation at *SPI1* regulatory regions

DNA demethylation can be active or passive in nature, where active demethylation occurs by the enzymatic activity of TET enzymes in the absence of replication, while passive demethylation occurs slowly during several rounds of replication [15]. To identify the type of RUNX1-induced demethylation at both *SPI1* regulatory regions, we used mitomycin-C to arrest cell growth at the G₁ phase. Different concentrations of mitomycin-C were individually tested to identify the concentration when the ratio of Edu positive cells was zero (no DNA synthesis, see “Methods”) (Fig. 4a). We observed drastic DNA demethylation in RUNX1-transduced cells at the *SPI1* -17-kb URE region, even upon mitomycin-C treatment, which would prevent passive DNA





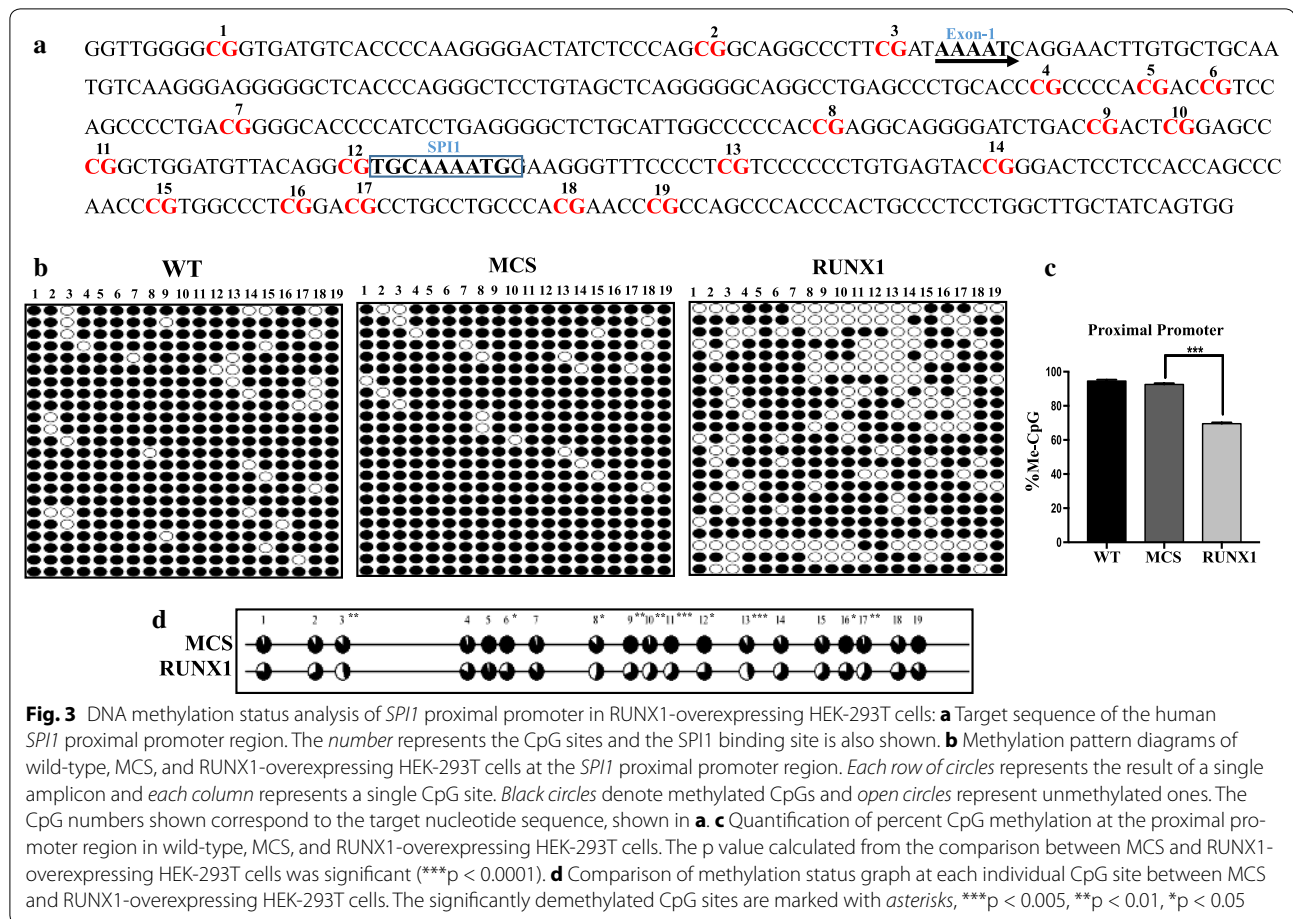
demethylation (Fig. 4b). The statistical analysis revealed that the region as a whole was significantly demethylated (p < 0.0001) (Fig. 4c). Significant DNA demethylation was found at each CpG site investigated (Fig. 4d), the same as in the RUNX1-overexpressing cells not treated with mitomycin-C, as shown in Fig. 2d. Interestingly, we also observed RUNX1-induced active DNA demethylation at the proximal promoter region in mitomycin-C-treated cells (Fig. 4e–g). These results demonstrate the ability of RUNX1 to induce active DNA demethylation at both *SPI1* regulatory regions. Recent studies in zebrafish have highlighted that RUNX1 induces the expression of *dnmt3bb.1*, a DNMT3 paralog in this animal model [16]. Therefore, we next examined whether RUNX1 overexpression enhanced the expression of genes encoding enzymes that are known to be involved in both DNA methylation and demethylation. Specifically, we compared the expression levels of *DNMT1*, *DNMT3A* and *3B*, *TET1-3*, and *IDH1* and *IDH2* between MCS and RUNX1-transduced cells. However, no difference in the expression of these genes was observed (Fig. 4h).

RUNX1 induces significant *SPI1* expression, but much less than in monocytes

DNA methylation at gene regulatory regions generally suppresses gene expression, possibly by blocking transcription factor binding at those regions. To examine whether RUNX1-induced DNA demethylation at *SPI1* regulatory regions can affect *SPI1* endogenous expression, we measured *SPI1* expression in RUNX1-overexpressing HEK-293T cells by qRT-PCR. *SPI1* endogenous expression was significantly (p < 0.005) induced by the RUNX1 ectopic expression, which was estimated to involve a 12-fold upregulation, from the differences in Δ Ct values (Fig. 5). However, the *SPI1* expression level for RUNX1-overexpressing HEK-293T cells was still far less than that of monocytes; only 3% of *SPI1* mRNA expression was estimated.

Discussion

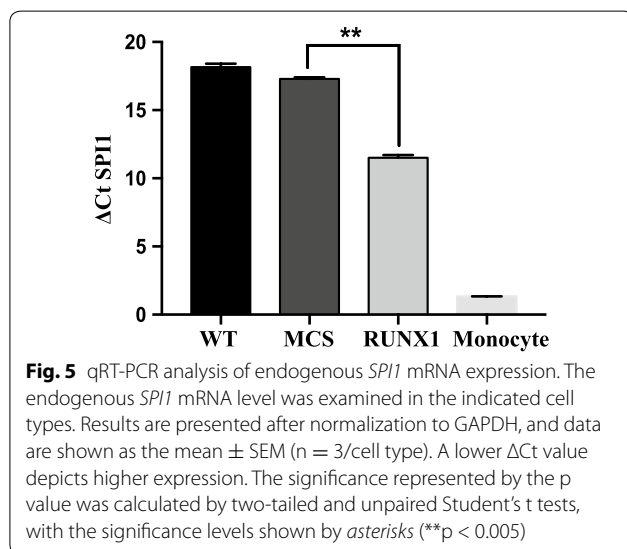
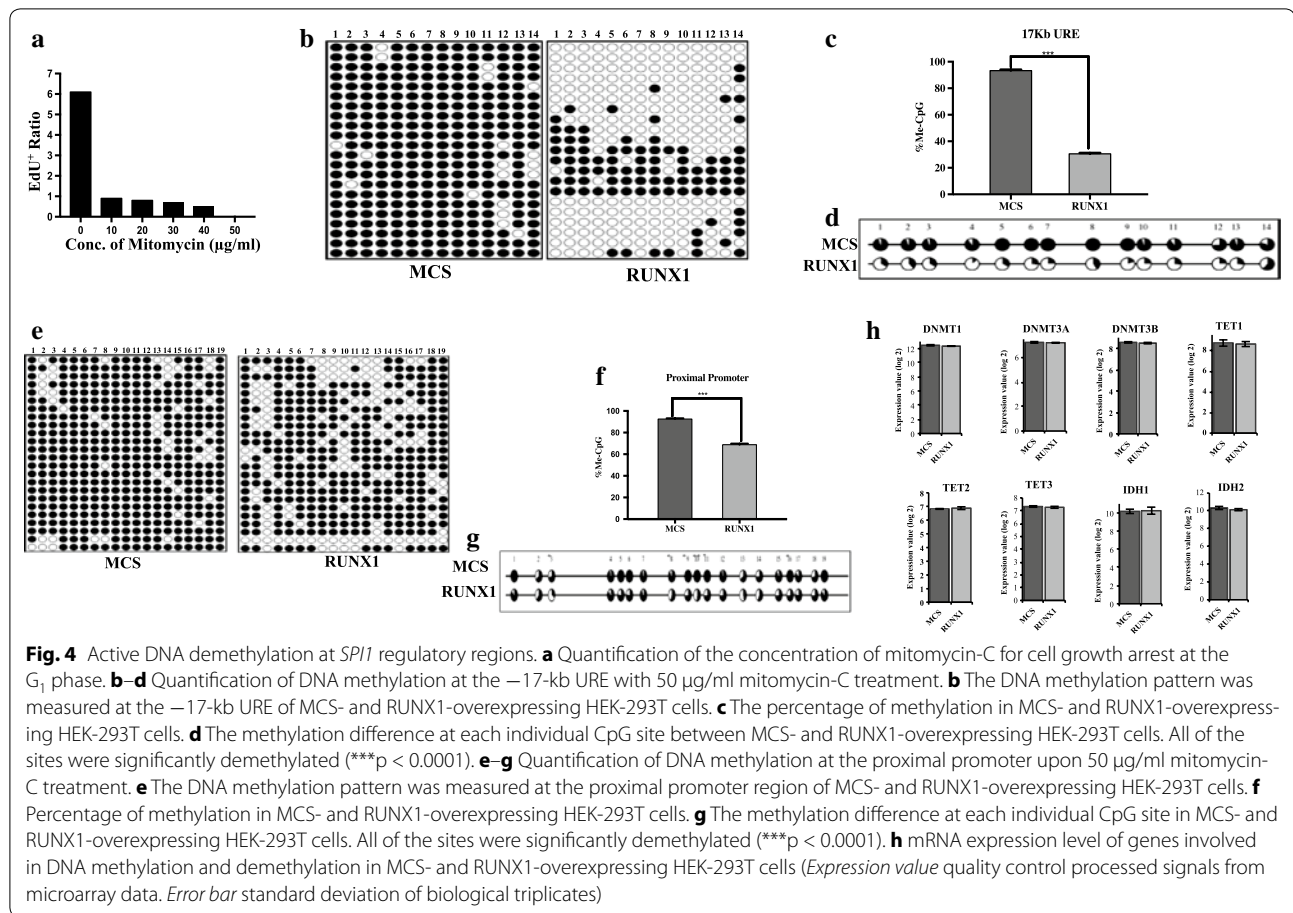
In this study, we found that the ectopic expression of RUNX1 in wild-type HEK-293T cells converts the methylation status of both *SPI1* regulatory regions from hypermethylated to hypomethylated; the results also



showed that the induced demethylation was replication-independent active DNA demethylation. Further, RUNX1 overexpression did not change gene expression of enzymes involved in both DNA methylation and demethylation. It has been reported that chromatin remodeling of the *SP11* URE region in hemangioblasts is induced by the binding of RUNX1, which also accompanies the DNA demethylation of this region [9]. This suggests that RUNX1 binding directly recruits the DNA demethylating machinery. Actually, several TFs have recently shown to be involved in DNA demethylation by recruiting DNA demethylation machinery [17]. On the other hand, the proximal promoter region revealed partial but significant DNA demethylation, although it does not contain any binding sites for RUNX1 and neither any mechanism of its binding is known [12, 14]. Thus, it was interesting to ponder how this replication-independent active DNA demethylation occurs at the proximal promoter region of *SP11* by the overexpression of RUNX1. Previous chromatin immunoprecipitation (ChIP) data have shed light on the binding of various transcription factors in the URE and proximal promoter regions [8]. Therefore,

we speculate that other RUNX1-regulated transcription factor(s) may also be able to induce DNA demethylation at both regulatory regions. Thus, we can conclude that RUNX1 could be directly or indirectly responsible for inducing DNA demethylation at the *SP11* regulatory regions, although the actual process remains to be confirmed.

Our study also showed that RUNX1 overexpression is not sufficient for inducing the higher level of endogenous *SP11* expression in HEK-293T cells. The partial demethylation at the proximal promoter region may be responsible for the low level of *SP11* expression. In fact, the proximal promoter region of *SP11* is completely hypomethylated in monocytes, in which *SP11* is expressed at a higher level [18, 19]. Previous reports also suggest the positive correlation between DNA demethylation at gene regulatory regions and gene expression, revealing that active genes are generally hypomethylated while inactive genes are generally hypermethylated at their promoter regions [7, 20]. Furthermore, the cells with high *SP11* expression regulate this expression by forming an autoregulatory loop between its URE and the proximal promoter region [4,



that are expressed in *SPI1*-expressing hematopoietic cells could also be necessary to induce higher endogenous expression of *SPI1*.

We used HEK-293T cells in this study because they are from a cell line that does not express RUNX1. The propensity of these cells to undergo transfection, their availability, and the possibility of avoiding passage biasness during analysis also make them easy to use. Since our results are derived from nonhematopoietic cells by using an artificial overexpression system, it would be preferable for our results to be evaluated further using hematopoietic cell lines in which RUNX1 and *SPI1* are endogenously expressed. However, DNA demethylation at *SPI1* regulatory regions already occurs at the hematopoietic stem cell stage at which RUNX1 is expressed. As the next step, it may be necessary to perform such evaluation in hematopoietic cell lines under specific conditions or with gene manipulation.

Conclusions

To our knowledge, this is the first study evaluating the potential role of RUNX1 as a demethylating inducer. Our results provide a hint about how demethylation occurs at *SPI1* regulatory regions.

21], which are in close proximity to each other [22]. Thus, our data suggest that the autoregulatory loop may not form well due to incomplete demethylation at the proximal promoter. The presence of other transcription factors

Methods

Cell culture and RUNX1 over expression

HEK-293T cells, a human embryonic cell line provided by Riken Cell Bank (RCB), were cultured in High-Glucose Dulbecco's Modified Eagle Medium (DMEM, Wako, Japan) supplemented with 10% fetal bovine serum (Lonza, Basel, Switzerland) and 2 mM penicillin–streptomycin (Sigma-Aldrich, St. Louis, MO, USA) at 37 °C in 5% CO₂.

RUNX1 overexpression in HEK-293T cells was carried out by using the lentivirus transduction method. The lentivirus for RUNX1 overexpression and its control MCS were prepared in a mixture of packaging constructs, pCMV-VSV-G-RSV-Rev and pCAG-HIVgp (provided by RIKEN BRC) in accordance with a previously reported protocol [19]. HEK-293T cells (1×10^6 cells per well) were seeded in a poly-D-lysine-coated 12-well plate, followed by transduction on the second day by adding 8 µg/ml polybrene and 10 multiplicity of infection (MOI) of lentivirus in each well. One day after the transduction, the medium was replaced with fresh DMEM medium containing 1 µg/ml puromycin (Thermo Fisher Scientific, Waltham, MA, USA) for the selection of transduced cells. Cells were harvested 7 days after the transduction. Wild-type HEK-293T cells were also kept as a control.

Bisulfite sequencing

Genomic DNA was isolated from the harvested cells using an All Prep DNA/RNA Mini Kit (Qiagen, Hilden, Germany), in accordance with the manufacturer's protocol. The DNA quality was assessed by using a Nanodrop 1000 (Thermo Fisher Scientific, Waltham, MA, USA). DNA bisulfite conversion and purification were performed in accordance with the protocol of the EZ DNA Methylation Gold Kit (Zymo Research, Irvine, CA, USA). For amplification of the –17-kb URE (326 bp) and the proximal promoter region (448 bp), previously reported PCR primers [10] were used (Table 1). The amplified PCR products were checked on a 1.5% agarose gel, purified using the PCR purification kit (Qiagen, Hilden, Germany), and then cloned using the Target Clone plus kit (Toyobo, Osaka, Japan). Plasmid DNA was isolated using the QIAprep 96 Turbo miniprep kit (Qiagen, Hilden, Germany) and sequenced in an ABI 3730xl DNA Analyzer. The sequence analysis, including the calculation of methylation percentage, methylation pattern change, and comparison at each CpG site, was performed using the online software QUMA (<http://quma.cdb.riken.jp/>).

Cell cycle arrest

HEK-293T cells (2×10^6 cells per well) were plated into a six-well plate, treated with different concentrations of mitomycin-C (Sigma-Aldrich, St. Louis, MO), and

Table 1 List of primers used for bisulfite PCR and qRT-PCR

Bisulfite primers	
<i>SPI1</i> proximal promoter (Fwd)	GAGATTTTTTGTATGATAGTGAAGA
<i>SPI1</i> proximal promoter (Rv)	TAACTCCCACATAAACAACCA
<i>SPI1</i> –17-kb URE (Fwd)	GTTGGATATTTTTTGGAGGTTTGG
<i>SPI1</i> –17-kb URE (Rv)	TAAACCTAAAACCTACTAAACCA
Real-time primers	
GAPDH (Fwd)	GAAATCCCATCACCATCTTCCAGG
GAPDH (Rv)	GAGCCCCAGCCTTCTCCATG
<i>SPI1</i> (Fwd)	TCCTGAGGGGCTCTGCATT
<i>SPI1</i> (Rv)	TGTCATAGGGCACCAGTCTT

incubated for 4 h at 37 °C in 5% CO₂. To check cell cycle arrest (at the G₁ phase), the proliferation assay was performed by following the Click-iT[®] EdU Cytometry Cell Proliferation Assay protocol (Thermo Fisher Scientific, Waltham, MA, USA); for assessment, FACS was used. After the confirmation of cell cycle arrest at 50 µg/ml mitomycin-C, the cells were plated and transduced with RUNX1 lentivirus on the second day by following the above-mentioned protocol. Wild-type 293T cells were also treated with 50 µg/ml mitomycin-C and transduced with MCS, which were kept as a control.

DNA microarray

Total RNA was isolated by using the Nucleospin[®] RNA kit protocol (Macherey–Nagel, Germany). Five hundred nanograms of total RNA was amplified using the Ambion total RNA amplification kit (Ambion, Carlsbad, CA), followed by hybridization of the synthesized cRNA with the Human HT-12 v4 Expression BeadChip kit (Illumina, San Diego, CA, USA), in accordance with the manufacturer's protocol. Scanning of the chip was performed using Illumina BeadScan and BeadStudio (version 3.1). Data were processed with a package from Bioconductor (lumi) [23, 24] using the free software environment R (<http://www.r-project.org/>). The microarray data has been registered in gene expression omnibus (<https://www.ncbi.nlm.nih.gov/geo/>) in NCBI (GSE95308).

qRT-PCR

Total RNA was isolated using the Nucleospin[®] RNA kit protocol (Macherey–Nagel, Germany). Reverse transcription of total RNA was performed using the Prime Script RT kit (Takara, Takara Bio, Japan); qRT-PCR was performed with the ABI PRISM[®] 7500 sequence detection system (Applied Biosystems, USA) using SYBR Premix Ex Taq[™] II (Tli RNaseH plus, Takara Bio, Japan) and gene-specific primers for *SPI1* and *GAPDH* (Table 1). PCR cycling conditions consisted of initial denaturation at 95 °C for 10 s, followed by 40 cycles at 95 °C for 5 s and 60 °C for 30 s. Data was analyzed using the 2^{–ΔΔCt}

method [25]. Human peripheral blood CD14⁺ monocytes (Lonza, Basel, Switzerland) were kept as a positive control for the comparison of *SPI1* expression.

Statistical analysis

All of the statistical analyses for DNA methylation status and calculation of methylation percentage were performed using the online quantification tool QUMA. The significance of differences between the transduced and untransduced cells was determined by using unpaired, two-tailed, and Student's tests (t test), where $p < 0.05$ was considered significant.

Abbreviations

TF: transcription factor; URE: upstream regulatory element; AML: acute myeloid leukemia; MCS: multiple cloning sites; ChIP: chromatin immunoprecipitation; MOI: multiplicity of infection.

Authors' contributions

Conceived and designed the experiments: SG, TS, and HS. Performed the experiments: SG, HN, MK, SM, YS. Analyzed the data: SG, TS, HS, and JRL. Contributed reagents/materials/analysis tools: SG, TS, JRL, HN, MK, SM, YS. Wrote the paper: SG, HS. All authors read and approved the final manuscript.

Acknowledgements

The authors wish to thank RIKEN-CLST for all the facilities.

Competing interests

The authors declare that they have no competing interests.

Availability of data and materials

All the data generated during this study are included in this article. The microarray data generated in this article is available in the gene expression omnibus of NCBI [GSE95308, <https://www.ncbi.nlm.nih.gov/geo/>].

Funding

This work was supported by a research grant from MEXT for RIKEN Center for Life Science Technologies. The funding agency has no role in the design of study, data collection, data interpretation, decision to publish, or preparation of the manuscript.

Publisher's Note

Springer Nature remains neutral with regard to jurisdictional claims in published maps and institutional affiliations.

Received: 2 November 2016 Accepted: 28 March 2017

Published online: 04 April 2017

References

- Iwasaki H, Somoza C, Shigematsu H, Duprez E, Iwasaki-Arai J, Mizuno S-I, Arinobu Y, Geary K, Zhang P, Dayaram T, et al. Distinctive and indispensable roles of PU.1 in maintenance of hematopoietic stem cells and their differentiation. *Blood*. 2005;106:1590–600.
- Miyamoto T, Iwasaki H, Reizis B, Ye M, Graf T, Weissman IL, Akashi K. Myeloid or lymphoid promiscuity as a critical step in hematopoietic lineage commitment. *Dev Cell*. 2002;3:137–47.
- Chen HM, Zhang P, Voso MT, Hohaus S, Gonzalez DA, Glass CK, Zhang DE, Tenen DG. Neutrophils and monocytes express high levels of PU.1 (Spi-1) but not Spi-B. *Blood*. 1995;85:2918–28.
- Okuno Y, Huang G, Rosenbauer F, Evans EK, Radomska HS, Iwasaki H, Akashi K, Moreau-gachelin F, Li Y, Tenen DG. Potential autoregulation of transcription factor PU.1 by an upstream regulatory element. *Mol Cell Biol*. 2005;25:2832–45.
- Durual S, Rideau A, Ruault-Jungblut S, Cossali D, Beris P, Piguet V, Matthes T. Lentiviral PU.1 overexpression restores differentiation in myeloid leukemic blasts. *Leukemia*. 2007;21:1050–9.
- Curik N, Burda P, Vargova K, Pospisil V, Belickova M, Vlckova P, Savvulidi F, Necas E, Hajkova H, Haskovec C, et al. 5-azacytidine in aggressive myelodysplastic syndromes regulates chromatin structure at PU.1 gene and cell differentiation capacity. *Leukemia*. 2012;26:1804–11.
- Amaravadi L, Klemsz MJ. DNA methylation and chromatin structure regulate PU.1 expression. *DNA Cell Bio*. 1999;18:875–84.
- Hoogenkamp M, Krysinska H, Ingram R, Huang G, Barlow R, Clarke D, Ebralidze A, Zhang P, Tagoh H, Cockerill PN, et al. The Pu.1 locus is differentially regulated at the level of chromatin structure and noncoding transcription by alternate mechanisms at distinct developmental stages of hematopoiesis. *Mol Cell Biol*. 2007;27:7425–38.
- Hoogenkamp M, Lichtinger M, Krysinska H, Lancrin C, Clarke D, Williamson A, Mazzarella L, Ingram R, Jorgensen H, Fisher A, et al. Early chromatin unfolding by RUNX1: a molecular explanation for differential requirements during specification versus maintenance of the hematopoietic gene expression program. *Blood*. 2009;114:299–309.
- Tatetsu H, Ueno S, Hata H, Yamada Y, Takeya M, Mitsuya H, Tenen DG, Okuno Y. Down-regulation of PU.1 by methylation of distal regulatory elements and the promoter is required for myeloma cell growth. *Cancer Res*. 2007;67:5328–36.
- Ichikawa M, Goyama S, Asai T, Kawazu M, Nakagawa M, Takeshita M, Chiba S, Ogawa S, Kurokawa M. AML1/RUNX1 negatively regulates quiescent hematopoietic stem cells in adult hematopoiesis. *J Immunol*. 2008;180:4402–8.
- Huang G, Zhang P, Hirai H, Elf S, Yan X, Chen Z, Koschmieder S, Okuno Y, Dayaram T, Growney JD, et al. PU.1 is a major downstream target of AML1 (RUNX1) in adult mouse hematopoiesis. *Nat Genet*. 2008;40:51–60.
- Sakurai K, Hoang M, Kim Y, Mathiyakom N, Kim Y. DNA methylation and chromatin dynamics in embryonic stem cell regulation. *OA Stem Cells*. 2014;2:1–8.
- Lichtinger M, Ingram R, Hannah R, Müller D, Clarke D, Assi SA, Lie-A-Ling M, Noailles L, Vijayabaskar MS, Wu M, et al. RUNX1 reshapes the epigenetic landscape at the onset of haematopoiesis. *EMBO J*. 2012;31:4318–33.
- Hackett JA, Surani MA. DNA methylation dynamics during the mammalian life cycle. *Philos Trans R Soc B*. 2013;368:20110328.
- Gore AV, Athans B, Iben JR, Johnson K, Russanova V, Castranova D, Pham VN, Butler MG, et al. Epigenetic regulation of hematopoiesis by DNA methylation. *eLife*. 2016;5:e11813.
- Marchal C, Miotto B. Emerging concept in DNA methylation: role of transcription factors in shaping DNA methylation patterns. *J Cell Physiol*. 2015;230:743–51.
- Rica DL, Rodríguez-Ubrea J, García M, Islam AB, Urquiza JM, Hernando H, Christensen J, Helin K, Gómez-Vaquero C, Ballestar E. PU.1 target genes undergo Tet2-coupled demethylation and DNMT3b-mediated methylation in monocyte-to-osteoclast differentiation. *Genome Biol*. 2013;14:R99.
- Suzuki T, Nakano-Ikegaya M, Yabukami-Okuda H, de Hoon M, Severin J, Saga-Hatano S, Shin JW, Kubosaki A, Simon C, Hasegawa Y, et al. Reconstruction of monocyte transcriptional regulatory network accompanies monocytic functions in human fibroblasts. *PLoS ONE*. 2012;7:e33474.
- Wagner JR, Busche S, Ge B, Kwan T, Pastinen T, Blanchette M. The relationship between DNA methylation, genetic and expression inter-individual variation in untransformed human fibroblasts. *Genome Biol*. 2014;15:R37.
- Staber PB, Zhang P, Ye M, Welner RS, Levantini E, Di Ruscio A, Ebralidze AK, Bach C, Zhang H, Zhang J, et al. The Runx-PU.1 pathway preserves normal and AML/ETO9a leukemic stem cells. *Blood*. 2014;124:2391–9.
- Ebralidze AK, Guibal FC, Steidl U, Ebralidze AK, Guibal FC, Steidl U, Zhang P, Lee S, Bartholdy B, Jorda MA, et al. PU.1 expression is modulated by the balance of functional sense and antisense RNAs regulated by a shared cis-regulatory element by the balance of functional sense and antisense RNAs regulated by a shared cis-regulatory element. *Genes Dev*. 2008;22:2085–92.
- Lin SM, Du P, Huber W, Kibbe WA. Model-based variance-stabilizing transformation for Illumina microarray data. *Nucleic Acids Res*. 2008;36:1–9.
- Du P, Kibbe WA, Lin SM. Lumi: a pipeline for processing Illumina microarray. *Bioinformatics*. 2008;24:1547–8.
- Livak KJ, Schmittgen TD. Analysis of relative gene expression data using real-time quantitative PCR and the 2^{-ΔΔCT} method. *Methods*. 2001;25:402–8.