



Rural-Urban Differences in Escape Behavior of European Birds across a Latitudinal Gradient

Diogo S. M. Samia^{1*}, Daniel T. Blumstein², Mario Díaz³, Tomas Grim⁴,
Juan Diego Ibáñez-Álamo^{5,6}, Jukka Jokimäki⁷, Kunter Tätte⁸, Gábor Markó^{9,10,11},
Piotr Tryjanowski¹² and Anders Pape Møller¹³

¹ Department of Ecology, Bioscience Institute, University of São Paulo, São Paulo, Brazil, ² Department of Ecology and Evolutionary Biology, University of California, Los Angeles, Los Angeles, CA, United States, ³ Department of Biogeography and Global Change, BGC-Museo Nacional de Ciencias Naturales-CSIC, Madrid, Spain, ⁴ Department of Zoology and Laboratory of Ornithology, Palacky University, Olomouc, Czechia, ⁵ Behavioral and Physiological Ecology Group, Centre for Ecological and Evolutionary Studies, University of Groningen, Groningen, Netherlands, ⁶ Department of Wetland Ecology, Estación Biológica de Doñana, CSIC, Sevilla, Spain, ⁷ Nature Inventory and EIA-Services, Arctic Centre, University of Lapland, Rovaniemi, Finland, ⁸ Department of Zoology, Institute of Ecology and Earth Sciences, University of Tartu, Tartu, Estonia, ⁹ Ecology Research Group, Hungarian Academy of Sciences, Hungarian Natural History Museum, Eötvös Loránd University, Budapest, Hungary, ¹⁰ Behavioural Ecology Group, Department of Systematics, Zoology and Ecology, Eötvös Loránd University, Budapest, Hungary, ¹¹ Department of Plant Pathology, Szent István University, Budapest, Hungary, ¹² Institute of Zoology, Poznań University of Life Sciences, Poznań, Poland, ¹³ Ecologie Systématique Evolution, Centre National de la Recherche Scientifique, Université Paris-Sud, AgroParisTech, Université Saclay, Orsay, France

OPEN ACCESS

Edited by:

Caroline Isaksson,
Lund University, Sweden

Reviewed by:

Ximena J. Nelson,
University of Canterbury, New Zealand
Michael Reichert,
University College Cork, Ireland

*Correspondence:

Diogo S. M. Samia
diogosamia@gmail.com

Specialty section:

This article was submitted to
Behavioral and Evolutionary Ecology,
a section of the journal
Frontiers in Ecology and Evolution

Received: 17 November 2016

Accepted: 02 June 2017

Published: 26 June 2017

Citation:

Samia DSM, Blumstein DT, Díaz M,
Grim T, Ibáñez-Álamo JD, Jokimäki J,
Tätte K, Markó G, Tryjanowski P and
Møller AP (2017) Rural-Urban
Differences in Escape Behavior of
European Birds across a Latitudinal
Gradient. *Front. Ecol. Evol.* 5:66.
doi: 10.3389/fevo.2017.00066

Behavioral adjustment is a key factor that facilitates species' coexistence with humans in a rapidly urbanizing world. Because urban animals often experience reduced predation risk compared to their rural counterparts, and because escape behavior is energetically costly, we expect that urban environments will select for increased tolerance to humans. Many studies have supported this expectation by demonstrating that urban birds have reduced flight initiation distance (FID = predator-prey distance when escape by the prey begins) than rural birds. Here, we advanced this approach and, for the first time, assessed how 32 species of birds, found in 92 paired urban-rural populations, along a 3,900 km latitudinal gradient across Europe, changed their predation risk assessment and escape strategy as a function of living in urban areas. We found that urban birds took longer than rural birds to be alerted to human approaches, and urban birds tolerated closer human approach than rural birds. While both rural and urban populations took longer to become aware of an approaching human as latitude increased, this behavioral change with latitude is more intense in urban birds (for a given unit of latitude, urban birds increased their pre-detection distance more than rural birds). We also found that as mean alert distance was shorter, urban birds escaped more quickly from approaching humans, but there was no such a relationship in rural populations. Although, both rural and urban populations tended to escape more quickly as latitude increased, urban birds delayed their escape more at low latitudes when compared with rural birds. These results suggest that urban birds in Europe live under lower predation risk than their rural counterparts. Furthermore, the

patterns found in our study indicate that birds prioritize the reduction of on-going monitoring costs when predation risk is low. We conclude that splitting escape variables into constituent components may provide additional and complementary information on the underlying causes of escape. This new approach is essential for understanding, predicting, and managing wildlife in a rapidly urbanizing world.

Keywords: alert distance, antipredator behavior, buffer distance, flight initiation distance, phi index, pre-detection distance, rural-urban difference, urbanization

INTRODUCTION

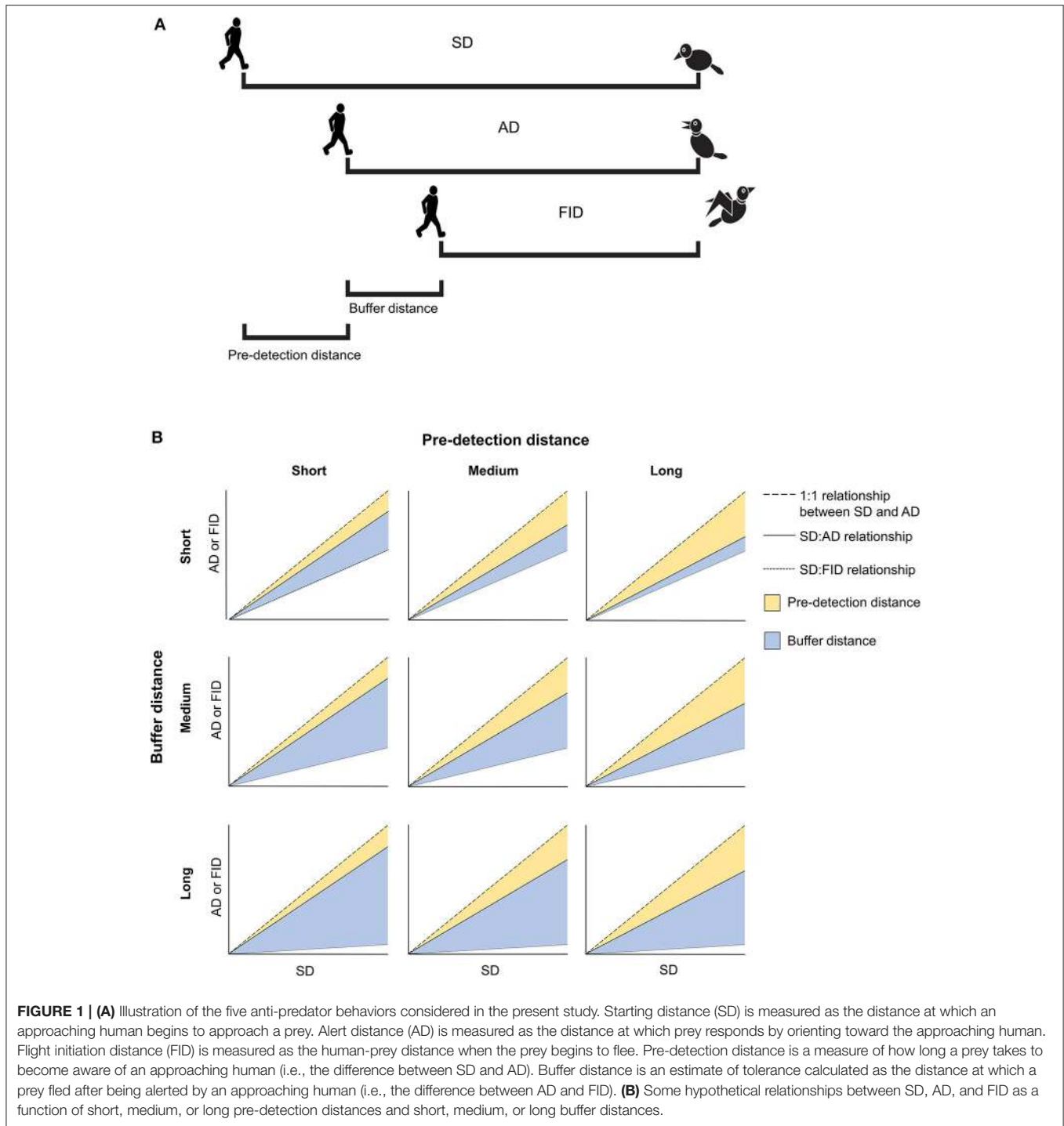
Urbanization is one of the main drivers of the current global biodiversity crisis (Foley et al., 2005; Grimm et al., 2008; McDonald, 2008). More than half of the world's humans live in cities and this proportion is expected to increase over the next decades (United Nations, 2014). In addition, the urban areas are increasing at an even greater rate than the urban population (United Nations, 2014). Given a rapidly urbanizing world, we need to better understand the traits that permit species to coexist with humans, which are often perceived as predators by animals (Frid and Dill, 2002). In this sense, behavioral plasticity is one of the key elements that permits species to coexist with humans (Sol et al., 2013). For instance, because escape from non-threatening humans is costly (Ydenberg and Dill, 1986; Cooper and Frederick, 2007; Samia et al., 2016), and because humans in cities rarely hunt or otherwise intentionally kill animals (Berger, 2007), urban prey are expected to respond to humans by reducing costly anti-predator behavior. In addition, humans in urban areas often displace predators (Møller, 2012), creating human shields where prey are relatively safe (Berger, 2007; Ibáñez-Álamo et al., 2012; Møller, 2012). If animals in urban areas experience reduced risk of predation by their native predators, this should select for reduced anti-predator responses.

In line with these expectations, a growing body of literature has shown that animals generally have relaxed anti-predator behavior in urban environments (e.g., Møller and Ibáñez-Álamo, 2012). In particular, individuals in urban populations generally tolerate more human disturbance by reducing their flight initiation distances (FID = predator-prey distance when escape of the prey begins; **Figure 1A**) compared to rural populations (Samia et al., 2015c). Despite this apparently ubiquitous pattern, the drivers of the rural-urban difference in human tolerance have just begun to be explored. Recent studies indicate an important role of a species' body size on urbanization with larger birds being more tolerant (Samia et al., 2015c) and having increased survivorship in cities (Brown and Graham, 2015). Brain size also plays a key role: successful urban invaders and exploiters are characterized by having larger brains (Sol et al., 2005, 2013; Maklakov et al., 2011) and several studies have shown a negative correlation between brain mass and FID (Møller and Erritzøe, 2014; Samia et al., 2015a; but see Carrete and Tella, 2011). Studies also suggest that big-brained species are more innovative and flexible in their ability to deal with the novel challenges imposed by urban environments, such as the chronic disturbance caused by human presence. Because predation risk is expected to decrease with group size (Hamilton, 1971; Pulliam, 1973;

Alexander, 1974), birds in larger flocks might tolerate more human disturbance than birds alone or in smaller flocks (Dill and Ydenberg, 1987; Reimers et al., 2006), although current evidence does not show a substantial effect of flock size on tolerance to humans of urban birds (Møller, 2015; Samia et al., 2015c). Some studies also suggest that increased tolerance to humans is a function of disturbance frequency (Levey et al., 2009; Engelhardt and Weladji, 2011; McGiffin et al., 2013), which suggests that either the individual habituation process (i.e., phenotypic plasticity; Blumstein, 2016), differential sorting according to individual's personalities (Carrete and Tella, 2013), or strong selection against fearful individuals (Carrete et al., 2016) may be involved in generating tolerance.

Among many recognized correlates of human tolerance, latitude has recently been identified as a potentially important correlate of tolerance in rural and urban environments. Latitude is used as a proxy for predation risk since predator density tends to decrease with increasing latitude (Laurila et al., 2008; Schemske et al., 2009). In a study of 159 species of European birds, FID decreased as latitude increased, in parallel with a clinal reduction in raptor abundance (raptors are key avian predators; Díaz et al., 2013). Other interspecific studies of FID across latitudinal gradients—or among continents—have recently revealed novel patterns in escape behavior (Møller et al., 2014, 2016; Samia et al., 2015b). However, these large scale studies have not considered a main predictor of FID, the prey's alert distance (AD; **Figure 1A**), which is the predator-prey distance when an individual prey becomes aware of and begins to monitor the predator (Cooper and Blumstein, 2015). Along with body mass, AD explains most of variation in FID in taxa studied to date (Samia et al., 2013; Cooper et al., 2015). A strong relationship between FID and AD implies that they both reflect the general level of fear that individuals experience while both scanning for predators and fleeing following a predator's approach. Variation in the strength of this relationship will however reflect different escape tactics in response to varying levels of predation risk (Cooper and Blumstein, 2014).

While a robust body of evidence has shown that FID is generally smaller in urban than rural places (review in Samia et al., 2015c), latitudinal studies of rural-urban differences in FID that account for variation in AD should permit us, for the first time, to assess how birds modify their predation risk assessment and escape strategy (in addition to modifying their FID) when living in cities. These anti-predatory decisions can be inferred from two variables. First, the prey's pre-detection distance (**Figure 1A**), which is a measure of how long a prey takes to become aware of an approaching human [i.e., the



distance between starting distance (SD) and AD; where SD is the distance to the bird when approach begins]. Second, the prey's buffer distance (**Figure 1A**), which is a more rigorous estimate of tolerance estimated as the distance at which a prey fled "after being alerted by an approaching human" (i.e., the distance between AD and FID; Cooper and Blumstein, 2015). Using this approach, we can explore whether the previously identified reduction in urban birds' FID is traded-off with an increase in

other costly anti-predatory behaviors. For instance, a shorter FID associated with a larger AD might imply increased vigilance costs since the prey's attention cannot simultaneously be focused on other fitness-enhancing activities, such as foraging. By contrast, a shorter FID associated with a shorter AD would result in a shorter buffer distance, implying that birds escape sooner after detecting an approaching human. If this reduction in tolerance is associated with a longer pre-detection distance, it may illustrate a strategy by

which birds reduce their monitoring costs. **Figure 1B** illustrates these and other hypothesized scenarios.

We studied the difference in escape decisions of urban and adjacent rural populations of 32 bird species along a large latitudinal gradient across Europe (3,900 km). We investigated whether rural and urban birds differ in their awareness and tolerance along this gradient by estimating their pre-detection distance and buffer distance. We also studied the factors potentially related to rural-urban differences in these anti-predatory indicators by exploring seven potential correlates of pre-detection distance and buffer distance: latitude, species' body mass, species' brain mass, number of humans living in the city, rural-urban difference in mean SD (hereafter, Δ SD), rural-urban difference in mean AD (hereafter, Δ AD), and rural-urban difference in mean flock size (hereafter, Δ flock size). Our hypotheses concerning the effect of these predictor variables are summarized in **Table 1**.

MATERIALS AND METHODS

Field Data Collection

We collected data from April to September 2015 (breeding season) using a standard protocol (Blumstein, 2006). Data were collected in urban and adjacent rural areas of 10 cities from eight European countries: Czech Republic, Denmark, Estonia, Finland, France, Hungary, Poland, and Spain (data set available in Supplementary Material 1). Observers used binoculars to identify birds that were foraging or engaged in "relaxed behavior" (i.e., roosting or preening). Highly vigilant or obviously alarmed individuals, or individuals near their nests were not approached. Subsequently, each individual bird was approached in a straight line by a human walking at a constant speed (0.5 m/s). The distance at which the experimenter started to approach the focal bird was recorded as SD, while the distance at which the bird first oriented toward the approaching human and stopped its previous activity was recorded as AD, and the distance at which the animal began to flee was recorded as FID. The number of birds within a radius of 10 m around the focal individual was recorded as flock size. We avoided sampling the same individual twice by moving to another site immediately after samples were taken. If the same general area was visited, only individuals of different species, sex or age than those sampled before were tested. A modest degree of re-sampling subjects, however, has been shown to not influence the results of studies like this (Runyan and Blumstein, 2004).

We used a paired study design with one urban and one rural area in each study location. The distance between each pair of urban and rural site varied between 1 and 20 km. All urban study sites included both urban centers, characterized by areas with multi-story buildings, as well as suburban areas, characterized by areas with single-family houses. Rural areas were dominated by open farmland with scattered houses. Definitions of urban (at least 50% of built-up area, building density >10 buildings/ha and, a residential human density >10 humans/ha) and rural habitats (5–20% built-up areas, a building density <2.5 buildings/ha, and residential human density between 1 and 10 humans/ha) follow Marzluff et al. (2001). The benefit of this paired study design is that neighboring study sites will share

most potentially confounding environmental characteristics (e.g., weather, altitude, soil), yet philopatry and assortative mating may decrease, or even prevent, movements between urban and rural study sites (Møller, 2009, 2015).

Additional Data

Information about latitude and human population size of the cities were extracted from Wikipedia (<https://www.wikipedia.org>). Body mass information was extracted from Cramp and Perrins (1977–1994). Brain mass information was extracted from Møller and Erritzøe (2014). As explained above, mean flock size was estimated by field observations of individual birds.

Calculating the Phi Index

The relationship between SD, AD, and FID is constrained by an envelope. This means that AD can only assume values \leq SD (according to methodology applied to study escape behavior, an individual is never experimentally approached if already alerted by an approaching observer; see Section Field Data Collection) and FID can only assume values \leq AD (a prey individual cannot escape from a predator before it has detected it). The phi index (Φ) is a goodness-of-fit metric that was originally developed to provide estimates, unbiased by this envelope relationship, of how close FID is to AD, which corresponds to our definition of buffer distance (Samia and Blumstein, 2014). Formally,

$$\Phi = 1 - \frac{\sum_{i=0}^n \frac{(e_i - o_i)}{e_i}}{n}$$

where, e_i is the AD, o_i is the FID, and n is the sample size. Nevertheless, Φ can also be used to estimate how close AD (in this case, o_i) is to SD (e_i) and then estimate the pre-detection distance. Importantly, Φ can be used as an effect size measure, which provides the magnitude of the effect of SD on AD (hereafter, pre-detection- Φ) and of AD on FID (hereafter, buffer- Φ ; Samia and Blumstein, 2014). Φ is a standardized metric ranging from 0 to 1. Pre-detection- Φ values closer to 1 imply that birds were aware of approaching humans as soon as the human started to approach the focal bird, while buffer- Φ values closer to 1 imply that birds escape as soon as they were alerted to an approaching human.

Statistical Methods

We fitted a phylogenetically informed mixed-effect model using the *rma.mv* function of the *metafor* R package (Viechtbauer, 2010). Because there were multiple observations for each species, and because a shared evolutionary history makes data statistically dependent (Garamszegi, 2014), we incorporated species identity as a random factor while controlling for the phylogenetic dependence among species using a recent phylogenetic hypothesis (Jetz et al., 2012; Supplementary Figure 1).

Our dependent variables were the rural-urban difference in Φ estimated for a species from a single city (e.g., Φ of the rural population of *Passer domesticus* from around Madrid minus the Φ of the urban population of *P. domesticus* from the city of Madrid); hereafter termed Δ pre-detection- Φ and Δ buffer- Φ . The use of these dependent variables emphasizes our aim of studying rural-urban differences in these antipredator behaviors.

TABLE 1 | Hypotheses concerning predictors.

Predictor	Response variable	Rationale	Expectation
Δ SD	Pre-detection distance	Predation risk decreases as soon as prey detect an approaching predator.	Rural-urban difference should increase with Δ AD: we expect that urban birds show a weaker positive relationship between buffer distance and AD because of a reduced perceived risk of predation in urban environments.
Δ AD	Buffer distance	FID often show a strong positive relationship with AD, very likely because of increased attentional costs of monitoring an approaching predator, or because perceived risk increases as the duration of a predator's approach increases.	Rural-urban difference should increase with Δ AD: we expect that urban birds show a weaker positive relationship between buffer distance and AD because of a reduced perceived risk of predation in urban environments.
Δ flock size	Pre-detection distance	Vigilance increases with group size because of many eyes effect.	Rural-urban difference should increase with Δ flock size: we expect that urban birds live in smaller flocks because of reduced predation risk in the cities and then take longer to be alerted about an approaching human.
	Buffer distance	<i>Per capita</i> predation risk tends to decrease with group size because individual risk is diluted.	Rural-urban difference should increase with Δ flock size: we expect that urban birds live in smaller flocks because of reduced predation risk in the cities and also tolerate closer human approaches after detection because of the reduction in perceived predation risk.
Latitude	Pre-detection distance	Predation risk decreases with latitude because of reduced predator density.	Rural-urban difference should decrease as latitude increases since the difference in predation pressure between rural and urban environments is smaller at high latitudes.
	Buffer distance	Predation risk decreases with latitude because of reduced predator density.	Rural-urban difference should decrease as latitude increases since the difference in predation pressure between rural and urban environments is smaller at high latitudes.
Body mass	Pre-detection distance	FID and AD usually increase with body mass for a variety of hypothetical causes: increased conspicuousness of large prey, decreased agility to escape larger animals, preferred prey item because of increased energetic intake to the predator, increased risk taking by smaller animals because their metabolic rates make acquiring sufficient energy more immediate.	Rural-urban difference should increase as body mass increases.
	Buffer distance	FID and AD usually increase with body mass for a variety of hypothetical reasons: increased conspicuousness of large prey, larger animal's decreased agility to escape, large prey are preferred prey items, increased risk taking by smaller animals because their energetic requirements are more immediate given relatively high metabolic rates.	Rural-urban difference should increase as body mass increases.
Brain mass	Pre-detection distance	Large-brained species are better able to adapt to novel environments (e.g., cities), assess predation risk and increase net benefits before fleeing from an approaching threat.	Rural-urban difference should increase as brain mass increases.
	Buffer distance	Large-brained species are better able to adapt to novel environments (e.g., cities), assess predation risk and increase net benefits before fleeing from an approaching threat.	Rural-urban difference should increase as brain mass increases.
Human population size	Pre-detection distance	For animals that showed increased tolerance to humans, evidence suggests that the degree of tolerance increases with frequency of non-lethal human disturbances, likely because of a habituation process.	Rural-urban difference should increase with a city's human population size.
	Buffer distance	For animals that showed increased tolerance to humans, evidence suggests that the degree of tolerance increases with frequency of non-lethal human disturbances, likely because of a habituation process.	Rural-urban difference should increase with a city's human population size.

SD, starting distance; AD, alert distance; FID, flight initiation distance; Δ , symbol indicates the rural-urban difference of a given variable.

We only included populations with at least eight observations per urban site and at least eight observations per rural site (i.e., at least 16 observations per species' population) in the analyses to avoid estimates based on very small sample sizes.

We tested the effect of the predictors on Δ pre-detection- Φ and Δ buffer- Φ using models that were weighted by sample size to account for differences in sampling effort among populations (Garamszegi and Møller, 2011; Garamszegi, 2014). The inverse sample size of a given species' population (= contrast) was used as a proxy for variance in the *rma.mv* function (Garamszegi, 2014). Continuous variables were log₁₀-transformed before analyses to ensure normality of residuals.

We performed stepwise backward model selection based on corrected Akaike Information Criteria (AIC_c), using a threshold AIC_c value of 2. We present both full and minimum adequate models. We assessed the importance of each predictor based on their effect sizes calculated as partial correlation coefficients (Nakagawa and Cuthill, 2007). We followed criteria listed by Cohen (1997) for small ($r = 0.10$, explaining 1% of the variance), intermediate ($r = 0.3$, explaining 9% of the variance) or large effect sizes ($r = 0.5$, explaining 25% of the variance). As expected, brain mass was strongly positively correlated with body mass ($r = 0.9$), but the remaining predictor variables had low multicollinearity (all variance inflation factors, VIFs, <1.21). Multiple regression is the best approach to control for undesirable confounding effects among correlated covariates (such as body and brain masses), yielding unbiased coefficient estimates (Freckleton, 2002). For this reason, we retained body mass and brain mass in the same model to control for their confounded effect. Moreover, we found no relationship between body mass and latitude (model's $P = 0.36$; effect size $r = -0.07$), or body mass and an interaction between latitude and site (rural \times urban; model's $P = 0.94$; effect size $r = -0.005$), suggesting that any effect of latitude on the escape variables was not confounded by a potential latitudinal increase in avian body mass. All analyses were conducted with R version 3.2.2 (R Core Team, 2014).

RESULTS

Our final data set contained 5,987 observations of 32 bird species, resulting in 92 paired comparisons of rural and urban populations (Supplementary Material 1). Paired *t*-tests showed that, on average, SD, AD, FID, and buffer- Φ were smaller in urban than in matched rural populations, all with large effect sizes (Figure 2). Although the SD used to approach urban birds was much smaller than the SD for rural birds (with a large effect size, $r = 0.64$), urban birds took longer than rural birds to be alerted to an approaching human, as evidenced by a smaller pre-detection- Φ in urban populations (the rural-urban difference had a large effect size; Figure 2). Flock size did not differ between rural and urban populations (with a very small effect size; Figure 3), suggesting that urban birds did not take longer to detect humans because of fewer eyes to detect predators.

The minimum adequate model of Δ pre-detection- Φ retained only one variable, latitude, which had a large effect size (Table 2). We found that the rural-urban difference in pre-detection distance increased with latitude (Table 2,

Figure 4A). Specifically, we found that although both rural and urban populations tended to take longer to be alerted to an approaching human as latitude increased (i.e., both have smaller pre-detection- Φ values as latitude increased), urban birds took even longer than rural birds as latitude increased (Figures 4A,B).

The minimum adequate model of Δ buffer- Φ retained two variables: Δ AD (intermediate to large effect size) and latitude (small to intermediate effect size; Table 3). We found that the rural-urban differences in buffer distance increased with the difference in their mean AD (Table 3, Figure 5A). When we excluded an outlier with high leverage from analysis, we found that rural birds did not have a significant relationship between mean AD and buffer- Φ (Figure 5B), while urban birds had a negative relationship between these variables ($P = 0.019$; Figure 5C). The latter relationship was marginally significant when the outlier was kept in the analysis ($P = 0.053$; Supplementary Figure 2). We also found that rural-urban differences in buffer distance decreased as latitude increased (Table 3, Figure 6A). Although both rural and urban populations tended to escape sooner once alerted, as latitude increased (i.e., both have larger Φ -values as latitude increased), urban birds tended to delay their escape more at low latitudes when compared with rural birds (Figure 6B).

Finally, regression between buffer- Φ and pre-detection- Φ by site revealed an interesting pattern (Figure 7). In rural environments, populations that were alerted soon after a human began approaching them responded by delaying or anticipating flight, whereas all but one population that took longer to become alerted to humans escaped soon afterwards (Figure 7A). By contrast, in urban environments, the significant negative relationship between buffer- Φ and pre-detection- Φ (small to intermediate effect size, $r = -0.26$; intercept = 0.783, $b = -0.203$, $P = 0.012$) suggests a trade-off between these escape decisions (Figure 7B).

DISCUSSION

When compared with rural birds, urban European birds have shorter alert distances (AD), flight initiation distances (FID), and delay escape more (as reflected by smaller buffer- Φ values). Despite the fact that the starting distance (SD) used to approach individual birds was much smaller in urban sites, urban birds took longer to be alerted by an approaching human (as reflected by a smaller pre-detection- Φ values), making our conclusions even more robust. Despite the fact that the observer is partly determining SD, it is also a feature of habitats and species associated with specific habitats. In urban habitats, birds may observe an approaching human or predator later because of high building density or because of urban noise, and therefore urban birds may have less time to make their escape decisions. Importantly, since AD and FID were also substantially reduced in urban habitats (both with large effect sizes), the large reduction in pre-detection distance and buffer distances in urban locations were not an artifact caused by Φ , a metric which calculates the relative, not the absolute, difference between these behavioral estimates (Samia and Blumstein, 2014).

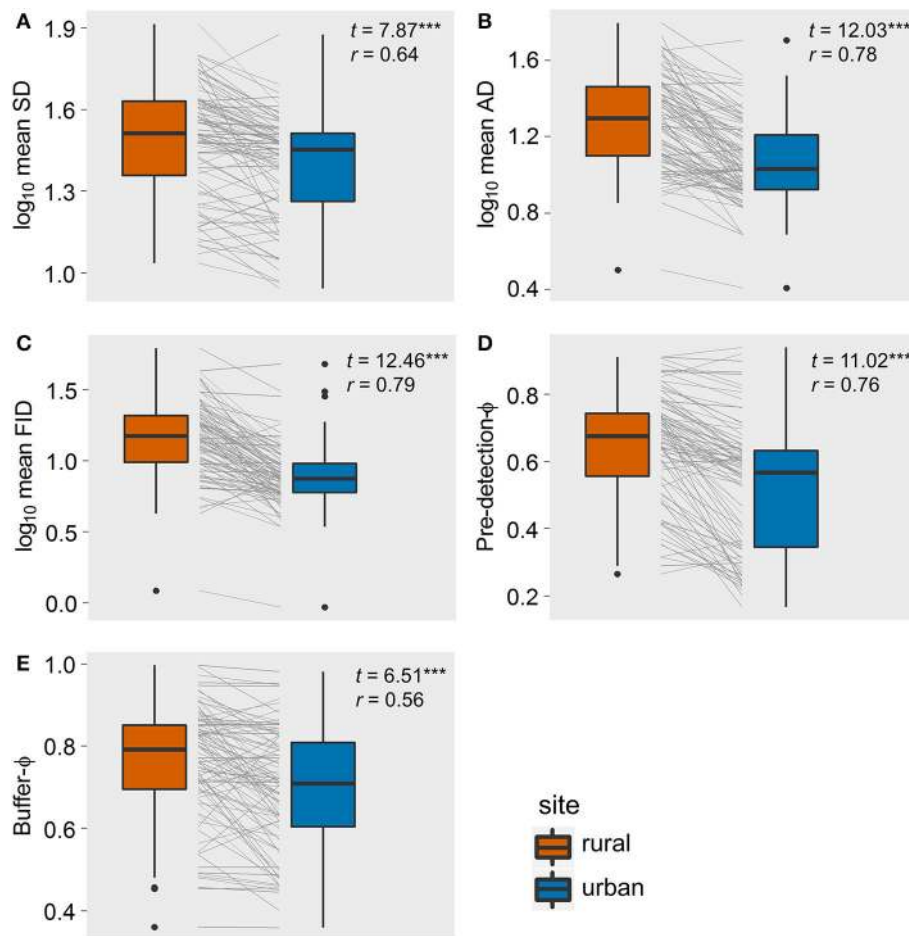


FIGURE 2 | The rural-urban differences of five components of escape behavior of the 92 bird populations studied in Europe: **(A)** starting distance, SD; **(B)** alert distance, AD, **(C)** flight initiation distance, FID; **(D)** pre-detection- ϕ (lower values mean that birds took longer to be alerted to an approaching human); **(E)** buffer- ϕ (lower values mean that birds tolerate more human approach after detection). Box-plots show median, quartiles, 5- and 95-percentiles and extreme values. Each population's trajectory is illustrated with a gray line. t -values and effect sizes calculated as partial correlation coefficients are shown. All t -values were highly significant ($***P < 0.001$).

The great reduction in anti-predatory responses in urban environments suggests that urban birds in Europe live under lower predation risk than their rural counterparts, a causal hypothesis supported by previous studies (e.g., Anderies et al., 2007; Møller and Ibáñez-Álamo, 2012; Díaz et al., 2013). Economic escape theory postulates that prey should counterbalance predation risk and the costs of fleeing (which includes the loss of foraging opportunities) when deciding to escape from a potential predator (Ydenberg and Dill, 1986; Cooper and Frederick, 2007). By reducing awareness and delaying flight after detecting a potential threat, urban birds are expected to be able to allocate more of their limited energy to other key activities, such as foraging and reproduction (Ydenberg and Dill, 1986; Cooper and Frederick, 2007). Indeed, urban birds often have longer reproductive periods and more breeding bouts when compared with their rural counterparts, although climatic and ecological factors are also involved in this process (Deviche and Davies, 2013; Møller et al., 2015).

Besides the difference in predation risk, there are at least two other possible drivers of these rural-urban differences in anti-predatory responses. First, it is possible that urban birds live in “heat islands” and this climatic effect, rather than variation in predation risk, drives the patterns in the life history decisions reported here. We find this possible, but not likely because of the effect sizes we identified and because of the relationship between predation and FID that we (and others) reported elsewhere (Stankowich and Blumstein, 2005; Díaz et al., 2013; Cooper and Blumstein, 2015; Samia et al., 2015c). Second, variation in flock size, which could influence risk perception, could also explain these patterns. Differences in flock size between rural and urban populations could contribute to differential awareness and risk taking by birds that results from the effects of many eyes scanning for predators (Pulliam, 1973). Individuals in larger flocks could also tolerate more human disturbance because of a reduction in *per capita* risk of predation (Alexander, 1974). And, if tolerance of non-lethal human disturbance is socially

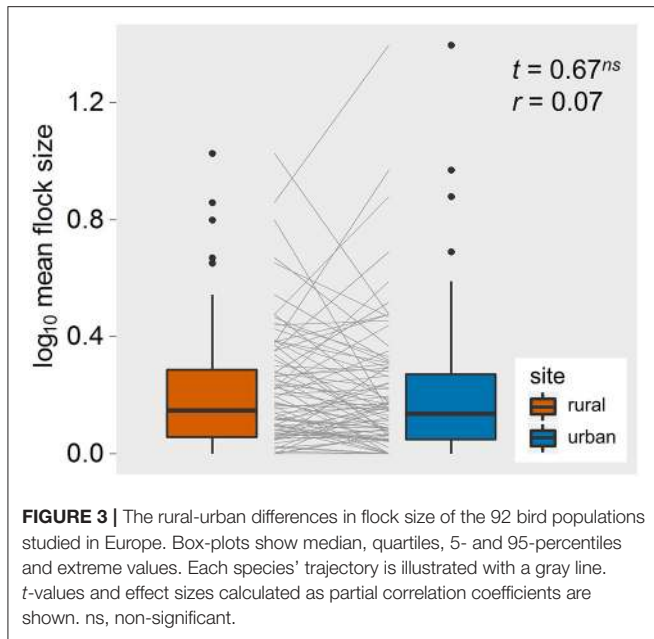


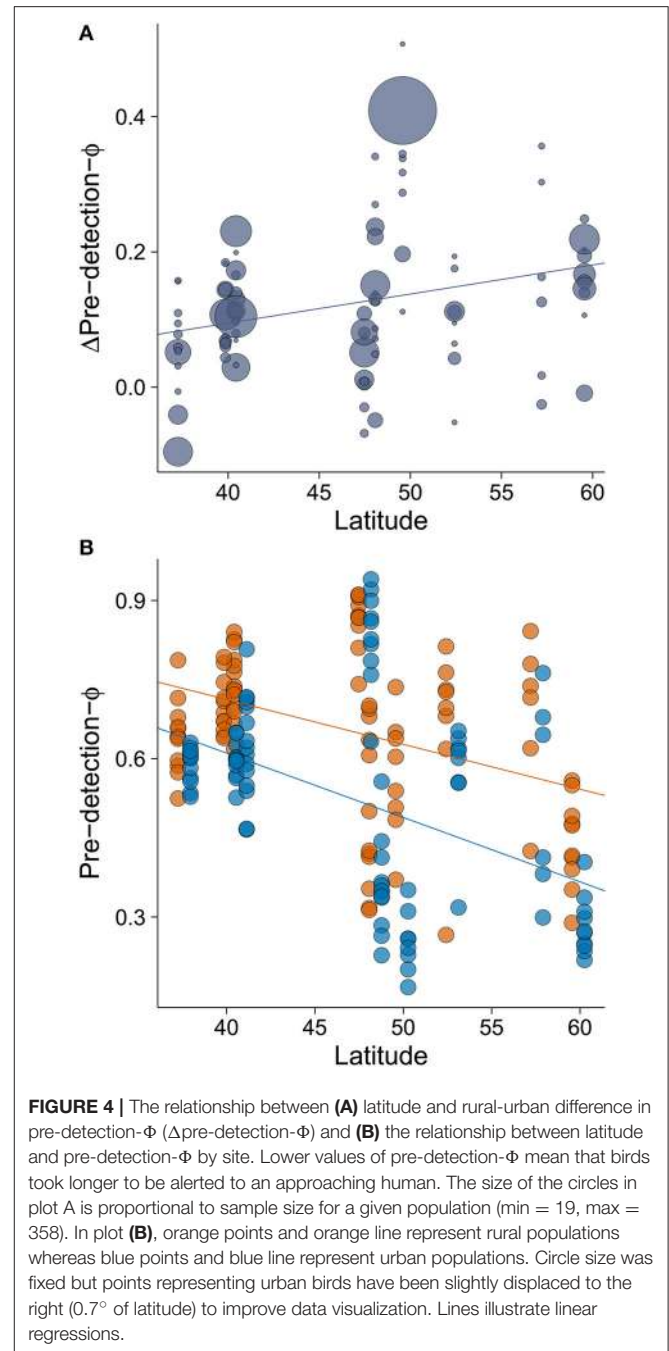
TABLE 2 | Full and minimum adequate models explaining the rural-urban differences in pre-detection distance (Δ pre-detection- Φ) of European birds.

Predictor	Estimate	SE	Z	p	Effect size
FULL MODEL (AIC_c = -93.84)					
(Intercept)	-0.137	0.206	-0.662	0.508	
Δ SD	0.142	0.145	0.980	0.327	0.11
Latitude	0.004	0.002	2.106	0.035	0.23
Body mass	0.076	0.076	0.998	0.318	0.11
Brain mass	-0.108	0.121	-0.893	0.372	-0.10
Human population	-0.013	0.019	-0.693	0.489	-0.08
Δ Flock size	0.010	0.090	0.108	0.914	0.01
MINIMUM MODEL (AIC_c = -113.32)					
(Intercept)	-0.078	0.094	-0.821	0.412	
Latitude	0.004	0.002	2.162	0.031	0.23

Effect sizes are partial correlation coefficients. P -values in bold indicate statistical significance ($P < 0.05$).

transmitted, one might expect the effect of social transmission to be enhanced in larger groups (Griffin, 2004). However, the rural and urban bird populations we studied in Europe did not differ in their flock sizes. Although, a recent study found that wild birds increased tolerance to humans as group size increased (Samia et al., 2015a), flock size was not important in explaining rural-urban differences in tolerance in a meta-analysis of 180 bird species distributed around the globe (Samia et al., 2015c), nor was it important in a meta-analysis of all estimates of FID in birds (Møller, 2015). Nevertheless, the similarly-sized flocks in rural and urban bird populations in our study suggests alternative explanations for rural-urban differences in these anti-predatory responses.

To understand the changes in escape strategies of rural and urban birds we need an integrative view of the patterns that



arise from the main drivers of pre-detection distance and buffer distance. As latitude increases, pre-detection distances increase and buffer distances decrease in both rural and urban birds. If we assume that predation risk decreases with increasing latitude (Schemske et al., 2009; Diaz et al., 2013), this implies that as risk decreases, birds take longer to become aware of approaching humans while they take flight more rapidly following detection. This pattern suggests that birds prioritize the reduction of monitoring costs when facing lower predation pressure, which occurs at higher latitudes and in urban areas.

TABLE 3 | Full and minimum adequate models explaining the rural-urban differences in buffer distance ($\Delta\text{buffer-}\Phi$) of European birds.

Predictor	Estimate	SE	Z	p	Effect size
FULL MODEL (AIC_c = -110.72)					
(Intercept)	0.222	0.184	1.209	0.227	
ΔAD	0.317	0.080	3.966	<0.001	0.43
Latitude	-0.005	0.002	-2.490	0.013	-0.27
Body mass	-0.0004	0.07	-0.006	0.996	<0.01
Brain mass	0.072	0.107	0.675	0.499	0.07
Human population	0.0003	0.017	0.018	0.986	<0.01
$\Delta\text{Flock size}$	0.028	0.082	0.343	0.731	0.04
MINIMUM MODEL (AIC_c = -126.69)					
(Intercept)	0.222	0.085	2.603	0.009	
ΔAD	0.332	0.078	4.246	<0.001	0.45
Latitude	-0.005	0.002	-2.407	0.016	-0.26

Effect sizes are partial correlation coefficients. P-values in bold indicate statistical significance ($P < 0.05$).

Because attention is a limited entity (Dukas, 1998, 2004), prey that allocate attention so that they can detect predators must reduce or divert their attention from other fitness-enhancing activities, such as foraging or social activities. For this reason, ongoing monitoring is costly because of lost opportunities. In fact, a recent meta-analysis showed that factors associated with opportunity costs had the largest effect size on escape decisions in lizards (Samia et al., 2016). This raises the question whether it is reasonable to expect selection on animals to reduce monitoring costs in areas with reduced predation risk. Future studies that report a negative relationship between latitude (or other environmental correlates of predation risk) and vigilance behavior in birds would be consistent with the causal hypothesis of reduction of attentional costs.

While larger pre-detection distances at higher latitudes is consistent with the reduced predation risk hypothesis, the more immediate escape of both rural and urban birds at higher latitudes might sound counterintuitive. However, this observation can be explained by the spatial constraints associated with escape. Escape variables are constrained so that $\text{SD} \geq \text{AD} \geq \text{FID}$, with FID always being > 0 for prey which flee an approaching threat at any given moment (Cooper et al., 2015). The larger a prey's pre-detection distance, the closer is AD to the minimal safe distance (Blumstein, 2003; Cooper and Blumstein, 2015). In economic escape theory, the minimal safe distance (or Zone I sensu Blumstein, 2003) represents a distance at which prey flee immediately because the risk of being depredated is maximal given its very close distance to the predator. Thus, it is not expected that prey tradeoff risks against costs, but rather flee immediately (Blumstein, 2003; Cooper and Blumstein, 2015). Therefore, because birds seemingly increase their pre-detection distance to avoid ongoing monitoring costs at high latitudes, their AD shifts closer to their minimal safe distance, resulting in even more immediate escape at higher latitudes. Although the existence of a minimal safe distance has empirical support (e.g., Cooper, 2005, 2008), future studies identifying the factors that determine it, and whether the minimal

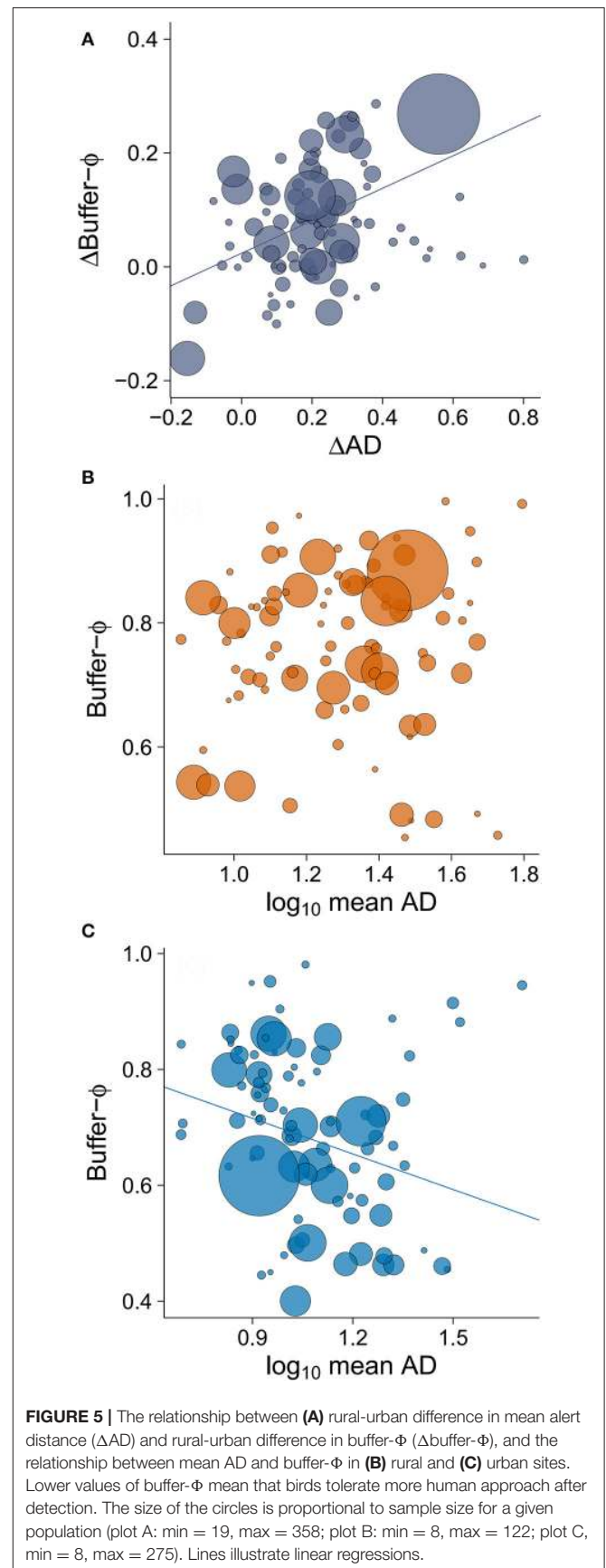
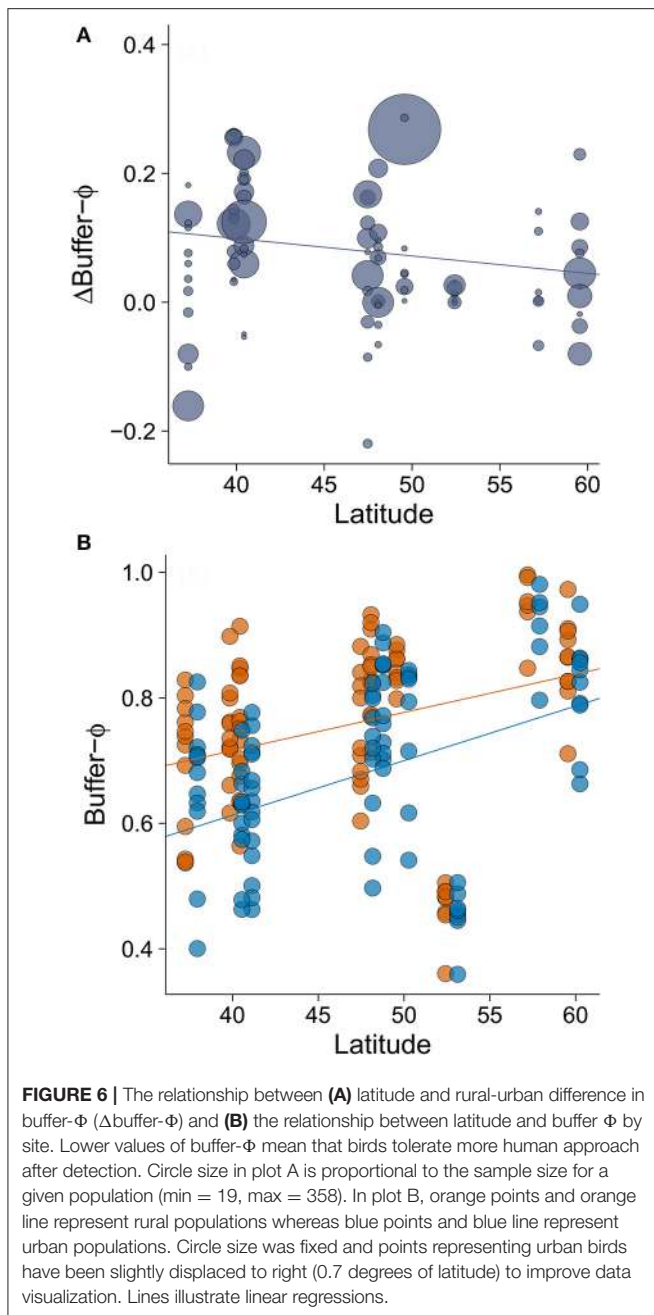
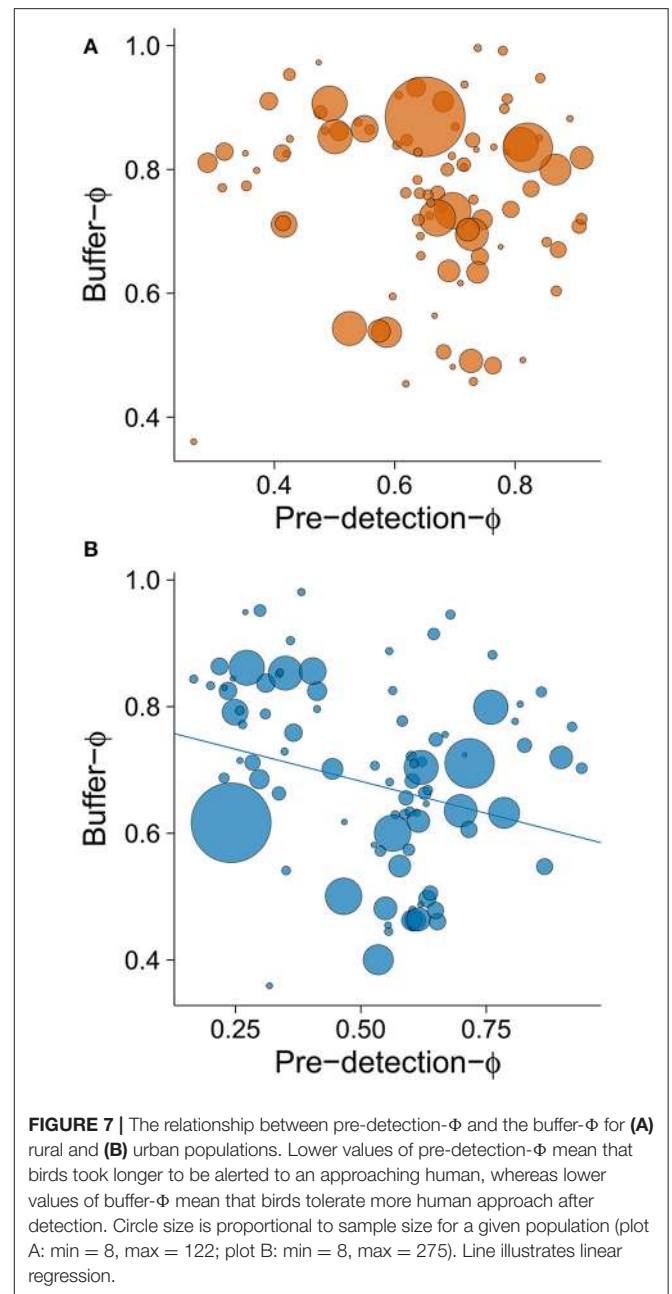


FIGURE 5 | The relationship between (A) rural-urban difference in mean alert distance (ΔAD) and rural-urban difference in buffer- Φ ($\Delta\text{buffer-}\Phi$), and the relationship between mean AD and buffer- Φ in (B) rural and (C) urban sites. Lower values of buffer- Φ mean that birds tolerate more human approach after detection. The size of the circles is proportional to sample size for a given population (plot A: min = 19, max = 358; plot B: min = 8, max = 122; plot C, min = 8, max = 275). Lines illustrate linear regressions.



safe distance changes over time and context, will help us to understand the processes leading to the success of urban populations.

This causal hypothesis of the relationship between buffer distance and latitude is supported by two other findings. First, the observation of different relationships between AD and buffer distance that varied across sites. In rural areas, with larger average AD, which were further from bird's minimal safe distances, there was no relationship between mean AD and buffer distance. By contrast, this relationship was negative in urban areas where mean AD was shorter and thus closer to the bird's minimal safe distances. Second, the observation of the inverse relationship



of pre-detection distance and buffer distance that varied with latitude. This relationship suggests that the minimal safe distance is a potential threshold for escape in birds. The rural-urban difference in buffer distance is larger in Southern Europe, the region where the difference in pre-detection distance is smaller. Conversely, the rural-urban difference in buffer distance is smaller in Northern Europe, where the difference in pre-detection distance is larger.

Although the observed latitudinal variation in behavior is consistent with the predation risk hypothesis (when not distinguishing rural from urban populations), the observed "rural-urban difference" in these behaviors with latitude is

challenging to explain, particularly since some expected patterns were not observed (see **Table 1**).

Contrary to our expectation, rural-urban differences in pre-detection distance increased at higher latitudes, with urban birds taking even longer to be alerted of approaching humans in higher latitudes. There are at least two hypotheses that may explain these patterns. First, in Northern Europe, rural villages are small and birds may effectively avoid people because they have a reduced tolerance of people (e.g., because they are less exposed, they are less likely to habituate to humans) and because of a weaker human shield effect in these areas (Berger, 2007; Ibáñez-Álamo et al., 2012; Møller, 2012). Thus, the difference between urban centers and rural areas may be exacerbated given the size of rural villages. Second, the differences between Northern and Southern Europe could result by their different types of predator communities. Predator assemblages in Northern towns are less diverse and abundant than assemblages in the Southern towns. For example, no stray cats and red foxes live in Northern European towns (e.g., Jokimäki et al., 2005), despite both of them being common in Southern European towns. In addition, many raptor species (e.g., *Falco peregrinus* and *F. tinnunculus*) are urbanized in the South but have not become urbanized in the North. These differences are partly related to much longer history of urbanization in Southern than in Northern Europe. Thus, urban birds in the North may live in even safer environments and this could enhance the pre-detection differences between rural and urban areas. However, it is also possible that both human presence/disturbance (Carrete and Tella, 2010) as well as differences in the predator assemblages might cause differences in avian anti-predatory behavior.

Brain size was not a main driver of rural-urban differences in escape decisions in this set of European birds. Brain size was a main driver of escape decisions of North American and Australian birds when interspecific differences were investigated (Samia et al., 2015a). At the species level, differences in brain size are often associated with variation in cognitive abilities and/or behavioral flexibility (Sol et al., 2005, 2013; Maklakov et al., 2011). However, as we found, a species' brain size may not have a substantial effect on the rural-urban changes in avian escape decisions within species. Despite that, the effect of brain size on rural-urban difference in escape decisions of European birds might differ from that in North American and Australian birds due to a longer history of close interactions between birds and humans in the Old World, dating back more than 30,000 years. For example, Møller et al. (2014) showed that the relationship between FID and population trends differed between Europe and Australia on one hand and North America on the other. Whether this difference is based on cognitive, and hence brain size, differences among continents still remains to be determined. Future studies that explicitly analyze the relationship between rural-urban differences in escape decisions and brain size on continents that vary in their history of exposure to human activity are warranted. Such differences in behavior may have consequences for life history, which are already known to differ between the Old and the New World with reduced nest predation and increased fecundity and iteroparity in the Old World (Martin and Clobert, 1996; Ghalambor and Martin,

2001). The present study indicates that effects of urbanization, acting through selection on life history decisions, may be more profound than previously realized.

We conclude by noting that, while the study of FID has played a crucial role in the development of risk assessment theory and has been widely used to study the effects of urbanization, we have shown that other components of escape behavior can respond differently (both to urbanization and latitude) and provide a complementary perspective to the study of antipredator responses. This new approach is essential if we are to understand, predict and manage wildlife in a rapidly urbanizing world.

ETHICS STATEMENT

Data were collected on public and private land after acquiring any required permits. By design, experimental approaches were designed to create only a brief disturbance and we are not aware of any lasting harm caused by the experimental approaches. In addition, and to reduce the likelihood of any negative effects, endangered species were not targeted, and we only targeted birds away from their nests. In fact, the disturbance produced to birds by our methodology did not differ from standard “background” disturbance caused by any persons walking outdoors.

AUTHORS CONTRIBUTIONS

Conceived the study: DS and AM. Collected data: All authors, except DS and DTB. Analyzed data: DS. Discussed the results: All authors. Wrote the first draft of the manuscript: DS, DTB, and AM. All authors edited the manuscript.

FUNDING

DS was supported by Fundação de Amparo à Pesquisa do Estado de São Paulo (FAPESP 2015/06734-1). DTB was supported by NSF. TG was supported by the Human Frontier Science Program award (RGY83/2012). JI was funded by a postdoctoral contract (TAHUB-104) from the program “Andalucía Talent Hub” (co-funded by the European's Union Seventh Framework Program Marie Skłodowska-Curie actions—COFUND—and the regional Government of Andalucía). KT was supported by the Estonian Research Council (institutional research funding IUT number 34-8). GM was supported by National Research, Development, and Innovation Office (NKFIH, K-115970).

ACKNOWLEDGMENTS

We thank Tomás Pérez-Contreras for his help during the field work and R. Viitanen for designing the **Figure 1A**.

SUPPLEMENTARY MATERIAL

The Supplementary Material for this article can be found online at: <http://journal.frontiersin.org/article/10.3389/fevo.2017.00066/full#supplementary-material>

REFERENCES

- Alexander, R. D. (1974). The evolution of social behavior. *Annu. Rev. Ecol. Syst.* 5, 325–383. doi: 10.1146/annurev.es.05.110174.001545
- Anderies, J. M., Katti, M., and Shochat, E. (2007). Living in the city: resource availability, predation, and bird population dynamics in urban areas. *J. Theor. Biol.* 247, 36–49. doi: 10.1016/j.jtbi.2007.01.030
- Berger, J. (2007). Fear, human shields and the redistribution of prey and predators in protected areas. *Biol. Lett.* 3, 620–623. doi: 10.1098/rsbl.2007.0415
- Blumstein, D. T. (2003). Flight initiation distance in birds is dependent on intruder starting distance. *J. Wildl. Manage.* 67, 852–857. doi: 10.2307/3802692
- Blumstein, D. T. (2006). Developing an evolutionary ecology of fear: how life history and natural history traits affect disturbance tolerance in birds. *Anim. Behav.* 71, 389–399. doi: 10.1016/j.anbehav.2005.05.010
- Blumstein, D. T. (2016). Habituation and sensitization: new thoughts about old ideas. *Anim. Behav.* 120, 255–262. doi: 10.1016/j.anbehav.2016.05.012
- Brown, L. M., and Graham, C. H. (2015). Demography, traits and vulnerability to urbanization: can we make generalizations? *J. Appl. Ecol.* 52, 1455–1464. doi: 10.1111/1365-2664.12521
- Carrete, M., and Tella, J. L. (2010). Individual consistency in flight initiation distances in burrowing owls: a new hypothesis on disturbance-induced habitat selection. *Biol. Lett.* 6, 167–170. doi: 10.1098/rsbl.2009.0739
- Carrete, M., and Tella, J. L. (2011). Inter-individual variability in fear of humans and relative brain size of the species are related to contemporary urban invasion in birds. *PLoS ONE* 6:e18859. doi: 10.1371/journal.pone.0018859
- Carrete, M., and Tella, J. L. (2013). High individual consistency in fear of humans throughout the adult lifespan of rural and urban burrowing owls. *Sci. Rep.* 3:3524. doi: 10.1038/srep03524
- Carrete, M., Martínez-Padilla, J., Rodríguez-Martínez, S., Reboló-Ifrán, N., Palma, A., and Tella, J. L. (2016). Heritability of fear of humans in urban and rural populations of a bird species. *Sci. Rep.* 6, 1–6. doi: 10.1038/srep31060
- Cohen, J. (1997). *Statistical Power Analysis for the Behavioral Sciences*. New York, NY: Academic Press.
- Cooper, W. E. Jr., and Blumstein, D. T. (2014). Novel effects of monitoring predators on costs of fleeing and not fleeing explain flushing early in economic escape theory. *Behav. Ecol.* 25, 44–52. doi: 10.1093/beheco/art083
- Cooper, W. E. Jr., and Blumstein, D. T. (eds.). (2015). *Escaping from Predators: An Integrative View of Escape Decisions*. New York, NY: Cambridge University Press. doi: 10.1017/CBO9781107447189
- Cooper, W. E. Jr., and Frederick, W. G. (2007). Optimal flight initiation distance. *J. Theor. Biol.* 244, 59–67. doi: 10.1016/j.jtbi.2006.07.011
- Cooper, W. E. Jr., Samia, D. S. M., and Blumstein, D. T. (2015). FEAR, spontaneity, and artifact in economic escape theory: a review and prospectus. *Adv. Stud. Behav.* 47, 147–159. doi: 10.1016/bs.asb.2015.02.002
- Cooper, W. E. Jr. (2005). When and how do predator starting distances affect flight initiation distances? *Can. J. Zool.* 83, 1045–1050. doi: 10.1139/z05-104
- Cooper, W. E., Jr. (2008). Strong artifactual effect of starting distance on flight initiation distance in the actively foraging lizard *Aspidoscelis exsanguis*. *Herpetologica* 64, 200–206. doi: 10.1655/07-081.1
- Cramp, S., and Perrins, C. M. (1977–1994). *The Birds of the Western Palearctic*. Oxford: Oxford University press.
- Deviche, P., and Davies, S. (2013). “Reproductive phenology of urban birds: environmental cues and mechanisms,” in *Avian Urban Ecology: Behavioural and Physiological Adaptations*, eds D. Gil and H. Brumm (Oxford: Oxford University Press), 98–115. doi: 10.1093/acprof:osobl/9780199661572.003.0008
- Díaz, M., Møller, A. P., Flensted-Jensen, E., Grim, T., Ibáñez-Álamo, J. D., Jokimäki, J., et al. (2013). The geography of fear: a latitudinal gradient in anti-predator escape distances of birds across Europe. *PLoS ONE* 8:e64634. doi: 10.1371/journal.pone.0064634
- Dill, L. M., and Ydenberg, R. C. (1987). The group size - flight distance relationship in water striders (*Gerris remigis*). *Can. J. Zool.* 65, 223–226. doi: 10.1139/z87-036
- Dukas, R. (1998). *Cognitive Ecology: The Evolutionary Ecology of Information Processing and Decision Making*. Chicago, IL: University of Chicago Press.
- Dukas, R. (2004). Causes and consequences of limited attention. *Brain Behav. Evol.* 63, 197–210. doi: 10.1159/000076781
- Engelhardt, S. C., and Weladji, R. B. (2011). Effects of levels of human exposure on flight initiation distance and distance to refuge in foraging eastern gray squirrels (*Sciurus carolinensis*). *Can. J. Zool.* 89, 823–830. doi: 10.1139/z11-054
- Foley, J. A., DeFries, R., Asner, G. P., Barford, C., Bonan, G., Carpenter, S. R., et al. (2005). Global consequences of land use. *Science* 309, 570–574. doi: 10.1126/science.1111772
- Freckleton, R. P. (2002). On the misuse of residuals in ecology: regression of residuals vs. multiple regression. *J. Anim. Ecol.* 71, 542–545. doi: 10.1046/j.1365-2656.2002.00618.x
- Frid, A., and Dill, L. (2002). Human-caused disturbance stimuli as a form of predation risk. *Conserv. Ecol.* 6, 1–11. doi: 10.5751/es-00404-060111
- Garamszegi, L. Z. (eds.). (2014). *Modern Phylogenetic Comparative Methods and Their Application in Evolutionary Biology: Concepts and Practice*. New York, NY: Springer. doi: 10.1007/978-3-662-43550-2
- Garamszegi, L. Z., and Møller, A. P. (2011). Nonrandom variation in within-species sample size and missing data in phylogenetic comparative studies. *Syst. Biol.* 60, 876–880. doi: 10.1093/sysbio/syr060
- Ghalambor, C. K., and Martin, T. E. (2001). Fecundity-survival trade-offs and parental risk-taking in birds. *Science* 292, 494–497. doi: 10.1126/science.1059379
- Griffin, A. S. (2004). Social learning about predators: a review and prospectus. *Learn. Behav.* 32, 131–140. doi: 10.3758/BF03196014
- Grimm, N. B., Foster, D., Groffman, P., Grove, J. M., Hopkinson, C. S., Nadelhoffer, K. J., et al. (2008). The changing landscape: ecosystem responses to urbanization and pollution across climatic and societal gradients. *Front. Ecol. Environ.* 6, 264–272. doi: 10.1890/070147
- Hamilton, W. D. (1971). Geometry for the selfish herd. *J. Theor. Biol.* 31, 295–311. doi: 10.1016/0022-5193(71)90189-5
- Ibáñez-Álamo, J. D., Sanllorente, O., and Soler, M. (2012). The impact of researcher disturbance on nest predation rates: a meta-analysis. *Ibis* 154, 5–14. doi: 10.1111/j.1474-919X.2011.01186.x
- Jetz, W., Thomas, G. H., Joy, J. B., Hartmann, K., and Mooers, A. O. (2012). The global diversity of birds in space and time. *Nature* 491, 444–448. doi: 10.1038/nature11631
- Jokimäki, J., Kaisanlahti-Jokimäki, M. L., Sorace, A., Fernández-Juricic, E., Rodríguez-Prieto, I., and Jimenez, M. D. (2005). Evaluation of the “safe nesting zone” hypothesis across an urban gradient: a multi-scale study. *Ecography* 28, 59–70. doi: 10.1111/j.0906-7590.2005.04001.x
- Laurila, A., Lindgren, B., and Laugen, A. T. (2008). Antipredator defenses along a latitudinal gradient in *Rana temporaria*. *Ecology* 89, 1399–1413. doi: 10.1890/07-1521.1
- Levey, D. J., Londoño, G. A., Ungvari-Martin, J., Hiersoux, M. R., Jankowski, J. E., Poulsen, J. R., et al. (2009). Urban mockingbirds quickly learn to identify individual humans. *Proc. Natl. Acad. Sci. U.S.A.* 106, 8959–8962. doi: 10.1073/pnas.0811422106
- Maklakov, A. A., Immler, S., Gonzalez-Voyer, A., Rönn, J., and Kolm, N. (2011). Brains and the city: big-brained passerine birds succeed in urban environments. *Biol. Lett.* 7, 730–732. doi: 10.1098/rsbl.2011.0341
- Martin, T. E., and Clobert, J. (1996). Nest predation and avian life-history evolution in Europe versus North America: a possible role of humans? *Am. Nat.* 147, 1028. doi: 10.1086/285891
- Marzluff, J., Bowman, R., and Donnelly, R. (2001). “A historical perspective on urban bird research: trend, terms, and approaches,” in *Avian Ecology and Conservation in an Urbanizing World*, eds M. Jm, R. Bowman, and R. Donnelly (New York, NY: Kluwer Academic Publisher), 20–47. doi: 10.1007/978-1-4615-1531-9
- McDonald, R. I. (2008). Global urbanization: can ecologists identify a sustainable way forward? *Front. Ecol. Environ.* 6, 99–104. doi: 10.1890/070038
- McGiffin, A., Lill, A., Beckman, J., and Johnstone, C. P. (2013). Tolerance of human approaches by Common Mynas along an urban-rural gradient. *Emu* 113, 154–160. doi: 10.1071/MU12107
- Møller, A. P. (2009). Successful city dwellers: a comparative study of the ecological characteristics of urban birds in the Western Palearctic. *Oecologia* 159, 849–858. doi: 10.1007/s00442-008-1259-8
- Møller, A. P. (2012). Urban areas as refuges from predators and flight distance of prey. *Behav. Ecol.* 23, 1030–1035. doi: 10.1093/beheco/ars067

- Møller, A. P. (2015). "Birds," in *Escaping from Predators: An Integrative View of Escape Decisions*, eds W. E. Cooper Jr. and D. T. Blumstein (New York, NY: Cambridge University Press), 88–112.
- Møller, A. P., and Erritzoe, J. (2014). Predator-prey interactions, flight initiation distance and brain size. *J. Evol. Biol.* 27, 34–42. doi: 10.1111/jeb.12272
- Møller, A. P., and Ibáñez-Álamo, J. D. (2012). Escape behaviour of birds provides evidence of predation being involved in urbanization. *Anim. Behav.* 84, 341–348. doi: 10.1016/j.anbehav.2012.04.030
- Møller, A. P., Díaz, M., Grim, T., Dvorská, A., Flensted-Jensen, E., Ibáñez-Álamo, J. D., et al. (2015). Effects of urbanization on bird phenology: a continental study of paired urban and rural populations. *Clim. Res.* 66, 185–199. doi: 10.3354/cr01344
- Møller, A. P., Samia, D. S. M., Weston, M. A., Guay, P. J., and Blumstein, D. T. (2016). Flight initiation distances in relation to sexual dichromatism and body size in birds from three continents. *Biol. J. Linn. Soc.* 117, 823–831. doi: 10.1111/bij.12706
- Møller, A. P., Samia, D. S. M., Weston, M. A., Guay, P.-J., and Blumstein, D. T. (2014). American exceptionalism: population trends and flight initiation distances in birds from three continents. *PLoS ONE* 9:e107883. doi: 10.1371/journal.pone.0107883
- Nakagawa, S., and Cuthill, I. C. (2007). Effect size, confidence interval and statistical significance: a practical guide for biologists. *Biol. Rev. Camb. Philos. Soc.* 82, 591–605. doi: 10.1111/j.1469-185X.2007.00027.x
- Pulliam, H. (1973). On the advantages of flocking. *J. Theor. Biol.* 38, 419–422. doi: 10.1016/0022-5193(73)90184-7
- R Core Team (2014). *R: A Language and Environment for Statistical Computing*. Vienna: R Foundation for Statistical Computing. Available online at: <http://www.R-project.org/>
- Reimers, E., Miller, F. L., Eftestøl, S., Colman, J. E., and Dahle, B. (2006). Flight by feral reindeer *Rangifer tarandus tarandus* in response to a directly approaching human on foot or on skis. *Wildlife Biol.* 12, 403–413. doi: 10.2981/0909-6396(2006)12[403:FBFRRT]2.0.CO;2
- Runyan, A. M., and Blumstein, D. T. (2004). Do individual differences influence flight initiation distance? *J. Wildl. Manage.* 68, 1124–1129. doi: 10.2193/0022-541X(2004)068[1124:DIDIFI]2.0.CO;2
- Samia, D. S. M., and Blumstein, D. T. (2014). Phi index: a new metric to test the flush early and avoid the rush hypothesis. *PLoS ONE* 9:e113134. doi: 10.1371/journal.pone.0113134
- Samia, D. S. M., Blumstein, D. T., Stankowich, T., and Cooper, W. E. Jr. (2016). Fifty years of chasing lizards: new insights advance optimal escape theory. *Biol. Rev.* 91, 349–366. doi: 10.1111/brv.12173
- Samia, D. S. M., Møller, A. P., and Blumstein, D. T. (2015a). Brain size as a driver of avian escape strategy. *Sci. Rep.* 5:11913. doi: 10.1038/srep11913
- Samia, D. S. M., Møller, A. P., Blumstein, D. T., Stankowich, T., and Cooper, W. E. Jr. (2015b). Sex differences in lizard escape decisions vary with latitude, but not sexual dimorphism. *Proc. R. Soc. B* 282, 20150050. doi: 10.1098/rspb.2015.0050
- Samia, D. S. M., Nakagawa, S., Nomura, F., Rangel, T. F., and Blumstein, D. T. (2015c). Increased tolerance to humans among disturbed wildlife. *Nat. Commun.* 6, 1–8. doi: 10.1038/ncomms9877
- Samia, D. S. M., Nomura, F., and Blumstein, D. T. (2013). Do animals generally flush early and avoid the rush? A meta-analysis. *Biol. Lett.* 9:20130016. doi: 10.1098/rsbl.2013.0016
- Schemske, D. W., Mittelbach, G. G., Cornell, H. V., Sobel, J. M., and Roy, K. (2009). Is there a latitudinal gradient in the importance of biotic interactions? *Annu. Rev. Ecol. Syst.* 40, 245–269. doi: 10.1146/annurev.ecolsys.39.110707.173430
- Sol, D., Duncan, R. P., Blackburn, T. M., Cassey, P., and Lefebvre, L. (2005). Big brains, enhanced cognition, and response of birds to novel environments. *Proc. Natl. Acad. Sci. U.S.A.* 102, 5460–5465. doi: 10.1073/pnas.0408145102
- Sol, D., Lapiedra, O., and González-Lagos, C. (2013). Behavioural adjustments for a life in the city. *Anim. Behav.* 85, 1101–1112. doi: 10.1016/j.anbehav.2013.01.023
- Stankowich, T., and Blumstein, D. T. (2005). Fear in animals: a meta-analysis and review of risk assessment. *Proc. R. Soc. B* 272, 2627–2634. doi: 10.1098/rspb.2005.3251
- United Nations (2014). *World Urbanization Prospects, the 2014 Revision*. New York, NY: Department of Economic and Social Affairs, Population Division.
- Viechtbauer, W. (2010). Conducting meta-analyses in R with the metafor package. *J. Stat. Softw.* 36, 1–48. doi: 10.18637/jss.v036.i03
- Ydenberg, R. C., and Dill, L. M. (1986). The economics of fleeing from predators. *Adv. Study Behav.* 16, 229–249. doi: 10.1016/S0065-3454(08)60192-8

Conflict of Interest Statement: The authors declare that the research was conducted in the absence of any commercial or financial relationships that could be construed as a potential conflict of interest.

Copyright © 2017 Samia, Blumstein, Díaz, Grim, Ibáñez-Álamo, Jokimäki, Tätté, Markó, Tryjanowski and Møller. This is an open-access article distributed under the terms of the Creative Commons Attribution License (CC BY). The use, distribution or reproduction in other forums is permitted, provided the original author(s) or licensor are credited and that the original publication in this journal is cited, in accordance with accepted academic practice. No use, distribution or reproduction is permitted which does not comply with these terms.