

# Safety and efficacy of nivolumab plus ipilimumab in patients with advanced non-clear cell renal cell carcinoma: results from the phase 3b/4 CheckMate 920 trial

Scott S Tykodi <sup>1,2</sup>, Lucio N Gordan,<sup>3</sup> Robert S Alter,<sup>4</sup> Edward Arrowsmith,<sup>5</sup> Michael R Harrison,<sup>6</sup> Ivor Percent,<sup>7</sup> Rakesh Singal,<sup>8</sup> Peter Van Veldhuizen,<sup>9</sup> Daniel J George <sup>6</sup>, Thomas Hutson,<sup>10</sup> Joshua Zhang,<sup>11</sup> Jesus Zoco,<sup>12</sup> Jennifer L Johansen,<sup>13</sup> Arash Rezazadeh Kalebasty<sup>14</sup>

**To cite:** Tykodi SS, Gordan LN, Alter RS, *et al.* Safety and efficacy of nivolumab plus ipilimumab in patients with advanced non-clear cell renal cell carcinoma: results from the phase 3b/4 CheckMate 920 trial. *Journal for ImmunoTherapy of Cancer* 2022;**10**:e003844. doi:10.1136/jitc-2021-003844

► Additional supplemental material is published online only. To view, please visit the journal online (<http://dx.doi.org/10.1136/jitc-2021-003844>).

Accepted 14 January 2022



© Author(s) (or their employer(s)) 2022. Re-use permitted under CC BY-NC. No commercial re-use. See rights and permissions. Published by BMJ.

For numbered affiliations see end of article.

## Correspondence to

Dr Scott S Tykodi;  
stykodi@fredhutch.org

## ABSTRACT

**Background** CheckMate 920 (NCT02982954) is a multicohort, phase 3b/4 clinical trial of nivolumab plus ipilimumab treatment in predominantly US community-based patients with previously untreated advanced renal cell carcinoma (RCC) and clinical features mostly excluded from phase 3 trials. We report safety and efficacy results from the advanced non-clear cell RCC (nccRCC) cohort of CheckMate 920.

**Methods** Patients with previously untreated advanced/metastatic nccRCC, Karnofsky performance status  $\geq 70\%$ , and any International Metastatic Renal Cell Carcinoma Database Consortium risk received up to four doses of nivolumab 3 mg/kg plus ipilimumab 1 mg/kg every 3 weeks followed by nivolumab 480 mg every 4 weeks for  $\leq 2$  years or until disease progression/unacceptable toxicity. The primary endpoint was incidence of grade  $\geq 3$  immune-mediated adverse events (AEs) within 100 days of last dose of study drug. Key secondary endpoints included objective response rate (ORR), progression-free survival (PFS; both investigator-assessed), time to response (TTR), and duration of response (DOR), all using RECIST V.1.1. Overall survival (OS) was exploratory.

**Results** Fifty-two patients with nccRCC (unclassified histology, 42.3%; papillary, 34.6%; chromophobe, 13.5%; translocation-associated, 3.8%; collecting duct, 3.8%; renal medullary, 1.9%) received treatment. With 24.1 months minimum study follow-up, median duration of therapy (range) was 3.5 (0.0–25.8) months for nivolumab and 2.1 (0.0–3.9) months for ipilimumab. Median (range) number of doses received was 4.5 (1–28) for nivolumab and 4.0 (1–4) for ipilimumab. Grade 3–4 immune-mediated AEs were diarrhea/colitis (7.7%), rash (5.8%), nephritis and renal dysfunction (3.8%), hepatitis (1.9%), adrenal insufficiency (1.9%), and hypophysitis (1.9%). No grade 5 immune-mediated AEs occurred. ORR (n=46) was 19.6% (95% CI 9.4 to 33.9). Two patients achieved complete response (papillary, n=1; unclassified, n=1), seven achieved partial response (papillary, n=4; unclassified, n=3), and 17 had stable disease. Median TTR was 2.8 (range 2.1–14.8) months. Median DOR was not

reached (range 0.0+–27.8+); eight of nine responders remain without reported progression. Median PFS (n=52) was 3.7 (95% CI 2.7 to 4.6) months. Median OS (n=52) was 21.2 (95% CI 16.6 to not estimable) months.

**Conclusions** Nivolumab plus ipilimumab for previously untreated advanced nccRCC showed no new safety signals and encouraging antitumor activity.

**Trial registration number** NCT02982954.

## INTRODUCTION

Collectively, non-clear cell renal cell carcinoma (nccRCC) represents approximately 20%–30% of RCC tumors, with the remaining cases having a clear cell histology (ccRCC).<sup>1–3</sup> A number of histological subtypes comprise nccRCC, including papillary, chromophobe, collecting duct, medullary, microphthalmia-associated transcription factor family translocation, and unclassified.<sup>4</sup> Because of the heterogeneity and rarity of nccRCC, most prospective RCC clinical trials have included only patients with ccRCC-predominant histology, or a small proportion of patients with nccRCC.<sup>5</sup> As such, systemic therapy options for nccRCC tend to be based on ccRCC trials and retrospective studies.<sup>5,6</sup> However, when compared with ccRCC, systemic therapies for nccRCC are less effective with lower response rates and worse survival outcomes.<sup>7–9</sup> In treatment guidelines, preferred regimens for metastatic nccRCC currently include enrolment in clinical trials or use of cabozantinib or sunitinib.<sup>8</sup> Other recommended treatment options include lenvatinib plus everolimus, which has shown encouraging antitumor efficacy in a recent prospective phase 2 trial, as well as nivolumab and pembrolizumab.<sup>8,10</sup>

Retrospective studies and, more recently, prospective clinical trials have evaluated the antitumor activity of immune checkpoint inhibitors (ICIs) for nccRCC, either as a monotherapy (nivolumab,<sup>11,12</sup> pembrolizumab<sup>13</sup>) or in combination with a targeted agent (atezolizumab plus vascular endothelial growth factor (VEGF) inhibitor bevacizumab,<sup>14</sup> durvalumab plus mesenchymal-epithelial transition inhibitor savolitinib<sup>15</sup>). Despite differences between studies in the proportion of each histologic subtype and line of therapy, objective responses have been reported in patients treated with single-agent ICIs (objective response rate (ORR) 14%–27%) and ICI-targeted agent combinations (ORR 26%–27%).<sup>11–15</sup>

The long-term efficacy and tolerability of nivolumab plus ipilimumab for previously untreated advanced RCC demonstrated in the registrational CheckMate 214 clinical trial were described based on results in patients with advanced RCC and a predominantly clear cell component.<sup>16–18</sup> Nivolumab 3 mg/kg plus ipilimumab 1 mg/kg every 3 weeks for four doses followed by nivolumab 240 mg every 2 weeks or 480 mg every 4 weeks was subsequently approved by the US Food and Drug Administration and the European Medicines Agency for previously untreated International Metastatic Renal Cell Carcinoma Database Consortium (IMDC) intermediate/poor-risk advanced RCC.<sup>19,20</sup> Limited available retrospective data of the clinical activity of nivolumab plus ipilimumab in nccRCC have shown promising antitumor responses.<sup>21,22</sup> However, prospective data are needed to inform the use of nivolumab plus ipilimumab in the previously untreated advanced nccRCC setting.

CheckMate 920 is a prospective, multicohort clinical trial conducted largely in a US community practice setting and designed to assess the safety profile of nivolumab plus ipilimumab treatment for patients with previously untreated advanced RCC and clinical features mostly excluded from phase 3 trials (eg, nccRCC, brain metastases, and low Karnofsky performance status (KPS)).<sup>23</sup> We hypothesized that the safety profile of nivolumab plus ipilimumab in these select patients, treated predominantly within a community-based setting, would be similar to those with untreated advanced RCC and a predominantly clear cell component treated in an international academic center-based setting. Here, we report the safety and efficacy results for patients with advanced nccRCC from CheckMate 920 in cohort 2.

## METHODS

### Study design and patients

Methods have been described in detail previously.<sup>23</sup> CheckMate 920 (NCT02982954) is a non-randomized, open-label, multicohort, phase 3b/4 clinical trial of nivolumab plus ipilimumab treatment in patients with previously untreated advanced or metastatic RCC. Enrolled patients were assigned to one of four cohorts based on RCC histology, the presence of brain metastases, and KPS: predominantly ccRCC with KPS of at least 70%

(cohort 1); nccRCC with KPS of at least 70% (cohort 2); cc/nccRCC with non-active brain metastases and KPS of at least 70% (cohort 3); and cc/nccRCC with KPS of 50%–60% (cohort 4).

In cohort 2, patients were included with advanced or metastatic histologically confirmed previously untreated nccRCC, no prior systemic therapy for RCC, KPS of at least 70%, measurable disease per Response Evaluation Criteria in Solid Tumors (RECIST) V.1.1, any IMDC risk, and available fresh or archival tumor tissue. One prior adjuvant or neoadjuvant therapy for completely resected RCC was allowed if it did not include ICIs and if recurrence occurred at least 6 months after the last dose of adjuvant or neoadjuvant therapy. Patients with autoimmune disease or a condition requiring systemic corticosteroids (>10 mg daily prednisone equivalent) or other immunosuppressive medications within 14 days of first dose of study drug were excluded. Patients received nivolumab 3 mg/kg plus ipilimumab 1 mg/kg every 3 weeks for up to four doses followed by nivolumab 480 mg every 4 weeks for up to 2 years or until disease progression, unacceptable toxicity, withdrawal of consent, or end of trial, whichever occurred first. Patients were permitted to continue treatment beyond progressive disease (per RECIST V.1.1) providing there was an investigator-assessed clinical benefit, tolerance of study drug, stable performance status, no delay to an imminent intervention to prevent serious complications of disease progression, and written informed consent. Patients who discontinued combination treatment early due to an adverse event (AE) may have been eligible to receive nivolumab 480 mg every 4 weeks, contingent on discussion with and approval by the medical monitor. The study will continue until the last enrolled patient completes 5 years of survival follow-up from the time of first visit.

### Endpoints and assessments

As described in detail previously,<sup>23</sup> the primary endpoint of CheckMate 920 was the incidence of high-grade (grade 3–4 and grade 5) immune-mediated AEs (specific events that occurred within 100 days of the last dose of study drug; were of any causality; had no clear alternate etiology based on investigator assessment, or with an immune-mediated component; and treated with immune-modulating medication (with the exception of endocrine events)). Secondary endpoints included characterization of high-grade immune-mediated AEs (including the percentage of patients who received immune-modulating medication (or hormonal replacement therapy), length of immune-modulating medication administration, percentage of patients who received corticosteroids  $\geq$ 40 mg prednisone or equivalent, time to onset, and time to resolution), and, using RECIST V.1.1, investigator-assessed ORR, time to response (TTR), duration of response (DOR), and investigator-assessed progression-free survival (PFS). Exploratory endpoints included the incidence of treatment-related AEs; investigator-assessed PFS-2 for patients treated beyond initial RECIST V.1.1-defined

progression (the time from first-dose baseline to the imaging-confirmed second progression (defined as an additional 20% increase in tumor volume from time of initial progression, including the sum of all target lesions and/or the development of new measurable lesions) or death from any cause, whichever occurred first); overall survival (OS); and clinical response by baseline tumor programmed death ligand 1 (PD-L1) expression. An analysis of ORR was also performed post hoc in patients with or without sarcomatoid features; and in patients with either IMDC favorable, intermediate, or poor risk. PD-L1 expression was evaluated using the validated Dako PD-L1 immunohistochemistry 28–8 pharmDx assay.

AEs were collected continuously during the treatment period and for at least 100 days after discontinuation of study treatment. Imaging assessments in cohort 2 were performed by CT/MRI during the screening period before the first dose, at 12 weeks ( $\pm 1$  week) after the first dose, every 8 weeks ( $\pm 1$  week) up to the first 13 months, then every 12 weeks ( $\pm 1$  week) until disease progression or treatment discontinuation.<sup>23</sup> Objective responses and progressive disease were confirmed by repeat scans per RECIST V.1.1.

### Statistical analyses

The planned sample size was determined largely by the feasibility concern and based on the incidence of high-grade immune-mediated AEs with nivolumab plus ipilimumab from phase 1 studies of advanced or metastatic RCC and non-small cell lung cancer. The estimated half-width of the 95% CI of high-grade immune-mediated AE rates was considered to be within an acceptable degree of precision.

Safety and efficacy analyses were conducted on the treated population (all patients who received any nivolumab). Objective response analyses were conducted on the response-evaluable population (all treated patients who had baseline and at least one on-study evaluable tumor measurement).<sup>23</sup>

As described previously,<sup>23</sup> immune-mediated AEs were summarized per National Cancer Institute Common Terminology Criteria for Adverse Events V.4.0. ORR was summarized using binomial response rates and two-sided 95% exact CIs using the Clopper-Pearson method.<sup>24</sup> TTR and DOR were summarized using Kaplan-Meier methodology; median values were calculated with two-sided 95% CIs using the Brookmeyer and Crowley method.<sup>25</sup> PFS, PFS-2 for patients treated beyond initial RECIST V.1.1-defined progression, and OS were summarized by Kaplan-Meier method; median values were calculated with two-sided 95% CI using the Brookmeyer and Crowley method.<sup>25 26</sup>

## RESULTS

### Patients

In a cohort of 52 patients with nccRCC who were treated (all treated patients), median age was 64 (range 23–86)

**Table 1** Patient demographics and characteristics at baseline for all treated patients

	All treated patients (N=52)
Age, median (range), years	64 (23–86)
Male, n (%)	36 (69.2)
IMDC risk group, n (%)	
Favorable	9 (17.3)
Intermediate	27 (51.9)
Poor	16 (30.8)
Karnofsky performance score, n (%)	
100	15 (28.8)
90	25 (48.1)
80	9 (17.3)
70	3 (5.8)
Prior nephrectomy, n (%)	35 (67.3)
Prior radiotherapy, n (%)	4 (7.7)
Histological subtype, n (%)	
Non-clear cell	52 (100)
Unclassified	22 (42.3)
Papillary	18 (34.6)
Chromophobe	7 (13.5)
Translocation-associated	2 (3.8)
Collecting duct	2 (3.8)
Renal medullary	1 (1.9)
Sarcomatoid features, n (%)	
Yes	15 (28.8)
No	37 (71.2)
Tumor PD-L1 expression, n (%)	n=39
<1%	24 (61.5)
$\geq 1\%$	15 (38.5)

IMDC, International Metastatic Renal Cell Carcinoma Database Consortium; PD-L1, programmed death ligand 1.

years, 69.2% were male, 100% had a KPS of at least 70%, 82.7% had IMDC intermediate/poor risk, and 28.8% had sarcomatoid features (table 1).

Most patients had a histological subtype of unclassified (42.3%) or papillary nccRCC (34.6%). Of the 15 patients with sarcomatoid features at baseline, eight had unclassified histology, three had papillary, three had chromophobe, and one had collecting duct. After a minimum study follow-up (the time from last patient first treatment in cohort two to last patient last visit) of 24.1 months, all patients had discontinued treatment and 55.8% received subsequent anticancer therapy. Of all treated patients, the most common reasons for treatment discontinuation were disease progression (50.0%) and study drug toxicity (19.2%) (online supplemental figure S1).

### Exposure

The median (range) duration of therapy was 3.5 (0.0–25.8) months for nivolumab and 2.1 (0.0–3.9) months

**Table 2** Incidence of immune-mediated AEs and corticosteroid use for grade 3–4 immune-mediated AEs

Immune-mediated AE* category, n (%)	All treated patients (N=52)		
	Any grade	Grade 3–4	Corticosteroid use† for grade 3–4
Rash	12 (23.1)	3 (5.8)	2 (3.8)
Diarrhea/colitis	7 (13.5)	4 (7.7)	3 (5.8)
Hypothyroidism/thyroiditis‡	5 (9.6)	0	–
Nephritis and renal dysfunction	2 (3.8)	2 (3.8)	2 (3.8)
Adrenal insufficiency‡	2 (3.8)	1 (1.9)	0
Hepatitis	2 (3.8)	1 (1.9)	1 (1.9)
Hypophysitis‡	2 (3.8)	1 (1.9)	1 (1.9)
Hyperthyroidism‡	2 (3.8)	0	–
Hypersensitivity	1 (1.9)	0	–
Pneumonitis	1 (1.9)	0	–

\*Specific events that occurred within 100 days of the last dose of study drug; were of any causality; had no clear alternate etiology based on investigator assessment, or with an immune-mediated component; and treated with immune-modulating medication (with the exception of endocrine events).

† $\geq 40$  mg prednisone or equivalent.

‡Considered endocrine immune-mediated AEs. AE, adverse event.

for ipilimumab (patients received up to four doses of nivolumab plus ipilimumab before receiving nivolumab monotherapy; online supplemental figure S1). Most patients (86.5%) received a dose intensity of 90% to  $<110\%$  for nivolumab and ipilimumab (as patient weight was used to calculate relative dose intensities, fluctuations in an individual patient's weight could result in a dose intensity above 100%). Overall, 28.8% received  $\leq 3$  nivolumab doses, 21.2% received 4 nivolumab doses, and 50.0% received  $\geq 5$  nivolumab doses; 30.8% received  $\leq 3$  ipilimumab doses and 69.2% received 4 ipilimumab doses. The median (range) number of doses received was 4.5 (1–28) for nivolumab and 4.0 (1–4) for ipilimumab. In total, 19 (36.5%) patients experienced at least one dose delay, most commonly due to AEs (22/43 total dose delays).

### Safety

The most frequent any-grade immune-mediated AEs were rash (23.1%), diarrhea/colitis (13.5%), and hypothyroidism/thyroiditis (9.6%; table 2). No grade 5 immune-mediated AEs were reported. Grade 3–4 immune-mediated AEs were diarrhea/colitis (7.7%), rash (5.8%), nephritis and renal dysfunction (3.8%), and adrenal insufficiency, hepatitis, and hypophysitis (1.9% each; table 2).

The percentage of patients receiving immune-modulating medication for each grade 3–4 immune-mediated AE (data not shown) was the same as the incidence of each respective grade 3–4 immune-mediated AE. Grade 3–4

immune-mediated AEs were managed with systemic corticosteroids, dermatological corticosteroids, and the immunosuppressive agents infliximab and mycophenolic acid. The median length of immune-modulating medication administration for grade 3–4 immune-mediated AEs ranged from 3.0 weeks (nephritis and renal dysfunction) to 120.1 weeks (hepatitis). Overall, 30.8% of all treated patients received continuous corticosteroid ( $\geq 40$  mg prednisone or equivalent) for any-grade immune-mediated AEs occurring within 100 days of the last dose of study drug (does not include patients who required adrenal replacement or corticosteroid  $\geq 40$  mg prednisone or equivalent for brain edema); 25.0% of patients received continuous corticosteroid for  $\geq 14$  days and 11.5% of patients received continuous corticosteroid for  $\geq 30$  days. Corticosteroid ( $\geq 40$  mg prednisone or equivalent) use for grade 3–4 immune-mediated AEs is shown in table 2.

Median time to onset of grade 3–4 immune-mediated AEs ranged from 6.1 (range 2.3–13.7; rash) weeks to 18.7 (range 18.7–18.7; hypophysitis) weeks (table 3).

Median time to resolution of grade 3–4 immune-mediated AEs ranged from 5.9 (range 0.9–16.9; diarrhea/colitis) weeks to 8.0 (range 3.1–69.9+; rash) weeks. Patients with grade 3–4 immune-mediated AEs resolved in most cases, with the exception of one case each of hepatitis, rash, and adrenal insufficiency. The case of grade 3 hepatitis was managed with prednisone, methylprednisolone, and mycophenolic acid; the case of grade 3 rash was managed with triamcinolone, desonide, and hydrocortisone; and the case of grade 3 adrenal insufficiency was managed with lactated Ringer's, prednisone, fludrocortisone, and hydrocortisone, and was downgraded to grade 2 (unresolved), which was managed with fludrocortisone and hydrocortisone.

Any-grade treatment-related AEs were reported by 92.3% of all treated patients, with the most frequent being fatigue (48.1%), diarrhea (30.8%) and nausea (26.9%; table 4).

There were no treatment-related deaths. Grade 3–4 treatment-related AEs occurred in 36.5% of all treated patients with the most common being lipase increased (7.7%) and rash maculo-papular (5.8%). Any-grade and grade 3–4 AEs leading to discontinuation occurred in 26.9% and 21.2% of all treated patients, respectively, with the most frequent being diarrhea (3.8% for both any-grade and grade 3–4 AEs) and malignant neoplasm progression reported as an AE (3.8% for both any-grade and grade 3–4 AEs).

### Efficacy

Median follow-up for survival (the time between first treatment date and last known date alive or death) was 19.0 months. Any reduction in the sum of the diameter of target lesions was observed in  $>50\%$  of response-evaluable patients (online supplemental figure S2). Investigator-assessed confirmed ORR per RECIST V.1.1 in response-evaluable patients (n=46) was 19.6% (95% CI 9.4% to 33.9%; table 5).

**Table 3** Time to onset and resolution of immune-mediated AEs

Immune-mediated AE category	Median (range) time to onset, weeks		Median (range) time to resolution,* weeks	
	Any grade	Grade 3–4	Any grade	Grade 3–4
Pneumonitis	n=1; 2.9 (2.9–2.9)	–	n=1; 0.4 (0.4–0.4)	–
Hepatitis	n=2; 6.1 (2.9–9.4)	n=1; 9.4 (9.4–9.4)	–	–
Nephritis/renal dysfunction	n=2; 9.4 (1.4–17.4)	n=2; 9.4 (1.4–17.4)	n=2; 7.8 (1.1–14.4)	n=2; 7.8 (1.1–14.4)
Rash	n=12; 6.1 (1.1–14.9)	n=3; 6.1 (2.3–13.7)	n=9; 4.4 (2.9–128.1+)	n=2; 8.0 (3.1–69.9+)
Diarrhea/colitis	n=7; 9.4 (0.7–44.4)	n=4; 10.4 (4.4–20.1)	n=5; 10.9 (1.7–113.0+)	n=4; 5.9 (0.9–16.9)
Hypersensitivity	n=1; 3.9 (3.9–3.9)	–	n=1; 0.1 (0.1–0.1)	–
Adrenal insufficiency†	n=2; 54.1 (12.7–95.4)	n=1; 12.7 (12.7–12.7)	–	–
Hyperthyroidism†	n=2; 20.6 (2.1–39.1)	–	n=2; 4.0 (3.9–4.1)	–
Hypophysitis†	n=2; 12.7 (6.7–18.7)	n=1; 18.7 (18.7–18.7)	n=2; 17.1 (7.6–26.6)	n=1; 7.6 (7.6–7.6)
Hypothyroidism/thyroiditis†	n=5; 6.1 (3.6–15.1)	–	n=1; NR (12.0+–134.1+)	–

Includes events reported between first dose and 100 days after last dose of study therapy.

\*Patients who experienced immune-related AEs without worsening from baseline grade were excluded from the time to resolution analysis. Events without a stop date or with a stop date equal to death are considered unresolved. For each patient, the longest duration of immune-mediated AEs where immune-modulating medication was initiated is considered.

†Considered endocrine immune-mediated AEs.

+, censored value; AE, adverse event; NR, not reached.

Two patients (4.3%) achieved complete response (papillary, n=1; unclassified, n=1), seven patients (15.2%) achieved partial response (papillary, n=4; unclassified, n=3), and 17 patients (37.0%) had stable disease. Investigator-assessed confirmed ORR per RECIST V.1.1 in patients with baseline tumor PD-L1 expression <1% or ≥1% was 14.3% (95% CI 3.0% to 36.3%) and 30.8% (95% CI 9.1% to 61.4%), respectively (table 5). Among subgroups in a post hoc analysis, investigator-assessed confirmed ORR per RECIST V.1.1 in patients with the presence

or absence of sarcomatoid features was 35.7% (95% CI 12.8% to 64.9%) and 12.5% (95% CI 3.5% to 29.0%), respectively, and in IMDC favorable-risk, intermediate-risk, and poor-risk patients was 12.5% (95% CI 0.3% to 52.7%), 20.0% (95% CI 6.8% to 40.7%), and 23.1% (95% CI 5.0% to 53.8%), respectively (table 5). Median TTR in all treated patients was 2.8 (range 2.1–14.8) months and median DOR was not reached (range 0.0+–27.8+); eight of nine responders remained without reported progression at the time of database lock, even though treatment had been discontinued. Of the two responders who received subsequent systemic anticancer therapy, both received nivolumab.

Median PFS in all treated patients was 3.7 (95% CI 2.7 to 4.6) months (figure 1), and in IMDC favorable-risk, intermediate-risk, and poor-risk patients was 3.6 (95% CI 2.6 to NE; n=9) months, 4.3 (95% CI 2.6 to 10.4; n=27) months, and 2.8 (95% CI 1.3 to 4.7; n=16) months, respectively. Median PFS-2 for 12 patients treated beyond initial RECIST V.1.1-defined progression was 16.6 (95% CI 7.7 to 27.9) months (online supplemental figure S3).

Median OS (N=52) was 21.2 (95% CI 16.6 to not estimable (NE)) months; the probability of survival at 12 and 18 months was 72.6% (95% CI 58.1% to 82.8%) and 64.5% (95% CI 49.7% to 76.0%), respectively (figure 2). Median OS among IMDC favorable-risk, intermediate-risk, and poor-risk patients was not reached (95% CI 4.1 to NE; n=9), 22.7 (95% CI 16.6 to NE; n=27) months, and 16.6 (95% CI 4.5 to 27.9; n=16) months, respectively.

## DISCUSSION

The non-randomized, open-label, multicohort, phase 3b/4 CheckMate 920 clinical trial was conducted largely in US community-based practices to evaluate nivolumab

**Table 4** Treatment-related AEs reported in ≥10% of all treated patients

	All treated patients (N=52)	
	Any grade	Grade 3–4
Total patients with a treatment-related AE, n (%)	48 (92.3)	19 (36.5)
Treatment-related AEs in ≥10% of all treated patients, n (%)		
Fatigue	25 (48.1)	2 (3.8)
Diarrhea	16 (30.8)	2 (3.8)
Nausea	14 (26.9)	0
Vomiting	10 (19.2)	0
Rash maculo-papular	9 (17.3)	3 (5.8)
Pruritus	9 (17.3)	0
Decreased appetite	9 (17.3)	0
Lipase increased	6 (11.5)	4 (7.7)
Muscular weakness	6 (11.5)	1 (1.9)
Pyrexia	6 (11.5)	0

Includes events reported between first dose and 100 days after last dose of study therapy. AE, adverse event.

**Table 5** Investigator-assessed objective response per RECIST V.1.1 in response-evaluable patients

Outcome	Response-evaluable patients (N=46)
Investigator-assessed confirmed ORR per RECIST V.1.1 (95% CI), %	19.6 (9.4 to 33.9)
BOR, n (%)	
Complete response	2 (4.3)*
Partial response	7 (15.2)†
Stable disease	17 (37.0)
Progressive disease	19 (41.3)
Unable to determine	1 (2.2)
Investigator-assessed confirmed ORR per RECIST V.1.1 among subgroups (95% CI), %	
Baseline tumor PD-L1 expression <1% (n=21)	14.3 (3.0 to 36.3)
Baseline tumor PD-L1 expression ≥1% (n=13)	30.8 (9.1 to 61.4)
Presence of sarcomatoid features (n=14)	35.7 (12.8 to 64.9)
Absence of sarcomatoid features (n=32)	12.5 (3.5 to 29.0)
IMDC favorable risk (0; n=8)	12.5 (0.3 to 52.7)
IMDC intermediate risk (1–2; n=25)	20.0 (6.8 to 40.7)
IMDC poor risk (3–6; n=13)	23.1 (5.0 to 53.8)
Median TTR (range), months	2.8 (2.1–14.8)
Median DOR (range), months	NR (0.0+–27.8+)

\*One patient with papillary and one patient with unclassified histology.

†Four patients with papillary and three patients with unclassified histology.

+, censored value; BOR, best overall response; DOR, duration of response; IMDC, International Metastatic Renal Cell Carcinoma Database Consortium; NR, not reached; ORR, objective response rate; PD-L1, programmed death ligand 1; RECIST, Response Evaluation Criteria in Solid Tumors; TTR, time to response.

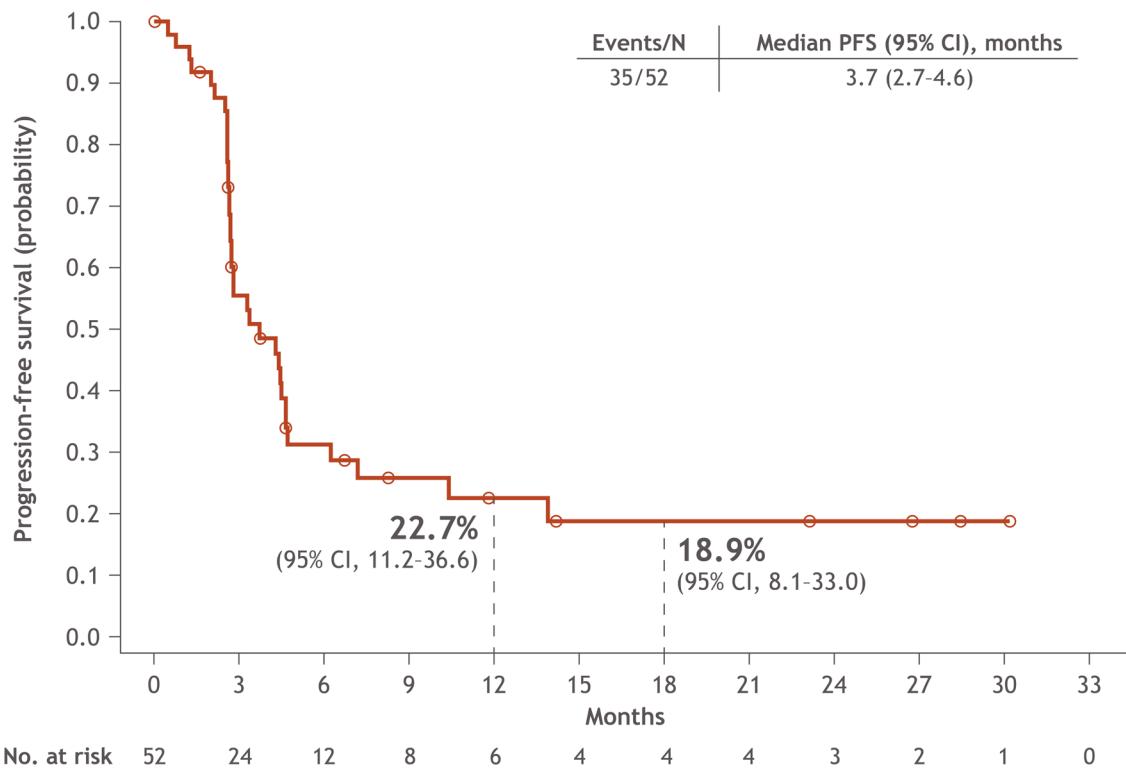
plus ipilimumab in patients with previously untreated advanced RCC with clinical features mostly excluded from phase 3 trials. To our knowledge, the cohort of patients with previously untreated advanced nccRCC from CheckMate 920 is the first prospective study of nivolumab plus ipilimumab in this setting to date. Overall, the safety profile of nivolumab 3 mg/kg plus ipilimumab 1 mg/kg every 3 weeks for up to four doses followed by nivolumab 480 mg every 4 weeks for previously untreated advanced nccRCC was as expected, and no new safety signals were identified. The dosing used in this cohort is currently approved by the US Food and Drug Administration and the European Medicines Agency for patients with previously untreated RCC, regardless of histology.<sup>19 20</sup> Few patients reported grade 3–4 immune-mediated AEs and no grade 5 immune-mediated AEs occurred. The safety profile and incidence of immune-mediated AEs in this

trial were generally consistent with nivolumab plus ipilimumab for patients with previously untreated advanced RCC and a predominantly clear cell component in the registrational CheckMate 214 trial.<sup>17 27</sup> In total, 69.2% of patients received the maximum four doses of ipilimumab, which is comparable with the level reported in CheckMate 214 (79%), in which patients were required to have received all four doses of ipilimumab before receiving nivolumab monotherapy.<sup>16</sup> The incidence and type of the most frequent grade 3–4 immune-mediated AEs after 24.1 months minimum study follow-up (diarrhea/colitis, 7.7%; rash, 5.8%) were mostly similar with those reported in CheckMate 214 after 17.5 months minimum follow-up (diarrhea/colitis, 5%; rash, 3%) and from data pooled across 666 patients with RCC or metastatic colorectal cancer receiving nivolumab plus ipilimumab (grade 3 immune-mediated colitis, 4.4%; grade 3 immune-mediated rash, 3.5%).<sup>19 27</sup>

Encouraging antitumor activity and survival was observed; ORR tended to be higher in patients with sarcomatoid features, which is consistent with the efficacy benefit of nivolumab plus ipilimumab or ICI-VEGF-targeted agent combinations over sunitinib in this setting,<sup>28</sup> and durable responses were seen in patients with papillary and unclassified histology. Notably, the proportion of patients with unclassified histology in this largely US community center-based trial (42.3%) is higher than reported previously in other prospective clinical trials (~6%–20%)<sup>10 11 13 29 30</sup> and retrospective studies (~7%–34%) of nccRCC.<sup>9 12 21 22 31 32</sup> However, cases of unclassified and other histologic subtypes determined at each site were not confirmed by central laboratory testing in this study.

Although reported separately in this trial (unlike CheckMate 214), efficacy measures were not significantly different between IMDC intermediate-risk and poor-risk groups, suggesting that neither of these subgroups have contributed disproportionately to the efficacy outcomes in this cohort of CheckMate 920. PFS-2 showed a clinical benefit of nivolumab plus ipilimumab in some patients treated beyond initial RECIST V.1.1-defined progression. The observed antitumor activity in this trial appears to be lower across most efficacy measures relative to that reported in patients with advanced RCC with a predominantly clear cell component from CheckMate 214 after 30 months minimum follow-up.<sup>17</sup> Notably, however, in both CheckMate 920 and CheckMate 214 (30 months minimum follow-up, intention-to-treat population) the median TTR and median DOR were 2.8 months and not reached, respectively.<sup>33</sup>

The limited existing retrospective data of nivolumab plus ipilimumab clinical activity in nccRCC have also reported promising antitumor responses. In a retrospective study of 18 patients with nccRCC who received nivolumab plus ipilimumab, of whom 13 (72%) were untreated, ORR was 33.3%, 17% of patients had stable disease, median DOR was 4.3 months, and of six patients with a response, three had an ongoing response after a

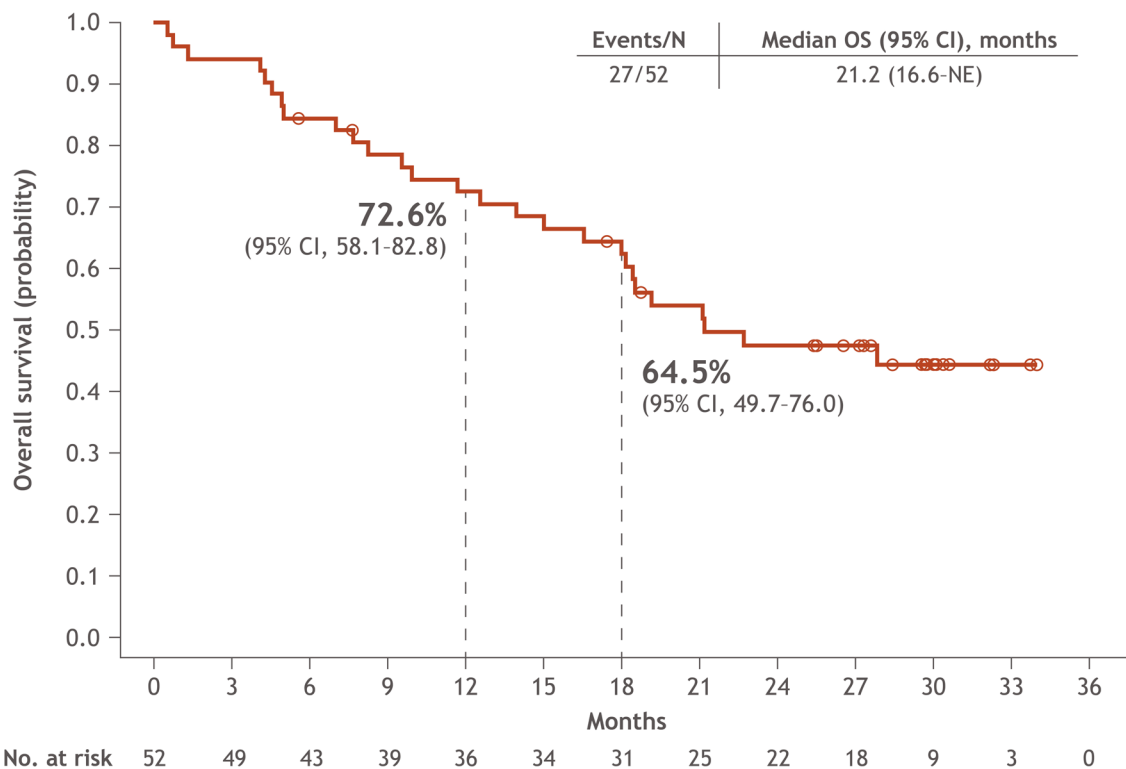


**Figure 1** Kaplan-Meier plot of PFS per investigator assessment in all treated patients. PFS, progression-free survival.

median follow-up of 6.8 months.<sup>22</sup> Median PFS was 7.1 months; two patients were treated beyond progression and experienced further progression without radiographic tumor shrinkage.<sup>22</sup> In contrast, a lower ORR was

observed in CheckMate 920 but a greater proportion of patients had stable disease (37.0%).

Two separate retrospective analyses included patients receiving nivolumab plus ipilimumab among patients



**Figure 2** Kaplan-Meier plot of OS in all treated patients. NE, not estimable; OS, overall survival.

receiving other immune-oncology regimens.<sup>21–32</sup> McKay *et al* reported outcomes from an analysis of largely previously treated patients with nccRCC, or ccRCC with sarcomatoid differentiation, who received programmed death-1/PD-L1 monotherapy or in combination with ipilimumab or a VEGF-targeted therapy. After a median follow-up of 11.4 months, ORR was 19%, 33% of patients had stable disease, and median OS was 12.9 months.<sup>21</sup> Separately, Chahoud *et al* reported outcomes from 40 predominantly previously treated patients with nccRCC, of whom 31 received nivolumab monotherapy, and nine received nivolumab in combination with ipilimumab or VEGF-targeted therapy.<sup>32</sup> For the total cohort, ORR was 20.6% (44.4% for the nine patients receiving combination therapy), median PFS was 4.9 months (~45 months for patients receiving combination therapy), and median OS was 21.7 months (NR for patients receiving combination therapy) after a median follow-up of 24.5 months.<sup>32</sup> Although differences in the proportion of tumor histologic subtypes, the number of prior systemic therapies, and available follow-up preclude direct comparison, our prospective data from CheckMate 920 add to the existing retrospective clinical evidence for nivolumab plus ipilimumab antitumor activity and durable responses seen in patients with advanced nccRCC.

Current treatment guidelines for advanced nccRCC are based on limited evidence from phase 2 trials, retrospective studies, and a meta-analysis; our study adds much-needed prospective data to inform clinical practice. The efficacy data for nivolumab plus ipilimumab reported here are comparable with prospective nccRCC data used to support the National Comprehensive Cancer Network preferred regimens cabozantinib (ORR, 23%; median PFS, 9.0 months; median OS, 20.0 months)<sup>34</sup> and sunitinib (ORR, 6%–18%; median PFS, 6.1–8.3 months; median OS, 16.2–31.5 months)<sup>29–30</sup>; as well as the other recommended treatment options lenvatinib plus everolimus (ORR, 26%; PFS, 9.2 months; OS, 15.6 months)<sup>10</sup> and pembrolizumab (ORR, 27%; median PFS, 4.2 months; median OS, 28.9 months).<sup>13</sup> Nivolumab as a recommended treatment option is currently supported by retrospective data,<sup>12–21</sup> however, prospective data are available (ORR, 13.6%; median PFS, 2.2 months; median OS, 16.3 months).<sup>11</sup>

This large prospective cohort of previously untreated patients with nccRCC undergoing dual ICI treatment was not without limitations. Due to a small number of patients with advanced nccRCC, efficacy analyses by baseline tumor PD-L1 expression level, in patients with sarcomatoid features, and by IMDC risk should be interpreted with caution. Other limitations include the non-randomized nature of the trial, the lack of a standard-of-care comparator arm, and absence of central laboratory testing to confirm nccRCC histology. The ongoing large phase 2 SUNNIFORECAST trial of nivolumab plus ipilimumab versus standard of care for previously untreated advanced/metastatic nccRCC will provide additional prospective comparative data

in this population with high unmet medical need (NCT03075423).

In conclusion, the safety profile of the approved nivolumab plus ipilimumab dosing regimen for predominantly clear cell advanced RCC given in the previously untreated advanced nccRCC setting did not identify any new safety signals. These data support the safe administration of nivolumab plus ipilimumab for a heterogeneous and difficult-to-treat patient population. Encouraging antitumor activity and survival were observed; durable responses were seen in patients with papillary and unclassified histology. Taken together, data from the CheckMate 920 trial support nivolumab plus ipilimumab as a first-line treatment option for select patients with advanced/metastatic nccRCC.

#### Author affiliations

<sup>1</sup>Division of Medical Oncology, University of Washington, Seattle, Washington, USA

<sup>2</sup>Clinical Research Division, Fred Hutchinson Cancer Research Center, Seattle, Washington, USA

<sup>3</sup>Florida Cancer Specialists, Gainesville, Florida, USA

<sup>4</sup>John Theurer Cancer Center, Hackensack University Medical Center, Hackensack, New Jersey, USA

<sup>5</sup>Sarah Cannon Research Institute/Tennessee Oncology, PLLC, Chattanooga, Tennessee, USA

<sup>6</sup>Duke Cancer Institute Center for Prostate and Urologic Cancers, Durham, North Carolina, USA

<sup>7</sup>Florida Cancer Specialists, Port Charlotte, Florida, USA

<sup>8</sup>Sylvester Comprehensive Cancer Center, Miami, Florida, USA

<sup>9</sup>Department of Medicine, University of Rochester Medical Center, Rochester, New York, USA

<sup>10</sup>Texas A&M University College of Medicine, Bryan, Texas, USA

<sup>11</sup>Department of Clinical Research, Bristol Myers Squibb, Princeton, New Jersey, USA

<sup>12</sup>Syneos Health, Braine l'Alleud, Belgium

<sup>13</sup>US Medical Immunology & Fibrosis, Bristol Myers Squibb, Princeton, New Jersey, USA

<sup>14</sup>Norton Cancer Institute, Norton Healthcare, Louisville, Kentucky, USA

**Acknowledgements** The authors would like to acknowledge the patients and families who made this study possible; the clinical study teams who participated in the study; Dako, an Agilent Technologies company, for collaborative development of the PD-L1 immunohistochemistry 28-8 pharmDx assay (Santa Clara, CA); Bristol Myers Squibb (Princeton, NJ) and ONO Pharmaceutical Company Ltd. (Osaka, Japan); and the contributions of Nicole Thompson as global trial manager and Margarita Askelson as biostatistician. All authors contributed to and approved the manuscript; writing and editorial assistance was provided by Tom Vizard, PhD, of Parexel, funded by Bristol Myers Squibb.

**Contributors** Conceptualization: SST, DJG, TH, JZh, JLJ and ARK; data curation: JZh, JZ; formal analysis: JZ; investigation: SST, LNG, RSA, EA, MH, IP, RS, PVV, DJG, TH and ARK; methodology: JLJ; writing-original draft, all authors; writing-review and editing, all authors; guarantor: SST.

**Funding** This work was supported by Bristol Myers Squibb.

**Competing interests** The following represents disclosure information provided by authors of this manuscript. All relationships are considered compensated. Relationships are self-held unless noted. Relationships may not relate to the subject matter of this manuscript. SST reports consulting or advisory role from Merck, Intellisphere, Natera, Bristol Myers Squibb (BMS) and Exelixis; patent pending (institution); and research funding (all institution) from Genentech, BMS, Merck, Calithera Biosciences, Pfizer, Jounce Therapeutics, Nektar, Exelixis, and Clinigen Group. LNG reports employment from Florida Medical Clinic; leadership from Florida Cancer Specialists; honoraria from Ameris Pharma; consulting or advisory role from Janssen Oncology; and speakers bureau from Myriad Genetics. RSA reports consulting or advisory role from Eisai, Bayer, Janssen Biotech, EMD Serono; and speakers bureau from Astellas Pharma, Janssen Oncology, Bayer, and Pfizer. EA reports employment from Tennessee Oncology; travel accommodation,



expenses from Flatiron Health, OneOncology, Sarah Cannon Research Institute; other relationship from Sarah Cannon Research Institute; stock or other ownership interests from OneOncology; and research funding (all institution) from AstraZeneca, Boehringer Ingelheim, BMS, Calistoga Pharmaceuticals, Celgene, Cephalon, Chorus, Cougar Biotechnology, Eisai, EMD Serono, Evelo Biosciences, Exelixis, Genentech, Gilead Sciences, Incyte, Merck, Millennium, Modra Pharmaceuticals, Novartis, OncoGenex, Onyx, Pelton Therapeutics, Pfizer, Sarah Cannon Research Institute, Takeda, Clovis Oncology, Lilly, Infinity Pharmaceuticals, and Janssen Research & Development. MRH reports consulting or advisory role from Bayer, Exelixis, Genentech, Fujifilm, Janssen Oncology, AstraZeneca, Pfizer, and BMS; speakers bureau from Genentech and Exelixis; and research funding (all institution) from BMS, Genentech, Pfizer, Merck, Clovis Oncology, Acta Pharma, AstraZeneca, Astellas Pharma, Bayer, Exelixis, and Seattle Genetics. IP has nothing to disclose. RS reports consulting or advisory role from Aveo Pharmaceuticals, Janssen Scientific Affairs, and Dendreon. PV reports honoraria from Sanofi. DJG reports consulting or advisory role from Bayer, Exelixis, Pfizer, Sanofi, Astellas Pharma, BMS, Genentech, Janssen, Merck Sharp & Dohme, Myovant Sciences, AstraZeneca, Michael J Hennessy Associates, Propella Therapeutics (formerly Vizuri), Constellation Pharmaceuticals, Flatiron, Modra Pharmaceuticals, Physician Education Resource, and RevHealth; leadership from Capio Biosciences; speakers bureau from Sanofi, Bayer, and Exelixis; travel, accommodations, expenses from Bayer, Exelixis, Sanofi, UroToday; honoraria from Sanofi, Bayer, Exelixis, EMD Serono, OncLive, Pfizer, UroToday, American Association for Cancer Research, Access Oncology, Janssen Oncology, Millennium Medical Publication, Ipsen, and UroGPO; and research funding (all institution) from Exelixis, Janssen Oncology, Novartis, Pfizer, Astellas Pharma, BMS, Calithera Biosciences, AstraZeneca, and Sanofi/Aventis. TH reports employment from Texas Oncology; consulting or advisory role from Bayer/Onyx, Pfizer, Novartis, Astellas Pharma, Johnson & Johnson, BMS, Eisai, and Exelixis; speakers bureau from Pfizer, Johnson & Johnson, Eisai, Exelixis, Astella Pharma, and BMS; honoraria from Pfizer, Astellas Pharma, BMS, Exelixis, Eisai, Novartis, Johnson & Johnson, and Bayer/Onyx; and research funding (all institution) from Pfizer, Johnson & Johnson, Exelixis, Eisai, and BMS. JZ reports employment and stock ownership from BMS. JZo reports employment and consulting or advisory role from Syneos Health. JLJ reports employment and stock ownership from BMS. ARK reports remuneration for a consulting or advisory role from Exelixis, AstraZeneca, Bayer, Pfizer, Novartis, Genentech, BMS, and EMD Serono; speakers bureau from Janssen, Astellas Medivation, Pfizer, Novartis, Sanofi, Genentech/Roche, Eisai, AstraZeneca, BMS, Amgen, Exelixis, EMD Serono, Merck, Seattle Genetics/Astellas, Gilead, and Myovant; travel, accommodations and expenses from Genentech, Prometheus, Astellas Medivation, Janssen, Eisai, Bayer, Pfizer, Novartis, Exelixis, and AstraZeneca; stock ownership from ECOM Medical; and research funding (all institution) from Genentech, Exelixis, Janssen, AstraZeneca, Bayer, BMS, Eisai, MacroGenics, Astellas Pharma, BeyondSpring Pharmaceuticals, BioClin Therapeutics, Clovis Oncology, Bavarian Nordic, Seattle Genetics, Immunomedics, and Epizyme.

**Patient consent for publication** Not applicable.

**Ethics approval** CheckMate 920 was approved by the institutional review board or independent ethics committee at each site and conducted in accordance with Good Clinical Practice guidelines as defined by the International Conference on Harmonisation. Written informed consent forms, based on the ethical principles of the Declaration of Helsinki, were completed by all patients.

**Provenance and peer review** Not commissioned; externally peer reviewed.

**Data availability statement** Data are available on reasonable request. Bristol Myers Squibb's policy on data sharing may be found at <https://www.bms.com/researchers-and-partners/independent-research/data-sharing-request-process.html>

**Supplemental material** This content has been supplied by the author(s). It has not been vetted by BMJ Publishing Group Limited (BMJ) and may not have been peer-reviewed. Any opinions or recommendations discussed are solely those of the author(s) and are not endorsed by BMJ. BMJ disclaims all liability and responsibility arising from any reliance placed on the content. Where the content includes any translated material, BMJ does not warrant the accuracy and reliability of the translations (including but not limited to local regulations, clinical guidelines, terminology, drug names and drug dosages), and is not responsible for any error and/or omissions arising from translation and adaptation or otherwise.

**Open access** This is an open access article distributed in accordance with the Creative Commons Attribution Non Commercial (CC BY-NC 4.0) license, which permits others to distribute, remix, adapt, build upon this work non-commercially, and license their derivative works on different terms, provided the original work is

properly cited, appropriate credit is given, any changes made indicated, and the use is non-commercial. See <http://creativecommons.org/licenses/by-nc/4.0/>.

#### ORCID iDs

Scott S Tykodi <http://orcid.org/0000-0002-0399-0965>

Daniel J George <http://orcid.org/0000-0002-0836-8542>

#### REFERENCES

- Lipworth L, Morgans AK, Edwards TL, *et al*. Renal cell cancer histological subtype distribution differs by race and sex. *BJU Int* 2016;117:260–5.
- Leibovich BC, Lohse CM, Crispen PL, *et al*. Histological subtype is an independent predictor of outcome for patients with renal cell carcinoma. *J Urol* 2010;183:1309–16.
- Moch H, Gasser T, Amin MB, *et al*. Prognostic utility of the recently recommended histologic classification and revised TNM staging system of renal cell carcinoma: a Swiss experience with 588 tumors. *Cancer* 2000;89:604–14.
- Moch H, Cubilla AL, Humphrey PA, *et al*. The 2016 WHO classification of tumours of the urinary system and male genital organs-part a: renal, penile, and testicular tumours. *Eur Urol* 2016;70:93–105.
- Ahrens M, Scheich S, Hartmann A, *et al*. Non-clear cell renal cell carcinoma - pathology and treatment options. *Oncol Res Treat* 2019;42:128–35.
- Gulati S, Philip E, Salgia S, *et al*. Evolving treatment paradigm in metastatic non clear cell renal cell carcinoma. *Cancer Treat Res Commun* 2020;23:100172.
- Vera-Badillo FE, Templeton AJ, Duran I, *et al*. Systemic therapy for non-clear cell renal cell carcinomas: a systematic review and meta-analysis. *Eur Urol* 2015;67:740–9.
- National Comprehensive Cancer Network. Kidney cancer version 3, 2022. Available: [https://www.nccn.org/professionals/physician\\_gls/pdf/kidney.pdf](https://www.nccn.org/professionals/physician_gls/pdf/kidney.pdf) [Accessed 5 Nov 2021].
- Kroeger N, Xie W, Lee J-L, *et al*. Metastatic non-clear cell renal cell carcinoma treated with targeted therapy agents: characterization of survival outcome and application of the International mRCC database consortium criteria. *Cancer* 2013;119:2999–3006.
- Hutson TE, Michaelson MD, Kuzel TM, *et al*. A single-arm, multicenter, phase 2 study of lenvatinib plus everolimus in patients with advanced non-clear cell renal cell carcinoma. *Eur Urol* 2021;80:162–70.
- Vogelzang NJ, Olsen MR, McFarlane JJ, *et al*. Safety and efficacy of nivolumab in patients with advanced non-clear cell renal cell carcinoma: results from the phase IIIb/IV CheckMate 374 study. *Clin Genitourin Cancer* 2020;18:461–8.
- Koshkin VS, Barata PC, Zhang T, *et al*. Clinical activity of nivolumab in patients with non-clear cell renal cell carcinoma. *J Immunother Cancer* 2018;6:9.
- McDermott DF, Lee J-L, Ziobro M, *et al*. Open-label, single-arm, phase II study of pembrolizumab monotherapy as first-line therapy in patients with advanced non-clear cell renal cell carcinoma. *J Clin Oncol* 2021;39:1029–39.
- McGregor BA, McKay RR, Braun DA, *et al*. Results of a multicenter phase II study of atezolizumab and bevacizumab for patients with metastatic renal cell carcinoma with variant histology and/or sarcomatoid features. *J Clin Oncol* 2020;38:63–70.
- Powles T, Larkin JMG, Patel P, *et al*. A phase II study investigating the safety and efficacy of savolitinib and durvalumab in metastatic papillary renal cancer (CALYPSO). *J Clin Oncol* 2019;37:545.
- Motzer RJ, Tannir NM, McDermott DF, *et al*. Nivolumab plus ipilimumab versus sunitinib in advanced renal-cell carcinoma. *N Engl J Med* 2018;378:1277–90.
- Motzer RJ, Rini BI, McDermott DF, *et al*. Nivolumab plus ipilimumab versus sunitinib in first-line treatment for advanced renal cell carcinoma: extended follow-up of efficacy and safety results from a randomised, controlled, phase 3 trial. *Lancet Oncol* 2019;20:1370–85.
- Albiges L, Tannir NM, Burotto M, *et al*. Nivolumab plus ipilimumab versus sunitinib for first-line treatment of advanced renal cell carcinoma: extended 4-year follow-up of the phase III CheckMate 214 trial. *ESMO Open* 2020;5:e001079.
- OPDIVO (nivolumab) [package insert]. Bristol Myers Squibb, Princeton, NJ 2021.
- European Medicines Agency. OPDIVO, summary of product characteristics. Available: [https://www.ema.europa.eu/en/documents/product-information/opdivo-epar-product-information\\_en.pdf](https://www.ema.europa.eu/en/documents/product-information/opdivo-epar-product-information_en.pdf) [Accessed 27 Jul 2021].



- 21 McKay RR, Bossé D, Xie W, *et al.* The clinical activity of PD-1/PD-L1 inhibitors in metastatic non-clear cell renal cell carcinoma. *Cancer Immunol Res* 2018;6:758–65.
- 22 Gupta R, Ornstein MC, Li H, *et al.* Clinical activity of ipilimumab plus nivolumab in patients with metastatic non-clear cell renal cell carcinoma. *Clin Genitourin Cancer* 2020;18:429–35.
- 23 Emamekhoo H, Olsen MR, Carthon BC, *et al.* Safety and efficacy of nivolumab plus ipilimumab in patients with advanced renal cell carcinoma with brain metastases: CheckMate 920. *Cancer* 2021 doi:10.1002/cncr.34016
- 24 Clopper CJ, Pearson ES. The use of confidence or fiducial limits illustrated in the case of the binomial. *Biometrika* 1934;26:404–13.
- 25 Brookmeyer R, Crowley J. A confidence interval for the median survival time. *Biometrics* 1982;38:29–41.
- 26 Kaplan EL, Meier P. Nonparametric estimation from incomplete observations. *J Am Stat Assoc* 1958;53:457–81.
- 27 Escudier B, Tannir NM, McDermott DF, *et al.* CheckMate 214: efficacy and safety of nivolumab + ipilimumab (N+I) V sunitinib (S) for treatment-naïve advanced or metastatic renal cell carcinoma (mRCC), including IMDC risk and PD-L1 expression subgroups. *Annals of Oncology* 2017;28:v621–2.
- 28 Buonerba C, Dolce P, Iaccarino S, *et al.* Outcomes associated with first-line anti-PD-1/ PD-L1 agents vs. sunitinib in patients with sarcomatoid renal cell carcinoma: a systematic review and meta-analysis. *Cancers* 2020;12 doi:10.3390/cancers12020408
- 29 Armstrong AJ, Halabi S, Eisen T, *et al.* Everolimus versus sunitinib for patients with metastatic non-clear cell renal cell carcinoma (ASPEN): a multicentre, open-label, randomised phase 2 trial. *Lancet Oncol* 2016;17:378–88.
- 30 Tannir NM, Jonasch E, Albiges L, *et al.* Everolimus versus sunitinib prospective evaluation in metastatic non-clear cell renal cell carcinoma (ESPN): a randomized multicenter phase 2 trial. *Eur Urol* 2016;69:866–74.
- 31 Martín A, Puente J, Pinto A, *et al.* Real-world outcome of 173 metastatic non-clear cell renal cell carcinoma (nccRCC) cases: the experience of the center group for genitourinary tumors. *Kidney Cancer* 2019;3:41–50.
- 32 Chahoud J, Msaouel P, Campbell MT, *et al.* Nivolumab for the treatment of patients with metastatic non-clear cell renal cell carcinoma (nccRCC): a single-institutional experience and literature meta-analysis. *Oncologist* 2020;25:252–8.
- 33 Tannir NM, Arén Frontera O, Hammers HJ, *et al.* Thirty-month follow-up of the phase III CheckMate 214 trial of first-line nivolumab + ipilimumab (N+I) or sunitinib (S) in patients (pts) with advanced renal cell carcinoma (aRCC). *J Clin Oncol* 2019;37:547.
- 34 Pal SK, Tangen C, Thompson IM, *et al.* A comparison of sunitinib with cabozantinib, crizotinib, and savolitinib for treatment of advanced papillary renal cell carcinoma: a randomised, open-label, phase 2 trial. *Lancet* 2021;397:695–703.