

## Saliva diagnostics – Current views and directions

Karolina Elzbieta Kaczor-Urbanowicz<sup>1</sup>, Carmen Martin Carreras-Presas<sup>2</sup>, Katri Aro<sup>1</sup>, Michael Tu<sup>1</sup>, Franklin Garcia-Godoy<sup>3</sup> and David TW Wong<sup>1</sup>

<sup>1</sup>School of Dentistry, Center for Oral/Head & Neck Oncology Research, University of California at Los Angeles, Los Angeles, CA 90095, USA; <sup>2</sup>Universidad Europea de Madrid, Adult's Dentistry Department, Faculty of Biomedical Sciences, Madrid 28670, Spain; <sup>3</sup>College of Dentistry, University of Tennessee Health Science Center, Bioscience Research Center, Memphis, TN 38163, USA  
Corresponding author: Franklin Garcia-Godoy. Email: fgarciagodoy@gmail.com

### Impact statement

The purpose of this mini-review is to make an update about the present and future applications of saliva as a diagnostic biofluid in many fields of science such as dentistry, medicine and pharmacotherapy. Using saliva as a fluid for diagnostic purposes would be a huge breakthrough for both patients and healthcare providers since saliva collection is easy, non-invasive and inexpensive. We will go through the current main diagnostic applications of saliva, and provide a highlight on the emerging, newly developing technologies and tools for cancer screening, detection and monitoring.

### Abstract

In this review, we provide an update on the current and future applications of saliva for diagnostic purposes. There are many advantages of using saliva as a biofluid. Its collection is fast, easy, inexpensive, and non-invasive. In addition, saliva, as a “mirror of the body,” can reflect the physiological and pathological state of the body. Therefore, it serves as a diagnostic and monitoring tool in many fields of science such as medicine, dentistry, and pharmacotherapy. Introduced in 2008, the term “Salivaomics” aimed to highlight the rapid development of knowledge about various “omics” constituents of saliva, including: proteome, transcriptome, micro-RNA, metabolome, and microbiome. In the last few years, researchers have developed new technologies and validated a wide range of salivary biomarkers that will soon make the use of saliva a clinical reality. However, a great need still exists for convenient and accurate point-of-care devices that can serve as a non-invasive diagnostic tool. In addition, there is an

urgent need to decipher the scientific rationale and mechanisms that convey systemic diseases to saliva. Another promising technology called liquid biopsy enables detection of circulating tumor cells (CTCs) and fragments of tumor DNA in saliva, thus enabling non-invasive early detection of various cancers. The newly developed technology—electric field-induced release and measurement (EFIRM) provides near perfect detection of actionable mutations in lung cancer patients. These recent advances widened the salivary diagnostic approach from the oral cavity to the whole physiological system, and thus point towards a promising future of salivary diagnostics for personalized individual medicine applications including clinical decisions and post-treatment outcome predictions.

**Keywords:** Saliva, diagnostics, transcriptomics, point-of-care, liquid biopsy, biomarkers

*Experimental Biology and Medicine* 2017; 242: 459–472. DOI: 10.1177/1535370216681550

### Introduction

Saliva (whole saliva [WS], oral fluids [OFs]) is an acidic (pH=6–7) biological fluid composed of secretions from the three major salivary glands (parotid, submandibular, sublingual) and from minor glands (i.e. labial, buccal, lingual, and palatal tissues), gingival crevicular fluid, cell debris, plaque, bacteria, nasal and bronchial secretions, lining cells, blood and exogenous substances.<sup>1,2</sup> It contains 99% water, 0.3% proteins and both 0.2% inorganic and organic substances.<sup>3</sup> The most prevalent inorganic components include: sodium, potassium, calcium, magnesium, chloride, and carbonates, while the organic components comprise amylases, peroxidase, lipase, mucins, lysozyme,

lactoferrins, kallikreins, cystatins, hormones, and growth factors.<sup>4</sup> In a healthy individual, the daily salivary secretion is estimated to be between 0.5 and 1.5 L.<sup>5</sup>

Saliva plays an important role in many biological functions such as perception of oral sensations (i.e. taste, temperature and touch), lubrication, chewing, swallowing, and digestion. In addition, it enhances remineralization of tooth enamel and prevents demineralization due to its buffering capacity.<sup>6,7</sup>

Saliva also protects oral mucosa against biological, mechanical, and chemical factors, as well as against bacterial, viral, and fungal infections, thus maintaining the oral cavity ecosystem remain in balance.<sup>8,9</sup>

There are many advantages of using saliva as a biofluid. Its collection is fast, easy, inexpensive, and non-invasive.<sup>10</sup> It is suitable for home use (without the need for medical personal) as well as for epidemiological researches. It is easy to store and ship, does not clot, and can reflect the current physiological state of an individual.<sup>1,11</sup> Since there is no need for using needles for sample collection, it is not only more comfortable for patients, since anxiety levels are reduced. Saliva is also beneficial for healthcare providers, as the risk for percutaneous injury and self-contamination is avoided. Saliva, as a "mirror of the body," can thus reflect the physiological and pathological state of the body.<sup>2</sup>

In the last few decades, one of the disadvantages of using saliva as a diagnostic tool was the lack of suitable cost-effective technology.<sup>12</sup> However, recent publications show that this obstacle will soon be removed. Segal and Wong<sup>13</sup> and Wong<sup>14</sup> reported that a biological fluid such as saliva could be used as a diagnostic tool for monitoring a disease if it meets the criteria of being easily and non-invasively collected, possesses validated and definitive biomarkers for a specific disease, and is capable of having its biomarkers detected on existing technologies.<sup>13,14</sup>

In this review, we will present an update on the current approaches of salivary diagnostics, including the discovery of salivary biomarkers for the diagnosis of various human pathological conditions.

## Areas of diagnostic application of saliva

Saliva reflects both local and general health of the human body, and thus it has the potential to be used for the detection of essential biomarkers for both oral and systemic diseases.<sup>1,10</sup>

There are many major areas where salivary diagnostics can be applied, including the fields of medicine, dentistry, pharmacotherapy, epidemiology, and bioterrorism (Figure 1).

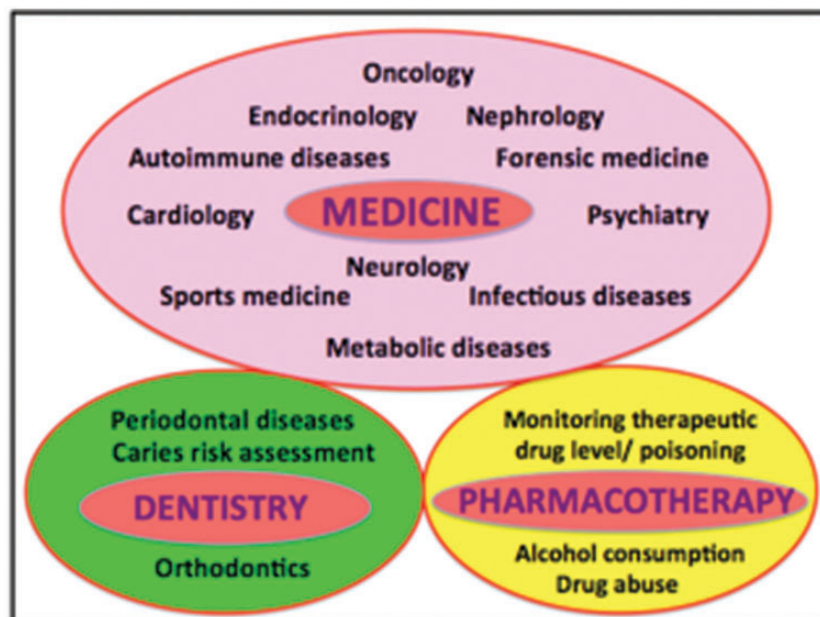
### Medicine

For a better comprehension of some of the main applications of salivary biomarkers in current and prospective medicine, we have subdivided them into several categories according to specific medical specialties:

**Oncology.** Oncology is a branch of medicine that deals with the prevention, diagnosis, and treatment of cancer. Saliva serves as a useful diagnostic mean in the early detection of various cancers such as oral cancer, pancreatic cancer, breast cancer, lung cancer, or gastric cancer. Anti-p53 antibodies are known tumor markers for esophageal cancer, stomach cancer, and cancer of the large intestine as well as for oral squamous cell carcinoma (OSCC).<sup>15</sup> CA-125 is used as a marker for ovarian, endometrial, lung, breast, and gastrointestinal cancers.<sup>16</sup> CA 15-3 and c-erbB-2 are used in diagnostics of breast cancer,<sup>17</sup> while overexpression of EGFR receptor is observed in pancreatic cancer.<sup>18</sup>

### Oral cancer

The use of salivary biomarkers for early detection of oral cancer, for which the five-year survival rate is still very low (62%), has recently attracted much interest in research studies.<sup>19</sup> More than 90% of oral cancers are OSCC and most OSCCs are diagnosed at an advanced stage, thus pointing out the need for clinical diagnostic aids for early detection of OSCC (Figure 2).



**Figure 1** Major areas of salivary diagnostics. (A color version of this figure is available in the online journal.)

Currently, more than 100 OSCC biomarkers of various types have been reported in the literature and various technologies were used for their discovery<sup>20</sup> (Table 1).

Three tumor markers (Cyfra 21-1, tissue polypeptide antigen [TPA] and cancer antigen CA-125) are significantly increased in saliva of patients diagnosed with OSCC.<sup>11,24</sup> Specifically, Cyfra-21-1 was found to be elevated in patients with potentially malignant and malignant disorders of the oral cavity.<sup>37</sup> Shpitzer *et al.*<sup>38</sup> reported that cyclin D1 and Ki-67 were increased in correlation with tumor proliferation and the presence of metastasis, thus indicating a poor prognosis for oral cancer patients.

Also, higher levels of MMP-2, MMP-9, and TNF $\alpha$  were observed in oral cancer patients compared to control subjects.<sup>38,39</sup>



**Figure 2** Oral squamous cell carcinoma in the right buccal mucosa of a 50-year-old female patient. Since the lesion was asymptomatic, the patient did not seek for medical consultation earlier and the cancer was diagnosed during a regular check-up appointment. Early diagnosis is preferable due to tendency of the tumor to spread. (A color version of this figure is available in the online journal.)

In addition, our group identified five proteins such as M2BP, MRP14, profilin, CD59, and catalase that were able to discriminate oral cancer with greater than 90% clinical accuracy (sensitivity of 90% and specificity of 83%).<sup>26</sup>

We also developed salivary RNA biomarkers for OSCC by means of microarray analysis including transcripts of IL8, IL-1 $\beta$ , DUSP1, HA3, OAZ1, S100P, and SAT with 91% sensitivity and 91% specificity.<sup>31</sup> Similarly, Brinkmann *et al.*<sup>40</sup> and Elashoff *et al.*<sup>41</sup> have recently confirmed that DUSP1, IL-1 $\beta$ , and IL-8 are increased in OSCC.

Furthermore, changes in valine, lactic acid, and phenylalanine yielded high sensitivity (90%) and specificity (83%) with positive predictive value (85%) between healthy, oral cancer and precancerous conditions in the study performed using ultraperformance LC coupled with quadrupole/TOF-MS and multivariate statistical analysis.<sup>33</sup> Similarly, recently a study was carried out using hydrophilic interaction chromatography-ultraperformance LC-MS analysis reports significant differences in the concentration of choline, betaine, pipercolinic acid (high in OSCC), and L-carnitine (low in OSCC).<sup>34</sup> Finally, the use of a novel system in which reversed phase liquid and hydrophilic interaction chromatography were combined with TOF-MS resulted in the discovery of five new metabolic markers for OSCC, such as propionylcholine, N-acetyl-L-phenylalanine, sphinganine, phytosphingosine, and S-carboxymethyl-L-cysteine.<sup>34</sup>

### Pancreatic cancer

Pancreatic cancer affects ~44,030 individuals and ~37,660 succumb to the disease annually in the United States.<sup>19</sup> The five-year survival for pancreatic cancer is worst of all human cancers. Our laboratory demonstrated the development of validated salivary extracellular RNA (exRNA) biomarkers for the detection of early resectable pancreatic

**Table 1** Types of salivary biomarkers used in the diagnosis of OSCC and the technology used for their discovery

Type of biomarkers (OSCC)	Technology behind
Non-organic compound biomarkers	Identified by flame photometry, atomic absorption, and spectrophotometry <sup>21</sup>
Peptide or protein biomarkers	High-performance liquid chromatography (HPLC) <sup>22</sup> Enzyme-linked immunosorbent assay (ELISA) <sup>23</sup> Radio-immunoassay <sup>24</sup> Two-dimensional gel electrophoresis (2DE) followed by mass spectrometry (MS) <sup>25</sup> 2DE and reverse-phase liquid chromatography (LC) followed by LC-tandem MS <sup>26</sup> Matrix-assisted laser desorption/ionization time-of-flight mass spectrometry (MALDI-TOF MS) <sup>27</sup> 2DE followed by MALDI-TOF MS <sup>28</sup>
DNA, mRNA or microRNA biomarkers	Polymerase chain reaction (PCR) <sup>29</sup> Quantitative PCR (qPCR) <sup>30</sup> Microarrays followed by qPCR <sup>31</sup>
Metabolomic biomarkers	Capillary electrophoresis TOF MS <sup>32</sup> HPLC with quadrupole/TOF MS <sup>33</sup> Hydrophilic interaction chromatography-ultraperformance LC-MS analysis <sup>34</sup> Reversed phase liquid and hydrophilic interaction chromatography/TOF-MS <sup>34</sup>
Miscellaneous biomarkers (chemical and enzyme activity)	HPLC <sup>35</sup> Colorimetric (mostly commercially available) assays <sup>36</sup>



cancer. The logistic regression model with the combination of four messenger RNA biomarkers (KRAS, MBD3L2, ACRV1 and DPM1) could differentiate pancreatic cancer patients from non-cancer subjects with 90.0% sensitivity and 95.0% specificity (ROC=0.971).<sup>42</sup>

Recently, Humeau *et al.*<sup>43</sup> explored that salivary micro-RNA (miRNA) are discriminatory in patients with pancreatic tumors that are not eligible for surgery compared to patients diagnosed with precancerous lesions, inflammatory disease, or cancer-free control subjects.

### Gastric cancer

Gastric cancer is the fourth most common cancer and the second leading cause of cancer-related death worldwide.<sup>44</sup> Approximately 880,000 people succumb to this malignancy each year. Such high mortality is mainly due to the delayed diagnosis, since early gastric cancers are typically asymptomatic or cause only nonspecific symptoms.<sup>45</sup> Three salivary proteins have been linked to gastric cancer: cystatin B (CSTB), triosephosphate isomerase (TPI1) and deleted in malignant brain tumors 1 protein (DMBT1). These markers could be used to differentiate gastric cancer patients from control subjects ( $p < 0.05$ ) with 85% sensitivity and 80% specificity.<sup>46</sup>

### Future perspectives

Despite the scientific acceptance of salivary biomarkers for the detection of human diseases, the absence of a mechanistic rationale in regards to the communication between the distal tumor and the oral cavity undermines saliva's scientific credibility for clinical utility. Currently, tumor-derived microvesicles (exosomes) are of high interest to researchers, as they might be the key to understanding the communication between cancer and the oral cavity, leading to the development of tumor-specific salivary biomarkers.<sup>47</sup> Using a rodent pancreatic cancer model, we have demonstrated that tumor-specific mRNA markers are shed from the pancreatic tumor cells, packaged in exosome and shuttled to salivary gland.<sup>48</sup>

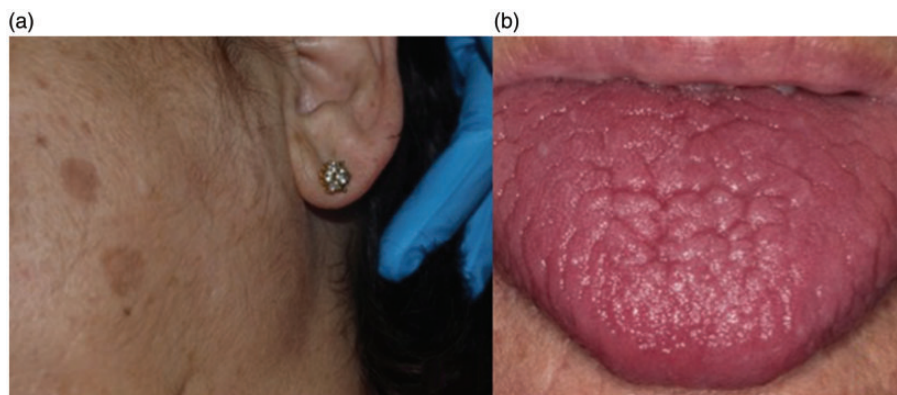
**Infectious bacterial diseases.** *Helicobacter pylori* (*H. pylori*) is a Gram-negative, microaerophilic bacterial pathogen that usually grows in the stomach mucus. *H. pylori* infection is the strongest risk factor for developing gastric and duodenal ulcers, the most common disease of the digestive system<sup>49</sup> and has been classified as type I carcinogen by the World Health Organization (WHO) due to its known involvement in the development of gastric MALT lymphoma. In the stomach, it can be diagnosed by means of endoscopy and the urea breath test.<sup>50</sup> However, this test should be avoided for diagnosing oral *H. pylori* infection, since in the oral cavity there are many *Campylobacter*-like and *Streptococcus* bacteria with the urease-positive capability, which may contribute to false positive results.<sup>51</sup> Because of these false positives, the detection of *H. pylori* in the saliva is more effectively detected by means of polymerase chain reaction (PCR).<sup>52,53</sup>

**Infectious viral diseases.** Numerous viruses including hepatitis A, B, and C viruses,<sup>54–57</sup> cytomegalovirus,<sup>58,59</sup> Epstein Barr virus,<sup>60</sup> virus herpes (1,2,6,7,8)<sup>61</sup> and recently Zika virus<sup>62</sup> can be isolated from the saliva. Moreover, measuring the level of salivary antibodies enables detection of Morbillivirus infection causing measles (with 97% sensitivity and 100% specificity),<sup>63</sup> Paramyxoviridae causing mumps (94% sensitivity and 94% specificity), or Togaviridae causing rubella (98% sensitivity and 98% specificity).<sup>64,65</sup>

**Infectious fungal diseases.** Some fungal local infections, like candidiasis, have been already diagnosed in saliva.<sup>66</sup>

**Autoimmune diseases.** Salivary diagnostics is a common tool in detection of autoimmune diseases such as Sjögren's syndrome, celiac disease, and cystic fibrosis.

Sjögren's syndrome (SS) is an autoimmune disease of salivary and tear glands (Figure 3). It is characterized by increased levels of salivary interleukins such as IL-2 and IL-6 reduction in stimulated and unstimulated salivary flow and an increase in the concentration of IgA, IgG, IgM, Na, lactoferrin, albumin,  $\beta$ 2 microglobulin, cystatin S and C, lipid, prostaglandin E2, and thromboxane B2.<sup>67,68</sup> In



**Figure 3** 55-year-old female patient with xerostomia, xerophthalmia, and non-tumoral, non-inflammatory bilateral enlargement of the parotid gland diagnosed as Sjögren's syndrome. (A color version of this figure is available in the online journal.)

this line, Streckfus *et al.*<sup>69</sup> analyzed WS in patients with primary and secondary Sjögren's syndrome and those treated with interferon. Their results were consistent with the current literature and confirmed that healthy individuals have lower levels of IL-2 and IL-6 than the affected subjects. In addition, the authors stated that the application of topical interferon may increase the rate of salivary secretion and decrease the presence of these cytokines in saliva.

In 2007, our group identified a panel of protein and mRNA biomarkers in saliva for the detection of primary Sjögren Syndrome (pSS).<sup>70</sup> In the later study by Hu *et al.*, three protein biomarkers (cathepsin D [CPD],  $\alpha$ -enolase, and  $\beta_2$ -microglobulin [ $\beta_2m$ ]) and three mRNA biomarkers (myeloid cell nuclear differentiation antigen [MNDA], guanylate binding protein 2 [GBP-2], and low-affinity IIIb receptor for the Fc fragment of IgG) were significantly elevated in patients with primary SS compared with both systemic lupus erythematosus (SLE) patients and healthy controls. The combination of three protein biomarkers (CPD,  $\alpha$ -enolase and  $\beta_2m$ ) yielded a receiver operating characteristic (ROC) value of 0.99 in distinguishing primary SS from healthy controls. The combination of protein biomarker  $\beta_2m$  and 2 mRNA biomarkers, MNDA, and GBP-2, reached a ROC of 0.95 in discriminating primary SS from SLE.<sup>71</sup> We have also discovered salivary autoantibody biomarkers for primary SS using a protein microarray approach that reflects damaged glandular cells and an activated immune response. These results have the potential to lead to the development of a low-cost clinical tool for simple, non-invasive detection of pSS.<sup>72</sup>

In celiac disease, the ingestion of gluten leads to the damage of salivary anti-gliadin antibodies in the small intestine of genetically predisposed patients.<sup>73,74</sup> Bonamico *et al.*<sup>75</sup> demonstrated the presence of IgA and anti-tissue transglutaminase (tTG) in saliva of children diagnosed with celiac disease, while Dane *et al.*<sup>76</sup> reported about decreased salivary flow rate and buffering capacity compared to non-celiac controls.

Cystic fibrosis patients showed increased levels of prostaglandin PGE2 and decreased activity of protease and EGF in saliva.<sup>77-79</sup>

**Endocrinology.** In endocrinology, saliva has proven to be a useful diagnostic tool in measuring the concentration of unconjugated steroid hormones and melatonin, even substituting other biological fluids used until now (such as plasma, serum, and urine).<sup>80</sup> Currently, salivary diagnostics allow for monitoring of the cycle of hormonal secretions, endocrine functions using dynamic tests (Dexamethasone), controlling the concentration and metabolism of hormones used as drugs (hormone replacement therapy) and determining the free fraction of many hormones. The consolidation of these techniques could significantly reduce the costs of expensive hormonal endocrine studies.<sup>81,82</sup>

Thus, saliva is used to monitor the levels of aldosterone,<sup>83</sup> parathyroid hormone,<sup>84</sup> glucose,<sup>85</sup> and insulin.<sup>86,87</sup>

In addition, the levels of dehydroepiandrosterone are measured in the diagnosis of hirsutism, adrenal tumors, and adrenal genital syndrome,<sup>88,89</sup> progesterone in

diagnosis of menstruation disorders or infertility,<sup>90</sup> estriol in diagnosis of fetal maturation,<sup>91</sup> or cortisol in diagnosis of Cushing's syndrome.<sup>92-94</sup> Saliva is also used for determining of levels of estradiol and testosterone in the diagnosis of hirsutism, menstrual disorders, adrenal and testicular tumors, steroidogenesis disorders, and for control of anti-androgenic therapy outcomes.<sup>95</sup> Taking into consideration that testosterone in saliva is free and unbound with proteins (sex-hormone-binding globulins [SHBGs]), the superiority of its determination is unquestionable compared to other biofluids.<sup>96,97</sup>

**Psychiatry.** Several authors have demonstrated the changes in hormones such as cortisol and alpha-amylase in anxiety disorders.<sup>98-102</sup> For instance, Richter *et al.*<sup>103</sup> studied salivary cortisol levels in a population of pregnant women with anxiety disorder.<sup>103</sup> In this line, Rai *et al.*<sup>104</sup> conducted a study on periodontal patients with depression. Also, a wide range of stressors have been already explored in occupational and environmental medicine.<sup>105</sup> Recently, measurements of testosterone are widely used in assessing the degree of aggression, depression, violence, and anti-social behavior in psychiatry.<sup>106,107</sup>

**Nephrology.** Currently, the levels of salivary creatinine in saliva can be determined in order to monitor renal functions, and to ascertain the efficacy of dialysis in patients with end-stage terminal renal disease.<sup>108,109</sup>

Venkatapathy *et al.*<sup>110</sup> studied the correlation between serum and salivary creatinine in chronic renal failure patients. Their results showed that creatinine was higher both in serum and saliva of diseased patients. With a cut-off value of 0.2mg/dL, a sensitivity of 97.1% and specificity of 86% was reported.

**Cardiology.** Salivary diagnostics also plays an important role in cardiology, i.e. in risk assessment for cardiovascular diseases in people with insulin resistance<sup>111,112</sup> or for acute myocardial infarction.<sup>113</sup> Thus, salivary alpha-amylase was reported as an independent diagnostic factor for acute myocardial infarction in patients suffering from precordial pain less than 4 h.<sup>114</sup> In addition, the use of nano-biochips based on salivary proteins (including C-reactive protein, myoglobin and myeloperoxidase) in patients with acute myocardial infarction was reported to be an effective technique for screening purposes.<sup>115</sup>

In this way, salivary analysis may contribute to a better therapeutic management of acute cardiac events.

**Metabolic diseases.** Salivary biomarkers have been recently explored as a useful screening tool in patients diagnosed with metabolic disorders such as obesity<sup>116</sup> or diabetes mellitus.<sup>86,117-119</sup>

Diabetes mellitus is a metabolic disorder characterized by elevated blood glucose levels and it is one of the most important health problems faced by the humankind today. It leads to morphological changes in the salivary glands and in the composition of saliva. According to Malicka *et al.*,<sup>120</sup>

myeloperoxidase and IgA were correlated with a poor periodontal status in diabetic patients.<sup>120</sup>

In addition, in diabetes mellitus type 2, Aitken-Saavedra *et al.*<sup>121</sup> reported a positive correlation between HbA1 and total amount of proteins, and an indirect correlation between HbA1 and pH in saliva. Since diabetes is a common chronic disease with many associated comorbidities, measuring the qualitative and quantitative salivary alterations could be a promising and cheaper way of monitoring affected patients.

**Neurology.** Salivary diagnostics is also used in some neurodegenerative diseases like Alzheimer's disease, where Shi *et al.*<sup>122</sup> found elevated levels of phosphorylated and total TAU proteins compared to healthy individuals.

In addition, Jang *et al.*<sup>123</sup> observed increased levels of nerve growth factor (NGF) and sensory neuropeptides (including substance P and calcitonin gene-related peptide [CGRP]) strongly correlated with the severity of pain in patients diagnosed with chronic migraine.<sup>123</sup>

**Sports medicine.** Saliva analysis enables to monitor the metabolic response of sportsmen during physical training. Thus, they can avoid overtraining and lessen the risk of injuries. Moreover, they can accordingly modify their plan of training, in terms of duration, frequency, and intensity of exercises. Gatti and de Palo<sup>124</sup> have published a thorough review of the salivary components and their changes in relation to physical workouts. Also, Zauber *et al.*<sup>125</sup> studied changes in protein and metabolite levels in saliva during excessive exercising.

**Forensic medicine.** Saliva is a useful diagnostic tool in forensic sciences, where there is a possibility to differentiate individuals, who are still alive, from dead bodies. Interestingly, due to the fast oral tissue turnover, DNA extracted from the OFs is much more valid compared to other possible DNA sources.<sup>126</sup>

## Dentistry

**Periodontics.** Analysis of saliva may serve as a useful tool in assessment of current periodontal status, monitoring response to treatment and prediction of disease progression. Salivary biomarkers for periodontal diseases include proteins of host origin (i.e. enzymes and immunoglobulins), phenotypic markers, host cells, hormones, bacteria and bacterial products, ions, and volatile compounds.<sup>127</sup> The most common periodontal pathogens implicated in periodontal diseases include *Tanerella forsythensis*, *Porphyromonas gingivalis* and *Treponema denticola*, so called "red complex" of bacteria.<sup>128,129</sup>

Host response and inflammatory mediators in saliva include: IL-1 $\beta$ , IL-6, IL-8, TNF- $\alpha$ , elastase, aspartate, and aminotransferase,<sup>130,131</sup> while bone-specific markers of tissue destruction and connective tissue breakdown comprise: collagen telopeptides, MMP-9, osteocalcin, proteoglycans, or fibronectin.<sup>12,132,133</sup>

In addition, metabolic profiling of saliva can provide a global outlook of the changes associated with periodontal

diseases, particularly host enzymes (alkaline phosphatase, esterase, glucuronidase and aminopeptidase), prostaglandin E2, matrix metalloproteinase-8, 8-hydroxy-deoxyguanosine, dipeptides (leucylisoleucine, phenylphenol and serylisoleucine), as well as the fatty acids (arachidonate, arachidate and dihomolinolate).<sup>11,134-139</sup>

**Caries risk assessment.** The use of salivary diagnostics for caries risk assessment includes microbiome, proteomic, genomic, and transcriptomic approaches. The most common human dental caries-associated pathogens are *Streptococcus mutans* (*S. mutans*), *Streptococcus sobrinus* (*S. sobrinus*), and *Lactobacilli*.<sup>140,141</sup> Low salivary levels of alpha-defensins HNP1-3 contribute to caries susceptibility in children,<sup>142</sup> while salivary mucins (i.e. MUC7) promote agglutination of streptococci.<sup>143</sup>

Caries risk assessment can be also managed by means of analyzing host-related factors in saliva including salivary flow rate, salivary pH, and buffer capacity.<sup>141</sup>

Diagnostic tools include culture-based methods such as *Mitis salivarius* bacitracin broth (MSBB),<sup>144</sup> dip-slide methods as well as newly emerging molecular technologies such as checkerboard DNA-DNA hybridization, genomic fingerprinting, 16S rRNA gene cloning and sequencing, T-RFLP and DNA sequencing including analysis of bacterial genome data.<sup>145,146</sup> Also, PCR-based bacterial identification enables measurements of the cariogenic species in saliva.<sup>147</sup>

**Orthodontics.** There are many compelling reasons to use saliva as a diagnostic aid to monitor the risk and the development of root resorption during orthodontic treatment. Nowadays, available methods of clinical evaluation are mostly radiographic. Although an easy and accessible method, they have disadvantages such as limited points of view and radiation exposure.

The composition of saliva may reflect the pathophysiology of many diseases connected with orthodontic treatment. Several studies reported on changes in saliva in patients undergoing orthodontic treatment, including: interleukin-1 $\beta$  and interleukin-1 $\beta$  receptor antagonist,<sup>148</sup> proteoglycans,<sup>149</sup> regulatory subunit of type II (RII) of cyclic AMP-dependent protein kinase (PKA)<sup>150</sup> or anti-HDE sIgA antibodies.<sup>151</sup> The results of salivary analysis could provide the evidence for clinical decisions to minimize the risk and severity of developing root resorption.

## Pharmacotherapy

**Monitoring the therapeutic drug level and poisoning.** Salivary diagnostics plays a crucial role in pharmacotherapy to monitor the therapeutic drug levels, assess treatment outcomes of diseases through the use of medicines, to detect overdose as well as to study the biochemical and physiological effects of drugs such as carbamazepine, cisplatin, diazepam, digoxin, ethosuximide, irinotecan, lithium, metoprolol, paracetamol, phenytoin, primidone, procainamide, quinine, theophylline, or valproic acid.<sup>152,153</sup> Also, cotinine can be monitored in saliva of smoking subjects.<sup>154</sup>



**Drug abuse.** Saliva plays an important role in detection of various drugs in the blood such as amphetamine, cocaine, methadone, phencyclidine, marijuana, or opiates.<sup>155–157</sup>

**Alcohol consumption.** Salivary diagnostics serves as a diagnostic tool in alcohol consumption.<sup>158</sup>

### Five salivary diagnostic toolboxes “omics”

The term “Salivaomics” was introduced in 2008 due to the rapid development of knowledge about various “omics” constituents of saliva. Currently, there are known five major salivary diagnostic components such as proteome, transcriptome, micro-RNA (miRNA), metabolome, and microbiome.<sup>159</sup>

#### Proteomics

The proteomics is the large-scale screening for proteins, their expression, modifications, and interactions by using high-throughput approaches.<sup>160</sup>

In the recent times, a great breakthrough appeared in the field of proteomics. From about 40 proteins identified in the early 80s, nowadays more than 3000 various proteins are detected.<sup>161</sup>

Currently, there are known two principal methods of proteomic analysis: two-dimensional gel electrophoresis (2DE) and mass-spectrometry analysis.<sup>162</sup> 2DE enables separation of proteins in two dimensions according to the isoelectric point (IE) and the molecular weight (MW). The second method – MS enables identification of proteins and their qualitative (qualitative MS) as well as quantitative (quantitative MS) evaluation.<sup>163</sup> Proteins identified by MS can be further analyzed by electrospray ionization (ESI), matrix-assisted laser desorption ionization (MALDI), quadrupole/linear ion trap, time-of-flight (TOF), quadrupole TOF (QTOF), Fourier transform ion cyclotron resonance (FT-ICR), or the Orbitrap. In addition, post-translationally modified proteins (phosphorylated, glycosylated, acetylated or methylated) can be evaluated by means of dendrimer-associated MS/MS, MALDI-MS, or targeted HPLC-ESI-MS/MS.<sup>2</sup>

Proteomic analysis has been hampered by the presence of high-abundance proteins that either mask or reduce separation sensitivity. In saliva, those proteins include mainly alpha-amylase, albumin, and proline rich proteins (75% of the total saliva proteome). Those proteins hamper the detection of low-abundance proteins appearing in different disease conditions and as a result should be removed. There are three major methods of high-abundance protein removal<sup>164</sup>: enzyme-substrate absorption method used for alpha-amylase affinity removal,<sup>165</sup> immunodepletion method, and combinatorial peptide ligand library (CPLL).<sup>166</sup> Proteomic analysis of saliva is commonly used in the diagnostics of oral diseases as well as general health disorders such as oral candidiasis,<sup>167</sup> OSCC,<sup>168</sup> glossodynia,<sup>169</sup> head and neck squamous cell cancer,<sup>170</sup> Sjögren’s syndrome,<sup>171</sup> HIV,<sup>167</sup> autism,<sup>172</sup> fibromyalgia,<sup>173</sup> breast cancer,<sup>174</sup> lung cancer, melanoma,<sup>82</sup> or pancreatic cancer.<sup>26</sup>

#### Transcriptomics

The transcriptome is composed of all gene transcripts present in a cell, and their quantity, for a specific developmental stage or physiological condition. It helps to reveal the functional elements of the genome as well as molecular components of cells and tissues, development, and disease.<sup>175</sup>

The main method for identification of salivary transcriptomic biomarkers is microarray technology that can be validated by means of the quantitative real-time PCR (qPCR). Several salivary exRNAs have been already identified to allow the detection of many various diseases<sup>176</sup> such as oral cancer,<sup>31</sup> Sjögren syndrome,<sup>70</sup> resectable pancreatic cancer,<sup>42</sup> lung cancer,<sup>177</sup> ovarian cancer,<sup>178</sup> and breast cancer.<sup>179</sup> We have recently obtained proof of concept data that salivary biomarkers possess discriminatory power for the detection of pancreatic cancer with high sensitivity (90.0%) and high specificity (95.0%) (area under curve, AUC=0.971)<sup>42</sup> that paves the way for prediction model validation study followed by a pivotal clinical validation.

Currently, a new high-resolution array from Affymetrix, GeneChip Human Transcriptome Array 2.0 (HTA 2.0) is commonly used that includes all transcript isoforms in the human transcriptome with >6 million probes targeting coding transcripts, exon-exon splice junctions, and non-coding transcripts.<sup>180</sup>

Due to the limitations in microarray technology, detecting and quantifying coding transcript isoforms, in addition to non-coding transcripts, has been challenging. As a result, currently, RNA sequencing (RNA-Seq) has been the preferred newly developed method for characterizing the full human transcriptome by means of deep-sequencing technologies. Compared with microarrays, RNA-Seq is analytically more sensitive in terms of detecting moderately and differentially expressed genes and gives sequence information at each nucleotide position of specific gene.<sup>175,181</sup> Therefore, our group is currently working on the development of highly discriminatory and definitively validated salivary exRNA biomarkers for gastric cancer detection by means of RNA Seq analysis.

#### Micro-RNA-Omics

MicroRNAs (miRNAs) are nucleic acids that are encoded by genes but not translated into proteins. They are non-coding RNAs, in which each primary transcript (pri-miRNA) is processed into a short stem-loop structure called a pre-miRNA and finally into functional miRNA. Mature miRNA molecules cause down-regulation of gene expression.<sup>47</sup> They play an important role in cell growth, differentiation, apoptosis, stress and immune response or glucose secretion.<sup>182–184</sup>

#### Metabolomics

Metabolome is the complete set of small molecular metabolites of living tissues including metabolic intermediates such as carbohydrates, lipids, amino acids, nucleic acids, hormones, and other signaling molecules.<sup>159</sup>

Salivary metabolites are important in elucidating the pathways underlying different diseases, thus making it

ideal for the early detection of a wide range of diseases, including oral cancer and periodontal diseases.<sup>11</sup> A systematic study of metabolites is called metabolomics. The major role of metabolomics is to identify novel metabolic biomarkers from cells, tissues, or body fluids by means of high-performance liquid chromatography-mass spectrometry (HPLC-MS) or two-dimensional gas chromatography MS and nuclear magnetic resonance spectroscopy in conjunction with pattern recognition methods. In this way, it will be possible to monitor and discover metabolic changes related to disease onset or therapeutic interventions. Those techniques have been already applied to chronic renal diseases, hepatocellular carcinoma and colorectal cancers<sup>185</sup> as well as to oral cancer and periodontal diseases.<sup>11</sup>

### Microbiomics

New technologies have allowed the scientists to start to unravel the complex interactions between the microorganisms and the human body.<sup>159</sup>

It was reported that salivary microbiome could be used in the detection of early resectable pancreatic cancer by means of microbial profiling (the Human Oral Microbe Identification Microarray), where two microbial markers (*Neisseria elongata* and *Streptococcus mitis*) were successfully developed with 96.4% sensitivity and 82.1% specificity (ROC=0.9).<sup>186</sup> Currently, newer microbiome-based technologies have also become available, such as study of microbial sequences by means of RNA or DNA sequencing.

## Technologies for salivary diagnostics

### Point-of-care diagnostics

Currently, a great need exists for convenient and accurate point-of-care diagnostics that can serve as a non-invasive diagnostic tool.<sup>162,187</sup>

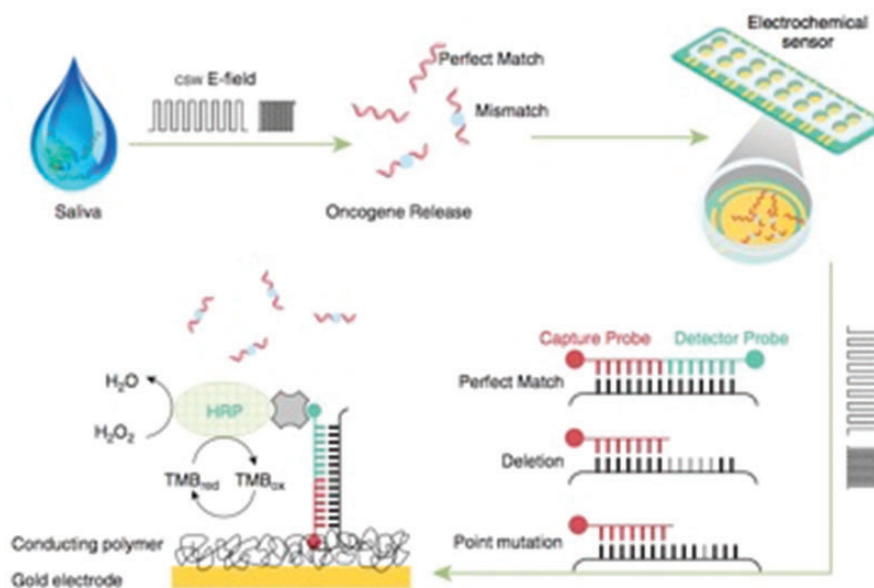
Novel point-of-care salivary technologies are being developed, which can facilitate biomarker identification without any pre-processing, screening, and non-invasive diagnostic testing such as Oral Fluid NanoSensor Test (OFNASET) for oral cancer detection,<sup>188</sup> my PerioPath (OralDNA Labs) for diagnosing of periodontal disease,<sup>159</sup> or the OraRisk HPV test (OralDNA Labs) to detect oral human papillomavirus (HPV) infection that could potentially lead to oral cancer.

There are several currently available or newly emerging technologies based on salivary diagnostics and development of microfluidics or micro/nanoelectromechanical systems (MEMS/NEMS). They are composed of mechanical, electrical, and functional elements such as sensors, actuators, and microelectronics that are made using the techniques of microfabrication. Those technologies enable to measure proteins, DNA, transcripts (mRNA), electrolytes, and small molecules in saliva.<sup>162</sup> Currently developed tools include electrochemical sensing,<sup>189</sup> on-chip qRT-PCR,<sup>190</sup> fiber optic microsphere-based arrays,<sup>191</sup> high-throughput DNA microarrays,<sup>192</sup> surface plasmon resonance-based fiber optic sensors,<sup>193</sup> and microchip-based electrophoretic immunoassay.<sup>137</sup>

The new avenue of point-of-care diagnostics for “lab-on-a-chip” provides a new facet of point-of-care diagnostics, because it concurrently enables the detection of multiple biomarkers, and thus simultaneous diagnosis of many diseases. It seeks to integrate and automate all the complexities of a laboratory procedure into a device of the size of a computer chip.<sup>194</sup>

### Liquid biopsy

Liquid biopsy tests are non-invasive biofluid tests (i.e. serum, urine, saliva) that detect CTCs and fragments of tumor DNA shed into the bloodstream by cells undergoing



**Figure 4** Electric field-induced release and measurement (EFIRM) technology for the detection of epidermal growth factor receptor (EGFR) mutations in bodily fluids of patients with lung cancer. (reproduction from Wei *et al.*<sup>196</sup>). (A color version of this figure is available in the online journal.)



apoptosis or necrosis. The amount of circulating cell-free DNA (cfDNA) corresponds to tumor staging and prognosis. Nowadays, liquid biopsy enables a variety of clinical and investigational applications such as early detection, assessment of molecular heterogeneity of general disease, monitoring of tumor dynamics (in melanoma, breast, ovarian or colon cancers), identification of genetic determinants for targeted therapy, evaluation of early treatment response, monitoring of minimal residual disease, or assessment of resistance evolution in real time.<sup>195</sup>

There are various ways of detection and quantification of ctDNA (circulating tumor DNA) in blood such as Sanger sequencing, pyrosequencing, next generation sequencing, PCR-based technology, HPLC, mutant-enriched liquid chips, amplification refractory mutation system (ARMS), beads, emulsion, amplification and magnetics (BEAMing), or pyrophosphorolysis-activated polymerization (PAP).<sup>195</sup>

However, a new technique was developed at the University of California at Los Angeles (UCLA), School of Dentistry, called EFIRM.<sup>196</sup> This technique enables disrupting and releasing the contents from exosomes and on-site monitoring of the released exosomal RNA/proteins biomarkers for a specific cancer. The first step involves pipetting of a sample of biofluid to the surface of a biosensor and applying a pulsed electric field to release molecular content from the exosome. Biorecognition of these molecules is carried out concurrently through a series of probes on the surface of the biosensor. Following the capture of the molecular targets, a series of reporting molecules are added to the biosensor, thus allowing the amount of a protein, DNA, or RNA target to be measured through electrochemical measurement of the current.<sup>197</sup> This technique allows direct detection in plasma and in saliva of specific mutations present in cancers, i.e. detection of epidermal growth factor receptor (EGFR) mutation in non-small cell lung cancer (NSCLC), thus eliminating the need for quantitative PCR<sup>196</sup> (Figure 4).

The results of performed experiments demonstrate that tumor-shed exosomes can be detected not only in blood, but also in saliva, thus launching a new venue for the non-invasive detection of tumor-specific proteins, micro RNAs, mRNAs, as well as gene mutations in saliva.<sup>197</sup>

## Conclusion

Non-invasiveness is the Holy Grail for early detection of diseases. While saliva diagnostics is widely recognized for human diseases, the absence of discriminatory and definitively validated biomarkers that reached the regulatory FDA approval undermines saliva's clinical utility. However, newly emerging and rapidly developing technologies such as recent point-of-care systems, RNA sequencing or liquid biopsy have the potential to deliver novel diagnostic solutions in the salivary field. These recent advances have broadly widened the salivary diagnostic approach from the oral cavity to the whole physiological system, thus making salivary diagnostics a clinical reality that can be highly accurate and feasibly used to make an assessment of health and disease status. Their outcome will provide clinical and scientific credibility for saliva that might

translate it into improvement of treatment outcomes and advancing prevention in human oral and general diseases.

**Authors' contributions:** KEKU, CMCP, KA, and MT wrote the manuscript, while FGG and DTWW revised, corrected, and supervised the content of the manuscript. All authors read and approved the manuscript prior to submission.

## DECLARATION OF CONFLICTING INTERESTS

David Wong is the co-founder of RNameTRIX Inc., a molecular diagnostic company. He holds equity in RNameTRIX and serves as a company Director and Scientific Advisor. The University of California also holds equity in RNameTRIX. Intellectual property that David Wong invented and which was patented by the University of California has been licensed to RNameTRIX. Additionally, he is a consultant to PeriRx.

None of the other authors have a conflict of interest in relation to this study.

## FUNDING

This work was supported by the Public Health Service (PHS) grants from the National Institute of Health/National Institute of Dental and Craniofacial Research (NIH/NIDCR) in United States: UH3 TR000923, R90 DE022734 and U01 DE17593. The research was also supported from Colgate-Palmolive Company grants (No. 20130399 and No. 20140855) and Delta Dental grants (No. 20143014 and 20164106). DTWW acknowledges the donation from the Stand Up To Cancer.

## REFERENCES

1. Kaufman E LI. The diagnostic applications of saliva. A review. *Crit Rev Oral Biol Med* 2002;197-212
2. Lee YH, Wong DT. Saliva: an emerging biofluid for early detection of diseases. *Am J Dent* 2009;22:241-8
3. Liu J, Duan Y. Saliva: a potential media for disease diagnostics and monitoring. *Oral Oncol* 2012;48:569-77
4. Chiappin S, Antonelli G, Gatti R, De Palo EF. Saliva specimen: a new laboratory tool for diagnostic and basic investigation. *Clin Chim Acta* 2007;383:30-40
5. Mese H, Matsuo R. Salivary secretion, taste and hyposalivation. *J Oral Rehabil* 2007;34:711-23
6. Hicks J, Garcia-Godoy F, Flaitz C. Biological factors in dental caries: role of saliva and dental plaque in the dynamic process of demineralization and remineralization (part 1). *J Clin Pediatr Dent* 2003;28:47-52
7. Garcia-Godoy F, Hicks MJ. Maintaining the integrity of the enamel surface: the role of dental biofilm, saliva and preventive agents in enamel demineralization and remineralization. *J Am Dent Assoc* 2008;139(Suppl 5):25S-34S
8. Amerongen AV, Veerman EC. Saliva - the defender of the oral cavity. *Oral Dis* 2002;8:12-22
9. Jankowska AK, Waszkiel D, Kowalczyk A. Saliva as a main component of oral cavity ecosystem. Part I. Secretion and function. *Wiad Lek* 2007;60:148-54
10. Buczko P, Zalewska A, Szarmach I. Saliva and oxidative stress in oral cavity and in some systemic disorders. *J Physiol Pharmacol* 2015;66:3-9
11. Mikkonen JJ, Singh SP, Herrala M, Lappalainen R, Myllymaa S, Kullaa AM. Salivary metabolomics in the diagnosis of oral cancer and periodontal diseases. *J Periodontol Res* 2016;51:431-7
12. Giannobile WV, McDevitt JT, Niedbala RS, Malamud D. Translational and clinical applications of salivary diagnostics. *Adv Dent Res* 2011;23:375-80

13. Segal A, Wong DT. Salivary diagnostics: enhancing disease detection and making medicine better. *Eur J Dent Educ* 2008;**12**(Suppl 1):22-9
14. Wong DT. Salivary diagnostics: scientific and clinical frontiers. *Adv Dent Res* 2011;**23**:350-2
15. Tavassoli M, Brunel N, Maher R, Johnson NW, Soussi T. P53 Antibodies in the saliva of patients with squamous cell carcinoma of the oral cavity. *Int J Cancer* 1998;**78**:390-1
16. Malathi N, Mythili S, Vasanthi HR. Salivary diagnostics: a brief review. *ISRN Dent* 2014;**2014**:158786
17. Streckfus C, Bigler L, Tucci M, Thigpen JT. A preliminary study of CA15-3, c-erbB-2, epidermal growth factor receptor, cathepsin-D, and p53 in saliva among women with breast carcinoma. *Cancer Invest* 2000;**18**:101-9
18. Dumbrigue HB, Sandow PL, Nguyen KH, Humphreys-Beher MG. Salivary epidermal growth factor levels decrease in patients receiving radiation therapy to the head and neck. *Oral Surg Oral Med Oral Pathol Oral Radiol Endod* 2000;**89**:710-6
19. Siegel R, Naishadham D, Jemal A. Cancer statistics, 2013. *CA Cancer J Clin* 2013;**63**:11-30
20. Cheng YS, Rees T, Wright J. A review of research on salivary biomarkers for oral cancer detection. *Clin Transl Med* 2014: 33-1326-3-3
21. Shpitzer T, Bahar G, Feinmesser R, Nagler RM. A comprehensive salivary analysis for oral cancer diagnosis. *J Cancer Res Clin Oncol* 2007;**133**:613-7
22. Contucci AM, Inzitari R, Agostino S, Vitali A, Fiorita A, Cabras T, Scarano E, Messana I. Statherin levels in saliva of patients with precancerous and cancerous lesions of the oral cavity: a preliminary report. *Oral Dis* 2005;**11**:95-9
23. Vucicevic Boras V, Cikes N, Lukac J, Virag M, Kekic-Arambasin A. Salivary and serum interleukin 6 and basic fibroblast growth factor levels in patients with oral squamous cell carcinoma. *Minerva Stomatol* 2005;**54**:569-73
24. Nagler R, Bahar G, Shpitzer T, Feinmesser R. Concomitant analysis of salivary tumor markers—a new diagnostic tool for oral cancer. *Clin Cancer Res* 2006;**12**:3979-84
25. Jessie K, Jayapalan JJ, Ong KC, Abdul Rahim ZH, Zain RM, Wong KT, Hashim OH. Aberrant proteins in the saliva of patients with oral squamous cell carcinoma. *Electrophoresis* 2013;**34**:2495-502
26. Hu S, Arellano M, Boontheung P, Wang J, Zhou H, Jiang J, Elashoff D, Wei R, Loo JA, Wong DT. Salivary proteomics for oral cancer biomarker discovery. *Clin Cancer Res* 2008;**14**:6246-52
27. Jou YJ, Lin CD, Lai CH, Tang CH, Huang SH, Tsai MH, Chen SY, Kao JY, Lin CW. Salivary zinc finger protein 510 peptide as a novel biomarker for detection of oral squamous cell carcinoma in early stages. *Clin Chim Acta* 2011;**412**:1357-65
28. Jou YJ, Lin CD, Lai CH, Chen CH, Kao JY, Chen SY, Tsai MH, Huang SH, Lin CW. Proteomic identification of salivary transferrin as a biomarker for early detection of oral cancer. *Anal Chim Acta* 2010;**681**:41-8
29. Jiang WW, Masayeva B, Zahurak M, Carvalho AL, Rosenbaum E, Mambo E, Zhou S, Minhas K, Benoit N, Westra WH, Alberg A, Sidransky D, Koch W, Califano J. Increased mitochondrial DNA content in saliva associated with head and neck cancer. *Clin Cancer Res* 2005;**11**:2486-91
30. Tang H, Wu Z, Zhang J, Su B. Salivary lncRNA as a potential marker for oral squamous cell carcinoma diagnosis. *Mol Med Rep* 2013;**7**:761-6
31. Li Y, St John MA, Zhou X, Kim Y, Sinha U, Jordan RC, Eisele D, Abemayor E, Elashoff D, Park NH, Wong DT. Salivary transcriptome diagnostics for oral cancer detection. *Clin Cancer Res* 2004;**10**:8442-50
32. Sugimoto M, Wong DT, Hirayama A, Soga T, Tomita M. Capillary electrophoresis mass spectrometry-based saliva metabolomics identified oral, breast and pancreatic cancer-specific profiles. *Metabolomics* 2010;**6**:78-95
33. Wei J, Xie G, Zhou Z, Shi P, Qiu Y, Zheng X, Chen T, Su M, Zhao A, Jia W. Salivary metabolite signatures of oral cancer and leukoplakia. *Int J Cancer* 2011;**129**:2207-17
34. Wang Q, Gao P, Wang X, Duan Y. The early diagnosis and monitoring of squamous cell carcinoma via saliva metabolomics. *Sci Rep* 2014;**4**:6802
35. Almadori G, Bussu F, Galli J, Limongelli A, Persichilli S, Zappacosta B, Minucci A, Paludetti G, Giardina B. Salivary glutathione and uric acid levels in patients with head and neck squamous cell carcinoma. *Head Neck* 2007;**29**:648-54
36. Agha-Hosseini F, Mirzaii-Dizgah I, Farmanbar N, Abdollahi M. Oxidative stress status and DNA damage in saliva of human subjects with oral lichen planus and oral squamous cell carcinoma. *J Oral Pathol Med* 2012;**41**:736-40
37. Rajkumar K, Ramya R, Nandhini G, Rajashree P, Ramesh Kumar A, Nirmala Anandan S. Salivary and serum level of CYFRA 21-1 in oral precancer and oral squamous cell carcinoma. *Oral Dis* 2015;**21**:90-6
38. Shpitzer T, Hamzany Y, Bahar G, Feinmesser R, Savulescu D, Borovoi I, Gavish M, Nagler RM. Salivary analysis of oral cancer biomarkers. *Br J Cancer* 2009;**101**:1194-98
39. Rhodus NL, Cheng B, Myers S, Miller L, Ho V, Ondrey F. The feasibility of monitoring NF-kappaB associated cytokines: TNF-alpha, IL-1alpha, IL-6, and IL-8 in whole saliva for the malignant transformation of oral lichen planus. *Mol Carcinog* 2005;**44**:77-82
40. Brinkmann O, Kastratovic DA, Dimitrijevic MV, Konstantinovic VS, Jelovac DB, Antic J, Nestic VS, Markovic SZ, Martinovic ZR, Akin D, Spielmann N, Zhou H, Wong DT. Oral squamous cell carcinoma detection by salivary biomarkers in a Serbian population. *Oral Oncol* 2011;**47**:51-5
41. Elashoff D, Zhou H, Reiss J, Wang J, Henson B, Hu S, Arellano M, Sinha U, Le A, Messadi D, Wang M, Nabili V, Lingen M, Morris D, Randolph T, Feng Z, Akin D, Kastratovic DA, Chia D, Abemayor E, Wong DT. Prevalidation of salivary biomarkers for oral cancer detection. *Cancer Epidemiol Biomarkers Prev* 2012;**21**:664-72
42. Zhang L, Farrell JJ, Zhou H. Salivary transcriptomic biomarkers for detection of resectable pancreatic cancer. *Gastroenterology* 2010;**138**:949-57
43. Humeau M, Vignolle-Vidoni A, Sicard F, Martins F, Bournet B, Buscail J, Torrisani J, Cordelier P. Salivary MicroRNA in pancreatic cancer patients. *PLoS One* 2015;**10**:e0130996
44. Crew KD, Neugut AI. Epidemiology of gastric cancer. *World J Gastroenterol* 2006;**12**:354-62
45. Maconi G, Manes G, Porro GB. Role of symptoms in diagnosis and outcome of gastric cancer. *World J Gastroenterol* 2008;**14**:1149-55
46. Xiao H, Zhang Y, Kim Y, Kim S, Kim JJ, Kim KM, Yoshizawa J, Fan LY, Cao CX, Wong DT. Differential proteomic analysis of human saliva using tandem mass tags quantification for gastric cancer detection. *Sci Rep* 2016;**6**:22165
47. Spielmann N, Wong DT. Saliva: diagnostics and therapeutic perspectives. *Oral Dis* 2011;**17**:345-54
48. Lau C, Kim Y, Chia D, Spielmann N, Eibl G, Elashoff D, Wei F, Lin YL, Moro A, Grogan T, Chiang S, Feinstein E, Schafer C, Farrell J, Wong DT. Role of pancreatic cancer-derived exosomes in salivary biomarker development. *J Biol Chem* 2013;**288**:26888-97
49. Gisbert JP. Helicobacter pylori-associated diseases. *Gastroenterol Hepatol* 2015;**38**(Suppl 1):39-48
50. Martinez Torres A, Martinez Gaensly M. Helicobacter pylori: a new cardiovascular risk factor? *Rev Esp Cardiol* 2002;**55**:652-6
51. Ishihara K, Miura T, Ebihara Y, Hirayama T, Kamiya S, Okuda K. Shared antigenicity between Helicobacter pylori and periodontopathic *Campylobacter rectus* strains. *FEMS Microbiol Lett* 2001;**197**:23-7
52. Anand PS, Kamath KP, Anil S. Role of dental plaque, saliva and periodontal disease in Helicobacter pylori infection. *World J Gastroenterol* 2014;**20**:5639-53
53. Young SH, Luo JC. Will saliva test be a good method to detect Helicobacter pylori in H pylori-infected patients? *J Chin Med Assoc* 2016;**79**:351-2
54. Gholami Parizad E, Gholami Parizad E, Khosravi A, Amraei M, Valizadeh A, Davoudian A. Comparing HBV viral load in serum, cerumen, and saliva and correlation with HBeAg serum status in patients with chronic hepatitis B infection. *Hepat Mon* 2016;**16**:e30385
55. Khadse SV, Bajaj G, Vibhakar P, Nainani P, Ahuja R, Deep G. Evaluation of specificity and sensitivity of oral fluid for diagnosis of hepatitis B. *J Clin Diagn Res* 2016;**10**:BC12-4
56. Amado Leon LA, de Almeida AJ, de Paula VS, Tourinho RS, Villela DA, Gaspar AM, Lewis-Ximenez LL, Pinto MA. Longitudinal study of hepatitis A infection by saliva sampling: the kinetics of HAV markers in

- saliva revealed the application of saliva tests for hepatitis A study. *PLoS One* 2015;**10**:e0145454
57. Ghosh M, Nandi S, Dutta S, Saha MK. Detection of hepatitis B virus infection: a systematic review. *World J Hepatol* 2015;**7**:2482-91
  58. Cardoso ES, Jesus BL, Gomes LG, Sousa SM, Gadelha SR, Marin LJ. The use of saliva as a practical and feasible alternative to urine in large-scale screening for congenital cytomegalovirus infection increases inclusion and detection rates. *Rev Soc Bras Med Trop* 2015;**48**:206-7
  59. Pinninti SG, Ross SA, Shimamura M, Novak Z, Palmer AL, Ahmed A, Tolan RW Jr, Bernstein DI, Michaels MG, SÁnchez PJ, Fowler KB, Boppana SB. Comparison of saliva PCR assay versus rapid culture for detection of congenital cytomegalovirus infection. *Pediatr Infect Dis J* 2015;**34**:536-7
  60. Kwok H, Chan KW, Chan KH, Chiang AK. Distribution, persistence and interchange of Epstein-Barr virus strains among PBMC, plasma and saliva of primary infection subjects. *PLoS One* 2015;**10**:e0120710
  61. Corstjens PL, Abrams WR, Malamud D. Saliva and viral infections. *Periodontol* 2000 2016;**70**:93-110
  62. Ronaldo MC, Ribeiro IP, Lima NS, Dos Santos AA, Menezes LS, da Cruz SO, de Mello IS, Furtado ND, de Moura EE, Damasceno L, da Silva KA, de Castro MG, Gerber AL, de Almeida LG, Lourenço-de-Oliveira R, Vasconcelos AT, Brasil P. Isolation of Infective Zika Virus from Urine and Saliva of Patients in Brazil. *PLoS Negl Trop Dis* 2016;**10**:e0004816
  63. Sheikhabari S, Mokhtari-Azad T, Salimi V, Norouzbabaei Z, Abbasi S, Zahraei SM, Shahmahmoodi S. The use of oral fluid samples spotted on filter paper for the detection of measles virus using nested rt-PCR. *J Clin Lab Anal* 2012;**26**:215-22
  64. Vainio K, Samdal HH, Anestad G, Wedege E, Skutlaberg DH, Bransdal KT, Mundal R, Aaberge IS. Detection of measles- and mumps-specific IgG antibodies in paired serum and oral fluid samples from Norwegian conscripts. *Eur J Clin Microbiol Infect Dis* 2008;**27**:461-5
  65. Vijaylakshmi P, Muthukkaruppan VR, Rajasundari A, Korukluoglu G, Nigatu W, Warrenner LA, Samuel D, Brown DW. Evaluation of a commercial rubella IgM assay for use on oral fluid samples for diagnosis and surveillance of congenital rubella syndrome and postnatal rubella. *J Clin Virol* 2006;**37**:265-8
  66. Weerasekera MM, Sissons CH, Wong L, Anderson SA, Holmes AR, Cannon RD. Use of denaturing gradient gel electrophoresis (DGGE) for the identification of mixed oral yeasts in human saliva. *J Med Microbiol* 2013; **62**:319-330
  67. Riega-Torres JC, Villarreal-Gonzalez AJ, Cecenas-Falcon LA, Salas-Alanis JC. Sjogren's syndrome (SS), a review of the subject and saliva as a diagnostic method. *Gac Med Mex* 2016;**152**:371-80
  68. Asashima H, Inokuma S, Nakachi S, Matsuo Y, Rokutanda R, Hagiwara K, Kobayashi S. Extremely high salivary beta(2) -microglobulin and Na(+) levels in a Sjogren syndrome patient. *Int J Rheum Dis* 2012;**15**:e31-3
  69. Streckfus C, Bigler L, Navazesh M, Al-Hashimi I. Cytokine concentrations in stimulated whole saliva among patients with primary Sjogren's syndrome, secondary Sjogren's syndrome, and patients with primary Sjogren's syndrome receiving varying doses of interferon for symptomatic treatment of the condition: a preliminary study. *Clin Oral Invest* 2001;**5**:133-5
  70. Hu S, Wang J, Meijer J, Jeong S, Xie Y, Yu T, Zhou H, Henry S, Vissink A, Pijpe J, Kallenberg C, Elashoff D, Loo JA, Wong DT. Salivary proteomic and genomic biomarkers for primary Sjogren's syndrome. *Arthritis Rheum* 2007;**56**:3588-600
  71. Hu S, Gao K, Pollard R, Arellano-Garcia M, Zhou H, Zhang L, Elashoff D, Kallenberg CG, Vissink A, Wong DT. Preclinical validation of salivary biomarkers for primary Sjogren's syndrome. *Arthritis Care Res* 2010;**62**:1633-8
  72. Hu S, Vissink A, Arellano M, Roozendaal C, Zhou H, Kallenberg CG, Wong DT. Identification of autoantibody biomarkers for primary Sjogren's syndrome using protein microarrays. *Proteomics* 2011;**11**:1499-507
  73. Acar S, Yetkiner AA, Ersin N, Oncag O, Aydogdu S, Arikan C. Oral findings and salivary parameters in children with celiac disease: a preliminary study. *Med Princ Pract* 2012;**21**:129-33
  74. Adornetto G, Fabiani L, Volpe G, De Stefano A, Martini S, Nenna R, Lucantoni F, Bonamico M, Tiberti C, Moscone D. An electrochemical immunoassay for the screening of celiac disease in saliva samples. *Anal Bioanal Chem* 2015;**407**:7189-7196
  75. Bonamico M, Nenna R, Montuori M, Luparia RP, Turchetti A, Mennini M, Lucantoni F, Masotti D, Magliocca FM, Culasso F, Tiberti C. First salivary screening of celiac disease by detection of anti-transglutaminase autoantibody radioimmunoassay in 5000 Italian primary schoolchildren. *J Pediatr Gastroenterol Nutr* 2011;**52**:17-20
  76. Dane A, Gurbuz T. Clinical evaluation of specific oral and salivary findings of coeliac disease in eastern Turkish paediatric patients. *Eur J Paediatr Dent* 2016;**17**:53-6
  77. Livnat G, Bentur L, Kuzmisky E, Nagler RM. Salivary profile and oxidative stress in children and adolescents with cystic fibrosis. *J Oral Pathol Med* 2010;**39**:16-21
  78. Zetterquist W, Marteus H, Kalm-Stephens P, Nas E, Nordvall L, Johannesson M, Alving K. Oral bacteria - the missing link to ambiguous findings of exhaled nitrogen oxides in cystic fibrosis. *Respir Med* 2009;**103**:187-193
  79. Goncalves AC, Augusto de Lima Marson F, Maria de Holanda Mendonca R, Ribeiro JD, Ribeiro AF, Paschoal IA, Levy CE. Saliva as a potential tool for cystic fibrosis diagnosis. *Diagn Pathol* 2013;**8**:46
  80. de Almeida EA, Di Mascio P, Harumi T, Spence DW, Moscovitch A, Hardeband R, Cardinali DP, Brown GM, Pandi-Perumal SR. Measurement of melatonin in body fluids: standards, protocols and procedures. *Childs Nerv Syst* 2011;**27**:879-91
  81. Inder WJ, Dimeski G, Russell A. Measurement of salivary cortisol in 2012 - laboratory techniques and clinical indications. *Clin Endocrinol* 2012;**77**:645-51
  82. Gao K, Zhou H, Zhang L, Lee JW, Zhou Q, Hu S, Wolinsky LE, Farrell J, Eibl G, Wong DT. Systemic disease-induced salivary biomarker profiles in mouse models of melanoma and non-small cell lung cancer. *PLoS One* 2009;**4**:e5875
  83. Manolopoulou J, Mulatero P, Maser-Gluth C, Rossignol P, Spyrogrou A, Vakrilova Y, Petersenn S, Zwermann O, Plouin PF, Reincke M, Bidlingmaier M. Saliva as a medium for aldosterone measurement in repeated sampling studies. *Steroids* 2009;**74**:853-8
  84. Agha-Hosseini F, Mirzaii-Dizgah I, Mansourian A, Zabihi-Akhtechi G. Serum and stimulated whole saliva parathyroid hormone in menopausal women with oral dry feeling. *Oral Surg Oral Med Oral Pathol Oral Radiol Endod* 2009;**107**:806-10
  85. Jurysta C, Bulur N, Oguzhan B, Satman I, Yilmaz TM, Malaisse WJ, Sener A. Salivary glucose concentration and excretion in normal and diabetic subjects. *J Biomed Biotechnol* 2009;**2009**:430426
  86. Lakshmi PV, Sridevi E, Sai Sankar AJ, Manoj Kumar MG, Sridhar M, Sujatha B. Diagnostic perspective of saliva in insulin dependent diabetes mellitus children: An in vivo study. *Contemp Clin Dent* 2015;**6**:443-7
  87. Hartman ML, Goodson JM, Shi P, Vargas J, Yaskell T, Stephens D, Cugini M, Hasturk H, Barake R, Alsmadi O, Al-Mutawa S, Ariga J, Soparkar P, Behbehani J, Behbehani K, Welty F. Unhealthy phenotype as indicated by salivary biomarkers: glucose, insulin, VEGF-A, and IL-12p70 in obese Kuwaiti adolescents. *J Obes* 2016;**2016**:6860240
  88. Filaire E, Lac G. Dehydroepiandrosterone (DHEA) rather than testosterone shows saliva androgen responses to exercise in elite female handball players. *Int J Sports Med* 2000;**21**:17-20
  89. Laby Z, Prieur F, Le Panse B, Do MC, Gagey O, Lasne F, Collomp K. The diurnal patterns of cortisol and dehydroepiandrosterone in relation to intense aerobic exercise in recreationally trained soccer players. *Stress* 2013;**16**:261-5
  90. Mirzaii-Dizgah I, Agha-Hosseini F. Stimulated and unstimulated saliva progesterone in menopausal women with oral dryness feeling. *Clin Oral Invest* 2011;**15**:859-62
  91. Marrs CR, Ferraro DP, Cross CL. Salivary hormones and parturition in healthy, primigravid women. *Int J Gynaecol Obstet* 2007;**99**:59-60
  92. Elias PC, Martinez EZ, Barone BF, Mermejo LM, Castro M, Moreira AC. Late-night salivary cortisol has a better performance than urinary free cortisol in the diagnosis of Cushing's syndrome. *J Clin Endocrinol Metab* 2014;**99**:2045-51



93. Antonelli G, Ceccato F, Artusi C, Marinova M, Plebani M. Salivary cortisol and cortisone by LC-MS/MS: validation, reference intervals and diagnostic accuracy in Cushing's syndrome. *Clin Chim Acta* 2015;**451**:247-51
94. Ceccato F, Boscaro M. Cushing's syndrome: screening and diagnosis. *High Blood Press Cardiovasc Prev* 2016;**23**:209-15
95. Celec P, Ostanikova D, Skoknova M, Hodosy J, Putz Z, Kudela M. Salivary sex hormones during the menstrual cycle. *Endocr J* 2009;**56**:521-3
96. Amatory M, Lee JW, Maguire AM, Ambler GR, Steinbeck KS. Utility of salivary enzyme immunoassays for measuring estradiol and testosterone in adolescents: a pilot study. *Int J Adolesc Med Health*. Epub ahead of print 9 April 2016. DOI: 10.1515/ijamh-2015-0126
97. Agha-Hosseini F, Moosavi MS, Mirzaii-Dizgah I. Salivary flow, testosterone, and femur bone mineral density in menopausal women with oral dryness feeling. *Oral Surg Oral Med Oral Pathol Oral Radiol* 2013;**115**:612-6
98. Bali A, Jaggi AS. Clinical experimental stress studies: methods and assessment. *Rev Neurosci* 2015;**26**:555-79
99. Gullander M, Grynderup M, Hansen AM, Hogh A, Persson R, Kolstad HA, Mors O, Kaerlev L, Bonde JP. Are changes in workplace bullying status related to changes in salivary cortisol? A longitudinal study among Danish employees. *J Psychosom Res* 2015;**79**:435-42
100. Tanaka Y, Ishitobi Y, Maruyama Y, Kawano A, Ando T, Okamoto S, Kanehisa M, Higuma H, Ninomiya T, Tsuru J, Hanada H, Kodama K, Isogawa K, Akiyoshi J. Salivary alpha-amylase and cortisol responsiveness following electrical stimulation stress in major depressive disorder patients. *Prog Neuropsychopharmacol Biol Psychiatry* 2012;**36**:220-4
101. Granger DA, Kivlighan KT, el-Sheikh M, Gordis EB, Stroud LR. Salivary alpha-amylase in biobehavioral research: recent developments and applications. *Ann N Y Acad Sci* 2007;**1098**:122-44
102. Kivlighan KT, Granger DA. Salivary alpha-amylase response to competition: relation to gender, previous experience, and attitudes. *Psychoneuroendocrinology* 2006;**31**:703-14
103. Richter J, Bittner A, Petrowski K, Junge-Hoffmeister J, Bergmann S, Joraschky P, Weidner K. Effects of an early intervention on perceived stress and diurnal cortisol in pregnant women with elevated stress, anxiety, and depressive symptomatology. *J Psychosom Obstet Gynaecol* 2012;**33**:162-70
104. Rai B, Kaur J, Anand SC, Jacobs R. Salivary stress markers, stress, and periodontitis: a pilot study. *J Periodontol* 2011;**82**:287-92
105. McGregor BA, Murphy KM, Albano DL, Ceballos RM. Stress, cortisol, and B lymphocytes: a novel approach to understanding academic stress and immune function. *Stress* 2016;**19**:185-91
106. Idris A, Ghazali NB, Said NM, Steele M, Koh D, Tuah NA. Salivary testosterone as a potential indicator for risky behaviour associated with smoking-related peer pressure in adolescents. *Int J Adolesc Med Health*. Epub ahead of print 9 April 2016. DOI: 10.1515/ijamh-2015-0125
107. van der Meij L, Schaveling J, van Vugt M. Basal testosterone, leadership and dominance: a field study and meta-analysis. *Psychoneuroendocrinology* 2016;**72**:72-9
108. Walt DR, Blicharz TM, Hayman RB, Rissin DM, Bowden M, Siqueira WL, Helmerhorst EJ, Grand-Pierre N, Oppenheim FG, Bhatia JS, Little FF, Brody JS. Microsensor arrays for saliva diagnostics. *Ann N Y Acad Sci* 2007;**1098**:389-400
109. Tomas I, Marinho JS, Limeres J, Santos MJ, Araujo L, Diz P. Changes in salivary composition in patients with renal failure. *Arch Oral Biol* 2008;**53**:528-32
110. Venkatapathy R, Govindarajan V, Oza N, Parameswaran S, Pennagaram Dhanasekaran B, Prashad KV. Salivary creatinine estimation as an alternative to serum creatinine in chronic kidney disease patients. *Int J Nephrol* 2014;**2014**:742724
111. Ozbay Y, Aydin S, Dagli AF, Akbulut M, Dagli N, Kilic N, Rahman A, Sahin I, Polat V, Ozercan HI, Arslan N, Sensoy D. Obestatin is present in saliva: alterations in obestatin and ghrelin levels of saliva and serum in ischemic heart disease. *BMB Rep* 2008;**41**:55-61
112. Chatterton RT Jr, Vogel song KM, Lu YC, Ellman AB, Hudgens GA. Salivary alpha-amylase as a measure of endogenous adrenergic activity. *Clin Physiol* 1996;**16**:433-48
113. Miller CS, Foley JD 3rd, Floriano PN, Christodoulides N, Ebersole JL, Campbell CL, Bailey AL, Rose BG, Kinane DF, Novak MJ, McDevitt JT, Ding X, Kryscio RJ. Utility of salivary biomarkers for demonstrating acute myocardial infarction. *J Dent Res* 2014;**93**:725-9
114. Shen YS, Chen WL, Chang HY, Kuo HY, Chang YC, Chu H. Diagnostic performance of initial salivary alpha-amylase activity for acute myocardial infarction in patients with acute chest pain. *J Emerg Med* 2012;**43**:553-60
115. Floriano PN, Christodoulides N, Miller CS, Ebersole JL, Spertus J, Rose BG, Kinane DF, Novak MJ, Steinhubl S, Acosta S, Mohanty S, Dharshan P, Yeh CK, Redding S, Furmaga W, McDevitt JT. Use of saliva-based nano-biochip tests for acute myocardial infarction at the point of care: a feasibility study. *Clin Chem* 2009;**55**:1530-8
116. Hartman ML, Goodson JM, Barake R, Alsmadi O, Al-Mutawa S, Ariga J, Soparkar P, Behbehani J, Behbehani K. Salivary biomarkers in pediatric metabolic disease research. *Pediatr Endocrinol Rev* 2016;**13**:602-11
117. Bencharit S, Baxter SS, Carlson J, Byrd WC, Mayo MV, Border MB, Kohltfarber H, Urrutia E, Howard-Williams EL, Offenbacher S, Wu MC, Buse JB. Salivary proteins associated with hyperglycemia in diabetes: a proteomic analysis. *Mol Biosyst* 2013;**9**:2785-97
118. Kadashetti V, Baad R, Malik N, Shivakumar KM, Vibhute N, Belgaumi U, Gugawad S, Pramod RC. Glucose level estimation in diabetes mellitus by saliva: a bloodless revolution. *Rom J Intern Med* 2015;**53**:248-52
119. Indira M, Chandrashekar P, Kattappagari KK, Chandra LP, Chitturi RT, Bv RR. Evaluation of salivary glucose, amylase, and total protein in Type 2 diabetes mellitus patients. *Indian J Dent Res* 2015;**26**:271-5
120. Malicka B, Kaczmarek U, Skoskiewicz-Malinowska K. Selected antibacterial factors in the saliva of diabetic patients. *Arch Oral Biol* 2015;**60**:425-31
121. Aitken-Saavedra J, Rojas-Alcayaga G, Maturana-Ramirez A, Escobar-Alvarez A, Cortes-Coloma A, Reyes-Rojas M, Viera-Sapiain V, Villablanca-Martínez C, Morales-Bozo I. Salivary gland dysfunction markers in type 2 diabetes mellitus patients. *J Clin Exp Dent* 2015;**7**:e501-5
122. Shi M, Sui YT, Peskind ER, Li G, Hwang H, Devic I, Ginghina C, Edgar JS, Pan C, Goodlett DR, Furay AR, Gonzalez-Cuyar LF, Zhang J. Salivary tau species are potential biomarkers of Alzheimer's disease. *J Alzheimers Dis* 2011;**27**:299-305
123. Jang MU, Park JW, Kho HS, Chung SC, Chung JW. Plasma and saliva levels of nerve growth factor and neuropeptides in chronic migraine patients. *Oral Dis* 2011;**17**:187-93
124. Gatti R, De Palo EF. An update: salivary hormones and physical exercise. *Scand J Med Sci Sports* 2011;**21**:157-69
125. Zauber H, Mosler S, von Hessberg A, Schulze WX. Dynamics of salivary proteins and metabolites during extreme endurance sports - a case study. *Proteomics* 2012;**12**:2221-35
126. Khare P, Raj V, Chandra S, Agarwal S. Quantitative and qualitative assessment of DNA extracted from saliva for its use in forensic identification. *J Forensic Dent Sci* 2014;**6**:81-5
127. Kaufman E, Lamster IB. Analysis of saliva for periodontal diagnosis - a review. *J Clin Periodontol* 2000;**27**:453-65
128. Loesche WJ, Lopatin DE, Giordano J, Alcoforado G, Hujuel P. Comparison of the benzoyl-DL-arginine-naphthylamide (BANA) test, DNA probes, and immunological reagents for ability to detect anaerobic periodontal infections due to *Porphyromonas gingivalis*, *Treponema denticola*, and *Bacteroides forsythus*. *J Clin Microbiol* 1992;**30**:427-33
129. Lanza E, Magan-Fernandez A, Bermejo B, de Rojas J, Marfil-Alvarez R, Mesa F. Complementary clinical effects of red complex bacteria on generalized periodontitis in a Caucasian population. *Oral Dis* 2016;**22**:430-7

130. Knight ET, Liu J, Seymour GJ, Faggion CM Jr, Cullinan MP. Risk factors that may modify the innate and adaptive immune responses in periodontal diseases. *Periodontol* 2000;71:22-51
131. Castro CE, Koss MA, Lopez ME. Biochemical markers of the periodontal ligament. *Med Oral* 2003;8:322-8
132. Taba M Jr, Kinney J, Kim AS, Giannobile WV. Diagnostic biomarkers for oral and periodontal diseases. *Dent Clin North Am* 2005;49:551-71
133. Giannobile WV. C-telopeptide pyridinoline cross-links. Sensitive indicators of periodontal tissue destruction. *Ann N Y Acad Sci* 1999;878:404-12
134. Pihlstrom BL, Michalowicz BS, Johnson NW. Periodontal diseases. *Lancet* 2005;366:1809-20
135. Lamster IB, Kaufman E, Grbic JT, Winston LJ, Singer RE. Beta-glucuronidase activity in saliva: relationship to clinical periodontal parameters. *J Periodontol* 2003;74:353-9
136. Takane M, Sugano N, Iwasaki H, Iwano Y, Shimizu N, Ito K. New biomarker evidence of oxidative DNA damage in whole saliva from clinically healthy and periodontally diseased individuals. *J Periodontol* 2002;73:551-4
137. Herr AE, Hatch AV, Throckmorton DJ, Tran HM, Brennan JS, Giannobile WV, Singh AK. Microfluidic immunoassays a rapid saliva-based clinical diagnostics. *Proc Natl Acad Sci U S A* 2007;104:5268-73
138. Dede FO, Ozden FO, Avci B. 8-hydroxy-deoxyguanosine levels in gingival crevicular fluid and saliva in patients with chronic periodontitis after initial periodontal treatment. *J Periodontol* 2013;84:821-8
139. Barnes VM, Ciancio SG, Shibly O, Xu T, Devizio W, Trivedi HM, Guo L, Jönsson TJ. Metabolomics reveals elevated macromolecular degradation in periodontal disease. *J Dent Res* 2011;90:1293-7
140. Banas JA. Virulence properties of *Streptococcus mutans*. *Front Biosci* 2004;9:1267-1277
141. Guo L, Shi W. Salivary biomarkers for caries risk assessment. *J Calif Dent Assoc* 2013;41:107-9, 112-8
142. Tao R, Jurevic RJ, Coulton KK, Tsutsui MT, Roberts MC, Kimball JR, Wells N, Berndt J, Dale BA. Salivary antimicrobial peptide expression and dental caries experience in children. *Antimicrob Agents Chemother* 2005;49:3883-8
143. Kirstila V, Hakkinen P, Jentsch H, Vilja P, Tenovuo J. Longitudinal analysis of the association of human salivary antimicrobial agents with caries increment and cariogenic micro-organisms: a two-year cohort study. *J Dent Res* 1998;77:73-80
144. Matsukubo T, Ohta K, Maki Y, Takeuchi M, Takazoe I. A semi-quantitative determination of *Streptococcus mutans* using its adherent ability in a selective medium. *Caries Res* 1981;15:40-5
145. Gross EL, Leys EJ, Gasparovich SR, Firestone ND, Schwartzbaum JA, Janies DA, Asnani K, Griffen AL. Bacterial 16S sequence analysis of severe caries in young permanent teeth. *J Clin Microbiol* 2010;48:4121-8
146. Lazarevic V, Whiteson K, Hernandez D, Francois P, Schrenzel J. Study of inter- and intra-individual variations in the salivary microbiota. *BMC Genomics* 2010;11:523
147. Akiyama T, Miyamoto H, Fukuda K, Sano N, Katagiri N, Shobuike T, Kukita A, Yamashita Y, Taniguchi H, Goto M. Development of a novel PCR method to comprehensively analyze salivary bacterial flora and its application to patients with odontogenic infections. *Oral Surg Oral Med Oral Pathol Oral Radiol Endod* 2010;109:669-76
148. Iwasaki LR, Haack JE, Nickel JC, Reinhardt RA, Petro TM. Human interleukin-1 beta and interleukin-1 receptor antagonist secretion and velocity of tooth movement. *Arch Oral Biol* 2001;46:185-9
149. Waddington RJ, Embery G. Proteoglycans and orthodontic tooth movement. *J Orthod* 2001;28:281-90
150. Burke JC, Evans CA, Crosby TR, Mednieks MI. Expression of secretory proteins in oral fluid after orthodontic tooth movement. *Am J Orthod Dentofacial Orthop* 2002;121:310-5
151. Ramos Sde P, Ortolan GO, Dos Santos LM, Tobouti PL, Hidalgo MM, Consolaro A, Itano EN. Anti-dentine antibodies with root resorption during orthodontic treatment. *Eur J Orthod* 2011;33:584-91
152. Dwivedi R, Gupta YK, Singh M, Joshi R, Tiwari P, Kaleekal T, et al. Correlation of saliva and serum free valproic acid concentrations in persons with epilepsy. *Seizure* 2015;25:187-90
153. Yamada E, Takagi R, Sudo K, Kato S. Determination of abacavir, tenofovir, darunavir, and raltegravir in human plasma and saliva using liquid chromatography coupled with tandem mass spectrometry. *J Pharm Biomed Anal* 2015;114:390-7
154. Etter JF. A longitudinal study of cotinine in long-term daily users of e-cigarettes. *Drug Alcohol Depend* 2016;160:218-21
155. Cone EJ, Clarke J, Tsanaclis L. Prevalence and disposition of drugs of abuse and opioid treatment drugs in oral fluid. *J Anal Toxicol* 2007;31:424-33
156. Huestis MA, Cone EJ. Methamphetamine disposition in oral fluid, plasma, and urine. *Ann N Y Acad Sci* 2007;1098:104-121
157. Christodoulides N, De La Garza R 2nd, Simmons GW, McRae MP, Wong J, Newton TF, Kosten TR, Haque A, McDevitt JT. Next generation programmable bio-nano-chip system for on-site detection in oral fluids. *J Drug Abuse* 2015;1:1-6
158. Criado-Garcia L, Ruzsiewicz DM, Eiceman GA, Thomas CL. A rapid and non-invasive method to determine toxic levels of alcohols and gamma-hydroxybutyric acid in saliva samples by gas chromatography-differential mobility spectrometry. *J Breath Res* 2016;10:017101
159. Wong DT. Salivaomics. *J Am Dent Assoc* 2012;143:19S-24
160. Anderson NL, Anderson NG. Proteome and proteomics: new technologies, new concepts, and new words. *Electrophoresis* 1998;19:1853-61
161. Amado FM, Ferreira RP, Vitorino R. One decade of salivary proteomics: current approaches and outstanding challenges. *Clin Biochem* 2013;46:506-17
162. Wong DT. Salivary diagnostics powered by nanotechnologies, proteomics and genomics. *J Am Dent Assoc* 2006;137:313-21
163. Kossowska B, Dudka I, Gancarz R, Antonowicz-Juchniewicz J. Proteomic analysis of protein profiles in some pathological stages of the human organism. *Postepy Hig Med Dosw* 2009;63:549-63
164. Krief G, Deutsch O, Zaks B, Wong DT, Aframian DJ, Palmon A. Comparison of diverse affinity based high-abundance protein depletion strategies for improved bio-marker discovery in oral fluids. *J Proteomics* 2012;75:4165-75
165. Deutsch O, Fleissig Y, Zaks B, Krief G, Aframian DJ, Palmon A. An approach to remove alpha amylase for proteomic analysis of low abundance biomarkers in human saliva. *Electrophoresis* 2008;29:4150-7
166. Krief G, Deutsch O, Gariba S, Zaks B, Aframian DJ, Palmon A. Improved visualization of low abundance oral fluid proteins after triple depletion of alpha amylase, albumin and IgG. *Oral Dis* 2011;17:45-52
167. Sweet SP, Denbury AN, Challacombe SJ. Salivary calprotectin levels are raised in patients with oral candidiasis or Sjogren's syndrome but decreased by HIV infection. *Oral Microbiol Immunol* 2001;16:119-23
168. Stott-Miller M, Houck JR, Lohavanichbutr P, Mendez E, Upton MP, Futran ND, Schwartz SM, Chen C. Tumor and salivary matrix metalloproteinase levels are strong diagnostic markers of oral squamous cell carcinoma. *Cancer Epidemiol Biomarkers Prev* 2011;20:2628-36
169. Loeb LM, Naffah-Mazzacoratti MG, Porcionatto MA, Martins JR, Kouyoumdjian M, Weckx LM, Nadera HB. Chondroitin sulfate and kallikrein in saliva: markers for glossodynia. *Int Immunopharmacol* 2008;8:1056-8
170. Drake RR, Cazare LH, Semmes OJ, Wadsworth JT. Serum, salivary and tissue proteomics for discovery of biomarkers for head and neck cancers. *Expert Rev Mol Diagn* 2005;5:93-100
171. Fleissig Y, Deutsch O, Reichenberg E, Redlich M, Zaks B, Palmon A, Aframian DJ. Different proteomic protein patterns in saliva of Sjogren's syndrome patients. *Oral Dis* 2009;15:61-8
172. Castagnola M, Messana I, Inzitari R, Fanali C, Cabras T, Morelli A, Pecoraro AM, Neri G, Torrioli MG, Gurrieri F. Hypo-phosphorylation of salivary peptidome as a clue to the molecular pathogenesis of autism spectrum disorders. *J Proteome Res* 2008;7:5327-32

173. Bazzichi L, Ciregia F, Giusti L, Baldini C, Giannaccini G, Giacomelli C, Sernissi F, Bombardieri S, Lucacchini A. Detection of potential markers of primary fibromyalgia syndrome in human saliva. *Proteomics Clin Appl* 2009;**3**:1296–1304
174. Streckfus CF, Bigler LR, Zwick M. The use of surface-enhanced laser desorption/ionization time-of-flight mass spectrometry to detect putative breast cancer markers in saliva: a feasibility study. *J Oral Pathol Med* 2006;**35**:292–300
175. Wang Z, Gerstein M, Snyder M. RNA-Seq: a revolutionary tool for transcriptomics. *Nat Rev Genet* 2009;**10**:57–63
176. Bahn JH, Zhang Q, Li F, Chan TM, Lin X, Kim Y, Wong DT, Xiao X. The landscape of microRNA, Piwi-interacting RNA, and circular RNA in human saliva. *Clin Chem* 2015;**61**:221–30
177. Zhang L, Xiao H, Zhou H, Santiago S, Lee JM, Garon EB, Yang J, Brinkmann O, Yan X, Akin D, Chia D, Elashoff D, Park NH, Wong DT. Development of transcriptomic biomarker signature in human saliva to detect lung cancer. *Cell Mol Life Sci* 2012;**69**:3341–50
178. Lee YH, Kim JH, Zhou H, Kim BW, Wong DT. Salivary transcriptomic biomarkers for detection of ovarian cancer: for serous papillary adenocarcinoma. *J Mol Med* 2012;**90**:427–34
179. Zhang L, Xiao H, Karlan S, Zhou H, Gross J, Elashoff D, Akin D, Yan X, Chia D, Karlan B, Wong DT. Discovery and preclinical validation of salivary transcriptomic and proteomic biomarkers for the non-invasive detection of breast cancer. *PLoS One* 2010;**5**:e15573
180. Palermo M, Driscoll H, Tighe S, Dragon J, Bond J, Shukla A, Vangala M, Vincent J. Expression profiling smackdown: human transcriptome array HTA 2.0 vs. RNA. *Seq. Journal of Biomolecular Techniques* 2014;**25**:S20–1
181. Spielmann N, Ilesley D, Gu J, Lea K, Brockman J, Heater S, Setterquist R, Wong DT. The human salivary RNA transcriptome revealed by massively parallel sequencing. *Clin Chem* 2012;**58**:1314–21
182. Lu J, Getz G, Miska EA, Alvarez-Saavedra E, Lamb J, Peck D, Sweet-Cordero A, Ebert BL, Mak RH, Ferrando AA, Downing JR, Jacks T, Horvitz HR, Golub TR. MicroRNA expression profiles classify human cancers. *Nature* 2005;**435**:834–8
183. Stadler BM, Ruohola-Baker H. Small RNAs: keeping stem cells in line. *Cell* 2008;**132**:563–6
184. Taganov KD, Boldin MP, Baltimore D. MicroRNAs and immunity: tiny players in a big field. *Immunity* 2007;**26**:133–7
185. Beger RD. A review of applications of metabolomics in cancer. *Metabolites* 2013;**3**:552–74
186. Farrell JJ, Zhang L, Zhou H, Chia D, Elashoff D, Akin D, Paster BJ, Joshupura K, Wong DT. Variations of oral microbiota are associated with pancreatic diseases including pancreatic cancer. *Gut* 2012;**61**:582–8
187. Koneru S, Tanikonda R. Salivaomics - A promising future in early diagnosis of dental diseases. *Dent Res J (Isfahan)* 2014;**11**:11–5
188. Gau V, Wong D. Oral fluid nanosensor test (OFNASET) with advanced electrochemical-based molecular analysis platform. *Ann N Y Acad Sci* 2007;**1098**:401–10
189. Bartlett CA, Taylor S, Fernandez C, Wanklyn C, Burton D, Enston E, Raniczkowska A, Black M, Murphy L. Disposable screen printed sensor for the electrochemical detection of methamphetamine in undiluted saliva. *Chem Cent J* 2016;**10**:3-016-0147-2
190. Wang J, Chen Z, Corstjens PL, Mauk MG, Bau HH. A disposable microfluidic cassette for DNA amplification and detection. *Lab Chip* 2006;**6**:46–53
191. Blicharz TM, Siqueira WL, Helmerhorst EJ, Oppenheim FG, Wexler PJ, Little FF, Walt DR. Fiber-optic microsphere-based antibody array for the analysis of inflammatory cytokines in saliva. *Anal Chem* 2009;**81**:2106–14
192. Abraham JE, Maranian MJ, Spiteri I, Russell R, Ingle S, Luccarini C, Earl HM, Pharoah PP, Dunning AM, Caldas C. Saliva samples are a viable alternative to blood samples as a source of DNA for high throughput genotyping. *BMC Med Genomics* 2012;**5**:19-8794-5-19
193. Yager P, Edwards T, Fu E, Helton K, Nelson K, Tam MR, Weigl BH. Microfluidic diagnostic technologies for global public health. *Nature* 2006;**442**:412–8
194. Srinivasan V, Pamula VK, Fair RB. An integrated digital microfluidic lab-on-a-chip for clinical diagnostics on human physiological fluids. *Lab Chip* 2004;**4**:310–5
195. Diaz LA Jr, Bardelli A. Liquid biopsies: genotyping circulating tumor DNA. *J Clin Oncol* 2014;**32**:579–86
196. Wei F, Lin CC, Joon A, Feng Z, Troche G, Lira ME, Chia D, Mao M, Ho CL, Su WC, Wong DT. Noninvasive saliva-based EGFR gene mutation detection in patients with lung cancer. *Am J Respir Crit Care Med* 2014;**190**:1117–26
197. Wei F, Yang J, Wong DT. Detection of exosomal biomarker by electric field-induced release and measurement (EFIRM). *Biosens Bioelectron* 2013;**44**:115–21