

1 SARS-CoV-2 Spike N-Terminal Domain modulates TMPRSS2-dependent viral
2 entry and fusogenicity

3

4 Bo Meng^{1,2,*}, Rawlings Datir^{1,2}, Jinwook Choi³, CITIID-NIHR BioResource COVID-19 Collaboration, John
5 Bradley^{2,4}, Kenneth GC Smith^{1,2}, Joo Hyeon Lee^{3,5}, Ravindra K. Gupta^{1,2,6,*}

6

7 ¹Cambridge Institute of Therapeutic Immunology & Infectious Disease (CITIID), Cambridge, UK.

8 ²Department of Medicine, University of Cambridge, Cambridge, UK.

9 ³Wellcome-MRC Cambridge Stem Cell Institute, Cambridge, UK.

10 ⁴NIHR Bioresource, Cambridge, UK.

11 ⁵Department of Physiology, Development and Neuroscience, University of Cambridge, Cambridge, UK.

12 ⁶Africa Health Research Institute, Durban, South Africa

13

14 *Correspondence to :

15 Bo Meng bm432@cam.ac.uk or Ravindra K. Gupta rkg20@cam.ac.uk

16

17

18

19 Key words: SARS-CoV-2, NTD, fusogenicity, TMPRSS2, Organoid, Delta, Omicron

20

21

22

23

24

25 Abstract

26 Over 20 mutations have been identified in the N-Terminal Domain (NTD) of SARS-CoV-2 spike and
27 yet few of them are fully characterised. Here we first examined the contribution of the NTD to
28 infection and cell-cell fusion by constructing different VOC-based chimeric spikes bearing B.1617
29 lineage (Delta and Kappa variants) NTDs and generating spike pseudotyped lentivirus (PV). We found
30 the Delta NTD on a Kappa or WT background increased spike S1/S2 cleavage efficiency and virus
31 entry, specifically in Calu-3 lung cells and airway organoids, through use of TMPRSS2. We have
32 previously shown Delta spike confers rapid cell-cell fusion kinetics; here we show that increased
33 fusogenicity can be conferred to WT and Kappa variant spikes by transfer of the Delta NTD. Moving
34 to contemporary variants, we found that BA.2 had higher entry efficiency in a range of cell types as
35 compared to BA.1. BA.2 showed higher fusogenic activity than BA.1, but the BA.2 NTD could not
36 confer higher fusion to BA.1 spike. There was low efficiency of TMPRSS2 usage by both BA.1 and
37 BA.2, and chimeras of Omicron BA.1 and BA.2 spikes with a Delta NTD did not result in more efficient
38 use of TMRPSS2 or cell-cell fusogenicity. We conclude that the NTD allosterically modulates S1/S2
39 cleavage and spike-mediated functions such as entry and cell-cell fusion in a spike context
40 dependent manner, and allosteric interactions may be lost when combining regions from more
41 distantly related spike proteins. These data may explain the lack of successful SARS-CoV-2 inter-
42 variant recombinants bearing breakpoints within spike.

43

44

45

46

47

48

49

50

51

52 Introduction

53 The SARS-CoV-2 furin cleavage site (also known as a polybasic cleavage site), cleaved in producer
54 cells by a ubiquitously expressed protease furin (Hoffmann et al., 2020a), is believed to be one of the
55 main reasons behind the success of SARS-CoV2 worldwide (Johnson et al., 2021; Peacock et al.,
56 2021). Upon virus release the trimeric spike engages with angiotensin converting enzyme 2 (ACE2) of
57 the target cells to initiate virus entry (Jackson et al., 2022; Peng et al., 2021). Depending on the
58 abundance of the cofactor TMPRSS2 and the status of spike cleavage (Hoffmann et al., 2020b; Ou et
59 al., 2021a, 2021b; Park et al., 2016; Whittaker et al., 2021), the virus either enters through the
60 TMPRSS2 mediated route by fusing at the plasma membrane or via late endosomes through a
61 secondary cleavage preceding the concealed fusion peptide at S2' (Figure 1A). The latter does not
62 require a pre-cleaved spike at S1/S2, as cathepsin can mediate cleavage of both S1/S2 and S2'.

63 Kappa (B.1.617.1) and Delta (B.1.617.2) SARS-CoV-2 variants were first detected in India in late 2020
64 (Dhar et al., 2021; Ferreira et al., 2021). Although Kappa, the earliest detected B.1.617 variant in
65 India, displayed greater escape to vaccine-elicited antibody responses (McCallum et al., 2021a),
66 Delta surpassed Kappa to become the dominant strain in India and worldwide by mid-2021
67 (Mlcochova et al., 2021). The S gene encodes 8 and 9 non-synonymous mutations in Kappa and
68 Delta, respectively and four of which are shared by both (Figure 1A). The NTD is more variable
69 between the two (3 and 4 mutations relative to Wu-1 in Kappa and Delta, respectively). In contrast,
70 the RBD, each bearing two mutations, is more constrained most likely due to its obligatory role in
71 engaging with ACE2. Diverse mutations in the NTD are not unique to Kappa or Delta and have been
72 documented in Alpha and many other VOCs (McCarthy et al., 2021). Additionally, both Kappa and
73 Delta share two conserved mutations at D614G and P681R and a unique mutation at S2; Q1071H for
74 Kappa and D950N for Delta.

75 We previously showed that both Kappa and Delta spikes exhibit highly efficient cleavage of S1/S2
76 over 614G WT (Mlcochova et al., 2021). Intriguingly Delta appears to be superior to Kappa in
77 entering Calu3 cells and organoids expressing endogenous level of ACE2 and TMPRSS2. Receptor
78 binding is modestly increased in Delta but lower than the preceding strains of VOCs, for example
79 Alpha (Collier et al., 2021a; Liu et al., 2022; Ulrich et al., 2022), indicating enhanced receptor binding
80 cannot solely explain the higher transmissibility of Delta (Barton et al., 2021; McCallum et al., 2021a;
81 Ramanathan et al., 2021; Saville et al., 2022; Supasa et al., 2021). Moreover, cryo-EM structures of
82 Delta and Kappa trimeric spike show that both RBD and S2 adopt a remarkably similar geometry
83 suggesting those two regions are less likely to be accountable for the increased entry of Delta over
84 Kappa (Zhang et al., 2021a). *In vitro* studies using replication competent virus isolates showed that

85 Delta has fast replication kinetics in Calu3, human airway epithelium cells and in airway organoids
86 (Mlcochova et al., 2021). However, the underlying molecular mechanism for the high transmissibility
87 of Delta over Kappa in the real world is elusive.

88 Our published data also showed that the RBD on its own did not confer higher infectivity to Kappa
89 (Ferreira et al., 2021), suggesting the NTD may be responsible for the increased infectivity. The NTD
90 interacts with cofactors L-SIGN and DC-SIGN at the cell surface (Lempp et al., 2021); blockade of
91 these proteins can effectively neutralise the virus in ACE2 non-overexpressing cells, suggesting NTD
92 and RBD may work cooperatively. The cooperativity of NTD and the RBD is additionally supported by
93 the identification of infectivity enhancing antibodies specifically targeting the NTD domain (Li et al.,
94 2021; Liu et al., 2021), and the observation that binding of the 4A8 monoclonal antibody in the NTD
95 modulates the RBD into an up position (Chi et al., 2020; Díaz-Salinas et al., 2022). Interestingly such
96 antibody binding sites coincide with known infectivity enhancing sites, such as the H69V70 deletion
97 that emerged during an example of intra-host evolution (Kemp et al., 2021) and in Alpha (Meng et
98 al., 2021) and Omicron variants (Meng et al., 2022). It is therefore plausible that the NTD plays an
99 active role in virus entry by engaging with host cofactors and triggering conformational changes of
100 the RBD.

101 Despite over 20 mutations documented in the NTD, the role of those mutations in infectivity and
102 their impact on the immune response elicited by vaccines is less clear. We reported that the H69V70
103 deletion found in Alpha was positively selected to increase its infectivity with a modest decrease in
104 immune evasion (Meng et al., 2021). Here we hypothesised that the NTD plays a regulatory role that
105 impacts S1/S2 cleavage and ACE2 usage. We constructed a panel of chimeric spike proteins with NTD
106 from different VOCs in a variety of VOC backbones. We examined those chimeras alongside the
107 parental VOCs in pseudovirus based entry assays (Mlcochova et al., 2020) and investigated spike-
108 mediated fusogenicity. Our data are consistent with a model whereby the NTD regulates virus entry
109 and cell-cell fusion in a variant context-dependent manner.

110

111 Results

112 **NTD increases Delta infectivity in lung cells and airway organoids**

113 The most dramatic changes in spike between Kappa and Delta lie in the NTD. Both Kappa and Delta
114 spike are efficiently cleaved in the producer cells (Mlcochova et al., 2021). We sought to assess the
115 contribution of the NTD in spike cleavage in purified PV by western blot. We included a deletion
116 mutant in the NTD (delH69/V70) as a control due to its known efficient spike cleavage (Kemp et al.,

117 2021; Meng et al., 2021). Plasmids encoding HIV Gag/pol, a genome flanked by LTRs encoding
118 luciferase, as well as the corresponding spike were transfected into 293T producer cells. The
119 supernatants were harvested and pelleted through ultracentrifugation for western blot analysis. Our
120 data show that the H69/V70 deletion increased S1/S2 cleavage compared to Wu-1 as expected
121 (Figure S1A). Kappa and Delta spike were efficiently cleaved with a more pronounced cleavage
122 observed in Delta (Figure S1B). We additionally observed that the Kappa spike was prone to S1
123 shedding evidenced by a higher S2/S1 ratio compared to that of the WT (Figure S1C). In contrast,
124 Delta spikes were more stable. We further noticed that the increased efficiency in spike cleavage
125 requires a cognate NTD as the spike bearing the RBD mutations alone failed to be cleaved efficiently
126 (Figure S1D), suggesting NTD on its own or together with the RBD influences the cleavage activity.
127 We conclude that the Delta spike has evolved to be optimal in efficient spike cleavage whilst
128 maintaining spike stability, reminiscent of the emergence of D614G in the early pandemic (Gobeil et
129 al., 2021; Yurkovetskiy et al., 2020; Zhang et al., 2021b, 2020).

130 We previously observed enhanced cell-free infectivity for Delta over Kappa in Calu3 cells in the PV
131 system (Mlcochova et al., 2021). Importantly this difference was also evident for airway organoids
132 (Mlcochova et al., 2021; Youk et al., 2020) suggesting that at endogenous expression levels of ACE2
133 and TMPRSS2, Delta has enhanced ability over Kappa in virus entry. Calu-3 and airway organoids
134 express high levels of TMPRSS2 (Meng et al., 2022). Given that cleavage efficiency positively
135 correlates with the infectivity in lung cells (Meng et al., 2022), we sought to examine whether the
136 Delta NTD also contributes to higher infectivity over Kappa in vitro.

137 To test this we constructed chimeras harboring either the Delta NTD or the Kappa NTD in Delta or
138 Kappa backbones (Figure 1A). We then used the PV bearing different spikes to transduce cell lines to
139 examine the entry efficiency. Interestingly we observed elevated cell-free infectivity in a Kappa
140 chimera bearing the Delta NTD in Calu3 cells and primary human airway organoids but not in other
141 cell lines, indicating that the NTD confers the specificity for this increase (Figure 1B). Consistent with
142 this model, a decrease in infectivity in Calu3 cells and primary human airway organoids was
143 observed when the Kappa NTD was exchanged with that of Delta. We further extended this
144 observation to the WT backbone where a hybrid WT spike bearing either Kappa or Delta NTD was
145 expressed (Figure 1C and S2). Consistent with these observations, both Kappa and Delta NTD when
146 fused with WT increased cell-free infectivity in Calu3 lung cells.

147 **The NTD influences virus entry efficiency**

148 We next sought to delineate the underlying mechanism for this increased infectivity in Delta over
149 Kappa. Spike cleavage correlates with SARS-CoV-2 virus entry pathway preference (Meng et al.,

150 2022; V'kovski et al., 2021). Western blots using the cell lysates from the 293T virus producer cells
151 showed that the expression levels of chimeric spikes were comparable (Figure 2A&B). However, the
152 cleavage of spike in the chimeras phenocopied the cleavage patterns from which their NTD were
153 derived (Figure 2C). We extended this observation in WT chimeras where increased spike cleavage
154 was also evident following addition of either Kappa NTD or Delta NTD (Figure S2B). Structural data
155 indicate that the NTD, RBD and PBCS are cooperatively regulated (Gobeil et al., 2021). Hence we
156 reasoned that the observed increase in the accessibility to the furin cleavage site may be regulated
157 by the allostery involving the NTD.

158 SARS-CoV-2 primarily enters Calu-3 cells through membrane fusion due to an abundant expression
159 of TMPRSS2 and ACE2 at the plasma membrane. The primary cleavage at S1/S2 is a prerequisite for a
160 secondary cleavage at S2' site by proteases such as TMPRSS2 at the plasma membrane (V'kovski et
161 al., 2021), triggering the conformational rearrangement of S2 for the exposure of the fusion peptide.
162 Due to more efficient cleavage of the Delta spike (Figure S1), we reasoned that the Delta spike may
163 be more efficiently primed to use TMPRSS2 at the plasma membrane for its entry. To test this
164 hypothesis, we transduced the virus bearing either authentic spike of Delta or Kappa or their NTD-
165 chimeric counterparts into TMPRSS2 overexpressing 293T cells or parental 293T cells (Figure 2D). As
166 expected, all the viruses including chimeras increased entry efficiency when TMPRSS2 was present
167 with an even more pronounced increase observed in Delta, consistent with the observation that
168 Delta is more efficient in utilising TMPRSS2. Intriguingly, we also observed an increased transduction
169 efficiency for the Kappa chimera that was comparable to that of Delta, suggesting that the Delta NTD
170 enables the entry of chimeric Kappa by efficient TMPRSS2 usage. Consistent with this model, the
171 ratio of entry for the Delta chimera containing Kappa NTD entry in TMPRSS2 overexpressing cells
172 versus normal expressing cells was reduced.

173
174 To further investigate the dependence of TMPRSS2 on virus entry, we pretreated A549-
175 ACE2/TMPRSS2 cells or airway organoids with either camostat (a TMPRSS2 inhibitor) or E64D (a
176 cathepsin inhibitor). We observed that the IC50 of camostat in Delta was approximately 2 fold higher
177 than Kappa, whilst E46D had little effect on either virus (Figure 2E). Reassuringly, a similar
178 observation was made in airway organoids (Figure 2F), suggesting that Delta is more resistant to
179 camostat and hence is more efficient in utilising available TMPRSS2 for virus entry. Indeed the Kappa
180 chimera bearing Delta NTD showed a similar drug sensitivity profile to Delta implying that the NTD is
181 accountable for this shift in TMPRSS2 sensitivity (Figure 3S).

182 It is reported that the NTD modulates RBD conformation through allosteric effects (Qing et al.,
183 2021). We speculated the accessibility to ACE2 is altered in the chimeric spikes. We next went on to

184 examine this by transducing parental 293T cells or their isogenic counterparts where the expression
185 of TMPRSS2 is abrogated and ACE2 is overexpressed (A2delT2). Indeed, we found a 30 fold increase
186 in Delta when ACE2 is overexpressed whereas Kappa only had 4 fold increase (Figure 4G). More
187 strikingly, the Kappa chimera, bearing the Delta NTD in the Kappa spike backbone, showed a similar
188 magnitude of increase as Delta. Conversely, the Delta chimera bearing a Kappa NTD manifested a
189 decrease in ACE2 dependence compared to Delta, albeit to a lesser extent. Taken together, our data
190 support the notion that the Delta NTD modulates the use of TMPRSS2 more efficiently due to spike
191 cleavage and that the Delta NTD allosterically regulates the RBD to increase efficiency of ACE2 usage.

192 **NTD mutations and deletions impact entry efficiency**

193 To probe the mutations in the Delta NTD that may contribute to the enhanced infectivity in Calu3
194 cells, we constructed a series of spike bearing PV by reverting a cluster of amino acids (142D, 156G,
195 del157F and del158R) to WT Wuhan-1 residues individually. Interestingly, each individually reverted
196 mutant showed a decrease in infectivity in Calu3 cells with the greatest reduction seen following re-
197 insertion of the deleted 157R/158R (3 fold). This is in agreement with the infectivity reduction in the
198 Delta NTD bearing Kappa chimera (Figure 1B). The decrease in infectivity was only observed in Calu3
199 cells but not in HeLa-ACE2 cells, consistent with the cell specificity in virus entry conferred by the
200 NTD. Since the NTD harbors the antigenic supersites that are mutated in Delta (Cerutti et al., 2021;
201 McCallum et al., 2021b; McCarthy et al., 2021; Suryadevara et al., 2021), we predicted that the
202 reversion of such mutations would at least partially rescue the loss of sensitivity to the vaccine sera.
203 To test this, PV were harvested and used to transduce HeLa-ACE2 cells in the presence of a dilution
204 series of vaccine sera from vaccinees who had received two doses of BNT162b2 at least 1 month
205 prior to sampling. D142G alone did not alter the sensitivity of neutralisation (Figure 3). However,
206 G156E or repairing the deletion of 157F/158R increased the sensitivity of neutralization by 2 fold,
207 consistent with the notion that the NTD is important for immune evasion and infectivity.

208 **Delta NTD confers faster cell-cell fusion kinetics in a context-dependent manner**

209 Syncytium formation, mediated by spike and the host receptor ACE2, has been found in SARS-CoV-2
210 infected patients and is thought to be important for disease progression (Braga et al., 2021). We and
211 others had previously demonstrated that variants bearing furin cleavage site mutations exhibit a
212 pronounced increase in fusogenicity, with the exceptions of Omicron (Figure 4A) (Buchrieser et al.,
213 2021; Meng et al., 2021, 2022; Mlcochova et al., 2021; Rajah et al., 2021). Given that spike cleavage
214 largely correlates with fusion and we observed an enhanced cleavage in the Kappa chimera, we
215 sought to examine whether spike mediated fusion is altered. We first confirmed that efficient
216 cleavage is required for the syncytia formation as the mutants bearing the WT proline at position

217 681 (681P) decreased fusion efficiency in both parental and chimeras whereas the mutation to
218 histidine (681H), the other cleavage site mutation firstly found in Alpha and then in Omicron, did not
219 (Figure 4B). We then went on to explore whether or not the fusogenicity is different between Delta
220 and Kappa and their chimeras. Concordant with the published studies we found a marked increase in
221 fusion for Delta and Kappa compared to WT (Figure 4C) (Mlcochova et al., 2021; Rajah et al., 2021).
222 Unexpectedly, we found the fusion kinetics between Delta and Kappa were noticeably different
223 despite manifesting a comparably maximal fusion activity at the steady-state (around 70%; Figure
224 3C). More specifically, Delta was more fusogenic at earlier time points whereas Kappa required two
225 more hours to reach a similar intensity. Intriguingly when the Kappa NTD was fused into Delta the
226 fusion phenotype shifted from Delta to Kappa, with a slowing of kinetics (Figure 3C). Conversely, we
227 observed a fast-fusing Delta phenotype when the Delta NTD was swapped into Kappa. Of note, we
228 also observed a faster fusion phenotype when the Delta NTD was fused into the WT backbone,
229 though this effect was less pronounced compared to that observed in the Kappa chimera (Figure 4C).
230 Taken together we have demonstrated that the Delta NTD can drive faster fusion in both WT and
231 Kappa spike backgrounds.

232 Epidemiological studies suggest that the more recent Omicron (BA.1 and BA.2) variants are distantly
233 related to all the other early pandemic variants (Simon-Loriere and Schwartz, 2022). It therefore
234 remains possible that the ability of the Delta NTD to drive faster fusion is dependent on their spike
235 background. We found that in comparison to BA.1 BA.2 was more efficient in entering Calu3 cells,
236 though still not as efficient as Delta (Figure 5A). An elevated level of entry of BA.2 over BA.1 was
237 observed in H1299 cells where the entry of Delta was the least efficient. These data suggest that
238 BA.2 is capable of infecting both TMPRSS2 low (H1299) and high (Calu3) cells efficiently.

239 We then introduced the Delta NTD into the both BA.1 and BA.2 to examine whether the Delta NTD
240 could also confer increased fusion to Omicron, a known poor cell-cell fusion spike (Figure 5B).
241 Although BA.2 showed faster fusion than BA.1, consistent with a recently published study (Yamasoba
242 et al., 2022), both Omicron and the Delta-NTD fused Omicron chimeras showed poor spike-mediated
243 fusion and that most importantly the difference between Omicron and its counterpart was
244 negligible. Intriguingly, this phenotype correlates with inefficient cleavage of spike even after the
245 cleavage-enhancing Delta NTD was fused into an Omicron spike background.

246 Omicron has evolved to avoid the early entry route via TMPRSS2 at the plasma membrane by
247 entering the cells through endosomal route (Meng et al., 2022). Given spike cleavage was not
248 affected by domain swapping, we predicted that the Omicron chimera bearing the Delta NTD would
249 fail to confer increased sensitivity to TMPRSS2, in contrast to our findings for the B.1.617 lineages

250 Delta and Kappa. Indeed there was only a moderate increase in entry (2-3 fold) when TMPRSS2 was
251 overexpressed, compared to 9 fold for Delta, reinforcing the notion that the virus entry of Omicron
252 is TMPRSS2 independent and that altering the NTD is not sufficient to confer TMPRSS2 usage to
253 Omicron.

254 We next sought to examine whether the BA.2 NTD could rescue the poor fusogenicity of BA.1 and/or
255 whether the BA.1 NTD impaired the fusogenicity of BA.2. In contrast to the fast fusion activity
256 conferred by the Delta NTD in Kappa or WT (Figure 4C), BA.2 NTD failed to increase the fusion
257 kinetics of the BA.1 chimeric spike bearing BA.2 NTD (Figure 5D). The BA.1 NTD modestly
258 suppressed the fusion of BA.2 chimeric spike bearing BA.1 NTD. Interestingly, when the sensitivity to
259 TMPRSS2 was probed (Figure 5E), we found little difference between BA.1 and BA.2 and their
260 chimeras (8-10 fold) in comparison to Delta (over 50 fold), indicating that in Omicron the NTD on its
261 own is not sufficient to affect TMPRSS2 utilisation. Taken together, these data strongly suggest that
262 the enhanced fusogenicity of the Delta NTD and the spike cleavage is context-dependent and that
263 non-NTD regions may be involved to suppress efficient fusion activity of Omicron spike.

264

265 Discussion

266 Cooperativity between the NTD and RBD is reflected by the finding that NTD deletions were
267 previously discovered after the emergence of the RBD mutations; for example, N439K and Y453F
268 neutralising antibody escape mutations were identified first before the acquisition of delH69/V70 in
269 the NTD (Meng et al., 2021). We previously showed that some escape mutations reduced virus entry
270 efficiency and the delH69/V70 NTD deletion restored entry whilst maintaining immune evasion
271 (Kemp et al., 2021; Meng et al., 2021). Therefore, viruses have selected various mutations in the RBD
272 due to the immune pressure imposed on this immunodominant site by the host. However these
273 RBD-mutated viruses have suboptimal fitness, thus placing selection pressure to acquire
274 compensatory mutations in the NTD. We propose that NTDs in VOC have evolved under such
275 pressure.

276 The NTD has been proposed to modulate the RBD to a receptor accessible mode (Qing et al., 2021).
277 We speculated that by alternating the NTD of Delta into Kappa the receptor engagement with ACE2
278 is affected. Indeed we observed an enhanced virus entry in the Kappa chimera bearing the Delta
279 NTD (Figure 2G). However an increased accessibility to ACE2 cannot solely account for the enhanced
280 infectivity observed in Calu3 as such an increase is not evident for the cell lines where ACE2 is also
281 abundantly expressed. A marked increase for chimeric Kappa spike to use TMPRSS2 at the plasma

282 membrane provides a plausible explanation for this specificity; the chimeric Kappa spike is as
283 efficient as Delta on TMPRSS2 usage (Figure 2D). This observation is in agreement with our inhibitor
284 experiment, whereby the addition of the TMPRSS2 protease inhibitor camostat has a more
285 pronounced inhibitory effect for Kappa than Delta (Figure 2E&F). However, the Delta NTD cannot
286 enhance the cleavage of Omicron spike nor its dependence on TMPRSS2 (Figure 5B&C), suggesting
287 that the presence of the Delta NTD is not the sole determinant of TMPRSS2 usage. Furthermore,
288 although allosteric conformational changes involving NTD and other regions may contribute to
289 phenotype, binding of the NTD to a secondary cofactor at the plasma membrane cannot be
290 completely excluded (McCallum et al., 2021b).

291 The NTD of VOCs, including poorly fusogenic Omicron (Meng et al., 2022; Suzuki et al., 2022), once
292 fused with WT exhibits an increased fusion in the presence of trypsin indicating the accessibility of
293 spike cleavage by host protease is affected through the allostery of the NTD (Qing et al., 2022). We
294 have proposed that the sensitivity to TMPRSS2 correlates with cleavage status at S1/S2, which has
295 an additional impact on the cell to cell fusion (Meng et al., 2022). Consistent with this notion, we
296 found the Delta NTD confers faster fusion kinetics in both WT and Kappa which coincides with an
297 elevated S1/S2 cleavage in WT and Kappa spike bearing the Delta NTD. However S1/S2 cleavage is
298 unaltered in the Delta NTD bearing Omicron which also has poor fusogenicity. These data
299 demonstrated that regions other than NTD may also be required for efficient cleavage. Indeed a
300 recent study using a domain swapping approach has suggested the RBD of Omicron contributes to
301 inefficient spike cleavage and inferior fusogenicity (doi.org/10.1101/2022.04.03.486864). The
302 specific site in S2 preceding to fusion peptide has also been implicated in facilitating an efficient
303 cleavage in accordance with the NTD (Qing et al., 2022).

304 We observed that the Kappa spike is less stable than that of Delta (Figure S1C). We suspect that
305 when Delta first emerged with the RBD mutations the intermediate strain was less fit leading to a
306 premature S1 shedding. However, the subsequently acquired mutations in the NTD allosterically
307 foster non-covalent interactions between S1 and S2 forming more stabilised protomers before
308 engagement with ACE2. This process ultimately leads to active S1 shedding and exposure of the
309 fusion peptide. D614G emerged as a positively selected mutation in an early stage of the pandemic
310 persisting in subsequent lineages by stabilising trimeric spike. The more stable form of S1 is
311 therefore better positioned to engage with ACE2 (Daniloski et al., 2021; Díaz-Salinas et al., 2022;
312 Yurkovetskiy et al., 2020; Zhang et al., 2021b, 2020). It is reasonable to speculate that the effect of
313 the NTD mutations is analogous to the acquisition of D614G by strengthening the intramolecular
314 interactions to prevent S1 from being loosened prematurely while bolstering the RBD in an ACE2-
315 accessible form.

316 Finally we showed that Delta NTD revertant mutations (G156E and 157F/158R repair) were able to
317 compromise cell entry and increase sensitivity to neutralisation by vaccine sera. Reassuringly, a
318 similar finding was recently reported in breakthrough B.1.617 viruses where the same mutations in
319 the NTD accounted for the attenuated neutralisation sensitivity (Mishra et al., 2022).

320 In summary, our data support the cooperativity between NTD, RBD and the furin cleavage site. We
321 propose that the NTD allosterically affects the conformation of the RBD for ACE2 binding and the
322 furin cleavage site for spike cleavage. The pre-cleaved spike confers specificity on virus entry via
323 TMPRSS2 usage and drives a faster virus spread with more efficient spike-mediated fusion. Our
324 model explains the dominance of Delta over Kappa by being highly immune evasive on the one hand
325 through the acquisition of known escape mutations, while on the other hand gaining S1/S2 stability
326 and increased infectivity in lung cells. Our study highlights the importance of the continuous effort in
327 monitoring both RBD and NTD mutations in order to understand the biology of variants, and possibly
328 explains the lack of highly fit and successful SARS-CoV-2 inter-variant recombinants bearing
329 breakpoints within spike. On the translational/therapeutic side, combination antibody therapy
330 targeting both NTD and RBD might therefore be less prone to resistance than monotherapy or
331 combinations targeting the RBD alone.

332

333 **Acknowledgments**

334 RKG is supported by a Wellcome Trust Senior Fellowship in Clinical Science (WT108082AIA). This
335 study was supported by the Cambridge NIHR Biomedical Research Centre, Addenbrooke's
336 Charitable Trust and the Rosetrees Trust. We would like to thank Paul Lehner for Calu-3, James Voss
337 for HeLa ACE2, Simon Cook for H1299 and Suzanne Rihn for the A549 cells. We are grateful to Leo
338 James for 293T-ACE2-ΔTMPRSS2, 293T-TMPRSS2, Vero-GFP1-10 and 293T-GFP11 cells and to Guido
339 Papa and Anna Albecka for the help on imaging. The authors acknowledge plasmids from the G2P-
340 UK National Virology consortium funded by MRC/UKRI (grant ref: MR/W005611/1), and thank Tom
341 Peacock and Wendy Barclay. The views expressed are those of the author(s) and not necessarily
342 those of the NIHR.

343

344 **Competing interest statement:**

345 RKG has received honoraria for educational sessions for ViiV, Moderna, GSK and Janssen.

346

347 **Additional information:**

348 Requests for materials, raw data and correspondence should be addressed to Ravindra [Gupta email:](mailto:rkg20@cam.ac.uk)
349 rkg20@cam.ac.uk

350

351 **Author contributions**

352 Conceived research and designed study: R.K.G., B.M, K.G.C.S., J.B. designed experiments: H.Y.L;
353 conducted experiments: B.M, J.C, R.D; B.M, R.K.G wrote the manuscript with input from all authors.

354

355 **Methods**

356 **Cells and plasmids**

357 Calu-3 (a human lung epithelial cell line; a gift from Paul Lehner) cells were maintained in Eagle's
358 minimum essential medium containing 10% FBS and 1% PS. Vero-ACE2/TMPRSS2 cells (a gift from
359 Emma Thomson), Hela-ACE2 (a gift from James Voss) and A549-ACE2/TMPRSS2 (a gift from Massimo
360 Palmarini) were maintained in Dulbecco's modified Eagle's medium (DMEM) containing 10% FBS and
361 1% PS. 293T (CRL-3216) and its derivative cell lines including 293TACE2ΔTMPRSS2, 293T-TMPRSS2
362 and 293T-GFP11 have been described previously (Papa et al., 2021). All the 293T cell lines as well as
363 Vero-GFP1-10 were maintained in DMEM with 10% FBS and 1% PS. All cells were regularly tested
364 and are mycoplasma free. Airway epithelial organoids were obtained and maintained as previously
365 described (Meng et al., 2022; Youk et al., 2020). Human distal lung parenchymal tissues were
366 obtained from adult donors with no background lung pathologies from Papworth Hospital Research
367 Tissue Bank (T02233). Airway organoids were cultured in 48-well plate and were passaged every 2
368 weeks as previously reported (Meng et al., 2022).

369

370 pCDNA_SARS_CoV2_D416G_S WT, Delta, Kappa, Omicron BA.1 and Omicron BA.2 plasmids with 19
371 amino acid deletion at the C-terminus were generated by gene synthesis. For the construction of the
372 chimeras, the region encompassing the NTD was digested with Bsu36I and HindIII (both NEB) before
373 being gel purified and ligated back to the respective backbone that was cut with the same pair of
374 restriction enzymes. Amino acid substitutions in the Delta NTD (D142G, G156E and repair of 157F
375 and 158R) were introduced into the pCDNA_SARS-CoV-2_D614G_Delta_S plasmid using the
376 QuikChange Lightning Site-Directed Mutagenesis kit, following the manufacturer's instructions
377 (Agilent Technologies). Sequences were checked by Sanger sequencing.

378

379 **Pseudotype virus preparation and infectivity titration**

380 Plasmids encoding the spike protein of SARS-CoV-2_D614G with a C terminal 19 amino acid
381 deletion were used. Viral vectors were prepared by transfection of 293T cells by using Fugene HD
382 transfection reagent (Promega) as described previously (Kemp et al., 2021). In brief, 293T cells were
383 transfected with a mixture of 11ul of Fugene HD, 1µg of pCDNAΔ19 spike, 1ug of p8.91 HIV-1 gag-pol
384 expression vector and 1.5µg of pCSFLW (expressing the firefly luciferase reporter gene with the HIV-
385 1 packaging signal). Viral supernatant was collected at 48 h after transfection, filtered through
386 0.45µm filter and stored at -80°C. Infectivity was measured by luciferase detection (Bright Glo;

387 Promega) in target cells. The raw readings (in relative light unit (RLU)) were then normalised with the
388 SG-PERT and plotted using GraphPad Prism.

389

390

391 **PV SG-PERT**

392 The SARS-CoV2 spike-pseudotyped viruses containing supernatants were standardised using a SYBR
393 Green-based product-enhanced PCR assay (SG-PERT) as described previously (Pizzato et al., 2009).
394 Briefly, 10-fold dilutions of virus supernatant were lysed in a 1:1 ratio in a 2x lysis solution (made up
395 of 40% glycerol v/v 0.25% Triton X-100 v/v 100mM KCl, RNase inhibitor 0.8 U/ml, TrisHCL 100mM,
396 buffered to pH7.4) for 10 minutes at room temperature. Sample lysates (12 µl) were added to 13 µl
397 of SYBR Green master mix (containing 0.5µM of MS2-RNA Fwd and Rev primers, 3.5pmol/ml of MS2-
398 RNA, and 0.125U/µl of Ribolock RNase inhibitor and cycled in a QuantStudio (Thermofisher).
399 Relative amounts of reverse transcriptase activity were determined as the rate of transcription of
400 bacteriophage MS2 RNA, with absolute RT activity calculated by comparing the relative
401 amounts of RT to an RT standard of known activity.

402

403 **Western blot**

404 For cell lysates, 293 cells were washed and lysed in lysis buffer (Cell Signalling)
405 and lysates were diluted with 4 × sample buffer (Biorad) and boiled for 10 m before
406 subjected to western blotting. For virion purification, clarified supernatants were loaded onto a thin
407 layer of 8.4% optiprep density gradient medium (Sigma-Aldrich) and placed in a TLA55 rotor
408 (Beckman Coulter) for ultracentrifugation for 2 hours at 20,000 rpm. The pellet was then
409 resuspended for western blotting. For protein detection, the following antibodies were used:
410 rabbit anti-SARS-CoV-2 S monoclonal antibody (PA1-41165; Thermofisher), mouse anti-
411 SARS-CoV-2 S1 (MAB105403, R&D systems), rabbit anti-GAPDH polyclonal antibody (10494-1-AP;
412 Proteintech), horseradish peroxidase (HRP)-conjugated anti-rabbit and anti-mouse IgG polyclonal
413 antibody (Cell Signalling). Chemiluminescence was detected using ChemiDoc Touch Imaging System
414 (Bio-Rad). The cleavage ratio of S1 or S2 to FL in virions was determined by densitometry using
415 ImageJ (NIH).

416

417 **Drug assay**

418 A549-ACE2-TMPRSS2 (A549-A2T2) cells or human airway organoids were either E64D (Tocris) or
419 camostat (Sigma-Aldrich) treated for 2 hours at each drug concentration before the addition of a
420 comparable amount of input viruses pseudotyped with Delta, Kappa or chimeras (approx. 100,000
421 RLU). The cells were then left for 48 hours before the addition of substrate for luciferase
422 (Promega) and read on a Glomax plate reader (Promega). The RLU was normalised against the no-
423 drug control which was set as 100%.

424

425 **Cell-cell fusion assay**

426 Cell-cell fusion assays were described previously (Meng et al., 2022). Briefly, 293T GFP11 and Vero-
427 GFP1-10 cells were seeded at 80% confluence in a 1:1 ratio in 48 multiwell plate the day before.
428 Cells were co-transfected with 250 ng of spike expression plasmids using Fugene
429 6 following the manufacturer's instructions (Promega). Cell-cell fusion was measured using
430 an Incucyte and determined as the proportion of green area to total phase area over time. Data
431 were normalised to non-transfected control. Graphs were generated using Prism 9 software.

432

433 **Neutralisation assay**

434 This was performed as previously described (Collier et al., 2021b, 2021a).

435

436 References

- 437 Barton, M.I., MacGowan, S.A., Kutuzov, M.A., Dushek, O., Barton, G.J., and van der Merwe, P.A.
438 (2021). Effects of common mutations in the SARS-CoV-2 Spike RBD and its ligand, the human ACE2
439 receptor on binding affinity and kinetics. *Elife* 10. <https://doi.org/10.7554/eLife.70658>.
- 440 Braga, L., Ali, H., Secco, I., Chiavacci, E., Neves, G., Goldhill, D., Penn, R., Jimenez-Guardeño, J.M.,
441 Ortega-Prieto, A.M., Bussani, R., et al. (2021). Drugs that inhibit TMEM16 proteins block SARS-CoV-2
442 spike-induced syncytia. *Nature* 594, 88–93. <https://doi.org/10.1038/s41586-021-03491-6>.
- 443 Buchrieser, J., Dufloo, J., Hubert, M., Monel, B., Planas, D., Rajah, M.M., Planchais, C., Porrot, F.,
444 Guivel-Benhassine, F., van der Werf, S., et al. (2021). Syncytia formation by SARS-CoV-2-infected
445 cells. *The EMBO Journal* 40. <https://doi.org/10.15252/embj.2020107405>.
- 446 Cerutti, G., Guo, Y., Zhou, T., Gorman, J., Lee, M., Rapp, M., Reddem, E.R., Yu, J., Bahna, F., Bimela, J.,
447 et al. (2021). Potent SARS-CoV-2 neutralizing antibodies directed against spike N-terminal domain
448 target a single supersite. *Cell Host & Microbe* 29, 819–833.e7.
449 <https://doi.org/10.1016/j.chom.2021.03.005>.
- 450 Chi, X., Yan, R., Zhang, J., Zhang, G., Zhang, Y., Hao, M., Zhang, Z., Fan, P., Dong, Y., Yang, Y., et al.
451 (2020). A neutralizing human antibody binds to the N-terminal domain of the Spike protein of SARS-
452 CoV-2. *Science* (1979) 369, 650–655. <https://doi.org/10.1126/science.abc6952>.
- 453 Collier, D.A., de Marco, A., Ferreira, I.A.T.M., Meng, B., Datir, R.P., Walls, A.C., Kemp, S.A., Bassi, J.,
454 Pinto, D., Silacci-Fregni, C., et al. (2021a). Sensitivity of SARS-CoV-2 B.1.1.7 to mRNA vaccine-elicited
455 antibodies. *Nature* 593, 136–141. <https://doi.org/10.1038/s41586-021-03412-7>.
- 456 Collier, D.A., Ferreira, I.A.T.M., Kotagiri, P., Datir, R.P., Lim, E.Y., Touizer, E., Meng, B., Abdullahi, A.,
457 Baker, S., Dougan, G., et al. (2021b). Age-related immune response heterogeneity to SARS-CoV-2
458 vaccine BNT162b2. *Nature* 596, 417–422. <https://doi.org/10.1038/s41586-021-03739-1>.
- 459 Daniloski, Z., Jordan, T.X., Ilmain, J.K., Guo, X., Bhabha, G., Tenover, B.R., and Sanjana, N.E. (2021).
460 The spike d614g mutation increases sars-cov-2 infection of multiple human cell types. *Elife* 10, 1–16.
461 <https://doi.org/10.7554/eLife.65365>.
- 462 Dhar, M.S., Marwal, R., VS, R., Ponnusamy, K., Jolly, B., Bhoyar, R.C., Sardana, V., Naushin, S.,
463 Rophina, M., Mellan, T.A., et al. (2021). Genomic characterization and epidemiology of an emerging
464 SARS-CoV-2 variant in Delhi, India. *Science* (1979) 374, 995–999.
465 <https://doi.org/10.1126/science.abj9932>.
- 466 Díaz-Salinas, M.A., Li, Q., Ejemel, M., Yurkovetskiy, L., Luban, J., Shen, K., Wang, Y., and Munro, J.B.
467 (2022). Conformational dynamics and allosteric modulation of the SARS-CoV-2 spike. *Elife* 11.
468 <https://doi.org/10.7554/eLife.75433>.
- 469 Ferreira, I.A.T.M., Kemp, S.A., Datir, R., Saito, A., Meng, B., Rakshit, P., Takaori-Kondo, A., Kosugi, Y.,
470 Uriu, K., Kimura, I., et al. (2021). SARS-CoV-2 B.1.617 Mutations L452R and E484Q Are Not
471 Synergistic for Antibody Evasion. *The Journal of Infectious Diseases*
472 <https://doi.org/10.1093/infdis/jiab368>.
- 473 Gobeil, S.M.-C., Janowska, K., McDowell, S., Mansouri, K., Parks, R., Manne, K., Stalls, V., Kopp, M.F.,
474 Henderson, R., Edwards, R.J., et al. (2021). D614G Mutation Alters SARS-CoV-2 Spike Conformation

- 475 and Enhances Protease Cleavage at the S1/S2 Junction. *Cell Reports* 34, 108630.
476 <https://doi.org/10.1016/j.celrep.2020.108630>.
- 477 Hoffmann, M., Kleine-Weber, H., and Pöhlmann, S. (2020a). A Multibasic Cleavage Site in the Spike
478 Protein of SARS-CoV-2 Is Essential for Infection of Human Lung Cells. *Molecular Cell* 78, 779-784.e5.
479 <https://doi.org/10.1016/j.molcel.2020.04.022>.
- 480 Hoffmann, M., Kleine-Weber, H., Schroeder, S., Krüger, N., Herrler, T., Erichsen, S., Schiergens, T.S.,
481 Herrler, G., Wu, N.-H., Nitsche, A., et al. (2020b). SARS-CoV-2 Cell Entry Depends on ACE2 and
482 TMPRSS2 and Is Blocked by a Clinically Proven Protease Inhibitor. *Cell* 181, 271-280.e8.
483 <https://doi.org/10.1016/j.cell.2020.02.052>.
- 484 Jackson, C.B., Farzan, M., Chen, B., and Choe, H. (2022). Mechanisms of SARS-CoV-2 entry into cells.
485 *Nature Reviews Molecular Cell Biology* 23, 3–20. <https://doi.org/10.1038/s41580-021-00418-x>.
- 486 Johnson, B.A., Xie, X., Bailey, A.L., Kalveram, B., Lokugamage, K.G., Muruato, A., Zou, J., Zhang, X.,
487 Juelich, T., Smith, J.K., et al. (2021). Loss of furin cleavage site attenuates SARS-CoV-2 pathogenesis.
488 *Nature* 591, 293–299. <https://doi.org/10.1038/s41586-021-03237-4>.
- 489 Kemp, S.A., Collier, D.A., Datir, R.P., Ferreira, I.A.T.M., Gayed, S., Jahun, A., Hosmillo, M., Rees-Spear,
490 C., Mlcochova, P., Lumb, I.U., et al. (2021). SARS-CoV-2 evolution during treatment of chronic
491 infection. *Nature* 592, 277–282. <https://doi.org/10.1038/s41586-021-03291-y>.
- 492 Lempp, F.A., Soriaga, L.B., Montiel-Ruiz, M., Benigni, F., Noack, J., Park, Y.-J., Bianchi, S., Walls, A.C.,
493 Bowen, J.E., Zhou, J., et al. (2021). Lectins enhance SARS-CoV-2 infection and influence neutralizing
494 antibodies. *Nature* 598, 342–347. <https://doi.org/10.1038/s41586-021-03925-1>.
- 495 Li, D., Edwards, R.J., Manne, K., Martinez, D.R., Schäfer, A., Alam, S.M., Wiehe, K., Lu, X., Parks, R.,
496 Sutherland, L.L., et al. (2021). In vitro and in vivo functions of SARS-CoV-2 infection-enhancing and
497 neutralizing antibodies. *Cell* 184, 4203-4219.e32. <https://doi.org/10.1016/j.cell.2021.06.021>.
- 498 Liu, Y., Soh, W.T., Kishikawa, J., Hirose, M., Nakayama, E.E., Li, S., Sasai, M., Suzuki, T., Tada, A.,
499 Arakawa, A., et al. (2021). An infectivity-enhancing site on the SARS-CoV-2 spike protein targeted by
500 antibodies. *Cell* 184, 3452-3466.e18. <https://doi.org/10.1016/j.cell.2021.05.032>.
- 501 Liu, Y., Liu, J., Plante, K.S., Plante, J.A., Xie, X., Zhang, X., Ku, Z., An, Z., Scharton, D., Schindewolf, C.,
502 et al. (2022). The N501Y spike substitution enhances SARS-CoV-2 infection and transmission. *Nature*
503 602, 294–299. <https://doi.org/10.1038/s41586-021-04245-0>.
- 504 McCallum, M., Walls, A.C., Sprouse, K.R., Bowen, J.E., Rosen, L.E., Dang, H. v., de Marco, A., Franko,
505 N., Tilles, S.W., Logue, J., et al. (2021a). Molecular basis of immune evasion by the Delta and Kappa
506 SARS-CoV-2 variants. *Science* (1979) 374, 1621–1626. <https://doi.org/10.1126/science.abl8506>.
- 507 McCallum, M., de Marco, A., Lempp, F.A., Tortorici, M.A., Pinto, D., Walls, A.C., Beltramello, M.,
508 Chen, A., Liu, Z., Zatta, F., et al. (2021b). N-terminal domain antigenic mapping reveals a site of
509 vulnerability for SARS-CoV-2. *Cell* 184, 2332-2347.e16. <https://doi.org/10.1016/j.cell.2021.03.028>.
- 510 McCarthy, K.R., Rennick, L.J., Nambulli, S., Robinson-McCarthy, L.R., Bain, W.G., Haidar, G., and
511 Duprex, W.P. (2021). Recurrent deletions in the SARS-CoV-2 spike glycoprotein drive antibody
512 escape. *Science* (1979) 371, 1139–1142. <https://doi.org/10.1126/science.abf6950>.
- 513 Meng, B., Kemp, S.A., Papa, G., Datir, R., Ferreira, I.A.T.M., Marelli, S., Harvey, W.T., Lytras, S.,
514 Mohamed, A., Gallo, G., et al. (2021). Recurrent emergence of SARS-CoV-2 spike deletion H69/V70

- 515 and its role in the Alpha variant B.1.1.7. *Cell Reports* 35.
516 <https://doi.org/10.1016/j.celrep.2021.109292>.
- 517 Meng, B., Abdullahi, A., Ferreira, I.A.T.M., Goonawardane, N., Saito, A., Kimura, I., Yamasoba, D.,
518 Gerber, P.P., Fatihi, S., Rathore, S., et al. (2022). Altered TMPRSS2 usage by SARS-CoV-2 Omicron
519 impacts infectivity and fusogenicity. *Nature* 603, 706–714. [https://doi.org/10.1038/s41586-022-](https://doi.org/10.1038/s41586-022-04474-x)
520 04474-x.
- 521 Mishra, T., Dalavi, R., Joshi, G., Kumar, A., Pandey, P., Shukla, S., Mishra, R.K., and Chande, A. (2022).
522 SARS-CoV-2 spike E156G/Δ157-158 mutations contribute to increased infectivity and immune
523 escape. *Life Science Alliance* 5, e202201415. <https://doi.org/10.26508/lsa.202201415>.
- 524 Mlcochova, P., Collier, D., Ritchie, A., Assennato, S.M., Hosmillo, M., Goel, N., Meng, B., Chatterjee,
525 K., Mendoza, V., Temperton, N., et al. (2020). Combined Point-of-Care Nucleic Acid and Antibody
526 Testing for SARS-CoV-2 following Emergence of D614G Spike Variant. *Cell Reports Medicine* 1,
527 100099. <https://doi.org/10.1016/j.xcrm.2020.100099>.
- 528 Mlcochova, P., Kemp, S., Dhar, M.S., Papa, G., Meng, B., Ferreira, I.A.T.M., Datir, R., Collier, D.A.,
529 Albecka, A., Singh, S., et al. (2021). SARS-CoV-2 B.1.617.2 Delta variant replication and immune
530 evasion. *Nature* <https://doi.org/10.1038/s41586-021-03944-y>.
- 531 Ou, T., Mou, H., Zhang, L., Ojha, A., Choe, H., and Farzan, M. (2021a). Hydroxychloroquine-mediated
532 inhibition of SARS-CoV-2 entry is attenuated by TMPRSS2. *PLOS Pathogens* 17, e1009212.
533 <https://doi.org/10.1371/journal.ppat.1009212>.
- 534 Ou, T., Mou, H., Zhang, L., Ojha, A., Choe, H., and Farzan, M. (2021b). Hydroxychloroquine-mediated
535 inhibition of SARS-CoV-2 entry is attenuated by TMPRSS2. *PLOS Pathogens* 17, e1009212.
536 <https://doi.org/10.1371/journal.ppat.1009212>.
- 537 Papa, G., Mallery, D.L., Albecka, A., Welch, L.G., Cattin-Ortolá, J., Luptak, J., Paul, D., McMahon, H.T.,
538 Goodfellow, I.G., Carter, A., et al. (2021). Furin cleavage of SARS-CoV-2 Spike promotes but is not
539 essential for infection and cell-cell fusion. *PLOS Pathogens* 17, e1009246.
540 <https://doi.org/10.1371/journal.ppat.1009246>.
- 541 Park, J.E., Li, K., Barlan, A., Fehr, A.R., Perlman, S., McCray, P.B., and Gallagher, T. (2016). Proteolytic
542 processing of middle east respiratory syndrome coronavirus spikes expands virus tropism. *Proc Natl*
543 *Acad Sci U S A* 113, 12262–12267. <https://doi.org/10.1073/pnas.1608147113>.
- 544 Peacock, T.P., Goldhill, D.H., Zhou, J., Baillon, L., Frise, R., Swann, O.C., Kugathasan, R., Penn, R.,
545 Brown, J.C., Sanchez-David, R.Y., et al. (2021). The furin cleavage site in the SARS-CoV-2 spike protein
546 is required for transmission in ferrets. *Nature Microbiology* 6, 899–909.
547 <https://doi.org/10.1038/s41564-021-00908-w>.
- 548 Peng, R., Wu, L.-A., Wang, Q., Qi, J., and Gao, G.F. (2021). Cell entry by SARS-CoV-2. *Trends in*
549 *Biochemical Sciences* 46, 848–860. <https://doi.org/10.1016/j.tibs.2021.06.001>.
- 550 Pizzato, M., Erlwein, O., Bonsall, D., Kaye, S., Muir, D., and McClure, M.O. (2009). A one-step SYBR
551 Green I-based product-enhanced reverse transcriptase assay for the quantitation of retroviruses in
552 cell culture supernatants. *Journal of Virological Methods* 156, 1–7.
553 <https://doi.org/10.1016/j.jviromet.2008.10.012>.

- 554 Qing, E., Kicmal, T., Kumar, B., Hawkins, G.M., Timm, E., Perlman, S., and Gallagher, T. (2021).
555 Dynamics of sars-cov-2 spike proteins in cell entry: Control elements in the amino-terminal domains.
556 *MBio* 12. <https://doi.org/10.1128/mBio.01590-21>.
- 557 Qing, E., Li, P., Cooper, L., Schulz, S., Jäck, H.-M., Rong, L., Perlman, S., and Gallagher, T. (2022). Inter-
558 domain communication in SARS-CoV-2 spike proteins controls protease-triggered cell entry. *Cell*
559 *Reports* 39, 110786. <https://doi.org/10.1016/j.celrep.2022.110786>.
- 560 Rajah, M.M., Hubert, M., Bishop, E., Saunders, N., Robinot, R., Grzelak, L., Planas, D., Dufloo, J.,
561 Gellenoncourt, S., Bongers, A., et al. (2021). SARS-CoV-2 Alpha, Beta, and Delta variants display
562 enhanced Spike-mediated syncytia formation. *The EMBO Journal* 40.
563 <https://doi.org/10.15252/emboj.2021108944>.
- 564 Ramanathan, M., Ferguson, I.D., Miao, W., and Khavari, P.A. (2021). SARS-CoV-2 B.1.1.7 and B.1.351
565 spike variants bind human ACE2 with increased affinity. *Lancet Infect Dis* 21, 1070.
566 [https://doi.org/10.1016/S1473-3099\(21\)00262-0](https://doi.org/10.1016/S1473-3099(21)00262-0).
- 567 Saville, J.W., Mannar, D., Zhu, X., Srivastava, S.S., Berezuk, A.M., Demers, J.-P., Zhou, S., Tuttle, K.S.,
568 Sekirov, I., Kim, A., et al. (2022). Structural and biochemical rationale for enhanced spike protein
569 fitness in delta and kappa SARS-CoV-2 variants. *Nature Communications* 13, 742.
570 <https://doi.org/10.1038/s41467-022-28324-6>.
- 571 Simon-Loriere, E., and Schwartz, O. (2022). Towards SARS-CoV-2 serotypes? *Nature Reviews*
572 *Microbiology* 20, 187–188. <https://doi.org/10.1038/s41579-022-00708-x>.
- 573 Supasa, P., Zhou, D., Dejnirattisai, W., Liu, C., Mentzer, A.J., Ginn, H.M., Zhao, Y., Duyvesteyn, H.M.E.,
574 Nutalai, R., Tuekprakhon, A., et al. (2021). Reduced neutralization of SARS-CoV-2 B.1.1.7 variant by
575 convalescent and vaccine sera. *Cell* 184, 2201-2211.e7. <https://doi.org/10.1016/j.cell.2021.02.033>.
- 576 Suryadevara, N., Shrihari, S., Gilchuk, P., VanBlargan, L.A., Binshtein, E., Zost, S.J., Nargi, R.S., Sutton,
577 R.E., Winkler, E.S., Chen, E.C., et al. (2021). Neutralizing and protective human monoclonal
578 antibodies recognizing the N-terminal domain of the SARS-CoV-2 spike protein. *Cell* 184, 2316-
579 2331.e15. <https://doi.org/10.1016/j.cell.2021.03.029>.
- 580 Suzuki, R., Yamasoba, D., Kimura, I., Wang, L., Kishimoto, M., Ito, J., Morioka, Y., Nao, N., Nasser, H.,
581 Uriu, K., et al. (2022). Attenuated fusogenicity and pathogenicity of SARS-CoV-2 Omicron variant.
582 *Nature* 603, 700–705. <https://doi.org/10.1038/s41586-022-04462-1>.
- 583 Ulrich, L., Halwe, N.J., Taddeo, A., Ebert, N., Schön, J., Devisme, C., Trüeb, B.S., Hoffmann, B., Wider,
584 M., Fan, X., et al. (2022). Enhanced fitness of SARS-CoV-2 variant of concern Alpha but not Beta.
585 *Nature* 602, 307–313. <https://doi.org/10.1038/s41586-021-04342-0>.
- 586 V'kovski, P., Kratzel, A., Steiner, S., Stalder, H., and Thiel, V. (2021). Coronavirus biology and
587 replication: implications for SARS-CoV-2. *Nature Reviews Microbiology* 19, 155–170.
588 <https://doi.org/10.1038/s41579-020-00468-6>.
- 589 Whittaker, G.R., Daniel, S., and Millet, J.K. (2021). Coronavirus entry: how we arrived at SARS-CoV-2.
590 *Current Opinion in Virology* 47, 113–120. <https://doi.org/10.1016/j.coviro.2021.02.006>.
- 591 Yamasoba, D., Kimura, I., Nasser, H., Morioka, Y., Nao, N., Ito, J., Uriu, K., Tsuda, M., Zahradnik, J.,
592 Shirakawa, K., et al. (2022). Virological characteristics of the SARS-CoV-2 Omicron BA.2 spike. *Cell*
593 <https://doi.org/10.1016/j.cell.2022.04.035>.

594 Youk, J., Kim, T., Evans, K. v., Jeong, Y.-I., Hur, Y., Hong, S.P., Kim, J.H., Yi, K., Kim, S.Y., Na, K.J., et al.
595 (2020). Three-Dimensional Human Alveolar Stem Cell Culture Models Reveal Infection Response to
596 SARS-CoV-2. *Cell Stem Cell* 27, 905-919.e10. <https://doi.org/10.1016/j.stem.2020.10.004>.

597 Yurkovetskiy, L., Wang, X., Pascal, K.E., Tomkins-Tinch, C., Nyalile, T.P., Wang, Y., Baum, A., Diehl,
598 W.E., Dauphin, A., Carbone, C., et al. (2020). Structural and Functional Analysis of the D614G SARS-
599 CoV-2 Spike Protein Variant. *Cell* 183, 739-751.e8. <https://doi.org/10.1016/j.cell.2020.09.032>.

600 Zhang, J., Xiao, T., Cai, Y., Lavine, C.L., Peng, H., Zhu, H., Anand, K., Tong, P., Gautam, A., Mayer, M.L.,
601 et al. (2021a). Membrane fusion and immune evasion by the spike protein of SARS-CoV-2 Delta
602 variant. *Science* (1979) 374, 1353–1360. <https://doi.org/10.1126/science.abl9463>.

603 Zhang, J., Cai, Y., Xiao, T., Lu, J., Peng, H., Sterling, S.M., Walsh, R.M., Rits-Volloch, S., Zhu, H.,
604 Woosley, A.N., et al. (2021b). Structural impact on SARS-CoV-2 spike protein by D614G substitution.
605 *Science* (1979) 372, 525–530. <https://doi.org/10.1126/science.abf2303>.

606 Zhang, L., Jackson, C.B., Mou, H., Ojha, A., Peng, H., Quinlan, B.D., Rangarajan, E.S., Pan, A.,
607 Vanderheiden, A., Suthar, M.S., et al. (2020). SARS-CoV-2 spike-protein D614G mutation increases
608 virion spike density and infectivity. *Nature Communications* 11. [https://doi.org/10.1038/s41467-](https://doi.org/10.1038/s41467-020-19808-4)
609 [020-19808-4](https://doi.org/10.1038/s41467-020-19808-4).

610

611

Figure 1

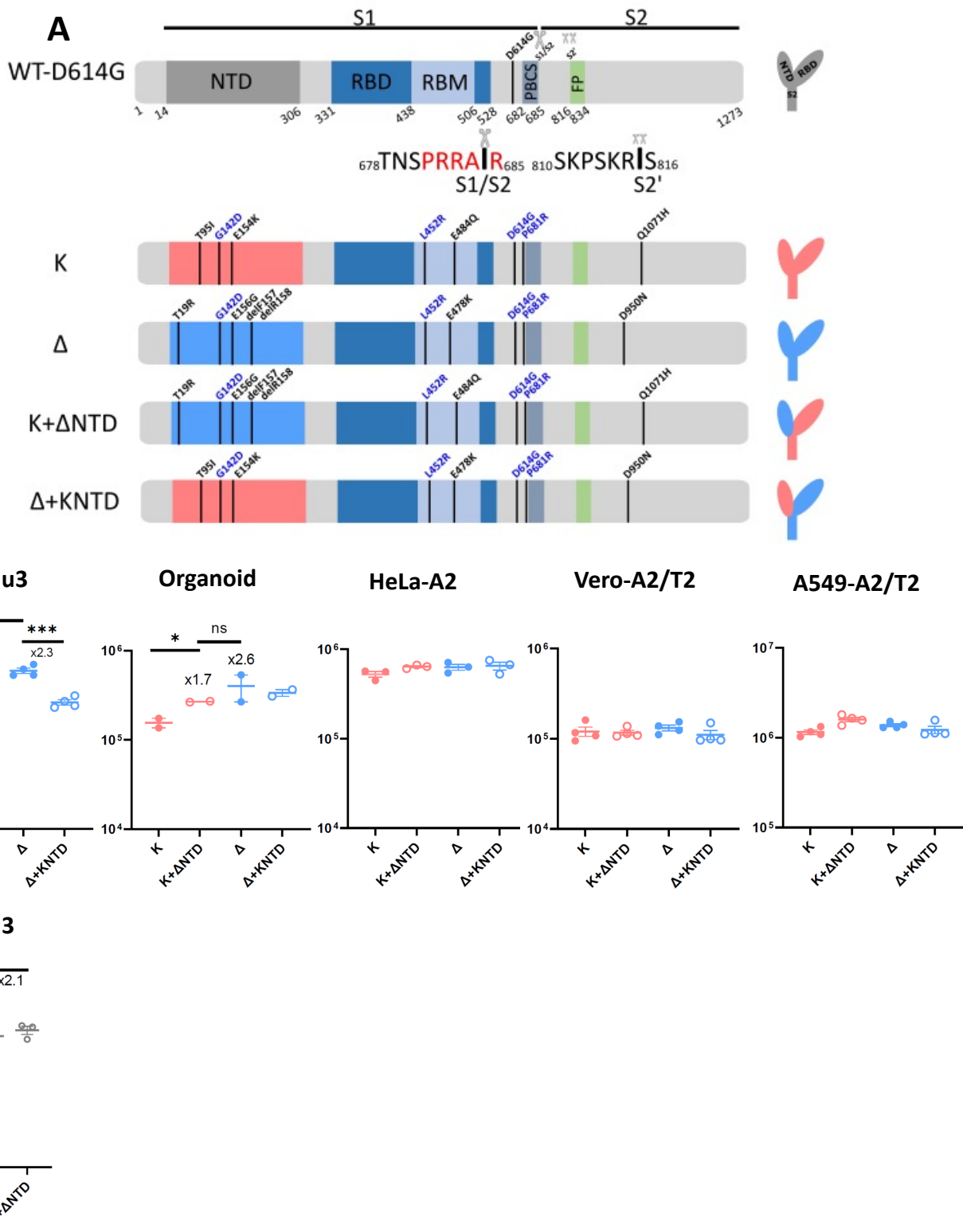
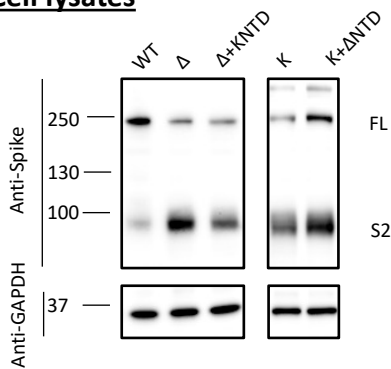


Figure 1: Delta exhibits increased infectivity over Kappa in Calu3 cells and is dependent on the NTD. (A): Schematic diagrams of WT, Kappa and Delta with their chimeras bearing swapped NTD. The consensus mutations between Kappa and Delta are annotated in blue. The monomeric spikes shown on the right-hand side are for illustration purposes. (B): PV bearing Delta or Kappa or chimeric spike was used to transduce Calu3 and organoids expressing endogenous levels of ACE2 and TMPRSS2 and ACE2/TMPRSS2 overexpressing cell lines including HeLa-ACE2, Vero-ACE2/TMPRSS2 and A549-ACE2/TMPRSS2. Unpaired t test. (C): WT, WT with KappaNTD and WT with DeltaNTD were used to transduce Calu3 cells. In B&C, mean +/- SEM are shown for technical replicates (n=2-4). Two-sided unpaired Student t test, ns: not significant, *p<0.05, **p<0.01, ***p<0.001, ****p<0.0001. Data are representative of at least two experiments.

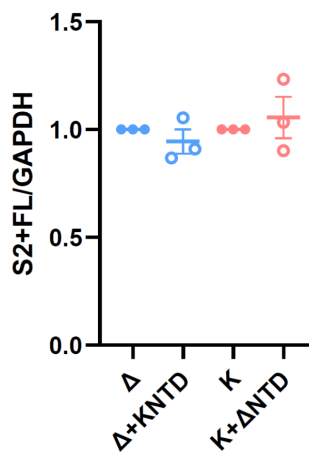
Figure 2

A

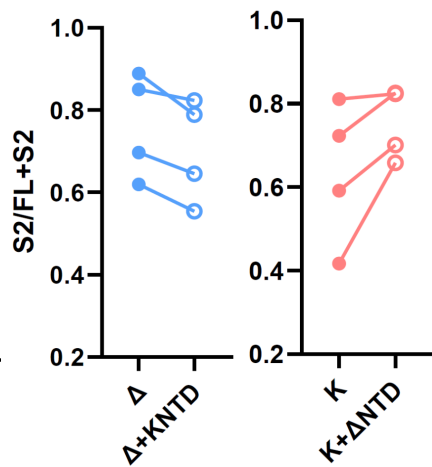
Cell lysates



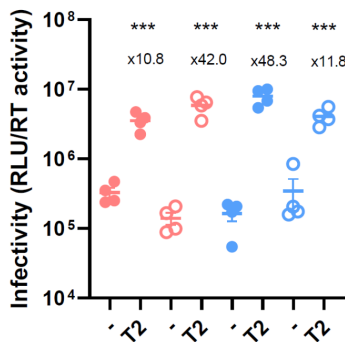
B



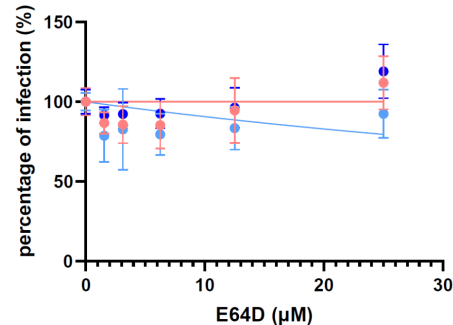
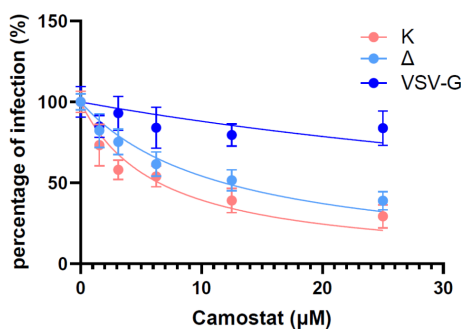
C



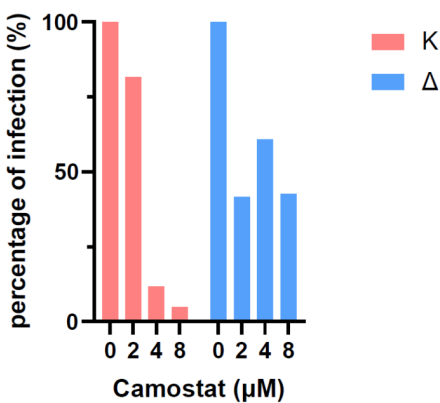
D



E



F



G

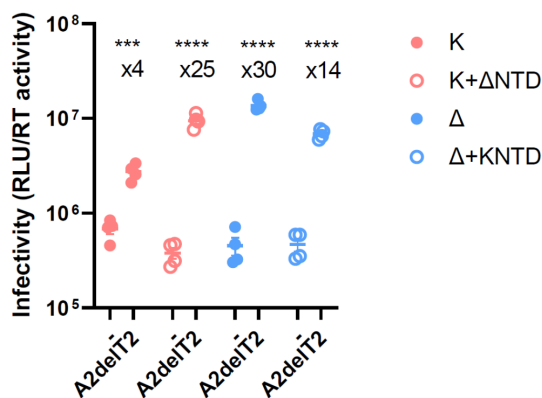


Figure 2: The NTD modulates the usage of TMPRSS2 and ACE2 for virus entry. (A): A representative western blot of cell lysates showing spike cleavage in Delta, Kappa and its chimeras. GAPDH was probed as a loading control. (B): The band intensity from (A) was densitometrically calculated using ImageJ. Total S2 associated spike proteins (S2 and FL) were then normalized against GAPDH across Delta, Kappa and NTD bearing chimeras. (C): The ratio of S2/FL+S2 from the band intensity of S2 and FL shown in (A) was plotted. $n \geq 3$. (D): Delta, Kappa or chimeras was transduced into either parental 293 cells or 293T cells overexpressing TMPRSS2. The fold increase of the virus entry in T2 overexpressing cells over parental cells is shown above the scatter plots. mean \pm SEM are shown for technical replicates ($n=4$). Two-sided unpaired Student t test, *** $p < 0.001$. Data are representative of two experiments. (E): The entry efficiency of Delta and Kappa in A549-ACE2/TMPRSS2 cells in the presence of TMPRSS2 specific inhibitor camostat or cathepsin specific inhibitor E64D. The lentivirus pseudotyped with VSV-G was used as a control. The RLU was normalized with non-drug added control giving a percentage of infection. The data showing the mean \pm SD from 4 experiments were plotted. (F): The entry efficiency of Delta and Kappa in the presence of camostat in airway organoids. Data are representative of two experiments. (G): Delta, Kappa or chimeras was transduced into either parental 293T cells or 293T cells overexpressing ACE2 with abrogated TMPRSS2 expression (A2delT2). The fold increase of the virus entry in A2delT2 overexpressing cells over parental cells is shown above the scatter plots. mean \pm SEM are shown for technical replicates ($n=4$). Two-sided unpaired Student t test, *** $p < 0.001$, **** $p < 0.0001$. Data are representative of two experiments.

Figure 3

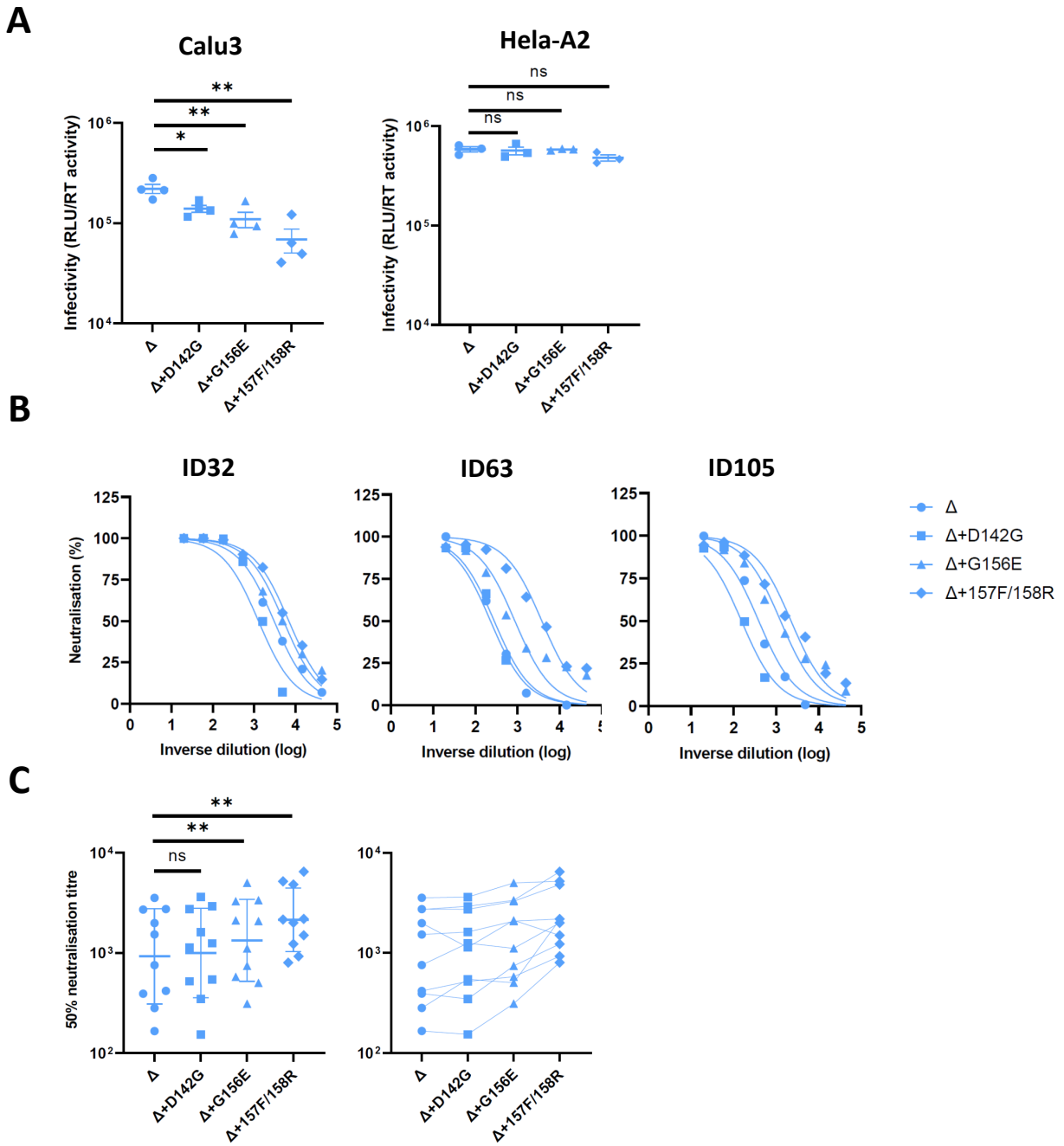


Figure 3: Reversing the mutations in the Delta NTD reduces the infectivity in lung cells and increases the neutralisation sensitivity to the vaccine-elicited antibody. (A): PV bearing Delta and its reversions were used to transduce Calu3 and Hela-ACE2 cells. mean +/- SEM are shown for technical replicates (n=4). Two-sided unpaired Student t test. Data are representative of two experiments. (B): Examples of neutralisation curves from ID32, 63 and 105 vaccinees with PVs bearing the reversion at 142, 156 or 157/8. (C): The 50% serum neutralisation was plotted across ten sera showing the geometric mean with geometric SD. Paired Wilcoxon was used for analysis. Data are representative of two experiments. ns: not significant, *p<0.05, **p<0.01.

Figure 4

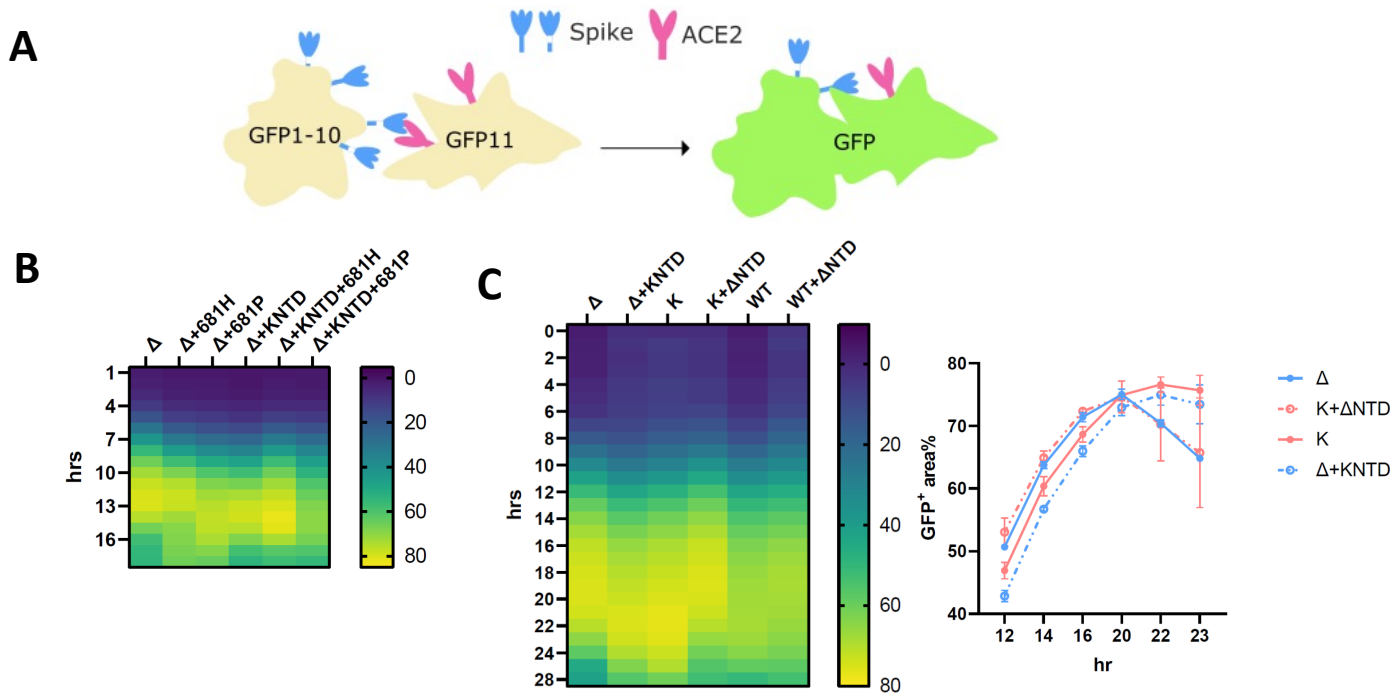


Figure 4: The SARS-CoV-2 Delta NTD increases the fusion kinetics of Kappa and WT spikes. (A): A schematic diagram showing the split GFP system for spike-ACE2 mediated cell fusion. (B): 681R or 681H is required for the enhanced fusogenicity in Delta and its chimera bearing Kappa NTD. (C): The fused Delta NTD in Kappa and WT increased the fusion kinetics of their counterparts, respectively. The line graphs on the right show the percentage of the positive GFP area at 12, 14, 16, 20, 22 and 23 hr post transfection. The data showing the SEM at each point were averaged from two experiments. The heatmap at each time point shows the mean of the GFP positive area over the field of view from two experiments.

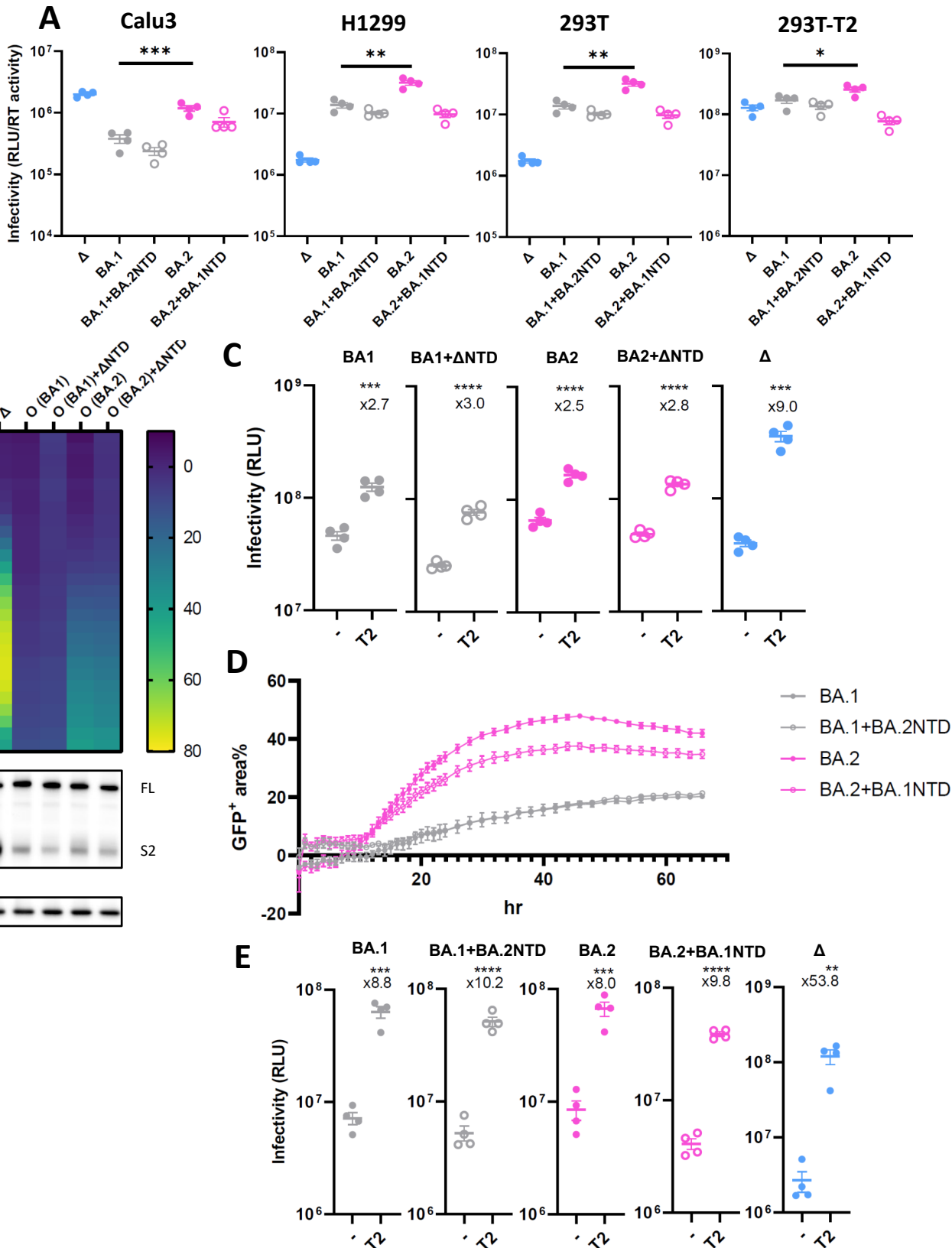
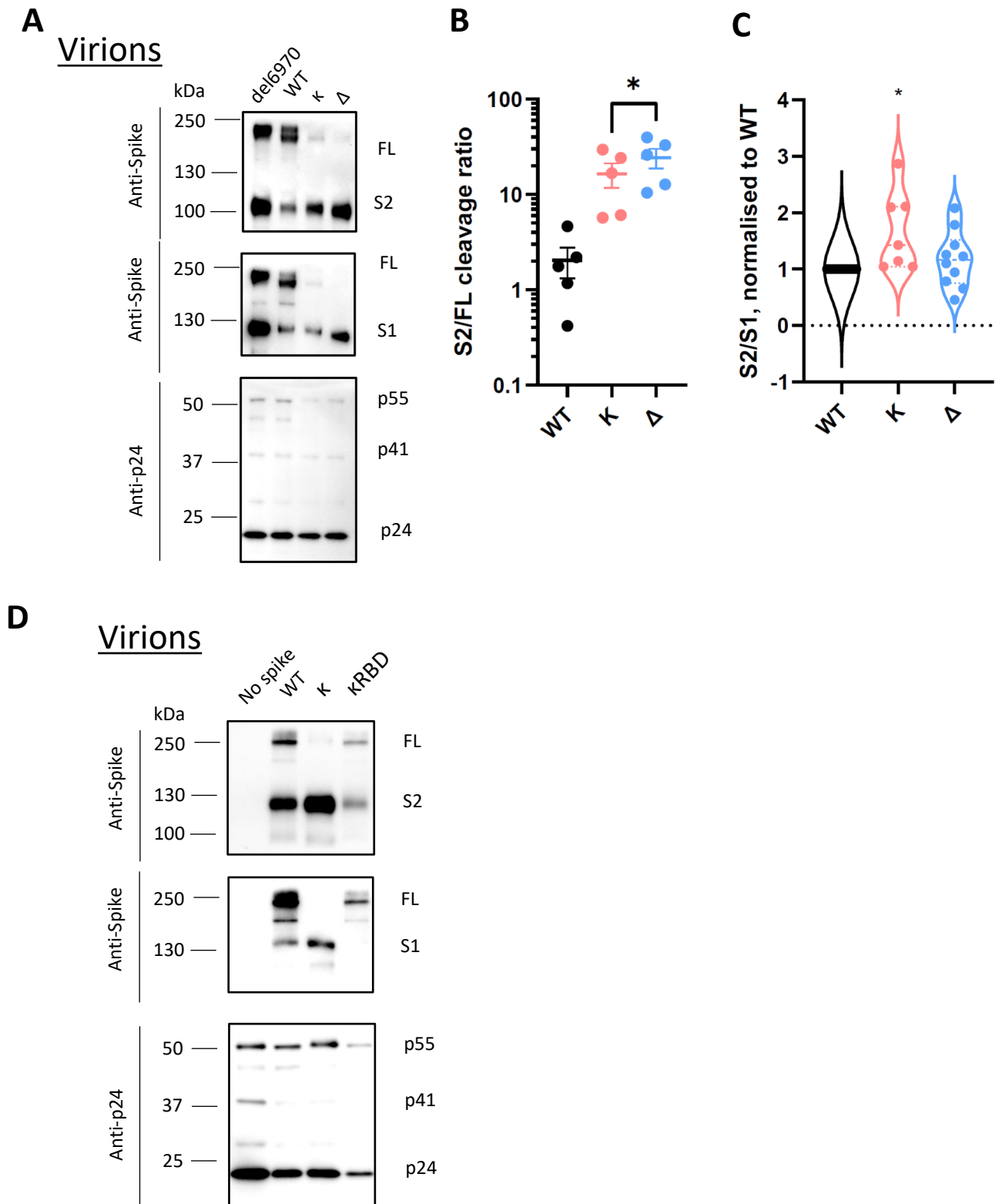
Figure 5

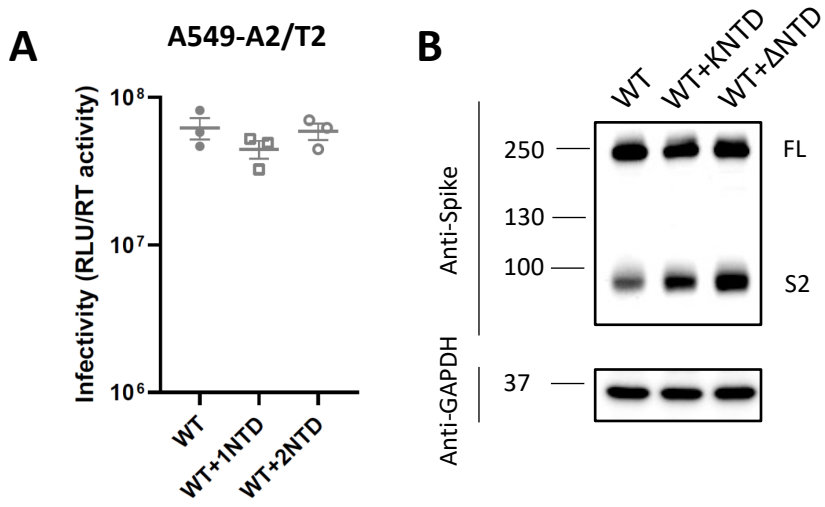
Figure 5: The SARS-CoV-2 Delta NTD or BA.2 NTD does not alter spike fusion or sensitivity to TMPRSS2 of BA.1. (A): PV bearing Delta, BA.1, BA.2 or chimeric forms of BA.1 and BA.2 spike were used to transduce Calu3, H1299 and 293T expressing endogenous levels of ACE2 and TMPRSS2 and TMPRSS2 overexpressing 293T cells. (B): The fusion kinetics of the fused Delta NTD in BA.1 and BA.2 along with their parental spikes. The western blot showing cleavage of spike is directly underneath the heatmap. (C): BA.1, BA.2 or chimeras with Delta were transduced into either parental 293 cells or 293T cells overexpressing TMPRSS2. The fold increase of the virus entry in TMPRSS2 overexpressing cells over parental cells is shown above the scatter plots. (D): The fusion assay of BA.1, BA.2 and their chimeric BA.1 bearing BA.2 NTD and BA.2 bearing BA.1 NTD. The line graphs show the percentage of the positive GFP area at 1 hr interval post transfection. The data showing the SEM at each point were averaged from two experiments. (E): BA.1, BA.2 or chimeras bearing BA.2 NTD or BA.1 NTD together with Delta were transduced into either parental 293 cells or 293T cells overexpressing TMPRSS2. The fold increase of the virus entry in T2 overexpressing cells over parental cells is shown above the scatter plots. In A, C&E, the plots are representative from two experiments. mean \pm SEM are shown for technical replicates ($n=4$). Two-sided unpaired Student t test, * $p<0.05$, ** $p<0.01$, *** $p<0.001$, **** $p<0.0001$.

Figure S1



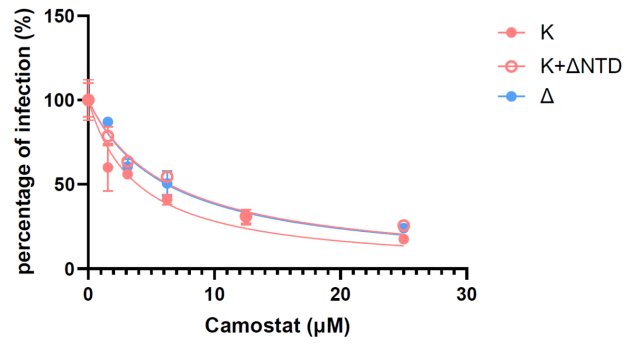
Supplementary Figure 1: The NTD is required for efficient cleavage of SARS-CoV-2 spike. (A): Western blots of purified PV bearing either H69V70 deletion, WT, Kappa or Delta spikes. The sizes of protein markers were labelled to the left of the blot and the corresponding bands were labelled to the right. (B): The intensity of the spike-associated bands on the western blots was densitometrically quantified (ImageJ) before the ratio was calculated for cleavage (S2/FL, paired t test.) (B) or spike stability (S1/S2; one sample t test) (C). In both (B) and (C) each dot represents one PV preparation. (D): A representative western blot of the purified PVs bearing RBD mutations only in Kappa and Kappa spike, together with WT and non-spike control. * $p < 0.05$.

Figure S2



Supplementary Figure 2: (A) The infectivity of WT, WT with Kappa NTD or Delta NTD chimeras in A549-A2/T2 cells (A) and western blot showing spike cleavage (B).

Figure S3



Supplementary Figure 3: The Delta NTD fused with Kappa increases camostat resistance to a similar level as Delta.