

Scale interactions in turbulent rotating planar Couette flow: insight through the Reynolds stress transport

Takuya Kawata^{1,†} and P. Henrik Alfredsson^{2,†}

¹Department of Mechanical Engineering, Tokyo University of Science, Yamazaki 2641, Noda, 278-8510 Chiba, Japan

²Linné Flow Centre, KTH Mechanics, Royal Institute of Technology, SE-100 44 Stockholm, Sweden

(Received 16 January 2019; revised 9 August 2019; accepted 11 August 2019;
first published online 26 September 2019)

In turbulent planar Couette flow under anticyclonic spanwise system rotation, large-scale roll-cell structures arise due to a Coriolis-force-induced instability. The structures are superimposed on smaller-scale turbulence, and with increasing angular velocity (Ω_z) such roll cells dominate the flow field and small-scale turbulence is instead suppressed in a certain rotation number range $0 < Ro \lesssim 0.1$ ($Ro = 2\Omega_z h/U_w$, where h is the channel half-width, U_w the wall velocity). At low rotation numbers around $Ro \approx 0.02$ both large-scale roll cells and smaller-scale turbulence coexist. In the present study, we investigate interaction between these structures through a scale-by-scale analysis of the Reynolds stress transport. We show that at low rotation numbers $Ro \approx 0.01$ the turbulence productions by the mean flow gradient and the Coriolis force occur at different scales and thereby the turbulent energy distribution over a wide range of scales is maintained. On the other hand at higher rotation numbers $Ro \gtrsim 0.05$, a zero-absolute-vorticity state is established and production of small scales from the mean shear disappears although large-scale turbulence production is maintained through the Coriolis force. At high enough Reynolds numbers, where scale separation between the near-wall structures and the roll cells is relatively distinct, transition between these different Ro regimes is found to occur rather abruptly around $Ro \approx 0.02$, resulting in a non-monotonic behaviour of the wall shear stress as a function of Ro . It is also shown that at such an intermediate rotation number the roll cells interact with smaller scales by moving near-wall structures towards the core region of the channel, by which the Reynolds stress is transported from relatively small scales near the wall towards larger scales in the channel centre. Such Reynolds stress transport by scale interaction becomes increasingly significant as the Reynolds number increases, and results in a reversed mean velocity gradient at the channel centre at high enough Reynolds numbers.

Key words: rotating turbulence, turbulent boundary layers

† Email addresses for correspondence: kawata@rs.tus.ac.jp, hal@mech.kth.se

1. Introduction

Nonlinear interaction between different scales is an important aspect of turbulence. The interscale interaction induces transport of turbulence both in physical and scale space. The role of such turbulent transports in wall turbulence has been gaining attention in recent years, mainly motivated by the recent overwhelming evidence of interference by the large-scale structures away from the wall to the near-wall structures (see, for example, Hutchins & Marusic (2007), Mathis, Hutchins & Marusic (2009), Smits, McKeon & Marusic (2011), Dogan *et al.* (2019)). In order to examine the role of such scale interaction in detail, some attempts have been recently reported which investigate the turbulence transport scale-by-scale based on spectral analysis of the Reynolds stress transport equation (e.g. Lee & Moser 2015, 2017, 2019; Mizuno 2016; Cho, Hwang & Choi 2018; Kawata & Alfredsson 2018), the generalised Kolmogorov equation (e.g. Hill 2002; Marati, Casciola & Piva 2004; Saikrishnan *et al.* 2012; Cimarelli, De Angelis & Casciola 2013; Cimarelli *et al.* 2016), as well as a newly defined energy density equation (Hamba 2018), etc.

In turbulent shear flows under system rotation the interscale interaction may play an even more significant role, since in such flows the instability induced by the Coriolis force gives rise to coherent vortical structures coexisting with small-scale turbulence. As rotating shear flows are found not only in industrial applications but also in geophysical contexts, it is important from both applied and fundamental points of view to investigate how the nonlinear interaction between these structures affects the transport of momentum and turbulent energy.

We focus in this paper on the spanwise-rotating planar Couette flow (hereafter simply referred to as rotating plane Couette flow (RPCF)), where a plane Couette flow is under system rotation with angular velocity Ω_z and the rotation axis being parallel or antiparallel to the base-flow vorticity, as is schematically shown in figure 1. In the RPCF linear instabilities by the Coriolis force give rise to streamwise roll cells that are similar to those observed in the Taylor–Couette flow, and this flow actually corresponds to the extreme cases of the Taylor–Couette flow where the radius ratio of the inner to outer cylinder is close enough to unity that the curvature effect can be ignored (e.g. Faisst & Eckhardt 2000; Dubrulle *et al.* 2005; Brauckmann, Salewski & Eckhardt 2016). The linear stability of this flow has been well studied as we summarise in § 2. Briefly describing the behaviours of this flow the governing parameters are the Reynolds and rotation numbers defined in the present study as follows:

$$Re = \frac{U_w h}{\nu}, \quad Ro = \frac{2\Omega_z h}{U_w}, \quad (1.1a,b)$$

respectively, and in the cyclonic rotation case ($Ro < 0$, where the system is rotating in the same direction as the base-flow vorticity) the flow is stabilised whereas in the anticyclonic case ($Ro > 0$) the flow is destabilised (e.g. Tritton & Davies 1985). In the destabilising rotation case the roll-cell structure emerges even at very low Reynolds numbers (Lezius & Johnston 1976; Tillmark & Alfredsson 1996). The physical origin of this linear instability is an imbalance between the wall-normal pressure gradient and the Coriolis force. In the laminar regime with the destabilising system rotation the roll-cell structure can take several different forms depending on the Reynolds and rotation numbers (Tsukahara, Tillmark & Alfredsson 2010; Suryadi, Segalini & Alfredsson 2014; Kawata & Alfredsson 2016a).

In the turbulent regimes the roll cells coexist with smaller-scale turbulence. The roll cells become increasingly energetic as Ro increases up to $Ro \approx 0.2$, but start to decay

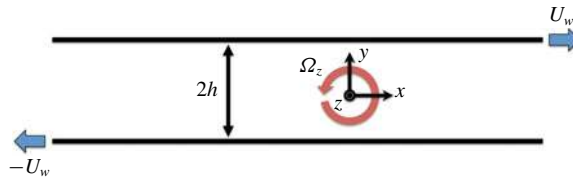


FIGURE 1. (Colour online) Geometry of rotating plane Couette flow. Reproduced from Kawata & Alfredsson (2016a).

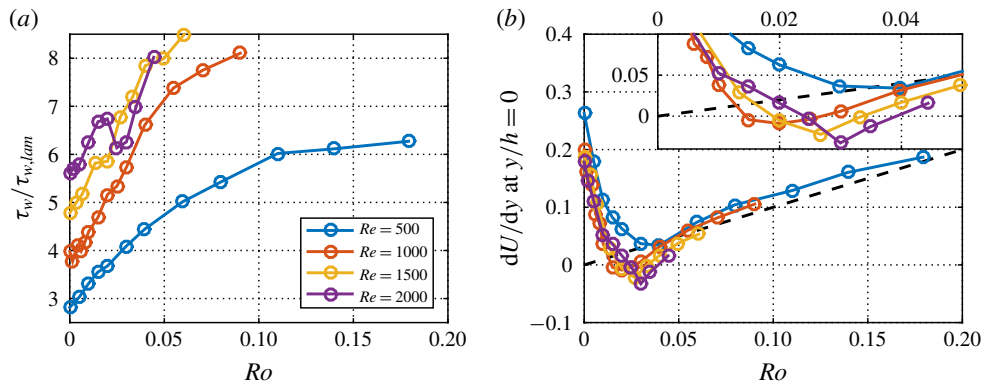


FIGURE 2. (Colour online) The rotation-number dependency of (a) the wall shear stress and (b) the mean velocity gradient at the channel centre reproduced from the experimental data of our previous work (Kawata & Alfredsson 2016b). The values shown in panels (a) and (b) are scaled by the base-flow case value $\tau_w = \mu U_w/h$ and U_w/h , respectively, and the black dashed line in panel (b) represents the state of zero absolute vorticity, $\Omega_a^* = -dU^*/dy^* + Ro = 0$.

at higher Ro (Bech & Andersson 1997; Gai *et al.* 2016). It is particularly noteworthy that in this moderate Ro range ($Ro \lesssim 0.2$) the small-scale turbulence is significantly attenuated with increasing Ro in contrast to the large-scale roll cells dominating the flow field (Bech & Andersson 1996; Salewski & Eckhardt 2015; Gai *et al.* 2016; Kawata & Alfredsson 2016b). At intermediate rotation numbers around $Ro \approx 0.02$, roll cells and turbulence are both energetic, and the wall shear stress and the mean velocity profile exhibit an interesting behaviour at high enough Reynolds numbers; as shown in figure 2(a), the variation of the wall shear stress with Ro exhibits a non-monotonic behaviour around $Ro \approx 0.02$ for $Re \gtrsim 2000$ (Salewski & Eckhardt 2015; Kawata & Alfredsson 2016b), and the mean velocity gradient at the channel centre becomes negative at similar Ro for $Re \gtrsim 1000$ (Salewski & Eckhardt 2015; Gai *et al.* 2016; Kawata & Alfredsson 2016b) as presented in figure 2(b). Since in the PRCF configuration the total shear stress, i.e. the sum of the viscous and Reynolds shear stresses, is constant throughout the channel and equal to the wall shear stress, the reversed mean velocity gradient indicates that the Reynolds shear stress at the channel centre locally exceeds the wall shear stress. As both the wall and Reynolds shear stresses are closely related with the momentum transport by flow structures, such a phenomenon may indicate that interaction between the roll cells and smaller-scale turbulence enhances momentum transport at high enough Reynolds numbers.

In the present study, we investigate the scale-by-scale Reynolds stress transport in turbulent RPCF focusing on how interaction between the roll cells and small-scale turbulence is related to the momentum and turbulence transport, with a particular interest in the Ro effect to attenuate small-scale turbulence and the characteristic behaviours of the wall shear stress and the mean velocity gradient at $Ro \approx 0.02$. The present analysis is based on the experimental dataset in Kawata & Alfredsson (2016b), and we follow the scale-by-scale analysis introduced by Kawata & Alfredsson (2018), where the Reynolds stress transport equations are decomposed into their large- and small-scale parts by spatial filtering.

The layout of this paper is as follows: in §2 we briefly summarise the basic governing equations and the linear instabilities of the RPCF, and in §3 the experimental dataset and the formulation for the scale-by-scale analysis are described. The overall rotation number effects on the flow structures and the turbulence transports are described in §4, followed by a more detailed discussion based on the scale-by-scale Reynolds stress transport for different Ro regimes in §5. The transport phenomena at $Ro \approx 0.02$ are investigated in §6, and the conclusion is finally given in §7.

2. Basic instability and the roll-cell structures of the RPCF

2.1. Governing equations

The governing equations are the continuity and Navier–Stokes equations for an incompressible fluid observed in a rotating frame,

$$\nabla \cdot \tilde{\mathbf{u}} = 0, \quad (2.1)$$

$$\frac{\partial \tilde{\mathbf{u}}}{\partial t} + \tilde{\mathbf{u}} \cdot (\nabla \tilde{\mathbf{u}}) = -\frac{1}{\rho} \nabla \tilde{p} + \nu \nabla^2 \tilde{\mathbf{u}} - 2\Omega_z \mathbf{e}_z \times \tilde{\mathbf{u}}, \quad (2.2)$$

where $\tilde{\mathbf{u}}$ ($= \tilde{u}\mathbf{e}_x + \tilde{v}\mathbf{e}_y + \tilde{w}\mathbf{e}_z$; \mathbf{e}_x , \mathbf{e}_y , and \mathbf{e}_z are the base vectors in the coordinates defined in figure 1) represents the instantaneous velocity including both the mean and fluctuating components and \tilde{p} is the instantaneous hydrostatic pressure including both static pressure and the centrifugal acceleration. In this flow configuration the flow can be assumed statistically homogeneous in the x - and z -directions as well as in time, and we consider in this study the statistical quantities averaged in these directions. The mean velocity is then given by $(U(y), 0, 0)$, and the mean streamwise momentum balance is obtained by averaging the x -component of (2.2) as

$$0 = \frac{d}{dy} \left(\nu \frac{dU}{dy} + \langle -uv \rangle \right), \quad (2.3)$$

where the lowercase characters represent the velocity fluctuation, and $\langle \rangle$ denotes the averaging operation. As shown here the Coriolis force does not appear in the mean streamwise momentum balance, and integrating (2.3) from one of the walls to an arbitrary wall-normal position (y) one obtains the shear stress balance in this flow,

$$\mu \frac{dU}{dy} + \rho \langle -uv \rangle = \text{const.} = \tau_w, \quad (2.4)$$

which is exactly the same form as in the non-rotating case.

The transport equation of the Reynolds stress $\langle u_i u_j \rangle$ is

$$\frac{\partial \langle u_i u_j \rangle}{\partial t} + U_k \frac{\partial \langle u_i u_j \rangle}{\partial x_k} = P_{ij} - \Theta_{ij} + \Phi_{ij} + D_{ij}^v + D_{ij}^t, \tag{2.5}$$

where the terms on the right-hand side are the production (P_{ij}) including the Coriolis force effect, viscous dissipation (Θ_{ij}), pressure-work (Φ_{ij}), viscous diffusion (D_{ij}^v) and turbulent transport (D_{ij}^t), which are, respectively, defined as follows:

$$\left. \begin{aligned} P_{ij} &= -\langle u_i u_k \rangle \frac{\partial U_j}{\partial x_k} - \langle u_j u_k \rangle \frac{\partial U_i}{\partial x_k} - 2\Omega_z (\epsilon_{i3m} \langle u_j u_m \rangle + \epsilon_{j3m} \langle u_i u_m \rangle) \\ \Theta_{ij} &= 2\nu \left\langle \frac{\partial u_i}{\partial x_k} \frac{\partial u_j}{\partial x_k} \right\rangle, \quad \Phi_{ij} = -\frac{1}{\rho} \left(\left\langle \frac{\partial p}{\partial x_i} u_j \right\rangle + \left\langle \frac{\partial p}{\partial x_j} u_i \right\rangle \right), \\ D_{ij}^v &= \nu \frac{\partial^2 \langle u_i u_j \rangle}{\partial x_k^2}, \quad D_{ij}^t = -\frac{\partial \langle u_i u_j u_k \rangle}{\partial x_k}, \end{aligned} \right\} \tag{2.6}$$

where ϵ_{lmn} is the permutation tensor. It should be noted here that the Coriolis force is always perpendicular to the velocity vector and does not do any work; it only redirects fluid motion without changing the kinetic energy. The Coriolis force effect is, therefore, rather an inter-component energy transfer between the normal stresses $\langle u^2 \rangle$, $\langle v^2 \rangle$ and $\langle w^2 \rangle$ than their ‘production’. However, for the Reynolds-shear-stress component $\langle -uv \rangle$ the Coriolis force terms do represent an additional production, which plays a central role in the Reynolds stress transport in RPCF. Hence in this study we define the production terms as shown above including the Coriolis force effect.

2.2. Linear instabilities and various roll-cell structures of the RPCF

The stability of the spanwise-rotating shear flows including the RPCF is a rather classical hydrodynamic stability problem and has been studied since the 1960s. Early theoretical investigations (for example, Bradshaw (1969), Hart (1971), Johnston, Halleen & Lezius (1972), Lezius & Johnston (1976), Tritton & Davies (1985)) showed that the inviscid local linear stability criterion is given based on the vorticity ratio $S = 2\Omega_z / (-dU/dy)$ as follows:

$$\begin{aligned} \text{unstable when} \quad & -1 < S < 0, \\ \text{stable} \quad & \text{otherwise,} \end{aligned} \tag{2.7}$$

indicating that even with the anticyclonic rotation ($S < 0$) the flow can be stabilised if the system rotation rate is high enough. The neutral stability boundary $S = -1$ corresponds to the state where the vorticities by the mean flow and background system rotation cancel each other, i.e. the absolute vorticity is zero,

$$\Omega_a^* = -\frac{dU^*}{dy^*} + Ro = 0. \tag{2.8}$$

Here the superscript * represents quantities normalised by U_w and/or h . Interestingly, the state of zero absolute vorticity has been observed in both laminar and turbulent regimes of rotating shear flows at high enough system rotation rates, such as the RPCFs (Bech & Andersson 1997; Suryadi *et al.* 2014; Gai *et al.* 2016;

Kawata & Alfredsson 2016*a,b*) and on the leading side of spanwise-rotating channel flows (Kristoffersen & Andersson 1993; Tanaka *et al.* 2000; Hamba 2006; Xia, Shi & Chen 2016; Brethouwer 2017). One can see in figure 2(*b*) that the profiles of the mean velocity gradient start following the line of the zero absolute vorticity state from $Ro \approx 0.05$. As shown later in § 5, the establishment of the zero-absolute-vorticity state plays a significant role in determining the scale-by-scale balance of the Reynolds stress transport.

Lezius & Johnston (1976) showed that the stability problem of the RPCF is mathematically equivalent to that of the Rayleigh–Bénard convection and gave the neutral stability curve as follows:

$$Re_{crit} = \Omega + \frac{107}{\Omega}, \quad (2.9)$$

where Ω is the alternative rotation number based on a viscous (diffusion) time scale, $\Omega = 2\Omega_z h^2/\nu$, and related with the other definition of the rotation number as $Ro = \Omega/Re$. Equation (2.9) gives the lowest critical Reynolds number as approximately 20.7 at $\Omega \approx 10.3$. One can also deduce from (2.9) that for a given Re ($\gg \sqrt{107}$) the unstable Ro range is approximately

$$\frac{107}{Re^2} < Ro < 1 - \frac{107}{Re^2}, \quad (2.10)$$

and this can be further simplified for sufficiently high Reynolds numbers as $0 < Ro < 1$, which no longer depends on Re . One can see that the inviscid local stability criteria (2.7) also gives the same unstable Ro range by letting $dU/dy \approx U_w/h$.

The linear analysis predicts that the primary instability of the RPCF appears in the form of two-dimensional roll cells that are streamwise independent and regularly spaced in the spanwise direction. Such roll cells were experimentally observed at very low Ro in the vicinity of the lower limit of the neutral stability boundary (2.10) in the laminar regime (Tillmark & Alfredsson 1996). As Ro increases secondary instabilities set in and wavy roll cells are observed (Hiwatashi *et al.* 2007). These correspond to the tertiary state found by Nagata (1998) that bifurcates from the two-dimensional roll cells. Tsukahara *et al.* (2010) investigated the RPCF over a wide range in the Re – Ω space ($0 \leq Re \leq 1000$, $-30 < \Omega < 30$) by flow-visualisation experiments and summarised the various types of roll cells observed on a Re – Ω flow map, identifying 17 different flow states. Suryadi *et al.* (2014) and Kawata & Alfredsson (2016*a*) investigated the laminar roll cells at $Re = 100$ over the full unstable Ro range $0 < Ro < 1$ and showed that the wavy roll cells observed at $Ro \approx 0.1$ further bifurcate to different types of roll cells at higher Ro and the roll cells indeed disappear around the upper limit of the neutral stability boundary $Ro \approx 1$. The exact solutions corresponding to those various roll cells observed by experiments were also found theoretically by Daly *et al.* (2014) later.

The Coriolis force effect is significant also in the turbulent flow regime. As already mentioned in § 1, for the anticyclonic rotation case the roll cells emerge and coexist with small-scale turbulence at low rotation numbers of the order of $Ro \approx 0.01$, and particularly in a narrow Ro range around $Ro \approx 0.02$ the aforementioned transport phenomena are observed at high enough Reynolds number. In the higher Ro range (of the order of $Ro \approx 0.1$) the roll cells dominate the flow field, while at even higher Ro ($\gtrsim 0.5$) the roll cells disappear and the dominance is taken over by the small-scale turbulence. As Ro approaches the neutral stability boundary $Ro \approx 1$ the flow tends

to become relaminarised (Bech & Andersson 1997; Gai *et al.* 2016). In the cyclonic system rotation case, on the other hand, the flow is significantly stabilised; the transitional Re range where the intermittent structures such as turbulent stripes are observed is expanded and the critical Re of transition to turbulence clearly increases as the system rotation rate increases (Tsukahara *et al.* 2010; Tsukahara 2011).

3. Experimental dataset and analytical procedure

3.1. Experimental dataset

The analysis in the present study is based on an experimental dataset from our previous work on turbulent RPCF (Kawata & Alfredsson 2016b), where detailed velocity field measurements by stereoscopic particle image velocimetry (stereo-PIV) were performed with the RPCF apparatus at the Fluid Physics Laboratory of Kungliga Tekniska högskolan (KTH) Mechanics. The details of the apparatus have already been described elsewhere, see Tillmark & Alfredsson (1991, 1992, 1996) for the details of the RPCF apparatus and Suryadi, Tillmark & Alfredsson (2013) and Kawata & Alfredsson (2016a) for the details of the PIV measurement system. The laser sheet of the stereo-PIV measurement was oriented parallel to the walls as schematically shown in figure 3, and the wall-normal location could be changed across the channel by traversing the reflecting mirror by a motorised linear traverse. The distance ($2h$) between the moving walls was 17.6 mm, the sliding speed of the wall U_w and the angular velocity of the turntable Ω_z could be changed up to approximately 270 mm s⁻¹ and 0.58 rad s⁻¹, respectively. The measurements were done at $Re = 500, 1000, 1500$ and 2000 for the rotation number range of $0 \leq \Omega \leq 90$. It should be noted that for a given rotational rate Ω_z the rotation number Ω is fixed independent from Re , whereas Ro changes with Re since $Ro = \Omega/Re$; for example, at the lowest Reynolds number case $Re = 500$ the investigated Ro range is $0 \leq Ro \leq 0.18$, while at the highest Reynolds number $Re = 2000$ the observed range is $0 \leq Ro \leq 0.045$.

The stereo-PIV measurements were carried out at several different y -positions in the range $-0.8 \leq y/h \leq 0.45$. The measurement domain size was approximately $8.6h \times 10.6h$ in the x - and z -directions, respectively, and the in-plane spatial resolution was approximately $\Delta x \times \Delta z = 0.23h \times 0.18h$, with the light sheet thickness of approximately 1.5 mm, which corresponds to $0.17h$. Approximately 300 statistically independent snapshots (separated by approximately 20 s, which is at least an order of magnitude larger than the integral time scale of the flow) of instantaneous velocity fields were obtained at each wall-normal position for evaluation of statistical quantities. In the present study, the wall shear stress τ_w was evaluated indirectly based on the measured profiles of the mean velocity and the Reynolds-shear-stress, by averaging the total shear stress values at data points in the central region of the channel $-0.5 \leq y/h \leq 0.45$. For further details of the stereo-PIV measurements used to obtain the current experimental data, see Kawata & Alfredsson (2016b).

3.2. Decomposition of the Reynolds stress transport equations

In the present study we focus on how interaction between the large-scale roll cells and smaller-scale turbulence influences the transport of momentum and turbulence in RPCF. To this end, we decompose the Reynolds stress transport equation into the large- and small-scale parts and thereby formulate the spatial and interscale transport of the Reynolds stresses caused by scale interaction. This decomposition has been already introduced in our previous work focusing on the non-rotating planar Couette

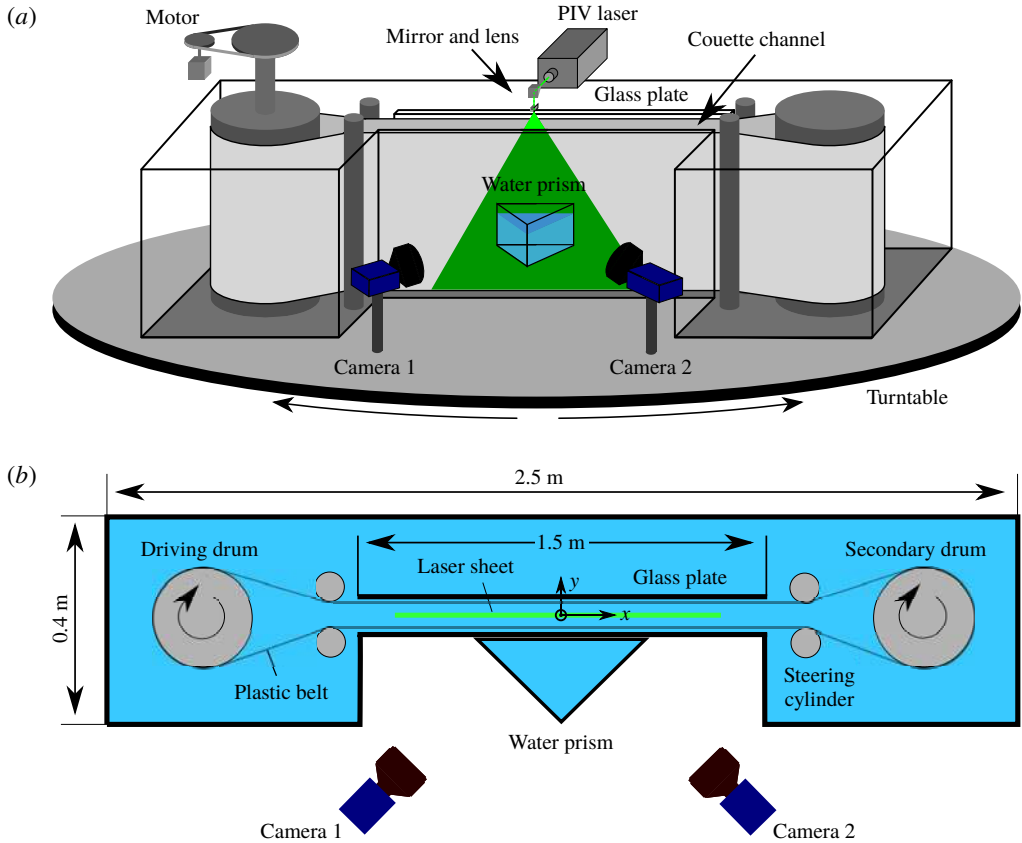


FIGURE 3. (Colour online) Experimental apparatus of the RPCF with a stereo-PIV measurement system; (a) isometric view of the apparatus and (b) top view of the test section. Reprinted with permission from Kawata & Alfredsson (2016a).

flow (Kawata & Alfredsson 2018), but here we give a more detailed description of the derivation and physical meanings of the each term of the decomposed Reynolds stress transport equations. We now consider such a decomposition of the fluctuating velocities,

$$u_i = u'_i + u''_i, \quad (3.1)$$

$$\langle u'_i u''_j \rangle = \langle u''_i u'_j \rangle = 0, \quad (3.2)$$

where u'_i and u''_i are the large- and small-scale parts of the fluctuating velocities, respectively, and the second equation (3.2) means that the cross-correlation between the large- and small-scale parts is zero for any combination of velocity component. Such decomposition is possible with spatial filtering based on, for example, the Fourier modes with a sharp cutoff wavenumber or the proper orthogonal decomposition. In this study we decompose the fluctuating velocities based on the spanwise Fourier mode, and do not consider the decomposition based on the streamwise Fourier modes since the streamwise extent of the present measurement domain is not large enough to capture the largest streamwise wavelength of the roll-cell structure.

With such a decomposition the Reynolds stresses $\langle u_i u_j \rangle$ are simply decomposed into their large- and small-scale parts as follows:

$$\langle u_i u_j \rangle = \langle u'_i u'_j \rangle + \langle u''_i u''_j \rangle. \tag{3.3}$$

On the other hand, the triple correlation of the fluctuating velocities $\langle u_i u_j u_k \rangle$, which represents the spatial transport flux of the Reynolds stress $\langle u_i u_j \rangle$ in the x_k -direction, is expanded into eight different terms,

$$\begin{aligned} \langle u_i u_j u_k \rangle &= \langle u'_i u'_j u'_k \rangle + \langle u'_i u'_j u''_k \rangle + \langle u''_i u'_j u'_k \rangle + \langle u'_i u''_j u'_k \rangle \\ &+ \langle u''_i u'_j u''_k \rangle + \langle u'_i u''_j u''_k \rangle + \langle u''_i u''_j u'_k \rangle + \langle u''_i u''_j u''_k \rangle, \end{aligned} \tag{3.4}$$

and unlike decomposing the Reynolds stress there is no term that vanishes on the right-hand side of (3.4).

The transport equations of $\langle u'_i u'_j \rangle$ and $\langle u''_i u''_j \rangle$ are obtained in a similar manner as the derivation of the ‘full’ Reynolds stress transport equation (2.5); the governing equation of the fluctuating velocity u_i is

$$\frac{\partial u_i}{\partial t} + U_k \frac{\partial u_i}{\partial x_k} + u_k \frac{\partial U_i}{\partial x_k} + u_k \frac{\partial u_i}{\partial x_k} - \frac{\partial \langle u_i u_k \rangle}{\partial x_k} = -\frac{1}{\rho} \frac{\partial p}{\partial x_i} + \nu \frac{\partial^2 u_i}{\partial x_k^2} - 2\Omega_z \epsilon_{i3k} u_k. \tag{3.5}$$

Multiplying the i th and j th components of (3.5) by u'_j and u'_i , respectively, and then taking sum of them, averaging both sides of the equation, and using (3.2) yields the transport equation of the large-scale part of the Reynolds stress $\langle u'_i u'_j \rangle$. The equation for the small-scale part $\langle u''_i u''_j \rangle$ is obtained in a similar manner, and the decomposed transport equations are obtained as follows:

$$\frac{\partial \langle u'_i u'_j \rangle}{\partial t} + U_k \frac{\partial \langle u'_i u'_j \rangle}{\partial x_k} = P_{ij}^L - \Theta_{ij}^L + \Phi_{ij}^L + D_{ij}^{v,L} + D_{ij}^{t,L} - Tr_{ij}, \tag{3.6}$$

$$\frac{\partial \langle u''_i u''_j \rangle}{\partial t} + U_k \frac{\partial \langle u''_i u''_j \rangle}{\partial x_k} = P_{ij}^S - \Theta_{ij}^S + \Phi_{ij}^S + D_{ij}^{v,S} + D_{ij}^{t,S} + Tr_{ij}, \tag{3.7}$$

where the terms on the right-hand side of (3.6) are the large-scale part of the corresponding terms of (2.5), which, respectively, are defined as

$$\left. \begin{aligned} P_{ij}^L &= -\langle u'_i u'_k \rangle \frac{\partial U_j}{\partial x_k} - \langle u'_j u'_k \rangle \frac{\partial U_i}{\partial x_k} - 2\Omega_z (\epsilon_{i3m} \langle u'_j u'_m \rangle + \epsilon_{j3m} \langle u'_i u'_m \rangle) \\ \Theta_{ij}^L &= 2\nu \left\langle \frac{\partial u'_i}{\partial x_k} \frac{\partial u'_j}{\partial x_k} \right\rangle, \quad \Phi_{ij}^L = -\frac{1}{\rho} \left(\left\langle u'_i \frac{\partial p'}{\partial x_j} \right\rangle + \left\langle u'_j \frac{\partial p'}{\partial x_i} \right\rangle \right), \quad D_{ij}^{v,L} = \nu \frac{\partial^2 \langle u'_i u'_j \rangle}{\partial x_k^2}, \end{aligned} \right\} \tag{3.8}$$

and the corresponding small-scale part in (3.7) are those with the superscript ‘prime’ interchanged with ‘double prime’. The terms related with nonlinear interaction between the large- and small-scale parts of the velocity field are the turbulent spatial transport terms,

$$D_{ij}^{t,L} = -\frac{\partial}{\partial x_k} (\langle u'_i u'_j u'_k \rangle + \langle u'_i u'_j u''_k \rangle + \langle u''_i u'_j u'_k \rangle + \langle u'_i u''_j u'_k \rangle), \tag{3.9}$$

$$D_{ij}^{t,S} = -\frac{\partial}{\partial x_k} (\langle u''_i u''_j u''_k \rangle + \langle u''_i u''_j u'_k \rangle + \langle u'_i u''_j u''_k \rangle + \langle u''_i u'_j u''_k \rangle), \tag{3.10}$$

and the turbulent interscale transport term,

$$Tr_{ij} = - \left\langle u_i'' u_k'' \frac{\partial u_j'}{\partial x_k} \right\rangle - \left\langle u_j'' u_k'' \frac{\partial u_i'}{\partial x_k} \right\rangle + \left\langle u_i' u_k' \frac{\partial u_j''}{\partial x_k} \right\rangle + \left\langle u_j' u_k' \frac{\partial u_i''}{\partial x_k} \right\rangle. \quad (3.11)$$

It can be easily seen that the sum of the transport equations (3.6) and (3.7) yields the classical Reynolds stress transport equation (2.5).

$D_{ij}^{t,L}$ and $D_{ij}^{t,S}$ represent the spatial redistribution of $\langle u_i' u_j' \rangle$ and $\langle u_i'' u_j'' \rangle$, respectively, and one can clearly see by comparing (3.9) and (3.10) with (3.4) that the first four terms of the expansion of the triple velocity correlation $\langle u_i u_j u_k \rangle$ appear in the large-scale part of the transport equation (3.6), and the other four terms in the small-scale part (3.7). Hence, we can define the large- and small-scale parts of the triple velocity correlation $\langle u_i u_j u_k \rangle$,

$$\langle u_i u_j u_k \rangle^L = \langle u_i' u_j' u_k' \rangle + \langle u_i' u_j'' u_k' \rangle + \langle u_i'' u_j' u_k' \rangle + \langle u_i' u_j' u_k'' \rangle, \quad (3.12)$$

$$\langle u_i u_j u_k \rangle^S = \langle u_i'' u_j'' u_k'' \rangle + \langle u_i'' u_j' u_k'' \rangle + \langle u_i' u_j'' u_k'' \rangle + \langle u_i' u_j' u_k'' \rangle, \quad (3.13)$$

which physically represent the spatial turbulent fluxes of $\langle u_i' u_j' \rangle$ and $\langle u_i'' u_j'' \rangle$ in the x_k -direction.

Clearly, Tr_{ij} represents the interscale flux of the Reynolds stress from the large- to small-scale side of the flow field across the cutoff wavenumber k_z . It is interesting to note here that the first two terms and the two last terms on the right-hand side of (3.11) have different signs and each of them is similar to the production term, since they are products of the second moment of the velocity fluctuations and velocity gradients. From the analogy to the Reynolds stress production, one may interpret that the first two terms indicate energy transfer from the larger to smaller scales, whereas the others represent the transfer in the other direction. It is also worth mentioning here that in the case where the velocity decomposition (3.1) is done based on the streamwise Fourier mode with the cutoff wavenumber $k_x = 0$ the decomposed transport equations (3.6) and (3.7) are identical to those analysed by Bech & Andersson (1996) and Gai *et al.* (2016), who focused on the turbulent energy exchange between the streamwise-independent secondary flows and turbulence. In that case the third and fourth terms on the right-hand side of (3.11) are zero, which might indicate that there is no reversed energy cascade from turbulence to two-dimensional large-scale structure.

By the decomposition of the Reynolds stress transport equation introduced above, it is now formulated how interaction between different scales is related to the spatial and interscale transport of turbulence. In the next section, the scale-by-scale transport equation of the Reynolds stress is introduced based on these decomposed transport equations, which is the main focus of the analysis in the present study.

3.3. Scale-by-scale transport of the Reynolds stresses

The Reynolds stress spectra E_{ij} can be obtained by differentiating the decomposed Reynolds stress by the cutoff wavenumber k_z as, $E_{ij} = \partial \langle u_i' u_j' \rangle / \partial k_z$. Therefore, similar differentiation of the decomposed Reynolds stress equation (3.6) by the cutoff wavenumber k_z yields the scale-by-scale transport equation of the Reynolds stress,

$$\frac{DE_{ij}}{Dt} = pr_{ij} - \theta_{ij} + \phi_{ij} + d_{ij}^v + d_{ij}^l + tr_{ij}, \quad (3.14)$$

where the terms on the right-hand side are the derivatives of the corresponding terms in (3.6). Except d_{ij}^t and tr_{ij} , they can be expressed in the form of Fourier spectra and represent the spectral contribution from each scale to overall production, viscous dissipation, etc. For example, the scale-by-scale production and viscous diffusion are expressed by the Reynolds stress spectra as follows:

$$pr_{ij} = \frac{\partial P_{ij}^L}{\partial k_z} = -E_{ik} \frac{\partial U_j}{\partial x_k} - E_{jk} \frac{\partial U_i}{\partial x_k} + 2\Omega_z(\epsilon_{i3m}E_{jm} + \epsilon_{j3m}E_{im}), \tag{3.15}$$

$$d_{ij}^v = \frac{\partial D_{ij}^{v,L}}{\partial k_z} = \nu \frac{\partial^2 E_{ij}}{\partial x_k^2}. \tag{3.16}$$

The scale-by-scale dissipation θ_{ij} and pressure work ϕ_{ij} are also expressed as the spectra of the velocity gradients and the cospectra of the velocities and pressure gradients, respectively.

On the other hand, the turbulent spatial transport d_{ij}^t and the interscale transport tr_{ij} defined as

$$d_{ij}^t = \frac{\partial D_{ij}^{t,L}}{\partial k_z} = \frac{\partial}{\partial k_z} \left(-\frac{\partial \langle u_i u_j u_k \rangle^L}{\partial x_k} \right), \quad tr_{ij} = -\frac{\partial Tr_{ij}}{\partial k_z}, \tag{3.17a,b}$$

consist of a number of combinations of the triad interaction between the fluctuating velocities and velocity gradients, and are therefore not simply expressed in the form of the Fourier spectra. For the spatial transport, one can define the spectra of the spatial flux of the Reynolds stress as

$$E_{ijk} = \frac{\partial \langle u_i u_j u_k \rangle^L}{\partial k_z} = \frac{\partial}{\partial k_z} (\langle u'_i u'_j u'_k \rangle + \langle u'_i u'_j u''_k \rangle + \langle u''_i u'_j u'_k \rangle + \langle u'_i u''_j u'_k \rangle). \tag{3.18}$$

Then, d_{ij}^t is viewed as $d_{ij}^t = -\partial E_{ijk} / \partial x_k$, indicating that d_{ij}^t represents the spatial redistribution of the Reynolds stress at each scale by the scale-by-scale spatial flux E_{ijk} . As for the interscale transport, Tr_{ij} is, as already described above, the Reynolds stress flux from the larger- to smaller-scale side across the wavenumber k_z , and their reversed derivatives $tr_{ij} = -\partial Tr_{ij} / \partial k_z$ therefore represent the local gain or loss at k_z by such interscale flux Tr_{ij} .

3.4. Evaluation of the scale-by-scale spatial and interscale transport of the Reynolds stress based on the experimental dataset

The fluctuating velocity fields measured by the stereo-PIV were transformed into Fourier coefficients by a fast Fourier transform algorithm, and the large-scale part of the velocity field u'_i was obtained by further applying the inverse Fourier transform after replacing the Fourier coefficients by zero at higher wavenumbers than the cutoff wavenumber k_z . Then, the small-scale part u''_i was obtained according to the definition $u''_i = u_i - u'_i$. With u'_i and u''_i obtained in such a way, the large- and small-scale parts of the Reynolds stress $\langle u'_i u'_j \rangle$ and $\langle u''_i u''_j \rangle$ and the terms in the decomposed Reynolds stress equations (3.6) and (3.7) were evaluated.

As one can see from (3.11), the interscale transport Tr_{ij} contains the instantaneous velocity gradients in all directions, one of which, namely $\partial/\partial y$, cannot be directly evaluated based on the present stereo-PIV data, and hence for evaluation of Tr_{uu} and Tr_{ww} such terms related with $\partial/\partial y$ are omitted. However, for Tr_{vv} and Tr_{-uv} all the

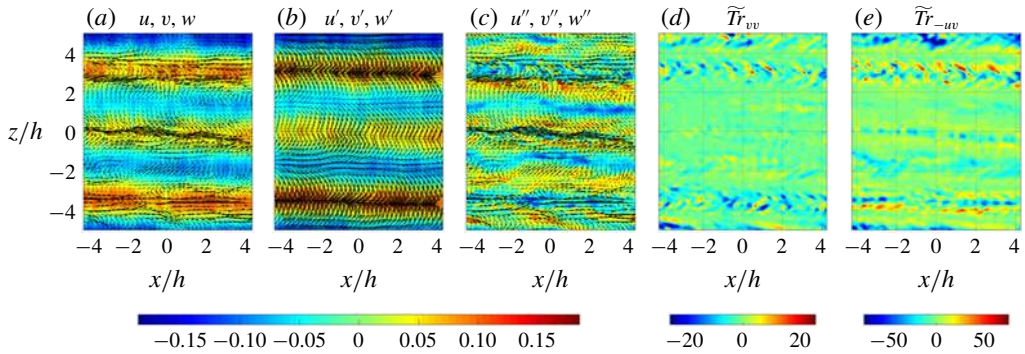


FIGURE 4. (Colour online) Snapshot of (a–c) instantaneous fluctuating velocity field at $y/h = -0.7$ for $Re = 1000$ and $Ro = 0.09$ decomposed with a cutoff wavelength $\lambda_z/h = 2.8$, and the corresponding distributions of the instantaneous interscale fluxes of (d) the wall-normal Reynolds stress \tilde{Tr}_{vv} and (e) the Reynolds-shear-stress \tilde{Tr}_{uv} . In the panels (a–c), the colours represent the wall-normal velocity component, i.e. (a) v , (b) v' , (c) v'' , while the black arrows represent the corresponding in-plane velocity vectors. The arrows are shown downsampled by a factor of 4 for clarity, with their length scale such that $2h$ length corresponds to U_w . The values shown by colours in each panel are scaled by (a–c) U_w and (d,e) u_τ^3/h .

terms including $\partial/\partial y$ components can be obtained via the continuity equation. The details are given in appendix A.

An example of such large- and small-scale decomposition is given in figure 4, where the decomposed instantaneous velocity fields in the near-wall region $y/h = -0.7$ are presented for $Re = 1000$ and $Ro = 0.09$. The cutoff wavelength chosen here is $\lambda_z/h = 2.8$, where the interscale fluxes Tr_{vv} and Tr_{uv} are most significant (as will be shown later in figure 7). As seen in figure 4(b) the nearly streamwise-independent roll cells are extracted in the large-scale part of the flow field, and the small-scale part given in the panel (c) is also shown to still retain some coherent structures. Here the decomposed instantaneous velocity fields are presented with the corresponding distributions of the instantaneous interscale fluxes \tilde{Tr}_{vv} and \tilde{Tr}_{uv} , which are defined by removing $\langle \rangle$ from (3.11). \tilde{Tr}_{ij} is derived by considering the transport of instantaneous Reynolds stresses $u'_i u'_j$ and $u''_i u''_j$ and represents the instantaneous energy exchange between them observed from the frame of reference that is convecting with the mean flow, as detailed in appendix B. The instantaneous interscale transfer fluxes \tilde{Tr}_{vv} and \tilde{Tr}_{uv} present both positive (from larger to smaller scales) and negative (from smaller to larger scales) transfers locally, while their net mean fluxes Tr_{vv} and Tr_{uv} at this cutoff wavelength $\lambda_z/h = 2.8$ show significant inverse (i.e. negative) interscale transfer as will be shown in §4.2.

In order to investigate the scale-by-scale Reynolds stress transport, such large- and small-scale decomposition was repeated at various cutoff wavenumbers over the range $0 \leq k_z \leq N_z/2L_z$, where $L_z = 10.6h$ and N_z is the number of data points in the z -direction, which is approximately 100 for all measurement cases. The large- and small-scale parts of the Reynolds stresses and their productions and turbulent transports were evaluated at every cutoff wavenumber, and the Reynolds stress spectra E_{ij} and their scale-by-scale productions and turbulent transports in (3.14) were then obtained by evaluating the gradient with respect to k_z .

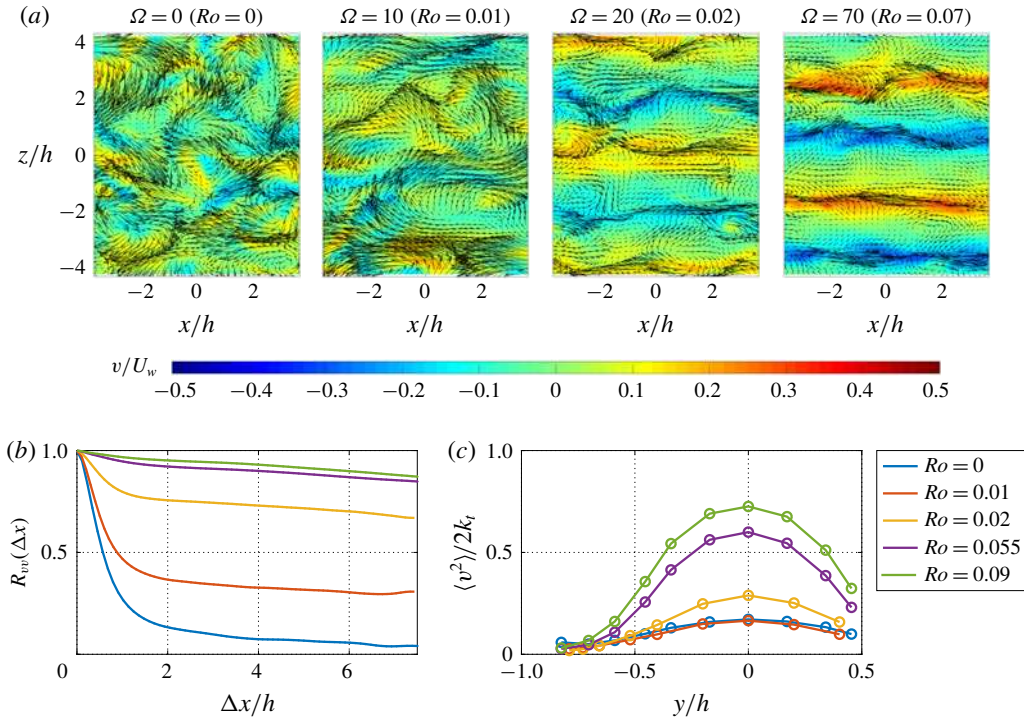


FIGURE 5. (Colour online) The Ro dependency of flow structure at $Re = 1000$ as a typical example of the Ro effect in the RPCF; (a) snapshots of instantaneous velocity fields on the channel centre plane at four different Ro for $Re = 1000$; (b) the streamwise two-point autocorrelation functions based on the wall-normal velocity $R_{vv}(\Delta x_i)$ at $y/h = 0$; (c) the profiles of $\langle v^2 \rangle / 2k_t = \langle v^2 \rangle / (\langle u^2 \rangle + \langle v^2 \rangle + \langle w^2 \rangle)$ across the channel. The colours and black arrows in the panel (a) represent the values of the instantaneous wall-normal velocity component v/U_w and the pattern of the in-plane velocity vectors (u, w), respectively. The black arrows are shown downscaled by a factor of 4 for clarity, and their length scale are the same as in figure 4(a–c).

4. Turbulent Reynolds stress fluxes at different rotation numbers

4.1. Overview of the Ro dependency of the flow structure

In this section, we first briefly summarise how the flow structures change with Ro , and then present the interscale and spatial flux of the Reynolds stresses at different rotation numbers. Figure 5(a) presents snapshots of instantaneous flow fields on the channel centre plane (xz -plane at $y/h = 0$) at $Re = 1000$, comparing four different Ro cases from no system rotation to a relatively high rotation of the order of $Ro \approx 0.1$, and it is shown here that as Ro increases the roll cells emerge and dominate the flow field. One can also see that the flow structures become more two-dimensional in the streamwise direction with increasing Ro , and such tendency is clearly depicted in figure 5(b), which gives the streamwise two-point autocorrelation functions at the channel centre. As shown here, the streamwise coherence of the structure increases as Ro increases. In particular, at relatively high rotation numbers $Ro = 0.055$ and 0.09 the $R_{vv}(\Delta x)$ profile keeps a high degree of correlation throughout the measurement range, indicating that the flow structure is nearly two-dimensional.

The other important aspect of the rotation number effect on the flow structure of the RPCF is the anisotropy between the Reynolds normal stresses, especially between $\langle u^2 \rangle$ and $\langle v^2 \rangle$, at the channel centre. As shown in figure 5(c), the wall-normal component $\langle v^2 \rangle$, which is smallest amongst the Reynolds normal stresses in wall turbulence, increases its fraction of the turbulent kinetic energy with increasing Ro and is approximately 80 % of $\langle u^2 \rangle + \langle v^2 \rangle + \langle w^2 \rangle$ at $Ro = 0.09$. Such unique anisotropy of the Reynolds stress is due to the Coriolis force effect in the Reynolds stress equation (2.5). In the present flow configuration the production of $\langle u^2 \rangle$ and $\langle v^2 \rangle$ are

$$\left. \begin{aligned} P_{uu}^* &= -2\langle u^* v^* \rangle \frac{dU^*}{dy^*} + 2Ro\langle u^* v^* \rangle, \\ P_{vv}^* &= -2Ro\langle u^* v^* \rangle, \end{aligned} \right\} \quad (4.1)$$

where the superscript $*$, as before, means normalisation with U_w and h as the case may be. It is easily seen here that in the anticyclonic rotation case ($Ro > 0$) the energy input to $\langle u^2 \rangle$ by the mean shear is partly transferred to $\langle v^2 \rangle$ by the Coriolis force term, and the effect of such energy transfer becomes increasingly significant as Ro increases. Such an anomalous anisotropy observed in figure 5(c) is a characteristic of the roll cells at relatively high rotation numbers $Ro \approx 0.1$, rather than of turbulence. At even higher rotation numbers $Ro \gtrsim 0.5$, the flow field is dominated by turbulence again, but the strong anisotropy ($\langle v^2 \rangle \gg \langle u^2 \rangle$) still persists (Bech & Andersson 1997).

Figure 6 presents the space-scale ($y-\lambda_z$) diagrams of the premultiplied Reynolds stress spectra E_{uu} , E_{vv} , and E_{-uv} comparing several different rotation numbers at $Re = 1000$. As shown in figure 6(a), the streamwise normal-stress spectrum E_{uu} at $Ro = 0$ indicates an energy peak in the near-wall region at $\lambda_z/h \approx 2.5$ and the energy is distributed broadly over a relatively wide range of scales. At higher Ro , on the other hand, the near-wall energy peak is shown to be shifted towards larger scales with increasing magnitude as Ro increases, while the energies at smaller scales instead decrease. It should be noted here that the near-wall peak at $Ro = 0$ is located in terms of the viscous unit approximately at $(\eta^+, \lambda_z^+) = (\eta u_\tau/\nu, \lambda_z u_\tau/\nu) \approx (18, 160)$, where η ($= y + h$) is the distance from the wall at $y/h = -1$, indicating that the near-wall peak observed at $Ro = 0$ corresponds to the turbulent near-wall structure (the friction Reynolds number $Re_\tau = u_\tau h/\nu = 63$ in this case). The large-scale energy peak observed at higher Ro is, on the other hand, rather scaled by the outer length scale h and corresponds to the roll cells. It is also seen that at relatively high rotation numbers $Ro = 0.055$ and 0.09 , E_{uu} is very small around the channel centre throughout the investigated λ_z range, except around $\lambda_z/h \approx 1$ where a slight amount of energy is distributed.

In figure 6(b), the wall-normal spectra E_{vv} are shown to increase at large scales with increasing Ro while decreasing at small scales, similarly to the behaviour of E_{uu} . In the non-rotating case E_{vv} shows a peak around $\lambda_z/h \approx 1.7$ at the channel centre, but as Ro increases another energy peak emerges at larger scales around $\lambda_z/h \approx 4$, which is at the same scale as the E_{uu} peak at this Ro . The large-scale peak significantly grows in magnitude with increasing Ro , while the first energy peak at the smaller scale is attenuated and disappears for $Ro \geq 0.055$. Such variations of E_{uu} and E_{vv} clearly demonstrate the Ro effect on flow structure to enhance energy at large scales while suppressing at small scales with increasing Ro . It should also be noted that at $Ro = 0.055$ and 0.09 the wall-normal spectra E_{vv} are much larger than E_{uu} at large scales in the channel central region, which corresponds to the strong anisotropy caused by the Coriolis force effect mentioned above.

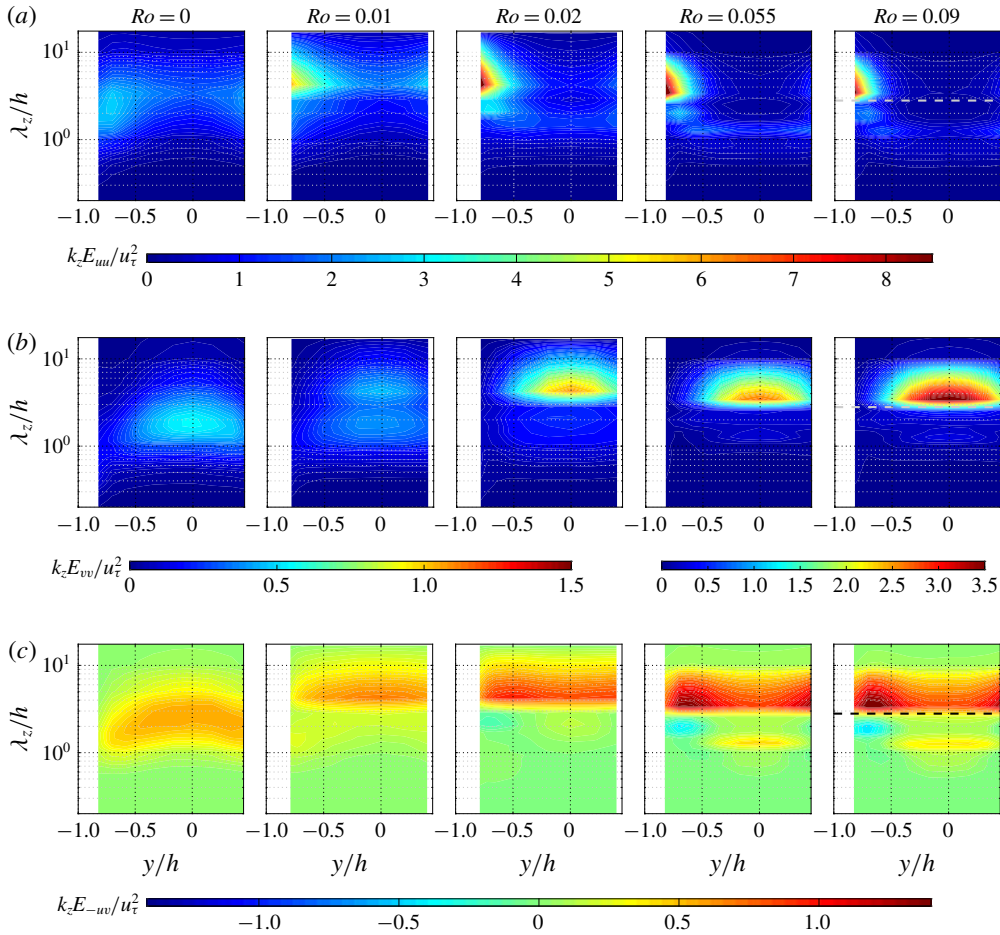


FIGURE 6. (Colour online) The rotation number dependency of the space-scale (y - λ_z) distribution of the premultiplied spanwise spectra of the Reynolds stresses at $Re = 1000$; (a) the streamwise Reynolds-normal-stress spectra $k_z E_{uu}$; (b) the wall-normal Reynolds-normal-stress spectra $k_z E_{vv}$; (c) the Reynolds-shear-stress cospectra $k_z E_{uv}$. The values shown here are scaled by u_τ^2 . Note that in the panel (b) the results for $Ro \leq 0.02$ and $Ro \geq 0.055$ are shown with different colour scales. The dashed line shown in the $Ro = 0.09$ case in each panel represents the cutoff wavelength for the decomposition presented in figure 4.

The shear-stress cospectra E_{uv} also present a similar Ro dependency; as Ro increases the contribution by large scales becomes increasingly significant. It is also noteworthy that at $Ro = 0.01$ the contribution by the roll cells and the near-wall structures are separately observed, as a small peak of the cospectra E_{uv} can be found in the near-wall region at relatively small scales apart from a significant energy peak at large scales $\lambda_z/h \approx 4$ that spans over a wide region of the channel. As Ro increases the cospectra E_{uv} at small scales decrease with increasing Ro similarly to the normal stress components E_{uu} and E_{vv} . At $Ro = 0.055$ and 0.09 the E_{uv} distribution interestingly presents a negative E_{uv} region near the wall and a secondary positive peak at the channel centre at $\lambda_z/h \approx 1$.

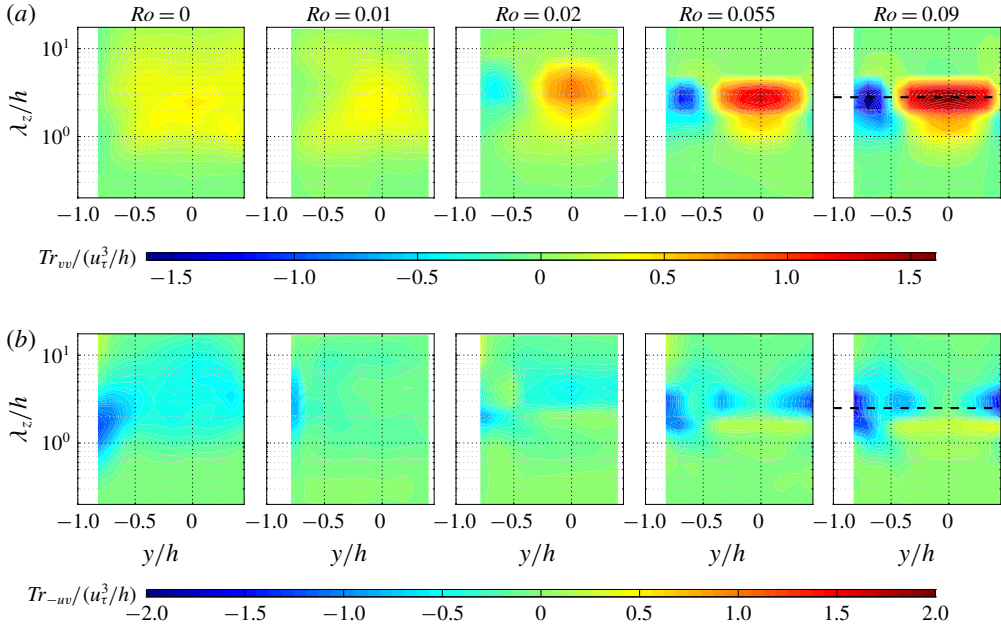


FIGURE 7. (Colour online) Space–wavelength (y – λ_z) diagrams of the interscale flux of (a) the wall-normal Reynolds stress Tr_{vv} and (b) the Reynolds-shear-stress Tr_{uv} at different rotation numbers Ro for $Re = 1000$. The values are scaled by u_τ^3/h . The dashed line shown in the $Ro = 0.09$ case in each panel represents the cutoff wavelength for the decomposition presented in figure 4.

The dashed lines in the spectra distributions at $Ro = 0.09$ indicate the cutoff wavelength $\lambda_z/h = 2.8$ used for the velocity field decomposition shown in figure 4, and one can see here that the large-scale part of the velocity field covers only the distinct peaks of the Reynolds stress spectra located at large scales $\lambda_z/h \geq 3$, and the small-scale part includes the rest. It should be particularly noted here that the negative E_{uv} in the near-wall region is included in the small-scale part, and the correlation between u'' and v'' presented in figure 4(c) actually is positive. Such positive correlation between the streamwise and wall-normal velocity components can be mainly found in the upwelling region of the large-scale roll cells (i.e. the region of $v' > 0$); comparing of figure 4(b) and 4(c) one can see that in the roll-cell's upwelling region (around $z \approx -4, 0, 4$) the black arrows in the panel (c) point towards the negative x -direction with $v'' < 0$, resulting in a positive correlation. In the large-scale part of the velocity field presented in figure 4(b), on the other hand, u' and v' are clearly correlated negatively. Gai *et al.* (2016) reported that a reversed circulation region appears near the wall between roll cells at $Re = 1300$ and $Ro = 0.25$ (see their figure 11). Although the present Re and Ro are smaller compared to the case of their investigation, the reversed velocity correlation observed here may correspond to a similar flow structure.

4.2. The interscale and spatial transport flux of the Reynolds stresses

The interscale flux of the wall-normal velocity fluctuation Tr_{vv} and the Reynolds shear stress Tr_{uv} at different rotation numbers are presented in figure 7. Note here

that all terms on the right-hand side of (3.11) are included for the evaluation of these components, and their positive values represent the interscale flux from larger to smaller scales across the wavelength λ_z while the negative values indicate transfer in the opposite direction. As shown in panel (a) the interscale flux of wall-normal stress Tr_{vv} mostly indicates energy transfer from larger to smaller scales at lower rotation numbers $Ro = 0$ and 0.01 , while at higher Ro it presents inverse energy transfer in the near-wall region. The shear stress interscale flux Tr_{-uv} is shown to mostly transfer the Reynolds shear stress from smaller to larger scales throughout the channel for the non-rotating case, as already reported in our previous study (Kawata & Alfredsson 2018), and at relatively high rotation numbers $Ro = 0.055$ and 0.09 positive interscale flux is found around the channel centre for $\lambda_z/h \leq 2$, while the inverse interscale flux is further strengthened in the near-wall region. Such inverse interscale transports by Tr_{vv} and Tr_{-uv} in the near-wall region might be related to the attenuation of small-scale turbulence at relatively high rotation numbers as discussed in § 5.3.

As shown by the dashed lines in the $Ro = 0.09$ case, the instantaneous velocity field at $y/h = -0.7$ presented in figure 4 is decomposed at the wavelength at which the inverse interscale fluxes by Tr_{vv} and Tr_{-uv} are most significant in the near-wall region. As presented in figures 4(d,e), the instantaneous values of these interscale fluxes take both positive and negative values, and their distributions are rather intermittent as the extremely large values in magnitude are concentrated in narrow spots. It also should be noted that the instantaneous magnitudes of these interscale fluxes are larger by one order compared to their averaged values (see the corresponding colour ranges in figures 4 and 7). Although such observations might be partly because of the noise involved in the stereo-PIV measurement that can be amplified when evaluating instantaneous velocity gradients, such an intermittent behaviour of interscale energy transport was also reported by earlier investigations (for example, Piomelli *et al.* (1991)).

The spatial transport of turbulence is also remarkably affected by the emergence of the roll cells. Figure 8 presents the profiles of the triple velocity correlations $\langle u^2v \rangle$, $\langle v^3 \rangle$ and $\langle -uv^2 \rangle$ at different Ro for $Re = 1000$, which represent the transport in the y -direction of the $\langle u^2 \rangle$, $\langle v^2 \rangle$ and $\langle -uv \rangle$, respectively. As shown here, the spatial flux of the streamwise velocity fluctuation $\langle u^2v \rangle$ indicates a transport of $\langle u^2 \rangle$ towards the channel centre from the near-wall region at all Ro , while the magnitude is somewhat enhanced at higher Ro . The transport of the wall-normal velocity fluctuation $\langle v^3 \rangle$ is shown to notably increase in magnitude with increasing Ro , indicating transport from the central to near-wall region of the channel. The shear-stress transport $\langle -uv^2 \rangle$ presents the most remarkable Ro dependency amongst the components shown here. As shown in the panel (c), the $\langle -uv^2 \rangle$ profiles at lower rotation numbers $Ro = 0$ and 0.01 indicate spatial fluxes of $\langle -uv \rangle$ towards the channel centre, while the direction of the transport is reversed as Ro increases and the $\langle -uv^2 \rangle$ profiles at relatively high rotation numbers $Ro = 0.055$ and 0.09 indicate significant fluxes from the central towards the near-wall region of the channel.

The spectral content of $\langle u^2v \rangle$ and $\langle -uv^2 \rangle$ are presented in figure 9 as typical examples of the Ro dependencies of the spectra of triple velocity correlations. First, it is an interesting observation that at $Ro = 0$ the transport of $\langle u^2 \rangle$ and $\langle -uv \rangle$ are mainly significant at two different scales $\lambda_z/h \approx 3.4$ and 0.85 , corresponding to $\lambda_z^+ \approx 200$ and 50 , respectively, and at both these scales the E_{uuv} and E_{-uuv} distributions indicate transport towards the channel centre. As Ro increases these spatial transport spectra are shown to qualitatively change their behaviours. As shown in panel (a), at

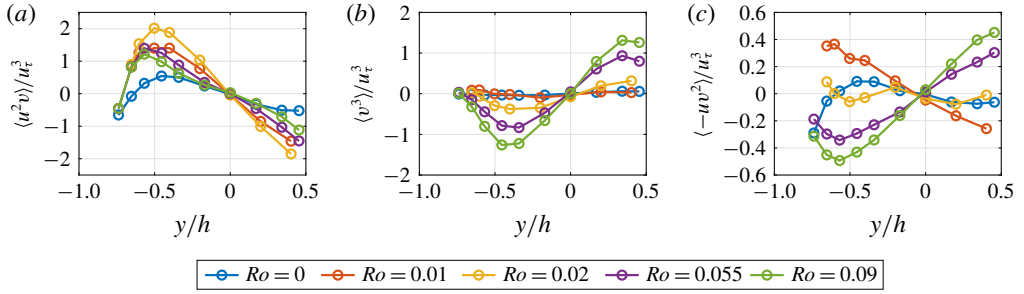


FIGURE 8. (Colour online) The spatial flux of the Reynolds stresses at different rotation numbers at $Re = 1000$; (a) $\langle u^2 v \rangle$; (b) $\langle v^3 \rangle$; (c) $\langle -uv^2 \rangle$. The values are scaled by u_τ^3 .

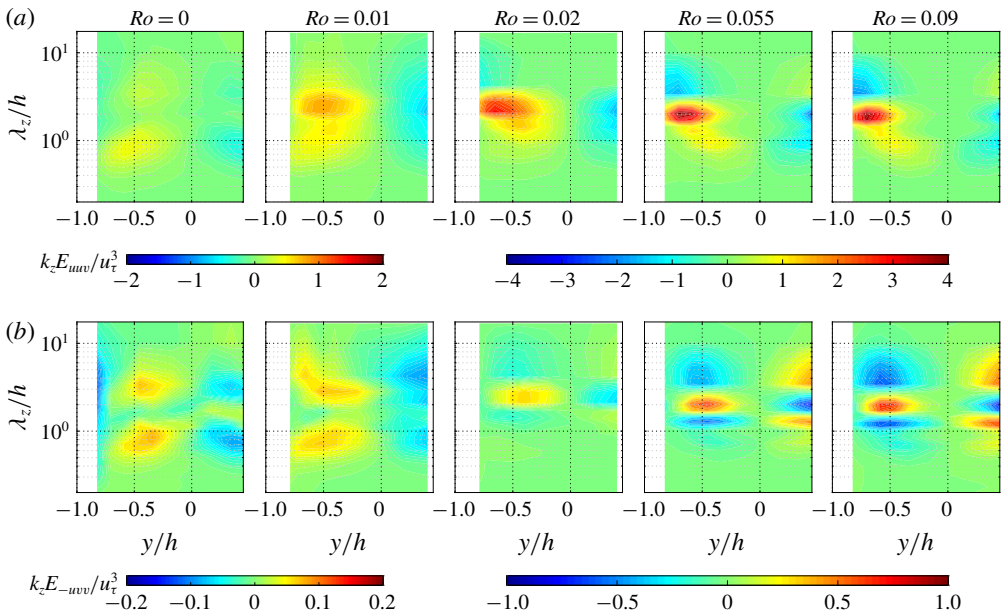


FIGURE 9. (Colour online) Space–wavelength ($y-\lambda_z$) diagrams of the premultiplied scale-by-scale spatial flux of (a) the streamwise Reynolds normal stress $k_z E_{uuv}$ and (b) the Reynolds shear stress $k_z E_{-uvv}$ at different rotation numbers for $Re = 1000$. The values are scaled by u_τ^3 .

relatively high rotation numbers $Ro = 0.055$ and 0.09 the distribution of E_{uuv} presents significant transport flux towards the channel centre for $\lambda_z/h < 3$, while at larger scales the direction of the flux is reversed in the near-wall region. The scale-by-scale flux of the shear stress E_{-uvv} remarkably changes its behaviour corresponding to the $\langle -uv^2 \rangle$ profiles presented in figure 8(c). As shown in figure 9(b), as Ro increases from $Ro = 0$ the shear stress transports towards the channel centre at relatively small scales $\lambda_z/h \approx 0.8$ is suppressed whereas those at larger scales are enhanced. At $Ro = 0.05$ and 0.09 the outward transport effects appear at large and smaller scales, which results in the overall net shear-stress transport from the central to the near-wall region of the channel as presented in figure 8(c).

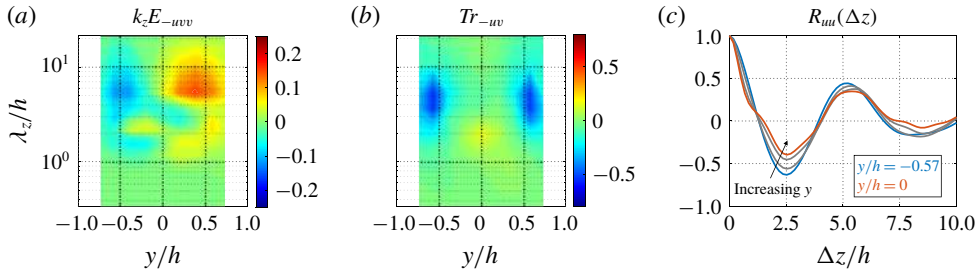


FIGURE 10. (Colour online) Distributions of the (a) spatial and (b) interscale flux of the Reynolds-shear-stress and (c) the spanwise autocorrelation functions at different y -positions in the laminar roll-cell case $Re = 100$ and $Ro = 0.4$. The values of $k_z E_{-uvv}$ and Tr_{-uv} are scaled by u_τ^3 and u_τ^3/h , respectively. Note that the y -ranges presented here are $-0.74 \leq y/h \leq 0.74$ symmetric with respect to the channel centre, while the measured range in the turbulent cases is asymmetric as $-0.82 \leq y/h \leq 0.45$.

The distributions of the interscale and spatial fluxes at $Ro = 0.055$ and 0.09 shown above display their typical behaviours in the relatively high rotation number range $Ro \gtrsim 0.05$, and similar distributions are found also at other Reynolds numbers investigated in the present study. In fact, such a trend can be found even in the laminar roll-cell case. Figure 10 gives the distributions of E_{-uvv} and Tr_{-uv} at $Re = 100$ and $Ro = 0.4$, where the ‘skewed’ roll cells are found (Suryadi *et al.* 2014; Kawata & Alfredsson 2016a). One can see here that despite the flow being laminar the E_{-uvv} distribution presents a similar tendency as the turbulent case at $Ro = 0.055$ and 0.09 in figure 9(b), presenting spatial transport in different directions at different scales. The interscale flux Tr_{-uv} in this laminar case also presents a similar distribution to the turbulent cases at $Ro = 0.055$ and 0.09 presented in figure 7(b). It should be mentioned here that basically the same tendencies are found at other Ro where other types of laminar roll cells are found, such as the wavy roll cells or the two-dimensional roll cells, as long as the secondary motion of the roll cells is strong enough.

To explain the reason for such interscale and spatial Reynolds stress transport in the laminar case, we present the spanwise autocorrelation functions $R_{uu}(\Delta z)$ at different wall-normal locations in this case in figure 10(c). As shown there, while the profiles of R_{uu} at all y -positions present similar periodic behaviours with the periodicity corresponding to the width of the roll cells, the profile at the channel centre is shown to be somewhat skewed, indicating that the velocity spectra at the channel centre include additional higher harmonics. Such variation of the spectral contents of the roll cells across the channel results in the interscale and spatial Reynolds stress transport even in the laminar case. Such resemblance between the laminar and turbulent cases suggests that the spatial and interscale transport of the Reynolds stresses observed at relatively high rotation numbers $Ro \approx 0.1$ are, even in the turbulent regime, mostly due to the secondary motion of the roll cells alone, rather than interaction between the roll cells and turbulence.

As shown above, the Reynolds stress transport in the RPCF transitions from those driven by the wall turbulence ($Ro \lesssim 0.01$) to those governed by secondary motion of the roll cells ($Ro \approx 0.1$) as Ro increases, and it is also shown that those at $Ro = 0.02$ exhibit an intermediate behaviour between these two regimes. It is particularly noteworthy that, as shown in figure 9(b), the spatial flux of the Reynolds shear stress towards the channel centre at the middle scales $\lambda_z/h \approx 2$, which roughly correspond to half of the roll-cell width, is especially enhanced at $Ro = 0.02$. Such enhancement of

the Reynolds stress flux becomes increasingly significant at higher Reynolds numbers and closely related to the appearance of the reversed mean velocity gradient at the channel centre, as described later in §6. In the next section, we further investigate the role of the above-described spatial and interscale transports for different Ro regimes by comparison with the Reynolds stress production at each scale, and discuss how turbulent energy at small scales is attenuated at relatively high Ro .

5. The scale-by-scale Reynolds stress transport in different rotation number regimes

We have investigated the scale-by-scale balance between the Reynolds stress production and the turbulent transports at various rotation numbers for $0 \leq Ro \lesssim 0.1$, and found that in this Ro range there are roughly three different Ro regimes.

- (i) Very low rotation number regime of the order of $Ro \approx 10^{-3}$, where the Coriolis force effect is negligibly small compared to the mean shear, and the scale-by-scale balance is therefore essentially similar to the non-rotating plane Couette turbulence.
- (ii) Relatively low rotation number regime $Ro \approx 0.01$, where the influence by the Coriolis force is observed in the productions of the Reynolds stresses while the interscale and spatial transports still exhibit similar behaviours as for the non-rotating case.
- (iii) Zero-absolute-vorticity regime $Ro \gtrsim 0.05$, where the Coriolis force effect is so significant that the zero absolute vorticity is established around the channel centre and both the Reynolds stress productions and turbulent transports exhibit qualitatively different behaviours as compared to lower Ro regimes.

In the following we present the scale-by-scale budgets for the (ii) $Ro \approx 0.01$ and the (iii) $Ro \gtrsim 0.05$ cases. As for the details of the scale-by-scale budget of non-rotating wall turbulence, readers are referred to our previous work (Kawata & Alfredsson 2018) focusing on the Reynolds-shear-stress transport of the non-rotating planar Couette turbulence, as well as to other recent studies analysing the scale-by-scale energy transport of turbulent channel flows by different methodologies (such as, Cimarelli *et al.* (2013, 2016), Mizuno (2016), Cho *et al.* (2018), Hamba (2018), Lee & Moser (2019)).

5.1. In the relatively low rotation number regime $Ro \approx 0.01$

We first investigate the scale-by-scale balance of the Reynolds stress transport at low rotation numbers $Ro \approx 0.01$. In figure 11 the Reynolds stress spectra, their scale-by-scale productions as well as interscale and spatial transports at $Ro = 0.01$ and $Re = 1000$ are presented. As already shown in figure 6, at this Ro the wall-normal stress spectrum E_{vv} indicates two energy peaks at the channel centre, and the cospectrum E_{-uv} also presents the contributions by the roll cells and the near-wall structure separately. As in the RPCF configuration the averaged quantities are only functions of the wall-normal coordinate y , the scale-by-scale productions of the Reynolds stresses are evaluated as follows:

$$pr_{uu}^* = 2E_{-uv}^* \frac{dU^*}{dy^*} - 2RoE_{-uv}^*, \quad (5.1)$$

$$pr_{vv}^* = 2RoE_{-uv}^*, \quad (5.2)$$

$$pr_{-uv}^* = E_{vv}^* \frac{dU^*}{dy^*} + Ro(E_{uu}^* - E_{vv}^*), \quad (5.3)$$

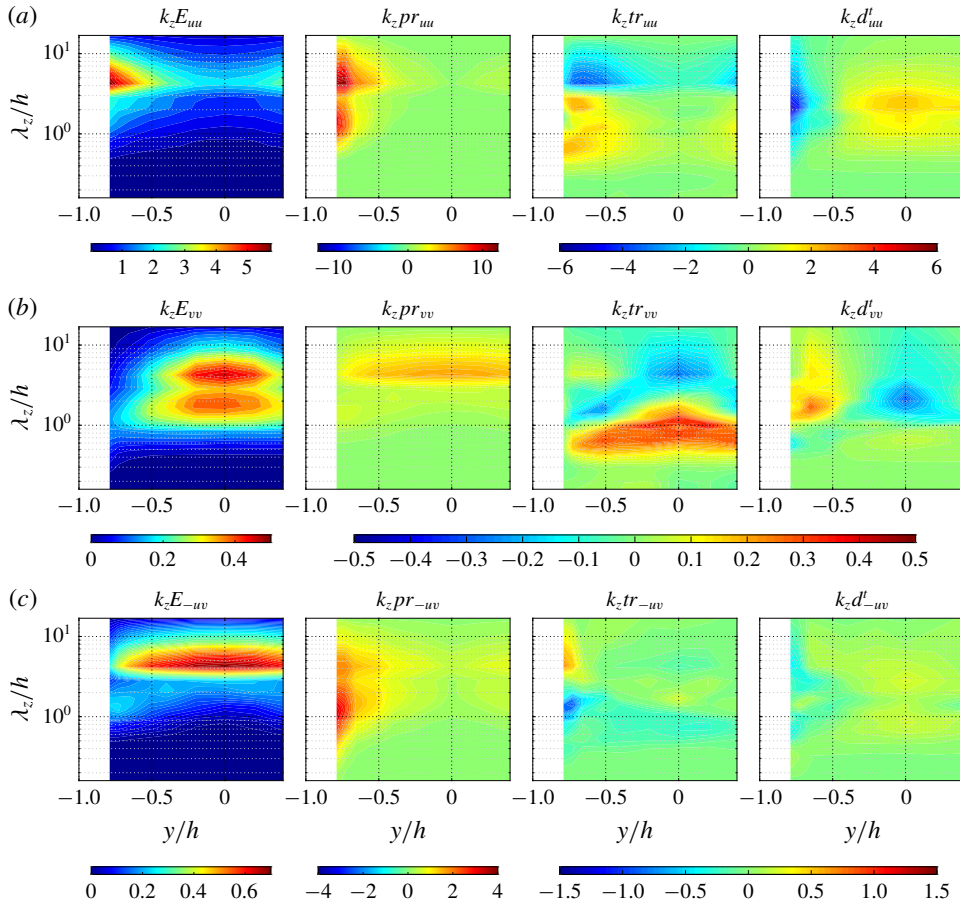


FIGURE 11. (Colour online) Space–wavelength (y – λ_z) diagrams of the premultiplied energy spectra or shear-stress cospectra and their scale-by-scale production, interscale transport, and spatial transport at $Ro = 0.01$ and $Re = 1000$; (a) $\langle u^2 \rangle$ spectra and the scale-by-scale budget; (b) $\langle v^2 \rangle$ spectra and the scale-by-scale budget; (c) $\langle -uv \rangle$ cospectra and the scale-by-scale budget. The values shown here are scaled by u_τ^2 for the Reynolds stress spectra or cospectra and by u_τ^3/h for the scale-by-scale productions and $k_z d_{ij}^t$ and turbulent transports.

and the scale-by-scale spatial redistribution d_{ij}^t is also simplified as

$$d_{uu}^t = -\frac{dE_{uu}}{dy}, \quad d_{vv}^t = -\frac{dE_{vv}}{dy}, \quad d_{-uv}^t = -\frac{dE_{-uv}}{dy}. \quad (5.4a-c)$$

The interscale transport tr_{ij} is evaluated according to the definition given in § 2, and in figure 11 the interscale transfer of the streamwise stress tr_{uu} is also given for comparison, despite that the $\partial/\partial y$ -related terms are not included in the evaluation.

At this Ro the Coriolis force effect is not negligible compared to the mean-shear effect, and the Ro -related terms in the productions (5.1)–(5.3) play a certain role in the scale-by-scale transport of each Reynolds stress component. As shown in figure 11(b) the production of the wall-normal stress $pr_{vv} = 2RoE_{uv}$ by the Coriolis force effect

is comparable to the other transport terms, unlike at lower rotation numbers where pr_{vv} is negligible and the main energy source for E_{vv} is the energy redistribution by the pressure-strain correlation effect at relatively small scales. One can see that the E_{vv} peak located at larger scales is produced by pr_{vv} , while the one at smaller scales is likely supported through the pressure-strain energy redistribution as at lower Ro . The shear-stress production pr_{-uv} indicate two main peaks at different scales in the near-wall region as presented in figure 11(c). The one located at relatively small scales $\lambda_z/h \approx 1$ is due to the mean-shear effect $E_{vv} dU/dy$, i.e. the first term in (5.3), whereas the peak at larger scales $\lambda_z/h \approx 4$ is partly contributed by the Coriolis force term $Ro(E_{uu}^* - E_{vv}^*)$ due to the significant peak of E_{uu} near the wall. The aforementioned large-scale and near-wall peaks in the distribution of E_{-uv} are attributable to such productions by different effects at different scales, which eventually results in the E_{uu} production at different scales near the wall as shown in figure 11(a).

As indicated by the tr_{uu} and tr_{vv} distributions the Reynolds normal stresses $\langle u^2 \rangle$ and $\langle v^2 \rangle$ are shown to be interscale-transferred basically from larger to smaller scales throughout the channel, as considered in the general picture of a turbulent energy cascade. The spatial transport d_{uu}^t carries $\langle u^2 \rangle$ from the near-wall to the central region of the channel basically at all scales investigated, but d_{vv}^t indicates spatial transport in different directions depending on the scale. On the other hand, the Reynolds shear stress $\langle -uv \rangle$ is shown to be transferred from relatively small scales $\lambda_z/h \approx 1$ to larger scales $\lambda_z/h \geq 2$ by the interscale transport tr_{-uv} throughout the channel, and at both these large and small scales the spatial transport d_{-uv}^t is shown to transport the Reynolds shear stress from the near-wall towards the central region of the channel. Such tendencies of the interscale and spatial transports are essentially similar to the non-rotating case in contrast to the productions, and in particular the trends of the Reynolds-shear-stress transports tr_{-uv} and d_{-uv}^t can be interpreted as an influence from the near-wall structures to the large-scale structures in the core region of the channel (Kawata & Alfredsson 2018).

5.2. In the zero-absolute-vorticity regime $Ro \gtrsim 0.05$

We next investigate the relatively high Ro case, i.e. $Ro \gtrsim 0.05$. The Reynolds stress spectra and their productions and transports at $Ro = 0.09$ for $Re = 1000$ are presented in figure 12, and as one can see in figure 2(b) the state of zero absolute vorticity is established around the channel centre in this case. It is shown in figure 12 that at this relatively high Ro both the production and turbulent transport terms indicate qualitatively different tendencies from the non-rotating case. In particular, the interscale and spatial transports of $\langle v^2 \rangle$ and $\langle -uv \rangle$ are significant. Their magnitudes are larger by nearly one order than those in the lower Ro regimes, and all transport terms are comparable to the production of each Reynolds stress component. Such remarkable contributions by the turbulent transports are not observed in the lower Ro cases.

Due to the zero absolute vorticity, the scale-by-scale productions pr_{uu} and pr_{vv} in the channel core region are

$$pr_{uu}^* = 2E_{-uv}^* \left(\frac{dU^*}{dy^*} - Ro \right) = 0, \quad (5.5)$$

$$pr_{vv}^* = 2RoE_{-uv}^*, \quad (5.6)$$

indicating that the energy input from the mean flow to the streamwise velocity fluctuations is almost absorbed by the wall-normal component through the Coriolis

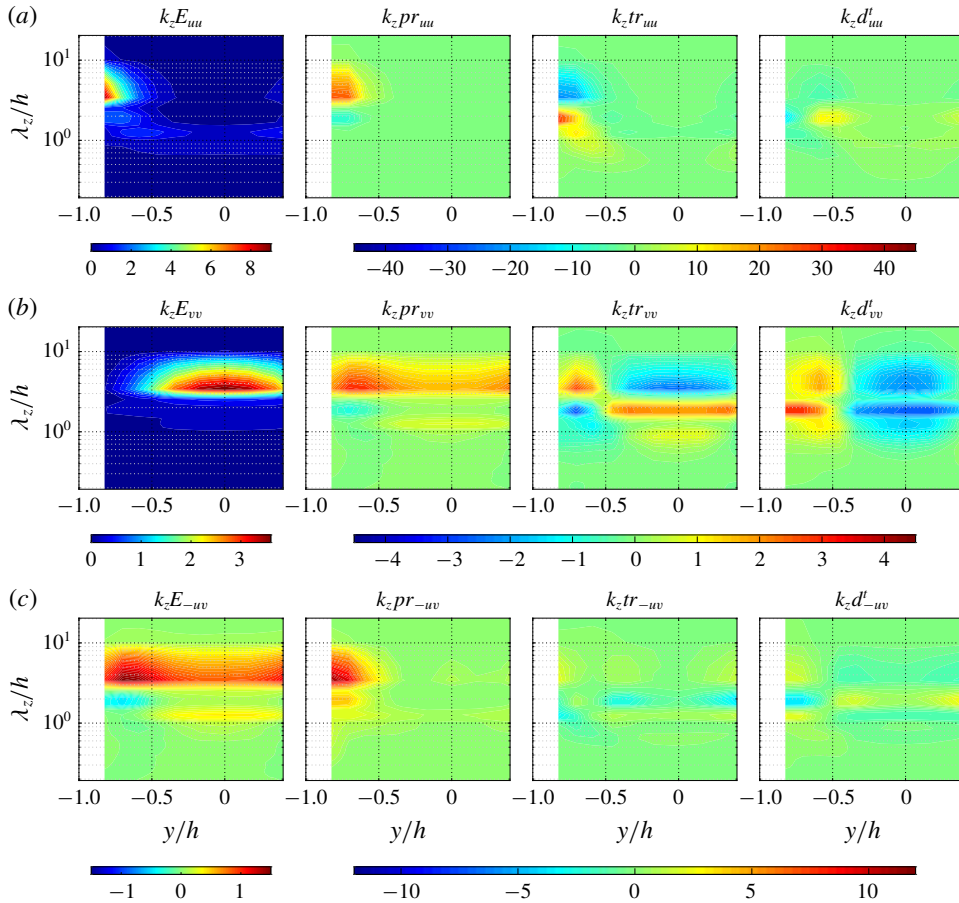


FIGURE 12. (Colour online) Space–wavelength (y – λ_z) diagrams of the premultiplied energy spectra or shear-stress cospectra and their scale-by-scale production, interscale transport, and turbulent spatial transport at $Ro = 0.09$ and $Re = 1000$; (a) $\langle u^2 \rangle$ spectra and the scale-by-scale budget; (b) $\langle v^2 \rangle$ spectra and the scale-by-scale budget; (c) $\langle -uv \rangle$ cospectra and the scale-by-scale budget. The values shown here are scaled by u_τ^2 for the Reynolds stress spectra or cospectra and by u_τ^3/h for the scale-by-scale productions and turbulent transports.

force effect. Figure 12(a,b) indeed shows that the production of the streamwise normal-stress spectra pr_{uu} is negligibly small around the channel centre at all scales and the wall-normal stress production pr_{vv} is instead significant at large scales, which gives the strong anisotropy in the channel core region. On the other hand, the shear stress production is

$$pr_{-uv}^* = RoE_{uu} + E_{vv} \left(\frac{dU^*}{dy^*} - Ro \right) = RoE_{uu}, \tag{5.7}$$

and one can see here by the above equations (5.5)–(5.7) that the mean shear effect disappears from the production of any component under the zero-absolute-vorticity state. Due to such absence of the energy input by the mean shear, the production of

the shear stress component pr_{-uv} is also very small across the channel, while it still presents slight positive values due to the remaining Coriolis force effect through E_{uu} .

It is shown in figure 12(a) that the production of the streamwise energy spectra pr_{uu} is remarkable near the wall presenting significant positive and negative contributions, and the negative production is due to the negative shear-stress cospectra at the corresponding location, see the E_{-uv} distribution in the panel (c). Comparing the distributions of pr_{uu} with the turbulent transports tr_{uu} and d_{uu}^t , one can see that the streamwise energy produced by pr_{uu} at large scales near the wall is transferred towards smaller scales by the interscale transport tr_{uu} , a part of which is depleted by the negative production, but the rest is further transported towards the channel centre, which results in the certain energy E_{uu} distributed at small scales around the channel centre. As for the scale-by-scale budget of the wall-normal spectra E_{vv} , the interscale transport tr_{vv} shows a ‘forward’ and ‘reversed’ cascade in the channel-core and near-wall region, respectively, corresponding to the Tr_{vv} distribution presented in figure 7(c), and the spatial transport d_{vv}^t presents a strong wallward transport from the central to near-wall region of the channel at both large and small scales. Such significant contributions by tr_{vv} and d_{vv}^t , however, nearly cancel each other out at small scales (compare the tr_{vv} and d_{vv}^t distributions in figure 12(b), they are quite similar in $\lambda_z/h \leq 3$ with opposite sign) and the net total effect by these turbulent transports together, $(tr_{vv} + d_{vv}^t)$, is a significant transport from the core to near-wall region of the channel at large scales.

The shear stress production pr_{-uv} is also significant at large scales near the wall, resulting in the near-wall peak of E_{-uv} at the corresponding large scales. The transport terms tr_{-uv} and d_{-uv}^t present a somewhat complex pattern of distribution which changes sign a few times throughout the investigated y and λ_z range, corresponding to the distribution of Tr_{-uv} and E_{-uvv} presented in figures 7(c) and 8(c). However, their contributions, similar to tr_{vv} and d_{vv}^t , nearly cancel each other in the channel core region, and their total contribution $tr_{-uv} + d_{-uv}^t$ is an inverse interscale transport in the near-wall region of the channel that removes a significant amount of $\langle -uv \rangle$ from relatively small scales $\lambda_z/h \approx 2$ and brings it to larger scales. As shown later in detail, such a negative contribution by $tr_{-uv} + d_{-uv}^t$ at relatively small scales in the near-wall region is as significant as the local production and therefore can be attributed to the appearance of the negative E_{-uv} region. On the other hand, since the total transport $tr_{-uv} + d_{-uv}^t$ is nearly zero at the channel centre, the secondary peak of E_{-uv} at small scales is mainly attributable to the slight positive production pr_{-uv} at the channel centre by the Coriolis force effect.

While the discussions described above are based on pr_{ij} , tr_{ij} and d_{ij}^t , the role of pressure can also be affected by the system rotation because the source term of the Poisson equation for pressure involves the Coriolis force term. As one can see in figure 12, the residual of three terms presented here is obviously not zero. In particular, in the wall-normal stress transport pr_{vv} , tr_{vv} and d_{vv}^t all present a significant positive peak at large wavelengths near the wall, and also in the shear-stress transport the significant gain by p_{-uv} in the near-wall region is obviously not balanced by $tr_{-uv} + d_{-uv}^t$. These positive residuals should be compensated by the other terms, and here the role of the pressure-related terms is implied. Some earlier numerical studies on the rotating Poiseuille flow (e.g. Ishida, Tsukahara & Kawaguchi 2014; Brethouwer 2017) reported that the pressure-strain correlations play a central role in the transport of $\langle v^2 \rangle$ and $\langle -uv \rangle$ in the near-wall region on the pressure side, transferring the energy from $\langle v^2 \rangle$ to $\langle w^2 \rangle$ and dissipating $\langle -uv \rangle$ in the near-wall region. As the flow structures there are dominated by the roll-cell structures similarly to the present flow

configuration, it can be inferred from these results that the significant residuals near the wall shown in figures 12(b) and 12(c) would be compensated mainly by the pressure-strain correlations. Such effect of transferring energy from $\langle v^2 \rangle$ to $\langle w^2 \rangle$ near the wall corresponds to the blocking effect by the wall which redirects the secondary motion of the roll cells towards the wall into the spanwise direction, and the tendency of the pressure-strain correlation to act as the main sink in the $\langle -uv \rangle$ transport is similar to its role in the non-rotating wall turbulence.

As shown above, the distributions of E_{uu} and E_{vv} at relatively high rotation numbers $Ro \approx 0.1$ are clearly concentrated at large scales corresponding to the width of the roll cells, and less energy is distributed at smaller scales. This is in contrast to the non-rotating case where turbulent energy is broadly distributed over a wide range of scales. The primary difference in the scale-by-scale energy budget between the non-rotating and $Ro \approx 0.1$ cases is the energy supply to the wall-normal stress spectra E_{vv} . In the non-rotating case there is no production for this component and the only energy source is the energy redistribution from E_{uu} through the pressure-strain correlation at relatively small scales, which results in the distribution of E_{vv} at relatively small scales compared to E_{uu} (see figure 6). Such an E_{vv} distribution leads to shear-stress production at relatively small scales as $pr_{-uv} = E_{vv} dU/dy$, and the shear stress $\langle -uv \rangle$ thus produced at small scales is transferred to larger scales by the interscale transport, which leads to turbulent energy production at larger scales (Kawata & Alfredsson 2018). Hence, the energy source to different Reynolds stress components at different scales might be a key factor in maintaining the energy distributions over a wide range of scales. In the relatively high Ro regime, on the other hand, the wall-normal spectrum E_{vv} has a significant energy gain at large scales as the streamwise component E_{uu} , as shown in figure 12, and the shear stress component E_{-uv} is, therefore, also produced at the same scale as its production pr_{-uv} depends on E_{uu} and E_{vv} (see (5.3)). Therefore, all Reynolds stress productions are ‘locked’ at the same scales under the presence of a significant Coriolis force effect.

5.3. On the Ro effect to attenuate small-scale structures

As shown in figures 6 and 12, the energies at relatively small scales are clearly attenuated in the relatively high Ro regime ($Ro = O(0.1)$). This energy suppression at small scales is particularly significant in the near-wall region as illuminated in figure 13(a-1) and (b-1), where the turbulent kinetic energy spectra $E_{k_i} = (E_{uu} + E_{vv} + E_{ww})/2$ and the Reynolds-shear-stress cospectra E_{-uv} at near-wall location $\eta^+ = 20$ at $Re = 1000$ are shown to clearly decrease at small scales with increasing Ro . The decrease of the shear-stress cospectra E_{-uv} is particularly remarkable. It is shown that the broad peak of E_{-uv} shown at $Ro = 0$ around $\lambda_z^+ \approx 100$, which corresponds to the near-wall structure, disappears at $Ro = 0.02$ (see the yellow profile), and at higher Ro the E_{-uv} profiles present negative values around $\lambda_z^+ \approx 200$. This wavelength corresponds to half of the roll-cell width, as already mentioned above.

As the Reynolds shear stress is closely related by the turbulent kinetic energy production as $pr_{k_i} = E_{-uv} dU/dy$, this behaviour of the shear-stress cospectra indicates a remarkable suppression of the turbulent energy production at small scales near the wall. In figure 13(a-2), the scale-by-scale turbulent energy production pr_{k_i} is shown to significantly decrease at small scales corresponding to the behaviour of E_{-uv} , and at relatively high Ro the energy production is nearly zero for $\lambda_z^+ \leq 100$ and even negative around $\lambda_z^+ \approx 200$, in contrast to the significant production at large scales. In general, the energy source at small scales is the energy cascade from larger scales;

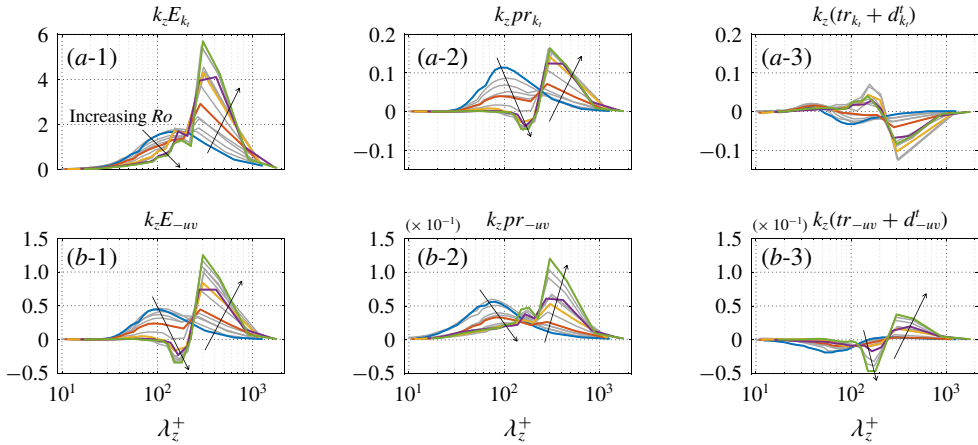


FIGURE 13. (Colour online) Premultiplied spectra of the turbulent kinetic energy and the Reynolds stress and their productions and turbulent transports at wall-normal location $\eta^+ = Re_\tau(1 + y/h) = 25$ for $Re = 1000$; (a-1) $k_z E_{k_i}$, (a-2) $k_z pr_{k_i}$, (a-3) $k_z (tr_{k_i} + d_{k_i}^t)$; (b-1) $k_z E_{-uv}$, (b-2) $k_z pr_{-uv}$, (b-3) $k_z (tr_{-uv} + d_{-uv}^t)$. The values are scaled by u_τ^2 for the premultiplied spectra $k_z E_{k_i}$ and $k_z E_{-uv}$ and by u_τ^4/ν for their scale-by-scale productions and turbulent transports. The grey lines represent all Ro cases at $Re = 1000$, and some representative cases are highlighted with the other colours; (blue) $Ro = 0$, (red) $Ro = 0.01$, (yellow) $Ro = 0.02$, (purple) $Ro = 0.04$, (green) $Ro = 0.09$. The black arrows indicate the direction of variation with increasing Ro .

the turbulent energy produced at large scales is cascaded to smaller scales and a part of such energy gain by interscale transfer is further transported elsewhere by the spatial transport, the residual of which is the local energy gain at small scales. Such residual energy gain by the transport terms $tr_{k_i} + d_{k_i}^t$ is also presented in figure 13(a-3) for comparison, and it is shown that the energy supply by $tr_{k_i} + d_{k_i}^t$ at relatively small scales $\lambda_z^+ \approx 200$ is nearly cancelled by the negative contribution by the production pr_{k_i} . Therefore, the negative energy production observed at relatively small scales in the near-wall region can be attributed to the significant energy suppression at small scales in the relatively high Ro regime.

Despite such negative values of the Reynolds stress cospectra E_{-uv} at relatively high Ro , the production of this component pr_{-uv} still shows positive contributions at all scales in all Ro cases, while the magnitude decreases with increasing Ro at small scales. On the contrary, the pr_{-uv} profiles even show a secondary positive peak at the wavelengths corresponding to the negative peak of the cospectra E_{-uv} , which is mainly due to the contribution by the additional shear stress production by the Coriolis force effect. What can be attributed to the negative E_{-uv} instead is the turbulent transports given in figure 13(b-3), which indicate a significant loss of the shear stress at these scales at relatively high Ro . As shown in figure 12(c), this negative contribution is mainly due to the spatial transport d_{-uv}^t which moves the energy from the near-wall to the core region at relatively small scales, and the interscale transport tr_{-uv} also transfers a certain amount of the energy from these scales towards larger scales. As shown in figure 13(b-3) the negative contribution by such turbulent transports $tr_{-uv} + d_{-uv}^t$ is significant enough to cancel the positive contribution by the production pr_{-uv} . Hence, it can be viewed that such significant turbulent transports of the Reynolds shear

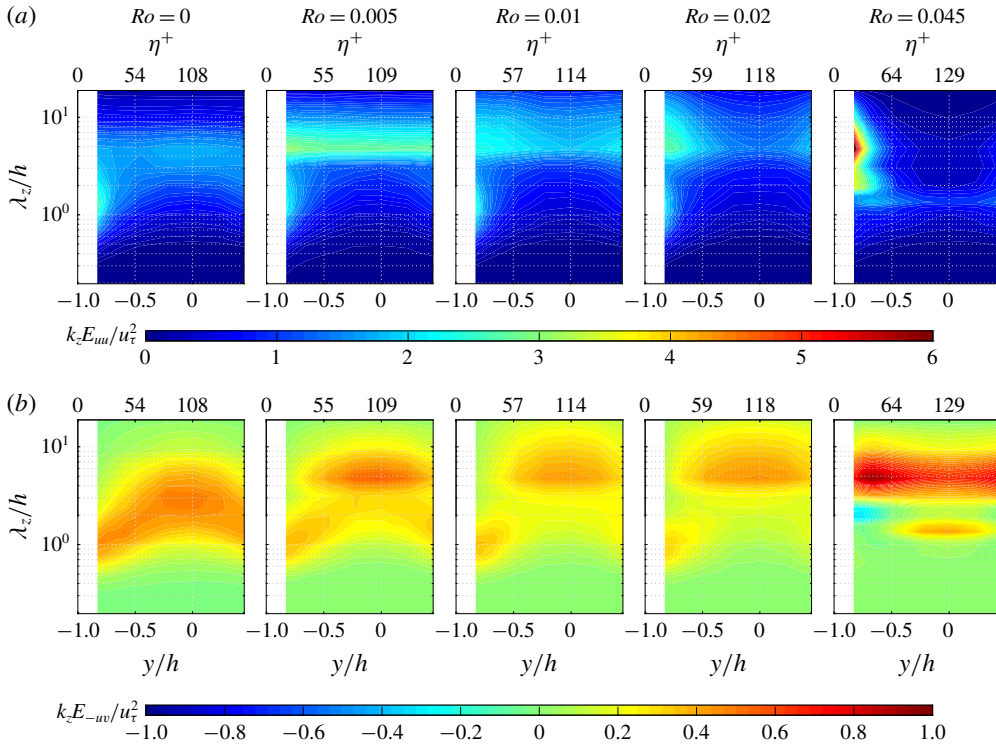


FIGURE 14. (Colour online) The space-scale ($y-\lambda_z$) diagrams of the premultiplied (a) streamwise Reynolds-normal-stress spectra $k_z E_{uu}$ and (b) Reynolds-shear-stress cospectra $k_z E_{-uv}$ at different Ro for $Re = 2000$. The values are scaled by u_τ^2 , and the distance from the wall at $y/h = -1$ in wall units, $\eta^+ = u_\tau(y+h)/\nu$, is also indicated on the upper abscissa of each panel.

stress eventually leads to the suppression of turbulent energy at small scales in the near-wall region.

6. The Reynolds number effect

6.1. The transition from the low to relatively high Ro regime at $Re = 2000$

In this section we shift our focus to the Reynolds number effect. Although the Ro range observed at higher Re is relatively narrow, for example $0 \leq Ro \leq 0.045$ at $Re = 2000$, the rotation-number dependencies of the flow structure similar to those observed at $Re = 1000$ are also observed at higher Reynolds numbers. As presented in figure 14, the Reynolds stress spectra at $Re = 2000$ indicate quite similar tendencies to the $Re = 1000$ case presented in figure 6, and the distributions of E_{uu} and E_{-uv} at $Ro = 0.045$ resemble those observed at $Ro = 0.055$ and 0.09 for $Re = 1000$.

The primary effect of increasing the Reynolds number is the enhanced scale separation between the large-scale structure in the channel core region and the near-wall structure. It is shown in figure 14 that in the non-rotating case at $Re = 2000$ the E_{uu} peaks corresponding to the near-wall structure and the large-scale structure in the core region can be separately observed, unlike the $Re = 1000$ case where only the near-wall peak is observed due to insufficient scale separation. Note that as indicated

on the upper abscissa of each panel in figure 14 the measured y -range in the cases of $Re = 2000$ starts at $\eta^+ = 27$ (slightly different depending on τ_w in each Ro case), and the near-wall peak E_{uu} is therefore only partly captured, for example, as observed around $\lambda_z/h \approx 1$ at $Ro = 0$, which corresponds to $\lambda_z \approx 100$. Such separation between the near-wall and channel-centre peaks is shown to be enhanced as the rotation number increases up to $Ro = 0.02$, as shown by the variation of the E_{uu} and E_{-uv} distributions for $0 \leq Ro \leq 0.02$. In particular, the near-wall and the large-scale peaks of the Reynolds-shear-stress cospectra E_{-uv} become clearly separated with increasing Ro . Comparing the variations of the E_{-uv} distribution at $Re = 1000$ (figure 6) and $Re = 2000$ (figure 14) one can see that the near-wall peak of E_{-uv} survives longer at $Re = 2000$, as it is still clearly observed at $Ro = 0.02$ in the case of $Re = 2000$ while in the $Re = 1000$ case the near-wall peak had already disappeared at $Ro = 0.02$ and the negative E_{-uv} region near the wall instead is about to emerge, which is the typical tendency of the E_{-uv} distribution for relatively high Ro .

Such variation of the Reynolds-shear-stress cospectra is closely related with the non-monotonic variation of the wall shear stress around $Ro \approx 0.02$ shown in figure 2(a). The wall shear stress can generally be split into its laminar value $\tau_{w,lam}$ and the increase from it due to the Reynolds shear stress distribution $\Delta\tau_w$ (Fukagata, Iwamoto & Kasagi 2002). In the RPCF configuration the Fukagata–Iwamoto–Kasagi (FIK) identity becomes

$$\tau_w = \underbrace{\mu \frac{U_w}{h}}_{\tau_{w,lam}} + \underbrace{\frac{\rho}{2h} \int_{-h}^h (-\langle uv \rangle) dy}_{\Delta\tau_w}, \tag{6.1}$$

which indicates that the Reynolds shear stress spatially averaged over the channel is equivalent to the increase of the wall shear stress from its laminar and no-rotation case value. In terms of the shear stress cospectra E_{-uv} the Reynolds-shear-stress contribution is written as follows:

$$\Delta\tau_w = \frac{\rho}{2h} \int_{-h}^h \int_0^\infty E_{-uv}(y, k_z) dk_z dy = \rho \int_0^\infty \left(\frac{1}{2h} \int_{-h}^h E_{-uv}(y, k_z) dy \right) dk_z, \tag{6.2}$$

and one can therefore see that the channel-averaged Reynolds-shear-stress cospectrum

$$\overline{E_{-uv}}(k_z) = \frac{1}{2h} \int_{-h}^h E_{-uv}(y, k_z) dy \tag{6.3}$$

represents the spectral content of the turbulent part of the wall shear stress $\Delta\tau_w$.

Figure 15 presents the profiles of $\overline{E_{-uv}}$ obtained by integrating the E_{-uv} distribution, comparing several different Ro cases at $Re = 1000$ and 2000 in the panels (a) and (b), respectively. As shown in figure 15(a), at the lower Reynolds number case ($Re = 1000$), the channel-averaged spectra $\overline{E_{-uv}}$ rapidly decrease at relatively small scale ($\lambda_z/h < 3$) with increasing Ro . Such a decrease at small scales is compensated by the significant increase at large scales $\lambda_z/h > 3$ and the overall value of τ_w thus increases monotonically with increasing Ro , as shown in figure 2(a). At higher Ro the contributions at such large scales continue to grow with increasing Ro , and the spectra at small scales present only slight contributions.

At the higher Reynolds number ($Re = 2000$), the contributions from small scales is generally more significant for all Ro cases compared to the corresponding profiles

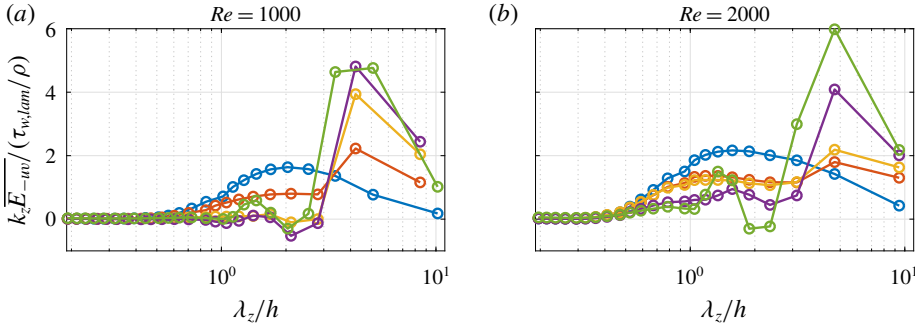


FIGURE 15. (Colour online) Premultiplied spectral content of the turbulent part of the wall shear stress $k_z \overline{E_{-uv}}$ at different rotation numbers around $Ro \approx 0.02$ for (a) $Re = 1000$ and (b) $Re = 2000$ with blue, $Ro = 0$; red, $Ro = 0.01$; yellow, $Ro = 0.02$; purple, $Ro = 0.03$; green, $Ro \approx 0.04$. The values are normalised by the laminar base flow value $\tau_{w,lam}/\rho$.

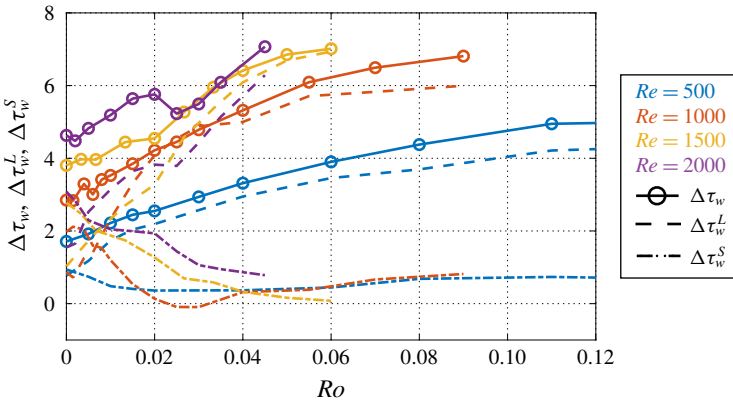


FIGURE 16. (Colour online) Variation of the wall shear stress $\Delta \tau_w$ with the rotation number Ro , comparing the large-scale part $\Delta \tau_w^L$ and small-scale part $\Delta \tau_w^S$ decomposed at $\lambda_z/h = 3$. The values are normalised by the laminar base-flow case value $\tau_{w,lam} = \mu U_w/h$.

at $Re = 1000$, and this is clearly due to the near-wall peak of the E_{-uv} distributions that survives up to higher Ro . In particular, between $Ro = 0.01$ and $Ro = 0.02$ the values of $\overline{E_{-uv}}$ at relatively small scales ($\lambda_z/h \leq 3$) are nearly unchanged while $\overline{E_{-uv}}$ at larger scales increases slightly. This is in contrast to the $Re = 1000$ cases where the spectrum E_{-uv} at small scales decreases considerably between $Ro = 0.01$ and 0.02 and the contributions from these scales are nearly zero at $Ro = 0.02$. However, between $Ro = 0.02$ and 0.03 at $Re = 2000$ the $\overline{E_{-uv}}$ profile is shown to decrease over a wide range of scales for $\lambda_z/h \leq 3$, corresponding to decay of the near-wall peak of the E_{-uv} distribution. Although $\overline{E_{-uv}}$ at larger scales somewhat increases between $Ro = 0.02$ and 0.03 , the integrated decrease at the small scales exceeds the increase at larger scales. This results in a decrease of the overall value of the wall shear stress around $Ro \approx 0.02$ shown in figure 2(a), and at higher Ro the wall shear stress τ_w increases again as $\overline{E_{-uv}}$ at large scales increases. This observation suggests that the non-monotonic variation of the wall shear stress around $Ro \approx 0.02$ is actually a narrow deficit, or valley, rather than a narrow peak, which is caused by a suppression of the near-wall structure.

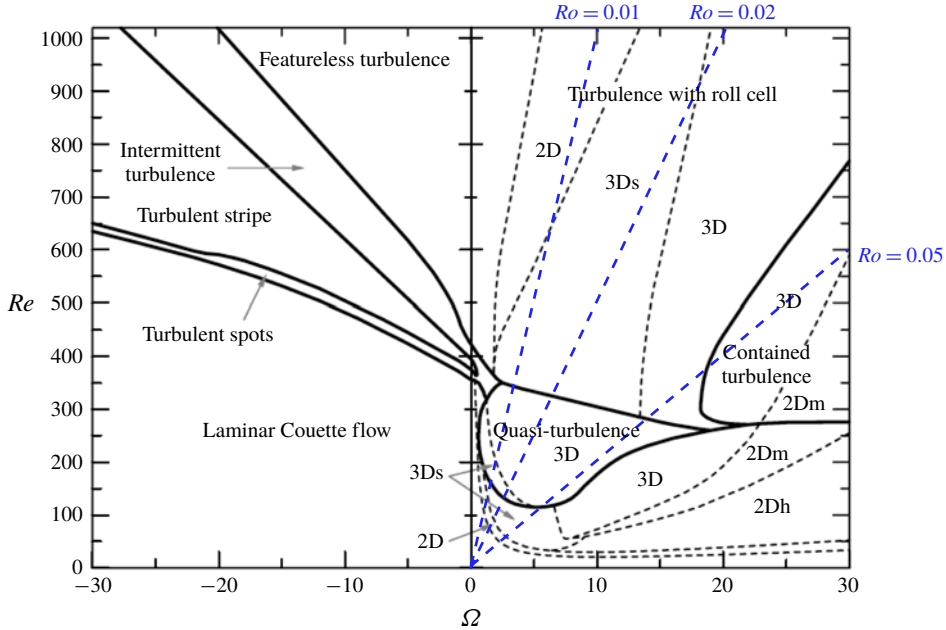


FIGURE 17. (Colour online) The Re - Ω diagram of flow regimes reported by Tsukahara *et al.* (2010) (reprinted with permission). The blue dashed lines newly added in the present study indicate $Ro(= \Omega/Re) = 0.01, 0.02$ and 0.05 .

Such a tendency may be more clearly depicted by splitting the turbulent part of the wall shear stress $\Delta\tau_w$ into its large- and small-scale part. As the large-scale peak of the cospectra E_{-uw} corresponding to the roll cells basically resides in $\lambda_z/h \geq 3$ (see figures 6c and 14b), we divide $\Delta\tau_w$ into $\Delta\tau_w^L$ and $\Delta\tau_w^S$ at $\lambda_z/h = 3$ as $\Delta\tau_w^L = \int_0^{2\pi/3h} \rho \overline{E_{-uw}} dk_z$ and $\Delta\tau_w^S = \Delta\tau_w - \Delta\tau_w^L$ and present in figure 16 their variations for all Re cases. As shown, the large-scale contribution $\Delta\tau_w^L$ increases while $\Delta\tau_w^S$ decreases with increasing Ro in all cases. However, only at $Re = 2000$ the variations of both $\Delta\tau_w^L$ and $\Delta\tau_w^S$ have a plateau around $Ro = 0.02$, after which $\Delta\tau_w^S$ significantly decreases. The effect of this rapid decrease of $\Delta\tau_w^S$ defeats the increase of the large-scale part $\Delta\tau_w^L$, which results in the appearance of the small valley of the total wall shear stress variation around $Ro \approx 0.03$.

As shown above, the flow structures of the turbulent RPCF in the low ($Ro \approx 0.01$) and relatively high ($Ro \gtrsim 0.05$) regimes are qualitatively different in that the turbulent near-wall structures are still retained in the former regime while not observed in the latter, and the rotation numbers $Ro \approx 0.02$ are in the intermediate range between them. Tsukahara *et al.* (2010) reported that in the turbulent regime the flow structure transitions from ‘Turbulence with roll cells’ to ‘Contained turbulence in roll cells’, as the rotation number increases. Their flow-structure diagram is reproduced in figure 17 with added dashed lines indicating $Ro = 0.01, 0.02$ and 0.05 . One can see here that the boundary between regimes of the turbulence with roll cell and the contained turbulence is located between $Ro = 0.02$ and $Ro = 0.05$, suggesting that the flow structure observed at relatively high Ro where the near-wall structures are suppressed corresponds to the contained turbulence observed by Tsukahara *et al.* (2010). It is also interesting to note that the low rotation numbers $Ro \approx 0.01$ fall in the regime

of the turbulence with two-dimensional (i.e. straight in the streamwise direction) roll cells, while the transitional range $Ro \approx 0.02$ lies in the regime of the turbulence with three-dimensional (wavy) roll cells. This is consistent with the numerical observation by Salewski & Eckhardt (2015) that the flow structure associated with the narrow peak of the wall shear stress variation includes a streamwise modulation of roll cells, resembling the wavy vortex flow identified in the Taylor–Couette system.

As mentioned in § 1, the RPCF corresponds to the Taylor–Couette flow with the ratio of the inner to outer radii being almost unity. Indeed, a similar non-monotonic behaviour of torque has been observed in small cylinder-gap cases where the rotation number (or the angular velocity ratio) is changed with a fixed Taylor number (Brauckmann, Eckhardt & Schumacher 2017). Apart from the small cylinder-gap cases, another interesting transition of flow structure is observed in the Taylor–Couette flow, where (as the Taylor number increases) the flow transitions from ‘Classical Taylor–Couette turbulence’ to ‘Ultimate regime’; in the former regime the bulk region of the cylinder gap is turbulent while the boundary layers on the inner and outer cylinder surfaces are still laminar, whereas in the latter both the bulk and boundary layers are turbulent (see, for instance, Grossmann, Lohse & Sun (2016), and references therein). The transition in the RPCF observed in the present study can be viewed as a similar phenomenon to such transition in the Taylor–Couette system in that the flow structure near the wall qualitatively changes its behaviour. However, it is unclear from the present experimental results whether the near-wall region is relaminarised in the turbulent RPCF due to the limited measurement range (e.g. $\eta^+ \geq 27$ at $Re = 2000$). Although both the results by Salewski & Eckhardt (2015) and the present study observe the sudden drop of the wall shear stress approximately at $Ro = 0.02$ at different Reynolds numbers, the Reynolds numbers investigated so far for the RPCF are still limited to low Re range (the highest is $Re = 5200$ numerically observed by Salewski & Eckhardt (2015), roughly corresponds to $Re_\tau \approx 230$ at no system rotation), and it would be an interesting future task, for example, to investigate whether the near-wall region of the contained turbulence transitions to turbulence again by increasing the Reynolds number, similarly to the transition to the ultimate regime in the Taylor–Couette turbulence.

6.2. The Reynolds stress transport caused by interaction between the roll cells and smaller-scale turbulence

As shown above, the rotation numbers around $Ro \approx 0.02$ are in the transitional range between the low ($Ro \approx 0.01$) and relatively high ($Ro \gtrsim 0.05$) rotation number regimes, and it is noteworthy here that the reversed mean velocity gradient appears in this Ro range as shown in figure 2(b). As mentioned in § 1 the negative mean velocity gradient means that the Reynolds shear stress $\langle -uv \rangle$ locally exceeds the wall shear stress τ_w (see (2.4)), and furthermore the value of τ_w is equivalent to the $\langle -uv \rangle$ value averaged across the channel as indicated by the FIK identity, equation (6.1). Therefore, the appearance of the reversed mean velocity gradient depends on the shape of the $\langle -uv \rangle$ profile rather than the local magnitude of $\langle -uv \rangle$ at the channel centre, which indicates that the spatial transport of $\langle -uv \rangle$ across the channel is closely related.

Such a connection between the negative mean velocity gradient and the Reynolds-shear-stress transport was already suggested in our previous study (Kawata & Alfredsson 2016b), where we reported that in the cases where the reversed mean velocity gradient is observed, significant spatial transport of the Reynolds shear stress $\langle -uv \rangle$ towards the channel centre is found. This is reproduced in figure 18(a), where

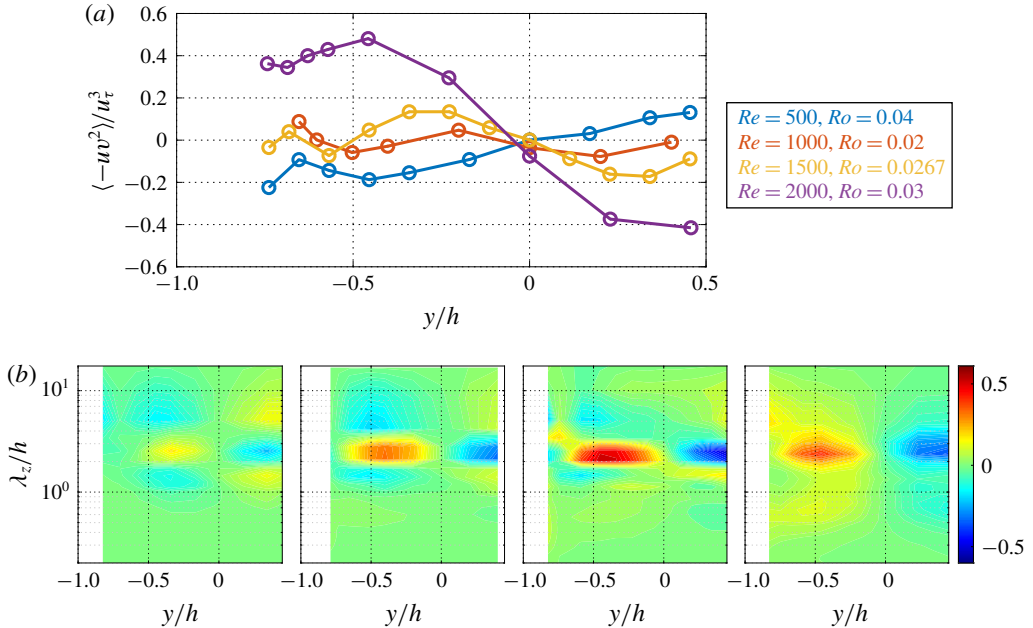


FIGURE 18. (Colour online) The turbulent spatial flux of the Reynolds-shear-stress $\langle -uv \rangle$ around $Ro \approx 0.02$ for different Reynolds numbers; (a) the ‘total’ turbulent spatial flux $\langle -uv^2 \rangle$; (b) the space-scale $(y-\lambda_z)$ diagrams of their premultiplied spectral content $k_z E_{-uvv}$ at (from left to right) $Re = 500$ and $Ro = 0.04$, $Re = 1000$ and $Ro = 0.02$, $Re = 1500$ and $Ro = 0.0267$, $Re = 2000$ and $Ro = 0.03$. The values are scaled by u_τ^2 .

the profiles of the shear-stress transport $\langle -uv^2 \rangle$ is compared for the cases around $Ro \approx 0.02$ at different Re where the profile of dU/dy presented in figure 2(b) takes the minimum at each Re . It is seen here that for the lowest Re case, $Re = 500$ and $Ro = 0.04$, where dU/dy is positive, the $\langle -uv^2 \rangle$ profile shows a wallward $\langle -uv \rangle$ transport from the channel centre to the near-wall region. However, the direction of the $\langle -uv \rangle$ transport is reversed as Re increases, and at higher Reynolds number cases, $Re = 1500$ and 2000 , where dU/dy at the channel centre is clearly negative (see figure 2b), the $\langle -uv^2 \rangle$ profiles indicate significant transport of $\langle -uv \rangle$ from the near-wall to the central region of the channel.

The spectral contents of such spatial transports of $\langle -uv \rangle$ are presented in figure 18(b). In the lowest Re case, $Re = 500$ and $Ro = 0.04$, E_{-uvv} presents the typical tendency of the roll-cell-driven transport at relatively high Ro , presenting both inward and outward transports at different scales. Integrating this distribution over the λ_z range investigated yields the net spatial flux from the central to the near-wall region of the channel as already presented in figure 18(a). However, in the higher Re cases the spatial flux towards the channel centre at the middle scales, i.e. $\lambda_z/h \approx 2.5$ approximately corresponding to half of the roll-cell width, is shown to be enhanced with increasing Re while the transports in the opposite direction at larger and smaller scales are suppressed instead. In the highest Reynolds number case, $Re = 2000$ and $Ro = 0.03$, the transports towards the near-wall region disappear and the E_{-uvv} distribution presents transport towards the channel centre at all scales, which results in a significant net transport presented in figure 18(a). Such tendency of the shear-stress transport is qualitatively different from both the non-rotating plane

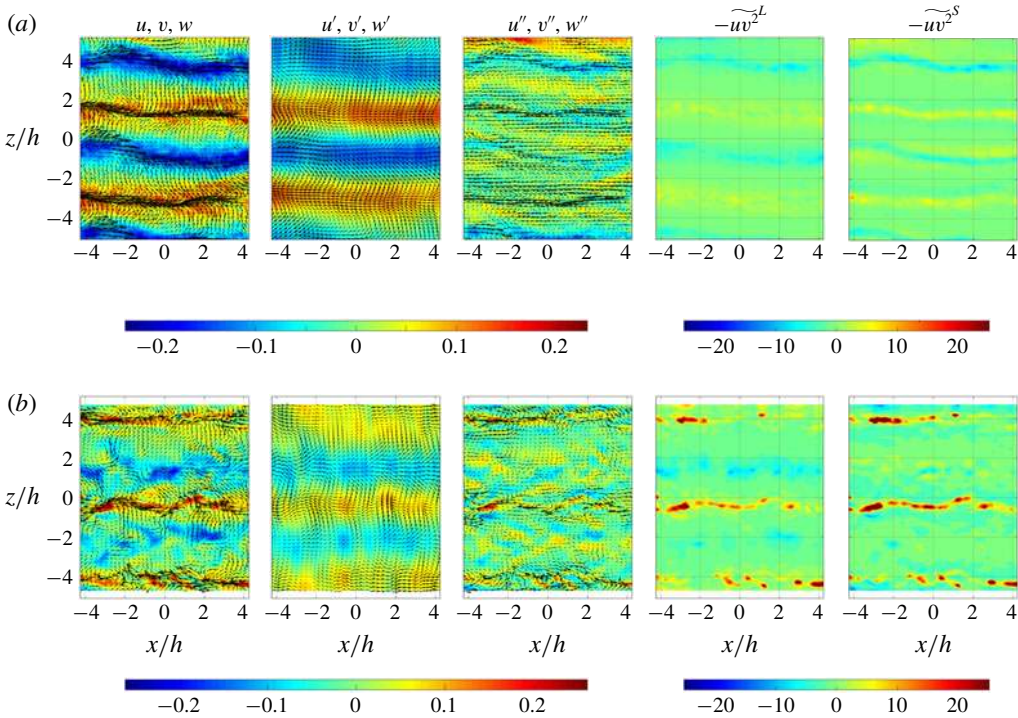


FIGURE 19. (Colour online) Instantaneous decomposed velocity fields and corresponding instantaneous spatial transport of the Reynolds-shear-stress $-\widetilde{uvv}^L$ and $-\widetilde{uvv}^S$ at the wall-normal location $y/h \approx -0.4$, comparing the (a) $Re = 500$ and $Ro = 0.04$ with the (b) $Re = 2000$ and $Ro = 0.03$ cases. The velocity fields are decomposed at (a) $\lambda_z/h \approx 3.1$ and (b) 3.4, so that the large-scale part includes only the largest E_{-uv} peak corresponding to the roll cells. The wall-normal location presented here is (a) $y/h = -0.35$ and (b) $y/h = -0.45$ depending on the location of the E_{-uv} peak in each case. The colours and black arrows in the figures of the decomposed velocity fields represent the values of the corresponding wall-normal velocity component (v, v' , or v'') scaled by U_w and the pattern of the in-plane velocity vectors, respectively, and the black arrows are shown downsampled and with the same length scale as in figures 4 and 5. The values of $-\widetilde{uvv}^L$ and $-\widetilde{uvv}^S$ are scaled by u_*^3 .

Couette turbulence and the roll-cell-dominating relatively high- Ro case, and observed only at the transitional rotation numbers around $Ro \approx 0.02$ at high enough Reynolds numbers.

In figure 19 the instantaneous velocity fields at the wall-normal locations $y/h \approx -0.4$ are compared for $Re = 500$ and $Ro = 0.04$ as well as $Re = 2000$ and $Ro = 0.03$. In both cases large-scale roll cells are clearly captured, and the flow structure is decomposed with cutoff wavelength around $\lambda_z/h \approx 3$ so that the large-scale part covers only the distinct spectra peak corresponding to the roll cells and the rest, smaller-scale structures are included in the small-scale part. It is shown here that similar large-scale roll cells are extracted in both cases and the small-scale part becomes more chaotic at higher Reynolds number.

The decomposed instantaneous spatial fluxes of the Reynolds shear stress, i.e. $-\widetilde{uvv}^L$ and $-\widetilde{uvv}^S$ are also presented in figure 19 for each case. Here $-\widetilde{uvv}^L$ and

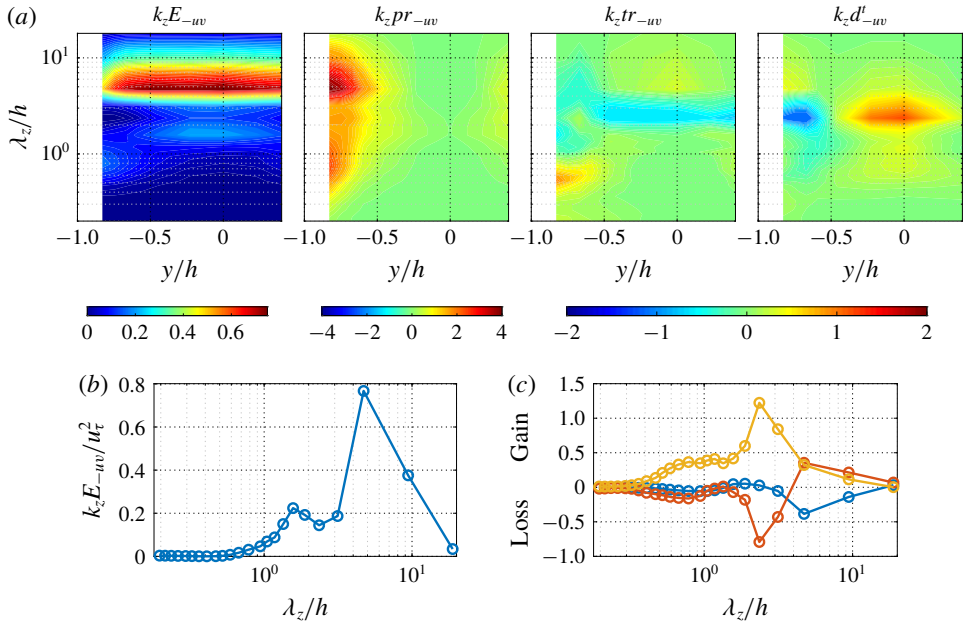


FIGURE 20. (Colour online) (a) Space–wavelength (y – λ_z) diagrams of the premultiplied Reynolds-shear-stress cospectra and their scale-by-scale production, interscale transport, and turbulent spatial transport at $Ro = 0.03$ and $Re = 2000$. (b,c) The profiles at the channel centre of (b) the Reynolds-shear-stress cospectra $k_z E_{-uv}$ and (c) the scale-by-scale production and turbulent transports; (blue) production $k_z pr_{-uv}$, (red) $k_z tr_{-uv}$, (yellow) $k_z d_{-uv}^l$. The values are scaled by u_τ^2 for $k_z E_{-uv}$ and u_τ^3/h for the scale-by-scale production and the turbulent transports.

$-\widetilde{uv}^S$ are defined based on (3.12) and (3.13) as

$$-\widetilde{uv}^L = -u'v'^2 - u'v'v'' - u''v'v'' - u'v''^2, \tag{6.4}$$

$$-\widetilde{uv}^S = -u''v''^2 - u''v''v' - u'v''v' - u''v'^2, \tag{6.5}$$

respectively, and physically represent the instantaneous flux of $\langle -u'v' \rangle$ and $\langle -u''v'' \rangle$ in the wall-normal direction, respectively. It can be seen here that in both cases the positive regions of both the $-\widetilde{uv}^L$ and $-\widetilde{uv}^S$ distributions correspond well to the large-scale roll-cells' upwelling (the regions of $v' > 0$), indicating that both $\langle -u'v' \rangle$ and $\langle -u''v'' \rangle$ are carried towards the core region of the channel by secondary motion of the roll cells. Such Reynolds stress flux by the roll-cells' upwelling is shown to be enhanced at higher Reynolds number, resulting in a significant $\langle -uv \rangle$ flux towards the channel centre presented in figure 18(a). On the other hand, in the roll-cells' downwelling ($v' < 0$) region the magnitude of both $-\widetilde{uv}^L$ and $-\widetilde{uv}^S$ are not significantly changed by increase of Re .

The contribution by such spatial transport of the Reynolds shear stress is further examined for the case of $Re = 2000$ and $Ro = 0.03$ in figure 20, by comparison with the scale-by-scale production and interscale transport. Figure 20(a) gives the space–wavelength diagrams of the Reynolds-shear-stress cospectrum E_{-uv} and its scale-by-scale production and turbulent transports, and their profiles at the channel

centre $y/h = 0$ are also presented in panels (b,c). The distribution of the cospectrum E_{-uv} in panel (a) weakly indicates the typical tendency of the relatively high Ro regime, showing the distinct peak at large scales with a secondary peak at relatively small scales $\lambda_z/h \approx 1.6$ at the channel centre, while the near-wall peak is also still found. The scale-by-scale production pr_{-uv} is significant in the outer region of the channel $y/h \leq -0.5$ over a wide range of scales, which is due to the production by the mean shear at small scales and the additional production by the Coriolis force at large scales. In the channel central region, on the other hand, the production is nearly zero throughout the λ_z/h range despite the significant magnitude of $\langle -uv \rangle$ at the channel centre. The interscale transport tr_{-uv} is shown to inversely transfer $\langle -uv \rangle$ from $\lambda_z/h \leq 2$ to larger scales around the channel centre. The spatial transport $d_{-uv}^t = -dE_{-uv}/dy$ brings the Reynolds shear stress from the near-wall to core region of the channel for a wide range of scales, corresponding to the E_{-uv} distribution presented in figure 18. Combining the distributions of pr_{-uv} , tr_{-uv} and d_{-uv}^t , one can interpret that the Reynolds shear stress produced in the near-wall region of the channel over a wide range of scales is spatially transported towards the central region by d_{-uv}^t , and further transferred to larger scales by tr_{-uv} .

Further detailed balance between the productions and turbulent transports at the channel centre is given in figure 20(b,c). The profile of E_{-uv} shows a primary peak located at $\lambda_z/h \approx 4.7$ with a secondary peak at the middle scale $\lambda_z/h \approx 1.6$, and integrating this E_{-uv} profile over the investigated λ_z range yields the overall Reynolds shear stress that exceeds the wall shear stress. Despite such significant local E_{-uv} at the channel centre, the production pr_{-uv} is nearly zero for $\lambda_z/h \leq 3$ and even negative at larger scales that correspond to the primary peak location of E_{-uv} . Such negative production is due to the negative mean velocity gradient around the channel centre. The spatial transport d^t presents significant positive contributions throughout the investigated λ_z range, and the interscale transport tr_{-uv} is shown to remove a part of such positive gain by d_{-uv}^t mainly from $\lambda_z/h \approx 2.3$ and to bring it to larger scales, which compensates the negative contribution by the production pr_{-uv} . Thus, the significant Reynolds shear stress at the channel centre is mainly maintained by the spatial transport from the near-wall region of the channel, which are as discussed above likely caused by a scale interaction whereby the near-wall structures are lifted up by secondary motion of the roll cells towards the core region of the channel.

As shown above, the significant Reynolds shear stress in the central region of the channel is mainly maintained by the spatial transport from the near-wall region, which is driven by the secondary motion of the roll cells as observed in figure 19(b). One may find that the instantaneous distributions of $-\widetilde{uvv}^L$ and $-\widetilde{uvv}^S$ in figure 19(b) are quite similar despite the fact that they represent the Reynolds-shear-stress flux at different scales. As shown by (6.4) and (6.5), $-\widetilde{uvv}^L$ and $-\widetilde{uvv}^S$ have their second and third terms in common (the second term of the former is the third term of the latter, and vice versa). Among them, $-u''v'v''$ have a significant contribution to both $-\widetilde{uvv}^L$ and $-\widetilde{uvv}^S$ in the case of $Re = 2000$ and $Ro = 0.03$, and thus their distributions become similar. Given that in this higher Re case the near-wall structure is still retained despite the existence of the roll cells as indicated by the E_{-uv} distribution in figure 20(a), such contribution by $-u''v'v''$ may indicate the interaction between the near-wall structures and the roll cells, where the former (responsible for $-u''v''$) is lifted up from the near-wall towards the central region of the channel by upwelling secondary motion of the roll cells (v'). In figure 19(b) it is indeed shown that the positive regions of both $-\widetilde{uvv}^L$ and $-\widetilde{uvv}^S$ correspond well to the roll-cells' upwelling (i.e. the region of $v' > 0$), and include a somewhat chaotic distribution with small-scale patterns. Hence,

the remarkable spatial transport of the Reynolds shear stress observed in the case of $Re = 2000$ and $Ro = 0.03$ can be interpreted as the consequence of interaction between the near-wall structures and the roll cells.

Although the contributions by the other terms in the transport equation, such as the pressure-strain correlation, the viscous dissipation and the pressure and viscous diffusions, are not included in the discussion above, they are not likely to positively contribute to the Reynolds-shear-stress transport in the channel-core region. As already discussed in § 5.2, in non-rotating wall turbulence the pressure-strain correlation acts as the main sink of the Reynolds shear stress, instead of the viscous dissipation that has only a minor contribution throughout the channel, and earlier studies on the rotating Poiseuille flow showed that such tendencies are basically the same even under a significant destabilising effect of system rotation. The pressure-strain term is, therefore, hardly expected to act as a gain. The effect by the pressure transport is usually limited to the vicinity of the wall, and so is the contribution by the viscous diffusion if the Reynolds number is sufficiently high. Hence, the turbulent spatial transport of $\langle -uv \rangle$ is the most likely effect resulting in the significant Reynolds shear stress at the channel centre.

7. Conclusion

In this paper, we have investigated the role of scale interaction between the roll cells and turbulence in turbulent RPCF through the scale-by-scale analysis of the Reynolds stress transport introduced by Kawata & Alfredsson (2018), with a particular interest in the rotation number effect to attenuate small-scale structures and the significant transport of momentum and turbulence around $Ro \approx 0.02$ at high enough Reynolds numbers. It has been revealed that with increasing Ro the turbulent RPCF transitions from the low- Ro regime ($Ro \approx 0.01$), where the turbulent near-wall structures coexist with the large-scale roll cells, to the relatively high- Ro regime ($Ro \gtrsim 0.05$), where the roll cells dominate the flow and the near-wall structures are significantly suppressed. The non-monotonic behaviour of the wall shear stress around $Ro \approx 0.02$ observed in the earlier studies (Salewski & Eckhardt 2015; Kawata & Alfredsson 2016b) is a consequence of such a transition. Such flow structures at the low ($Ro \approx 0.01$) and relatively high ($Ro \gtrsim 0.05$) rotation numbers correspond to ‘Turbulence with roll cell’ and ‘Turbulence contained in roll cell’, respectively, as identified by Tsukahara *et al.* (2010). In the transitional Ro range between these two different regimes $Ro \approx 0.02$, the interaction between the roll cells and turbulence is observed where the near-wall structures are moved towards the central region of the channel by secondary motion of the roll cells, which results in significant spatial transport of the Reynolds shear stress towards the channel centre. Such interaction between the roll cells and the turbulent near-wall structures becomes increasingly significant with increasing Reynolds number, and leads to the appearance of a reversed mean velocity gradient at the channel centre at high enough Reynolds numbers.

Although the mechanism of the Ro effect to suppress small-scale structures is still not fully elucidated, the scale-by-scale analysis of the Reynolds stress transport has illuminated the essential difference between the low ($Ro \approx 0.01$) and relatively high ($Ro \gtrsim 0.05$) rotation-number regimes. At low rotation numbers the additional Reynolds stress production by the Coriolis force effect is comparable to the primary productions by the mean shear, and such productions by different effects occur at different scales, by which both the roll cells and the near-wall structures are maintained. At the relatively high rotation numbers, on the other hand, the Reynolds stress productions,

dominated by the Coriolis force effect due to the zero-absolute-vorticity state, occur only at large scales corresponding to the roll cell, and the energies are not directly supplied to small scales from the mean flow. The scale-by-scale budget in this *Ro* regime is also characterised by remarkable interscale and spatial transports of the Reynolds stresses mainly driven by secondary motion of the roll cells, rather than by interaction between the roll cells and turbulence. In particular, the significant transports of the Reynolds shear stress results in the negative cospectra E_{-uv} at relatively small scales in the near-wall region. This directly leads to the negative turbulent energy production at small scales in the near-wall region, which can be attributed to the suppression of the turbulent near-wall structures in this *Ro* regime.

Acknowledgements

The experimental part of this work was done when T.K. was a postdoctoral researcher at KTH supported by The Carl Tryggers Foundation for Scientific Research and KTH. Most of the analysis and the writing of the paper were done when T.K. was a visiting researcher at KTH supported by a Grant-In-Aid for Research Fellow No. 17J04115 by the Japan Society for the Promotion of Science (JSPS). H.A. was partially supported by the Swedish Research Council (VR) HIRETURN project.

Appendix A. Evaluation of $\partial/\partial y$ -related terms in Tr_{ij}

As mentioned in § 3.4, the instantaneous velocity gradient in the wall-normal direction cannot be directly measured by the present stereo-PIV measurement and is, therefore, omitted for Tr_{uu} . Hence, the scale-by-scale interscale transport tr_{uu} presented in § 5 was evaluated based on Tr_{uu} approximated as follows:

$$Tr_{uu} \approx -2 \left(\left\langle u''^2 \frac{\partial u'}{\partial x} \right\rangle + \left\langle u'' w'' \frac{\partial u'}{\partial z} \right\rangle \right) + 2 \left(\left\langle u'^2 \frac{\partial u''}{\partial x} \right\rangle + \left\langle u' w' \frac{\partial u''}{\partial z} \right\rangle \right). \quad (A 1)$$

On the other hand, the wall-normal gradients included in Tr_{vv} are $\partial v'/\partial y$ and $\partial v''/\partial y$, which are easily obtained via the continuity equation. The Tr_{-uv} includes $\partial u'/\partial y$ and $\partial u''/\partial y$ as well as $\partial v'/\partial y$ and $\partial v''/\partial y$, and these terms can also be obtained; for example, the term including $\partial u'/\partial y$ is converted as

$$\left\langle v''^2 \frac{\partial u'}{\partial y} \right\rangle = \frac{d\langle u' v'' v'' \rangle}{dy} - \left\langle u' \frac{\partial v''^2}{\partial y} \right\rangle = \frac{d\langle u' v'' v'' \rangle}{dy} - 2 \left\langle u' v'' \frac{\partial v''}{\partial y} \right\rangle, \quad (A 2)$$

and the continuity equation is used to obtain the wall-normal derivative. The term with $\partial u''/\partial y$ is also obtained in a similar manner. Thus, Tr_{vv} and Tr_{-uv} are obtained with all the terms evaluated as

$$Tr_{vv} = -2 \left(\left\langle u'' v'' \frac{\partial v'}{\partial x} \right\rangle - \left\langle v''^2 \left(\frac{\partial u'}{\partial x} + \frac{\partial w'}{\partial z} \right) \right\rangle + \left\langle v'' w'' \frac{\partial v'}{\partial z} \right\rangle \right) + 2 \left(\left\langle u' v' \frac{\partial v''}{\partial x} \right\rangle - \left\langle v'^2 \left(\frac{\partial u''}{\partial x} + \frac{\partial w''}{\partial z} \right) \right\rangle + \left\langle u' w' \frac{\partial v''}{\partial z} \right\rangle \right), \quad (A 3)$$

$$\begin{aligned}
 Tr_{-uv} = & \left\langle u''^2 \frac{\partial v'}{\partial x} \right\rangle - \left\langle u'' v'' \left(\frac{\partial u'}{\partial x} + \frac{\partial w'}{\partial z} \right) \right\rangle + \left\langle u'' w'' \frac{\partial v'}{\partial z} \right\rangle \\
 & + \left\langle u'' v'' \frac{\partial u'}{\partial x} \right\rangle + \left(\frac{d\langle u' v'' v'' \rangle}{dy} + 2 \left\langle u' v'' \left(\frac{\partial u''}{\partial x} + \frac{\partial w''}{\partial z} \right) \right\rangle \right) + \left\langle v'' w'' \frac{\partial u'}{\partial z} \right\rangle \\
 & - \left\langle u''^2 \frac{\partial v''}{\partial x} \right\rangle + \left\langle u' v' \left(\frac{\partial u''}{\partial x} + \frac{\partial w''}{\partial z} \right) \right\rangle - \left\langle u' w' \frac{\partial v''}{\partial z} \right\rangle \\
 & - \left\langle u' v' \frac{\partial u''}{\partial x} \right\rangle - \left(\frac{d\langle u' v' v' \rangle}{dy} + 2 \left\langle u' v' \left(\frac{\partial u'}{\partial x} + \frac{\partial w'}{\partial z} \right) \right\rangle \right) - \left\langle v' w' \frac{\partial u''}{\partial z} \right\rangle.
 \end{aligned}
 \tag{A 4}$$

Appendix B. Instantaneous interscale flux $\tilde{T}r_{ij}$

The transport equations of the instantaneous Reynolds stresses $u'_i u'_j$ and $u''_i u''_j$ can also be derived by considering the transport equation of u'_i and u''_i , and thereby the instantaneous interscale flux of the Reynolds stresses between the large- and small-scale side of the velocity field is also defined. Filtering equation (3.5) one obtains the equations of u'_i and u''_i ,

$$\frac{\partial u'_i}{\partial t} + U_k \frac{\partial u'_i}{\partial x_k} + u'_k \frac{\partial U_i}{\partial x_k} + \left(u_k \frac{\partial u_i}{\partial x_k} \right)' - \frac{\partial \langle u_i u_j \rangle}{\partial x_k} = -\frac{1}{\rho} \frac{\partial p'}{\partial x_i} + \nu \frac{\partial^2 u'_i}{\partial x_k^2}, \tag{B 1}$$

$$\frac{\partial u''_i}{\partial t} + U_k \frac{\partial u''_i}{\partial x_k} + u''_k \frac{\partial U_i}{\partial x_k} + \left(u_k \frac{\partial u_i}{\partial x_k} \right)'' = -\frac{1}{\rho} \frac{\partial p''}{\partial x_i} + \nu \frac{\partial^2 u''_i}{\partial x_k^2}. \tag{B 2}$$

Note here that the Reynolds stress term $\partial \langle u_i u_j \rangle / \partial x_k$ does not appear in the small-scale velocity equation (B 2) as the Reynolds stress is a mean quantity, and the Coriolis force term is omitted here considering the general case of turbulence. Based on these equations one can easily obtain the transport equations of the instantaneous Reynolds stresses,

$$\begin{aligned}
 \frac{\partial u'_i u'_j}{\partial t} + U_k \frac{\partial u'_i u'_j}{\partial x_k} = & \widetilde{P}_{ij}^L - \widetilde{\Theta}_{ij}^L + \widetilde{\Phi}_{ij}^L + \widetilde{D}_{ij}^{v,L} + \widetilde{D}_{ij}^{t,L} - \widetilde{T}r_{ij} \\
 & + \left(u_k \frac{\partial u_i}{\partial x_k} \right)'' u'_j + \left(u_k \frac{\partial u_j}{\partial x_k} \right)'' u'_i + \frac{\partial \langle u_i u_k \rangle}{\partial x_k} u'_i + \frac{\partial \langle u_j u_k \rangle}{\partial x_k} u'_i,
 \end{aligned}
 \tag{B 3}$$

$$\begin{aligned}
 \frac{\partial u''_i u''_j}{\partial t} + U_k \frac{\partial u''_i u''_j}{\partial x_k} = & \widetilde{P}_{ij}^S - \widetilde{\Theta}_{ij}^S + \widetilde{\Phi}_{ij}^S + \widetilde{D}_{ij}^{v,S} + \widetilde{D}_{ij}^{t,S} + \widetilde{T}r_{ij} \\
 & + \left(u_k \frac{\partial u_i}{\partial x_k} \right)' u''_j + \left(u_k \frac{\partial u_j}{\partial x_k} \right)' u''_i,
 \end{aligned}
 \tag{B 4}$$

where the first six terms on the right-hand side of each equation are the instantaneous production, viscous dissipation, . . . , interscale flux which are defined by removing the $\langle \rangle$ of the corresponding averaged term in (3.6) and (3.7). The other terms are, on the other hand, the additional terms that do not appear in the averaged transport equations as their averaged values are zero. It should be noted that $\widetilde{P}_{ij}^{L(S)}$, $\widetilde{\Theta}_{ij}^{L(S)}$, . . . , $\widetilde{T}r_{ij}$ represent the instantaneous production, dissipation, . . . , interscale flux that are observed from the frame of reference convecting with the mean flow, as the left-hand sides of (B 3) and (B 4) are expressed by $\partial/\partial t + U_k \partial/\partial x_k$.

The instantaneous interscale fluxes $\tilde{T}r_{vv}$ and $\tilde{T}r_{-uv}$ presented in figures 5(d) and 5(e) were obtained as follows:

$$\begin{aligned} \tilde{T}r_{vv} = & -2 \left(u'' v'' \frac{\partial v'}{\partial x} - v'^2 \left(\frac{\partial u'}{\partial x} + \frac{\partial w'}{\partial z} \right) + v'' w'' \frac{\partial v'}{\partial z} \right) \\ & + 2 \left(u' v' \frac{\partial v''}{\partial x} - v'^2 \left(\frac{\partial u''}{\partial x} + \frac{\partial w''}{\partial z} \right) + v' w' \frac{\partial v''}{\partial z} \right), \end{aligned} \quad (\text{B } 5)$$

$$\begin{aligned} \tilde{T}r_{-uv} \approx & u'^2 \frac{\partial v'}{\partial x} - u'' v'' \left(\frac{\partial u'}{\partial x} + \frac{\partial w'}{\partial z} \right) + u'' w'' \frac{\partial v'}{\partial z} \\ & + u'' v'' \frac{\partial u'}{\partial x} + \left(\frac{d\langle u' v'' v'' \rangle}{dy} + 2u' v'' \left(\frac{\partial u''}{\partial x} + \frac{\partial w''}{\partial z} \right) \right) + v'' w'' \frac{\partial u'}{\partial z} \\ & - u'^2 \frac{\partial v''}{\partial x} + u' v' \left(\frac{\partial u''}{\partial x} + \frac{\partial w''}{\partial z} \right) - u' w' \frac{\partial v''}{\partial z} \\ & - u' v' \frac{\partial u''}{\partial x} - \left(\frac{d\langle u'' v' v' \rangle}{dy} + 2u'' v' \left(\frac{\partial u'}{\partial x} + \frac{\partial w'}{\partial z} \right) \right) - v' w' \frac{\partial u''}{\partial z}. \end{aligned} \quad (\text{B } 6)$$

Here, $v'' v'' \partial u' / \partial y$ and $v' v' \partial u'' / \partial y$ (corresponding, respectively, to the 5th and 11th term of $\tilde{T}r_{-uv}$) are approximated as

$$v'^2 \frac{\partial u'}{\partial y} \approx \frac{d\langle u' v'' v'' \rangle}{dy} + 2u' v'' \left(\frac{\partial u''}{\partial x} + \frac{\partial w''}{\partial z} \right), \quad (\text{B } 7)$$

$$v'^2 \frac{\partial u''}{\partial y} \approx \frac{d\langle u'' v' v' \rangle}{dy} + 2u'' v' \left(\frac{\partial u'}{\partial x} + \frac{\partial w'}{\partial z} \right). \quad (\text{B } 8)$$

REFERENCES

- BECH, K. H. & ANDERSSON, H. I. 1996 Secondary flow in weakly rotating turbulent plane Couette flow. *J. Fluid Mech.* **317**, 195–214.
- BECH, K. H. & ANDERSSON, H. I. 1997 Turbulent plane Couette flow subject to strong system rotation. *J. Fluid Mech.* **347**, 289–314.
- BRADSHAW, P. 1969 The analogy between streamline curvature and buoyancy in turbulent shear flow. *J. Fluid Mech.* **36**, 177–191.
- BRAUCKMANN, H. J., ECKHARDT, B. & SCHUMACHER, J. 2017 Heat transport in Rayleigh–Bénard convection and angular momentum transport in Taylor–Couette flow: a comparative study. *Phil. Trans. R. Soc. Lond. A* **375**, 20160079.
- BRAUCKMANN, H. J., SALEWSKI, M. & ECKHARDT, B. 2016 Momentum transport in Taylor–Couette flow with vanishing curvature. *J. Fluid Mech.* **790**, 419–452.
- BRETHOUWER, G. 2017 Statistics and structure of spanwise rotating turbulent channel flow at moderate Reynolds numbers. *J. Fluid Mech.* **828**, 424–458.
- CHO, M., HWANG, Y. & CHOI, H. 2018 Scale interactions and spectral energy transfer in turbulent channel flow. *J. Fluid Mech.* **854**, 474–504.
- CIMARELLI, A., DE ANGELIS, E. & CASCIOLA, C. M. 2013 Paths of energy in turbulent channel flows. *J. Fluid Mech.* **715**, 436–451.
- CIMARELLI, A., DE ANGELIS, E., JIMÉNEZ, J. & CASCIOLA, C. M. 2016 Cascades and wall-normal fluxes in turbulent channel flows. *J. Fluid Mech.* **796**, 417–436.
- DALY, C. A., SCHNEIDER, T. M., SCHLATTER, P. & PEAKE, N. 2014 Secondary instability and tertiary states in rotating plane Couette flow. *J. Fluid Mech.* **761**, 27–61.

- DOGAN, E., ÖRLÜ, R., GATTI, D., VINUESA, R. & SCHLATTER, P. 2019 Quantification of amplitude modulation in wall-bounded turbulence. *Fluid Dyn. Res.* **51**, 011408.
- DUBRULLE, B., DAUCHOT, O., DAVIAUD, F., LONGARETTI, P.-Y., RICHARD, D. & ZAHN, J.-P. 2005 Stability and turbulent transport in Taylor–Couette flow from analysis of experimental data. *Phys. Fluids* **17** (9), 095103.
- FAISST, H. & ECKHARDT, B. 2000 Transition from the Couette–Taylor system to the plane Couette system. *Phys. Rev. E* **61**, 7227–7230.
- FUKAGATA, K., IWAMOTO, K. & KASAGI, N. 2002 Contribution of Reynolds stress distribution to the skin friction in wall-bounded flows stress distribution to the skin friction in wall-bounded flows. *Phys. Fluids* **14** (11), L73–L76.
- GAI, J., XIA, Z., CAI, Q. & CHEN, S. 2016 Turbulent statistics and flow structures in spanwise-rotating turbulent plane Couette flows. *Phys. Rev. Fluids* **1**, 054401.
- GROSSMANN, S., LOHSE, D. & SUN, C. 2016 High-Reynolds number Taylor–Couette turbulence. *Annu. Rev. Fluid Mech.* **48**, 53–80.
- HAMBA, F. 2006 The mechanism of zero mean absolute vorticity state in rotating channel flow. *Phys. Fluids* **18**, 125104.
- HAMBA, F. 2018 Turbulent energy density in scale space for inhomogeneous turbulence. *J. Fluid Mech.* **842**, 532–553.
- HART, J. E. 1971 Instability and secondary motion in a rotating channel flow. *J. Fluid Mech.* **45** (2), 341–351.
- HILL, R. J. 2002 Exact second-order structure-function relationships. *J. Fluid Mech.* **468**, 317–326.
- HIWATASHI, K., ALFREDSSON, P. H., TILLMARK, N. & NAGATA, M. 2007 Experimental observations of instabilities in rotating plane Couette flow. *Phys. Fluids* **19**, 048103.
- HUTCHINS, N. & MARUSIC, I. 2007 Large-scale influences in near-wall turbulence. *Phil. Trans. R. Soc. Lond. A* **365**, 647–664.
- ISHIDA, T., TSUKAHARA, T. & KAWAGUCHI, Y. 2014 Large-scale structure alternation in rotating plane Poiseuille flow at transitional Reynolds number. *Appl. Therm. Engng* **72**, 70–81.
- JOHNSTON, J. P., HALLEEN, R. M. & LEZIUS, D. K. 1972 Effects of spanwise rotation on the structure of two-dimensional fully developed turbulent channel flow. *J. Fluid Mech.* **56** (3), 533–557.
- KAWATA, T. & ALFREDSSON, P. H. 2016a Experiments in rotating plane Couette flow – momentum transport by roll-cell structure and zero-absolute-vorticity state. *J. Fluid Mech.* **791**, 191–213.
- KAWATA, T. & ALFREDSSON, P. H. 2016b Turbulent rotating plane Couette flow: Reynolds and rotation number dependency of flow structure and momentum transport. *Phys. Rev. Fluids* **1**, 034402.
- KAWATA, T. & ALFREDSSON, P. H. 2018 Inverse interscale transport of the Reynolds shear stress in plane Couette turbulence. *Phys. Rev. Lett.* **120**, 244501.
- KRISTOFFERSEN, R. & ANDERSSON, H. I. 1993 Direct simulations of low-Reynolds-number turbulent flow in a rotating channel. *J. Fluid Mech.* **256**, 163–197.
- LEE, M. & MOSER, R. D. 2015 Spectral analysis on Reynolds stress transport equation in high RE wall-bounded turbulence. In *Proceedings of 9th Symposium on Turbulent Shear Flow Phenomena, Melbourne, Australia*, art. no. 4A-3. TSFP.
- LEE, M. & MOSER, R. D. 2017 Role of large-scale motions in turbulent Poiseuille and Couette flows. In *Proceedings of the 10th Symposium on Turbulent Shear Flow Phenomena, Chicago, USA*, art. no. 9B-3. TSFP.
- LEE, M. & MOSER, R. D. 2019 Spectral analysis of the budget equation in turbulent channel flows at high Reynolds number. *J. Fluid Mech.* **860**, 886–938.
- LEZIUS, D. K. & JOHNSTON, J. P. 1976 Roll-cell instabilities in rotating laminar and turbulent channel flows. *J. Fluid Mech.* **77**, 153–175.
- MARATI, N., CASCIOLA, C. M. & PIVA, R. 2004 Energy cascade and spatial fluxes in wall turbulence. *J. Fluid Mech.* **521**, 191–215.
- MATHIS, R., HUTCHINS, N. & MARUSIC, I. 2009 Large-scale amplitude modulation of the small-scale structures in turbulent boundary layers. *J. Fluid Mech.* **628** (10), 311–337.

- MIZUNO, Y. 2016 Spectra of energy transport in turbulent channel flows for moderate Reynolds numbers. *J. Fluid Mech.* **805** (25), 171–187.
- NAGATA, M. 1998 Tertiary solutions and their stability in rotating plane Couette flow. *J. Fluid Mech.* **358**, 357–378.
- PIOMELLI, U., CABOT, W. H., MOIN, P. & LEE, S. 1991 Subgrid-scale backscatter in turbulent and transitional flows. *Phys. Fluids A* **3**, 1766–1771.
- SAIKRISHNAN, N., ANGELIS, E. D., LONGMIRE, E. K., MARUSIC, I., CASCIOLA, C. M. & PIVA, R. 2012 Reynolds number effects on scale energy balance in wall turbulence. *Phys. Fluids* **24** (1), 015101.
- SALEWSKI, M. & ECKHARDT, B. 2015 Turbulent states in plane Couette flow with rotation. *Phys. Fluids* **27**, 045109.
- SMITS, A. J., MCKEON, B. J. & MARUSIC, I. 2011 High-Reynolds number wall turbulence. *Annu. Rev. Fluid Mech.* **43**, 353–375.
- SURYADI, A., SEGALINI, A. & ALFREDSSON, P. H. 2014 Zero absolute vorticity: insight from experiments in rotating laminar plane Couette flow. *Phys. Rev. E* **89**, 033003.
- SURYADI, A., TILLMARK, N. & ALFREDSSON, P. H. 2013 Velocity measurements of streamwise roll cells in rotating plane Couette flow. *Exp. Fluids* **54**, 1617.
- TANAKA, M., KIDA, S., YANASE, S. & KAWAHARA, G. 2000 Zero-absolute-vorticity state in a rotating turbulent shear flow. *Phys. Fluids* **12**, 1979–1985.
- TILLMARK, N. & ALFREDSSON, P. H. 1991 An experimental study of transition in plane Couette flow. In *Advances in Turbulence 3* (ed. A. V. Johansson & P. H. Alfredsson), pp. 235–242. Springer.
- TILLMARK, N. & ALFREDSSON, P. H. 1992 Experiments on transition in plane Couette flow. *J. Fluid Mech.* **235**, 89–102.
- TILLMARK, N. & ALFREDSSON, P. H. 1996 Experiments on rotating plane Couette flow. In *Advances in Turbulence VI* (ed. S. Gavrilakis, L. Machiels & P. A. Monkewitz), pp. 391–394. Kluwer.
- TRITTON, D. J. & DAVIES, P. A. 1985 Instabilities in geophysical fluid dynamics. In *Hydrodynamic Instabilities and the Transition to Turbulence*, 2nd edn. (ed. H. L. Swinney & J. P. Gollub), Topics in Applied Physics, vol. 45, pp. 229–270. Springer.
- TSUKAHARA, T. 2011 Structures and turbulent statistics in a rotating plane Couette flow. *J. Phys. Conf. Ser.* **318** (2), 022024.
- TSUKAHARA, T., TILLMARK, N. & ALFREDSSON, P. H. 2010 Flow regimes in a plane Couette flow with system rotation. *J. Fluid Mech.* **648**, 5–33.
- XIA, Z., SHI, Y. & CHEN, S. 2016 Direct numerical simulation of turbulent channel flow with spanwise rotation. *J. Fluid Mech.* **788**, 42–56.