

**Secretion of an immunoreactive single-chain variable fragment  
antibody against mouse interleukin 6 by *Lactococcus lactis***

Suguru Shigemori<sup>1,2</sup>, Masaki Ihara<sup>1,3</sup>, Takashi Sato<sup>4</sup>, Yoshinari Yamamoto<sup>1,2</sup>,  
Shireen Nigar<sup>1,5</sup>, Tasuku Ogita<sup>3</sup>, Takeshi Shimosato<sup>1,3,6\*</sup>

<sup>1</sup>*Department of Bioscience and Food Production Science, Interdisciplinary Graduate School of Science and Technology, Shinshu University, 8304 Minamiminowa, Kamiina, Nagano 399-4598, Japan.*

<sup>2</sup>*Research Fellow of the Japan Society for the Promotion of Science, Japan Society for the Promotion of Science, 5-3-1, Kojimachi, Chiyoda-ku, Tokyo 102-0083, Japan*

<sup>3</sup>*Department of Interdisciplinary Genome Sciences and Cell Metabolism, Institute for Biomedical Sciences, Interdisciplinary Cluster for Cutting Edge Research, Shinshu University, 8304 Minamiminowa, Kamiina, Nagano 399-4598, Japan.*

<sup>4</sup>*Department of Internal Medicine and Clinical Immunology, Graduate School of Medicine, Yokohama City University, 3-9 Fukuura, Kanazawa-ku, Yokohama, Kanagawa 236-0004, Japan.*

<sup>5</sup>*Department of Nutrition and Food Technology, Jessore University of Science and Technology, Churamonkathi-Chowgacha Rd, Jessore 7408, Bangladesh.*

<sup>6</sup>*Research Center for Fungal and Microbial Dynamism, Shinshu University, 8304 Minamiminowa, Kamiina, Nagano 399-4598, Japan.*

**\*Corresponding author: Takeshi Shimosato, Ph.D.**

**Phone/Fax: +81-265-77-1403, e-mail: shimot@shinshu-u.ac.jp**

## **Abstract**

Interleukin 6 (IL-6) is an important pathogenic factor in development of various inflammatory and autoimmune diseases and cancer. Blocking antibodies against molecules associated with IL-6/IL-6 receptor signaling are an attractive candidate for the prevention or therapy of these diseases. In this study, we developed a genetically modified strain of *Lactococcus (L.) lactis* secreting a single-chain variable fragment antibody against mouse IL-6 (IL6scFv). An IL6scFv-secretion vector was constructed by cloning an IL6scFv gene fragment into a lactococcal secretion plasmid, and was electroporated into *L. lactis* NZ9000 (NZ-IL6scFv). Secretion of recombinant IL6scFv (rIL6scFv) in nisin-induced NZ-IL6scFv was confirmed by western blotting, and optimized by tuning culture conditions. We found the binding ability of rIL6scFv to commercial recombinant mouse IL-6. This result clearly demonstrated the immunoreactivity of rIL6scFv. This is the first report to engineer a genetically modified strains of lactic acid bacteria (gmLAB) that produces a functional anti-cytokine scFv. Numerous previous studies suggested that mucosal delivery of the biomedical proteins using gmLAB is an effective, and low-cost way for the treatment of various disorders. Therefore, NZ-IL6scFv may be an attractive tool for the research and development of new IL-6 targeting-agent for various inflammatory and autoimmune diseases as well as cancer.

**Keywords; gmLAB, immunoreactivity, interleukin 6, *Lactococcus lactis*, scFv antibody**

## INTRODUCTION

Interleukin 6 (IL-6) exerts a pleiotropic activity on inflammation, immune response, and hematopoiesis through binding to an IL-6 receptor (IL-6R) (Kishimoto 2005). A transient acute phase response mediated by the IL-6/IL-6R signaling pathway in vivo, triggered by various environmental stimulants such as infection and tissue injury, plays an important role in host defense (Heinrich et al. 1990). However, dysregulated continual activation of this pathway is associated with the development of numerous chronic inflammatory disorders and autoimmune diseases as well as a malignant neoplasm (Tanaka et al. 2014). Clinical studies have been extensively performed to reveal the pathogenic role of IL-6 and therapeutic benefits of the IL-6/IL-6R signaling blockades in rheumatoid arthritis (RA), and tocilizumab, a humanized anti-IL-6R, is currently recommended to employ as a first-line biologic in the therapeutic intervention for the patients suffered from the moderate-to-severe active RA in more than 100 countries (Tanaka and Kishimoto 2011; Tanaka et al. 2014). Besides this case, numerous clinical and preclinical evidences have suggested the availability of the IL-6/IL-6R signaling blockades for the other disorders such as juvenile idiopathic arthritis (De Benedetti et al. 2012; Yokota et al. 2008), Castleman's disease (Katsume et al. 2002; Nishimoto et al. 2005), systemic lupus erythematosus (Illei et al. 2010; Shirota et al. 2013; Szepietowski et al. 2013), systemic sclerosis (Kitaba et al. 2012) (a completed clinical trial: NCT01532869), and Crohn's disease (Atreya et al. 2000; Ito et al. 2004; Jostock et al. 2001) as well as RA (Smolen et al. 2014).

Here, we supposed that the new inhibition strategy for IL-6/IL-6R signaling using genetically modified strains of lactic acid bacteria (gmLAB). gmLAB is a

recombination microbe producing various biomedical proteins, and carried out as a mucosal delivery vehicle and a therapeutic agent in mouse models of inflammatory bowel diseases (IBD) (Hanson et al. 2014; Motta et al. 2012; Shigemori et al. 2015), food allergy (Ai et al. 2014; Huibregtse et al. 2007), type 1 diabetes (Robert et al. 2014; Takiishi et al. 2012), and multiple sclerosis (Rezende et al. 2013). In addition, a phase I clinical trial in Crohn's disease patients provided the evidence that IL-10-secreting gmLAB (*LL-Thy12*) is safe because there are only minor side effects and it was biologically contained (Braat et al. 2006). Therefore, gmLAB receive remarkable attention as an effective, and low-cost live therapeutic agent for the inflammatory and autoimmune diseases. We supposed that gmLAB producing IL-6 blocking antibody may be an attractive candidate for the treatment of various inflammatory and autoimmune diseases, especially the mucosa-associated illnesses such as IBD and asthma, and cancer of the mucosal tissue. To provide a tool for the research and development of new therapeutic agent targeting to IL-6/IL-6R signaling, we aimed to construct a genetically modified strain of *Lactococcus lactis* that secretes a single-chain variable fragment (scFv) antibody against mouse IL-6 (IL6scFv). We first validated the nisin-induced secretion of recombinant IL6scFv (rIL6scFv) in a gm-*L. lactis* strain harboring IL6scFv-secretion vector, and the optimal conditions for the secretion of rIL6scFv. We also determined an immunoreactivity of rIL6scFv to mouse IL-6.

## **MATERIALS AND METHODS**

### **Bacterial strains and growth conditions**

*L. lactis* NZ9000 (NZ9000) that was a derivative of *L. lactis* subsp. *cremoris* MG1363 and contains the regulatory genes *nisR* and *nisK* integrated into *pepN* gene (de

Ruyter et al. 1996; Kuipers et al. 1998) was purchased from MoBiTec GmbH (Gottingen, Germany). NZ9000 was grown anaerobically at 30°C in M17 broth (BD Difco, Becton, Dickinson and Company, Sparks, MD, USA) supplemented with 0.5% glucose (GM17). Genetically modified strains of NZ9000 (gmNZ9000) were grown in GM17 with 10 µg/mL chloramphenicol (GM17cm). *Escherichia coli* M15 (QIAGEN K.K., Tokyo, Japan) (Villarejo and Zabin 1974) was grown in Luria-Bertani (LB) broth (Invitrogen Corporation, Carlsbad, CA, USA) supplemented with 20 µg/mL kanamycin (LB<sup>+kan</sup>) at 37°C with intense shaking condition. If necessary, 50 µg/mL ampicillin were added to LB<sup>+kan</sup> broth (LB<sup>+kan+amp</sup>).

### **Construction of recombinant bacterial strains**

General molecular cloning techniques were performed essentially according to previously described methods (Sambrook and Russell 2001). All restriction enzymes were purchased from TAKARA BIO Inc. (Kusatsu, Shiga, Japan). To construct gmNZ9000, a lactococcal plasmid, pNZ8148#2:SEC (Fig. 1a) which is a modified plasmid of pNZ8148 and contains the genes coding for a nisin-inducible promoter (P<sub>nis</sub>), a signal peptide from the USP45 protein (SP<sub>usp45</sub>), a hexahistidine tag (His-tag), a factor Xa recognition site (FXa), a multiple cloning site (MCS), and a chloramphenicol acetyltransferase (cat), was employed as a secretion vector (Shigemori et al. 2014, 2015). A sequence coding for an IL6scFv (DDBJ accession number: LC175907, <http://getentry.ddbj.nig.ac.jp/getentry/na/LC175907/>) was synthesized and subcloned into pEX-A by Eurofins Genomics K.K. (Tokyo, Japan) upon codon optimization for *L. lactis* subsp. *cremoris* MG1363. A DNA fragment of IL6scFv was cut out from the subclone vector using restriction enzymes *Kpn*I and *Hind*III, and was then ligated with

*KpnI/HindIII*-digested pNZ8148#2:SEC. The resulting plasmid (pNZ8148#2:SEC-IL6scFv, Fig. 1b) and an empty plasmid were separately electroporated into NZ9000 using a Gene Pulser Xcell electroporation system (Bio-Rad Laboratories, Inc., Hercules, CA, USA) following the manufacturer's instructions, generating NZ-IL6scFv or NZ-vector control (NZ-VC), respectively.

pNZ8148#2:SEC-IL6scFv was analyzed by the DNA sequencing (performed by Eurofins Genomics K.K.), and were consistent with the predictive sequences (data not shown).

### **Preparation of the protein samples from small-scale culture of gmNZ9000**

To prepare the protein samples using to the expression analyses of rIL6scFv, gmNZ9000 were cultured in 2-mL culture system. The experimental procedures in this section were performed as previously described method (Shigemori et al. 2013, 2014). Briefly, a 1.9-mL aliquot of fresh GM17cm broth was inoculated 1:20 (*v/v*) with a 0.1-mL overnight culture of gmNZ9000, and was incubated at 30°C. Gene expression in gmNZ9000 was induced by supplementation with nisin (MoBiTec GmbH) to culture medium at the point of an optical density at 600nm ( $OD_{600}$ ) of around 0.4. After 0 to 48 hr induction at 30°C,  $OD_{600}$  in the cultures were measured, and bacterial cells and culture supernatants were separated by centrifugation. Cellular extracts and supernatant samples were then prepared using the lysozyme/sodium dodecyl sulfate (SDS) method or trichloroacetic acid precipitation, respectively. An equal volume of 2× Leammli Sample Buffer (Wako Pure Chemical Industries, Ltd., Osaka, Japan) was added to each sample, and the mixture was then boiled for 5 min.

### **Preparation of the cellular extracts from large-scale culture of NZ-IL6scFv**

Gene expression of rIL6scFv was induced with nisin in 50-mL or 4-L large-scale cultures according to the above-mentioned methods. After induction, cells from 50-mL or 4-L cultures were collected by centrifugation at 3,000×g and 4°C for 20 min, and were washed twice with ice-cold phosphate-buffered saline (PBS; 137 mM sodium chloride, 2.7 mM potassium chloride, 10 mM disodium hydrogenphosphate, 1.76 mM potassium dihydrogenphosphate, pH 7.4) or basic buffer for immobilized metal ion affinity chromatography (IMAC0; 20 mM sodium phosphate, 500 mM sodium chloride, pH 8.0), respectively. The frozen-cellular pellet was grinded with aluminum oxide powder (Wako Pure Chemical Industries, Ltd.) (pellet : Al<sub>2</sub>O<sub>3</sub> = 1 : 3) on a mortar for 15 min on ice. The homogenate was collected with ice-cold PBS or IMAC0 containing an ethylenediaminetetraacetic acid (EDTA) free-protease inhibitor cocktail tablet (Roche Diagnostics GmbH, Mannheim, Germany), and was clarified by two-times centrifugation at 20,000×g and 4°C for 20 min. Cellular extracts prepared from 50-mL or 4-L cultures were further used in ELISA or the His-tag purification, respectively.

### **SDS-polyacrylamide gel electrophoresis (SDS-PAGE) and western blotting**

SDS-PAGE was performed on a 15% (v/v) polyacrylamide gel (Wang et al. 2015). The bands of separated proteins were visualized by gel staining with Coomassie Brilliant Blue (Polysciences, Inc., Warrington, PA, USA) or transferred from the gel onto a polyvinylidene fluoride membrane (GE Healthcare, Buckinghamshire, UK) for western blotting. The protein blotted-membrane was blocked with skim milk, and then was reacted with mouse anti-His tag antibody (Ab) (1/1,000) (652501; BioLegend, San Diego, CA, USA), followed by incubation with horseradish peroxidase

(HRP)-conjugated goat anti-mouse IgG Ab (1/5,000) (A4416; Sigma-Aldrich, St. Louis, MO, USA). The resulting blots were reacted with an ECL Prime Western Blotting Detection Reagent (GE Healthcare), and were detected using a lumino image analyzer (ImageQuant LAS 4000 mini, GE Healthcare). A densitometric analysis using an ImageJ software (Schneider et al. 2012) was performed to quantify the detected bands.

### **Preparation of rHis-tagged GFP from recombinant *E. coli* M15**

To obtain a control protein against rIL6scFv, rHis-tagged GFP (rGFP) was produced in *E. coli* M15, and was purified and validated. A His-tagged GFP-expression vector was constructed by introduction an EmGFP gene (714 bp, DDBJ accession number: AB758275, <http://getentry.ddbj.nig.ac.jp/getentry/ddbj/AB758275?filetype=html>) coding for green fluorescence protein (GFP) to *E. coli* expression vector, pQE-30 Xa (QIAGEN K.K.), and was expressed in *E. coli* M15 as described in the manufacturer's instructions. The resulting recombinant strain was designed to M15-GFP. rGFP produced by M15-GFP was purified by immobilized metal ion affinity chromatography techniques as described below. High purity (> 99%) and reactivity to anti-His tag Ab of purified rGFP was confirmed by SDS-PAGE or two immunoassays (*i.e.* western blotting and ELISA), respectively (data not shown).

### **Purification of rIL6scFv from NZ-IL6scFv**

The His-tagged proteins were purified by immobilized metal ion affinity chromatography techniques that were operated by a fast protein liquid chromatography system (AKTA pure 25, GE Healthcare). HisTrap HP column (1 mL, GE Healthcare)



was equilibrated with 10 column volumes (CV) of IMAC0, and was then loaded of the membrane (pore size: 0.2  $\mu\text{m}$ ) filtered-cellular extracts using Superloop (50 mL, GE Healthcare). The column was washed with 10 CV of IMAC0 containing 20 mM imidazole. The column-absorbed proteins were eluted by the linear gradient procedure (20 to 500 mM imidazole, 30 CV). The flow rate of a series of events was controlled at 1 mL/min. The collected fractions (crude cellular extract, flow-through, wash, and elution) were analyzed by SDS-PAGE and western blotting according to the above-mentioned methods. The eluted fractions were dialyzed against PBS, and were then concentrated by ultrafiltration (Centriprep 10K device, Merck Millipor Ltd., Carrigtwohill, Co. Cork, Ireland). rIL6scFv concentration in the concentrate was determined by western blotting with anti-His tag Ab as described above. In this assay, rGFP purified from M15-GFP was used as a standard protein (data not shown).

### **ELISA for detection of His-tagged proteins**

To determine the binding ability of rIL6scFv to mouse IL-6, we employed a modified method of a standard techniques of ELISA (Voller et al. 1978). Briefly, flat-bottom immuno 96-well plates (Nunc MaxiSorp, Nunc A/S, Roskilde, Denmark) were coated by overnight incubation at 4°C with 1 ng/mL recombinant mouse IL-6 (rmIL-6, 406-ML, R&D Systems, Inc., Minneapolis, MN, USA) that diluted in PBS. The plates were washed three times with wash buffer (0.05% Tween-20 in PBS), and were then saturated with Blocker (3% bovine serum albumin in wash buffer) by incubation for 2 hr at room temperature (RT). The plates were washed three times, and were reacted with various concentrations of the rIL6scFv or rGFP, or cellular extracts (200  $\mu\text{g}$  of protein) from nisin-induced gmNZ9000 strains by incubation for 2 hr at RT.

After plate washing five times, the rmIL-6-binding proteins were reacted with anti-His tag Ab (1/1,000) for 2 hr at RT, and were further incubated with HRP-conjugated goat anti-mouse IgG Ab (1/5,000) for 1 hr at RT. The plates were washed seven times and the HRP substrates (3,3',5,5'-tetramethylbenzidine: TMB; Nacalai Tesque, Inc., Kyoto, Japan) were added to each well. After incubation under shading condition for 15 min at RT, the enzymatic reaction was stopped with 2 N sulfuric acid, and absorbance was measured at 450 nm.

To measure the reactivity to anti-His tag antibody and amounts of His-tagged peptides produced by gmNZ9000 strains, cellular extracts (20 µg of protein) from gmNZ9000 strains or various concentration of rGFP which used as a control protein were bind onto the plate by overnight incubation at 4°C. After the plate was blocked, the plate-bound proteins were reacted with anti-His tag Ab and further detected as the above-mentioned methods.

### **Statistical analysis**

Statistical analyses were performed using a statistical software package (ystat2004.xls, Igakutosho Shuppan, Tokyo, Japan). Student's t-test or one-way ANOVA followed by the Dunnett test were used to determine the significance of the differences. Values are expressed as mean ± standard deviation (SD).

## **RESULTS**

### **Expression and secretion of rIL6scFv by NZ-IL6scFv**

To generate rIL6scFv-secreting gmNZ9000, we engineered pNZ8148#2:SEC to construct the IL6scFv secretion vector, pNZ8148#2:SEC-IL6scFv (Fig. 1). This plasmid

was designed to express the IL6scFv conjugating to SP<sub>usp45</sub> and His-tag at N-terminus under controlled by P<sub>nis</sub>. The resulting plasmid was introduced into NZ9000 by electroporation, and the gene expression in cells and extracellular secretion of rIL6scFv were verified by SDS-PAGE (Fig. 2a, c) and western blotting with anti-His tag Ab (Fig. 2b, d). In SDS-PAGE analysis, it was confirmed that same amount of protein was loaded to each well (Fig. 2a, c). Western blotting detected two bands corresponding to the secretion precursor of rIL6scFv (34.0 kDa) and the secretion form of rIL6scFv (31.2 kDa) in cellular extracts of nisin-induced NZ-IL6scFv (Fig. 2b). It also showed that a single band corresponding to the secretion form of rIL6scFv was observed in the culture supernatant from nisin-induced NZ-IL6scFv (Fig. 2d). In contrast, considerable bands of rIL6scFv were not observed in both cellular extracts and culture supernatant from nisin-induced NZ-VC and non-induced two gmNZ9000 strains in western blotting (Fig. 2b, d).

### **Optimal conditions for rIL6scFv secretion in NZ-IL6scFv**

To optimize the expression/secretion of rIL6scFv in NZ-IL6scFv, we tuned two parameters (i.e. nisin concentration and induction time) in the induction phase of gene expression. The turbidity of culture medium (OD<sub>600</sub>) at 3 hr following the nisin induction was decreased in a nisin concentration-dependent manner (Fig. 3a). Particularly, cell growth was significantly inhibited in the presence of nisin more than 0.78 ng/mL as compared with a non-existent condition of nisin (0 ng/mL). In contrast, the western blot analysis showed that the expression/secretion level of rIL6scFv was gradually increased with rising in nisin concentration (Fig. 3b). However, the secretion precursor of rIL6scFv was observed in the supernatant from the culture induced with

1.56 ng/mL and over nisin (Fig. 3b). Next, we attempted optimization of the incubation time after nisin stimulation. An absorbance at OD<sub>600</sub> in the culture increased in an induction time-dependent manner until 7 hr, and stabilized between 2.0 to 2.5 after 7 hr incubation (Fig. 3c). The expression level of rIL6scFv per bacterial cell was high even when 1 hr after nisin stimulation, and was slightly decreased at 24 and 48 hr (*Cell* in Fig. 3d). Secretion of rIL6scFv was elevated in a time-dependent manner (*Sup* in Fig. 3d). However, a clear band of the secretion precursor of rIL6scFv was detected in the supernatant from the culture induced for 12 hr and more.

### **Purification of rIL6scFv**

The rIL6scFv was purified from cellular extracts of nisin-induced NZ-IL6scFv in 4-L large-scale culture by immobilized metal ion affinity chromatography. The column-absorbed proteins were eluted using imidazole with the linear gradient condition, and the eluent was collected in three fractions (Fig. 4a). Western blotting showed that the rIL6scFv was detectable in all eluted fractions, and the highest amount of rIL6scFv was observed in F-2 (Fig. 4b). However, SDS-PAGE demonstrated that the F-1 and F-2 contained a considerable amount of irrelevant proteins (Fig. 4b), the F-3 was, therefore, used for the following experiment.

### **Immunoreactivity of rIL6scFv**

To examine whether rIL6scFv is biological active, an immunoreactivity of rIL6scFv against rmIL-6 were assayed in ELISA. As shown in Fig. 5a, the purified recombinant proteins or cellular extracts from nisin-induced gmNZ9000 strains were reacted to the solid phase-immobilized rmIL-6, and the rmIL-6 binding protein was then

detected with anti-His tag Ab. When the purified rIL6scFv was applied to this system, an absorbance at 450 nm was increased in a protein concentration-dependent manner (Fig. 5b). On the other hand, it was detected at baseline level in all examined concentrations when purified rGFP was used (Fig. 5b). We further assessed the immunoreactivity of rIL6scFv against rmIL-6 using cellular extracts from nisin-induced gmNZ9000 strains. Using an ELISA method, we confirmed that both His-tagged peptides produced by NZ-VC or NZ-IL6scFv bore the reactivity to anti-His tag Ab (data not shown). An absorbance at 450 nm was significantly higher when the NZ-IL6scFv extracts were applied to this system than when the NZ-VC extracts were applied (Fig. 5c). Those results were clearly demonstrated that rIL6scFv produced by NZ-IL6scFv is immunoreactive.

## DISCUSSION

An scFv consists of the smallest paratope unit of an immunoglobulin molecule, in which the variable regions of heavy and light chains are jointed together by a flexible peptide linker (Bird et al. 1988). This simple and small peptide allows production of fully functional antibodies in genetically modified bacteria. Particularly, gmLAB is an optimal platform in the productions of scFv for the purpose of the treatment of the disease. Kruger et al. (2002) reported that a construction of gmLAB (*Lactobacillus zae*) which produced scFv for streptococcal antigenI/II adhesin molecule of *Streptococcus mutans*. Interestingly, the oral delivery of scFv using gmLAB reduced caries in the rat model. Because the mucosa delivery of scFv using gmLAB does not require refinement and can evade a systemic side effect not to expect, it is therapeutic strategies for treatment of low-cost. However, there are no reports of gmLAB producing

cytokine neutralizing scFv for the treatment of inflammatory disorder and the autoimmune disease. Therefore in this study, we developed a gmNZ9000 strain that secretes rIL6scFv with nisin-controlled gene expression (NICE) system (Mierau and Kleerebezem 2005).

We constructed a secretion vector which has an expression cassette of a homologous signal peptide-IL6scFv fusion peptide under controlled by nisin A promoter. In western blotting, we demonstrated that a signal peptide-fused secretion precursor of rIL6scFv is intracellularly expressed in a gmNZ9000 strain transformed with the IL6scFv secretion vector and is subsequently secreted as a signal peptide-cleaved form to outer environment through a secretion machinery of the cell. To determine the optimal conditions for rIL6scFv expression/secretion, we examined the impact of nisin concentration and induction time with nisin on cell growth and production level of rIL6scFv. The expression/secretion level of rIL6scFv was increased in a nisin concentration-dependent manner. However, the secretion precursor of rIL6scFv was observed in culture supernatants from NZ-IL6scFv cultures stimulated with 1.56 ng/mL and over nisin. Given that the growth inhibition of NZ-IL6scFv was dependent on nisin concentration, it was suggested that the secretion precursor of rIL6scFv in the culture supernatants was passively leaked from the damaged cells by nisin. Next, we tuned the culturing time after nisin addition. The secretion levels in exponential phase (until 7 hr) were increased in a time-dependent manner. In stationary/death phase (after 8 hr), gradually decrease in intracellular expression of rIL6scFv and the leakage of the secretion precursor of rIL6scFv to outer environment were observed. Given comprehensive consideration to these results and discussions, we determined an optimal condition in the rIL6scFv expression/secretion as follow: nisin concentration around 1

ng/mL and induction time between 6 to 7 hr. The intracellular expression and secretion levels of rIL6scFv on the optimal condition were 322 and 7 ng/mL culture, respectively.

By reason that an scFv antibody is a small-size molecule, it has several advantages in clinical application including better tissue penetration, rapid blood clearance, and low immunogenicity as compared to a full-size antibody (Holliger and Hudson 2005). Therefore, an scFv with complete activity as an antibody is an attractive alternative to a full-size antibody in the clinical and diagnostic applications (Nelson 2010; Nelson and Reichert 2009). In this study, immunoreactivity of rIL6scFv was examined by ELISA. This assay clearly demonstrated that rIL6scFv produced by NZ-IL6scFv binds to rmIL-6. This fact gives promise that rIL6scFv and NZ-IL6scFv exert an anti-inflammatory property via neutralization of an rmIL-6 activity. Further studies including in vitro assays for determination of inhibitory activity of rIL6scFv on IL-6/IL-6R signaling activation are needed to clarify these suggestions.

It has considered that IL-6/IL-6R signaling plays an important role in the pathogenesis of chronic inflammatory and autoimmune diseases and cancer in mucosal tissue (Hunter and Jones 2015; Rincon and Irvin 2012; Waldner and Neurath 2014). For example, in IBD including Crohn's disease and ulcerative colitis, IL-6 has been associated with mucosal inflammation in gastrointestinal tract mediated by various cellular mechanisms such as the regulation of T cell differentiation, activation, and proliferation (Hunter and Jones 2015; Waldner and Neurath 2014). A recent study in asthma patients demonstrated that IL-6 impaired lung function through exacerbation of mixed eosinophilic-neutrophilic bronchitis (Chu et al. 2015). In addition, IL-6-dependent activation of signal transducer and activator of transcription 3 (STAT3) promotes tumor cell proliferation and survival, and has been implicated in

tumorigenesis (Yu et al. 2009). Based on these findings, it has suggested that IL-6/IL-6R signaling is a potential therapeutic target in those diseases. Indeed, several pre-clinical studies with model animals have demonstrated that systemic application of an antibody against IL-6 or IL-6R could inhibit the development of inflammation and tumor in respiratory and gastrointestinal tracts (Chu et al. 2015; Song et al. 2014; Yamamoto et al. 2000). Therefore, direct delivery of rIL6scFv to the mucosa using NZ-IL6scFv might be a good strategy for the treatment of IBD, asthma, and cancer of the mucosal tissue, among others. In vivo trials using model animals are needed to demonstrate the potential efficacy of NZ-IL6scFv for the prevention and therapy of those diseases.

In conclusion, we successfully developed a genetically modified strain of *L. lactis* NZ9000, NZ-IL6scFv, which secretes rIL6scFv with optimized culture conditions. Importantly, we clearly demonstrated that rIL6scFv from NZ-IL6scFv is immunoreactive since its ability to bind to rmIL-6. Therefore, NZ-IL6scFv may be an attractive tool for the research and development of new mucosal delivery vehicle of rIL6scFv and IL-6 targeting-agent for inflammatory and autoimmune diseases as well as cancer. This is the first report of gmLAB producing a functional anti-cytokine scFv. This finding becomes the base of low-cost therapeutic antibodies.

## **ACKNOWLEDGMENT**

We are grateful to Yasuhiro Yasaki, Kohichi Sudo, and Fu Namai (Faculty of Agriculture, Shinshu University) for excellent support in purification of recombinant proteins.



## **COMPLIANCE WITH ETHICAL STANDARDS**

**Funding:** This study was supported by a Grant-in-Aid for the Japan Society for the Promotion of Science Fellows (No. 14J06317) to SS, and by a grant from Sumitomo Electric Industries Group CSR Foundation (No. 2012#7) to TSh.

**Conflict of interest:** The authors declare that they have no conflict of interest.

**Ethical approval:** This article does not contain any studies with human participants or animals performed by any of the authors.

## REFERENCE

- Ai C, Zhang Q, Ren C, Wang G, Liu X, Tian F, Zhao J, Zhang H, Chen YQ, Chen W (2014) Genetically engineered *Lactococcus lactis* protect against house dust mite allergy in a BALB/c mouse model. PLoS One 9(10):e109461 doi:10.1371/journal.pone.0109461
- Atreya R, Mudter J, Finotto S, Mullberg J, Jostock T, Wirtz S, Schutz M, Bartsch B, Holtmann M, Becker C, Strand D, Czaja J, Schlaak JF, Lehr HA, Autschbach F, Schurmann G, Nishimoto N, Yoshizaki K, Ito H, Kishimoto T, Galle PR, Rose-John S, Neurath MF (2000) Blockade of interleukin 6 trans signaling suppresses T-cell resistance against apoptosis in chronic intestinal inflammation: evidence in crohn disease and experimental colitis in vivo. Nat Med 6(5):583-588 doi:10.1038/75068
- Bird RE, Hardman KD, Jacobson JW, Johnson S, Kaufman BM, Lee SM, Lee T, Pope SH, Riordan GS, Whitlow M (1988) Single-chain antigen-binding proteins. Science 242(4877):423-426
- Braat H, Rottiers P, Hommes DW, Huyghebaert N, Remaut E, Remon JP, van Deventer SJ, Neiryck S, Peppelenbosch MP, Steidler L (2006) A phase I trial with transgenic bacteria expressing interleukin-10 in Crohn's disease. Clin Gastroenterol Hepatol 4(6):754-759 doi:10.1016/j.cgh.2006.03.028
- Chu DK, Al-Garawi A, Llop-Guevara A, Pillai RA, Radford K, Shen P, Walker TD, Goncharova S, Calhoun WJ, Nair P, Jordana M (2015) Therapeutic potential of anti-IL-6 therapies for granulocytic airway inflammation in asthma. Allergy Asthma Clin Immunol 11(1):14 doi:10.1186/s13223-015-0081-1
- De Benedetti F, Brunner HI, Ruperto N, Kenwright A, Wright S, Calvo I, Cuttica R,

- Ravelli A, Schneider R, Woo P, Wouters C, Xavier R, Zemel L, Baildam E, Burgos-Vargas R, Dolezalova P, Garay SM, Merino R, Joos R, Grom A, Wulffraat N, Zuber Z, Zulian F, Lovell D, Martini A (2012) Randomized trial of tocilizumab in systemic juvenile idiopathic arthritis. *N Engl J Med* 367(25):2385-2395 doi:10.1056/NEJMoa1112802
- de Ruyter PG, Kuipers OP, Beerthuyzen MM, van Alen-Boerrigter I, de Vos WM (1996) Functional analysis of promoters in the nisin gene cluster of *Lactococcus lactis*. *J Bacteriol* 178(12):3434-3439
- Hanson ML, Hixon JA, Li W, Felber BK, Anver MR, Stewart CA, Janelsins BM, Datta SK, Shen W, McLean MH, Durum SK (2014) Oral delivery of IL-27 recombinant bacteria attenuates immune colitis in mice. *Gastroenterology* 146(1):210-221.e13 doi:10.1053/j.gastro.2013.09.060
- Heinrich PC, Castell JV, Andus T (1990) Interleukin-6 and the acute phase response. *Biochem J* 265(3):621-636
- Holliger P, Hudson PJ (2005) Engineered antibody fragments and the rise of single domains. *Nat Biotechnol* 23(9):1126-1136 doi:10.1038/nbt1142
- Huibregtse IL, Snoeck V, de Creus A, Braat H, De Jong EC, Van Deventer SJ, Rottiers P (2007) Induction of ovalbumin-specific tolerance by oral administration of *Lactococcus lactis* secreting ovalbumin. *Gastroenterology* 133(2):517-528 doi:10.1053/j.gastro.2007.04.073
- Hunter CA, Jones SA (2015) IL-6 as a keystone cytokine in health and disease. *Nat Immunol* 16(5):448-457 doi:10.1038/ni.3153
- Illei GG, Shirota Y, Yarboro CH, Daruwalla J, Tackey E, Takada K, Fleisher T, Balow JE, Lipsky PE (2010) Tocilizumab in systemic lupus erythematosus: data on

safety, preliminary efficacy, and impact on circulating plasma cells from an open-label phase I dosage-escalation study. *Arthritis Rheum* 62(2):542-552  
doi:10.1002/art.27221

Ito H, Takazoe M, Fukuda Y, Hibi T, Kusugami K, Andoh A, Matsumoto T, Yamamura T, Azuma J, Nishimoto N, Yoshizaki K, Shimoyama T, Kishimoto T (2004) A pilot randomized trial of a human anti-interleukin-6 receptor monoclonal antibody in active Crohn's disease. *Gastroenterology* 126(4):989-996; discussion 947

Jostock T, Mullberg J, Ozbek S, Atreya R, Blinn G, Voltz N, Fischer M, Neurath MF, Rose-John S (2001) Soluble gp130 is the natural inhibitor of soluble interleukin-6 receptor transsignaling responses. *Eur J Biochem* 268(1):160-167

Katsume A, Saito H, Yamada Y, Yorozu K, Ueda O, Akamatsu K, Nishimoto N, Kishimoto T, Yoshizaki K, Ohsugi Y (2002) Anti-interleukin 6 (IL-6) receptor antibody suppresses Castleman's disease like symptoms emerged in IL-6 transgenic mice. *Cytokine* 20(6):304-311

Kishimoto T (2005) Interleukin-6: From basic science to medicine - 40 years in immunology. *Annu Rev Microbiol* 23:1-21

Kitaba S, Murota H, Terao M, Azukizawa H, Terabe F, Shima Y, Fujimoto M, Tanaka T, Naka T, Kishimoto T, Katayama I (2012) Blockade of interleukin-6 receptor alleviates disease in mouse model of scleroderma. *Am J Pathol* 180(1):165-176  
doi:10.1016/j.ajpath.2011.09.013

Kruger C, Hu Y, Pan Q, Marcotte H, Hultberg A, Delwar D, van Dalen PJ, Pouwels PH, Leer RJ, Kelly CG, van Dollenweerd C, Ma JK, Hammarstrom L (2002) *In situ* delivery of passive immunity by lactobacilli producing single-chain antibodies.

Nat Biotechnol 20(7):702-706 doi:10.1038/nbt0702-702

Kuipers OP, de Ruyter P, Kleerebezem M, de Vos WM (1998) Quorum

sensing-controlled gene expression in lactic acid bacteria. J Biotechnol

64(1):15-21

Mierau I, Kleerebezem M (2005) 10 years of the nisin-controlled gene expression

system (NICE) in *Lactococcus lactis*. Appl Microbiol Biotechnol 68(6):705-717

doi:10.1007/s00253-005-0107-6

Motta JP, Bermudez-Humaran LG, Deraison C, Martin L, Rolland C, Rousset P, Boue J,

Dietrich G, Chapman K, Kharrat P, Vinel JP, Alric L, Mas E, Sallenave JM,

Langella P, Vergnolle N (2012) Food-grade bacteria expressing elafin protect  
against inflammation and restore colon homeostasis. Sci Transl Med

4(158):158ra144 doi:10.1126/scitranslmed.3004212

Nelson AL (2010) Antibody fragments: hope and hype. MAbs 2(1):77-83

Nelson AL, Reichert JM (2009) Development trends for therapeutic antibody fragments.

Nat Biotechnol 27(4):331-337 doi:10.1038/nbt0409-331

Nishimoto N, Kanakura Y, Aozasa K, Johkoh T, Nakamura M, Nakano S, Nakano N,

Ikeda Y, Sasaki T, Nishioka K, Hara M, Taguchi H, Kimura Y, Kato Y, Asaoku H,

Kumagai S, Kodama F, Nakahara H, Hagihara K, Yoshizaki K, Kishimoto T

(2005) Humanized anti-interleukin-6 receptor antibody treatment of multicentric

Castleman disease. Blood 106(8):2627-2632 doi:10.1182/blood-2004-12-4602

Rezende RM, Oliveira RP, Medeiros SR, Gomes-Santos AC, Alves AC, Loli FG,

Guimaraes MA, Amaral SS, da Cunha AP, Weiner HL, Azevedo V, Miyoshi A,

Faria AM (2013) Hsp65-producing *Lactococcus lactis* prevents experimental

autoimmune encephalomyelitis in mice by inducing CD4<sup>+</sup>LAP<sup>+</sup> regulatory T

- cells. *J Autoimmun* 40:45-57 doi:10.1016/j.jaut.2012.07.012
- Rincon M, Irvin CG (2012) Role of IL-6 in asthma and other inflammatory pulmonary diseases. *Int J Biol Sci* 8(9):1281-1290 doi:10.7150/ijbs.4874
- Robert S, Gysemans C, Takiishi T, Korf H, Spagnuolo I, Sebastiani G, Van Huynegem K, Steidler L, Caluwaerts S, Demetter P, Wasserfall CH, Atkinson MA, Dotta F, Rottiers P, Van Belle TL, Mathieu C (2014) Oral delivery of glutamic acid decarboxylase (GAD)-65 and IL10 by *Lactococcus lactis* reverses diabetes in recent-onset NOD mice. *Diabetes* 63(8):2876-2887 doi:10.2337/db13-1236
- Sambrook J, Russell D (2001) *Molecular cloning: a laboratory manual*, 3rd ed. Cold Spring Harbor Laboratory, Cold Spring Harbor, N.Y.
- Schneider CA, Rasband WS, Eliceiri KW (2012) NIH Image to ImageJ: 25 years of image analysis. *Nat Methods* 9(7):671-675
- Shigemori S, Yonekura S, Sato T, Otani H, Shimosato T (2013) Expression of the immunoreactive buckwheat major allergenic storage protein in *Lactococcus lactis*. *Appl Microbiol Biotechnol* 97(8):3603-3611  
doi:10.1007/s00253-012-4608-9
- Shigemori S, Oshiro K, Wang P, Yamamoto Y, Wang Y, Sato T, Uyeno Y, Shimosato T (2014) Generation of dipeptidyl peptidase-IV-inhibiting peptides from  $\beta$ -lactoglobulin secreted by *Lactococcus lactis*. *Biomed Res Int* 2014:393598  
doi:10.1155/2014/393598
- Shigemori S, Watanabe T, Kudoh K, Ihara M, Nigar S, Yamamoto Y, Suda Y, Sato T, Kitazawa H, Shimosato T (2015) Oral delivery of *Lactococcus lactis* that secretes bioactive heme oxygenase-1 alleviates development of acute colitis in mice. *Microb Cell Fact* 14(1):189 doi:10.1186/s12934-015-0378-2

- Shirota Y, Yarboro C, Fischer R, Pham TH, Lipsky P, Illei GG (2013) Impact of anti-interleukin-6 receptor blockade on circulating T and B cell subsets in patients with systemic lupus erythematosus. *Ann Rheum Dis* 72(1):118-128  
doi:10.1136/annrheumdis-2012-201310
- Smolen JS, Weinblatt ME, Sheng S, Zhuang Y, Hsu B (2014) Sirukumab, a human anti-interleukin-6 monoclonal antibody: a randomised, 2-part (proof-of-concept and dose-finding), phase II study in patients with active rheumatoid arthritis despite methotrexate therapy. *Ann Rheum Dis* 73(9):1616-1625  
doi:10.1136/annrheumdis-2013-205137
- Song L, Smith MA, Doshi P, Sasser K, Fulp W, Altiok S, Haura EB (2014) Antitumor efficacy of the anti-interleukin-6 (IL-6) antibody siltuximab in mouse xenograft models of lung cancer. *J Thorac Oncol* 9(7):974-982  
doi:10.1097/jto.0000000000000193
- Szepietowski JC, Nilganuwong S, Wozniacka A, Kuhn A, Nyberg F, van Vollenhoven RF, Bengtsson AA, Reich A, de Vries DE, van Hartingsveldt B, Robinson DW, Jr., Gordon R, Hsu B (2013) Phase I, randomized, double-blind, placebo-controlled, multiple intravenous, dose-ascending study of sirukumab in cutaneous or systemic lupus erythematosus. *Arthritis Rheum* 65(10):2661-2671  
doi:10.1002/art.38091
- Takiishi T, Korf H, Van Belle TL, Robert S, Grieco FA, Caluwaerts S, Galleri L, Spagnuolo I, Steidler L, Van Huynegem K, Demetter P, Wasserfall C, Atkinson MA, Dotta F, Rottiers P, Gysemans C, Mathieu C (2012) Reversal of autoimmune diabetes by restoration of antigen-specific tolerance using genetically modified *Lactococcus lactis* in mice. *J Clin Invest* 122(5):1717-1725

doi:10.1172/jci60530

Tanaka T, Kishimoto T (2011) Immunotherapy of tocilizumab for rheumatoid arthritis. *J*

*Clin Cell Immunol* S6:001 doi:10.4172/2155-9899.S6-001

Tanaka T, Narazaki M, Kishimoto T (2014) IL-6 in Inflammation, Immunity, and

Disease. *Cold Spring Harb Perspect Biol* 6(10):16

doi:10.1101/cshperspect.a016295

Villarejo MR, Zabin I (1974)  $\beta$ -galactosidase from termination and deletion mutant

strains. *J Bacteriol* 120(1):466-474

Voller A, Bartlett A, Bidwell DE (1978) Enzyme immunoassays with special reference

to ELISA techniques. *J Clin Pathol* 31(6):507-520

Waldner MJ, Neurath MF (2014) Master regulator of intestinal disease: IL-6 in chronic

inflammation and cancer development. *Semin Immunol* 26(1):75-79

doi:10.1016/j.smim.2013.12.003

Wang Y, Yamamoto Y, Shigemori S, Watanabe T, Oshiro K, Wang X, Wang P, Sato T,

Yonekura S, Tanaka S, Kitazawa H, Shimosato T (2015) Inhibitory/suppressive

oligodeoxynucleotide nanocapsules as simple oral delivery devices for

preventing atopic dermatitis in mice. *Mol Ther* 23(2):297-309

doi:10.1038/mt.2014.239

Yamamoto M, Yoshizaki K, Kishimoto T, Ito H (2000) IL-6 is required for the

development of Th1 cell-mediated murine colitis. *J Immunol* 164(9):4878-4882

Yokota S, Imagawa T, Mori M, Miyamae T, Aihara Y, Takei S, Iwata N, Umebayashi H,

Murata T, Miyoshi M, Tomiita M, Nishimoto N, Kishimoto T (2008) Efficacy

and safety of tocilizumab in patients with systemic-onset juvenile idiopathic

arthritis: a randomised, double-blind, placebo-controlled, withdrawal phase III



trial. *Lancet* 371(9617):998-1006 doi:10.1016/s0140-6736(08)60454-7

Yu H, Pardoll D, Jove R (2009) STATs in cancer inflammation and immunity: a leading role for STAT3. *Nat Rev Cancer* 9(11):798-809 doi:10.1038/nrc2734

## FIGURE LEGENDS

**Fig. 1** Schematic representations of lactococcal gene expression vectors. A lactococcal secretion plasmid, pNZ8148#2:SEC (a), was integrated a DNA fragment coding for IL6scFv gene in MCS to construct an IL6scFv-secretion vector, pNZ8148#2:SEC-IL6scFv (b). Abbreviations: *P* nisin A promoter, *SP* sequence of the signal peptide from the USP45 protein, *His-tag* hexahistidine tag, *MCS* multiple cloning site, *T* terminator, *rep* replication gene, *cat* chloramphenicol acetyltransferase gene

**Fig. 2** Detection of rIL6scFv. Gene expression was induced in NZ-VC (VC) and NZ-IL6scFv (IL6scFv) with (+) or without (-) nisin. Cellular extracts (a, b) and culture supernatants (c, d) were analyzed with SDS-PAGE (a, c) or western blotting using an anti-His tag Ab (b, d). *Black* and *pink arrows* indicate the secretion precursor of rIL6scFv (34.0 kDa) and the secretion form of rIL6scFv (31.2 kDa), respectively. Abbreviations: *M* molecular weight marker

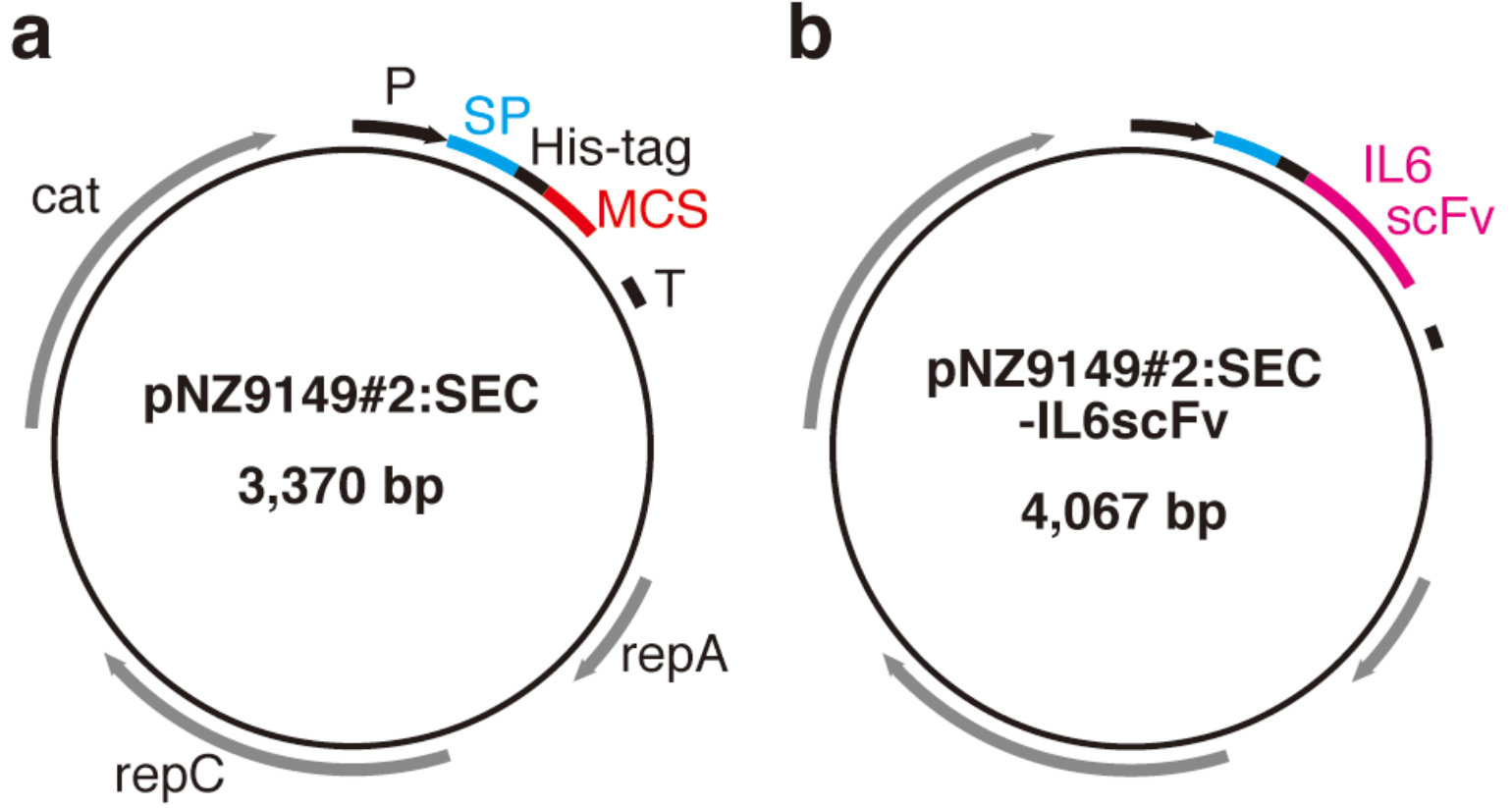
**Fig. 3** Optimization of the conditions for rIL6scFv secretion in NZ-IL6scFv. (a,b) NZ-IL6scFv was cultured with various concentrations of nisin (0 to 12.5 ng/mL). (a) After 3hr incubation at 30°C, an OD<sub>600</sub> in each culture was measured. \*P < 0.05, \*\*P < 0.01 vs. 0 ng/mL nisin. (b) Cellular extracts (*Cell*) and culture supernatants (*Sup*) were prepared from each culture, and analyzed with western blotting using an anti-His tag Ab. (c, d) NZ-IL6scFv was cultured with 1 ng/mL nisin for 0 to 48 hr. (c) An OD<sub>600</sub> in the culture was measured at indicated time points. (d) Cellular extracts (*Cell*) and culture supernatants (*Sup*) were prepared from indicated time points, and analyzed with western blotting using an anti-His tag Ab. (a, c) Data are the mean ± SD from three independent

experiments. (b, d) *Black* and *pink arrows* indicate the secretion precursor of rIL6scFv (34.0 kDa) and the secretion form of rIL6scFv (31.2 kDa), respectively. Similar results were obtained from three independent experiments, and representative data are shown

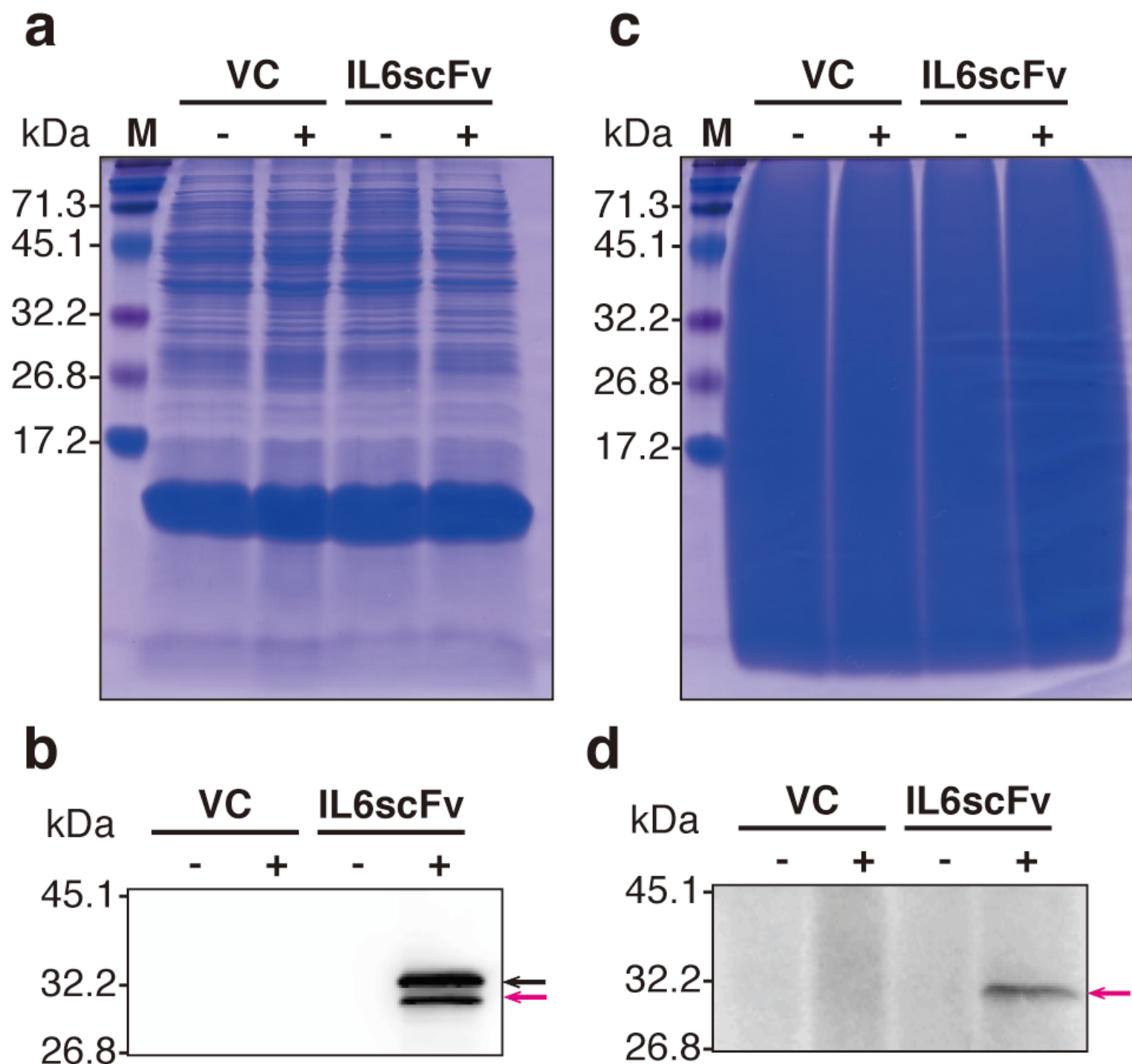
**Fig. 4** Purification of rIL6scFv. rIL6scFv was purified from cellular extracts prepared from nisin-induced NZ-IL6scFv by an immobilized metal ion affinity chromatography technique. (a) A chromatogram in the elution phase in the chromatography. The eluent was collected in three fractions (F-1 to F-3). (b) Fractions obtained from the chromatography were analyzed with SDS-PAGE (*upper*) and western blotting using an anti-His tag Ab (*lower*). *Black* and *pink arrows* indicate the secretion precursor of rIL6scFv (34.0 kDa) and the secretion form of rIL6scFv (31.2 kDa), respectively

**Fig. 5** Immunoreactivity assays of rIL6scFv. (a) A schematic representation of the assay based on an ELISA technique. A solid phase-immobilized rmIL-6 was reacted with the His-tagged proteins. The rmIL-6-binding proteins were then detected with an anti-His tag Ab. (b) Different concentrations of purified rIL6scFv (*pink*) and rGFP (*green*) were applied to the ELISA system to determine their rmIL-6 reactivity. (c) Cellular extracts from nisin-induced NZ-VC (VC) or NZ-IL6scFv (IL6scFv) were used as a source of His-tagged protein in the ELISA system.  $**P < 0.01$ . Similar results were obtained from two or three independent experiments, and representative data are shown

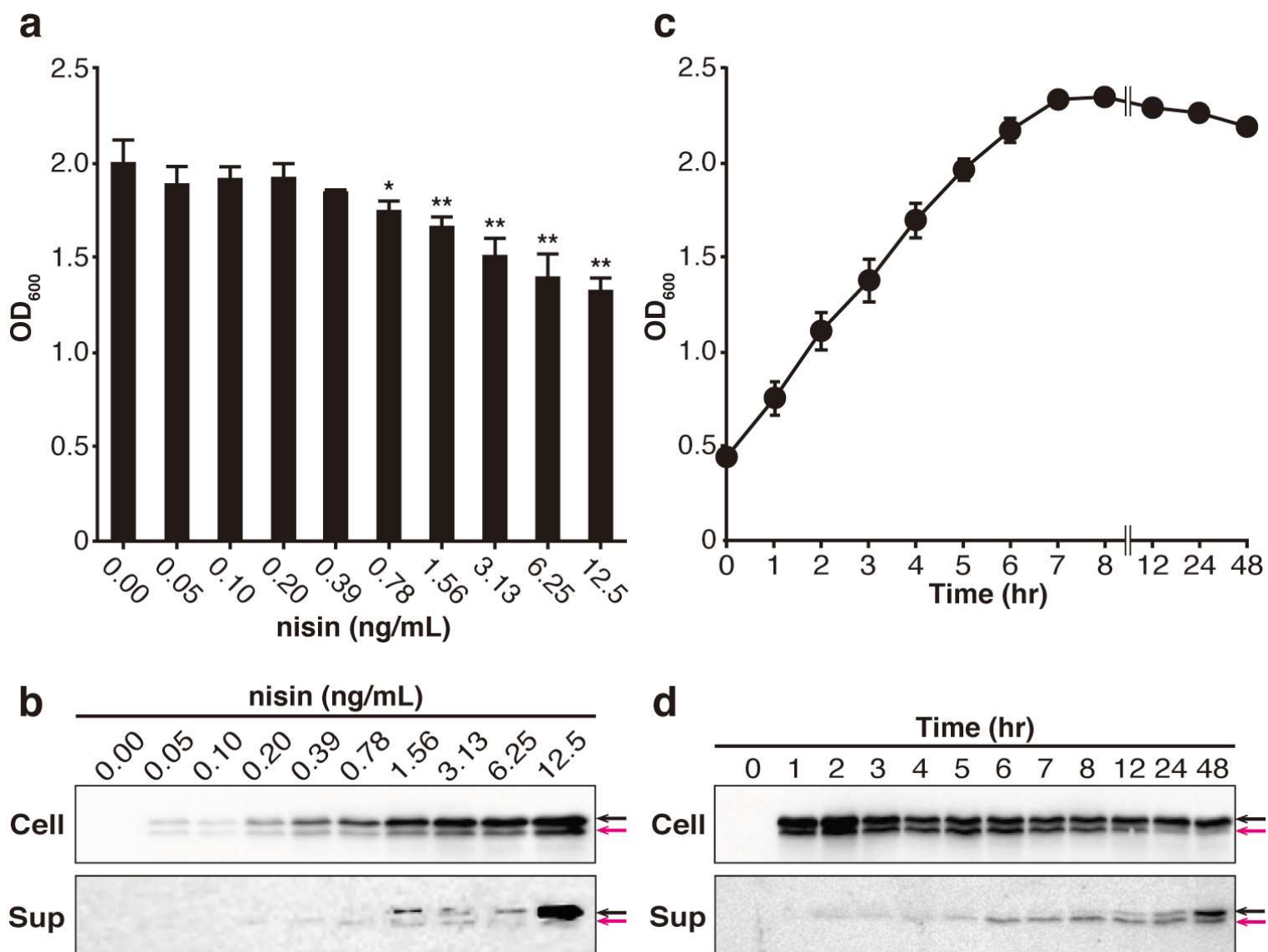
**Fig.1**



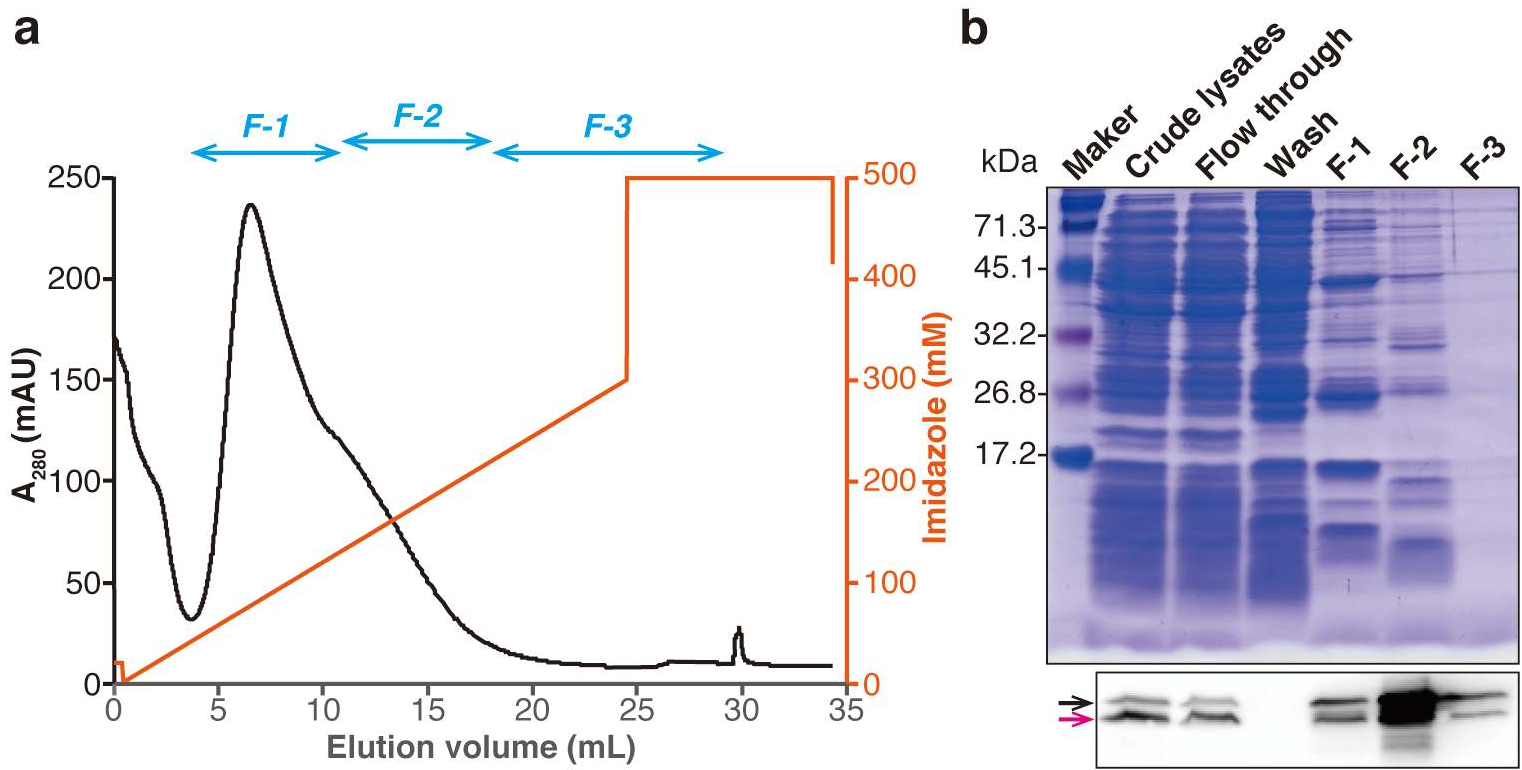
**Fig.2**



**Fig.3**

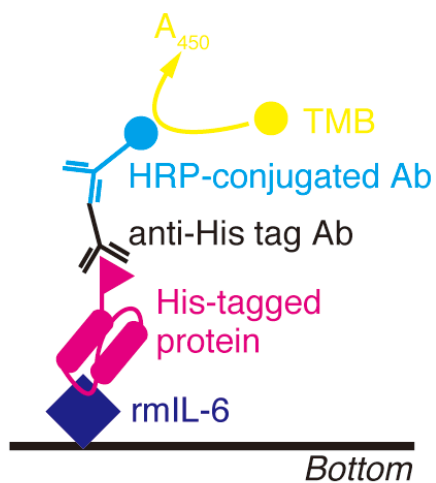


**Fig.4**

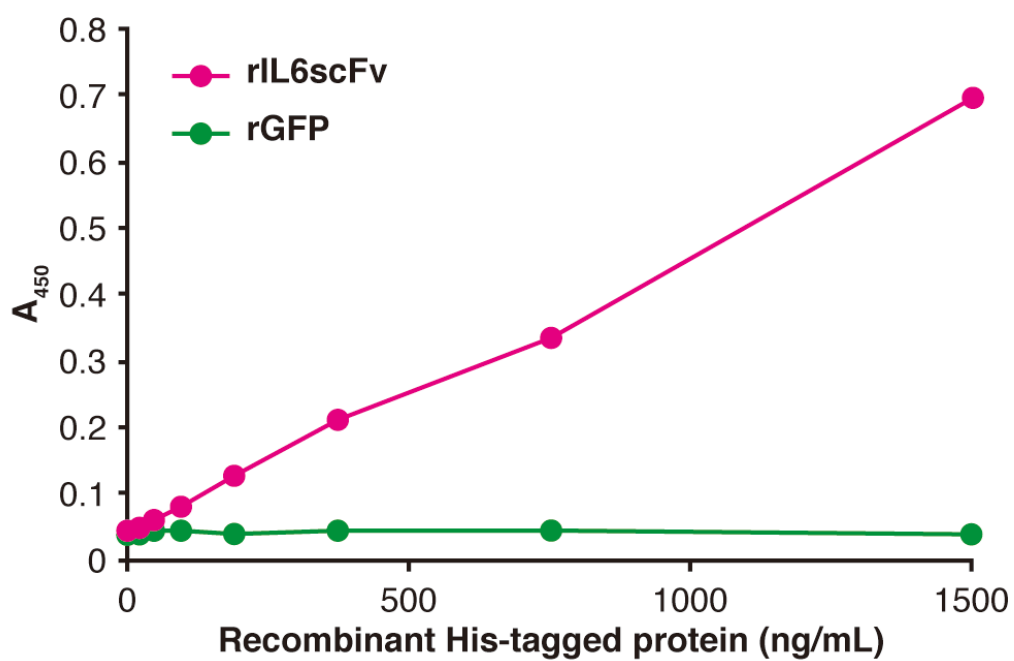


**Fig.5**

**a**



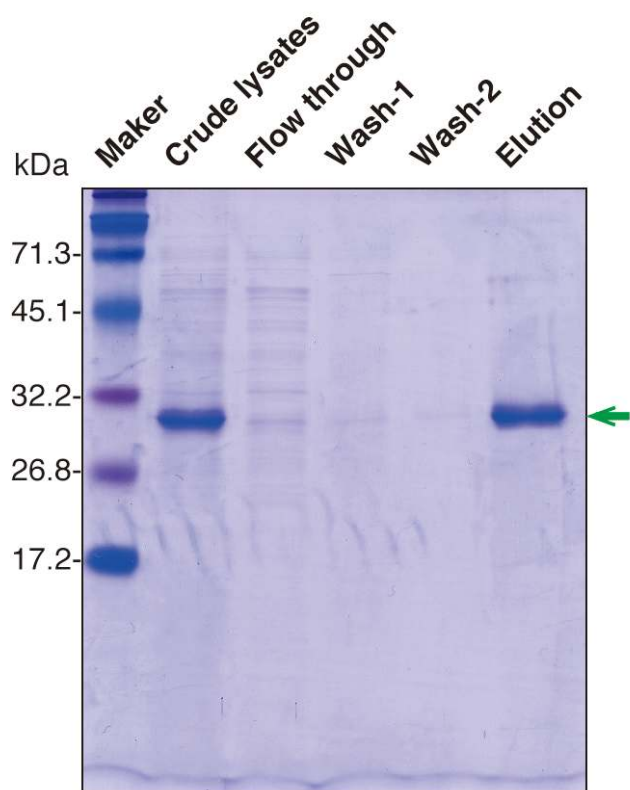
**b**



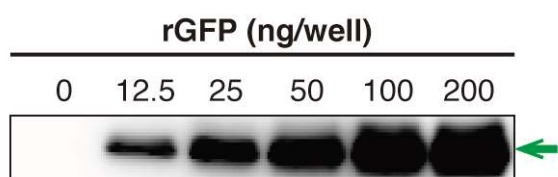


**Fig.S1**

**a**



**b**



**c**

