


Selection on fish personality differs between a no-take marine reserve and fished areas

Susanna Huneide Thorbjørnsen^{1,2}  | Even Moland^{1,2} | David Villegas-Ríos^{3,4} |
Katinka Bleeker^{1,2} | Halvor Knutsen^{1,2} | Esben Moland Olsen^{1,2}

¹Centre for Coastal Research, Department of Natural Sciences, University of Agder, Kristiansand, Norway

²Institute of Marine Research, Flødevigen, His, Norway

³IMEDEA, Instituto Mediterráneo de Estudios Avanzados (CSIC-UIB), Department of Ecology and Marine Resources, Ichthyology Group, Esporles, Balearic Islands, Spain

⁴IIM, Instituto de Investigaciones Marinas (CSIC), Department of Ecology and Marine Resources, Fisheries Ecology Group, Vigo, Pontevedra, Spain

Correspondence

Susanna Huneide Thorbjørnsen, Institute of Marine Research, Nye Flødevigveien 20, N-4817 His, Norway.
Email: susanna.thorbjornsen@gmail.com

Funding information

Research Council of Norway, Grant/Award Number: 201917 PROMAR; FP7 ERA-Net BiodivERSA, Grant/Award Number: 225592 BUFFER; Marie Skłodowska-Curie grant, Grant/Award Number: 793627 (BEMAR); European Regional Development Fund (Interreg IVa, MarGen II project); County Governor, Aust-Agder

Abstract

Marine reserves can protect fish populations by increasing abundance and body size, but less is known about the effect of protection on fish behaviour. We looked for individual consistency in movement behaviours of sea trout in the marine habitat using acoustic telemetry to investigate whether they represent personality traits and if so, do they affect survival in relation to protection offered by a marine reserve. Home range size had a repeatability of 0.21, suggesting that it represents a personality trait, while mean swimming depth, activity and diurnal vertical migration were not repeatable movement behaviours. The effect of home range size on survival differed depending on the proportion of time fish spent in the reserve, where individuals spending more time in the reserve experienced a decrease in survival with larger home ranges while individuals spending little time in the reserve experienced an increase in survival with larger home ranges. We suggest that the diversity of fish home range sizes could be preserved by establishing networks of marine reserves encompassing different habitat types, ensuring both a heterogeneity in environmental conditions and fishing pressure.

KEYWORDS

acoustic telemetry, harvest selection, home range, movement, personality, repeatability, salmonids, spatial ecology

1 | INTRODUCTION

Fishing-induced evolution and the consequences for populations have now been extensively documented (Kuparinen & Festa-Bianchet, 2017). For example, selective fisheries may alter life-history traits in a population by causing a shift towards maturation at earlier ages and smaller body sizes (Kuparinen et al., 2016; Olsen et al., 2004). However, fishing-induced evolution of behaviour has received far less attention (Diaz Pauli & Sih, 2017). Interestingly, growth rate can be related to behavioural expression, and a selection regime targeting

larger individuals may reduce the overall boldness in the population compared with a selection regime where small individuals are targeted (Biro & Post, 2008; Uusi-Heikkilä et al., 2015). Harvesting may also select directly on behaviour (Uusi-Heikkilä et al., 2008). For example, passive fishing gear can select against traits such as strong diel vertical migration (Olsen et al., 2012) and large home ranges (Alós et al., 2016) and lead to increased timidity (Arlinghaus et al., 2017), while active fishing gear such as trawling may favour bolder individuals (Andersen et al., 2018; Diaz Pauli et al., 2015). Moreover, since the vulnerability to certain harvest conditions may vary from one fish

This is an open access article under the terms of the Creative Commons Attribution License, which permits use, distribution and reproduction in any medium, provided the original work is properly cited.

© 2021 The Authors. *Evolutionary Applications* published by John Wiley & Sons Ltd

species to another (Killen et al., 2015), species-specific information on behavioural responses to fishing restrictions and protection will be important for management.

Personality is consistent individual differences in behaviour over time and through contexts (Réale et al., 2007). Different behavioural strategies will be favoured in response to changes in a range of environmental variables, including food availability, population density and predator density, which is an important aspect in understanding their maintenance (Dingemanse & Réale, 2013). Assessing the heritability of behavioural traits can be difficult, and repeatability may be used as a proxy (Dochtermann et al., 2015). Previously, studies on repeatability of behaviour generally have been conducted in the laboratory, but more recently researchers have investigated repeatability of spatial behavioural traits also in the wild (Harrison et al., 2014; Villegas-Ríos et al., 2017). Such studies are important for understanding how behavioural variation is maintained in nature, which in turn may provide useful input to adapting conservation strategies.

Marine reserves have long been used as a conservation tool to protect against depletion from fishing (Lester et al., 2009). However, it is unclear to what extent marine reserves may also help to preserve behavioural variation within populations by neutralizing fishing-induced selection (Baskett & Barnett, 2015). Interestingly, marine reserves could drive unanticipated selection on behaviour due to their spatial configuration in relation to the spatial movements of the individuals, which might ultimately erode expected spillover benefits (Villegas-Ríos et al., 2017). It is important thus to understand how selection may differ between harvested and protected areas and to what degree marine reserves may help in maintaining the behavioural diversity within populations, which ultimately represent resilience to environmental change (Dingemanse et al., 2004).

We used acoustic telemetry to quantify movement behaviour and its repeatability for anadromous brown trout (*Salmo trutta*) studied for up to 20 months in marine habitats in a Southern Norwegian fjord. We hypothesized that sea trout movement behaviour, here quantified as monthly averages of the movement metrics home range, mean swimming depth, activity and diurnal vertical migration, was repeatable among individuals and represented an aspect of their personality. Marine reserves may alter the fitness of the individuals depending on how and where they move. Therefore, we further hypothesized that selection on trout behaviour would differ between fished and protected areas.

2 | MATERIALS AND METHODS

2.1 | Study species

The brown trout (*Salmo trutta*) is a salmonid species in which anadromous populations are called sea trout. Sea trout have a highly variable life history with some individuals spending only the summer at sea, while others spend most of their time in marine areas only returning to the river to spawn during fall (Klemetsen et al., 2003). Marine migrations are motivated by access to more food,

with important trade-offs being adjustment to different salinities, increased energetic cost of movement and a potentially higher predation risk (Thorstad et al., 2016). The balance of these trade-offs is likely an important part of the explanation for the diversity of migration strategies within populations (Thorstad et al., 2016) and population differentiation between streams (Knutson et al., 2001; Olsen et al., 2006). In Norway, fishing for sea trout in marine habitats is recreational and permitted all year. Fishing can only be done using hook-and-line, except for one month in summer where specialized traps are permitted in the southern part of Norway. The minimum legal size for sea trout in the marine habitat in Norway is 35 cm. In the fjord, potential predators of sea trout are, among others, gulls, cormorants (*Phalacrocorax carbo*), harbour seals (*Phoca vitulina*) and gadids, as reported from a study system in western Norway (Jonsson & Jonsson, 2009).

2.2 | Study system and data collection

Movement data were collected in the Tvedestrand fjord (3.8 km², max depth: 87 m) located in southern Norway between spring 2013 and fall 2017 (Figure 1). A telemetry array consisting of 50 Vemco VR2-W receivers (VEMCO Ltd.) was deployed in the fjord, with the receivers being attached to moorings and kept at three metres depth aided by subsurface buoys (for more details, see Villegas-Ríos, Réale et al., 2017). One receiver was located close to the spawning river, Østeråbekken, in order to monitor river migrations, and three receivers located in the outer part of the fjord served as a gate to detect individuals dispersing towards the outer fjord and sea areas. The high density of receivers ensured a good coverage of the fjord (see also Supporting Information, Thorbjørnsen et al., 2019). A marine protected area (1.5 km²) prohibiting all types of fishing was established within the spatial coverage of the telemetry array in 2012. Fishing is also prohibited in Østeråbekken and up to 100 m from the outlet of the stream.

Sea trout were caught around the centre islands of the fjord in 2013 (April: $n = 3$; May: $n = 26$; September: $n = 24$; November: $n = 7$), 2015 (June: $n = 3$; October: $n = 14$; November: $n = 5$) and 2016 (April: $n = 4$; May: $n = 7$) using a beach seine, and also by electrofishing in the spawning river at 11 November 2016 ($n = 23$). Beach seine was chosen in an attempt to minimize sampling-induced selection of particular behavioural types (Olsen et al., 2012). Electrofishing was added as a complement to increase sample size in 2016. Individuals were anaesthetized with clove oil, and a transmitter was inserted in the abdominal cavity (for details, see Olsen et al., 2012). We used Vemco V9P and V13P transmitters, which had a maximum battery life of 508–696 and 1292 days, respectively. Signals were emitted with a random delay of 180 ± 70 s. Accuracy and resolution of depth measurements were ± 2.5 m and 0.22 m, respectively, and max depth was 50 m or more for the different tags. Sea trout were not externally marked. Fin clips were taken for DNA analysis and preserved in 95% ethanol.

In total, 116 sea trout (mean body length: 337 mm, range: 215–635 mm) were caught, tagged and monitored in the Tvedestrand fjord during a 1669-day study period (spring 2013–fall 2017). A total

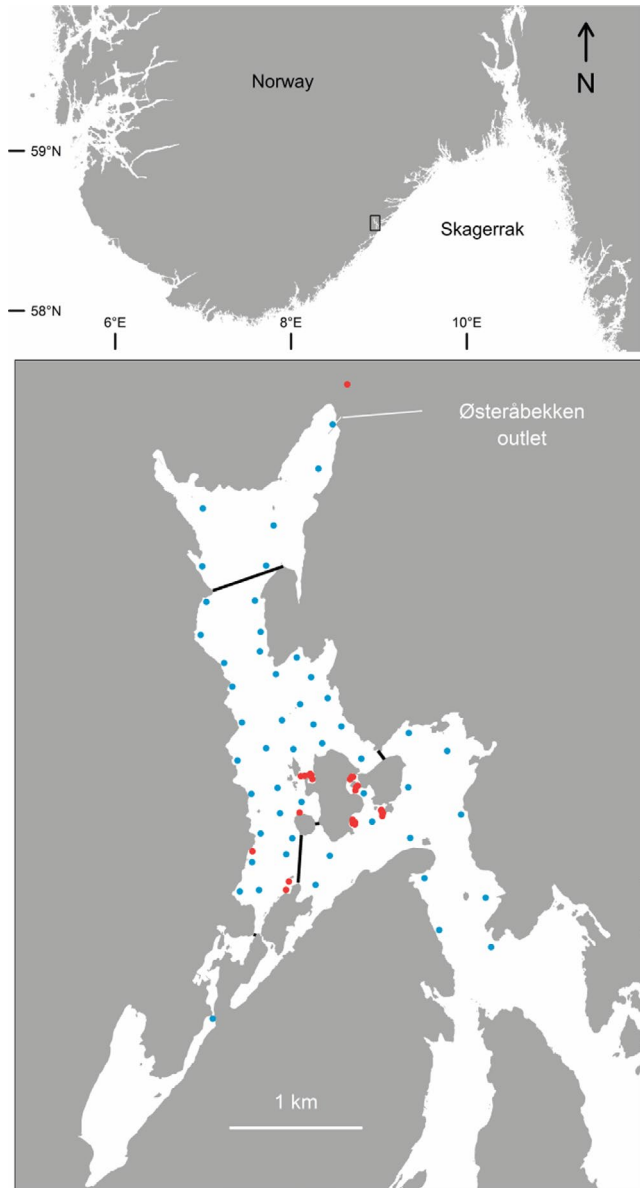


FIGURE 1 Map of the Tvedestrand fjord (below) and its location along the Norwegian Skagerrak coast (above). The marine reserve in the centre of the fjord is delineated with black lines. Blue dots represent receiver locations, and red dots represent capture locations

of 20 individuals were excluded from the study due to tag malfunction ($n = 4$), post-surgical mortality ($n = 5$) or limited presence in the study area (<14 days, $n = 11$). Time spent in the study ranged from 1 to 20 months. Initial data exploration revealed that sex had no effect on any behavioural trait.

2.3 | Data preparation and estimation of behavioural metrics

Detections were downloaded from the receivers and processed using the VUE software (VEMCO Ltd.), and further data preparation and

analyses were done in the R environment (R Core Team, 2016). All detections after presumed death were censored, which was defined to have occurred when continuing detections indicated that horizontal and vertical movement had ceased (Olsen et al., 2012). Note that this could also represent transmitter loss. Fish were defined as dispersed after having followed a directional path out of the reserve with final detections occurring at the outermost receivers. Single detections within one day per fish were removed to eliminate potential code collisions and false detections, and above surface depth measurements were defined as NA. Four traits were used to describe the movement behaviour in the marine phase: home range, mean swimming depth, activity and diurnal vertical migration. Monthly replicates were used for all traits. Monthly 95% home ranges were calculated using locations based on position averages (PAVs, centres of activity), following Simpfendorfer et al. (2002). PAVs are weighted average locations within an array of receivers, based on the number of detections at each receiver during a specified time period (Simpfendorfer et al., 2002), in this case 30 min. Home ranges were then calculated from PAVs using kernel utilization distributions (bandwidth = 60, extent = 0.5) using the adehabitatHR package in R (Calenge, 2006). Depth measurements were averaged over months after removing replicated measurements occurring when a signal is detected at more than one receiver. Following Freitas et al. (2016), activity was defined as short-term changes in depth and this was approximated as the standard deviation of depth per hour and then averaged over months. Diurnal vertical migration was calculated as the difference in mean depth from day to night within a calendar day and then averaged over months. Day and night phases were defined by solar elevation data obtained from the National Oceanic & Atmospheric Administration (NOAA) through the mapprools package in R (Bivand & Lewin-Koh, 2018). Only months where the fish was present in the fjord for a minimum of 15 days (not necessarily consecutive) were included in analyses.

2.4 | Repeatability estimation

Univariate mixed-effects models were fitted for each behavioural trait using the nlme package (Pinheiro et al., 2018) in R. For modelling purposes, home range and activity were log-transformed to meet normality assumptions of the residuals. Monthly averages of each behavioural metric served as replicates for individual fish and individual sea trout identity was included as a random effect. We considered a trait to be repeatable when the inclusion of the random effect significantly improved the model fit. Provided that the random effect was supported, repeatability was calculated following Dingemans and Dochtermann (2013) as:

$$\text{Repeatability} = \frac{V_{\text{ind}_0}}{V_{\text{ind}_0} + V_{\text{e}_0}} \quad (1)$$

where V_{ind_0} is the among-individual variance and V_{e_0} is the within-individual variance. Model selection was done in two steps: (1) selecting the overall model structure by assessing if including

the identity of the fish as a random effect and temporal autocorrelation between months improved the model (method = restricted maximum likelihood), followed by (2) selecting the fixed effects structure (method = maximum likelihood). Model selection was done using AIC-values, and a minimum reduction of >2 units was required to assign significant improvement. When two or more models received similar support, the model with the simplest structure was selected. Fixed effects included in the models were body length (standardized to mean = 0, SD = 1), season (categorical variable with four levels, as defined by the UK calendar with spring starting on March 1), sex and capture location (two levels: fjord or river). Sex was determined using a sex-determining marker loci based on Eisbrenner et al. (2014).

2.5 | Survival

A survival curve was generated by computing a Kaplan–Meier estimator for right-censored data (Cox & Oakes, 1984) using the 'survival' package in R (Therneau, 2015). Day of tagging was set to 0 for all individuals. Furthermore, a Cox proportional hazards regression model was used to assess the fixed effects of home range size and reserve use on survival. Reserve use was included in models either as the proportion of time spent in the reserve given that the fish was in the study area (calculated based on the location of PAVs), or as capture location (two levels: reserve or fished area), which served as a proxy for core area. Fish that were tagged on the river were excluded from this analysis. Both home range size and proportion of time spent in the reserve were calculated as the average of monthly estimates from tagging until death or the end of the study. Home range sizes were log-transformed to meet normality assumptions. Additionally, the fixed effects fish length and season of capture (two levels: spring, as defined by the spring tagging season lasting from April to June, and fall, as defined by the fall tagging season lasting from September to November) were also included in all models. Model selection based on AIC was done in two steps: (1) selecting the best model structure related to the main variables of interest (home range size, proportion of time spent in the reserve, tagging location), including interaction effects between home range size and proportion of time spent in the reserve and home range size and capture location, and (2) selecting the best model related to the additional covariates body length and season of capture.

3 | RESULTS

Home range size was a repeatable movement trait (repeatability = 0.21, Table S1), while mean swimming depth, activity and diurnal vertical migration were not (Tables S2–S4). Mean monthly home range size was 0.407 km² (range: 0.065–2.14 km²), increased with body length, and was larger for fish caught in the fjord than fish caught in the river (Table 1, Figure S1). Home range size was also

affected by season, being the largest in spring, followed by fall and summer, and the smallest in winter (Table 1).

Analysis of monthly mean swimming depth (mean = 2.27 m, range: 0.35–9.44 m) showed that fish caught in the fjord swam deeper than fish caught in the river (Table 1, Figure S1). Mean swimming depth was also affected by an interaction between fish body length and season. Mean swimming depth increased with body length and differed between seasons, with fish being located at more shallow depths during fall compared with all other seasons. The interaction between body length and season indicated a stronger positive effect of body length on mean swimming depth in summer, followed by spring, winter and fall (Table 1).

Activity (mean = 0.47 m, range: 0.018–3.67) increased with body length and was higher for fish caught in the fjord (Table 1, Figure S1). Activity differed between the seasons, and fish were most active during spring and summer, and least active during fall and winter (Table 1).

Diurnal vertical migration, the difference in mean depth from day to night (mean = 0.95 m, range: –0.75 to 5.08), was larger for fish caught in the fjord than fish caught in the river (Figure S1) and was affected by an interaction between body length and season (Table 1). Diurnal vertical migration increased with body length and differed between seasons, with fish having a larger daily movement span during spring and summer than in winter and fall. The interaction between body length and season indicated a stronger positive effect of body length on diurnal vertical migration in spring and summer than in winter and fall (Table 1).

Including autocorrelation led to significant improvement of all models with a behavioural trait as the response variable (Tables S1–S4).

Estimated median survival was 323 days (10.8 months, Figure 2). At this point in the curve, estimated survival was 0.487 (95% CI 0.384–0.617). The best model predicting survival included average monthly home range size, proportion of time spent in the reserve and the interaction between these, in addition to season of tagging (Table S5). The effect of home range size on survival differed depending on the proportion of time spent in the reserve (Figure 3, Table 2). Larger home range sizes increased survival for individuals spending little time in the reserve whereas it decreased survival for individuals spending a large amount of time in the reserve. The effect of home range size on survival went from positive to negative when individuals spent more than 48% of their time inside the reserve. For example, model predictions showed that if an individual spent 25% of its time in the reserve, an increase in home range size from 0.265 km² to 0.587 km² would increase survival at day 386 (last recorded mortality event) by 20% (Figure 3). In contrast, model predictions showed that if an individual spent 75% of its time in the reserve, an increase in home range size from 0.265 km² to 0.587 km² would decrease survival at day 386 by 27%. A home range size of 0.265 km² corresponds to the 1st quartile of home range sizes, while a home range size of 0.587 km² corresponds to the 3rd quartile of home range sizes. Survival was higher for fish tagged in the fall than fish tagged in the spring.

TABLE 1 Summary of selected linear mixed-effects and lme models explaining movement behaviour in sea trout

| Response | Parameter | Estimate | SE | df | p-value |
|-------------------------|----------------------------|-----------|---------|-------|---------|
| Home range | Intercept | 12.1 | 0.224 | 272 | <0.001 |
| | Length | 0.134 | 0.0666 | 75 | 0.048 |
| | Capture location, Fjord | 0.604 | 0.224 | 75 | 0.0086 |
| | Season, Winter | -0.342 | 0.123 | 272 | 0.0058 |
| | Season, Spring | 0.177 | 0.118 | 272 | 0.135 |
| | Season, Summer | -0.145 | 0.111 | 272 | 0.193 |
| | Variance, Intercept | 0.3625 | | | |
| | Variance, Residual | 0.6945 | | | |
| | Mean depth | Intercept | 0.678 | 0.331 | 324 |
| Length | | 0.127 | 0.152 | 324 | 0.404 |
| Capture location, Fjord | | 0.996 | 0.326 | 324 | 0.0024 |
| Season, Winter | | 0.487 | 0.219 | 324 | 0.0268 |
| Season, Spring | | 0.881 | 0.203 | 324 | <0.001 |
| Season, Summer | | 0.827 | 0.190 | 324 | <0.001 |
| Season, Winter:Length | | 0.133 | 0.227 | 324 | 0.560 |
| Season, Spring:Length | | 0.441 | 0.213 | 324 | 0.0395 |
| Season, Summer:Length | | 0.671 | 0.206 | 324 | 0.0012 |
| Activity | | Intercept | -1.67 | 0.174 | 322 |
| | Length | 0.251 | 0.0536 | 322 | <0.001 |
| | Capture location, Fjord | 0.445 | 0.175 | 322 | 0.0114 |
| | Season, Winter | -0.0953 | 0.105 | 322 | 0.364 |
| | Season, Spring | 0.317 | 0.0977 | 322 | 0.0013 |
| | Season, Summer | 0.339 | 0.0896 | 322 | <0.001 |
| | Diurnal vertical migration | Intercept | 0.00313 | 0.231 | 279 |
| Length | | 0.155 | 0.103 | 279 | 0.133 |
| Capture location, Fjord | | 0.475 | 0.224 | 279 | 0.0348 |
| Season, Winter | | 0.00867 | 0.156 | 279 | 0.956 |
| Season, Spring | | 0.716 | 0.144 | 279 | <0.001 |
| Season, Summer | | 0.643 | 0.138 | 279 | <0.001 |
| Season, Winter:Length | | 0.0835 | 0.155 | 279 | 0.590 |
| Season, Spring:Length | | 0.476 | 0.143 | 279 | 0.001 |
| Season, Summer:Length | | 0.280 | 0.140 | 279 | 0.046 |

Note: Associated parameter estimates, standard errors (SE), degrees of freedom (df) and *p*-values are given.

4 | DISCUSSION

Sea trout revealed individual consistency in home range size over a period of several months or even years, reflecting that home range can be considered an aspect of personality. Further, we found that

home range size affected survival, and this relationship differed depending on the proportion of time the fish spent inside the reserve. For individuals that spent more than 48% of their time in the reserve, larger home ranges were associated with decreased survival, while individuals that spent less than 48% of their time in the reserve

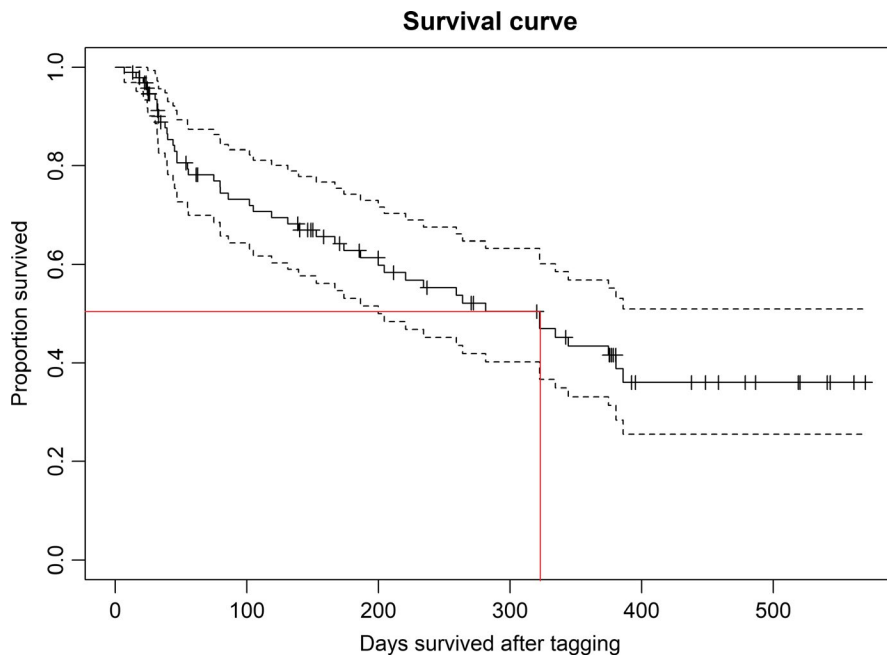


FIGURE 2 Right-censored Kaplan–Meyer survival curve for sea trout in the Tvedestrand fjord. Red lines show median survival at 323 days. Tagging day was set to zero for all individuals. Vertical tick marks indicate right-censored events where an individual was no longer tracked due to dispersal or end of study or battery life

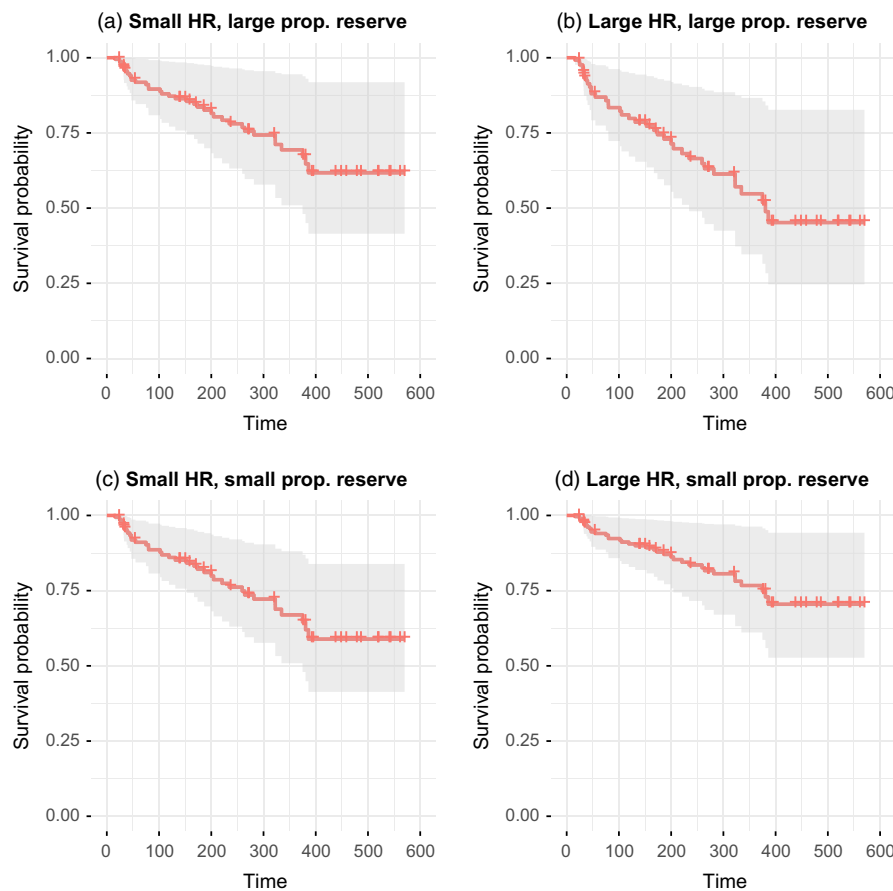


FIGURE 3 Survival curves for sea trout resulting from the Cox proportional hazards regression model with home range size, proportion of time spent in the reserve and season of tagging as explanatory variables. The four panels show different combinations of home range size and proportion of time spent in the reserve: (a) home range size = 0.265 km², proportion of time in the reserve = 0.75; (b) home range size = 0.587 km², proportion of time in the reserve = 0.75; (c) home range size = 0.265 km², proportion of time in the reserve = 0.25; (d) home range size = 0.587 km², proportion of time in the reserve = 0.25. A home range size of 0.265 km² corresponds to the 1st quartile of home range sizes, while a home range size of 0.587 km² corresponds to the 3rd quartile of home range sizes. Season of tagging had value 'fall' in all survival curves

experienced increased survival with increasing home range size. In other words, the fitness landscape of sea trout appears to be influenced by spatial management, here represented by a no-take marine reserve. As discussed below, this suggests that fish behaviour might evolve in response to fishing and therefore certain fishery management measures.

We found that home range size had a repeatability of 0.21, indicating that 21% of the variation in home range size is variation that occurs among individuals. This is comparable to the behavioural trait mean repeatability of 0.37 overall and 0.32 for fish previously reported in a meta-analysis by Bell et al. (2009). Moreover, our results confirm previous studies showing repeatable home range in wild fish

TABLE 2 Regression coefficients, hazard ratios, standard error (SE) of the regression coefficients and *p*-values from the Cox proportional hazards regression model

| Parameter | Reg. coef. | Hazard ratio | SE | <i>p</i> -value |
|--|------------|------------------------|--------|-----------------|
| Home range | -1.092 | 0.3355 | 0.3854 | <0.01 |
| Proportion of time in reserve | -28.77 | 3.19×10^{-13} | 9.775 | <0.01 |
| Season of tagging Spring | 1.032 | 2.807 | 0.3754 | <0.01 |
| Home range:Proportion of time in reserve | 2.29 | 9.87 | 0.7639 | <0.01 |

Note: *N* = 69, number of events = 38.

(0.43 for Atlantic cod *Gadus morhua*; Villegas-Ríos, Réale et al., 2017; 0.33 for burbot *Lota lota*; Harrison et al., 2014), suggesting that consistent movement behaviour may be a general pattern for aquatic organisms. Individual variation in home range sizes has also been shown in mammals, for example for moose (*Alces alces*; van Beest et al., 2011). Repeatability was not detected for any depth-related trait. Note that trout mainly utilized shallow depths, which means that we may not have been able to detect fine-scale differences in depth use within the given accuracy and resolution of depth measurements. In future studies of fine-scale depth use, tags with higher resolution would be advisable.

Our main finding is that the effect of home range size on survival differed depending on how much time the fish spent in the reserve. For sea trout that spent more than 48% of their time in the reserve survival decreased with increasing home range size. Here, a small home range implies spending little time in the fished area (i.e. at risk of being fished). Consistent removal of fish that strand out beyond reserve boundaries may eventually lead to selection against large home ranges in marine reserves (Villegas-Ríos, Moland et al., 2017). For sea trout that spent less than 48% of their time in the reserve, survival increased with increasing home range. Note that this is the opposite pattern as previously found by both Alós et al. (2016) who reported selection against large home ranges in harvested areas, and Härkönen et al. (2014) finding that being explorative is linked to an increased vulnerability to angling in brown trout. Overall, there is contrasting evidence on the relationship between home range and surviving the fishery. Monk and Arlinghaus (2017) report no effect of swimming distance or activity space on vulnerability to capture by angling, while Olsen et al. (2012) report increased fishery survival for fish that displayed extensive horizontal shifts. Interestingly, individuals that express more risky behaviours in the wild, including exploration, experience increased survival (Moiron et al., 2020). Risky behaviours may lead to acquiring more resources followed by an increase in natural survival (Moiron et al., 2020). Having a larger home range size may be one such risky behaviour. Furthermore, it is less obvious why a large home range mainly located outside the reserve yields better survival than a large home range mainly located inside the reserve. A study with replicated protected-unprotected area pairs could help to investigate

whether the patterns found in this study are general patterns. These findings, combined with the fact that home range is repeatable and therefore likely partly heritable (Dochtermann et al., 2015), may entail evolutionary consequences for populations that are partially protected by marine reserves. That said, any local evolutionary change will also depend on the level of gene flow (Lenormand, 2002). In accordance with estimates of how much additive genetic variation contributes to personality, Dochtermann et al. (2015) estimated that the ratio of heritability to repeatability collected from literature averaged at 0.52 and ranged from 0 to 0.96 (Dochtermann et al., 2015). Few studies investigate heritability of behaviour in sea trout, but in a laboratory study on adfluvial brown trout, Kortet et al. (2014) found heritability of 0.14 (± 0.096) for the stress response 'tendency to freeze', but no heritability for boldness, exploration and aggression. To the best of our knowledge, there are no estimates of heritability of sea trout behaviour in the wild. Our paper is the first to present estimates of repeatability of sea trout behaviour in the wild, indicative of additive genetic variation (Dochtermann et al., 2015). In addition to additive genetic variation, repeatability may also reflect learning (Adriaenssens & Johnsson, 2011) and individual variation in utilizing heterogeneous environments (Bell et al., 2009). Hence, repeatability of home range size may also, to some degree, reflect individual differences in habitat use (Bell et al., 2009).

Body length affected all movement traits, with larger fish having larger home ranges, utilizing a larger range of depths and having a higher activity. As survival was affected by home range size, this may imply correlated selection on body length. However, body length did not affect survival directly. Home ranges were the largest in spring, and fish were more active during spring and summer than fall and winter. This is in accordance with sea trout intensifying their food search as temperatures increase during spring and summer (Klemetsen et al., 2003). Fish also swam deeper during spring and summer, which can be associated both with different habitat use and that the trout seek out colder water temperatures optimal for growth when surface temperatures rise (Eldøy et al., 2017; Kristensen et al., 2018). Fish tagged in the sea had larger home ranges, utilized a larger range of depths and had higher activity than fish tagged in the river.

Median survival in the wild was close to 11 months, and survival was higher for fish tagged in the fall. The latter could be explained by the upcoming spawning ascent, where sea trout will receive protection from fishing and experience a lower predation risk in the river (Thorstad et al., 2016). In general, trout survival is higher in freshwater as compared to sea (Solomon, 2006), and the duration of migration varies both within populations and among populations and latitudes (Klemetsen et al., 2003). This implies that yearly survival will vary substantially between river systems. Return rates from 193 sea trout tagged in the nearby river Storelva (<5 km from our study system) revealed 40% survival for trout spending one or two years at sea (Haraldstad, 2015). Survival might have been underestimated due to tag excretion, which would have led individuals to be falsely defined as dead. Also, there might be a negative effect of tagging on survival. A study on gastrically tagged salmonids found that small (9 mm) and large

(13 mm) tags reduced survival from 94% in the control group to 90% and 72%, respectively (Kennedy et al., 2018). However, there are differences in tagging procedures between that study and our study, including tag positioning, time from capture to tagging and type of sedation agent, that may have affected survival.

Preserving a spectrum of different personalities may help sustain a population's resilience to environmental change, as different personalities are favoured across variable environmental conditions (Dingemans et al., 2004). Interestingly, fish with different personalities adjust their behaviour differently when faced with environmental change (Villegas-Ríos et al., 2018). Reactive fish (being less bold, exploratory and aggressive than proactive fish) may reduce their home ranges in response to increasing temperatures, while proactive maintain, or even slightly increase theirs (Villegas-Ríos et al., 2018). This could further enhance potential fishing-induced selection towards smaller home range sizes for proactive fish. Furthermore, spreading fishing effort over a range of habitats could help reduce capture bias, as different environmental conditions favour different behaviours (Killen et al., 2016). Lastly, a study of wild-collected guppy populations showed that reproductive behaviour diversified in populations that were exposed to temporal heterogeneity in predator biomass (Barbosa et al., 2018). Reserves on the other hand provide spatial heterogeneity in 'predator biomass'.

Our results have clear management implications. The fact that individually consistent home range size may affect survival differently inside and outside marine reserves implies that, ideally, a mosaic of marine reserves and areas (partially) open to harvest, representing a variation in fishing pressure, can provide a heterogeneous selection regime that can oppose directional selection on behaviour.

ACKNOWLEDGEMENTS

Animal handling and tagging were conducted under ethical guidelines approved by the Norwegian Animal Research Authority (Forsøksdyrutvalget), permission # 5332 'Habitat use and movement of sea trout studied by acoustic telemetry inside and outside marine protected areas'. Our study was funded by the Research Council of Norway (grant No 201917 PROMAR), the FP7 ERA-Net BiodivERsA (grant No 225592 BUFFER), the European Union's Horizon 2020 research and innovation programme under the Marie Skłodowska-Curie grant agreement #793627 (BEMAR), the European Regional Development Fund (Interreg IVa, MarGen II project) and the environmental officer at the County Governor, Aust-Agder. We thank JA Knutsen and CB Freitas for field and laboratory assistance.

CONFLICT OF INTEREST

None declared.

DATA AVAILABILITY STATEMENT

Data are available from the Dryad Digital Repository: <https://doi.org/10.5061/dryad.gqnk98sms>

ORCID

Susanna Huneide Thorbjørnsen  <https://orcid.org/0000-0001-7589-2339>

REFERENCES

- Adriaenssens, B., & Johnsson, J. I. (2011). Learning and context-specific exploration behaviour in hatchery and wild brown trout. *Applied Animal Behaviour Science*, 132, 90–99.
- Alós, J., Palmer, M., Rosselló, R., & Arlinghaus, R. (2016). Fast and behavior-selective exploitation of a marine fish targeted by anglers. *Scientific Reports*, 6, 38093.
- Andersen, K. H., Marty, L., & Arlinghaus, R. (2018). Evolution of boldness and life history in response to selective harvesting. *Canadian Journal of Fisheries and Aquatic Science*, 75, 271–281.
- Arlinghaus, R., Laskowski, K. L., Alós, J., Klefoth, T., Monk, C. T., Nakayama, S., & Schröder, A. (2017). Passive gear-induced timidity syndrome in wild fish populations and its potential ecological and managerial implications. *Fish and Fisheries*, 18, 360–373.
- Barbosa, M., Deacon, A., Janeiro, M. J., Ramnarine, I., Morrissey, M. B., & Magurran, A. E. (2018). Individual variation in reproductive behaviour is linked to temporal heterogeneity in predation risk. *Proceedings of the Royal Society B*, 285, 20171499.
- Baskett, M. L., & Barnett, L. A. K. (2015). The ecological and evolutionary consequences of marine reserves. *Annual Review of Ecology, Evolution, and Systematics*, 46, 49–73.
- Bell, A. M., Hankison, S. J., & Laskowski, K. L. (2009). The repeatability of behaviour: A meta-analysis. *Animal Behavior*, 77, 771–783.
- Biro, P. A., & Post, J. R. (2008). Rapid depletion of genotypes with fast growth and bold personality traits from harvested fish populations. *Proceedings of the National Academy of Sciences USA*, 105, 2919–2922.
- Bivand, R., & Lewin-Koh, N. (2018). maptools: Tools for handling spatial objects. R package version 0.9-4. <https://CRAN.R-project.org/package=maptools>
- Calenge, C. (2006). The package adehabitat for the R software: A tool for the analysis of space and habitat use by animals. *Ecological Modelling*, 197, 516–519.
- Cox, D. R., & Oakes, D. (1984). *Analysis of survival data*. Chapman & Hall.
- Diaz Pauli, B., & Sih, A. (2017). Behavioural responses to human-induced change: Why fishing should not be ignored. *Evolutionary Applications*, 10, 231–240.
- Diaz Pauli, B., Wiech, M., Heino, M., & Utne-Palm, A. C. (2015). Opposite selection on behavioural types by active and passive fishing gears in a simulated guppy *Poecilia reticulata* fishery. *Journal of Fish Biology*, 86, 1030–1045.
- Dingemans, N. J., Both, C., Drent, P. J., & Tinbergen, J. M. (2004). Fitness consequences of avian personalities in a fluctuating environment. *Proceedings of the Royal Society of London. Series B: Biological Sciences*, 271, 847–852.
- Dingemans, N. J., & Dochtermann, N. A. (2013). Quantifying individual variation in behaviour: Mixed-effect modelling approaches. *Journal of Animal Ecology*, 82, 39–54.
- Dingemans, N. J., & Réale, D. (2013). What is the evidence that natural selection maintains variation in animal personalities? In C. Carere & D. Maestripieri (Eds.), *Animal personalities: Behaviour, physiology and evolution* (pp. 201–220). The University of Chicago Press.
- Dochtermann, N. A., Schwab, T., & Sih, A. (2015). The contribution of additive genetic variation to personality variation: Heritability of personality. *Proceedings of the Royal Society B: Biological Sciences*, 282, 20142201.
- Eisbrenner, W. D., Botwright, N., Cook, M., Davidson, E. A., Dominik, S., Elliott, N. G., Henshall, J., Jones, S. L., Kube, P. D., Lubieniecki, K. P., Peng, S., & Davidson, W. S. (2014). Evidence for multiple sex-determining loci in Tasmanian Atlantic salmon (*Salmo salar*). *Heredity*, 113, 86–92.
- Eldøy, S. H., Davidsen, J. G., Thorstad, E. B., Whoriskey, F. G., Aarestrup, K., Næsje, T. F., Rønning, L., Sjørnsen, A. D., Rikardsen, A. H., & Arnekleiv, J. V. (2017). Marine depth use of sea trout *Salmo trutta* in fjord areas of central Norway. *Journal of Fish Biology*, 91, 1268–1283.

- Freitas, C., Olsen, E. M., Knutsen, H., Albretsen, J., & Moland, E. (2016). Temperature-associated habitat selection in a cold-water marine fish. *Journal of Animal Ecology*, *85*, 628–637.
- Haraldstad, T. (2015). *Sjøoverlevelse til sjøauren i Storelva – En oppsummering av resultater fra Pit-merkeforsøk 2010–2014*. Norwegian Institute of Water Research. (In Norwegian).
- Härkönen, L., Hyvärinen, P., Paappanen, J., & Vainikka, A. (2014). Explorative behavior increases vulnerability to angling in hatchery-reared brown trout (*Salmo trutta*). *Canadian Journal of Fisheries and Aquatic Science*, *71*, 1900–1909.
- Harrison, P. M., Gutowsky, L. F. G., Martins, E. G., Patterson, D. A., Cooke, S. J., & Power, M. (2014). Personality-dependent spatial ecology occurs independently from dispersal in wild burbot (*Lota lota*). *Behavioral Ecology*, *26*(2), 483–492.
- Jonsson, B., & Jonsson, N. (2009). Migratory timing, marine survival and growth of anadromous brown trout *Salmo trutta* in the River Imsa, Norway. *Journal of Fish Biology*, *74*, 621–638.
- Kennedy, R. J., Allen, M., & Wilson, R. (2018). Tag retention and mortality of adult Atlantic salmon *Salmo salar* gastrically tagged with different sized telemetry transmitters. *Journal of Fish Biology*, *92*, 2016–2021.
- Killen, S., Adriaenssens, B., Marras, S., Claireaux, G., & Cooke, S. J. (2016). Context dependency of trait repeatability and its relevance for management and conservation of fish populations. *Conservation Physiology*, *4*, 7. <https://doi.org/10.1093/conphys/cow007>
- Killen, S. S., Nati, J. J. H., & Suski, C. D. (2015). Vulnerability of individual fish to capture by trawling is influenced by capacity for anaerobic metabolism. *Proceedings of the Royal Society B*, *282*, 20150603.
- Klemetsen, A., Amundsen, P.-A., Dempson, J. B., Jonsson, B., Jonsson, N., O'Connell, M. F., & Mortensen, E. (2003). Atlantic salmon *Salmo salar* L., brown trout *Salmo trutta* L. and Arctic charr *Salvelinus alpinus* (L.): A review of aspects of their life histories. *Ecology of Freshwater Fish*, *12*, 1–59.
- Knutsen, H., Knutsen, J. A., & Jorde, P. E. (2001). Genetic evidence for mixed origin of recolonized sea trout populations. *Heredity*, *87*, 207–214.
- Kortet, R., Vainikka, A., Janhunnen, M., Piironen, J., & Hyvärinen, P. (2014). Behavioral variation shows heritability in juvenile brown trout *Salmo trutta*. *Behavioral Ecology and Sociobiology*, *68*, 927–934.
- Kristensen, M. L., Righton, D., del Villar-guerra, D., Baktoft, H., & Aarestrup, K. (2018). Temperature and depth preferences of adult sea trout *Salmo trutta* during the marine migration phase. *Marine Ecology Progress Series*, *599*, 209–224.
- Kuparinen, A., Boit, A., Valdovinos, F. S., Lassaux, H., & Martinez, N. D. (2016). Fishing-induced life-history changes degrade and destabilize harvested ecosystems. *Scientific Reports*, *6*, 22245.
- Kuparinen, A., & Festa-Bianchet, M. (2017). Harvest-induced evolution: Insights from aquatic and terrestrial systems. *Philosophical Transactions of the Royal Society of London. Series B*, *372*, 20160036.
- Lenormand, T. (2002). Gene flow and the limits to natural selection. *Trends in Ecology & Evolution*, *17*, 183–189.
- Lester, S. E., Halpern, B. S., Grorud-Colvert, K., Lubchenco, J., Ruttenberg, B. I., Gaines, S. D., Airamé, S., & Warner, R. R. (2009). Biological effects within no-take marine reserves: A global synthesis. *Marine Ecology Progress Series*, *384*, 33–46.
- Moiron, M., Laskowski, K. L., & Niemelä, P. T. (2020). Individual differences in behaviour explain variation in survival: A meta-analysis. *Ecology Letters*, *23*, 399–408.
- Monk, C. T., & Arlinghaus, R. (2017). Encountering a bait is necessary but insufficient to explain individual variability in vulnerability to angling in two freshwater benthivorous fish in the wild. *PLoS One*, *12*(3), e0173989.
- Olsen, E. M., Heino, M., Lilly, G. R., Morgan, M. J. J., Brattey, J., Ernande, B., & Dieckmann, U. (2004). Maturation trends indicative of rapid evolution preceded the collapse of northern cod. *Nature*, *428*, 932–935.
- Olsen, E. M., Heupel, M. R., Simpfendorfer, C. A., & Moland, E. (2012). Harvest selection on Atlantic cod behavioral traits: Implications for spatial management. *Ecology and Evolution*, *2*, 1549–1562.
- Olsen, E. M., Knutsen, H., Simonsen, J. H., Jonsson, B., & Knutsen, J. A. (2006). Seasonal variation in marine growth of sea trout, *Salmo trutta*, in coastal Skagerrak. *Ecology of Freshwater Fish*, *15*, 446–452.
- Pinheiro, J., Bates, D., DebRoy, S., Sarkar, D., & R Core Team. (2018). Linear and Nonlinear Mixed Effects Models. Version 3.1-137. <https://CRAN.R-project.org/package=nlme>
- R Core Team. (2016). *R: A language and environment for statistical computing*. R Foundation for Statistical Computing.
- Réale, D., Reader, S. M., Sol, D., McDougall, P. T., & Dingemanse, N. J. (2007). Integrating animal temperament within ecology and evolution. *Biological Reviews*, *82*, 291–318.
- Simpfendorfer, C. A., Heupel, M. R., & Hueter, R. E. (2002). Estimation of short-term centers of activity from an array of omnidirectional hydrophones and its use in studying animal movements. *Canadian Journal of Fisheries and Aquatic Science*, *59*, 23–32.
- Solomon, D. J. (2006). Migration as a life-history strategy for the sea trout. In G. Harris & N. Milner (Eds.), *Sea trout – Biology, conservation and management* (pp. 224–233). Blackwell.
- Therneau, T. (2015). A package for survival analysis in S. Version 2.38. <https://CRAN.R-project.org/package=survival>
- Thorbjørnsen, S. H., Moland, E., Simpfendorfer, C., Heupel, M., Knutsen, H., & Olsen, E. M. (2019). Potential of a no-take marine reserve to protect home ranges of anadromous brown trout (*Salmo trutta*). *Ecology and Evolution*, *9*, 417–426. <https://doi.org/10.1002/ece3.4760>
- Thorstad, E. B., Todd, C. D., Uglem, I., Bjørn, P. A., Gargan, P. G., Vollset, K. W., Halttunen, E., Kålås, S., Berg, M., & Finstad, B. (2016). Marine life of the sea trout. *Marine Biology*, *163*, 47.
- Uusi-Heikkilä, S., Whiteley, A. R., Kuparinen, A., Matsumura, S., Venturelli, P. A., Wolter, C., Slate, J., Primmer, C. R., Meinelt, T., Killen, S. S., Bierbach, D., Polverino, G., Ludwig, A., & Arlinghaus, R. (2015). The evolutionary legacy of size-selective harvesting extends from genes to populations. *Evolutionary Applications*, *8*, 597–620.
- Uusi-Heikkilä, S., Wolter, C., Klefoth, T., & Arlinghaus, R. (2008). A behavioral perspective on fishing-induced evolution. *Trends in Ecology & Evolution*, *23*, 419–421.
- van Beest, F. M., Rivrud, I. M., Loe, L. E., Milner, J. M., & Mysterud, A. (2011). What determines variation in home range size across spatiotemporal scales in a large browsing herbivore? *Journal of Animal Ecology*, *80*, 771–785.
- Villegas-Ríos, D., Moland, E., & Olsen, E. M. (2017). Potential of contemporary evolution to erode fishery benefits from marine reserves. *Fish and Fisheries*, *18*, 571–577.
- Villegas-Ríos, D., Réale, D., Freitas, C., Moland, E., & Olsen, E. M. (2017). Individual level consistency and correlations of fish spatial behaviour assessed from aquatic animal telemetry. *Animal Behavior*, *124*, 83–94.
- Villegas-Ríos, D., Réale, D., Freitas, C., Moland, E., & Olsen, E. M. (2018). Personalities influence spatial responses to environmental fluctuations in wild fish. *Journal of Animal Ecology*, *87*(5), 1309–1319.

SUPPORTING INFORMATION

Additional supporting information may be found online in the Supporting Information section.

How to cite this article: Thorbjørnsen SH, Moland E, Villegas-Ríos D, Bleeker K, Knutsen H, Olsen EM. Selection on fish personality differs between a no-take marine reserve and fished areas. *Evol Appl*. 2021;00:1–9. <https://doi.org/10.1111/eva.13242>