

## SGLT2 Inhibition in the Diabetic Kidney—From Mechanisms to Clinical Outcome

Erik J.M. van Bommel, Marcel H.A. Muskiet, Lennart Tonneijck, Mark H.H. Kramer, Max Nieuwdorp, and Daniel H. van Raalte

### Abstract

Diabetic kidney disease not only has become the leading cause for ESRD worldwide but also, highly contributes to increased cardiovascular morbidity and mortality in type 2 diabetes. Despite increased efforts to optimize renal and cardiovascular risk factors, like hyperglycemia, hypertension, obesity, and dyslipidemia, they are often insufficiently controlled in clinical practice. Although current drug interventions mostly target a single risk factor, more substantial improvements of renal and cardiovascular outcomes can be expected when multiple factors are improved simultaneously. Sodium-glucose cotransporter type 2 in the renal proximal tubule reabsorbs approximately 90% of filtered glucose. In type 2 diabetes, the maladaptive upregulation of sodium-glucose cotransporter type 2 contributes to the maintenance of hyperglycemia. Inhibiting these transporters has been shown to effectively improve glycemic control through inducing glycosuria and is generally well tolerated, although patients experience more genital infections. In addition, sodium-glucose cotransporter type 2 inhibitors favorably affect body weight, BP, serum uric acid, and glomerular hyperfiltration. Interestingly, in the recently reported first cardiovascular safety trial with a sodium-glucose cotransporter type 2 inhibitor, empagliflozin improved both renal and cardiovascular outcomes in patients with type 2 diabetes and established cardiovascular disease. Because the benefits were seen rapidly after initiation of therapy and other glucose-lowering agents, with the exception of liraglutide and semaglutide, have not been able to improve cardiovascular outcome, these observations are most likely explained by effects beyond glucose lowering. In this mini review, we present the drug class of sodium-glucose cotransporter type 2 inhibitors, elaborate on currently available renal and cardiovascular outcome data, and discuss how the effects of these agents on renal physiology may explain the data.

*Clin J Am Soc Nephrol* 12: 700–710, 2017. doi: <https://doi.org/10.2215/CJN.06080616>

### Introduction

The increased risk for (micro)vascular complications in type 2 diabetes (T2D), including diabetic kidney disease (DKD), cannot be explained by chronic hyperglycemia alone but involves other risk factors, like obesity, systemic hypertension, and dyslipidemia (1). Despite intensified lifestyle and pharmacologic interventions (*e.g.*, antihyperglycemic agents, statins, and antihypertensives, especially renin-angiotensin system [RAS] blockers) to strictly control these risk factors, the prevalence of DKD continues to rise and has become the leading cause for ESRD worldwide (1,2). Moreover, DKD is strongly associated with cardiovascular disease (CVD) and increases 10-year mortality from 12% in patients with T2D without DKD to 31% in patients with DKD (3). Several novel therapeutic strategies, like dual/triple RAS blockade and sulodexide and bardoxolone therapy, have been explored to further improve renal outcome in diabetes. However, these approaches were either ineffective or harmful, indicating that other avenues should be explored. Although current drug development is largely on the basis of the modification of one risk factor, a single drug that simultaneously improves multiple risk factors in T2D may lead to more salutary renal and cardiovascular outcomes,

especially because they are often insufficiently controlled in clinical practice (4).

The recently introduced selective sodium-glucose cotransporter type 2 (SGLT2) inhibitors improve glycemic control in an insulin-independent manner by blocking glucose reabsorption in the renal proximal tubule, thereby enhancing urinary glucose excretion. SGLT2 inhibitors exert multiple beneficial effects, including reductions in body weight and serum uric acid (SUA) as well as BP lowering and attenuation of glomerular hyperfiltration, which are likely linked to glycosuria-accompanied natriuresis. Collectively, these actions beyond glucose lowering may help to explain the observed renal and cardiovascular benefits of the SGLT2 inhibitor empagliflozin in the large-sized randomized, placebo-controlled cardiovascular outcome trial of empagliflozin (EMPA-REG OUTCOME) (5,6).

Here, we review the mechanism of action and glucose-lowering efficacy of SGLT2 inhibitors, discuss their reported renal benefits in T2D, and address mechanisms beyond glucose lowering by which these benefits may be explained. We will not discuss the importance of renal risk factors in DKD *per se* or the cardiovascular outcome of the EMPA-REG OUTCOME Trial in

Diabetes Center, Department of Internal Medicine, VU University Medical Center, Amsterdam, The Netherlands

### Correspondence:

Dr. Erik J.M. van Bommel, VU University Medical Center, Diabetes Center, Department of Internal Medicine, De Boelelaan 1117, 1081 HV Amsterdam, The Netherlands. Email: [e.vanbommel@vumc.nl](mailto:vanbommel@vumc.nl)

detail, because they have been extensively covered in recent literature (1,7).

### The Kidney, Glucose Handling, and SGLT2 Inhibition

The kidney has an important role in glucose homeostasis through glucose utilization, gluconeogenesis, and tubular glucose reabsorption. In healthy individuals, the kidney accounts for 20%–25% of endogenous glucose production in the fasting state, which increases to about 60% postprandially (8). Furthermore, 180 L plasma is filtered through the glomerulus per 24 hours, meaning that, in individuals with a mean plasma glucose concentration of 100 mg/dl (5.6 mmol/L), 180 g glucose is normally filtered, completely reabsorbed, and returned to the circulation each day. Two transporters that appear sequentially in the proximal tubule are responsible for glucose reabsorption from the filtrate: (1) the high-affinity, low-capacity SGLT2, which couples sodium to glucose reabsorption with a 1:1 stoichiometry in the early (S1) proximal tubule, and (2) the low-affinity, high-capacity SGLT1 in the more distal part (S2/S3) (9). SGLT2 normally accounts for approximately 90% of glucose reabsorption, whereas SGLT1 accounts for the remaining 10% (9).

In T2D, renal changes contribute to the maintenance of hyperglycemia. First, renal gluconeogenesis is increased threefold in this population (8). Second, the maximum reabsorptive capacity for glucose is increased by 30% in T2D (10), whereas the threshold for plasma glucose at which glycosuria first occurs is also raised (10). These latter changes are paralleled by a fourfold upregulation of SGLT2 (and the basolateral facilitative glucose transporter [GLUT2]) expression (11).

On the basis of observations that SGLT2 gene mutations lead to benign glycosuria (familial renal glycosuria) (12) and that pharmacologic blockage of SGLTs effectively reduces plasma glucose in animals with diabetes (13), the proximal tubule of the kidney was targeted to achieve glycemic control in human diabetes. For this, specific SGLT2 inhibitors were developed, because additional SGLT1 inhibition, achieved with the first natural compound phlorizin, provoked intolerable gastrointestinal side effects. Currently, three oral SGLT2 inhibitors (*i.e.*, canagliflozin, dapagliflozin, and empagliflozin) are approved by the US Food and Drug Administration (FDA) and the European Medicines Agency (EMA) for patients with T2D and an eGFR >30 ml/min per 1.73 m<sup>2</sup>, and they are considered reasonable options as second- or third-line antihyperglycemic treatment (2). In a meta-analysis of 45 clinical trials including 11,232 patients with T2D and baseline hemoglobin A1c (HbA1c) of 6.9%–9.2% and excluding severe renal impairment, SGLT2 inhibitors effectively reduced HbA1c by 0.79% when used as monotherapy and 0.61% when used as add-on therapy compared with placebo (14). More compounds within this drug class are in global or regional development (Table 1).

The glucose-lowering mechanism of SGLT2 inhibitors has been detailed in a proof of principle study in patients with well controlled T2D and normal renal function (10). Seven days of dapagliflozin treatment reduced the calculated renal threshold for plasma glucose from 196 to 22 mg/dl (10.9–1.2 mmol/L) (10). Notably, the glucose-lowering efficacy of SGLT2 inhibitors is directly related to the filtered glucose load and thus, is related to not only the

degree of hyperglycemia but also, GFR (15), which explains the reduced glucose-lowering efficacy in patients with T2D and reduced kidney function (Figure 1) (16–18). Interestingly, SGLT2 inhibitor-associated urinary glucose excretion in patients with a normal GFR is only about 60–80 g/d, which is markedly less than can be expected given the complete inhibition of SGLT2 (9). Evident increases in SGLT1-mediated glucose reabsorption account for the 50%–60% of renal glucose reabsorption that persists (9). Other factors also reduce the glucose-lowering efficacy of SGLT2 inhibition, including SGLT2 inhibitor-induced reductions in insulin and increments in glucagon levels, thereby enhancing endogenous glucose production (19).

### SGLT2 Inhibition Seemingly Improves Renal and Cardiovascular Outcome

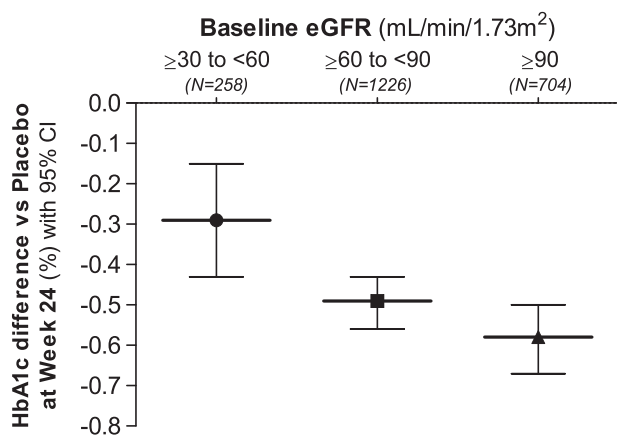
The first in class EMPA-REG OUTCOME Trial, which was designed according to the 2008 US FDA regulations to assess cardiovascular safety and not benefit, compared two doses of empagliflozin (10 and 25 mg/d) with placebo on cardiovascular events in 7020 patients with T2D, established CVD, and eGFR >30 ml/min per 1.73 m<sup>2</sup> (Tables 2 and 3) (6). After a median follow-up of 3.1 years, empagliflozin significantly (albeit by a small margin) improved the occurrence of the primary major adverse cardiovascular event outcome of the trial (cardiovascular death, nonfatal myocardial infarction, and nonfatal stroke) by 14% compared with placebo (hazard ratio [HR], 0.86; 95% confidence interval [95% CI], 0.74 to 0.99; *P*=0.04), which was mainly driven by a significant 38% reduction in cardiovascular death (HR, 0.62; 95% CI, 0.49 to 0.77; *P*<0.001) (6). A nonsignificant 13% reduction in nonfatal myocardial infarction and a 24% nonsignificant increase in nonfatal stroke were observed in the empagliflozin group. Added to the facts that cardiovascular benefit occurred too early (*i.e.*, within months) to be explained by antiatherosclerotic effects and that there was a substantial reduction in hospitalizations for heart failure (HR, 0.65; 95% CI, 0.50 to 0.85; *P*=0.002) makes empagliflozin-induced hemodynamic changes a likely explanation for the observed benefit. Furthermore, empagliflozin-treated patients (pooled doses) had an HR of 0.61 (95% CI, 0.53 to 0.70; *P*<0.001) for the secondary renal outcome of new-onset or worsening of nephropathy (consisting of progression to macroalbuminuria, doubling of serum creatinine accompanied by an eGFR of ≤45 ml/min per 1.73 m<sup>2</sup>, initiation of RRT, or renal death) compared with placebo. The HR was 0.54 (95% CI, 0.40 to 0.75; *P*<0.001) when progression to macroalbuminuria, which may be explained by a concomitant reduction in eGFR, was excluded from the analysis (5). The individual components progression to macroalbuminuria, doubling of serum creatinine accompanied by eGFR of ≤45 ml/min per 1.73 m<sup>2</sup>, and initiation of RRT were significantly reduced (Table 3). However, renal death (three with empagliflozin versus zero with placebo) and incident microalbuminuria (HR, 0.95; 95% CI, 0.87 to 1.04; *P*<0.25) were not affected. Furthermore, because doubling of serum creatinine did not have to be confirmed after a predefined period of time by an additional measurement and the initiation of RRT did not exclude temporary dialysis, discussion has been raised about whether these end points necessarily represented irreversible nephropathy progression (20).

**Table 1. Sodium-glucose cotransporter type 2 inhibitors currently approved or in development (updated on June 7, 2016 with information from summary of product characteristics and correspondence with manufacturers)**

Agent (Trade Name)	Manufacturer	Status	Dosing	Pharmacokinetics/Pharmacodynamics			
				Selectivity SGLT2/SGLT1	T <sub>max</sub> , h	Plasma Half-Life, h	Elimination Route (Recovered Substance)
Dapagliflozin (Forxiga/Farxiga)	AstraZeneca	Approved by EMA (11/2012), FDA (01/2014), PMDA (03/2014)	5–10 mg QD	1400	2.0	12.9	75% with urine, 21% with feces
Canagliflozin (Invokana)	Janssen	Approved by EMA (11/2013), FDA (03/2013), PMDA (06/2014)	100–300 mg QD	160	1–2	10.6–13.1	52% with feces, 34% with urine
Empagliflozin (Jardiance)	Boehringer Ingelheim	Approved by EMA (05/2014), FDA (08/2014), PMDA (12/2014)	10–25 mg QD	5000	1.5	12.4	41% with feces, 54% with urine
Ipragliflozin (Suglat)	Astellas Pharma	Approved by PMDA (01/2014)	25–100 mg QD	570	1.8	12.5	Not reported
Tofogliflozin (Apleway/Deberza)	Sanofi/Kowa	Approved by PMDA (03/2014)	20 mg QD	1875	Not reported	Not reported	76% with urine, 20% with feces
Luseogliflozin (Lusefi)	Taisho Pharmaceutical	Approved by PMDA (03/2014)	2.5–5 mg QD	1770	0.7–2.3	9.1–10.7	Not reported
Ertugliflozin (N.A.)	Merck/Pfizer	Phase 3	1–25 mg QD	2200	1.0	11–17	50% with urine, 41% with feces
Sotagliflozin <sup>a</sup> (N.A.)	Lexicon Pharmaceuticals	Phase 3	400 mg QD	20	Not reported	29.0	Not reported
Remogliflozin etabonate (N.A.)	BHV Pharma	Phase 2B	100–400 mg QD	1100	3.0	4.0–8.7	3% with feces, 93% with urine
Henagliflozin (N.A.)	Jiangsu HengRui Medicine	Phase 1	2.5–200 mg QD	1800	1.5–3.0	11–15.3	Not reported

SGLT2/SGLT1, sodium-glucose cotransporter type 2/sodium-glucose cotransporter type 1; T<sub>max</sub>, time to maximum plasma concentration; EMA, European Medicines Agency; FDA, US Food and Drug Administration; PMDA, Pharmaceuticals and Medical Devices Agency Japan; QD, once daily; N.A., not applicable.

<sup>a</sup>Dual SGLT1/2 inhibitor.



**Figure 1. | Glucose lowering efficacy the SGLT-2 inhibitors dapagliflozin (10 mg once-daily) is reduced with declining eGFR.** This graph represents pooled data from monotherapy as well as add-on therapy studies in patients with type 2 diabetes. Dapagliflozin leads to a lesser placebo-corrected reduction in HbA1c in patients with moderate renal impairment (eGFR ≥30 and <60 mL/min per 1.73 m<sup>2</sup>) at baseline. Similar effects have been observed with canagliflozin (17) and empagliflozin (18). 95% CI, 95% confidence interval; HbA1c, hemoglobin A1c. Modified from ref. 51, with permission.

Interestingly, a recent meta-analysis of regulatory submissions made to United States, European Union, and Japanese drug agencies and 57 prospective randomized, controlled trials (70,910 patients) found that seven different SGLT2 inhibitors all reduced the relative risk (RR) for major adverse cardiovascular events by 16% (95% CI, 5% to 25%; *P*=0.001) (21). Although this indicates a favorable class effect, it should be noted that the EMPA-REG OUTCOME Trial accounted for the majority of cardiovascular events in this analysis. The benefit of other SGLT2 inhibitors on renal

and cardiovascular outcome should thus be confirmed in ongoing dedicated trials (Tables 2 and 3).

Although improved glycemic control with empagliflozin could have contributed to the observed renal and cardiovascular benefits, the small HbA1c reductions in the EMPA-REG OUTCOME Trial (0.45% at 90 weeks and 0.28% at 204 weeks compared with placebo) are unlikely to explain the rapid onset and effect size, especially because no other glucose-lowering agent, except liraglutide and semaglutide in the recently published Liraglutide Effect and Action in Diabetes: Evaluation of Cardiovascular Outcome Results (LEADER) Trial and the Trial to Evaluate Cardiovascular and Other Long-Term Outcomes with Semaglutide in Subjects with Type 2 Diabetes (SUSTAIN-6) (22), has shown to improve cardiovascular outcome (6). Therefore, mechanisms beyond glucose lowering are most probably involved (Figure 2).

### Effects beyond Glucose Lowering

#### Weight Loss

Reducing body weight in T2D favorably affects various renal and cardiovascular risk factors and quality of life but did not improve cardiovascular morbidity and mortality in the Look AHEAD (Action for Health in Diabetes) Study (23). However, a *post hoc* analysis of this lifestyle intervention trial showed that the 2.5% weight loss achieved in the intensive treatment arm compared with the control group reduced the incidence of very high risk (CKD; from the 2013 Kidney Disease Improving Global Outcomes classification) by 31% (24). The fact that achieving or maintaining reduced body weight is often unsuccessful in the overweight or obese T2D population highlights the relevance of glucose-lowering agents that induce weight loss (2), especially because many of the currently available glucose-lowering drugs are associated with weight gain. Clinical trials with SGLT2 inhibitors in patients with T2D showed significant weight reductions of about 1.7 kg or 2.4% compared with placebo (14). A fast decline in body weight is seen during the first weeks of treatment and likely caused by SGLT2 inhibitor-associated osmotic diuresis (25). Then, body weight declines more gradually toward 20 weeks, which is most probably related to reductions in body fat mass (26), and subsequently, it reaches a plateau phase. Interestingly, empagliflozin-treated patients with T2D lost only 3.2 kg after 90 weeks of treatment, whereas on the basis of the calories lost with observed glycosuria (approximately 240–320 kcal/d), the weight loss should have been 11 kg (27). This could be explained by a 13% compensatory increase in caloric intake and confirms earlier findings in diet-induced obese rats (28). Therefore, combining SGLT2 inhibition with strategies that reduce appetite and caloric intake (*e.g.*, glucagon-like peptide-1 receptor agonists) may further enhance body weight reduction in T2D.

#### Antihypertensive Effect

T2D is frequently associated with systemic hypertension, which contributes to the high risk for DKD and cardiovascular events. Although strict BP control is widely recommended (2), the fact that it proves difficult to reach therapeutic targets (usually <140/90 mmHg) in daily practice emphasizes the need for additional BP-lowering strategies (4). SGLT2 inhibitors may be helpful in this regard, because they reduce systolic and diastolic BP by 3.77 and 1.75 mmHg, respectively,

**Table 2. Baseline characteristics of the EMPA-REG OUTCOME Trial**

Baseline Characteristics	Proportion Affected, %
<b>Cardiovascular disease</b>	
Coronary artery disease	75.6
History of myocardial infarction	46.6
History of stroke	23.3
Cardiac failure	10.1
<b>Renal disease</b>	
Microalbuminuria <sup>a</sup>	28.6
Macroalbuminuria <sup>a</sup>	11.0
eGFR=60 to <90 ml/min per 1.73 m <sup>2</sup>	52.2
eGFR<60 ml/min per 1.73 m <sup>2</sup>	25.9

Created with data from the supplemental appendix of the Randomized, Placebo-Controlled Cardiovascular Outcome Trial of Empagliflozin (EMPA-REG OUTCOME) (5,6). At baseline, the study population had an average eGFR of approximately 74 ml/min per 1.73 m<sup>2</sup>.

<sup>a</sup>Microalbuminuria is defined as urinary albumin-to-creatinine ratio of 30–300 mg/g, and macroalbuminuria is defined as urinary albumin-to-creatinine ratio >300 mg/g.

Outcome	Hazard Ratio Compared with Placebo (95% CI)
<b>Prespecified</b>	
Primary MACE (CV death, nonfatal MI, or nonfatal stroke)	0.86 (0.74 to 0.99)
CV death	0.62 (0.49 to 0.77)
All-cause mortality	0.68 (0.57 to 0.82)
Hospitalization for heart failure	0.65 (0.50 to 0.85)
<b>Exploratory</b>	
New onset of macroalbuminuria	0.62 (0.54 to 0.72)
New onset or worsening of DKD	0.61 (0.53 to 0.70)
Doubling of serum creatinine <sup>a</sup>	0.56 (0.39 to 0.79)
Initiation of RRT	0.45 (0.21 to 0.97)

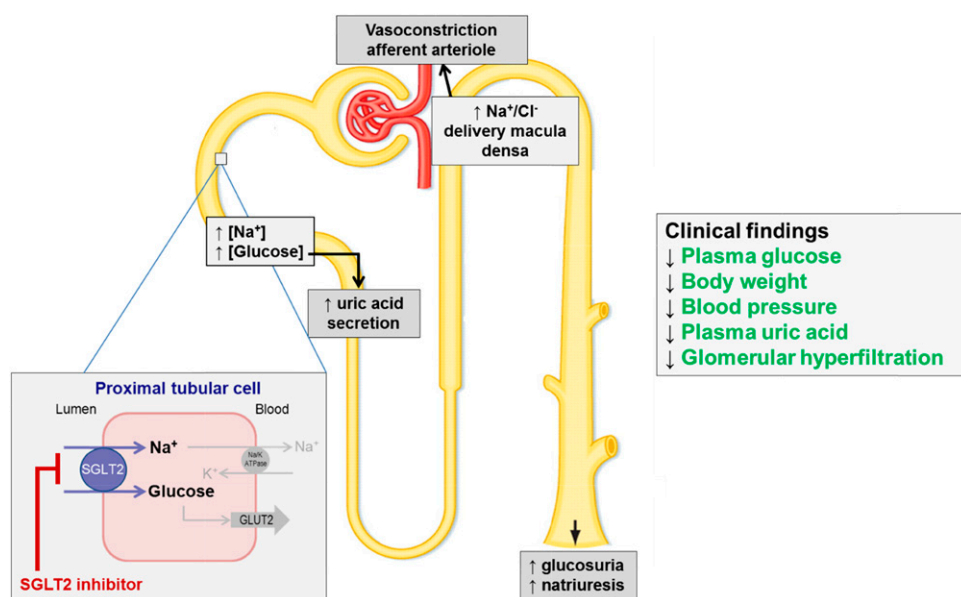
Created with data from the supplemental appendix of the Randomized, Placebo-Controlled Cardiovascular Outcome Trial of Empagliflozin (EMPA-REG OUTCOME) (5,6). At baseline, the study population had an average eGFR of approximately 74 ml/min per 1.73 m<sup>2</sup>. 95% CI, 95% confidence interval; MACE, major adverse cardiovascular event; CV, cardiovascular; MI, myocardial infarction; DKD, diabetic kidney disease.

<sup>a</sup>Accompanied by eGFR ≤ 45 ml/min per 1.73 m<sup>2</sup>.

compared with placebo and 4.45 and 2.01 mmHg, respectively, compared with other glucose-lowering agents without a potentially harmful increase in heart rate (14). However, because patients in the EMPA-REG OUTCOME Trial were well controlled at baseline (approximately 135/76 mmHg), the modest BP reductions achieved with empagliflozin do not seem sufficient to fully explain improved renal and cardiovascular outcome, especially because the Action to Control Cardiovascular Risk in Diabetes (ACCORD) Trial did not show significant benefit of strict systolic BP control (<120 versus <140 mmHg) (29).

The mechanisms by which SGLT2 inhibitors reduce BP remain incompletely understood, although several have

been proposed. First, the glycosuria-accompanied osmotic diuresis, resulting in excess urine output by about 200–600 ml/d, may reduce BP by decreasing intravascular volume. In line with this hypothesis, dapagliflozin reduced <sup>125</sup>I-albumin-measured plasma volume by 7.3% and increased hematocrit 2.2% after 12 weeks (25). Also, the empagliflozin-induced systolic BP reduction of approximately 4 mmHg was paralleled by a 5% increase in hematocrit after a median follow-up of 3.1 years, indicating a sustained effect on volume status (6). Second, because SGLT2 inhibitors also decrease sodium reabsorption in the proximal tubule, potentially by inhibiting the sodium/hydrogen exchanging channel isoform 3 (30), these agents can be regarded as proximal diuretic.



**Figure 2.** | The SGLT2 inhibitors affect multiple sites in the diabetic kidney. This figure summarizes the effect that SGLT2 inhibition has on an individual nephron, which in turn, improves different renal risk factors in type 2 diabetes. ATPase, adenosine triphosphatase; GLUT2, glucose transporter 2.

Illustratively, dapagliflozin in RAS inhibitor–treated patients with T2D reduced placebo-corrected seated systolic BP less effectively in patients who were additionally using thiazide diuretics (−2.38 mmHg) compared with  $\beta$ -blockers (−5.76 mmHg) or calcium channel blockers (−5.13 mmHg) (31). Assuming that drugs with a similar mode of action have less combined efficacy, this suggests that inhibiting sodium reuptake contributes to the BP-lowering effect of SGLT2 inhibitors (31). Natriuresis is dose dependently induced by dapagliflozin during the first 24 hours in healthy volunteers but returns to baseline after 13 days of intervention (32), probably due to compensatory sodium uptake in the tubule, which is similarly observed with thiazide treatment.

Interestingly, the antihypertensive effect of SGLT2 inhibitors has been shown to be independent of GFR, indicating that other factors than volume depletion also contribute (16,17). These may include upregulation of angiotensin 1–7 (33) and reductions in SUA (see below), arterial stiffness, body weight, oxidative stress, inflammation, salt storage in the glycocalyx, and sympathetic nervous system tone (34–36).

### Lipid Metabolism

Although lowering LDL cholesterol is widely used to reduce the risk for CVD in T2D (2), data concerning the renoprotective effect of LDL cholesterol lowering are conflicting (1). Modest increases in plasma LDL (1.5%–6.3%) and HDL (5.5%–9.2%) cholesterol concentrations (with no change in HDL-to-LDL ratio) and reductions in triglyceride levels (1.0%–9.4%) have been consistently observed with different SGLT2 inhibitors in clinical T2D trials (36). The improvement in triglyceride-HDL balance may be related to weight loss and improved insulin sensitivity, whereas the rise in LDL could be explained by the switch in energy metabolism from carbohydrate to lipid utilization (19). However, the precise etiology of the LDL cholesterol increase remains unknown, although it could be speculated that the clinical relevance is perhaps small given that it was accompanied by cardiovascular benefit in the EMPA-REG OUTCOME Trial.

### SUA Reduction

The kidney is responsible for approximately 70% of uric acid elimination. Because insulin resistance and hyperinsulinemia reduce renal excretion of uric acid, hyperuricemia is frequently observed in T2D (37). Accumulating evidence indicates that increased SUA levels contribute to the development of renal disease and CVD (37). Agents that lower SUA through inhibition of the enzyme xanthine oxidase (*e.g.*, allopurinol) may improve hypertension and reduce GFR decline, but these effects are still being investigated in humans, and it is unclear whether they are mediated by SUA lowering *per se* (37).

By increasing glucose concentrations in the filtrate, SGLT2 inhibition is proposed to cause glucose transporter 9 isoform 2, which is located more distally in the proximal tubule, to excrete more uric acid in exchange for glucose reuptake and also, lead to reduced uric acid reabsorption in the collecting duct (38). Where thiazide and loop diuretics reduce uric acid excretion, causing SUA levels to rise, SGLT2 inhibitors have consistently been shown to reduce SUA in T2D by 0.3–0.9 mg/dl (6,39,40). Indeed, the BP- and

SUA-lowering efficacies of dapagliflozin are less when combined with thiazide diuretic treatment compared with other antihypertensives (31). However, in the EMPA-REG OUTCOME Trial, small SUA reductions alone unlikely explain the observed renal and cardiovascular benefits.

### Renal Hemodynamic Effects and Albuminuria

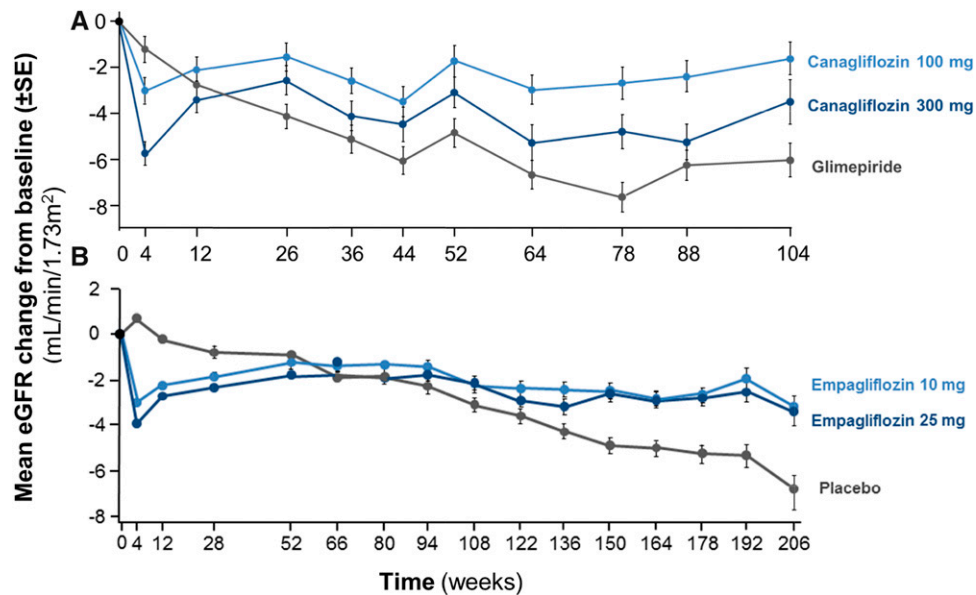
Glomerular hyperfiltration, which is closely related to increased intraglomerular pressure, is a detrimental process in the diabetic kidney that occurs on the whole-kidney or single-nephron level, and it is caused by a complex interplay of diabetes-induced structural and (hemo)dynamic changes (41). Through inducing barotrauma and shear stress, it promotes albuminuria and likely contributes to the development and progression of DKD (42).

In addition to lowering systemic BP, RAS blockers also favorably affect intraglomerular pressure by reducing efferent arteriolar tone. This leads to an initial rise in serum creatinine that, up to 30%, is strongly associated with long-term renoprotection (43). Similarly, SGLT2 inhibitors induce a rapid eGFR decline during the first weeks of treatment, after which eGFR slightly increases toward baseline and then, stabilizes. Because renal function decreases in the natural course of DKD, this eGFR trajectory indicates that SGLT2 inhibitors provide long-term renoprotection compared with placebo (5) and glimepiride (Figure 3) (44). Moreover, SGLT2 inhibition also reduces albuminuria, which not only may be a marker of nephropathy but also, is speculated to directly confer renal damage (1). In hypertensive patients with T2D and normal renal function and albuminuria (75% microalbuminuria), dapagliflozin reduced albuminuria by 33% compared with placebo (45). Also, empagliflozin reduced the progression to macroalbuminuria by 38%, whereas 80% of the population was using RAS blockers at baseline (5).

The presumed reduction in (single-nephron) hyperfiltration and associated albuminuria with SGLT2 inhibitors (1) could be explained by increased sodium delivery at the macula densa and subsequent activation of tubuloglomerular feedback (30), which increases afferent arteriolar tone and may, in turn, reduce intraglomerular pressure. In accordance, an elegant trial in 40 patients with type 1 diabetes (T1D) showed that 8 weeks of empagliflozin treatment in hyperfiltering patients normalized inulin-measured GFR during clamped euglycemia ( $GFR=172\pm 23-139\pm 25$  ml/min per 1.73 m<sup>2</sup>). This was accompanied by an increase in fractional sodium excretion, and these changes did not occur in normofiltering patients (46,47). A subsequent *post hoc* analysis confirmed that the amelioration of hyperfiltration was likely caused by a reduction in intraglomerular pressure as a consequence of increased afferent arteriolar tone (47). However, because intraglomerular pressure cannot be directly measured in humans, it has to be estimated by using variables, such as GFR, BP, and renal blood flow, using the Gomez equations (48).

### Safety

SGLT2 inhibitors are well tolerated and do not seem to increase hypoglycemia risk (21). The adverse effects that have been reported, like genital/urinary tract infections (UTIs) and ketosis and volume depletion in the presence of



**Figure 3. | SGLT2 inhibitors induce stabilization of eGFR trajectory when compared to SU or placebo.** This figure is on the basis of data from long-term follow-up of (A) the efficacy and safety of canagliflozin versus glimepiride in patients with type 2 diabetes inadequately controlled with metformin (CANTATA-SU) Trial (44) and (B) the Randomized, placebo-controlled cardiovascular outcome trial of empagliflozin (EMPA-REG OUTCOME) Trial (5). A shows that the initial eGFR drop after 4 weeks of treatment, seen with both doses of canagliflozin, prevents long-term eGFR decline compared with glimepiride. The same effect is seen in B, where empagliflozin is compared with placebo. SGLT2 inhibition, thus, prevents deterioration of renal function, which often occurs in type 2 diabetes over time.

predisposing factors, have also been seen in patients with familial renal glycosuria and have generally been mild (12). Currently, there are no data available on SGLT2 inhibitors in patients with diabetes and an eGFR < 30 mL/min per 1.73 m<sup>2</sup>, in whom glucose-lowering efficacy is less, and safety issues, like electrolyte disturbances and acute renal failure, could be expected more frequently in this population.

The most commonly observed adverse effects of SGLT2 inhibitors are genital infections and UTIs. The RRs for genital infections (candida) were 4.75 in regulatory submissions (95% CI, 4.00 to 5.63) and 2.88 in scientific reports (95% CI, 4.48 to 3.34), which were both assessed in a 2016 meta-analysis, and they are more pronounced in women (19). The reported RRs of UTIs were 1.15 in regulatory submissions (95% CI, 1.06 to 1.26) and 1.02 in scientific reports (95% CI, 0.95 to 1.10) (14,21). Empagliflozin did not increase the RRs for UTIs in the EMPA-REG OUTCOME Trial and importantly, complicated UTIs (6).

An increased risk of hypovolemia has been observed with the use of SGLT2 inhibitors in T2D, especially in older patients or those treated with diuretics, with RRs of 1.53 in regulatory submissions (95% CI, 1.27 to 1.83) and 1.16 in other eligible papers (95% CI, 0.98 to 1.38) (21). However, a meta-analysis of dapagliflozin trials did not find an increased risk for acute renal toxicity or deterioration of renal function (49), and empagliflozin has even been found to reduce this risk (6), which confirms the findings in familial renal glycosuria (12). No relevant electrolyte disorders have been reported in the EMPA-REG OUTCOME Trial (6), and a dedicated analysis only found mild hypokalemia to be more common with dapagliflozin, whereas the risk for hyperkalemia and severe hypokalemia was not increased (50).

Other potential adverse effects of SGLT2 inhibition are bone fractures. No increased fracture risk was found in a major meta-analysis from 2016 (21), but in a trial with patients with T2D and moderate renal impairment, 9.4% of patients experienced a bone fracture after 104 weeks of 10 mg dapagliflozin treatment, whereas no fractures occurred in the placebo group (16). It has been hypothesized that increased sodium concentrations in the tubule drive cotransport of sodium and phosphate, leading to increased serum phosphate levels, as has been observed (51), which in turn, increase PTH secretion and FGF23 secretion by osteocytes. Together with the fact that SGLT2 inhibition may decrease 1,25-dihydroxyvitamin D, this may negatively affect bone health (52). The evidence for this hypothesis is, however, brittle, and data are conflicting. A dedicated randomized, placebo-controlled trial in patients with T2D inadequately controlled with metformin monotherapy found no changes in serum calcium, 25-hydroxy vitamin D, parathyroid hormone, markers of bone formation/resorption, bone mineral density, or fractures during 50 weeks of dapagliflozin treatment (53).

Recent reports linked SGLT2 inhibitors to the development of (euglycemic) diabetic ketoacidosis (DKA). The DKA risk is evident in T1D, where 4.3% and 6.0% of patients who received canagliflozin treatments of 100 and 300 mg, respectively, developed serious DKA that required hospitalization, whereas no ketone-related events occurred in the placebo group during an 18-week randomized, controlled trial including 351 patients with T1D (54). However, it is unlikely that SGLT2 inhibition-related DKA is a major safety concern in T2D. As such, (preliminary) analyses from major cardiovascular safety trials did not show an increased risk for DKA (6,55). Plausible mechanisms through which SGLT2

**Table 4. Ongoing randomized outcome trials with sodium-glucose cotransporter type 2 inhibitors in type 2 diabetes (updated on June 7, 2016)**

Agent and Trial Name (Clinicaltrials.gov)	N	Key Inclusion Criteria	Main CV End Points	Main Renal End Points	Study Start Date	Estimated Study Completion Date	Expected Follow-Up, yr
<b>Canagliflozin</b> CANVAS (NCT01032629) CANVAS-R (NCT01989754)	4330 5820	Age >30 yr, HbA1c=7.0%–10.5%, high CV risk or history of CVD Age >30 yr, HbA1c=7.0%–10.5%, high CV risk or history of CVD	Primary: MACE (CV death, nonfatal MI, nonfatal stroke) Secondary: MACE (CV death, nonfatal MI, nonfatal stroke)	Secondary: Albuminuria progression Primary: Albuminuria progression; secondary: albuminuria regression, change in eGFR, UACR at last on-treatment visit	12/2009 01/2014	02/2017 01/2017	Up to 8 3
<b>CRENDENCE</b> (NCT02065791)	4200	Age >30 yr, HbA1c=6.5%–12.0%, eGFR=30–90 ml/min, UACR=300–5000 mg/g, ACE-i or ARB use	Secondary: CV death, nonfatal MI, nonfatal stroke, hospitalized HF, hospitalized unstable angina	Primary: Composite renal end point (ESRD, doubling of SCr, renal or CV death)	02/2014	02/2019	5.5
<b>Dapagliflozin</b> DECLARE-TIMI 58 (NCT01730534)	17,276	Age ≥40 yr, HbA1c not specified, high CV risk	Primary: CV death, MI or ischemic stroke; secondary: CV death, MI, ischemic stroke, hospitalized HF, hospitalized unstable angina, hospitalized for any revascularization	Not specified	04/2013	04/2019	Up to 6
<b>Ertugliflozin</b> VERTIS (NCT01986881)	3900	Age ≥40 yr, HbA1c=7.0%–10.5%, evidence or history of atherosclerosis	Primary: CV death, nonfatal MI, nonfatal stroke; secondary: hospitalized unstable angina	Not specified	11/2013	06/2020	Up to 6.3

CV, cardiovascular; CANVAS, Canagliflozin Cardiovascular Assessment Study; HbA1c, hemoglobin A1c; CVD, cardiovascular disease; MACE, major adverse cardiovascular event; MI, myocardial infarction; CANVAS-R, Canagliflozin Cardiovascular Assessment Study–Renal; UACR, urinary albumin-to-creatinine ratio; CRENDENCE, Canagliflozin and Renal Events in Diabetes with Established Nephropathy Clinical Evaluation; ACE-i, angiotensin-converting enzyme inhibitor; ARB, angiotensin receptor blocker; HF, heart failure; SCr, serum creatinine; DECLARE-TIMI58, Dapagliflozin Effect on Cardiovascular Events; VERTIS, Cardiovascular Outcomes Following Ertugliflozin Treatment in Type 2 Diabetes Mellitus Participants with Vascular Disease, The VERTIS CV Study.



inhibition could increase this risk include a reduction in (exogenous) insulin levels, increased glucagon levels, and volume depletion, which lead to decreased glucose oxidation, increased fat oxidation, and thus, stimulation of ketone body formation (19) on top of increased renal ketone body reabsorption (56).

Uncontrolled preregistration trials suggested that dapagliflozin might increase the incidence of bladder and breast cancers, although the former could be a result of detection bias due to routine urine sampling. Although long-term data are still needed to draw definitive conclusions, pooled data from a large number of clinical trials recently suggested that SGLT2 inhibition may lower the overall cancer risk in T2D (21).

Lastly, the EMA and the FDA recently issued a review on an increase in lower-limb amputations (three versus six events per 1000 patients), mostly affecting toes, in the ongoing placebo-controlled canagliflozin cardiovascular outcome trial Canagliflozin Cardiovascular Assessment Study, whereas a non-significant increase in the number of amputations occurred in the renal Canagliflozin Cardiovascular Assessment Study–Renal (CANVAS-R), in which patients with T2D have now been followed for an average of 9 months. Although no increase in such amputations was seen in 12 other completed clinical trials with canagliflozin, this potential safety issue will be closely evaluated in the near future.

### Future Perspective

Dedicated outcome trials with predefined renal end points will need to confirm the renal benefit found in the EMPA-REG OUTCOME Trial in patients with T2D. Currently, the CANVAS-R and the Canagliflozin and Renal Events in Diabetes with Established Nephropathy Clinical Evaluation Study are assessing the effect of long-term canagliflozin treatment in high-CVD risk patients with T2D on renal outcome and expected to report in 2017 and 2019, respectively. If renoprotection by SGLT2 inhibitors is confirmed in a population with eGFR >30 ml/min per 1.73 m<sup>2</sup>, a next step could be to assess safety and the potential to improve renal outcome in patients with more advanced DKD, because some beneficial effects do not seem to be related to GFR. The results of ongoing large-sized safety trials with different SGLT2 inhibitors (Table 4) are also eagerly awaited to confirm cardiovascular benefit, assess potentially increased stroke risk, and clarify whether the benefits in the EMPA-REG OUTCOME Trial are drug specific or may be regarded as a class effect. Furthermore, it is important to know whether these findings can be translated to patients without established CVD, which will be assessed in the Dapagliflozin Effect on Cardiovascular Events Study, or whether SGLT2 inhibition could provide renal benefit in patients with CKD not related to diabetes.

Given the insulin-independent mechanism of action of SGLT2 inhibitors, these agents are currently under investigation as an adjunct to insulin therapy to improve glycemic control in T1D. Also, plasma glucose, BP, and body weight could be synergistically lowered by combining SGLT2 inhibition with glucagon-like peptide-1 receptor agonists (57), which suppress glucagon secretion and reduce appetite, and this combination is currently being investigated.

Furthermore, compounds that partially inhibit SGLT1 in addition to complete SGLT2 inhibition are being developed to increase the effect size of specific SGLT2 inhibitors without causing the (intolerable) gastrointestinal side effects of specific SGLT1 inhibitors. Lastly, the beneficial pleiotropic effects of SGLT2 inhibitors could also be exploited to prevent or delay the onset of T2D and treat heart failure, hypertension, obesity, and CKD in patients without diabetes.

### Conclusion

Despite the intensified multifactorial treatment in T2D, traditional risk factors are usually inadequately controlled in daily practice, and DKD as well as CVD remain common complications that have a major effect on global health care. SGLT2 inhibitors are novel antihyperglycemic drugs that effectively reduce glucose by stimulating urinary glucose excretion, while simultaneously improving multiple other risk factors in a glucose-independent manner. Collectively, these effects resulted in a remarkable improvement of renal and cardiovascular outcomes. Ongoing outcome trials and future mechanistic studies will have to confirm these findings, elucidate the mechanisms through which SGLT2 inhibitors improve outcome, and determine their place in the glucose-lowering armamentarium to optimally minimize the burden of the expanding diabetes epidemic.

### Search Strategy

We searched Medline, PubMed, Google Scholar, and the Cochrane library for English language abstracts and full-text articles published before June of 2016. The search for this review has mainly focused on clinical studies (cohort studies; randomized, controlled trials; and meta-analyses of randomized, controlled trials). The keywords used included “SGLT2 inhibitor,” “sodium-glucose cotransporter-2 inhibitor,” “canagliflozin,” “empagliflozin,” “dapagliflozin,” “sotagliflozin,” “ertugliflozin,” “ipragliflozin,” “tofogliflozin,” “luseogliflozin,” “Remogliflozin etabonate,” “Henagliflozin,” “diabetic kidney disease,” “diabetic nephropathy,” “renoprotection,” “cardiovascular disease,” “diabetes” “clinical management.” These keywords were used as single search terms and in combinations. We also searched the reference lists of original articles, narrative reviews, clinical guidelines, and previous systematic reviews and meta-analyses for further relevant material.

### Disclosures

Through M.H.H.K., the VU University Medical Center received research grants from AstraZeneca (Cambridge, UK), Boehringer Ingelheim (Ingelheim, Germany), Novo Nordisk (Bagsvaerd, Denmark), and Sanofi (Gentilly, France). M.N. has received an unrestricted research grant from AstraZeneca and lecture fees from AstraZeneca, Eli Lilly (Indianapolis, IN), Sanofi, MSD (Whitehouse Station, NJ), Danone (Paris, France), and Johnson & Johnson (New Brunswick, NJ). The other authors declare no competing interests.

### References

1. Musket MHA, Tonneijck L, Smits MM, Kramer MHH, Heerspink HJL, van Raalte DH: Pleiotropic effects of type 2 diabetes management strategies on renal risk factors. *Lancet Diabetes Endocrinol* 3: 367–381, 2015

2. American Diabetes Association: Standards of medical care in diabetes—2016. *Diabetes Care* 39[Suppl 1]: S1–S109, 2016
3. Afkarian M, Sachs MC, Kestenbaum B, Hirsch IB, Tuttle KR, Himmelfarb J, de Boer IH: Kidney disease and increased mortality risk in type 2 diabetes. *J Am Soc Nephrol* 24: 302–308, 2013
4. Vazquez-Benitez G, Desai JR, Xu S, Goodrich GK, Schroeder EB, Nichols GA, Segal J, Butler MG, Karter AJ, Steiner JF, Newton KM, Morales LS, Pathak RD, Thomas A, Reynolds K, Kirchner HL, Waitzfelder B, Elston Lafata J, Adibhatla R, Xu Z, O'Connor PJ: Preventable major cardiovascular events associated with uncontrolled glucose, blood pressure, and lipids and active smoking in adults with diabetes with and without cardiovascular disease: A contemporary analysis. *Diabetes Care* 38: 905–912, 2015
5. Wanner C, Inzucchi SE, Lachin JM, Fitchett D, von Eynatten M, Matthews M, Johansen OE, Woerle HJ, Broedl UC, Zinman B; EMPA-REG OUTCOME Investigators: Empagliflozin and progression of kidney disease in type 2 diabetes. *N Engl J Med* 375: 323–334, 2016
6. Zinman B, Wanner C, Lachin JM, Fitchett D, Bluhmki E, Hantel S, Matthews M, Devins T, Johansen OE, Woerle HJ, Broedl UC, Inzucchi SE; EMPA-REG OUTCOME Investigators: Empagliflozin, cardiovascular outcomes, and mortality in Type 2 diabetes. *N Engl J Med* 373: 2117–2128, 2015
7. Heerspink HJL, Perkins BA, Fitchett DH, Husain M, Cherney DZL: Sodium glucose cotransporter 2 inhibitors in the treatment of diabetes mellitus: Cardiovascular and kidney effects, potential mechanisms, and clinical applications. *Circulation* 134: 752–772, 2016
8. Wilding JPH: The role of the kidneys in glucose homeostasis in type 2 diabetes: Clinical implications and therapeutic significance through sodium glucose co-transporter 2 inhibitors. *Metabolism* 63: 1228–1237, 2014
9. Rieg T, Masuda T, Gerasimova M, Mayoux E, Platt K, Powell DR, Thomson SC, Koepsell H, Vallon V: Increase in SGLT1-mediated transport explains renal glucose reabsorption during genetic and pharmacological SGLT2 inhibition in euglycemia. *Am J Physiol Renal Physiol* 306: F188–F193, 2014
10. DeFronzo RA, Hompesch M, Kasichayanula S, Liu X, Hong Y, Pfister M, Morrow LA, Leslie BR, Boulton DW, Ching A, LaCreta FP, Griffen SC: Characterization of renal glucose reabsorption in response to dapagliflozin in healthy subjects and subjects with type 2 diabetes. *Diabetes Care* 36: 3169–3176, 2013
11. Rahmoune H, Thompson PW, Ward JM, Smith CD, Hong G, Brown J: Glucose transporters in human renal proximal tubular cells isolated from the urine of patients with non-insulin-dependent diabetes. *Diabetes* 54: 3427–3434, 2005
12. Santer R, Calado J: Familial renal glucosuria and SGLT2: From a mendelian trait to a therapeutic target. *Clin J Am Soc Nephrol* 5: 133–141, 2010
13. Chao EC, Henry RR: SGLT2 inhibition—a novel strategy for diabetes treatment. *Nat Rev Drug Discov* 9: 551–559, 2010
14. Vasilakou D, Karagiannis T, Athanasiadou E, Mainou M, Liakos A, Bekiari E, Sarigianni M, Matthews DR, Tsapas A: Sodium-glucose cotransporter 2 inhibitors for type 2 diabetes: A systematic review and meta-analysis. *Ann Intern Med* 159: 262–274, 2013
15. Ferrannini E, Veltkamp SA, Smulders RA, Kadokura T: Renal glucose handling: Impact of chronic kidney disease and sodium-glucose cotransporter 2 inhibition in patients with type 2 diabetes. *Diabetes Care* 36: 1260–1265, 2013
16. Kohan DE, Fioretto P, Tang W, List JF: Long-term study of patients with type 2 diabetes and moderate renal impairment shows that dapagliflozin reduces weight and blood pressure but does not improve glycemic control. *Kidney Int* 85: 962–971, 2014
17. Yale J-F, Bakris G, Cariou B, Yue D, David-Neto E, Xi L, Figueroa K, Wajs E, Usiskin K, Meininger G: Efficacy and safety of canagliflozin in subjects with type 2 diabetes and chronic kidney disease. *Diabetes Obes Metab* 15: 463–473, 2013
18. Barnett AH, Mithal A, Manassie J, Jones R, Rattunde H, Woerle HJ, Broedl UC: Efficacy and safety of empagliflozin added to existing antidiabetes treatment in patients with type 2 diabetes and chronic kidney disease: A randomised, double-blind, placebo-controlled trial. *Lancet Diabetes Endocrinol*. 2: 369–384, 2014
19. Cefalu WT: Paradoxical insights into whole body metabolic adaptations following SGLT2 inhibition. *J Clin Invest* 124: 485–487, 2014
20. Available at: <http://www.fda.gov/AdvisoryCommittees/CommitteesMeetingMaterials/Drugs/EndocrinologicandMetabolic-DrugsAdvisoryCommittee/ucm491062.htm>. Accessed August 10, 2016
21. Wu JHY, Foote C, Blomster J, Toyama T, Perkovic V, Sundström J, Neal B: Effects of sodium-glucose cotransporter-2 inhibitors on cardiovascular events, death, and major safety outcomes in adults with type 2 diabetes: A systematic review and meta-analysis. *Lancet Diabetes Endocrinol* 4: 411–419, 2016
22. Marso SP, Daniels GH, Brown-Frandsen K, Kristensen P, Mann JFE, Nauck MA, Nissen SE, Pocock S, Poulter NR, Ravn LS, Steinberg WM, Stockner M, Zinman B, Bergenstal RM, Buse JB; LEADER Steering Committee; LEADER Trial Investigators: Liraglutide and cardiovascular outcomes in Type 2 diabetes. *N Engl J Med* 375: 311–322, 2016
23. Wing RR, Bolin P, Brancati FL, Bray GA, Clark JM, Coday M, Crow RS, Curtis JM, Egan CM, Espeland MA, Evans M, Foreyt JP, Ghazarian S, Gregg EW, Harrison B, Hazuda HP, Hill JO, Horton ES, Hubbard VS, Jakicic JM, Jeffery RW, Johnson KC, Kahn SE, Kitabchi AE, Knowler WC, Lewis CE, Maschak-Carey BJ, Montez MG, Murillo A, Nathan DM, Patricio J, Peters A, Pi-Sunyer X, Pownall H, Reboussin D, Regensteiner JG, Rickman AD, Ryan DH, Safford M, Wadden TA, Wagenknecht LE, West DS, Williamson DF, Yanovski SZ; Look AHEAD Research Group: Cardiovascular effects of intensive lifestyle intervention in type 2 diabetes. *N Engl J Med* 369: 145–154, 2013
24. Look AHEAD Research Group: Effect of a long-term behavioural weight loss intervention on nephropathy in overweight or obese adults with type 2 diabetes: A secondary analysis of the Look AHEAD randomised clinical trial. *Lancet Diabetes Endocrinol* 2: 801–809, 2014
25. Lambers Heerspink HJ, de Zeeuw D, Wie L, Leslie B, List J: Dapagliflozin a glucose-regulating drug with diuretic properties in subjects with type 2 diabetes. *Diabetes Obes Metab* 15: 853–862, 2013
26. Bolinder J, Ljunggren Ö, Johansson L, Wilding J, Langkilde AM, Sjöström CD, Sugg J, Parikh S: Dapagliflozin maintains glycaemic control while reducing weight and body fat mass over 2 years in patients with type 2 diabetes mellitus inadequately controlled on metformin. *Diabetes Obes Metab* 16: 159–169, 2014
27. Ferrannini G, Hach T, Crowe S, Sanghvi A, Hall KD, Ferrannini E: Energy balance after sodium-glucose cotransporter 2 inhibition. *Diabetes Care* 38: 1730–1735, 2015
28. Devenny JJ, Godonis HE, Harvey SJ, Rooney S, Cullen MJ, Pellemounter MA: Weight loss induced by chronic dapagliflozin treatment is attenuated by compensatory hyperphagia in diet-induced obese (DIO) rats. *Obesity (Silver Spring)* 20: 1645–1652, 2012
29. Cushman WC, Evans GW, Byington RP, Goff DC Jr., Grimm RH Jr., Cutler JA, Simons-Morton DG, Basile JN, Corson MA, Probstfield JL, Katz L, Peterson KA, Friedewald WT, Buse JB, Bigger JT, Gerstein HC, Ismail-Beigi F; ACCORD Study Group: Effects of intensive blood-pressure control in type 2 diabetes mellitus. *N Engl J Med* 362: 1575–1585, 2010
30. Pessoa TD, Campos LCG, Carraro-Lacroix L, Girardi ACC, Malnic G: Functional role of glucose metabolism, osmotic stress, and sodium-glucose cotransporter isoform-mediated transport on Na<sup>+</sup>/H<sup>+</sup> exchanger isoform 3 activity in the renal proximal tubule. *J Am Soc Nephrol* 25: 2028–2039, 2014
31. Weber MA, Mansfield TA, Cain VA, Iqbal N, Parikh S, Ptaszynska A: Blood pressure and glycaemic effects of dapagliflozin versus placebo in patients with type 2 diabetes on combination antihypertensive therapy: A randomised, double-blind, placebo-controlled, phase 3 study. *Lancet Diabetes Endocrinol* 4: 211–220, 2016
32. Komoroski B, Vachharajani N, Feng Y, Li L, Kornhauser D, Pfister M: Dapagliflozin, a novel, selective SGLT2 inhibitor, improved glycemic control over 2 weeks in patients with type 2 diabetes mellitus. *Clin Pharmacol Ther* 85: 513–519, 2009
33. Muskiet MHA, van Raalte DH, van Bommel E, Smits MM, Tonneijck L: Understanding EMPA-REG OUTCOME. *Lancet Diabetes Endocrinol*. 3: 928–929, 2015
34. Muskiet MH, van Bommel EJ, van Raalte DH: Antihypertensive effects of SGLT2 inhibitors in type 2 diabetes. *Lancet Diabetes Endocrinol* 4: 188–189, 2015
35. Maliha G, Townsend RR: SGLT2 inhibitors: Their potential reduction in blood pressure. *J Am Soc Hypertens* 9: 48–53, 2015

36. Inzucchi SE, Zinman B, Wanner C, Ferrari R, Fitchett D, Hantel S, Espadero R-M, Woerle H-J, Broedl UC, Johansen OE: SGLT-2 inhibitors and cardiovascular risk: Proposed pathways and review of ongoing outcome trials. *Diab Vasc Dis Res* 12: 90–100, 2015
37. Richette P, Perez-Ruiz F, Doherty M, Jansen TL, Nuki G, Pascual E, Punzi L, So AK, Bardin T: Improving cardiovascular and renal outcomes in gout: What should we target? *Nat Rev Rheumatol* 10: 654–661, 2014
38. Chino Y, Samukawa Y, Sakai S, Nakai Y, Yamaguchi J, Nakanishi T, Tamai I: SGLT2 inhibitor lowers serum uric acid through alteration of uric acid transport activity in renal tubule by increased glycosuria. *Biopharm Drug Dispos* 35: 391–404, 2014
39. Bailey CJ, Gross JL, Pieters A, Bastien A, List JF: Effect of dapagliflozin in patients with type 2 diabetes who have inadequate glycaemic control with metformin: A randomised, double-blind, placebo-controlled trial. *Lancet* 375: 2223–2233, 2010
40. Rosenstock J, Aggarwal N, Polidori D, Zhao Y, Arbit D, Usiskin K, Capuano G, Canovatchel W; Canagliflozin DIA 2001 Study Group: Dose-ranging effects of canagliflozin, a sodium-glucose cotransporter 2 inhibitor, as add-on to metformin in subjects with type 2 diabetes. *Diabetes Care* 35: 1232–1238, 2012
41. Pollak MR, Quaggin SE, Hoenig MP, Dworkin LD: The glomerulus: The sphere of influence. *Clin J Am Soc Nephrol* 9: 1461–1469, 2014
42. Brenner BM, Lawler EV, Mackenzie HS: The hyperfiltration theory: A paradigm shift in nephrology. *Kidney Int* 49: 1774–1777, 1996
43. Lewis EJ, Hunsicker LG, Clarke WR, Berl T, Pohl MA, Lewis JB, Ritz E, Atkins RC, Rohde R, Raz I; Collaborative Study Group: Renoprotective effect of the angiotensin-receptor antagonist irbesartan in patients with nephropathy due to type 2 diabetes. *N Engl J Med* 345: 851–860, 2001
44. Leiter LA, Yoon K-H, Arias P, Langslet G, Xie J, Balis DA, Millington D, Vercruyse F, Canovatchel W, Meininger G: Canagliflozin provides durable glycaemic improvements and body weight reduction over 104 weeks versus glimepiride in patients with type 2 diabetes on metformin: A randomized, double-blind, phase 3 study. *Diabetes Care* 38: 355–364, 2015
45. Heerspink HJL, Johnsson E, Gause-Nilsson I, Cain VA, Sjöström CD: Dapagliflozin reduces albuminuria in patients with diabetes and hypertension receiving renin-angiotensin blockers. *Diabetes Obes Metab* 18: 590–597, 2016
46. Cherney DZI, Perkins BA, Soleymanlou N, Maione M, Lai V, Lee A, Fagan NM, Woerle HJ, Johansen OE, Broedl UC, von Eynatten M: Renal hemodynamic effect of sodium-glucose cotransporter 2 inhibition in patients with type 1 diabetes mellitus. *Circulation* 129: 587–597, 2014
47. Skrtić M, Yang GK, Perkins BA, Soleymanlou N, Lytvyn Y, von Eynatten M, Woerle HJ, Johansen OE, Broedl UC, Hach T, Silverman M, Cherney DZI: Characterisation of glomerular haemodynamic responses to SGLT2 inhibition in patients with type 1 diabetes and renal hyperfiltration. *Diabetologia* 57: 2599–2602, 2014
48. Gomez DM: Evaluation of renal resistances, with special reference to changes in essential hypertension. *J Clin Invest* 30: 1143–1155, 1951
49. Kohan DE, Fioretto P, Johnsson K, Parikh S, Ptaszynska A, Ying L: The effect of dapagliflozin on renal function in patients with type 2 diabetes. *J Nephrol* 29: 391–400, 2016
50. Yavin Y, Mansfield TA, Ptaszynska A, Johnsson K, Parikh S, Johnsson E: Effect of the SGLT2 inhibitor dapagliflozin on potassium levels in patients with Type 2 diabetes mellitus: A pooled analysis. *Diabetes Ther* 7: 125–137, 2016
51. FDA: Dapagliflozin Background Document for the FDA EMDAC Meeting, 04-11-2013. Available at: <http://www.fda.gov/downloads/drugs/endocrinologicandmetabolicdrugsadvisor-committee/ucm378079.pdf>. Accessed May 31, 2016
52. Taylor SI, Blau JE, Rother KI: Possible adverse effects of SGLT2 inhibitors on bone. *Lancet Diabetes Endocrinol* 3: 8–10, 2015
53. Ljunggren Ö, Bolinder J, Johansson L, Wilding J, Langkilde AM, Sjöström CD, Sugg J, Parikh S: Dapagliflozin has no effect on markers of bone formation and resorption or bone mineral density in patients with inadequately controlled type 2 diabetes mellitus on metformin. *Diabetes Obes Metab* 14: 990–999, 2012
54. Peters AL, Henry RR, Thakkar P, Tong C, Alba M: Diabetic ketoacidosis with canagliflozin, a sodium-glucose cotransporter 2 inhibitor, in patients with Type 1 diabetes. *Diabetes Care* 39: 532–538, 2016
55. Rosenstock J, Ferrannini E: Euglycemic diabetic ketoacidosis: A predictable, detectable, and preventable safety concern with SGLT2 inhibitors. *Diabetes Care* 38: 1638–1642, 2015
56. Taylor SI, Blau JE, Rother KI: SGLT2 inhibitors may predispose to ketoacidosis. *J Clin Endocrinol Metab* 100: 2849–2852, 2015
57. Fulcher G, Matthews DR, Perkovic V, de Zeeuw D, Mahaffey KW, Mathieu C, Woo V, Wysham C, Capuano G, Desai M, Shaw W, Vercruyse F, Meininger G, Neal B; CANVAS trial collaborative group: Efficacy and safety of canagliflozin when used in conjunction with incretin-mimetic therapy in patients with type 2 diabetes. *Diabetes Obes Metab* 18: 82–91, 2016

Published online ahead of print. Publication date available at [www.cjasn.org](http://www.cjasn.org).