



Signals of El Niño Modoki in the tropical tropopause layer and stratosphere

F. Xie¹, J. Li¹, W. Tian², J. Feng¹, and Y. Huo²

¹State Key Laboratory of Numerical Modeling for Atmospheric Sciences and Geophysical Fluid Dynamics, Institute of Atmospheric Physics, Chinese Academy of Sciences, Beijing, China

²Key Laboratory for Semi-Arid Climate Change of the Ministry of Education, College of Atmospheric Sciences, Lanzhou University, China

Correspondence to: J. Li (ljp@lasg.iap.ac.cn)

Received: 24 October 2011 – Published in Atmos. Chem. Phys. Discuss.: 2 February 2012

Revised: 9 May 2012 – Accepted: 31 May 2012 – Published: 15 June 2012

Abstract. The effects of El Niño Modoki events on the tropical tropopause layer (TTL) and on the stratosphere were investigated using European Center for Medium Range Weather Forecasting (ECMWF) reanalysis data, oceanic El Niño indices, and general climate model outputs. El Niño Modoki events tend to depress convective activities in the western and eastern Pacific but enhance convective activities in the central and northern Pacific. Consequently, during El Niño Modoki events, negative water vapor anomalies occur in the western and eastern Pacific upper troposphere, whereas there are positive anomalies in the central and northern Pacific upper troposphere. The spatial patterns of the outgoing longwave radiation (OLR) and upper tropospheric water vapor anomalies exhibit a tripolar form. The empirical orthogonal function (EOF) analysis of the OLR and upper tropospheric water vapor anomalies reveals that canonical El Niño events are associated with the leading mode of the EOF, while El Niño Modoki events correspond to the second mode. The composite analysis based on ERA-interim data indicate that El Niño Modoki events have a reverse effect on middle-high latitudes stratosphere, as compared with the effect of typical El Niño events, i.e., the northern polar vortex is stronger and colder but the southern polar vortex is weaker and warmer during El Niño Modoki events. According to the simulation results, we found that the reverse effect on the middle-high latitudes stratosphere is resulted from a complicated interaction between quasi-biennial oscillation (QBO) signal of east phase and El Niño Modoki signal. This interaction is not a simply linear overlay of QBO signal and El Niño Modoki signal in the stratosphere, it is El Niño Modoki that

leads to different tropospheric zonal wind anomalies with QBO forcing from that caused by typical El Niño, thus, the planetary wave propagation from troposphere to the stratosphere during El Niño Modoki events is different from that during canonical El Niño events. However, when QBO is in its west phase, El Niño Modoki events have the same effect on middle-high latitudes stratosphere as the typical El Niño events. Our simulations also suggest that canonical El Niño and El Niño Modoki activities actually have the same influence on the middle-high latitudes stratosphere when in the absence of QBO forcing.

1 Introduction

The El Niño-Southern Oscillation (ENSO) is an important signal of interannual variability in the atmosphere. It can impact the troposphere by adjustment of convection patterns and can influence the stratosphere through the anomalous propagation and dissipation of ultralong Rossby waves at middle latitudes. The two reversal phases of the ENSO cycle are (1) a “warm” phase (called El Niño), in which an anomalously warm tongue of sea surface water spreads westward from the eastern Pacific Ocean to the middle and western Pacific Ocean; and (2) a “cold” phase (called La Niña), in which a broad anomalously cold tongue of sea surface water appears in this region.

These two phases result in dramatically different patterns of atmospheric convection throughout the tropical atmosphere (Philander, 1990), i.e., the warm phase enhances

convection in the middle and eastern tropical Pacific, but depresses convection in the western tropical Pacific, while the cold phase has the effect of weakening convection in the middle and eastern tropical Pacific but enhancing convection in the western tropical Pacific. These patterns can affect the properties of the TTL, including temperature, wind velocities, and water vapor and ozone concentrations (Chandra et al., 1998; Gettelman et al., 2001; Kiladis et al., 2001; Newell et al., 1996; Randel et al., 2000; Reid and Gage, 1985; Sassi et al., 2004; Yulaeva et al., 1994), which, in turn, can influence stratospheric water vapor concentrations (e.g., Gettelman et al., 2001; Sassi et al., 2004; Scaife et al., 2003). In addition, previous studies have indicated that warm phases of the ENSO can significantly enhance planetary wave activities (Van Loon and Labitzke, 1987; Hamilton, 1993; Camp and Tung, 2007; Garfinkel and Hartmann, 2007; Free and Seidel, 2009; Sassi et al., 2004; Manzini et al., 2006; García-Herrera et al., 2006; Taguchi and Hartmann, 2006), resulting in stronger stratospheric Brewer–Dobson (BD) circulation. Cagnazzo et al. (2009), on the basis of the results of several atmospheric chemistry climate models, and Free and Seidel (2009), on the basis of observations, both reported a warming of the northern polar vortex during strong warm phases of the ENSO, associated with increased ozone anomalies in northern high latitudes.

Using tropical Pacific Ocean sea surface temperatures (SST), the canonical El Niño pattern can be derived from the first mode of an EOF analysis (e.g., Rasmusson and Carpenter, 1982; Trenberth, 1997; Zhang et al., 2009), showing maximum sea surface temperature anomalies (SSTA) in the eastern Pacific (Fig. 1a). However, the second mode of tropical Pacific Ocean SST variability depends on the study period of the data series. For example, EOF analyses performed on tropical Pacific SSTA at time scales close to or greater than 50 yr (e.g., 1948–2007 and 1880–2007) yield a cooling mode in the equatorial Pacific cold tongue (Zhang et al., 2010). However, for the time series from 1979 to 2004, the second mode of the EOF, which accounts for approximately 12 % of the total variance, shows a warm SSTA located in the central tropical Pacific (Ashok et al., 2007). This mode, referred to as El Niño Modoki, corresponds to the third mode of the EOF analysis of long-term SSTA (e.g., 1948–2007 and 1880–2007) over the tropical Pacific (Zhang et al., 2010), which shows negative SSTAs in the eastern and western Pacific, and positive SSTA in the central Pacific (Fig. 1b). Yu and Kao (2007) also noticed there are two different types of ENSO, moreover, Kao and Yu (2009) and Yu et al. (2010) explain the different mechanisms which lead to the different two kinds of El Niño events.

Ashok et al. (2007) found that the evolution of El Niño Modoki events is related to a tripolar pattern of sea level pressure anomalies, and noted the presence of two anomalous Walker circulation cells associated with El Niño Modoki events, versus the single cell that is associated with canonical El Niño events. This configuration of atmospheric cir-

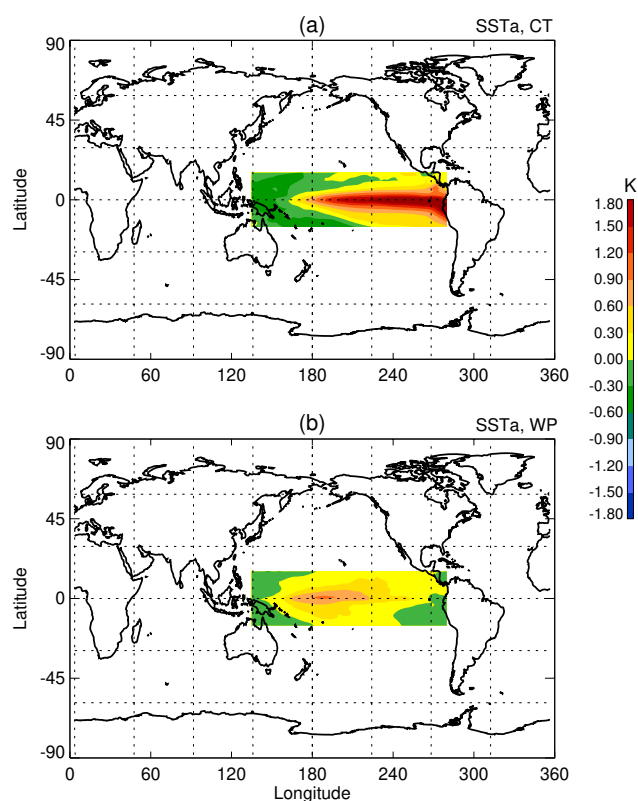


Fig. 1. SSTAs in the tropical Pacific Ocean referred to as canonical El Niño events (a) and El Niño Modoki events (b). The logogram CT on the top right corner of a panel represents the canonical El Niño events. The logogram of WP represents the El Niño Modoki events. CT and WP in the following figures have the same meaning.

culation in El Niño Modoki events appears to influence the troposphere in a different way than that of canonical El Niño events. Weng et al. (2007, 2009) assessed the impact of El Niño Modoki events on the climate of China, Japan, and the United States, during the boreal summer and winter, on the basis of data from three El Niño Modoki events. They found that El Niño Modoki activities influence climate in a different way to that of canonical El Niño activities. Recently, the modulation of SSTA on convection, and the resulting effects of El Niño Modoki events on regional rainfall, have received considerable attention (Taschetto and England, 2009; Cai and Cowan, 2009; Feng and Li, 2011; Zhang et al., 2010). Those studies indicate that the two types of El Niño (canonical El Niño and El Niño Modoki) show contrasting impacts on regional rainfall patterns. On the one hand, both Walker circulation patterns and the effects of convection anomalies caused by El Niño Modoki activities can extend to the TTL. On the other hand, the gradient patterns of SSTA of canonical El Niño and El Niño Modoki events would be associated with distinctly different patterns of propagation and dissipation of ultralong Rossby waves in the mid-latitude stratosphere, which may lead to profoundly different

effects on the stratosphere. Recently, some studies have noted distinct temperature and circulation anomalies in the stratosphere caused by the two types of El Niño activities (Hurwitz et al., 2011a, b; Zubiaurre and Calvo, 2012), although the possible relationships between temperature changes and wave activities or circulation anomalies are deserve further discussed.

The influence of warm vs. cold phases of the ENSO on the atmosphere has been carefully investigated in the past, whereas the atmospheric response to El Niño Modoki events, especially in the TTL and stratosphere, has not to receive sufficient attention. Since the late 1970s El Niño Modoki events are increasing (Ashok and Yamagata, 2009; Yeh et al., 2009). It is necessary to more comprehensive understanding of the effects of El Niño Modoki activities on atmosphere. This study investigates the effects of El Niño Modoki activities on the TTL and stratosphere, and compared those effects with those of canonical El Niño activities. The remainder of the manuscript is organized as follows. Section 2 describes the data used in the study and related numerical simulations. Section 3 discusses how patterns of atmospheric convection, the tropopause temperature, and water vapor changes in the upper troposphere and tropopause, are related to the activities of the two types of El Niño. Section 4 analyzes variations in stratospheric wave activities, and circulation and temperature patterns associated with the two types of El Niño activities. Finally, the conclusions are presented in Sect. 5.

2 Data and simulations

The data used in the present study include outgoing longwave radiation (OLR), tropopause temperature, water vapor concentration, and wind field data. The OLR data from 1979 to 2010 were obtained from <http://www.cdc.noaa.gov/>. The monthly mean European Center for Medium Range Weather Forecasting (ECMWF) reanalysis data (ERA-Interim) from 1979 to 2010 were analyzed mainly for tropopause temperatures, tropospheric water vapor concentrations, and stratospheric wind fields and temperatures. The ERA-Interim data assimilates new model outputs and satellite observations, and provide data at horizontal resolutions of $1.5 \times 1.5^\circ$ and relatively high vertical resolutions (Simmons et al., 2007a, b; Upala et al., 2008). The ERA-Interim data are therefore suitable for diagnosing water vapor concentrations and temperature anomalies in the TTL, and wind fields and temperatures in the stratosphere.

The monthly Nino 3 index (5°N – 5°S , 150 – 90°W), hereafter N3I, and the ENSO Modoki index, hereafter EMI, were used to identify monthly occurrences of canonical El Niño events and El Niño Modoki events, respectively. N3I is defined as the area mean SSTA over the region 5°S – 5°N , 150 – 90°W , and is available at <http://www.cpc.noaa.gov/data/indices/>. Following Ashok et al. (2007), the EMI is defined as follows:

Table 1. Samples of canonical El Niño (left column) and El Niño Modoki (right column) events from 1980 to 2010 analyzed in this paper.

Canonical El Niño	El Niño Modoki
JUL1982–AUG1983	SEP1990–DEC1991
DEC1986–JAN1988	APR1994–JUN1995
MAY1997–MAY1998	JUN2002–APR2003
AGU2006–JAN2007	JUN2004–DEC2004

$$\text{EMI} = [\text{SSTA}]_C - 0.5 \times [\text{SSTA}]_E - 0.5 \times [\text{SSTA}]_W$$

where the subscripted brackets represent the area mean SSTA over the central Pacific region ($[\text{SSTA}]_C$: 10°S – 10°N , 165°E – 140°W), the eastern Pacific region ($[\text{SSTA}]_E$: 15°S – 5°N , 110 – 70°W), and the western Pacific region ($[\text{SSTA}]_W$: 10°S – 20°N , 125 – 145°E). Months with canonical El Niño event were identified by the corresponding N3I values equal to or greater than $+0.5^\circ\text{C}$ in those months. Similarly, months with El Niño Modoki events were identified by the corresponding EMI values equal to or greater than $+0.5^\circ\text{C}$. Several strong and long time continuous El Niño events have been selected for this study (Table 1). The NOAA OLR, and ERA-Interim were divided into two groups on the basis of the N3I and EMI data. Group one contains data records marked with canonical El Niño events. Group two contains data recorders marked with El Niño Modoki events. The canonical El Niño and El Niño Modoki anomalies are calculated using composites of the detrended and deseasonalized time series for canonical El Niño and El Niño Modoki events, respectively.

Our composite results, based on reanalysis data and observations, were also compared with time-slice simulations derived from the Whole Atmosphere Community Climate Model, version 4 (WACCM4 be included in the CESM1.0.4), using forcing of observed canonical El Niño and El Niño Modoki SSTs from the tropical Pacific. The WACCM, developed by the National Center for Atmospheric Research (NCAR), is unable to internally simulate quasi-biennial oscillation (QBO) signals; however, it can rationally simulate atmospheric ENSO signals (Garcia et al., 2007). So far, WACCM4 is the newest model for WACCM. Compared with the old version of WACCM, it has great improvements (<http://www.cesm.ucar.edu/models/cesm1.0/>). WACCM4 has 66 vertical levels extending from the ground to 4.5×10^{-6} hPa (~ 145 km geometric altitude), and the model's vertical resolution is 1.1–1.4 km in the TTL and the lower stratosphere (< 30 km). The time-slice simulations presented in this paper were performed at a resolution of $1.9 \times 2.5^\circ$, with interactive chemistry disabled. The former three runs were conducted with configurations using the same greenhouse gas (GHG) emissions but different SST forcing. The SST used in the control experiment (R1) is observed monthly mean climatology for the time period from 1979 to 2010. In experiment R2, SST is as in R1, except that the tropical Pacific

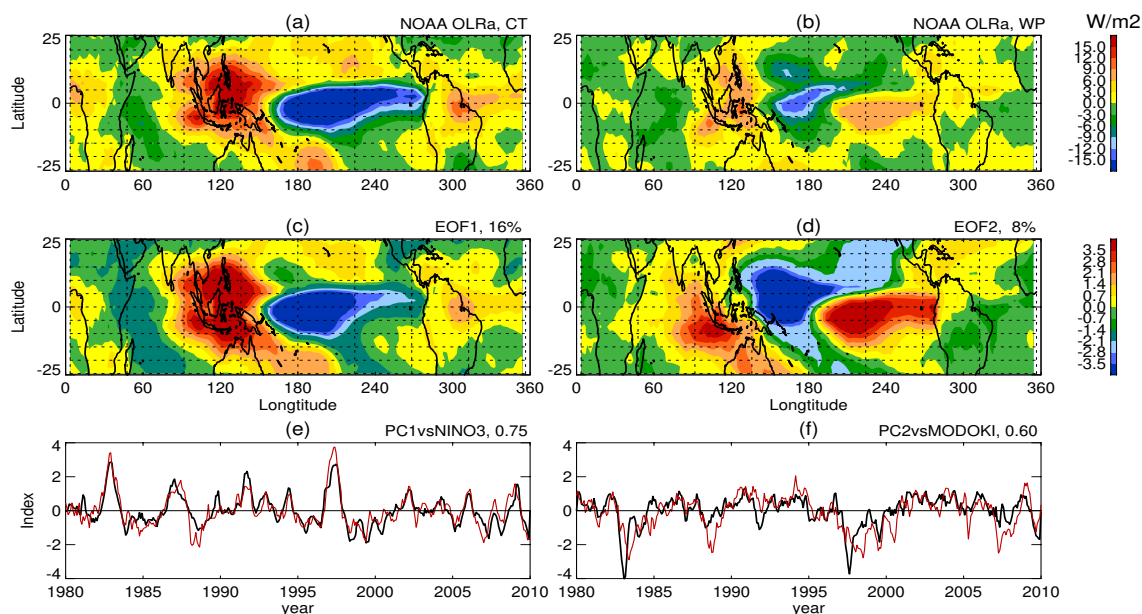


Fig. 2. Composite OLR anomalies for (a) canonical El Niño events, and (b) El Niño Modoki events, based on NOAA data for 1979–2010. Contour interval, $\pm 3 \text{ W m}^{-2}$. (c) and (d) are the leading and second modes of the EOF spatial pattern of OLR anomalies, respectively. Contour interval, ± 0.007 . (e) and (f) are the leading and second modes of PC interannual variability, respectively. The red line in (e) is the N3I; the red line in (f) is the EMI. The values at the top right corners of (e) and (f) are correlation coefficients describing the correlations between the datasets.

SST represents composite of observed SST associated with canonical El Niño conditions, for the period 1979–2010. In experiment R3, the SST is as in R1, but the tropical Pacific SST represents composite of observed SST associated with El Niño Modoki conditions. The observed SST data is from the Meteorological Office, Hadley Centre for Climate Prediction and Research, SST and sea-ice field datasets (Rayner et al., 2006). The averaged differences of SSTs in the tropical Pacific between sensitive experiments and the control experiment (R2–R1 and R3–R1) are similar with the SSTAs in Fig. 1a and b. The fixed GHG values used in the model radiation scheme are based on emissions scenario A2 of the Intergovernmental Panel on Climate Change (IPCC) (WMO, 2003), averaged GHG values for the period 1979–2010. QBO phase signals for 28 months fixed circle are included in WACCM4 as an external forcing for zonal wind. To further examine whether the stratospheric El Niño anomalies are different with and without the QBO in the model, the other three experiments (R4, R5, and R6) are performed to investigate the circulation anomalies in the stratosphere during two kinds of El Niño events in the absence of QBO. The experiments R4, R5 and R6 have the same figuration as the experiment R1, R2 and R3, respectively, except that the experiments R4, R5, and R6 are run without impose a QBO forcing in the model. Six experiments were all ran for 33 yr with the first 3 yr excluded for the model spin-up and only the remaining 30 yr are used for the analysis. The model cli-

matologies are based on the last 30 yr of the model output except when otherwise stated.

3 Anomalies in the TTL associated with the two types of El Niño

Changes in SST cause profound changes in atmospheric convection. In this paper, the magnitude of OLR is used as a proxy for the intensity of convective activity. Figure 2 shows OLR anomalies associated with canonical El Niño and El Niño Modoki events. It is evident that typical El Niño phases have different impacts on convection patterns in different tropical regions, i.e., enhanced convection (negative OLR anomalies) occurs in the middle and eastern Pacific during canonical El Niño events, while reduced convection (positive OLR anomalies) occurs in the western and northern Pacific (Fig. 2a). The spatial patterns and magnitudes of the OLR anomalies exhibited in Fig. 2a are similar to those reported in previous studies (e.g., Philander, 1990; Deser and Wallace, 1990; Yulaeva et al., 1994; Kiladis et al., 2001; Gettelman et al., 2001).

Using regression analysis, Trenberth and Smith (2009) pointed out that the OLR signatures of the two types of El Niño are quite similar. However, it was found that the composite anomalies of convective activities associated with El Niño Modoki events (Fig. 2b) are somewhat different from those associated with canonical El Niño events (Fig. 2a). El Niño Modoki events depress convection in the western

and eastern Pacific but intensify convection in the central and northern Pacific. In addition, the positive and negative anomalies over the middle and western Pacific, respectively, during El Niño Modoki are weaker than those associated with canonical El Niño events. Furthermore, the OLR anomalies show a tripolar form as SSTA during El Niño Modoki events, with patterns that correspond to patterns of rainfall anomalies, as noted by Ashok et al. (2007) and Weng et al. (2009).

The EOF analysis of deseasonalized and detrended monthly mean OLR anomalies, for the period 1979–2010, can effectively isolate El Niño variability. The leading mode, which explains 16% of the variance of EOF spatial patterns, is similar to the canonical El Niño pattern of OLR anomalies (Fig. 2a and c). The interannual variability of the leading mode of EOF time patterns (Principal Component, PC) (Fig. 2e, black line) and the N3I (Fig. 2e, red line) are strongly correlated (linear correlation coefficient, 0.75). This result is in agreement with that of previous studies (Gettelman et al., 2001; Kiladis et al., 2001). Gettelman et al. (2001) noted that the second mode of the EOF analysis of OLR anomalies is also statistically significant, explaining about 8% of the variance of EOF spatial patterns, and maps strongly onto the central and western Pacific. They further note that the second mode is similar to a second ENSO mode (the “Trans-Niño Index”) described by Trenberth and Stepaniak (2001). Figure 2d and f show EOF spatial patterns and interannual variabilities of PC corresponding to the second mode of EOF analysis. The results show that the EOF spatial pattern corresponds to OLR anomalies during El Niño Modoki events (Fig. 2b and d), and the PC mode is strongly correlated with the EMI (Fig. 2f, black and red lines) (linear correlation coefficient, 0.60). This finding indicates that the second mode of the OLR anomalies corresponds with the Modoki pattern, as noted by Gettelman et al. (2001).

The patterns of OLR anomalies of the two types of El Niño can also be obtained from the WACCM4 forced by observed SSTA (Fig. 3). Figure 3a and b show the OLR differences between run R2 and R1 and between run R3 and R1, respectively. The patterns of OLR anomalies generated by the WACCM4 are broadly similar to the composite results of observations (Fig. 2a and b; Fig. 3a and b). However, in the observations, the maximum OLR anomaly that is located over the Maritime Continent migrates to the north Pacific in the model, and in the Indian Ocean, negative anomalies in observed OLR values change to positive anomalies in the model results. The discrepancies between observations and NCAR model outputs have also been noted by Gettelman et al. (2001). Actually, the SST in the Indian Ocean would change when El Niño events occur. Those discrepancies may be because we don't consider the variations of SST over Indian Ocean during El Niño events in our simulations.

In summary, the above analysis shows that El Niño Modoki activities have a significantly different influence on the troposphere than typical El Niño activities do. Separat-

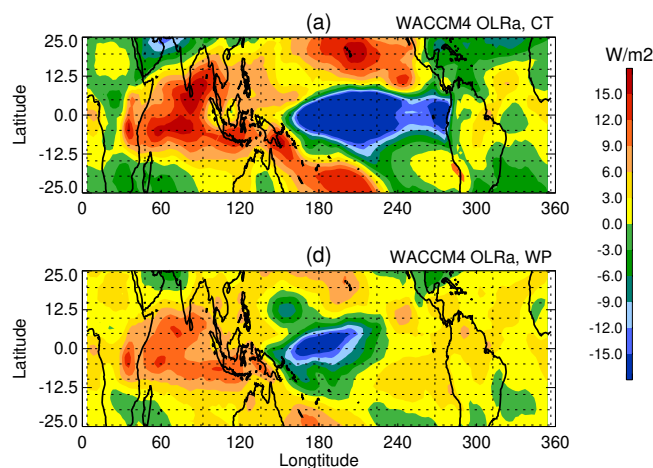


Fig. 3. Averaged OLR anomalies for R2–R1 (a) and R3–R1 (b). Contour interval, $\pm 3 \text{ W m}^{-2}$.

ing the effects of El Niño Modoki activities and canonical El Niño activities is critical for considering the impacts of El Niño activities on the atmosphere.

It is well known that changes in convection patterns can profoundly affect tropical circulation. Variations in convection and circulation patterns resulting from SSTA have been shown to significantly influence tropopause temperatures (Reid and Gage, 1985). These patterns of change can be confirmed at several levels in the TTL. Here, the composite anomalies of 100 hPa temperatures associated with canonical El Niño and El Niño Modoki events are analyzed, based on ERA-Interim data from 1979 to 2010 (Fig. 4). The results indicate cooling in the middle and eastern Pacific at 100 hPa during canonical El Niño events, while in the western Pacific region, where typically referred to as the “cold trap region” (Newell and Gould-Stewart, 1981), the 100 hPa temperature shows a warming exceeding 1.0 K (Fig. 4a). The spatial patterns and magnitudes of the temperature anomalies exhibited in Fig. 4a are in agreement with the results of previous studies (e.g., Randel et al., 2000; Scaife et al., 2003; Xie et al., 2011). Figure 4a shows that 100 hPa temperature signals of canonical El Niño is opposite to that of tropical SST. Previous studies have shown that the sign of the El Niño signal is opposite to that of the tropical lower stratosphere (Reid et al., 1989; Yulaeva et al., 1994). Calvo et al. (2004) suggested that cooling of the tropical lower stratosphere over the eastern Pacific during warm phases of ENSO is related to internal equatorial waves associated with SSTA that force anomalous convection in the troposphere. Although Fig. 2 shows differences in the convection patterns of canonical El Niño and El Niño Modoki events, the patterns of 100 hPa temperature anomalies in the two types of El Niño events are similar; this result is in agreement with the results of Trenberth and Smith (2009). However, the 100 hPa temperature anomalies are smaller in El Niño Modoki events than in canonical El

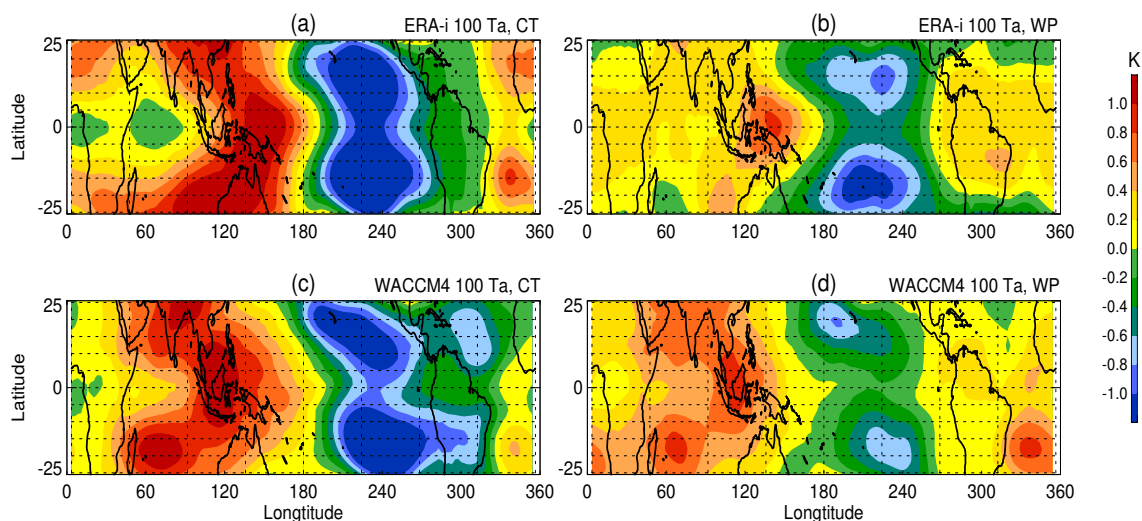


Fig. 4. Composite temperature anomalies at 100 hPa for (a) canonical El Niño events and (b) El Niño Modoki events, based on ERA-Interim data for 1979–2010. Temperature anomalies at 100 hPa for R2–R1 (c) and R3–R1 (d). Contour interval, ± 0.2 K.

Niño events (Fig. 4a and b). This phenomenon is further confirmed by WACCM4 simulations (Fig. 4c and d), implying that the internal equatorial waves, which affect tropopause temperature anomalies during ENSO periods, may be mainly motivated by the SSTAs in the equatorial western and middle Pacific, as patterns of SSTAs in these two regions during canonical El Niño and El Niño Modoki events are the same (Fig. 1). Because the SSTA gradient between the middle and western Pacific during El Niño Modoki events is weaker than that observed during canonical El Niño events, the corresponding tropopause temperature anomalies are also smaller (Fig. 4).

Figure 5 shows the cold point tropopause temperature anomalies associated with the two types of El Niño events. Here, the cold point tropopause is determined as the pressure level in the upper troposphere and lower stratosphere that has the lowest temperature. Figure 5 shows that the distributions and magnitudes of cold point tropopause temperature anomalies are similar to those of 100 hPa temperature anomalies.

A variety of processes govern water vapor concentrations in the TTL (see chapter 3 in SPARC, 2000). In the upper troposphere, water vapor concentrations are strongly correlated with convective activity (Chandra et al., 1998; Gettelman et al., 2001; McCormack et al., 2000; Newell et al., 1996). In the tropopause layer, temperature is a principal factor controlling water vapor changes, via freeze-drying processes (Brewer, 1949; Holton et al., 1995). Thus, changes in convection patterns and tropopause temperature during the two types of El Niño periods are likely linked with water vapor changes. In the subsequent paragraph, water vapor anomalies in the TTL during canonical El Niño and El Niño Modoki events are discussed, using ERA-Interim data, which may help to clarify patterns of stratospheric water vapor change during these two types of events.

Figure 6 shows upper tropospheric (250 hPa) water vapor anomalies for the two types of El Niño events. The data indicate that canonical El Niño activities significantly moisten the upper troposphere in the middle and eastern Pacific and the Indian Ocean (Fig. 6a), but dry the upper troposphere over the western Pacific and the Maritime Continent. This finding is consistent with observations of single El Niño events (Newell et al., 1996; Chandra et al., 1998; Gettelman et al., 2001). The upper tropospheric water vapor anomalies during El Niño Modoki periods show a different pattern from those of canonical El Niño periods. The locations of the maximum water vapor anomalies shift westward (Fig. 6b), and a negative anomaly is observed over the eastern Pacific. The magnitudes of positive and negative anomalies over the central Pacific and the Maritime Continent, respectively, during El Niño Modoki events are reduced, as compared with the anomalies associated with canonical El Niño events. The anomaly patterns in Fig. 6a and b resemble the OLR patterns during canonical El Niño and El Niño Modoki phases (Fig. 2a and b), respectively. That is, upper troposphere humidity anomalies are correlated with convection patterns. In addition, the EOF analysis revealed that the leading mode of the 250 hPa water vapor anomalies is associated with canonical El Niño patterns, while the second mode is associated with El Niño Modoki patterns (not shown). Figure 6c and d shows the 250 hPa water vapor anomalies in the two types of El Niño events obtained by the simulations from WACCM4 forced with observed SSTA. The model results are in good agreement with observations in the Pacific region. However, in the Indian Ocean a negative water vapor anomaly can be noted in simulations which is different from observations (Fig. 6a, b, c and d).

Figure 7 shows water vapor anomalies in the two types of El Niño events at 100 hPa. The anomalies during canonical

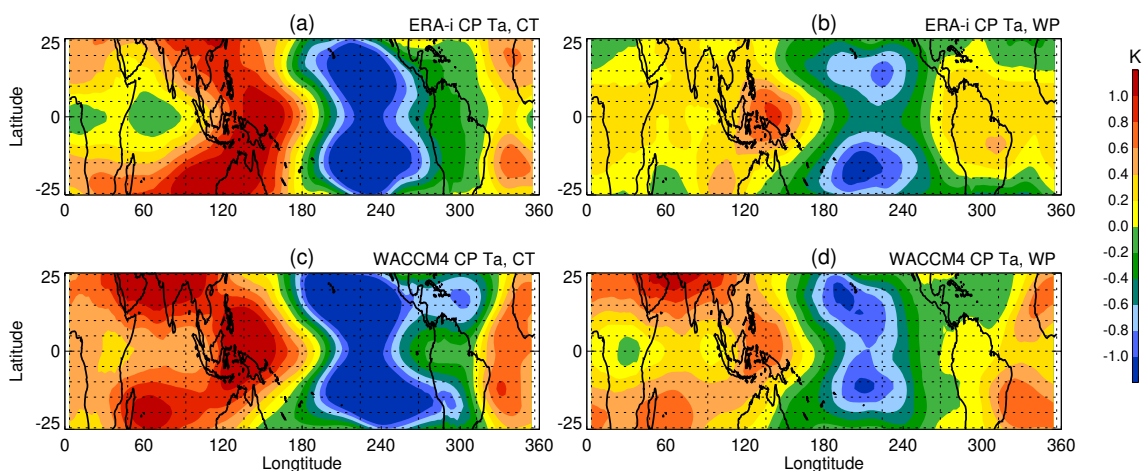


Fig. 5. Cold point temperature anomalies in the tropopause based on composite ERA-Interim data, 1979–2010: (a) canonical El Niño events, and (b) El Niño Modoki events. Anomalies in cold point tropopause temperatures, for R2–R1 (c) and R3–R1 (d). Contour intervals, ± 0.2 K.

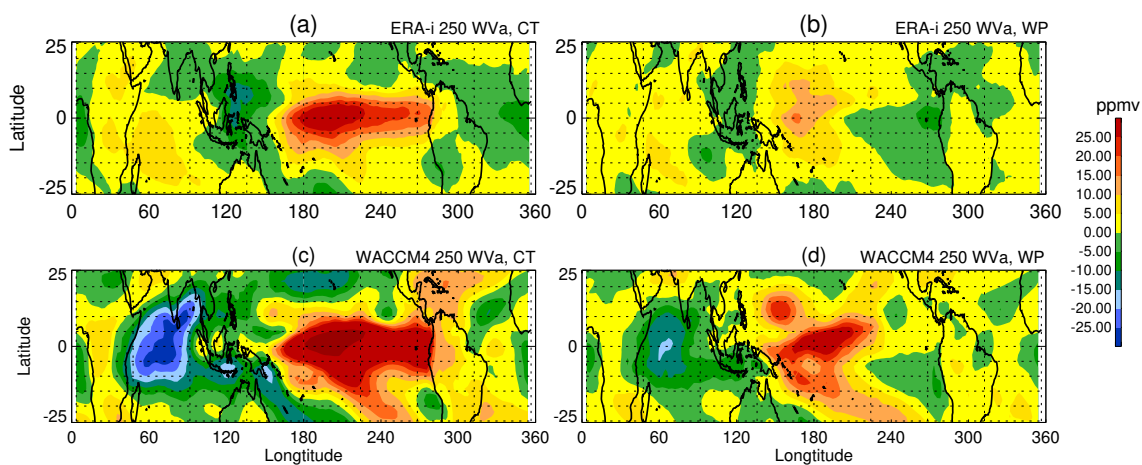


Fig. 6. Water vapor anomalies at 250 hPa based on composite ERA-Interim data, 1979–2010: (a) canonical El Niño events and (b) El Niño Modoki events. Water vapor anomalies at 250 hPa for R2–R1 (c) and R3–R1 (d). Contour intervals, ± 5 ppmv water vapor.

El Niño events (Fig. 7a) are generally consistent with temperature anomalies (Fig. 4a), i.e., negative and positive temperature anomalies are associated with negative and positive water vapor anomalies, respectively. As expected, patterns of water vapor anomalies in El Niño Modoki events are similar to those of canonical El Niño events (Fig. 7a and b); this is related to the fact that the two types of El Niño cause similar patterns of 100 hPa temperature anomalies (Fig. 4a and b). Similarly, the 100 hPa water vapor anomalies in El Niño Modoki events are smaller than those observed in canonical El Niño events; this is related to that the two types of El Niño cause different degree of anomalies of 100 hPa temperature. These results are confirmed by WACCM4 simulations (Fig. 7c and d).

4 El Niño Modoki signals in the stratosphere

The different SST-gradient patterns associated with canonical El Niño and El Niño Modoki events is likely to lead to the anomalous propagation and dissipation of ultralong Rossby waves in the stratosphere, which would cause profound and distinct stratospheric circulation anomalies. Thus, this section considers the effects of the two types of El Niño activities on circulation in the stratosphere, beginning with an analysis of the changes in Eliassen-Palm (E-P) fluxes (Eliassen and Palm, 1961; Andrews et al., 1987). E-P fluxes which represent wave activities related to the strengths of BD circulation and zonal mean flow, have been applied to analyze planetary wave propagation in previous studies (e.g., Randel, 1987; Hu and Tung, 2002; Hitoshi and Hirooka, 2004). An expression to calculate the E–P flux was given by Andrews et al. (1987). The meridional and vertical components of the

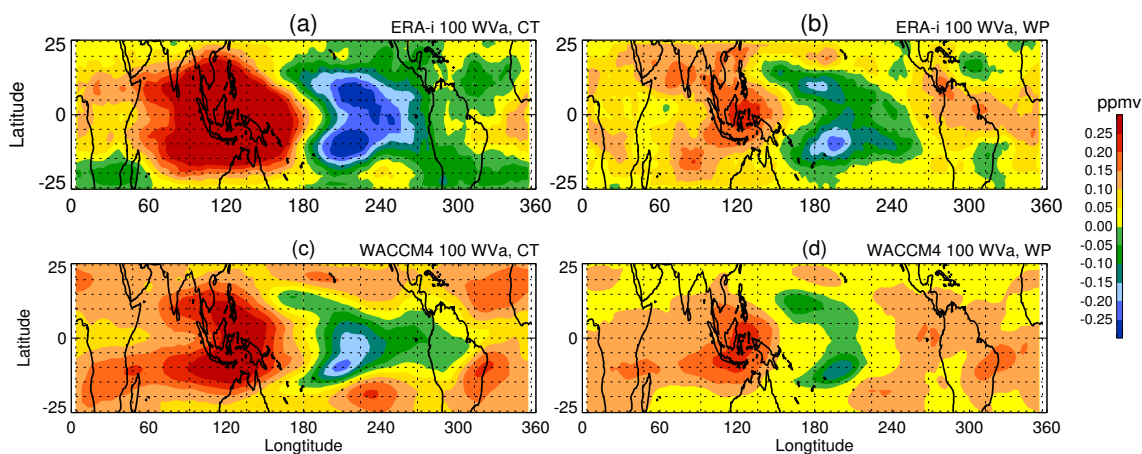


Fig. 7. Water vapor anomalies at 100 hPa based on composite ERA-Interim data, 1979–2010: (a) canonical El Niño events and (b) El Niño Modoki events. Water vapor anomalies at 100 hPa for R2–R1 (c) and R3–R1 (d). Contour intervals, ± 0.05 ppmv water vapor.

E-P flux are, respectively:

$$F_y = -\rho_o a(\cos\phi)\overline{v'u'}$$

$$F_z = \rho_o a(\cos\phi)f\overline{v'\theta'}/\theta_{0z},$$

where ρ_o is the density of background air, θ is the potential temperature, a is the radius of the earth, v is the meridional wind, u is the zonal wind, ϕ is the Earth's latitude, and f is Coriolis parameter. The subscript z denotes derivatives with respect to height z . The overbar denotes deviations from the zonal mean.

Figure 8 shows anomalies of the E-P flux, zonal wind, and temperature induced by two types of El Niño activities based on ERA-interim data. Anomalies that are significant at the 90% confidence level according to Student's t -test are shaded. Figure 8a demonstrates that canonical El Niño events increase the upward propagation of wave activity in the stratosphere in the Northern Hemisphere mid-latitudes, which suggests a strengthening of BD circulation in the Northern Hemisphere. Consequently, the northern polar vortex is weakened and warmed (Fig. 8a and b). These results are consistent with those of previous studies, showing that BD circulation in the Northern Hemisphere is enhanced during El Niño events (Manzini et al., 2006; Garfinkel and Hartmann, 2007; Free and Seidel, 2009), and that a warming of the northern polar vortex occurs during strong warm phases of ENSO can be found in both simulation (Cagnazzo et al., 2009) and observation (Free and Seidel, 2009). Recently, Hu and Pan (2009) found that tropical SST forces a warming trend in the Arctic stratosphere in early winter months in the past few decades, it may relates to the high frequency of warm phases of ENSO. Moreover, we found a significant decrease in wave activity in the Southern Hemisphere stratosphere suggests diminished BD circulation during canonical El Niño events, which is conducive to an increase in zonal wind in mid-latitudes stratosphere. Figure 8

also shows that canonical El Niño activities have no significant impact on the strength of the southern polar vortex; however, cooling is apparent in the southern polar vortex (Figs. 8a and b). This may be because the decreased EP fluxes in the Southern Hemisphere (Fig. 8a) reduce wave driven dynamic heat that lead to the significant cooling in the polar region. In addition, it also may be a result of decreased ozone transport from the tropical stratosphere to the Southern Hemisphere high-latitude stratosphere, and weakened adiabatic compression in the southern polar vortex because of weakened BD circulation during canonical El Niño events in the Southern Hemisphere.

It is interesting that the anomalies in wave activity, zonal wind, and temperature during El Niño Modoki events are, overall, different from those during canonical El Niño events. El Niño Modoki events cause a significant increase in wave activity in the Southern Hemisphere mid-latitude regions, which depresses and warms the southern polar vortex (Fig. 8c and d). Lin et al. (2012) and Hu and Fu (2009) found the stratosphere in the Southern Hemisphere high latitudes is warming since 1979 which may related with the high frequency of El Niño Modoki events. In a regression analysis using Japanese Reanalysis (JRA-25) and 40-yr European Centre for Medium-Range Weather Forecasts Re-Analysis (ERA-40) datasets, Trenberth and Smith (2006 and 2009) noticed different stratospheric temperatures in the Southern Hemisphere corresponding to the two types of El Niño events. These anomalies can also be reproduced by general climate model simulations (Zhou and Zhang, 2010). Through a composite analysis using a variety of reanalysis data, Hurwitz et al. (2011a) found a warming effect of El Niño Modoki events on the southern polar vortex, and they further noted that the enhancement of wave activity in the Southern Hemisphere is associated with the easterly phase of the QBO during El Niño Modoki events. However, we found El Niño Modoki activities also have a relatively weak but

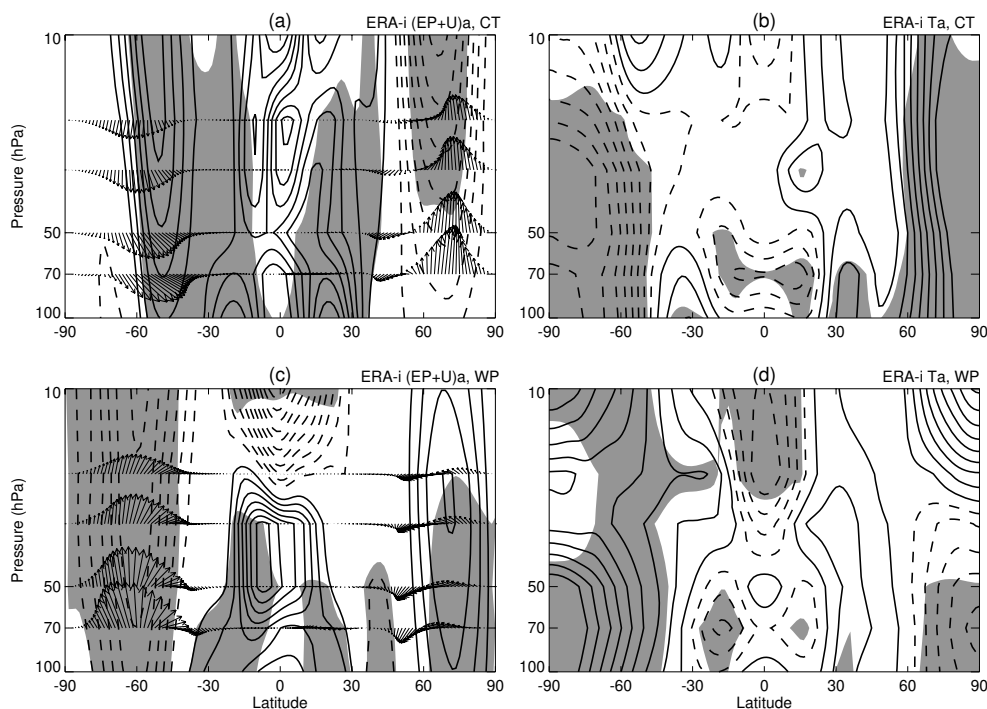


Fig. 8. Composite anomalies of the E-P flux and zonal wind for (a) canonical El Niño events and (c) El Niño Modoki events, based on ERA-Interim data for 1979–2010. The unit horizontal vector is 10^7 kg s^{-1} and the unit vertical vector is 10^5 kg s^{-1} . The contour interval for zonal wind anomalies is $\pm 0.25 \text{ m s}^{-1}$. Composite anomalies of temperature for (b) canonical El Niño events and (d) El Niño Modoki events, based on ERA-Interim data for 1979–2010. Contour interval for temperature anomalies, $\pm 0.15 \text{ K}$. Anomalies that are significant at the 90 % confidence level according to Student's t-test are shaded. Solid and dashed lines represent positive and negative anomalies, respectively.

significant effect on the Northern Hemisphere high-latitude stratosphere; they suppress the upward propagation of wave activity, which corresponds to a stronger and colder northern polar vortex. Note that significant zonal wind and temperature anomalies in the tropical stratosphere corresponding to the two types of El Niño events should be related to the QBO; however, the anomalies in El Niño Modoki events show diverse patterns as compared with those of typical El Niño events (Fig. 8). That is, positive and negative anomalies in upper stratosphere zonal wind are of typical El Niño and El Niño Modoki periods, respectively, and positive and negative anomalies in lower stratosphere temperatures are of typical El Niño and El Niño Modoki periods, respectively.

The results in Fig. 8 imply that canonical El Niño events have a more significant impact on the high-latitude Northern Hemisphere stratosphere than they do on the high-latitude Southern Hemisphere stratosphere. In contrast, El Niño Modoki events can more profoundly influence the high-latitude Southern Hemisphere stratosphere than the high-latitude Northern Hemisphere stratosphere.

Some previous studies pointed out that the El Niño Modoki signal in the stratosphere is not sensitive to QBO phases (Hurwitz et al., 2011b; Zubiaurre and Calvo, 2012; Sassi et al., 2004). However, Hurwitz et al. (2011a) showed that the enhancement of wave activity in the Southern Hemi-

sphere is associated with the easterly phase of the QBO during El Niño Modoki events. Garfinkel and Hartmann (2008 and 2010) found that the QBO can alter the strength of the interaction between North Pacific teleconnection (PNA) and El Niño in the troposphere. In particular they showed that El Niño teleconnections are weaker during the QBO east phase than during QBO west phase. Since the wave activities in the stratosphere and PNA can be modified by the QBO, it is understandable that stratospheric responses to El Niño Modoki events are sensitive to different phases of the QBO.

Figure 9 shows the composite anomalies of the tropospheric zonal wind and 300 hPa geopotential anomalies based on ERA-interim data for canonical El Niño events and El Niño Modoki events. It is apparent from Fig. 9a and b that typical El Niño give rise to a stronger subtropical jet which results in a stronger PNA. Thus, more planetary waves are transported into the Northern Hemisphere high-latitude stratosphere and result in a weaker polar vortex (Fig. 8a and b). The results here are in accordance with the results in Garfinkel and Hartmann (2008 and 2010). On contrast, the subtropical jet anomalies in El Niño Modoki events are much smaller than those in canonical El Niño events in the both hemisphere and the PNA anomalies are not significant during El Niño Modoki events. The zonal wind anomalies in the middle-high latitudes in El Niño Modoki events are also

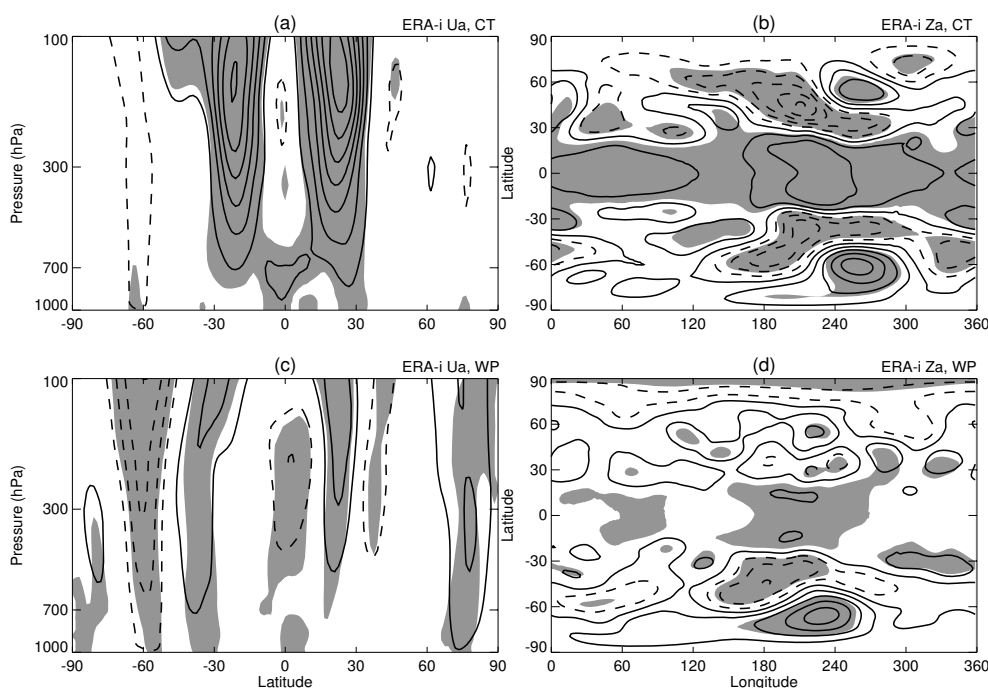


Fig. 9. Composite anomalies of the zonal wind for (a) canonical El Niño events and (c) El Niño Modoki events, based on ERA-Interim data for 1979–2010. The contour interval for zonal wind anomalies is $\pm 0.4 \text{ m s}^{-1}$. Composite anomalies of the Geopotential at 300 hPa for (b) canonical El Niño events and (d) El Niño Modoki events, based on ERA-Interim data for 1979–2010. The contour interval for Geopotential anomalies is $\pm 100 \text{ m}^2 \text{ s}^{-2}$. Anomalies that are significant at the 90 % confidence level according to Student's t-test are shaded. Solid and dashed lines represent positive and negative anomalies, respectively.

very much different from those in typical El Niño (Fig. 9c and d). Given the above differences in subtropical jet, PNA and zonal wind, the wave propagation from troposphere to the stratosphere during El Niño Modoki events should be different from that during canonical El Niño events. This is the main reason that the circulation anomalies during El Niño Modoki events are much different from those in canonical El Niño events in the high-latitude stratosphere (Fig. 8).

Figure 10 further shows differences of the zonal wind between run R2 and R1, and between run R3 and R1 under different phases of the QBO. It is apparent that, no matter in QBO west and east phase, canonical El Niño causes the same zonal wind anomalies in the stratosphere (Fig. 10a and b) and the anomalies are in accordance with the composite analysis based on ERA-interim data (Fig. 8a). On contrast, El Niño Modoki leads to different zonal wind anomalies during QBO west and east phases (Fig. 10c and d). In the QBO west phase, the zonal wind anomalies caused by El Niño Modoki are similar with the anomalies resulted from canonical El Niño (Fig. 10c, a and b). However, in the QBO east phase, the negative zonal wind anomalies in the southern high-latitude stratosphere (weaker Antarctic polar vortex) caused by El Niño Modoki are much larger than those in the QBO west phase, and those negative anomalies extend to southern middle-latitude stratosphere. Also note that during the QBO east phase El Niño Modoki causes positive

zonal wind anomalies in the northern high-latitude stratosphere (stronger Arctic polar vortex).

The modeling results here suggest that the east phase QBO has an important influence, not only on the El Niño Modoki signal in Southern Hemisphere stratosphere, but also on the El Niño Modoki signal in Northern Hemisphere stratosphere. The composite analysis based on our model simulations indicate that the canonical El Niño anomalies are not sensitive to QBO and El Niño Modoki anomalies are also not sensitive to the west phase QBO, but El Niño Modoki is sensitive to the east phase QBO. However, the modeling results in previous studies illustrated that the El Niño Modoki signal in the stratosphere is not sensitive to QBO phases (Hurwitz et al., 2011b; Zubiaurre and Calvo, 2012; Sassi et al., 2004). This discrepancy is possibly due to that the different models from WACCM4 were used in those previous studies. Particularly noticeable in Fig. 8 is that the El Niño Modoki has a reverse effect on the high-latitude stratosphere compared with canonical El Niño and this reverse effect should be related to the interaction between the east phase QBO and El Niño Modoki signal in the stratosphere.

To further examine whether the stratospheric El Niño anomalies are different with and without the QBO in the model, the other three experiments (R4, R5, and R6) are performed to investigate the circulation anomalies in the stratosphere during two kinds of El Niño events in the absence of

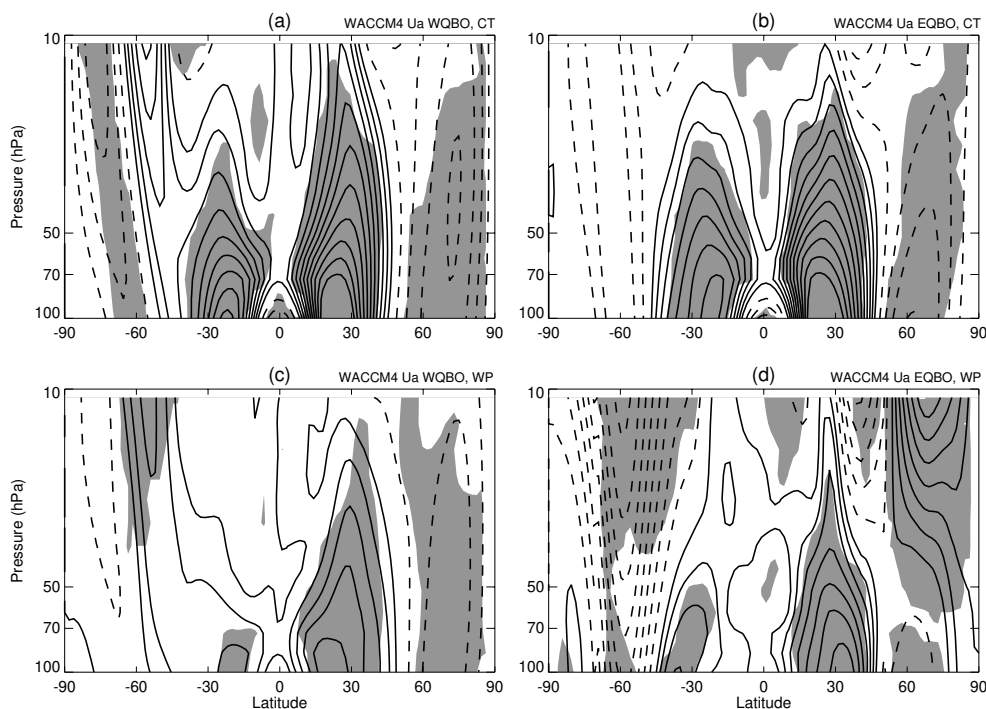


Fig. 10. Differences of the zonal wind for R2–R1 when QBO in (a) west phase and (b) east phase. The contour interval for zonal wind anomalies is $\pm 0.25 \text{ m s}^{-1}$. Solid and dashed lines represent positive and negative anomalies, respectively. Anomalies that are significant at the 90 % confidence level according to Student's t-test are shaded. (c) and (d) are same as (a) and (b), but for R3–R1.

QBO. The experiments R4, R5 and R6 have the same configuration as the experiment R1, R2 and R3, respectively, except that the experiments R4, R5, and R6 are run without impose a QBO forcing in the model. Figure 11a and b show modeled zonal wind anomalies, forced with observed SSTAs in the typical El Niño and El Niño Modoki events but without a QBO forcing in the model. Compared with Fig. 10, Fig. 11 illustrates that the effects of canonical El Niño activities on middle-high latitudes stratosphere in the absence of QBO are similar with the effects when there is a QBO forcing in the model (Figs. 10a, b and 11a). The simulations R4, R5 and R6 also confirm the result in Garfinkel and Hartmann (2007) that the warm phase ENSO has a significant effect on the polar vortex. However, the simulated zonal wind anomalies forced by El Niño Modoki SSTA are similar to the simulated results forced by typical El Niño SSTA when the QBO forcing is excluded in the model (Fig. 11a and b). This result suggests that the model cannot accurately reproduce the effects of El Niño Modoki activities on the wave propagation in the either hemisphere stratosphere when a QBO forcing is not imposed in the model. And it also suggests typical El Niño and El Niño Modoki activities actually have the same influences on mid-high latitudes stratosphere when without the disturbance of the QBO signal on the ENSO signal.

It is interesting to note that, if QBO signals are filtered out of the composite zonal wind anomaly data obtained from the ERA-Interim time series dataset using the 24–40 months

band-pass filter (as in Pascoe et al., 2005), the resulting zonal wind anomalies are virtually identical to those obtained for canonical El Niño periods using the WACCM4 forced by observed SSTA but in the absence of QBO (Fig. 11a and c). However, the zonal wind anomalies obtained from filtered ERA-Interim time series data for El Niño Modoki periods are unlike the anomalies obtained using the WACCM4 forced by observed SSTA but in the absence of QBO (Fig. 11b and d), they are still associated with the zonal wind anomalies obtained from the original ERA-Interim time series dataset for the high-latitude stratosphere (Fig. 8b and 11d), only the degree of anomalies become weaker. The present results reveal that anomalies in stratospheric zonal wind during El Niño Modoki periods are not a simply linear overlay of the QBO and ENSO signals; there is a complicated interaction between the QBO signal and El Niño Modoki signal. The interaction affects the tropospheric zonal wind anomalies which changes the planetary wave activity in the stratosphere. This has been investigated in Fig. 9.

5 Summary and conclusions

We investigated and compared the potential effects of the two types of El Niño events (canonical El Niño and El Niño Modoki) on the TTL and stratosphere, using composite analyses of ERA-Interim reanalysis data, based on the N31 and

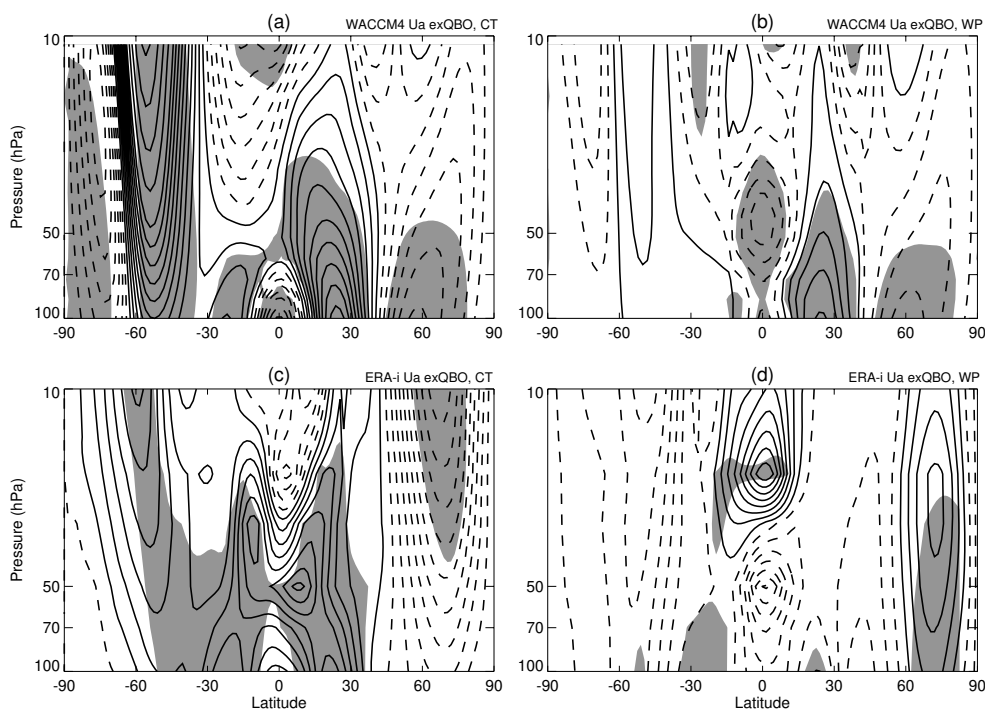


Fig. 11. Differences of the zonal wind for (a) R5–R4 and (b) R6–R4. Composite anomalies of zonal wind for (c) canonical El Niño events and (d) El Niño Modoki events, obtained using ERA-Interim data that filtered QBO (see text for details). The contour interval for zonal wind anomalies is $\pm 0.25 \text{ m s}^{-1}$. Solid and dashed lines represent positive and negative anomalies, respectively. Anomalies that are significant at the 90 % confidence level according to Student's t-test are shaded.

the EMI. As was found in earlier studies, the present results show that canonical El Niño events tend to enhance convection in the middle and eastern Pacific and weaken convection over the western Pacific. El Niño Modoki events, on the other hand, depress convection in the western and eastern Pacific and intensify convection in the central and northern Pacific; this leads to negative anomalies of upper tropospheric water vapor in the western and eastern Pacific but positive anomalies in the central and northern Pacific. These patterns of OLR and upper tropospheric water vapor anomalies caused by El Niño Modoki events correspond with a tripolar form. In addition, the positive and negative convection anomalies associated with El Niño Modoki events in the middle and western Pacific, respectively, are smaller than those associated with canonical El Niño events. An EOF analysis of the OLR and upper tropospheric water vapor anomalies demonstrates that the leading mode is a result of canonical El Niño events, and that the second mode is a result of El Niño Modoki events. El Niño activities lead to similar patterns of tropopause temperature and water vapor anomalies as those of canonical El Niño activities, although the El Niño Modoki anomalies are smaller than those of canonical El Niño events. The above results are also supported by general climate model simulations.

We also found that the two types of El Niño activities have significantly different effects on the stratosphere. This is be-

cause the interaction between QBO signal and two types of El Niño signal. The effects of the QBO signal mainly changes the degree of anomalies caused by canonical El Niño on the stratosphere, whereas there is a complex interaction between the QBO signal and El Niño Modoki signal. Because of this interaction, El Niño Modoki events have a reverse effect on stratospheric circulation at high latitudes, as compared with that of canonical El Niño events. During El Niño Modoki events, the northern polar vortex is stronger and colder but the southern polar vortex is weaker and warmer. According to the simulation's results, we found that the reverse effect on high latitudes stratosphere as a result of a complicated interaction between east phase QBO signal and El Niño Modoki signal. This interaction is not a simply linear overlay of east phase QBO signal and El Niño Modoki in the stratosphere, it is because El Niño Modoki with QBO forcing leads to different tropospheric zonal wind anomalies from those caused by typical El Niño, thus, the planetary wave propagation from troposphere to the stratosphere is different during El Niño Modoki events from that during canonical El Niño events. However, when QBO in west phase, El Niño Modoki events have a same effect on the high latitudes stratosphere, as compared with the effect of typical El Niño events. Furthermore, the simulations suggest that canonical El Niño and El Niño Modoki activities actually have the same influence on high latitudes stratosphere, in the

absence of QBO forcing. Finally, the present results suggest that canonical El Niño events have a more significant impact on the high-latitude Northern Hemisphere stratosphere than on the high-latitude Southern Hemisphere stratosphere. However, El Niño Modoki events more profoundly influence the high-latitude Southern Hemisphere stratosphere than they do the high-latitude Northern Hemisphere stratosphere.

Acknowledgements. This work was jointly supported by the 973 Program (2010CB950400), 973 Program (2010CB428604), the National Natural Science Foundation of China (41030961), and Postdoctoral Science Foundation (2012M510525). We thank ECMWF for meteorological data and NOAA for OLR and ONI data. The WACCM4 model is provided by NCAR.

Edited by: Q. Fu

References

- Ashok, K. and Yamagata, T.: The El Niño with a difference, *Nature*, 461, 481–484, 2009.
- Ashok, K., Behera, S., Rao, S., Weng, H., and Yamagata, T.: El Niño Modoki and its teleconnection, *J. Geophys. Res.*, 112, C11007, doi:10.1029/2006JC003798, 2007.
- Andrews, D. G., Holton, J. R., and Leovy, C. B.: *Middle Atmosphere Dynamics*, Academic Press Inc., 489 pp., 1987.
- Brewer, A. W.: Evidence for a world circulation provided by the measurements of helium and water vapour distribution in the stratosphere, *Q. J. Roy. Meteor. Soc.*, 75, 351–363, doi:10.1002/qj.49707532603, 1949.
- Cagnazzo, C., Manzini, E., Calvo, N., Douglass, A., Akiyoshi, H., Bekki, S., Chipperfield, M., Dameris, M., Deushi, M., Fischer, A. M., Garny, H., Gettelman, A., Giorgetta, M. A., Plummer, D., Rozanov, E., Shepherd, T. G., Shibata, K., Stenke, A., Struthers, H., and Tian, W.: Northern winter stratospheric temperature and ozone responses to ENSO inferred from an ensemble of Chemistry Climate Models, *Atmos. Chem. Phys.*, 9, 8935–8948, doi:10.5194/acp-9-8935-2009, 2009.
- Cai, W. J. and Cowan, T.: La Niña Modoki impacts Australia autumn rainfall variability, *Geophys. Res. Lett.*, 36, L12805, doi:10.1029/2009GL037885, 2009.
- Calvo, N., Garcia, R., Garcia Herrera, R., Gallego, D., Gimeno, L., Hernández, E., and Ribera, P.: Analysis of the ENSO signal in tropospheric and stratospheric temperatures observed by MSU, 1979–2000, *J. Climate*, 17, 3934–3946, 2004.
- Camp, C. D. and Tung, K.-K.: Stratospheric polar warming by ENSO in winter: A statistical study, *Geophys. Res. Lett.*, 34, L04809, doi:10.1029/2006GL028521, 2007.
- Chandra, S., Ziemke, J. R., Min, W., and Read, W. G.: Effects of 1997–1998 El Niño on tropospheric ozone and water vapor, *Geophys. Res. Lett.*, 25, 3867–3870, 1998.
- Deser, C., and Wallace, J. M.: Large-scale atmospheric circulation features associated with warm and cold episodes in the tropical Pacific, *J. Climate*, 3, 1254–1281, 1990.
- Eliassen, A. and Palm, E.: On the transfer of energy in stationary mountain waves, *Geophys. Publ.*, 22, 1–23, 1961.
- Feng, J. and Li, J.: Influence of El Niño Modoki on spring rainfall over south China, *J. Geophys. Res.*, 116, D13102, doi:10.1029/2010JD015160, 2011.
- Free, M. and Seidel, D. J.: The observed ENSO temperature signal in the stratosphere, *J. Geophys. Res.*, doi:10.1029/2009JD012420, 2009.
- Garcia, R. R., Marsh, D. R., Kinnison, D. E., Boville, B. A., and Sassi, F.: Simulation of secular trends in the middle atmosphere, 1950–2003, *J. Geophys. Res.*, 112, D09301, doi:10.1029/2006JD007485, 2007.
- García-Herrera, R., Calvo, N., Garcia, R. R., and Giorgetta, M. A.: Propagation of ENSO temperature signals into the middle atmosphere: A comparison of two general circulation models and ERA-40 reanalysis data, *J. Geophys. Res.*, 111, D06101, doi:10.1029/2005JD006061, 2006.
- Garfinkel, C. I. and Hartmann, D. L.: Effects of El Niño – Southern Oscillation and the Quasi-Biennial Oscillation on polar temperatures in the stratosphere, *J. Geophys. Res.*, 112, D19112, doi:10.1029/2007JD008481, 2007.
- Garfinkel, C. I. and Hartmann, D. L.: Different ENSO teleconnections and their effects on the stratospheric polarvortex, *J. Geophys. Res.*, 113, D18114, doi:10.1029/2008JD009920, 2008.
- Garfinkel, C. I. and Hartmann, D. L.: Influence of the quasi-biennial oscillation on the North Pacific and El Niño teleconnections, *J. Geophys. Res.*, 115, D20116, doi:10.1029/2010JD014181, 2010.
- Gettelman, A., Randel, W. J., Massie, S., and Wu, F.: El Niño as a Natural Experiment for Studying the Tropical Tropopause Region, *J. Climate*, 14, 3375–3392, 2001.
- Hamilton, K.: An examination of observed Southern Oscillation effects in the Northern Hemisphere stratosphere, *J. Atmos. Sci.*, 50, 3468–3473, 1993.
- Hitoshi, M. and Hirooka, T.: Predictability of stratospheric sudden warming: A case study for 1998/99 winter, *Mon. Weather Rev.*, 132, 1764–1776, 2004.
- Holton, J. R., Haynes, P. H., Douglass, A. R., Rood, R. B., and Pfister, L.: Stratosphere-troposphere exchange, *Rev. Geophys.*, 33, 403–439, 1995.
- Hu, Y. and Fu, Q.: Stratospheric warming in Southern Hemisphere high latitudes since 1979, *Atmos. Chem. Phys.*, 9, 4329–4340, doi:10.5194/acp-9-4329-2009, 2009.
- Hu, Y. and Pan, L.: Arctic stratospheric winter warming forced by observed SSTs, *Geophys. Res. Lett.*, 36, L11707, doi:10.1029/2009GL037832, 2009.
- Hu, Y. and Tung, K. K.: Interannual and decadal variations of planetary wave activity stratospheric cooling and northern hemisphere annular mode, *J. Climate*, 15, 1659–1673, 2002.
- Hurwitz, M. M., Newman, P. A., Oman, L. D., and Molod, A. M.: Response of the Antarctic Stratosphere to Two Types of El Niño Events, *J. Atmos. Sci.*, 68, 812–822, doi:10.1175/2011JAS3606.1, 2011a.
- Hurwitz, M. M., Song, I.-S., Oman, L. D., Newman, P. A., Molod, A. M., Frith, S. M., and Nielsen, J. E.: Response of the Antarctic stratosphere to warm pool El Niño Events in the GEOS CCM, *Atmos. Chem. Phys.*, 11, 9659–9669, doi:10.5194/acp-11-9659-2011, 2011b.
- Kao, H. and Yu, J.: Contrasting Eastern-Pacific and Central-Pacific Types of ENSO, *J. Climate*, 22, 615–632, doi:10.1175/2008JCLI2309.1, 2009.

- Kiladis, G. N., Straub, K. H., Reid, G. C., and Gage, K. S.: Aspects of interannual and intraseasonal variability of the tropopause and lower stratosphere, *Q. J. Roy. Meteor. Soc.*, 127, 1961–1983, doi:10.1002/qj.49712757606, 2001.
- Lin, P., Fu, Q., and Hartmann, D.: Impact of tropical SST on stratospheric planetary waves in the Southern Hemisphere, *J. Climate*, doi:10.1175/JCLI-D-11-00378.1, in press, 2012.
- Manzini, E., Giorgetta, M. A., Esch, M., Kornbluh, L., and Roeckner, E.: The Influence of Sea Surface Temperatures on the Northern Winter Stratosphere: Ensemble Simulations with the MAECHAM5 Model, *J. Climate*, 19, 3863–3881, 2006.
- McCormack, J. P., Fu, R., and Read, W. G.: The influence of convective outflow on water vapor mixing ratios in the tropical upper troposphere: An analysis based on UARS MLS measurements, *Geophys. Res. Lett.*, 27, 525–528, 2000.
- Newell, R. E. and Gould-Stewart, S.: A stratospheric fountain?, *J. Atmos. Sci.*, 38, 2789–2796, 1981.
- Newell, R. E., Zhu, Y., Browell, E. V., Read, W. G., and Waters, J. W.: Walker circulation and tropical upper tropospheric water vapor, *J. Geophys. Res.*, 101, 1961–1974, 1996.
- Philander, S. G.: *El Niño, La Niña and the Southern Oscillation*, Academic Press, 293 pp., 1990.
- Pascoe, C. L., Gray, L. J., Crooks, S. A., Jukes, M. N., and Baldwin, M. P.: The quasi-biennial oscillation: Analysis using ERA-40 data, *J. Geophys. Res.*, 110, D08105, doi:10.1029/2004JD004941, 2005.
- Randel, W. J.: Study of planetary waves in the southern winter Troposphere and Stratosphere. Part I: wave structure and vertical propagation, *J. Atmos. Sci.*, 44, 917–935, 1987.
- Randel, W. J., Wu, F., and Gaffen, D. J.: Interannual variability of the tropical tropopause derived from radiosonde data and NCEP reanalysis, *J. Geophys. Res.*, 105, 509–523, 2000.
- Rasmusson, E. M. and Carpenter, T. H.: Variations in tropical sea surface temperature and surface wind fields associated with the Southern Oscillation/El Niño, *Mon. Weather Rev.*, 110, 354–384, doi:10.1175/1520-0493(1982)110<0354:VITSST>2.0.CO;2, 1982.
- Rayner, N. A., Brohan, P., Parker, D. E., Folland, C. K., Kennedy, J. J., Vanicek, M., Ansell, T., and Tett, S. F. B.: Improved analyses of changes and uncertainties in sea surface temperature measured in situ since the mid-nineteenth century: the HadSST2 data set, *J. Climate*, 19, 446–469, 2006.
- Reid, G. C. and Gage, K. S.: Interannual variations in the height of the tropical tropopause, *J. Geophys. Res.*, 90, 5629–5635, 1985.
- Reid, G. C., Gage, K. S., and McAfee, J. R.: The thermal response of the tropical atmosphere to variations in equatorial Pacific sea surface temperature, *J. Geophys. Res.*, 94, 705–716, 1989.
- Sassi, F., Kinnison, D., Boville, B. A., Garcia, R. R., and Roble, R.: Effect of El Niño-Southern Oscillation on the dynamical, thermal, and chemical structure of the middle atmosphere, *J. Geophys. Res.*, 109, D17108, doi:10.1029/2003JD004434, 2004.
- Scaife, A. A., Butchart, N., Jackson, D. R., and Swinbank, R.: Can changes in ENSO activity help to explain increasing stratospheric water vapor?, *Geophys. Res. Lett.*, 30, 1880, doi:10.1029/2003GL017591, 2003.
- Simmons, A., Uppala, S., Dee, D., and Kobayashi, S.: ERA-Interim: New ECMWF reanalysis products from 1989 onwards, *ECMWF Newsletter*, 110, 25–25, 2007a.
- Simmons, A., Uppala, S., and Dee, D.: Update on ERAInterim, *ECMWF Newsletter*, 111, p. 5, 2007b.
- SPARC: SPARC Assessment of water vapor in the upper troposphere and lower stratosphere, *Stratospheric Processes and Their Role in Climate*, WMO/TD-1043, 312 pp., 2000.
- Taguchi, M. and Hartmann, D. L.: Increased occurrence of stratospheric sudden warmings during El Niño as simulated by WACCM, *J. Climate*, 19, 324–332, 2006.
- Taschetto, A. S. and England, M. H.: El Niño Modoki impacts on Australian rainfall, *J. Climate*, 22, 3167–3174, doi:10.1175/2008JCLI2589.1, 2009.
- Trenberth, K. E.: The definition of El Niño, *B. Am. Meteorol. Soc.*, 78, 2771–2777, doi:10.1175/1520-0477(1997)078<2771:TDOENO>2.0.CO;2, 1997.
- Trenberth, K. E. and Smith, L.: The vertical structure of temperature in the tropics: Different flavors of El Niño, *J. Climate*, 19, 4956–4970, 2006.
- Trenberth, K. E. and Smith, L.: Variations in the three-dimensional structure of the atmospheric circulation with different flavors of El Niño, *J. Climate*, 22, 2978–2991, 2009.
- Trenberth, K. E. and Stepaniak, D. P.: Indices of El Niño evolution, *J. Climate*, 14, 1697–1701, 2001.
- Uppala, S., Dee, D., Kobayashi, S., Berrisford, P., and Simmons, A.: Towards a climate data assimilation system: status update of ERA-Interim, *ECMWF Newsletter*, 115, 12–18, 2008.
- Van Loon, H. and Labitzke, K.: The Southern Oscillation. Part V: The anomalies in the lower stratosphere of the Northern Hemisphere in winter and a comparison with the quasi-biennial oscillation, *Mon. Weather Rev.*, 115, 357–369, 1987.
- Weng, H. Y., Karumuri, A., Swadhin, K. B., Suryachandra, A. R., and Toshio, Y.: Impacts of recent El Niño Modoki on dry/wet conditions in the Pacific rim during boreal summer, *Clim. Dynam.*, 29, 113–129, doi:10.1007/s00382-007-0234-0, 2007.
- Weng, H. Y., Behera, S. K., and Yamagata, T.: Anomalous winter climate conditions in the Pacific rim during recent El Niño Modoki and El Niño events, *Clim. Dynam.*, 32, 663–674, doi:10.1007/s00382-008-0394-6, 2009.
- World Meteorological Organization (WMO): Scientific Assessment of Ozone Depletion: 2002, *WMO Global Ozone Research and Monitoring Project-Report Np.*, 47, Geneva, Switzerland, 2003.
- Xie, F., Tian, W., Austin, J., Li, J., Tian, H., Shu, J., and Chen, C.: The effect of ENSO activity on lower stratospheric water vapor, *Atmos. Chem. Phys. Discuss.*, 11, 4141–4166, doi:10.5194/acpd-11-4141-2011, 2011.
- Yeh, S., Kug, J., Dewitte, B., Kwon, M., Kirtman, B., and Jin, F.: El Niño in a changing climate, *Nature*, 461, 511–514, 2009.
- Yu, J. and Kao, H.: Decadal changes of ENSO persistence barrier in SST and ocean heat content indices: 1958–2001, *J. Geophys. Res.*, 112, D13106, doi:10.1029/2006JD007654, 2007.
- Yu, J., Kao, H., and Lee, T.: Subtropics-Related Interannual Sea Surface Temperature Variability in the Central Equatorial Pacific, *J. Climate*, 23, 2869–2884, doi:10.1175/2010JCLI3171.1, 2010.
- Yulaeva, E., Holton, J. R., and Wallace, J. M.: On the cause of the annual cycle in the tropical lower stratospheric temperature, *J. Atmos. Sci.*, 51, 169–174, 1994.
- Zhang, W. J., Li, J. P., and Jin, F. F.: Spatial and temporal features of ENSO meridional scales, *Geophys. Res. Lett.*, 36, L15605, doi:10.1029/2009GL038672, 2009.

Zhang, W. J., Li, J. P., and Zhao, X.: Sea surface temperature cooling mode in the Pacific cold tongue, *J. Geophys. Res.*, 115, C12042, doi:10.1029/2010JC006501, 2010.

Zhou, T. J. and Zhang, J.: The Vertical Structures of Atmospheric Temperature Anomalies Associated with Two Flavors of El Niño Simulated by AMIP II Models, *J. Climate*, 24, 1053–1070, doi:10.1175/2010JCLI3504.1, 2010.

Zubiaurre, I. and Calvo, N.: The El Niño–Southern Oscillation (ENSO) Modoki signal in the stratosphere, *J. Geophys. Res.*, 117, D04104, doi:10.1029/2011JD016690, 2012.