

Washington University School of Medicine

Digital Commons@Becker

---

Open Access Publications

---

12-10-2020

## Single-arm prospective interventional study assessing feasibility of using gallium-68 ventilation and perfusion PET/CT to avoid functional lung in patients with stage III non-small cell lung cancer

Nicholas Bucknell  
*University of Melbourne*

Amir Iravani  
*Washington University School of Medicine in St. Louis*

et al

Follow this and additional works at: [https://digitalcommons.wustl.edu/open\\_access\\_pubs](https://digitalcommons.wustl.edu/open_access_pubs)

---

### Recommended Citation

Bucknell, Nicholas; Iravani, Amir; and et al, "Single-arm prospective interventional study assessing feasibility of using gallium-68 ventilation and perfusion PET/CT to avoid functional lung in patients with stage III non-small cell lung cancer." *BMJ Open*. 10,12. . (2020).  
[https://digitalcommons.wustl.edu/open\\_access\\_pubs/10504](https://digitalcommons.wustl.edu/open_access_pubs/10504)

This Open Access Publication is brought to you for free and open access by Digital Commons@Becker. It has been accepted for inclusion in Open Access Publications by an authorized administrator of Digital Commons@Becker. For more information, please contact [vanam@wustl.edu](mailto:vanam@wustl.edu).

# BMJ Open Single-arm prospective interventional study assessing feasibility of using gallium-68 ventilation and perfusion PET/CT to avoid functional lung in patients with stage III non-small cell lung cancer

Nicholas Bucknell <sup>1,2</sup>, Nicholas Hardcastle,<sup>3,4</sup> Price Jackson,<sup>2,3</sup> Michael Hofman,<sup>2,5</sup> Jason Callahan,<sup>5</sup> Peter Eu,<sup>5,6</sup> Amir Iravani,<sup>5,7</sup> Rhonda Lawrence,<sup>1</sup> Olga Martin,<sup>2</sup> Mathias Bressel,<sup>8</sup> Beverley Woon,<sup>9</sup> Benjamin Blyth,<sup>1,2</sup> Michael MacManus,<sup>1,2</sup> Keelan Byrne,<sup>1</sup> Daniel Steinfort,<sup>10,11</sup> Tomas Kron,<sup>2,3</sup> Gerard Hanna <sup>1,2</sup>, David Ball,<sup>1,2</sup> Shankar Siva<sup>1,2</sup>

**To cite:** Bucknell N, Hardcastle N, Jackson P, *et al*. Single-arm prospective interventional study assessing feasibility of using gallium-68 ventilation and perfusion PET/CT to avoid functional lung in patients with stage III non-small cell lung cancer. *BMJ Open* 2020;**10**:e042465. doi:10.1136/bmjopen-2020-042465

► Prepublication history and additional material for this paper is available online. To view these files, please visit the journal online (<http://dx.doi.org/10.1136/bmjopen-2020-042465>).

Received 08 July 2020  
Revised 23 October 2020  
Accepted 06 November 2020



© Author(s) (or their employer(s)) 2020. Re-use permitted under CC BY-NC. No commercial re-use. See rights and permissions. Published by BMJ.

For numbered affiliations see end of article.

## Correspondence to

Dr Nicholas Bucknell;  
[nick.bucknell@petermac.org](mailto:nick.bucknell@petermac.org)

## ABSTRACT

**Background** In the curative-intent treatment of locally advanced lung cancer, significant morbidity and mortality can result from thoracic radiation therapy. Symptomatic radiation pneumonitis occurs in one in three patients and can lead to radiation-induced fibrosis. Local failure occurs in one in three patients due to the lungs being a dose-limiting organ, conventionally restricting tumour doses to around 60 Gy. Functional lung imaging using positron emission tomography (PET)/CT provides a geographic map of regional lung function and preclinical studies suggest this enables personalised lung radiotherapy. This map of lung function can be integrated into Volumetric Modulated Arc Therapy (VMAT) radiotherapy planning systems, enabling conformal avoidance of highly functioning regions of lung, thereby facilitating increased doses to tumour while reducing normal tissue doses.

**Methods and analysis** This prospective interventional study will investigate the use of ventilation and perfusion PET/CT to identify highly functioning lung volumes and avoidance of these using VMAT planning. This single-arm trial will be conducted across two large public teaching hospitals in Australia. Twenty patients with stage III non-small cell lung cancer will be recruited. All patients enrolled will receive dose-escalated (69 Gy) functional avoidance radiation therapy. The primary endpoint is feasibility with this achieved if  $\geq 15$  out of 20 patients meet pre-defined feasibility criteria. Patients will be followed for 12 months post-treatment with serial imaging, biomarkers, toxicity assessment and quality of life assessment.

**Discussion** Using advanced techniques such as VMAT functionally adapted radiation therapy may enable safe moderate dose escalation with an aim of improving local control and concurrently decreasing treatment related toxicity. If this technique is proven feasible, it will inform the design of a prospective randomised trial to assess the clinical benefits of functional lung avoidance radiation therapy.

## Strengths and limitations of this study

- This is a novel trial interventional trial integrating Galligas/<sup>68</sup>Ga-macroaggregated albumin respiratory-gated (4-dimensional) ventilation/perfusion (positron emission tomography/CT) functional lung imaging into radiation treatment planning.
- Volumetric modulated arc therapy (VMAT) planning used in this trial aims to allow for moderate dose escalation to the primary only, while respecting conventional normal tissue toxicity constraints.
- This single-arm study will assess the technical feasibility of delivering personalised VMAT radiation.
- Radiation plans will be personalised to an individual's tumour location and spatial lung function.
- This single arm feasibility study is unable to assess effectiveness of reduction in pulmonary toxicity or enhanced tumour control but will nonetheless provide valuable information about the feasibility of conducting a larger-scale randomised trial.

**Ethics and dissemination** This study was approved by the Peter MacCallum Human Research Ethics Committee. All participants will provide written informed consent. Results will be disseminated via publications.

**Trials registration number** NCT03569072; Pre-results

## INTRODUCTION

In the curative treatment of locally advanced non-small cell lung cancer (NSCLC), significant treatment-related morbidity and even mortality can result from thoracic radiation therapy. The predominant mechanism behind treatment-related toxicity is radiation effects on the lung manifesting as



symptomatic radiation pneumonitis which occurs in up to one in three patients with fatal pneumonitis occurring in 2% of patients.<sup>1</sup> The risk of pneumonitis is related to the dose and volume of lung irradiated. Current lung dose volume constraints simplistically assume that the lungs are anatomically and functionally homogeneous. A number of factors increase pneumonitis risk further including the use of concurrent chemotherapy, interstitial lung disease and age.<sup>1</sup> The need to limit lung dose and other organs for safety reasons may contribute to the high local failure rate in stage III disease in one in three patients.<sup>2-5</sup>

### Integration of functional lung imaging into treatment planning

Lung imaging using inhaled Galligas and intravenously administered <sup>68</sup>Ga- macroaggregated albumin (MAA) enables acquisition of four-dimensional (4D) ventilation and perfusion (V/Q) positron emission tomography (V/Q, positron emission tomography (PET)/CT).<sup>6-7</sup> This provides a 3D map of lung V/Q.<sup>8</sup> Previous work has demonstrated a relationship between radiation therapy dose and change in V/Q as visualised V/Q PET/CT.<sup>9,10</sup> We have shown strong correlations between V/Q PET/CT functional volumes and pulmonary function test parameters.<sup>11</sup>

Planning studies conducted on participants in the observational GalliPET clinical trial have shown feasibility of radiation therapy treatment planning personalised to an individual's lung functional distribution; it has been demonstrated that integrating V/Q PET/CT information in radiation therapy planning can significantly reduce dose to functional lung.<sup>12,13</sup> Systematic review of the literature has demonstrated reductions in functional lung dose can be achieved with the mean functional volume receiving 20 Gy reduced by: 4.42% (95% CI 1.66% to 7.18%) for perfusion, 4.41% (95% CI 2.37% to 6.45%) for ventilation and 4.19% (95% CI 2.34% to 6.04%) overall when plans were optimised based on functional lung imaging.<sup>14</sup> The mean functional lung dose was reduced by: 1.98 Gy (0.57: 3.39) for perfusion, 2.63 Gy (0.14: 5.12) for ventilation and 2.18 Gy (1.09: 3.26) overall when plans were optimised using functional lung imaging.<sup>14</sup>

### Advances in radiation therapy planning

This functional map of lung can be integrated into volumetric modulated arc therapy (VMAT) advanced radiation therapy planning which can optimise radiation planning to avoid functional regions of lung. A number of studies have demonstrated improved dosimetry compared with other radiation therapy techniques for NSCLC.<sup>15</sup> VMAT may enable safe dose escalation above the standard dose of 60 Gy with accurate normal tissue definition, motion management and functional avoidance. Another advance to VMAT planning is the introduction of more advanced techniques such as the use of non-coplanar arcs. This has been shown to significantly decrease heart dose by 20%–30% in patients with lower lobe tumours treated with 74 Gy in 37 fractions.<sup>16</sup>

### Radiobiological basis for dose escalation

74 Gy in 37 fractions at 2 Gy per fraction has been established as the maximum tolerated safe dose in multiple phase 1/2 dose escalation studies.<sup>17</sup> This was used as the basis for the phase 3 trial, RTOG 0617.<sup>2</sup> This demonstrated inferior local control and worse survival in the dose escalation arm.<sup>2,18</sup> Further analysis of the RTOG 0617 trial suggests that worse outcomes may relate to increased dose to organs at risk, especially the heart which may be able to be reduced with advanced planning techniques and a smaller volume being irradiated at a higher dose using a simultaneous-integrated boost technique.<sup>5,18</sup> With the current standard of care dose of 60 Gy mediastinal nodal failure is rare.<sup>19</sup> Therefore, there is renewed interest in escalating dose to the primary tumour which is a common site of failure while treating the nodal volumes to a standard dose of 60 Gy.<sup>20</sup> As mediastinal nodes are centrally located, maintaining a standard dose to these regions has the added benefit of not increasing dose to the central organs at risk such as the heart, oesophagus and proximal bronchial tree. Further analysis of dose escalation trials suggest there may be an overall survival benefit to a dose escalated approach if it can be delivered without treatment prolongation.<sup>21</sup> This form of dose escalation has not been tested with a consistent manner using advanced radiation therapy planning techniques.

### METHODS AND ANALYSIS

This is a prospective single-arm interventional clinical trial assessing the technical feasibility of functionally adapted lung radiation therapy using V/Q PET/CT imaging and VMAT planning. The primary intervention is VMAT radiation therapy optimised to avoid regions of functional lung delivered to a total dose of 60 Gy in 30 fractions to the primary and nodal planning target volume. A simultaneous integrated boost will be delivered to the primary tumour to a total dose of 69 Gy in 30 fractions. The trial schema is demonstrated in figure 1. The trial plans to recruit a total of 20 patients over two tertiary teaching hospitals in Melbourne, Australia.

#### Inclusion criteria

- ▶ Age ≥18 years.
- ▶ Informed consent documented and consent form signed.
- ▶ Histologically or cytologically confirmed NSCLC.
- ▶ ECOG performance status 0–2 within 2 weeks prior to registration.
- ▶ Locally advanced disease (stage IIIA, IIIB, IIIC AJCC, eighth ed.) as confirmed on staging <sup>18</sup>F-fluorodeoxyglucose (FDG)-PET/CT with no evidence of metastatic intracranial disease on CT brain with contrast or MRI.
- ▶ Planned for treatment with curative intent.

#### Exclusion criteria

- ▶ Participant is not able to tolerate supine position for imaging.

- ▶ If history of a prior extrathoracic invasive malignancy (except non-melanomatous skin cancer) must be free from recurrence for a minimum of 3 years at the time of registration.
- ▶ Prior radiation therapy to the lungs or mediastinum.
- ▶ Prior known history of interstitial lung disease.

### Trial objectives

The primary objective of this study is to assess the technical feasibility of the delivery of personalised functional lung radiation therapy using V/Q PET/CT. This study will be considered feasible if all criteria defined below are achieved for  $\geq 15$  out of 20 patients.

Feasibility will be considered to have been achieved for a given patient if all of the following criteria are met when functional plans are compared with conventional anatomical plans: (A) Reduction in mean functional lung dose of  $\geq 2$  Gy and functional lung volume receiving 20 Gy of  $\geq 4\%$ ; (B) Mean heart dose is  $\leq 30$  Gy and relative heart volume receiving 50 Gy is  $< 25\%$ .

The secondary objectives are:

1. To determine the incidence of grade  $\geq 2$  clinical or radiological pneumonitis after high dose functionally adapted radiation therapy.
2. To determine the incidence of grade  $\geq 2$  acute and late toxicities.
3. To quantify regional ventilation loss and regional perfusion loss on post treatment V/Q PET/CT following functionally adapted lung radiation therapy and its relationship to spirometry and exercise tolerance.
4. To assess the relationships of cytokine release in patient's plasma with grade  $\geq 2$  radiation pneumonitis.
5. To assess the associations between:
  - a. Ventilation PET/CT with inhale/exhale CT ventilation.
  - b. Perfusion PET/CT with dual energy CT iodine mapping (a surrogate for pulmonary perfusion).

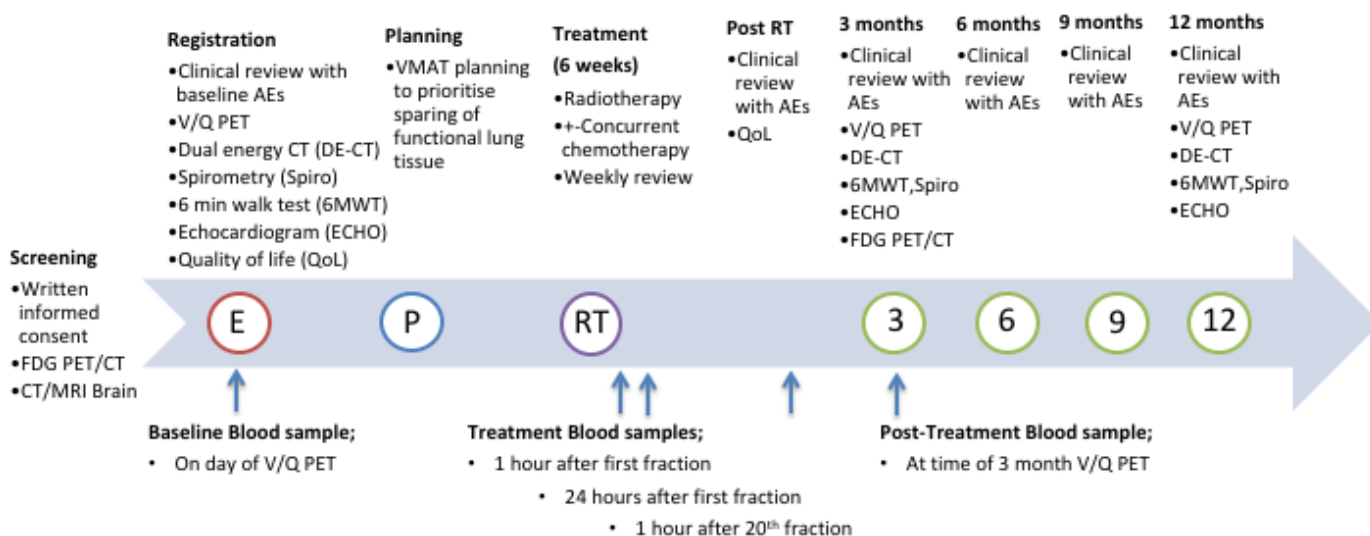
6. To assess patient reported quality of life outcomes using the FACT-L quality of life questionnaire.
7. To assess incidence of complete metabolic response 3-month post-treatment FDG-PET/CT.
8. To assess progression-free survival at 12 months following completion of trial radiation therapy (defined by RECIST V.1.1).
9. To assess overall survival at 12 months following completion of trial radiation therapy.

The exploratory objectives are:

1. To assess the feasibility of conducting a radiation induced lymphocyte apoptosis assay.
2. To investigate the utility of mid-treatment cardiac biomarker testing and pretreatment coronary calcium scoring to predict patients at greater risk of radiation induced cardiac toxicity.
3. To correlate primary and nodal disease metabolic parameters seen on pretreatment and post-treatment FDG-PET/CT with dual energy CT iodine quantification.
4. To assess circulating tumour-DNA levels as a predictor of treatment response.

### V/Q PET/CT procedure

The radiopharmaceuticals used in this study will be synthesised onsite by a qualified radio pharmacist using methods we have previously validated by our group.<sup>7 10</sup>  $^{68}\text{Ga}$  will be eluted from our  $^{68}\text{Ge}/^{68}\text{Ga}$  generator and used to label the appropriate precursor.  $^{68}\text{Ga}$ -Galligas is prepared using a Technegas generator except that the radionuclide technetium-99m is replaced with gallium-68 in the carbon crucible inserted into the Technegas synthesis unit.  $^{68}\text{Ga}$ -MAA is prepared as follows: A commercially available kit of MAA is washed three times with sterile milli-Q water dispensed into 1 mL aliquots with each aliquot containing MAA particles of between 250 and 700 thousand particles. Gallium-68 obtained



**Figure 1** Demonstrates the trial schema from screening to the final assessment at 12 months post-treatment. AEs, adverse events; FDG, fluorodeoxyglucose; PET, positron emission tomography; RT, radiation therapy; VMAT, Volumetric Modulated Arc Therapy; V/Q, ventilation and perfusion.

from the generator is buffered with acetate buffer to pH 6–7 before adding to the MAA aliquot. The suspension mixture is allowed to incubate for 1 min at 90°C after the addition of radioactivity for the radiolabeling process. Quality control tests was performed in accordance with the British Pharmacopoeia for radiolabelled MAA before the compound is released for clinical use.

The methodology of the V/Q PET/CT will be as follows:

1. A peripheral intravenous catheter is installed in the arm.
2. Participant inhales approximately 5 MBq of <sup>68</sup>Ga-Galligas, in semi-supine position, using the same technique as for Technegas.
3. A chest 4D-CT acquisition is performed (140 kVp, 30–40 mA, axial scan time is breathing period +1 s).
4. Lung ventilation 3D list-mode respiratory gated PET acquisition is started (2–3 bed positions, 5 min per bed position). This acquisition will be reconstructed as both a respiratory gated and ungated scan.
5. Without moving, approximately 20–40 MBq <sup>68</sup>Ga-MAA is injected intravenously, as a bolus, via the catheter. The syringe is then flushed with normal saline.
6. The lung perfusion 3D list-mode respiratory gated PET acquisition is started (2–3 bed positions, 5 min per bed position, exactly the same bed positions as for the ventilation study). This acquisition will be reconstructed as both a gated and ungated scan.

### Personalised functional adapted VMAT radiation therapy

#### Technical description

Treatment planning will be done using the Varian Medical Systems, Palo Alto, California, Eclipse V.15.5 computerised radiation therapy planning system. At least two VMAT arcs will be used to deliver the radiation therapy. The 360° arcs are to be avoided to minimise dose to the contralateral lung. It is expected individual arc length will typically be between 180° and 240°.

#### Radiation therapy volumes

Target volumes will be defined as per standard practice including the primary tumour and nodal gross tumour volumes (GTV), internal target volumes (ITV) and planning target volumes (PTV). GTV incorporating respiratory motion on 4D CT, the internal gross tumour volume (IGTV) will be contoured for the primary tumour. ITV as defined by ICRU70 will be used to take into account tumour movement through respiration and a margin for subclinical spread.<sup>22</sup> Target delineation and margins applied to primary tumour and nodal volumes are as per institutional protocol including mandatory use of 4D CT, FDG-PET/CT fusion and diagnostic contrast enhanced CT.

**Boost volume definition:** The proximal bronchial tree will have an isotropic 3mm PRV expansion named proximal bronchial tree PRV. The boost volume (IGTV\_6900) will be given to the IGTV of the primary tumour alone minus the proximal bronchial tree PRV. Normal tissue contouring will follow the RTOG 1106 contouring atlas.<sup>23</sup>

### Functional lung volumes

Nuclear medicine physicians in conjunction with the radiation oncologists will define visually adapted functional lung subvolumes. The definitions and description of each functional lung grouping are described below. A 30% threshold was determined to separate regions of lung with higher potential function. On meta-analysis, this threshold was the most common threshold used when determining functional lung sub-volumes and similar to previously published thresholds using VQ PET.<sup>14 24</sup>

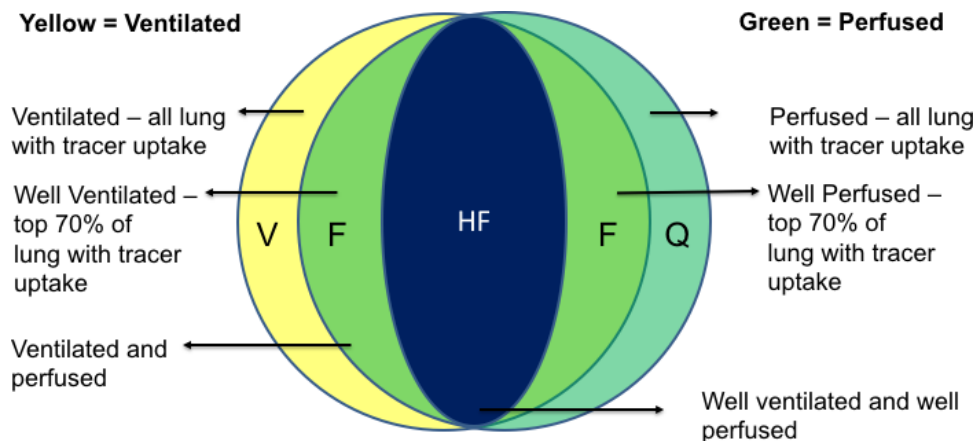
Name (full)	Short name	Description
Perfused	Q Lung	Any Lung parenchyma containing <sup>68</sup> Ga-MAA contoured using a visually adapted threshold that is confirmed by a physician.
Well Perfused	WQ Lung	Contour defined as <sup>68</sup> Ga-MAA uptake greater than 30% of max.
Ventilated	Vent Lung	Any Lung parenchyma containing Galligas contoured using a visually adapted threshold that is confirmed by a physician. If there was significant clumping of the Galligas in the central airways was observed this was excluding activity four SD above the mean <sup>25</sup>
Well Ventilated	WVent Lung	Contour defined as Galligas uptake greater than 30% of max.

Galligas, <sup>68</sup>Ga-carbon ultrafine aerosols; MAA, macroaggregates of human albumin.

These volumes are imported as DICOM structures into Eclipse. After visual verification, the radiation oncologist then uses these to generate the following optimisation structures. A graphical description of the components of all functional lung volumes is provided in figure 2.

Optimisation prioritisation	Name (full)	Name	Description
1	High functioning	Lung HF	Intersection of WVent lung and WQ lung, excluding PTV
2	Functioning	Lung F	Intersection of vent and Q contours excluding lung HF excluding PTV
3	Perfused	Lung P	Any lung parenchyma containing <sup>68</sup> Ga-macroaggregated albumin contoured using a visually adapted threshold that is confirmed by a physician. Excluding lung HF, lung F, excluding PTV
4	Ventilated	Lung V	Any lung parenchyma containing Galligas contoured using a visually adapted threshold that is confirmed by a physician. Excluding lung HF, lung F, lung P, excluding PTV

The expected outcome of these optimisation objectives is demonstrated in figure 3 where axial and coronal slices demonstrate the 20 Gy isodose line. In the functionally adapted plan there is less of the 20 Gy isodose line overlapping with high functioning and functioning lung segments.



**Figure 2** Demonstrates a spatial description of each of the lung subvolumes created by integrating functional information from the V/Q PET/CT is used to create optimisation functional lung subvolumes which are used in VMAT radiation therapy planning. PET, positron emission tomography; VMAT, Volumetric Modulated Arc Therapy; V/Q, ventilation and perfusion.

### Treatment planning

The investigational treatment will be prescribed ensuring that 98% of the 60Gy PTV is covered by 98% of the dose. The 69Gy in 30 fractions (9Gy) boost sub-volume (IGTV\_6900) will aim to achieve 95% of the IGTV receives 100% of the boost dose (D95=100%). The maximum dose to PTV (PTV max) must be contained within the IGTV. This boost dose will be reduced if organ at risk planning constraints cannot be met. This will be at the discretion of the treating clinician. Dose constraints to organs at risk are described in [table 1](#). If dose reduction is necessary, this event should be recorded and the D95% reported. Non-coplanar arcs may be considered if technically feasible and if this improves normal tissue sparing. It is expected that majority of patients will receive concurrent cytotoxic chemotherapy; the treating medical oncologist will determine the agents. Acceptable chemotherapy regimens include weekly carboplatin and paclitaxel and 3weekly cisplatin and etoposide in accordance with Australian

guidelines.<sup>26 27</sup> Appropriate patients will also be offered adjuvant immunotherapy.<sup>28</sup> This is not mandated by this study protocol.

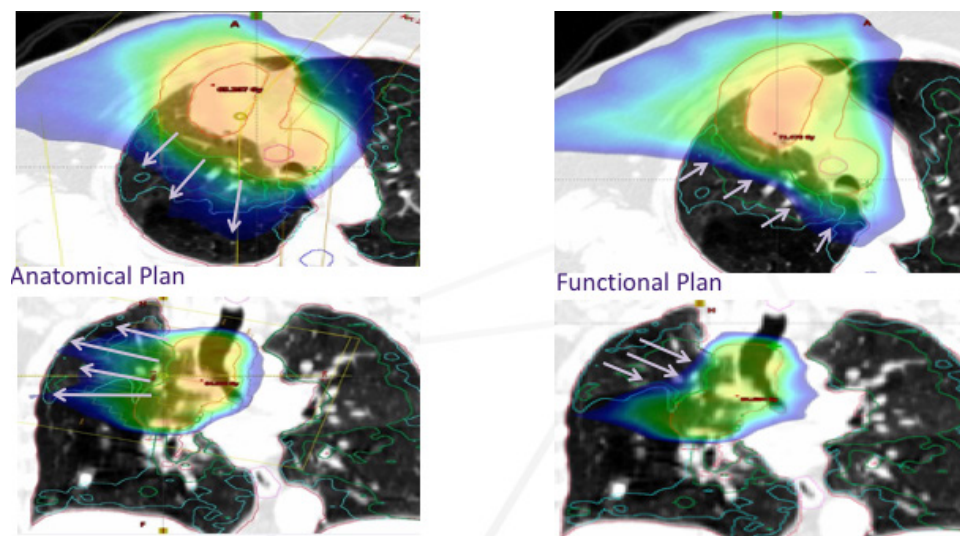
### Treatment delivery

All patients will have a pretreatment dosimetric quality assurance according to departmental VMAT quality assurance guidelines. Daily Cone Beam CT (CBCT) will be performed with online soft tissue matching will ensure that the target is within the PTV.

### Statistical considerations

The study sample size is pragmatic and based on the clinically relevant number of patients needed to determine the technical feasibility of the functional lung sparing VMAT radiation therapy technique. [Table 2](#) demonstrates the 95% CIs for different scenarios of feasibility rates.

The study follow-up duration was designed to be pragmatic for a feasibility study while having enough follow-up



**Figure 3** The arrows demonstrate the 20Gy isodose line in radiation therapy plans optimised with conventional (anatomically based) lung constraints (left) and integrating functional information from V/Q PET/CT (right). PET, positron emission tomography; V/Q, ventilation and perfusion.

**Table 1** This table demonstrates the normal tissue constraints used in the radiation therapy planning process

Structure	Metric	Per protocol	Source	
Bony spinal canal	Max dose 0.03cc	≤50 Gy	13	
Oesophagus	Max dose 0.03cc	<63 Gy	13	
	Mean	<34 Gy	13	
Heart	V40	<30%		
	V50	<25%	33	
	Mean	<20 Gy	5	
	Max dose 0.03cc	<70 Gy	13	
Brachial plexus	Max dose 0.03cc	<63 Gy	13	
Proximal bronchial tree	Max dose 1.0cc	<64.5 Gy	3	
Great vessels (normal)	Max dose 0.03cc	<80 Gy	34	
Great vessels (tumour involved)	Max dose 0.03cc	<70 Gy	34	
Lung dose constraints				
Structure	Metric	Per protocol	Definition	Source
Lungs (anatomic)	Mean	<20 Gy	Mean dose to the whole anatomic lung	13
Left+right lung-IGTV	V30	<30%	Volume of structure (%) receiving ≥30 Gy	13 35
	V20	<35%	Volume of structure (%) receiving ≥20 Gy	13 35
	V5	<66%	Volume of structure receiving ≥5 Gy	13 35

duration to detect clinically significant toxicity. In the context of NSCLC radiation therapy, late cardiac and lung toxicity typically presents within a 12-month time period. Our recent systematic review showed that functional lung imaging dose–response relationships plateau around 6–12 months post-treatment.<sup>14 29</sup>

Main analysis of the primary endpoint will be performed after all patients have been registered and completed their 3-month follow-up assessment. A final analysis will be performed at the completion of the study, which will be 12 months after the final patient completes treatment.

### Monitoring programmes

Prior to commencement of radiation therapy, contours undergo peer review and sign off by a qualified radiation oncologist. All radiation therapy plans undergo review by a senior radiation therapist and senior medical physicist. Pretreatment dosimetric quality assurance is required prior to delivery of the first fraction.

All trial personnel are required to be qualified for their designated role with suitable training provided and credentials certified by the principal investigator. On treatment, weekly clinical reviews are performed by a credentialed physician. At these assessments, offline CBCT assessment is performed to ensure adequate coverage of target volumes and review organs at risk. Post-treatment assessments must also be performed by a credentialed physician.

### Independent trial monitoring

An independent data monitoring committee will be appointed and will convene with the purpose of:

- ▶ Assessing quality issues related to radiation therapy.
- ▶ Assessing the conduct and progress of the trial—accrual, non-eligibility, treatment toxicity and serious adverse events.

SAEs will be forwarded to the data monitoring committee. If three SAEs are recorded during the trial,

**Table 2** This demonstrates shows the exact 95% CIs for different scenarios of feasibility rates

No of feasible cases	Feasibility rate, %	Exact 95% CIs for rate estimate	
		Lower limit, %	Upper limit, %
15	75	51	91
16	80	56	94
17	85	62	97
18	90	68	99
19	95	75	100
20	100	83	100

the data monitoring committee must convene and determine the causal link between SAEs and the research. An assessment must be made regarding early termination of the trial, and recommendations forwarded to the Peter MacCallum Ethics Committee. The data monitoring committee should also convene at the completion of the trial to assess safety of this project.

### Data collection and record retention

All data will be stored in reidentifiable form on Research Electronic Data Capture in a password-protected computer database.<sup>30</sup> Any paper data will be stored in a locked filing cabinet in a secure building. Data will be stored for a minimum of 7 years after publication of study results, in accordance with Institutional guidelines and the Australian Code for the Responsible Conduct of Research. Patient confidentiality will be maintained at all times.

### Ethics and dissemination

This study was approved by the Peter MacCallum Human Research Ethics Committee (HREC/18/PMCC/23). Prior studies have demonstrated safety of V/Q PET/CT.<sup>10</sup> The stochastic and deterministic risks of radiation doses used in trial investigations and treatment have been carefully assessed and detailed in the trial participant information and consent form. The study results will be published in peer-reviewed journals.

## DISCUSSION

Advanced techniques such as VMAT functionally adapted radiation therapy may enable safe moderate dose escalation without treatment prolongation with an aim of improving local control and concurrently decreasing treatment related toxicity. The long-term results from the RTOG 0617 trial demonstrated worse survival in the dose-escalation arm. Long-term follow-up suggests this mechanism is primarily through radiation injury to the central structures of the heart and oesophagus.<sup>18</sup> Advanced imaging and VMAT planning allow these structures to be precisely defined and using strict normal tissue constraints moderate dose escalation to the primary tumour alone may enable safe dose escalation without treatment prolongation.

The paradigm for the management of stage III lung cancer has changed significantly with the introduction of consolidation immunotherapy. Patients who receive consolidation durvalumab in the PACIFIC trial demonstrated an improvement in 3-year overall survival to 57.0% compared with 43.5% in the group randomised to placebo.<sup>28</sup> Although this treatment has improved survival in this patient cohort, additional toxicities involved with immunotherapy have been documented with pneumonitis occurring more frequently in patients treated with immunotherapy.<sup>31</sup> Prior radiation to the lungs is a known risk factor for this toxicity.<sup>32</sup> Advanced functional imaging with V/Q PET/CT and planning to avoid highly

functional regions of lung may minimise this risk of toxicity.

Currently, little is understood about why certain patients experience radiation induced toxicity. The pretreatment, mid-treatment and post-treatment imaging and blood biomarkers being investigated in this trial in an exploratory manner may provide useful hypotheses to enable further research into better understanding treatment related toxicity. If feasible, this technique will allow a prospective randomised trial to assess the clinical benefits of functional lung avoidance radiation therapy.

### Author affiliations

<sup>1</sup>Department of Radiation Oncology, Peter MacCallum Cancer Centre, Melbourne, Victoria, Australia

<sup>2</sup>Sir Peter MacCallum Department of Oncology, University of Melbourne, Melbourne, Victoria, Australia

<sup>3</sup>Department of Physical Sciences, Peter MacCallum Cancer Centre, Melbourne, Victoria, Australia

<sup>4</sup>Centre for Medical Radiation Physics, University of Wollongong, Wollongong, New South Wales, Australia

<sup>5</sup>Molecular Imaging and Therapeutic Nuclear Medicine, Cancer Imaging, Peter MacCallum Cancer Centre, Melbourne, Victoria, Australia

<sup>6</sup>School of Medicine, Deakin University, Geelong, Victoria, Australia

<sup>7</sup>Department of Nuclear Medicine, Washington University School of Medicine, St Louis, Missouri, USA

<sup>8</sup>Centre for Biostatistics and Clinical Trials, Peter MacCallum Cancer Centre, Melbourne, Victoria, Australia

<sup>9</sup>Department of Radiology, Cancer Imaging, Peter MacCallum Cancer Centre, Melbourne, Victoria, Australia

<sup>10</sup>Department of Medicine, University of Melbourne, Melbourne, Victoria, Australia

<sup>11</sup>Department of Respiratory Medicine, Peter MacCallum Cancer Centre, Melbourne, Victoria, Australia

**Twitter** Nicholas Bucknell @NickWBucknell

**Acknowledgements** The authors would like to acknowledge the ongoing efforts of our study coordinator Lisa Selbie and the trials team lead by Dr Suzie Roache. We also acknowledge the interdepartmental collaboration between the departments of radiology, nuclear medicine, respiratory medicine and cardiology to facilitate performing multiple complex study measures in a single patient visit. We also acknowledge the ongoing research collaboration with Western Health and the Sunshine campus lead by Rebecca Height and the trials team in particular Angela Baugh and Heike Ranow.

**Contributors** NWB, SS, MH, NH, JC, DB, TK, OM, BB, RL, MB, AI, BW, PE and DS contributed to the initial conception and design of the study. SS, GH, MH, JC and NWB were instrumental in securing funding and departmental support for the project. NWB led the development of the initial study protocol, which SS, NH, DB, TK, OM, BB, RL, MB, AI, BW, JC, PJ, MM, KB and DS reviewed and provided feedback on. NWB drafted the protocol manuscript and all other authors gave critical feedback. All authors read and approved the final version of the manuscript and agree to be accountable for all aspects of the work.

**Funding** This work was supported by RANZCR grant number 2017/014, the Peter MacCallum Cancer Centre Foundation grant number 1709. NWB is the recipient of an Graduate Research Scholarship funded by the Australian Government. A Cancer Australia Priority-drive Collaborative Cancer Research Scheme Grant 2013, APP1060919, supported the development of V/Q PET/CT. This research was supported by the Cancer Trials Management Scheme Competitive Grants Programme, administered by Cancer Council Victoria.

**Competing interests** None declared.

**Patient and public involvement statement** Trial participant convenience, in particular, the number and timing of investigations were developed based on experiences and patient reports from our previous clinical trial.<sup>(9)</sup> Validated quality of life tools are performed before and after completion of treatment to enable assessment of meaningful measures of a patient's treatment experience.

**Patient consent for publication** Not required.



**Provenance and peer review** Not commissioned; externally peer reviewed.

**Supplemental material** This content has been supplied by the author(s). It has not been vetted by BMJ Publishing Group Limited (BMJ) and may not have been peer-reviewed. Any opinions or recommendations discussed are solely those of the author(s) and are not endorsed by BMJ. BMJ disclaims all liability and responsibility arising from any reliance placed on the content. Where the content includes any translated material, BMJ does not warrant the accuracy and reliability of the translations (including but not limited to local regulations, clinical guidelines, terminology, drug names and drug dosages), and is not responsible for any error and/or omissions arising from translation and adaptation or otherwise.

**Open access** This is an open access article distributed in accordance with the Creative Commons Attribution Non Commercial (CC BY-NC 4.0) license, which permits others to distribute, remix, adapt, build upon this work non-commercially, and license their derivative works on different terms, provided the original work is properly cited, appropriate credit is given, any changes made indicated, and the use is non-commercial. See: <http://creativecommons.org/licenses/by-nc/4.0/>.

#### ORCID iDs

Nicholas Bucknell <http://orcid.org/0000-0002-4831-9120>

Gerard Hanna <http://orcid.org/0000-0003-1003-5138>

#### REFERENCES

- Palma DA, Senan S, Tsujino K, *et al*. Predicting radiation pneumonitis after chemoradiation therapy for lung cancer: an international individual patient data meta-analysis. *Int J Radiat Oncol Biol Phys* 2013;85:444–50.
- Bradley JD, Hu C, Komaki RU, *et al*. Long-term results of RTOG 0617: a randomized phase 3 comparison of standard dose versus high dose conformal chemoradiation therapy +/- cetuximab for stage III NSCLC. *Int J Radiat Oncol Biol Phys* 2017;99:S105.
- Cannon DM, Mehta MP, Adkison JB, *et al*. Dose-limiting toxicity after hypofractionated dose-escalated radiotherapy in non-small-cell lung cancer. *J Clin Oncol* 2013;31:4343–8.
- Bradley JD, Paulus R, Komaki R, *et al*. Standard-dose versus high-dose conformal radiotherapy with concurrent and consolidation carboplatin plus paclitaxel with or without cetuximab for patients with stage IIIA or IIIB non-small-cell lung cancer (RTOG 0617): a randomised, two-by-two factorial phase 3 study. *Lancet Oncol* 2015;16:187–99.
- Wang K, Eblan MJ, Deal AM, *et al*. Cardiac toxicity after radiotherapy for stage III non-small-cell lung cancer: pooled analysis of dose-escalation trials delivering 70 to 90 Gy. *JCO* 2017;35:1387–94.
- Hofman MS, Beauregard J-M, Barber TW, *et al*. 68Ga PET/CT ventilation-perfusion imaging for pulmonary embolism: a pilot study with comparison to conventional scintigraphy. *J Nucl Med* 2011;52:1513–9.
- Callahan J, Hofman MS, Siva S, *et al*. High-resolution imaging of pulmonary ventilation and perfusion with 68Ga-VQ respiratory gated (4-d) PET/CT. *Eur J Nucl Med Mol Imaging* 2014;41:343–9.
- Le Roux P-Y, Hicks RJ, Siva S, *et al*. PET/CT lung ventilation and perfusion scanning using Galligas and Gallium-68-MAA. *Semin Nucl Med* 2019;49:71–81.
- Siva S, Callahan J, Kron T, *et al*. A prospective observational study of Gallium-68 ventilation and perfusion PET/CT during and after radiotherapy in patients with non-small cell lung cancer. *BMC Cancer* 2014;14:740.
- Siva S, Hardcastle N, Kron T, *et al*. Ventilation/Perfusion Positron Emission Tomography--Based Assessment of Radiation Injury to Lung. *Int J Radiat Oncol Biol Phys* 2015;93:408–17.
- Le Roux P-Y, Siva S, Steinfurt DP, *et al*. Correlation of 68Ga ventilation-perfusion PET/CT with pulmonary function test indices for assessing lung function. *J Nucl Med* 2015;56:1718–23.
- Siva S, Devereux T, Ball DL, *et al*. Ga-68 MAA perfusion 4d-PET/CT scanning allows for functional lung avoidance using conformal radiation therapy planning. *Technol Cancer Res Treat* 2016;15:114–21.
- Siva S, Thomas R, Callahan J, *et al*. High-resolution pulmonary ventilation and perfusion PET/CT allows for functionally adapted intensity modulated radiotherapy in lung cancer. *Radiother Oncol* 2015;115:157–62.
- Bucknell NW, Hardcastle N, Bressel M, *et al*. Functional lung imaging in radiation therapy for lung cancer: a systematic review and meta-analysis. *Radiother Oncol* 2018;129:196–208.
- Jiang X, Li T, Liu Y, *et al*. Planning analysis for locally advanced lung cancer: dosimetric and efficiency comparisons between intensity-modulated radiotherapy (IMRT), single-arc/partial-arc volumetric modulated Arc therapy (SA/PA-VMAT). *Radiat Oncol* 2011;6:140.
- Chapet O, Khodri M, Jalade P, *et al*. Potential benefits of using non coplanar field and intensity modulated radiation therapy to preserve the heart in irradiation of lung tumors in the middle and lower lobes. *Radiother Oncol* 2006;80:333–40.
- Socinski MA, Blackstock AW, Bogart JA, *et al*. Randomized phase II trial of induction chemotherapy followed by concurrent chemotherapy and dose-escalated thoracic conformal radiotherapy (74 Gy) in stage III non-small-cell lung cancer: CALGB 30105. *J Clin Oncol* 2008;26:2457–63.
- Bradley JD, Hu C, Komaki RR, *et al*. Long-term results of NRG oncology RTOG 0617: Standard- versus high-dose chemoradiotherapy with or without cetuximab for unresectable stage III non-small-cell lung cancer. *J Clin Oncol* 2020;38:706–14.
- Garg S, Gielda BT, Kiel K, *et al*. Patterns of locoregional failure in stage III non-small cell lung cancer treated with definitive chemoradiation therapy. *Pract Radiat Oncol* 2014;4:342–8.
- Ma L, Men Y, Feng L, *et al*. A current review of dose-escalated radiotherapy in locally advanced non-small cell lung cancer. *Radiol Oncol* 2019;53:6–14.
- Kong F-MS, Zhao J, Wang J, *et al*. Radiation dose effect in locally advanced non-small cell lung cancer. *J Thorac Dis* 2014;6:336–47.
- Wambersie A, Landberg T. *ICRU report 62: prescribing, recording, and reporting photon beam therapy (supplement to ICRU report 50*. Bethesda, MD: International Commission on Radiation Units and Measurements, 1999.
- Kong F-MS, Ritter T, Quint DJ, *et al*. Consideration of dose limits for organs at risk of thoracic radiotherapy: atlas for lung, proximal bronchial tree, esophagus, spinal cord, ribs, and brachial plexus. *Int J Radiat Oncol Biol Phys* 2011;81:1442–57.
- Le Roux P-Y, Siva S, Callahan J, *et al*. Automatic delineation of functional lung volumes with <sup>68</sup>Ga-ventilation/perfusion PET/CT. *EJNMMI Res* 2017;7:82.
- Kipritidis J, Siva S, Hofman MS, *et al*. Validating and improving CT ventilation imaging by correlating with ventilation 4D-PET/CT using 68Ga-labeled nanoparticles. *Med Phys* 2014;41:011910.
- Cancer Institute NSW. eviQ cancer treatments online protocol: non small cell lung cancer locally advanced definitive carboplatin and paclitaxel chemoradiation, 2018. Available: [www.eviq.org.au/medical-oncology/respiratory/non-small-cell-lung-cancer/1436-nsclc-locally-advanced-definitive-carboplatin](http://www.eviq.org.au/medical-oncology/respiratory/non-small-cell-lung-cancer/1436-nsclc-locally-advanced-definitive-carboplatin)
- Cancer Institute NSW. eviQ cancer treatments online protocol: non small cell lung cancer locally advanced definitive cisplatin and etoposide chemoradiation, 2020. Available: [www.eviq.org.au/medical-oncology/respiratory/non-small-cell-lung-cancer/379-nsclc-locally-advanced-definitive-cisplatin-an](http://www.eviq.org.au/medical-oncology/respiratory/non-small-cell-lung-cancer/379-nsclc-locally-advanced-definitive-cisplatin-an)
- Gray JE, Villegas A, Daniel D, *et al*. Three-year overall survival with Durvalumab after chemoradiotherapy in stage III NSCLC-Update from Pacific. *J Thorac Oncol* 2020;15:288–93.
- Zhang J, Ma J, Zhou S, *et al*. Radiation-Induced reductions in regional lung perfusion: 0.1-12 year data from a prospective clinical study. *Int J Radiat Oncol Biol Phys* 2010;76:425–32.
- Harris PA, Taylor R, Thielke R, *et al*. Research electronic data capture (REDCap)—a metadata-driven methodology and workflow process for providing translational research informatics support. *J Biomed Inform* 2009;42:377–81.
- Naidoo J, Nishino M, Patel SP, *et al*. Immune-related pneumonitis after chemoradiotherapy and subsequent immune checkpoint blockade in unresectable stage III non-small-cell lung cancer. *Clin Lung Cancer* 2020;21:e435–44.
- Manapov F, Roengvoraphoj O, Dantes M, *et al*. Pneumonitis in irradiated lungs after nivolumab: a brief communication and review of the literature. *J Immunother* 2018;41:96–9.
- Speirs CK, DeWees TA, Rehman S, *et al*. Heart dose is an independent Dosimetric predictor of overall survival in locally advanced non-small cell lung cancer. *J Thorac Oncol* 2017;12:293–301.
- RTOG 1106/ACRIN 6697, randomized phase II trial of individualized adaptive radiotherapy using during treatment FDG-PET/CT and modern technology in locally advanced non-small lung cancer (NSCLC), 2016RTOG. Available: <https://www.nrgoncology.org/Clinical-Trials/Protocol/rtog-1106?filter=rtog-1106> [Accessed 04/2020].
- Vinod S, Choong C, Vial P, *et al*. Lung organ-at-risk volumes: a survey of practice and the need for a consistent definition in the 4DCT era. *J Med Imaging Radiat Oncol* 2020;64:120–6.