

Electronic Supplementary Information for Single-Layer Graphene Nanosheets with Controlled Grafting of Polymer Chains

Ming Fang,^a Kaigang Wang,^a Hongbin Lu,^{*a} Yuliang Yang^a and Steven Nutt^b

^a The Key Laboratory of Molecular Engineering of Polymers of Ministry of Education and Department of Macromolecular Science, Fudan University, Shanghai 200433, China. Fax: 86-21-55664589; Tel:

86-21-55664589; E-mail: hongbinl@fudan.edu.cn

^b Department of Chemical Engineering and Materials Science, University of Southern California, Los Angeles, CA 90089-0241, United States.

1. Molecular sizes of grafted PS and free PS.

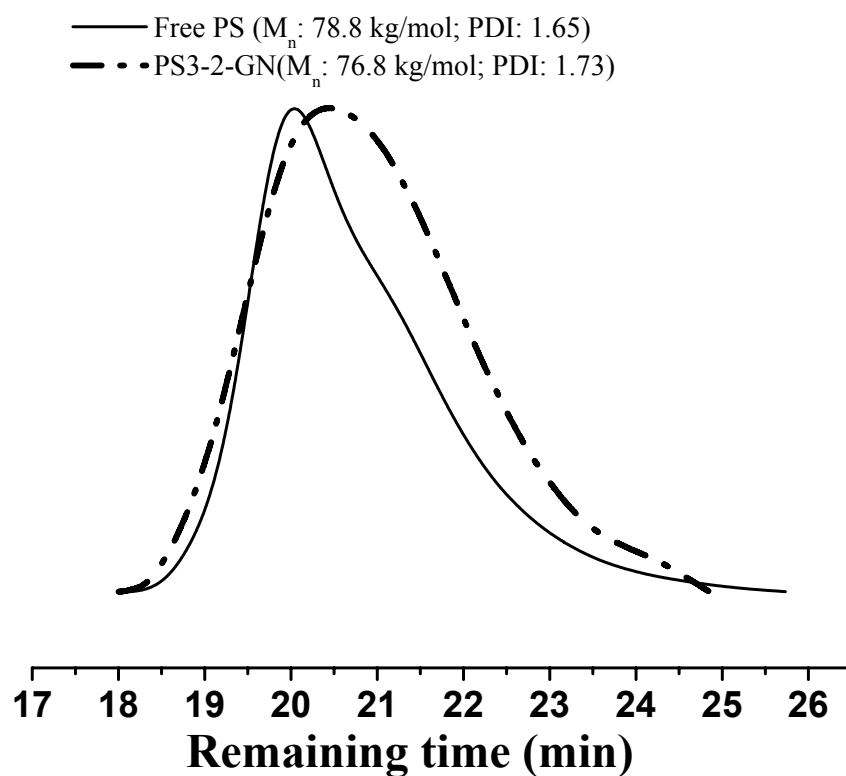


Figure S1 GPC results for the PS cleaved from graphene sheets and free PS obtained simultaneously during the in-situ polymerization of styrene on graphene sheets.