

RESEARCH ARTICLE

Open Access

Site-Specific Mobilization of Vinyl Chloride Respiration Islands by a Mechanism Common in *Dehalococcoides*

Paul J McMurdie¹, Laura A Hug², Elizabeth A Edwards^{2,3}, Susan Holmes⁴ and Alfred M Spormann^{1,5*}

Abstract

Background: Vinyl chloride is a widespread groundwater pollutant and Group 1 carcinogen. A previous comparative genomic analysis revealed that the vinyl chloride reductase operon, *vcrABC*, of *Dehalococcoides* sp. strain VS is embedded in a horizontally-acquired genomic island that integrated at the single-copy tmRNA gene, *ssrA*.

Results: We targeted conserved positions in available genomic islands to amplify and sequence four additional *vcrABC*-containing genomic islands from previously-unsequenced vinyl chloride respiring *Dehalococcoides* enrichments. We identified a total of 31 *ssrA*-specific genomic islands from *Dehalococcoides* genomic data, accounting for 47 reductive dehalogenase homologous genes and many other non-core genes. Sixteen of these genomic islands contain a syntenic module of integration-associated genes located adjacent to the predicted site of integration, and among these islands, eight contain *vcrABC* as genetic 'cargo'. These eight *vcrABC*-containing genomic islands are syntenic across their ~12 kbp length, but have two phylogenetically discordant segments that unambiguously differentiate the integration module from the *vcrABC* cargo. Using available *Dehalococcoides* phylogenomic data we estimate that these *ssrA*-specific genomic islands are at least as old as the *Dehalococcoides* group itself, which in turn is much older than human civilization.

Conclusions: The *vcrABC*-containing genomic islands are a recently-acquired subset of a diverse collection of *ssrA*-specific mobile elements that are a major contributor to strain-level diversity in *Dehalococcoides*, and may have been throughout its evolution. The high similarity between *vcrABC* sequences is quantitatively consistent with recent horizontal acquisition driven by ~100 years of industrial pollution with chlorinated ethenes.

Background

Chlorinated ethene congeners ("chloroethenes") are among the most frequently detected groundwater contaminants in the United States of America and other industrialized countries [1]. Chloroethenes are often incompletely dechlorinated by bacteria in these anoxic environments, leading to an accumulation of vinyl chloride, a Group 1 human carcinogen [2,3]. Growth-linked reductive dechlorination of vinyl chloride is critical to avoid its accumulation and achieve *in situ* remediation of chloroethenes [1], but vinyl chloride respiration has only been observed in certain strains of *Dehalococcoides* [4,5]. *Dehalococcoides* is a genus-level phylogenetic

group within the *Chloroflexi* phylum [6]. *Dehalococcoides* are strictly anaerobic bacteria that gain metabolic energy exclusively via the oxidation of H₂ coupled to the reduction of organohalide compounds [7-9]. This catabolic reductive dehalogenation of organohalide compounds ("organohalide respiration") is catalyzed in *Dehalococcoides* by heterodimeric, membrane-bound enzymes called "reductive dehalogenases" [10]. Reductive dehalogenases typically contain corrinoid and iron-sulfur clusters as cofactors, and have varied substrate ranges that do not necessarily overlap [10,11].

The catalytic subunit of reductive dehalogenases is encoded in *Dehalococcoides* by reductive dehalogenase homologous genes (*rdhA*). *Dehalococcoides* possess as many as 36 *rdhA* per genome [9], but few of the encoded enzymes, RdhA, have been purified and characterized *in vitro*. Many *rdhA* are co-expressed [12-16], further

* Correspondence: spormann@stanford.edu

¹Department of Civil and Environmental Engineering, Stanford University, Stanford, California, USA

Full list of author information is available at the end of the article

confounding a determination of the RdhA responsible for catalysis of an observed reductive dehalogenation activity. The only reductive dehalogenase shown to catabolically reduce vinyl chloride, VcrA, was purified from a highly-enriched vinyl chloride respiring culture dominated by *Dehalococcoides* strain VS [5]. The operon encoding VcrA, *vcrABC*, was identified by reverse genetics, and highly-similar *vcrA* were detected in other vinyl chloride respiring *Dehalococcoides* cultures [5,17,18]. Primers targeting *vcrA* are now commonly used as an indicator of attenuation potential at vinyl chloride contaminated sites ([5], U.S. Patent Application 20090176210). A putative VC reductase operon, *bvcAB*, shares only limited similarity with *vcrAB* and is present in a different VC respiring *Dehalococcoides* strain, BAV1, which does not contain *vcrABC* [19].

Although *Dehalococcoides* are the only known microorganisms capable of vinyl chloride respiration, both *vcrA* and *bvcA* appear to be horizontally acquired [9]. Both *vcrA* and *bvcA* have a highly unusual, low %(G+C) codon bias that appears maladapted to *Dehalococcoides* genomes [20], and both are found within a low %(G+C) “genomic island” (GI) [21] that interrupts local gene synteny relative to other *Dehalococcoides* strains. In strain VS, this *vcrABC*-containing genomic island (*vcr*-GI) integrated at the *ssrA* locus, and as a result is flanked by *ssrA* and a 20 bp direct repeat of the *ssrA* 3' end [9]. *ssrA* is a single-copy gene essential in bacteria [22] encoding transfer messenger RNA (tmRNA), which plays a key role in maintaining the fidelity of protein synthesis [23]. Specific integration of genetic elements at *ssrA* is also common across many bacterial phyla, and often results in a direct repeat at the genomic island boundary opposite the site of integration [24]. In addition to the *vcr*-GI, over a dozen *ssrA* direct repeats were previously detected downstream of *ssrA* in *Dehalococcoides*, collocated with many strain-specific *rdhA* in a region of high genomic variability between *Dehalococcoides* strains [9]. To further understand the acquisition and dissemination of *vcrABC*, as well as the impact of *ssrA*-specific integration on *Dehalococcoides* genome dynamics, we determined the conserved features of *Dehalococcoides* *ssrA*-specific genomic islands (*ssrA*-GIs) from all publicly available genomes and metagenomes of *Dehalococcoides* cultures, including the recently-sequenced *Dehalococcoides* strain GT [17] and the metagenome sequences of the vinyl chloride respiring *Dehalococcoides* enrichment cultures KB-1 [25,26] and ANAS [27]. We also amplified and sequenced *ssrA*-GIs from the vinyl chloride respiring *Dehalococcoides* enrichment cultures Evanite (EV) [28], PM [28], WBC-2 [29], and WL [30] using primers designed to target either *vcr*-GIs specifically, or conserved features present in all available *Dehalococcoides* *ssrA*-GIs. Previous studies have implicated a subset of

rdhAB with horizontal gene acquisition, but evidence for the method of integration, mobilization, replication, and transfer is limited [31,32]. We describe here a family of putative *ssrA*-specific integrative and mobilizable elements [33] that share a conserved ‘integration module’ while also encoding a broad variety of putative and unknown functions, including reductive dehalogenation. The key conserved integrase encoded on these elements is a homolog of the CcrB family of site-specific serine recombinases that specifically integrate/excise the methicillin-resistance element “SCCmec” in *Staphylococcus aureus* [34]. Using a robust whole-genome phylogeny and several estimates for mutation rate, we estimate the age of the most recent common ancestor of contemporary *Dehalococcoides* strains, as well as the age of divergence for *Dehalococcoides* *ssrA*-GI integration module components.

Results

ssrA Genomic Islands in *Dehalococcoides*

The region downstream of *ssrA* in available *Dehalococcoides* (meta)genome sequences contains multiple tandem genomic islands that are primarily distinguished by their boundaries - *ssrA* or its 20 bp direct repeat - as well as disruption to local gene synteny and in many cases the presence of a characteristic cluster of integration-associated genes adjacent to the left edge (Figure 1). All direct repeats are located within 100 kbp downstream of *ssrA*, with varying numbers per strain and no duplicate genomic islands within any strain. These findings are consistent with *ssrA*-specific integration described for other bacteria [21,24], as well as a class of integrating and mobilizing elements that encode their own specific integration but do not replicate independently from the chromosome nor encode for conjugation [33]. From available *Dehalococcoides* genomic data (including this study) we have detected a total of 31 *ssrA*-GIs containing 47 *rdhA*, 75 hypothetical protein encoding genes, 2 putative complete CRISPR modules and arrays [35], as well as other genes; most of which are not believed to encode a core function and are present in only a subset of *Dehalococcoides* strains.

Sixteen of the identified *Dehalococcoides* *ssrA*-GIs contain an integration module comprised of 6 syntenic protein encoding genes oriented on the reverse strand and located adjacent to *attL* (in this context, *attL* and *attR* are the *ssrA* direct repeat sequence at the left or right boundary, respectively; Figure 1A).

Beginning from *attL*, the integration module contains genes that appear to encode (1) a 540 residue serine recombinase family putative site-specific integrase we call *Dehalococcoides* *ssrA*-specific integrase, DsiB (Figure 2); (2) a smaller (200aa) PinR (COG1961) homolog that also contains a serine recombinase catalytic domain (cd00338), DsiA; (3) a small (150aa) RecF

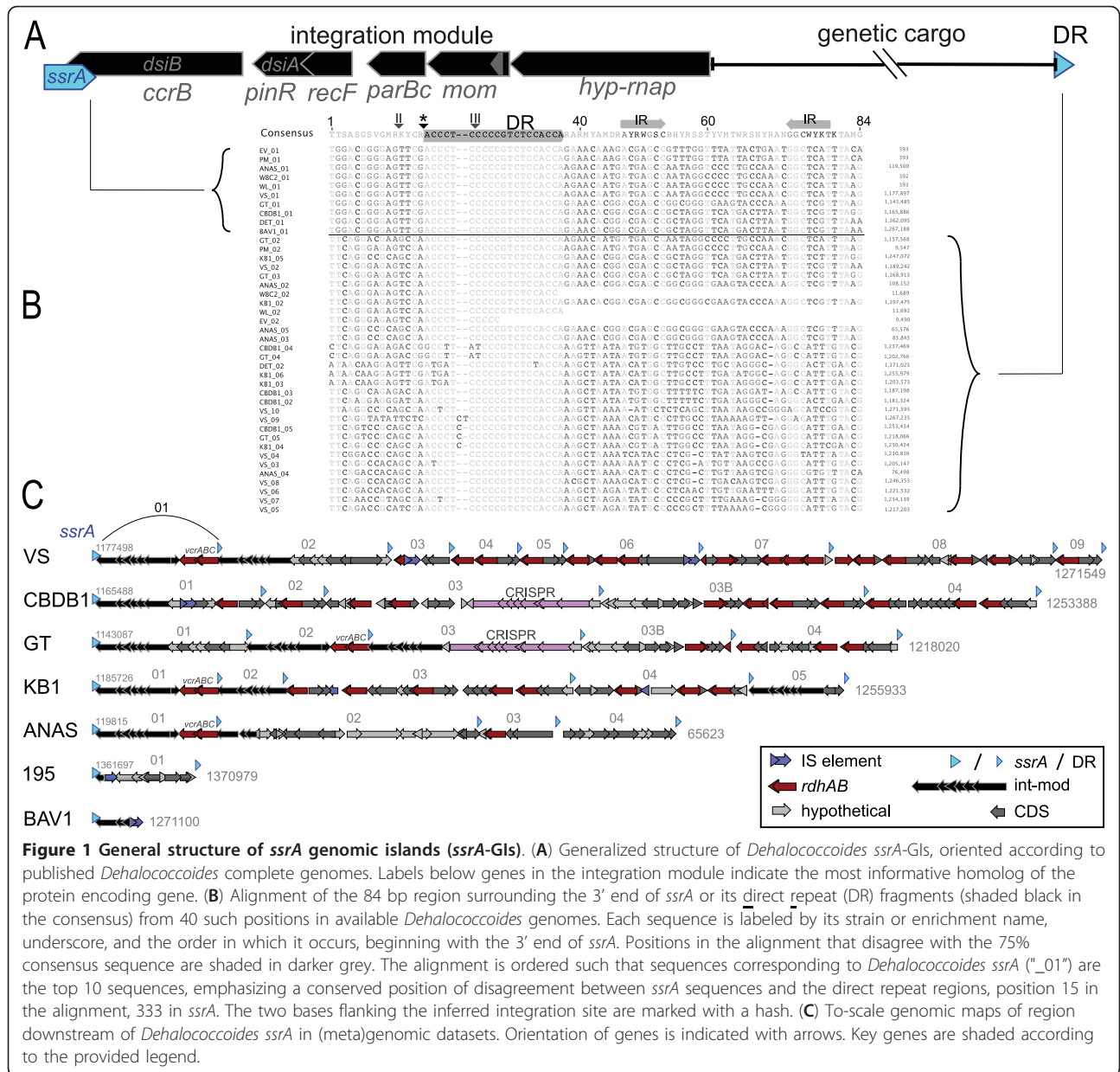
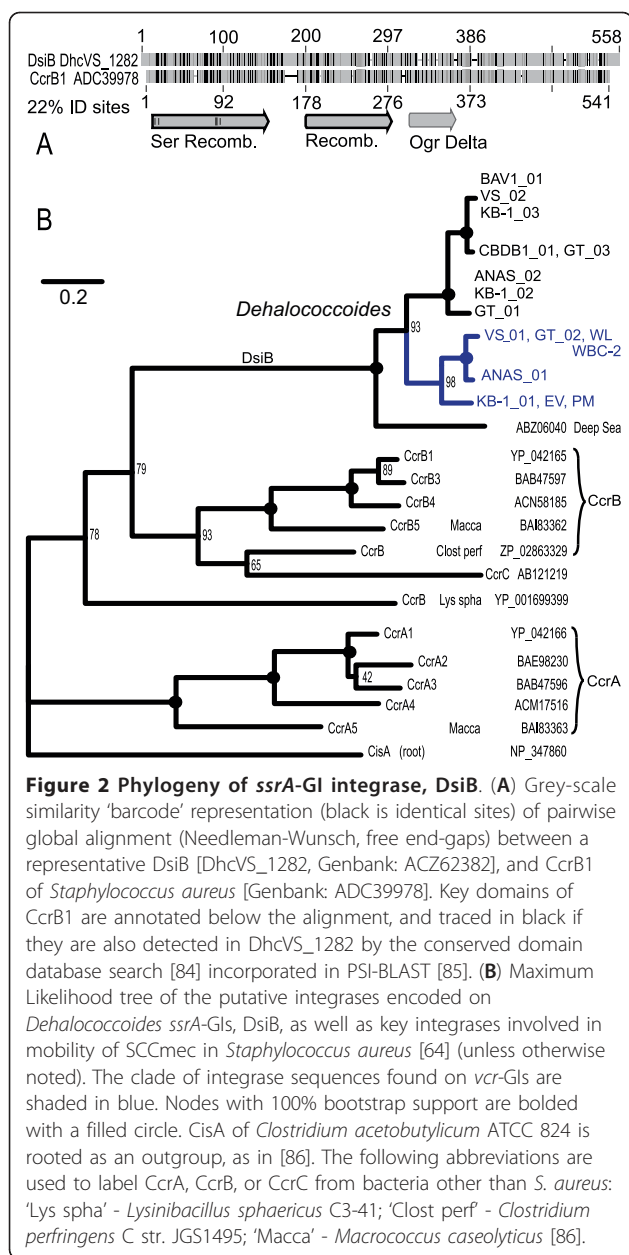


Figure 1 General structure of *ssrA* genomic islands (*ssrA*-GIs). (A) Generalized structure of *Dehalococcoides* *ssrA*-GIs, oriented according to published *Dehalococcoides* complete genomes. Labels below genes in the integration module indicate the most informative homolog of the protein encoding gene. (B) Alignment of the 84 bp region surrounding the 3' end of *ssrA* or its direct repeat (DR) fragments (shaded black in the consensus) from 40 such positions in available *Dehalococcoides* genomes. Each sequence is labeled by its strain or enrichment name, underscore, and the order in which it occurs, beginning with the 3' end of *ssrA*. Positions in the alignment that disagree with the 75% consensus sequence are shaded in darker grey. The alignment is ordered such that sequences corresponding to *Dehalococcoides* *ssrA* ("_01") are the top 10 sequences, emphasizing a conserved position of disagreement between *ssrA* sequences and the direct repeat regions, position 15 in the alignment, 333 in *ssrA*. The two bases flanking the inferred integration site are marked with a hash. (C) To-scale genomic maps of region downstream of *Dehalococcoides* *ssrA* in (meta)genomic datasets. Orientation of genes is indicated with arrows. Key genes are shaded according to the provided legend.

homolog likely involved in DNA recombination or repair [36], (4) a 210 residue protein with ParBc domain, possibly catalyzing single-stranded DNA cleavage, circular element nicking, element segregation ([37,38], PF02195); (5) a Mom [39] homolog (270 aa), predicted to play a role in restriction endonuclease resistance via methylation [40,41]; and (6) a large (700 aa) protein containing a DNA-directed RNA polymerase domain in the first 85 residues (GO:0003899). These integration modules also contain a 76 bp conserved tRNA-like locus embedded within the first 150 bp of the fifth protein encoding gene, approximately 4400 bp from *attL* (Figure 1A). It is usually labeled as

'pseudo-tRNA' by automated annotation pipelines, but alignment-based RNA folding analysis predicts a complete tRNA-Gly-like structure (Additional file 1 Figure S1). The elevated sequence conservation at its 3' end provides an effective target for primers, as do the regions surrounding *ssrA* direct repeats and a site of locally high nucleotide conservation within *dsiB* (Figures 1B, Additional file 1 Figure S2). Alignment of the ~85 bp surrounding each of the 28 *ssrA* direct repeats reveals additional nucleotide conservation and allows identification of the site of insertion in *ssrA* (Figure 1B). A 15 bp motif (TTCAGRSMGMRKCCA) occurs adjacent upstream of the direct repeat and does not



align well with the corresponding positions in *Dehalococcoides* *ssrA* (318-333), indicating that insertion likely occurs between 333 and 334 in *ssrA*. This location corresponds to the middle of the T-loop of the encoded tmRNA, between the canonical insertion positions called 'Sublocations II and III' [24] (Figure 1B).

Specific features of *vcr*-GIs

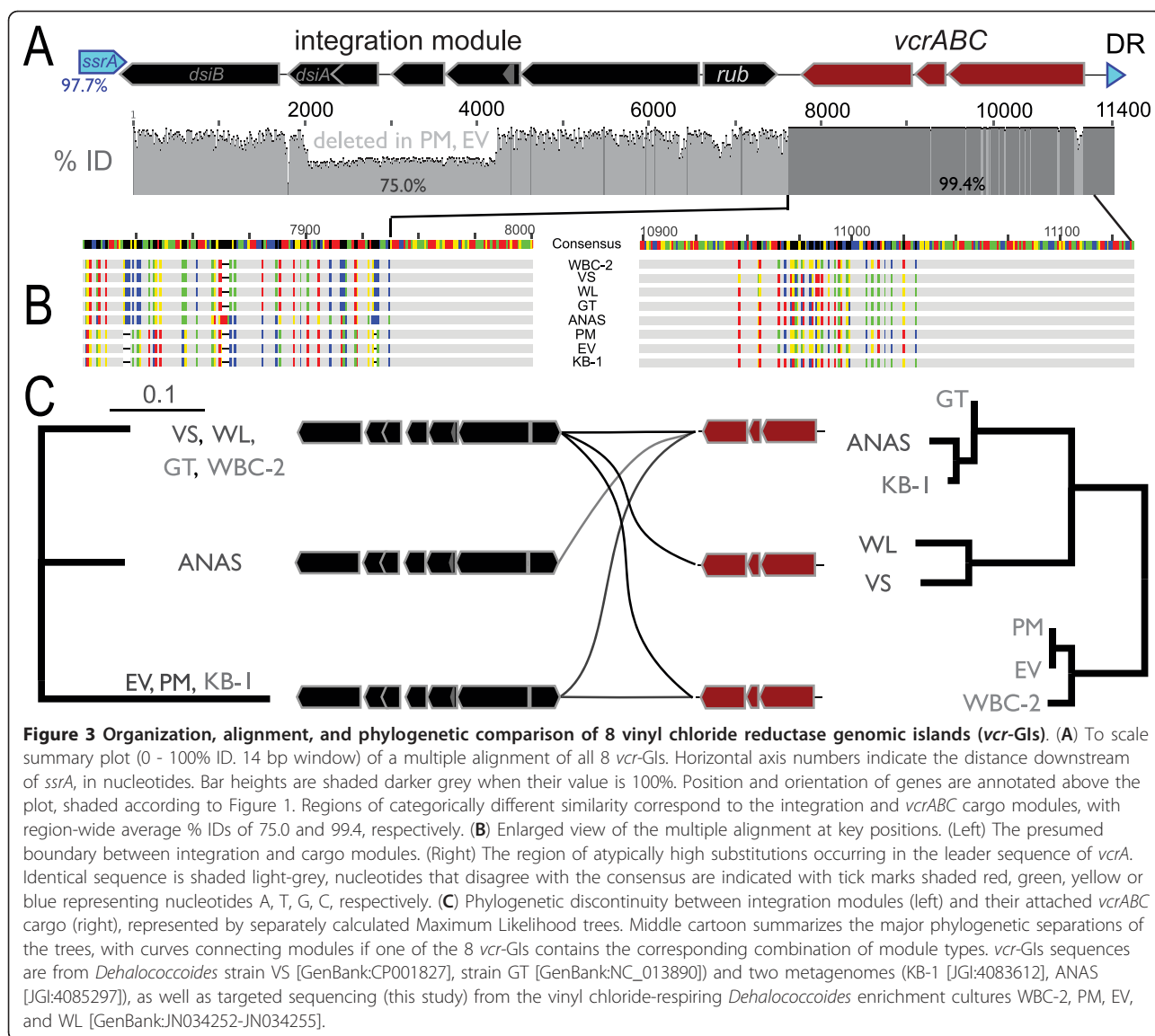
vcr-GIs are a distinct subset of *Dehalococcoides* *ssrA*-specific genomic islands, present in two *Dehalococcoides* genomes (VS [GenBank:CP001827], GT [GenBank:NC_013890]) and two metagenomes (KB-1 [JGI:4083612], ANAS [JGI:4085297]). Using primers that target conserved

features of all *ssrA*-GIs or specific features of *vcrABC*, we amplified and sequenced 4 additional *vcr*-GIs from independently derived vinyl chloride respiring *Dehalococcoides* enrichment cultures (WBC-2, PM, EV, WL [GenBank: JN034252-JN034255] see Methods). In all instances the *vcr*-GI is located immediately adjacent to *ssrA*, except strain GT where it is the second genomic island downstream of *ssrA*. Because *ssrA* is an essential single-copy gene encoding a structural RNA [42], its sequence provides a coarse phylogenetic identity of the chromosome from which it was amplified [43]. This allowed confirmation that the *vcr*-GIs acquired via metagenomic and targeted sequencing are *Dehalococcoides* chromosomal segments, even though the source genomic DNA was from a mixed culture (Figure 3, Additional file 1 Figure S3).

These *vcr*-GIs contain integration and cargo (*vcrABC*) modules with discordant evolutionary histories. The boundary between integration module and *vcrABC* is delineated by an unambiguous difference in nucleotide identity, 75.0 and 99.4%, respectively (Figure 3). This boundary reveals that *vcr*-GI integration modules contain a seventh protein encoding gene oriented in the opposite (forward) direction encoding a rubredoxin domain protein, in addition to the 6 integration module genes described previously (Figure 3). These integration modules (9164 - 11361 bp) are related as three distinct branches with nearly-identical leaves (masking a ~2200 bp deletion in PM, EV), grouped in a topology that is discordant with the corresponding tree of the 3784 bp *vcrABC* cargo (Figure 3). Relatedness of *vcrABC* -cargo sequences was estimated based on the 44 variant positions in their alignment, appearing mostly (66%) in the form of substitutions in the leader sequence of *vcrA* [5] (Figure 3). K_a/K_s ratios for the *vcrA* leader sequence (first 129 bp) ranged between approximately 0.05 and 0.2 for different pairwise combinations [44] and phylogenetic nodes [45], suggesting this region is under purifying selection. By contrast, the K_a/K_s ratio for the remainder of *vcrA* was incalculable because all 15 variant positions (out of 1431 bp) were non-synonymous substitutions, suggesting recent positive selection on the mature *VcrA* enzyme. This latter conclusion must be tempered by the limited information available in just 15 variant sites, the complete lack of indels detected in any *vcrA* (suggesting some purifying selection in the leader sequence), as well as the clear influences of recent horizontal gene transfer and recombination on these *vcr*-GIs. For example, *vcrC* is identical across all strains, within a 1650 bp region of perfect identity.

Age of *Dehalococcoides*

A core-gene phylogenetic tree was constructed to support age estimates based on evolutionary models. The core-gene tree was built from 432 core orthologous protein



encoding genes shared between available *Dehalococcoides* (meta)genomes and *Dehalogenimonas lykanthroporepellens* BL-DC-9, a *Chloroflexi* strain that is a phylogenetic outgroup to *Dehalococcoides* and its closest completely-sequenced relative [46]. Age estimates depend heavily on the assumed rate of mutation. We iterated our calculations on multiple published mutation rates (see Methods), as well as an empirical observation for mutation rate derived from the known divergence time (16 years, S. Zinder, pers. comm.) between the isolation of *Dehalococcoides ethenogenes* strain 195 [6] and the generation of a metagenome of its parent culture, DONNA2 (R. E. Richardson, pers. comm.). The latter empirical rate is substantially faster than the published values of faster-growing microbes (Additional file 4 Table S1), possibly because it includes mutations that already existed between strain variants

within the DONNA2 culture prior to isolation of strain 195. Although we expect a long-term average mutation rate in the natural environment to be slower, and hence ages based on this rate to be an underestimate, it remains useful as a conservative bound on the 'recentness' of the events in question. Similarly, we used a range of growth rates to estimate the age of *Dehalococcoides*. For a recent bound we used the fastest reported *Dehalococcoides* doubling time (0.8 days [6]), as well as a range of slower reported growth rates from anaerobic environmental systems for more realistic estimates (11-14 days [47-49]). The corresponding estimates and lower (recent) bounds are presented in Table 1.

In relative terms, the divergence of *Dehalococcoides* and *Dehalogenimonas* are comparable to the predicted most recent common ancestor (MRCA) of available integration

Table 1 Divergence Time Estimates Under Different Rates of Evolution

Divergence of interest	Tree Calculation Method	Divergence time estimates from different proposed rates					
		Universal bacterial rate in nature		Empirical <i>E. coli</i> rates in culture		DONNA2/ strain 195 divergence	16S clock
<i>Dehalogenimonas/Dehalococcoides</i> MRCA	Splitstree	5	(1.9/28/33/34)	0.9	(0.4/5.3/6.2/6.3)	0.5	200-600
	ML	3	(1.2/18/21/21)	0.5	(0.2/3.2/3.8/3.9)	0.3	
<i>Dehalococcoides</i> MRCA	Splitstree	0.3	(0.14/2/2.4/2.4)	0.06	(0.03/0.37/0.44/0.44)	0.04	30-60
	ML	0.4	(0.17/2.5/3/3)	0.08	(0.03/0.47/0.55/0.56)	0.04	
<i>ssrA</i> -GI integration modules MRCA	ML	3	(1.1/16/19/19)	0.5	(0.2/3/3.5/3.6)	0.2	
integration modules MRCA, <i>vcr</i> -GIs only	ML	1	(0.4/5.5/6.5/6.6)	0.2	(0.07/1/1.2/1.2)	0.08	
<i>vcrAB</i> MRCA	ML	0.05	(0.02/0.27/0.31/0.32)	0.008	(0.03/0.47/0.55/0.56)	0.004	
<i>vcrAB</i> , leader masked	ML	0.01	(0.004/0.057/0.067/0.068)	0.002	(0.001/0.010/0.012/0.013)	0.0009	

Reported age estimates (left, no parenthesis) are based on the rate of evolution listed in the column header as well as the average *Dehalococcoides* doubling time from published values (2 days). All estimates are reported in units of 1 million years. Age estimates of the *Dehalococcoides* clade from the Splitstree consensus network are based on branch lengths of strains to the common network node. '16S clock' is based on 1-2% 16S rRNA gene divergence per 50 million years [83]. Values in parenthesis are results from different doubling time estimates: 0.8 days - the fastest reported doubling time for *Dehalococcoides* [6]; 11.71 days - anaerobic benthic sediment community doubling time [49]; 13.76 days - bacterial doubling time in anaerobic seawater [48]; 14 days - approximate doubling time of the strictly anaerobic annamox bacteria [47]. For the secondary calculations of age estimates, an extra significant digit has been reported to allow distinguishing of estimates.

modules, approximately an order of magnitude earlier than the MRCA of *Dehalococcoides* strains. The MRCA of *vcr*-GI integration modules also significantly precedes the divergence of contemporary *Dehalococcoides* strains. In contrast, the high similarity among *vcrABC* sequences results in an estimated age that is at least an order of magnitude younger than *Dehalococcoides* speciation (Figure 4, Table 1).

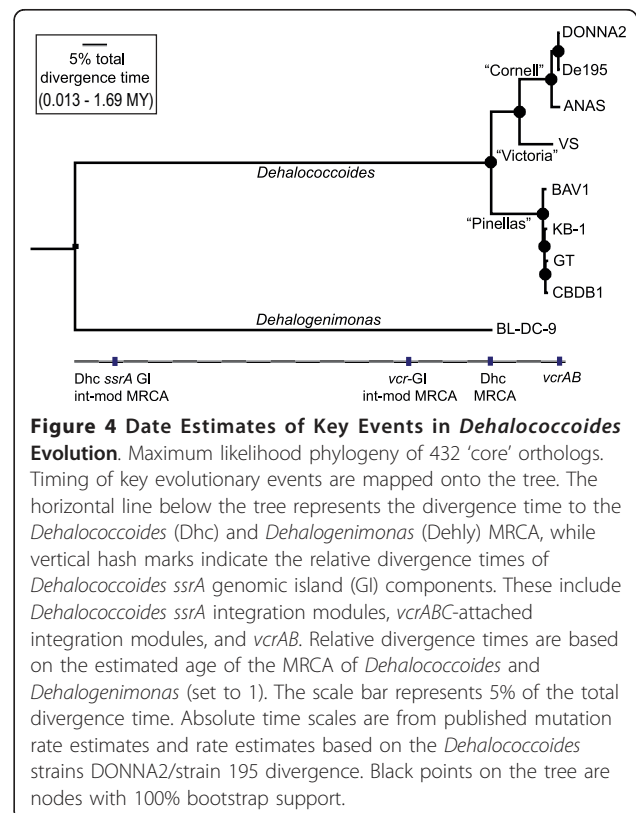
Discussion

Age and specific features of *vcrABC* acquisition

Nucleotide similarity is significantly higher between *vcrABC* cargo modules than can be expected if it was an orthologous locus present in the *Dehalococcoides* common ancestor (Figures 3, 4). In all cases *vcrABC* is located within a syntenic putatively-mobile element, *vcr*-GI, that is part of a broader class of *ssrA*-specific mobile elements that appear to be common among *Dehalococcoides*. In all *vcrABC*-containing strains except GT, the *vcr*-GI is located adjacent to the primary site of integration, *ssrA*, structural evidence that *vcr*-GIs are among the most recently integrated of the available *Dehalococcoides* *ssrA*-GIs. Within phylogenetic branches, integration modules are perfectly identical, except for a large identical deletion in the EV and PM *vcr*-GIs. The significantly unusual nucleotide signature of *vcr*-GIs [9,20], as well as the discordance between the *vcrA* tree and the corresponding *Dehalococcoides* strain phylogeny, indicate that *vcrABC* has not been stably maintained in *Dehalococcoides* genomes since their divergence. Taken together, these observations suggest recent horizontal acquisition and dissemination of *vcrABC* across all *Dehalococcoides* ecotypes by way of a *ssrA*-specific

mobile element with conserved attachment site and integration module.

Because anthropogenic release of chloroethenes into the environment is a relatively recent phenomenon (~100 years [3]), we are particularly interested in the recent bounds for estimates of the age of the MRCA of



these *vcrABC* sequences as a proxy for their horizontal acquisition by *Dehalococcoides*. Using our highest estimated rates of mutation and chromosomal replication, the divergence of these *vcrABC* sequences appears to have occurred 4000 years ago. This value is inflated by the inexplicably high variation within the leader sequence of *vcrA*. If we remove the *vcrA* leader sequence from the calculation, the age of divergence decreases to 900 years. However, there is clear signal for positive selection in the remaining *vcrAB* sequence alignment: all 16 variant positions (15 in *vcrA* and 1 in *vcrB*) are predicted to result in amino acid substitutions. If positively selected, these mutations may have accumulated faster than the background rates assumed in our molecular dating calculations. Because the relative increase in substitution rate is unclear and the total information represented by just 16 variant positions is low, we cannot confidently distinguish the divergence of these *vcrABC* from the first industrial production of chloroethenes. By contrast, our most conservative estimate for the MRCA of contemporary *Dehalococcoides* strains is 40,000 years ago (ranging as high as 3 Mya, Table 1), long before industrial civilization had a chance to influence the evolution of *Dehalococcoides* and their streamlined genomes specialized for organohalide respiration.

It is important to note that these molecular dating estimates use the available *vcrABC* sequences to predict the first horizontal acquisition of *vcrABC* by *Dehalococcoides*. This analysis is not meant to predict the age of genesis of the first vinyl chloride reductase. We did not detect partial homology with other *rdhA* that would suggest *vcrA* is a chimera resulting from a recent homologous recombination event. Moreover, the existence of an alternate vinyl chloride reductase from strain BAV1, *BvcA* [19], that shares deeply branching ancestry with *VcrA* on a tree of available *RdhA* [9], suggests that vinyl chloride reductases have existed for a considerable period of time, just not within strains of *Dehalococcoides* for which sequence data is currently available. In fact, naturally occurring vinyl chloride has been detected in soils [50], providing a plausible source of selective pressure to explain the existence of vinyl chloride reductases in nature prior to human pollution. However, we have not identified any candidate lineages as the possible progenitor of vinyl chloride reductases, and we have no way of knowing whether the primary substrate for the ancestral *VcrA* or *BvcA* was consistently vinyl chloride, leaving their ancestral history unclear.

The phylogenetic discord between integration modules and their attached *vcrABC* indicates that homologous recombination - or perhaps a more directed form of 'module swapping' - has recently occurred between *vcr*-GIs (Figure 3). This additional inter-element recombination may be independent of *ssrA*-specific integration, but it

would still require horizontal transfer so that 2 or more *vcr*-GIs are collocated within the same cell. Multiple *vcr*-GI variants have not been detected in the same complete genome. However, we did detect a low-coverage variant in the KB-1 metagenome assembly with 3 corroborating reads that perfectly match a different *vcr*-GI integration module found in VS, WL, GT, and WBC-2 cultures, providing preliminary evidence of the physical collocation of two *vcr*-GIs within the KB-1 culture (Additional file 5 Figure S4).

***ssrA*-GIs appear to be integrative and mobilizable elements**

A subset of *Dehalococcoides rdhAB* were previously implicated in horizontal transfer [31,32], including the trichloroethene reductase gene, *tceAB* [32]. Although the selective conditions in chloroethene-contaminated environments favors maintenance of *tceAB* and *vcrABC*, the genes implicated in *tceAB* transfer [32] share no detectable homology with the *ssrA*-specific system described in detail here. We hypothesize that these *Dehalococcoides ssrA*-GIs behave as integrative and mobilizable elements ("IMEs") because they do not appear to encode conjugation, although they share many other features of the broadly defined class of integrative and conjugative elements ("ICES") [33]. It may be possible that conjugation is encoded by a surprisingly minimal gene set within the integration modules [33], similar to the small (10.9 kbp) integrating and conjugating element 'pSAM2' of *Streptomyces ambofaciens*, which requires only a single gene, *traSA*, for inter-mycelial (conjugal) transfer [51]. *Dehalococcoides* core genes do include putative *pil* genes, the functions of which are unclear but may play a role in conjugation. Some strains of *Dehalococcoides* contain unambiguous prophages, providing an alternative hypothesis for the mechanism of *ssrA*-GI transfer, via illegitimate packaging of the excised *ssrA*-GI into a phage capsule. The length of *Dehalococcoides ssrA*-GIs is within the range of typical phage genomes. However, evidence for a complete prophage is not as ubiquitous among *Dehalococcoides* as the presence of *ssrA*-GIs, and there have been no descriptions to date of *Dehalococcoides* phage that also encode an *rdhA*, leaving the influence of phage on *rdhA* evolution unclear. Based on currently available evidence, we hypothesize that *Dehalococcoides ssrA*-GIs are mobilizable but not conjugating elements that sometimes mobilize adjacent tandem islands but in all cases rely on a host- or phage-encoded system for cell-cell transfer of a transient, presumably circular, intermediate.

Dehalococcoides also contains *comEA*, and it is unknown if *Dehalococcoides* is transiently competent for uptake of exogenous DNA. However, transfer via stochastic competence is an unsatisfying explanation, mainly

because *Dehalococcoides* *ssrA*-GIs appear to lack genes encoding independent replication, and stable non-phage extrachromosomal elements have not been observed in *Dehalococcoides* [7-9].

Occasionally integrating and conjugating elements do have replicative forms [33], as in the case of rolling circle replication of pSAM2 in the donor cell [52]. Maphosa et al. recently described a field site in which there were 1 to 2 orders of magnitude more *vcrA* copies detected than copies of *tceA*, *bvcA*, or *Dehalococcoides* 16S rRNA genes [53]. *vcrA* was also more abundant than *Dehalococcoides* 16S rRNA genes in a dechlorinating bioreactor inoculated from the site [53], suggesting either (1) there exists a *vcr*-IME that can replicate independently or has integrated within an element that can replicate independently, or (2) they detected a non-*Dehalococcoides* population that also possesses *vcrA*, coexisting with a *Dehalococcoides* population.

It is important to note that, while a conspicuous and common feature, not all *Dehalococcoides* *ssrA*-GIs contain an integration module. We identified 15 *ssrA*-GIs without integration modules, containing a total of 38 *rdhA* as well as other genes. These might be 'cis-mobilizable elements' that encode neither integration nor transfer, but retain functional *attL/attR* sites [33] and are occasionally or constitutively mobilized with adjacent genomic islands through a process known as accretion [54]. In some cases these tandem *ssrA*-GIs may have been previously mobile but are now fixed in the chromosome. For example, there is a region immediately downstream of the direct repeats furthest from *ssrA* that is similarly dense in *rdhA* while also syntenic across *Dehalococcoides* strains, phylogenetically coherent with whole genome estimates, and devoid of *ssrA*-GI signatures (Additional file 6 Figure S5); suggesting this region was present in the MRCA of available *Dehalococcoides* [9]. Some or all of this region may have been acquired originally as an *ssrA*-GI, but deletion and amelioration has erased evidence of horizontal gene transfer.

Likely Roles within *ssrA*-GI Integration Modules

The first identified *Dehalococcoides* *ssrA*-specific integrase gene (*dsiB*) (DhcVS_1292) was sequenced following the original identification and characterization of *VcrA*, and noted for its proximity to *vcrA* on the chromosome [5]. It is now clear that DhcVS_1292 is part of an integration module in an adjacent downstream *ssrA*-GI (GI 02 in VS, Figure 1), one of 16 *dsiB* homologs detected in *Dehalococcoides* genome sequences. The closest relative to *dsiB* in the public database is present on a fully-sequenced metagenomic fosmid from a deep (4000 m) ocean subsurface sample (EU016565, Figure 2), within an apparent integration module that also includes homologs to *dsiA*, *parB*, *mom*, and a putative tRNA embedded in

mom, as well as an unambiguous *ssrA*-direct repeat at the homologous *attL* position embedded in *dsiB* (Additional file 7 Figure S6). This is especially intriguing in light of the recent sequencing of 32 novel *rdhA* amplified from various marine subsurface sediments [55], many of which appear phylogenetically within a major *rdhA* branch (Cluster I [9]) that is otherwise populated only by *rdhA* from *Dehalococcoides* or *Dehalogenimonas*. Given this indirect evidence and the large diversity of organohalogenes detected in marine systems [56], it is tempting to speculate that *Dehalococcoides* plays a role in these settings. However, in the absence of direct observation of *Dehalococcoides*-like microorganisms in marine (subsurface) settings, this role remains unclear.

A more sensitive database search indicated that DsiB is a structurally similar homolog of CcrB, containing the serine-recombinase-catalytic domain at the N terminus, as well as similar motifs along its ~500 residue length (mean 22% ID, Figure 2A). CcrB specifically integrates/excises the so-called 'Staphylococcus Cassette Chromosome' (SCC [57]) family of mobile elements that are a vector of antimicrobial resistance (among other phenotypes [58,59]), with major consequences for hospitals and the greater community [60-63]. CcrB was shown to have DNA-binding and recombination activity for *attS* of SCC [64], but SCC integration [57] and *attB*-specific excision both required the product of a smaller, co-transcribed serine recombinase gene, *ccrA*, that does not encode a DNA-binding domain [64]. Similarly, *Dehalococcoides* integration modules encode on a putative operon a second, smaller serine recombinase, DsiA, that also lacks a detectable DNA-binding motif. *Dehalococcoides* *ssrA*-GIs and SCC also share overlapping size ranges and specifically integrate at a non-tRNA, single-copy essential gene. We hypothesize that integration/excision of *Dehalococcoides* *ssrA*-GIs occurs in a homologous mechanism to SCC, via DsiB in concert with DsiA, with other integration module elements likely playing a role in regulation of integrase/excisionase activity or modification of the excised element to facilitate transfer or maintenance. Unfortunately, the mode of SCC transfer among *Staphylococcus* is unclear [65], and so does not provide additional clues regarding a likely transfer mechanism.

Interestingly, *dsiB* is always found overlapping *attL* at its 3' end. A stop codon occurs only upstream of the genomic island, even if that means overlapping substantially with an adjacent genomic island or *ssrA* itself. Complimentary overlap of *ssrA* with small open reading frames has been detected in some bacteria with ambiguous implications [66]. It seems unlikely in this instance that the 3' terminal ~70 bp of *ssrA* also encode a functional region of *dsiB* on its complementary strand. Accordingly, alignments of DsiB are divergent at this portion of their sequence, both in length and amino acid similarity. The majority of *dsiB*

is upstream of *ssrA* or its direct repeat, and already comprises the expected length for homologs of *ccrB* (1600 bp). In addition to a trivial explanation in which *dsiB* undergoes low-efficiency translation that is variable at the C-terminus, it may be that *dsiB* is only fully functional when encoded on the circularized element, or alternatively when encoded on the chromosome downstream of an adjacent genomic island containing the requisite 3' gene fragment. In any case, the overlap of *dsiB* with *attP/attL* leaves the stop codon of *dsiB* unclear, and may have functional relevance or affect regulation of *dsiB*.

Conclusions

Structural comparison of new (meta)genomic data, as well as targeted sequencing from unsequenced vinyl chloride respiring enrichment cultures, resulted in identification of 8 homologous mobile elements containing the vinyl chloride reductase operon, *vcrABC*. These *vcr*-GIs are a subset of mobile genetic elements in *Dehalococcoides* that specifically integrate at the single-copy gene, *ssrA*. A detailed comparison of these *ssrA*-GIs allowed identification of the precise position of insertion, the direct repeat created by the insertion event, as well as a conserved module of syntenic integration-associated genes that includes the likely *ssrA*-specific integrase, which we named *dsiB*. *ssrA*-GIs are most likely 'integrating and mobilizable elements' (IMEs) that do not encode their own mechanism of cellular transfer. Core (meta) genome phylogenetic analysis allowed an estimation of timing of divergence of *Dehalococcoides* strains, between 40,000 and 400,000 years ago, suggesting that the specialization by *Dehalococcoides* for respiration of organohalide compounds far precedes industrial synthesis by humans. By contrast, time estimates for the first horizontal acquisition of *vcrABC* sequences by *Dehalococcoides* are not confidently distinguishable from the first industrial synthesis of chloroethenes ~100 years ago. Vinyl chloride reductases may be ancient, nevertheless, and the donor(s) of recent genetic diversity to *Dehalococcoides* remain undetermined.

Methods

Identification of *Dehalococcoides* sequences in metagenome data

For ANAS and KB-1 enrichment cultures, complete genomes have not been assembled. However, identification of *Dehalococcoides* contigs was performed by comparison with closely-related complete genomes of strains 195 and CBDB1, respectively. For KB-1, gap closure was performed to create a closed draft genome of the dominant *Dehalococcoides* strain in the metagenome, including primer-walking of gap-spanning fosmid inserts, as well as gap-spanning PCR amplification from an aliquot of the originally-submitted KB-1 genomic DNA. For ANAS,

structural genomic information comes from a single contig (contig 2014738012; 119815 bp) that contains a *Dehalococcoides ssrA* on one end and a series of tandem *ssrA*-GIs downstream (Figure 1). A second contig containing a *Dehalococcoides ssrA* was also detected (2014739670), but it contained no detectable *ssrA*-GIs. *Dehalococcoides* orthologs present in the ANAS dataset were detected using reciprocal best-hit BLASTp criteria described previously [8,9], treating the collection of all *Dehalococcoides* protein encoding genes in ANAS as if it were one genome. Although ANAS contains more than one *Dehalococcoides* strain, this approach had little effect on the number of orthologous groups considered 'core' between all *Dehalococcoides*, mainly because sequencing was sufficiently deep and because the *Dehalococcoides* strains in ANAS are closely-related to the Cornell lineage from which *ethenogenes* 195 is the only completely-sequenced representative [67].

DNA Source, Primer Design, Amplification Optimization

Enrichment cultures were derived from samples from geographically distinct contaminated sites (Additional file 8 Figure S7): WL from Western Louisiana [30]; EV from the Evanite site in Corvallis, Oregon [28]; PM from the Point Mugu Naval Weapon Facility, California [28]; and WBC-2 from the West Branch Canal Creek, Aberdeen Proving Ground, Maryland [29]. Culture, culture pellets, or genomic DNA were provided by L. Semprini (EV, PM) or E. Edwards (WL, WBC-2).

Nucleotide positions strongly conserved at *ssrA*, its direct repeat, and a few locations within integration modules were used for primer design (Additional file 2 Figure S2). Amplification was successful with a variety of combinations of predicted melting temperature and degeneracy. We described only the best-performing primer pairs, especially those that contributed to *vcr*-GI amplification and sequencing. All PCR amplifications from mixed cultures were performed using Phusion polymerase under standard conditions using 'HF' buffer. Primer pairs were optimized toward amplification of regions of *ssrA*-GIs in mixed genomic DNA template by DMSO and annealing temperature gradients. For most target amplicons the optimal DMSO concentration was at or near 4%, with optimal annealing temperature depending on the primer, and summarized in Additional file 2 Figure S2. In particular, a 20 bp forward primer beginning at *Dehalococcoides ssrA* position 8 (CGTGG TTTCGACAGG-GAAGG - '*ssrA_03F*'), successfully amplified ~90% of all 4 novel *vcr*-GIs when paired with a reverse primer upstream of *vcrA* (GTTCTGACCA TGCCGTACC - '*vcrA_05R*'). The resulting (8.3 - 10.5 kbp) amplicons were purified in agarose gel electrophoresis and sequenced directly by the Sanger method (MCLAB, ELIM) and primer walking. No single primer-pair was

determined that could amplify a complete *ssrA*-GI in one reaction from *attL* to *attR*, as these would be reverse complements of one another and produce primer dimers. Instead, combinations of PCR reactions were amplified and sequenced separately, and their resulting sequence data was assembled *in silico* and verified manually. For example, forward primers targeting a conserved position in the integration module (TGGAGCGCCGCGTNGG - 'REC_003eF') amplify a portion of the integration module and all of the genetic cargo (~7 kbp) when coupled with a reverse primer that targets the *ssrA*-direct repeat (TGGTGGAGACGGGGGAGGG - 'REC_001eR'). Two-fold or greater coverage and perfect agreement between different amplicons from the same sample was required in assembly. In some instances *ssrA*-GI-derived amplicons were cloned in *Escherichia coli* following agarose gel purification. Efficient ligation to a vector was achieved with Enzymatic Assembly [68] and pSMART-LC-Kan (AF532106; Lucigen Corp.) or by blunt ligation into the pJAZZ-OK linear vector (FJ160465; Lucigen). Transformation was achieved chemically in *E. coli* DH5 α or electrically in *E. coli* BigEasy-TSA (Lucigen) cells, respectively.

Core Genome and Genomic Island Phylogenies

The reciprocal BLASTp procedure for identifying orthologous groups among *Dehalococcoides* was also applied to *Dehalogenimonas lykanthroporepellens* BL-DC-9 in comparison to *Dehalococcoides* ANAS, KB-1, 195, DONNA2, CBDB1, BAV1, GT, and VS; resulting in 432 core orthologous groups that were also free of paralogs. Global alignments of each orthologous group were performed by Muscle (version 3.8.31) [69]. Single gene trees were generated using RAXMLHPC (version 7.0.3) [70] under the GTR + γ model [71] with *Dehalogenimonas lykanthroporepellens* BL-DC-9 constrained as the outgroup to prevent long-branch artifacts. The resulting trees were entered into Splitstree4 [72] and a consensus network was generated. The single gene global alignments were concatenated to generate a single large alignment for the 9 organisms. A core-genome phylogeny was generated using RAXMLHPC as described above, with 10 initial random starting tree iterations and 100 bootstrap replications. The tree with the highest likelihood is presented in Figure 4 and used for evolutionary analysis. Alignments for components of genomic islands were generated using Muscle and refined with hmmer (version 2.3.2) [73], then masked manually. Phylogenies were generated in RAXMLHPC under the GTR + γ model with 10 random starting trees and 100 bootstrap replications. In each case, the appropriate sequence was constrained as an outgroup. The trees with the best likelihood were identified and used for further age estimate calculations.

Date Estimations

Estimates of the age of the *Dehalococcoides/Dehalogenimonas* divergence, the *Dehalococcoides* clade, as well as the various components of the genomic islands were determined under three different estimates for the rate of *Dehalococcoides* evolution. Two mutation rates from published values were used: one from a universal estimate of bacterial mutation rates in natural environments [74], and one from an empirical analysis of *E. coli* in lab cultures [75] (Additional file 3 Table S1). A third rate was based on a known divergence time of approximately 16 years between the separation of *Dehalococcoides ethenogenes* strain 195 ("strain 195") [6] from its mother culture - the "TCE/MeOH" culture (Prof. S. Zinder, pers. comm.) - in 1992, and the 2008 metagenome sequencing of the "DONNA2" enrichment culture. DONNA2 was also derived from the TCE/MeOH culture and maintained in parallel from strain 195 until its subsequent metagenome sequencing (R. E. Richardson, pers. comm., see DONNA2 Mutation Detection, below). Branch lengths between strain 195/DONNA2 were calculated from single-gene trees of the 387 core protein encoding genes, after excluding 45 trees that did not have strain 195 and DONNA2 as a monophyletic group, most likely resulting from frame-shift mutations. The mean branch length of the 387 protein encoding gene trees, the core-gene concatenated ML tree, as well as the splitstree [72] network average branch length were all approximately $3(10)^{-5}$. For a minimum separation of 16 years, this corresponds to $2(10)^{-6}$ branch length per year of *Dehalococcoides* divergence. It is important to note that some unknown fraction of the observed mutations could have already existed within the mother culture prior to isolation of strain 195 if parents of the two contemporary strain variants coexisted at that time. Combined with the imposed pressures for rapid growth inherent to a laboratory culture, we expect that the *Dehalococcoides* mutation rates observed by this approach represent an unrealistic upper bound to what is likely to occur in *Dehalococcoides* in nature. This value is still useful, however, for creating lower bounds in molecular dating estimates that are compared with relatively recent events (e.g. human civilization, anthropogenic chloroethene pollution, etc.).

DONNA2 *Dehalococcoides* Mutation Detection

Because the dominant bacterium in the DONNA2 culture was our target variant of strain 195, the DONNA2 metagenome data included a high coverage of this variant. A comparative assembly of the DONNA2 shotgun reads on the strain 195 genome allowed identification of reliable mutations between these two strains, using the Variant Ascertainment Algorithm (VAAL) under default

settings [76]). The DONNA2 metagenome project has gone through successive rounds of sequencing, and the mutation analysis described here is based on the raw 454 GS FLX Titanium shotgun reads available on 06 November 2009, which were subsequently filtered by alignment to the genome sequence of *Dehalococcoides* strain 195. The resulting 455,062 *Dehalococcoides*-derived reads had a mean length of 365 ± 142 nucleotides, and $\%(G+C)$ of 48.8. Our version of VAAL did not produce assembly statistics, but a separate comparative assembly using Geneious Pro v5.4 (medium-sensitivity default parameters) successfully aligned 454,342 reads to the strain 195 genome, for a coverage of 115.2 ± 41.2 . The consensus sequence of the comparative assembly produced by VAAL formed the basis for the subsequent strain-level mutation analysis. Gene annotations from strain 195 were mapped onto the DONNA2-variant genome sequence and the protein-encoding genes among these were extracted and included as a separate whole-genome collection in the genome-wide core gene phylogenetic analysis (above). The cumulative length of the protein encoding genes shared between 195 and DONNA2 was 1,301,665 bp; and among these genes we detected a total of 192 mutations, with adjacent SNPs considered part of a single mutation. Of these 192 mutations, 39% were deletions, 28% were insertions, 28% were transitions, and 4% were transversions. With respect to the predicted effects relative to the encoded protein in strain 195, 40% were frame-shift mutations, 40% were synonymous (probably no change), 19% were non-synonymous substitutions, and 1% were predicted to cause a truncation due to an early stop codon. It should be noted that frame-shift and truncation mutations would probably not directly affect our subsequent tree calculations because those genes would likely fail our orthology criteria (above) and thus would not be included in the set of “core” genes.

Ka/Ks ratios

K_a/K_s ratios are an intrinsically pairwise calculation that was performed on a subset of the most different pairs of *vcrA* (full-length, and leader sequence only) using the ‘kaks’ function in the SeqinR package [44] of R [77]. K_a/K_s ratios were also calculated for all adjacent branches in a phylogenetic tree of the 8 sequences, using the Ka/Ks Calculation tool [45].

Integration Module tRNA Secondary Structure

The putative tRNA sequence was originally detected by ARAGORN [78] and annotated previously in publicly available annotations of *Dehalococcoides* strains CBDB1 and VS. Secondary structure was predicted from the alignment of all 16 detected tRNAs in available *ssrA*-GI integration modules, submitted to the RNAalifold

[79,80], Pfold [81], and PETfold [82] web servers for independent calculations. The resulting structures were compared manually, including a comparison to classical tRNA secondary structure for identification of the conserved “DCC” anti-codon within a 5 nt anti-codon loop (Additional file 1 Figure S1).

Description of additional data files

Additional data file 1 is a PDF format file containing the supplemental figures and associated legends. Additional data file 2 is a Microsoft excel (.xls) file containing tables of growth rates and rates of evolution, as well as other parameters and example calculations used in the molecular dating analyses.

Additional material

Additional file 1: Figure S1: Alignment and Predicted Secondary Structure of Putative tRNA-gly. These tRNA-gly are strongly conserved in 16 *Dehalococcoides* *ssrA*-GI integration modules. Bases are shaded according to the Vienna RNA conservation coloring schema in both the alignment (A) and secondary structure cartoon indicating the majority consensus with degeneracy (B). Secondary structure prediction was unanimous from three independent secondary structure prediction servers [80-82]. Free energy of the thermodynamic ensemble is -54.26 kcal/mol [80]. Substructure labels correspond to classical tRNA, including the apparent anti-codon ‘DCC’.

Additional file 2: Figure S2: Primers Mapped onto an Alignment of 16 *ssrA* Integration Modules. (A) Annotated alignment of the 16 integration modules discussed in this study. Individual sequences are shown as a thick black line, with gaps indicated by a thin horizontal line. Plot of average nucleotide identity (14 bp window) for all 16 sequences is shown along the top of the alignment. Three main target locations for primer design are indicated with downward-pointing black triangles, numbered beginning at *ssrA* (left). (B) Zoomed-in view of the alignment at the three target locations for primer binding. The 75% Consensus sequence is depressed slightly at the region targeted by primers, which are annotated along the top. Exact position of putative tRNA-gly is also shown.

Additional file 3: Figure S3: Phylogenetic Tree of *ssrA* Versus 16S rRNA gene. The most likely of 100 bootstrap Maximum Likelihood trees with bootstrap support shown at nodes. Support not shown at nodes with poor or ambiguous support. (A) Phylogenetic tree of *ssrA*, the ~350 bp gene encoding tmRNA. (B) Similarly calculated tree based on the 16S rRNA gene (~1500 bp), reflected relative to typical tree orientation to emphasize topological similarity with (A). Other Chloroflexi are included, with *Staphylococcus aureus* as an outgroup. Full name and accession number correspond to the following abbreviations: *Dehalococcoides* - Dhc; CBDB1 - Dhc CBDB1 NC_007356; GT - Dhc GT NC_013890; BAV1 - Dhc BAV1 NC_009455; 195 - Dhc *ethenogenes* 195 NC_002936; VS - Dhc VS NC_013552; Deha lyk - *Dehalogenimonas lykanthroporepellens* BL-DC-9 NC_014314; Staph aur - *Staphylococcus aureus* NC_002952; Rose cast - *Roseiflexus castenholzii* DSM 13941 NC_009767; Rose RS-1 - *Roseiflexus* sp. RS-1 NC_009523; Chlo aur - *Chloroflexus aurantiacus* J-10-fl NC_010175; Chlo agg - *Chloroflexus aggregans* DSM 9485 NC_011831.

Additional file 4: Table S1: Parameters and example calculations utilized in divergence age estimates. (Top table) Summary of age estimates for *Dehalococcoides*-related genetic divergence utilizing four different models for rate of evolution: (1) estimated universal bacterial rate of evolution in nature [74], (2) *in vitro* *E. coli* empirically derived rate of evolution [75], (3) empirical *Dehalococcoides* rate based on observed mutations in the whole genomes of strain 195 and its resequenced variant in the DONNA2 sister culture (see Methods), and (4) the 16S rRNA gene clock model. For ages based on the first two rates of evolution, we further

considered six different values for doubling time that span a range relevant to *Dehalococcoides*, including four published values for *Dehalococcoides* growth in laboratory culture [4,6,88,96], other anaerobic bacterial growth rates [47], and values derived from environmental anaerobic systems [48,49], as well as one arbitrarily large value (130 days) intended to represent general substrate-limited conditions. The left two columns indicate the divergence being considered and the tree calculation method, respectively. Ages are presented in units of 1 million years. **(Middle Two Tables)** Referenced summary of growth rates utilized for the age estimate calculations. **(Bottom Table)** Sample calculation for length of time to a single mutation, given rates of evolution taken from literature and the averaged *Dehalococcoides* growth rate.

Additional file 5: Figure S4: KB-1 variant at *vcr-GI* module transition.

(A) Cartoon representation of the *vcr-GI* observed in all 8 versions, as shown in Figure 3. (B) Alignment of the region at the transition between integration and *vcrABC* cargo modules, including reads in the KB-1 metagenome dataset that disagree with the main consensus at this location. All 3 of these variant reads are perfectly identical to the VS, GT, WL, and WBC-2 *vcr-GIs* at this position.

Additional file 6: Figure S5: Genetic Map of Putative Fixed *rdhA* Region Downstream of Direct Repeats.

(Top) Genetic map output from a Mauve alignment of the portion of High Plasticity Region 2 (HPR2) downstream of any *ssrA* direct repeats in the *Dehalococcoides* genomes. Each sequence was first aligned at tRNA-Ala-3 previously defining the boundary of HPR2 closest to the Ori [9], with local collinear blocks (LCBs) indicating large collinear homologous region that are free from rearrangements, but not necessarily indels. Large gaps were manually inserted such that vertical positions also containing the identity graph indicate aligned positions within the LCB. The darker grey LCB is the putative 'fixed' region of HPR2 downstream of any *ssrA* direct repeats. The lighter grey LCB is a portion of the *Dehalococcoides* core genome that surrounds the Ori. Annotated genes are shown beneath each LCB, with genes on the forward and reverse strands drawn as rectangles above or below the midline, respectively. *rdhA* are shaded red for emphasis. Scale bar shown in top left corner. Note that two different contigs from the ANAS genome are included. (Bottom) Phylogenetic trees of three semi-core (missing strain BAV1) *rdhA* that share a syntenic neighborhood within the putative fixed region. Each orthologous *rdhA* group recapitulates the topology and approximate genetic distances of the whole-genome tree (Figure 4). HPR2 was deleted in strain BAV1 [9], save for a ~600 bp *rdhA* fragment (DehaBAV1_1302) that is the basis for the tree on the right-hand side.

Additional file 7: Figure S6: Genetic Map of a *dsiB*-Containing Deep-Sea Environmental Fosmid.

The fosmid, EU016565, contains the most similar non-*Dehalococcoides* integration module(s) detected in the public database. EU016565 is part of an environmental shotgun sequencing dataset of genomic DNA obtained from a 4000 m sub-seafloor sediment [87]. Two partial *Dehalococcoides* *ssrA* integration modules are detectable, one of which contains an *ssrA* direct repeat at the expected location within a *dsiB* homolog. It also contains 4 of the 6 protein encoding genes typically found in integration modules as well as the putative tRNA embedded within *mom* homolog. The reverse-complement of EU016565 is displayed for consistent orientation with other figures. Light grey, dark grey, and black indicate protein encoding genes for which the annotation is hypothetical, identifiable, or part of the integration module, respectively.

Additional file 8: Figure S7: Geographic locations of *Dehalococcoides* strains and cultures mentioned in this article.

The underlying map was created using Google Earth. Labels have a dark red border if they are cultures/strains for which high throughput sequencing data is available and vinyl chloride respiration is reported. Blue borders indicate the vinyl chloride respiring cultures for which genomic island data was obtained during this study. White stars indicate cultures/strains for which no high throughput sequencing data was available at the time of this publication. The origin of the *Dehalococcoides* isolate FL2 [88] and the *Dehalococcoides* enrichment culture 'Pinellas' [89] are also shown. The following isolated bacterial strains were discussed in the manuscript: *Dehalococcoides* ethenogenes 195 - Ithaca Wastewater Treatment Plant, Ithaca, NY, USA [6,90]; CBDB1 - Saale River, Jena, Germany [91-93]; BAV1 - Bachman Road

Site, Oscada, MI, USA [94]; VS - Contaminated Site, Victoria, Texas, USA [95]; GT - Hydrite Chemical Co., Cottage Grove, WI, USA [17]; *Dehalogenimonas lykanthroporepellens* BL-DC-9 [46]. The following *Dehalococcoides* enrichments were discussed. An asterisk indicates that no high-throughput sequence data is currently available: KB-1 - Southern Ontario, Canada [25]; ANAS - Alameda Naval Air Station, CA, USA [27] *PM - Point Mugu Naval Weapon Facility, CA, USA [28]; *EV - Evanite contaminated site, Corvallis, Oregon, USA [28]; *WBC-2 - West Branch Canal Creek, Aberdeen Proving Ground, MD [29] *WL - contaminated site, Western Louisiana, USA [30].

Abbreviations

vcrABC: the vinyl chloride reductase operon; ***ssrA***: the tmRNA encoding gene; ***ssrA-GI***: *ssrA*-specific genomic island; ***vcr-GI***: a *vcrABC* -containing *ssrA*-specific genomic island, a subclass of *ssrA-GI*; **DsiB**: predicted *Dehalococcoides* *ssrA*-specific integrase; ***dsiB***: gene encoding DsiB; **MRCA**: most recent common ancestor; **ML**: Maximum Likelihood; **DMSO**: dimethyl sulfoxide; **CRISPR**: clustered regularly interspaced short palindromic repeats; **SCC**: Staphylococcus Cassette Chromosome; ***attL/attR***: the extreme left or right edge, respectively, of the genomic island that likely participates in site-specific recombination; ***attB/attP***: the DNA motif on the bacterial chromosome or mobile element, respectively, that likely participates in site-specific recombination; **IME**: integrative and mobilizable elements; **ICE**: integrative and conjugative elements; **pSAM2**: an integrative and conjugative plasmid found in many *Streptomyces*; **EV, PM, WBC2, WL, ANAS, KB1, DONNA2**: *Dehalococcoides* enrichment culture names; **CBDB1, GT, VS, BAV1**: *Dehalococcoides* strain names.

Acknowledgements

The authors would like to thank Ruth Richardson (Cornell University) for advance access to the DONNA2 metagenome raw sequence data, Steve Zinder (Cornell University) for sharing insight into the minimum timing of culture divergence, Lew Semprini (Oregon State) for providing samples from the Evanite and Point Mugu enrichment cultures, Michelle Lorah for providing the WBC-2 enrichment culture, and John Roth for helpful comments on the manuscript, as well as Koshlan Mayer-Blackwell and Daniel M. Callahan for assistance with cloning and sequencing. This work was supported by the Strategic Environmental Research Defense Project (SERDP) to AMS by grant ER-1588. SH was partially funded by NIH grant R01GM086884, PJM was partially funded by fellowship grant FP-91671901 from the U.S. Environmental Protection Agency's Science to Achieve Results (STAR) program. (Meta)Genome sequencing and assembly was made available under the auspices of the U.S. Department of Energy Joint Genome Institute, supported by the Office of Science of the U.S. Department of Energy under Contract No. DE-AC02-05CH11231.

Author details

¹Department of Civil and Environmental Engineering, Stanford University, Stanford, California, USA. ²Department of Cell and Systems Biology, University of Toronto, Toronto, Ontario, Canada. ³Department of Chemical Engineering and Applied Chemistry, University of Toronto, Toronto, Ontario, Canada. ⁴Department of Statistics, Stanford University, Stanford, California, USA. ⁵Department of Chemical Engineering, Stanford University, Stanford, California, USA.

Authors' contributions

PJM conceived of the experiments, carried out the molecular experiments, performed the comparative analyses, and drafted the manuscript. LAH maintained the WBC-2 and WL cultures, assisted with the molecular experiments, performed the molecular dating analyses and helped to draft the manuscript. EAE participated in the design of the study and helped to draft the manuscript. SH consulted on the molecular dating analyses and helped to draft the manuscript. AMS participated in the design of the study and helped to draft the manuscript. All authors read and approved the final manuscript.

Received: 31 January 2011 Accepted: 2 June 2011

Published: 2 June 2011

References

1. McCarty PL: Breathing with chlorinated solvents. *Science* 1997, **276**(5318):1521-1522.
2. International Agency for Research on Cancer (IARC): Vinyl Chloride. *Monographs on the evaluation of carcinogenic risks to humans* IARC; 1987, 311-443.
3. Kielhorn J, Melber C, Wahnschaffe U, Aitio A, Mangelsdorf I: Vinyl chloride: still a cause for concern. *Environ Health Perspect* 2000, **108**(7):579-88.
4. He J, Ritalahti KM, Yang KL, Koenigsberg SS, Löffler FE: Detoxification of vinyl chloride to ethene coupled to growth of an anaerobic bacterium. *Nature* 2003, **424**(6944):62-5.
5. Muller JA, Rosner BM, Von Abendroth G, Meshulam-Simon G, McCarty PL, Spormann AM: Molecular identification of the catabolic vinyl chloride reductase from *Dehalococcoides* sp. strain VS and its environmental distribution. *Appl Environ Microbiol* 2004, **70**(8):4880-4888.
6. Maymó-Gatell X, Chien Y, Gossett JM, Zinder SH: Isolation of a bacterium that reductively dechlorinates tetrachloroethene to ethene. *Science* 1997, **276**(5318):1568-71.
7. Seshadri R, Adrian L, Fouts DE, Eisen JA, Phillippy AM, Methe BA, Ward NL, Nelson WC, Deboy RT, Khouri HM, Kolonay JF, Dodson RJ, Daugherty SC, Brinkac LM, Sullivan SA, Madupu R, Nelson KE, Kang KH, Impraim M, Tran K, Robinson JM, Forberger HA, Fraser CM, Zinder SH, Heidelberg JF: Genome sequence of the PCE-dechlorinating bacterium *Dehalococcoides ethenogenes*. *Science* 2005, **307**(5706):105-108.
8. Kube M, Beck A, Zinder SH, Kuhl H, Reinhardt R, Adrian L: Genome sequence of the chlorinated compound-respiring bacterium *Dehalococcoides* species strain CBDB1. *Nat Biotechnol* 2005, **23**(10):1269-1273.
9. McMurdie PJ, Behrens SF, Müller JA, Göke J, Ritalahti KM, Wagner R, Goltzman E, Lapidus A, Holmes S, Löffler FE, Spormann AM: Localized plasticity in the streamlined genomes of vinyl chloride respiring *Dehalococcoides*. *PLoS Genet* 2009, **5**(11):e1000714.
10. Magnuson JK, Stern RV, Gossett JM, Zinder SH, Burris DR: Reductive dechlorination of tetrachloroethene to ethene by a two-component enzyme pathway. *Appl Environ Microbiol* 1998, **64**(4):1270-5.
11. Holliger C, Wohlfarth G, Diekert G: Reductive dechlorination in the energy metabolism of anaerobic bacteria. *FEMS Microbiol Rev* 1998, **22**(5):383-398.
12. Waller AS, Krajmalnik-Brown R, Löffler FE, Edwards EA: Multiple reductive-dehalogenase-homologous genes are simultaneously transcribed during dechlorination by *Dehalococcoides*-containing cultures. *Appl Environ Microbiol* 2005, **71**(12):8257-64.
13. Fung JM, Morris RM, Adrian L, Zinder SH: Expression of reductive dehalogenase genes in *Dehalococcoides ethenogenes* strain 195 growing on tetrachloroethene, trichloroethene, or 2,3-dichlorophenol. *Appl Environ Microbiol* 2007, **73**(14):4439-45.
14. Rahm BG, Richardson RE: Correlation of respiratory gene expression levels and pseudo-steady-state PCE respiration rates in *Dehalococcoides ethenogenes*. *Environ Sci Technol* 2008, **42**(2):416-21.
15. Johnson DR, Brodie EL, Hubbard AE, Andersen GL, Zinder SH, Alvarez-Cohen L: Temporal Transcriptomic Microarray Analysis of *Dehalococcoides ethenogenes* Strain 195 During the Transition into the Stationary Phase. *Appl Environ Microbiol* 2008, **74**(9):2864-2872.
16. Wagner A, Adrian L, Kleinstueber S, Andreesen J, Lechner U: Transcription analysis of genes encoding homologues of reductive dehalogenases in *Dehalococcoides* sp. strain CBDB1 using terminal restriction fragment length polymorphism and quantitative PCR. *Appl Environ Microbiol* 2009, **75**(7):1876-1884.
17. Sung Y, Ritalahti KM, Apkarian RP, Löffler FE: Quantitative PCR confirms purity of strain GT, a novel trichloroethene-to-ethene-respiring *Dehalococcoides* isolate. *Appl Environ Microbiol* 2006, **72**(3):1980-7.
18. Holmes VF, He J, Lee PKH, Alvarez-Cohen L: Discrimination of multiple *Dehalococcoides* strains in a trichloroethene enrichment by quantification of their reductive dehalogenase genes. *Appl Environ Microbiol* 2006, **72**(9):5877-83.
19. Krajmalnik-Brown R, Hölscher T, Thomson IN, Saunders FM, Ritalahti KM, Löffler FE: Genetic identification of a putative vinyl chloride reductase in *Dehalococcoides* sp. strain BAV1. *Appl Environ Microbiol* 2004, **70**(10):6347-6351.
20. McMurdie PJ, Behrens SF, Holmes S, Spormann AM: Unusual codon bias in vinyl chloride reductase genes of *Dehalococcoides* species. *Appl Environ Microbiol* 2007, **73**(8):2744-2747.
21. Langille MGI, Hsiao WWL, Brinkman FSL: Detecting genomic islands using bioinformatics approaches. *Nat Rev Microbiol* 2010, **8**(5):373-82.
22. Keiler KC: Biology of trans-translation. *Annu Rev Microbiol* 2008, **62**:133-51.
23. Keiler KC, Waller PR, Sauer RT: Role of a peptide tagging system in degradation of proteins synthesized from damaged messenger RNA. *Science* 1996, **271**(5251):990-3.
24. Williams KP: Traffic at the tmRNA gene. *J Bacteriol* 2003, **185**(3):1059-70.
25. Major DW, McMaster ML, Cox EE, Edwards EA, Dworatzek SM, Hendrickson ER, Starr MG, Payne JA, Buonamici LW: Field demonstration of successful bioaugmentation to achieve dechlorination of tetrachloroethene to ethene. *Environ Sci Technol* 2002, **36**(23):5106-16.
26. Duhamel M, Mo K, Edwards EA: Characterization of a highly enriched *Dehalococcoides*-containing culture that grows on vinyl chloride and trichloroethene. *Appl Environ Microbiol* 2004, **70**(9):5538-5545.
27. Richardson RE, Bhupathiraju VK, Song DL, Goulet TA, Alvarez-Cohen L: Phylogenetic characterization of microbial communities that reductively dechlorinate TCE based upon a combination of molecular techniques. *Environ Sci Technol* 2002, **36**(12):2652-62.
28. Yu S, Semprini L: Comparison of trichloroethylene reductive dehalogenation by microbial communities stimulated on silicon-based organic compounds as slow-release anaerobic substrates. *Water Res* 2002, **36**(20):4985-96.
29. Lorah MM, Majcher EH, Jones EJ, Voytek MA: Microbial consortia development and microcosm and column experiments for enhanced bioremediation of chlorinated volatile organic compounds, West Branch Canal Creek wetland area, Aberdeen Proving Ground, Maryland. *U.S. Geological Survey Scientific Investigations Report* 2007, **2007-5165**:1-79.
30. Grostern A, Edwards EA: Growth of *Dehalobacter* and *Dehalococcoides* spp. during degradation of chlorinated ethanes. *Appl Environ Microbiol* 2006, **72**:428-36.
31. Regard C, Maillard J, Dufraigne C, Deschavanne P, Holliger C: Indications for acquisition of reductive dehalogenase genes through horizontal gene transfer by *Dehalococcoides ethenogenes* strain 195. *Appl Environ Microbiol* 2005, **71**(6):2955-61.
32. Krajmalnik-Brown R, Sung Y, Ritalahti KM, Saunders FM, Löffler FE: Environmental distribution of the trichloroethene reductive dehalogenase gene (*tceA*) suggests lateral gene transfer among *Dehalococcoides*. *FEMS Microbiol Ecol* 2007, **59**:206-14.
33. Wozniak RAF, Waldor MK: Integrative and conjugative elements: mosaic mobile genetic elements enabling dynamic lateral gene flow. *Nat Rev Microbiol* 2010, **8**(8):552-63.
34. Ito T, Katayama Y, Hiramatsu K: Cloning and nucleotide sequence determination of the entire *mec* DNA of pre-methicillin-resistant *Staphylococcus aureus* N315. *Antimicrob Agents Chemother* 1999, **43**(6):1449-58.
35. Jansen R, van Embden JDA, Gaastera W, Schouls LM: Identification of genes that are associated with DNA repeats in prokaryotes. *Mol Microbiol* 2002, **43**(6):1565-75.
36. McGlynn P, Lloyd RG: Recombinational repair and restart of damaged replication forks. *Nat Rev Mol Cell Biol* 2002, **3**(11):859-70.
37. Hayes F, Barilla D: The bacterial segrosome: a dynamic nucleoprotein machine for DNA trafficking and segregation. *Nat Rev Microbiol* 2006, **4**(2):133-43.
38. Schumacher MA, Funnell BE: Structures of ParB bound to DNA reveal mechanism of partition complex formation. *Nature* 2005, **438**(7067):516-9.
39. Toussaint A: The DNA modification function of temperate phage Mu-1. *Virology* 1976, **70**:17-27.
40. Allet B, Bukhari AI: Analysis of bacteriophage mu and lambda-mu hybrid DNAs by specific endonucleases. *J Mol Biol* 1975, **92**(4):529-40.
41. Swinton D, Hattman S, Crain PF, Cheng CS, Smith DL, McCloskey JA: Purification and characterization of the unusual deoxynucleoside, alpha-N-(9-beta-D-2'-deoxyribofuranosyl)purin-6-yl)glycinamide, specified by the phage Mu modification function. *Proc Natl Acad Sci USA* 1983, **80**(24):7400-4.
42. Hayes CS, Keiler KC: Beyond ribosome rescue: tmRNA and co-translational processes. *FEBS Lett* 2010, **584**(2):413-9.
43. Mao C, Bhardwaj K, Sharkady S, Fish R, Driscoll T, Wower J, Zwieb C, Sobral B, Williams K: Variations on the tmRNA gene. *RNA Biol* 2009, **6**(4).
44. Charif D, Lobry J: SeqinR 1.0-2: a contributed package to the R project for statistical computing devoted to biological sequences retrieval and analysis. In *Structural approaches to sequence evolution: Molecules, networks,*

- populations, *Biological and Medical Physics, Biomedical Engineering*. Edited by: U Bastolla HR M Porto, Vendruscolo M. New York: Springer Verlag; 2007:207-232, [ISBN: 978-3-540-35305-8].
45. 2011 [http://services.cbu.uib.no/tools/kaks].
 46. Moe WM, Yan J, Nobre MF, da Costa MS, Rainey FA: *Dehalogenimonas lykanthroporepellens* gen. nov., sp. nov., a reductively dehalogenating bacterium isolated from chlorinated solvent-contaminated groundwater. *Int J Syst Evol Microbiol* 2009, **59**(11):2692-7.
 47. Strous M, Jetten MSM: Anaerobic oxidation of methane and ammonium. *Annu Rev Microbiol* 2004, **58**:99-117.
 48. Pollard PC, Moriarty DJ: Validity of the tritiated thymidine method for estimating bacterial growth rates: measurement of isotope dilution during DNA synthesis. *Applied and environmental microbiology* 1984, **48**(6):1076-1083.
 49. Brock T: Microbial growth rates in nature. *Bacteriological Reviews* 1971, **35**:39-58.
 50. Keppler F, Borchers R, Pracht J, Rheinberger S, Scholer HF: Natural formation of vinyl chloride in the terrestrial environment. *Environmental Science & Technology* 2002, **36**(11):2479-2483.
 51. Hagège J, Pernodet JL, Sezonov G, Gerbaud C, Friedmann A, Guéroux M: Transfer functions of the conjugative integrating element pSAM2 from *Streptomyces ambifaciens*: characterization of a *kil-kor* system associated with transfer. *J Bacteriol* 1993, **175**(17):5529-38.
 52. Hagège J, Pernodet JL, Friedmann A, Guéroux M: Mode and origin of replication of pSAM2, a conjugative integrating element of *Streptomyces ambifaciens*. *Molecular Microbiology* 1993, **10**(4):799-812.
 53. Maphosa F, Smidt H, de Vos WM, Röling WFM: Microbial community- and metabolite dynamics of an anoxic dechlorinating bioreactor. *Environ Sci Technol* 2010, **44**(13):4884-90.
 54. Pavlovic G, Burrus V, Gintz B, Decaris B, Guédou G: Evolution of genomic islands by deletion and tandem accretion by site-specific recombination: ICESt1-related elements from *Streptococcus thermophilus*. *Microbiology (Reading, Engl)* 2004, **150**(Pt 4):759-74.
 55. Futagami T, Morono Y, Terada T, Kaksanen AH, Inagaki F: Dehalogenation activities and distribution of reductive dehalogenase homologous genes in marine subsurface sediments. *Appl Environ Microbiol* 2009, **75**(21):6905-9.
 56. Gribble GW: The diversity of naturally produced organohalogenes. *Chemosphere* 2003, **52**(2):289-297.
 57. Katayama Y, Ito T, Hiramatsu K: A new class of genetic element, *Staphylococcus* Cassette Chromosome *mec*, encodes methicillin resistance in *Staphylococcus aureus*. *Antimicrob Agents Chemother* 2000, **44**(6):1549-55.
 58. Hanssen AM, Sollid JUE: SCCmec in *Staphylococci* : genes on the move. *FEMS Immunol Med Microbiol* 2006, **46**:8-20.
 59. Noto MJ, Kreiswirth BN, Monk AB, Archer GL: Gene acquisition at the insertion site for SCCmec, the genomic island conferring methicillin resistance in *Staphylococcus aureus*. *J Bacteriol* 2008, **190**(4):1276-83.
 60. de Lencastre H, Oliveira D, Tomasz A: Antibiotic resistant *Staphylococcus aureus*: a paradigm of adaptive power. *Curr Opin Microbiol* 2007, **10**(5):428-35.
 61. Nübel U, Roumagnac P, Feldkamp M, Song JH, Ko KS, Huang YC, Coombs G, Ip M, Westh H, Skov R, Struelens MJ, Goering RV, Strommenger B, Weller A, Witte W, Achtman M: Frequent emergence and limited geographic dispersal of methicillin-resistant *Staphylococcus aureus*. *Proc Natl Acad Sci USA* 2008, **105**(37):14130-5.
 62. Chambers HF, Deleo FR: Waves of resistance: *Staphylococcus aureus* in the antibiotic era. *Nat Rev Microbiol* 2009, **7**(9):629-41.
 63. Harris SR, Feil EJ, Holden MTG, Quail MA, Nickerson EK, Chantratita N, Gardete S, Tavares A, Day N, Lindsay JA, Edgeworth JD, de Lencastre H, Parkhill J, Peacock SJ, Bentley SD: Evolution of MRSA during hospital transmission and intercontinental spread. *Science* 2010, **327**(5964):469-74.
 64. Wang L, Archer GL: Roles of CcrA and CcrB in excision and integration of staphylococcal cassette chromosome *mec*, a *Staphylococcus aureus* genomic island. *J Bacteriol* 2010, **192**(12):3204-12.
 65. Barlow M: What antimicrobial resistance has taught us about horizontal gene transfer. *Methods Mol Biol* 2009, **532**:397-411.
 66. Montero CI, Lewis DL, Johnson MR, Connors SB, Nance EA, Nichols JD, Kelly RM: Colocation of genes encoding a tRNA-mRNA hybrid and a putative signaling peptide on complementary strands in the genome of the hyperthermophilic bacterium *Thermotoga maritima*. *J Bacteriol* 2006, **188**(19):6802-7.
 67. West K, Johnson D, Hu P, Desantis T, Brodie E, Lee P, Feil H, Andersen G, Zinder S, Alvarez-Cohen L: Comparative Genomics of *Dehalococcoides ethenogenes* 195 and an Enrichment Culture Containing Unsequenced *Dehalococcoides* Strains. *Appl Environ Microbiol* 2008, **74**(11):3533-3540.
 68. Gibson DG, Young L, Chuang RY, Venter JC, Hutchison CA, Smith HO: Enzymatic assembly of DNA molecules up to several hundred kilobases. *Nat Methods* 2009, **6**(5):343-5.
 69. Edgar RC: MUSCLE: multiple sequence alignment with high accuracy and high throughput. *Nucleic Acids Res* 2004, **32**(5):1792-7.
 70. Stamatakis A: RAXML-VI-HPC: maximum likelihood-based phylogenetic analyses with thousands of taxa and mixed models. *Bioinformatics* 2006, **22**(21):2688-90.
 71. Shapiro B, Rambaut A, Drummond AJ: Choosing appropriate substitution models for the phylogenetic analysis of protein-coding sequences. *Mol Biol Evol* 2006, **23**:7-9.
 72. Huson DH, Bryant D: Application of phylogenetic networks in evolutionary studies. *Mol Biol Evol* 2006, **23**(2):254-67.
 73. Eddy SR: Profile hidden Markov models. *Bioinformatics* 1998, **14**(9):755-63.
 74. Ochman H, Elwyn S, Moran NA: Calibrating bacterial evolution. *PNAS* 1999, **96**(22):12638-43.
 75. Drake JW, Charlesworth B, Charlesworth D, Crow JF: Rates of spontaneous mutation. *Genetics* 1998, **148**(4):1667-86.
 76. Nusbaum C, Ohsumi TK, Gomez J, Aquadro J, Victor TC, Warren RM, Hung DT, Birren BW, Lander ES, Jaffe DB: Sensitive, specific polymorphism discovery in bacteria using massively parallel sequencing. *Nat Methods* 2009, **6**:67-9.
 77. R Development Core Team: *R: A Language and Environment for Statistical Computing* R Foundation for Statistical Computing, Vienna, Austria; 2009, [ISBN 3-900051-07-0].
 78. Laslett D, Canback B: ARAGORN, a program to detect tRNA genes and tmRNA genes in nucleotide sequences. *Nucleic Acids Res* 2004, **32**:11-6.
 79. Hofacker IL, Fekete M, Stadler PF: Secondary structure prediction for aligned RNA sequences. *J Mol Biol* 2002, **319**(5):1059-66.
 80. Bernhart SH, Hofacker IL, Will S, Gruber AR, Stadler PF: RNAalifold: improved consensus structure prediction for RNA alignments. *BMC Bioinformatics* 2008, **9**:474.
 81. Knudsen B, Hein J: Pfold: RNA secondary structure prediction using stochastic context-free grammars. *Nucleic Acids Res* 2003, **31**(13):3423-8.
 82. Seemann SE, Gorodkin J, Backofen R: Unifying evolutionary and thermodynamic information for RNA folding of multiple alignments. *Nucleic Acids Res* 2008, **36**(20):6355-62.
 83. Kuo CH, Ochman H: Inferring clocks when lacking rocks: the variable rates of molecular evolution in bacteria. *Biol Direct* 2009, **4**:35.
 84. Marchler-Bauer A, Anderson JB, Chitsaz F, Derbyshire MK, DeWeese-Scott C, Fong JH, Geer LY, Geer RC, Gonzales NR, Gwadz M, He S, Hurwitz DI, Jackson JD, Ke Z, Lanczycki CJ, Liebert CA, Liu C, Lu F, Lu S, Marchler GH, Mullokandov M, Song JS, Tasneem A, Thanki N, Yamashita RA, Zhang D, Zhang N, Bryant SH: CDD: specific functional annotation with the Conserved Domain Database. *Nucleic Acids Res* 2009, **37**: Database: D205-10.
 85. Altschul SF, Madden TL, Schäffer AA, Zhang J, Zhang Z, Miller W, Lipman DJ: Gapped BLAST and PSI-BLAST: a new generation of protein database search programs. *Nucleic Acids Res* 1997, **25**(17):3389-402.
 86. Tsubakishita S, Kuwahara-Arai K, Baba T, Hiramatsu K: Staphylococcal cassette chromosome *mec*-like element in *Macrocooccus caseolyticus*. *Antimicrob Agents Chemother* 2010, **54**(4):1469-75.
 87. Konstantinidis K, Delong E: Genomic patterns of recombination, clonal divergence and environment in marine microbial populations. *ISME J* 2008.
 88. He J, Sung Y, Krajalnik-Brown R, Ritalahti KM, Löffler FE: Isolation and characterization of *Dehalococcoides* sp. strain FL2, a trichloroethene (TCE)- and 1,2-dichloroethene-respiring anaerobe. *Environ Microbiol* 2005, **7**(9):1442-50.
 89. Ellis D, Lutz E, Odom J, Buchanan R, Bartlett C, Lee M, Harkness M, Dewerd K: Bioaugmentation for accelerated in situ anaerobic bioremediation. *Environ Sci Technol* 2000, **34**(11):2254-2260.
 90. Freedman DL, Gossett JM: Biological reductive dechlorination of tetrachloroethylene and trichloroethylene to ethylene under methanogenic conditions. *Appl Environ Microbiol* 1989, **55**(9):2144-51.

91. Nowak J, Kirsch N, Hegemann W, Stan HJ: **Total reductive dechlorination of chlorobenzenes to benzene by a methanogenic mixed culture enriched from Saale river sediment.** *Appl Microbiol Biotechnol* 1996, **45**(5):700-709.
92. Adrian L, Manz W, Szewzyk U, Görisch H: **Physiological characterization of a bacterial consortium reductively dechlorinating 1,2,3- and 1,2,4-trichlorobenzene.** *Appl Environ Microbiol* 1998, **64**(2):496-503.
93. Adrian L, Szewzyk U, Wecke J, Görisch H: **Bacterial dehalorespiration with chlorinated benzenes.** *Nature* 2000, **408**(6812):580-583.
94. He J, Sung Y, Dollhopf ME, Fathepure BZ, Tiedje J, Löffler FE: **Acetate versus hydrogen as direct electron donors to stimulate the microbial reductive dechlorination process at chloroethene-contaminated sites.** *Environ Sci Technol* 2002, **36**(18):3945-3952.
95. Rosner B, McCarty P, Spormann A: **In Vitro Studies on Reductive Vinyl Chloride Dehalogenation by an Anaerobic Mixed Culture.** *Appl Environ Microbiol* 1997, **63**(11):4139-4144.
96. Cupples , Spormann , McCarty : **Growth of a *Dehalococcoides*-like microorganism on vinyl chloride and cis-dichloroethene as electron acceptors as determined by competitive PCR.** *Appl Environ Microbiol* 2003, **69**(2):953-959.

doi:10.1186/1471-2164-12-287

Cite this article as: McMurdie et al.: Site-Specific Mobilization of Vinyl Chloride Respiration Islands by a Mechanism Common in *Dehalococcoides*. *BMC Genomics* 2011 **12**:287.

**Submit your next manuscript to BioMed Central
and take full advantage of:**

- Convenient online submission
- Thorough peer review
- No space constraints or color figure charges
- Immediate publication on acceptance
- Inclusion in PubMed, CAS, Scopus and Google Scholar
- Research which is freely available for redistribution

Submit your manuscript at
www.biomedcentral.com/submit

