



Article

# Skim-Sequencing Based Genotyping Reveals Genetic Divergence of the Wild and Domesticated Population of Black Tiger Shrimp (*Penaeus monodon*) in the Indo-Pacific Region

Li Lian Wong<sup>1,\*</sup>, Zulaikha Mat Deris<sup>1,†</sup>, Yoji Igarashi<sup>2</sup>, Songqian Huang<sup>3</sup>, Shuichi Asakawa<sup>3</sup>, Qasim Ayub<sup>4</sup>, Shu Yong Lim<sup>4</sup>, Mhd Ikhwanuddin<sup>5</sup> , Shumpei Iehata<sup>6</sup>, Kazutoshi Okamoto<sup>7</sup>, Mariom<sup>8</sup> and Md Asaduzzaman<sup>3,9,\*</sup> 

- <sup>1</sup> Institute of Marine Biotechnology, Universiti Malaysia Terengganu, Kuala-Terengganu 21030, Terengganu, Malaysia; zulaikhamd27@gmail.com
  - <sup>2</sup> Graduate School of Bioresources, Mie University, Kurimamachiya 1577, Tsu, Mie 514-8507, Japan; igarashi@bio.mie-u.ac.jp
  - <sup>3</sup> Department of Aquatic Bioscience, The University of Tokyo, 1-1-1 Yayoi, Bunkyo-ku, Tokyo 113-8657, Japan; huangsongqian0115@gmail.com (S.H.); asakawa@mail.ecc.u-tokyo.ac.jp (S.A.)
  - <sup>4</sup> School of Science, Monash University Malaysia Genomics Facility, Bandar Sunway 47500, Selangor, Malaysia; qasim.ayub@monash.edu (Q.A.); lim.shuyong@monash.edu (S.Y.L.)
  - <sup>5</sup> Institute of Tropical Aquaculture and Fisheries, Universiti Malaysia Terengganu, Kuala-Terengganu 21030, Terengganu, Malaysia; ikhwanuddin@umt.edu.my
  - <sup>6</sup> Faculty of Fisheries and Food Science, Universiti Malaysia Terengganu, Kuala-Terengganu 21030, Terengganu, Malaysia; shumpei@umt.edu.my
  - <sup>7</sup> Shizuoka Prefectural Research Institute of Fishery and Ocean, Yaizu-shi, Shizuoka 425-0032, Japan; kazutoshi1\_okamoto@pref.shizuoka.lg.jp
  - <sup>8</sup> Department of Fisheries Biology and Genetics, Faculty of Fisheries, Bangladesh Agricultural University, Mymensingh 2202, Bangladesh; mariom.bau@gmail.com
  - <sup>9</sup> Department of Marine Bioresource Science, Faculty of Fisheries, Chattogram Veterinary and Animal Sciences University, Khulshi 4225, Chattogram, Bangladesh
- \* Correspondence: lilian@umt.edu.my (L.L.W.); asaduzzaman@cvasu.ac.bd (M.A.); Tel.: +60-(96)-683671 (L.L.W.); +88-017-1741-2049 (M.A.)
- † These authors contribute equally to this work.

Received: 3 August 2020; Accepted: 2 September 2020; Published: 7 September 2020



**Abstract:** The domestication of a wild-caught aquatic animal is an evolutionary process, which results in genetic discrimination at the genomic level in response to strong artificial selection. Although black tiger shrimp (*Penaeus monodon*) is one of the most commercially important aquaculture species, a systematic assessment of genetic divergence and structure of wild-caught and domesticated broodstock populations of the species is yet to be documented. Therefore, we used skim sequencing (SkimSeq) based genotyping approach to investigate the genetic structure of 50 broodstock individuals of *P. monodon* species, collected from five sampling sites ( $n = 10$  in each site) across their distribution in Indo-Pacific regions. The wild-caught *P. monodon* broodstock population were collected from Malaysia (MS) and Japan (MJ), while domesticated broodstock populations were collected from Madagascar (MMD), Hawaii, HI, USA (MMO), and Thailand (MT). After various filtering process, a total of 194,259 single nucleotide polymorphism (SNP) loci were identified, in which 4983 SNP loci were identified as putatively adaptive by the pcadapt approach. In both datasets, pairwise  $F_{ST}$  estimates high genetic divergence between wild and domesticated broodstock populations. Consistently, different spatial clustering analyses in both datasets categorized divergent genetic structure into two clusters: (1) wild-caught populations (MS and MJ), and (2) domesticated populations (MMD, MMO and MT). Among 4983 putatively adaptive SNP loci, only 50 loci were observed to be in the coding region. The gene ontology (GO) and Kyoto Encyclopedia of Genes and Genomes (KEGG)

analyses suggested that non-synonymous mutated genes might be associated with the energy production, metabolic functions, respiration regulation and developmental rates, which likely act to promote adaptation to the strong artificial selection during the domestication process. This study has demonstrated the applicability of SkimSeq in a highly duplicated genome of *P. monodon* specifically, across a range of genetic backgrounds and geographical distributions, and would be useful for future genetic improvement program of this species in aquaculture.

**Keywords:** low coverage sequencing; population structure; genetic improvement; outlier approach; domesticated population; *Penaeus monodon*

---

## 1. Introduction

The world production of inland aquaculture reached 51.3 million tonnes in 2018, with their dominant production of 97.2% comprising of finfish, while mariculture produced 30.8 million tonnes, with 56.2% represented by mollusc [1]. Marine shrimp industries yielded almost 4 million tonnes in the same year, playing the role as the major supply of shrimps in the global market [2]. While disease outbreak and price fluctuations in the global trade have highly impacted the production and socio-economic development in many countries, the surging prices and shortage of good quality shrimp broodstocks have further impeded the shrimp industry [1,3]. In fact, shrimp farming is heavily dependent on wild-caught broodstocks or domesticated broodstocks with reduced quality, due to repeated spawning programs [4–6]. To ensure sustainable seed supply, standardized benchmarks for quality and quantity assessment of broodstocks are essential [7].

Population structure is the organization of genetic diversity, and it is influenced by multiple evolutionary process, such as genetic drift, mutation, gene flow, natural selection and demographic history [8,9]. It is estimated by parameters like genetic differentiation, variant alleles frequencies, population size and population dynamic [10–13]. Low number of breeders and inadvertent or mass selection of prospective shrimp broodstocks can result in rapid reduction of genetic diversity [14–19]. The loss of genetic variation, reduction in effective population size and accumulation of inbreeding effects over several generations of selective breeding can compromise the effectiveness of genetic improvement programs [20–22]. Although the magnitude of inbreeding effects are variable between different traits, genetic structure of a population and environmental interactions, the overall mean phenotypic value of traits associated with reproductive fitness and physiological efficiency is often reduced [23–25]. Therefore, adequate levels of genetic variation are vital for the maintenance of the gene pool in cultured shrimp with minimal effects of inbreeding depression and enhanced capacity in responding to environmental changes [26,27]. Long-term crossbreeding programs may help to achieve a balance between continuous genetic gains and reduced risk of inbreeding depression [6,28].

*Penaeus monodon*, commonly known as black tiger shrimp is widely distributed across the Indo-Pacific region, and is one of the most commercially important aquaculture species [29,30]. To date, population structure studies of *P. monodon* have only been limited to several traditional markers such as mtDNA RFLP [29], allozymes [31], microsatellite [32,33] and Sanger sequencing of various genes including mtCR (mtDNA control region) [34,35], mitochondria DNA [36] and elongation factor-1a [37], while next generation sequencing (NGS) approaches are yet to be explored for this species in this aspect. In fact, NGS have been well proven in revealing fine-scale population structure and phylogeographic divergence in numerous aquatic species [38–44].

Skim sequencing (SkimSeq) is one of the less complex NGS methods, which uses low coverage (1–10X) whole genome sequencing of multiple individuals for high resolution genotyping [45–48]. SkimSeq is less laborious with fewer complex steps, is unbiased towards specific alleles, is capable of SNPs detection, which enables informative sampling and validation of the genome [49–53].

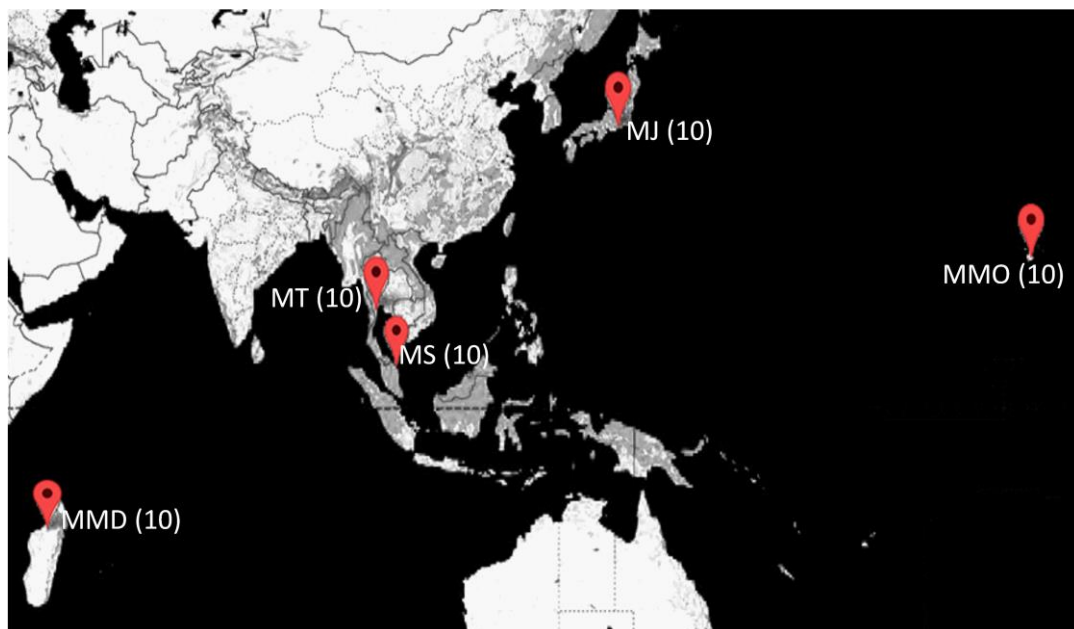
This genotyping by sequencing approach is useful in population study with unknown parental genome information to generate detailed diversity analysis and marker-assisted selections [45,53].

Given that the SkimSeq is known as low coverage genome sequencing approach [38], and so far have only been applied in plant genomics research [45–48], we have chosen this technique to generate high resolution sequence dataset, as reported in previous studies, for the first aquatic invertebrate with small samples size. To explore the genetic diversity, population structure and discover the novel molecular markers of *P. monodon* from different origins (wild vs. domesticated), we genetically assayed 50 individuals with the SkimSeq approach using the short read Illumina sequencing platform. This study aimed to: (i) investigate the genetic structure of wild and domesticated populations, (ii) quantify the genetic differentiation between populations and (iii) examine the presence of putative loci causing the genetic variation. The genomic analyses and genetic resource acquired from this study will be useful to support future genetic improvements in *P. monodon* culture and brood-stock selection activities.

## 2. Materials and Methods

### 2.1. Sample Collection

A total of 50 *P. monodon* individuals consisting of both domesticated and wild-caught broodstocks were collected from five sampling sites (10 individuals from each site and of same family) across Indo-Pacific regions (Figure 1), and the sampling details are listed in Table 1. Among the five locations, *P. monodon* broodstock populations from MMD (Madagascar), MT (Thailand) and MMO (Hawaii, HI, USA) were obtained from domesticated shrimp farms, while MS (Malaysia) and MJ (Japan) were caught from the wild. The muscle tissues were extracted from broodstock individuals and preserved in 99.5% *v/v* ethanol and stored at  $-20^{\circ}\text{C}$  until DNA extraction. All samples were collected in accordance with the animal care and tissue collection protocol as approved by the Universiti Malaysia Terengganu's Animal Care and Biosafety Committee.



**Figure 1.** Sampling sites of five broodstock populations of *Penaeus monodon* in the Indo-Pacific region. MMD (Madagascar), MT (Thailand) and MMO (Hawaii, HI, USA) represent domesticated populations, while MS (Malaysia) and MJ (Japan) are wild-caught populations. Values in parentheses denote the sample size for each population.

**Table 1.** Summary of the sampling information of *Penaeus monodon* population collected from the different Indo-Pacific regions.

Locations	Location Abbreviation	Broodstock Source	Latitudes	Longitudes	Year
Mahajamba, Madagascar	MMD	Domesticated	16°02'52.8"	47°11'38.0"	2018
Hawaii, HI, USA	MMO	Domesticated	19°42'55.9"	156°02'34.6"	2018
Petchaburi Province, Thailand	MT	Domesticated	12°58'06.5"	99°37'48.0"	2019
Setiu Wetland, Malaysia	MS	Wild	5°40'38.3"	102°42'36.8"	2019
Shizuoka, Japan	MJ	Wild	34°56'25.9"	138°02'17.9"	2018

## 2.2. DNA Extraction and Library Preparation

Genomic DNA of *P. monodon* broodstocks were isolated from the muscle tissues using Wizard Genomic DNA Purification Kit following the manufacturer's protocols (Promega, San Luis Obispo, CA, USA). The concentration and purity of the extracted genomic DNA were quantified based on A260/280 nm ratio using BioDrop (BioDrop, Cambridge, UK). DNA quantifications were conducted using real-time PCR fluorescence measurements of double stranded DNA [54] and the Quant-it kit (Life Technologies, Foster City, CA, USA). Genomic DNA was fragmented into the insert size of 350 bp using with TruSeq® DNA PCR-Free Library Prep Kit (Illumina Inc., San Diego, CA, USA) and Covaris M220 (Covaris Inc., Woburn, MA, USA), following the kits' protocol at Monash University Malaysia Genomics Facility (Selangor, Malaysia). Accurate quantification and quality checking of the DNA libraries were conducted using the KAPA Library Quantification Kit (Roche Sequencing and Life Science, Indianapolis, IN, USA), while qualitative estimation of the libraries was performed by Agilent Technologies 2100 Bioanalyzer (Agilent Technologies Inc., Santa Clara, CA, USA). Detailed QC parameters, including library cluster density, library complexity, percent duplication, GC bias, and index representation were generated on the MiSeq system (Illumina Inc., Foster City, CA, USA) to ensure a uniform concentration of all samples prior to SkimSeq. The pooled library was denatured based on the Illumina NextSeq denaturation guideline and paired-end sequencing was carried out using NextSeq 500/550 High Output v2 300 cycles kit on a NextSeq 500 (Illumina Inc., Foster City, CA, USA).

## 2.3. Sequence Assembly, Filtering and SNPs Discovery

From the Illumina platform, 151 base-pair paired-end ( $2 \times 151$ ) sequencing reads were obtained in FASTQ format. Sequencing reads matching to PhiX DNA sequences were first removed by aligning reads against the PhiX DNA sequence using Bowtie 2 software version 2.2.3 (<http://bowtie.cbcb.umd.edu>) [55,56]. The cleaned reads were then subjected to Illumina sequencing adapter trimming and base quality ( $Q \geq 20$ ) trimming using PEAT software version 1.2.4 (<http://jhhung.github.io/PEAT>) [57], to ensure that only good quality bases derived from the sample were further analyzed. Trimmed reads of less than 36 bp were also discarded using Trimmomatic software version 0.36 (<http://www.usadellab.org/cms/index.php?page=trimmomatic>) [58]. The quality trimming and filtering analyses of the whole genome SkimSeq data revealed that each of the 50 individuals of *P. monodon* had about 30% low-quality reads, which were discarded before *de novo* genome assembly (Table S1). In the present study, the good quality reads of all samples were assembled collectively using SOAPdenovo software version 2-r240 (<ftp://public.genomics.org.cn/BGI/SOAPdenovo2>) [59] into a set of scaffolds. All samples (except MJ10) had greater than 91% mapping rate to the assembled scaffold, indicating that the assembled scaffold is able to comprehensively represent all samples (Table S2). The calculated coverage of SkimSeq data in different samples was found to vary from 1.3 to 1.8X. Subsequently, BLAST+ version 2.2.31 (<ftp://ftp.ncbi.nlm.nih.gov/blast/executables/blast+/LATEST>) [60] was used to identify the coding protein sequences from the order of Decapoda and the full SwissProt database [61] to the assembled scaffold sequences. The good quality sequencing reads were aligned to the assembled scaffold sequences using BWA version 0.7.12-r1039 (<http://maq.sourceforge.net>) [62]. The reads alignments were sorted,

and potential PCR duplicate reads were identified and marked using Picard Tools version 2.9.0. The reads alignments were analyzed to identify variants using FreeBayes version 1.2.0-2-g29c4002 [63] to find small polymorphisms, specifically SNPs (single-nucleotide polymorphisms), indels (insertions and deletions), MNPs (multi-nucleotide polymorphisms) and complex events (composite insertion and substitution events) smaller than the length of a short-read sequencing alignment. The outputs includes a total number of 17,226,908 raw variants loci in the VCF file format. The identified variants coordinates were compared to the gene coordinates obtained from genome annotation using vcfanno software version 0.2.9 (<https://github.com/brentp/vcfanno>) [64]. If a variant fell within the region for a protein-genome match, the information of the protein name was transferred to the variants as an annotation.

SNP profiles were analyzed and visualized using SNPRelate version 1.16.0 [65], to exclude outlier samples with inconsistent genetic profiles. Likewise, samples containing a completeness of data of less than 80% among the remaining loci, a minimum quality score with minor allele frequency below threshold, and a mean depth per genotype lower than 20 were removed from the dataset. Out of the 50 *P. monodon*, 5 individual sequences (MJ10, MS9, MMO1, MMO7 and MMO16) were removed from the dataset due to the inconsistent SNP profiles and/or greater than 20% missing genotypes, while the remaining 45 samples were used for all downstream analyses. Furthermore, variants filtering was conducted using VCFtools software version 0.1.16 (<https://vcftools.github.io/>) [66] and BCFtools software version 1.9 (<http://samtools.github.io/bcftools/bcftools.html>). At first, the variants filtering steps included the removal of complex indels, SNPs with more than two alleles, and composite insertion and substitution events. Further filtering steps included the removal of sites with less than 5% overall minor allele frequency, missing genotypes in >90% of the samples in any population, and SNP sites with genotypes not in Hardy-Weinberg equilibrium in any population (PHWE < 0.001). After all filtering steps, a total of 194,259 individual SNP loci remained in the dataset. To detect putatively adaptive SNP loci among different wild and domesticated broodstock populations of *P. monodon*, we identified outlier SNPs from the 194,259 filtered individual SNP loci using pcadapt version 3.0.2 [67,68]. The “pcadapt” approach performs a principal component analysis and computes the *p*-values of each locus to detect adaptive loci. Default parameters were used for pcadapt analysis, and the “number\_of\_samples” parameter was set to 5 (a number equal to the sampled collections). The false discovery rate (FDR) threshold value set to 0.05, to control the false positive. Finally, an overall SNP loci dataset and putatively adaptive SNP loci dataset were created and used for all down-stream spatial clustering analyses.

#### 2.4. Power Analysis

A power analysis using POWSIM v. 4.1 [69] was carried out to determine the power of all SNP loci and putatively adaptive SNP loci datasets derived from the SkimSeq approach. This program evaluates the statistical power of genetic homogeneity in individual species and allows the user to adjust a number of user-defined parameters. To calculate the power of our sampling design, the number of subpopulations was set to five (equals to the number of our collection sites), with 10 samples per subpopulation (number of the collected individuals per sampling site) for both all of the SNP loci and the putatively adaptive SNP loci datasets. The effective population size of the subpopulations were set to 1000, 2000 and 3000, and generation time (*t*) was adjusted to assess power at multiple  $F_{ST}$  values (10 and 20 generations), as described previously [39]. As  $F_{ST}$  in POWSIM assumes the independence of the subpopulations, power was expressed as the proportion of significant outcomes for 1000 alterations per batch and a statistically significant test ( $p < 0.05$ ).

#### 2.5. Genetic Variation Analysis

The filtered data was imported as a genind object into R and down-stream spatial clustering analyses were largely conducted using the adegenet v2.0.1 R package (<http://cran.r-project.org/mirrors.html>) [70]. The GenoDive version 3.0 (Universiteit van Amsterdam, Amsterdam, The Netherlands)

was used to conduct an analysis of molecular variance (AMOVA) on both datasets [71]. The GenoDive was also used for significance testing of pairwise  $F_{ST}$  to determine the genetic differences between collection sites for the all SNP loci and outlier datasets using the default settings, with the samples grouped by collection sites. Clustering analysis, discriminant analysis of the principal component (DAPC), was conducted using the adegenet R package (Universite' de Lyon, UMR 5558, Lyon, France) on all SNP loci dataset and outlier datasets. Neighbor-joining trees were generated using all the SNP loci dataset and outlier datasets using Nei's genetic distance method. The Bayesian clustering method, implemented in the STRUCTURE software v. 2.3.4 (Stanford University, Stanford, CA, USA), was used to genetically assign individuals to clusters [72]. Simulations were run for 100,000 steps, following a burn-in period of 100,000 steps, considering values of K (number of clusters) from one to 15, with 10 replications for each value of K. The analysis was performed using an admixture, correlated allele frequencies, and no prior information on the sampling location or morphological species. For each individual, the program identifies the fraction of the genome that belongs to each one of the clusters. The rate of change in the log likelihood between successive K values was also estimated [73]. The calculations were performed using STRUCTURE HARVESTER [74]. The clusters of the estimated population structure were visualized using CLUMPAK [75].

### 2.6. GO and KEGG Enrichment Analysis of Putatively Adaptive SNP Loci

To identify the genes encoded within the adaptive SNP loci, a homology search program was applied for each putatively adaptive SNP locus with the genome sequences available for the *L. vannamei* in the NCBI database. For each detected 4983 SNP loci, flanking region of upstream and downstream 100 bp was extracted from the reference nucleotide sequence. Homology search between this extracted sequence set and CDS amino acid sequences of *L. vannamei* was performed under the homology threshold of  $e\text{-value} = 1 \times 10^{-5}$ . Homology search program of the SNP flanking sequences showed that the total of 50 coding regions containing nonsynonymous mutations were encoded by the putatively adaptive SNP loci. To know the functional distribution of the genes encoded within the adaptive SNP loci, gene ontology (GO) and Kyoto Encyclopedia of Genes and Genomes (KEGG) pathway enrichment analysis were performed using KOBAS 3.0 software (<http://kobas.cbi.pku.edu.cn/kobas3>) and visualized with R [76]. The hypergeometric test was used to identify the significant GO and KEGG pathways ( $p < 0.05$ ).

### 2.7. Data Accessibility

Our raw data for 50 individuals were submitted to the DDBJ (<https://ddbj.nig.ac.jp>), with the DRA accession number: DRA010601. The data will be publicly available from 10 September 2020.

## 3. Results

### 3.1. Genome Assembly, Annotation and Quality Filtering of SNP Loci

The de novo assembly of good quality data generated a total of 6,425,442 scaffolds with the largest and smallest scaffold size of 15,300 bp and 100 bp, respectively, and totaling 1,531,786,734 base pairs in length (Table 2). Genome annotation analyses displayed that 440,707 scaffolds matched with at least one protein sequence, and 107,063 Decapoda and 42,351 SwissPort protein sequences were matched to the scaffold (Table 2). A total of 17,226,908 variant sites were identified across 3,651,235 scaffolds. Among 17,226,908 variant sites, 1,347,070 were annotated with sequence similarity to Decapoda or SwissProt protein sequences (Table 2).

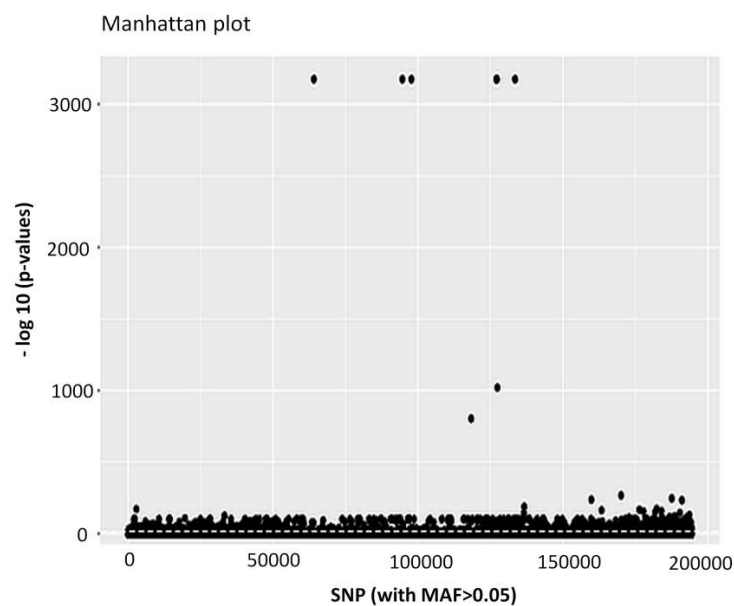
Among the 17,226,908 variant sites, 10,212,187 SNP loci were retained after removing indels, MNPs and SNP sites with less than 5% minor allele frequency (Table 3). After all of the filtering steps were complete, a total of 194,259 individual SNP loci remained in the dataset. Out of the 194,259 polymorphic SNPs loci, 4983 SNP loci were identified as outliers and putatively under positive selection by the pcdapt approach (Table 3, Figure 2).

**Table 2.** Summary of the genome assembly, genome annotation, variants identifications and variant annotation results obtained from the skim sequencing (SkimSeq) data of *Penaeus monodon* broodstock population collected from different Indo-Pacific regions.

Genome Assembly Statistics	
Number of scaffolds	6,425,442
Size of largest scaffolds (bp)	15,300
Size of smallest scaffolds (bp)	100
Total scaffold size (bp)	1,531,786,734
Scaffold N50	306
Genome annotation statistics	
Number of Scaffolds with at least one protein sequence match	440,707
Number of Decapoda (order) protein sequences with match to scaffold	107,063
Number of SwissProt protein sequences with match to scaffold	42,351
Variant identification results	
Number of Scaffolds with at least one variant site	3,651,235
Total number of variants	17,226,908
Variant annotation results	
Total number of variants with annotations	1,347,070
Number of variants annotated with Decapoda proteins	1,339,785
Number of variants annotated with SwissProt proteins	142,710

**Table 3.** Number of single nucleotide polymorphism (SNP) loci remained after each quality filtering steps for dataset using all sampling groups.

Filtering Steps	Number of Loci
Total number of raw variants loci	17,226,908
Remaining SNP loci after excluded indels and MNP sites	13,530,393
Remaining SNP loci after excluded sites with MAF < 0.05	10,212,187
Remaining SNP loci after excluded sites with missing genotypes in >80% of the samples in any population	417,048
Remaining SNP loci after excluded sites with genotypes not in Hardy-Weinberg equilibrium in any population (PHWE < 0.001)	328,028
SNP loci remained after all quality filtering	194,259
Number of putatively adaptive SNP loci	4983



**Figure 2.** Separation of the putatively adaptive panels of single nucleotide polymorphisms (SNPs) loci, based on the pcadapt approaches. Among the 194,259 SNP loci, the pcadapt approach detected 4983 SNPs, as putative adaptive loci (above the dotted line).

### 3.2. Power Analysis

In all of the SNP loci dataset, power was somewhat dependent on the presumed effective population size and time since separation, fluctuating from around 0.824 to 1 (Table 4). Nevertheless, putatively adaptive SNP loci dataset provided comparatively higher power than the all the SNP loci dataset, varying from 0.985 to 1 (Table 4). However, both the SNP loci datasets provided more than adequate power to detect genetic difference among the five broodstock populations of *P. monodon*.

**Table 4.** Results of the power analysis conducted on all 194,259 SNP loci and 4983 putatively adaptive SNP loci.

All 194,259 SNP Loci			4983 Putatively Adaptive SNP Loci		
<i>t</i>	<i>Ne</i>	Power	<i>t</i>	<i>Ne</i>	Power
10	1000	0.945	10	1000	1.000
20	1000	1.000	20	1000	1.000
10	2000	0.884	10	2000	1.000
20	2000	0.912	20	2000	0.994
10	3000	0.824	10	3000	0.996
20	3000	0.902	20	3000	0.985

### 3.3. Demographic Interpretations from $F_{ST}$ Statistics and AMOVA Analysis

The pairwise  $F_{ST}$  value of five broodstock populations of *P. monodon* for the all SNP loci dataset were markedly lower than the pairwise  $F_{ST}$  estimates for the putatively adaptive SNP loci dataset (Table 5). For all the 194,259 SNP loci, pairwise  $F_{ST}$  estimates ranged from 0.003 to 0.153, with an overall average value of 0.089 (Table 5). For the 4983 putatively adaptive SNP loci, the pairwise  $F_{ST}$  value displayed higher values, ranging from 0.003 to 0.870, with an overall average value of 0.789. Low genetic differentiation, as observed by low pairwise  $F_{ST}$  value, was reported between the two wild-caught (MJ vs. MS) broodstock populations of *P. monodon* for all SNP loci ( $F_{ST} = 0.008$ ;  $p = 0.001$ ) and putatively adaptive SNP loci ( $F_{ST} = 0.106$ ;  $p = 0.000$ ) datasets. Similar pattern of genetic differentiation was also observed between the three domesticated (MMD vs. MMO; MT vs. MMO; MT vs. MMD) broodstock populations of *P. monodon*, with pairwise  $F_{ST}$  values ranging from 0.003 (MMD vs. MMO) to 0.010 (MMO vs. MT) in all the SNP loci dataset, and 0.003 (MMD vs. MMO) to 0.042 (MMD vs. MT) in the putatively adaptive SNP loci dataset. In contrast, a high genetic divergence was observed between domesticated and wild populations, with pairwise  $F_{ST}$  values ranging from 0.145 (MMD vs. MS) to 0.153 (MJ vs. MT) in all the SNP loci dataset, and 0.836 (MJ vs. MMO) to 0.870 (MMD vs. MS) in the putatively adaptive SNP loci dataset. All of the pairwise  $F_{ST}$  comparison were significant ( $p \leq 0.001$ ), except for those between MMD and MMO for putatively adaptive SNP loci ( $p = 0.105$ ) (Table 5).

When all SNPs were used, genetic variation inferred by a hierarchical AMOVA reveals the largest component of genetic variability (74.1%) within the individual level (Table 6). The portion of genetic divergence captured by AMOVA among the individuals was 16.1% ( $p = 0.000$ ). A substantially low (9.8%) but significant divergence ( $p = 0.000$ ) was observed among five broodstock populations of *P. monodon* (Table 6). Overall genetic structure yielded by AMOVA using all SNP loci resulted in a significant  $F_{ST}$  value of 0.098 ( $p = 0.000$ ). Interestingly, hierarchical AMOVA based on the putatively adaptive loci revealed a high genetic divergence among five broodstock populations of *P. monodon* (80.8%;  $p = 0.000$ ), but no differentiation was observed among individuals (0.0%;  $p = 0.483$ ), while the remaining variation within individuals was 19.2% (Table 6). The hierarchical AMOVA for the putatively adaptive SNP loci also resulted in a significant  $F_{ST}$  value of 0.808 ( $P = 0.000$ ), indicating a high level of genetic divergence of *P. monodon* broodstock populations.



**Table 5.** Pairwise  $F_{ST}$  values (below diagonal) and associated  $p$  values (above diagonal) for the all SNPs loci and putatively adaptive SNP loci of giant tiger shrimp *Penaeus monodon* wild and domesticated broodstock populations collected from different Indo-Pacific regions.

	Wild		Domesticated		
	MJ	MS	MMO	MMD	MT
All SNP loci					
MJ	--	0.001	0.001	0.001	0.001
MS	0.008	--	0.001	0.001	0.001
MMO	0.151	0.147	--	0.023	0.001
MMD	0.150	0.145	0.003	--	0.001
MT	0.153	0.148	0.010	0.008	--
Putatively adaptive SNP loci					
MJ	--	0.000	0.000	0.000	0.000
MS	0.106	--	0.000	0.000	0.000
MMO	0.836	0.856	--	0.105	0.002
MMD	0.853	0.870	0.003	--	0.000
MT	0.850	0.868	0.035	0.042	--

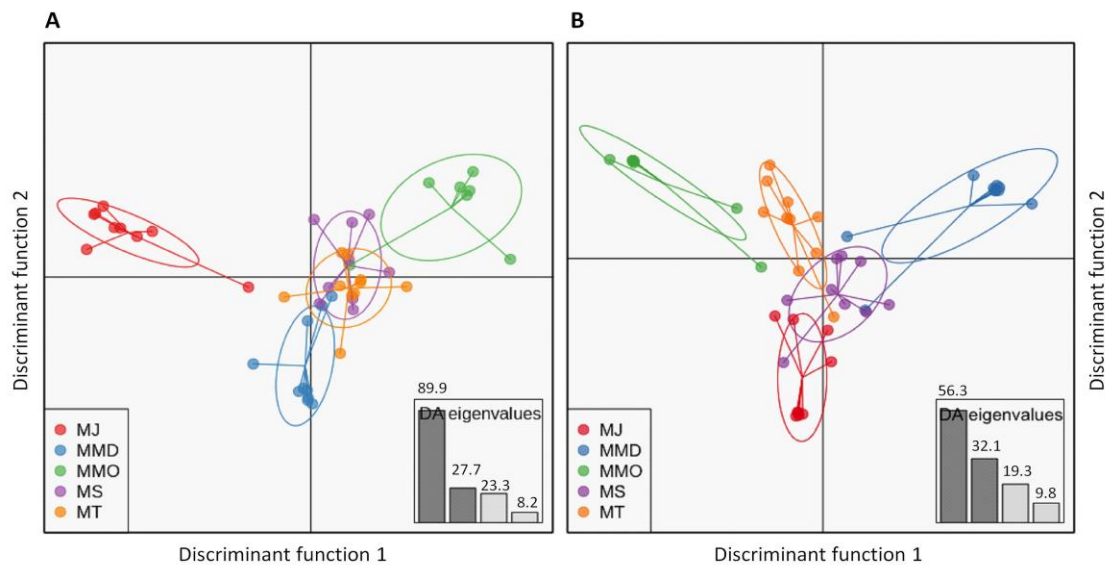
**Table 6.** Molecular analysis of variance for the all SNP loci and putatively adaptive SNP loci of five giant tiger shrimp *Penaeus monodon* broodstock populations collected from different Indo-Pacific regions.

Source of Variation	Sum of Square	Variance Components	% of Variation	Statistics	$p$ -Value
All SNP loci					
Within individuals	1,056,256	25,309.931	74.1	$F_{it} = 0.259$	-
Among individuals	1,286,226.1	5502.952	16.1	$F_{is} = 0.179$	0.000
Among populations	355,088.8	3342.094	9.8	$F_{st} = 0.098$	0.000
Putatively adaptive SNP loci					
Within individuals	10,205.5	238.184	19.2	$F_{it} = 0.808$	-
Among individuals	8192.9	-0.083	0.0	$F_{is} = 0.000$	0.483
Among populations	63029.16	1004.217	80.8	$F_{st} = 0.808$	0.000

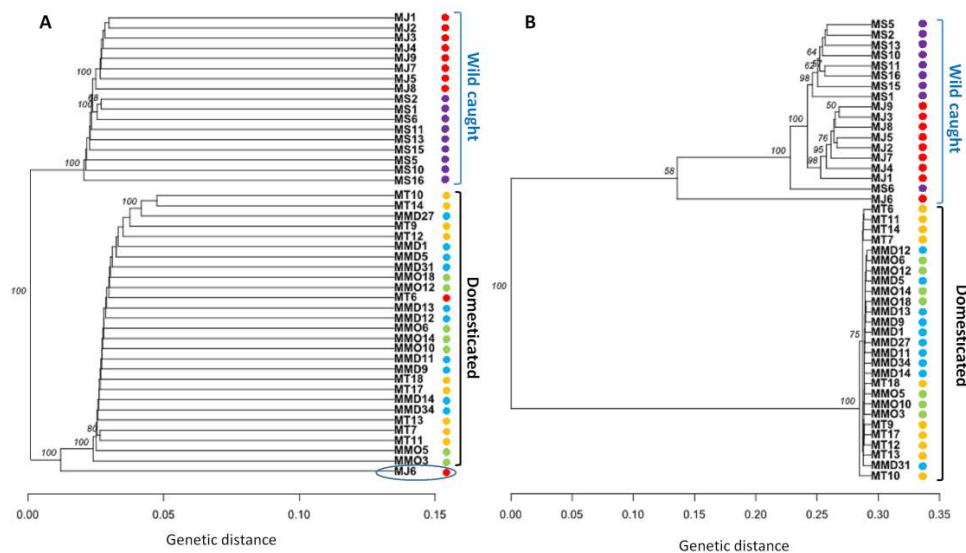
### 3.4. Genetic Structure Based on Clustering Analyses

Inferring from several spatial clustering analyses of all SNP loci and putatively adaptive SNP loci datasets, substantial differences in genetic structure patterns of five broodstock populations of *P. monodon* were observed. A discriminant analysis of principal components (DAPC) of all SNP loci datasets revealed that MT and MS populations were pronouncedly overlapped among each other, while others three populations were more or less discriminated from each other's (Figure 3A). For putatively adaptive SNP loci dataset, DAPC analysis revealed that wild-caught broodstock populations (MS and MJ) were closely associated with each other's (Figure 3B). The clustering patterns of all and putatively adaptive SNP loci datasets were also analyzed by neighbor-joining (NJ) trees based on Nei's genetic distances, both of which revealed a divergent genetic structure of five broodstock populations of *P. monodon* into two clusters: (1) wild-caught populations (MS and MJ), and (2) domesticated populations (MMD, MMO and MT). However, NJ tree topology for all SNP loci dataset showed lower Nei's genetic distance compared to the putatively adaptive SNP loci dataset, and only one wild-caught individual from Japan (MJ6) incongruently clustered with domesticated broodstock populations of *P. monodon* (Figure 4). Like NJ trees, STRUCTURE program also detects distinct genetic clusters (K) within a set of populations using a Bayesian clustering model. The number of clusters that best explain the genetic variation in the dataset is determined by estimating the cross-validation error. Similar to NJ trees, admixture analysis using Bayesian STRUCTURE of both all SNP loci and putatively adaptive SNP loci datasets also revealed two distinct genetic clusters ( $K = 2$ ) within five broodstock populations of *P. monodon* (Figure 5). One spatial clustering was observed

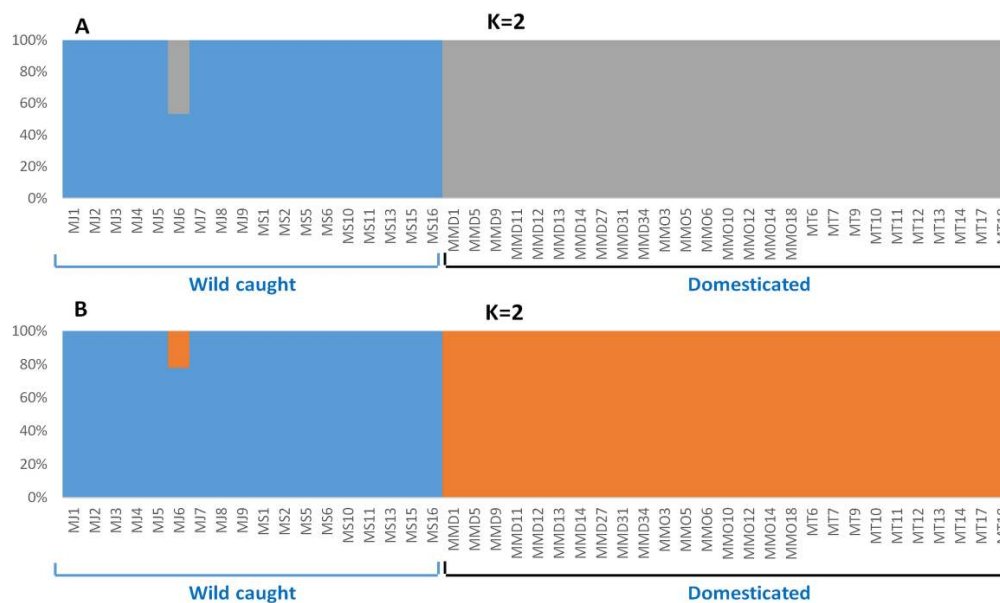
for wild-caught populations collected from MS and MJ regions, while another spatial clustering was observed for the domesticated populations collected from the MMD, MMO and MT regions (Figure 5).



**Figure 3.** Plots showing the discriminant analysis of principal components (DAPCs) of genetic differentiation for the all (A) and the putatively adaptive (B) SNP loci of five broodstock populations of *Penaeus monodon*. Ovals are the inertial ellipse, dot represent individual genotypes and the line extends to centroids of each population Here, MJ indicate samples from Shizuoka, Japan (wild); MMD indicates samples from Mahajamba, Madagascar (Domesticated); MMO indicates samples from Hawaii, HI, USA (Domesticated); MS indicate samples from Setiu Wetland, Malaysia (wild); MT indicates samples from Petchaburi, Thailand (Domesticated).



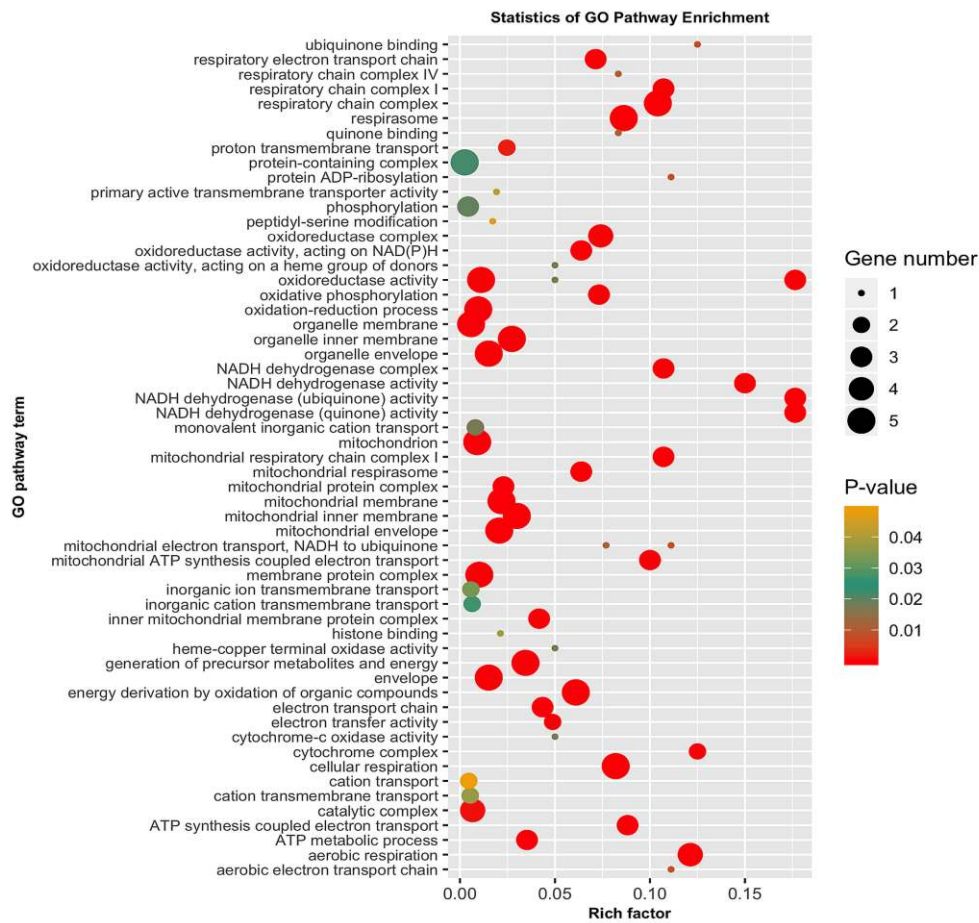
**Figure 4.** Neighbor-joining trees based on the Nei's genetic distances for all SNP loci dataset (A) and the putatively adaptive panel of SNP loci dataset (B) of five broodstock populations of *Penaeus monodon* in the Indo-Pacific region. Branch nodes are denoted as the percentage of bootstrap support that was generated with 1000 replicates. Here, MJ indicate samples from Shizuoka, Japan (wild); MS indicate samples from Setiu Wetland, Malaysia (wild); MMD indicates samples collected from Mahajamba, Madagascar (Domesticated); MMO indicates samples from Hawaii, HI, USA (Domesticated); MT indicates samples from Petchaburi Province, Thailand (Domesticated). The numeric number next to the sample name abbreviation indicates the respective individual tag number during collection.



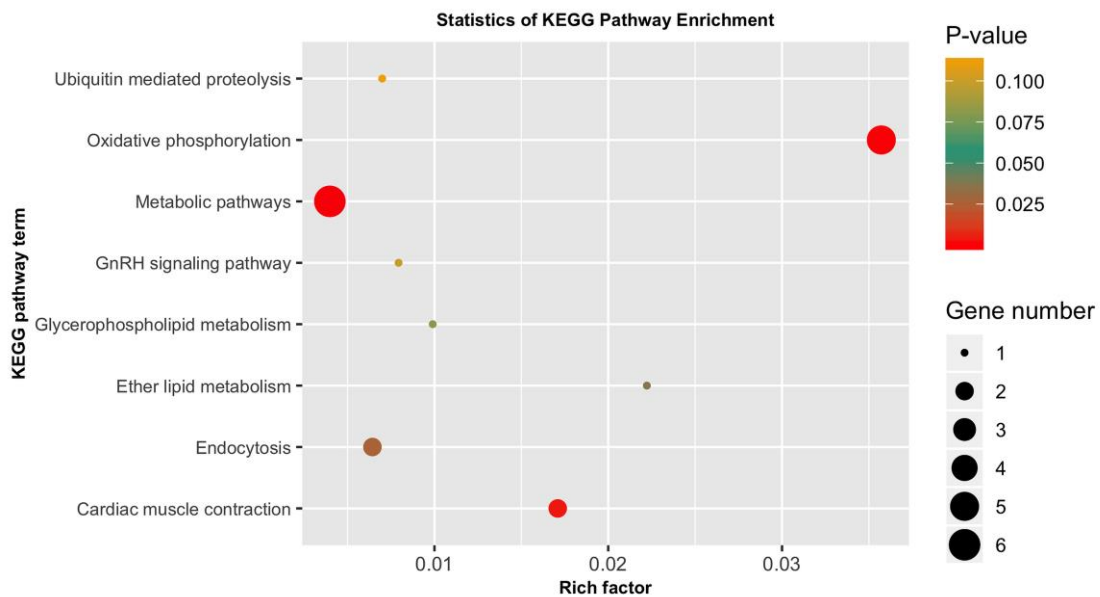
**Figure 5.** Bayesian STRUCTURE bar plot for all SNP loci dataset (A) and the putatively adaptive panel of SNP loci dataset identified by pcadapt approaches (B) of five broodstock populations of *Penaeus monodon* in the Indo-Pacific region. Each color represents the proportion of inferred ancestry from K ancestral populations and each bar represents an individual sample. Based on the delta K statistic, the best supported number of a posteriori genetic clusters was  $K = 2$  for the standard admixture model. Here, MJ indicate samples from Shizuoka, Japan (wild); MS indicate samples from Setiu Wetland, Malaysia (wild); MMD indicates samples from Mahajamba, Madagascar (Domesticated); MMO indicates samples from Hawaii, HI, USA (Domesticated); MT indicates samples from Petchaburi Province, Thailand (Domesticated). The numeric number next to the sample name abbreviation indicates the respective individual tag number during collection.

### 3.5. GO Categorization of the Encoding Genes of Putatively Adaptive SNP Loci

The 4983 putatively adaptive SNP loci sequences identified as outliers with the pcadapt approach were blasted against the genome of the Pacific white shrimp (*L. vannamei*), and 50 of them yielded significant matches with CDS amino acid sequences (Table S3). Among the 50 CDS amino acid sequences, 5 (COX3, ND4, ND6, CYTB, ND1) originated from mitochondrion, 16 were from known characterized protein, while the remaining 29 were uncharacterized protein Table S3. The 50 CDS were then subjected to GO and KEGG pathway enrichment analysis to discern the functional characterization of the genes encoded within the identified adaptive SNP loci. The GO results showed that most of the enriched pathways were linked to physiological functions, such as respiration, metabolism and energy derivation through mitochondrial oxidative phosphorylation and other organic compounds (Figure 6, Table S4). Many of these genes were involved in respiratory electron transport chain, respiratory chain complex, cellular respiration, aerobic respiration, respirasome, oxydoreductase activity, oxydative phosphorylation, organelle envelop, mitochondrion, mitochondrial envelope, membrane protein complex, generation of precursor metabolites and energy, energy derivation by oxidation of organic compounds, catalytic complex and the ATP metabolic process. KEGG pathway enrichment further demonstrated the involvement of the encoded genes in pathways related to metabolism, oxidative phosphorylation, cardiac muscle contraction and endocytosis, which is in coordination with the results of GO enrichment (Figure 7, Table S5). In addition, this study reveals an array of uncharacterized proteins with unknown functions. One uncharacterized protein LOC113820286 also appeared to be involved in respiration, the mitochondrial protein complex, the generation of precursor metabolites and energy and electron transport and ATP synthesis, like known mt proteins ND4, ND1, CYTB and COX3 (Table S4).



**Figure 6.** Gene ontology (GO) pathway enrichment analysis for the 50 genes encoded by the putatively adaptive SNP loci in *P. monodon* population.



**Figure 7.** Kyoto Encyclopedia of Genes and Genomes (KEGG) pathways enrichment analysis for the 50 genes encoded by the putatively adaptive SNP loci in *P. monodon* population.

#### 4. Discussion

Revealing the population structure patterns of *P. monodon* broodstocks is important for the systematic monitoring and management of both natural and wild populations. This study applied SkimSeq-based data to explore the variation of *P. monodon* broodstocks collected from natural habitats and shrimp farms in the Indo-Pacific regions. Loci with a high resolving power and potentially under selective process were detected. We observed a remarkable divergence between the domesticated and wild broodstocks. Although similar genetic discriminations were observed, putatively adaptive SNP loci most powerfully detected the genetic discrimination, as revealed by demographic interpretations and inferred clustering analyses. Compared to conventional molecular markers used for population genetic studies, our SkimSeq approach uses unbiased whole genome sequences to accurately identify the traces of selection that cause genetic differentiation using a lower coverage area with combination of small population size [77,78]. We noted that the impact of random genetic drift is larger in smaller sample size [79]. However, empirical studies have denoted that high throughput DNA sequencing have compensated smaller sample size with large number of generated SNP loci, to ensure high accuracy in estimating population genetic parameters [80–82]. Sample size as low as four individuals have been documented to be efficient in providing a precise estimate of  $F_{ST}$  values [83,84]. Indeed, a universal sample size rule may not be feasible to address the complexities in genomic kinship estimates [85]. As such, with the supporting power analysis output, the number of samples used in the present study is optimal in generating datasets of high precision.

AMOVA of putatively adaptive SNP loci showed a high total variance of 80.8% attributed to differences between the wild and domesticated groups. The low pairwise  $F_{ST}$  between wild populations of MS and MJ indicate that the two broodstock populations have genetic affinity, which could be the result of reciprocal transport, despite showing no significant geographic proximity, and this genetic pattern can be seen in other species, such as giant freshwater prawn (*Macrobrachium rosenbergii*) [86,87]. The NJ tree (Figure 4) and Bayesian STRUCTURE analysis (Figure 5) suggest limited genetic differentiation between all cultured populations (MMO, MMD and MT), implying that they might be derived from similar sources prior to domestication. Significant genetic similarity between the cultured populations may have stemmed from similar founder populations and selection procedures, which are normally practiced in shrimp industry.

Wild populations (MS, MJ) co-locate on another branch in NJ tree, indicating they have a separate origin from the cultured populations [86]. Besides, pairwise  $F_{ST}$  estimates, AMOVA, DAPC plot and STRUCTURE analysis agree with the genetic homogeneity of domesticated populations and their significant differentiation from the wild progenitor populations [88,89], particularly more significant for the putatively adaptive dataset. Significant genetic differentiation between domesticated stocks and wild populations has not been commonly observed in studies of the same species [37], but in other species such as salmon (*Salmo salar*) [90], grass carp (*Ctenopharyngodon idella*) [91,92] and Asian seabass (*Lates calcarifer*) [93].

In the present study, only one individual from MJ population was genetically identical to the cultured populations. Wild broodstocks, obtained as founders for shrimp domestication program, have been subjected to mass selection process over many generations, which may render lower genetic affinity between the cultured and wild populations. We also hypothesize that the founder broodstocks for the domestication program may have originated from more than one shrimp breeding company, and wild populations of different geographical localities. A lack of significant differentiation among domesticated populations may suggest the probability of a relatively short domestication history or genetically closely related populations [94].

Lack of gene flow between domesticated and wild populations is not unexpected when the confined environment of shrimp hatcheries and farms were taken into consideration. Moreover, our experimental design have defiled the potential occurrence of escapees from farms to the natural environment, given that all individuals were only obtained from populations, which were isolated completely from each other with a minimum of 500 km apart (MT and MS). The genetic structuring pattern being impacted by

farm escapees was not uncommon, and has been reported in *P. monodon* [33,95]. However, more shrimp samples of wild and cultured stocks from different regions need to be analyzed to validate this genetic distinction. In fact, previous studies have suggested that fragmentation was commonly observed within the penaeid shrimp populations that were geographically separated by smaller distance [96].

The genetic homogeneity between the domesticated populations may be due to the artificial selection of favorable traits or adaptation to similar aquaculture practices. Aquaculture practices have been observed to reduce genetic variability in farmed reared stocks of other aquatic species [97–99]. Despite being geographically isolated, the genetic similarity among the wild populations, could possibly be linked to adaptive fitness to similar environmental conditions [100,101]. Convergent evolution has been documented in abalone (*Haliotis midae*) [102] and scallops (Pectinidae) [103], inhabiting analogous ecological niches, which subsequently develop consonant phenotypic traits. In addition, early population genetic studies on penaeid shrimp based on various techniques, including allozyme, RAPD and mtDNA analyses, showed that small genetic differences in these species were attributed to the dispersal ability, life history of shrimp and lack of physical barriers in the marine environment [32,95,104,105].

The effect of random genetic drift is more accentuated in smaller sample size [106]. Unequal sex ratio or differential reproductive contributions of the broodstocks in most breeding programs may cause random genetic drift [94,107]. In the present study, the low genetic differences between domesticated populations might be partially caused by random genetic drift or regionally different selective regimes [108]. Although this factor is a determinant key in dramatic depression of genetic variability in domesticated populations, it is beyond the scope of this study.

Unique genes also persists in differentiating the domesticated and wild populations, which can be explained by selection of differentially favored alleles, holding particular reference to genetic improvement program in captive breeding environment [89]. The evidence of differential selection between the two groups (Figures 4 and 5) highlighting the role of selection as a major evolutionary force in driving genetic divergence, specifically in domesticated populations. Selective pressures may be in part responsible for facilitating population variation; considering that these domesticated stocks have been undergoing grading procedures where undesired specimens were culled in the entire production system [89]. On the other hand, population heterogeneity connected to adaptation to environmental factors or ecological niches is well revealed in wild populations [102,109,110]. The development of ecotypes is well documented for many aquatic species in various environments where environmental clines persist [111–113].

The putatively adaptive SNP loci identified by the pcadapt approach also identifies genomic regions associated with the strong artificial selection during the domestication process over temporal scales. Of the 4983 putatively adaptive SNPs, only 50 genes were encoded successfully annotated through BLAST analysis. We have an array of uncharacterized proteins, with their functions are not known. Moreover, it was also observed that five mitochondrial genes (COX3, ND4, ND6, CYTB, ND1) were mutated among different populations of *P. monodon*. mtDNA has been widely used in population genetic studies to reconstruct phylogenetic relationships and analyze population structure [114], due to its unique characteristics such as maternal inheritance, neutrality, higher mutational rate than nuclear DNA and little to no recombination [115–117]. However, the prominent functions of a set of proteins encoded by mitochondrial genome in cellular energy production question its utility as a neutral marker [118]. In fact, our results from the KEGG pathway enrichment analysis has also suggested the presence of mutations under positive selection for the peptides, in which their functional properties are highly related in metabolic efficiency. Mitochondria produce 95% of cellular energy through oxidative phosphorylation of ADP (adenosine diphosphate) to form ATP (adenosine triphosphate). There is evidence that shows that several proteins containing mitochondrial encoded amino acids are involved not only in ion translocation, but also in mitochondrial respiration regulation [119,120]. Variation in mtDNA maybe taxon specific [121], and is linked to a range of environmental conditions affecting metabolic processes [122], development rates [123], biological

ageing [124] and fitness. Mutations in the mitochondrial genome may affect the ability of mitochondria in ATP production [125], and putative maternal effects of mitochondrial genome on fish growth rate has been observed in other species, such as the Atlantic salmon [126]. Natural selection has also favored co-adaptative functions between mtDNA and nuclear DNA in maintaining optimal metabolic function and, thus, shaping the evolution of a species populations [127,128]. Despite being extensively utilized in manifold population structure studies, our findings have discovered the core functional properties of mitochondrial genome, particularly those involved in metabolic and energy productions as the driving force of population divergence. These fine attributes of mitochondrial functional properties warrant further new exploration and continual usage as one of the parameters in population genomics studies of various organisms. It has also been noticed that several genes are likely linked to other biological functions like molting (cuticle protein 21-like) [129], developmental process (neurotrophin 1-like) [130] and immunity (baculoviral IAP repeat-containing protein, serine protease 42-like) [131,132]. However, the present findings demonstrated that the nonsynonymous mutations in these encoded genes might be associated with different biological functions, which may enable *P. monodon* broodstocks to adapt to strong artificial selection during domestication process.

## 5. Conclusions

We observed a pronounced genetic divergence between the wild and domesticated broodstock populations of *P. monodon* across the Indo-Pacific region. We suggested that similar founder populations, artificial selection regimes of desired commercial traits and local adaptive process to similar aquaculture practices have dramatically reduced the genetic heterogeneity of the domesticated stocks. Despite being geographically isolated, we denote that the patterns of genetic homogeneity in wild populations maybe strongly influenced by hydrographic conditions and ecological niches which are expected to increase the adaptive processes of the populations towards their natural habitats. Genetic differences between wild and domesticated populations presented in this study can be likely explained by a number of unique genes within the putatively adaptive SNP loci. These genes were found to be significantly associated with the mitochondrial genome. Our results from KEGG pathway analysis further reinforce the potential selective force which have diverged both groups. We noted the presence of polymorphism in the mitochondrial regions, notably those that are related to the energy production, metabolic functions, respiration regulation and developmental rates. The combination of these functional properties of peptide encoded by mitogenome are linked to various environmental parameters, and this likely acting to promote the genetic isolation of domesticated populations from their wild. Separated by geographical distance and various selection breeding programs, these two groups may each develop local adaptation to ecological niches, biological traits and demographic histories found within their thriving habitats. Taken together, this study has demonstrated the applicability of SkimSeq in a highly duplicated genome of penaeid shrimp, *P. monodon* specifically, across a range of genetic backgrounds and geographical distributions. This ultra-low sequencing coverage has enabled the sequencing of low number of individuals to achieve either similar or perhaps more powerful coverage, but with lower cost than other traditional GBS methods. In future work, larger sample sizes from a larger number of populations collected from wider distribution range should be included within a similar comparative framework, to validate if this specific trend represents a general rule associated with the genetic divergence of *P. monodon* broodstocks.

**Supplementary Materials:** The following are available online at <http://www.mdpi.com/2079-7737/9/9/277/s1>, Table S1: Number of read pairs before and after quality control of each individuals of *Penaeus monodon* collected from different Indo-Pacific region, Table S2: Reads alignment rate of each individual of *Penaeus monodon* collected from different Indo-Pacific region, Table S3: Summary of the gene annotation of the putatively adaptive panel of the SNP loci of broodstock populations of *Penaeus monodon* based on the reference genomes of Pacific white shrimp *Litopenaeus vannamei*, Table S4: Result of GO enrichment analysis showing significant GO pathway terms ( $p < 0.05$ ) of the 50 genes encoded by the putatively adaptive panel of the SNP loci of *P. monodon* population, Table S5: Kyoto Encyclopedia of Genes and Genomes (KEGG) pathway terms and statistics of KEGG pathway enrichment analysis of the 50 genes encoded by the putatively adaptive panel of the SNP loci of *P. monodon* population.

**Author Contributions:** Conceptualization and design of the research, L.L.W. and M.A.; Field work and data collection, S.I., and K.O.; Methodology, Z.M.D., L.L.W., Q.A., and S.Y.L.; Bioinformatics and spatial analysis, Y.I., S.A. and M.A.; Molecular data curation, M.A., S.H. and Mariom; Writing—original draft preparation, M.A., L.L.W., Mariom and Z.M.D.; Writing—review and editing, L.L.W., M.A., K.O., Q.A., S.A. and M.I.; Project administration, L.L.W.; Funding acquisition, L.L.W. All authors have read and agreed to the published version of the manuscript.

**Funding:** This study was funded by the Illumina, Inc. and ScienceVision Sdn. Bhd under the Agrigenomic SkimSeq Grant and Ministry of Higher Education, Malaysia under the Niche Research Grant Scheme (NRGS) (NRGS/2014/53131/6).

**Acknowledgments:** We would like to express our deepest gratitude to BioEasy Sdn. Bhd. for the sequencing, notably to Tay Yea-Ling, Teow Kok Sin, Khor Bee Yin and Lim Lik-Sin. We would also like to thank Wilhelm Eng from Monash University Malaysia Genomics Facility for his technical and administrative assistance. Special thanks to Alunan Asli Sdn Bhd for providing domesticated broodstocks (MMO, MMD, MT).

**Conflicts of Interest:** The authors declare no conflict of interest.

## References

1. FAO (Food and Agriculture Organization of the United Nations). *The State of World Fisheries and Aquaculture 2020; Sustainability in Action*; FAO: Rome, Italy, 2020.
2. FAO (Food and Agriculture Organization of the United Nations). *GLOBEFISH—Information and Analysis on World Fish Trade*; FAO: Italy, Rome, 2019.
3. Venkateswarlu, V.; Venkatrayulu, C. Prevalence of disease problems affecting shrimp *Litopenaeus vannamei* farming in Andhra Pradesh, India. *Int. J. Fish. Aquat. Stud.* **2019**, *7*, 275–279.
4. Wyban, J.; Martinez, G.; Sweeney, J.N. Adding paprika to *Penaeus vannamei* maturation diet improves nauplii quality. *World Aquac.* **1997**, *28*, 59–62.
5. Klinbunga, S.; Siludjai, D.; Wuthijinda, W.; Tassanakajon, A.; Jarayabhand, P.; Menasveta, P. Genetic heterogeneity of the giant tiger shrimp (*Penaeus monodon*) in Thailand revealed by RAPD and mtDNA-RFLP analyses. *Mar. Biotechnol.* **2001**, *3*, 428–438. [[CrossRef](#)] [[PubMed](#)]
6. Nahavandi, R.; Hafezamini, P.; Shamsudin, M.N. Genetic diversity of intensive cultured and wild tiger shrimp *Penaeus monodon* (Fabricius) in Malaysia using microsatellite markers. *Afr. J. Biotechnol.* **2011**, *10*, 15501–15508. [[CrossRef](#)]
7. FAO (Food and Agriculture Organization of the United Nations). *Improving Penaeus Monodon Hatchery Practices*; FAO Fisheries Technical Paper 446; FAO: Rome, Italy, 2007.
8. Andam, C.P.; Challagundla, L.; Azarian, T.; Hanage, W.P.; Robinson, D.A. 3—Population Structure 2017, Pages 51–70 of Pathogenic Bacteria. In *Genetics and Evolution of Infectious Diseases*, 2nd ed.; Elsevier: Amsterdam, The Netherlands, 2017; pp. 51–70.
9. Fowler, S.; Roush, R.; Wise, J. Concept of Biology. *OpenStax, Pressbook*. 2019. Available online: <https://openstax.org/details/books/concepts-biology> (accessed on 28 June 2020).
10. De León, F.J.G.; Galván-Tirado, C.; Velasco, L.S.; Segundo, C.A.S.; Guzmán, H.R.; Barriga-Sosa, I.A.; Jaimes, P.D.; Canino, M.; Cruz-Hernandez, P. Role of oceanography in shaping the genetic structure in the North Pacific hake *Merluccius productus*. *PLoS ONE* **2018**, *13*, e0194646.
11. Perina, A.; Mari-Mena, N.; Torrecilla, Z.; González-Tizón, A.M.; González-Castellano, I.; González-Ortegón, E.; Martínez-Lage, A. Assessment of genetic diversity and population structure of the common littoral shrimp *Palaemon serratus* (Pennant, 1777) by microsatellites: Towards a sustainable management. *Aquatic Conservation. Mar. Freshw. Ecosyst.* **2018**, *29*, 528–536. [[CrossRef](#)]
12. Yu, L.; Zhu, X.; Liang, J.; Fan, J.; Chen, C. Analysis of genetic structure of wild and cultured Giant Freshwater Prawn (*Macrobrachium rosenbergii*) using newly developed microsatellite. *Front. Mar. Sci.* **2019**, *6*, 323. [[CrossRef](#)]
13. Shen, Y.; Wang, L.; Fu, J.; Xu, X.; Yue, G.H.; Li, J. Population structure, demographic history and local adaptation of the grass carp. *BMC Genom.* **2019**, *20*, 467. [[CrossRef](#)]
14. Dixon, T.J.; Coman, G.J.; Arnold, S.J.; Sellars, M.J.; Lyons, R.E.; Dierens, L.E.; Preston, N.G.; Li, Y. Shifts in genetic diversity during domestication of Black Tiger shrimp, *Penaeus monodon*, monitored using two multiplexed microsatellite systems. *Aquaculture* **2008**, *283*, 1–6. [[CrossRef](#)]



15. Souza de Lima, A.P.; Lira dos, S.A.C.; Dantas, H.L.; Gomes, F.M.; Maggioni, R.; Moura, C.M.R. Genetic monitoring of broodstocks of the marine shrimp *Litopenaeus vannamei* in a closed rearing system in Pernambuco, Brazil. *Aquac. Res.* **2008**, *39*, 1461–1466. [[CrossRef](#)]
16. Benzie, J.A.H. Use and exchange of genetic resources of penaeid shrimps for food and aquaculture. *Rev. Aquac.* **2009**, *1*, 232–250. [[CrossRef](#)]
17. Perez-Enriquez, R.; Hernández-Martínez, F.; Cruz, P. Genetic diversity status of White shrimp *Penaeus (Litopenaeus) vannamei* broodstock in Mexico. *Aquaculture* **2009**, *297*, 44–50. [[CrossRef](#)]
18. Zhang, T.; Kong, J.; Wang, W.; Wang, Q. Genetic variability assessed by microsatellites in the breeding populations of the shrimp *Penaeus (Fenneropenaeus) chinensis* in China. *Aquaculture* **2010**, *310*, 229–233. [[CrossRef](#)]
19. Li, Z.-M.; Xie, L.; Ye, F.; Chen, G. SSR analysis of three species from primary parent and their first generation of *Litopenaeus vannamei*. *Agric. Biotechnol.* **2010**, *11*, 57–61.
20. De Donato, M.; Manrique, R.; Ramirez, R.; Mayer, L.; Howell, C. Mass selection and inbreeding effects on a cultivated strain of *Penaeus (Litopenaeus) vannamei* in Venezuela. *Aquaculture* **2005**, *247*, 159–167. [[CrossRef](#)]
21. Khedkar, G.D.; Reddy, A.C.; Ron, T.B.; Haymer, D. High levels of genetic diversity in *Penaeus monodon* populations from the east coast of India. *Springer Plus* **2013**, *2*, 671. [[CrossRef](#)]
22. Ríos-Pérez, L.D.L.; Campos-Montes, G.R.; Martínez-Ortegad, A.; Castillo-Juárez, H.; Montaldo, H.H. Inbreeding effects on reproductive traits in a breeding population of Pacific white shrimp *Penaeus (Litopenaeus) vannamei*. *Aquaculture* **2017**, *479*, 442–446. [[CrossRef](#)]
23. Lynch, M.; Walsh, B. *Genetics and Analysis of Quantitative Traits*; Sinauer Associates: Sunderland, MA, USA, 1998.
24. Hedrick, P.W.; Kalinowski, S.T. Inbreeding depression in conservation biology. *Annu. Rev. Ecol. Syst.* **2000**, *31*, 139–162. [[CrossRef](#)]
25. Ponzoni, R.W.; Khaw, H.L.; Nguyen, N.H.; Hamzah, A. Inbreeding and effective population size in the Malaysian nucleus of the GIFT strain of Nile tilapia (*Oreochromis niloticus*). *Aquaculture* **2010**, *302*, 42–48. [[CrossRef](#)]
26. Francisco, A.K.; Galetti, P.M., Jr. Genetic distance between broodstock of the marine shrimp *Litopenaeus vannamei* (Decapoda, Penaeidae) by mtDNA analyses. *Genet. Mol. Biol.* **2005**, *28*, 258–261. [[CrossRef](#)]
27. Rezaee, S.; Farahmand, H.; Nematollahi, M.A. Genetic diversity status of Pacific white shrimp (*Litopenaeus vannamei*) using SSR markers in Iran. *Aquac. Int.* **2015**, *247*, 159–167. [[CrossRef](#)]
28. Gaiotto, F.A.; Bramucci, M.; Grattapaglia, D. Estimation of outcrossing rate in a breeding population of *Eucalyptus urophylla* with dominant RAPD and AFLP markers. *Theor. Appl. Genet.* **1997**, *95*, 842–849. [[CrossRef](#)]
29. Benzie, J.A.H.; Ballment, E.; Forbes, A.T.; Demetriades, N.T.; Sugama, K.; Haryanti; Moria, S. Mitochondrial DNA variation in Indo-Pacific populations of the Giant Tiger prawn, *Penaeus monodon*. *Mol. Ecol.* **2002**, *11*, 2553–2569. [[CrossRef](#)] [[PubMed](#)]
30. Waqairatu, S.S.; Dierens, L.; Cowley, J.A.; Dixon, T.J.; Johnson, K.N.; Barnes, A.C.; Li, Y. Genetic analysis of Black Tiger shrimp (*Penaeus monodon*) across its natural distribution range reveals more recent colonization of Fiji and other South Pacific Islands. *Ecol. Evol.* **2012**, *2*, 2057–2071. [[CrossRef](#)]
31. Sugama, K.; Haryanti Benzie, J.A.H.; Ballment, E. Genetic variation and population structure of the giant tiger prawn, *Penaeus monodon*, in Indonesia. *Aquaculture* **2002**, *205*, 37–48. [[CrossRef](#)]
32. Brooker, A.L.; Benzie, J.A.H.; Blair, D.; Versini, J.J. Population structure of the giant tiger prawn *Penaeus monodon* in Australian waters, determined using microsatellite markers. *Mar. Biol.* **2000**, *136*, 149–157. [[CrossRef](#)]
33. Xu, Z.K.; Primavera, J.H.; de la Pena, L.D.; Belak, J.; Alcarvar-Warren, A. Genetic diversity of wild and cultured Black tiger Shrimp (*Penaeus monodon*) in the Philippines using microsatellites. *Aquaculture* **2001**, *199*, 13–40. [[CrossRef](#)]
34. You, E.M.; Chiu, T.S.; Liu, K.F.; Tassanakajon, A.; Klinbunga, S.; Triwitayakorn, K.; de la Peña, L.D.; Li, Y.; Yu, H.T. Microsatellite and mitochondrial haplotype diversity reveals population differentiation in the tiger shrimp (*Penaeus monodon*) in the Indo-Pacific region. *Anim. Genet.* **2008**, *39*, 267–277. [[CrossRef](#)]
35. Walther, E.; Schöfl, G.; Mrotzek, G.; Sugama, K.; Saluz, H.P. Paralogous mitochondrial control region in the giant tiger shrimp, *Penaeus monodon* (F.) affects population genetics inference: A cautionary tale. *Mol. Phylogenetics Evol.* **2011**, *58*, 404–408. [[CrossRef](#)]

36. Abdul-Aziz, M.A.; Schöfl, G.; Mrotzek, G.; Haryanti, H.; Sugama, K.; Saluz, H.P. Population structure of the Indonesian giant tiger shrimp *Penaeus monodon*: A window into evolutionary similarities between paralogous mitochondrial DNA sequences and their genomes. *Ecol. Evol.* **2015**, *5*, 3570–3584. [[CrossRef](#)]
37. Duda, T.F.; Palumbi, S.R. Population structure of the black tiger prawn, *Penaeus monodon*, among western Indian Ocean and western Pacific populations. *Mar. Biol.* **1999**, *134*, 705–710. [[CrossRef](#)]
38. Carreras, C.; Ordóñez, V.; Zane, L.; Kruschel, C.; Nasto, I.; Macpherson, E.; Pascual, M. Population genomics of an endemic Mediterranean fish: Differentiation by fine scale dispersal and adaptation. *Sci. Rep.* **2016**, *7*, 43417. [[CrossRef](#)] [[PubMed](#)]
39. Vendrami, D.L.; Telesca, L.; Weigand, H.; Weiss, M.; Fawcett, K.; Lehman, K.; Clark, M.S.; Leese, F.; McMinn, C.; Moore, H.; et al. RAD sequencing resolves fine-scale population structure in a benthic invertebrate: Implications for understanding phenotypic plasticity. *R. Soc. Open Sci.* **2017**, *4*, 160548. [[CrossRef](#)] [[PubMed](#)]
40. Murphy, M.O.; Jones, K.S.; Price, S.J.; Weisrock, D.W. A genomic assessment of population structure and gene flow in an aquatic salamander identifies the roles of spatial scale, barriers, and river architecture. *Freshw. Biol.* **2018**, *63*, 407–419. [[CrossRef](#)]
41. Asaduzzaman, M.; Wahab, M.A.; Rahman, M.J.; Nahiduzzaman, M.; Dickson, M.W.; Igarashi, Y.; Asakawa, S.; Wong, L.L. Fine-scale population structure and ecotypes of anadromous Hilsa shad (*Tenuulosa ilisha*) across complex aquatic ecosystems revealed by NextRAD genotyping. *Sci. Rep.* **2019**, *9*, 1–14. [[CrossRef](#)]
42. Zhang, B.D.; Xue, D.X.; Li, Y.L.; Liu, J.X. RAD genotyping reveals fine-scale population structure and provides evidence for adaptive divergence in a commercially important fish from the northwestern Pacific Ocean. *PeerJ* **2019**, *7*, e7242. [[CrossRef](#)]
43. Sherman, K.D.; Paris, J.R.; King, R.A.; Moore, K.A.; Dahlgren, C.P.; Knowles, L.C.; Stump, K.; Tyler, C.R.; Stevens, J.R. RAD-Seq Analysis and in situ Monitoring of Nassau Grouper Reveal Fine-Scale Population Structure and Origins of Aggregating Fish. *Front. Mar. Sci.* **2020**, *7*, 157. [[CrossRef](#)]
44. Gamboa, M.; Watanabe, K. Genome-wide signatures of local adaptation among seven stoneflies species along a nationwide latitudinal gradient in Japan. *BMC Genom.* **2019**, *20*, 84. [[CrossRef](#)]
45. Huang, X.; Feng, Q.; Qian, Q.; Zhao, Q.; Wang, L.; Wang, A.; Guan, J.; Fan, D.; Weng, Q.; Huang, T.; et al. High-throughput genotyping by whole-genome resequencing. *Genome Res.* **2009**, *19*, 1068–1076. [[CrossRef](#)]
46. Bayer, P.E.; Ruperao, P.; Mason, A.S.; Stiller, J.; Chan, C.K.K.; Hayashi, S.; Long, Y.; Meng, J.; Sutton, T.; Visendi, P.; et al. High-resolution skim genotyping by sequencing reveals the distribution of crossovers and gene conversions in *Cicer arietinum* and *Brassica napus*. *Theor. Appl. Genet.* **2015**, *128*, 1039–1045. [[CrossRef](#)]
47. Golicz, A.A.; Bayer, P.E.; Edwards, D. Skim-based genotyping by sequencing. *Methods Mol. Biol.* **2015**, *1245*, 257–270. [[PubMed](#)]
48. Scheben, A.; Batley, J.; Edwards, D. Genotyping-by-sequencing approaches to characterize crop genomes: Choosing the right tool for the right application. *Plant Biotechnol. J.* **2017**, *15*, 149–161. [[CrossRef](#)] [[PubMed](#)]
49. Scheben, A.; Batley, J.; Edwards, D. Revolution in Genotyping Platforms for Crop Improvement. In *Advances in Biochemical Engineering Biotechnology*; Springer: Berlin/Heidelberg, Germany, 2018.
50. Anderson, J.; Kantar, M.; Bock, D.; Grubbs, K.C.; Schilling, E.; Rieseberg, L. Skim-Sequencing Reveals the Likely Origin of the Enigmatic Endangered Sunflower *Helianthus schweinitzii*. *Genes* **2019**, *10*, 1040. [[CrossRef](#)] [[PubMed](#)]
51. Bayer, P.E. Skim-Based Genotyping by Sequencing Using a Double Haploid Population to Call SNPs, Infer Gene Conversions, and Improve Genome Assemblies. In *Plant Bioinformatics*; Humana Press: New York, NY, USA, 2016; pp. 285–292.
52. Bayer, P.E.; Hurgobin, B.; Golicz, A.A.; Chan, C.K.K.; Yuan, Y.; Lee, H.; Renton, M.; Meng, J.; Li, R.; Long, Y.; et al. Assembly and comparison of two closely related *Brassica napus* genomes. *Plant Biotechnol. J.* **2017**, *15*, 1602–1610. [[CrossRef](#)]
53. Gacek, K.; Bayer, P.E.; Bartkowiak-Broda, I.; Szala, L.; Bocianowski, J.; Edwards, D.; Batley, J. Genome-wide association study of genetic control of seed fatty acid biosynthesis in *Brassica napus*. *Front. Plant Sci.* **2017**, *7*, 2062. [[CrossRef](#)] [[PubMed](#)]
54. Blotta, I.; Prestinaci, F.; Mirante, S.; Cantafora, A. Quantitative assay of total dsDNA with PicoGreen reagent and real-time fluorescent detection. *Ann. Ist Super Sanita* **2005**, *41*, 119–123.
55. Langmead, B.; Trapnell, C.; Pop, M.; Salzberg, S.L. Ultrafast and memory-efficient alignment of short DNA sequences to the human genome. *Genome Biol.* **2009**, *10*, R25. [[CrossRef](#)]

56. Langmead, B.; Salzberg, S.L. Fast gapped-read alignment with Bowtie 2. *Nat. Methods* **2012**, *9*, 357–359. [[CrossRef](#)]
57. Li, Y.L.; Weng, J.C.; Hsiao, C.C.; Chou, M.T.; Tseng, C.W.; Hung, J.H. PEAT: An intelligent and efficient paired-end sequencing adapter trimming algorithm. *BMC Bioinform.* **2015**, *16*, S2. [[CrossRef](#)]
58. Bolger, A.M.; Lohse, M.; Usadel, B. Trimmomatic: A flexible trimmer for Illumina sequence data. *Bioinformatics* **2014**, *30*, 2114–2120. [[CrossRef](#)]
59. Luo, R.; Liu, B.; Xie, Y.; Li, Z.; Huang, W.; Yuan, J.; He, G.; Chen, Y.; Pan, Q.; Liu, Y.; et al. SOAPdenovo2: An empirically improved memory-efficient shortread *de novo* assembler. *GigaScience* **2012**, *1*, 18. [[CrossRef](#)]
60. Camacho, C.; Coulouris, G.; Avagyan, V.; Ma, N.; Papadopoulos, J.; Bealer, K.; Madden, T.L. BLAST+: Architecture and applications. *BMC Bioinform.* **2009**, *10*, 421. [[CrossRef](#)] [[PubMed](#)]
61. Bairoch, A.; Boeckmann, B.; Ferro, S.; Gasteiger, E. Swiss-Prot: Juggling between evolution and stability. *Brief. Bioinform.* **2004**, *5*, 39–55. [[CrossRef](#)] [[PubMed](#)]
62. Li, H.; Durbin, R. Fast and accurate short read alignment with Burrows–Wheeler transform. *Bioinformatics* **2009**, *25*, 1754–1760. [[CrossRef](#)]
63. Garrison, E.; Marth, G. Haplotype-based variant detection from short-read sequencing. *arXiv* **2012**, arXiv:1207.3907.
64. Pedersen, B.S.; Layer, R.M.; Quinlan, A.R. Vcfanno: Fast, flexible annotation of genetic variants. *Genome Biol.* **2016**, *17*, 118. [[CrossRef](#)]
65. Zheng, X.; Levine, D.; Shen, J.; Gogarten, S.M.; Laurie, C.; Weir, B.S. A high-performance computing toolset for relatedness and principal component analysis of SNP data. *Bioinformatics* **2012**, *28*, 3326–3328. [[CrossRef](#)]
66. Danecek, P.; Auton, A.; Abecasis, G.; Albers, C.A.; Banks, E.; DePristo, M.A.; Handsaker, R.E.; Lunter, G.; Marth, G.T.; Sherry, S.T.; et al. The variant call format and VCFtools. *Bioinformatics* **2011**, *27*, 2156–2158. [[CrossRef](#)]
67. Duforet-Frebourg, N.; Luu, K.; Laval, G.; Bazin, E.; Blum, M.G. Detecting genomic signatures of natural selection with principal component analysis: Application to the 1000 Genomes data. *Mol. Biol. Evol.* **2015**, *334*, 1082–1093. [[CrossRef](#)]
68. Luu, K.; Bazin, E.; Blum, M.G.B. pcadapt: An R package to perform genome scans for selection based on principal component analysis. *Mol. Ecol. Resour.* **2017**, *17*, 67–77. [[CrossRef](#)]
69. Ryman, N.; Palm, S. POWSIM: A computer program for assessing statistical power when testing for genetic differentiation. *Mol. Ecol. Notes* **2006**, *6*, 600–602. [[CrossRef](#)]
70. Jombart, T. adegenet: An R package for the multivariate analysis of genetic markers. *Bioinformatics* **2008**, *24*, 1403–1405. [[CrossRef](#)] [[PubMed](#)]
71. Meirmans, P.G.; van Tienderen, P.H. GENOTYPE and GENODIVE: Two programs for the analysis of genetic diversity of asexual organisms. *Mol. Ecol. Notes* **2004**, *4*, 792–794. [[CrossRef](#)]
72. Pritchard, J.K.; Stephens, M.; Donnelly, P. Inference of population structure using multilocus genotype data. *Genetics* **2000**, *155*, 945–959. [[PubMed](#)]
73. Evanno, G.; Regnaut, S.; Goudet, J. Detecting the number of clusters of individuals using the software structure: A simulation study. *Mol. Ecol.* **2005**, *14*, 2611–2620. [[CrossRef](#)]
74. Earl, D.A.; vonHoldt, B.M. STRUCTURE HARVESTER: A website and program for visualizing STRUCTURE output and implementing the Evanno method. *Conserv. Genet. Resour.* **2012**, *4*, 359–361. [[CrossRef](#)]
75. Kopelman, N.M.; Mayzel, J.; Jakobsson, M.; Rosenberg, N.A.; Mayrose, I. Clumpak: A program for identifying clustering modes and packaging population structure inferences across K. *Mol. Ecol. Resour.* **2015**, *15*, 1179–1191. [[CrossRef](#)] [[PubMed](#)]
76. Xie, C.; Mao, X.; Huang, J.; Ding, Y.; Wu, J.; Dong, S.; Kong, L.; Gao, G.; Li, C.Y.; Wei, L. KOBAS 2.0: A web server for annotation and identification of enriched pathways and diseases. *Nucleic Acids Res.* **2011**, *39*, W316–W322. [[CrossRef](#)]
77. Hollenbeck, C.M.; Portnoy, D.S.; Gold, J.R. Evolution of population structure in an estuarine-dependent marine fish. *Ecol. Evol.* **2019**, *9*, 3141–3152. [[CrossRef](#)]
78. Milano, I.; Babbucci, M.; Cariani, A.; Atanassova, M.; Bekkevold, D.; Carvalho, G.R.; Espiñeira, M.; Fiorentino, F.; Garofalo, G.; Geffen, A.J.; et al. Outlier SNP markers reveal fine-scale genetic structuring across European hake populations (*Merluccius merluccius*). *Mol. Ecol.* **2014**, *23*, 118–135. [[CrossRef](#)]

79. Purves, W.K.; Sadava, D.; Orians, G.H.; Heller, H.C. Genetic drift may cause large changes in small populations. In *Life: The Science of Biology*, 7th ed.; Sinauer Associates, Inc.: Sunderland, MA, USA, 2003; pp. 468–469.
80. Nazareno, A.G.; Bemmels, J.B.; Dick, C.W.; Lohmann, L.G. Minimum sample sizes for population genomics: An empirical study from an Amazonian plant species. *Mol. Ecol. Resour.* **2017**, *17*, 1136–1147. [[CrossRef](#)] [[PubMed](#)]
81. Jeffries, D.L.; Copp, G.H.; Lawson Handley, L.; Olsén, K.H.; Sayer, C.D.; Hänfling, B. Comparing RAD seq and microsatellites to infer complex phylogeographic patterns, an empirical perspective in the Crucian carp, *Carassius carassius*, L. *Mol. Ecol.* **2016**, *25*, 2997–3018. [[CrossRef](#)] [[PubMed](#)]
82. Puckett, E.E.; Eggert, L.S. Comparison of SNP and microsatellite genotyping panels for spatial assignment of individuals to natal range: A case study using the American black bear (*Ursus americanus*). *Biol. Conserv.* **2016**, *193*, 86–93. [[CrossRef](#)]
83. Qu, W.M.; Liang, N.; Wu, Z.K.; Zhao, Y.G.; Chu, D. Minimum sample sizes for invasion genomics: Empirical investigation in an invasive whitefly. *Ecol. Evol.* **2020**, *10*, 38–49. [[CrossRef](#)] [[PubMed](#)]
84. Li, H.; Qu, W.; Obrycki, J.J.; Meng, L.; Zhou, X.; Chu, D.; Li, B. Optimizing Sample Size for Population Genomic Study in a Global Invasive Lady Beetle, *Harmonia Axyridis*. *Insects* **2020**, *11*, 290. [[CrossRef](#)]
85. Flesch, E.P.; Rotella, J.J.; Thomson, J.M.; Graves, T.A.; Garrott, R.A. Evaluating sample size to estimate genetic management metrics in the genomics era. *Mol. Ecol. Resour.* **2018**, *18*, 1077–1091. [[CrossRef](#)]
86. Thanh, H.N.; Liu, Q.; Zhao, L.; Zhang, H.; Liu, J. Genetic diversity of the cultured giant freshwater prawn (*Macrobrachium rosenbergii*) in China based on microsatellite markers. *Biochem. Syst. Ecol.* **2015**, *59*, 144–154. [[CrossRef](#)]
87. Miao, W.M.; Ge, X.P. Freshwater prawn culture in China: An overview. *Aquaculture Asia* **2002**, *VII*, 9–12.
88. Rhode, C.; Hepple, J.; Jansen, S.; Davis, T.; Vervalle, J.; Bester-van der Merwe, A.E.; Roodt-Wilding, R. A population genetic analysis of abalone domestication events in South Africa: Implications for the management of the abalone resource. *Aquaculture* **2012**, *356–357*, 235–242. [[CrossRef](#)]
89. An, H.A.; Wook, J.; Kim, H.C.; Myeong, J. Genetic characterization of five hatchery populations of pacific abalone (*Haliotis discus hannai*) using microsatellite markers. *Int. J. Mol. Sci.* **2011**, *12*, 4836–4849. [[CrossRef](#)]
90. Norris, A.T.; Bradley, D.G.; Cunningham, E.P. Microsatellite genetic variation between and within farmed and wild Atlantic salmon (*Salmo salar*) populations. *Aquaculture* **1999**, *180*, 247–264. [[CrossRef](#)]
91. Zhang, D.C.; Yu, L.N.; Fang, Y.L. A study on genetic diversity of wild and cultured grass carp populations using RAPD. *Freshw. Fish* **2004**, *4*, 5–7.
92. Liu, F.; Xia, J.; Bai, Z.; Fu, J.; Li, J.; Yue, G.H. High genetic diversity and substantial population differentiation in grass carp (*Ctenopharyngodon idella*) revealed by microsatellite analysis. *Aquaculture* **2009**, *297*, 51–56. [[CrossRef](#)]
93. Yue, G.H.; Zhu, Z.Y.; Lo, L.C.; Wang, C.M.; Lin, G.; Feng, F.; Pang, H.Y.; Li, J.; Gong, P.; Liu, H.M.; et al. Genetic variation and population structure of Asian seabass (*Lates calcarifer*) in the Asia-Pacific region. *Aquaculture* **2009**, *293*, 22–28. [[CrossRef](#)]
94. Li, L.; Lin, H.; Tang, W.; Liu, D.; Bao, B.; Yang, J. Population genetic structure in wild and aquaculture populations of *Hemibarbus maculatus* inferred from microsatellites markers. *Aquac. Fish.* **2017**, *2*, 78–83. [[CrossRef](#)]
95. Tassanakajon, A.; Pongsomboon, S.; Jarayabhand, P.; Klinbunga, S.; Boonsaeng, V. Genetic structure in wild populations of black tiger shrimp *Penaeus monodon* using randomly amplified polymorphic DNA analysis. *J. Mar. Biotechnol.* **1998**, *6*, 249–254.
96. Benzie, J.A.H.; Frusher, S.; Ballment, E. Geographical variation in allozyme frequencies of populations of *Penaeus monodon* Crustacea: Decapoda in Australia. *Aust. J. Mar. Freshw. Res.* **1992**, *43*, 715–725. [[CrossRef](#)]
97. Sekino, M.; Hara, M.; Taniguchi, N. Loss of microsatellite and mitochondrial DNA variation in hatchery strains of Japanese flounder *Paralichthys olivaceus*. *Aquaculture* **2002**, *213*, 101–122. [[CrossRef](#)]
98. Lundrigan, T.A.; Reist, J.D.; Ferguson, M.M. Microsatellite genetic variation within and among Arctic charr (*Salvelinus alpinus*) from aquaculture and natural populations in North America. *Aquaculture* **2005**, *244*, 63–75. [[CrossRef](#)]
99. Kohlmann, K.; Kersten, P.; Flajshans, M. Microsatellite-based genetic variability and differentiation of domesticated, wild and feral common carp (*Cyprinus carpio* L.) populations. *Aquaculture* **2005**, *247*, 253–266. [[CrossRef](#)]

100. Koljonen, M.L.; Tähtinen, J.; Säisä, M.; Koskiniemi, J. Maintenance of genetic diversity of Atlantic salmon (*Salmo salar*) by captive breeding programmes and the geographic distribution of microsatellite variation. *Aquaculture* **2002**, *212*, 69–92. [[CrossRef](#)]
101. Wang, L.; Meng, Z.; Liu, X.; Zhang, Y.; Lin, H. Genetic Diversity and differentiation of the Orange Spotted Grouper (*Epinephelus coioides*) between and within cultured stocks and wild populations Inferred from Microsatellite DNA analysis. *Int. J. Mol. Sci.* **2011**, *12*, 4378–4394. [[CrossRef](#)] [[PubMed](#)]
102. Bester-van der Merwe, A.E.; Roodt-Wilding, R.; Volckaert, F.A.M.; D’Amato, M.E. Historical isolation and hydrodynamically constrained gene flow in declining population of the South-African abalone, *Haliotis midae*. *Conserv. Genet.* **2011**, *12*, 543–555. [[CrossRef](#)]
103. Alejandrino, A.; Puslednik, L.; Serb, J.M. Convergent and parallel evolution in life habit of the scallops (Bivalvia: Pectinidae). *BMC Evol. Biol.* **2011**, *11*, 164. [[CrossRef](#)]
104. Lester, L.J. Population genetics of penaeid shrimp from the Gulf of Mexico. *J. Hered.* **1979**, *70*, 175–180. [[CrossRef](#)]
105. Benzie, J.A.H.; Ballment, E.; Frusher, S. Genetic structure of *Penaeus monodon* in Australia: Concordant results from mtDNA and allozymes. *Aquaculture* **1993**, *111*, 89–93. [[CrossRef](#)]
106. Wade, M.J. Extinction and recolonization: Their effects on the genetic differentiation of local population. *Evolution* **1988**, *42*, 995–1005. [[CrossRef](#)]
107. Li, J.; Wang, G.; Bai, Z. Genetic variability in four wild and two farmed stocks of the Chinese freshwater pearl mussel (*Hyriopsis cumingii*) estimated by microsatellite DNA Markers. *Aquaculture* **2009**, *287*, 286–291. [[CrossRef](#)]
108. Qi, P.; Qin, J.; Xie, C. Determination of genetic diversity of wild and cultured topmouth culter (*Culter alburnus*) inhabiting China using mitochondrial DNA and microsatellites. *Biochem. Syst. Ecol.* **2015**, *61*, 232–239. [[CrossRef](#)]
109. Hemmer-Hansen, J.; Nielsen, E.E.; Frydenberg, J.; Loeschcke, V. Adaptive divergence in a high gene flow environment: Hsc70 variation in the European flounder (*Platichthys flesus* L.). *Heredity* **2007**, *99*, 592–600. [[CrossRef](#)]
110. Nielsen, E.E.; Hemmer-Jansen, J.; Larsen, P.F.; Bekkevold, D. Population genomics of marine fishes: Identifying adaptive variation in space and time. *Mol. Ecol.* **2009**, *18*, 3128–3150. [[CrossRef](#)] [[PubMed](#)]
111. Schmidt, P.S.; Serrão, E.A.; Pearson, G.A.; Riginos, C.; Rawson, P.D.; Hilbish, T.J.; Brawley, S.H.; Trussell, G.C.; Carrington, E.; Wetthey, D.S.; et al. Ecological genetics in the North Atlantic: Environmental gradients and adaptation at specific loci. *Ecology* **2008**, *89*, S91–S107. [[CrossRef](#)] [[PubMed](#)]
112. Asaduzzaman, M.; Igarashi, Y.; Wahab, M.A.; Nahiduzzaman, M.; Rahman, M.J.; Phillips, M.J.; Huang, S.; Asakawa, S.; Rahman, M.M.; Wong, L.L. Population Genomics of an Anadromous Hilsa Shad *Tenualosa ilisha* Species across its diverse migratory habitats: Discrimination by fine-scale local adaptation. *Genes* **2020**, *11*, 46. [[CrossRef](#)] [[PubMed](#)]
113. Asaduzzaman, M.; Wahab, M.A.; Rahman, M.M.; Mariom; Nahiduzzaman, M.; Rahman, M.J.; Roy, B.K.; Phillips, M.J.; Wong, L.L. Morpho-Genetic Divergence and Adaptation of Anadromous Hilsa shad (*Tenualosa ilisha*) Along Their Heterogenic Migratory Habitats. *Front. Mar. Sci.* **2020**, *7*, 554. [[CrossRef](#)]
114. Avise, J.C.; Arnold, J.; Ball, R.M.; Bermingham, E.; Lamb, T.; Neigel, J.E.; Reeb, C.A.; Saunders, N.C. Intraspecific phylogeography: The mitochondrial DNA bridge between population genetics and systematics. *Annu. Rev. Ecol. Syst.* **1987**, *18*, 489–522. [[CrossRef](#)]
115. Moritz, C.; Dowling, T.E.; Brown, W.M. Evolution of animal mitochondrial DNA: Relevance for population biology and systematics. *Annu. Rev. Ecol. Syst.* **1987**, *18*, 269–292. [[CrossRef](#)]
116. Ballard, J.W.O.; Kreitman, M. Is mitochondrial DNA a strictly neutral marker? *Trends Ecol. Evol.* **1995**, *10*, 485–488. [[CrossRef](#)]
117. Ciborowski, K.L.; Consuegra, S.; García de Leániz, C.; Wang, J.; Beaumont, M.A.; Jordan, W.C. Stocking may increase mitochondrial DNA diversity but fails to halt the decline of endangered Atlantic salmon populations. *Conserv. Genet.* **2007**, *8*, 1355–1367. [[CrossRef](#)]
118. Blier, P.U.; Dufresne, F.; Burton, R.S. Natural selection and the evolution of mtDNA-encoded peptides: Evidence for intergenomic co-adaptation. *Trends Genet.* **2001**, *17*, 400–406. [[CrossRef](#)]
119. Moreno-Sánchez, R.; Hogue, B.A.; Hansford, R.G. Influence of NAD-linked dehydrogenase activity on flux through oxidative phosphorylation. *Biochem. J.* **1990**, *268*, 421–428. [[CrossRef](#)]

120. Bai, Y.; Shakeley, R.M.; Attardi, G. Tight control of respiration by NADH Dehydrogenase ND5 subunit gene expression in mouse mitochondria. *Mol. Cell Biol.* **2000**, *20*, 805–815. [[CrossRef](#)] [[PubMed](#)]
121. Meiklejohn, C.D.; Montooth, K.L.; Ran, D.M. Positive and negative selection on the mitochondrial genome. *Trends Genet.* **2007**, *23*, 259–263. [[CrossRef](#)]
122. Blier, P.U.; Guderley, H.E. Mitochondrial activity in rainbow trout red muscle: The effect of temperature on the ADP-dependence of ATP synthesis. *J. Exp. Biol.* **1993**, *176*, 145–158.
123. Brown, K.H.; Lee, R.W.; Thorgaard, G.H. Use of androgenesis for estimating maternal and mitochondrial genome effects on development and oxygen consumption in rainbow trout, *Oncorhynchus mykiss*. *Comp. Biochem. Physiol. Part B Biochem. Mol. Biol.* **2006**, *143*, 415–421. [[CrossRef](#)] [[PubMed](#)]
124. Kivisild, T. Maternal ancestry and population history from whole mitochondrial genomes. *Investig. Genet.* **2015**, *6*, 3. [[CrossRef](#)] [[PubMed](#)]
125. Kelley, D.E.; He, J.; Menshikova, E.V.; Ritov, V.B. Dysfunction of mitochondria in human skeletal muscle in type 2 diabetes. *Diabetes/Metab. Res. Rev.* **2002**, *51*, 2944–2950. [[CrossRef](#)]
126. Einum, S.; Fleming, I.A. Highly fecund mothers sacrifice offspring survival to maximize fitness. *Nature* **2000**, *405*, 565–567. [[CrossRef](#)]
127. Rand, D.M.; Haney, R.A.; Fry, A.J. Cytonuclear coevolution: The genomics of cooperation. *Trends Ecol. Evol.* **2004**, *19*, 645–653. [[CrossRef](#)]
128. Das, J. The role of mitochondrial respiration in physiological and evolutionary adaptation. *BioEssays* **2006**, *28*, 890–901. [[CrossRef](#)]
129. Zhao, X.; Gou, X.; Qin, Z.; Li, D.; Wang, Y.; Ma, E.; Li, S.; Zhang, J. Identification and expression of cuticular protein genes based on *Locusta migratoria* transcriptome. *Sci. Rep.* **2017**, *7*, 45462. [[CrossRef](#)]
130. McKay, S.E.; Purcell, A.L.; Carew, T.J. Regulation of synaptic function by neurotrophic factors in vertebrates and invertebrates: Implications for development and learning. *Learn. Mem.* **1999**, *6*, 193–215. [[PubMed](#)]
131. Saleem, M.; Qadir, M.I.; Perveen, N.; Ahmad, B.; Saleem, U.; Irshad, T.; Ahmad, B. Inhibitors of apoptotic proteins: New targets for anticancer therapy. *Chem. Biol. Drug. Des.* **2013**, *82*, 243–251. [[CrossRef](#)] [[PubMed](#)]
132. Twigg, M.; Brockbank, S.; Lowry, P.; FitzGerald, S.P.; Taggart, C.; Weldon, S. The role of serine proteases and antiproteases in the cystic fibrosis lung. *Mediat. Inflamm.* **2015**, *293053*, 10. [[CrossRef](#)] [[PubMed](#)]



© 2020 by the authors. Licensee MDPI, Basel, Switzerland. This article is an open access article distributed under the terms and conditions of the Creative Commons Attribution (CC BY) license (<http://creativecommons.org/licenses/by/4.0/>).