

# Small-angle neutron scattering correlation functions of bulk magnetic materials

Denis Mettus and Andreas Michels\*

Physics and Materials Science Research Unit, University of Luxembourg, 162A Avenue de la Faiencerie, L-1511 Luxembourg, Luxembourg. \*Correspondence e-mail: andreas.michels@uni.lu

Received 9 April 2015

Accepted 9 July 2015

Edited by A. J. Allen, National Institute of Standards and Technology, Gaithersburg, USA

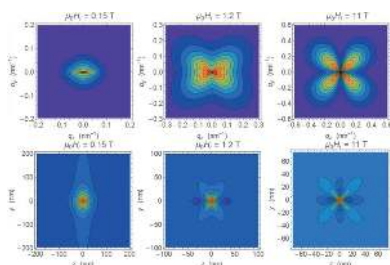
**Keywords:** small-angle neutron scattering; correlation function; micromagnetics; magnetic materials.

On the basis of the continuum theory of micromagnetics, the correlation function of the spin-misalignment small-angle neutron scattering cross section of bulk ferromagnets (*e.g.* elemental polycrystalline ferromagnets, soft and hard magnetic nanocomposites, nanoporous ferromagnets, or magnetic steels) is computed. For such materials, the spin disorder which is related to spatial variations in the saturation magnetization and magnetic anisotropy field results in strong spin-misalignment scattering  $d\Sigma_M/d\Omega$  along the forward direction. When the applied magnetic field is perpendicular to the incoming neutron beam, the characteristics of  $d\Sigma_M/d\Omega$  (*e.g.* the angular anisotropy on a two-dimensional detector or the asymptotic power-law exponent) are determined by the ratio of magnetic anisotropy field strength  $H_p$  to the jump  $\Delta M$  in the saturation magnetization at internal interfaces. Here, the corresponding one- and two-dimensional real-space correlations are analyzed as a function of applied magnetic field, the ratio  $H_p/\Delta M$ , the single-particle form factor and the particle volume fraction. Finally, the theoretical results for the correlation function are compared with experimental data on nanocrystalline cobalt and nickel.

## 1. Introduction

Small-angle neutron scattering (SANS) is a very popular method for investigating nanoscale structural and magnetic inhomogeneities in the bulk of materials. In most situations, SANS data are analyzed in reciprocal space, by fitting a particular model to the experimental SANS cross section. An alternative real-space approach to analyzing SANS data is the computation of the (auto)correlation function of the system, for instance by means of the indirect Fourier transformation technique (Glatter, 1977; Hansen, 2000; Fritz & Glatter, 2006; Hansen, 2012), which has recently been extended to allow for the analysis of two-dimensional small-angle scattering patterns of oriented samples (Fritz-Popovski, 2013; Fritz-Popovski, 2015). For dilute, monodisperse and uniform particle–matrix systems, several analytical expressions for the density–density autocorrelation function  $\gamma(r)$  or, likewise, for the distance distribution function  $p(r) = r^2\gamma(r)$  have been derived (see *e.g.* Svergun & Koch, 2003); this is a well established procedure in small-angle X-ray scattering and in nuclear SANS, *e.g.* in the analysis of polymers (Mortensen & Pedersen, 1993) or in the study of the formation of magnetic nanocrystals in glass ceramics (Lembke *et al.*, 1999).

In the context of real-space analysis of scattering data, it is also worth mentioning the recent progress made in the computation of the magnetic pair distribution function (Frandsen *et al.*, 2014), which is obtained *via* Fourier transformation of the magnetic neutron scattering cross section. This approach permits the analysis of long- and short-range magnetic correlations of a wide range of magnetic structures



OPEN ACCESS

such as spin-density waves, spin-ice compounds or molecular magnets.

We have recently provided a theory of magnetic SANS of polycrystalline bulk ferromagnets (Honecker & Michels, 2013), which was successfully employed in order to analyze the magnetic microstructure of iron-based two-phase nanocomposites (Honecker *et al.*, 2013). In addition to nanocomposites, the theory is also applicable to the study of elemental ferromagnets, nanoporous magnets or ferromagnetic steels; it provides information on the exchange-stiffness constant, as well as on the strength and spatial structure of the magnetic anisotropy and magnetostatic field.

Magnetic SANS of statistically isotropic bulk ferromagnets is, in contrast to nuclear SANS on such structures, highly anisotropic, *i.e.* the magnetic SANS cross section depends not only on the magnitude but also on the orientation of the momentum-transfer vector. The results for the Fourier coefficients of the magnetization (Honecker & Michels, 2013) demonstrate the unmistakable impact of the magnetodipolar interaction on magnetic SANS. Magnetostatics is essential for understanding the complex magnetic field-dependent angular anisotropies which may be observed on a two-dimensional position-sensitive detector; these anisotropies go beyond the well known ‘ $\sin^2 \theta$ ’ anisotropy of magnetic SANS. Furthermore, the classical particle–matrix concept of small-angle scattering is not adapted to the complex magnetic textures that may form inside the bulk of magnetic media [see discussion in the introduction of Michels (2014)]; for such materials, the continuum theory of micromagnetics (Brown, 1963) provides the proper theoretical framework for computing the magnetic SANS cross section. It is the purpose of this paper to provide a discussion of the predictions of our micromagnetic SANS theory in real space by calculating the correlation function of the spin-misalignment SANS cross section.

The paper is organized as follows: §2 introduces the model for the magnetic microstructure of bulk ferromagnets, which underlies our magnetic SANS theory; in §3, we summarize the main expressions for the unpolarized magnetic SANS cross section; in §4, we define the correlation function of the spin-misalignment SANS cross section, and we compare its definition with the corresponding result from nuclear SANS theory; §5 details the models for the anisotropy field and longitudinal magnetization Fourier coefficient; in §6, we discuss the results for the correlation functions and correlation lengths, and we provide a comparison with experimental data; §7 summarizes the main findings of this study.

## 2. Model for the magnetic microstructure of bulk ferromagnets

We consider polycrystalline statistically isotropic bulk ferromagnets. Examples of such materials are inert-gas condensed single-phase elemental ferromagnets (Weissmüller *et al.*, 2004; Löffler *et al.*, 2005; Michels *et al.*, 2008, 2009; Döbrich *et al.*, 2012), soft magnetic two-phase nanocomposites from the FINEMET (VITROPERM) or NANOPERM family of alloys

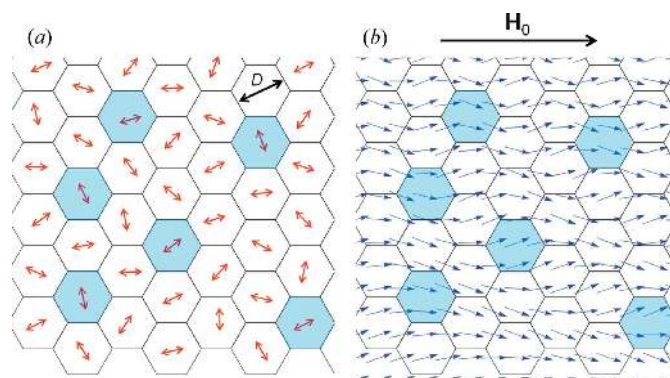
(Ohnuma *et al.*, 2000; Heinemann *et al.*, 2000; Michels *et al.*, 2006), NdFeB-based permanent magnets (Bick *et al.*, 2013; Périgo *et al.*, 2015), and magnetic steels (Coppola *et al.*, 1998; Bischof *et al.*, 2007; Michaud *et al.*, 2007; Alinger *et al.*, 2009; Bergner *et al.*, 2013). Fig. 1(a) shows a sketch of the nuclear (grain) microstructure of such a material, and Fig. 1(b) displays qualitatively the magnetic (spin) distribution at a nearly saturating applied magnetic field.

On the basis of the continuum theory of micromagnetics (Brown, 1963), we have provided (Honecker & Michels, 2013) a first-order theory for the magnetic spin-misalignment SANS cross section of weakly inhomogeneous bulk ferromagnets, which accounts for spatial variations in the magnetic anisotropy and saturation magnetization. The theory, valid close to magnetic saturation, is based on the solution of the well known balance-of-torques equation,

$$\mathbf{M}(\mathbf{r}) \times \mathbf{H}_{\text{eff}}(\mathbf{r}) = 0, \quad (1)$$

which expresses the fact that at static equilibrium the torque on the magnetization vector field  $\mathbf{M}(\mathbf{r})$  due to an effective magnetic field  $\mathbf{H}_{\text{eff}}(\mathbf{r})$  vanishes everywhere inside the material. The effective field

$$\mathbf{H}_{\text{eff}}(\mathbf{r}) = \mathbf{H}_0 + \mathbf{H}_d(\mathbf{r}) + \mathbf{H}_p(\mathbf{r}) + \mathbf{H}_{\text{ex}}(\mathbf{r}) \quad (2)$$



**Figure 1** Model for the magnetic microstructure of bulk ferromagnets. (a) Sketch of an idealized two-dimensional (nuclear) grain microstructure. The two main sources that cause a perturbation of the magnetic microstructure are identified in our magnetic SANS theory (Honecker & Michels, 2013) as (i) spatial (random) variations in the direction and/or magnitude of the magnetic anisotropy field and (ii) spatial variations in the magnitude of the saturation magnetization. The characteristic length scales (correlation lengths) over which such variations occur may be related, for example, to the average particle or crystallite size  $D$ , which for bulk nanomagnets is typically of the order of 10–20 nm. In (a), the crystallographic set of easy axes for the magnetization changes randomly at each internal interface (*e.g.* a grain boundary); for simplicity, we have here assumed a uniaxial magnetic anisotropy ( $\uparrow$ ). In addition, the magnetic material’s parameters (exchange constant  $A$ , anisotropy constant  $K$  and saturation magnetization  $M_s$ ) may depend on the position inside the material [which is symbolized by grains (cells) with different color]. (b) Superposed (magnetic) spin microstructure in the presence of a strong applied magnetic field  $\mathbf{H}_0$ . The shown coarse-grained distribution of spins is only qualitative, but suggests the existence of continuously varying nanoscale magnetization profiles, which give rise to a strongly field-dependent magnetic SANS cross section. Note also the absence of sharp interfaces in the magnetic microstructure (b), in contrast to the grain microstructure (a).

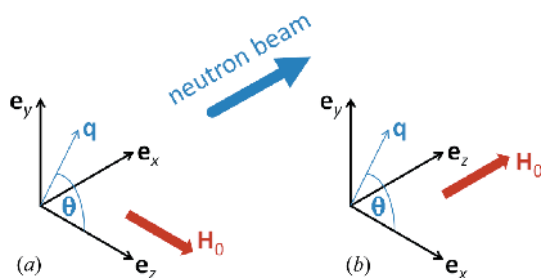
is composed of a uniform applied magnetic field  $\mathbf{H}_0$ , the magnetostatic field  $\mathbf{H}_d(\mathbf{r})$ , the magnetic anisotropy field  $\mathbf{H}_p(\mathbf{r})$  and the exchange field  $\mathbf{H}_{ex}(\mathbf{r})$ . The general solution of equation (1) for the transverse magnetization Fourier coefficients (in the high-field limit) is given in Appendix A. Metlov & Michels (2015) extended the first-order theory to second order in the amplitudes of the inhomogeneities (including fluctuations in the exchange interaction), and the corresponding magnetic SANS cross section was computed up to the third order. For the sake of a self-contained presentation, we summarize in §3 the main results for the magnetic SANS cross section of bulk magnetic materials.

### 3. Magnetic SANS theory of bulk ferromagnets – unpolarized neutrons

Since the spin-misalignment scattering of bulk ferromagnets is independent of the polarization of the incident neutron beam, it is sufficient to restrict the considerations for the correlation function to the unpolarized cross section. As discussed by Michels (2014), half-polarized (SANSPOL) experiments on bulk magnetic materials do not provide significantly more information regarding the spin-misalignment SANS than can already be learned from the analysis of unpolarized data; this is because the SANSPOL ‘spin-up’ and ‘spin-down’ cross sections differ essentially only by a nuclear-magnetic interference term  $\pm \tilde{N}\tilde{M}_z$ , which is usually small and weakly field dependent as compared to the spin-misalignment SANS. In order to demonstrate the main effects, we concentrate in the following on the unpolarized magnetic SANS of bulk ferromagnets in the two scattering geometries that have the applied magnetic field  $\mathbf{H}_0$  either perpendicular or parallel to the incident neutron-beam direction (see Fig. 2). The corresponding equations for polarized SANS and, in particular, the spin-flip (POLARIS) equations are given by Honecker *et al.* (2010) and Michels (2014).

#### 3.1. $\mathbf{k}_0 \perp \mathbf{H}_0$

For the scattering geometry where the applied magnetic field  $\mathbf{H}_0 \parallel \mathbf{e}_z$  is perpendicular to the wavevector  $\mathbf{k}_0$  of the



**Figure 2**  
Sketch of the two most often employed scattering geometries in magnetic SANS experiments. (a)  $\mathbf{k}_0 \perp \mathbf{H}_0$ ; (b)  $\mathbf{k}_0 \parallel \mathbf{H}_0$ . We emphasize that in both geometries the applied-field direction  $\mathbf{H}_0$  defines the  $\mathbf{e}_z$  direction of a Cartesian laboratory coordinate system. The angle  $\theta$  specifies the orientation of the scattering vector on the two-dimensional detector;  $\theta$  is measured between  $\mathbf{H}_0 \parallel \mathbf{e}_z$  and  $\mathbf{q} \cong (0, q_y, q_z)$  (a) and between  $\mathbf{e}_x$  and  $\mathbf{q} \cong (q_x, q_y, 0)$  (b).

incoming neutron beam (compare Fig. 2a), the elastic unpolarized SANS cross section  $d\Sigma/d\Omega$  at scattering vector  $\mathbf{q}$  can be written as (Michels, 2014)

$$\frac{d\Sigma}{d\Omega}(\mathbf{q}) = \frac{8\pi^3}{V} \left[ |\tilde{N}|^2 + b_H^2 |\tilde{M}_x|^2 + b_H^2 |\tilde{M}_y|^2 \cos^2 \theta + b_H^2 |\tilde{M}_z|^2 \sin^2 \theta - b_H^2 (\tilde{M}_y \tilde{M}_z^* + \tilde{M}_y^* \tilde{M}_z) \sin \theta \cos \theta \right]. \quad (3)$$

$|\mathbf{q}| = q = (4\pi/\lambda) \sin \psi$ , where  $\psi$  is half the scattering angle and  $\lambda$  is the wavelength of the incident radiation,  $V$  is the scattering volume,  $b_H = 2.91 \times 10^8 \text{ A}^{-1} \text{ m}^{-1}$  relates the atomic magnetic moment to the Bohr magneton,  $\tilde{N}(\mathbf{q})$  and  $\tilde{\mathbf{M}}(\mathbf{q}) = [\tilde{M}_x(\mathbf{q}), \tilde{M}_y(\mathbf{q}), \tilde{M}_z(\mathbf{q})]$  denote, respectively, the Fourier coefficients of the nuclear scattering length density and of the magnetization  $\mathbf{M}(\mathbf{r}) = [M_x(\mathbf{r}), M_y(\mathbf{r}), M_z(\mathbf{r})]$ , and  $\theta$  represents the angle between  $\mathbf{H}_0$  and  $\mathbf{q} \cong q(0, \sin \theta, \cos \theta)$ ; the asterisks (\*) mark the complex conjugate quantity, and the atomic magnetic form factor (in the expression for  $b_H$ ) is approximated to unity (forward scattering).

As shown by Honecker & Michels (2013), near magnetic saturation and for a weakly inhomogeneous bulk ferromagnet,  $d\Sigma/d\Omega$  can be evaluated by means of micromagnetic theory. In particular,

$$\frac{d\Sigma}{d\Omega}(\mathbf{q}) = \frac{d\Sigma_{res}}{d\Omega}(\mathbf{q}) + \frac{d\Sigma_M}{d\Omega}(\mathbf{q}), \quad (4)$$

where

$$\frac{d\Sigma_{res}}{d\Omega}(\mathbf{q}) = \frac{8\pi^3}{V} \left( |\tilde{N}|^2 + b_H^2 |\tilde{M}_z|^2 \sin^2 \theta \right) \quad (5)$$

represents the nuclear and magnetic residual SANS cross section, which is measured at complete magnetic saturation (infinite field), and

$$\frac{d\Sigma_M}{d\Omega}(\mathbf{q}) = S_H(\mathbf{q})R_H(q, \theta, H_i) + S_M(\mathbf{q})R_M(q, \theta, H_i) \quad (6)$$

is the spin-misalignment SANS cross section. The magnetic scattering due to transverse spin components, with related Fourier amplitudes  $\tilde{M}_x(\mathbf{q})$  and  $\tilde{M}_y(\mathbf{q})$ , is contained in  $d\Sigma_M/d\Omega$ , which decomposes into a contribution  $S_H R_H$  due to perturbing magnetic anisotropy fields and a part  $S_M R_M$  related to magnetostatic fields. The micromagnetic SANS theory considers a uniform exchange interaction and a random distribution of magnetic easy axes, but takes explicitly into account variations in the magnitude of the magnetization [via the function  $S_M$ , see equation (8) below].

The anisotropy-field scattering function (in units of  $\text{cm}^{-1} \text{ sr}^{-1}$ )

$$S_H(\mathbf{q}) = \frac{8\pi^3}{V} b_H^2 |h|^2 \quad (7)$$

depends on the Fourier coefficient  $h(\mathbf{q})$  of the magnetic anisotropy field, whereas the scattering function of the longitudinal magnetization (in units of  $\text{cm}^{-1} \text{ sr}^{-1}$ )

$$S_M(\mathbf{q}) = \frac{8\pi^3}{V} b_H^2 |\tilde{M}_z|^2 \quad (8)$$

provides information on the magnitude  $\Delta M \propto \tilde{M}_z$  of the magnetization jump at internal (*e.g.* particle–matrix) interfaces. The corresponding (dimensionless) micromagnetic response functions can be expressed as

$$R_H(q, \theta, H_i) = \frac{p^2}{2} \left[ 1 + \frac{\cos^2 \theta}{(1 + p \sin^2 \theta)^2} \right] \quad (9)$$

and

$$R_M(q, \theta, H_i) = \frac{p^2 \sin^2 \theta \cos^4 \theta}{(1 + p \sin^2 \theta)^2} + \frac{2p \sin^2 \theta \cos^2 \theta}{1 + p \sin^2 \theta}, \quad (10)$$

where

$$p(q, H_i) = \frac{M_s}{H_{\text{eff}}(q, H_i)} \quad (11)$$

is a (dimensionless) function. The effective magnetic field

$$H_{\text{eff}}(q, H_i) = H_i(1 + l_H^2 q^2) \quad (12)$$

depends on the internal magnetic field

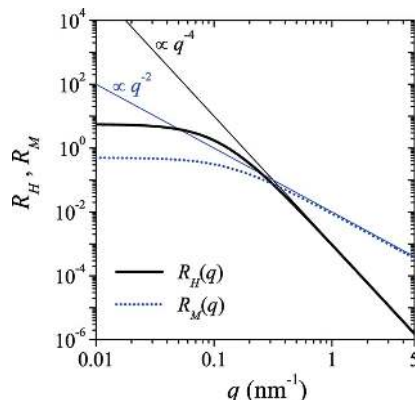
$$H_i = H_0 - N_d M_s, \quad (13)$$

on  $q = |\mathbf{q}|$  and on the exchange length

$$l_H(H_i) = \left( \frac{2A}{\mu_0 M_s H_i} \right)^{1/2} \quad (14)$$

( $M_s$ : saturation magnetization;  $A$ : exchange-stiffness parameter;  $0 < N_d < 1$ : demagnetizing factor;  $\mu_0 = 4\pi \times 10^{-7} \text{ T m A}^{-1}$ ). The  $\theta$  dependence of  $R_H$  and  $R_M$  is essentially a consequence of the magnetodipolar interaction. Depending on the values of  $q$  and  $H_i$ , and on the ratio  $H_p/\Delta M$ , a variety of angular anisotropies may be seen on a two-dimensional detector (see *e.g.* Fig. 11 in §6.2 below) (Michels *et al.*, 2014; Michels, 2014).

By assuming that the functions  $\tilde{N}$ ,  $\tilde{M}_z$  and  $h$  depend only on the magnitude  $q = |\mathbf{q}|$  of the scattering vector, one can perform an azimuthal average of equation (4), *i.e.*  $(2\pi)^{-1} \int_0^{2\pi} (\dots) d\theta$ . The resulting expressions for the response functions then read (see Fig. 3)



**Figure 3**  
The dimensionless micromagnetic response functions  $R_H(q)$  and  $R_M(q)$  [equations (15) and (16)] at  $\mu_0 H_i = 0.5 \text{ T}$  (log–log scale).

$$R_H(q, H_i) = \frac{p^2}{4} \left[ 2 + \frac{1}{(1 + p)^{1/2}} \right] \quad (15)$$

and

$$R_M(q, H_i) = \frac{(1 + p)^{1/2} - 1}{2}, \quad (16)$$

so that the azimuthally averaged total nuclear and magnetic unpolarized SANS cross section of a bulk ferromagnet can be written as

$$\frac{d\Sigma}{d\Omega}(q) = \frac{d\Sigma_{\text{res}}}{d\Omega}(q) + \frac{d\Sigma_M}{d\Omega}(q), \quad (17)$$

where

$$\frac{d\Sigma_{\text{res}}}{d\Omega}(q) = \frac{8\pi^3}{V} \left[ |\tilde{N}(q)|^2 + \frac{1}{2} b_H^2 |\tilde{M}_z(q)|^2 \right] \quad (18)$$

and

$$\frac{d\Sigma_M}{d\Omega}(q) = S_H(q)R_H(q, H_i) + S_M(q)R_M(q, H_i). \quad (19)$$

### 3.2. $\mathbf{k}_0 \perp \mathbf{H}_0$

For the scattering geometry where the external magnetic field  $\mathbf{H}_0 \parallel \mathbf{e}_z$  is parallel to the incident-beam direction  $\mathbf{k}_0$  (compare Fig. 2b), the total unpolarized SANS cross section  $d\Sigma/d\Omega$  can be written as (Michels, 2014)

$$\begin{aligned} \frac{d\Sigma}{d\Omega}(\mathbf{q}) = \frac{8\pi^3}{V} & \left[ |\tilde{N}|^2 + b_H^2 |\tilde{M}_x|^2 \sin^2 \theta \right. \\ & + b_H^2 |\tilde{M}_y|^2 \cos^2 \theta + b_H^2 |\tilde{M}_z|^2 \\ & \left. - b_H^2 (\tilde{M}_x \tilde{M}_y^* + \tilde{M}_x^* \tilde{M}_y) \sin \theta \cos \theta \right], \quad (20) \end{aligned}$$

where  $\theta = \angle(\mathbf{q}; \mathbf{e}_x)$ . Using linearized micromagnetic theory, the azimuthally averaged version of equation (20) can be expressed as

$$\frac{d\Sigma}{d\Omega}(q) = \frac{d\Sigma_{\text{res}}}{d\Omega}(q) + \frac{d\Sigma_M}{d\Omega}(q), \quad (21)$$

where the residual SANS cross section explicitly reads

$$\frac{d\Sigma_{\text{res}}}{d\Omega}(q) = \frac{8\pi^3}{V} \left[ |\tilde{N}(q)|^2 + b_H^2 |\tilde{M}_z(q)|^2 \right] \quad (22)$$

and the spin-misalignment SANS equals

$$\frac{d\Sigma_M}{d\Omega}(q) = S_H(q)R_H(q, H_i), \quad (23)$$

with

$$R_H(q, H_i) = \frac{p^2(q, H_i)}{2}. \quad (24)$$

$S_H(q)$  is given by equation (7), and we note that in this geometry  $d\Sigma_M/d\Omega$  does not depend on  $\tilde{M}_z$  fluctuations and equals the expression for the single-phase material case (Weissmüller *et al.*, 1999), in other words, inhomogeneities in the saturation magnetization are (for  $\mathbf{k}_0 \parallel \mathbf{H}_0$ ) only contained in  $d\Sigma_{\text{res}}/d\Omega$  and not in  $d\Sigma_M/d\Omega$ .

#### 4. Correlation function of the spin-misalignment SANS cross section

Before addressing the magnetic correlation functions, we will briefly recall the corresponding well known results from nuclear SANS theory (Guinier & Fournet, 1955; Porod, 1982; Feigin & Svergun, 1987). The nuclear SANS cross section,

$$\frac{d\Sigma_N}{d\Omega}(\mathbf{q}) = \frac{8\pi^3}{V} |\tilde{N}(\mathbf{q})|^2, \quad (25)$$

can be expressed in terms of the autocorrelation function  $C_N(\mathbf{r})$  of the (excess) nuclear scattering length density  $N(\mathbf{r})$  (in units of  $\text{m}^{-2}$ ) as

$$\frac{d\Sigma_N}{d\Omega}(\mathbf{q}) = \int C_N(\mathbf{r}) \exp(-i\mathbf{q} \cdot \mathbf{r}) d^3r, \quad (26)$$

where

$$C_N(\mathbf{r}) = \frac{1}{V} \int \Delta N(\mathbf{x}) \Delta N(\mathbf{x} + \mathbf{r}) d^3x, \quad (27)$$

and

$$\tilde{N}(\mathbf{q}) = \frac{1}{(2\pi)^{3/2}} \int N(\mathbf{r}) \exp(-i\mathbf{q} \cdot \mathbf{r}) d^3r. \quad (28)$$

The function  $\Delta N(\mathbf{r}) = N(\mathbf{r}) - \langle N \rangle$  denotes the so-called excess scattering length density, where  $\langle N \rangle$  is the (constant) average scattering length density, which only gives a contribution to  $d\Sigma_N/d\Omega$  at  $\mathbf{q} = 0$ . The back-transform of equation (26) is

$$C_N(\mathbf{r}) = \frac{1}{8\pi^3} \int \frac{d\Sigma_N}{d\Omega}(\mathbf{q}) \exp(i\mathbf{q} \cdot \mathbf{r}) d^3q, \quad (29)$$

which for isotropic systems reduces to

$$C_N(r) = \frac{1}{2\pi^2} \int_0^\infty \frac{d\Sigma_N}{d\Omega}(q) \frac{\sin(qr)}{qr} q^2 dq. \quad (30)$$

In analogy to the above formalism, one may define the autocorrelation function of the spin misalignment as (Michels *et al.*, 2003; Weissmüller *et al.*, 2004; Michels, 2010)

$$C_{SM}(\mathbf{r}) = \frac{1}{V} \int \Delta \mathbf{M}(\mathbf{x}) \Delta \mathbf{M}(\mathbf{x} + \mathbf{r}) d^3x, \quad (31)$$

where  $\Delta \mathbf{M}(\mathbf{r}) = \mathbf{M}(\mathbf{r}) - \langle \mathbf{M} \rangle$  denotes the deviation of the local magnetization vector field  $\mathbf{M}(\mathbf{r})$  from the mean magnetization  $\langle \mathbf{M} \rangle$ . Alternatively,  $C_{SM}(\mathbf{r})$  can be expressed as

$$C_{SM}(\mathbf{r}) = \frac{1}{V} \int |\tilde{\Delta \mathbf{M}}(\mathbf{q})|^2 \exp(i\mathbf{q} \cdot \mathbf{r}) d^3q, \quad (32)$$

where  $\tilde{\Delta \mathbf{M}}(\mathbf{q})$  is the Fourier transform of  $\Delta \mathbf{M}(\mathbf{r})$ . In the high-field limit,  $\langle \mathbf{M} \rangle$  is nearly parallel to the applied magnetic field with  $|\langle \mathbf{M} \rangle| \cong M_s$ , so that  $\Delta \mathbf{M}(\mathbf{r}) \cong [M_x(\mathbf{r}), M_y(\mathbf{r}), 0]$  and

$$C_{SM}(\mathbf{r}) = \frac{1}{V} \int [|\tilde{M}_x(\mathbf{q})|^2 + |\tilde{M}_y(\mathbf{q})|^2] \exp(i\mathbf{q} \cdot \mathbf{r}) d^3q. \quad (33)$$

Note that in our theory of magnetic SANS (Honecker & Michels, 2013) the magnetization components  $M_{x,y,z}(\mathbf{r})$  are all considered to be real valued.

Comparison of equations (27) and (31) reveals an important difference between nuclear and magnetic scattering [besides the fact that  $\Delta N(\mathbf{r})$  is a scalar and  $\Delta \mathbf{M}(\mathbf{r})$  a vector quantity]: while the nuclear SANS cross section  $d\Sigma_N/d\Omega$  is directly proportional to the Fourier transform  $|\tilde{N}(\mathbf{q})|^2$  of  $C_N(\mathbf{r})$ , the function  $|\tilde{\Delta \mathbf{M}}(\mathbf{q})|^2$  [being the Fourier transform of  $C_{SM}(\mathbf{r})$ ] does not represent the experimentally measurable quantity  $d\Sigma_M/d\Omega$ , which, according to equations (3) and (20), is a weighted sum of the Cartesian Fourier components  $\tilde{M}_{x,y,z}(\mathbf{q})$  of the magnetization.

Therefore, we define the correlation function  $C(\mathbf{r})$  of the spin-misalignment SANS cross section as the Fourier transform of  $d\Sigma_M/d\Omega$ , for which we have a theory, according to

$$C(\mathbf{r}) = \frac{1}{8\pi^3} \int \frac{d\Sigma_M}{d\Omega}(\mathbf{q}) \exp(i\mathbf{q} \cdot \mathbf{r}) d^3q. \quad (34)$$

The normalized version of equation (34),

$$c(\mathbf{r}) = \frac{C(\mathbf{r})}{C(\mathbf{r} = 0)} = \int \frac{d\Sigma_M}{d\Omega}(\mathbf{q}) \exp(i\mathbf{q} \cdot \mathbf{r}) d^3q \bigg/ \int \frac{d\Sigma_M}{d\Omega}(\mathbf{q}) d^3q, \quad (35)$$

forms the basis for the calculations of the present work. We emphasize that the  $C(\mathbf{r})$  that is defined in this way is not an autocorrelation function, as are  $C_N(\mathbf{r})$  and  $C_{SM}(\mathbf{r})$ . Likewise, the well known result that the evaluation of  $C_N(\mathbf{r})$  and  $C_{SM}(\mathbf{r})$  at the origin  $\mathbf{r} = 0$  yields, respectively, the mean-squared density fluctuation (Porod invariant) and the mean-squared magnetization fluctuation does not pertain to  $C(\mathbf{r})$ ; the integral of  $d\Sigma_M/d\Omega$  over reciprocal space does not provide an obvious invariant of the spin-misalignment SANS.

We remind the reader that  $d\Sigma_M/d\Omega$  at a particular applied magnetic field  $H_i$  can be (approximately) obtained by subtracting the total nuclear and magnetic scattering at a saturating field from the measurement of the total  $d\Sigma/d\Omega$  at the particular  $H_i$ .

The spin-misalignment SANS cross section for the perpendicular scattering geometry depends on both the magnitude  $q$  and the direction  $\theta$  of the scattering vector  $\mathbf{q}$  on the detector (see *e.g.* Fig. 11 in §6.2 below). The  $\theta$  dependence of  $d\Sigma_M/d\Omega$  is a consequence of the magnetodipolar interaction – via the Fourier coefficients  $\tilde{M}_{x,y,z}(q, \theta)$  (Erokhin *et al.*, 2012; Honecker & Michels, 2013; Michels *et al.*, 2014) – and of the trigonometric functions which are explicitly contained in the cross section [equation (3)] and are due to the dipolar nature of the neutron–magnetic interaction. The final expression for the (azimuthally)  $\theta$ -averaged  $d\Sigma_M/d\Omega = (d\Sigma_M/d\Omega)(q)$  [equation (19)] contains the averages over these degrees of freedom. Since from a practical point of view it is easier to work with one-dimensional data, *i.e.* with  $d\Sigma_M/d\Omega = (d\Sigma_M/d\Omega)(q)$ , equation (35) may be simplified to

$$c(r) = \int_0^\infty \frac{d\Sigma_M}{d\Omega}(q) j_0(qr) q^2 dq \bigg/ \int_0^\infty \frac{d\Sigma_M}{d\Omega}(q) q^2 dq, \quad (36)$$

where  $j_0(x) = \sin(x)/x$  denotes the zeroth-order spherical Bessel function. Note that spherical Bessel functions are

denoted with a lower-case ‘ $j$ ’, whereas Bessel functions are represented with an upper-case ‘ $J$ ’. Equation (36), which from now on is called the ‘one-dimensional’ correlation function of the spin-misalignment SANS cross section, has the same mathematical structure as the corresponding equation (30) for nuclear SANS.

Since for statistically isotropic bulk ferromagnets  $d\Sigma_M/d\Omega$  in the parallel scattering geometry is isotropic (independent of the angle  $\theta$ ) (Michels *et al.*, 2014), equation (36) also applies to  $\mathbf{k}_0 \parallel \mathbf{H}_0$ .

In a SANS experiment, only the components of the momentum-transfer vector  $\mathbf{q}$  perpendicular to the incident-beam direction ( $\mathbf{k}_0$ ) are effectively probed, which from a mathematical point of view means that the measured cross section already represents an average over the incident-beam direction. For  $\mathbf{k}_0 \perp \mathbf{H}_0$  ( $q_x \cong 0$ ), this implies that  $d\Sigma_M/d\Omega \cong (d\Sigma_M/d\Omega)(q_y, q_z)$ , whereas  $d\Sigma_M/d\Omega \cong (d\Sigma_M/d\Omega)(q_x, q_y)$  for  $\mathbf{k}_0 \parallel \mathbf{H}_0$  ( $q_z \cong 0$ ) (compare Fig. 2). In §6.2 below, we will also study (for  $\mathbf{k}_0 \perp \mathbf{H}_0$ ) the case of anisotropic two-dimensional correlations by considering the following expression for  $c(y, z)$  (Šaroun, 2000):

$$c(y, z) = \int_{-\infty}^{+\infty} \int_{-\infty}^{+\infty} \frac{d\Sigma_M}{d\Omega}(q_y, q_z) \cos(q_y y + q_z z) dq_y dq_z \int_{-\infty}^{+\infty} \int_{-\infty}^{+\infty} \frac{d\Sigma_M}{d\Omega}(q_y, q_z) dq_y dq_z. \quad (37)$$

Because  $d\Sigma_M/d\Omega = (d\Sigma_M/d\Omega)(q_y, q_z)$ , the  $c(y, z)$  that is computed according to equation (37) represents a projection (average) of the three-dimensional correlation function  $c(x, y, z)$  along the direction of the incident neutron beam (Fritz-Popovski, 2013, 2015).

Equation (37) can be transformed into polar coordinates, which results in

$$c(r, \varphi) = \int_0^\infty \int_0^{2\pi} \frac{d\Sigma_M}{d\Omega}(q, \theta) \cos[qr \cos(\theta - \varphi)] q d\theta dq \int_0^\infty \int_0^{2\pi} \frac{d\Sigma_M}{d\Omega}(q, \theta) q d\theta dq, \quad (38)$$

where the angle  $\varphi$  specifies the orientation of  $\mathbf{r} = (r, \varphi)$  in the  $yz$  plane. By introducing the  $n$ th-order Bessel function (Watson, 1966),

$$J_n(z) = \frac{1}{2\pi} \int_0^{2\pi} \cos(n\alpha - z \sin \alpha) d\alpha = \frac{1}{2\pi} \int_\delta^{2\pi+\delta} \cos(n\alpha - z \sin \alpha) d\alpha, \quad (39)$$

where  $n$  is an integer and the last equation is valid for any angle  $\delta$ , we can obtain an average of  $c(r, \varphi)$  over all angles  $\varphi$  in the detector plane:

$$c(r) = \frac{1}{2\pi} \int_0^{2\pi} c(r, \varphi) d\varphi = \int_0^\infty \int_0^{2\pi} \frac{d\Sigma_M}{d\Omega}(q, \theta) J_0(qr) q d\theta dq \int_0^\infty \int_0^{2\pi} \frac{d\Sigma_M}{d\Omega}(q, \theta) q d\theta dq. \quad (40)$$

Since the integration with respect to the angle  $\theta$  can be taken analytically [compare arguments leading to equations (15) and (16)], it follows that

$$c(r) = \int_0^\infty \frac{d\Sigma_M}{d\Omega}(q) J_0(qr) q dq \int_0^\infty \frac{d\Sigma_M}{d\Omega}(q) q dq. \quad (41)$$

Equation (41) is called the averaged ‘two-dimensional’ correlation function of the spin-misalignment SANS cross section. Note that this expression differs from equation (36) which is obtained after three-dimensional integration of the  $\theta$ -averaged  $d\Sigma_M/d\Omega$ .

In Appendix A, we provide a comparison between the autocorrelation function of the spin misalignment,  $c_{SM}(r)$ , and the correlation functions of the spin-misalignment SANS cross sections, equations (36) and (41).

### 5. Models for $S_H$ and $S_M$

In order to solve equation (36) [or equation (41)], we have to specify certain models for the anisotropy-field scattering function  $S_H \propto h^2(q)$  [equation (7)] and for the scattering function of the longitudinal magnetization  $S_M \propto \tilde{M}_z^2(q)$  [equation (8)] in the expression for  $d\Sigma_M/d\Omega$ . As outlined in §2, we consider a statistically isotropic nearly saturated bulk ferromagnet which exhibits (weak) spatial fluctuations of the saturation magnetization and the magnetic anisotropy field. For such a system, the functions  $h^2$  and  $\tilde{M}_z^2$  depend only on the magnitude  $q$  of the momentum-transfer vector  $\mathbf{q}$ . Furthermore, we assume a monodisperse scattering system and that both functions  $h^2(q)$  and  $\tilde{M}_z^2(q)$  can be written as the product of the same single-particle form factor  $P(q)$  and structure factor  $S(q)$  (Pedersen, 1997), *i.e.*

$$h^2(q) = \frac{H_p^2}{(8\pi)^3} V_p^2 P(q) S(q) \quad (42)$$

and

$$\tilde{M}_z^2(q) = \frac{(\Delta M)^2}{(8\pi)^3} V_p^2 P(q) S(q), \quad (43)$$

where  $V_p$  is the particle volume. Later on in the calculations, we will use (for illustration purposes) the Percus–Yevick hard-sphere structure factor for  $S(q)$  (Kinning & Thomas, 1984) and (unless stated otherwise) the sphere form factor for  $P(q)$ ,

$$P(q) = 9 \frac{j_1^2(qR)}{(qR)^2}, \quad (44)$$

where  $j_1(x)$  denotes the spherical Bessel function of first order. Any other particle form factor or structure factor may be

straightforwardly implemented (see below). We also note that the characteristic structure sizes of  $h^2$  and  $\tilde{M}_z^2$  need not be identical; these are related, respectively, to the spatial extent of regions with uniform magnetic anisotropy field and saturation magnetization.

Under these assumptions (same size and shape),  $h^2(q)$  and  $\tilde{M}_z^2(q)$  differ only by constant prefactors, *i.e.* the magnitude  $H_p$  of the mean magnetic anisotropy field and the jump  $\Delta M$  of the magnitude of the magnetization at internal interfaces. In fact, it is the ratio of  $H_p/\Delta M$  which determines the angular anisotropy and the asymptotic power-law dependence of  $d\Sigma_M/d\Omega$  as well as the characteristic decay length of spin-misalignment fluctuations (Honecker & Michels, 2013).

In agreement with the assumption of a sharp interface in the nuclear (grain) microstructure (compare Fig. 1) both  $h^2(q)$  and  $\tilde{M}_z^2(q)$  vary asymptotically as  $q^{-4}$ . Together with the micro-magnetic response functions which, respectively, vary as  $R_H \propto q^{-4}$  and  $R_M \propto q^{-2}$  [compare equations (15) and (16), and see Fig. 3], this results in  $d\Sigma_M/d\Omega \propto q^{-n}$  with  $n$  ranging between 6 and 8 (Honecker & Michels, 2013). We emphasize that other models for the anisotropy-field microstructure may result in different power-law exponents of  $d\Sigma_M/d\Omega$ ; in particular, the  $h^2(q)$  that are related to the long-range stress fields of dislocations are expected to give rise to asymptotic power laws that are different from the Porod exponent (Seeger, 1959; Heuser, 1994; Thomson *et al.*, 1999; Maxelon *et al.*, 2001; Long & Levine, 2005). This is, however, the subject of further investigations.

By inserting equations (42) and (43) into the  $\theta$ -averaged spin-misalignment SANS cross sections [equations (19) and (23)], we can express the one-dimensional correlation functions of the spin-misalignment SANS cross section [equation (36)] as

$$c(r) = \left( \int_0^\infty \left\{ H_p^2 \frac{p^2}{4} \left[ 2 + \frac{1}{(1+p)^{1/2}} \right] + (\Delta M)^2 \frac{(1+p)^{1/2} - 1}{2} \right\} \times P(q)S(q)j_0(qr)q^2 dq \right) / \left( \int_0^\infty \left\{ H_p^2 \frac{p^2}{4} \left[ 2 + \frac{1}{(1+p)^{1/2}} \right] + (\Delta M)^2 \frac{(1+p)^{1/2} - 1}{2} \right\} \times P(q)S(q)q^2 dq \right) \quad (45)$$

for  $\mathbf{k}_0 \perp \mathbf{H}_0$  and

$$c(r) = \int_0^\infty p^2 P(q)S(q)j_0(qr)q^2 dq / \int_0^\infty p^2 P(q)S(q)q^2 dq \quad (46)$$

for  $\mathbf{k}_0 \parallel \mathbf{H}_0$ . Note that  $c(r)$  for the parallel geometry is [in contrast to  $c(r)$  for the perpendicular case] independent of both  $H_p$  and  $\Delta M$ ; the dependence of  $c(r)$  on the applied magnetic field  $H_i$  and on the magnetic interactions ( $A, M_s$ ) is contained in the function  $p(q, H_i)$  [compare equation (11)]. We also reemphasize that we have assumed that both Fourier coefficients  $h^2(q)$  and  $\tilde{M}_z^2(q)$  can be written as the product of

the same form factor  $P(q)$  and structure factor  $S(q)$ ; this assumption might be relaxed, *e.g.* when studying diffusion zones or core-shell-type nanoparticle structures with reduced surface magnetization (Heinemann *et al.*, 2000). The averaged two-dimensional correlation function [equation (41)] is obtained by making the corresponding replacements in equations (45) and (46).

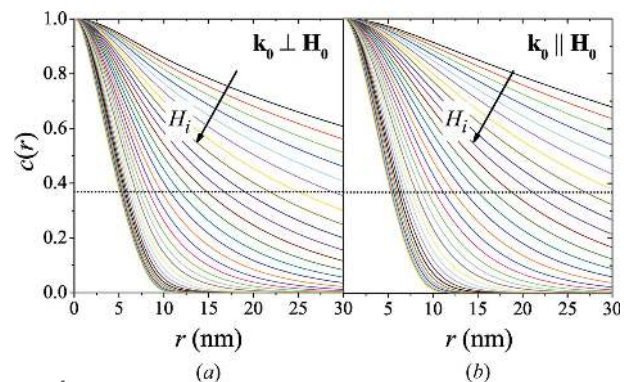
## 6. Results and discussion

The following materials parameters were used in the calculations: saturation magnetization  $\mu_0 M_s = 1.5 \text{ T}$ , exchange-stiffness constant  $A = 2.5 \times 10^{-11} \text{ J m}^{-1}$  and  $R = 5 \text{ nm}$  for the particle radius in the sphere form factor  $P(q)$  [equation (44)].

### 6.1. One-dimensional correlation functions

All results in this section are obtained by numerical integration of equations (45) and (46), which are based on the one-dimensional correlation function equation (36). In the first set of calculations, we concentrate on the dependence of the correlation functions on the applied magnetic field  $H_i$ , scattering geometry ( $\mathbf{k}_0 \perp \mathbf{H}_0$  and  $\mathbf{k}_0 \parallel \mathbf{H}_0$ ), ratio  $H_p/\Delta M$ , single-particle form factor  $P(q)$  and structure factor  $S(q)$ .

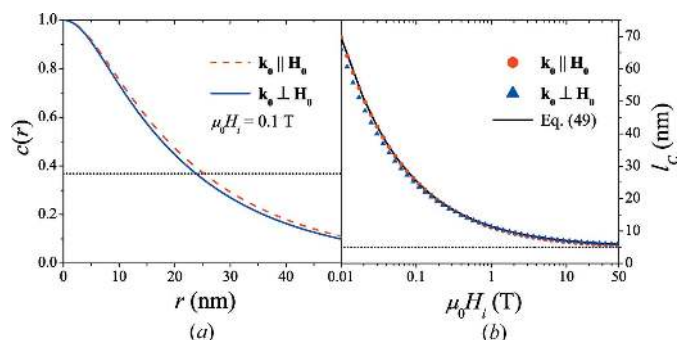
Fig. 4 displays the results for  $c(r)$  at several values of  $H_i$  and for both scattering geometries, assuming a dilute scattering system [ $S(q) = 1$ ] and  $H_p/\Delta M = 1$ . The dotted horizontal lines indicate the value of the correlation length  $l_C$  of the spin misalignment, which can be taken as a measure of the size of inhomogeneously magnetized regions around defects.  $l_C$  is defined as the  $\exp(-1)$  decay length, *i.e.*  $c(r = l_C) = \exp(-1)$ . Note, however, that this definition does not imply that the correlations decay exponentially. In fact, it is readily verified that the spin-misalignment correlations that are investigated in this study do not decay exponentially. We would also like to mention that an alternative route to extracting a spin-misalignment length may be realized by the computation of moments of the correlation function; for instance, for expo-



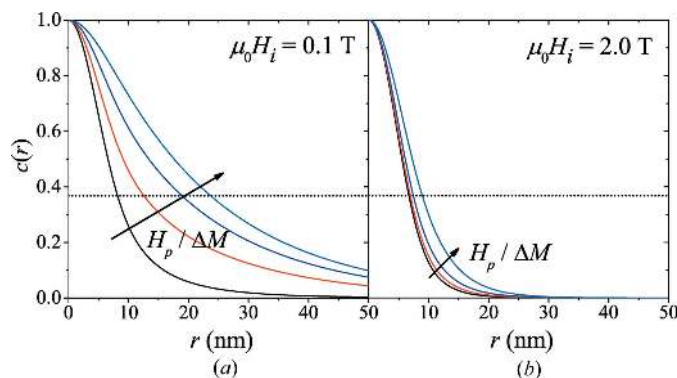
**Figure 4** Normalized correlation functions  $c(r)$  of the spin-misalignment SANS cross section at several applied-field values  $H_i$  for (a)  $\mathbf{k}_0 \perp \mathbf{H}_0$  and (b)  $\mathbf{k}_0 \parallel \mathbf{H}_0$ .  $H_i$  increases, respectively, from 0.01 to 100 T on a logarithmic scale, *i.e.*  $\mu_0 H_i^j = 10^{4j/j_{\max} - 2} \text{ T}$ , where  $j_{\max} = 30$  and  $j = 0, \dots, 30$  [ $S(q) = 1$ ;  $H_p/\Delta M = 1$ ]; the arrows specify the direction of increasing  $H_i$ . Dotted horizontal lines in (a) and (b):  $c(r) = \exp(-1)$ .

nentially decaying  $c(r)$  the above definition and  $l_C = \int_0^\infty c(r) dr$  are equivalent.

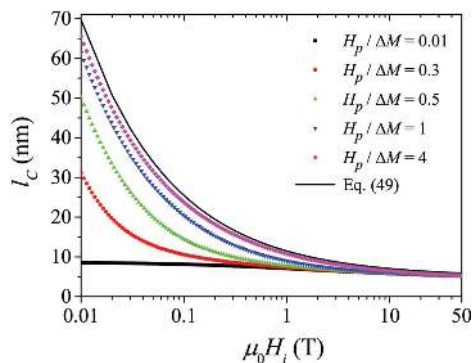
Increasing  $H_i$  results in both scattering geometries in the suppression of transverse spin-misalignment fluctuations and in a concomitant reduction of the  $c(r)$  and reduced  $l_C$  values.



**Figure 5** (a) Comparison of the  $c(r)$  for the two scattering geometries [ $\mu_0 H_i = 0.1$  T;  $S(q) = 1$ ;  $H_p/\Delta M \rightarrow \infty$ ]. Dotted horizontal line:  $c(r) = \exp(-1)$ . (b) Comparison of the field dependence of the spin-misalignment correlation length  $l_C$  for the two scattering geometries [ $S(q) = 1$ ;  $H_p/\Delta M \rightarrow \infty$ ] (log-linear scale). Solid line: equation (49). Dotted horizontal line:  $l_C = R = 5$  nm.



**Figure 6**  $c(r)$  for several values of the ratio  $H_p/\Delta M$  at (a)  $\mu_0 H_i = 0.1$  T and (b)  $\mu_0 H_i = 2.0$  T [ $\mathbf{k}_0 \perp \mathbf{H}_0$ ;  $S(q) = 1$ ].  $H_p/\Delta M$  values: 0.004, 0.4, 0.8, 4; the arrows specify the direction of increasing  $H_p/\Delta M$ ; for larger values of  $H_p/\Delta M$ ,  $c(r)$  remains effectively unchanged. Dotted horizontal lines in (a) and (b):  $c(r) = \exp(-1)$ .



**Figure 7** Field dependence of the spin-misalignment correlation length  $l_C$  for different values of  $H_p/\Delta M$  [ $\mathbf{k}_0 \perp \mathbf{H}_0$ ;  $S(q) = 1$ ] (log-linear scale). Solid line: equation (49).

At small fields,  $l_C$  may take on values of the order of 100 nm, which decrease to values of the order of the assumed particle size, here  $R = 5$  nm, for fields larger than a few tesla [see also dotted horizontal line in Fig. 5(b)]. For the chosen limiting case of  $H_p/\Delta M \rightarrow \infty$ , the difference between the  $c(r)$  and the  $l_C(H_i)$  in the two scattering geometries is only minor (see Fig. 5). However, noting that  $c(r)$  in the parallel geometry is independent of  $H_p/\Delta M$  and with reference to Figs. 6 and 7, we note that this difference increases with decreasing value of  $H_p/\Delta M$ .

Within the framework of our micromagnetic SANS theory of bulk ferromagnets (Honecker *et al.*, 2013; Metlov & Michels, 2015), the magnetic microstructure in real space,  $\mathbf{M}(\mathbf{r})$ , corresponds to a complicated convolution product between the magnetic anisotropy-field microstructure and micromagnetic functions. As a result, smoothly varying magnetization profiles are at the origin of the related spin-misalignment scattering. In agreement with the absence of a sharp interface in the magnetic microstructure (compare Fig. 1b), we note that the correlation functions of bulk ferromagnets enter the origin  $r = 0$  with zero slope (Bick *et al.*, 2013), so that

$$c(r) = 1 + kr^2 + \dots \quad (47)$$

for  $r \ll 1$  (where  $k$  is a constant). This observation may be compared to the well known result for nuclear particle scattering, where (for isolated uniform particles) the first derivative of  $c(r)$  evaluated at  $r = 0$  is related to the particle surface. In particular, for small  $r$ , the correlation function can be expanded as (Porod, 1982)

$$c(r) = 1 + ar + br^2 + cr^3 + \dots, \quad (48)$$

where the ‘differential’ parameters  $a, b, c$  are related to the size and shape of the particle; for example, for a uniform sphere one finds  $a = -3/(4R)$ ,  $b = 0$  and  $c = 1/(16R^3)$ .

The effect of the ratio  $H_p/\Delta M$  on the correlation functions and on the  $l_C$  values is shown in Figs. 6 and 7 [for  $\mathbf{k}_0 \perp \mathbf{H}_0$  and  $S(q) = 1$ ]. Perturbations in the spin microstructure that are dominated by fluctuations of the magnetic anisotropy field ( $H_p/\Delta M \gg 1$ ) decay on a larger length scale than magneto-statically dominated ( $H_p/\Delta M \ll 1$ ) perturbations.

For soft magnets (with low crystalline anisotropy), the following relation for  $l_C(H_i)$  has previously been suggested (Michels, 2014):

$$l_C(H_i) = R + l_H(H_i) = R + \left( \frac{2A}{\mu_0 M_s H_i} \right)^{1/2}. \quad (49)$$

Equation (49) provides an excellent description of the field-dependent correlations [solid lines in Figs. 5(b) and 7 with  $R = 5$  nm,  $A = 2.5 \times 10^{-11}$  J m<sup>-1</sup> and  $\mu_0 M_s = 1.5$  T]. At large fields, when the spin-misalignment SANS cross section is small and the exchange length  $l_H$  takes on values of a few nanometres,  $l_C$  reflects, irrespective of  $H_p/\Delta M$ , the size of the (in this case spherical) defect.

For the perpendicular scattering geometry, Fig. 8 displays (for  $\mu_0 H_i = 0.5$  T) the correlation function for different single-particle form factors  $P(q)$ , ignoring interparticle inter-



actions [ $S(q) = 1$ ]. In addition to the sphere form factor [equation (44)], we have used in the expressions for  $h^2(q)$  and  $M_z^2(q)$  the cylinder form factor (radius:  $R$ ; length:  $L$ ) (Pedersen, 1997),

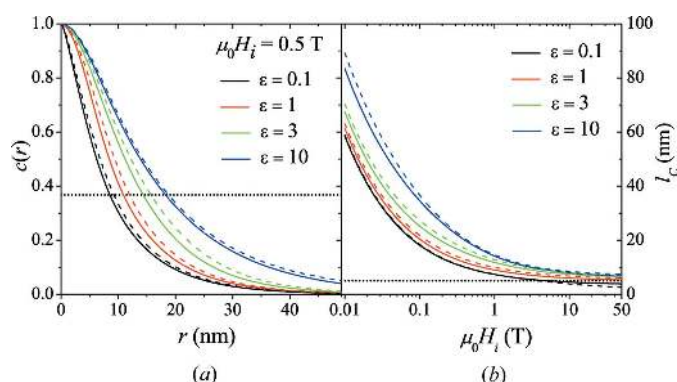
$$P(q) = \int_0^{\pi/2} \left[ \frac{2J_1(qR \sin \alpha)}{qR \sin \alpha} \frac{\sin(\frac{1}{2}qL \cos \alpha)}{\frac{1}{2}qL \cos \alpha} \right]^2 \sin \alpha \, d\alpha, \quad (50)$$

and the form factor of an ellipsoid of revolution (semi-axes:  $R$ ,  $R$ ,  $\varepsilon R$ ),

$$P(q) = \int_0^{\pi/2} 9 \left\{ \frac{j_1[qr(R, \varepsilon, \alpha)]}{qr(R, \varepsilon, \alpha)} \right\}^2 \sin \alpha \, d\alpha. \quad (51)$$

$J_1(x)$  denotes the first-order Bessel function,  $j_1(x)$  is the first-order spherical Bessel function and  $r(R, \varepsilon, \alpha) = R(\sin^2 \alpha + \varepsilon^2 \cos^2 \alpha)^{1/2}$ . Note that equation (51) reduces to the sphere form factor for  $\varepsilon = 1$ . Besides the cylinder and ellipsoid of revolution form factor we have also used other form factors (data not shown); the above form factors were chosen because they allow one to investigate different limiting cases (from thin circular discs to elongated spheroids and elongated thin rods). Examples for bulk magnetic materials with elongated cylindrically or elliptically shaped precipitates are alnico magnets (Zhou *et al.*, 2014), which are nanostructured alloys composed of Fe, Al, Ni and Co.

It is seen in Fig. 8 that for a given form factor the shape of the correlation function and the value of the correlation length depend (as expected) on the particle dimensions. Isotropically distributed cylinders (dashed lines) with a radius equal to the radius of the ellipsoid of revolution and a length  $L = 2\varepsilon R$  result in nearly the same (slightly larger) correlation functions as the ellipsoid of revolution.  $l_C$  at large fields appears to be related to the smallest dimension of the particle, although the precise dependency of  $l_C(H_i \rightarrow \infty)$  on the particle dimensions

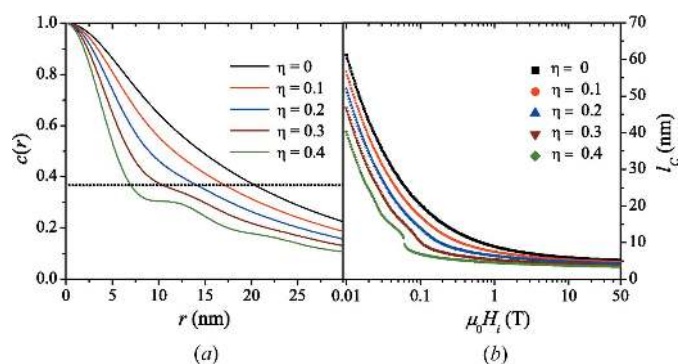


**Figure 8**  
Effect of particle form factor on the correlation function and correlation length. (a)  $c(r)$  at  $\mu_0 H_i = 0.5$  T and for several particle form factors. Solid lines: form factor of ellipsoid of revolution ( $R = 5$  nm) with  $\varepsilon$  decreasing from top to bottom ( $\varepsilon = 1$  corresponds to the sphere form factor). Dashed lines: cylinder form factor with  $R = 5$  nm and  $L = 2\varepsilon R$  [ $\mathbf{k}_0 \perp \mathbf{H}_0$ ;  $H_p/\Delta M = 1$ ;  $S(q) = 1$ ]. Dotted horizontal line:  $c(r) = \exp(-1)$ . (b) Corresponding  $l_C(H_i)$  (log-linear scale). Dotted horizontal line:  $l_C = R = 5$  nm.

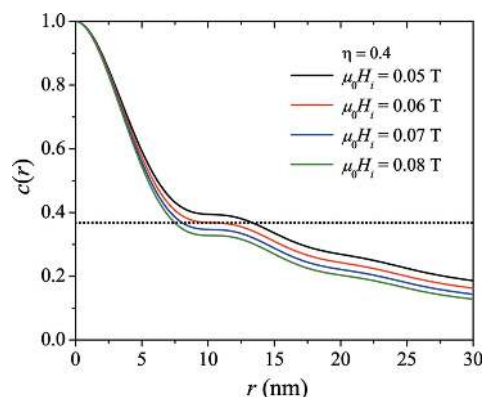
is not clear to us. Note also that for the case of very thin discs and oblate spheroids ( $\varepsilon \ll 1$ ) the correlation function still approaches the origin with zero slope (which becomes visible only for small  $r$ ).

Finally, Fig. 9 illustrates the effect of interparticle interactions on the correlation function (Fig. 9a) and correlation length (Fig. 9b). In order to model the effect of dense packing, we have used the Percus–Yevick hard-sphere structure factor for  $S(q)$  (Kinning & Thomas, 1984) in equations (45) and (46) and, as before, the sphere form factor for  $P(q)$ . Note also that the hard-sphere interaction radius  $R_{HS}$  in  $S(q)$  was set equal to the sphere radius  $R$ .

It is clearly seen that with increasing particle volume fraction  $\eta$  the range of the correlations decreases. However, the characteristic features of the structure factor only become visible at relatively large values of  $\eta$  (above about 20%), while at the lower end of  $\eta$  values both  $c(r)$  and  $l_C(H_i)$  are smoothly decaying functions. Furthermore, we note that with increasing  $\eta$ , *i.e.* with increasing interparticle interactions, we progressively introduce, in addition to the original (diffuse) spin-misalignment length  $l_C$ , a second structural correlation length into the system (compare *e.g.* the hump in  $l_C$  at around 50 mT for  $\eta = 0.4$ ).



**Figure 9**  
Effect of hard-sphere volume fraction  $\eta$  on the correlation function and correlation length. (a)  $c(r)$  at  $\mu_0 H_i = 0.1$  T and for several values of  $\eta$  increasing from top to bottom ( $\mathbf{k}_0 \perp \mathbf{H}_0$ ;  $H_p/\Delta M = 1$ ). Dotted horizontal line:  $c(r) = \exp(-1)$ . (b) Corresponding  $l_C(H_i)$  (log-linear scale).



**Figure 10**  
 $c(r)$  for  $\eta = 0.4$  and for several values of the applied magnetic field  $H_i$  increasing from top to bottom ( $\mathbf{k}_0 \perp \mathbf{H}_0$ ;  $H_p/\Delta M = 1$ ). Dotted horizontal line:  $c(r) = \exp(-1)$ .

The field dependence of this feature is depicted in Fig. 10, where we show  $c(r)$  for several  $H_i$  and for  $\eta = 0.4$ ; here, we see that slight changes in  $H_i$  result in relatively large jumps in  $l_C$  [ $l_C(0.08\text{ T}) = 7.7\text{ nm}$  and  $l_C(0.05\text{ T}) = 13.8\text{ nm}$ ]. This is an artifact which is clearly related to the strong structural correlations, and the determined correlation length now represents a field-dependent (unknown) average over the structural and the magnetic spin-misalignment correlation lengths. We note that by using other definitions for  $l_C$ , for instance in terms of some integral weight over  $c(r)$ , the position of the artifact on the  $H_i$  axis may be different but the effect of  $S(q)$  will still become visible.

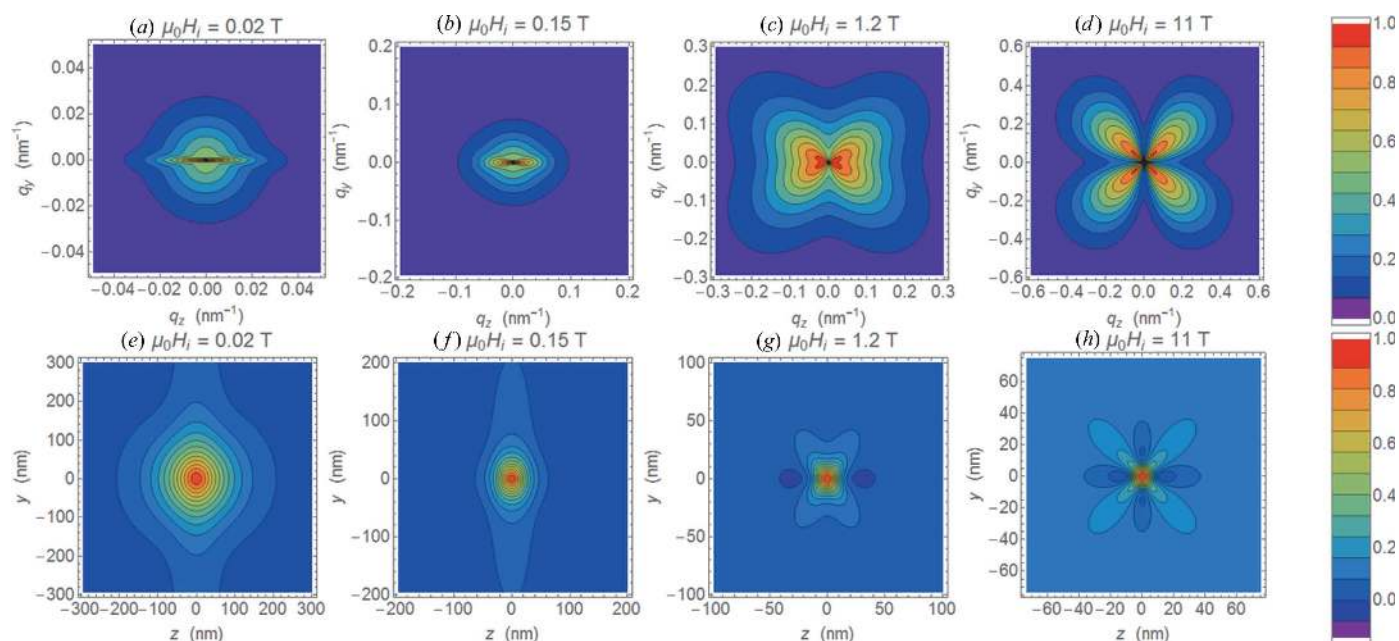
### 6.2. Two-dimensional correlation functions

Since the spin-misalignment SANS cross section is highly anisotropic for  $\mathbf{k}_0 \perp \mathbf{H}_0$ , the corresponding correlation function may also be anisotropic. We reemphasize that the angular  $\theta$  dependence of  $d\Sigma_M/d\Omega$  is a consequence of the trigonometric functions in the cross section (which are due to the dipolar neutron–magnetic interaction) and of the  $\theta$  dependence of the magnetization Fourier coefficients  $\tilde{M}_{x,y,z}(q, \theta)$  (which is due to the internal magnetostatic interaction) (Michels, 2014). Figs. 11(a)–11(d) show  $d\Sigma_M/d\Omega$  [equation (6)] at selected applied magnetic fields [and for  $S(q) = 1$ ]. The change in the angular anisotropy that becomes visible in Figs. 11(a)–11(d), from a spike-type anisotropy at low fields (a) to a clover-leaf-shaped anisotropy at large fields (d), is related to the field dependence of the Fourier coefficients and demonstrates that different terms in the response functions [equations (9) and (10)] dominate in different field regimes. For instance, the spike anisotropy (Fig. 11a) was recently

observed in an isotropic sintered Nd–Fe–B magnet (Pérido *et al.*, 2014); it is related to magnetostatic terms  $p \sin^2 \theta$  in the denominator of the response functions.

The corresponding two-dimensional correlation functions, computed according to equation (37), are displayed in Figs. 11(e)–11(h), where we plot the  $c(y, z)$  at the same fields as the  $d\Sigma_M/d\Omega$ . While the spin-misalignment SANS cross section at small fields (Figs. 11a and 11b) is enhanced parallel to the applied-field direction, the correlation function exhibits maxima in the direction perpendicular to the field; the range of the correlations extends to several hundreds of nanometres (Figs. 11e and 11f). Increasing the field results in the suppression of the correlations. At the largest field  $d\Sigma_M/d\Omega$  possesses a nearly fourfold anisotropy with maxima along the detector diagonals and minima along the horizontal and vertical axes (Fig. 11d), which translate into the corresponding extrema in  $c(y, z)$  (Fig. 11h).

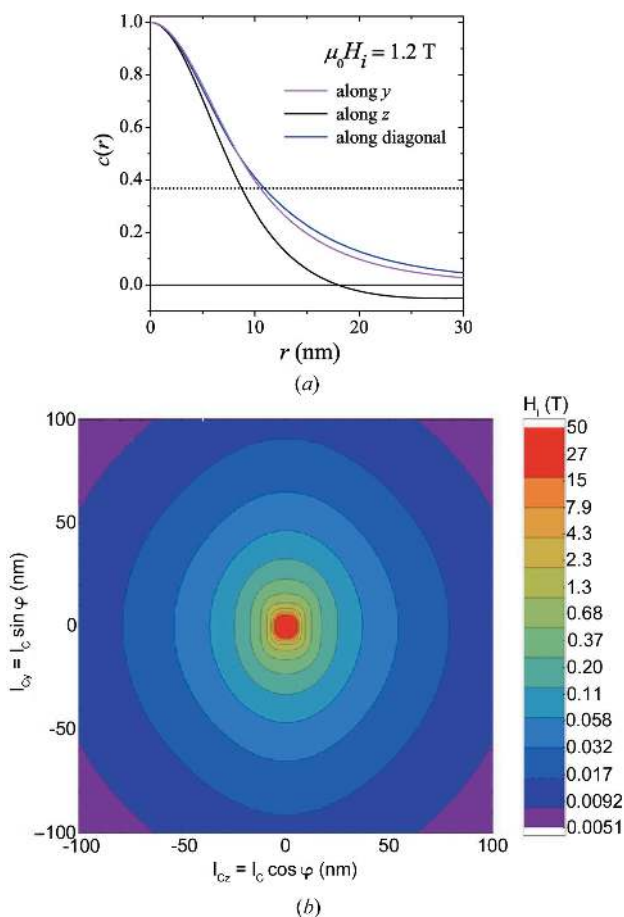
In Fig. 12(a), we depict the correlation function along different directions: while the correlation length at 1.2 T varies only relatively little with direction (from 8.8 to 10.9 nm), the functional dependencies of the  $c(y, z)$  are significantly different, with the correlation function along the horizontal  $z$  direction becoming negative at  $r \cong 18\text{ nm}$ ; the curves in Fig. 12(a) were obtained by solving equation (38) for  $\varphi = 0, \pi/4, \pi/2$ . In nuclear SANS, negative values of the distance distribution function  $p(r)$  are attributed to distances that connect regions with opposite sign of the scattering length density more frequently than regions with the same sign (Glatter & Kratky, 1982). However, for magnetic SANS, such an easily accessible interpretation of the correlation function  $c(r)$  of the spin-misalignment SANS cross section in terms of a specific magnetization distribution is not straightforward; this



**Figure 11** (a)–(d) Contour plots of normalized  $d\Sigma_M/d\Omega$  [equation (6)] at applied magnetic fields as indicated ( $\mathbf{k}_0 \perp \mathbf{H}_0$ ;  $H_p/\Delta M = 1$ ;  $\mathbf{H}_0$  is horizontal). For  $h^2(qR)$  and  $\tilde{M}_z^2(qR)$ , we used the form factor of a sphere with a radius of  $R = 5\text{ nm}$  [equation (44);  $S(q) = 1$ ]. (e)–(h) Corresponding two-dimensional correlation functions  $c(y, z)$ , which were computed according to equation (37) ( $H_p/\Delta M = 1$ ).

is mainly related to the (above mentioned) fact that  $c(r)$  does not directly represent the correlations in the magnetic microstructure (as does  $C_{SM}$ ), but also includes the magneto-dipolar interaction of the neutrons with the sample (*via* the trigonometric functions and the cross term in the cross section). The anisotropy of the correlations is further depicted in Fig. 12(b), where we show a contour plot for several values of  $H_i$ . This graph reveals a relatively weak anisotropy of  $l_C$ . At small fields, the correlations along the vertical ( $y$ ) direction decay on a larger length scale than along the horizontal ( $z$ ) direction; with increasing field, the anisotropy becomes less pronounced.

Fig. 13 compares (for  $\mathbf{k}_0 \perp \mathbf{H}_0$ ) the results for the one-dimensional [equation (36)] and the averaged two-dimensional [equation (41)] correlation functions of the spin-misalignment SANS. We recall that the former is obtained by three-dimensional integration of the azimuthally averaged  $d\Sigma_M/d\Omega = (d\Sigma_M/d\Omega)(q)$ , and the latter by two-dimensional integration of  $d\Sigma_M/d\Omega = (d\Sigma_M/d\Omega)(q, \theta)$  (compare §4). At small fields, the results for  $c(r)$  and  $l_C(H_i)$  differ considerably, whereas for  $\mu_0 H_i > 1$  T both equations yield almost the same correlation lengths.

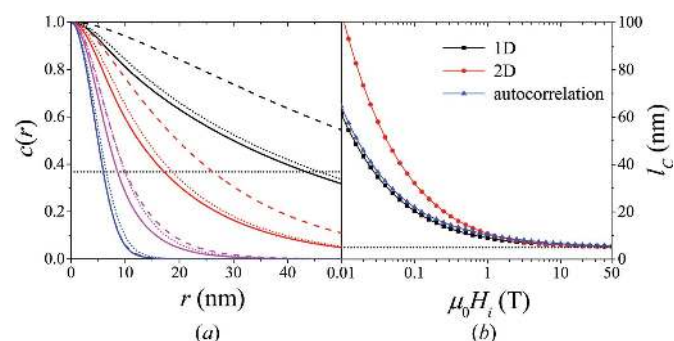


**Figure 12**  
(a)  $c(r)$  along different real-space directions [same parameters as in Fig. 11(g)]. Dotted horizontal line:  $c(r) = \exp(-1)$ . (b) Contour plot revealing the in-plane ( $\varphi$ ) variation of  $l_C$  for several values of the applied magnetic field  $H_i$ . Logarithmic color scale for the field is used.

The question may arise as to which one of these correlation functions should be used in order to analyze experimental data. From an experimental point of view, the averaged two-dimensional equation (41) reflects the data-analysis procedure, namely that the measured  $d\Sigma_M/d\Omega$  is a function of only two independent components of the scattering vector; in fact, elastic scattering in the small-angle approximation only probes correlations in the directions perpendicular to the incident beam. Reconstruction (from experimental  $d\Sigma_M/d\Omega$ ) of the one-dimensional  $c(r)$  (which is an orientation average of the three-dimensional correlation function) is always an extrapolation.

### 6.3. Comparison with experimental data

In order to test our magnetic SANS theory, we depict in Fig. 14 a comparison between experiment and theory; in particular, we have fitted equations (36) and (41) [using, in each case, equation (19) for  $d\Sigma_M/d\Omega$ ] to experimental data for the correlation function of the spin-misalignment SANS cross section of nanocrystalline Co and Ni (Michels *et al.*, 2003). These  $C(r)$  data have previously been analyzed by Michels & Bick (2013) using a simple approach based on the autocorrelation function of the spin misalignment, neglecting terms due to spatial fluctuations of the saturation magnetization. Such contributions are included in the present theory *via* the term  $S_M R_M$  in equation (19). The nanocrystalline Co and Ni samples constitute fully dense polycrystalline metals with average crystallite sizes of  $D = 10$  nm (Co) and  $D = 49$  nm (Ni) (Weissmüller *et al.*, 2001). The experimental SANS data of both samples were recorded between  $q_{\min} \cong 0.01$  nm<sup>-1</sup> and  $q_{\max} \cong 1.0$  nm<sup>-1</sup>. The correlation functions were then obtained by direct Fourier transformation according to equation (36), so that this expression should actually also be used for the data analysis. Nevertheless, we have also employed the two-dimensional equation (41) for fitting the experimental  $C(r)$  data, which is motivated by the fact that for



**Figure 13**  
(a) Comparison between the one-dimensional [equation (36); solid lines] and the averaged two-dimensional [equation (41); dashed lines] correlation functions of the spin-misalignment SANS cross section and the autocorrelation function of the spin misalignment (dotted lines, see Appendix A) [ $\mathbf{k}_0 \perp \mathbf{H}_0$ ;  $H_p/\Delta M = 1$ ;  $S(q) = 1$ ].  $c(r)$  at selected  $H_i$ ; values of  $H_i$  (in T) increasing from top to bottom: 0.02, 0.15, 1.2, 11. Dotted horizontal line:  $c(r) = \exp(-1)$ . (b) Corresponding  $l_C(H_i)$  (log-linear scale) (solid lines are guides to the eyes). Dotted horizontal line:  $l_C = R = 5$  nm.

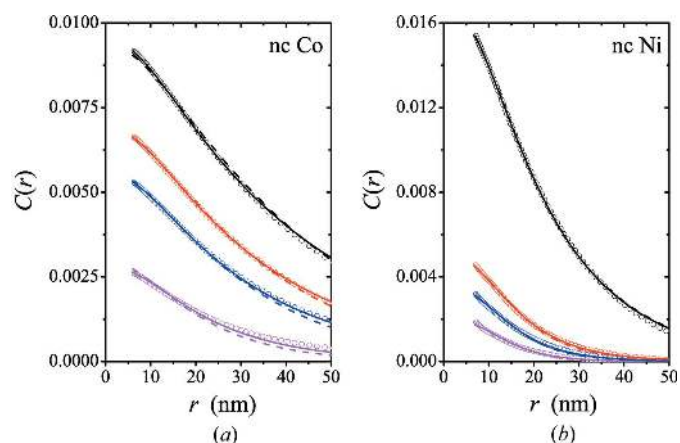
**Table 1**

Results for the global fit parameters  $A$ ,  $H_p/\Delta M$  and  $R$  obtained by fitting equations (36) and (41) to the correlation functions of nanocrystalline Co and Ni displayed in Fig. 14.

	Co [equation (36)]	Co [equation (41)]	Ni [equation (36)]	Ni [equation (41)]
$A$ (pJ m <sup>-1</sup> )	54.6 (6)	29.1 (6)	15.1 (1)	13.7 (4)
$H_p/\Delta M$	13.4 (0)	4.0 (1)	5.6 (0)	0.5 (1)
$R$ (nm)	10.2 (1)	8.2 (6)	9.9 (1)	13.0 (1)

larger applied fields the difference between the two correlation functions is only minor (compare Fig. 13). In the following discussion, one should therefore keep in mind that for the analysis of this particular  $C(r)$  data set equation (36) represents the proper theoretical model.

In the fitting procedure, the integrals in equations (36) and (41) were approximated by discrete sums, where the upper integration limit of ‘∞’ was taken as  $q_{max} \cong 5\text{--}10\text{ nm}^{-1}$  and the typical  $q$  resolution was set to  $\Delta q \cong 0.01\text{--}0.02\text{ nm}^{-1}$ . The resulting expressions were fitted by means of a nonlinear (Levenberg–Marquardt) fitting routine to the experimental  $C(r)$  data. We have treated the exchange-stiffness constant  $A$ , the ratio  $H_p/\Delta M$  and  $R$  as global fit parameters. Since we work with unnormalized  $C(r)$  data, we have introduced field-dependent local scaling constants  $K_1, K_2, K_3$  and  $K_4$  (one for each data set);  $M_s = 1434\text{ kA m}^{-1}$  for Co and  $M_s = 522\text{ kA m}^{-1}$  for Ni were held constant. Since the experimental SANS data [e.g. Fig. 1 of Michels *et al.* (2003)] do not give a visible indication of a strong impact of dense packing, we have for simplicity decided to set  $S = 1$ . The results for the global fit parameters are summarized in Table 1. The data analysis was restricted to  $r$  values below about 50 nm and to fields larger than 50 mT, where the magnetization of both samples approaches saturation (Weissmüller *et al.*, 2001).



**Figure 14** Comparison between experimental and theoretical data. (Open circles) Correlation functions of the spin-misalignment SANS cross section of (a) nanocrystalline Co and (b) nanocrystalline Ni with average crystallite sizes of  $D = 10\text{ nm}$  (Co) and  $D = 49\text{ nm}$  (Ni) (Weissmüller *et al.*, 2001).  $C(r)$  data are taken from Michels *et al.* (2003). Solid lines: fit based on equation (36); dashed lines: fit based on equation (41). Values of the internal magnetic field  $H_i$  (in mT) from top to bottom, respectively: (a) 54, 80, 107, 243; (b) 190, 570, 800, 1240. In both analyses, we have used the sphere form factor for  $P(q)$  and  $S(q) = 1$ .

As is seen in Fig. 14 (solid and dashed lines), both equations provide a reasonable global description of the field-dependent correlations. The obtained values for the anisotropy-field radii  $R$  of both materials are in the range 8–13 nm, slightly smaller than the ones estimated previously (Michels & Bick, 2013). The parameter  $R$  characterizes the length scale over which the magnetic anisotropy field  $\mathbf{H}_p(\mathbf{r})$  is uniform; for single-crystal grains,  $R$  is sensibly related to the average crystallite size (compare Fig. 1a). Therefore, the finding  $R \cong 8\text{--}10\text{ nm}$  for Co suggests that the magnetic anisotropy field is approximately homogeneous on a length scale of the order of the average grain size of 10 nm, whereas for Ni nonuniformities in  $\mathbf{H}_p(\mathbf{r})$  exist on a scale smaller than the average crystallite size of 49 nm, presumably related to twin faults or to the defect cores of grain boundaries (Michels *et al.*, 2003). While the obtained values for the exchange-stiffness constant of Ni (using both equations) are larger by a factor of about two than the ones reported in the literature (Kronmüller & Fähnle, 2003), the  $A$  value for Co using equation (41) agrees excellently with literature data and with the result of our previous SANS data analysis (in Fourier space) (Michels *et al.*, 2003). Values for the ratio of  $H_p/\Delta M$  have not been determined previously for these materials, but our results suggest [except for the case of Ni using equation (41)] that perturbations in the spin microstructure due to spatially fluctuating magnetic anisotropy fields dominate over magnetostatic fluctuations. This might be expected, since in single-phase ferromagnets variations in  $M_s$  are relatively small, compared to e.g. nanocomposites (Michels *et al.*, 2006). Overall, the good agreement between experiment and theory suggests that equation (36) may be used for the analysis of real-space correlations of bulk magnetic materials; equation (41) may also be employed for the analysis of experimental data, provided that the original  $d\Sigma_M/d\Omega$  has been Fourier transformed according to equation (41).

### 7. Summary and conclusion

On the basis of a recent micromagnetic theory for the magnetic SANS cross section of inhomogeneous bulk ferromagnets, we have studied the corresponding magnetic field-dependent spin-misalignment correlations in real space. The correlation function  $c(r)$  of the spin-misalignment SANS cross section depends on the applied magnetic field and, for  $\mathbf{k}_0 \perp \mathbf{H}_0$ , on the ratio of magnetic anisotropy field strength  $H_p$  to magnetization jump  $\Delta M$  at internal interfaces. Additional degrees of freedom in  $c(r)$  relate to the particle (anisotropy-field) form factor or to the inclusion of interparticle correlations *via* a structure factor. The result for  $c(r)$  (for  $\mathbf{k}_0 \perp \mathbf{H}_0$ ) [equation (45)] demonstrates a strong impact of  $H_p/\Delta M$  on the shape and range of the correlations: magnetostatically dominated correlations ( $H_p/\Delta M \ll 1$ ) decay on a rather short length scale, whereas anisotropy-field-dominated correlations ( $H_p/\Delta M \gg 1$ ) are characterized by a long-range decay, which is reasonably described by equation (49). The difference between the correlation functions in the two scattering geometries ( $\mathbf{k}_0 \perp \mathbf{H}_0$  and  $\mathbf{k}_0 \parallel \mathbf{H}_0$ ) increases with decreasing

ratio of  $H_p/\Delta M$ . The correlation functions do not decay exponentially and approach the origin with zero slope; as far as equation (36) is concerned, this is consistent with the absence of a sharp interface in the magnetic microstructure. Experimental data for the correlation function of the spin-misalignment SANS cross section of nanocrystalline Co and Ni have been successfully analyzed using the here presented theoretical expressions. It would also be of interest to employ the present approach for studying long-range magnetic correlations, as accessible on a USANS instrument (Jericha *et al.*, 2013), or the magnetic microstructure of state-of-the-art nanocrystalline NdFeB-based permanent magnets (Bick *et al.*, 2013; Yano *et al.*, 2014; Périgo *et al.*, 2015; Saito *et al.*, 2015).

## APPENDIX A

### Autocorrelation function of the spin misalignment

In the high-field limit and for a general orientation of the wavevector  $\mathbf{q} = (q_x, q_y, q_z)$ , the solution, in Fourier space, of the linearized balance-of-torques equation (1) can be written as (Honecker & Michels, 2013)

$$\begin{aligned} \tilde{M}_x(\mathbf{q}) = M_s & \left[ \left( h_x - \tilde{M}_z \frac{q_x q_z}{q^2} \right) \left( H_{\text{eff}} + M_s \frac{q_y^2}{q^2} \right) \right. \\ & \left. - M_s \frac{q_x q_y}{q^2} \left( h_y - \tilde{M}_z \frac{q_y q_z}{q^2} \right) \right] \\ & \left/ \left[ H_{\text{eff}} \left( H_{\text{eff}} + M_s \frac{q_x^2 + q_y^2}{q^2} \right) \right], \right. \quad (52) \end{aligned}$$

$$\begin{aligned} \tilde{M}_y(\mathbf{q}) = M_s & \left[ \left( h_y - \tilde{M}_z \frac{q_y q_z}{q^2} \right) \left( H_{\text{eff}} + M_s \frac{q_x^2}{q^2} \right) \right. \\ & \left. - M_s \frac{q_x q_y}{q^2} \left( h_x - \tilde{M}_z \frac{q_x q_z}{q^2} \right) \right] \\ & \left/ \left[ H_{\text{eff}} \left( H_{\text{eff}} + M_s \frac{q_x^2 + q_y^2}{q^2} \right) \right]. \right. \quad (53) \end{aligned}$$

For  $q_x = 0$  or  $q_z = 0$ , one obtains the expressions for  $\tilde{M}_x$  and  $\tilde{M}_y$ , respectively, which enter the equations for the perpendicular or the parallel SANS cross sections [equations (3) and (20)]. Averaging the expression for  $|\tilde{M}_x(\mathbf{q})|^2 + |\tilde{M}_y(\mathbf{q})|^2$  over the orientation (angle  $\beta$ ) of the magnetic anisotropy-field Fourier coefficient,

$$\begin{aligned} \mathbf{h}(\mathbf{q}) &= [h_x(\mathbf{q}), h_y(\mathbf{q}), 0] \\ &= [h(\mathbf{q}) \cos \beta, h(\mathbf{q}) \sin \beta, 0], \quad (54) \end{aligned}$$

results in

$$\begin{aligned} f(q, \theta') &= \frac{1}{2\pi} \int_0^{2\pi} [|\tilde{M}_x(\mathbf{q})|^2 + |\tilde{M}_y(\mathbf{q})|^2] d\beta \\ &= \frac{h^2 p^2 (1 + p \sin^2 \theta' + \frac{1}{2} p^2 \sin^4 \theta') + \tilde{M}_z^2 p^2 \sin^2 \theta' \cos^2 \theta'}{(1 + p \sin^2 \theta')^2}, \quad (55) \end{aligned}$$

where  $\mathbf{q} = q(\sin \theta' \cos \phi', \sin \theta' \sin \phi', \cos \theta')$  and  $p = p(q, H_i)$  is given by equation (11). Inserting this function into the normalized version of equation (33) allows us to obtain the autocorrelation function of the spin misalignment,  $c_{\text{SM}}(r)$ , by three-dimensional integration. Fig. 13 displays  $c_{\text{SM}}(r)$  and  $l_C(H_i)$  and compares the results with the correlation functions of the spin-misalignment SANS cross section, equations (36) and (41).

### Acknowledgements

We thank the National Research Fund of Luxembourg for financial support (CORE/INTER project No. INTER/DFG/12/07 and ATTRACT project No. FNR/A09/01). Critical reading of the manuscript by Élio Périgo, Dirk Honecker, Sergey Erokhin and Konstantin Metlov is gratefully acknowledged.

### References

- Alinger, M. J., Odette, G. R. & Hoelzer, D. T. (2009). *Acta Mater.* **57**, 392–406.
- Bergner, F., Pareige, C., Kuksenkov, V., Malerba, L., Pareige, P., Ulbricht, A. & Wagner, A. (2013). *J. Nucl. Mater.* **442**, 463–469.
- Bick, J.-P., Honecker, D., Döbrich, F., Suzuki, K., Gilbert, E. P., Frielinghaus, H., Kohlbrecher, J., Gavilano, J., Forgan, E. M., Schweins, R., Lindner, P., Birringer, R. & Michels, A. (2013). *Appl. Phys. Lett.* **102**, 022415.
- Bischof, M., Staron, P., Michels, A., Granitzer, P., Rumpf, K., Leitner, H., Scheu, C. & Clemens, H. (2007). *Acta Mater.* **55**, 2637–2646.
- Brown, W. F. Jr (1963). *Micromagnetics*. New York: Interscience Publishers.
- Coppola, R., Kampmann, R., Magnani, M. & Staron, P. (1998). *Acta Mater.* **46**, 5447–5456.
- Döbrich, F., Kohlbrecher, J., Sharp, M., Eckerlebe, H., Birringer, R. & Michels, A. (2012). *Phys. Rev. B*, **85**, 094411.
- Erokhin, S., Berkov, D., Gorn, N. & Michels, A. (2012). *Phys. Rev. B*, **85**, 024410.
- Feigin, L. A. & Svergun, D. I. (1987). *Structure Analysis by Small-Angle X-ray and Neutron Scattering*. New York: Plenum Press.
- Frandsen, B., Yang, X. & Billinge, S. J. L. (2014). *Acta Cryst.* **A70**, 3–11.
- Fritz, G. & Glatter, O. (2006). *J. Phys. Condens. Matter*, **18**, S2403.
- Fritz-Popovski, G. (2013). *J. Appl. Cryst.* **46**, 1447–1454.
- Fritz-Popovski, G. (2015). *J. Appl. Cryst.* **48**, 44–51.
- Glatter, O. (1977). *J. Appl. Cryst.* **10**, 415–421.
- Glatter, O. & Kratky, O. (1982). *Small Angle X-ray Scattering*. London: Academic Press.
- Guinier, A. & Fournet, G. (1955). *Small-Angle Scattering of X-rays*. New York: Wiley.
- Hansen, S. (2000). *J. Appl. Cryst.* **33**, 1415–1421.
- Hansen, S. (2012). *Estimation of Distribution Functions from Small-Angle Scattering Data*, <http://www.bayesapp.org/>.
- Heinemann, A., Hermann, H., Wiedenmann, A., Mattern, N. & Wetzig, K. (2000). *J. Appl. Cryst.* **33**, 1386–1392.
- Heuser, B. J. (1994). *J. Appl. Cryst.* **27**, 1020–1029.
- Honecker, D., Dewhurst, C. D., Suzuki, K., Erokhin, S. & Michels, A. (2013). *Phys. Rev. B*, **88**, 094428.
- Honecker, D., Ferdinand, A., Döbrich, F., Dewhurst, C. D., Wiedenmann, A., Gómez-Polo, C., Suzuki, K. & Michels, A. (2010). *Eur. Phys. J. B*, **76**, 209–213.
- Honecker, D. & Michels, A. (2013). *Phys. Rev. B*, **87**, 224426.
- Jericha, E., Badurek, G. & Gösselsberger, C. (2013). *Phys. Proc.* **42**, 58–65.

- Kinning, D. J. & Thomas, E. L. (1984). *Macromolecules*, **17**, 1712–1718.
- Kronmüller, H. & Fähnle, M. (2003). *Micromagnetism and the Microstructure of Ferromagnetic Solids*. Cambridge University Press.
- Lembke, U., Hoell, A., Kranold, R., Müller, R., Schüppel, W., Goerigk, G., Gilles, R. & Wiedenmann, A. (1999). *J. Appl. Phys.* **85**, 2279–2286.
- Löffler, J. F., Braun, H. B., Wagner, W., Kostorz, G. & Wiedenmann, A. (2005). *Phys. Rev. B*, **71**, 134410.
- Long, G. G. & Levine, L. E. (2005). *Acta Cryst.* **A61**, 557–567.
- Maxelon, M., Pundt, A., Pyckhout-Hintzen, W., Barker, J. & Kirchheim, R. (2001). *Acta Mater.* **49**, 2625–2634.
- Metlov, K. L. & Michels, A. (2015). *Phys. Rev. B*, **91**, 054404.
- Michaud, P., Delagnes, D., Lamesle, P., Mathon, M. H. & Levailant, C. (2007). *Acta Mater.* **55**, 4877–4889.
- Michels, A. (2010). *Phys. Rev. B*, **82**, 024433.
- Michels, A. (2014). *J. Phys. Condens. Matter*, **26**, 383201.
- Michels, A. & Bick, J.-P. (2013). *J. Appl. Cryst.* **46**, 788–790.
- Michels, A., Döbrich, F., Elmas, M., Ferdinand, A., Markmann, J., Sharp, M., Eckerlebe, H., Kohlbrecher, J. & Birringer, R. (2008). *EPL*, **81**, 66003.
- Michels, A., Elmas, M., Döbrich, F., Ames, M., Markmann, J., Sharp, M., Eckerlebe, H., Kohlbrecher, J. & Birringer, R. (2009). *EPL*, **85**, 47003.
- Michels, A., Erokhin, S., Berkov, D. & Gorn, N. (2014). *J. Magn. Mater.* **350**, 55–68.
- Michels, A., Vecchini, C., Moze, O., Suzuki, K., Pranzas, P. K., Kohlbrecher, J. & Weissmüller, J. (2006). *Phys. Rev. B*, **74**, 134407.
- Michels, A., Viswanath, R. N., Barker, J. G., Birringer, R. & Weissmüller, J. (2003). *Phys. Rev. Lett.* **91**, 267204.
- Mortensen, K. & Pedersen, J. S. (1993). *Macromolecules*, **26**, 805–812.
- Ohnuma, M., Hono, K., Linderroth, S., Pedersen, J. S., Yoshizawa, Y. & Onodera, H. (2000). *Acta Mater.* **48**, 4783–4790.
- Pedersen, J. S. (1997). *Adv. Colloid Interface Sci.* **70**, 171–210.
- Pérido, E. A., Gilbert, E. P., Metlov, K. L. & Michels, A. (2014). *New. J. Phys.* **16**, 123031.
- Pérido, E. A., Gilbert, E. P. & Michels, A. (2015). *Acta Mater.* **87**, 142–149.
- Porod, G. (1982). *Small Angle X-ray Scattering*, edited by O. Glatter & O. Kratky, pp. 17–51. London: Academic Press.
- Saito, K., Ueno, T., Yano, M., Harada, M., Shoji, T., Sakuma, N., Manabe, A., Kato, A., Keiderling, U. & Ono, K. (2015). *J. Appl. Phys.* **117**, 17B302.
- Šaroun, J. (2000). *J. Appl. Cryst.* **33**, 824–828.
- Seeger, A. K. (1959). *J. Appl. Phys.* **30**, 629–637.
- Svergun, D. I. & Koch, M. H. J. (2003). *Rep. Prog. Phys.* **66**, 1735–1782.
- Thomson, R., Levine, L. E. & Long, G. G. (1999). *Acta Cryst.* **A55**, 433–447.
- Watson, G. N. (1966). *A Treatise on the Theory of Bessel Functions*, 2nd ed. Cambridge University Press.
- Weissmüller, J., McMichael, R. D., Michels, A. & Shull, R. D. (1999). *J. Res. Natl. Inst. Stand. Technol.* **104**, 261–275.
- Weissmüller, J., Michels, A., Barker, J. G., Wiedenmann, A., Erb, U. & Shull, R. D. (2001). *Phys. Rev. B*, **63**, 214414.
- Weissmüller, J., Michels, A., Michels, D., Wiedenmann, A., Krill, C. E. III, Sauer, H. M. & Birringer, R. (2004). *Phys. Rev. B*, **69**, 054402.
- Yano, M., Ono, K., Harada, M., Manabe, A., Shoji, T., Kato, A. & Kohlbrecher, J. (2014). *J. Appl. Phys.* **115**, 17A730.
- Zhou, L., Miller, M., Lu, P., Ke, L., Skomski, R., Dillon, H., Xing, Q., Palasyuk, A., McCartney, M., Smith, D., Constantinides, S., McCallum, R., Anderson, I., Antropov, V. & Kramer, M. (2014). *Acta Mater.* **74**, 224–233.