

Brief Communication
Infectious Diseases,
Microbiology & Parasitology



Social Distancing against COVID-19: Implication for the Control of Influenza

Ji Yun Noh ^{1,2}, Hye Seong ¹, Jin Gu Yoon ¹, Joon Young Song ^{1,2},
Hee Jin Cheong ^{1,2} and Woo Joo Kim ^{1,2}

¹Division of Infectious Diseases, Department of Internal Medicine, Korea University College of Medicine, Seoul, Korea

²Asia Pacific Influenza Institute, Korea University College of Medicine, Seoul, Korea



Received: May 4, 2020

Accepted: May 7, 2020

Address for Correspondence:

Hee Jin Cheong, MD, PhD

Division of Infectious Diseases, Department of Internal Medicine, Korea University Guro Hospital, Korea University College of Medicine, 148 Gurodong-ro, Guro-gu, Seoul 08308, Korea.

E-mail: heejinmd@korea.ac.kr

© 2020 The Korean Academy of Medical Sciences.

This is an Open Access article distributed under the terms of the Creative Commons Attribution Non-Commercial License (<https://creativecommons.org/licenses/by-nc/4.0/>) which permits unrestricted non-commercial use, distribution, and reproduction in any medium, provided the original work is properly cited.


ORCID iDs

Ji Yun Noh 


<https://orcid.org/0000-0001-8541-5704>

Hye Seong 

<https://orcid.org/0000-0002-5633-7214>

Jin Gu Yoon 


<https://orcid.org/0000-0003-3283-1880>

Joon Young Song 

<https://orcid.org/0000-0002-0148-7194>

Hee Jin Cheong 

<https://orcid.org/0000-0002-2532-1463>

Woo Joo Kim 

<https://orcid.org/0000-0002-4546-3880>

Disclosure

The authors have no potential conflicts of interest to disclose.

<https://jkms.org>

ABSTRACT

Social distancing has been adopted as one of basic protective measures against coronavirus disease 2019 (COVID-19). During 2019–2020 season, influenza epidemic period was exceptionally short and epidemic peak was low in comparison with previous seasons in Korea. Influenza epidemic pattern was bimodal in 2016–2017 and 2018–2019 seasons, however, influenza viruses have rarely been circulating in spring, 2020 in Korea. Although multiple factors could affect the size of influenza epidemic, extensive application of nonpharmaceutical interventions including mask wearing and social distancing in response to COVID-19 seems to be a major factor of reduced influenza epidemic. Social distancing measures with high feasibility and high acceptability should be implemented even if severe acute respiratory syndrome coronavirus 2 (SARS-CoV-2) vaccines are developed in the future. Establishment of guideline for workplace social distancing is needed and it would contribute to reduce disease burden of influenza, especially in vaccine mismatch year.

Keywords: Social Distancing; Coronavirus Disease 2019; Influenza

Coping with coronavirus disease 2019 (COVID-19), social distancing has been adopted as one of basic protective measures against severe acute respiratory syndrome coronavirus 2 (SARS-CoV-2). Nonpharmaceutical interventions (NPIs) include actions to mitigate the spread of respiratory viruses: personal protective measures such as hand hygiene, cough etiquette, and voluntary home stay of ill persons; community measures such as school closures, social distancing in workplace, and avoidance of mass gathering.¹

High viral loads of SARS-CoV-2 in upper respiratory tract of human and transmission potential in asymptomatic patients with COVID-19 emphasize the application of NPIs to control of SARS-CoV-2 transmission especially in situation of lack of vaccine and therapeutics.^{2,3} Previous study showed that SARS-CoV-2 viral load of upper respiratory tract in the asymptomatic patient was similar to those in the symptomatic patients.⁴

During 2019–2020 season, influenza epidemic period was exceptionally short and epidemic peak was low in comparison with previous seasons in Korea (Fig. 1 and Table 1). Official

Author Contributions

Conceptualization: Cheong HJ. Investigation: Noh JY, Cheong HJ. Writing - original draft: Noh JY, Cheong HJ. Writing - review & editing: Noh JY, Seong H, Yoon JG, Song JY, Kim WJ, Cheong HJ.

Table 1. Current influenza epidemic in Korea by Korea Centers for Disease Control and Prevention^{5,11-14}

Season	Criteria for influenza epidemic ^a	Period	Duration	Circulating influenza viruses
2019–2020	5.9	15 Nov 2019–27 Mar 2020	19 wk 1 day	A(H1N1)pdm09, 70.6% A(H3N2), 25.4% ^b
2018–2019	6.3	16 Nov 2018–21 Jun 2019	31 wk 1 day	A(H1N1)pdm09, 41.9% B, 37.2%
2017–2018	6.6	1 Dec 2017–25 May 2018	25 wk 1 day	B, 54.7% A(H3N2), 38.3%
2016–2017	8.9	8 Dec 2016–2 Jun 2017	25 wk 2 day	A(H3N2), 72.9% B, 26.6%

ILI = influenza-like illness.

^aNo. of ILI patients/1,000 outpatients; ^bData from 1 Sep 2019 to 18 Apr 2020.

influenza epidemic period by Korea Centers for Disease Control and Prevention (KCDC) was from 15 November 2019 to 27 March 2020, which is 6–12 weeks shorter than those of previous seasons.⁵ Influenza epidemic pattern was bimodal in 2016–2017 and 2018–2019 seasons, however, influenza viruses have rarely been circulating in spring, 2020.

Extent and duration of influenza epidemic vary from year to year. Multiple factors such as characteristics of circulating influenza viruses, immunity of the population, and transmissibility of viruses could affect the size of influenza epidemic. Reduced health-care-seeking behaviors of the population under COVID-19 pandemic could affect short duration

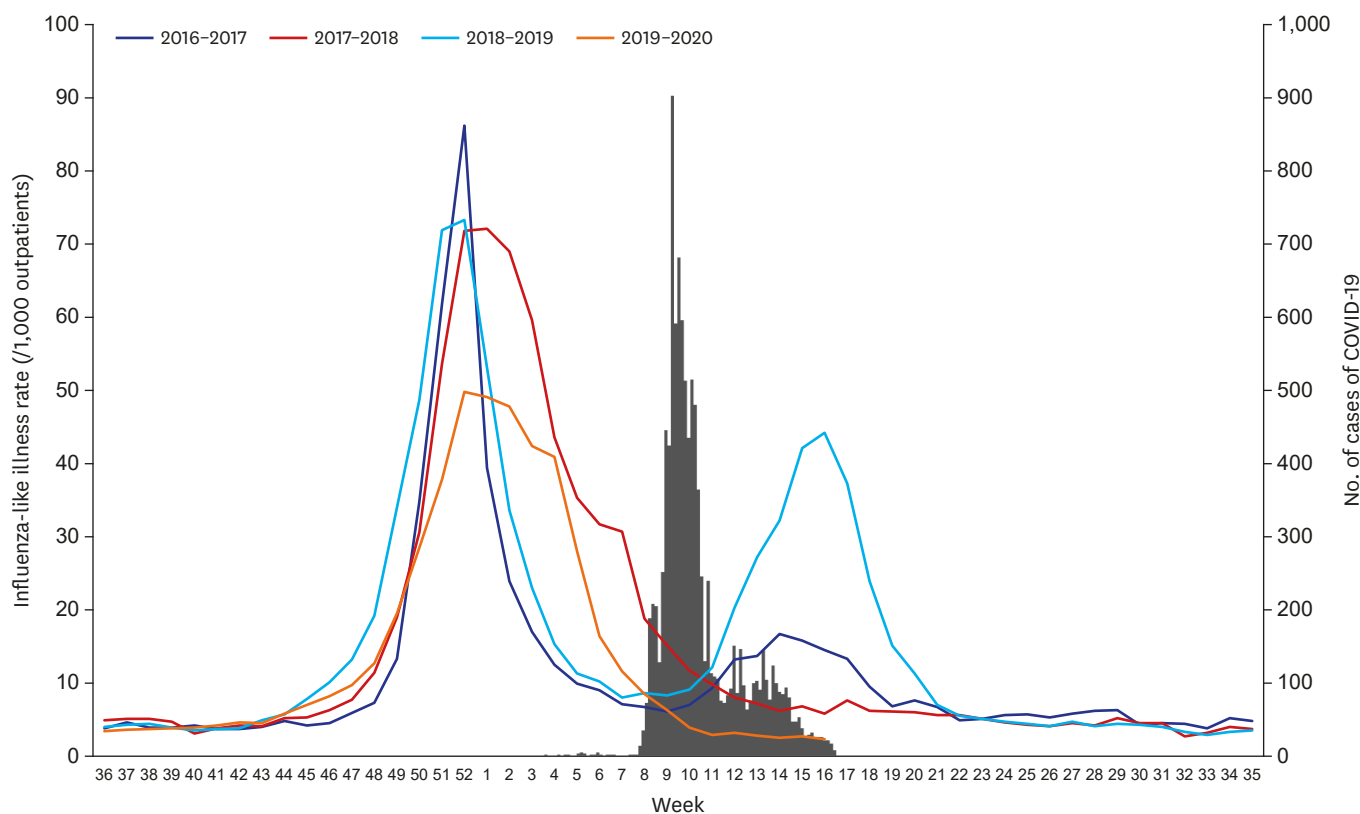


Fig. 1. Influenza-like illness rate during 2016–2020 seasons and number of cases of COVID-19 as of 18 Apr 2020, Korea.^{7,8} ILI rate of the week 53, 2016 (63.5) was not shown in the figure. COVID-19 = coronavirus disease 2019, ILI = influenza-like illness.

Table 2. Progress of COVID-19 and influenza-like illness rate from week 1 to week 6, 2020^{6-8,15}

Week	Progress of COVID-19	Cumulative No. of COVID-19 cases	ILI rate
1 (29 Dec–4 Jan)	31 Dec 2019, cluster of cases of pneumonia with unknown cause in Wuhan, Hubei province of China was reported.	-	49.1
2 (5 Jan–11 Jan)	8 Jan 2020, first patient under investigation (PUI)	-	47.8
3 (12 Jan–18 Jan)	13 Jan 2020, development of diagnostics for 2019-nCoV was launched by KCDC.	-	42.4
4 (19 Jan–25 Jan)	20 Jan 2020, first case of COVID-19	2	40.9
5 (26 Jan–1 Feb)	30 Jan 2020, WHO declared a Public Health Emergency of International Concern (PHEIC).	12	28.0
6 (2 Feb–8 Feb)	4 Feb 2020, immigration of all foreigners who have been to Hubei province, China, in past 2 weeks was banned.	24	16.4

COVID-19 = coronavirus disease 2019, ILI = influenza-like illness, KCDC = Korea Centers for Disease Control and Prevention.

of influenza epidemic during 2019-2020 season. However, extensive application of NPIs including wearing a mask and social distancing in response to COVID-19 seems to be a major factor of reduced influenza epidemic in 2019-2020, Korea.

Since a cluster of cases of pneumonia with unknown cause in Wuhan, China was reported on 31 December 2019, the first case of COVID-19 was confirmed on 20 January 2020 in Korea.^{6,7} After the first confirmed case, level of risk perception regarding SARS-CoV-2 infection raised among Korean population. Facing a movement of population and family gathering during Lunar New Year's holiday (24-27 January 2020), KCDC promoted to practice hand hygiene and mask wearing in persons who have respiratory symptoms such as cough.⁷ Government raised the national infectious disease alert level to Orange on 27 Jan 2020. Influenza-like illness rate decreased steeply from 40.9 in week 4 to 16.4 in week 6 (**Table 2**).⁸ During 2019-2020 season, detection rate of influenza viruses by Korea Influenza and Respiratory Viruses Surveillance System was also lower than those of previous three influenza seasons (**Fig. 2**).

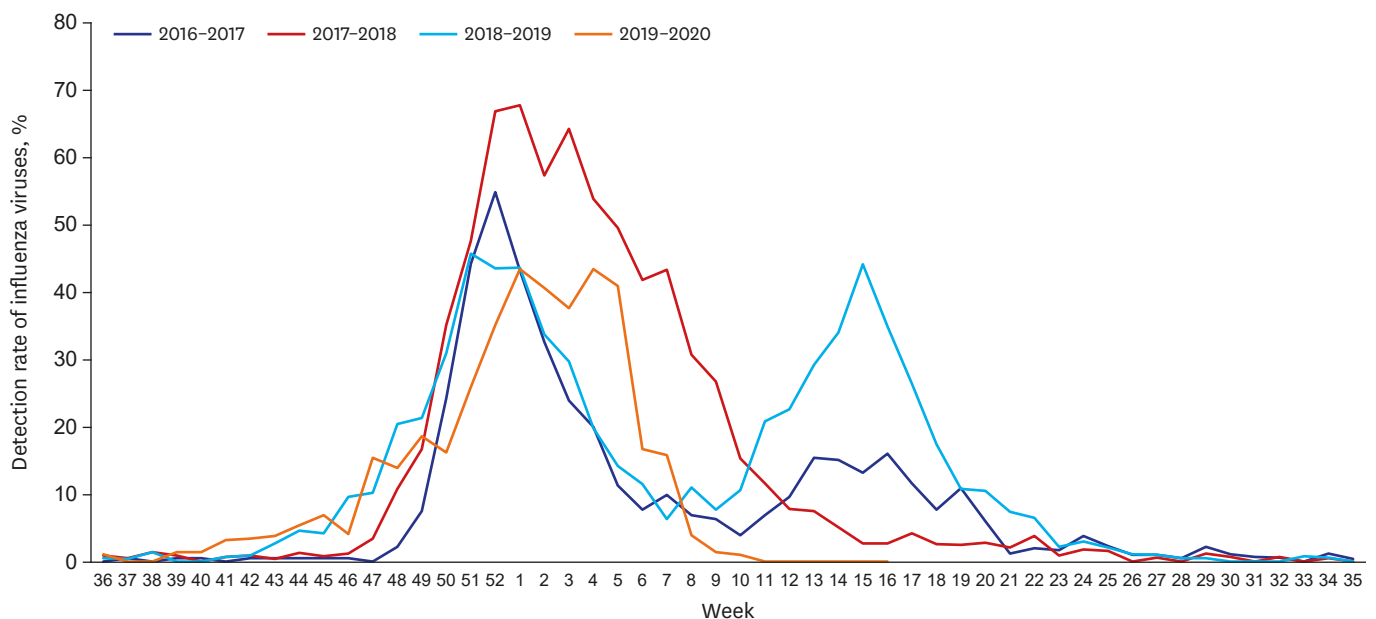


Fig. 2. Detection rate of influenza viruses by KINRESS during 2016-2020 season as of 18 Apr 2020.¹⁶ Data of the week 53, 2016 (46.8%) was not shown in the figure. KINRESS = Korea Influenza and Respiratory Viruses Surveillance System.

In Hong Kong, 44% reduction in influenza transmission in the community was estimated in early February, 2020, after the implementation of social distancing and changes in population behaviors to control the spread of COVID-19.⁹ Personal protective measures as well as workplace social distancing such as stay home from work when sick and teleworking contribute to reduction of transmission of influenza viruses and decrease the level of epidemic peak of influenza. Workplace social distancing measures showed a reduction of 23% in the cumulative influenza attack rate in the population in a previous systematic review.¹⁰

Social distancing measures with high feasibility and high acceptability should be implemented even if SARS-CoV-2 vaccines are developed in the future. Establishment of guideline for workplace social distancing might be considered. It would contribute to reduce influenza viral transmission and overall disease burden of influenza. Above all, social distancing will contribute to control influenza in vaccine mismatch year.

REFERENCES

1. Qualls N, Levitt A, Kanade N, Wright-Jegede N, Dopson S, Biggerstaff M, et al. Community mitigation guidelines to prevent pandemic influenza - United States, 2017. *MMWR Recomm Rep* 2017;66(1):1-34. [PUBMED](#) | [CROSSREF](#)
2. Wölfel R, Corman VM, Guggemos W, Seilmaier M, Zange S, Müller MA, et al. Virological assessment of hospitalized patients with COVID-2019. *Nature*. Forthcoming 2020; [PUBMED](#) | [CROSSREF](#)
3. Song JY, Yun JG, Noh JY, Cheong HJ, Kim WJ. Covid-19 in South Korea - challenges of subclinical manifestations. *N Engl J Med* 2020;382(19):1858-9. [PUBMED](#) | [CROSSREF](#)
4. Zou L, Ruan F, Huang M, Liang L, Huang H, Hong Z, et al. SARS-CoV-2 viral load in upper respiratory specimens of infected patients. *N Engl J Med* 2020;382(12):1177-9. [PUBMED](#) | [CROSSREF](#)
5. Korea Centers for Disease Control and Prevention. https://www.cdc.go.kr/board.es?mid=a20501000000&bid=0015&act=view&list_no=366659. Accessed Apr 26, 2020.
6. World Health Organization. Novel coronavirus (2019-nCoV) situation report. https://www.who.int/docs/default-source/coronaviruse/situation-reports/20200121-sitrep-1-2019-ncov.pdf?sfvrsn=20a99c10_4. Accessed Apr 27, 2020.
7. Korea Centers for Disease Control and Prevention. Coronavirus disease 2019. <http://ncov.mohw.go.kr/>. Accessed Apr 27, 2020.
8. Korea Centers for Disease Control and Prevention. Infectious disease portal. <http://www.cdc.go.kr/npt/>. Accessed May 2, 2020.
9. Cowling BJ, Ali ST, Ng TW, Tsang TK, Li JC, Fong MW, et al. Impact assessment of non-pharmaceutical interventions against coronavirus disease 2019 and influenza in Hong Kong: an observational study. *Lancet Public Health* 2020;5(5):e279-88. [PUBMED](#) | [CROSSREF](#)
10. Ahmed F, Zviedrite N, Uzicanin A. Effectiveness of workplace social distancing measures in reducing influenza transmission: a systematic review. *BMC Public Health* 2018;18(1):518. [PUBMED](#) | [CROSSREF](#)
11. Korea Centers for Disease Control and Prevention. Pathogens & vector surveillance weekly report, 2020.04.05-2020.04.18. <http://www.cdc.go.kr/npt/biz/npp/portal/nppPblctDtaView.do?pblctDtaSeAt=3&pblctDtaSn=2106>. Accessed Apr 26, 2020.
12. Korea Centers for Disease Control and Prevention. Korea influenza laboratory surveillance report in 2018-2019 season. https://www.cdc.go.kr/board/board.es?mid=a20602010000&bid=0034&list_no=365448&act=view. Accessed Apr 26, 2020.
13. Korea Centers for Disease Control and Prevention. Pathogen & vector surveillance weekly report, 6 Sep 2018. <http://www.cdc.go.kr/npt/biz/npp/portal/nppPblctDtaView.do?pblctDtaSeAt=3&pblctDtaSn=984>. Accessed Apr 26, 2020.

14. Korea Centers for Disease Control and Prevention. Weekly sentinel surveillance report. 2017. <http://www.cdc.go.kr/npt/biz/npp/portal/nppPblctDtaView.do?pblctDtaSeAt=2&pblctDtaSn=541>. Accessed Apr 26, 2020.
15. World Health Organization. Statement on the second meeting of the International Health Regulations (2005) Emergency Committee regarding the outbreak of novel coronavirus (2019-nCoV). [https://www.who.int/news-room/detail/30-01-2020-statement-on-the-second-meeting-of-the-international-health-regulations-\(2005\)-emergency-committee-regarding-the-outbreak-of-novel-coronavirus-\(2019-ncov\)](https://www.who.int/news-room/detail/30-01-2020-statement-on-the-second-meeting-of-the-international-health-regulations-(2005)-emergency-committee-regarding-the-outbreak-of-novel-coronavirus-(2019-ncov)). Accessed Apr 27, 2020.
16. Korea Centers for Disease Control and Prevention. <http://www.cdc.go.kr/npt/biz/npp/portal/nppPblctDtaMain.do>. Accessed May 2, 2020.