

Solid Phase Synthesis

Angus R. Brown^{a*}, Pedro H.H. Hermkens^b, Harry C.J. Ottenheijm^b, David C. Rees^a

^a Scientific Development Group, Organon Laboratories Ltd., Newhouse, Lanarkshire ML1 5SH, Scotland, UK

^b Scientific Development Group, NV Organon, PO Box 20, 5340 BH Oss, The Netherlands

Received 5 March 1998

Abstract: Solid phase synthesis is a rapidly expanding area of synthetic chemistry which has been concerned with the synthesis of diverse collections of "drug-like" molecules for use in the drug discovery process. The aim of this review is to introduce the basic concepts and practices of solid phase synthesis to the synthetic chemist. This includes choice of support, linker, development of the synthetic route, reaction monitoring and basic experimental aspects for carrying out reactions on the solid phase. These points are illustrated with the aid of some recent examples from the literature.

1. Introduction
2. Solid Phase Synthesis
3. Planning a Solid Phase Synthesis
 - 3.1 The Resin
 - 3.2 The Linker
 - 3.3 Reaction Monitoring
 - 3.4 Experimental Conditions
 - 3.5 Purification
 - 3.6 Automation
4. Recent Examples

1. Introduction

The widespread use of polypeptide¹ and oligonucleotide² synthesis highlights the benefits of carrying out a series of high yielding reactions whilst the target molecule remains tethered to an insoluble (filterable) solid support.³ More recently this methodology has been adopted for the synthesis of small organic molecules,⁴ and currently there is a growing number of classical organic reactions which have been successfully translated from solution onto the solid phase.⁵

2. Solid Phase Synthesis

To date, the main use of this small molecule chemistry has been directed towards high speed synthesis and biological screening of diverse libraries as part of the drug discovery process.⁶ The widespread use of solid phase synthesis is due to a large extent to the ease of manipulation when compared with classical techniques. Using a mixture of standard laboratory apparatus and inexpensive, readily available, scientific equipment⁷ it is possible to carry out a range of synthetic manipulations with little or no outlay required for ancillary equipment. This can increase the productivity of an experimentalist several fold and can also allow the isolation of multimilligram amounts of product after cleavage from the solid support and purification.

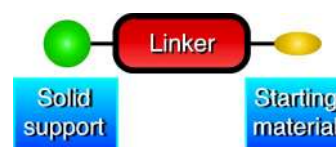
Solid phase routes often allow the use of excess reagents to force reactions to completion. Other benefits often quoted when compared to solution phase methods are the ease of isolation at each step by simple filtration, the ease of automation and also the pseudo dilution effect⁸ which can be synthetically useful in crosslinking or cyclisation reactions.

The main disadvantages of solid phase chemistry are the extra labour required to develop a solid phase route, the limitations of the current range of commercially available supports and linkers as well as the limited means of monitoring reactions in real time. Solid phase routes also necessitate additional steps to link and cleave to and from the support and are generally used to prepare < 100mg final product.

3. Planning a Solid Phase Synthesis

The execution of a solid phase synthesis requires some preparation and decisions to be made. The following stepwise approach might be helpful in this; each step is discussed briefly in the following paragraphs.

- ◆ 1: The resin
- ◆ 2: The linker; *cleavage conditions, site of attachment at target molecule, traceless linkers*
- ◆ 3: Reaction monitoring
- ◆ 4: Experimental conditions; *vessels, washing, from solution phase to solid phase*
- ◆ 5: Purification
- ◆ 6: Automation; *(i) optimisation and scope determination (ii) equipment*




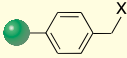
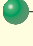
Scheme 1

3.1 The Resin

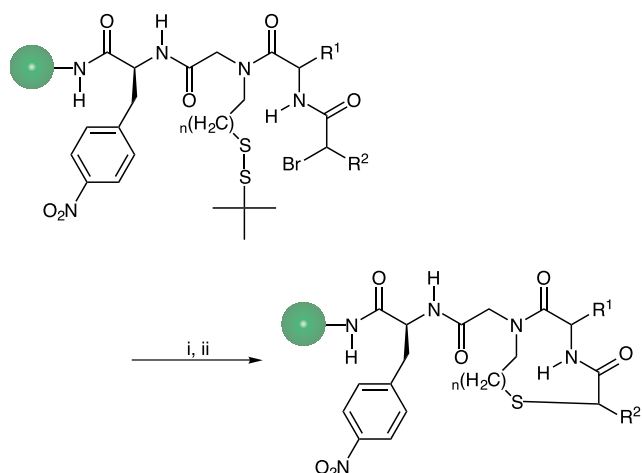
Typical small molecule synthesis is routinely carried out by immobilising a starting material (scheme 1) to the solid support. To date, the majority of published solid phase organic synthesis has been carried out on two main types of solid support (table 1).

The development of solid phase chemistry begins not only with the choice of support and linker, but also with a study of the proposed site of attachment to the target molecules. When the target molecule contains typical linking functionalities such as carboxylic acids, amides or alcohols, there is a range of commercially available resins⁹ which have been reported for the immobilisation. However, the physical/chemical compatibility of resins, linkers and reagents used can be a strong

Table 1

 Solid support	Commercially available functionalities ^a	Particle Size	Functionality	Chemical Compatibility
Polystyrene-divinylbenzene (PS-DVB) copolymer	 X = Cl (Merrifield), OH, NH ₂	100-200 mesh (75-15- μm) 200-400 mesh (38 - 75mm)	0.5 to 4.0 mmol/g	Swells in DMF, DCM, THF, Toluene, Thermally stable
Polyethylene glycol-PEG PS-DVB copolymer	 -(CH ₂) _m -(OCH ₂ CH ₂) _n -OCH ₂ CH ₂ -X X = Br, OH, NH ₂ , SH, COOH	various	0.2 to 0.5 mmol/g	Swells in both protic and aprotic solvents

determining factor in the successful outcome of a solid phase route. For example, PS-DVB is not a suitable solvent for use with aqueous solvent and Ellman *et al* found that during the synthesis of β -turn mimetics reduction of a resin bound disulfide was only possible when utilising TentaGel resin (scheme 2).¹⁰ Similarly Hauske *et al* report difficulties in performing a macrocyclisation Heck reaction using aqueous DMF on polystyrene based resin, but encountered no such difficulty with TentaGel (scheme 3).¹¹

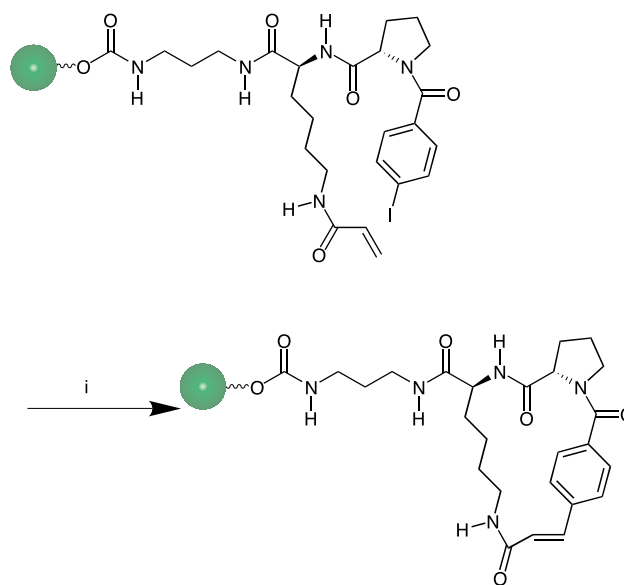


Scheme 2. i) Tributylphosphine/DMF/propanol/water
ii) Tetramethylguanidine

Typically PS-DVB resins do not swell sufficiently in these aqueous mixtures to allow diffusion of reagents into the polystyrene matrix. PEG-PS-DVB co-polymers on the other hand show good swelling properties in polar solvents and hence can give very different results when using identical conditions.

3.2 The Linker

Solid phase synthesis requires a covalent linker group, sometimes referred to as a 'handle', to attach the small molecule onto the polymeric resin. This linker bears many similarities to protecting groups in solution phase synthesis inasmuch as it needs to be stable to the reaction conditions used during the elaboration of the small molecule but it needs to be cleaved selectively at the end of the synthesis thus releasing the small molecule from the resin into solution. It should be noted that compared to solution phase synthesis this requirement for a linker often



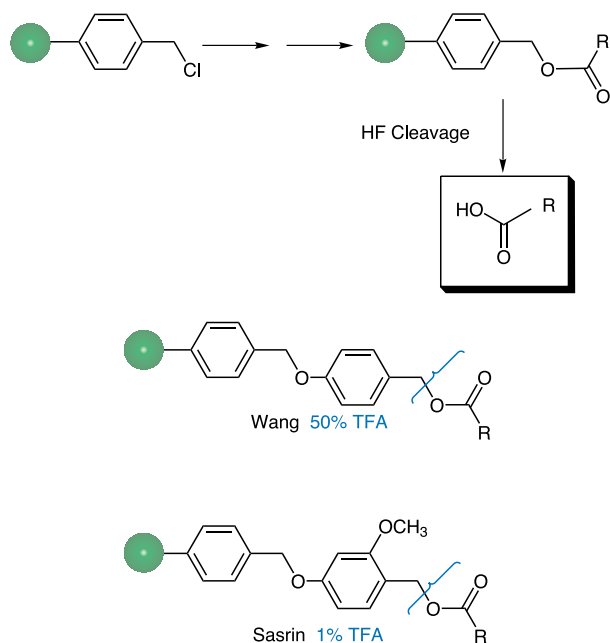
Scheme 3. i) Pd(OAc)₂, PPh₃, DMF, H₂O, Et₃N

adds two additional synthetic steps to a solid phase route. Properties of a linker which may assist solid phase synthesis are given in figure 1.

- Stable to the reaction conditions required for synthesis
- Cleaved selectively at the end of synthesis
- Re-useable
- Facilitate reaction monitoring
- Sequential / Partial release
- Asymmetric induction

Figure 1

Historically, classical solid phase peptide synthesis¹² made use of an ester group as a linker stable to peptide coupling conditions but cleaved by acid promoted hydrolysis thus liberating a carboxylic acid (Scheme 4). The very strong acid (HF) required to cleave a Merrifield type benzylic ester can be attenuated by using a Wang¹³ (50% TFA) or Sasrin¹⁴ (1% TFA) linker.



Scheme 4

The growing desire to synthesise increasingly diverse, non-peptide small molecules has led to a requirement for linkers which do not necessarily lead to a polar carboxylic acid group upon cleavage. Currently, a wide variety of linkers exist, many of which are based upon chemistry originally developed for oligomeric Solid Phase Synthesis. The selection of the most appropriate linker for a particular class of target molecule is a key factor in designing a solid phase synthesis. A summary of some of the different types of linkers/cleavages is shown in figure 2. Some specific examples are given below.

- Cyclative cleavage
- Linkers which release specific functional groups
- Traceless linkers (form a C-H bond)
- Activate-able linkers (safety catch)
- Cleavable plus functional group interconversion
- Linkers developed for stability/selectivity
- Re-useable/Recyclable linkers

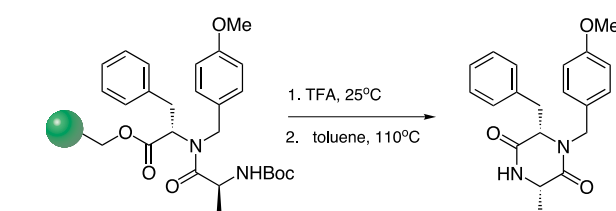
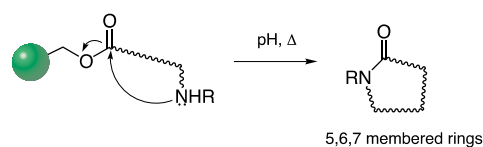
Figure 2

Cyclative cleavage¹⁵ has been used to prepare a variety of 5, 6 and 7 membered (heterocyclic) rings by cyclisation and concomitant cleavage from the resin (scheme 5).

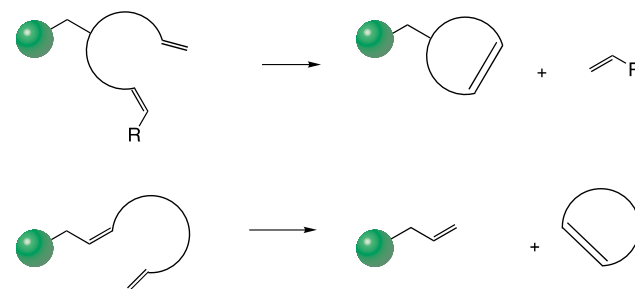
Cyclative cleavage *via* ruthenium catalysed olefin metathesis has also been reported by several groups.¹⁶ This method can be used to generate cyclic olefins or olefinic C-H bonds in the cleaved product (scheme 6).

Photochemically cleavable linkers such as the *o*-nitro-benzyl ether group (scheme 7)¹⁷ are stable to a wide variety of reaction condition whilst allowing particularly selective cleavage conditions illustrate *stable linkers* which can be cleaved using mild reaction conditions.

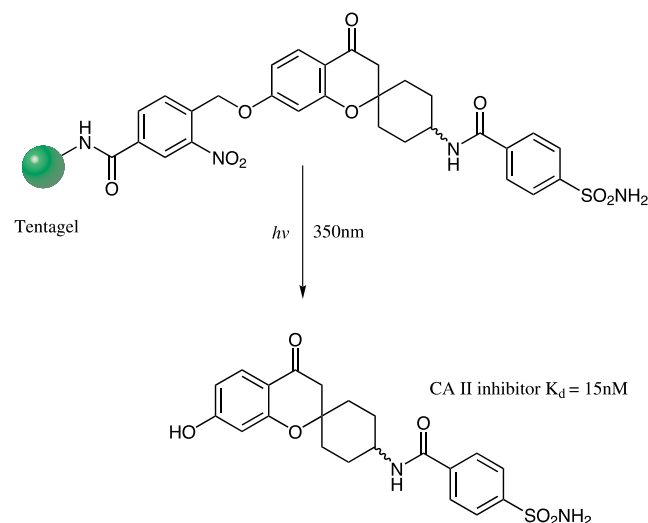
Linkers which form an unfunctionalised C-H bond upon cleavage are sometimes referred to as "*traceless linkers*" and a prototype example based upon cleavage of a C-Si bond is shown in scheme 8.¹⁸



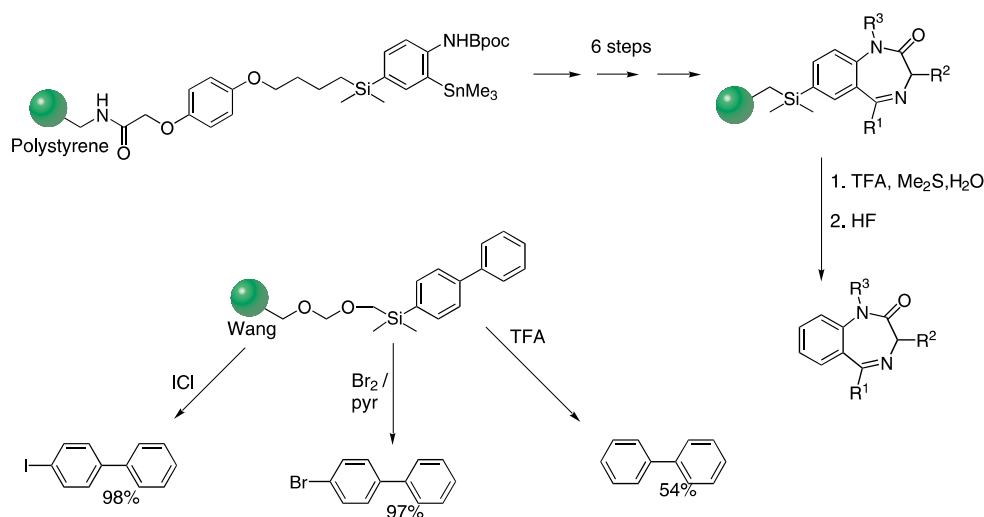
Scheme 5

Scheme 6¹⁶

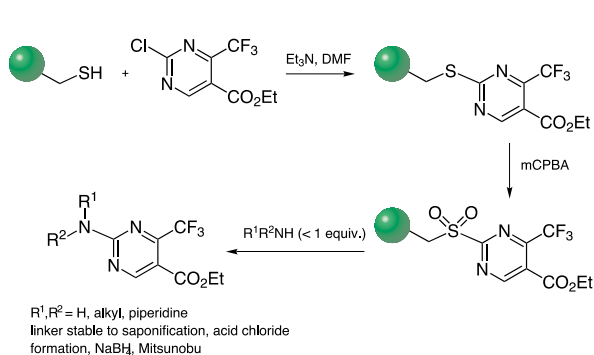
Subsequently other traceless silicon linkers have been reported some of which are easier to synthesise and are cleaved under milder conditions than scheme 8,¹⁹ and traceless linkers utilising Ge and P have also been utilised.²⁰

Scheme 7¹⁷

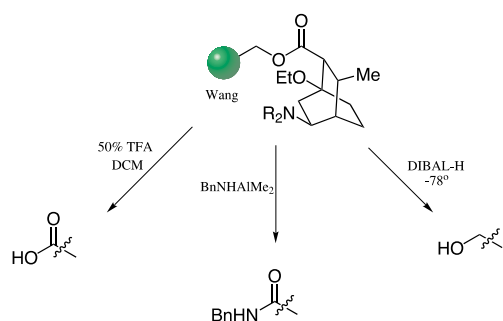
Safety catch linkers involve a functional group that is unreactive during synthetic elaboration of the small molecule but is activated by chemical transformation immediately prior to cleavage. This concept was utilised in peptide synthesis²¹ and a recent example is shown in scheme 9 where an aryl thioether is activated by oxidation to a sulfone prior to nucleophilic cleavage with a secondary amine.²²



Scheme 8



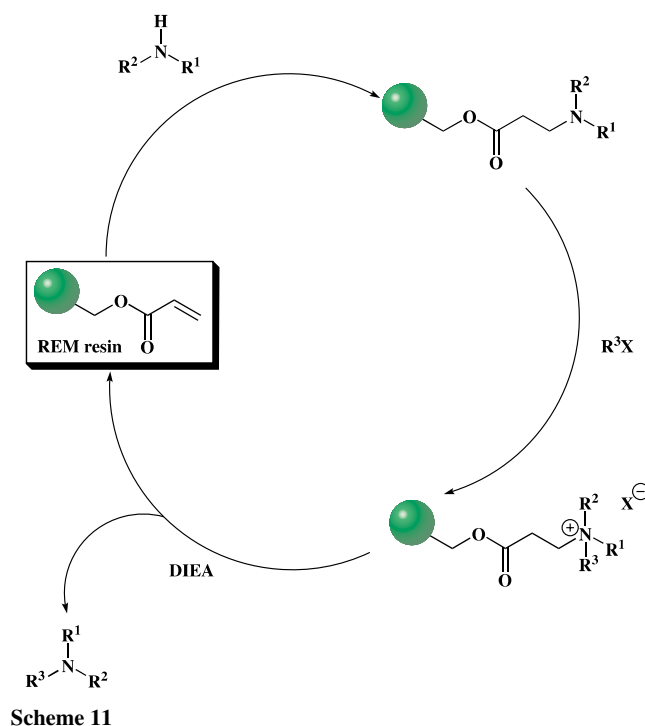
Scheme 9



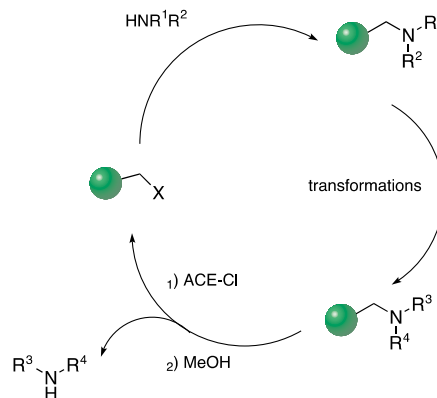
Scheme 10

A linker may be amenable to cleavage under varying reaction conditions each leading to different products. Scheme 10 shows that a classical ester linker can lead to an acid after hydrolysis or an amide after aminolysis or an alcohol after reductive cleavage.²³ This strategy may be used to increase the diversity of a compound library during the final step of a solid-phase synthesis.

Another strategy which has emerged is that of designer linkers which are particularly suited for the release of specific functional groups after cleavage. In the two examples shown below classical solution phase reactions are applied in a novel way to solid phase chemistry allowing the synthesis of tertiary (scheme 11)^{24, 25} and secondary amines (scheme 12).²⁶



Scheme 11



Scheme 12

The methodology for the synthesis of tertiary amines outlined in scheme 11 is characterised by three stages, i) Michael addition of an amine onto the acrylate (REM) resin, ii) quaternisation of the resin bound tertiary amine which serves the dual purpose of activation and adding an additional building block and iii) cleavage of the product amine via a Hofmann elimination reaction. The REM chemistry described above uses a linker that is regenerated during the cleavage. This has been successfully *reused and recycled* to produce >500 mg quantities of simple tertiary amines in good yield and high purity.²⁵ This approach offers potential for scale-up and automation. Recently the acrylate group in REM resin has been replaced by a vinyl sulfone which has improved stability to nucleophiles including Grignard reagents.²⁷ Debenzylation of tertiary amines by treatment with α -chloroethyl chloroformate (ACE-Cl) is utilised in scheme 12 to liberate a secondary amine from a polymer supported tertiary benzyl amine. The immobilised tertiary amine **3** (scheme 12) is stable towards a wide variety of reaction conditions (99% TFA; KOBu-t; NaH).

3.3 Reaction Monitoring²⁸

Once the solid support and synthetic route has been selected, the next problem comes with actually trying to determine if the chemistry is working. In solution we would normally use some form of chromatography as the first monitor (i.e. TLC).

However, with the molecule under reaction tethered to the insoluble support chromatographic monitoring is only possible after cleavage and work up. For many supports this is very labour intensive, and is normally only an option for linker functionalised supports which allow clean and fast release of substrate into a suitable solvent for trace analysis. Non-destructive methods such as IR²⁹ (figure 5) and gel-phase NMR³⁰ are methods of solid phase reaction monitoring which give useful results with standard laboratory instrumentation. The majority of functionalised polystyrene-divinylbenzene supports give very good IR spectra from KBr discs, although absorption bands from PEG-PS-DVB resins are typically of much lower intensity and are generally less useful.³¹

Fully solvated resins give good quality ¹³C NMR spectra under standard acquisition conditions and both PS-DVB and PEG-PS-DVB resins give similar quality spectra (see for example figure 3; chemistry Scheme 15). More specialised equipment is necessary to obtain good quality proton spectra and ¹H-¹³C correlation spectra from polymer supported molecules,³² although the results can sometimes justify the expense. Mass analysis has also been demonstrated as a useful analytical method for bead analysis by using MALDI-TOF MS.³³ There are also a range of classical analytical techniques which can give useful information on the progress of solid phase reactions, such as - titration of functional groups (amines, acids, thiols, etc); Elemental analysis; Gravimetric analysis; Colour tests³⁴ (Ellman-Thiols, Kaiser-amines, Bromophenol blue - basic nitrogen (figure 4), Chloranil - secondary vs. tertiary amine).

3.4 Experimental Conditions

Vessels and agitation. Typical glassware used for solution phase synthesis is also suited to solid phase reactions. Disposable fritted polypropylene vessels³⁵ are also useful for carrying out solid phase reactions at ambient temperature, although some solvents/reagents will leach plasticiser from the vessel on cleavage of the product from the support. Commercially available glass peptide vessels (Figure 6) can also be used for solid phase synthesis, but are limited in their uses.

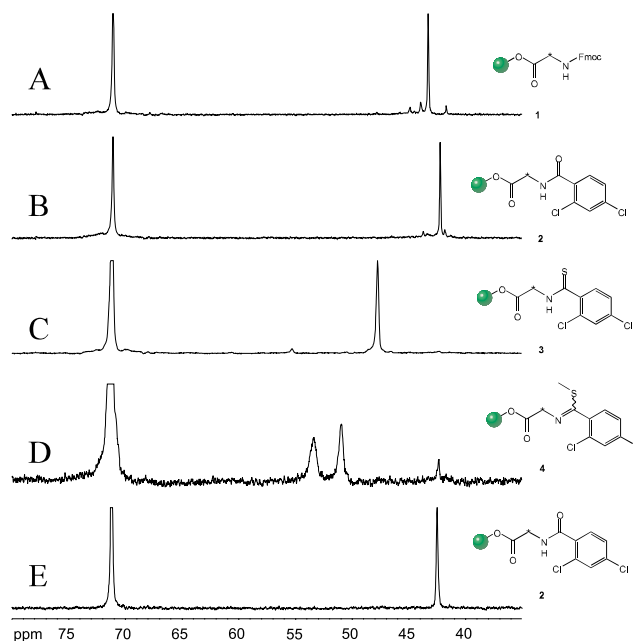


Figure 3. ¹³C gel-NMR spectra of the reaction products (scheme 15) at various stages of the syntheses (the glycine building block was ¹³C-labeled at the C α -carbon. 20-30 mg of the resin was dispersed in benzene and NMR-spectra were recorded on a Bruker DRX600 spectrometer in approximately 15 minutes.

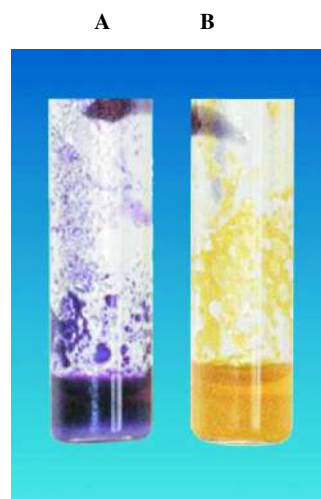


Figure 4. Bromophenol blue test with A) methylamine resin, and B) Wang resin.

Therefore at Organon we developed some of our own glassware for solid phase chemistry (Figure 7 and 8).

Solid supports show varying levels of fragmentation during agitation, and this breakdown is more pronounced at elevated temperatures. Hence, great care must be taken when deciding on methods of agitation.³⁶ Resins can successfully be stirred magnetically, but intermittent stirring and very low stirrer speeds must be used to avoid breakdown of beads and subsequent loss of material and/or slow flow rates at the filtration stage. Mechanical stirring (using slow speeds), gas sparging, vortexing and shaking are all much less destructive methods of agitation than magnetic stirring, and sonication for short periods can also be used without detrimental effects with many supports. It is also generally accepted that allowing reactions to stand without agitation

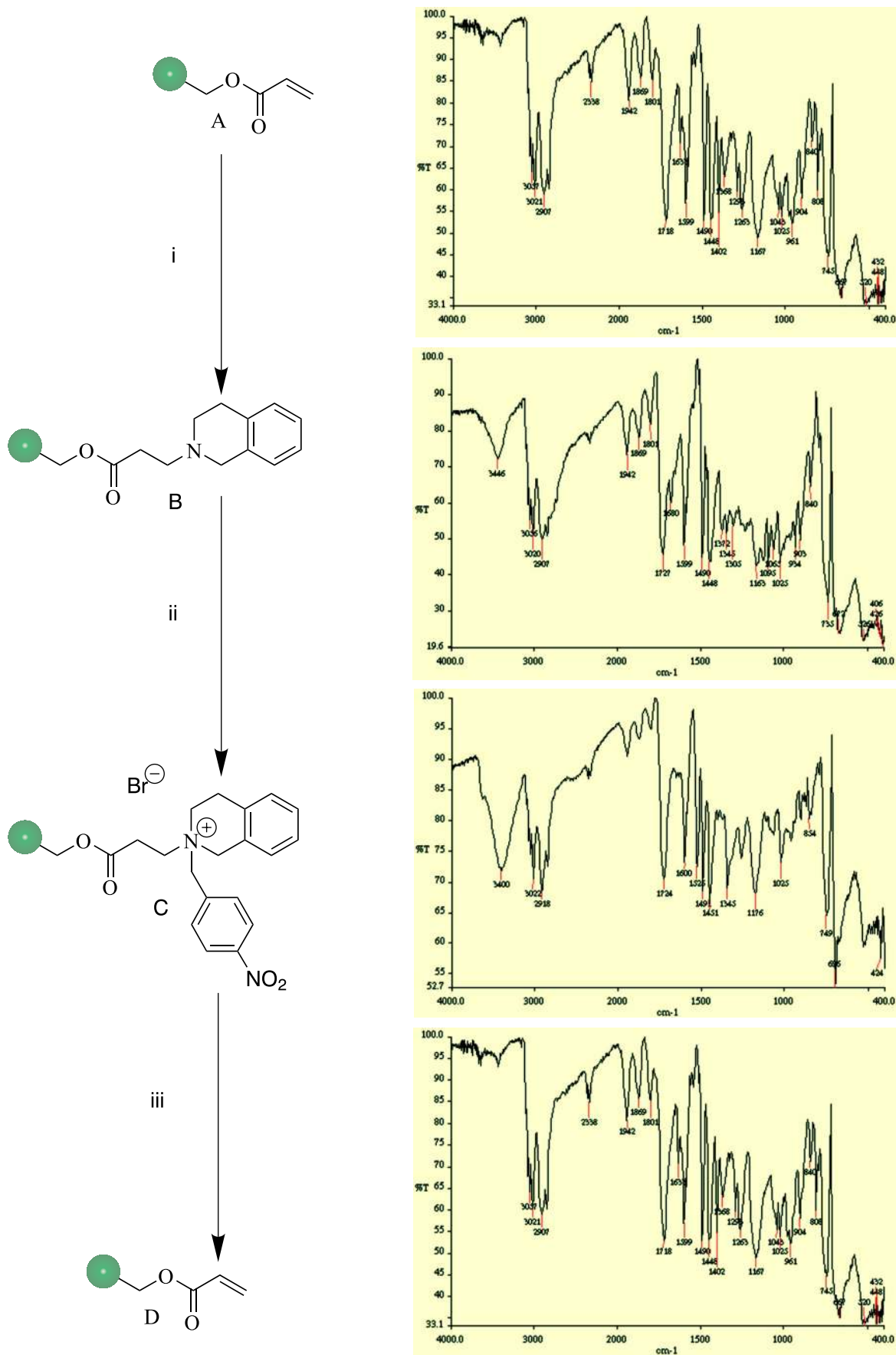


Figure 5. Illustration of IR monitoring of synthetic transformations of REM resin (see scheme 11)^{24, 25}



Figure 6

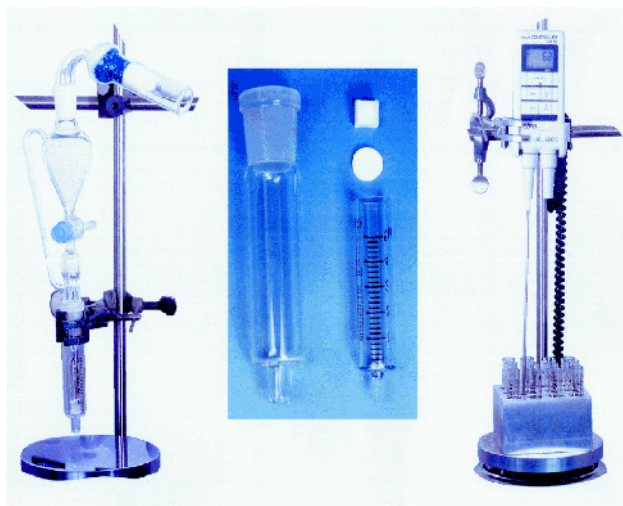


Figure 7. Centre: Reactor (normal glass syringe, disposable frit (PE or PTFE), stirbar) and glass container. Left: Glass container with reactor and on top a droppingfunnel. Right: 12 reactors is a commercially available heating-block. Stirring and heating can be controlled by standard heating/stirring device.



Figure 8. Inset: Reactor with glass frit, container, stirbar and connector. Main picture: Reactor in container and on top a reflux condenser.

gives good results when using swelling solvents and high yielding reactions.

Washing. After each synthetic step and prior to cleavage, the solid support must be exhaustively washed with a range of solvents in order to remove reactants from the resin matrix. It is common practice to alternate swelling solvents, followed by miscible, non-swelling solvents. The final rinse solvent should then fully solvate the resin in preparation for the next step. Resin washing between steps can be carried out by decantation, centrifugation, filtration via canula or funnel, and several suppliers offer fritted glassware suitable for peptide chemistry which can also be used for general room temperature solid phase reactions. Figure 9 shows a commercially available Vacuum manifold for parallel resin washing/product isolation.

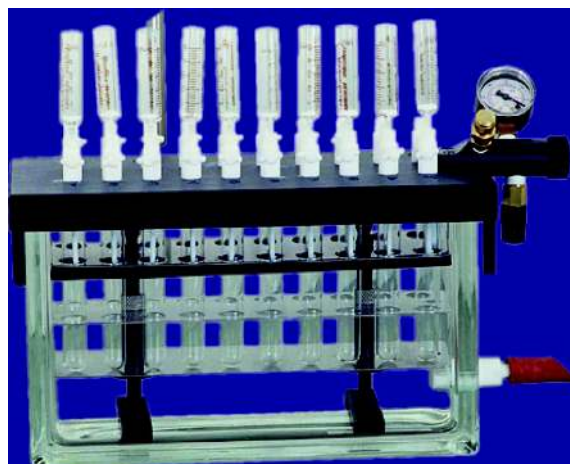
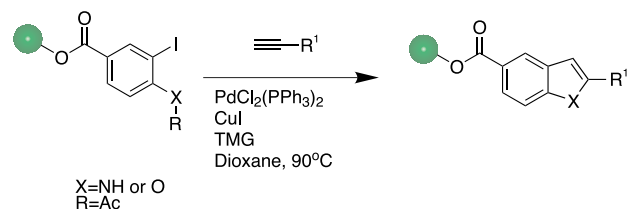


Figure 9. Vacuum manifold for parallel resin washing/product isolation

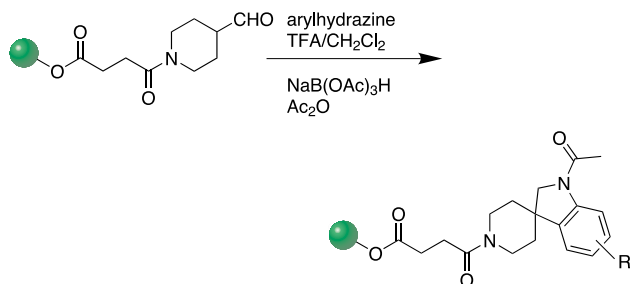
From solution phase to solid phase

The starting point is the conditions described in the solution-phase chemistry (reagents, solvents, temperature) of the reaction under study. These conditions can then be translated onto solid phase, provided they are amenable to the overall requirements of the resins and linkers as described above. This approach is illustrated by the work of a group from Pharmacia & Upjohn³⁷ who described initial model experiments in solution to study the Pd-catalysed coupling of alkynes to iodoaniline derivatives followed by a cyclisation step resulting in indole and benzofuran moieties. The use of tetramethylguanidine (TMG) as a co-solvent allowed complete conversion. It was found that the solution-phase conditions could be transferred to solid-phase without difficulties (Scheme 13).



Scheme 13

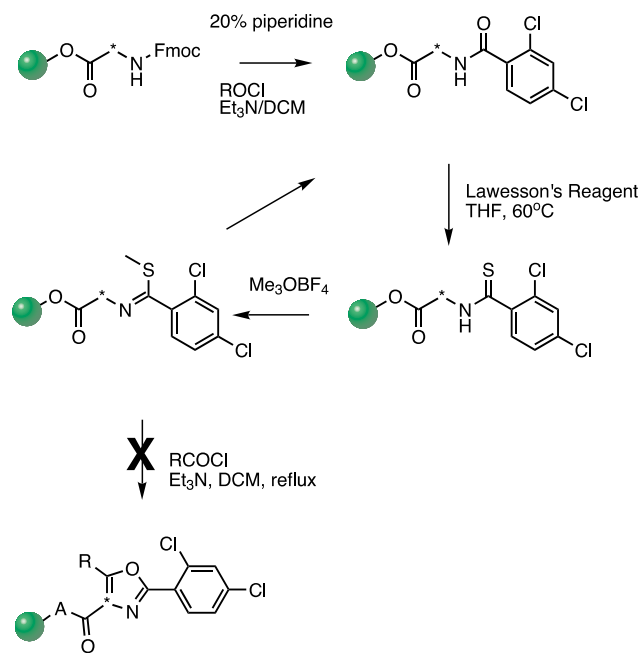
Another example in which the solution-phase conditions were a good starting point for the transfer to solid-phase has been presented by Y. Cheng et.al.³⁸ of Merck Research Laboratories (Scheme 14).



Scheme 14

Various arylhydrazines were studied in the Fischer indole reaction. It was found that TFA as a catalyst and methylene chloride as solvent were crucial in this reaction.

An example in which the direct translation from solution phase to solid phase failed is taken from some recent work carried out at Organon (Scheme 15). The conversion of glycine to oxazoles was studied utilising the published solution phase conditions.³⁹ The reactions were monitored by IR⁴⁰ and ¹³C gel nmr spectroscopy (figure 3). The transformations proceeded smoothly until the final ring closure step. In this case the conditions described for solution phase chemistry failed to give the anticipated ring closure product when carried out on solid phase. Under these conditions the amide compound (E) was regenerated.



Scheme 15

3.5 Purification

Whilst classical methods of purification are equally applicable to the product obtained from a solid phase synthesis, many of these methods are not amenable to parallel purification of multiple samples obtained from this route. As a consequence many innovative approaches to this problem are being developed. Solid phase extraction⁴¹ allows rapid isolation of multimiligram amounts of compound by utilising a variety of modes (e.g. normal and reverse phase, as well as ion-exchange) and

formats (e.g. 96 well plate). A more expensive option is semi-preparative HPLC utilising new developments in column technology to cut down run times to less than 10 minutes. Some manufacturers are also offering multiple parallel HPLC systems, and HPLC with mass spectrometry directed fraction collection. Both of which will have a major impact in the way the products from a solid phase route are isolated in the near future.

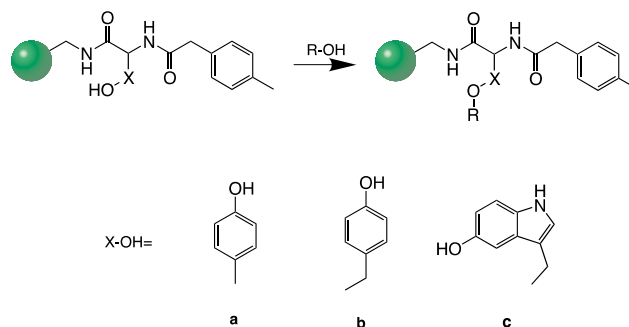
3.6 Automation

One of the main advantages of solid phase chemistry is its amenability to automation and hence synthesis of compound libraries. However, this is usually only possible after the experimental conditions have been optimised and trial reactions have been performed to determine the variety of reagents (building blocks) that can be appropriately utilised. Frequently, it takes several months of experimental work to turn an initially reported solid phase synthesis into a route suitable for library production.

Optimisation and scope determination

Optimisation is aimed towards high yielding, reliable and clean reactions by varying solvents, reagents, reagent concentrations and temperature. Application of a synthesis robot may expedite this study. Monitoring of the reactions (*vide supra*) is important for a rapid feedback in this optimisation procedure.

R.M. Valerio *et al.*⁴² of Chiron Mimotopes described the optimisation of the Mitsunobu chemistry carried out on Multipin synthesis for the preparation of ethers (Scheme 16).



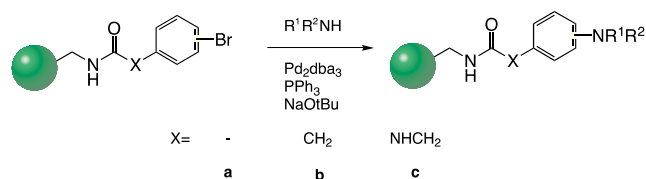
Scheme 16

In the initial experiments, a number of different variables were investigated simultaneously on model phenolic structure **a**. These include solvents (x6), temperature (x3), reaction time (1-4 days), reactant concentrations, types of phosphine (x3), presence of base and type of alcohol. The optimal conditions described are;

- THF as solvent
- temperature is 37°C
- reaction time is between 48-96 hours
- reactant concentrations are 0.15M (phosphine, DEAD and alcohol) and 0.45M (base)
- optimal phosphine is PPh₃
- addition of TEA improves conversion

Thereafter these optimum conditions have been tested on all three model phenolic systems **a-c** with a range of alcohols with success.

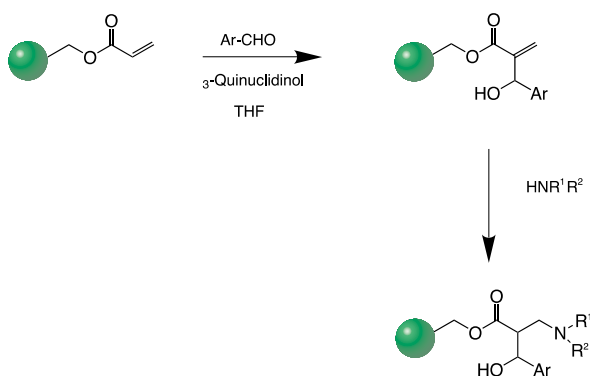
C.A. Willoughby *et al.*⁴³ of Merck Research Laboratories described the optimisation of the reaction of polymer-bound aryl bromides with amines in the presence of a palladium catalyst (see Scheme 17).



Scheme 17

After screening several phosphines and solvents (the number of experiments has not been mentioned) it was found that for cyclic amines, anilines and secondary amines the optimal Pd-ligand was $P(\text{o-tolyl})_3$ and the solvent of choice was dioxane. For the synthesis of primary amines the biphosphine ligand BINAP was the best choice. With the appropriate ligand selection, this chemistry can be successfully used for coupling of primary amines, secondary amines (cyclic and acyclic) and anilines.

H. Künzer *et al.*⁴⁴ of Schering AG reported the optimisation of the Baylis Hillman reaction of a set of aldehydes to polymer-bound acrylic acid followed by the Michael additions of secondary amines (see Scheme 18).



Scheme 18

In a single run, 18 discrete resin-bound combinations were automatically assembled in triplicate on a 60-well reactor block (Syro) from 6 aldehydes and 3 secondary amines.

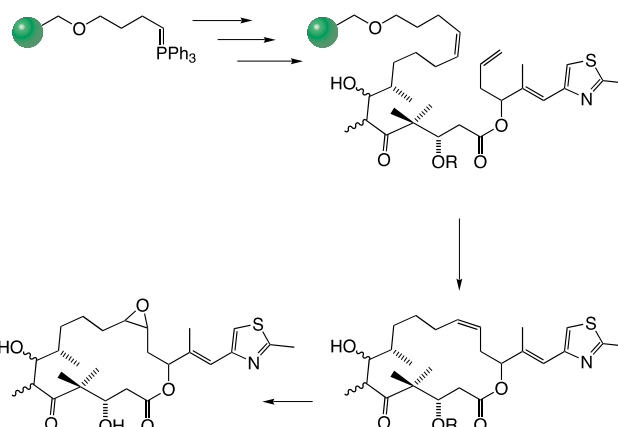
Equipment

In Tetrahedron Report No 418⁵ we included a table of commercially available equipment for automated, solid-phase organic chemistry in the high price category (above \$125,000). In this review we present a table of commercially available, low budget (below \$30,000) solid-phase synthesis equipment (Table 2). This Table gives only the most elementary equipment (*i.e.* synthesis units) while information on extra additions (software, robotics etc.) is given in the footnotes.

4. Recent examples

Non-oligomeric natural product synthesis on the solid phase is not a new development,⁴⁵ but recently Nicolaou¹⁶ has extended the utility of solid phase synthesis within a multistep synthesis of a complex natural product. The solid-phase synthesis of epothilone A (Scheme 19) represents a new development for the total synthesis of natural products

and opens the way for the generation of large combinatorial natural product libraries.



Scheme 19

Acknowledgement

The measurements reported in figures 3 and 5 were made by Y. Diepeveen and L. Orbons, and J. R. Morphy and A. Osprey respectively.

References

- (1) Atherton, E.; Sheppard, R.C. *Solid Phase Peptide Synthesis: A Practical Approach*; Oxford University: Oxford, 1989.
- (2) Gait, J.M. *Solid Phase Oligonucleotide Synthesis: A Practical Approach*; IRL: Oxford, 1989.
- (3) Erickson, B.W.; Merrifield, R.B. In *The Proteins*, 3rd ed., Vol. 2; Neurath, H.; Hill, R.L., Eds.; Academic: New York, 1976; p 255.
- (4) Balkenhöhl, F.; v d Bussche-Hünnefeld, C.; Lansky, A.; Zechel, C. *Angew. Chem. Int. Ed. Engl.* **1996**, 35, 2288
- (5) Hermkens, P.H.H.; Ottenheijm, H.C.J.; Rees, D.C. Tetrahedron Report 394, *Tetrahedron* **1996**, 52, 4527-4554 b) Hermkens, P.H.H.; Ottenheijm, H.C.J.; Rees, D.C. Tetrahedron Report 418, *Tetrahedron* **1997**, 53, 5643-5678.
- (6) *Combinatorial Peptide and Non Peptide Libraries - A Handbook*; Jung, G., Ed.; VCH: Weinheim, 1996.
- (7) Floyd, C.D.; Lewis, C.N.; Whittaker, M. *Chem. Brit.* **1996**, 32, 31.
- (8) Jayalekshmy, P.; Mazur, S. *J. Am. Chem. Soc.*, **1976**, 98, 6710.
- (9) Resins suitable for solid phase synthesis are available from Aldrich, Fluka, Novabiochem, ACT, Argonaut, Polymer Laboratories and Rapp Polymere.
- (10) Ellman, J.A.; Virgilio, A.A. *J. Am. Chem. Soc.*, **1994**, 116, 11580.
- (11) Hiroshige, M.; Hauske, J.R.; Zhou, P. *J. Am. Chem. Soc.*, **1995**, 117, 11590.
- (12) Merrifield, R.B. *J. Am. Chem. Soc.*, **1963**, 85, 2149.
- (13) Wang, S.S. *J. Am. Chem. Soc.*, **1973**, 95, 1328.
- (14) Mergler, M.; Tanner, R.; Gosteli, J.; Grogg, P. *Tetrahedron Lett.*, **1988**, 22, 4005.
- (15) Gordon, D.W.; Steele, J. *Bioorg. Med. Chem. Lett.* **1995**, 5, 47.
- (16) Nicolaou, K.C.; Winssinger, N.; Pastor, J.; Ninkovic, S.; Sarabia, F.; He, Y.; Vourloumis, D.; Yang, Z.; Li, T.; Giannakakou, P.; Hamel, E. *Nature* **1997**, 387, 268-272. van Maarseveen, J.H.; den Hartog, J.A.J.; Engelen, V.; Finner, E.; Visser, G.; Kruse, C.G. *Tetrahedron Lett.*, **1996**, 37, 8249-8252. Peters, J-U.; Bleichert, S. *Synlett* **1997**, 348-350

Table 2. Commercially available low-budget synthesis equipment

Company	Name	Price	Reactor info	mixing	temp. range	recovery of solvents	filtration system	comments
Charybdis Technologies Inc ^a	Calypso System TM	Basic Kit ^b \$6,100 Reaction Block \$1,800	<ul style="list-style-type: none"> • 96 well filtration microtiter plate (8 by 12 orthogonal array) • optional are 24 and 48 well models • 2 ml volume, glass wells 	3-axis, micro-orbit platform agitation	-50 to 140°C	yes closed system; pressure and/or vacuum	in-situ pressure and/or vacuum	<ul style="list-style-type: none"> • solid and solution phase • modular approach • parallel synthesis • full chemical compatibility • closed system • atmospheric control; 0-30 psi gas pressure (N₂, Ar, H₂, CO₂, CO etc.)
Rapp Polymere	APOS 1200	\$ 13,575 ^c DEM 21,690	<ul style="list-style-type: none"> • 12 positions • glass reactors • 2-3 ml solvent • 200 mg resin 	gas bubbles	-60 to 150°C	yes reflux	in-situ vacuum glass filter	<ul style="list-style-type: none"> • solid and solution phase • modular approach • open system • full chemical compatibility
Rapp Polymere	SYREM	\$ 1,850 DEM 2,990	<ul style="list-style-type: none"> • 96 well microtiter plate • glass reactors • 150 and 450 µl 	platform agitation	RT	no	in-situ vacuum glass filters	<ul style="list-style-type: none"> • solid and solution phase • modular approach • open system • parallel synthesis
Chemglass and Diversomer Technologies	8-100 Synthesizer	\$795 ^{d,e,f}	<ul style="list-style-type: none"> • 8 positions • glass reactors • 6 or 10 ml volume • 100 mg resin 	stirbars or platform agitation	-60 to 200°C	yes reflux	in-situ gravity glass filter	<ul style="list-style-type: none"> • solid and solution phase • modular approach • parallel synthesis • full chemical compatibility
Chemglass and Diversomer Technologies	40-100 Synthesizer	\$1,795 ^{d,e,f}	<ul style="list-style-type: none"> • 40 positions • glass reactors • 6 or 10 ml volume • 100 mg resin 	stirbars or platform agitation	-60 to 200°C	yes reflux	in-situ gravity glass filter	<ul style="list-style-type: none"> • solid and solution phase • modular approach • parallel synthesis • full chemical compatibility
Chemglass and Diversomer Technologies	10-800 Synthesizer	\$1,350 ^{d,e,f}	<ul style="list-style-type: none"> • 10 positions • glass reactors • 30 ml volume • 800 mg resin 	stirbars or platform agitation	-60 to 200°C	yes reflux	in-situ gravity glass filter	<ul style="list-style-type: none"> • solid and solution phase • modular approach • parallel synthesis • full chemical compatibility
MultiSynTech	SYRO Manuell System (SMS)	DEM 55,000 ^g	<ul style="list-style-type: none"> • 40, 60 or 96 positions • glass reactors • 2, 5 or 10ml volume • 10-200 mg resin 	stirbars	-30 to 150°C	yes reflux	in-situ vacuum glass filters	<ul style="list-style-type: none"> • solid phase • parallel synthesis • full chemical compatibility
CSPS	Multiblock ^h	\$2,390	<ul style="list-style-type: none"> • 42 positions • syringes • 2 ml volume • 10-200 mg resin 	platform agitation	-20 to 70°C	no	in-situ vacuum	<ul style="list-style-type: none"> • solid phase • parallel and split/pool • modular approach
BOHDAN	Solid-Phase Synthesis Block Model: SPS	\$24,500 to \$34,500	<ul style="list-style-type: none"> • 48 positions • 18 x 125 mm • glass reactors • sintered glass frit 	orbital shaking + argon bubbling through frit + argon bubbling through cannula	-40 to 200°C	yes reflux and pressure up to 2 bars	in-situ bottom filtration through frit	<ul style="list-style-type: none"> • solid phase and solution phase, parallel synthesis • modular approach • full chemical compatibility • delivery of argon by 3 methods to each vessel
BOHDAN	RAM Synthesizer TM Model: AR S 300	\$18,900	<ul style="list-style-type: none"> • 48 positions • 16 x 125 mm glass reactors • internal filter stick 	Orbital shaking + argon bubbling through cannula	-40 to 200°C	Reflux and pressure up to 2 bars	in-situ Top filtration	<ul style="list-style-type: none"> • Solid phase chemistry • MicrotubeTM reactors • solution phase • parallel synthesis • split/pool • full chemical compatibility • delivery of argon by 2 methods to each vessel
Chiron Technologies	SynPhase ^T M Crowns Multipin TM System Transtems	currently not available	<ul style="list-style-type: none"> • 96 Crowns per holder in the Multipin format • Multiple holders are used in parallel • Can be used in standard laboratory glassware • Three types of crowns (Q-, I- and P-Series) • wide range of loadings (between 1-46 µMol/crown) and 3 different grafted surfaces 	platform agitation or sonification	20 to 80°C	Multipin format; higher boiling solvents may be employed	not required	<ul style="list-style-type: none"> • Crowns can be used as a replacement for resins • parallel synthesis and split/pool • single compounds or mixtures • Multipin can be augmented by the use of Transtems which allows radio frequency tracking of individual crowns • amenable for robotic sorting

(17) Burbaum, J. J.; Ohlmeyer, M. H. J.; Reader, J. C.; Henderson, I.; Dillard, L. W.; Li, G.; Randle, T. L.; Sigal, N.H.; Chelsky, D.; Baldwin, J. J. *Proc. Natl. Acad. Sci. USA*, **1995**, 92, 6027.

(18) Plunkett, M.J.; Ellman, J.A. *J. Org. Chem.*, **1995**, 60, 6007.

(19) Han, Y.; Walker, S.D.; Young, R.N. *Tetrahedron Lett.*, **1996**, 37, 2703. see also Newlander, K. A.; Chenera, B.; Veber, D. F.; Yim, N. C. F.; Moore, M. L. *J. Org. Chem.*, **1997**, 62, 6726. Woolard, F. X.; Paetsch, J.; Ellman, J. A. *J. Org. Chem.*, **1997**, 62, 6102.

Table 2. (continued)

Whatman polyfiltronics	PolyWhat Kits ⁱ	Kit001 DEM 4,800 Kit 002 DEM 6,150 Kit 003 DEM 4,900 Kit 004 DEM 9,600	<ul style="list-style-type: none"> • 96 well microtiter plate • MultiCHEM or polypropylene material • Polykryptonite membrane • 2 ml chamber 	Kit 001-003 platform agitation Kit 004 mixing by inert gas	-80 to 140°C	yes Kit 002-004 by pressure CombiClamp	in-situ bottom filtration through membrane	<ul style="list-style-type: none"> • solid and solution phase • modular approach • semi-closed system • parallel synthesis • partial chemical compatibility
Robbins Scientific	Flexchem Organic Synthesis system	\$ 1830 ^k	<ul style="list-style-type: none"> • 96 and 48 chamber reaction block • polypropylene • polyethylene frit • disposable • 2ml (96 well) and 5 ml (48 well) • top and bottom sealed independently 	platform agitation or with FlexChem Rotating Incubator	FlexChem Rotating Incubator to 100°C	yes by pressure	in-situ bottom filtration through filter vacuum	<ul style="list-style-type: none"> • solid and solution phase • modular approach • semi-closed system • parallel synthesis • compatible in nearly every solvent tested
Argonaut	Quest 210	\$25,000 ^l	<ul style="list-style-type: none"> • 2 by 10 reactors • teflon reactors • reactors visible • 5 and 10 ml volume • 250 to 500 mg resin 	vertical oscillation	-40 to 150°C two independent banks	Yes closed system	in situ positive pressure for bottom filtration through teflon frits	<ul style="list-style-type: none"> • solid and solution phase • liquid-liquid extraction • on-line cleavage • on-line purification (SPE cartridges) • addition of solids • rv to rv transfer (scavengers)

a) For detailed description see: <http://www.charbytech.com>

b) Basic kit: Reaction Block, 96 well; 96-well Multi-Temp. Reactor, Filtration; 96 well gas manifold, vacuum manifold

c) Price of smallest stand alone unit. (Price of system incl.: extra reaction unit, pipett unit, temp. control, PC and software \$ 50,875).

d) Price excluding glassware.

e) DTI 2000 series (software, agitator, temperature controller, synthesizers, heater units, glassware, aluminium blocks) between \$15,000 to \$49,000 depending upon the options.

f) DTI 3000 series (DTI 2000, liquid handling robot, valve, racks, wash station, cup, needles) \$95,000 to \$129,000 depending upon options.

g) Extra options are; Temp. range -60 to 150°C and in-situ cleavage (DEM 78,000)

h) For detailed description see <http://www.5z.com/csp>

i) For detailed description see <http://www.polyfiltronics.com/polywhat.html>

j) For detailed description see <http://www.robsci.com/hitsyn.html>

k) Price of smallest stand alone unit. (Price of system incl.: FlexChem Rotating Incubator extra \$12,500). Prices outside U.S. will be higher.

l) With optional automated washing \$31,500.

- (20) Hughes, I. *Tetrahedron Lett.*, **1996**, 37, 7595. Bunin, B.A.; Plunkett, M.J.; Ellman, J.A. In *Combinatorial Peptide and Non Peptide Libraries - A Handbook*; Jung, G., Ed.; VCH: Weinheim, 1996; p405.
- (21) Kenner G.W.; McDermott, J.R.; Sheppard, R.C. *J. Chem. Soc. Chem. Commun.* **1971**, 636, 637.
- (22) Gayo, L.M.; Suto, M.J. *Tetrahedron Lett.* **1997**, 38, 211. Obrecht, D.; Abrecht, C.; Grieder, A.; Villalgorido, J. M. *Helv. Chim. Acta*, **1997**, 80, 65.
- (23) Ley, S.V.; Mynett, D.M.; Koot, W.-J. *Synlett* **1995**, 1017.
- (24) Morphy, J. R.; Rankovic, Z.; Rees, D. C. *Tetrahedron Lett.* **1996**, 37, 3209.
- (25) Brown, A.R.; Rees, D.C.; Rankovic, Z.; Morphy, J. R. *J. Am. Chem. Soc.*, **1997**, 119, 3288.
- (26) Conti, P.; Dermont, D.; Cals, J.; Ottenheijm, H.C.J.; Leysen, D. *Tetrahedron Lett.*, **1997**, 38, 2915.
- (27) Kroll, F. E. K.; Morphy, R.; Rees, D.; Gani, D. *Tetrahedron Lett.* **1997**, 38, 8573. Heinonen, P.; Lönnberg, H. *Tetrahedron Lett.* **1997**, 38, 8569.
- (28) Egner, B.J.; Bradley, M. *Drug Discovery Today* **1997**, 2, 102.
- (29) Hauske, J.R.; Dorff, P. *Tetrahedron Lett.*, **1995**, 36, 1589.
- (30) Look, G.C.; Holmes, C.P.; Chinn, J.P.; Galop, M.A. *J. Org. Chem.*, **1994**, 59, 7588.
- (31) *Combinatorial Peptide and Non Peptide Libraries - A Handbook*; Jung, G., Ed.; VCH: Weinheim, 1996.
- (32) Seeberger, P.H.; Beebe, X.; Sukenick, G. D.; Pochapsky, S. J.; Danishefsky, S. J. *Angew. Chem. Int. Ed. Engl.* **1997**, 36, 491.
- (33) Egner, B.J.; Langley, G.D.; Bradley, M. *J. Org. Chem.* **1995**, 60, 2652.
- (34) Representative resin tests are listed within the 1997/98 Novabiochem Catalogue & Peptide Synthesis Handbook - Synthesis Notes S38.
- (35) Available from Bio-Rad Laboratories Ltd. Hemel Hempstead, HP2 7TD, UK. See also reference 7.
- (36) Li, W.; Yan, B. *Tetrahedron Lett.* **1997**, 38, 6485.
- (37) Fagnola, M.C.; Candiani, I.; Visentin, G.; Cabri, W.; Zarini, F.; Mongelli N.; Bedeschi A. *Tetrahedron Lett.*, **1997**, 38, 2307.
- (38) Cheng, Y.; Chapman, K.T. *Tetrahedron Lett.*, **1997**, 38, 1497.
- (39) Yokoyama, M.; Menjo, Y.; Watanabe, M.; Togo, H. *Synthesis* **1994**, 1467.
- (40) Deben, I. E. A.; Vanwijk, T. H. M.; Vandoornum, E. M.; Hermkens, P. H. H.; Kellenbach, E. R.; F. *Mikrochimica Acta* **1997**, 245.
- (41) Siegel, M. G.; Hahn, P. J.; Dressman, B. A.; Fritz, J. E.; Grunwell, J. R.; Kaldor, S. W. *Tetrahedron Lett.*, **1997**, 38, 3357.
- (42) Valerio, R.M.; Bray, A.M.; Patsiouras, H. *Tetrahedron Lett.*, **1997**, 38, 3019.
- (43) Willoughby, C.A.; Chapman, K.T. *Tetrahedron Lett.*, **1996**, 37, 7181.
- (44) Prien, O.; Röfing, K.; Thiel, M.; Künzer, H. *Synlett* **1997**, 325.
- (45) Leznoff, C.C. *Acc. Chem. Res.*, **1978**, 11, 327.