

Solvent Induced Transition from Wrinkles to Creases in Thin Film Gels with Depth-Wise Crosslinking Gradients

Murat Guvendiren,^a Jason A. Burdick^{*a} and Shu Yang^{*b}

^a Department of Bioengineering, University of Pennsylvania, 210 S 33rd Street, Philadelphia, PA 19104, USA.

^b Department of Materials Science and Engineering, University of Pennsylvania, 3231 Walnut Street, Philadelphia, PA 19104, USA

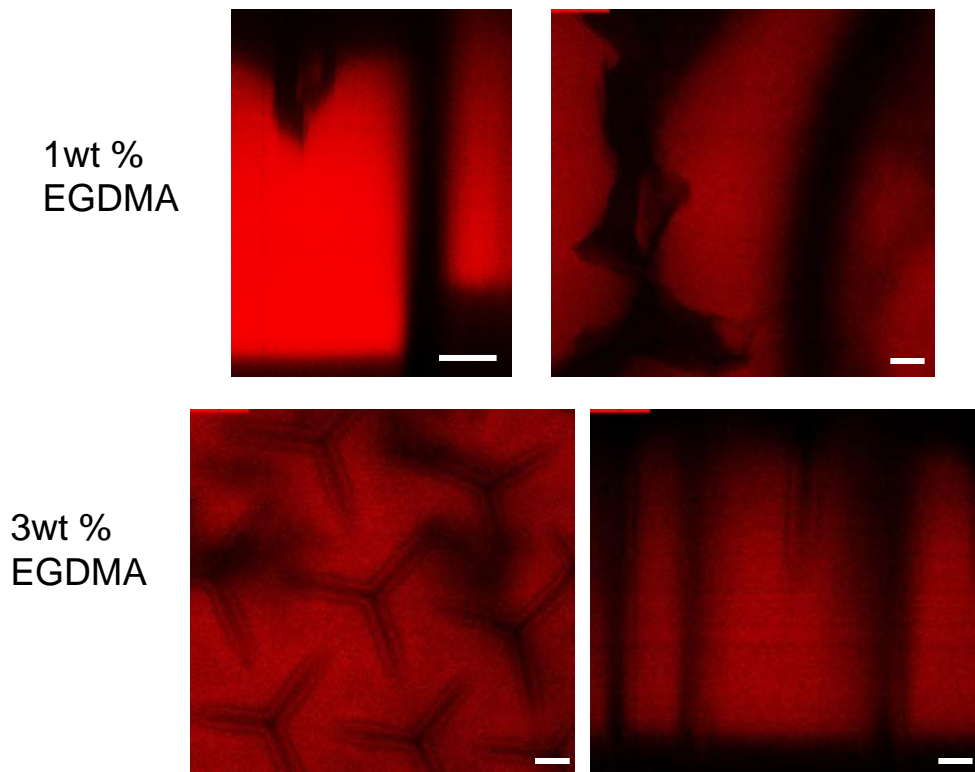


Figure S1. Confocal microscopy images of PHEMA films containing 1 wt% and 3 wt% EGDMA equilibrated in DMSO. Depth profile images (scanned at 1 μm steps) depicted that the length of fold reached the film-substrate interface leading to crack.