

RESEARCH ARTICLE

Southwest Asian cereal crops facilitated high-elevation agriculture in the central Tien Shan during the mid-third millennium BCE

Giedre Motuzaite Matuzeviciute ^{*}, Taylor R. Hermes , Basira Mir-Makhamad, Kubatbek Tabaldiev

Department of Archaeology, Vilnius University, Vilnius, Lithuania

* giedre.motuzaite@gmail.com



Abstract

We report the earliest and the most abundant archaeobotanical assemblage of southwest Asian grain crops from Early Bronze Age Central Asia, recovered from the Chap II site in Kyrgyzstan. The archaeobotanical remains consist of thousands of cultivated grains dating to the mid-late third millennium BCE. The recovery of cereal chaff and weeds suggest local cultivation at 2000 m.a.s.l., as crops first spread to the mountains of Central Asia. The site's inhabitants possibly cultivated two types of free-threshing wheats, glume wheats, and hulled and naked barleys. Highly compact caryopses of wheat and barley grains represent distinct morphotypes of cereals adapted to highland environments. While additional macrobotanical evidence is needed to confirm the presence of glume wheats at Chap II, the possible identification of glume wheats at Chap II may represent their most eastern distribution in Central Asia. Based on the presence of weed species, we argue that the past environment of Chap II was characterized by an open mountain landscape, where animal grazing likely took place, which may have been further modified by people irrigating agricultural fields. This research suggests that early farmers in the mountains of Central Asia cultivated compact morphotypes of southwest Asian crops during the initial eastward dispersal of agricultural technologies, which likely played a critical role in shaping montane adaptations and dynamic interaction networks between farming societies across highland and lowland cultivation zones.

OPEN ACCESS

Citation: Motuzaite Matuzeviciute G, Hermes TR, Mir-Makhamad B, Tabaldiev K (2020) Southwest Asian cereal crops facilitated high-elevation agriculture in the central Tien Shan during the mid-third millennium BCE. *PLoS ONE* 15(5): e0229372. <https://doi.org/10.1371/journal.pone.0229372>

Editor: Peter F. Biehl, University at Buffalo - The State University of New York, UNITED STATES

Received: February 3, 2020

Accepted: April 26, 2020

Published: May 20, 2020

Copyright: © 2020 Motuzaite Matuzeviciute et al. This is an open access article distributed under the terms of the [Creative Commons Attribution License](https://creativecommons.org/licenses/by/4.0/), which permits unrestricted use, distribution, and reproduction in any medium, provided the original author and source are credited.

Data Availability Statement: All relevant data are within the manuscript files.

Funding: This project has received funding from European Social Fund (project No 09.3.3-LMT-K-712-01-0002) under grant agreement with the Research Council of Lithuania (LMTLT). The funders had no role in study design, data collection and analysis, decision to publish, or preparation of the manuscript.

Introduction

Crops domesticated in various locations of Eurasia spread widely to new environments unlike those where they were initially cultivated. A number of crops originating in diverse landscapes of what is now present-day China, such as millets, hemp and buckwheat, spread to Europe, while southwestern Asian crops, such as wheat and barley, became important food sources across monsoonal Asia [1–4]. In the past decade, sampling for botanical remains during archaeological excavation has become routine, and subsequent analysis has transformed our understanding of the timing and routes of plant dispersals through Central Asia [5,6]. Along these lines, one of the most important discoveries at the forefront of this fluorescence in

Competing interests: The authors have declared that no competing interests exist.

archaeobotanical research in Central Asia was the earliest millet and wheat found together at the site of Begash in the Dzhungar Mountains of Kazakhstan dated to the end of the third millennium BCE [6,7]. Further work across China showed that during the first half of the second millennium BCE, wheat and barley became fully integrated into millet cultivation systems, thus transforming agricultural strategies and culinary traditions of communities in ancient China [3,8,9].

Many questions still remain, however, in understanding the status of domesticated crops in diverse societies across Eurasia during the earliest stages of multidirectional agricultural dispersals [1,10–12]. We especially have a poor understanding of what species and their morphotypes were moved and why [13,14], and whether different crop species took the same pathways across wide swaths of Asia [4]. An additional enigma is represented by the earliest broomcorn millet and bread wheat from Begash that were found mainly in a human cremation cist without crop processing chaff [7]. As this mortuary context does not inform whether these grains were consumed by people or locally cultivated, Frachetti [11] applied the term “seeds for the soul” to describe a cultural context of the seeds that was focused on ritual use. Recently, isotopic analysis employing incremental sampling of ovicaprid tooth enamel bioapatite for $\delta^{13}\text{C}$ and $\delta^{18}\text{O}$ values has shown that domesticated animals at Begash and the adjacent Dali site, the latter dating approximately 400 years earlier than the former, were foddered with millet during winter, suggesting that the westward spread of millet may have been tied to the expansion of pastoralist subsistence in western China [15]. While this research sheds light on the intersection of the ritual use and economic value of millets, the cultural status of southwest Asian crops for local Central Asian societies during this period of early crop dispersals remains unclear.

Whether wheat and barley constituted a singular crop package during their dispersal remains an important line of inquiry. Barley may have followed a southerly route along the Himalayan foothills to reach the present territory of China, as the current radiocarbon dates measured on wheat and barley are substantially different across China and the Inner Asian Mountain Corridor in Central Asia [4]. This insight suggests that more research is needed in order to resolve the mutual or distinct trajectories of wheat and barley moving eastward across mountainous regions. It has also been noted that the earliest wheat grains at archaeological sites in China and southeastern Central Asia are small and compact morphotypes that according to Liu et al. [13] were deliberately selected for cultivation, since diminutive and rounder wheats may have been better suited to the culinary traditions dominated by small-grained Chinese millets. On the contrary, other scholars have argued that the use of compact morphotypes of both wheat and barley recovered archaeologically in environmental margins, such as the highlands of Central Asia, is strongly influenced by environmental adaptation rather than culinary preferences [14,16–18]. Spengler [19] argues that highly compact wheats were selected due to their traits of drought-tolerance, reduced lodging, and increased yields.

It is important to emphasize that our current understanding about the initial stages of the Eurasian crop interchange across Central Asia is based on an extremely small quantity of plant remains recovered from only a few archaeological sites dated to the third millennium BCE, such as Begash and Tasbas in Kazakhstan, Sarazm in Tajikistan, South Anau in Turkmenistan and Tongtian Cave in western China [20–24]. For example, at Begash (2450–2100 cal BCE), cultivated crops are represented only by 13 compact free-threshing wheat grains, one barley grain, and 61 grains of broomcorn millet, at Tasbas (2840–2496 cal BCE) just five compact free-threshing wheat grains were found, in addition to 11 ambiguously identified “Cerealia” grains, while at Tongtian Cave (5200 and 3200 cal BP) only 25 barleys, 11 wheats, 8 foxtail and 11 broomcorn millets were recovered [17,23,24]. Such a small quantity of domesticated plant grains per site does not allow us to understand cultivation strategies, the relative importance of consumption versus ritual use, or the coherence of early agricultural packages.

Here, we present an early archaeobotanical assemblage consisting of southwest Asian crops recovered from the high-elevation Chap II site located in the central Tien Shan Mountains of Kyrgyzstan. The archaeobotanical samples represent the largest crop assemblage so far found at third millennium BCE sites between the Pamir, Tien Shan, and Altai Mountains, representing thousands of carbonized cereal remains. The assemblage reflects a compact morphotypes of wheat and barley grain that are characteristic to the earliest episodes of food globalization across Eurasia. Analysis of the accompanying weed taxa recovered from Chap II hints on the past ecology of cereal cultivation, suggesting that crops may have been grown with the aid of irrigation, while recovered a few chaff fragments might point towards local cultivation and processing.

The Chap II site

The Chap II site is located in the Kochkor valley of central Kyrgyzstan at 2000 m.a.s.l. ($42^{\circ} 10'51.7''$ N, $75^{\circ} 51'3.64''$ E). The site is situated inside the inundation of a small loess hill that protrudes from the foothills into the southeastern part of the 80-km long Kochkor valley (Fig 1). The archaeological remains of Chap II were recovered through excavation of the Chap I farmstead (1065–825 cal BCE), which was occupied during the transitional period from the Late Bronze Age to the Early Iron Age [25]. In previous years, a small 6.5x6.5 m trench was excavated that yielded a diverse assemblage of ceramic sherds, crop processing tools, domestic animal skeletal remains, carbonized remains of domesticated grains and chaff, which together reflect extensive agricultural and pastoralist activities by the inhabitants of the Chap I site [25].

Published under a CC BY license with credit from L.M. Rouse (DJI Mavic Pro).

The Chap II site is located stratigraphically below the occupational layers of Chap I and was excavated in the summer of 2019. Chap II is separated from the final occupational strata of Chap I by a *ca* 1-m thick loess deposit. The archaeological horizon of Chap II consists of two

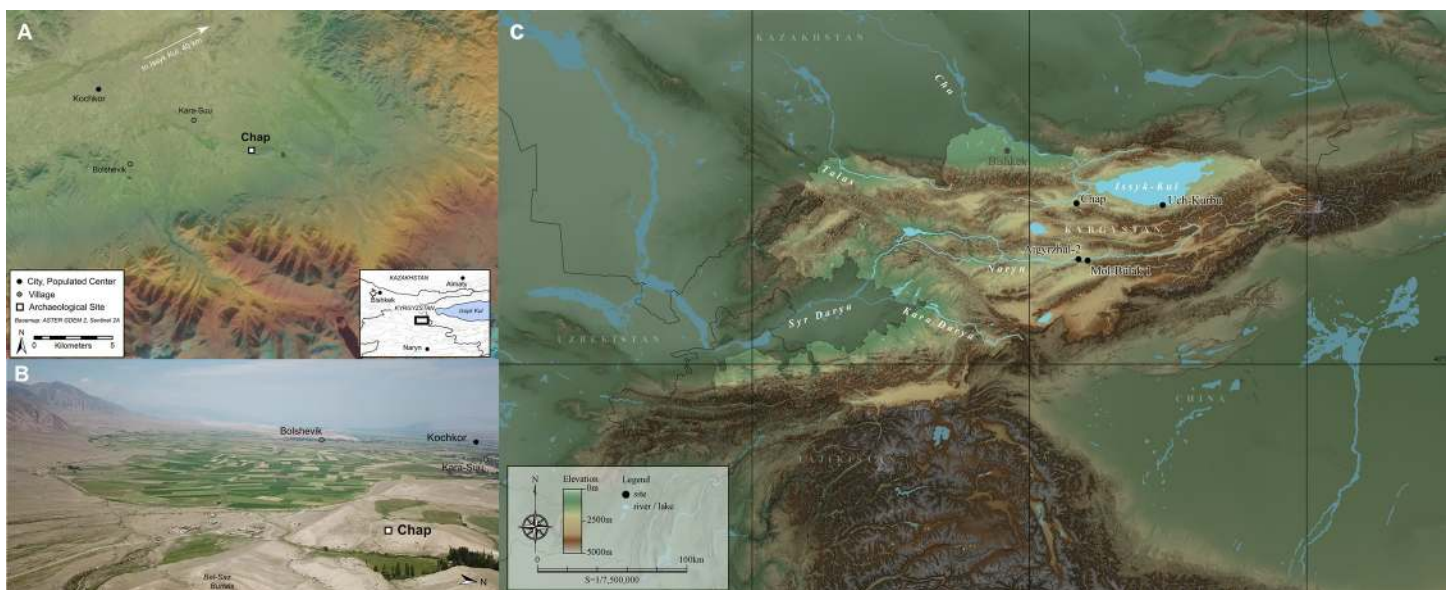


Fig 1. The geographical location of Chap II site. Bird's eye view (A) and aerial photograph of the Kochkor valley facing west (B), with location of the Chap site shown situated near the village of Karasu and Kochkor city. The Chap site in relation to other archaeobotanically analyzed sites in Kyrgyzstan (C). Image Copyright Attributions: (A) ASTER GDEM 2 is a product of Japan's Ministry of Economy, Trade, and Industry (METI) and NASA; Sentinel 2A imagery produced from ESA remote sensing data. (B) Image Credit: Published under a CC BY license with credit from L.M. Rouse (DJI Mavic Pro); (C) SRTM (NASA) for DEM, Digital Chart of the World (DCW) for water surface, Global Administrative Areas (GADM) for boundaries.

<https://doi.org/10.1371/journal.pone.0229372.g001>

ash pits (referred as pit 1 and pit 2), containing burned animal bones, one small fragment of pottery, and abundant carbonized plant remains. The pits are separated from one another by a sterile, 10-cm thick horizon; pit 1 is stratigraphically above pit 2, likely reflecting different formation events. The bottom portion of pit 2 reaches a depth of 260 cm above the modern surface and cradles a large, in-situ boulder. The deposition of pit 1 and 2 most likely were the result of discarded domestic waste, since the pits were not associated with discernable features that could be interpreted as being used for mortuary purposes or other commemorative practices.

Methods

Archaeobotanical analysis

All necessary permits were obtained for the described study, which complied with all relevant regulations. Archaeological excavation of Chap II and archaeobotanical sampling took place in August 2019 under Permit Form 3 to K.Sh. Tabaldiev (no. 5: 0040/02 05) issued by the Archaeological Field Committee of the Institute of History and Cultural Heritage at the National Academy of Sciences of the Kyrgyz Republic. No permits were required for exporting archaeobotanical plant remains used for the described study.

We followed the British Heritage strategy of macrobotanical sampling by collecting at least 40 L of sediment from two different areas of each archaeological context. This sediment volume produces a more comprehensive diversity of plant taxa in archaeological deposits than that yielded from sample volumes of 10 L, which in turn, better reflects human subsistence activities [26]. Bucket flotation using a 0.3 mm screen was used to float sediment samples. In total, 136 L of sediment from the two discernible ash pits were floated: 40 L from pit 1 and 96 L from pit 2. The flotation samples were analyzed archaeobotanically at the Bioarchaeology Research Centre of Vilnius University, where they are currently archived. The stereomicroscope and the reference collection of Bioarchaeology Research Centre, including botanical seed atlases, were used to identify and quantify plant remains [27,28].

Radiocarbon dating

Radiocarbon dating of carbonized grains by accelerator mass spectrometer (AMS) ^{14}C dating was performed at the 14CHRONO Centre for Climate, the Environment, and Chronology, Queen's University Belfast. Three cereal caryopses collected from flotation samples were selected for direct dating: two wheat grains from pit 1 and one barley grain from pit 2. Radiocarbon determinations were calibrated using IntCal13 calibration curve [29], which were modelled in OxCal v. 4.3 [30] according to their stratigraphic positions relative to previously identified occupational layers yielding ^{14}C dates of domesticated grains recovered from Chap I previously reported by Motuzaitė Matuzevičiūtė et al. [25].

Results

Cultivated plants

The archaeobotanical assemblages of pits 1 and 2 are dominated by grains and chaff of free-threshing and glume wheats and also barleys of naked and hulled varieties. In total, 661 free-threshing wheat caryopses, including whole and slightly fragmented grains, were recovered. The free-threshing wheat grains have highly compact morphotypes with strikingly large variation in grain size, ranging from 6 to 2.4 mm in length, 4.2 to 1.8 mm in breadth, and 3.4 to 1.2 mm in depth. The majority of wheat grains probably belong to two free-threshing species of *T. durum/turgidum* and *T. aestivum* (Fig 2). The grains of those species were counted together,

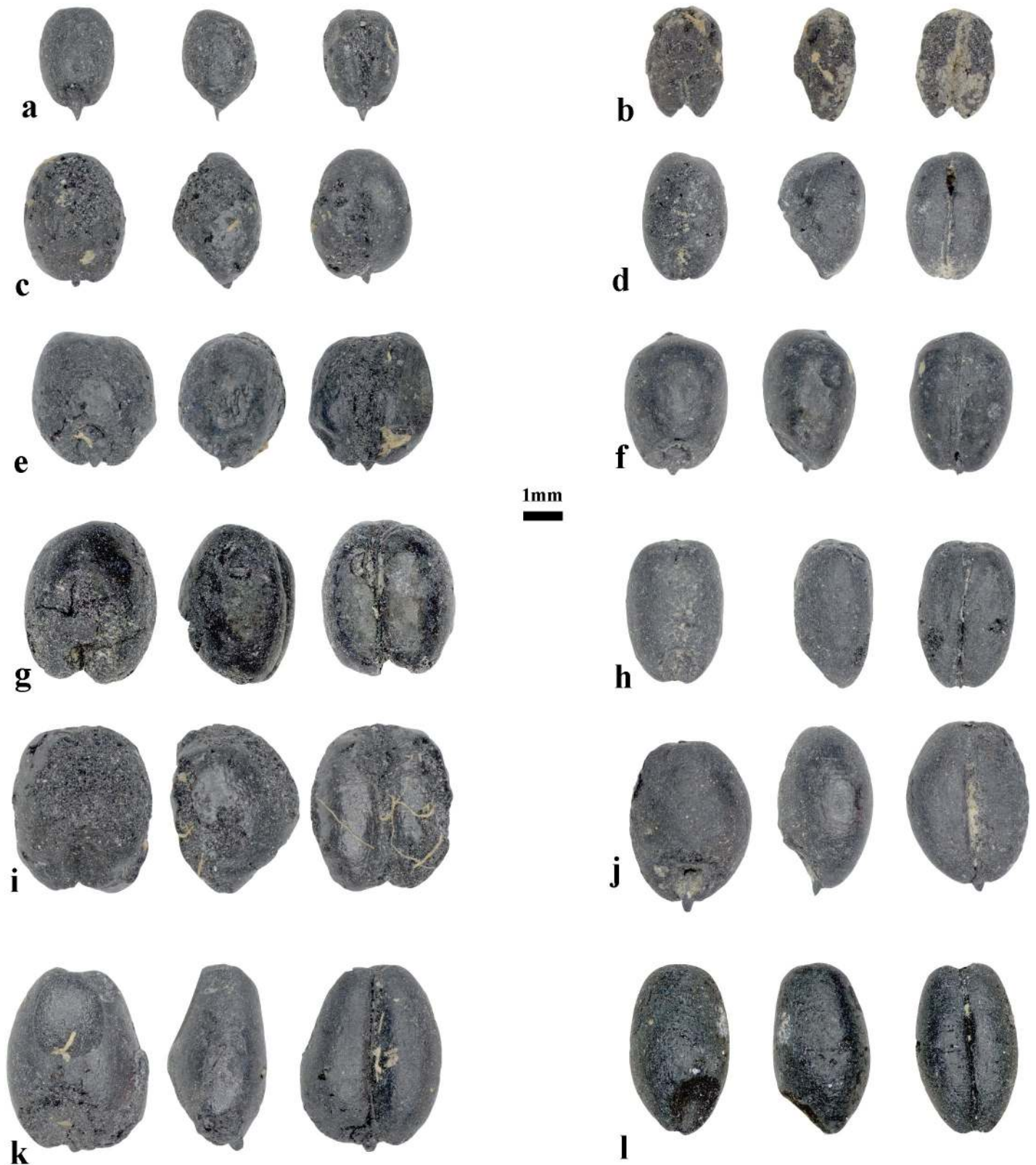


Fig 2. The compact wheat caryopses from the Chap II site. The images of wheat show substantial size variation.

<https://doi.org/10.1371/journal.pone.0229372.g002>

yet the presence of one rachis internode belonging to a hexaploid wheat and one to a tetraploid wheat hints that the assemblage possibly contains both species (Table 1 and Fig 3A and 3B). The rachis internode that was attributed to tetraploid wheat at Chap II site has straight side contours where the maximum width of rachis is located in the upper portion; this internode also contains distinct swelling below the glume insertion, while the rachis internode of the hexaploidy wheat are curved or shield-shape, and the maximum rachis width is located above the middle portion; this internode also lacks swelling below the glumes and contains striations [28,31,32].

Sixteen grains of possible glume wheat were attributed to emmer wheat (cf. *T. dicoccum*). The grains of possibly hulled wheat were distinct from the free-threshing wheat grains, based on the grains having narrower widths and also exhibiting shallow, elongated and blunted apices and embryo notches, medium dorsal ridges (keel), and slight deflections on the ventral side (Fig 3D). Although, the recovered grains do not represent a typical glume wheat exhibiting a high dorsal ridge and glume lines, we took into account the possible charring effect that

Table 1. Archaeobotanical identifications from Chap II.

	Family Taxa	Context	Pit 1	Pit 2	Total
Domesticated	Poaceae	<i>Triticum aestivum/durum/turgidum</i>	118	204	322
		<i>Triticum aestivum/durum/turgidum</i> (fragments)	81	258	339
		<i>Triticum aestivum</i> (rachis internode)		1	1
		<i>T. cf. durum/turgidum</i> (rachis internode)		1	1
		cf. <i>Triticum dicoccum</i>	5	11	16
		cf. <i>Triticum cf. dicoccum</i> (rachis internodes)		1	1
		<i>Hordeum vulgare</i> (naked)	125	132	257
		<i>Hordeum vulgare</i> (hulled)	2	1	3
		<i>Hordeum</i> sp. (fragments)	106	116	222
		<i>Cerealia</i> (fragments)	688	1361	2049
Wild	Amaranthaceae	<i>Chenopodium</i> sp.	280	480	760
		Amaranthaceae	4	2	6
		<i>Salsola kali</i>	12	18	29
	Caryophyllaceae	<i>Cerastium</i> sp.		2	2
		<i>Vaccaria</i> sp.		2	1
	Cyperaceae	<i>Carex</i> sp. (five types)	209	449	658
	Fabaceae	<i>Pisum/Vicia</i> sp.		1	1
		<i>Trifolium/Melilotus</i> sp.	2	5	7
		<i>Medicago/Trifolium</i> sp.		6	6
		<i>Hippocrepis comosa</i>		1	1
	Poaceae	<i>Agrostis</i> sp.	1		1
		<i>Stipa</i> type		2	2
		<i>Bromus</i> sp.	5	1	6
		Poaceae		1	1
	Polygonaceae	<i>Polygonum</i> sp.		5	5
	Ranunculaceae	<i>Ranunculus</i> sp.		2	1
	Rosaceae	<i>Potentilla</i> sp.		1	1
Rubiaceae	<i>Galium</i> sp.	14	24	38	
Lamiaceae	cf. <i>Thymus</i> sp.		1	1	
	Bread/food remains		9	25	34

<https://doi.org/10.1371/journal.pone.0229372.t001>

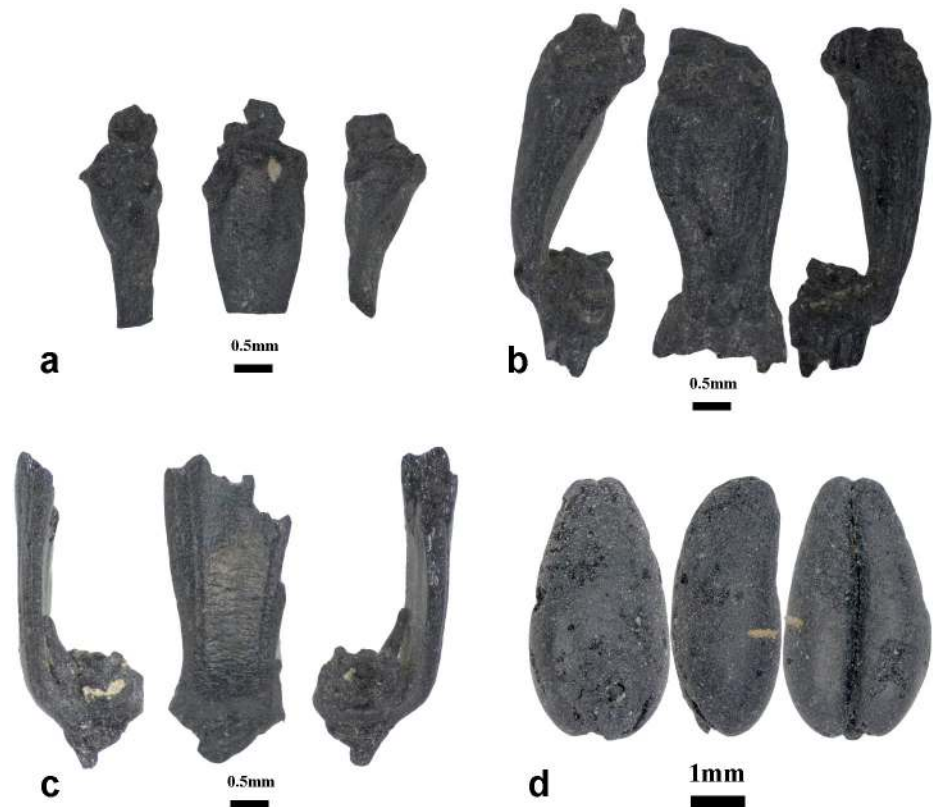


Fig 3. Wheat chaff and grain images from Chap II site. Rachis internodes of free-threshing wheat (*Triticum durum/turgidum*) (a), *Triticum cf. aestivum* (b); Glume base and grains of probable glume wheat (cf. *Triticum dicoccum*) (c,d).

<https://doi.org/10.1371/journal.pone.0229372.g003>

causes emmer grains to increase in roundness when exposed to high temperatures [33], making the dorsal ridge less pronounced. The recovery of one fragment of a glume base shows a possible presence of glume wheat in the archaeobotanical assemblage of Chap II (Fig 3C).

The majority of recovered barleys belong to highly compacted varieties of *Hordeum vulgare* var. *nudum*, totaling 257 grains. As observed in wheat, the naked barley grains also vary widely in size and shape, ranging from 6.4 to 2.7 mm in length, 4.3 to 1.8 mm in breadth, and 3.5 to 1.2 mm in depth (Fig 4). Surprisingly, the measurements of barley are similar to the measurements of wheat. In fact, some of the barley grains were so strongly compacted, that differentiating them from wheat was only possible from the lateral view (Fig 4). Three barley grains were identified to hulled barley varieties. At Chap II, most barley remains are represented by symmetrical grains, probably belonging to two- or four-row varieties. Counting partial and whole grains together, both pits yielded 482 grains of barley. Due to fragmentation, 2040 grain remains were identified as “Cerealia” type.

It was surprising that no remains of East Asian crops were recovered from the flotation samples, such as broomcorn or foxtails millet, which were present at Chap I [25]. Interestingly, 34 carbonized food fragments, up to 9.5 mm in size, were also identified. These remains were characterized by porous or amorphous-like matrices and a burned, lumpy conglomerate, some containing cereal bran fragments. These charred food pieces probably represent the remains of bread or porridge. The food fragments were not analyzed in this study but will be the subject of future research.

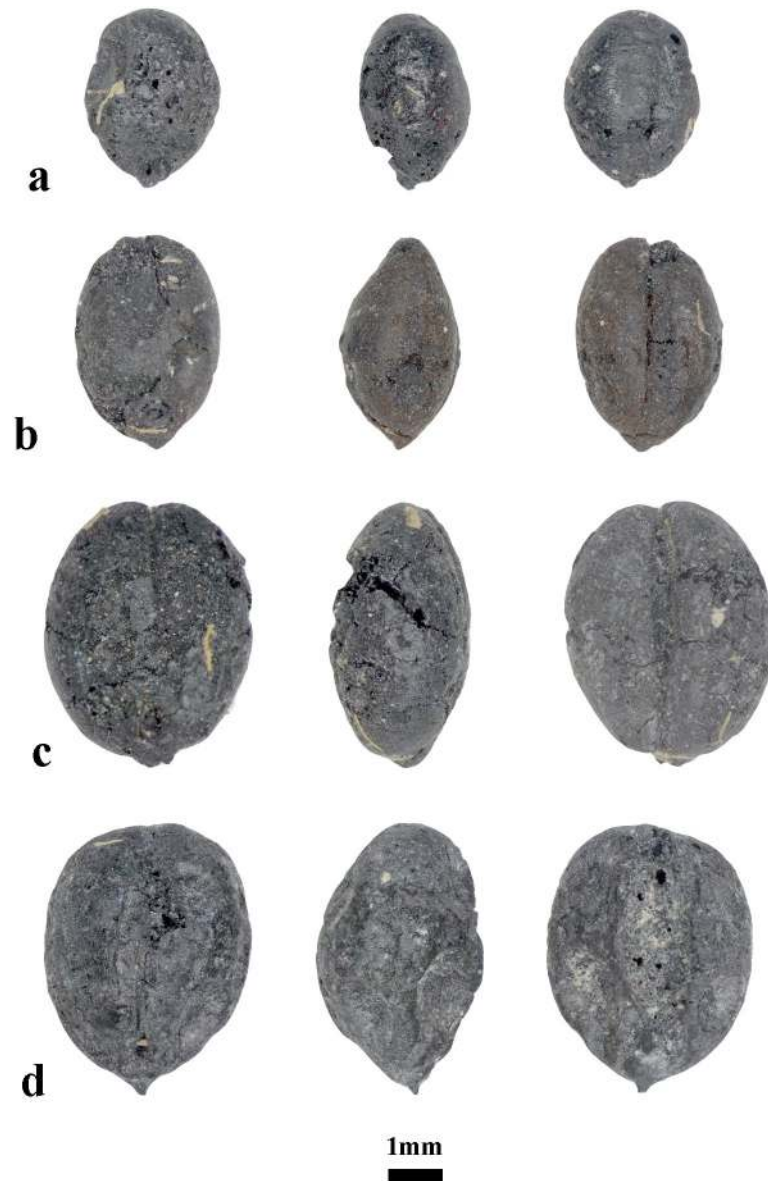


Fig 4. Barley at from Chap II site. Highly compact morphotypes of *Hordeum vulgare* var *nudum* (naked barley).

<https://doi.org/10.1371/journal.pone.0229372.g004>

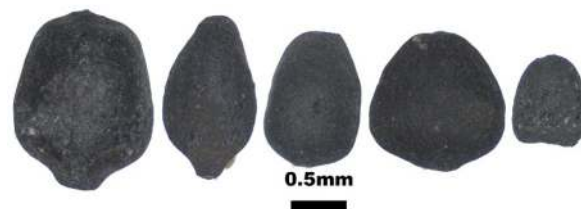


Fig 5. The seeds of sedges at Chap II site. The five types of *Carex* sp. (sedges) represent one of the most dominant wild plant species.

<https://doi.org/10.1371/journal.pone.0229372.g005>

Wild plants

The most common seed remains in the wild plant assemblage were from *Chenopodium* sp. (goosefoot), represented by 760 carbonized grains (Table 1). *Chenopodium* plants normally represent ruderal weeds that grow in nitrogen-rich, former domestic spaces [34,35]. The second most abundant wild seeds were from *Carex* sp. (sedges), totaling 658 carbonized grains (Table 1). Five morphotypes of *Carex* caryopses were identified, which likely all belong to different species (Fig 5). Most of the species of sedges grow in wetland ecosystems [36]. The presence of sedge seeds among the domesticated grains at Chap II could mean that crops were grown in close proximity to sedges, possibly along irrigated channels or mountain streams. The other wild species are represented by smaller seed counts. The majority of them reflect open meadow, arable and possibly irrigated landscapes, such as *Salsola kali*, *Polygonum* sp. or *Galium* sp. (Table 1). Moreover, the majority of taxa are not found in the undergrowth of forests [37,38], which helps illustrate a local environment surrounding Chap II that was devoid of trees.

Radiocarbon dating

Three radiocarbon determinations were measured on two individual wheat grains from pit 1 and one individual barley grain from pit 2. Showing consistency with the relative stratigraphic position of pit 2 below pit 1, the modelled date of the barley grain from pit 2 is 2467–2292 cal BCE, while the wheat grains from pit 1 together provide a modelled date of 2402–2047 cal BCE (Table 2 and Fig 6). Overall, the two pits date to nearly 1500 years before the occupation of Chap I, raising the possibility that the site was abandoned for a considerable amount of time during the second millennium BCE (Figs 6 and 7).

Discussion

Dated to the middle to second half of the third millennium cal BCE, the archaeobotanical assemblage of Chap II represents the earliest and the most abundant assemblage of cereal and wild plant macrobotanical remains in eastern Central Asia and is further notable for its recovery at 2000 m.a.s.l. The early co-occurrence of both wheat and barley in similar proportions at Chap II suggests that these crops spread into the highlands of Central Asia as a package, which helps resolve some issues with the chronological disconnect for these crops across the Inner Asian Mountain Corridor, central China, and south Asia previously identified by Liu et al. [4]. This scenario indicates that people engaging in plant cultivation in the Tien Shan were equally invested in varieties of wheat and barley that already had been adapted to high elevations, where short growing seasons and low temperatures impose considerable difficulties for farmers. The archaeobotanical assemblage, reflected in compact grain morphotypes and large variation in cereal grain sizes, present at Chap II illustrates subsistence strategies that likely favored

Table 2. AMS radiocarbon dates measured on macrobotanical remains recovered from Chap II. Previously published radiocarbon dates taken on domesticated grains from Begash [7] and Tasbas [23] are also shown to help contextualize the chronology of Chap II.

Site	Dated material	Context	Lab number	¹⁴ C age BP	±	Calibrated age (cal. BCE 95.4% range)	Modelled age (cal BCE 95.4% range)	Modelled mean age (cal BCE)
Chap II	Wheat	Pit 1	UBA-41509	3754	33	2284–2038	2294–2047	2195
Chap II	Wheat	Pit 1	UBA-41508	3857	31	2462–2284	2402–2204	2299
Chap II	Barley	Pit 2	UBA-41507	3899	30	2469–2297	2467–2292	2371
Begash ¹	Wheat & broomcorn millet	Burial cist	Beta-266458	3840	40	2460–2150	-	-
Tasbas ²	Wheat	Burial cist	Beta-391200	4010	30	2617–2468	-	-

<https://doi.org/10.1371/journal.pone.0229372.t002>

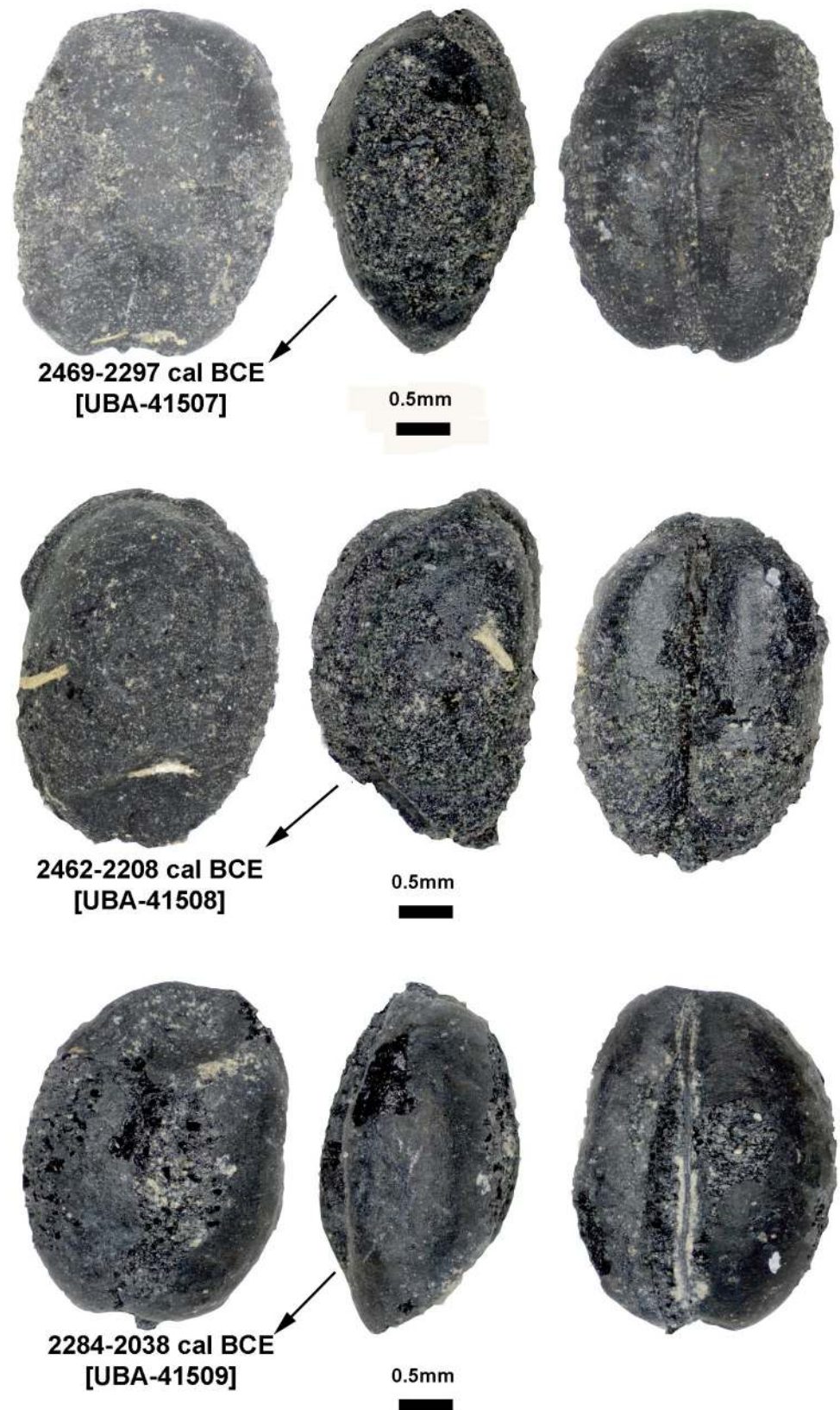


Fig 6. The images of directly radiocarbon dated grain crops from Chap II site. Calibrated dates are listed next to the naked barley from pit 2 (top) and free-threshing wheat grains (middle and bottom) from pit 1.

<https://doi.org/10.1371/journal.pone.0229372.g006>

OxCal v4.3.2 Bronk Ramsey (2017); r:5 IntCal13 atmospheric curve (Reimer et al 2013)

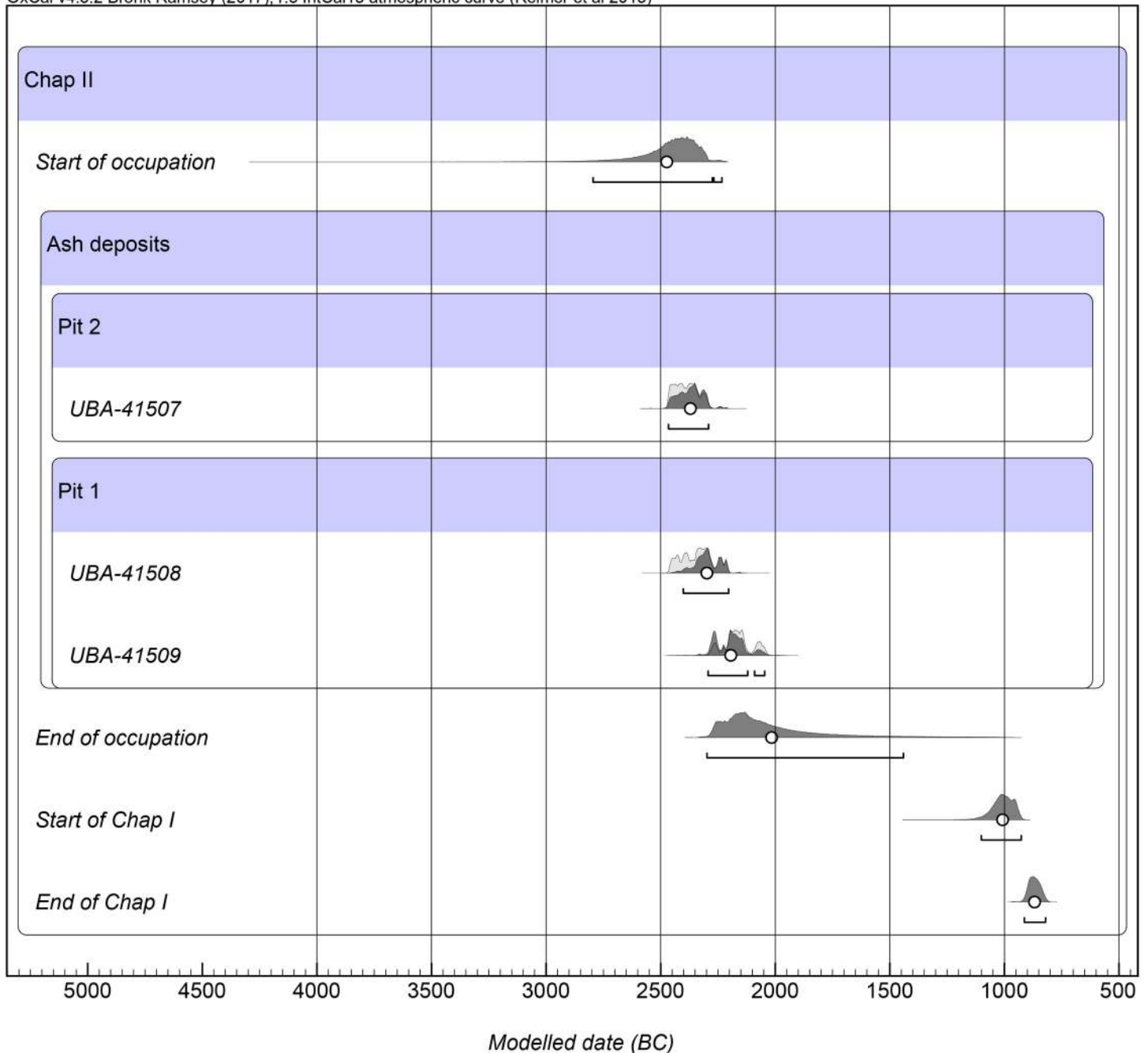


Fig 7. Radiocarbon chronology for Chap II. Modelled radiocarbon dates measured on wheat barley grains from Chap II in relation to the occupational period of Chap I previously reported by Motuzaite Matuzeviciute et al. [25].

<https://doi.org/10.1371/journal.pone.0229372.g007>

agricultural resilience by safeguarding crop production from extreme and uncertain weather conditions characteristic of montane environments. However, it is notable that the archaeobotanical assemblage of Chap II lacks Chinese millets, which provide agriculturalists with additional flexibility in production on account of millets having short growing seasons and drought tolerance. The fact that broomcorn millet was recovered at Begash located at 900 m.a.

s.l. [7] and likely cultivated there and at Dali located at 1500 m.a.s.l. [15], both in the neighboring region of Semirech'ye (southeastern Kazakhstan), had previously implied that millet may have also reached the central Tien Shan by the end of the third millennium BCE. The definitive absence of millet at Chap II may indicate that 1) interaction networks reaching into the northern stretches of the Inner Asian Mountain Corridor did not connect people living in the central Tien Shan or 2) an elevational ceiling for successful cultivation below 2000 m.a.s.l. existed for millets in the third millennium BCE. During the occupation of Chap I 1500 years later, millets formed an important component of the local crop repertoire, potentially overcoming prior environmental constraints [39].

The archaeobotanical assemblage at Chap II is dominated by domesticates of southwest Asian origin: free-threshing wheats (possibly *T. turgidum/durum* and *T. aestivum*) and possibly both naked and hulled barleys. The free-threshing wheat grains correspond to compact wheat forms noted in the Dzhungar Mountains of Semirech'ye [6,17,18]. Furthermore, previous archaeobotanical research in Kyrgyzstan identified compact wheat forms at the sites of Uch Kurbu, Aigyrzhal-2, and Mol Bulak located in the highland regions (Fig 1C) [14,16], which suggests that compact wheat forms could have been selected for their adaptive properties to grow in mountainous environments. Other researchers have also noted the suitability of compact wheats for agriculturalists in marginal environments of south and east Asia, such as monsoonal areas of India and the highlands of the Tibetan plateau [13,40]. It has been argued that, compared to non-compact forms, compact varieties of wheat exhibit greater standing power against extreme weather conditions, such as strong winds and intense rains that can cause lodging and stem breakage [14]. In addition to compact forms, large variation in wheat grain size was also noted for the wheats at Chap II, ranging from 6.0 to 2.4 mm in length, 4.2 to 1.8 mm in breadth and 3.4 to 1.2 mm in depth. This wide variation in grain size may be the result of environmental factors that crop plants were exposed to during grain development. Previous experimental research has shown that plants experiencing physiological stress from differences in water availability, ambient temperature, or amount of nutrients during grain filling resulted in grain size diminution, due to interference in the deposition of carbohydrates in the grains [41–46]. In addition, Reed [47] also showed that grains from a single ear of spelt wheat exhibited a wide variety of sizes, indicating that variability in grain size can also be due to heterogeneous ripening times of grains on the ear.

It is noteworthy to point out that the biometrical data for wheat grains recovered from Bronze and Iron Age sites in Kyrgyzstan substantially overlap with that of wheat grains from second millennium BCE sites in north western China [13,14]. In eastern regions of monsoonal China, however, ancient wheat grains show dramatically smaller sizes and follow a more uniform size distribution, which suggest that the eastward spread of wheat was associated with an overall convergence to diminutive grains [13]. Further research is needed in order to understand whether the reduction in wheat grain size in monsoonal China was influenced by climate, human choice, or the geographical origins of particular wheat morphotypes.

The presence of two types of free-threshing wheat rachis internodes (Fig 3) and the large diversity of wheat grain morphotypes found at Chap II and at other sites in Kyrgyzstan, such as Argyrzhal-2 and Uch-Kurbu [16], suggest that probably both tetraploid and hexaploid free-threshing wheat were cultivated. In China, archaeobotanical research mainly reports grain morphology, thus offering opportunities for future analysis of rachis internodes to test whether both tetraploid and hexaploid free-threshing wheats were cultivated there and, possibly, to resolve the timing and dispersal routes of these species.

The discovery of possible glume wheat at Chap II site during early phases of southwest Asian crop dispersals to the central Tien Shan is also important for understanding the limits of its eastward spread. Current evidence suggests that the cultivation of glume wheat did not

reach the present-day territory of China at the initial stage of southwestern crop dispersal during the third-second millennia BCE. The free-threshing wheats were selected instead of glume wheats as they dispersed eastwards from centers of domestication in southwest Asia [48]. Most ancient Chinese wheat remains are hexaploid free-threshing *Triticum aestivum* [9,49,50], in contrast to the types of wheat recovered from Neolithic and Bronze Age sites in southwestern Asia, where agriculture was mainly based on glume wheat [48].

A review by Stevens et al. [48] reported modern glume wheat varieties (*T. aestivum* var. *tibetianum* JZ Shao) in western China with limited distribution in Yunnan, Tibet, and Xinjiang, in addition to a glume wheat varieties in Yunnan (*Triticum aestivum* subsp. *yunnanense* King ex SL Chen). Notably, the glume base of glume wheat recovered from Chap II does not resemble that of typical glume wheat belonging to *T. dicoccum* found in Europe. Comparing the glume wheat internode bases from Chap II with those previously reported at the *Linearbandkeramik* site of Ratniv-2 site located in western Ukraine [51], the curve between glume and glume base at Chap II is straighter and *ca* 25% larger. Therefore, glume wheat at Chap II could represent local Central Asian morphotypes or subspecies, such as currently known from Chinese (see above). A few grains of glume wheats (but no chaff) have also been recently reported from Kanispur site in Kashmir, dating by associated charcoals to a similar period as Chap II in the third millennium BCE [52]. Further research is needed to understand why glume wheats were filtered out of crop repertoires of ancient Central Asian communities and did not disperse to China.

The archaeobotanical assemblage of Chap II is dominated by naked varieties of barley, which became commonly cultivated across the Tibetan plateau [40,53]. The reason for the dominance of naked forms of barley in the highlands of Asia is not clear, but it has been suggested that cultural preference was the main factor for selecting naked over hulled barleys [53]. However, naked barley is better adopted to highland environments, especially those characterized by strong continental climates [54,55]. In mountain cultivation areas, naked varieties produce higher grain yields, generate more overall biomass, and mature faster than hulled varieties [56].

The finding of highly compacted barley at Chap II is also particularly interesting as it reveals what compact morphotypes were selected by early farmers inhabiting mountainous landscapes and gives insight on crop adaptation in these highland regions during the third millennium BCE. Future studies comparing metrical variation of lowland and highland barley grains and chaff could lead to a better understanding of how certain barley morphotypes change in response to elevation and whether certain forms were more advantageous in particular environmental niches. Knüpfner [55] notes that landraces of modern naked barleys collected from the high-mountain regions of Central Asia are short with thick, lodging straw and have grains that are more compact and spherical than those of taller barley varieties.

It has been suggested that plump forms of wheat and six-row naked barley, in particular, are water-demanding crops that likely required irrigation or high amounts of rainfall for successful cultivation in western Central Asia and the Near East [57]. The possibility that the inhabitants of Chap II used irrigation in the Kochkor valley cannot also be ruled out. It is plausible that irrigation technologies spread together with the first farming communities to the central Tien Shan and further eastwards to China [58]. The occupation of Chap II during the second half of the third millennium BCE coincides with the Subboreal climate period of dry and cold conditions [59,60]. People may have been motivated to seek out high-mountain water sources, such as perennial springs, when the lowlands were characterized by water shortages due to glacial melt waters decreasing as precipitation diminished and ice sheets expanded. Moreover, herding domesticated animals would have also motivated people to seek highland settlements near rich, montane pastures, where they could have integrated pastoralist and

plant cultivation strategies through foddering with agricultural byproducts and dung manuring [15]. One of the dominant species of wild plants at Chap II is *Carex* sp. (sedges), that normally grow in wetland environments, which suggests widespread availability of water-saturated soils. Although the archaeological deposition of sedges at Chap II may be the result of animal foddering or craft production, the high abundance of *Carex* sp. seeds points towards well-watered fields. The finding of sedges among cultivated crops at the Bronze Age Kültepe-Kanesh archaeological site in Turkey led researchers there to suggest that crops were watered by irrigation channels [61]. Currently, sedges grow along modern irrigation channels in the Kochkor valley. At Chap II, the fields were probably located in close proximity to water sources, either irrigated channels or natural streams that could be easily redirected. Stable isotopic analysis of the grains recovered at Chap II is needed to examine watering regimes for local plant cultivation, as has been previously applied elsewhere [62,63].

Wild plants and ruderal weeds recovered from Chap II are dominated by *Chenopodium* sp., which together with *Galium* sp., normally inhabit nitrogen-rich domestic settings modified by intensive pastoralist herding and corralling [34]. The few faunal skeletal remains recovered from Chap II (~25 specimens) likely represent domesticated ruminant species. The presence of domesticated sheep and goats dated to ~2700 cal BCE were identified by mitochondrial DNA at Dali located in the Dzhungar Mountains of southeastern Kazakhstan [15]. It is possible that pastoralist subsistence spread northward through the Tien Shan mountains along the Inner Asian Mountain Corridor earlier than the occupation of Chap II [64,65], although additional excavation of a wider area of Chap II will aid in the recovery of additional faunal specimens. Judging from the rest of the wild plant and weed taxa, it is difficult to be certain whether the recovered crops from Chap II were sown in the autumn or spring, or precisely reflect that the landscape was used for crop cultivation, as not all plants were identified to species. In addition, some taxa, such as *Chenopodium* sp. or *Galium* spp., could have entered the archaeobotanical assemblage via dung burning [34,66]. Nevertheless, as reflected by both wild and domesticated plant taxa the subsistence strategies at Chap II during the second half of the third millennium BCE likely involved intensive investment in plant cultivation with varied cultivation schedules organized within diverse ecological niches, in addition to people engaging in pastoralist herding involving flexible mobility strategies.

Conclusions

The Chap II site yielded the largest crop assemblage dated to the third millennium BCE between Pamir, Tien Shan, and Altai mountains, comprising thousands of cultivated cereal remains with the presence of possibly two species of free-threshing wheat, glume wheat, and hulled and naked barley. Radiocarbon determinations derived directly from wheat and barley grains show that Chap II was occupied between 2467–2047 cal BCE. Analysis of the accompanying weed taxa recovered from Chap II hints at an open landscape where pastoralist herding likely took place. The dominance of wetland plants in the assemblage also suggests that cultivated crops may have been grown in well-watered possibly irrigated fields, which would imply that this technology spread hand in hand with the cultivation of southwest Asian crops. Finally, we can conclude that the earliest grain crop package constituted of compact barley and wheat morphotypes that gave them advantage to survive high altitude mountainous climate.

Acknowledgments

We would like to acknowledge the 14Chrono Centre at Queen's University Belfast for providing radiocarbon dates at the collaborator's rate. We are grateful to Lynne Rouse for her help during 2019 field season in Kyrgyzstan.

Author Contributions

Conceptualization: Giedre Motuzaitė Matuzevičiūtė, Taylor R. Hermes, Basira Mir-Makhamad.

Formal analysis: Giedre Motuzaitė Matuzevičiūtė, Taylor R. Hermes.

Funding acquisition: Giedre Motuzaitė Matuzevičiūtė.

Investigation: Giedre Motuzaitė Matuzevičiūtė, Taylor R. Hermes.

Methodology: Giedre Motuzaitė Matuzevičiūtė, Taylor R. Hermes, Basira Mir-Makhamad.

Project administration: Giedre Motuzaitė Matuzevičiūtė.

Resources: Kubatbek Tabaldiev.

Supervision: Giedre Motuzaitė Matuzevičiūtė.

Validation: Giedre Motuzaitė Matuzevičiūtė.

Visualization: Taylor R. Hermes, Basira Mir-Makhamad.

Writing – original draft: Giedre Motuzaitė Matuzevičiūtė.

Writing – review & editing: Giedre Motuzaitė Matuzevičiūtė, Taylor R. Hermes.

References

1. Jones M, Hunt H, Lightfoot E, Lister D, Liu X, Motuzaitė-Matuzevičiūtė G. Food globalization in prehistory. *World Archaeol.* 2011; 43: 665–675. <https://doi.org/10.1080/00438243.2011.624764>
2. Jones MK. Between Fertile Crescents: minor grain crops and agricultural origins. In: Jones MK, editor. *Traces of ancestry: studies in honour of Colin Renfrew.* Cambridge: McDonald Institute for Archaeological Research; 2004. pp. 127–35.
3. Jones M, Harriet H, Kneale C, Lightfoot E, Lister D, Liu X, et al. Food globalisation in prehistory: the agrarian foundation of an interconnected continent. *J Br Acad.* 2016. <https://doi.org/10.5871/jba/004.073>
4. Liu X, Lister DL, Zhao Z, Petrie CA, Zeng X, Jones PJ, et al. Journey to the east: Diverse routes and variable flowering times for wheat and barley en route to prehistoric China. *PLOS ONE.* 2017; 12: e0187405. <https://doi.org/10.1371/journal.pone.0187405> PMID: 29095896
5. Liu X, Jones PJ, Matuzevičiūtė Matuzevičiūtė G, Hunt HV, Lister DL, An T, et al. From ecological opportunism to multi-cropping: Mapping food globalisation in prehistory. *Quat Sci Rev.* 2019; 206: 21–28. <https://doi.org/10.1016/j.quascirev.2018.12.017>
6. Spengler RN, Frachetti MD, Doumani P, Rouse L, Cerasetti B, Bullion E, et al. Early agriculture and crop transmission among Bronze Age mobile pastoralists of Central Asia. *Proc R Soc B.* 2014; 281: 1–7. <https://doi.org/10.1098/rspb.2013.3382> PMID: 24695428
7. Frachetti MD, Spengler RN, Fritz GJ, Mar'yashev AN. Earliest direct evidence for broomcorn millet and wheat in the central Eurasian steppe region. *Antiquity.* 2010; 84: 993–1010. <https://doi.org/10.1017/S0003598X0006703X>
8. Long T, Leipe C, Jin G, Wagner M, Guo R, Schröder O, et al. The early history of wheat in China from 14C dating and Bayesian chronological modelling. *Nat Plants.* 2018; 4: 272–279. <https://doi.org/10.1038/s41477-018-0141-x> PMID: 29725102
9. Flad R, Shuicheng L, Xiaohong W, Zhijun Z. Early wheat in China: Results from new studies at Donghuishan in the Hexi Corridor. *The Holocene.* 2010; 20: 955–965. <https://doi.org/10.1177/0959683609358914>
10. Boivin N, Fuller DQ, Crowther A. Old World globalization and the Columbian exchange: comparison and contrast. *World Archaeol.* 2012; 44: 452–469. <https://doi.org/10.1080/00438243.2012.729404>
11. Frachetti M. Seeds for the soul: ideology and diffusion of domesticated grains across Inner Asia. In: Victor MH, Hickman J. *Reconfiguring the Silk Road: New Research on East–West Exchange in Antiquity.* Philadelphia, PA: University of Pennsylvania Museum of Archaeology and Anthropology; 2014. pp. 41–54.

12. Liu X, Lightfoot E, O'Connell TC, Wang H, Li S, Zhou L, et al. From necessity to choice: dietary revolutions in west China in the second millennium BC. *World Archaeol.* 2014; 46: 661–680. <https://doi.org/10.1080/00438243.2014.953706>
13. Liu X, Lister DL, Zhao Z, Staff RA, Jones PJ, Zhou L, et al. The virtues of small grain size: Potential pathways to a distinguishing feature of Asian wheats. *Quat Int.* 2016; 426: 107–119. <https://doi.org/10.1016/j.quaint.2016.02.059>
14. Motuzaite Matuzeviciute G, Abdykanova A, Kume S, Nishiaki Y, Tabaldiev K. The effect of geographical margins on cereal grain size variation: Case study for highlands of Kyrgyzstan. *J Archaeol Sci Rep.* 2018; 20: 400–410. <https://doi.org/10.1016/j.jasrep.2018.04.037>
15. Hermes TR, Frachetti MD, Doumani Dupuy PN, Mar'yashev A, Nebel A, Makarewicz CA. Early integration of pastoralism and millet cultivation in Bronze Age Eurasia. *Proc R Soc B.* 2019; 286: 20191273. <https://doi.org/10.1098/rspb.2019.1273> PMID: 31480978
16. Motuzaite Matuzeviciute G, Preece R, Wang S, Colominas L, Ohnuma K, Kume S, et al. Ecology and subsistence at the Mesolithic and Bronze Age site of Aigyrzhal-2, Naryn valley, Kyrgyzstan. *Quat Int.* 2015; 437: 35–49. <https://doi.org/10.1016/j.quaint.2015.06.065>
17. Spengler RN, Frachetti MD, Doumani PN. Late Bronze Age agriculture at Tasbas in the Dzhungar Mountains of eastern Kazakhstan. *Quat Int.* 2014; 438: 147–157. <https://doi.org/10.1016/j.quaint.2014.03.039>
18. Spengler RN, Miller NF, Neef R, Tourtellotte PA, Chang C. Linking agriculture and exchange to social developments of the Central Asian Iron Age. *J Anthropol Archaeol.* 2017; 48: 295–308. <https://doi.org/10.1016/j.jaa.2017.09.002>
19. Spengler RN. *Fruit from the Sands: The Silk Road Origins of the Foods We Eat.* First edition. Oakland, California: University of California Press; 2019.
20. Miller NF. Agricultural development in western Central Asia in the Chalcolithic and Bronze Ages. *Veg Hist Archaeobotany.* 1999; 8: 13–19. <https://doi.org/10.1007/BF02042837>
21. Spengler RN, de Nigris I, Cerasetti B, Carra M, Rouse LM. The breadth of dietary economy in Bronze Age Central Asia: Case study from Adji Kui 1 in the Murghab region of Turkmenistan. *J Archaeol Sci Rep.* 2018; 22: 372–381. <https://doi.org/10.1016/j.jasrep.2016.03.029>
22. Spengler R N, Willcox G. Archaeobotanical results from Sarazm, Tajikistan, an Early Bronze Age Settlement on the edge: Agriculture and exchange. *Environ Archaeol.* 2013; 18: 211–221. <https://doi.org/10.1179/1749631413Y.0000000008>
23. Doumani PN, Frachetti MD, Beardmore R, Schmaus TM, Spengler RN, Mar'yashev AN. Burial ritual, agriculture, and craft production among Bronze Age pastoralists at Tasbas (Kazakhstan). *Archaeol Res Asia.* 2015; 1: 17–32. <https://doi.org/10.1016/j.ara.2015.01.001>
24. Zhou X., Yu J., Spengler NR, Shen H, Zhao K, Ge J, et al. 5,200-year-old cereal grains from the eastern Altai Mountains redete the trans-Eurasian crop exchange. *Nat Plants.* 2020; 6: 78–87. <https://doi.org/10.1038/s41477-019-0581-y> PMID: 32055044
25. Motuzaite Matuzeviciute G, Tabaldiev K, Hermes T, Ananyevskaya E, Grippedis M, Luneau E, et al. High-Altitude Agro-Pastoralism in the Kyrgyz Tien Shan: New Excavations of the Chap Farmstead (1065–825 cal b.c.). *J Field Archaeol.* 2020; 45: 29–45. <https://doi.org/10.1080/00934690.2019.1672128>
26. Campbell G, Moffett L, Straker V. *Environmental Archaeology. A Guide to the Theory and Practice of Methods, from Sampling and Recovery to Post-excavation* (second edition). Second edition. Swindon: English Heritage; 2011.
27. Cappers RTJ, Bekker RM, Jans JEA. *Digitale zadenatlas van Nederland (Digital Seed Atlas of the Netherlands).* Groningen: Barkhuis Publishing and Gronigen University Library; 2006.
28. Jacomet S. *Identification of cereal remains from archaeological sites.* 2nd ed. Basel University, Basel; 2006.
29. Reimer PJ, Bard E, Bayliss A, Beck JW, Blackwell PG, Ramsey CB, et al. IntCal13 and Marine13 radiocarbon age calibration curves 0–50,000 years cal BP. *Radiocarbon.* 2013; 55: 1869–1887. https://doi.org/10.2458/azu_js_rc.55.16947
30. Bronk Ramsey C. Methods for summarizing radiocarbon datasets. *Radiocarbon.* 2017; 59: 1809–1833. <https://doi.org/10.1017/RDC.2017.108>
31. Hillman G. Archaeology, Percival, and the problems of identifying wheat remains. *Wheat Taxon Leg John Percival Linn Soc Lond Linn Spec.* 2001; 27–36.
32. Hillman GC, Mason S, de Moulins D, Nesbitt M. Identification of archaeological remains of wheat: the 1992 London workshop. *J Assoc Environ Archaeol.* 1996; 12: 195–209.
33. Charles M., Forster E., Wallace M., Jones G. “Nor ever lightning char thy grain”: establishing archaeologically relevant charring conditions and their effect on glume wheat grain morphology. *STAR Sci Technol Archaeol Res.* 2015; 1: 1–6. <https://doi.org/10.1179/2054892315Y.0000000008>

34. Spengler RN. Dung burning in the archaeobotanical record of West Asia: where are we now? *Veg Hist Archaeobotany*. 2018; 28: 215–227. <https://doi.org/10.1007/s00334-018-0669-8>
35. Vanhanen S. Archaeobotanical study of a late Iron Age agricultural complex at Orijärvi, Eastern Finland. *Fennosc Archaeol*. 2012; XXIX: 55–72.
36. Stančikaitė M, Kisieliene D, Mažeika J, Blaževičius P. Environmental conditions and human interference during the 6th and 13th–15th centuries AD at Vilnius Lower Castle, east Lithuania. *Veg Hist Archaeobotany*. 2008; 17: 239–250. <https://doi.org/10.1007/s00334-008-0181-7>
37. Clapham A R, Tutin TG, Moore DM. *Flora of the British Isles*. Third. Cambridge: Cambridge University Press; 1987.
38. Bordzilovskii EI, Lavrenko EM. *Flora URSS*. Kiev: Academy of science of URSS; 1940.
39. Motuzaite Matuzeviciute G, Mir Makhmad B, Tabaldiev K. First comprehensive archaeobotanical analysis of prehistoric agriculture in Central Tien Shan (Kyrgyzstan). *Veg Hist Archaeobotany*. forthcoming.
40. d'Alpoim Guedes JA, Lu H, Hein AM, Schmidt AH. Early evidence for the use of wheat and barley as staple crops on the margins of the Tibetan Plateau. *Proc Natl Acad Sci*. 2015; 112: 5625–5630. <https://doi.org/10.1073/pnas.1423708112> PMID: 25902511
41. Blum A. Constitutive traits affecting plant performance under stress. In: Edmeades GO, Banziger M, Mickelson HR, Pena-Valdivia CB, editors. *Mexico: International Maize and Wheat Improvement Center*; 1996. pp. 131–135.
42. Blum A. Crop responses to drought and the interpretation of adaptation. *Plant Growth Regul*. 1996; 20: 135–148. <https://doi.org/10.1007/BF00024010>
43. Blum A. Improving wheat grain filling under stress by stem reserve mobilisation. *Euphytica*. 1998; 100: 77–83. <https://doi.org/10.1023/A:1018303922482>
44. Nicolas M, Gleadow R, Dalling M. Effects of drought and high temperature on grain growth in wheat. *Aust J Plant Physiol*. 1984; 11: 66.
45. Shah N, Paulsen G. Interaction of drought and high temperature on photosynthesis and grain-filling of wheat. *Plant Soil*. 2003; 257: 219–226. <https://doi.org/10.1023/A:1026237816578>
46. Altenbach S, DuPont F, Kothari K, Chan R, Johnson E, Lieu D. Temperature, water and fertilizer influence the timing of key events during grain development in a US spring wheat. *J Cereal Sci*. 2003; 37: 9–20. <https://doi.org/10.1006/jcrs.2002.0483>
47. Reed K, Sabljic S, Šoštarić R, Essert S. Grains from ear to ear: the morphology of spelt and free-threshing wheat from Roman Mursa (Osijek), Croatia. *Veg Hist Archaeobotany*. 2019; 28: 623–634. <https://doi.org/10.1007/s00334-019-00719-4>
48. Stevens CJ, Murphy C, Roberts R, Lucas L, Silva F, Fuller DQ. Between China and South Asia: A Middle Asian corridor of crop dispersal and agricultural innovation in the Bronze Age. *The Holocene*. 2016; 26: 1541–1555. <https://doi.org/10.1177/0959683616650268> PMID: 27942165
49. Crawford G. East Asian plant domestication. In: Stark ST, editor. *Archaeology of Asia*. Oxford: Blackwell Publishing; 2006. pp. 77–95.
50. Spengler RN. Agriculture in the Central Asian Bronze Age. *J World Prehistory*. 2015; 28: 215–253. <https://doi.org/10.1007/s10963-015-9087-3>
51. Motuzaite Matuzeviciute G., Telizhenko S. The First Farmers of Ukraine: an Archaeobotanical Investigation and AMS Dating of Wheat Grains from the Ratniv-2 Site. *Archeol Litu*. 2016; 17: 100–111. <https://doi.org/10.15388/ArchLit.2016.17.10685>
52. Betts A, Yatoo M, Spate M, Frazer J, Kaloo Z, Younus R, et al. The Northern Neolithic of the Western Himalayas: New Research in the Kashmir Valley. *Archaeol Res Asia*. 2019; 18: 17–39. <https://doi.org/10.1016/j.ara.2019.02.001>
53. Lister DL, Jones MK. Is naked barley an eastern or a western crop? The combined evidence of archaeobotany and genetics. *Veg Hist Archaeobotany*. 2013; 22: 439–446. <https://doi.org/10.1007/s00334-012-0376-9>
54. Yadav RK, Gautam S, Palikhey E, Joshi BK, Ghimire KH, Gurung R, et al. Agro-morphological diversity of Nepalese naked barley landraces. *Agric Food Secur*. 2018; 7: 86. <https://doi.org/10.1186/s40066-018-0238-5>
55. Knüpfer H, Terentyeva I, Hammer K, Kovaleva O, Sato K. Ecogeographical diversity—a Vavilovian approach. In: von Bothmer R, van Hintum T, Knüpfer H, Sato K, editors. *Diversity in barley*. Amsterdam: Elsevier; 2003. pp. 53–76.
56. Ghimire KH, Joshi BK, Gurung R, Palikhey E, Pudasaini N, Parajuli A. Adaptability of Naked Barley Landraces in Mountain Agro-ecosystem of Nepal. *J Nepal Agric Res Counc*. 2019; 5: 34–42. <https://doi.org/10.3126/jnarc.v5i1.22064>

57. Harlan JR. On the origin of Barley. In: Dickson AD, Harlan JR, Klingman DL, et al. Barley: origin, botany, culture, winter hardiness, genetics, utilization, pests (U.S. Department of Agriculture, Washington, DC). Agriculture Handbook no. 338. 1968. pp. 10–36.
58. Li Y, Storozum MJ, Wang X, Guo W. Early irrigation and agropastoralism at Mohuchahangoukou (MGK), Xinjiang, China. *Archaeol Res Asia*. 2017; 12: 23–32. <https://doi.org/10.1016/j.ara.2017.09.005>
59. Park J, Park J, Yi S, Kim JC, Lee E, Choi J. Abrupt Holocene climate shifts in coastal East Asia, including the 8.2 ka, 4.2 ka, and 2.8 ka BP events, and societal responses on the Korean peninsula. *Sci Rep*. 2019; 9: 1–16. <https://doi.org/10.1038/s41598-018-37186-2>
60. Wanner H, Beer J, Bütikofer J, Crowley TJ, Cubasch U, Flückiger J, et al. Mid- to Late Holocene climate change: an overview. *Quat Sci Rev*. 2008; 27: 1791–1828. <https://doi.org/10.1016/j.quascirev.2008.06.013>
61. Fairbairn A. Preliminary archaeobotanical investigations of plant production, consumption, and trade at Bronze Age Kültepe-Kanesh. In: Artici L, Barjamovic G, Fairbairn A, Kulakoglu F. *Current Research at Kültepe-Kanesh: An Interdisciplinary and Integrative Approach to Trade Networks, Internationalism, and Identity*. Artici, L., Barjamovic G., Fairbairn A., Kulakoglu, F. ISD LLC; 2014. pp. 177–194.
62. Styring AK, Charles M, Fantone F, Hald MM, McMahon A, Meadow RH, et al. Isotope evidence for agricultural extensification reveals how the world's first cities were fed. *Nat Plants*. 2017; 3: 1–11. <https://doi.org/10.1038/nplants.2017.76> PMID: 28581507
63. Vaiglova P, Bogaard A, Collins M, Cavanagh W, Mee C, Renard J, et al. An integrated stable isotope study of plants and animals from Kouphovouno, southern Greece: a new look at Neolithic farming. *J Archaeol Sci*. 2014; 42: 201–215. <https://doi.org/10.1016/j.jas.2013.10.023>
64. Frachetti MD. Multiregional Emergence of Mobile Pastoralism and Nonuniform Institutional Complexity across Eurasia. *Curr Anthropol*. 2012; 53: 2–38. <https://doi.org/10.1086/663692>
65. Schroeter N, Lauterbach S, Stebich M, Kalanke J, Mingram J, Yildiz C, et al. Biomolecular Evidence of Early Human Occupation of a High-Altitude Site in Western Central Asia During the Holocene. *Front Earth Sci*. 2020; 8. <https://doi.org/10.3389/feart.2020.00020>
66. Spengler RN, Frachetti MD, Fritz GJ. Ecotopes and herd foraging practices in the steppe/mountain ecotone of central Asia during the Bronze and Iron Ages. *J Ethnobiol*. 2013; 33: 125–147. <https://doi.org/10.2993/0278-0771-33.1.125>