



Soybean Seed Treatment with Nickel Improves Biological Nitrogen Fixation and Urease Activity

José Lavres^{1*}, Guilherme Castro Franco¹ and Gil M. de Sousa Câmara²

¹ Center for Nuclear Energy in Agriculture, University of Sao Paulo, Piracicaba, Brazil, ² Department of Crop Science, Luiz de Queiroz College of Agriculture, University of Sao Paulo, Piracicaba, Brazil

OPEN ACCESS

Edited by:

Naser A. Anjum,
University of Aveiro, Portugal

Reviewed by:

Mirza Hasanuzzaman,
Sher-e-Bangla Agricultural University,
Bangladesh
M. Iqbal R. Khan,
International Rice Research Institute,
Philippines

*Correspondence:

José Lavres
jlavres@usp.br

Specialty section:

This article was submitted to
Environmental Toxicology,
a section of the journal
Frontiers in Environmental Science

Received: 31 December 2015

Accepted: 02 May 2016

Published: 19 May 2016

Citation:

Lavres J, Castro Franco G and
de Sousa Câmara GM (2016)
Soybean Seed Treatment with Nickel
Improves Biological Nitrogen Fixation
and Urease Activity.
Front. Environ. Sci. 4:37.
doi: 10.3389/fenvs.2016.00037

Nickel (Ni) is an essential micronutrient required for plants' metabolism due to its role as a structural component of urease and hydrogenase, which in turn perform nitrogen (N) metabolism in many legume species. Seed treatment with cobalt, molybdenum and *Bradyrhizobium* strains has been widely practiced to improve crops. Additionally, seed treatment together with Ni fertilization of soybean might improve the efficiency of biological nitrogen fixation (BNF), boosting grain dry matter yield, and N content. The objective of this study was to evaluate the effect of soybean seed treatment with Ni rates (0, 45, 90, 135, 180, 360, and 540 mg kg⁻¹) on BNF, directly by the ¹⁵N natural abundance method ($\delta^{15}\text{N}\%$) and by measurement of urease [E.C. 3.5.1.5] activity, as well as indirectly by nitrogenase (N-ase) activity [E.C. 1.18.6.1]. Soybean plants (cultivar *BMX Potência RR*) were grown in a sandy soil up to the R7 developmental stage (grain maturity), at which point the nutrient content in the leaves, chlorophyll content, urease, and N-ase activities, Ni and N content in the grains, nodulation (at R1 – flowering stage), as well as the contribution of biological nitrogen fixation (BNF; $\delta^{15}\text{N}\%$) were evaluated. The proportion of N derived from N₂ fixation varied from 77 to 99% using the natural ¹⁵N abundance method and non-nodulating *Panicum miliaceum* and *Phalaris canariensis* as references. A Ni rate of 45 mg kg⁻¹ increased BNF by 12% compared to the control. The increased N uptake in the grains was closely correlated with chlorophyll content in the leaves, urease, and N-ase activities, as well as with nodulation. Grain dry matter yield and aerial part dry matter yield increased, respectively, by 84 and 51% in relation to the control plants at 45 mg kg⁻¹ Ni via seed treatment. Despite, Ni concentration was increased with Ni-seed treatment, Ni rates higher than 135 mg kg⁻¹ promoted negative effects on plant growth and yield. In these experimental conditions, seed treatment with low Ni rates caused higher dry matter yield of plants and grains, N content in the grains, and in the aerial part by increasing of BNF.

Keywords: ¹⁵N natural abundance method, nitrogenase, nitrogen uptake, nodule fresh weight, SPAD index

INTRODUCTION

In its 10th Brazilian grain harvest survey, The Brazilian Company Supply (Companhia Nacional de Abastecimento (Conab), 2014) estimated the country's harvest in the 2014–2015 growing season at 206.3 million metric tons, produced by a tilled area of 57.5 million hectares. After the harvest was finished, the nation's soybean production set a new record, at 96.2 million tons, from 31.9 million

hectares, with average yield of 3016 kg ha⁻¹. The conduction of basic and applied research and application of new technologies in recent decades has allowed adaptation of soybean to virtually all regions of the country, from the state of Rio Grande do Sul in the south to the tropical equatorial latitudes in the north. The expansion of soybean growing in Brazil has always been closely associated with scientific advances and the availability of new technologies, the highlights being genetic gains provided by various improvement programs, better chemical management of tropical soils, improved plant nutrition, increase of no-till farming methods, development of more efficient chemicals to protect crops from pests, diseases and weeds, and the offer of seeds with better physiological and phytosanitary quality (Alves et al., 2003; Sentelhas et al., 2015).

In the area of plant nutrition, important progress has been made to improve the interaction of soybean plants with bacteria belonging to the *Bradyrhizobium* genus, which are highly efficient in promoting BNF. Through infection of the root system, they form nodules within which the bradyrhizobia reduce N₂ to NH₃ (Cadisch et al., 2000; González-Guerrero et al., 2014). Biologic nitrogen fixation (BNF) is one of the most effective alternatives to reduce overuse of nitrogen fertilizers for improving plant nutrition as well as to reduce environmental impacts (Jensen and Hauggaard-Nielsen, 2003; Campo et al., 2009).

Nitrogen (N) is the nutrient required in greatest quantity by soybean plants, with grain concentrations ranging from 45 to 65 g kg⁻¹. To achieve average yield of 3000 kg ha⁻¹, it is estimated that application of 240 kg ha⁻¹ of N is necessary (Alves et al., 2003). In Brazil, it has been estimated that rates of N₂ fixation in soybean can exceed 300 kg of N ha⁻¹, providing up to 94% of total plant N (Hungria et al., 2005, 2006). Therefore, good BNF is fundamental to supply the N demand, so improvements in this respect have been a huge boon to Brazilian farmers due to savings on nitrogen fertilizers, which cost between US\$ 15.5 and US\$ 18.0 billion a year—depending on the exchange rate and the unit fertilizer price—(Hungria et al., 2005, 2006). In leguminous plants, metal cofactors are required by the endosymbiotic rhizobia located in the cortical cells of the root system (González-Guerrero et al., 2014). However, the low availability of cationic micronutrients like Cu²⁺, Fe²⁺, Mn²⁺, and Ni²⁺, especially in tropical Oxisols that have received excessive lime doses, can result in nutritional disorders (e.g., deficiency induced by Mn and Fe in soils in Cerrado regions), reducing the nitrogen fixation capacity (Fageria and Stone, 2008).

At the core of this process are a number of metalloproteins that catalyze and provide energy for the conversion of atmospheric N₂ to ammonia, eliminate free radicals produced by this process, and create the microaerobic conditions required by these reactions (González-Guerrero et al., 2014). Among molybdenum (Mo), cobalt (Co), and iron (Fe), another micronutrient that is important in the BNF process is nickel (Ni), which is involved in the expression and biosynthesis of hydrogenase (Klucas et al., 1983). Studies indicate that the level of hydrogenase activity can be limited in agricultural soils due to low Ni availability (<0.2 mg kg⁻¹, extracted by DTPA). Low levels of available Ni in the soil affect the hydrogenase activity, which can be remediated by application of 10 mg dm⁻³ of Ni (Ureta et al.,

2005). However, it has been pointed out in the literature that Ni requirement in all plants vary and it depends on plant species and varieties (Seregin and Kozhevnikova, 2006).

Despite plants' requirement for Ni and the demonstration that it is essential by various authors, there is no official recommendation of nickel rate for treatment of soybean seeds. Normally the treatment of seeds with micronutrients has been done with the goal of enhancing BNF, and in this respect, minimum rates of Mo and Co have already been defined by researchers and are widely applied by farmers. Besides, in Brazil, the law that controls fertilizers trade included Ni on the list of micronutrients in which Ni was designed for application to soil, seeds, or foliar. However, experiments are still necessary to define the Ni rates for treatment of soybean seeds.

In fact, very little research has been done about the influence of Ni on the symbiotic system of BNF. Therefore, this study evaluated the effect of adding Ni, through treatment of soybean seeds, on the BNF (directly by the ¹⁵N natural abundance method δ¹⁵N‰), quantities of Ni in the plants, urease and nitrogenase activities (indirectly methods) and production of biomass by the roots, aerial parts, and grains.

MATERIALS AND METHODS

The experiment was conducted in February to June 2014, in a greenhouse in the research area of the Department of Biosystems Engineering of Luiz de Queiroz Superior School of Agriculture (ESALQ), part of the University of São Paulo (USP). The soil for the experiment, classified as Red-Yellow Latosol (Oxisol; Embrapa, 2006), was collected from the surface layer (0–20 cm) of a cultivated area in the municipality of Piracicaba, São Paulo state. The texture was sandy, with 160 g kg⁻¹ of clay, 20 g kg⁻¹ of silt, and 820 g kg⁻¹ of sand, of which 550 (g kg⁻¹) was fine sand and 270 (g kg⁻¹) was coarse sand. The chemical characteristics are presented in **Table 1**.

The species grown was *Glycine max* (L.) Merrill, cultivar *BMX Potência RR*. This genotype is one of the most widely planted in Brazil, and presents indeterminate growth habit, early cycle, and maturity group number 6.7. The experiment started on February 17, 2014 and the plants were harvested at the end of the reproductive cycle, corresponding to reproductive phenological stage of fruit and seed ripening—(R7; Fehr et al., 1971).

The plants were grown in plastic pots with capacity of 3.0 dm³ of soil, with two plants per pot. The soil utilized had not been previously cultivated with legumes. This fact, along with the previous experience of the student research assistants in experiments with soybean plants in the same greenhouse (who reported difficulty in initial development of the plants due to lack of N), caused the decision to assure initial supply of all the treatments with a small dose of N-urea (10 mg dm⁻³), equivalent to a rate of 20 kg ha⁻¹, to supply the needs for initial development of the plants (Hatfield et al., 1974; Pierozan et al., 2015). The dose of K, in the form of K₂SO₄, was 150 mg dm⁻³, applied at the time of sowing, and later as top dressing during phenological stages V1 and V5 (first and fifth leaflet appearance, respectively; Fehr et al., 1971). The P rate, in the form of Ca(H₂PO₄)₂ °

and non-fixing plants, grown in the same soil, absorb N with the same marking with ^{15}N (Shearer and Kohl, 1986; Boddey et al., 2001; Guimaraes et al., 2008). This limitation was overcome by selecting reference species with root development and N demand similar to soybean. The proportion of N in the plants that can fix N_2 from the air by the BNF process was calculated by the equation of Shearer and Kohl (1986):

$$\% \text{BNF} = 100 \times (\delta^{15}\text{N reference} - \delta^{15}\text{N soy}) / (\delta^{15}\text{N reference} - \text{B})$$

Where:

$\% \text{BNF}$ = percentage of N obtained from BNF in the soybean plants;

$\delta^{15}\text{N reference}$ = natural abundance of ^{15}N in the reference plant (non-fixer of N);

$\delta^{15}\text{N soy}$ = natural abundance of ^{15}N in soybean plants.

B = fractional contribution of ^{15}N in relation to ^{14}N by the soybean plants in absorbing N from the soil. In this experiment, we used the average value of -1.17% based on the data obtained by Guimaraes et al. (2008). Subsamples of dried and ground material sampled were analyzed for $\% \text{N}$ and $\delta^{15}\text{N}$ in an automated mass spectrometer coupled to an ANCA-GSL N analyzer (Sercon Co., UK). The total N concentrations and $^{15}\text{N}/^{14}\text{N}$ isotope ratio were calculated according to the method of Barrie and Prosser (1996).

The fresh tissue samples were collected in the morning (around 8:00 a.m.), placed in plastic bags and then in polystyrene foam boxes to maintain the temperature and enzyme activity low. These samples consisted of the leaves used for foliar diagnosis of chlorophyll content, collected at stage R1. The urease activity *in vivo* was measured by an adaptation of the methods described by Hogan et al. (1983). The plant material (200 mg of green leaves, cut into "slices" with width of 1 mm) were placed in a medium of 8 mL of NaH_2PO_4 buffer with urea pH 7.4 and incubated for 3 h at 30°C , protected from light in aluminum foil and kept under constant agitation. In a test tube containing 0.5 mL of the extract obtained after incubation, 2.5 mL of Reagent I (phenol 0.1 mol L^{-1} , sodium nitroprusside— $170 \mu\text{mol L}^{-1}$) and 2.5 mL of Reagent II ($\text{NaOH } 0.125 \text{ mol L}^{-1}$, $\text{Na}_2\text{HPO}_4 \cdot 12\text{H}_2\text{O } 0.15 \text{ mol L}^{-1}$, NaOCl — $3\% \text{ Cl}_2$) were added. The tubes were closed with stoppers to avoid loss of NH_3 and placed in a water bath at 37°C for 35 min. After this interval, the reaction was measured by colorimetry in a spectrophotometer at 625 nm. The urease activity was determined by the quantity of ammonium (NH_4^+) produced, and the values were compared with a standard curve, previously plotted using NH_4Cl as a standard for ammonium. The results obtained were expressed in $\mu\text{mol NH}_4^+ \text{ g}^{-1} \text{ FW h}^{-1}$.

The BNF was also ascertained indirectly by the acetylene reduction assay (ARA; Boddey et al., 2001). For this, the plants were collected in stage R1 (Fehr et al., 1971) and the roots containing nodules were carefully separated from the soil, after which the nodules were placed in hermetically sealed flasks. Then a needle and syringe were used to withdraw about 10% of the gas phase from each flask (corresponding to a volume of 1 mL)

and the same quantity of acetylene gas, with 98–99% purity, was injected in the flask. Due to the large variations of the ideal incubation time with acetylene gas described in the literature, we chose 1 h, so as not to overestimate the enzyme activity and to avoid possible problems of conversion of the acetylene gas into ethylene by the composition of the stoppers utilized to seal the flasks. To measure the concentration of ethylene gas formed in the flask, 1 mL of the gas phase was withdrawn with a needle and syringe with capacity of 2.5 mL and injected in a gas chromatograph (Thermo Scientific Finnigan TraceTM GC 2000 model), with two Porapack N columns (Boddey et al., 2001). The run time to measure the ethylene concentration was 1 min.

At the end of the experiment, the remaining plants were harvested and separated into aerial part (leaves, stems, and pods) and grains. The material was identified, placed in paper bags and dried in an oven at 65°C for 72 h. The two dried plant portions (grains and aerial parts) were weighed on a scale with precision of 0.001 g.

Then the dried material was ground in a Wiley mill and passed through a sieve with mesh size of 1 mm to perform the chemical analyses of macro and micronutrients in the tissues according to the method described by Malavolta et al. (1997). The quantities of nutrients accumulated in the plant tissues were calculated by multiplying the concentration by the dry matter weight of each plant part.

The statistical analyses were performed with the SAS Institute (2009). The data were first analyzed by calculating the descriptive parameters mean, standard deviation, and coefficient of variation. When necessary, the data were transformed to satisfy the criteria of homogeneity and homoscedasticity. The data were also submitted to analysis of variance by the *F*-test. When the effect of the Ni rates was significant, we applied linear and quadratic regression analysis. In all analyses, the level of significance was considered to be 5%.

RESULTS

The temperature and relative humidity conditions in the greenhouse were favorable to the development of the soybean plants, without any extreme conditions that could have impaired their development (**Figure 1**). The temperature varied from 20 to 39°C , with average of 29°C , and the relative humidity remained near 80%, values considered favorable for development of the species.

The application of the Ni doses via seeds influenced the leaf concentrations of the macronutrients N, P, K, Ca, Mg, and S (**Table 2**). We observed a quadratic effect for the leaf concentrations of P, K, Mg, and Ca, in general with a reduction of the leaf concentrations of these nutrients at the higher Ni rates. On the other hand, we observed a linear effect for concentration of N and S in the leaves, varying from 25.8 to 34 g kg^{-1} and from 2.1 to 3.8 g kg^{-1} , respectively, at Ni rates of 0 and 540 (mg kg^{-1}). The concentrations of P ranged from 2.1 to $3.1 \text{ (g kg}^{-1})$, respectively, for rates of 0 and 540 (mg kg^{-1}) of Ni in seeds. The concentrations of K varied from 24 to $35 \text{ (g kg}^{-1})$, respectively, at doses of 0 and 360 (mg kg^{-1}). Ca and Mg

varied, respectively, from 16 to 24 and from 3.3 to 5.1 (g kg⁻¹), respectively, at Ni rates of 0 and 135 (mg kg⁻¹; **Table 2**).

Seed-Ni treatments have changed the concentration of micronutrients B, Cu, Fe, Mn, Ni, and Zn in the leaves (**Table 2**). It was observed linear effect for concentration of all

micronutrients, except to Ni. The concentration of B, Cu, Fe, Mn, and Zn varied, respectively, from 78 to 125 mg kg⁻¹ of B, 10.2 to 12.7 mg kg⁻¹ of Cu, 329.9 to 522 mg kg⁻¹ of Fe, 227.5 to 302.8 mg kg⁻¹ of Mn, and from 106.8 to 167.9 mg kg⁻¹ of Zn, by increasing Ni rates from 0 to 540 mg kg⁻¹. The application of Ni in the seeds influenced the concentration of this element in the leaves used for diagnosis (**Table 2**), in which this concentration varied from 0.07 to 1.22 mg kg⁻¹, respectively, for Ni rates of 0 and 135 mg kg⁻¹, which is the inflection point of the Ni rates.

The effect of the Ni rates positively affected the SPAD index, with values ranging from 27.8 to 31.5, respectively, at Ni doses of 0 and 135 mg kg⁻¹ (**Figure 2**), corresponding to 13% of increase on leaf greenness. An exponential effect for the SPAD value was observed, where the threshold was achieved at Ni rate of 135 mg kg⁻¹. On the other hand, it was not observed significant effect between N content in the leaves and SPAD index taken on this leaves (data not showed).

The application of Ni doses in the seeds also had a positive influence on the accumulation of N in the grains and aerial part of the soybean plants in the final reproductive phenological stage (R7; the beginning of grain maturity; **Figures 3A,B**) as compared to the control. The average accumulation of total N in the aerial part (green leaves, dry leaves, stems, and pods) was 136.5 mg per plant, considering all Ni rates (from 45 to 540 mg kg⁻¹). Accumulation of total N in the grains increased 35% with Ni-seed treatment from 0 to 45 mg kg⁻¹, and 16% by increasing Ni rates from 45 to 360 mg kg⁻¹, in which the highest Ni-seed dose

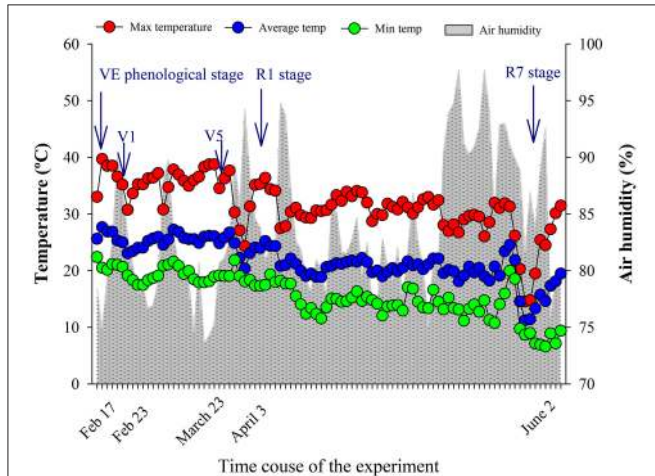


FIGURE 1 | Maximum, average, minimum temperature (°C), and air humidity (%) data during the experimental period. Vegetative and reproductive phenological stages (VE, emergence—cotyledons above the soil surface; V1, first node—fully developed leaves at unifoliolate nodes, and V5, fifth node—five nodes on the main stem with fully developed leaves beginning with the unifoliolate nodes; R1, beginning bloom—one open flower at any node on the main stem and R7, beginning maturity—One normal pod on the main stem that has reached its mature pod color; Fehr et al., 1971).

TABLE 2 | Concentration [Y] of nitrogen (N), phosphorus (P), potassium (K), calcium (Ca), magnesium (Mg), sulfur (S), boron (B), copper (Cu), iron (Fe), manganese (Mn), nickel (Ni), and zinc (Zn) taken on the leaves of soybean cultivar *BMX Potência RR*, collected at R1 phenological stage (Fehr et al., 1971), as related to Ni seed treatments [X].

	Nutrient concentration in the leaves	Coefficient of determination	Nutrient varying
--- (g kg⁻¹) ---			
Nitrogen	$Y_N = 29.82 + 0.005 \cdot N$	$R^2 = 0.58^{**}$	
Phosphorus	$Y_P = 2.22 + 0.004 \cdot P - 0.000003 \cdot P^2$	$R^2 = 0.70^{**}$	
Potassium	$Y_K = 20.69 + 0.077 \cdot K - 0.0001 \cdot K^2$	$R^2 = 0.72^{**}$	
Calcium	$Y_{Ca} = 18.09 + 0.024 \cdot Ca - 0.00003 \cdot Ca^2$	$R^2 = 0.63^{**}$	
Magnesium	$Y_{Mg} = 3.71 + 0.003 \cdot Mg - 0.000006 \cdot Mg^2$	$R^2 = 0.54^*$	
Sulfur	$Y_S = 2.47 + 0.049 \cdot S$	$R^2 = 0.61^{**}$	
--- (mg kg⁻¹) ---			
Boron	$Y_B = 84.87 + 0.069 \cdot B$	$R^2 = 0.63^{**}$	
Copper	$Y_{Cu} = 10.79 + 0.006 \cdot Cu$	$R^2 = 0.48^*$	
Iron	$Y_{Fe} = 387.09 + 0.263 \cdot Fe$	$R^2 = 0.59^{**}$	
Manganese	$Y_{Mn} = 243.48 + 0.128 \cdot Mn$	$R^2 = 0.55^*$	
Nickel	$Y_{Ni} = 0.216 + 0.006 \cdot Ni - 0.000008 \cdot Ni^2$	$R^2 = 0.68^*$	
Zinc	$Y_{Zn} = 117.32 + 0.099 \cdot Zn$	$R^2 = 0.64^{**}$	

Mean (n = 4 biological replicates; Fisher Test, p < 0.01. **is significant at 0.01 and *is significant at 0.05).

resulted in a lower total N-accumulation, 5% lesser than the control.

The Ni rates applied in the seeds positively influenced the Ni content in the aerial parts collected in phenological stage

R7. The Ni content in the aerial parts fit a linear regression model (Figure 3C), showing a direct and positive correlation with the rates applied ($R^2 = 0.95^{***}$). However, for the accumulation of Ni in the grains, the effect was quadratic, in which the dose of 360 mg kg^{-1} resulted in the highest Ni accumulation ($R^2 = 0.97^{***}$). Nickel contents in the seeds increased by 221% with Ni rates from 0 to 540 mg kg^{-1} . On the other hand, it was observed Ni-accumulation in the grains of 262% by increasing Ni rates from 0 to 360 mg kg^{-1} (Figure 3D).

The BNF estimated by the technique of natural abundance of ^{15}N (Table 3), by using the concentrations of $\delta^{15}\text{N}$ in the grains and aerial parts of soybean at R7 reproductive stage (phenological stage of fruit and seed ripening), as well as in the non-fixing plants (used as controls) showed values with respective $\delta^{15}\text{N}$ for *P. miliaceum* and *P. canariensis* of 6.05 and 5.14‰, respectively. These species (non-fixers of N) were grown in the same soil and climate conditions as the soybean plants. In the aerial part of the soybean plants, the concentrations of $\delta^{15}\text{N}$ ranged from 1.53 to 0.91 and the BNF varied from 61 to 70% on average, respectively, for Ni rates of 0 and 360 mg kg^{-1} , without significant differences between the Ni rates applied (Table 3). However, analysis of the natural abundance of $\delta^{15}\text{N}$ in the grains indicated there was a difference in BNF of the treatments, with variation of $\delta^{15}\text{N}$ of 0.42 to -1.72. The application of 45 mg kg^{-1} of Ni via seeds indicated that 99% of the N accumulated in the grains came from BNF, while in the control treatment (none Ni application rate) the N fixation rate was only 77% (Table 3).

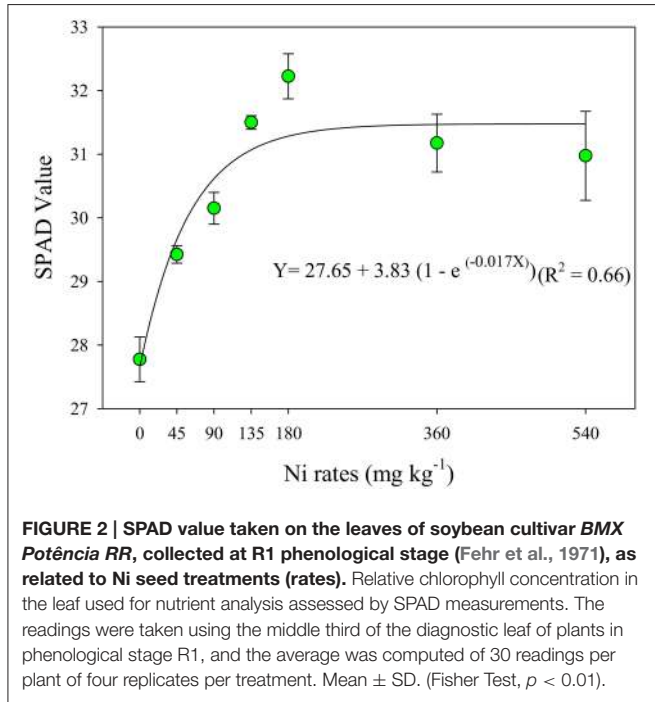


FIGURE 2 | SPAD value taken on the leaves of soybean cultivar *BMX Potência RR*, collected at R1 phenological stage (Fehr et al., 1971), as related to Ni seed treatments (rates). Relative chlorophyll concentration in the leaf used for nutrient analysis assessed by SPAD measurements. The readings were taken using the middle third of the diagnostic leaf of plants in phenological stage R1, and the average was computed of 30 readings per plant of four replicates per treatment. Mean \pm SD. (Fisher Test, $p < 0.01$).

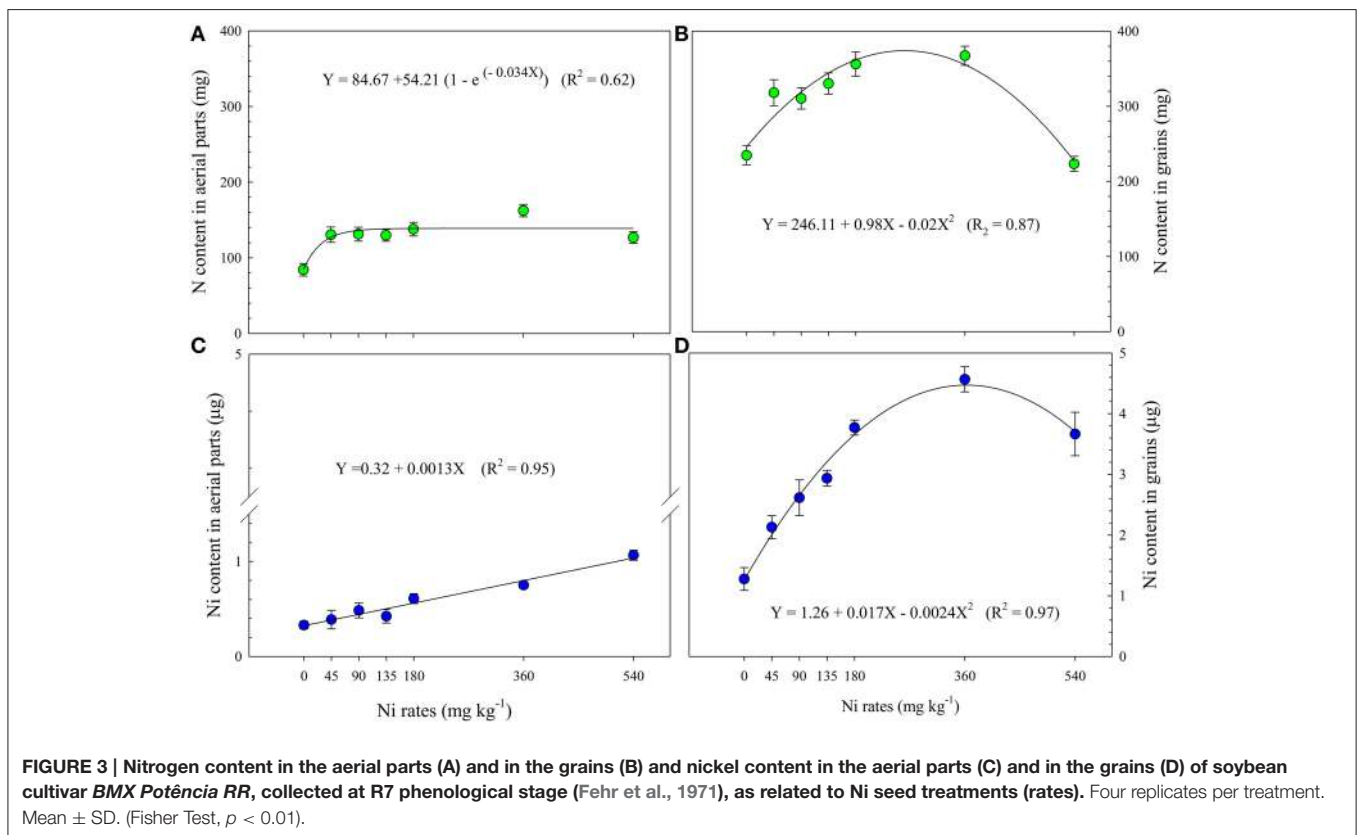


FIGURE 3 | Nitrogen content in the aerial parts (A) and in the grains (B) and nickel content in the aerial parts (C) and in the grains (D) of soybean cultivar *BMX Potência RR*, collected at R7 phenological stage (Fehr et al., 1971), as related to Ni seed treatments (rates). Four replicates per treatment. Mean \pm SD. (Fisher Test, $p < 0.01$).

TABLE 3 | Natural abundance of ^{15}N ($\delta^{15}\text{N}$ ‰) and estimation of BNF (%) in the soybean plant (aerial parts and grain) and activity of reducing acetylene (ARA) in soybean nodules grown in greenhouse as related to the application of Ni rates via seed.

Ni rates (mg kg ⁻¹)	$\delta^{15}\text{N}$ ‰	BNF [‡] %	BNF [§] %	% BNF mean	ARA [£] ($\mu\text{mol h}^{-1}$)
Grains					
0	0.42b	78b	76b	77b	528c
45	-1.14a	100a	98a	99a	880b
90	-0.92ab	97ab	95ab	96ab	936a
135	0.04ab	83ab	81ab	82ab	778ab
180	-0.15ab	86ab	84ab	85ab	756ab
360	-0.35ab	89ab	87ab	88ab	706ab
540	-0.81ab	95ab	93ab	94ab	793ab
<i>Pr>Fc</i>	0.036**	0.035**	0.037**	0.036**	0.15 ^{NS}
CV (%)	7.5	8.6	8.6	8.5	34.5
<i>R</i> ² linear	5.9 ^{NS}	5.9 ^{NS}	5.9 ^{NS}	5.9 ^{NS}	1.3 ^{NS}
<i>R</i> ² quadratic	6.3 ^{NS}	6.3 ^{NS}	6.3 ^{NS}	6.3 ^{NS}	11.4 ^{NS}
Aerial parts					
0	1.53	62	61	62	-
45	1.42	64	63	63	-
90	0.96	70	69	70	-
135	1.41	64	63	63	-
180	1.62	61	60	61	-
360	0.91	71	70	70	-
540	1.41	64	63	63	-
<i>Pr>Fc</i>	0.97 ^{NS}	0.97 ^{NS}	0.97 ^{NS}	0.97 ^{NS}	-
CV (%)	8.6	23.2	23.2	23.2	-
<i>R</i> ² linear	4.3 ^{NS}	4.3 ^{NS}	4.3 ^{NS}	4.3 ^{NS}	-
<i>R</i> ² quadratic	16.5 ^{NS}	16.5 ^{NS}	16.5 ^{NS}	16.5 ^{NS}	-

Small letters indicate significant differences between treatments (ANOVA with F-Test, $p \leq 0.01$). [‡] $\delta^{15}\text{N}$ values in non-nodulating plants of *Panicum miliaceum*: 6.05‰ ($n = 4$); [§] $\delta^{15}\text{N}$ values in non-nodulating plants of *Phalaris canariensis*: 5.14‰ ($n = 4$). [£]Activity of reducing acetylene (ARA). **is significant at 0.01.

The activity of reducing acetylene (ARA) results did not show significant effect of Ni-seed treatment (Table 3). However, we found that Ni application of 45 and 90 mg kg⁻¹ via the seeds resulted in respective increases of 67 and 77% in the nitrogenase activity in relation to the control. It was observed an effect of Ni-seed treatments in urease activity. The ureolytic activity increased sharply up to Ni rate of 180 mg kg⁻¹ and then leveled off at higher Ni supply (Figure 4). The urease activity increased by 40, 71, 118, and 143% in relation to the control, respectively, to Ni rates of 45, 90, 135, and 180 mg kg⁻¹.

It was observed a difference in aerial part dry weight (APDW) and grain dry weight (GDW) in function of the Ni doses applied in the seeds (Figures 5A,B). The APDW and GDW increased by 64 and 63%, respectively, with increase in the Ni rate from 0 to 180 mg kg⁻¹. However, GDW and APDW increased, respectively, by 84 and 51% in relation to the control at 45 mg kg⁻¹ Ni via seed treatment. On the other hand, it were observed reductions in the biomass yield by the aerial part and grains at Ni rates higher than 180 mg kg⁻¹ (Figure 5). In relation to nodule mass (Figure 5B), although no significant variation was observed for the Ni rates, the fresh weight of the nodules increased with Ni-seed application from 0 to 45 mg kg⁻¹ (Figure 6). The highest value was observed at the rate of 45 mg kg⁻¹, the same rate that most favored the increase of

the contribution of BNF%, i.e., that most increased the BNF efficiency (Table 3).

DISCUSSION

Early reports as related to increased efficiency of biologic nitrogen fixation (BNF) in legumes, including soybean plants, by supplying of cobalt (Co), molybdenum (Mo), and *Bradyrhizobium* strains seed treatment were published (Hungria et al., 2005, 2006; Campo et al., 2009). Even though there are many studies describing to the importance of nutritional aspects of sulfur (S), iron (Fe), Co, and Mo supply affecting symbiotic nitrogen fixation, the actual evidences on soybean seed treatment with nickel (Ni) and its effect on BNF are unclear and scarce. Therefore, the purpose of the present research was to demonstrate that Ni supply to soybean plants by seed treatment can increase the symbiotic nitrogen fixation effectiveness, directly by the ¹⁵N natural abundance method ($\delta^{15}\text{N}$ ‰) and by measurement of urease activity, as well as indirectly by nitrogenase (N-ase) activity.

Processes in the development of some legume symbioses on the biologic nitrogen fixation (BNF) specifically require calcium, cobalt, copper, iron, potassium, molybdenum, nickel,

phosphorus, selenium, zinc, and boron. Therefore, the low supply of inorganic nutrients may affect effectiveness of nitrogen fixation and then reduce legume yield (O'Hara, 2001; Brear et al., 2013; González-Guerrero et al., 2014). In this sense, we observed that soybean seed treatment with Ni—together with Co, Mo, and *B. japonicum*—increased nutrients and chlorophyll content (SPAD index) in the leaves, urease, and nitrogenase activities taken on the leaves and root nodules, respectively, as well as increased ¹⁵N fixation and N accumulation in the leaves and grains, which in turn result in the visual difference on plant growth from control as compared to Ni-seed treatment of 45 mg kg⁻¹ (Figure 6). It was also observed an increase in the dry weight of aerial parts and grains by Ni-seed supply up to 180 mg kg⁻¹.

We observed a significant effect of the leaf concentrations of all nutrients evaluated in this study for the Ni doses applied via seeds (Table 2). The leaves were sampled at the R1 stage, when a large part of the nutrients in the leaves is remobilized—notably those elements highly mobile in the phloem—to reproductive structures, mainly the flowers, and subsequently to the pods and grains. Except for N, the leaf concentrations of the macronutrients were within the intervals suggested as sufficient for soybean plants and so did not limit the plants' development (Jones, 2003). In relation to micronutrients, except for Cu the values measured in the diagnostic leaves were within the ranges

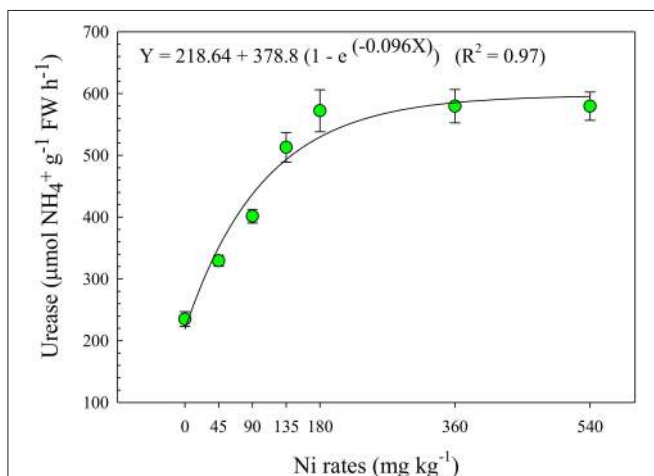


FIGURE 4 | Urease activity taken on the leaves of soybean cultivar *BMX Potência RR*, collected at R1 phenological stage (Fehr et al., 1971), as related to Ni seed treatments (rates). The assessments were taken using the middle third of the diagnostic leaf of plants in phenological stage R1, and the average was computed of four replicates per treatment. Mean ± SD. (Fisher Test, *p* < 0.01).

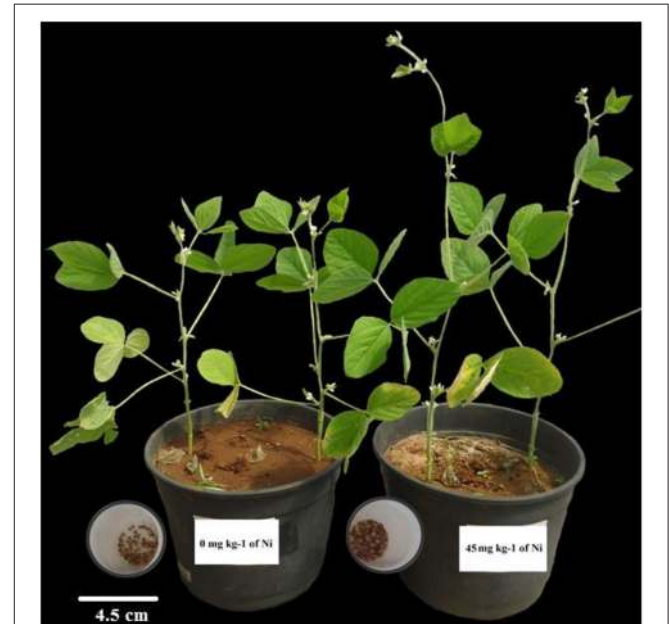


FIGURE 6 | Visual aspects of soybean cultivar *BMX Potência RR* growth at reproductive phenological stage (R1, Fehr et al., 1971) and its fresh nodules collected at this stage, as related to Ni seed treatments of control and Ni rate of 45 mg kg⁻¹.

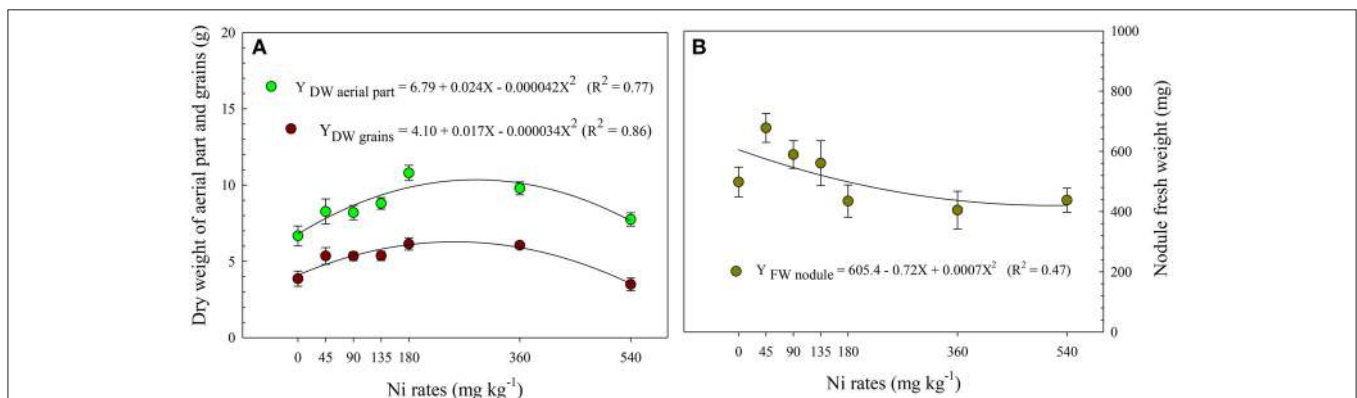


FIGURE 5 | Dry weight of aerial parts and grains (A) and fresh weight of nodules (B) of soybean cultivar *BMX Potência RR* as related to Ni seed treatments (rates). The nodules were collected at R1 phenological stage (Fehr et al., 1971), while aerial parts and grains were collected at phenological stage R7. The average was computed of four replicates per treatment. Mean ± SD. (Fisher Test, *p* < 0.01).

established as suitable (Jones, 2003). According to Gerendas and Sattelmacher (1997) and Gerendas et al. (1999), the ions Cu^{2+} and Zn^{2+} exert an interionic effect of competitive inhibition with the Ni^{2+} in the nutrient absorption process, indicating that these three ions are absorbed through the same ion channels, like ZIP or NRAMP transporter (Lin et al., 2010). However, in this study the effect was inverse, i.e., the application of Ni rates raised the leaf concentrations of Cu and Zn, suggesting that application of Ni in seeds might have had a positive influence by reducing this competitive inhibition (Gerendas and Sattelmacher, 1997; Gerendas et al., 1999) and improving soybean nutritional status.

The application of Ni via seeds proved to be a highly efficient alternative to enrich the concentration of this element in the grains (**Figure 3D**). The application of Ni by seed enrichment should mainly be considered in soils with low Ni levels, in which the plant's response to the element can be positive. It should be noted again that the content of Ni in the seeds should also be considered. In other studies, Ni concentrations similar to those observed in our research were reported for soybean grains by Kutman et al. (2013), who obtained Ni concentrations of 0.04–8.32 mg kg⁻¹ when studying the effect of foliar application.

It is known that ~40% of the dry soybean is composed of protein, resulting in a high demand for N, and that majority of this is supplied by BNF (Alves et al., 2003; Hungria et al., 2006; Luca et al., 2014). In this study, a low Ni rate (45 mg kg⁻¹) stimulated BNF and the affect was most pronounced in the grains, in which it can be noticed that more of 90% of total N accumulated were derived from BNF (**Table 3**). The absence of response of BNF in the aerial part, on early vegetative stage, probably occurred because at the start of development of soybean plants, the symbiosis with bacteria is not yet totally established (Alves et al., 2003). The nodules are small and sparse, and the plant is just starting to establish the infection process, so the demand for N, essential for vegetative growth, is low. In the V2–V3 period (Fehr et al., 1971), the largest part of N is supplied by reserves in the cotyledons, while the absorption by the roots from the soil is still incipient (Alves et al., 2003). In this initial development phase of shoot formation, the soybean plants might have taken up more N from the soil, presenting higher delta ¹⁵N values, near those of the soil, since a large part of the N needed for their development was derived from the N available in the soil (**Table 3**).

On the other hand, in more advanced vegetative stages, when the bacterium-plant symbiosis is better established, the plants obtain most of the N needed from BNF, since the delta ¹⁵N values tend to approach zero, indicating that the N taken up and assimilated comes from atmospheric air (Guimaraes et al., 2008; Urquiaga et al., 2012). In this case, Ni exerts an important role in the BNF process, and the application of Ni in the seeds increased the BNF by an average of 10%, making a significant contribution to the supply of N, mainly in the grains (**Table 3**). It is known that in the BNF process, Ni acts as a structural component of hydrogenase, an enzyme responsible for recapturing the H₂ that is generated by nitrogenase during the process of reducing N₂. In the BNF process, nitrogenase breaks down N₂ and transforms it into NH₃ and H₂ gas (Ureta et al., 2005). The formation of H₂ by the nitrogenase indicates inefficient use of energy that can be

used in fixation of N₂. Furthermore, the high concentrations of H₂ inhibit the activity of nitrogenase and consequently reduce the efficiency of BNF (Ureta et al., 2005). Therefore, the presence of Ni might have favored the activity of hydrogenase, recapturing more H₂, increasing the energy efficiency of the process and hence optimizing the reduction of N₂ and the entire BNF process. Thus, we can consider that there is a positive feedback between the activities of the hydrogenase and nitrogenase, in order to keep the BNF constant and efficient (Zhang et al., 2014).

The ARA is widely used for indirect measurement of the activity of nitrogenase (N-ase) in samples of plants, bacteria and isolated organisms (Boddey et al., 2001). In this study, although the ARA results were not significant, we did observe a response tendency with the presence of Ni. The absence of a statistical difference between the treatments can be explained by the variability of the results, with a high coefficient of variation between the means of the treatments of ~35%. Besides, it has been pointing out that many factors might interfere in this analysis and results, among them temperature, quantity of O₂ in the flask, concentration of acetylene, and limit of detection of the equipment, preventing a statistical difference between the doses (Boddey et al., 2001; Guimaraes et al., 2008).

In general, the presence of Ni significantly enhanced the BNF by the soybean plants and the metabolism of N, favoring the accumulation of N in the grains and aerial part, which can be associated with chlorophyll content (SPAD index) taken on the leaves (**Figure 2**). Kutman et al. (2013) reported an increase of 30% in the N concentration in the new leaves of soybean plants after external application of Ni. It should be considered also that in the process of remobilizing N in old leaves, proteins, and amino acids are degraded in the mitochondria (e.g., action of arginase), resulting in the formation of urea in the cytosol (Gerendas and Sattelmacher, 1997; Gerendas et al., 1999; Cakmak et al., 2010; Witte, 2011). Ni promotes an increase of urease activity, favoring the metabolism of N, and enhancing the remobilization of N from the old to new leaves (Kutman et al., 2013). This also confirms our results observed for the increased activity of urease by applying Ni on seeds (**Figure 4**).

The application of Ni positively influenced the soybean yield. This yield was highest at Ni rates of 45 and 90 mg kg⁻¹, while at higher rates, such as 540 mg kg⁻¹, the grain yield declined, probably due to the toxic effect of Ni (**Figure 5**). Very few studies have been published on the effect of applying nickel via seeds on the development of soybean plants. Most studies report the addition of this element in the soil or a nutrient solution (Kutman et al., 2013), foliar application (Nyczepir and Wood, 2012), or even have considered that the quantity of Ni in the soil and seeds is sufficient to supply the plants' needs. Kutman et al. (2013) observed that application of this micronutrient in the seeds did not promote increased grain productivity, although it did influence the activity of some enzymes analyzed.

CONCLUSIONS

The results of this study provide relevant information because show that the grain yield per plant increased at the lowest Ni rates

applied in the seeds. As also shown, Ni influenced the activity of enzymes that take part in the metabolism of N, and enhanced the biological fixation of N, besides increasing the accumulation of N by the plants.

In general, the presence of Ni in the seeds stimulated the BNF process, probably due to the higher activity of the enzyme hydrogenase. Certainly when the hydrogenase activity increased—confirmed indirectly by determining the activity of nitrogenase (by the indirect ARA), the energy efficiency of BNF increased. The increased contribution of BNF was reflected in higher accumulation of total N in the aerial parts and grains and the increase of urease activity. These benefits, along with the savings of photoassimilates, resulted higher production of APDW and grain yield. Finally, the application of Ni in the seeds should mainly be adopted in sandy soils having low levels of this element and in soils with medium and sandy texture after correction with lime, a common and necessary practice in soils in Cerrado regions in Brazil. The application of Ni via seed treatment

is a viable strategy, since this element can be applied along with the other two micronutrients that are closely associated with the BNF process, Mo and Co. The results of present study demonstrate the contribution of Ni to the BNF process and to higher grain yield. However, other experiments, under controlled and field conditions, with lower Ni rates are necessary.

AUTHOR CONTRIBUTIONS

All authors listed, have made substantial, direct and intellectual contribution to the work, and approved it for publication.

ACKNOWLEDGMENTS

This work was funded by Coordenação de Aperfeiçoamento de Pessoal de Nível Superior (CAPES-Brazil). GC thanks CAPES and JL thanks FAPESP (São Paulo Research Foundation; 2007/58406-1) for the scholarships granted.

REFERENCES

- Alves, B. J. R., Boddey, R. M., and Urquiaga, S. (2003). The success of BNF in soybean in Brazil. *Plant Soil* 252, 1–9. doi: 10.1023/A:1024191913296
- Barrie, A., and Prosser, S. J. (1996). “Automated analysis of light-element stable isotopes by isotope ratio mass spectrometry,” in *Mass Spectrometry of Soils*, eds T. W. Boutton and S. Yamasaki (New York, NY: Marcel Dekker), 1–46.
- Boddey, R. M., Polidoro, J. C., Resende, A. S., Alves, B. J. R., and Urquiaga, S. (2001). Use of the ^{15}N natural abundance technique for the quantification of the contribution of N_2 fixation to grasses and cereals. *Aust. J. Plant Physiol.* 28, 889–895.
- Brear, E. M., Day, D. A., and Smith, P. M. C. (2013). Iron: an essential micronutrient for the legume – rhizobium symbiosis. *Front. Plant Sci.* 4:359. doi: 10.3389/fpls.2013.00359
- Brito, M. M. P., Muraoka, T., and Silva, E. S. (2009). Uptake rate of nitrogen from soil and fertilizer, and n derived from symbiotic fixation in cowpea (*Vigna unguiculata* (L.) walp.) and common bean (*Phaseolus vulgaris* L.) determined using the ^{15}N isotope. *Rev. Bras. Cienc. Solo.* 33, 895–905. doi: 10.1590/S0100-06832009000400014
- Cadisch, G., Hairiah, K., and Giller, K. E. (2000). Applicability of the natural ^{15}N abundance technique to measure N_2 fixation in *Arachis hypogaea* grown on an Ultisol. *Neth. J. Agric. Sci.* 48: 31–45. doi: 10.1016/S1573-5214(00)80003-2
- Cakmak, I., Pfeiffer, W. H., and McClafferty, B. (2010). Biofortification of durum wheat with zinc and iron. *Cereal Chem.* 87, 10–20. doi: 10.1094/CCHEM-87-1-0010
- Campo, R. J., Araujo, R. S., and Hungria, M. (2009). Nitrogen fixation with the soybean crop in Brazil: compatibility between seed treatment with fungicides and bradyrhizobial inoculants. *Symbiosis* 48, 154–163. doi: 10.1007/BF03179994
- Cantarella, H., van Raij, B., and Quaggio, J. A. (1998). Soil and plant analyses for lime and fertilizer recommendations in Brazil. *Commun. Soil Sci. Plant Anal.* 29, 1691–1706. doi: 10.1080/00103629809370060
- Companhia Nacional de Abastecimento (Conab) (2014). *Acompanhamento da Safra Brasileira de Grãos - Safra 2013/14*. (2014). Décimo Segundo Levantamento. 1, 1–127.
- Embrapa (2006). *Sistema Brasileiro de Classificação de Solos*. Rio de Janeiro: Embrapa Solos.
- Embrapa (2011). *Tecnologias de Produção de Soja. Região Central do Brasil 2012 e 2013*. Londrina: Embrapa Soja.
- Fageria, N. K., and Stone, L. F. (2008). “Micronutrient deficiency problems in South America,” in *Micronutrient Deficiencies in Global Crop Production*, ed B. J. Alloway (Dordrecht: Springer), 245–266.
- Fehr, W. E., Caviniss, C. E., Burmood, D. T., and Pennington, J. S. (1971). Stage of development descriptors for soybeans, *Glycine max* (L.) Merrill. *Crop Sci.* 11, 929–931.
- Gerendas, J., Polacco, J. C., Freyermuth, S. K. A., and Sattelmacher, B. (1999). Significance of nickel for plant growth and metabolism. *J. Plant. Nutr. Soil Sci.* 162, 241–256. doi: 10.1002/(SICI)1522-2624
- Gerendas, J., and Sattelmacher, B. (1997). Influence of Ni supply on growth and nitrogen metabolism of *Brassica napus* L. grown with NH_4NO_3 or urea as N source. *Ann. Bot.* 83, 65–71. doi: 10.1006/anbo.1998.0789
- González-Guerrero, M., Matthiadis, A., Sáez, A., and Long, T. A. (2014). Fixating on metals: new insights into the role of metals in nodulation and symbiotic nitrogen fixation. *Front. Plant Sci.* 5:45. doi: 10.3389/fpls.2014.00045
- Guimaraes, A. P., Morais, R. F., Urquiaga, S., Boddey, R. M., and Alves, B. J. R. (2008). *Bradyrhizobium* strain and the ^{15}N natural abundance quantification of biological N_2 fixation in soybean. *Sci. Agric.* 65, 516–524. doi: 10.1590/S0103-90162008000500011
- Hatfield, J., Egli, D. B., Leggett, J. E., and Peaslee, D. E. (1974). Effect of applied nitrogen on the nodulation and early growth of soybeans (*Glycine max* (L.) MERR.). *Agron. J.* 66, 112–114.
- Hogan, M. E., Swift, I. E., and Done, J. (1983). Urease assay and ammonia release from leaf tissues. *Phytochemistry* 22, 663–667. doi: 10.1016/S0031-9422(00)86958-7
- Hungria, M., Franchini, J., Campo, R., Crispino, C., Moraes, J., Sibalidelli, R., et al. (2006). Nitrogen nutrition of soybean in Brazil: contributions of biological N_2 fixation and N fertilizer to grain yield. *Can. J. Plant Sci.* 86, 927–939. doi: 10.4141/P05-098
- Hungria, M., Franchini, J. C., Campo, R. I., and Graham, P. H. (2005). “The importance of nitrogen fixation to soybean cropping in South America,” in *Nitrogen Fixation: Origins, Applications and Research Progress*, ed W. E. Newton (Dordrecht: Springer), 25–42.
- Jensen, E. S., and Hauggaard-Nielsen, H. (2003). How can increased use of biological N_2 fixation in agriculture benefit the environment? *Plant Soil* 252, 177–186. doi: 10.1023/A:1024189029226
- Jones, J. B. Jr. (eds.). (2003). *Agronomic Handbook: Management of Crops, Soils, and Their Fertility*. Boca Raton, FL: CRC Press.
- Klucas, R. V., Hanus, F. J., Russell, S. A., and Evans, H. J. (1983). Nickel: a micronutrient element for hydrogen-dependent growth of *Rhizobium japonicum* and for expression of urease activity in soybean leaves. *Proc. Natl. Acad. Sci. U.S.A.* 80, 2253. doi: 10.1073/pnas.80.8.2253

- Kutman, B. Y., Kutman, U. B., and Cakmak, I. (2013). Nickel-enriched seed and externally supplied nickel improve growth and alleviate foliar urea damage in soybean. *Plant Soil* 363, 61–75. doi: 10.1007/s11104-012-1284-6
- Lin, W., Chai, J., Love, J., and Fu, D. (2010). Selective electrodiffusion of zinc ions in a Zrt-, Irt-like protein, ZIPB. *J. Biol. Chem.* 285, 39013–39020. doi: 10.1074/jbc.M110.180620
- Luca, M. J., Nogueira, M. A., and Hungria, M. (2014). Feasibility of lowering soybean planting density without compromising nitrogen fixation and yield. *Agron. J.* 106, 2118–2124. doi: 10.2134/agronj14.0234
- Malavolta, E., Vitti, G. C., and Oliveira, S. A. (1997). *Avaliação do Estado Nutricional das Plantas. Princípios e Aplicações, 2nd Edn.* Piracicaba: Potafos.
- Nyczepir, A. P., and Wood, B. W. (2012). Foliar nickel application can increase the incidence of peach tree short life and consequent peach tree mortality. *HortScience* 47, 224–227.
- O'Hara, G. W. (2001). Nutritional constraints on root nodule bacteria affecting symbiotic nitrogen fixation: a review. *Aust. J. Exp. Agric.* 41, 417–433. doi: 10.1071/EA00087
- Peoples, M. B., Faizah, A. W., Rerkasem, B., and Herridge, D. F. (1989). *Methods for Evaluating Nitrogen Fixation by Nodulated Legumes in the Field.* Canberra: ACIAR. (ACIAR Monograph, 11).
- Pierozan, C., Favarin, J. L., Almeida, R. E. M., Oliveira, S. M., Lago, B. C., and Trivelin, P. C. O. (2015). Uptake and allocation of nitrogen applied at low rates to soybean leaves. *Plant Soil* 39, 83–94. doi: 10.1007/s11104-015-2468-7
- Quaggio, J. A., Van Raij, B., and Malavolta, E. (1985). Alternative use of SMP buffer solution to determine lime requirement of soils. *Commun. Soil Sci. Plant Anal.* 16, 245–260. doi: 10.1080/00103628509367600
- SAS Institute (2009). *The SAS System for windows. v. 9.2.* Cary, NC: SAS Institute.
- Sentelhas, P. C., Battisti, R., Câmara, G. M. S., Farias, J. R. B., Hampf, A. C., and Nendel, C. (2015). The soybean yield gap in Brazil – magnitude, causes and possible solutions for sustainable production. *J. Agric. Sci.* 153, 1394–1411. doi: 10.1017/S0021859615000313
- Seregin, I. V., and Kozhevnikova, A. D. (2006). Physiological role of nickel and its toxic effects on higher plants. *Russ. J. Plant Physiol.* 53, 257–277. doi: 10.1134/S1021443706020178
- Shearer, G., and Kohl, D. H. (1986). N₂-fixation in field settings: estimations based on natural ¹⁵N abundance. *Aust. J. Plant Physiol.* 13, 699–756.
- Ureta, A. C., Imperial, J., Ruiz-Argueso, T., and Palacios, J. M. (2005). *Rhizobium leguminosarum* Biovar viciae symbiotic hydrogenase activity and processing are limited by the level of nickel in agricultural soils. *Appl. Environ. Microbiol.* 71, 7603–7606. doi: 10.1128/AEM.71.11.7603-7606.2005
- Urquiaga, S., Xavier, R. P., Morais, R. F., Batista, R. B., Sshultz, N., Leite, J. M., et al. (2012). Evidence from field nitrogen balance and ¹⁵N natural abundance data for the contribution of biological N₂ fixation to Brazilian sugarcane varieties. *Plant Soil* 356, 5–21. doi: 10.1007/s11104-011-1016-3
- Van Raij, B., de Andrade, J. C., Cantarella, H., and Quaggio, J. A. (2001). *Análise Química Para Avaliação da Fertilidade de Solos Tropicais.* Campinas: Instituto Agronômico, 285.
- Witte, C. P. (2011). Urea metabolism in plants. *Plant Sci.* 180, 431–438. doi: 10.1016/j.plantsci.2010.11.010
- Zhang, X., Sherman, D. M., and Sherman, L. A. (2014). The uptake hydrogenase in the unicellular diazotrophic *Cyanobacterium cyanothece* sp. Strain PCC 7822 protects nitrogenase from oxygen toxicity. *J. Bacteriol.* 196, 840–849. doi: 10.1128/JB.01248-13

Conflict of Interest Statement: The authors declare that the research was conducted in the absence of any commercial or financial relationships that could be construed as a potential conflict of interest.

Copyright © 2016 Lavres, Castro Franco and de Sousa Câmara. This is an open-access article distributed under the terms of the Creative Commons Attribution License (CC BY). The use, distribution or reproduction in other forums is permitted, provided the original author(s) or licensor are credited and that the original publication in this journal is cited, in accordance with accepted academic practice. No use, distribution or reproduction is permitted which does not comply with these terms.