

 Open access • Journal Article • DOI:10.1111/PADR.12318

Spatial Inequality in Mortality in France over the Past Two Centuries

— [Source link](#) 

Florian Bonnet, [Florian Bonnet](#), [Hippolyte d'Albis](#)

Institutions: [Paris School of Economics](#), [University of Paris](#)

Published on: 11 Feb 2020 - [Population and Development Review](#) (John Wiley & Sons, Ltd)

Topics: [Life expectancy](#)

Related papers:

- [Urbanization and mortality in Britain, c. 1800-50.](#)
- [Have regional inequalities in life expectancy widened within the European Union between 1991 and 2008](#)
- [Cities of over a million people on the mortality map of Russia](#)
- [First phase of life in a coastal town of Sardinia \(1866-1920\)](#)
- [What happened to regional inequality in Britain in the twentieth century](#)

Share this paper:    

View more about this paper here: <https://typeset.io/papers/spatial-inequality-in-mortality-in-france-over-the-past-two-4q09octyx1>



HAL
open science

Spatial Inequality in Mortality in France over the Past Two Centuries

Florian Bonnet, Hippolyte d'Albis

► **To cite this version:**

Florian Bonnet, Hippolyte d'Albis. Spatial Inequality in Mortality in France over the Past Two Centuries. 2018. halshs-01945918

HAL Id: halshs-01945918

<https://halshs.archives-ouvertes.fr/halshs-01945918>

Preprint submitted on 5 Dec 2018

HAL is a multi-disciplinary open access archive for the deposit and dissemination of scientific research documents, whether they are published or not. The documents may come from teaching and research institutions in France or abroad, or from public or private research centers.

L'archive ouverte pluridisciplinaire **HAL**, est destinée au dépôt et à la diffusion de documents scientifiques de niveau recherche, publiés ou non, émanant des établissements d'enseignement et de recherche français ou étrangers, des laboratoires publics ou privés.



PARIS SCHOOL OF ECONOMICS
ÉCOLE D'ÉCONOMIE DE PARIS

WORKING PAPER N° 2018 – 53

Spatial Inequality in Mortality in France over the Past Two Centuries

Florian Bonnet
Hippolyte d'Albis

JEL Codes:
Keywords:



PARIS-JOURDAN SCIENCES ÉCONOMIQUES

48, Bd JOURDAN – E.N.S. – 75014 PARIS
TÉL. : 33(0) 1 80 52 16 00=
www.pse.ens.fr

CENTRE NATIONAL DE LA RECHERCHE SCIENTIFIQUE – ÉCOLE DES HAUTES ÉTUDES EN SCIENCES SOCIALES
ÉCOLE DES PONTS PARISTECH – ÉCOLE NORMALE SUPÉRIEURE
INSTITUT NATIONAL DE LA RECHERCHE AGRONOMIQUE – UNIVERSITÉ PARIS 1

Spatial Inequality in Mortality in France over the Past Two Centuries*

Florian Bonnet[†] Hippolyte d'Albis[‡]

November 23, 2018

Abstract

This article analyzes the evolution of spatial inequalities in mortality across 90 French territorial units since 1806. Using a new database, we identify a period from 1881 to 1980 when inequalities rapidly shrank while life expectancy rose. This century of convergence across territories was mainly due to the fall in infant mortality. Since 1980, spatial inequalities have levelled out or occasionally widened, due mainly to differences in life expectancy among the elderly. The geography of mortality also changed radically during the century of convergence. Whereas in the 19th century high mortality occurred mainly in larger cities and along a line from North-west to South-east France, it is now concentrated in the North, and Paris and Lyon currently enjoy an urban advantage.

*We thank M. Barbieri, R. Edwards, L. Kesztenbaum and H. Pifarré i Arolas for their comments.

[†]Université Paris 1 Panthéon-Sorbonne, Paris School of Economics, florian.bonnet@psemail.eu

[‡]Paris School of Economics, CNRS. Corresponding author. 48 Boulevard Jourdan. 75014 Paris. Tel: 33180521609. Email: hippolyte.dalbis@psemail.eu

1 Introduction

Since 1790, France has been subdivided into *départements*, geographical units whose boundaries have changed little over time. In 2014, the difference in life expectancy at birth between women living in the top *département* (*Aisne*) and the bottom one (*Savoie*) was 3 years 10 months. This gap may seem large, especially for a country where equality figures in the national motto, and public health and welfare policies are among the most extensive in the world. This article puts that gap into perspective by following the development of life expectancy inequalities between French *départements* over the last two centuries.

Most research on spatial inequalities of mortality concerns recent periods and reveals either a levelling out or an increase in inequality. In Germany, for example, Kibele's (2012) regional mortality analysis for 1990-2006 shows that the inequality index has barely varied since 1995. This is due to two countervailing trends: increased inequality in the West German Länder, and convergence to the national mean in the Länder of the former GDR. One can see also Brown and Rees (2006) for Yorkshire, Ezzati et al. (2008) for US counties, Joseph et al. (2009), for Canada, Gächter and Theurl (2011) for Austria, Barbieri and Ouellette (2012) for Canada and the United States, and Janssen et al. (2016) for the Netherlands. In the United Kingdom, Illsley and Le Grand (1993) include a further dimension with an analysis of spatial inequalities at various ages, showing that inequalities of mortality have reduced among younger people and increased among the oldest. In France, Daguet (2006), Barbieri (2013) and Breton et al. (2017) also reveal a stabilisation in the widest gap in female life expectancy between *départements* since 2000 and a widening of the male gap since 1995.

These recent developments differ greatly from those in the historical record. In France, Bonneuil (1997) reconstitutes *département* life expectancies for 1806-1906, showing that the standard deviation of female life expectancy at birth fell throughout the 19th century, with the notable exception of 1851 and 1870. Vallin and Meslé (2005) use his reconstitution to show that *département* convergence was rapid in the closing decades of the 19th century. This pioneering work, however, only marginally examined the development of spatial inequalities. Indeed, the long-term historical trends could not be analyzed because of the lack of data for 1906-1975.

This article uses a new database, presented in Bonnet (2018b), which reconstitutes annual life tables for each French *département* and both sexes for 1901-2014. This period includes the two World Wars, for which the author uses data from new sources on civilian and military deaths and those in deportation. Combining this new base with Bonneuil's (1997), we have analyzed the development of life expectancy inequalities between French *départements* since 1806.

Our first contribution is to characterize the development of inequalities over time and date the three main phases identified. The period from 1806 to 1880 alternates divergence and convergence between regions and rises and falls in national life expectancy. The 1881-1980 period we call the "century of convergence", a fortunate time when inequality shrank and life expectancy rose. Both occurred regularly except for the years of the two World Wars. The third period, 1981-2014, returns to an alternation of convergence and divergence along with a general rise in life expectancy. This alternation also figures in Vallin and Meslé's research (2005), where they hypothesize and identify "Matthew effect" years of divergence when rising life expectancy occurs mainly in those areas where longevity is already highest. Age-group analysis also shows that developments in infant mortality account for most of the reduction in spatial inequalities over the century of convergence. At

present, it is basically inequalities among the oldest people that account for spatial inequalities.

Our second contribution is a geographical analysis of areas of high mortality. We take a number of areas similar in life expectancy profile that have experienced notable change over these two centuries. One striking example is the Northern *départements* in France: they were well ahead in the 19th century but are now well below the national mean. Conversely, the Seine *département*, containing Paris, long suffered an “urban penalty” (Haines, 2001) which has become an “urban advantage” since the 1930s.

Section 2 presents the data and indicators used and describes the main concepts used. Section 3 presents our results and Section 4 concludes.

2 Data and Method

We analyze the dynamics of spatial inequalities in life expectancy in France since 1806. The indicator most commonly used in the literature is life expectancy at birth, calculated from current life tables. Other indicators may also be used. Edwards and Tuljapurkar (2005) use life expectancy at age 10 so as to eliminate the effects of infant mortality. Standardised (Brown and Rees, 2006) or raw mortality rates are also sometimes used in order to eliminate differences between population age structures. In this article, we use life expectancy at various ages that we have calculated from current life tables for French *départements*. We do not analyze inequalities within *départements* but focus on inequalities between *départements*. So life expectancy at a given age shows the number of years of life left for an average individual living in a given *département*.

2.1 Data Sources

We use data from Bonneuil (1997) for 1806-1900 and from Bonnet (2018b) for 1901-2014.

Bonneuil (1997) calculates current life tables for women for each French *département*. These tables are given in five-year age-groups from 0 to 85, and for five-year periods in 1806-1906. Note that deaths and censuses by age-groups are only available from 1856. For 1806-1855, Bonneuil estimates life expectancies using the Ledermann model. He takes life tables and age pyramids for 1856-1906 and total births and deaths for 1806-1906. This gives differing life expectancies at birth for the *départements* but life tables with an identical internal structure: differences in death rates by age are frozen at the 1856 value. Given this limitation, we only use life expectancies at birth for 1806-1856 and entire life tables for 1856-1901.

For 1901-2014 we have life expectancies, mortality rates and population figures at 1 January of each year, for women and men, calculated by Bonnet (2018b), mainly using the Human Mortality Database protocol. The raw data he compiled came from the archives of the French statistical agencies. This database contains previously unavailable information on mortality during the first half of the 20th century. It complements the *département* database in Daguet (2006), which covers the census years during the 1954-1999 period.

In order to aggregate these databases, an analysis was made of the differences in life expectancy at birth between Bonnet (2018b) and Bonneuil (1997) and Daguet (2006). This involved Bonneuil’s data on 1901-1905, where *département* life expectancies are available in both sources. The comparison with Daguet (2006) concerned 1954-1999. Table 1 shows the differences observed for the two periods. For 1901-1905, these

differences are quite large, and life expectancies are on average lower in Bonneuil. For the later period, the differences are small. Life expectancies are slightly lower in Daguet.

Table 1 here.

The two sources used for this study do not present the same variables for mortality rates by age, because Bonneuil (1997) does not give mortality rates above age 90. The Bonnet (2018b) database shows that in 1901-1905 the number of survivors beyond 90 was small (from 0.2% to 2%, depending on year and *département*), and the mortality rates for ages 85 to 90 vary little and are close to 75%. Consequently a mortality rate of 100% was applied to the 90-95 age-group for the years before 1901.

2.2 Geographical Scope

This article examines inequalities in life expectancy between French metropolitan *départements*. The overseas *départements* have not been included because their demographic statistics are much more recent and cannot be extrapolated backwards. In this article, we use the term “national” to describe the situation in metropolitan France.

The number and boundaries of the French metropolitan *départements* have generally varied little since they were created in 1790. What few modifications there have been are due to changes in France’s eastern border and a recent reorganization of the Paris region. In order to have a consistent comparison over time, we have applied the classification of 90 *départements* valid in 1967 (see map in Appendix A1). This required reconstituting the life tables for some *départements* that were absent in certain census years. We used an adjacent *département*, called a reference *département*.

The life tables of the reference *départements* were used to re-estimate those of the missing *départements*. The fit between the tables of each pair of *départements* was analyzed for the closest year for which the data are available. Then specific ratios were calculated and applied to the life tables of the reference *département* for the missing years. In formal terms, $l(x)$ is the number of survivors at age x , indexed by r for the reference *département* or m for the missing *département* and t^* for the reference year or t for the estimated year.

The following formula is applied:

$$\frac{100,000 - l_m^t(x)}{100,000 - l_m^r(x)} = \frac{100,000 - l_m^{t^*}(x)}{100,000 - l_m^{r^*}(x)} \quad (1)$$

from which is calculated the number of survivors in each *département* that is lacking a year’s figures. This is used to calculate the corresponding life expectancy.

Table 2 shows the 10 *départements* for which data are lacking and the reference *département* used for each one.

Table 2 here.

Three *départements* in South-eastern France (*Alpes-Maritimes*, *Haute-Savoie* and *Savoie*) were only created in 1860 when they were transferred to France. So for *Alpes-Maritimes*, with *Var* as its reference *département*,

ratios for mortality rates at each age in the two *départements* for 1861 and 1866 were calculated and then applied to the *Var* 1856 life tables to estimate those of *Alpes-Maritimes* for that year.

In the case of the two *départements* created in 1871 from the territory not annexed by Germany (*Meurthe-et-Moselle* and *Territoire de Belfort*), the same procedure was used to reconstitute data up to 1866. For the three *départements* that were German until the First World War (*Bas-Rhin*, *Haut-Rhin* and *Moselle*), the same was done up to 1900. After that date we have the annual data in Bonnet (2018b) for deaths and population by age. The same assumption is made of stable ratios between missing *département* and reference *département*, but only for those variables. Then the corresponding life expectancies were calculated.

As a result of their large populations, the two *départements* of the Paris region (*Seine* and *Seine-et-Oise*) were divided into seven in 1968. The deaths and population by age in the new *départements* were allocated to the old *départements* in the proportions observed in 1968, the year for which both sets of data are available. This ensures consistency in the data since the totals do not change. The corresponding life expectancies were then calculated.

None of these reconstituted data have any effect on the results given below. The results remain unchanged when the *départements* that required data reconstitution are excluded.

2.3 Indicators of Inequality

There are a large number of indicators that measure inequality in general and inequality in mortality in particular. Mackenbach and Kunst (1987) show that each indicator provides different information. Indicators based on extreme points (gap or ratio between the best-placed and worst-placed individuals) or an interquartile range (gap or ratio between the best-placed $x\%$ and $(100 - x)\%$ worst-placed) differ from indicators that use the entire distribution such as the Gini coefficient or the concentration index. Dissimilarity indices show how much would need to be redistributed among groups for mortality to be the same for all. For example, d'Albis et al. (2014) use the Kullback-Leibler divergence to analyze differences in mortality rates at each age.

In this article two main types of indicator are used. One simple indicator is the Gini coefficient. Another series of indicators are used to analyze specific sections of the *département* life expectancy distribution. By aggregating all the *département* life expectancies, the sum of “total years lived” is defined and a proportion is calculated for a number of *départements* ranked by life expectancy. So the top decile (designated P90-100) contains the 10% of *départements* with the highest life expectancy, the second decile (P80-90) the next 10% and so on. To obtain indicators of inequality similar to those used to analyze spatial disparities, these proportions are compared with what they would be in an even distribution. If the proportion of total years lived by the top 10% is 15% (as opposed to 10% in an even distribution), then the inequality indicator is 50%. This means that the 10% of *départements* with the highest life expectancy have 50% more years of life than they would have if these years were evenly distributed across France. This calculation makes it possible to have homogeneous values for all the inequality indicators, each for a specific interval of the distribution curve.

The question of whether to weight the *départements* in calculating inequalities is not an easy one. French *départements* have relatively similar surface areas but widely varying population densities. In 1901, for example, the estimated density in *Basses-Alpes* (now *Alpes-de-Haute-Provence*) was 16 people per square kilometer, compared with 7,500 in *Seine*. Weighting *départements* by their population assumes that what matters is the

general welfare of individuals, with no emphasis on less populated areas. Conversely, not to apply weighting can be justified for the purposes of public policy, where territorial and political issues prevail. In this article, we have chosen to give unweighted indicators, with each decile comprising 9 *départements*, and the *département* mean does not correspond to the national mean. Weighted indicators are only given if notable differences emerge.

2.4 Convergence Indicators

Our analysis of convergence is essentially graphical, showing the variation of these inequality indicators over time. Any reduction in inequality corresponds to a convergence between *départements* and an increase to a divergence. These graphical analyzes could be supplemented by econometric sigma-convergence analyses (Gächter and Theurl, 2011, Janssen et al., 2016), but these estimates are usually unnecessary. Our approach differs, however, from beta-convergence analyses, where a regression is run between the variation in mortality between two dates and the initial mortality figures. This sort of regression depends too much on the choice of start date.

Any analysis of convergence that does not take account of demographic changes during the period would be simplistic and lead to absurdities. For example, while it is desirable that the *départements* with the lowest life expectancies should converge by catching up, this is not so if the top *départements* reduce their life expectancy. An illustration would be two *départements*, A and B, where A has the highest and B the lowest life expectancy. There are four possible scenarios for changes in A and B's life expectancies. Figure 1 presents them by changes in inequality (convergence and divergence) and changes in average life expectancy (rising or falling).

Figure 1 here.

The first convergence scenario (“upward convergence”) shows a catch-up phase in which B reduces the gap with A by improving its life expectancy. This sort of convergence sees greater consistency across France and a general rise in life expectancy. The second scenario (“downward convergence”) involves a fall in average life expectancy. This would occur if A had a falling life expectancy. This type of convergence is observed particularly in war time.

The first divergence scenario sees a greater rise in A's life expectancy than in B's. This is “Matthew effect” divergence, by which “to him who has will more be given” (Merton, 1968). It may be that advances in technology or medicine are first enjoyed by the more favoured, who thus widen their advance, but the less favoured may catch up later. Vallin and Meslé (2005) describe this alternation between phases of divergence and convergence. The second divergence scenario (“decline divergence”) sees increased inequality and falling average life expectancy. This may occur in particular during epidemics.

3 Results

3.1 The Three Phases of the Reduction of Spatial Inequalities

First the variations in spatial inequalities in life expectancy since 1806 are analyzed. We use the Gini index and the relative share of each decile in the distribution. Figure 2 shows these indicators over time, calculated for women with no population-weighting of *départements*. This is the only graph that can be calculated for the whole period, because from 1806 to 1900 no data are available for *département* male life expectancy or female population.

Figure 2 here.

Figure 2 shows that spatial inequalities in life expectancy have fallen sharply since 1806. The Gini index has fallen from 0.105 to 0.005 in 2014. There is no clear trend in the first half of the 19th century and the fall starts in around 1860 with brief interruptions during the three wars between France and Germany. The absolute range in life expectancy between the top and bottom *départements* shrank from 39 years 1 month in 1856 to 3 years 10 months in 2014. The indicators calculated for the various distribution deciles show that the catching up process was highly effective for the 18 *départements* with the lowest life expectancy (P0-20 in Figure 2). In 1856, they had nearly 40% fewer life years than in an ideal even distribution, compared with 17% in the early 20th century and 1.5% in 2014.

From 1901, the data from Bonnet (2018b) can be used to test the robustness of these indicators by analysing spatial inequalities in life expectancy for men and weighting the *départements* by population. The results for the Gini index are given in Appendix A2. The values of the indicators differ but the general trend is unchanged.

As explained above, it would be simplistic to analyze variations in inequalities in life expectancy without taking account of the development mean life expectancy in France as a whole. For that reason, variations in the Gini index and life expectancy in France were calculated for each five-year period from 1806 to 2014. Point 1806, for example, represents the variations between the two five-year periods 1806-1810 and 1811-1815. The pairs of points obtained for each period are plotted on a four-quadrant diagram (Figure 3). Quadrant II (upper left), for example, contains periods where there is both a reduction in inequalities and a rise in life expectancy.

Figure 3 here.

Figure 3 can be used to identify three phases in the reduction of spatial inequalities in life expectancy. The first phase, 1806-1880, displays non-convergence. In Figure 3 the points from this phase are scattered across the four quadrants. During this period mean life expectancy and inequality went up and down with no real trend perceptible. This came to an end in about 1880, after which life expectancy increased continuously, except for the two World Wars. This marks the second phase, 1881-1980, which may be called the century of convergence. In Figure 3 all these points lie in Quadrant II, except for those affected by the two World Wars, 1911 and 1936. The temporary rise in inequalities during the wars is due to the highly varied exposure of regions to the fighting. For example, in 1944, 40% of deaths in Calvados were due to the bombing associated with

the Normandy landings (Bonnet, 2018a). This century of convergence generally involved a virtuous process whereby inequalities shrink and at the same time mean life expectancy increases. Note that this reduction in inequality began nearly 50 years before the introduction of public insurance systems for illness, old age and death. This noteworthy convergence came to an end in about 1980. There then followed a phase during which mean life expectancy continued to rise while inequalities stopped shrinking. Indeed they even widened from 1996 to 2005, a case of “Matthew effect” divergence (Quadrant I of Figure 3).

Finer analysis of variations in life expectancy inequality since 1980 shows a specific pattern in the least-favoured *départements*. Figure 4 repeats Figure 2 with a focus on 1980-2014. It can be seen that inequalities are indeed much smaller than before. The mean life expectancy in the bottom two deciles is 1.8% less than an even distribution, and the top decile mean is 1.3% higher. However, the curve showing the relative position of the bottom two deciles, which rises until 1995, levels out and even falls from 1996 to 2005.

Figure 4 here.

The evolution of French spatial inequalities that we reveal can be compared with the evolution of inequalities at the international level and between American states. In the first case, we used data from the United Nations Population Division, available for the period 1950-2015, and analyzed the inequalities between the 201 geographical units for the female population. The results are the same depending on whether the geographical units are weighted or not by the population: inequalities decline over the entire period. These results are different from the French case: there has been no rise in inequality over the recent period. In the second case, we used data from the US Mortality Database, available for the period 1959-2015, and analyzed the inequalities between the 51 American states, for the female population. The evolution of spatial inequalities in mortality seems in this case similar to the one observed in the French case: inequalities initially decreased and then increased. The minimum is reached in 1982 with regard to the Gini index. Thus, in the recent period, these results seem to indicate different developments with regard to international inequalities and internal inequalities.

3.2 Infant Mortality and Spatial Inequalities

Next we analyze the role of the various age-groups in the reduction of spatial inequalities. It examines inequalities in life expectancy calculated at selected ages (0, 10, 30, 50 and 70) in 1901–2014. Figure 5 shows the Gini index for life expectancies by reference age and date.

Figure 5 here.

Figure 5 shows a reduction in spatial inequalities over the century whatever the reference age. However, the reduction is greater at lower ages. The age profile of spatial inequalities changes from a U-shape to a rising curve. At present, spatial inequalities are 3 times greater for life expectancy at age 70 than at birth. Two main conclusions may be drawn from this.

First, the reduction in infant mortality played a key role in the fall in spatial inequalities. From 1901 to 2014 the reduction of the Gini index is 85% for life expectancy at birth and 65% at age 10 (the age used by Edwards and Tuljapurkar, 2005 for their international comparisons). The trend in survival rates at age 10 confirms this. Table 3 shows that the number of survivors per 100,000 live births rose substantially, from less than 80,000 to nearly 99,650. Not least, the inequalities between *départements* (as measured by standard deviation) shrank considerably.

Table 3 here.

Second, spatial inequalities at present are mainly due to differences in mortality among the oldest groups. For a given population, the epidemiological transition (Omran, 1971) causes greater variance at higher ages and lesser at lower ages (Robine, 2001). This study shows that it also affects spatial inequalities.

Interestingly, Figure 5 also shows that the trend to smaller inequalities appears to differ by reference age. Whereas the Gini index for life expectancy at birth stops falling in the 1980s, that at age 70 has fallen steadily since 1900. To put this in perspective, life expectancy at age 70 has also risen sharply during this period. It is not credible to use the same age for the start of old age when making historical comparisons (Bourdelaïs, 1993, d'Albis and Collard, 2013). We use Ryder's criterion (1975), defining old age as beginning when someone has a life expectancy of 10 remaining years. For each year since 1900 the age was calculated at which national life expectancy was 10 years. Then the Gini index was calculated for remaining years of life in each *département* at that age. Figure 6 shows the curve of the Gini index calculated in that way and also for a set age of 70. The two curves cross in the year when national life expectancy in France was 10 years. It can be seen that the pattern is quite different and that convergence was achieved much sooner with the new Gini index. The reduction in spatial inequalities among the oldest groups stops in the early 1980s and inequalities appear to have widened again since the 1990s.

Figure 6 here.

3.3 Major Changes in the Geography of Longevity in France

Next we analyze variations in the *département* distribution in order to identify particular patterns in certain areas.

The data for the 90 *départements* contain a mass of information that must be systematised if the main developments are to be understood. In order to establish homogeneous geographical areas and classify these by life expectancy, cluster analysis was used. This is designed to place *départements* in classes as homogeneous as possible with regard to life expectancy during a given period. The point is to minimize variance within each class and maximize it between classes. Consequently, each class does not necessarily comprise the same number of *départements*.

For this analysis we chose to break the data into three classes so as to identify the major trends. We applied clustering to *départements* for four sub-periods.

The first is the non-convergence phase 1806-1880. We then divided our century of convergence into two, 1881-1921 and 1922-1980. The fourth period is that of fairly settled inequalities, 1981-2014. Life expectancy data are smoothed by a moving five-year average and the years of the two World Wars are removed. To ensure that longer life expectancy does not overweight the later years, we use relative life expectancy, dividing the *département* figure by the national one for each year.

Figures 7, 8, 9 and 10 show maps of the French *départements* for each sub-period. Green *départements* are in the “top” group, where life expectancy is highest. Blue *départements* are in the “medium” group and red *départements* in the “bottom” group. The graph next to each map shows the relative life expectancy of each group over the sub-period.

The 1806-1880 period sees France cut in two by a “high mortality diagonal” from *Bretagne* to the Alps. On either side are the *départements* in the top group. This is the whole of North-east France, except for *Seine* (including Paris) and the whole of South-west France. High mortality is concentrated at the ends of the diagonal, in *Bretagne* and the Alps. The graph shows that at the start of the period the bottom group had a mean life expectancy 30% below the national mean. It also shows that inequalities between the groups began falling in 1861.

Figure 7 here.

The 1881-1920 period shows no great difference from the previous one, except that central France joins the top group. High mortality is still at the ends of the diagonal in *Bretagne* and the Alps. Convergence is marked, as the bottom *départements* rapidly catch up, rising from 30% below the national mean to 4% at the end of the period.

Figure 8 here.

Major changes occur in 1921-1980. The whole of Northern France, previously in the top group, now contains the *départements* where mortality is highest. All the *départements* along the Channel join *Bretagne* in the bottom group. Conversely the top group covers a wide area from central to South-west France. Note that convergence between the groups continues to progress apace.

Figure 9 here.

The final period, 1981-2014, shows a France once again cut in two, this time by a line from North-east to South, similar to the *diagonale du vide* (“empty diagonal”) of low population density areas (Gravier, 1947, Oliveau et Doignon, 2016, Breton et al., 2017). The geography of French longevity has totally changed from what it was in the 19th century. The North of France, especially along the Belgian border, is now a high-mortality area, including *départements* like *Nord*, *Ardennes* and *Moselle* that once had the highest life expectancy (Fol, 2012, Laménie 2016). The only exception in the Northern half of France is the *Seine département*, which has moved from the middle group to the top group. The graph for this period now shows no convergence between groups. Indeed the bottom group diverges slightly in 1995-2005. However, the gap

between groups is small compared with what it was two centuries before. The bottom group's mean life expectancy is now 2% below the national mean, and the top group's does not exceed 1% above.

Figure 10 here.

The main changes over the last two centuries have affected the urban *départements*, containing the major cities, and the *départements* of Northern France. Their contrasting experience underlies the changing map of French mortality.

The emblematic urban *département* is *Seine*, comprising Paris. Figure 11 shows its life expectancy relative to the national mean from 1806 on. From 1856, when mortality-by-age data become more reliable, we break down this difference into age-groups (0-5, 5-20, 20-40, 40-65 and 65+). We do this by sequentially replacing *département* mortality rates for each age-group by those of the French national mean. We do not use Arriaga (1984)'s method to improve clarity. Differences are smoothed over 5 years for the same reason.

Figure 11 here.

In the 19th century, life expectancy in Paris was well below the national mean: 18% below in 1816. Haines (2001) calls this the “urban penalty”, which he explains mainly by the spread of infectious disease, made easier by the 2.5-fold increase in population density from 1851 to 1901 (Bonnet, 2018c). Pioneering research by Preston and Van de Walle (1978) shows that the urban penalty in the *départements* like *Seine* (Paris), *Rhône* (Lyon) and *Bouches-du-Rhône* (Marseille) was due to the quality of drinking water. This finding has been expanded by Kesztenbaum and Rosenthal (2017), who show how the gradual extension of sewer systems reduced the high mortality Paris suffered from at that time. Figure 11 confirms the link between density, mortality and poor sanitation by showing that most of this urban penalty in the 19th century comes from high mortality in the 0-5 age-group.

Seine's relative life expectancy improves throughout the 20th century: it catches up with national mortality rates and from the 1940s begins to enjoy an “urban advantage”. This advantage has steadily risen since the 1990s and by 2014 was 0.84% above, equal to 10 months of life expectancy. The urban advantage of modern major cities is due to a number of factors (Vlahov et al., 2005). These cities are home to those with the highest incomes and have the best healthcare facilities (Wen et al., 2003), to the benefit of poorer people via the distribution of health expenditure (Montgomery et al., 2013). Cities also generally have more highly educated residents (Glaeser, 1999, Florida, 2002), and the gap with rural areas is increasing (Berry and Glaeser, 2005). Finally, Figure 11 shows that the urban advantage is due to lower mortality among the oldest residents, and in recent years in the 40-65 age-group.

Other *départements* that include major French cities have similar figures to *Seine*. *Rhône* (Lyon) saw its penalty become an advantage in the 1940s (cf. Appendix Figure 15). However, France's fourth largest city, *Lille*, has gone the other way. It has followed the other *départements* of Northern and North-east France severely affected by the region's industrial decline (Zukin, 1985). Figure 12 shows relative life expectancy over time in *Nord*, which contains the city of *Lille*, and Figure 16 in the Appendix that of neighbouring *Pas-de-Calais*. *Nord* enjoyed a favourable position throughout the 19th century, except for the decade around the

Franco-Prussian war, 1866-1876. This was mainly due to lower infant mortality than other regions. Starting in the 1930s, its position slipped: life expectancy in *Nord* fell below the national mean, increasingly so until the mid-1970s, when the gap was 2.5%, some 2 years. At present this gap seems to be shrinking but is still wide. It is no longer due to infant mortality, which is now insignificant in all regions, but rather to mortality after age 40. The impact of the 40-65 age-group is noticeable, accounting for 25% of the total despite extremely low mortality rates at those ages.

Figure 12 here.

Conclusion

We have shown in this article that inequalities of mortality across French *départements* have considerably narrowed over the last two centuries. This trend includes a century of convergence beginning in around 1880. Only the two World Wars temporarily halted the trend. The century of convergence occurred in parallel with an increase in national mean life expectancy, in a virtuous process whereby the *départements* with the lowest life expectancy gradually caught up with the others. At present the gap between top and bottom *départements* is only 3 years 9 months, whereas it was nearly 40 years in the middle of the 19th century. However, during the last 40 years, spatial inequalities of mortality have levelled out, indeed slightly increased in 1995-2005. This is due to the worsening relative position of the bottom two deciles of *département* life expectancy. Our analysis shows that during this period, the top group of *départements* had improving mortality rates, unlike the bottom group. But although spatial inequalities continue to exist and are not reducing, this is nothing like the position in the years after the French Revolution.

Our spatial analysis identifies the shifts in France's demographic map over these two centuries. Although the South-west has remained an area of low mortality and *Bretagne* one of high mortality, other regions have moved about. We have analyzed two types of *département* that have moved in opposite directions. The urban *départements*, hit by an "urban penalty" until the Second World War, now enjoy an "urban advantage", and their residents live on average 1% longer than the national mean. Conversely, the *départements* in Northern France, particularly *Nord* and *Pas-de-Calais*, now have life expectancies some 2% shorter than the mean. The gap is due to higher mortality among the over-65s and the 40-65 age-group. This observation is especially remarkable because these areas were ahead of the others throughout the 19th century, with life expectancies varying from 4% to 6% above the national mean.

The demographic data at our disposal have enabled us to characterize the variations in spatial inequalities of mortality from 1806 to 2014. This is a crucial matter because inequalities in life expectancy between regions cannot be justified by public policy: there is no reason some people should die younger than others according to the *département* where they live. Health is one of an individual's set of capabilities, like income, that enable them to attain their personal goals. Public authorities are thus duty bound to seek to reduce these spatial inequalities. At present this means improving health in the *départements* of Northern France. For that purpose it is essential to examine the determining factors behind spatial inequalities in life expectancy. It would be

useful to correlate our databases with epidemiological databases in order to have causes of death within the same spatial boundaries we have used. Similarly, historical socio-economic databases would be invaluable for understanding the patterns in inequalities of mortality, and thus give some perspective to recent research by Currie and Thulliez (2018).

References

- Arriaga, E. E. (1984). Measuring and Explaining the Change in Life Expectancies. *Demography* 21(1), 83–96.
- Barbieri, M. (2013). La mortalité départementale en France. *Population* 68(3), 433–479.
- Barbieri, M. and N. Ouellette (2012). La démographie du Canada et des Etats-Unis des années 1980 aux années 2000. *Population* 67(2), 221–328.
- Berry, C. R. and E. L. Glaeser (2005). The Divergence of Human Capital Levels across Cities. *Papers in Regional Science* 84(3), 407–444.
- Bonnet, F. (2018a). Beyond the Exodus of May-June 1940: Internal Migrations in France during the Second World War. *mimeo*.
- Bonnet, F. (2018b). Computations of French Lifetables by Département, 1901–2014. *mimeo*.
- Bonnet, F. (2018c). Spatial Distribution of Populations by Age, 1851–2014. *mimeo*.
- Bonneuil, N. (1997). *Transformation of the French Demographic Landscape 1806-1906*. Oxford England Clarendon Press.
- Bourdelaïs, P. (1993). *L'Age de la vieillesse*. Odile Jacob.
- Breton, D., M. Barbieri, H. d'Albis, and M. Mazuy (2017). L'évolution démographique récente de la France : de forts contrastes départementaux. *Population* 72(4), 583–651.
- Brown, D. and P. Rees (2006). Trends in Local and Small Area Mortality and Morbidity in Yorkshire and the Humber: Monitoring Health Inequalities. *Regional Studies* 40(5), 437–458.
- Currie, J., H. Schwandt, and J. Thuilliez (2018). Pauvreté, Egalité, Mortalité: Mortality (in) Equality in France and the United States. Technical report, National Bureau of Economic Research.
- Daguet, F. (2006). Dans quelles régions meurt-on le plus tard au début du XXIème siècle ? *Insee première* (1114).
- d'Albis, H. and F. Collard (2013). Age Groups and the Measure of Population Aging. *Demographic Research* 29, 617–640.
- d'Albis, H., L. J. Esso, and H. Pifarré i Arolas (2014). Persistent Differences in Mortality Patterns across Industrialized Countries. *PLoS one* 9(9), e106176.
- Edwards, R. D. and S. Tuljapurkar (2005). Inequality in Life Spans and a New Perspective on Mortality Convergence across Industrialized Countries. *Population and Development Review* 31(4), 645–674.
- Ezzati, M., A. B. Friedman, S. C. Kulkarni, and C. J. Murray (2008). The Reversal of Fortunes: Trends in County Mortality and Cross-County Mortality Disparities in the United States. *PLoS Med* 5(4), e66.

- Florida, R. (2002). The Economic Geography of Talent. *Annals of the Association of American geographers* 92(4), 743–755.
- Fol, S. (2012). Urban Shrinkage and Socio-Spatial Disparities: Are the Remedies Worse than the Disease? *Built Environment* 38(2), 259–275.
- Gächter, M. and E. Theurl (2011). Health Status Convergence at the Local Level: Empirical Evidence from Austria. *International Journal for Equity in Health* 10(1), 34.
- Glaeser, E. L. (1999). Learning in Cities. *Journal of Urban Economics* 46(2), 254–277.
- Gravier, J.-F. (1947). *Paris et le désert français: décentralisation, équipement, population*. Flammarion.
- Haines, M. R. (2001). The Urban Mortality Transition in the United States, 1800–1940. *Annales de Démographie Historique* 1, 33–64.
- Illsley, R. and J. Le Grand (1993). Regional Inequalities in Mortality. *Journal of Epidemiology and Community Health* 47(6), 444–449.
- Janssen, F., A. van den Hende, J. A. de Beer, and L. J. van Wissen (2016). Sigma and Beta Convergence in Regional Mortality: A Case Study of the Netherlands. *Demographic Research* 35, 81–116.
- Joseph, K., L. Huang, S. Dzakpasu, and C. Mc Court (2009). Regional Disparities in Infant Mortality in Canada: a Reversal of Egalitarian Trends. *BMC Public Health* 9(1), 4.
- Kesztenbaum, L. and J.-L. Rosenthal (2017). Sewers' Diffusion and the Decline of Mortality: The Case of Paris, 1880–1914. *Journal of Urban Economics* 98, 174–186.
- Kibele, E. U. (2012). *Regional mortality differences in Germany*. Springer Science & Business Media.
- Laménie, B. (2016). Les territoires industriels face aux effets cumulés du déclin démographique et économique: quelles perspectives avec la métropolisation?. l'exemple des ardennes. *Espace populations sociétés. Space populations societies* (2015/3-2016/1).
- Mackenbach, J. P. and A. E. Kunst (1997). Measuring the Magnitude of Socio-economic Inequalities in Health: an Overview of Available Measures Illustrated with two Examples from Europe. *Social Science & Medicine* 44(6), 757–771.
- Merton, R. K. (1968). The Matthew Effect in Science: The Reward and Communication Systems of Science Are Considered. *Science* 159(3810), 56–63.
- Oliveau, S. and Y. Doignon (2016). La diagonale se vide? Analyse spatiale exploratoire des décroissances démographiques en France métropolitaine depuis 50 ans. *Cybergeog: European Journal of Geography*.
- Omran, A. R. (1971). The Epidemiologic Transition: a Theory of the Epidemiology of Population Change. *Milbank Memorial Fund Quarterly* 49, 509–538.

- Preston, S. H. and E. Van de Walle (1978). Urban French mortality in the 19th century. *Population studies* 32(2), 275–297.
- Robine, J.-M. (2001). Redéfinir les phases de la transition épidémiologique à travers l'étude de la dispersion des durées de vie: le cas de la France. *Population (french edition)*, 199–221.
- Ryder, N. B. (1975). Notes on Stationary Populations. *Population Index*, 3–28.
- Vallin, J. and F. Meslé (2005). Convergences and Divergences: an Analytical Framework of National and Sub-National Trends in Life Expectancy. *Genus* 61(1), 83–124.
- Vlahov, D., S. Galea, and N. Freudenberg (2005). The Urban Health "Advantage". *Journal of Urban Health* 82(1), 1–4.
- Zukin, S. (1985). The Regional Challenge to French Industrial Policy. *International Journal of Urban and Regional Research* 9(3), 352–367.

Appendices

A1: Map of the 90 French *Départements* in 1967

Figure 13 here.

A2: Inequalities by Sex over the 1901-2014 Period, with *Départements* Weighted and Unweighted by Population

The Gini index shows a reduction in spatial inequalities of mortality since 1901 irrespective of sex or population weighting. It can be seen that inequalities have been reduced more for women than men, with a gap of some 7 points. Note also the various crises that have affected the sexes differently. The First World War temporarily increased inequalities among men but not women. Conversely, the Spanish influenza epidemic of 1919-1920 increased inequalities for both sexes, as did the Second World War. Bonnet (2018b) points out, however, that the data for the two World Wars are not entirely reliable, especially for men.

Figure 14 here.

A3: Difference in Life Expectancy between Rhône and French National Mean, 1806-2014

The “urban penalty” for Rhône *département*, important in the 19th century – it reached 14% around 1850s – fell sharply to insignificant levels in the 1940s. Since then the *département* has enjoyed an “urban advantage” due at present to lower mortality above age 65 and to a lesser extent in the 40-65 age-group. Calculations were made for female life expectancy smoothed over 5 years. The weight of each age-group was isolated by sequentially replacing *département* mortality rates for each group by those of the national mean.

Figure 15 here.

A4: Difference in Life Expectancy between Pas-de-Calais and French National Mean, 1806-2014

Until the start of the 20th century, the Pas-de-Calais *département* had a life expectancy above the French national mean. Since then it has suffered from worse mortality by some 2%. In the last 40 years this gap has levelled out and is entirely due to higher mortality among those aged 40 and above.

Figure 16 here.

Table 1: DIFFERENCES IN LIFE EXPECTANCIES AT BIRTH (IN %): BONNEUIL-BONNET 1901–1906; DAGUET-BONNET 1954–1999

	Men			Women		
	Quart. 1	Med.	Quart. 3	Quart. 1	Med.	Quart. 3
1901–1905				0.49	3.34	6.05
1954	0.18	0.65	1	0.54	0.84	1.34
1962	0	0.4	0.72	-0.01	0.37	0.68
1968	0.17	0.38	0.73	-0.02	0.33	0.78
1975	-0.17	0.15	0.5	-0.11	0.19	0.47
1982	0.01	0.27	0.59	0.04	0.21	0.5
1990	0.09	0.31	0.55	0.21	0.4	0.62
1999	0.22	0.49	0.73	0.47	0.66	0.99

Notes: 25% of the differences are below the threshold “Quart. 1”. “Med.” is the usual median. Sample includes 90 *départements*.

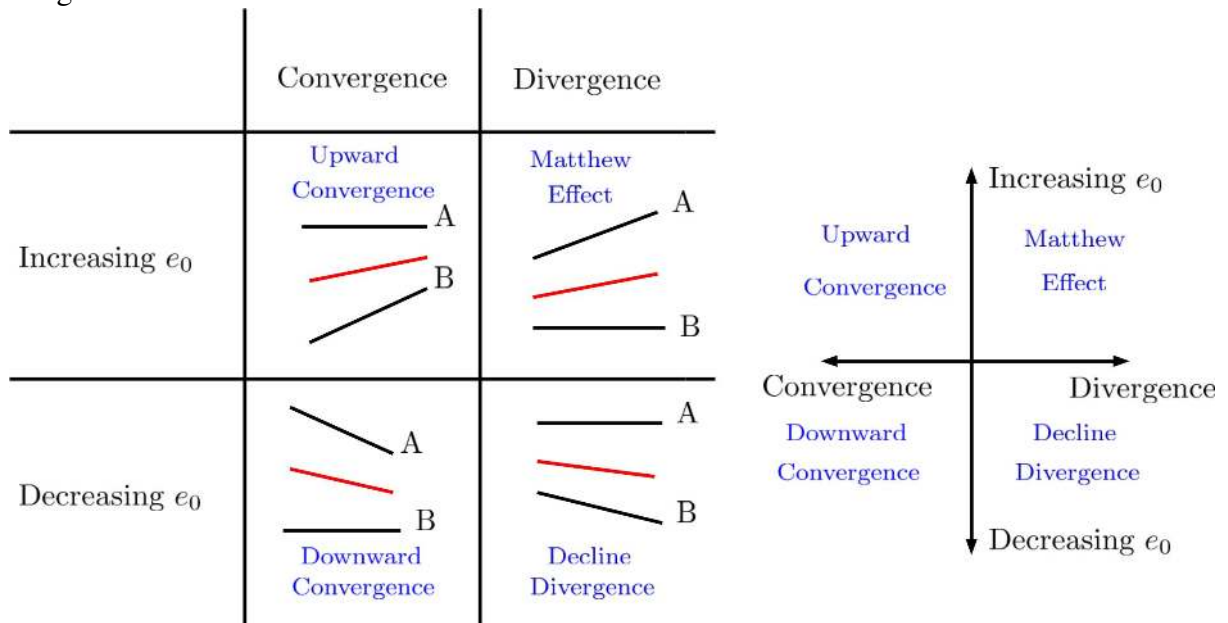
Table 2: DEPARTEMENTS WITH MISSING DATA

<i>Département</i>	Period with missing data	Reference <i>départements</i>
<i>Alpes-Maritimes</i>	1806–1856	<i>Var</i>
<i>Meurthe-et-Moselle</i>	1806–1866	<i>Meuse</i>
<i>Savoie</i>	1806–1856	<i>Ain</i>
<i>Haute-Savoie</i>	1806–1856	<i>Ain</i>
<i>Territoire de Belfort</i>	1806–1866	<i>Meuse</i>
<i>Moselle</i>	1866–1920	<i>Meuse</i>
<i>Bas-Rhin</i>	1866–1920	<i>Meuse</i>
<i>Haut-Rhin</i>	1866–1920	<i>Meuse</i>
<i>Seine</i>	1969–2014	(*)
<i>Seine-et-Oise</i>	1969–2014	(*)

Notes: Reference *départements* are *départements* used to estimates values for missing *départements*.

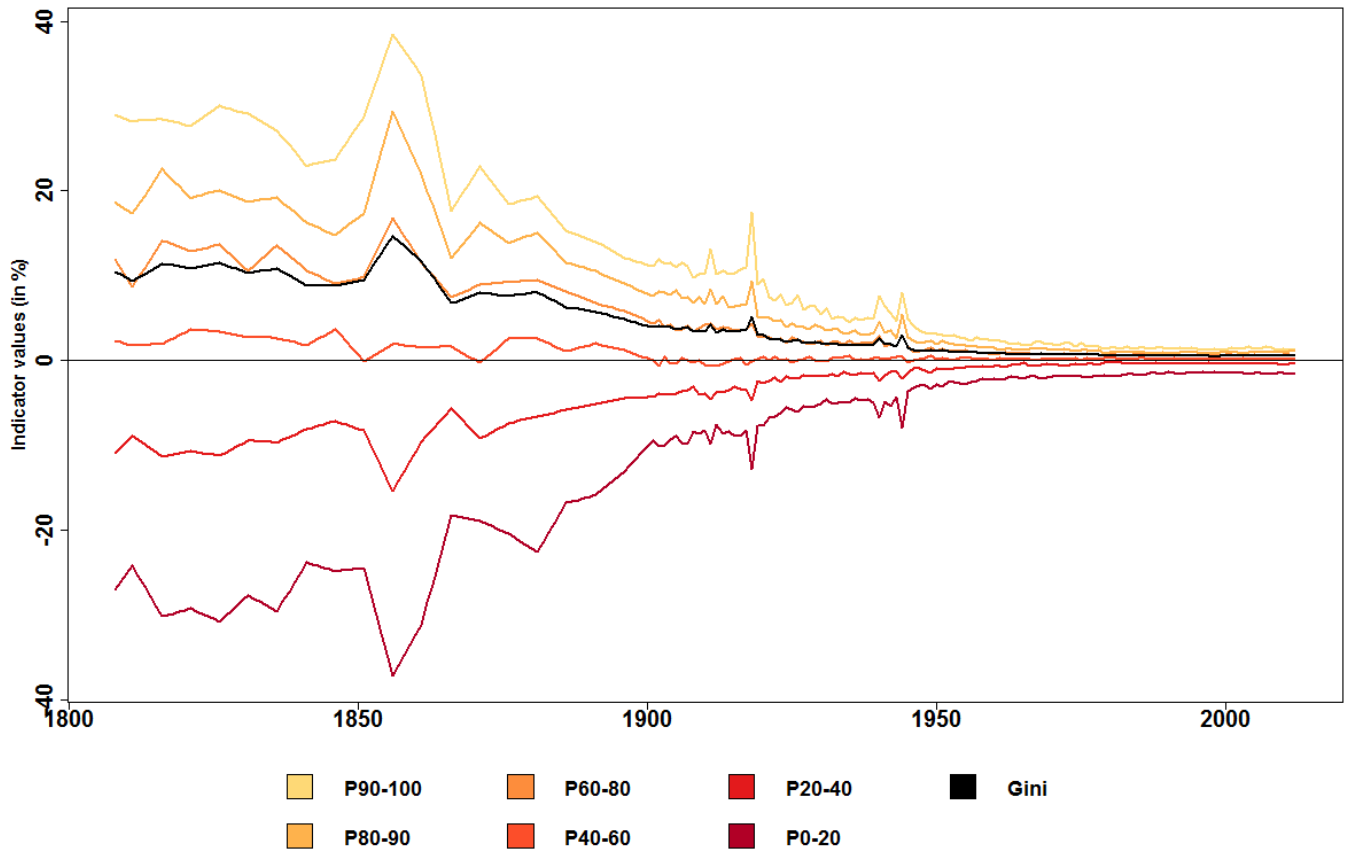
(*) Sum of *Essonne*, *Hauts-de-Seine*, *Seine-Saint-Denis*, *Val-de-Marne*, *Val d’Oise*, *Paris*, *Yvelines*.

Figure 1: DIVERGENCE AND CONVERGENCE PERIODS: THEORETICAL CLASSIFICATION



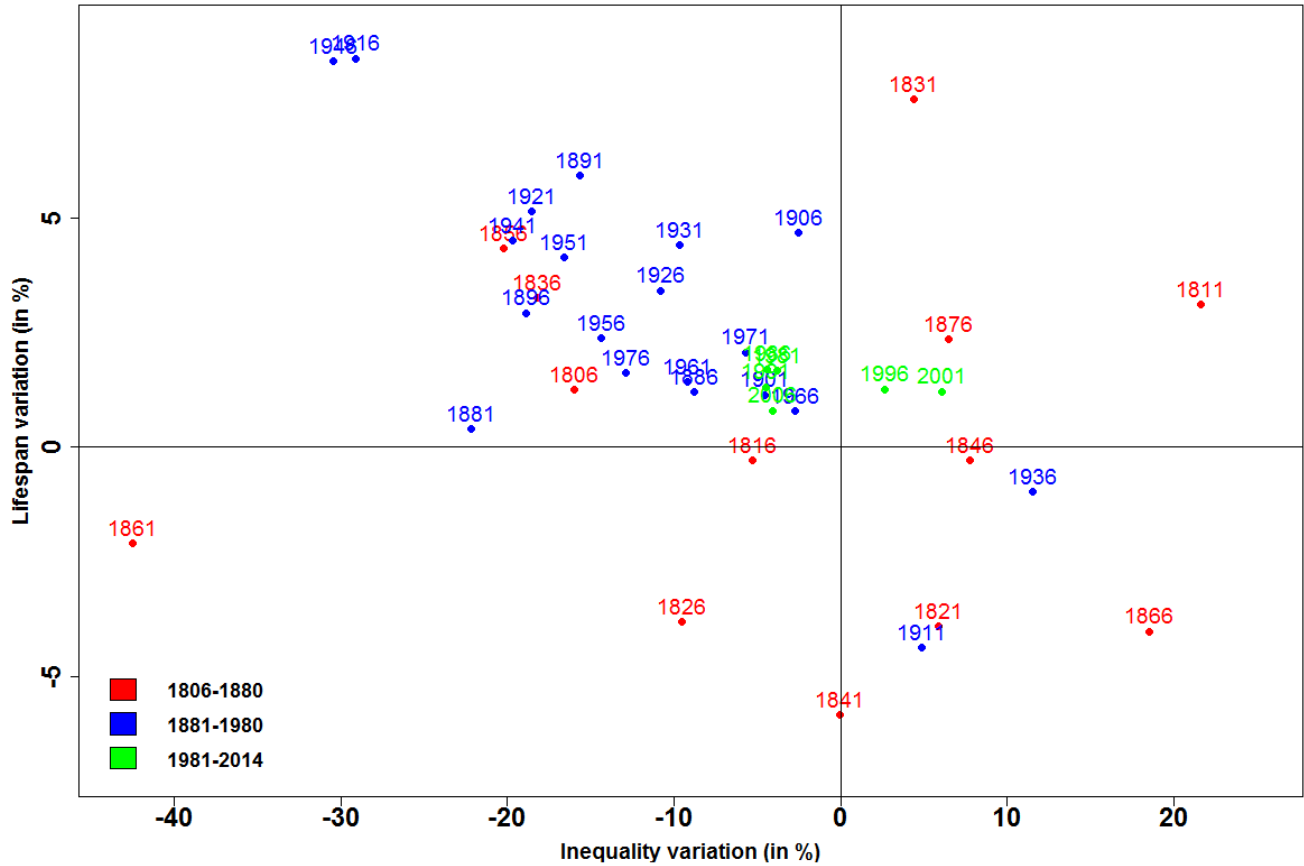
Notes: Convergence is a decrease in life expectancy inequalities between *départements*. Increasing in e_0 is an increase of national life expectancy. National life expectancy is the life expectancy mean of our sample. Sample includes 90 *départements*.

Figure 2: SPATIAL INEQUALITIES, 1806–2014



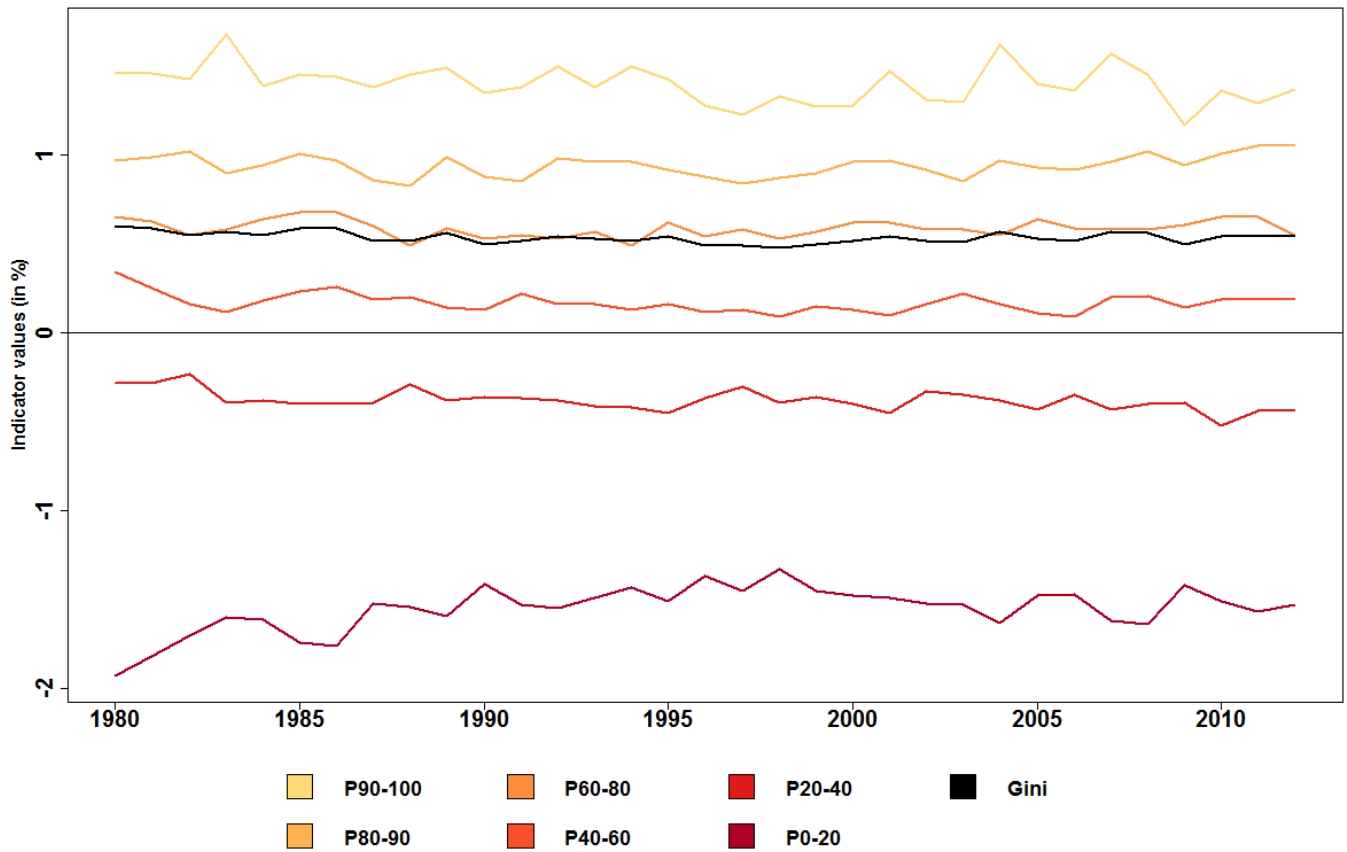
Notes: P90-100 means the share of life expectancy lived by the 10% of *départements* with the highest values (compared with a uniform life expectancy for all *départements*). All inequality indicators are non-weighted by population, for women. Sample includes 90 *départements*.

Figure 3: THE THREE PHASES OF THE CONVERGENCE PROCESS, 1806–2014



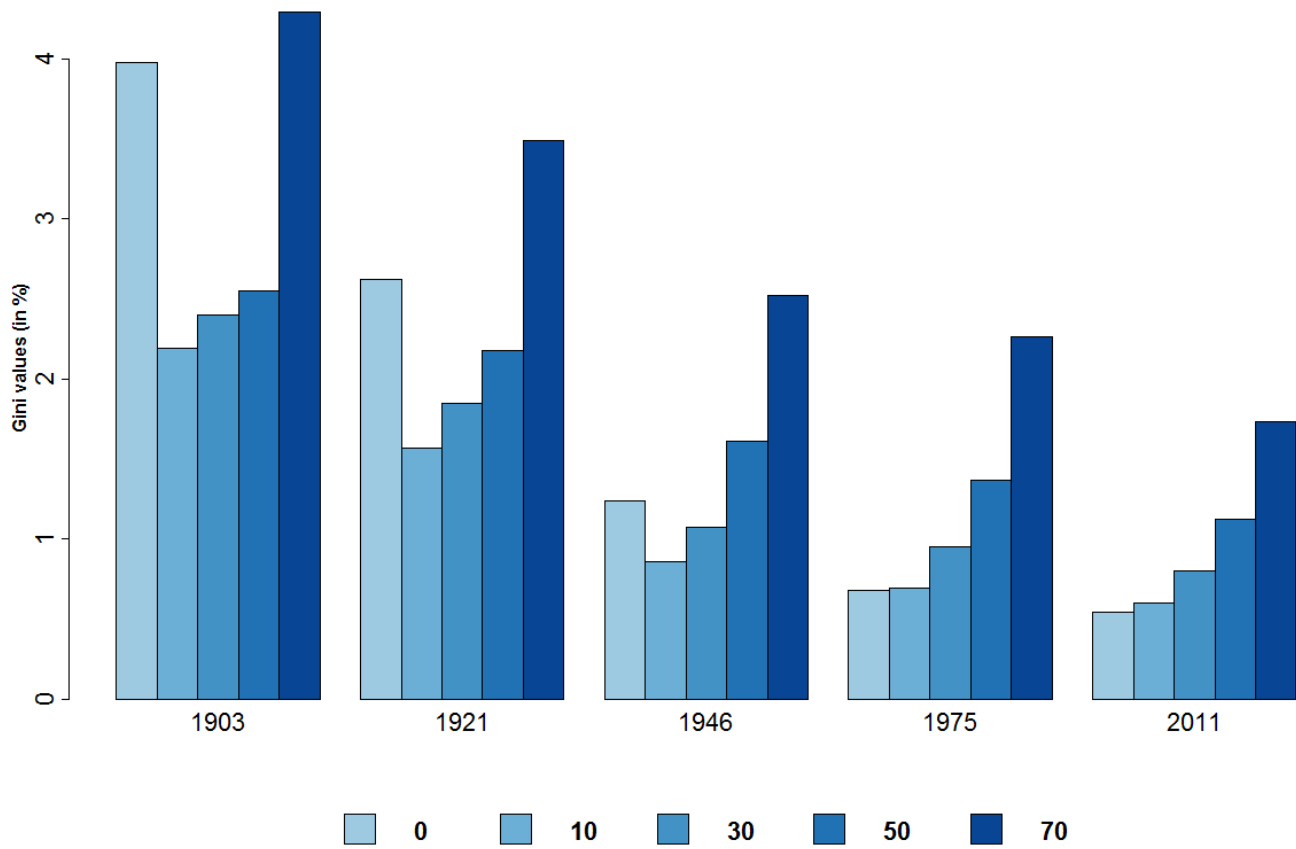
Notes: Variation of the national life expectancy for year 1806 is the variation of life expectancy between the 1806–1810 quinquennial period and the 1811–1815 one. We used the quadriennial period 2011–2014 for the 2006 point. Gini indicator is non-weighted by population, for women. Sample includes 90 départements.

Figure 4: SPATIAL INEQUALITIES, 1980–2014



Notes: P90-100 means the share of life expectancy lived by the 10% of *départements* with the highest values (compared with a uniform life expectancy for all *départements*). All inequality indicators are non-weighted by population, for women. Sample includes 90 *départements*.

Figure 5: GINI INDEXES BY AGE AND DATE



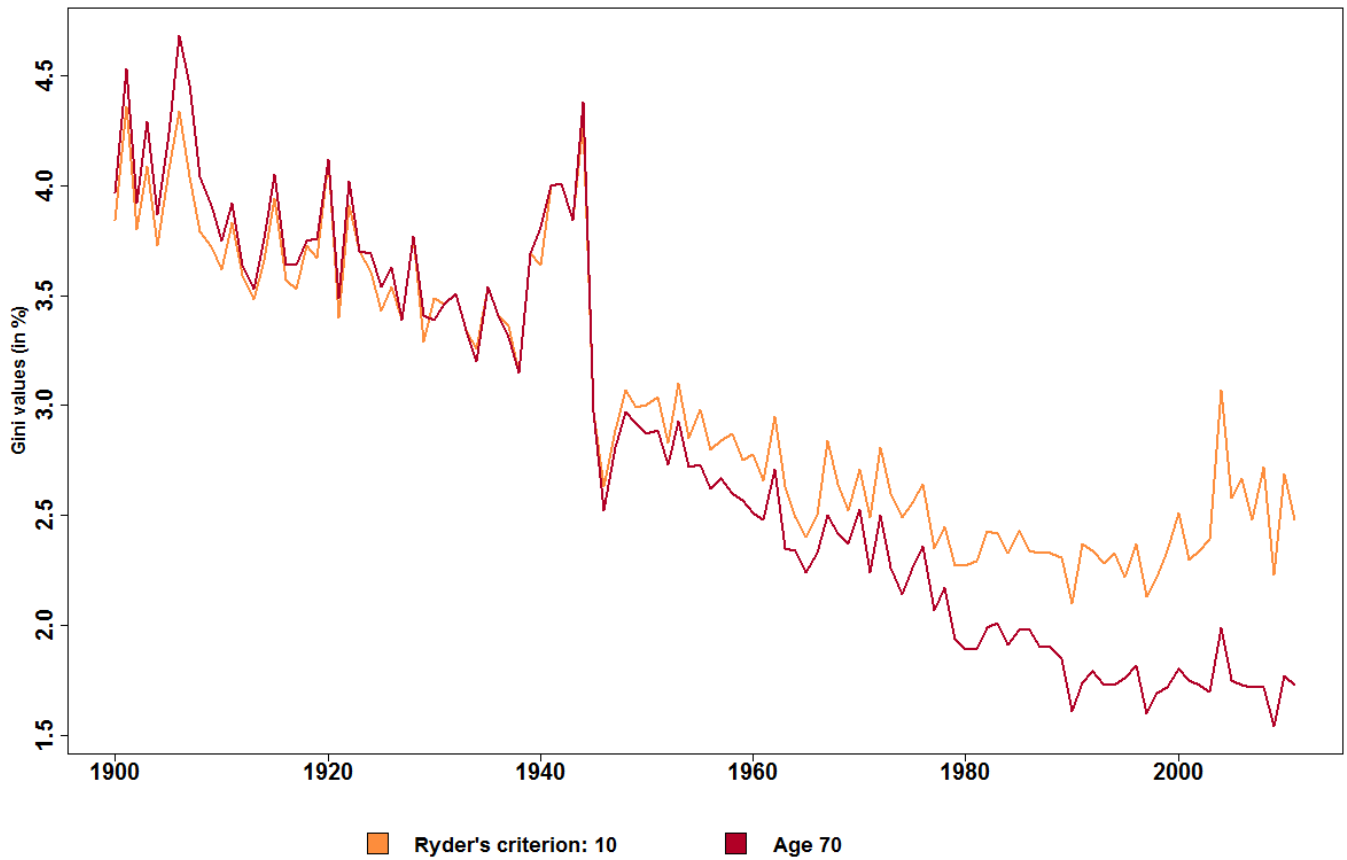
Notes: “10” means the Gini of the life expectancies at age 10. Gini is non-weighted by population, for women. Sample includes 90 départements.

Table 3: NUMBER OF SURVIVORS AT AGE 10 FOR 100,000 BIRTHS

	1901	1921	1946	1975	2011
National average	79,940	84,712	90,935	98,508	99,646
Standard deviation	3,734	2,596	1,396	302	127

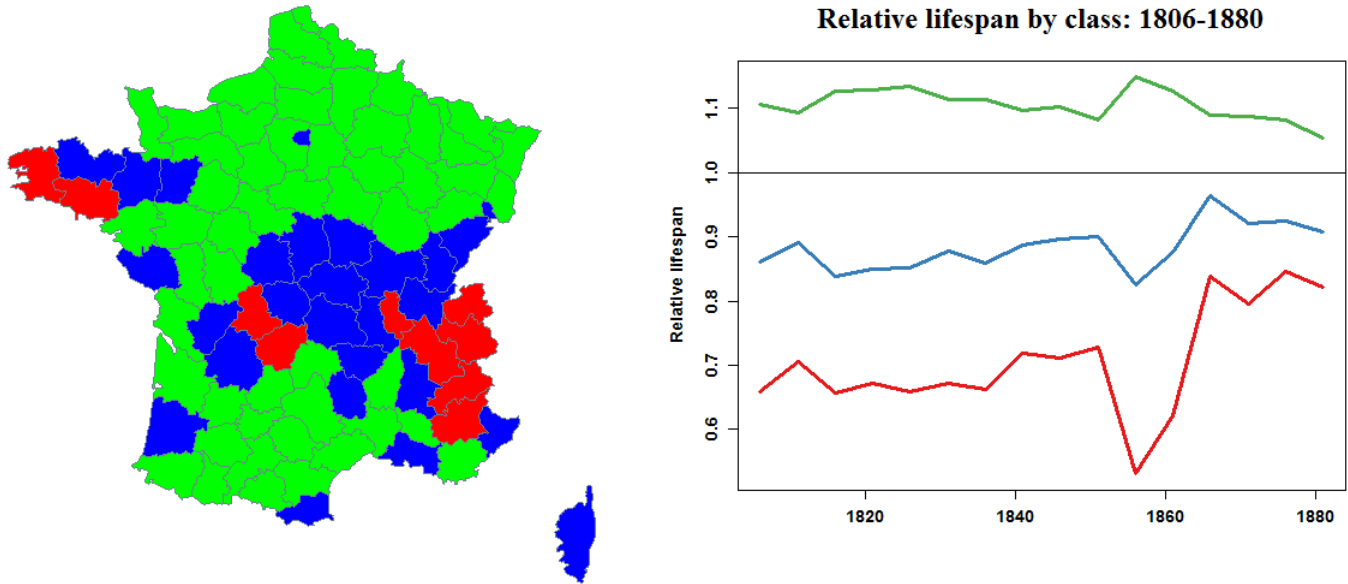
Notes: Sample includes 90 *départements*. Standard deviation non-weighted by population, for women.

Figure 6: GINI INDEX AT AGE 70 AND COMPUTED USING RYDER'S CRITERION



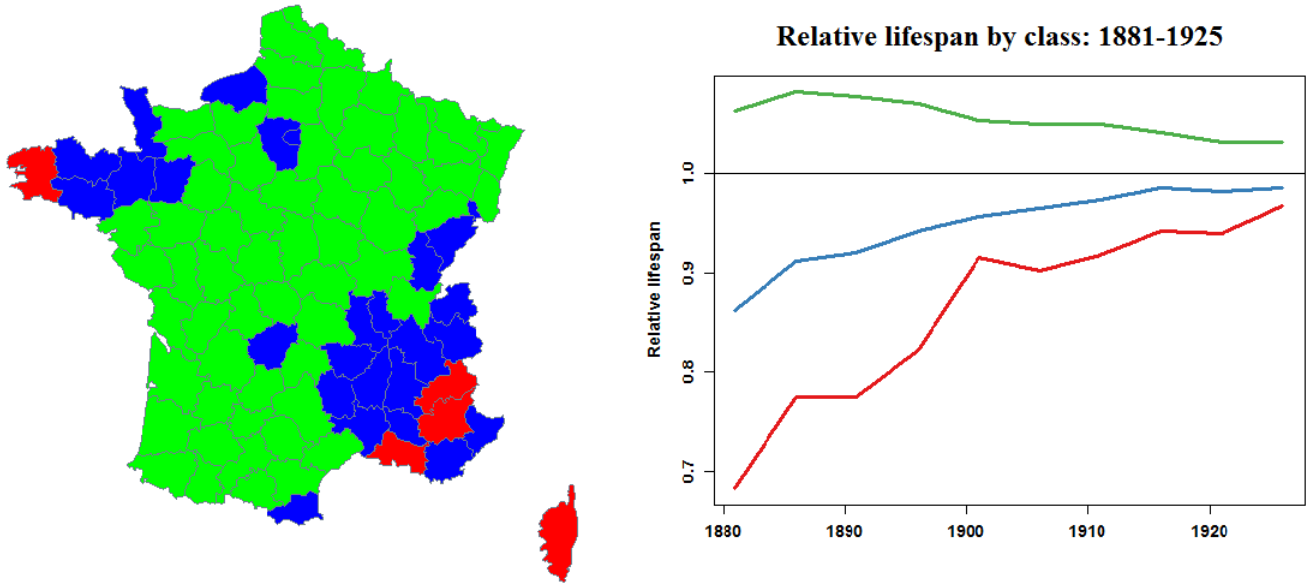
Notes: Ryder's criterion is the Gini of life expectancies at a moving age defined such as the remaining life expectancy at the national level is 10 years. Age 70 means the Gini of departmental life expectancy at age 70. Gini is non-weighted by population, for women. Sample includes 90 départements.

Figure 7: INEQUALITY CLUSTERING, 1806–1880



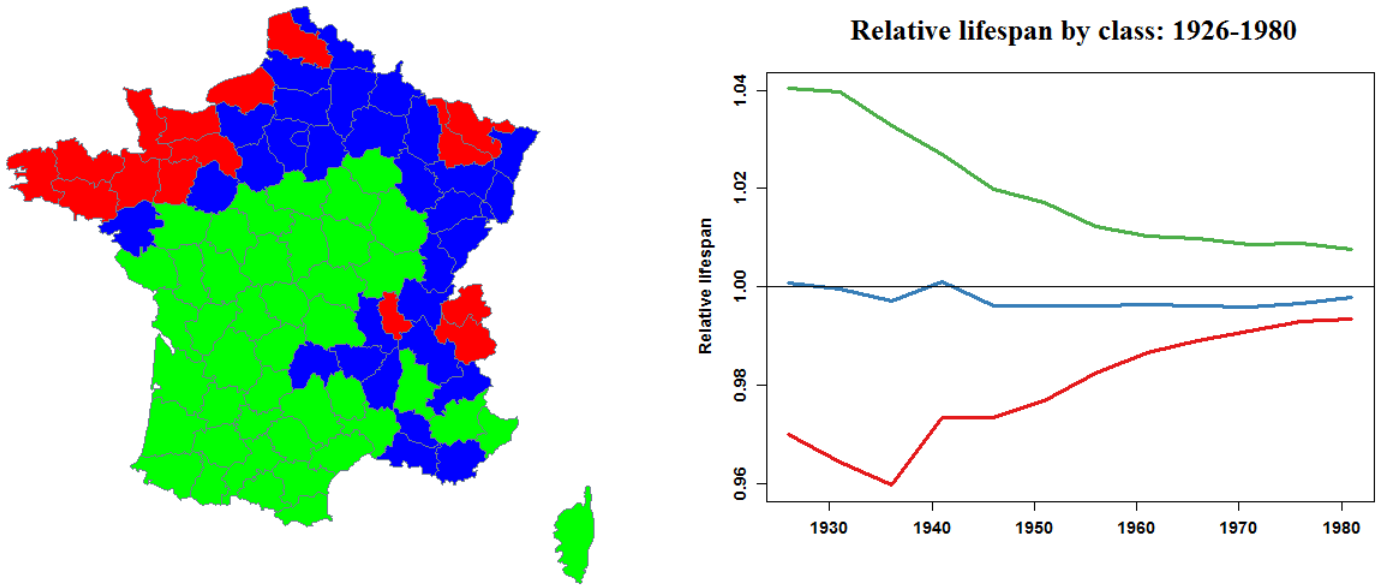
Notes: The green and red classes contain *départements* with the highest and lowest life expectancy respectively. Clustering computations based on 5-year smoothed life expectancy. Sample includes 90 *départements*.

Figure 8: INEQUALITY CLUSTERING, 1881–1925



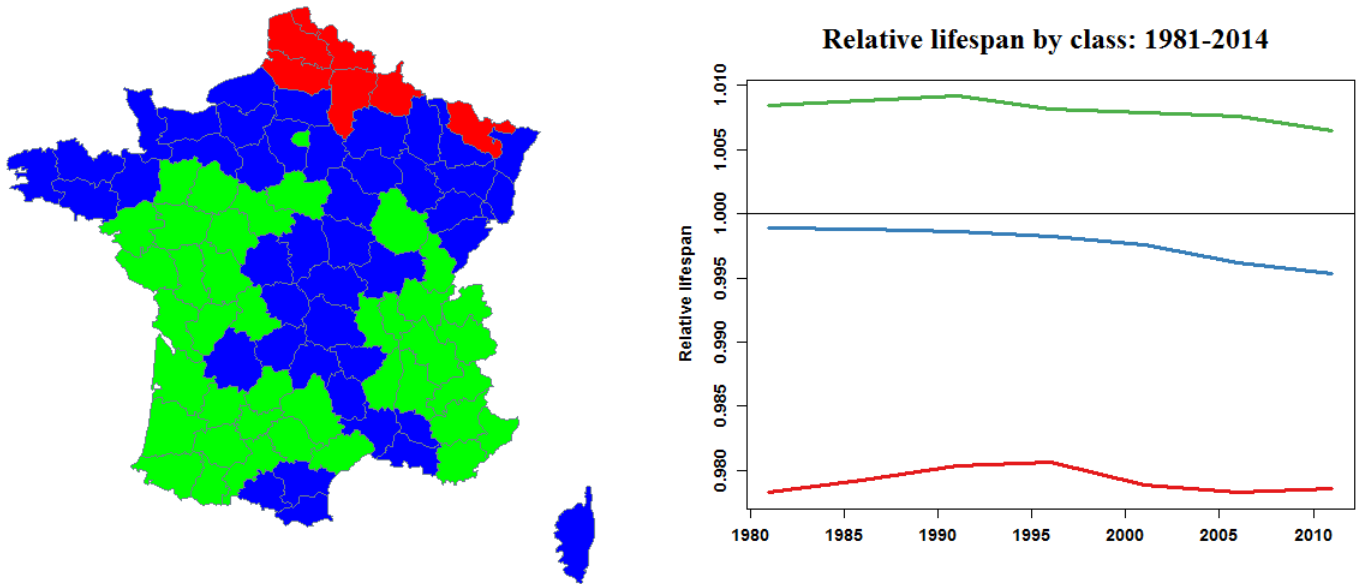
Notes: The green and red classes contain *départements* with the highest and lowest life expectancy respectively. Clustering computations based on 5-year smoothed life expectancy, and without war values (1914–1918). Sample includes 90 *départements*.

Figure 9: INEQUALITY CLUSTERING, 1926–1980



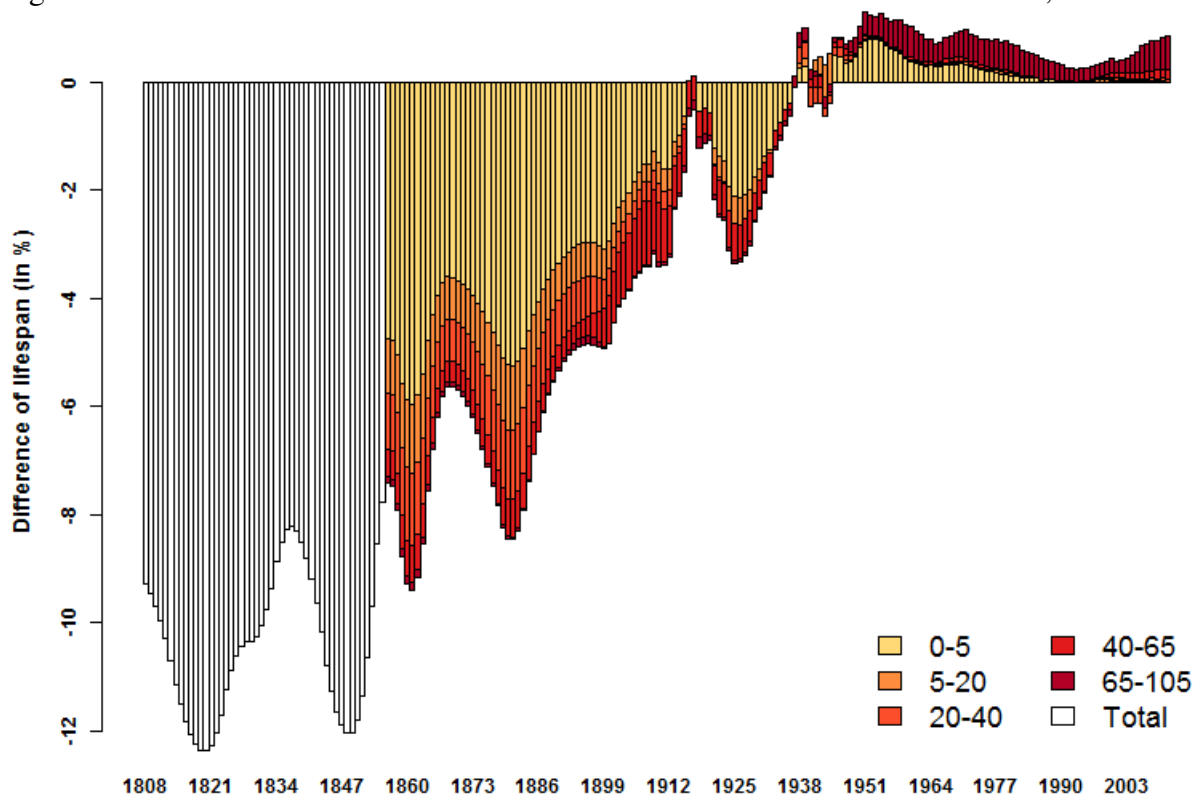
Notes: The green and red classes contain *départements* with the highest and lowest life expectancy respectively. Clustering computations based on 5-year smoothed life expectancy, and without war values (1939–1945). Sample includes 90 *départements*.

Figure 10: INEQUALITY CLUSTERING, 1981–2014



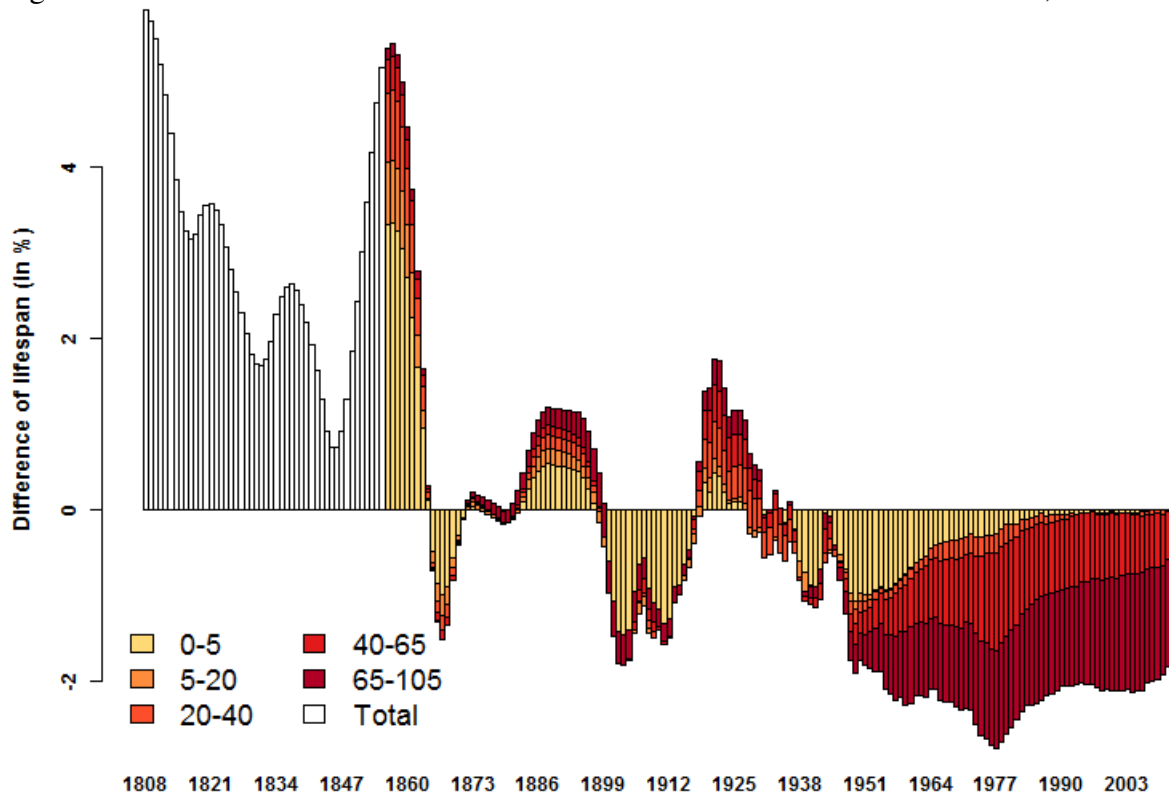
Notes: The green and red classes contain *départements* with the highest and lowest life expectancy respectively. Clustering computations based on 5-year smoothed life expectancy. Sample includes 90 *départements*.

Figure 11: DIFFERENCES IN LIFE EXPECTANCY BETWEEN SEINE AND FRANCE, 1806–2014



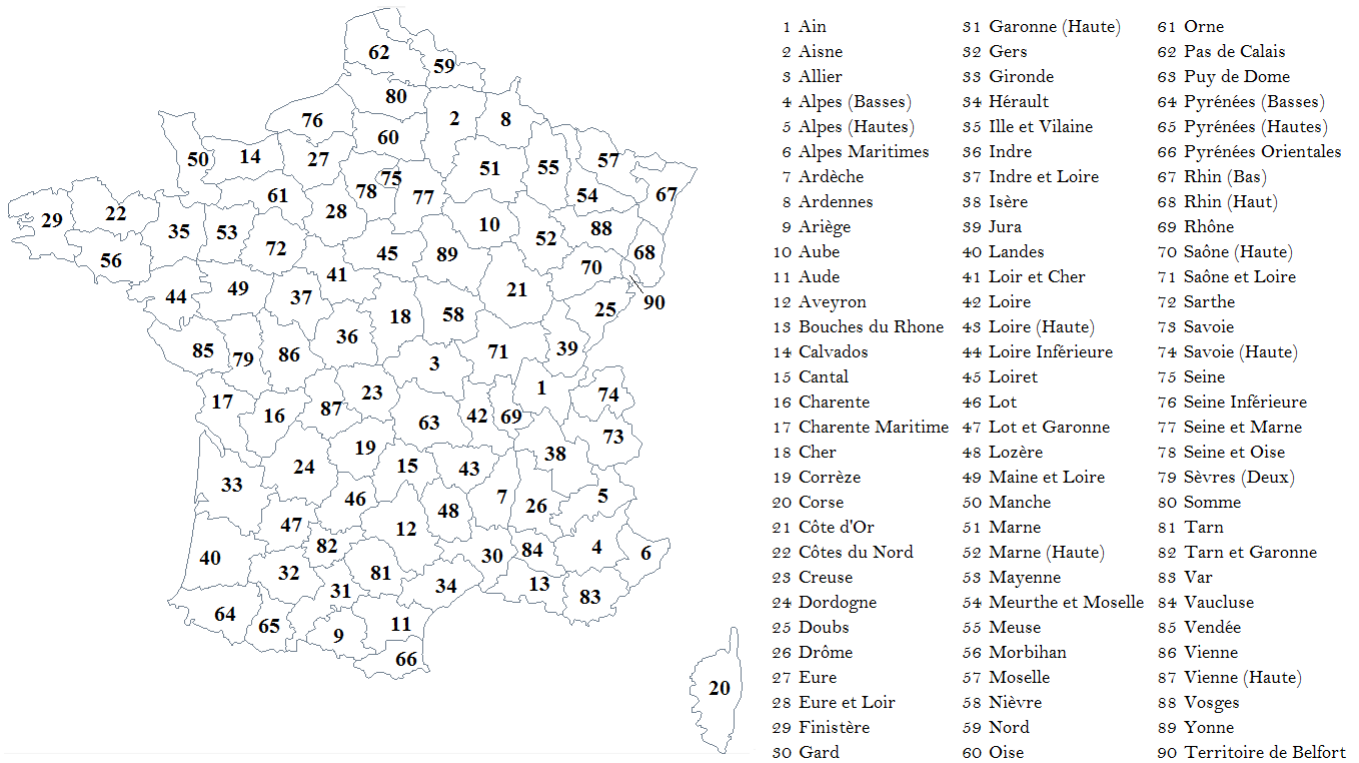
Notes: Difference of life expectancy between *Seine* and France split according to the weight of each group. The split begins in 1851 since there are no reliable lifetables before this date.

Figure 12: DIFFERENCES IN LIFE EXPECTANCY BETWEEN NORD AND FRANCE, 1806–2014



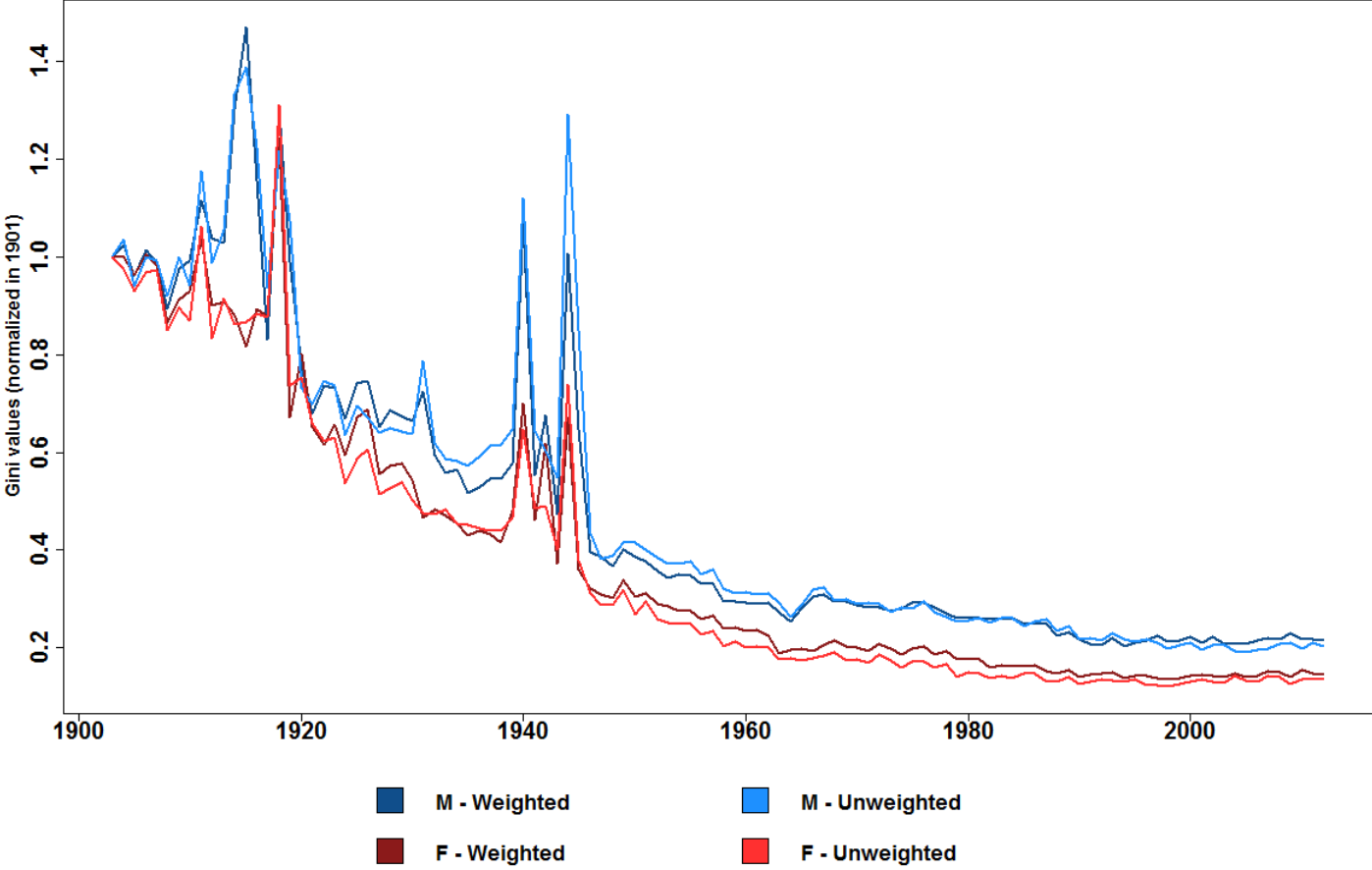
Notes: Difference of life expectancy between *Nord* and France split according to the weight of each group. The split begins in 1851 since there are no reliable lifetables before this date.

Figure 13: MAP OF THE 90 FRENCH DÉPARTEMENTS IN 1967



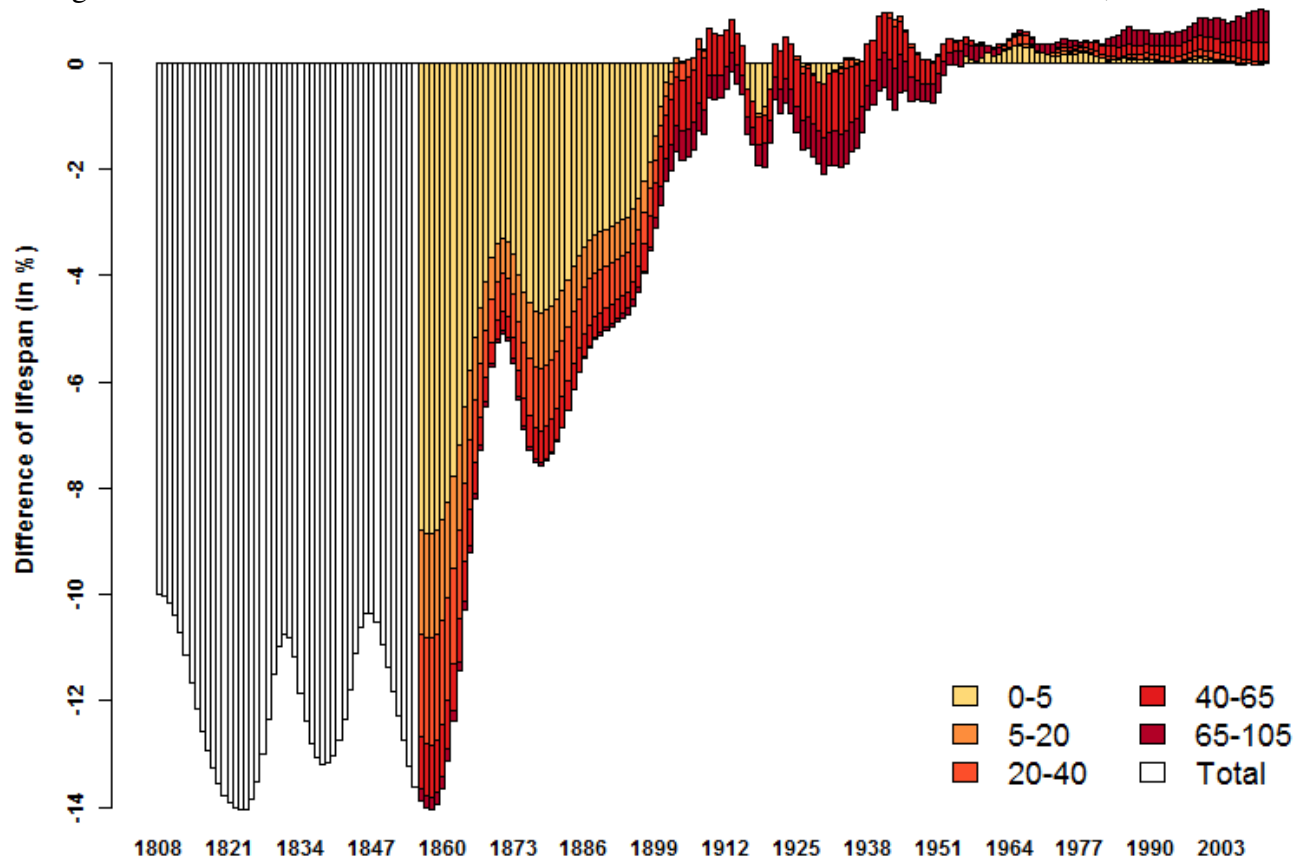
Notes: Corse is a single *département* in this classification.

Figure 14: GINI INDICATORS FOR MEN/WOMEN - WEIGHTED/UNWEIGHTED SPECIFICATIONS, 1901–2014



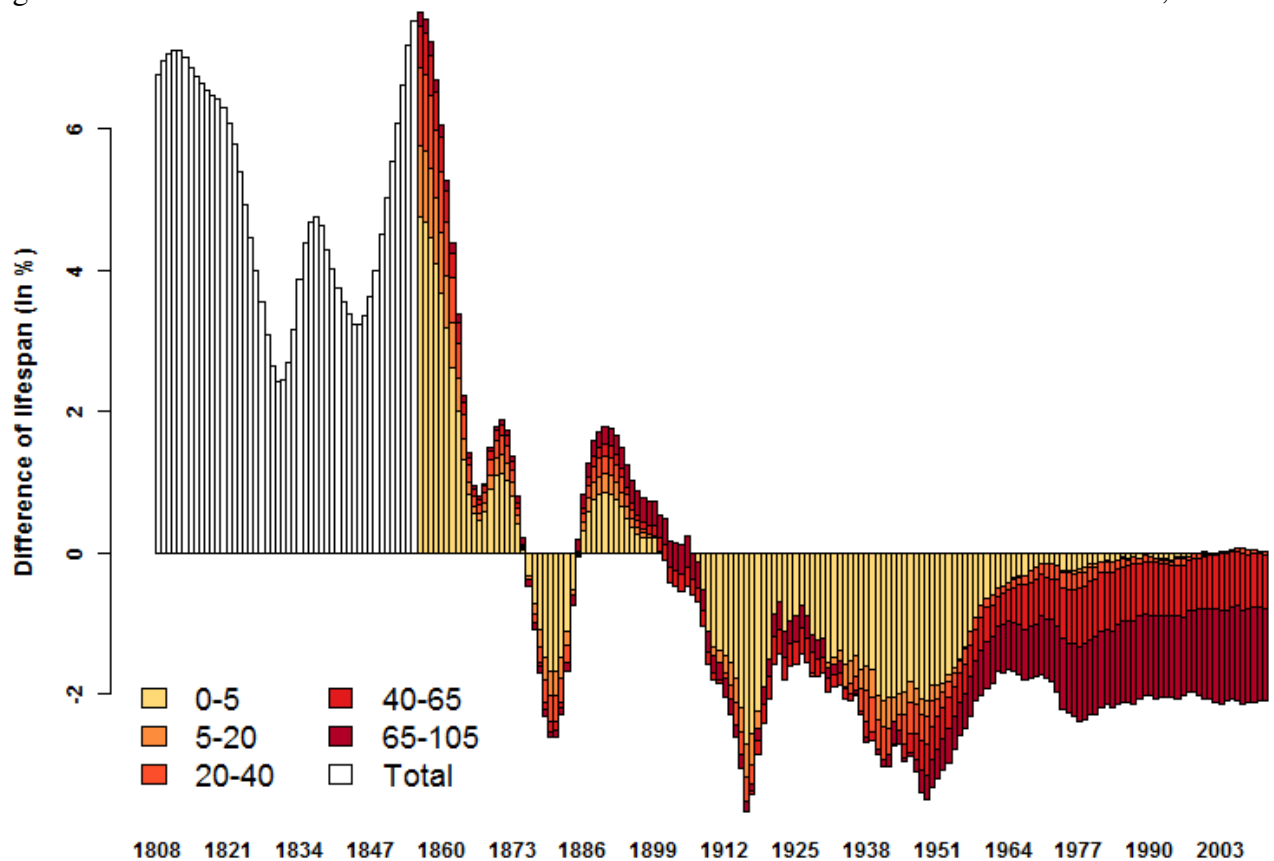
Notes: “M - Weighted” means Gini Indicator of spatial inequalities for men, *départements* weighted by population. “F - Weighted” is the same specification for women. Sample includes 90 *départements*.

Figure 15: DIFFERENCES IN LIFE EXPECTANCY BETWEEN RHÔNE AND FRANCE, 1806–2014



Notes: Difference of life expectancy between *Rhône* and France split according to the weight of each group. The split begins in 1851 since there is no reliable lifetables before this date.

Figure 16: DIFFERENCES IN LIFE EXPECTANCY BETWEEN PAS-DE-CALAIS AND FRANCE, 1806–2014



Notes: Difference of life expectancy between *Pas-de-Calais* and France split according to the weight of each group. The split begins in 1851 since there is no reliable lifetables before this date.