

2018

Spatial variability in the diversity and structure of faunal assemblages associated with kelp holdfasts (*Laminaria hyperborea*) in the northeast Atlantic

Harry Teagle

Pippa J. Moore
Edith Cowan University

Helen Jenkins

Dan A. Smale

Follow this and additional works at: <https://ro.ecu.edu.au/ecuworkspost2013>



Part of the [Marine Biology Commons](#)

[10.1371/journal.pone.0200411](https://doi.org/10.1371/journal.pone.0200411)

Teagle, H., Moore, P. J., Jenkins, H., & Smale, D. A. (2018). Spatial variability in the diversity and structure of faunal assemblages associated with kelp holdfasts (*Laminaria hyperborea*) in the northeast Atlantic. *PLoS one*, *13*(7), e0200411. Available [here](#)

This Journal Article is posted at Research Online.
<https://ro.ecu.edu.au/ecuworkspost2013/4648>

RESEARCH ARTICLE

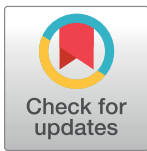
Spatial variability in the diversity and structure of faunal assemblages associated with kelp holdfasts (*Laminaria hyperborea*) in the northeast Atlantic

Harry Teagle^{1,2}, Pippa J. Moore^{3,4}, Helen Jenkins^{1‡}, Dan A. Smale^{1*}

1 Marine Biological Association of the United Kingdom, The Laboratory, Citadel Hill, Plymouth, United Kingdom, **2** Ocean and Earth Science, National Oceanography Centre Southampton, University of Southampton, Southampton, United Kingdom, **3** Institute of Biological, Environmental and Rural Sciences, Aberystwyth University, Aberystwyth, United Kingdom, **4** Centre for Marine Ecosystems Research, School of Natural Sciences, Edith Cowan University, Joondalup, Western Australia, Australia

‡ Current address: Department of Life Sciences, The Natural History Museum, London, United Kingdom

* dansma@MBA.ac.uk



OPEN ACCESS

Citation: Teagle H, Moore PJ, Jenkins H, Smale DA (2018) Spatial variability in the diversity and structure of faunal assemblages associated with kelp holdfasts (*Laminaria hyperborea*) in the northeast Atlantic. PLoS ONE 13(7): e0200411. <https://doi.org/10.1371/journal.pone.0200411>

Editor: Maura (Gee) Geraldine Chapman, University of Sydney, AUSTRALIA

Received: January 11, 2018

Accepted: June 26, 2018

Published: July 12, 2018

Copyright: © 2018 Teagle et al. This is an open access article distributed under the terms of the [Creative Commons Attribution License](https://creativecommons.org/licenses/by/4.0/), which permits unrestricted use, distribution, and reproduction in any medium, provided the original author and source are credited.

Data Availability Statement: All relevant data are within the paper and its Supporting Information files.

Funding: H.T. is funded through the National Environmental Research Council (NERC) Doctoral Training Partnership SPITFIRE (NE/L002531/1), administered through Southampton University. D. A.S. was supported by an Independent Research Fellowship awarded by the Natural Environment Research Council of the UK (NE/K008439/1), PM was supported through a Marie Curie Career

Abstract

Kelp species are ecologically-important habitat-formers in coastal marine ecosystems, where they alter environmental conditions and promote local biodiversity by providing complex biogenic habitat for an array of associated organisms. While it is widely accepted that kelps harbour significant biodiversity, our current understanding of spatiotemporal variability in kelp-associated assemblages and the key environmental drivers of variability patterns remains limited. Here we examined the influence of ocean temperature and wave exposure on the structure of faunal assemblages associated with the holdfasts of *Laminaria hyperborea*, the dominant habitat-forming kelp in the northeast Atlantic. We sampled holdfasts from 12 kelp-dominated open-coast sites nested within four regions across the UK, spanning ~9° in latitude and ~2.7° C in mean sea surface temperature. Overall, holdfast assemblages were highly diverse, with 261 taxa representing 11 phyla recorded across the study. We examined patterns of spatial variability for sessile and mobile taxa separately, and documented high variability between regions, between sites within regions, and between replicate holdfasts for both assemblage types. Mobile assemblage structure was more strongly linked to temperature variability than sessile assemblage structure, which was principally structured by site-level variability in factors such as wave exposure. Patterns in the structure of both biogenic habitat and associated assemblages did not vary predictably along a latitudinal gradient in temperature, indicating that other processes acting across multiple spatial and temporal scales are important drivers of assemblage structure. Overall, kelp holdfasts in the UK supported high levels of diversity, that were similar to other kelp-dominated systems globally and comparable to those recorded for other vegetated marine habitats (i.e. seagrass beds), which are perhaps more widely recognised for their high biodiversity value.

Integration Grant (PCIG10-GA-2011-303685). Some of the fieldwork was supported by the NERC National Facility for Scientific Diving (NFSD/14/01). The funders had no role in study design, data collection and analysis, decision to publish, or preparation of the manuscript.

Competing interests: The authors have declared that no competing interests exist.

Introduction

In the marine environment, the distribution of species and the structure of communities are regulated by a range of biotic and abiotic factors that operate over multiple spatial and temporal scales [1–6]. Understanding the relative influence of key processes in structuring populations and communities is a central goal of ecology, and is of elevated importance given that abiotic and biotic factors are being altered by human activities [7–12]. By examining patterns of variability in ecological structure over multiple spatial and temporal scales, insights can be gained into the relative importance of processes that vary across similar scales. For example, repeated regional-scale observations conducted across latitudinal gradients in ocean temperature can elucidate the influence of temperature on the ecophysiological performance of populations and species [13, 14], the biogeographical distributions of species [15–17] and, in turn, the structure of communities [14, 18–20]. Similarly, examining biodiversity patterns across smaller spatial scales that encapsulate natural gradients in other factors (e.g. wave exposure, grazing pressure, turbidity) can provide insights into their relative importance in structuring communities [21–27]. Establishing baselines of biodiversity patterns at multiple scales within key ecosystems is vital, given the rate at which species' distributions and abundances are changing in the current period of anthropogenic environmental change [28, 29].

Foundation species exert strong influence over other organisms by altering environmental conditions and, in many cases, creating or modifying habitat for other species [30, 31]. Kelps, large brown seaweeds of the order Laminariales, are the dominant foundation species along temperate and subpolar rocky coastlines in both hemispheres [9]. Kelps are amongst the fastest growing autotrophs on Earth [32–34] and, as such, represent a major source of primary production and an important food source in coastal environments [35, 36]. Kelps also promote secondary productivity through the provision of three-dimensional habitat structure, which supports a myriad of associated organisms including species of commercial and ecological importance [8, 9, 37]. They support increased levels of biodiversity by offering greater habitat space, heterogeneity and complexity, as well as through direct and indirect (via epibionts) provision of food [38]. A recent review of the role of kelps as biogenic habitat formers found that individual plants often support highly abundant invertebrate assemblages, often numbering in the high tens of thousands per kelp plant (see [38] and references therein). As habitat formers, mature kelp thalli provide three distinct micro-habitats; the blade (lamina), the stipe, and the holdfast, all of which differ considerably in form and structure, and consequently support assemblages of differing composition, diversity and abundance [38]. Of these micro-habitats, the holdfast generally supports the most diverse and temporally persistent assemblage, and has received greatest attention in the literature (see [38] and references therein).

The interstitial space between the underlying hard substratum and the haptera (the root-like structures which form the holdfast) of kelp holdfasts represents favourable habitat for colonising fauna, primarily because (i) the surface area and volume of habitat available for colonisation is increased; (ii) the structure offers protection from adverse environmental conditions and predators, and (iii) food availability is enhanced through accumulation of organic matter [39–42]. In general, the living space within kelp holdfasts offers a range of niches that may differ from adjacent habitats. Assemblages associated with kelp holdfasts are often diverse and abundant, with up to 90 macrofaunal species [2, 43, 44] and 10,000 individuals inhabiting a single holdfast [2, 45]. Variability in the structure of holdfast-associated assemblages is driven by a range of biotic and abiotic factors, including the size and complexity of the holdfast itself [2, 46–48], hydrodynamic forces [49, 50], sedimentation rates and sediment content [45, 51], food and larval supply [25, 52], pollution [53–55], turbidity [25, 56] and depth [51, 57]. In addition, kelps are cool-water species and the structure of kelp populations is known to vary

along large-scale gradients in ocean temperature [13, 58]. Marginal equatorward populations, in particular, are stressed by increases in temperature [59, 60] and, as such, observed and predicted ocean warming trends will likely impact upon kelp populations and affect their functioning as habitat-forming foundation species. It seems likely, therefore, that ocean climate will be a key driver of holdfast assemblage structure, because (i) biogenic habitat structure is likely to vary with temperature as kelp populations respond to climatic conditions, (ii) the biogeographic distributions of marine species are strongly constrained by temperature [17] and (iii) the structure of populations of kelp-associated fauna (i.e. abundances) is likely to vary with ocean climate [61]. However, as very few studies have examined variability in holdfast assemblages across spatial scales large enough to encompass natural temperature gradients, the influence of ocean climate on biodiversity patterns remains unclear.

In the northeast Atlantic, wave-exposed subtidal rocky reefs are generally dominated by the kelp *Laminaria hyperborea* (Gunnerus) Foslie 1884; a large, stipitate kelp which attaches to rocky substratum by a well formed, typically 'laminarian' holdfast [38], from the extreme low intertidal to depths of up to 40 m in clear oceanic waters [62]. *L. hyperborea* is a boreal species, distributed from northern Portugal to its poleward range edge in northern Norway, Iceland and the Russian Murmansk coast. *L. hyperborea* is the foremost canopy former on shallow, wave exposed rocky reefs throughout this region [63, 64], and represents an important habitat for coastal biodiversity and other ecosystem services [8]. In the UK, *L. hyperborea* is spatially extensive, forms dense canopies and offers a high quantity and quality of biogenic habitat (Fig 1). In general, however, kelp ecosystems in the UK have been relatively understudied since the pioneering work of the 1960s and 70s (e.g. [34, 44, 65]), particularly when compared to the volume of work conducted in other research-intensive nations (e.g. Australia and the USA; [8]). Perhaps surprisingly, fundamental information on biodiversity patterns associated with *L. hyperborea*, and the potential multi-scale drivers of variability in holdfast assemblage structure, are still lacking.

Here, we examined the structure of holdfast assemblages at 12 sites within 4 regions of the UK to better understand spatial variability in kelp-associated biodiversity. The specific aims of the study were to (1) benchmark the diversity, abundance, biomass, and structure of holdfast assemblages across the latitudinal distribution of *L. hyperborea* in the UK; (2) examine multi-scale spatial variability patterns in holdfast assemblage structure; and (3) explicitly link variability in ecological pattern with potential environmental drivers. Recent work on the kelp canopies themselves has documented high between-site variability in population and habitat structure, as well as regional differences between northerly and southerly locations [19, 58]. Given that holdfast assemblages are likely to be strongly influenced by the population structure of host kelp species [38, 46, 66], we predicted that they would also exhibit high levels of small-scale variability (i.e. between plants and sites), as well as some structuring across larger spatial scales (i.e. between regions).

Methods

Study area

Laminaria hyperborea holdfasts were sampled by scuba divers from 12 sites nested within four regions in the UK (Fig 2); north Scotland (region 'A'), west Scotland (B), southwest Wales (C) and southwest England (D). All sites were located on the exposed west coast of the UK, where kelp forest habitat is abundant, and span 9° of latitude (~50° to ~59° N), and encompass a temperature gradient of ~2.7°C (Table 1). All study sites within these regions were 'open coast', moderately to fully exposed to wave action and were characterised by extensive subtidal rocky reef at depths of 0 to >5 m (below chart datum). All sites were also deemed to be representative

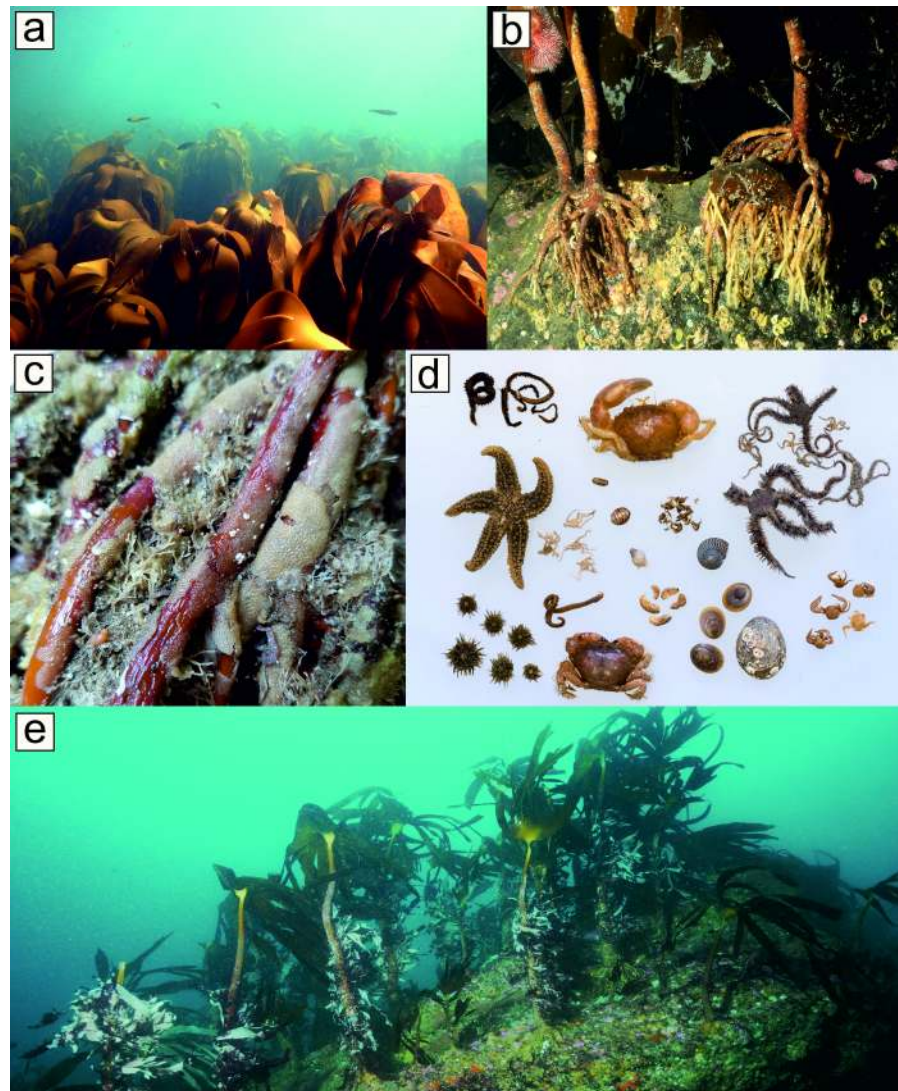


Fig 1. (a) *Laminaria hyperborea* is a dominant kelp species in the northeast Atlantic, where it forms dense, extensive macroalgal canopies. (b) It forms a large, complex holdfast structure, which anchors the plant to rocky substrata and provides biogenic habitat for associated organisms. (c) Holdfasts sampled were typically encrusted by a high coverage of sessile invertebrates. (d) The interstitial space between the reef surface and the holdfast was utilised by a high diversity of mobile invertebrates. (e) Dense stands of *L. hyperborea* may serve as ecologically-significant repositories of biodiversity.

<https://doi.org/10.1371/journal.pone.0200411.g001>

of the wider region, in terms of coastal geomorphology, and were not influenced by local anthropogenic activities.

Environmental variables

Environmental sensors were deployed on a small sub-surface buoy, suspended in the water column immediately above the reef surface by a 0.65 m rope, which was attached to a clump weight and allowed free movement of the sensor in response to water motion. Sensors were deployed within a 4-week period in July and August 2014 and retrieved ~6 weeks later. Each sensor array was deployed for >45 days at each site, and any surrounding kelp plants (~2 m radius) were removed to negate any shading and/or impediment of water movement around

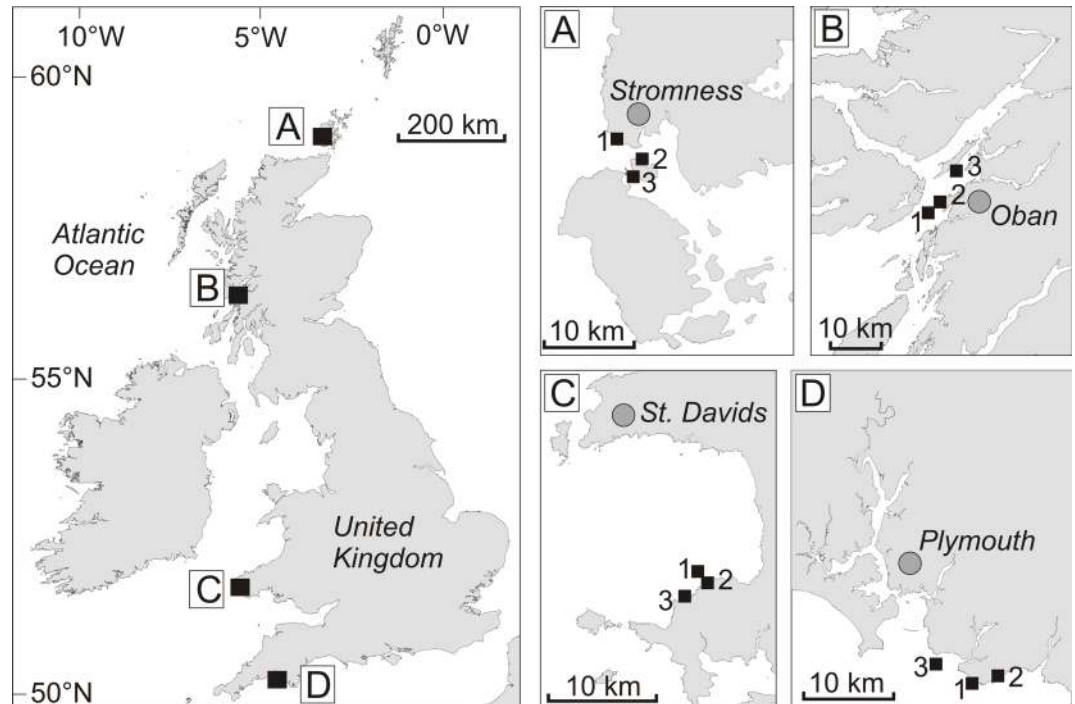


Fig 2. Map indicating the locations of the four study regions in the UK, northeast Atlantic: (A) northern Scotland, (B) western Scotland, (C) southwest Wales and (D) southwest England. Smaller panels show the positions of the 3 study sites within each region.

<https://doi.org/10.1371/journal.pone.0200411.g002>

the buoy. These arrays recorded temperature, light levels, and relative water motion at fine temporal resolutions. In order to quantify water motion driven by wave exposure and/or tidal regimes, an accelerometer (HOBO Pendant G Logger, Onset, attached to the buoy) recorded its position in three axes every 5 minutes (see [67]). A temperature and light level sensor was also attached to the buoy and captured data every 15 minutes (see [58] for further details). Relative water motion was calculated from the accelerometer data by extracting movement data in the planes of the x- and y-axes, after first subtracting the modal average of the entire dataset from each value to account for any latent static ‘acceleration’ resulting from the accelerometer not sitting exactly perpendicular to the seabed (caused by imprecise attachment of the logger to the buoy or the buoy to the tether).

Accelerometer data were converted to water motion following Evans and Abdo [68], and then used to generate two separate metrics, one for water movement induced by tidal flow, and one by wave action. For tidal flow, all values above the 90th percentile (i.e. those most likely related to turbulent, wave driven water movement) were removed. The range of water motion values recorded within each 12 h period (representing ~1 complete tidal cycle) was then calculated and averaged over the 45 d deployment. Following subtraction of average water motion induced by tidal flow, wave-induced water movement was calculated by taking an average of the 3 highest magnitude values recorded for each site. Recorded temperature data was converted to daily mean temperatures; a 24 h period during peak summer temperatures, where all sensor array deployments overlapped was then used to generate maximum daily means and average daily temperature for each study site. To establish average summer daytime (08:00–20:00 h) light levels for each site, data for the first 14 d of deployment were used, in order to limit the potential of fouling by biofilms and epiphytes to affect light measurements.

Table 1. Predictor variables recorded at 12 study sites within 4 distinct regions in the UK. ‘Mean SST’ is the annual mean temperature calculated from satellite-derived sea surface temperature (SST) data (2005–2014). ‘Log wave fetch’ is a broad-scale metric of wave exposure, derived by summing fetch values calculated for 32 angular sectors surrounding each site (see [71]). ‘Log chl *a* mean’ is the average annual concentration of chlorophyll *a* (log10 mg m⁻³ from MODIS Aqua satellite data, 2002–2012). ‘Peak summer max (mean) temp’ is the maximum (average) daily temperature recorded between 26 July and 18 August 2014, when all sensor array deployments overlapped. ‘Summer daylight’ is the average daytime (08:00–20:00) light intensity during a 14 d deployment of light loggers. ‘Tidal water motion’ is a proxy for water movement driven by tidal flow, derived from the range in water motion values recorded during a 24 h period, averaged over the 45 d accelerometer deployment. ‘Wave water motion’ is a proxy for water movement driven by waves, derived from averaging the 3 highest-magnitude water motion values observed during the 45 d accelerometer deployment (following correction for tidal-movement). ‘PO₄³⁻’ and ‘NO₃⁻+NO₂⁻’ indicate averaged spring and summer concentrations of phosphate and nitrite + nitrate respectively (n = 4 water samples taken from ~1 m above the kelp canopy).

Region	Site	Locality	Mean SST (°C)	Log wave fetch (km)	Log chl <i>a</i> mean (mg m ⁻³)	Peak summer temp (°C)		Summer daylight (lumens m ⁻²)	Tidal water motion (m s ⁻¹)	Wave water motion (m s ⁻¹)	NO ₃ ⁻ +NO ₂ ⁻ (µM)	PO ₄ ³⁻ (µM)
						Max	Mean					
N Scot (A)	A1	Warbeth	9.7	3.8	0.21	13.99	13.69	7124	0.18	1.02	1.66	0.17
	A2	N Graemsay	9.8	3.5	0.26	13.68	13.49	4835	0.20	0.30	1.92	0.23
	A3	S Graemsay	9.7	3.4	0.26	13.87	13.65	5144	0.26	0.16	2.58	0.19
W Scot (B)	B1	Dubh Sgeir	10.8	3.3	0.59	13.96	13.69	4794	0.15	0.22	2.93	0.30
	B2	W Kerrera	10.7	3.1	0.65	13.93	13.68	3094	0.05	0.08	2.52	0.26
	B3	Pladda Is.	10.8	2.8	0.73	14.52	14.06	4874	0.19	0.11	1.96	0.27
Wales (C)	C1	Stack Rock	11.7	3.7	0.43	17.06	16.54	1861	0.13	0.73	3.17	0.16
	C2	Mill Haven	11.8	3.5	0.43	17.15	16.62	3657	0.08	0.34	2.68	0.22
	C3	St. Brides	11.8	3.4	0.43	17.13	16.63	2960	0.08	0.23	3.09	0.14
SW Eng (D)	D1	Hillsea Pt.	12.4	4.1	0.28	17.62	16.80	2746	0.15	0.42	3.41	0.17
	D2	E Stoke Pt.	12.4	3.9	0.28	18.31	17.09	2840	0.11	0.22	2.41	0.11
	D3	N Mewstone	12.5	3.5	0.38	17.71	17.06	4432	0.06	0.20	3.05	0.35

<https://doi.org/10.1371/journal.pone.0200411.t001>

In addition, nutrient levels at each site were assessed by collecting 2 independent seawater samples from immediately above the kelp canopy with duplicate 50 ml syringes. Samples were passed through a 0.2 µm syringe filter and kept on ice without light, before being frozen and analysed (within 2 months) for nutrients (nitrate+nitrite; NO₃⁻+NO₂⁻, and phosphate; PO₄³⁻) using standard analytical techniques (see [69] and references therein). Nutrient concentrations were quantified twice at each site (in summer 2014 and spring 2015) and mean values are presented here. In addition to these fine-scale variables, average sea temperatures (2005–2014) were calculated from satellite-derived SSTs (9 km resolution AVHRR data), wave fetch was calculated for each site following Burrows et al. [70] and Burrows [71], and estimates of chlorophyll *a* (chl *a*) concentrations were generated from optical properties of seawater derived from satellite images (collected by the MODIS Aqua satellite at 9 km resolution, averaged for the period 2002 to 2012).

Sample collection and processing

Six holdfast samples were collected in late summer (i.e. August/September 2014) from each site (72 samples in total). Mature, canopy forming *L. hyperborea* plants (see Fig 1) were haphazardly selected from within dense kelp stands at depths of 2–4 m (below chart datum). Divers cut the stipe of each plant just above the holdfast, which was immediately covered with a fine-mesh cotton bag to prevent the loss of mobile fauna, and then gently prised the holdfast from the reef before sealing the bag with a cable tie. Kelp plants were situated >2 m apart and samples were all individual, rather than fused, holdfasts. Samples were immediately treated

with a 1% propylene phenoxylol solution for ~30 minutes, in order to relax soft invertebrate specimens to aid in later identification, and stored in 70% industrial methylated spirit (IMS) solution until processing. To process, holdfasts were rinsed with freshwater, and any mobile fauna was collected in a 1 mm sieve and returned to 70% IMS solution for subsequent identification. The total holdfast volume was then quantified by displacement; the entire holdfast structure was wrapped in plastic kitchen wrap and submerged in freshwater. Haptera (the root-like structures which make up the holdfast) were then removed to reveal the internal holdfast structure and any sessile fauna within, which were identified immediately. The volume of the cleaned haptera were then measured (using displacement), subsequently being subtracted from total holdfast volume to give the volume of the potential habitable space within the holdfast, and wet weight was recorded. All fauna was identified to the lowest taxonomic level possible, in most cases species (~67% of taxa). Sessile fauna was weighed (tissue-dried fresh weight) to establish biomass, whereas mobile fauna were enumerated for abundance. Finally, each kelp sampled was aged by sectioning the stipe immediately above the holdfast and counting seasonal growth rings, as described by Kain [65]. All sampling was conducted according to UK legislation and under the guidance of Natural England, Scottish Natural Heritage and the Inshore Fisheries and Conservation Authorities. No specific permits were required to collect samples as all study sites fall outside protected or legislated areas, and no protected species were collected.

Statistical analysis

All analysis was conducted using univariate and multivariate permutational analyses using the PERMANOVA add on [72] for Primer v7 software [73]. Metric multidimensional scaling (mMDS) ordinations were constructed to visualise multivariate patterns. Variability in assemblage structure was examined with multivariate PERMANOVA using a 2-factor design, with region (4 levels) as a fixed factor and site (3 levels) as a random nested factor. To examine correlations with habitat size, habitable holdfast space was included as a co-variate in all analyses. Permutations (4999 under a reduced model) were based on a Bray-Curtis similarity matrix constructed from fourth root transformed biomass data (for sessile assemblages) and fourth root transformed abundance data (for mobile assemblages). Fourth root transformation was chosen to down weight the influence of large sponges and colonial ascidians and high abundances of amphipods, respectively. Pair-wise tests between regions were conducted wherever the main effect was significant ($P < 0.05$). Differences in multivariate dispersion between assemblages were examined using the PERMDISP routine. Where significant differences in assemblage structure between regions were detected, SIMPER analysis was performed to determine which taxa contributed most to the observed dissimilarity. Assemblages were first standardised by habitable holdfast space to account for variability related to habitat size. Univariate assemblage metrics (i.e. total biomass and species richness) were examined using the same model, but with permutations based on resemblance matrices generated from Euclidean distances between untransformed data. The biogenic structure of holdfasts (i.e. total volume, living space, age) was examined using the same univariate model but without the co-variate. PERMDISP was again used to examine differences in within-group (univariate) dispersion between levels of the factor of interest.

Relationships between environmental variables and assemblage structure were examined using the DISTLM (distance-based linear models) routine in PERMANOVA. Predictor variables included the environmental data shown in [Table 1](#), as well as the habitat characteristics of holdfast age and habitable space. Prior to analysis, draftsman's plots were generated from normalised data, and Pearson's correlation coefficient was used to check for colinearity

between variables. All temperature measures were highly correlated ($r > 0.9$), so only mean summer temperature was retained in the analysis. Mean nitrate+nitrite ($\text{NO}_3^- + \text{NO}_2^-$) and chl *a* concentration were also highly correlated with other variables and were excluded from the analysis. The DISTLM routine was then used to obtain the most parsimonious model using a stepwise selection procedure and AICc selection criterion [72, 74].

To examine the biogeographic affinities of individual species comprising holdfast assemblages, all fauna identified to species level (174 species) were classified based on the southernmost limit (i.e. warm-water equatorward range edge) of their recorded distributions. Species were categorised in bins of 10° latitude (which ranged from the 'warmest' bin of 20° - 30° N to the 'coolest' bin of 50° - 60° N) based on data from the Ocean Biogeographic Information System (OBIS), the Global Biodiversity Information Facility (GBIF), and the World Register of Marine Species (WoRMS). We hypothesised that our northernmost study regions would support a greater proportion of species with higher latitude equatorward range edges (i.e. Arctic or Boreal species) whereas southernmost regions would support more species with lower latitude equatorward range edges (i.e. Lusitanian species).

Finally, we explicitly compared spatial variability patterns between sessile and mobile assemblages. We used the RELATE procedure in Primer v7 to measure correlations between similarity matrices generated from sessile and mobile assemblages at different spatial scales (i.e. the full datasets at the holdfast level, as well as datasets averaged to the site level and to the region level). The technique uses Spearman Rank correlation to determine the relatedness of two similarity matrices, with a ρ value of 1 indicating that dissimilarity patterns are entirely correlated. We also examined correlations in taxon richness and total biomass/abundance between sessile and mobile assemblages using scatterplots and Pearson's correlation tests.

Results

Environmental variables

Seawater temperature differed across study regions, with a clear distinction between northern (A, B) and southern regions (C, D; [Table 1](#)). Mean sea temperatures in southern regions were $\sim 2.7^\circ\text{C}$ higher than in northern regions. Wave fetch was generally comparable between sites and regions, although the greatest values were recorded for sites in northern Scotland and southwest England ([Table 1](#)). Water motion associated with tidal flow was most pronounced in northern Scotland (sites A2 and A3). Light intensity was variable, both within and among regions ([Table 1](#)), with maximum light intensity (site A1) ~ 3 times greater than minimum light intensity (site C1). Nitrate and nitrite ($\text{NO}_3^- + \text{NO}_2^-$) and phosphate (PO_4^{3-}) concentrations were broadly comparable across sites and regions, although nitrate and nitrite values were slightly higher in Wales and southwest England and phosphate values were higher in west Scotland ([Table 1](#)).

Biogenic habitat structure

The average age of kelp plants varied to some degree ([Fig 3A](#)), with a maximum mean age of 8.83 ± 0.48 SE recorded in north Scotland (site A1) and a minimum mean age of 5 ± 0.37 SE in west Scotland (site B3). Overall, the age of individual kelp plants ranged from 4 years (sites C2, B2 and B3) to 12 years (site B2). Statistically, significant differences between sites were detected, but there was no overall effect of region ([Table 2](#)). Regional-scale variability was more pronounced for both total volume and habitable space (i.e. the living space contained within the holdfast), which tended to be highest in north Scotland and lowest in southwest Wales ([Fig 3B and 3C](#)). Significant variability was recorded both between regions and between

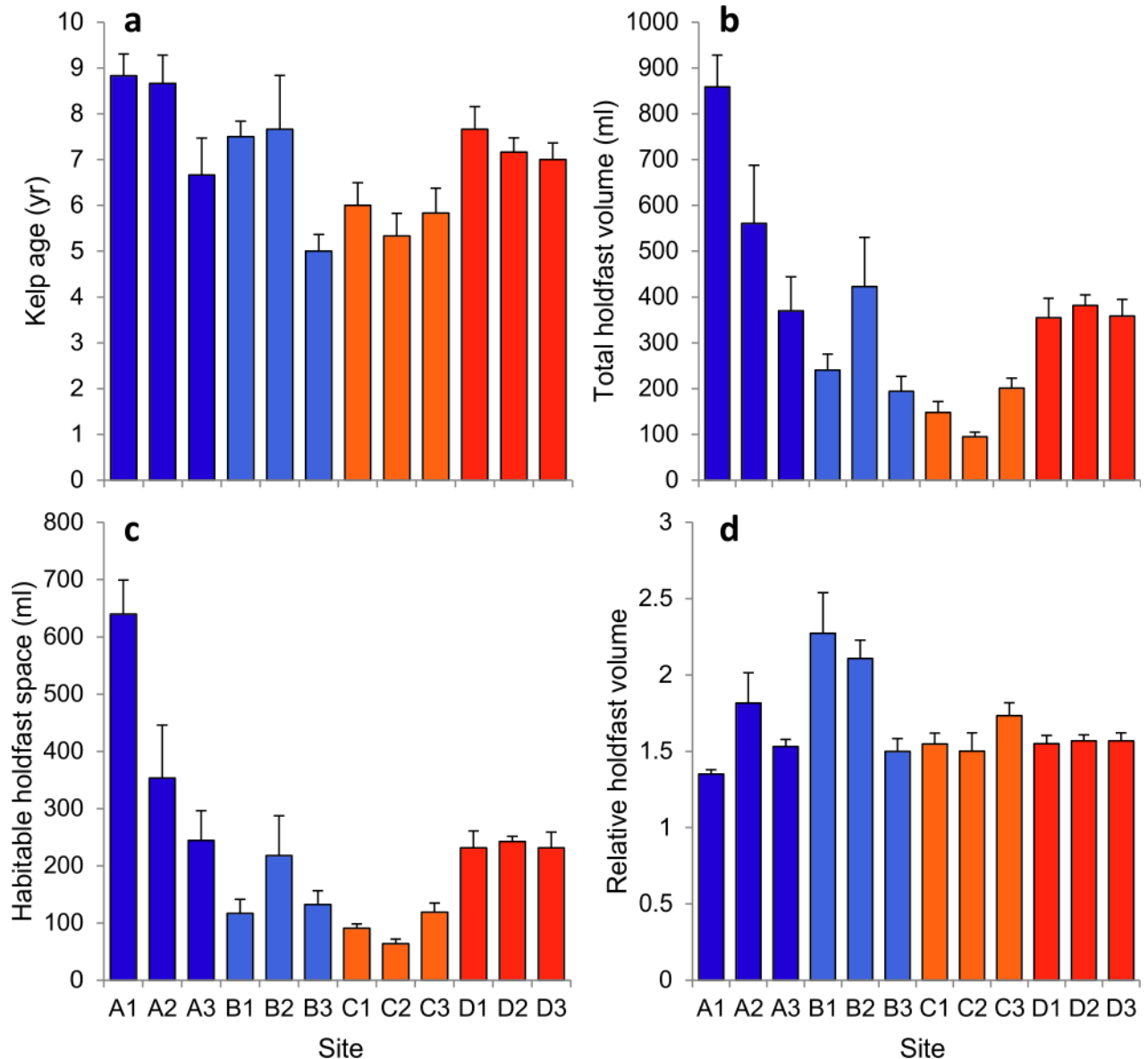


Fig 3. Biogenic habitat structure provided by *Laminaria hyperborea* holdfasts: (a) kelp age, (b) total holdfast volume (THV), (c) habitable holdfast space (HHS) and (d) relative holdfast space (THV/HHS). Values are means of 6 replicate holdfasts per site (\pm SE).

<https://doi.org/10.1371/journal.pone.0200411.g003>

sites (Table 2). Pairwise tests within the significant region factor showed that holdfast size (in terms of both total holdfast volume and habitable space) differed significantly between all regions, with the exception total holdfast volume at west Scotland and southwest England, where no difference was observed. In general, holdfasts from north Scotland (sites A1 and A2) were the largest observed, with those from southwest Wales being consistently the smallest (Fig 3B and 3C). The ratio of total volume to habitable space provided an estimate of internal complexity, with a higher ratio indicating relatively greater interstitial spacing. This metric was more consistent across regions, but did exhibit marked between-site variability in north and west Scotland (Fig 3D). Statistically, variability between sites was significant but no effect of region was detected (Table 2).

Table 2. Results of univariate PERMANOVA to test for differences in habitat metrics (a. kelp age, b. total holdfast volume, c. habitable holdfast space and d. relative holdfast space). Permutations were based on a Euclidean distance similarity matrix generated from untransformed data. All tests used a maximum of 4999 permutations under a reduced model; significant effects ($P < 0.05$) are shown in bold. An underlined P-value indicates that PERMDISP detected significant differences in within-group dispersion between levels of that factor ($P < 0.05$).

Source	df	MS	F	P	df	MS	F	P
a. Kelp age				b. Total holdfast volume				
Region	3	17.333	2.943	<u>0.123</u>	3	6.36E+05	5.404	0.007
Site(Region)	8	5.8889	2.928	0.007	8	1.18E+05	5.216	0.001
Residual	60	2.0111			60	22551		
Total	71				71			
c. Habitable holdfast space				d. Relative holdfast space				
Region	3	3.48E+05	5.105	0.002	3	0.6768	1.901	<u>0.212</u>
Site(Region)	8	68098	5.864	0.001	8	0.3544	4.412	0.001
Residual	60	11612			60	0.0803		
Total	71				71			

<https://doi.org/10.1371/journal.pone.0200411.t002>

Overall biodiversity patterns

Across the study (72 holdfasts), 261 taxa representing 11 phyla were recorded, with just over 70% classed as mobile fauna (S1 Table). In total 146 taxa were recorded from north Scotland (Region A), 134 taxa from western Scotland (B), 142 taxa from southwest Wales (C) and 136 from southwest England (D). Overall, taxa exhibited limited regional-scale specificity, with 33.7% of taxa being recorded in more than one region and 20.7% recorded in all four study regions. Over 8,000 individual mobile organisms were identified and counted, and the sessile fauna identified weighed ~500g.

Sessile assemblages

In total, 74 taxa were recorded from the 72 holdfasts (S1 Table). Typically, the haptera structures forming the holdfast were colonised by a high coverage of sessile organisms (Fig 1). Taxon richness varied from nine species per holdfast (samples from sites B3 and A1) to 25 species per holdfast (samples from site D3). The sessile assemblage was dominated by bryozoans (35 taxa), with the remainder comprised of bivalve molluscs (11 taxa), hydroids (eight taxa), barnacles (six taxa) and polychaetes (three taxa). Porifera (nine groups) were identified to morphological groups, while ascidians (split into colonial and solitary) and anthozoa (anemones) were broadly grouped, due to difficulty in identifying these taxa to species level. The proportion of major taxonomic groups found in the holdfasts was more or less consistent across sites, with the exception of sites B3 and C3, which lacked the high biomass of bryozoans characteristic of other sites, and of site C1, where holdfasts supported a high biomass of ascidians, and very low biomass of polychaetes and bryozoans (Fig 4A).

Metric MDS plots indicated some degree of partitioning between regions and, in some cases, between sites within regions (Fig 5A). Sites within regions A and D were distinctly grouped, but regions B, and particularly C, exhibited considerable variability between sites (Fig 5A). There was limited evidence of partitioning in structure between the cool northern regions and the warmer southern regions, even when centroids were averaged by site (Fig 5B). PERMANOVA detected significant variability between regions and between sites nested within regions, as well as a significant effect of the co-variate (Table 3). Pairwise tests within the region factor showed that assemblages in north Scotland were distinct from those in west Scotland and southwest England, which were also dissimilar from one another. PERMDISP showed significant differences between regions in within-factor multivariate dispersion ($F_{3,86}$

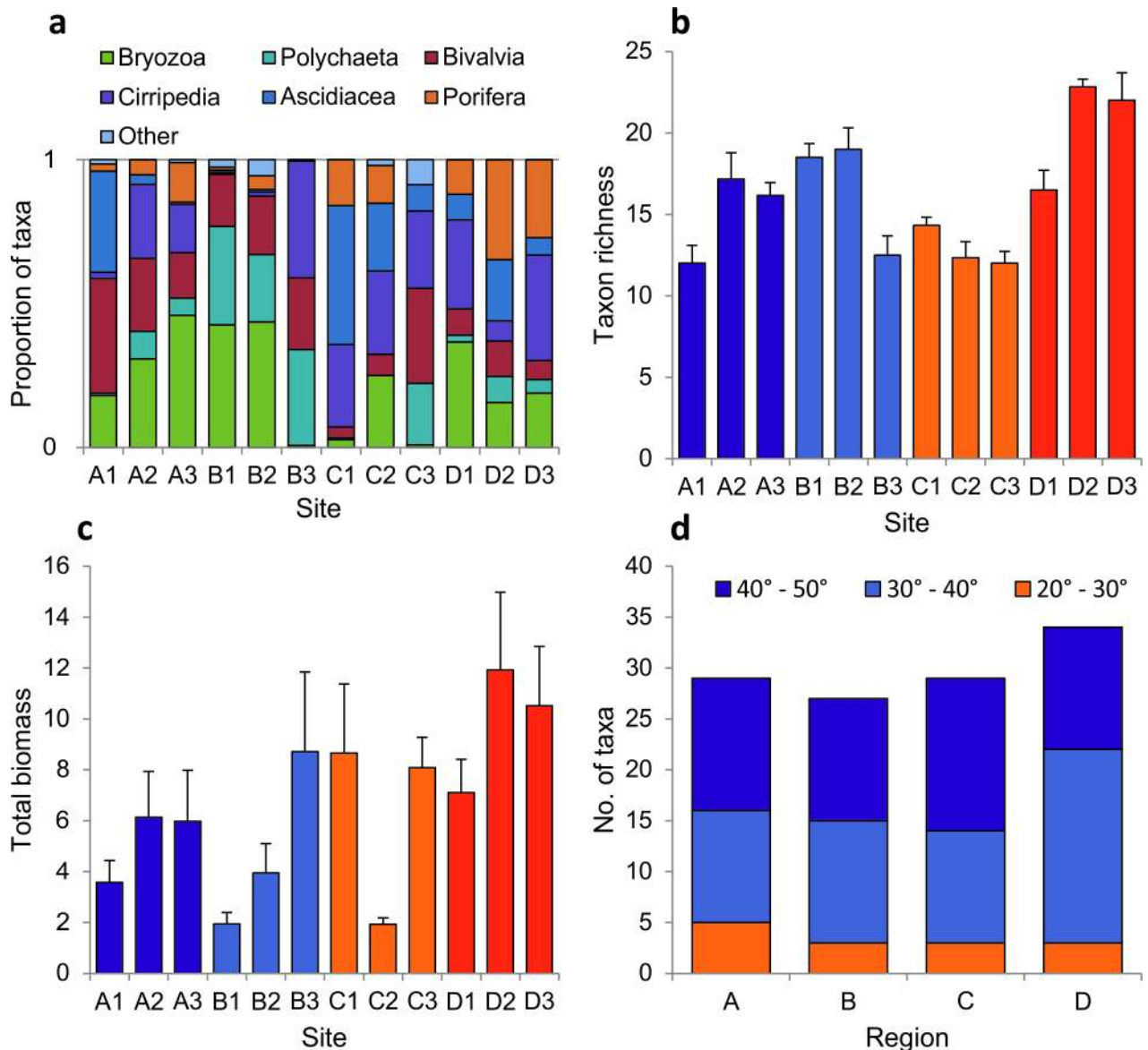


Fig 4. Univariate assemblage-level metrics for sessile holdfast assemblages: (a) the proportion of major taxonomic groups, (b) sessile assemblage taxon richness, (c) total biomass of sessile organisms, (d) taxa equatorward range edge. Values for (b) and (c) are means of 6 replicate holdfasts per site (\pm SE).

<https://doi.org/10.1371/journal.pone.0200411.g004>

= 29.22, $P < 0.001$), with variability between holdfast samples from Wales (region C) considerably greater than elsewhere.

SIMPER analysis indicated that the observed differences between regions were driven primarily by a higher biomass of sponges (*Demosponge A* and *F*), colonial ascidians (*Didemniidae*) and the barnacle *Verruca stroemia* in southwest England compared to west and north Scotland (S2 and S3 Tables). Holdfasts in west Scotland typically supported a high biomass of the barnacle *Balanus crenatus* but lacked the bryozoan *Celleporina caliciformis*, which was common in both north Scotland and southwest England (S2 and S3 Tables).

Taxon richness varied between sites within regions but, in general, the values tended to be highest in southwest England and lowest in Wales (Fig 4B). Total biomass exhibited high

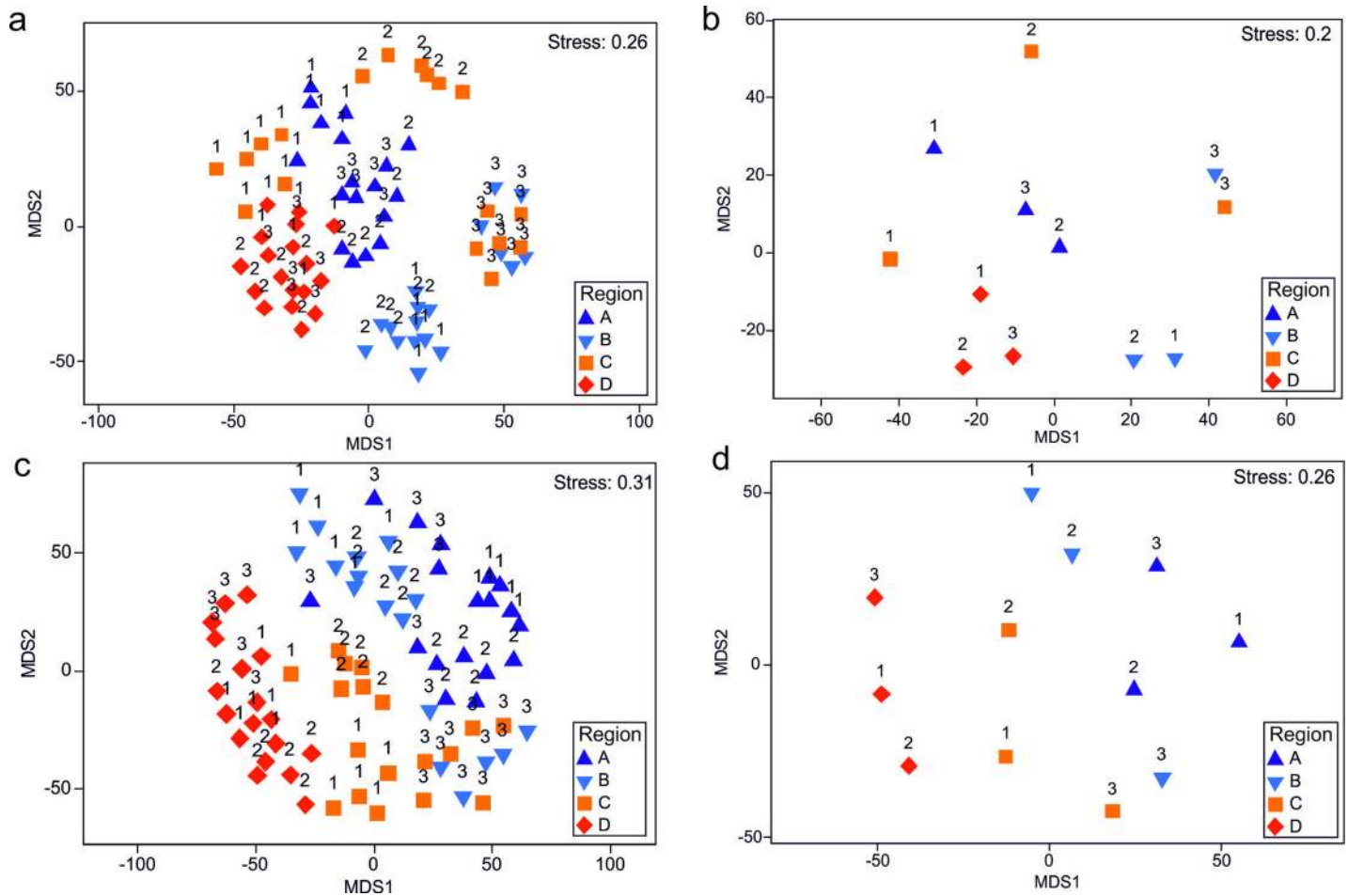


Fig 5. mMDS plots depicting the structure of sessile faunal assemblages, with centroids representing (a) individual holdfast samples (b) and site averages. Similarly mMDS plots depicting the structure of mobile faunal assemblages, with centroids representing (c) individual holdfasts and (d) site averages). Labels indicate sites and symbols indicate regions.

<https://doi.org/10.1371/journal.pone.0200411.g005>

variability between replicate holdfasts and between sites, but no clear regional patterns (Fig 4C). Indeed, univariate PERMANOVA detected significant differences between sites but no effect of region for these metrics, and no significant effect of the co-variate (Table 3). The biogeographic affinities of species within the assemblages were fairly consistent across the regions, with similar proportions of ‘warm’ and ‘cool’ water species (Fig 4C).

The DISTLM routine was used to determine links between environmental predictor variables and variability in sessile assemblage structure. Marginal tests showed that wave fetch, wave-driven water motion and kelp holdfast age were, individually, the most important predictor variables. The stepwise selection procedure indicated that the most parsimonious model included all environmental variables, which explained 54% of the total observed variability in sessile assemblage structure (Table 4).

Mobile assemblages

Study-wide, a total of 187 mobile taxa were recorded from 72 holdfasts (S1 Table) and, typically, holdfasts supported an array of mobile taxa (Fig 1). Of all the groups recorded, polychaete worms dominated by richness, making up over a third of the taxa identified (64 taxa).

Table 3. Results of multivariate PERMANOVA to test for differences in holdfast sessile (a) and mobile (b) assemblage between regions (fixed) and sites (random, nested within region). Habitable holdfast space (HHS) was included as a covariable in the analysis. Permutations were based on a Bray-Curtis similarity matrix generated from fourth-root transformed biomass/abundance data. Results of univariate PERMANOVA to test for differences in assemblage-level univariate metrics (taxon richness and total biomass) in holdfast assemblages are also shown (c–f). Permutations for univariate analysis were based on a Euclidean distance similarity matrix generated from untransformed diversity data. All tests used a maximum of 4999 permutations under a reduced model; significant effects ($P < 0.05$) are shown in bold. An underlined P -value indicates that PERMDISP detected significant differences in within-group dispersion between levels of that factor ($P < 0.05$).

Source	a. Sessile Assemblage					b. Mobile Assemblage				
	df	MS	F	P		df	MS	F	P	
HHS	1	9222.1	2.084	0.027		1	9555.6	1.822		0.017
Region	3	10942	1.935	0.031		3	14436	2.219		0.005
Site(Region)	8	5824.1	10.83	0.001		8	6682.7	5.329		0.001
Residual	59	537.67				59	1254.1			
Total	71					71				
	c. Sessile Taxon Richness					d. Mobile Taxon Richness				
HHS	1	24.958	0.534	0.477		1	49925	5.705		0.032
Region	3	176.35	2.954	0.116		3	1733.9	0.178		<u>0.867</u>
Site(Region)	8	61.503	10.48	0.001		8	9942.1	650.1		0.001
Residual	59	5.8712				59	15.294			
Total	71					71				
	e. Sessile Total Biomass					f. Mobile Total Abundance				
HHS	1	91.856	4.230	0.062		1	3.09E+05	10.74		0.005
Region	3	99.772	3.581	<u>0.065</u>		3	43348	1.389		<u>0.310</u>
Site(Region)	8	28.714	12.67	0.001		8	31763	4.681		0.001
Residual	59	2.2670				59	6785.5			
Total	71					71				

<https://doi.org/10.1371/journal.pone.0200411.t003>

Crustacean groups were also numerous and diverse: gammaridean amphipods (infraorder Gammarida; 37 taxa), Decapoda (order; 13 taxa), Isopoda (order; 11 taxa), Mysida (order; three taxa), Leptostraca (order; one taxon) and Tanaidecea (order; one taxon). Mollusca were also well represented: Gastropoda (class; 34 taxa) and Polyplacophora (class; four taxa). The remainder of the assemblage comprised echinoderms (class Ophiuroidea, class Asteroidea, class Echinoidea, and class Holothuroidea; eight taxa), Pycnogonida (class; four taxa), and three other groups (class Turbellaria, phylum Nemertea, and phylum Sipuncula; four taxa). A sample from southwest England (D1) included a fish (family Gobiesocidae). Mobile fauna were most abundant in northern Scotland (a maximum of >800 individuals per holdfast), which were characterised by high abundances of a few amphipod taxa (namely *Jassa* spp.,

Table 4. DISTLM marginal test results for each environmental predictor variable selected for the most parsimonious model for sessile assemblages. The best solution based on stepwise selection and AICc criteria is shown. SS = sum of squares (trace), Prop. = proportion of variation explained.

Variable	SS	Pseudo-F	P	Prop.
Wave fetch	16127	10.83	0.001	0.134
Wave driven water motion	14886	9.879	0.001	0.124
Kelp age	14268	9.414	0.001	0.119
Holdfast habitable space	10606	6.765	0.001	0.088
Summer temperature	9665	6.112	0.001	0.080
Tidal driven water motion	5489	3.345	0.002	0.046
Summer light intensity	6390	3.925	0.001	0.053
Phosphate concentration	4846	2.937	0.005	0.040
Best solution: All variables (R²: 0.54, AICc: 499.8)				

<https://doi.org/10.1371/journal.pone.0200411.t004>

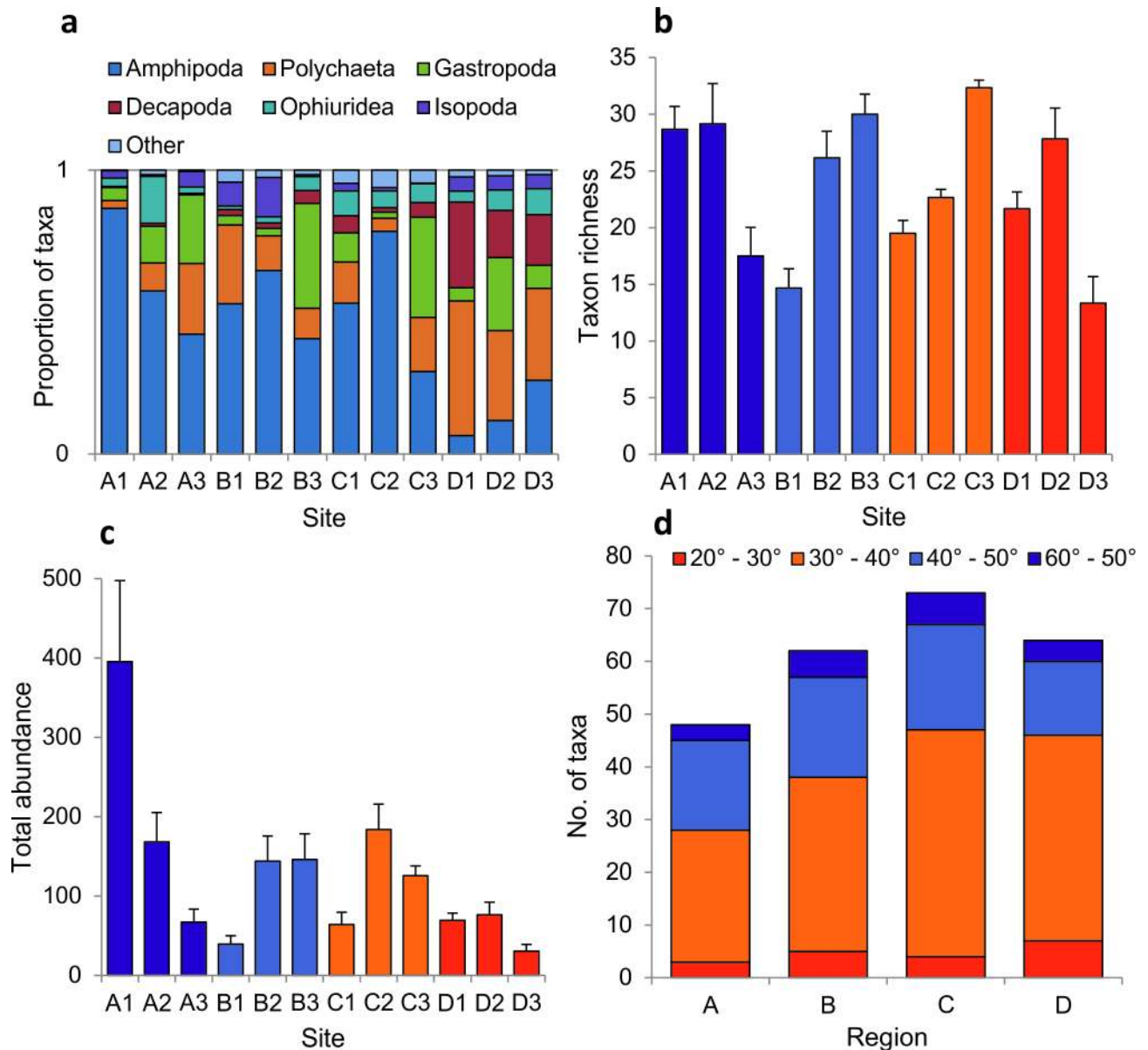


Fig 6. Univariate assemblage-level metrics for mobile holdfast assemblages: (a) the proportion of major taxonomic groups, (b) mobile assemblage taxon richness, (c) total biomass of mobile organisms, (d) taxa equatorward range edge. Values for (b) and (c) are means of 6 replicate holdfasts per site (\pm SE).

<https://doi.org/10.1371/journal.pone.0200411.g006>

Parajassa pelagica and *Ampithoe* spp.). Study-wide abundances of mobile fauna were, however, highly variable with the lowest value (16 individuals per holdfast) recorded in southwest England. Numerically, amphipods dominated all sites with the notable exception of sites in SW England (D1-D3), which were characterised by high relative abundances of polychaetes and decapod crustaceans (Fig 6A).

Metric MDS plots showed some partitioning between regions, but these patterns were not as clear as those observed in the sessile assemblage data (Fig 5C). Similarly, while the mMDS plots showed some partitioning between sites, within regions, this is less evident than those observed for sessile assemblages; generally, there is considerably more variation in mobile assemblages, both within regions, and within sites. Interestingly, there was some evidence of

Table 5. DISTLM marginal test results for each environmental predictor variable selected for the most parsimonious model for mobile assemblages. The best solution based on stepwise selection and AICc criteria is shown. SS = sum of squares (trace), Prop. = proportion of variation explained.

Variable	SS	Pseudo-F	P	Prop.
Summer temperature	21147	9.299	0.001	0.117
Wave fetch	15245	6.464	0.001	0.085
Summer light intensity	14745	6.234	0.001	0.082
Holdfast habitable space	12673	5.291	0.001	0.070
Kelp age	10553	4.351	0.001	0.059
Tidal driven water motion	9813	4.029	0.001	0.054
Wave driven water motion	8477	3.453	0.001	0.047
Phosphate concentration	6525	2.629	0.003	0.036
Best solution: All variables (R²: 0.47, AICc: 539.0)				

<https://doi.org/10.1371/journal.pone.0200411.t005>

partitioning between the two southern regions (C & D) and the two northern regions (A & B), a pattern not observed for sessile assemblages (Fig 5D). PERMANOVA identified significant differences between regions and sites, as well as a significant effect of the co-variate (Table 3). Pairwise tests within the region factor showed that assemblages in southwest England were statistically distinct from those in other regions. PERMDISP did not detect any significant differences in multivariate dispersion between regions ($F_{3,68} = 0.92, P = 0.486$).

SIMPER analysis showed that the observed differences between regions were driven primarily by a markedly lower abundance of the amphipod *Jassa* spp. within southwest England compared to the other regions (S4 and S5 Tables). The abundance of other amphipods (e.g. *Lysianassa certatina*, *Ampithoe* spp., *Lembos websteri*, *Erichthonius* sp., *Caprella* spp.) was notably lower in southwest England compared with the other regions, and was a major contributor to the observed dissimilarity between regions. Samples from southwest England were characterised by high abundances of the crab *Pisidia longicornis* and the sabellid polychaete *Bran-chiomma bombyx* compared to all other regions (S4 and S5 Tables).

Taxon richness varied markedly between sites within regions, with values across regions being comparable (Fig 6B). Total abundance varied by a factor of ~8 within a single region (north Scotland), with the lowest values recorded at sites in southwest England (Fig 6C). For both metrics, we recorded a significant effect of site and the co-variate, but no overall effect of region (Table 3). As with the sessile assemblage, the biogeographic affinities of species within the assemblages was fairly consistent across the regions, with similar proportions of ‘warm’ and ‘cool’ water species (Fig 6D).

The DISTLM routine showed that, based on marginal tests, summer temperature, wave fetch and summer light intensity were the most important predictors of mobile assemblage structure (Table 5). The stepwise selection procedure indicated that the most parsimonious solution, which explained 47% of the total observed variability in assemblage structure, included all the predictor variables (Table 5).

Relationships between sessile and mobile assemblages

Spatial variability patterns of sessile and mobile assemblages were not well correlated. Similarity matrices generated at the holdfast level were very weakly correlated ($\rho = 0.27, P = 0.01$), whereas matrices generated at the site ($\rho = 0.21, P = 0.07$) and region ($\rho = 0.04, P = 0.50$) level were not correlated, indicating that sessile and mobile assemblages exhibited distinct variability patterns at all spatial scales. Similarly, there was no correlation in taxon richness ($r = -0.19, P = 0.15, S1 Fig$) or total biomass/abundance ($r = -0.05, P = 0.68, S1 Fig$) between sessile and mobile assemblages.

Discussion

Kelp holdfasts are important repositories of biodiversity in coastal marine ecosystems. The assemblages sampled in this study were highly diverse, in some cases highly abundant, and fairly typical of *Laminaria hyperborea* holdfasts described in previous research [2, 45, 56, 75]. We recorded a study-wide richness value of 261 distinct taxa, while average richness per holdfast was ~40 taxa (i.e. combined averages for sessile and mobile richness). These values are comparable, but notably higher, than most previous reports of holdfast richness, with the exception of *Ecklonia radiata* holdfasts in Australasia and *L. hyperborea* holdfasts in Norway (see [38] for a comprehensive review). These values are also comparable to study-wide richness values for macroinvertebrate assemblages associated with seagrass beds in both the Mediterranean and Western Australia [76, 77], which are widely regarded as habitats with high biodiversity value [78]. With regards to faunal densities, average mobile invertebrate abundance exceeded ~400 individuals per holdfast at one study site but was typically >150 individuals per holdfast, while mean biomass of sessile assemblages was typically ~10 g per holdfast. Given that densities of mature *L. hyperborea* plants are in the order of 10 plants m⁻² at these study sites [58], a simple approach to ‘scaling up’ would yield estimates of faunal abundance of 1500 inds.m⁻² and faunal biomass of 100 g m⁻² for holdfast assemblages alone. As *L. hyperborea* populations in the UK are predicted to inhabit an area in the region of 8,100 [58] to 16,000 km² [64], holdfast associated assemblages are likely to play a significant role in trophic processes and wider coastal ecosystem functioning.

We recorded marked between-region and between-site variability in the structure of both sessile and mobile macrofaunal assemblages. In general, mobile assemblages were more diverse than their sessile equivalents, and tended to be more heterogeneous and spatially variable. Although we observed considerable regional-scale variability, we did not record predictable shifts in assemblage diversity or structure with latitude. That is, differences between regions did not generally correspond with sequential shifts in latitude or temperature. For sessile taxa, holdfast assemblages in north Scotland, west Scotland and southwest England were all distinct from one another, whereas assemblages from Wales were far more heterogeneous and were not dissimilar to other regions. For mobile assemblages, there was some indication of latitudinal shifts in structure (see below) and, despite high site-level variability, assemblages in southwest England were statistically distinct from those in other regions. Evidence of regional-scale variability contrasts with a comparable study on *E. radiata* holdfasts in New Zealand [66], which found holdfast assemblages structure to be relatively consistent and predictable along a gradient of 2° in latitude and >300 km of coastline. As our study encompassed a larger spatial gradient, it is likely that between-region variability in key drivers of ecological pattern such as temperature, wave exposure and primary productivity in the overlying water column was more influential.

For example, while wave fetch and local water motion were broadly comparable between regions, overall wave exposure values were slightly greater in north Scotland and southwest England compared to west Scotland and southwest Wales (except C1). *L. hyperborea*, like many other kelp species, exhibits morphological adaptations to hydrodynamic forcing, including the development of larger holdfasts under wave exposed conditions [79], which was perhaps reflected in the generally larger holdfasts in north Scotland and (to a lesser extent) southwest England. The size and shape of the holdfast habitat can be an important driver of diversity and abundance of associated assemblages in some systems [41, 51, 56], although this relationship has been shown to break down elsewhere [2, 80], and may be more important for smaller, younger holdfasts [39, 66]. Here, differences in holdfast structure may also be driven, at least in part, by regional-scale variability in biogenic habitat structure. Other possible drivers

of variability operating across regional scales include patterns of dispersal and connectivity, coastal geomorphology and differences in proximal habitat types and potential source populations.

Similarly, regional scale variability in turbidity, sedimentation and the supply of organic matter may be important in determining holdfast assemblage structure. In this case, holdfasts from southwest England were largely distinct from those elsewhere, primarily because of markedly lower abundances of amphipods, and higher relative abundances of crabs, polychaetes, and sponges. The marine environments around Wales (i.e. the Irish Sea) and West Scotland (i.e. the Firth of Lorne) are typically more turbid, with higher levels of suspended material [41, 58], and holdfasts here were characterised by high silt deposition. A considerable proportion of the mobile assemblages at these sites was composed of filter and deposit feeding amphipods (e.g. *Jassa* spp., *Monocorophium sextonae*), which would conceivably benefit from high levels of particulate organic matter. In contrast, the less turbid waters in southwest England could favour different taxa, and could explain a lower dominance of amphipod deposit feeders and a higher dominance of omnivorous crabs. As such, regional-scale differences in turbidity or the deposition of organic matter from riverine inputs or pelagic primary production may influence the development of holdfast assemblages and trophic structuring [25, 51]. Unfortunately, we did not directly measure the sediment content of each holdfast, which would have been a useful predictor variable given that previous research has shown correlations between the abundances of taxa and sediment loads [51]. Given that coastal development and maritime activities (e.g. dredging) can alter sedimentation rates, further investigation into the influence of sediment content on holdfast assemblages would be useful.

The structure of mobile assemblages did exhibit some latitudinal patterns, with some distinction in multivariate structure between northernmost (north and west Scotland) and southernmost (southwest Wales and southwest England) sites, and sea temperature emerging as an important explanatory variable. This was largely driven by a general increase in the relative abundance of amphipods from south to north and, in contrast, an increase in the relative abundance of decapods and polychaetes from north to south. Conversely, sessile species were widely distributed across the regions and sessile assemblages were more influenced by wave exposure and local water motion. Such differences in variability patterns between mobile and sessile fauna may be linked to dispersal potential. The most abundant mobile fauna, in this instance gammaridean amphipods, tend to brood their offspring and may have relatively limited dispersal potential compared to many commonly found sessile fauna, which have a planktonic larval stage [81–84]. Moreover, recent work has shown that the structure of kelp forests varies with latitude along the gradient encapsulated in this study [19] and, as different kelp species may harbour distinct associated assemblages [47, 85–87], the composition of the wider kelp forest may potentially play a role in the development of distinct, regional holdfast assemblages. This may be particularly important for mobile assemblages, as some common taxa (e.g. amphipods and isopods) have been shown to move freely throughout kelp forests and even to emigrate to adjacent systems [75, 88]. As such, the structure and configuration of surrounding habitats, and their associated species pools, is likely to play an important role in the structuring of holdfast assemblages and may vary somewhat predictably with latitude.

Pronounced site-level variability was an important component of the observed spatial variation in holdfast community structure and diversity, suggesting that environmental factors varying across similar spatial scales, such as wave exposure, could be important in determining ecological pattern. Previous research has highlighted the importance of hydrodynamic forces (i.e. the action of waves and the tide) in structuring marine communities [23, 24, 89], including kelp systems [22, 79, 90–92], and in relation to kelp-associated assemblages in particular [21, 93, 94]. The effect of wave exposure on the morphology of *L. hyperborea* is well documented

(e.g. the development of larger holdfasts [79]), and as faunal diversity is often (but not always) related to habitat size, a relationship exists between wave exposure and kelp associated faunal diversities [2, 21, 66, 80, 93–97]. Intense wave action represents a physical disturbance to algal associated fauna, and may result in considerable loss of fauna due to dislodgement and mortality [49, 50]. The reduced diversity and abundances of communities associated with holdfasts from the most wave exposed sites (i.e. A1) in this study suggest this process may play a role within kelp holdfasts. The largest holdfasts, by some margin, were found at site A1, the most exposed site in north Scotland. While the mobile assemblage associated with these holdfasts was diverse and abundant, as one would expect, the sessile assemblage was comparatively depauperate in relation to the apparent habitable space available. Holdfasts from this site were missing the high abundances and biomass of common bryozoan species in particular, and were characterised by a high sediment load made of coarse sand, and had an almost ‘sand-blasted’ look. It is likely that the strong wave motion characteristic of this site, coupled with the large, open nature of the holdfasts, caused smothering of delicate filter-feeding organisms, such as the bryozoans so characteristic of other sites.

Interestingly, the potential effects of wave exposure seemed to be more pronounced on sessile, rather than on mobile assemblages. This impact is potentially due to the influence of sedimentation, which can smother delicate filter-feeding sessile organisms [25] but may have exerted a positive influence over other taxa [51]. Site-level variability may also be promoted by differences in reef structure and substratum characteristics. Topographic complexity, the prevalence of large boulders versus pavement-like platforms, and reef rugosity may influence kelp population structure [98–100]. As such, variation in holdfast morphology (i.e. relative holdfast volume) driven by site-level differences in reef structure may have influenced the development and richness of associated assemblages. Other factors that have been identified as important drivers of site-level variability in holdfast assemblages include pollution [101], kelp harvesting and farming [80, 102] and grazing pressure [103, 104]. However, given the negligible impact of these activities and processes across the current study area [8], they were unlikely to be important in this case.

In addition to the variability between regions and between sites, we recorded pronounced small-scale variability between individual holdfasts separated by a few meters. Marine benthic communities generally exhibit considerable small-scale variability [105, 106], which is driven by a range of processes operating across multiple spatial, and temporal scales [61]. Combined with the highly variable nature of supply-side ecology [107], the inter-holdfast variability recorded here is perhaps not surprising. Small-scale variations in food availability, protection from predation, water movement and sedimentation (e.g. due to proximity to topographical reef features which may attenuate wave action), and differences in species’ tolerance to smothering or dislodgement may also influence assemblage structure [61, 108, 109]. Moreover, the structure of the kelp forest itself can induce small-scale variability in associated assemblages; kelp plant density, the wider habitat matrix, the level of patchiness and whether the kelp canopy is monospecific or mixed have been shown to influence local diversity patterns [110–112]. Indeed, much of the variability observed in holdfast community structure throughout this study was unexplained by the environmental factors measured. It is likely that these factors were measured at a spatial scale too large to account for within-site variation, highlighting the need for more research into the small, local scale drivers of holdfast assemblage development and maintenance.

In conclusion, faunal assemblages associated with *L. hyperborea* holdfasts are highly diverse and exhibit considerable structural variability over multiple spatial scales. Crucially, the sessile and mobile components of holdfast assemblages exhibited different patterns and may be influenced by key environmental drivers, specifically variability in wave exposure and temperature,

to differing degrees due to divergence in life histories or growth strategy. It is evident that *L. hyperborea* serves as a critical foundation species in shallow rocky habitats in the northeast Atlantic by providing biogenic habitat, altering environmental conditions and exerting a strong influence over local biodiversity and community structure. Within UK waters, our study suggests that local scale environmental variability is more important in structuring kelp-associated assemblages than latitudinal-scale variation in sea temperature. However, given that sea water temperatures around the UK have significantly increased in recent decades [113], and are predicted to continue to rise through the next century [114], it is likely that temperature will begin to play a larger role in structuring the biogenic habitat provided by *L. hyperborea*, and thereby its associated assemblages, in the near future. The ecophysiology of *L. hyperborea* is adversely impacted by temperatures above 20°C [115], and as the southernmost regions of the UK currently experience temperatures of this magnitude during anomalous warming events [116] and are projected to experience such temperatures more frequently in the coming decades [114], the continued provision of biogenic habitat is at risk from future climate change. Any climate-driven reduction in the biomass, density, spatial extent or longevity of *L. hyperborea* will likely result in a reduction of habitat available for colonisation and consequent changes to community structure and local biodiversity [87]. Indeed, further south on the Iberian Peninsula, *L. hyperborea* has retracted its equatorward range edge as marginal populations have responded to ocean warming [20, 60], and key ecological functions including habitat provision and benthic primary productivity have been lost or altered. Changes in habitat provision will likely influence holdfast assemblage structure, and in doing so, affect the usefulness of kelp holdfasts for biodiversity monitoring and detecting local environmental impacts [117]. Clearly, a better understanding of the drivers of kelp community structure, including an improved appreciation of species interactions in a rapidly changing environment, is required to predict the structure and conserve the diversity of these ecosystems in the coming decades.

Supporting information

S1 Table. Complete list of taxa identified, including higher taxonomic groups. Crosses denote in which regions examples of each taxa were recorded. Sessile assemblage precedes mobile assemblage.

(DOCX)

S2 Table. Percentage contributions of individual taxa to observed differences in sessile holdfast assemblages between regions, as determined by SIMPER analysis. Biomass values were fourth-root transformed and standardised by habitable holdfast space prior to analysis.

(DOCX)

S3 Table. Mean biomass values (\pm SE) for taxa that contributed most to the observed dissimilarities in sessile assemblage structure between regions, as determined by SIMPER (see S2 Table).

(DOCX)

S4 Table. Percentage contributions of individual taxa to observed differences in mobile holdfast assemblages between regions, as determined by SIMPER analysis. Abundance values were fourth-root transformed and standardised by habitable holdfast space prior to analysis.

(DOCX)

S5 Table. Mean abundance values (\pm SE) for taxa that contributed most to the observed dissimilarities in mobile assemblage structure between regions, as determined by SIMPER (see S4 Table).

(DOCX)

S1 Fig. Scatterplots of (a) taxon richness and (b) total biomass/abundance of sessile versus mobile assemblages. Each data point represents a single holdfast sample (north Scotland = dark blue; west Scotland = light blue; west Wales = pink; southwest England = dark red).

(DOCX)

Acknowledgments

H.T. is funded through the National Environmental Research Council (NERC) Doctoral Training Partnership SPITFIRE (NE/L002531/1), administered through Southampton University. D.A.S. was supported by an Independent Research Fellowship awarded by the Natural Environment Research Council of the UK (NE/K008439/1), PM was supported through a Marie Curie Career Integration Grant (PCIG10-GA-2011-303685). Some of the fieldwork was supported by the NERC National Facility for Scientific Diving (NFSD/14/01). We thank Keith Hiscock (Fig 1B and 1E) and Alix Harvey (1d) for contributing images for Fig 1.

Author Contributions

Conceptualization: Harry Teagle, Pippa J. Moore, Helen Jenkins, Dan A. Smale.

Data curation: Pippa J. Moore, Helen Jenkins, Dan A. Smale.

Formal analysis: Harry Teagle, Helen Jenkins, Dan A. Smale.

Funding acquisition: Dan A. Smale.

Investigation: Harry Teagle.

Methodology: Pippa J. Moore.

Supervision: Dan A. Smale.

Writing – original draft: Harry Teagle, Pippa J. Moore, Dan A. Smale.

Writing – review & editing: Harry Teagle, Pippa J. Moore, Helen Jenkins, Dan A. Smale.

References

1. Osman RW. The establishment and development of a marine epifaunal community. *Ecol Monogr.* 1977; 47:37–63.
2. Christie H, Jorgensen NM, Norderhaug KM, Waage-Nielsen E. Species distribution and habitat exploitation of fauna associated with kelp (*Laminaria hyperborea*) along the Norwegian coast. *J Mar Biol Assoc U K.* 2003; 83(4):687–99. <https://doi.org/10.1017/S0025315403007653h> PubMed PMID: ISI:000185202300003.
3. Watanabe JM. The influence of recruitment, competition, and benthic predation on spatial distributions of three species of kelp forest Gastropods (Trochidae: Tegula). *Ecology.* 1984; 65(3):920–36.
4. Richmond MD, Seed R. A review of marine macrofouling communities with special reference to animal fouling. *Biofouling.* 1991; 3:151–68.
5. Harrold C, Reed DC. Food availability, sea urchin grazing, and kelp forest community structure. *Ecology.* 1985; 66(4):1160–9. <https://doi.org/10.2307/1939168>
6. Bulleri F, Chapman MG. The introduction of coastal infrastructure as a driver of change in marine environments. *J Appl Ecol.* 2010; 47:26–35.

7. Brodie J, Williamson CJ, Smale DA, Kamenos NA, Mieszkowska N, Santos R, et al. The future of the northeast Atlantic benthic flora in a high CO₂ world. *Ecol Evol.* 2014; 4(13):2787–98. <https://doi.org/10.1002/ece3.1105> PMID: 25077027
8. Smale DA, Burrows MT, Moore P, O'Connor N, Hawkins SJ. Threats and knowledge gaps for ecosystem services provided by kelp forests: a northeast Atlantic perspective. *Ecol Evol.* 2013; 3(11):4016–38. Epub 2013/11/08. <https://doi.org/10.1002/ece3.774> PMID: 24198956; PubMed Central PMCID: PMC3810891.
9. Steneck RS, Graham MH, Bourque BJ, Corbett D, Erlandson JM, Estes JA, et al. Kelp forest ecosystems: biodiversity, stability, resilience and future. *Environ Conserv.* 2002; 29(4):436–59. <https://doi.org/10.1017/S0376892902000322> PubMed PMID: ISI:000182033200004.
10. Steneck RS, Johnson CR. Kelp forests: dynamic patterns, processes and feedbacks. In: Burtness MD, Bruno J, Silliman BR, Stachowicz JJ, editors. *Marine community ecology*. Massachusetts, USA: Sinauer Associates, Inc.; 2013. p. 315–36.
11. Scheffers BR, Meester LD, Bridge TCL, Hoffman AA, Pandolfi JM, Corlett RT, et al. The broad footprint of climate change from genes to biomes to people. *Science.* 2016; 354(6313). <https://doi.org/10.1126/science.aaf7671> PMID: 27846577
12. Parmesan C, Yole G. A globally coherent fingerprint of climate change impacts across natural systems. *Nature.* 2003; 421(6918):37–42. Epub 2003/01/04. <https://doi.org/10.1038/nature01286> PMID: 12511946.
13. Wernberg T, Thomsen MS, Tuya F, Kendrick GA, Staehr PA, Toohey BD. Decreasing resilience of kelp beds along a latitudinal temperature gradient: potential implications for a warmer future. *Ecol Lett.* 2010; 13(6):685–94. Epub 2010/04/24. <https://doi.org/10.1111/j.1461-0248.2010.01466.x> PMID: 20412279.
14. Moy FE, Christie H. Large-scale shift from sugar kelp (*Saccharina latissima*) to ephemeral algae along the south and west coast of Norway. *Mar Biol Res.* 2012; 8(4):309–21. <https://doi.org/10.1080/17451000.2011.637561> PubMed PMID: ISI:000302439700001.
15. Mieszkowska N, Kendall MA, Hawkins SJ, Leaper R, Williamson P, Hardman-Mountford NJ, et al. Changes in the range of some common rocky shore species in Britain—response to climate change? *Hydrobiologia.* 2006; 555:241–51. <https://doi.org/10.1007/s10750-005-1120-6> PubMed PMID: ISI:000234198500021.
16. Hawkins SJ, Sugden HE, Mieszkowska N, Moore PJ, Poloczanska E, Leaper R, et al. Consequences of climate-driven biodiversity changes for ecosystem functioning of North European rocky shores. *Mar Ecol Prog Ser.* 2009; 396:245–59. <https://doi.org/10.3354/Meps08378> PubMed PMID: ISI:000273549400023.
17. Sunday JM, Bates AE, Dulvy NK. Thermal tolerance and global distribution of animals. *Nature Clim Change.* 2012; 2:686–90. <https://doi.org/10.1038/NCLIMATE1539>
18. Wernberg T, Thomsen MS, Tuya F, Kendrick GA. Biogenic habitat structure of seaweeds change along a latitudinal gradient in ocean temperature. *J Exp Mar Biol Ecol.* 2011; 400(1–2):264–71. <https://doi.org/10.1016/j.jembe.2011.02.017> PubMed PMID: ISI:000291143900025.
19. Smale DA, Moore PJ. Variability in kelp forest structure along a latitudinal gradient in ocean temperature. *J Exp Mar Biol Ecol.* 2017; 486:255–64.
20. Tuya F, Cacabelos E, Duarte P, Jacinto D, Castro JJ, Silva T, et al. Patterns of landscape and assemblage structure along a latitudinal gradient in ocean climate. *Mar Ecol Prog Ser.* 2012; 466:9–+. <https://doi.org/10.3354/Meps09941> PubMed PMID: ISI:000309838100002.
21. Norderhaug KM, Christie H, Rinde E, Gundersen H, Bekkby T. Importance of wave and current exposure to fauna communities in *Laminaria hyperborea* kelp forests. *Mar Ecol Prog Ser.* 2014; 502:295–301. <https://doi.org/10.3354/Meps10754> PubMed PMID: ISI:000334670700023.
22. Pedersen MF, Nejrup LB, Fredriksen S, Christie H, Norderhaug KM. Effects of wave exposure on population structure, demography, biomass and productivity of the kelp *Laminaria hyperborea*. *Mar Ecol Prog Ser.* 2012; 451:45–60. <https://doi.org/10.3354/meps09594> PubMed PMID: ISI:000303908000004.
23. Ballantine WJ. A biologically defined exposure scale for the comparative description of rocky shores. *Field Stud.* 1961; 1:1–19.
24. Brattström H. The importance of water movement for biology and distribution of marine organisms. 2nd European symposium on marine biology. *Sarsia.* 1968; 34:9–12.
25. Moore PG. The kelp fauna of northeast Britain. II. Multivariate classification: turbidity as an ecological factor. *J Exp Mar Biol Ecol.* 1973; 13:127–63.
26. Ling SD, Scheibling RE, Rassweiler A, Johnson CR, Shears N, Connell SD, et al. Global regime shift dynamics of catastrophic sea urchin overgrazing. *Philos Trans R Soc B.* 2015; 370:20130269.

27. Loya Y. Effects of water turbidity and sedimentation on the community structure of Puerto Rican corals. *Bull Mar Sci.* 1976; 26(4):450–66.
28. Burrows MT, Schoeman DS, Buckley LB, Moore P, Poloczanska ES, Brander KM, et al. The pace of shifting climate in marine and terrestrial ecosystems. *Science.* 2011; 334(6056):652–5. Epub 2011/11/05. <https://doi.org/10.1126/science.1210288> PMID: 22053045.
29. Wernberg T, Smale DA, Tuya F, Thomsen MS, Langlois TJ, de Bettignies T, et al. An extreme climatic event alters marine ecosystem structure in a global biodiversity hotspot. *Nature Clim Change.* 2013; 3(1):78–82. <https://doi.org/10.1038/Nclimate1627> PubMed PMID: ISI:000313999000021.
30. Jones CG, Lawton JH, Shachak M. Organisms as ecosystem engineers. *Oikos.* 1994; 69(3):373–86. <https://doi.org/10.2307/3545850> PubMed PMID: ISI:A1994NP63200003.
31. Jurgens LJ, Gaylord B. Physical effects of habitat-forming species override latitudinal trends in temperature. *Ecol Lett.* 2017. <https://doi.org/10.1111/ele.12881> PMID: 29164789
32. Mann KH. Ecological energetics of the sea-weed zone in a marine bay on the Atlantic coast of Canada. II. Productivity of the seaweeds. *Mar Biol.* 1972; 14:199–209.
33. Reed DC, Rassweiler A, Arkema KK. Biomass rather than growth rate determines variation in net primary production by giant kelp. *Ecology.* 2008; 89(9):2493–505. <https://doi.org/10.1890/07-1106.1> PubMed PMID: ISI:000259259300016. PMID: 18831171
34. Jupp BP, Drew EA. Studies on the growth of *Laminaria hyperborea* (Gunn.) Fosl. I. Biomass and productivity. *J Exp Mar Biol Ecol.* 1974; 15:185–96.
35. Krumhansl KA, Scheibling RE. Production and fate of kelp detritus. *Mar Ecol Prog Ser.* 2012; 467:281–302.
36. Pessarrodona A, Moore PJ, Sayer MDJ, Smale DA. Carbon assimilation and transfer through kelp forests in the NE Atlantic is diminished under a warmer ocean climate. *Global Change Biology.* 2018; online early. <https://doi.org/10.1111/gcb.14303> PMID: 29862600
37. Bologna PAX, Steneck RS. Kelp beds as habitat for American lobster *Homarus americanus*. *Mar Ecol Prog Ser.* 1993; 100:127–34.
38. Teagle H, Hawkins SJ, Moore PJ, Smale DA. The role of kelp species as biogenic habitat formers in coastal marine ecosystems. *J Exp Mar Biol Ecol.* 2017; 492:81–98.
39. Ojeda FP, Santelices B. Invertebrate communities in holdfasts of the kelp *Macrocystis pyrifera* from southern Chile. *Mar Ecol Prog Ser.* 1984; 16:65–73.
40. Cancino J, Santelices B. The ecological importance of kelp-like holdfasts as a habitat of invertebrates in Central Chile. II. Factors affecting community organisation. *Proceedings of the International Symposium 10, Sweden.* 1980:241–6.
41. Moore PG. Turbidity and kelp holdfast amphipoda. I. Wales and S. W. England. *J Exp Mar Biol Ecol.* 1978; 32:53–96.
42. Moore PG. Particulate matter in the sublittoral zone of an exposed coast and its ecological significance with special reference to the fauna inhabiting kelp holdfasts. *J Exp Mar Biol Ecol.* 1972; 10:59–80.
43. Jones DJ. Changes in the ecological balance of invertebrate communities in the kelp holdfast habitats of some polluted North Sea waters. *Helgoländer wiss Meeresunters.* 1972; 23:248–60.
44. Moore PG. The kelp fauna of northeast Britain. I. Introduction and the physical environment. *J Exp Mar Biol Ecol.* 1972; 13:97–125.
45. Schaal G, Riera P, Leroux C. Food web structure within kelp holdfasts (*Laminaria*): a stable isotope study. *Mar Ecol Evol Persp.* 2012; 33(3):370–6. <https://doi.org/10.1111/j.1439-0485.2011.00487.x> PubMed PMID: ISI:000306842400011.
46. Smith SDA, Simpson RD, Cairns SC. The macrofaunal community of *Ecklonia radiata* holdfasts: description of the faunal assemblage and variation associated with differences in holdfast volume. *Aust J Ecol.* 1996; 21:81–95.
47. Tuya F, Larsen K, Platt V. Patterns of abundance and assemblage structure of epifauna inhabiting two morphologically different kelp holdfasts. *Hydrobiologia.* 2011; 658(1):373–82. <https://doi.org/10.1007/s10750-010-0527-x> PubMed PMID: ISI:000284598200031.
48. Christie H, Norderhaug KM, Fredriksen S. Macrophytes as habitat for fauna. *Mar Ecol Prog Ser.* 2009; 396:221–33. <https://doi.org/10.3354/Meps08351> PubMed PMID: ISI:000273549400021.
49. Fincham AA. Periodic swimming behaviour of amphipods in Wellington Harbour. *New Zeal J Mar Freshw Res.* 1974; 8(3):505–21.
50. Fenwick GD. The effect of wave exposure on the amphipod fauna of the alga *Caulerpa brownii*. *J Exp Mar Biol Ecol.* 1976; 25:1–18.
51. Smith SDA. The macrofaunal community of *Ecklonia radiata* holdfasts: variations associated with sediment regime, sponge cover and depth. *Austral Ecol.* 1996; 21(2):144–53.

52. Marzinelli EM. Artificial structures influence fouling on habitat-forming kelps. *Biofouling*. 2012; 28(3):339–49. <https://doi.org/10.1080/08927014.2012.674518> PMID: 22452393
53. Smith SDA, Simpson RD. Monitoring the shallow sublittoral using the fauna of kelp (*Ecklonia radiata*) holdfasts. *Mar Pollut Bull*. 1992; 24(1):46–52.
54. Jones DJ. Variation in the trophic structure and species composition of some invertebrate communities in polluted kelp forests in the North Sea. *Mar Biol*. 1973; 20:351–65.
55. Smith SDA, Simpson RD. Recovery of benthic communities at Macquarie Island (sub-Antarctic) following a small oil spill. *Mar Biol*. 1998; 131:567–81.
56. Sheppard CRC, Bellamy DJ, Sheppard LS. Study of the fauna inhabiting the holdfasts of *Laminaria hyperborea* (Gunn.) Fosl. along some environmental and geographical gradients. *Mar Environ Res*. 1980; 4(1):25–51. [https://doi.org/10.1016/0141-1136\(80\)90057-4](https://doi.org/10.1016/0141-1136(80)90057-4) PubMed PMID: ISI: A1980KU95600002.
57. Coleman MA, Vytöpil E, Goodsell PJ, Gillanders BM, Connell SD. Diversity and depth-related patterns of mobile invertebrates associated with kelp forests. *Mar Freshw Res*. 2007; 58(7):589–95.
58. Smale DA, Burrows MT, Evans AJ, King N, Yunnice ALE, Moore PJ. Linking environmental variables with regional-scale variability in ecological structure and standing stock of carbon with kelp forests in the United Kingdom. *Mar Ecol Prog Ser*. 2016; 542:79–95.
59. Wernberg T, Bennett S, Babcock RC, de Bettignies T, Cure K, Depczynski M, et al. Climate-driven regime shift of a temperate marine ecosystem. *Science*. 2016; 353(6295):169–72. <https://doi.org/10.1126/science.aad8745> PMID: 27387951
60. Voerman SE, Llera E, Rico JM. Climate driven change in subtidal kelp forest communities in NW Spain. *Mar Environ Res*. 2013; 90:119–27. <https://doi.org/10.1016/j.marenvres.2013.06.006> PMID: 23948150
61. Foster S, Smale DA, How J, de Lestrang S, Brearley A, Kendrick GA. Regional-scale patterns of mobile invertebrate assemblage structure on artificial habitats off Western Australia. *J Exp Mar Biol Ecol*. 2014; 453:43–53.
62. Tittley I, Farnham WF, Fletcher RL, Irvine DEG. The subtidal marine algal vegetation of Sollum Voe, Shetland, reassessed. *Transactions of the Botanical Society of Edinburgh*. 1985; 44(4).
63. Bekkby T, Rinde E, Erikstad L, Bakkestuen V. Spatial predictive distribution modelling of the kelp species *Laminaria hyperborea*. *ICES J Mar Sci*. 2009; 66:2106–15.
64. Yesson C, Bush LE, Davies AJ, Maggs CA, Brodie J. The distribution and environmental requirements of large brown seaweeds in the British Isles. *J Mar Biol Assoc U K*. 2015; 95(4):669–80.
65. Kain JM. Aspects of the biology of *Laminaria hyperborea*: II. Age, weight and length. *J Mar Biol Assoc U K*. 1963; 43(1):129–51.
66. Anderson MJ, Diebel CE, Blom WM, Landers TJ. Consistency and variation in kelp holdfast assemblages: Spatial patterns of biodiversity for the major phyla at different taxonomic resolutions. *J Exp Mar Biol Ecol*. 2005; 320(1):35–56. <https://doi.org/10.1016/j.jembe.2004.12.023> PubMed PMID: ISI:000229877000003.
67. Figurski JD, Malone D, Lacy JR, Denny M. An inexpensive instrument for measuring wave exposure and water velocity. *Limnol Oceanogr*. 2011; 9:204–14. <https://doi.org/10.4319/lom.2011.9.204> PubMed PMID: ISI:000294604500004.
68. Evans SN, Abdo DA. A cost-effective technique for measuring relative water movement for studies of benthic organisms. *Mar Freshw Res*. 2010; 61:1327–35.
69. Smyth TJ, Fishwick JR, Al-Moosawi L, Cummings DG, Harris C, Kitidis V, et al. A broad spatio-temporal view of the Western English Channel observatory. *J Plankton Res*. 2010; 32(5):585–601.
70. Burrows MT, Harvey R, Robb L. Wave exposure indices from digital coastlines and the prediction of rocky shore community structure. *Mar Ecol Prog Ser*. 2008; 353:1–12.
71. Burrows MT. Influences of wave fetch, tidal flow and ocean colour on subtidal rocky communities. *Mar Ecol Prog Ser*. 2012; 445:193–207.
72. Anderson MJ, Gorley RN, Clarke KR. PERMANOVA+ for PRIMER-E: guide to software and statistical methods. Plymouth: University of Auckland and PRIMER-E; 2008.
73. Clarke KR, Gorley RN. Primer v7: the user manual/tutorial. Plymouth: PRIMER-E; 2015. 296pp p.
74. McArdle BH, Anderson MJ. Fitting multivariate models to community data: a comment on distance-based redundancy analysis. *Ecology*. 2001; 82(1):290–7.
75. Jorgensen NM, Christie H. Diurnal, horizontal and vertical dispersal of kelp associated fauna. *Hydrobiologia*. 2003; 503(1–3):69–76. <https://doi.org/10.1023/B:Hydr.0000008491.89382.E5> PubMed PMID: ISI:000188316000010.

76. Como S, Magni P, Baroli M, Casu D, De Falco G, Floris A. Comparative analysis of macrofaunal species richness and composition in *Posidonia oceania*, *Cymodocea nodosa* and leaf litter beds. *Mar Biol.* 2008; 153:1087–101.
77. Edgar GJ. The influence of plant structure on the species richness, biomass and secondary production of macrofaunal assemblages associated with Western Australian seagrass beds. *J Exp Mar Biol Ecol.* 1990; 137:215–40.
78. Unsworth RKF, Cullen-Unsworth LC. Biodiversity, ecosystem services, and the conservation of seagrass meadows. In: Maslo B, Lockwood JL, editors. *Coastal Conservation*. Cambridge, UK: Cambridge University Press; 2014.
79. Sjøtun K, Fredriksen S. Growth allocation in *Laminaria hyperborea* (Laminariales, Phaeophyceae) in relation to age and wave exposure. *Mar Ecol Prog Ser.* 1995; 126(1–3):213–22. <https://doi.org/10.3354/Meps126213> PubMed PMID: ISI:A1995TD59800019.
80. Walls AM, Kennedy R, Fitzgerald RD, Blight AJ, Johnson MP, Edwards MD. Potential novel habitat created by holdfasts from cultivated *Laminaria digitata*: assessing the macroinvertebrate assemblages. *Aquaculture Environment Interactions.* 2016; 8:157–69.
81. Dick JTA, Faloon SE, Elwood RW. Active brood care in an amphipod: influences of embryonic development, temperature and oxygen. *Animal Behaviour.* 1998; 56:663–72. PMID: 9784215
82. Borowsky B. Reproductive behaviour of three tube-building peracarid crustaceans: the amphipods *Jassa falcata* and *Amphithoe valida* and the tanaid *Tanais cavolinii*. *Mar Biol.* 1983; 77:257–63.
83. Moore PG. The life histories of the amphipods *Lembos websteri* Bate and *Corophium bonnellii* Milne Edwards in kelp holdfasts. *J Exp Mar Biol Ecol.* 1981; 49:1–50.
84. Goldson AJ, Hughes RN, Gliddon CJ. Population genetic consequences of larval dispersal mode and hydrography: a case study with bryozoans. *Mar Biol.* 2001; 138:1037–42.
85. Blight AJ, Thompson RC. Epibiont species richness varies between holdfasts of a northern and southern distributed kelp species. *J Mar Biol Assoc U K.* 2008; 88(3):469–75.
86. Raffo MP, Eyra MC, Iribarne OO. The invasion of *Undaria pinnatifida* to a *Macrocystis pyrifera* kelp in Patagonia (Argentina, south-west Atlantic). *J Mar Biol Assoc U K.* 2009; 89(8):1571–80.
87. Teagle H, Smale DA. Climate-driven substitution of habitat-forming species leads to reduced biodiversity within a temperate marine community. *Diversity and Distributions.* 2018; online early. <https://doi.org/10.1111/ddi.12775>
88. Bartsch I, Wiencke C, Bischof K, Buchholz CM, Buck BH, Eggert A, et al. The genus *Laminaria* sensu lato: recent insights and developments. *Eur J Phycol.* 2008; 43(1):1–86. <https://doi.org/10.1080/09670260701711376> PubMed PMID: ISI:000254487100001.
89. Knights AM, Firth LB, Walters K. Interactions between multiple recruitment drivers: post-settlement predation mortality and flow-mediated recruitment. *PLOS ONE.* 2012; 7(4):e30596. <https://doi.org/10.1371/journal.pone.0035096> PMID: 22493734
90. Molloy FJ, Bolton JJ. The effects of wave exposure and depth on the morphology of inshore populations of the Namibian kelp, *Laminaria schinzii* Foslie. *Bot Mar.* 1996; 39(525–531):525–31. <https://doi.org/10.1515/botm.1996.39.1-6.525> PubMed PMID: ISI:A1996VY78500003.
91. Bekkby T, Rinde E, Gundersen H, Norderhaug KM, Gitmark JK, Christie H. Length, strength and water flow: relative importance of wave and current exposure on morphology in kelp *Laminaria hyperborea*. *Mar Ecol Prog Ser.* 2014; 506:61–70.
92. Wernberg T, Thomsen MS. The effect of wave exposure on the morphology of *Ecklonia radiata*. *Aquat Bot.* 2005; 83(1):61–70. <https://doi.org/10.1016/j.aquabot.2005.05.007> PubMed PMID: ISI:000231655900005.
93. Norderhaug KM, Christie H. Secondary production in a *Laminaria hyperborea* kelp forest and variation according to wave exposure. *Estuar Coast Shelf Sci.* 2011; 95(1):135–44. <https://doi.org/10.1016/j.ecss.2011.08.028> PubMed PMID: ISI:000298266000013.
94. Norderhaug KM, Christie H, Andersen GS, Bekkby T. Does the diversity of kelp forest macrofauna increase with wave exposure? *J Sea Res.* 2012; 69:36–42. <https://doi.org/10.1016/j.seares.2012.01.004>
95. Christie H, Fredriksen S, Rinde E. Regrowth of kelp and colonization of epiphyte and fauna community after kelp trawling at the coast of Norway. *Hydrobiologia.* 1998; 375–76:49–58. <https://doi.org/10.1023/A:1017021325189> PubMed PMID: ISI:000076948100005.
96. Norderhaug KM, Christie H, Fredriksen S. Is habitat size an important factor for faunal abundances on kelp (*Laminaria hyperborea*)? *J Sea Res.* 2007; 58(2):120–4. <https://doi.org/10.1016/j.seares.2007.03.001> PubMed PMID: ISI:000249225500002.

97. Schultze K, Janke K, Krüß A, Weidemann W. The macrofauna and macroflora associated with *Laminaria digitata* and *L. hyperborea* at the island of Helgoland (German Bight, North Sea). *Helgolander Meeresun.* 1990; 44(1):39–51.
98. Azzarello JJ, Smale DA, Langlois TJ, Håkansson E. Linking habitat characteristics to abundance patterns of canopy-forming macroalgae and sea urchins in southwest Australia. *Mar Biol Res.* 2014; 10(7):682–93.
99. Toohy BD, Kendrick GA. Canopy-understory relationships are mediated by reef topography in *Ecklonia radiata* kelp beds. *Eur J Phycol.* 2008; 43(2):133–42.
100. Toohy BD, Kendrick GA, Harvey ES. Disturbance and reef topography maintain high local diversity in *Ecklonia radiata* kelp forests. *Oikos.* 2007; 116:1618–30.
101. Smith SDA. The effects of domestic sewage effluent on marine communities at Coffs Harbour, New South Wales Australia. *Mar Pollut Bull.* 1996; 33(7–12):309–16.
102. Vasquez JA, Santelices B. Ecological effects of harvesting *Lessonia* (Laminariales, Phaeophyta) in central Chile. *Hydrobiologia.* 1990; 204/205:41–7.
103. Tegner MJ, Dayton PK, Edwards PB, Riser KL. Sea urchin cavitation of giant kelp (*Macrocystis pyrifera* C. Agardh) holdfasts and its effects on kelp mortality across a large California forest. *J Exp Mar Biol Ecol.* 1995; 191(1):83–99.
104. Hagan NT. Destructive grazing of kelp beds by sea urchins in Vestfjorden, northern Norway. *Sarsia.* 1983; 68(3):177–90.
105. Frascchetti S, Terlizzi A, Benedetti-Cecchi L. Patterns of distribution of marine assemblages from rocky shores: evidence of relevant scales of variation. *Mar Ecol Prog Ser.* 2005; 296:13–29.
106. Smale DA, Kendrick GA, Wernberg T. Assemblage turnover and taxonomic sufficiency of subtidal macroalgae at multiple spatial scales. *J Exp Mar Biol Ecol.* 2010; 384(1–2):76–86. <https://doi.org/10.1016/j.jembe.2009.11.013> PubMed PMID: ISI:000275965300009.
107. Underwood AJ, Fairweather PG. Supply-side ecology and benthic marine assemblages. *Trends in ecology and evolution.* 1989; 4(1):16–20. [https://doi.org/10.1016/0169-5347\(89\)90008-6](https://doi.org/10.1016/0169-5347(89)90008-6) PMID: 21227303
108. Edgar GJ. Population regulation, population dynamics and competition amongst mobile epifauna associated with seagrass. *J Exp Mar Biol Ecol.* 1990; 144:205–34.
109. Edgar GJ, Robertson AI. The influence of seagrass structure on the distribution and abundance of mobile epifauna: pattern and process in a Western Australian *Amphibolis* bed. *J Exp Mar Biol Ecol.* 1992; 160:13–31.
110. Goodsell PJ, Connell SD. Complexity in the relationship between matrix composition and inter-patch distance in fragmented habitats. *Marine Biology.* 2008; 154(1):117–25. <https://doi.org/10.1007/s00227-008-0906-2>
111. GP J., FWM J., GB M., CS D. Variations in the configuration of algae in subtidal forests: Implications for invertebrate assemblages. *Austral Ecology.* 2004; 29(3):350–7. <https://doi.org/10.1111/j.1442-9993.2004.01372.x>
112. Goodsell PJ, Connell SD. Can habitat loss be treated independently of habitat configuration? Implications for rare and common taxa in fragmented landscapes. *Marine Ecology Progress Series.* 2002; 239:37–44.
113. Belkin IM. Rapid warming of large marine ecosystems. *Prog Oceanogr.* 2009; 81(1–4):207–13. <https://doi.org/10.1016/j.pocean.2009.04.011> PubMed PMID: ISI:000269301200014.
114. Philippart CJM, Anadon R, Danovaro R, Dippner JW, Drinkwater KF, Hawkins SJ, et al. Impacts of climate change on European marine ecosystems: Observations, expectations and indicators. *Journal of Experimental Marine Biology and Ecology.* 2011; 400:52–69.
115. Müller R, Laepple T, Bartsch I, Wiencke C. Impact of ocean warming on the distribution of seaweeds in polar and cold-temperate waters. *Bot Mar.* 2009; 52(6):617–38. <https://doi.org/10.1515/BOT.2009.080>
116. Joint I, Smale DA. Marine heatwaves and optimal temperatures for microbial assemblage activity. *FEMS Microbiology Ecology.* 2017; 93:1–9.
117. Smith SDA. Evaluating stress in rocky shore and shallow reef habitats using the macrofauna of kelp holdfasts. *J Aquat Ecosyst Stress Recovery.* 2000; 7:259–72.